




جزيرة  
**رمحان**  
RAMHAN ISLAND

# The Island

 Natural, raw, and untouched, Ramhan Island carries all the charm of nature from bays, beaches and mangrove trees, waiting by the seashore and eager to be discovered.

جزيرة رمحان هي جزيرة ساحرة في أبوظبي، تتمتع بجمال الطبيعة غير المسبوق حيث مياه بحرهما الأزرق وأشجار المانجروف النادرة.



Where each home comes  
with surreal water views.



# The Islands



*Shores*  
ISLAND VILLAS

## VILLAS

Sky      Bliss      Spark      Charm  
Glam      Vintage      Grace



# Step into your serene home





# SKY

DISCLAIMER

Water channel distances are for illustrative reasons, and are subject to change without notice.

TOTAL  
UNIT AREA: **696** SQM  
7,492 SQFT

**6 En-suite Bedrooms**



# SKY

DISCLAIMER

Ancillary buildings are not shown on facade visuals.

TOTAL  
UNIT AREA: **696** SQM  
7,492 SQFT

6 En-suite Bedrooms

# SKY

6 En-suite Bedrooms



Ground Floor plan

| Components     | CountNo. | Components    | CountNo. |
|----------------|----------|---------------|----------|
| Master Bedroom | 1        | Formal Living | 1        |
| Bedrooms       | 5        | Formal Dining | 1        |
| Study Room     | 1        | Maid's room   | 1        |
| Living Area    | 1        | Driver's room | 1        |
|                |          | Carport       | 3        |

**DISCLAIMER**

1. All room dimensions are measured to structural elements and exclude wall finishes and construction tolerances. 2. All dimensions have been provided by our consultant architects. 3. All materials, dimensions and drawings are approximate, information subject to change without notice. 4. Actual areas may vary from the stated area. Drawings not to scale. The developer reserves the right to make revisions. 5. Actual unit areas, front windows, porches, terraces, loggia and exterior trim detail may vary by elevation styles and floor level. 6. The unit orientation will be shown in the parcel layout and not as shown in the floor plans. 7. The location of ancillary buildings will vary from one plot to the other. 8. Study room can be converted to a guest bedroom if needed. 9. Pool design is indicative and subject to change at the developer's discretion without prior notice. 10. Pool locations will vary from one plot to the other. 11. The purchase price covers only the inclusion of pools and not the landscape.

TOTAL GROSS AREA: **592** SQM / 6,372 SQFT

TOTAL UNIT AREA: **696** SQM / 7,492 SQFT



First Floor plan

| Components         | SQM   | SQFT   |
|--------------------|-------|--------|
| Ground-floor area  | 249   | 2,676  |
| First-floor area   | 243   | 2,611  |
| Terraces & Porches | 144   | 1,554  |
| Driver             | 15    | 166    |
| Carport            | 45    | 487    |
| Min. Plot area     | 1,274 | 13,713 |
| Max. Plot area     | 1,433 | 15,424 |





# SKY M

DISCLAIMER

Water channel distances are for illustrative reasons, and are subject to change without notice.

TOTAL  
UNIT AREA: **696** SQM  
7,492 SQFT

**6 En-suite Bedrooms**



# SKY M

DISCLAIMER  
Ancillary buildings are not shown on facade visuals.

TOTAL  
UNIT AREA: **696** SQM  
7,492 SQFT

*6 En-suite Bedrooms*

# SKY M

6 En-suite Bedrooms



Ground Floor plan

| Components     | CountNo. | Components    | CountNo. |
|----------------|----------|---------------|----------|
| Master Bedroom | 1        | Formal Living | 1        |
| Bedrooms       | 5        | Formal Dining | 1        |
| Study Room     | 1        | Maid's room   | 1        |
| Living Area    | 1        | Driver's room | 1        |
|                |          | Carport       | 3        |

**DISCLAIMER**

1. All room dimensions are measured to structural elements and exclude wall finishes and construction tolerances. 2. All dimensions have been provided by our consultant architects. 3. All materials, dimensions and drawings are approximate, information subject to change without notice. 4. Actual areas may vary from the stated area. Drawings not to scale. The developer reserves the right to make revisions. 5. Actual unit areas, front windows, porches, terraces, loggia and exterior trim detail may vary by elevation styles and floor level. 6. The unit orientation will be shown in the parcel layout and not as shown in the floor plans. 7. The location of ancillary buildings will vary from one plot to the other. 8. Study room can be converted to a guest bedroom if needed. 9. Pool design is indicative and subject to change at the developer's discretion without prior notice. 10. Pool locations will vary from one plot to the other. 11. The purchase price covers only the inclusion of pools and not the landscape.

TOTAL GROSS AREA: **592** SQM / 6,372 SQFT

TOTAL UNIT AREA: **696** SQM / 7,492 SQFT



First Floor plan

| Components         | SQM   | SQFT   |
|--------------------|-------|--------|
| Ground-floor area  | 249   | 2,676  |
| First-floor area   | 243   | 2,611  |
| Terraces & Porches | 144   | 1,554  |
| Driver             | 15    | 166    |
| Carport            | 45    | 487    |
| Min. Plot area     | 1,274 | 13,713 |
| Max. Plot area     | 1,433 | 15,424 |



# BLISS

DISCLAIMER

Water channel distances are for illustrative reasons, and are subject to change without notice.

TOTAL  
UNIT AREA: **512** SQM  
5,506 SQFT

*6 Bedrooms*

*4 En-suite + 2 Bedrooms*



# BLISS

DISCLAIMER

Ancillary buildings are not shown on facade visuals.

TOTAL  
UNIT AREA: **512** SQM  
5,506 SQFT

*6 Bedrooms*

*4 En-suite + 2 Bedrooms*

# BLISS

4 En-suite + 2 Bedrooms



Ground Floor plan

| Components     | CountNo. | Components    | CountNo. |
|----------------|----------|---------------|----------|
| Master Bedroom | 1        | Dining        | 1        |
| Bedrooms       | 5        | Maid's room   | 1        |
| Study Room     | 1        | Driver's room | 1        |
| Living Area    | 1        | Carport       | 3        |

**DISCLAIMER**

1. All room dimensions are measured to structural elements and exclude wall finishes and construction tolerances. 2. All dimensions have been provided by our consultant architects. 3. All materials, dimensions and drawings are approximate, information subject to change without notice. 4. Actual areas may vary from the stated area. Drawings not to scale. The developer reserves the right to make revisions. 5. Actual unit areas, front windows, porches, terraces, loggia and exterior trim detail may vary by elevation styles and floor level. 6. The unit orientation will be shown in the parcel layout and not as shown in the floor plans. 7. The location of ancillary buildings will vary from one plot to the other. 8. Study room can be converted to a guest bedroom if needed. 9. Pool design is indicative and subject to change at the developer's discretion without prior notice. 10. Pool locations will vary from one plot to the other. 11. The purchase price covers only the inclusion of pools and not the landscape.

TOTAL GROSS AREA: **478** SQM / 5,143 SQFT

TOTAL UNIT AREA: **512** SQM / 5,506 SQFT



First Floor plan

| Components         | SQM   | SQFT   |
|--------------------|-------|--------|
| Ground-floor area  | 216   | 2,320  |
| First-floor area   | 179   | 1,926  |
| Terraces & Porches | 51    | 550    |
| Driver's Room      | 14    | 153    |
| Carport            | 52    | 557    |
| Min. Plot area     | 780   | 8,396  |
| Max. Plot area     | 1,173 | 12,626 |



# BLISS M

DISCLAIMER

Water channel distances are for illustrative reasons, and are subject to change without notice.

TOTAL  
UNIT AREA: **512** SQM  
5,506 SQFT

*6 Bedrooms*

*4 En-suite + 2 Bedrooms*



# BLISS M

DISCLAIMER  
Ancillary buildings are not shown on facade visuals.

TOTAL  
UNIT AREA: **512** SQM  
5,506 SQFT

*6 Bedrooms*

*4 En-suite + 2 Bedrooms*



# BLISS M

4 En-suite + 2 Bedrooms



Ground Floor plan

| Components     | CountNo. | Components    | CountNo. |
|----------------|----------|---------------|----------|
| Master Bedroom | 1        | Dining        | 1        |
| Bedrooms       | 5        | Maid's room   | 1        |
| Study Room     | 1        | Driver's room | 1        |
| Living Area    | 1        | Carport       | 3        |

**DISCLAIMER**

1. All room dimensions are measured to structural elements and exclude wall finishes and construction tolerances. 2. All dimensions have been provided by our consultant architects. 3. All materials, dimensions and drawings are approximate, information subject to change without notice. 4. Actual areas may vary from the stated area. Drawings not to scale. The developer reserves the right to make revisions. 5. Actual unit areas, front windows, porches, terraces, loggia and exterior trim detail may vary by elevation styles and floor level. 6. The unit orientation will be shown in the parcel layout and not as shown in the floor plans. 7. The location of ancillary buildings will vary from one plot to the other. 8. Study room can be converted to a guest bedroom if needed. 9. Pool design is indicative and subject to change at the developer's discretion without prior notice. 10. Pool locations will vary from one plot to the other. 11. The purchase price covers only the inclusion of pools and not the landscape.

TOTAL GROSS AREA: **478** SQM / 5,143 SQFT

TOTAL UNIT AREA: **512** SQM / 5,506 SQFT



First Floor plan

| Components         | SQM   | SQFT   |
|--------------------|-------|--------|
| Ground-floor area  | 216   | 2,320  |
| First-floor area   | 179   | 1,926  |
| Terraces & Porches | 51    | 550    |
| Driver's Room      | 14    | 153    |
| Carport            | 52    | 557    |
| Min. Plot area     | 780   | 8,396  |
| Max. Plot area     | 1,173 | 12,626 |



# BLISS I

DISCLAIMER

Water channel distances are for illustrative reasons, and are subject to change without notice.

TOTAL  
UNIT AREA: **651** SQM  
7,004 SQFT

*6 Bedrooms*

*4 En-suite + 2 Bedrooms*



# BLISS I

DISCLAIMER

Ancillary buildings are not shown on facade visuals.

TOTAL  
UNIT AREA: **651** SQM  
7,004 SQFT

*6 Bedrooms*

*4 En-suite + 2 Bedrooms*

# BLISS I

4 En-suite + 2 Bedrooms



Ground Floor plan

| Components     | CountNo. | Components    | CountNo. |
|----------------|----------|---------------|----------|
| Master Bedroom | 1        | Dining        | 1        |
| Bedrooms       | 5        | Maid's room   | 1        |
| Study Room     | 1        | Driver's room | 1        |
| Living Area    | 1        | Carport       | 3        |

**DISCLAIMER**

1. All room dimensions are measured to structural elements and exclude wall finishes and construction tolerances. 2. All dimensions have been provided by our consultant architects. 3. All materials, dimensions and drawings are approximate, information subject to change without notice. 4. Actual areas may vary from the stated area. Drawings not to scale. The developer reserves the right to make revisions. 5. Actual unit areas, front windows, porches, terraces, loggia and exterior trim detail may vary by elevation styles and floor level. 6. The unit orientation will be shown in the parcel layout and not as shown in the floor plans. 7. The location of ancillary buildings will vary from one plot to the other. 8. Study room can be converted to a guest bedroom if needed. 9. Pool design is indicative and subject to change at the developer's discretion without prior notice. 10. Pool locations will vary from one plot to the other. 11. The purchase price covers only the inclusion of pools and not the landscape.

TOTAL GROSS AREA: **474** SQM / 5,096 SQFT

TOTAL UNIT AREA: **651** SQM / 7,004 SQFT



First Floor plan

| Components         | SQM   | SQFT   |
|--------------------|-------|--------|
| Ground-floor area  | 224   | 2,406  |
| First-floor area   | 190   | 2,044  |
| Terraces & Porches | 141   | 1,516  |
| Driver's Room      | 17    | 184    |
| Carport            | 49    | 853    |
| Min. Plot area     | 835   | 8,988  |
| Max. Plot area     | 1,254 | 13,498 |



# BLISS I-M

DISCLAIMER

Water channel distances are for illustrative reasons, and are subject to change without notice.

TOTAL  
UNIT AREA: **651** SQM  
7,004 SQFT

*6 Bedrooms*

*4 En-suite + 2 Bedrooms*



# BLISS I-M

DISCLAIMER  
Ancillary buildings are not shown on facade visuals.

TOTAL  
UNIT AREA: **651** SQM  
7,004 SQFT

**6 Bedrooms**

**4 En-suite + 2 Bedrooms**

RAMHAN ISLAND  
**BLISS I-M**

4 En-suite + 2 Bedrooms



Ground Floor plan

| Components     | CountNo. | Components    | CountNo. |
|----------------|----------|---------------|----------|
| Master Bedroom | 1        | Dining        | 1        |
| Bedrooms       | 5        | Maid's room   | 1        |
| Study Room     | 1        | Driver's room | 1        |
| Living Area    | 1        | Carport       | 3        |

DISCLAIMER

1. All room dimensions are measured to structural elements and exclude wall finishes and construction tolerances. 2. All dimensions have been provided by our consultant architects. 3. All materials, dimensions and drawings are approximate, information subject to change without notice. 4. Actual areas may vary from the stated area. Drawings not to scale. The developer reserves the right to make revisions. 5. Actual unit areas, front windows, porches, terraces, loggia and exterior trim detail may vary by elevation styles and floor level. 6. The unit orientation will be shown in the parcel layout and not as shown in the floor plans. 7. The location of ancillary buildings will vary from one plot to the other. 8. Study room can be converted to a guest bedroom if needed. 9. Pool design is indicative and subject to change at the developer's discretion without prior notice. 10. Pool locations will vary from one plot to the other. 11. The purchase price covers only the inclusion of pools and not the landscape.

TOTAL GROSS AREA: **474** SQM / 5,096 SQFT

TOTAL UNIT AREA: **651** SQM / 7,004 SQFT



First Floor plan

| Components         | SQM   | SQFT   |
|--------------------|-------|--------|
| Ground-floor area  | 224   | 2,406  |
| First-floor area   | 190   | 2,044  |
| Terraces & Porches | 141   | 1,516  |
| Driver's Room      | 17    | 184    |
| Carport            | 49    | 853    |
| Min. Plot area     | 835   | 8,988  |
| Max. Plot area     | 1,254 | 13,498 |



# GLAM

DISCLAIMER

Water channel distances are for illustrative reasons, and are subject to change without notice.

TOTAL  
UNIT AREA: **539** SQM  
5,800 SQFT

*4 Bedrooms*

*2 En-suite + 2 Bedrooms*





# GLAM

DISCLAIMER

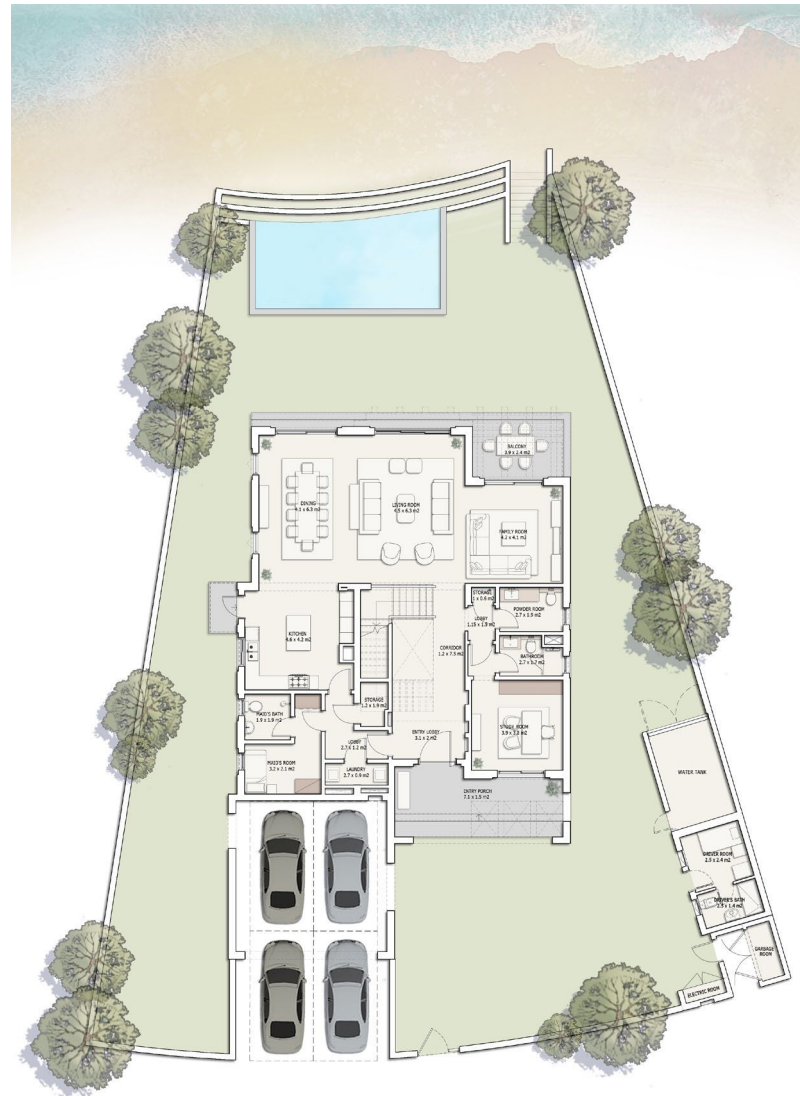
Ancillary buildings are not shown on facade visuals.

TOTAL  
UNIT AREA: **539** SQM  
5,800 SQFT

*4 Bedrooms*

*2 En-suite + 2 Bedrooms*

RAMHAN ISLAND  
**GLAM**  
 2 En-suite + 2 Bedrooms



Ground Floor plan

| Components     | CountNo. | Components    | CountNo. |
|----------------|----------|---------------|----------|
| Master Bedroom | 1        | Dining        | 1        |
| Bedrooms       | 3        | Maid's room   | 1        |
| Study Room     | 1        | Driver's room | 1        |
| Living Area    | 1        | Carport       | 2        |

DISCLAIMER

1. All room dimensions are measured to structural elements and exclude wall finishes and construction tolerances. 2. All dimensions have been provided by our consultant architects. 3. All materials, dimensions and drawings are approximate, information subject to change without notice. 4. Actual areas may vary from the stated area. Drawings not to scale. The developer reserves the right to make revisions. 5. Actual unit areas, front windows, porches, terraces, loggia and exterior trim detail may vary by elevation styles and floor level. 6. The unit orientation will be shown in the parcel layout and not as shown in the floor plans. 7. The location of ancillary buildings will vary from one plot to the other. 8. Study room can be converted to a guest bedroom if needed. 9. Pool design is indicative and subject to change at the developer's discretion without prior notice. 10. Pool locations will vary from one plot to the other. 11. The purchase price covers only the inclusion of pools and not the landscape.

TOTAL GROSS AREA: **500** SQM / 5,376 SQFT

TOTAL UNIT AREA: **539** SQM / 5,800 SQFT



First Floor plan

| Components         | SQM   | SQFT   |
|--------------------|-------|--------|
| Ground-floor area  | 199   | 2,138  |
| First-floor area   | 191   | 2,057  |
| Terraces & Porches | 68    | 735    |
| Driver             | 15    | 157    |
| Carport            | 66    | 713    |
| Min. Plot area     | 804   | 8,654  |
| Max. Plot area     | 1,111 | 11,959 |



# GLAM-M

DISCLAIMER

Water channel distances are for illustrative reasons, and are subject to change without notice.

TOTAL  
UNIT AREA: **539** SQM  
5,800 SQFT

*4 Bedrooms*

*2 En-suite + 2 Bedrooms*



# GLAM-M

DISCLAIMER

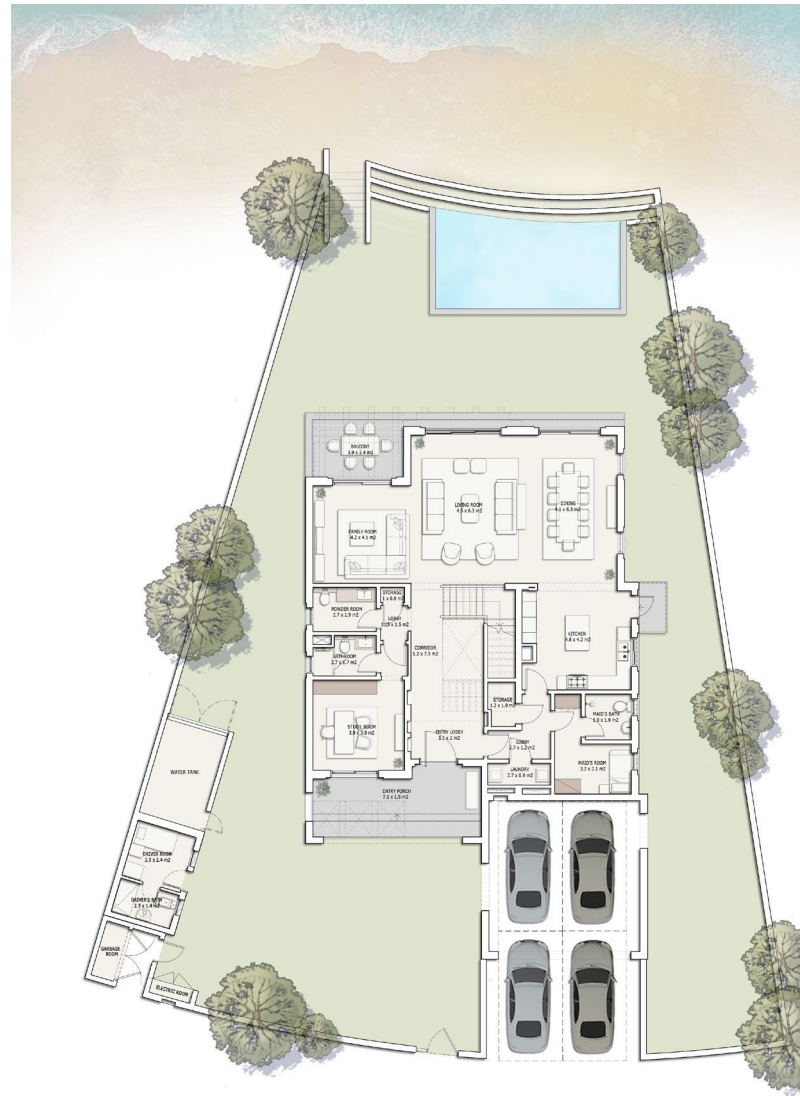
Ancillary buildings are not shown on facade visuals.

TOTAL  
UNIT AREA: **539** SQM  
5,800 SQFT

*4 Bedrooms*

*2 En-suite + 2 Bedrooms*

RAMHAN ISLAND  
**GLAM-M**  
 2 En-suite + 2 Bedrooms



Ground Floor plan

| Components     | CountNo. | Components    | CountNo. |
|----------------|----------|---------------|----------|
| Master Bedroom | 1        | Dining        | 1        |
| Bedrooms       | 3        | Maid's room   | 1        |
| Study Room     | 1        | Driver's room | 1        |
| Living Area    | 1        | Carport       | 2        |

DISCLAIMER

1. All room dimensions are measured to structural elements and exclude wall finishes and construction tolerances. 2. All dimensions have been provided by our consultant architects. 3. All materials, dimensions and drawings are approximate, information subject to change without notice. 4. Actual areas may vary from the stated area. Drawings not to scale. The developer reserves the right to make revisions. 5. Actual unit areas, front windows, porches, terraces, loggia and exterior trim detail may vary by elevation styles and floor level. 6. The unit orientation will be shown in the parcel layout and not as shown in the floor plans. 7. The location of ancillary buildings will vary from one plot to the other. 8. Study room can be converted to a guest bedroom if needed. 9. Pool design is indicative and subject to change at the developer's discretion without prior notice. 10. Pool locations will vary from one plot to the other. 11. The purchase price covers only the inclusion of pools and not the landscape.

TOTAL GROSS AREA: **500** SQM / 5,376 SQFT

TOTAL UNIT AREA: **539** SQM / 5,800 SQFT



First Floor plan

| Components         | SQM   | SQFT   |
|--------------------|-------|--------|
| Ground-floor area  | 199   | 2,138  |
| First-floor area   | 191   | 2,057  |
| Terraces & Porches | 68    | 735    |
| Driver             | 15    | 157    |
| Carport            | 66    | 713    |
| Min. Plot area     | 804   | 8,654  |
| Max. Plot area     | 1,111 | 11,959 |



# VINTAGE I

DISCLAIMER

Water channel distances are for illustrative reasons, and are subject to change without notice.

TOTAL  
UNIT AREA: **532** SQM  
5,730 SQFT

*5 Bedrooms*

*3 En-suite + 2 Bedrooms*



# VINTAGE I

DISCLAIMER

Ancillary buildings are not shown on facade visuals.

TOTAL  
UNIT AREA: **532** SQM  
5,730 SQFT

**5 Bedrooms**

**3 En-suite + 2 Bedrooms**

# VINTAGE I

3 En-suite + 2 Bedrooms



Ground Floor plan

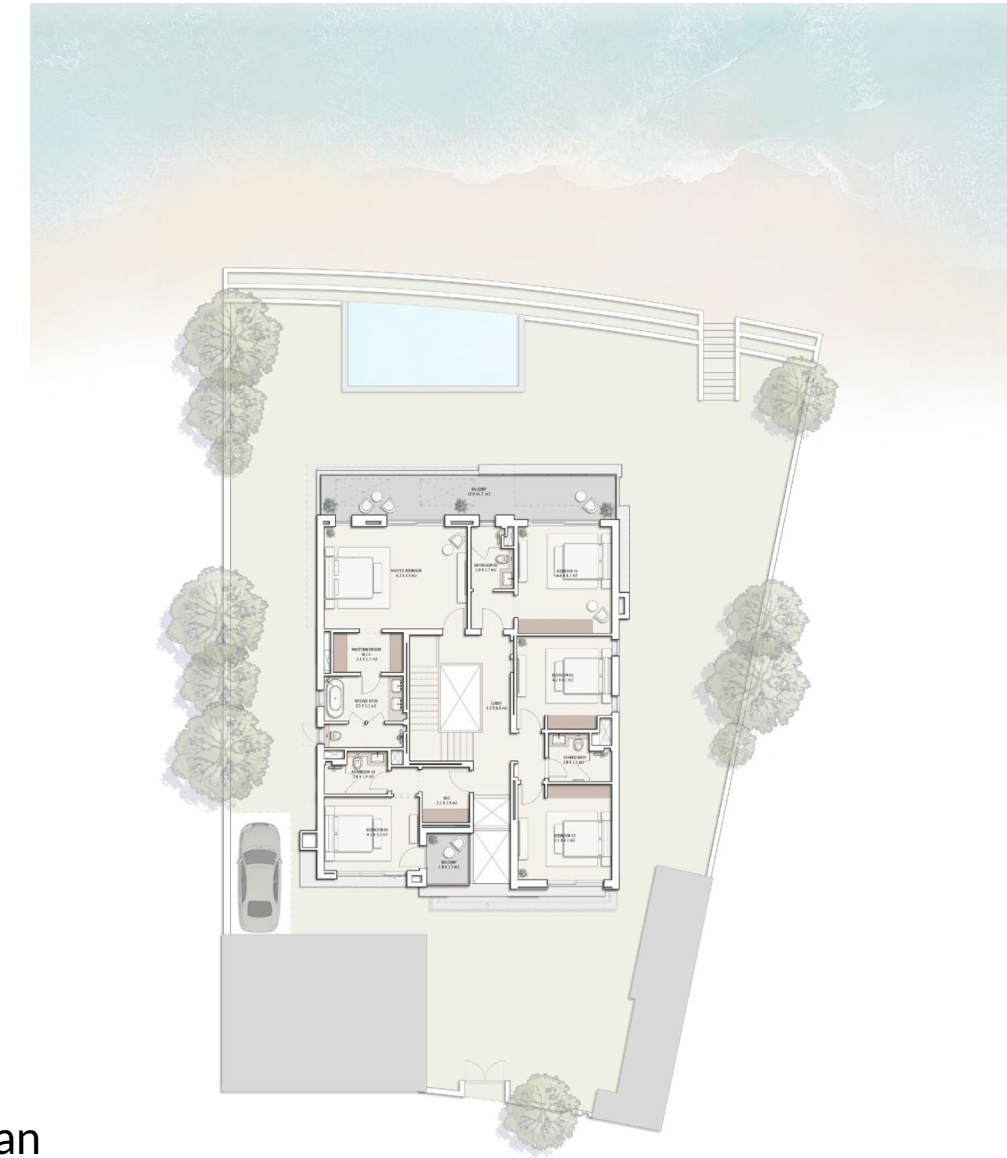
| Components     | CountNo. | Components    | CountNo. |
|----------------|----------|---------------|----------|
| Master Bedroom | 1        | Dining        | 1        |
| Bedrooms       | 4        | Maid's room   | 1        |
| Study Room     | 1        | Driver's room | 1        |
| Living Area    | 1        | Carport       | 3        |

**DISCLAIMER**

1. All room dimensions are measured to structural elements and exclude wall finishes and construction tolerances. 2. All dimensions have been provided by our consultant architects. 3. All materials, dimensions and drawings are approximate, information subject to change without notice. 4. Actual areas may vary from the stated area. Drawings not to scale. The developer reserves the right to make revisions. 5. Actual unit areas, front windows, porches, terraces, loggia and exterior trim detail may vary by elevation styles and floor level. 6. The unit orientation will be shown in the parcel layout and not as shown in the floor plans. 7. The location of ancillary buildings will vary from one plot to the other. 8. Study room can be converted to a guest bedroom if needed. 9. Pool design is indicative and subject to change at the developer's discretion without prior notice. 10. Pool locations will vary from one plot to the other. 11. The purchase price covers only the inclusion of pools and not the landscape.

TOTAL GROSS AREA: **416** SQM / 4,482 SQFT

TOTAL UNIT AREA: **532** SQM / 5,730 SQFT



First Floor plan

| Components         | SQM   | SQFT   |
|--------------------|-------|--------|
| Ground-floor area  | 196   | 2,110  |
| First-floor area   | 195   | 2,098  |
| Terraces & Porches | 72    | 771    |
| Driver             | 0     | 0      |
| Carport            | 70    | 752    |
| Min. Plot area     | 800   | 8,611  |
| Max. Plot area     | 1,044 | 11,237 |





# VINTAGE I-M

DISCLAIMER

Water channel distances are for illustrative reasons, and are subject to change without notice.

TOTAL  
UNIT AREA: **532** SQM  
5,730 SQFT

*5 Bedrooms*

*3 En-suite + 2 Bedrooms*



# VINTAGE I-M

DISCLAIMER

Ancillary buildings are not shown on facade visuals.

76

TOTAL  
UNIT AREA: **532** SQM  
5,730 SQFT

**5 Bedrooms**

**3 En-suite + 2 Bedrooms**

77

RAMHAN ISLAND  
**VINTAGE I-M**  
 3 En-suite + 2 Bedrooms



Ground Floor plan

| Components     | CountNo. | Components    | CountNo. |
|----------------|----------|---------------|----------|
| Master Bedroom | 1        | Dining        | 1        |
| Bedrooms       | 4        | Maid's room   | 1        |
| Study Room     | 1        | Driver's room | 1        |
| Living Area    | 1        | Carport       | 3        |

DISCLAIMER

1. All room dimensions are measured to structural elements and exclude wall finishes and construction tolerances. 2. All dimensions have been provided by our consultant architects. 3. All materials, dimensions and drawings are approximate, information subject to change without notice. 4. Actual areas may vary from the stated area. Drawings not to scale. The developer reserves the right to make revisions. 5. Actual unit areas, front windows, porches, terraces, loggia and exterior trim detail may vary by elevation styles and floor level. 6. The unit orientation will be shown in the parcel layout and not as shown in the floor plans. 7. The location of ancillary buildings will vary from one plot to the other. 8. Study room can be converted to a guest bedroom if needed. 9. Pool design is indicative and subject to change at the developer's discretion without prior notice. 10. Pool locations will vary from one plot to the other. 11. The purchase price covers only the inclusion of pools and not the landscape.

TOTAL GROSS AREA: **416** SQM / 4,482 SQFT

TOTAL UNIT AREA: **532** SQM / 5,730 SQFT



First Floor plan

| Components         | SQM   | SQFT   |
|--------------------|-------|--------|
| Ground-floor area  | 196   | 2,110  |
| First-floor area   | 195   | 2,098  |
| Terraces & Porches | 72    | 771    |
| Driver             | 0     | 0      |
| Carport            | 70    | 752    |
| Min. Plot area     | 800   | 8,611  |
| Max. Plot area     | 1,044 | 11,237 |



# VINTAGE II

DISCLAIMER

Water channel distances are for illustrative reasons, and are subject to change without notice.

TOTAL  
UNIT AREA: **516** SQM  
5,551 SQFT

*5 Bedrooms*

*3 En-suite + 2 Bedrooms*



# VINTAGE II

DISCLAIMER

Ancillary buildings are not shown on facade visuals.

TOTAL  
UNIT AREA: **516** SQM  
5,551 SQFT

**5 Bedrooms**

**3 En-suite + 2 Bedrooms**

# VINTAGE II

3 En-suite + 2 Bedrooms



Ground Floor plan

| Components     | CountNo. | Components    | CountNo. |
|----------------|----------|---------------|----------|
| Master Bedroom | 1        | Dining        | 1        |
| Bedrooms       | 4        | Maid's room   | 1        |
| Study Room     | 1        | Driver's room | 1        |
| Living Area    | 1        | Carport       | 3        |

**DISCLAIMER**

1. All room dimensions are measured to structural elements and exclude wall finishes and construction tolerances. 2. All dimensions have been provided by our consultant architects. 3. All materials, dimensions and drawings are approximate, information subject to change without notice. 4. Actual areas may vary from the stated area. Drawings not to scale. The developer reserves the right to make revisions. 5. Actual unit areas, front windows, porches, terraces, loggia and exterior trim detail may vary by elevation styles and floor level. 6. The unit orientation will be shown in the parcel layout and not as shown in the floor plans. 7. The location of ancillary buildings will vary from one plot to the other. 8. Study room can be converted to a guest bedroom if needed. 9. Pool design is indicative and subject to change at the developer's discretion without prior notice. 10. Pool locations will vary from one plot to the other. 11. The purchase price covers only the inclusion of pools and not the landscape.

TOTAL GROSS AREA: **410** SQM / 4,415 SQFT

TOTAL UNIT AREA: **516** SQM / 5,551 SQFT



First Floor plan

| Components         | SQM   | SQFT   |
|--------------------|-------|--------|
| Ground-floor area  | 192   | 2,066  |
| First-floor area   | 193   | 2,077  |
| Terraces & Porches | 61    | 657    |
| Driver             | 0     | 0      |
| Carport            | 68    | 732    |
| Min. Plot area     | 728   | 7,836  |
| Max. Plot area     | 1,176 | 12,658 |



# VINTAGE II-M

DISCLAIMER

Water channel distances are for illustrative reasons, and are subject to change without notice.

TOTAL  
UNIT AREA: **516** SQM  
5,551 SQFT

*5 Bedrooms*

*3 En-suite + 2 Bedrooms*



# VINTAGE II-M

DISCLAIMER

Ancillary buildings are not shown on facade visuals.

88

TOTAL  
UNIT AREA: **516** SQM  
5,551 SQFT

*5 Bedrooms*

*3 En-suite + 2 Bedrooms*

89



RAMHAN ISLAND  
**VINTAGE II-M**  
 3 En-suite + 2 Bedrooms



Ground Floor plan

| Components     | CountNo. | Components    | CountNo. |
|----------------|----------|---------------|----------|
| Master Bedroom | 1        | Dining        | 1        |
| Bedrooms       | 4        | Maid's room   | 1        |
| Study Room     | 1        | Driver's room | 1        |
| Living Area    | 1        | Carport       | 3        |

DISCLAIMER

1. All room dimensions are measured to structural elements and exclude wall finishes and construction tolerances. 2. All dimensions have been provided by our consultant architects. 3. All materials, dimensions and drawings are approximate, information subject to change without notice. 4. Actual areas may vary from the stated area. Drawings not to scale. The developer reserves the right to make revisions. 5. Actual unit areas, front windows, porches, terraces, loggia and exterior trim detail may vary by elevation styles and floor level. 6. The unit orientation will be shown in the parcel layout and not as shown in the floor plans. 7. The location of ancillary buildings will vary from one plot to the other. 8. Study room can be converted to a guest bedroom if needed. 9. Pool design is indicative and subject to change at the developer's discretion without prior notice. 10. Pool locations will vary from one plot to the other. 11. The purchase price covers only the inclusion of pools and not the landscape.

TOTAL GROSS AREA: **410** SQM / 4,415 SQFT

TOTAL UNIT AREA: **516** SQM / 5,551 SQFT



First Floor plan

| Components         | SQM   | SQFT   |
|--------------------|-------|--------|
| Ground-floor area  | 192   | 2,066  |
| First-floor area   | 193   | 2,077  |
| Terraces & Porches | 61    | 657    |
| Driver             | 0     | 0      |
| Carport            | 68    | 732    |
| Min. Plot area     | 728   | 7,836  |
| Max. Plot area     | 1,176 | 12,658 |



# SPARK I

DISCLAIMER

Water channel distances are for illustrative reasons, and are subject to change without notice.

TOTAL  
UNIT AREA: **503** SQM  
5,413 SQFT

**4 Bedrooms**

**2 En-suite + 2 Bedrooms**



# SPARK I

DISCLAIMER

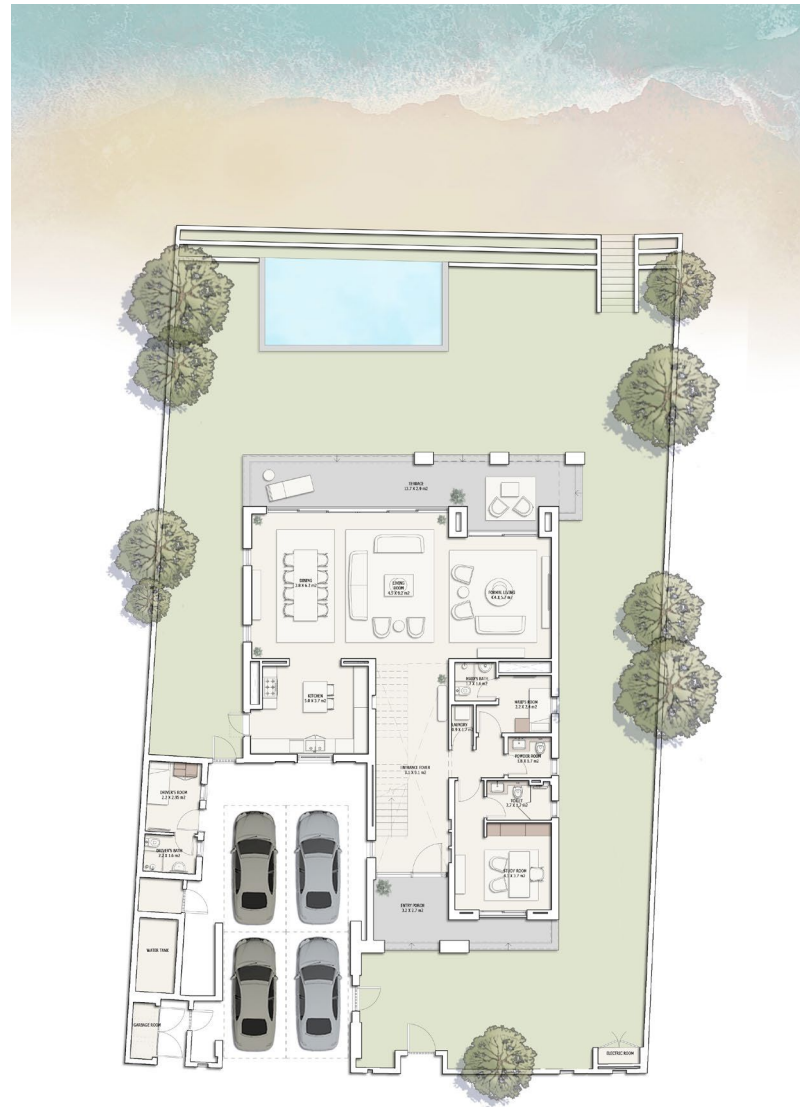
Ancillary buildings are not shown on facade visuals.

TOTAL  
UNIT AREA: **503** SQM  
5,413 SQFT

4 Bedrooms

2 En-suite + 2 Bedrooms

RAMHAN ISLAND  
**SPARK I**  
 2 En-suite + 2 Bedrooms



Ground Floor plan

| Components     | CountNo. | Components    | CountNo. |
|----------------|----------|---------------|----------|
| Master Bedroom | 1        | Dining        | 1        |
| Bedrooms       | 3        | Maid's room   | 1        |
| Study Room     | 1        | Driver's room | 1        |
| Living Area    | 1        | Carport       | 2        |

DISCLAIMER

1. All room dimensions are measured to structural elements and exclude wall finishes and construction tolerances. 2. All dimensions have been provided by our consultant architects. 3. All materials, dimensions and drawings are approximate, information subject to change without notice. 4. Actual areas may vary from the stated area. Drawings not to scale. The developer reserves the right to make revisions. 5. Actual unit areas, front windows, porches, terraces, loggia and exterior trim detail may vary by elevation styles and floor level. 6. The unit orientation will be shown in the parcel layout and not as shown in the floor plans. 7. The location of ancillary buildings will vary from one plot to the other. 8. Study room can be converted to a guest bedroom if needed. 9. Pool design is indicative and subject to change at the developer's discretion without prior notice. 10. Pool locations will vary from one plot to the other. 11. The purchase price covers only the inclusion of pools and not the landscape.

TOTAL GROSS AREA: **394** SQM / 4,244 SQFT

TOTAL UNIT AREA: **503** SQM / 5,413 SQFT



First Floor plan

| Components         | SQM | SQFT   |
|--------------------|-----|--------|
| Ground-floor area  | 189 | 2,035  |
| First-floor area   | 149 | 1,608  |
| Terraces & Porches | 84  | 906    |
| Driver             | 15  | 162    |
| Carport            | 65  | 705    |
| Min. Plot area     | 821 | 8,837  |
| Max. Plot area     | 988 | 10,634 |



# SPARK I-M

DISCLAIMER

Water channel distances are for illustrative reasons, and are subject to change without notice.

TOTAL  
UNIT AREA: **503** SQM  
5,413 SQFT

*4 Bedrooms*

*2 En-suite + 2 Bedrooms*



# SPARK I-M

DISCLAIMER

Ancillary buildings are not shown on facade visuals.

100

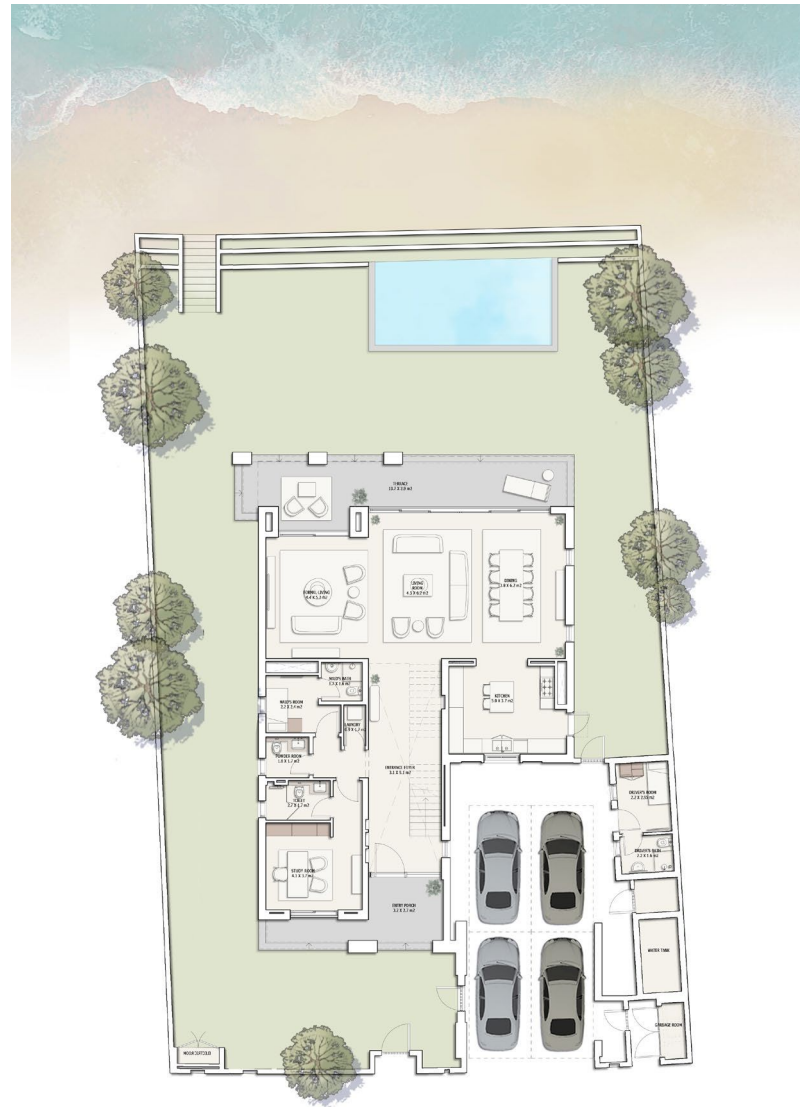
TOTAL  
UNIT AREA: **503** SQM  
5,413 SQFT

*4 Bedrooms*

*2 En-suite + 2 Bedrooms*

101

RAMHAN ISLAND  
**SPARK I-M**  
 2 En-suite + 2 Bedrooms



Ground Floor plan

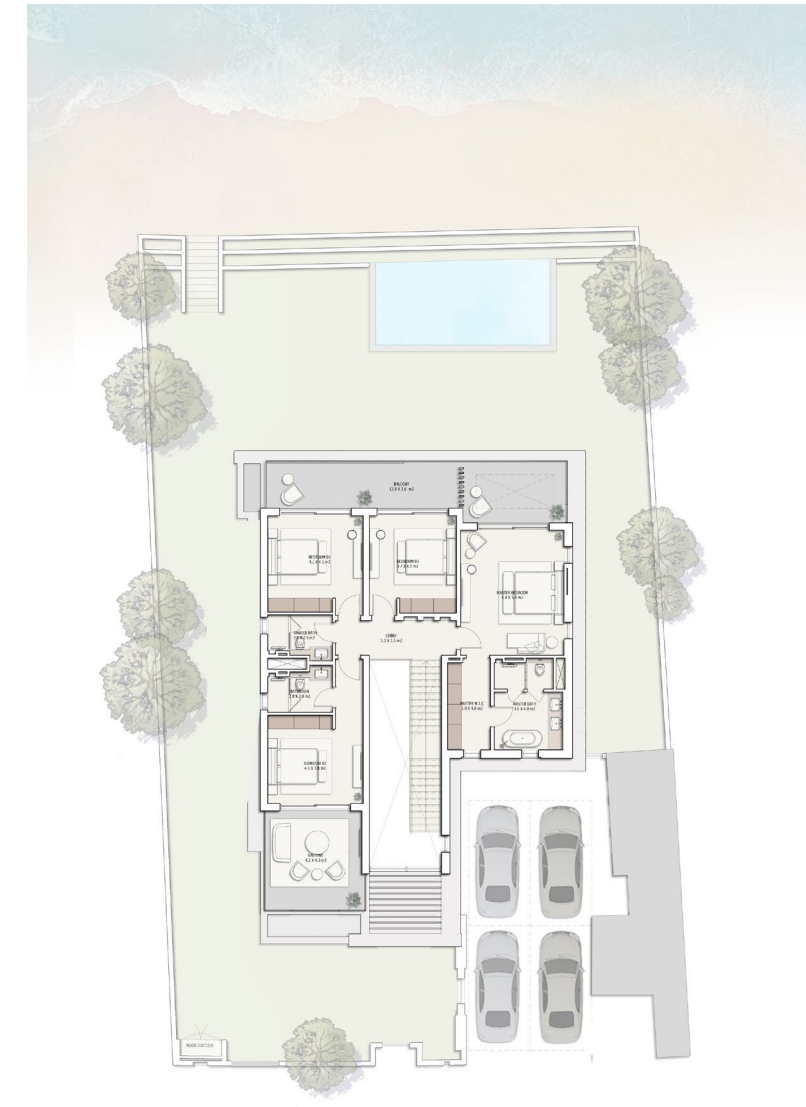
| Components     | CountNo. | Components    | CountNo. |
|----------------|----------|---------------|----------|
| Master Bedroom | 1        | Dining        | 1        |
| Bedrooms       | 3        | Maid's room   | 1        |
| Study Room     | 1        | Driver's room | 1        |
| Living Area    | 1        | Carport       | 2        |

DISCLAIMER

1. All room dimensions are measured to structural elements and exclude wall finishes and construction tolerances. 2. All dimensions have been provided by our consultant architects. 3. All materials, dimensions and drawings are approximate, information subject to change without notice. 4. Actual areas may vary from the stated area. Drawings not to scale. The developer reserves the right to make revisions. 5. Actual unit areas, front windows, porches, terraces, loggia and exterior trim detail may vary by elevation styles and floor level. 6. The unit orientation will be shown in the parcel layout and not as shown in the floor plans. 7. The location of ancillary buildings will vary from one plot to the other. 8. Study room can be converted to a guest bedroom if needed. 9. Pool design is indicative and subject to change at the developer's discretion without prior notice. 10. Pool locations will vary from one plot to the other. 11. The purchase price covers only the inclusion of pools and not the landscape.

TOTAL GROSS AREA: **394** SQM / 4,244 SQFT

TOTAL UNIT AREA: **503** SQM / 5,413 SQFT



First Floor plan

| Components         | SQM | SQFT   |
|--------------------|-----|--------|
| Ground-floor area  | 189 | 2,035  |
| First-floor area   | 149 | 1,608  |
| Terraces & Porches | 84  | 906    |
| Driver             | 15  | 162    |
| Carport            | 65  | 705    |
| Min. Plot area     | 821 | 9,837  |
| Max. Plot area     | 988 | 10,634 |



# SPARK II

DISCLAIMER

Water channel distances are for illustrative reasons, and are subject to change without notice.

TOTAL  
UNIT AREA: **498** SQM  
5,360 SQFT

*4 Bedrooms*

*2 En-suite + 2 Bedrooms*





# SPARK II

DISCLAIMER

Ancillary buildings are not shown on facade visuals.

TOTAL  
UNIT AREA: **498** SQM  
5,360 SQFT

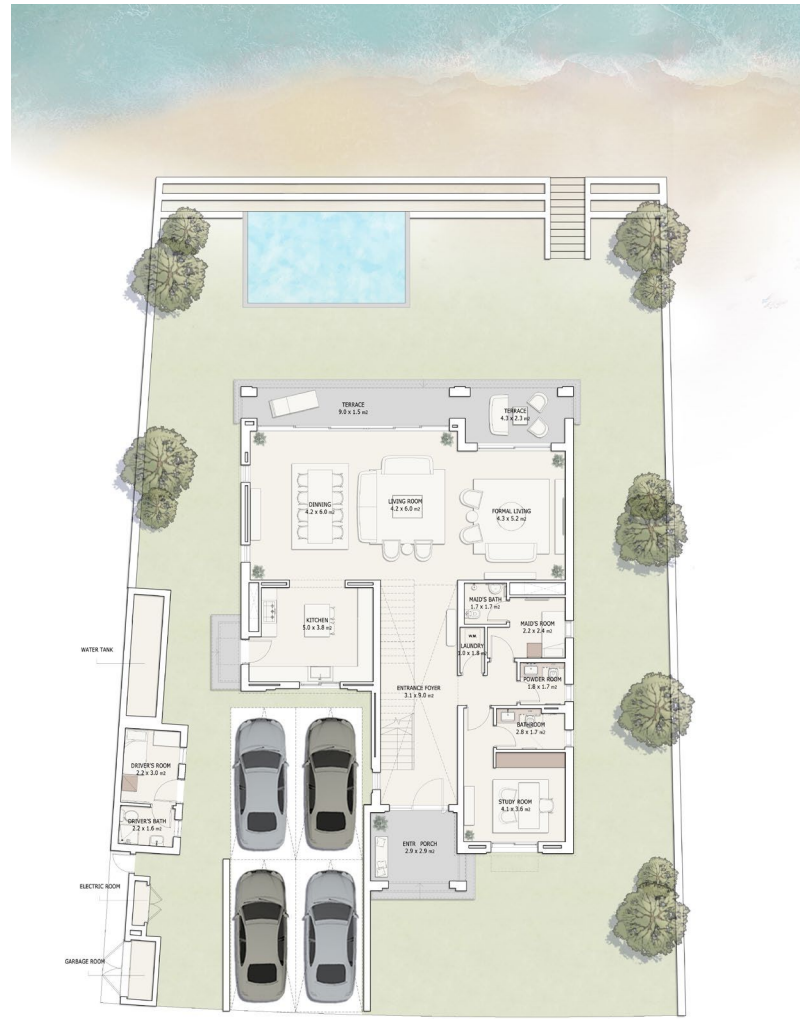
**4 Bedrooms**

**2 En-suite + 2 Bedrooms**

RAMHAN ISLAND  
**SPARK II**  
 2 En-suite + 2 Bedrooms

TOTAL GROSS AREA: **385** SQM / 4,145 SQFT

TOTAL UNIT AREA: **498** SQM / 5,360 SQFT



Ground Floor plan

| Components     | CountNo. | Components    | CountNo. |
|----------------|----------|---------------|----------|
| Master Bedroom | 1        | Dining        | 1        |
| Bedrooms       | 3        | Maid's room   | 1        |
| Study Room     | 1        | Driver's room | 1        |
| Guest Bedroom  | 1        | Carport       | 2        |
| Living Area    | 1        |               |          |

DISCLAIMER

1. All room dimensions are measured to structural elements and exclude wall finishes and construction tolerances. 2. All dimensions have been provided by our consultant architects. 3. All materials, dimensions and drawings are approximate, information subject to change without notice. 4. Actual areas may vary from the stated area. Drawings not to scale. The developer reserves the right to make revisions. 5. Actual unit areas, front windows, porches, terraces, loggia and exterior trim detail may vary by elevation styles and floor level. 6. The unit orientation will be shown in the parcel layout and not as shown in the floor plans. 7. The location of ancillary buildings will vary from one plot to the other. 8. Study room can be converted to a guest bedroom if needed. 9. Pool design is indicative and subject to change at the developer's discretion without prior notice. 10. Pool locations will vary from one plot to the other. 11. The purchase price covers only the inclusion of pools and not the landscape.



First Floor plan

| Components         | SQM | SQFT   |
|--------------------|-----|--------|
| Ground-floor area  | 187 | 2,013  |
| First-floor area   | 149 | 1,608  |
| Terraces & Porches | 76  | 822    |
| Driver             | 15  | 162    |
| Carport            | 70  | 754    |
| Min. Plot area     | 767 | 8,256  |
| Max. Plot area     | 931 | 10,021 |



# SPARK II-M

DISCLAIMER

Water channel distances are for illustrative reasons, and are subject to change without notice.

TOTAL  
UNIT AREA: **498** SQM  
5,360 SQFT

*4 Bedrooms*

*2 En-suite + 2 Bedrooms*



# SPARK II-M

DISCLAIMER

Ancillary buildings are not shown on facade visuals.

TOTAL  
UNIT AREA: **498** SQM  
5,360 SQFT

*4 Bedrooms*

*2 En-suite + 2 Bedrooms*

# SPARK II-M

2 En-suite + 2 Bedrooms



Ground Floor plan

| Components     | CountNo. | Components    | CountNo. |
|----------------|----------|---------------|----------|
| Master Bedroom | 1        | Dining        | 1        |
| Bedrooms       | 3        | Maid's room   | 1        |
| Study Room     | 1        | Driver's room | 1        |
| Living Area    | 1        | Carport       | 2        |

**DISCLAIMER**

1. All room dimensions are measured to structural elements and exclude wall finishes and construction tolerances. 2. All dimensions have been provided by our consultant architects. 3. All materials, dimensions and drawings are approximate, information subject to change without notice. 4. Actual areas may vary from the stated area. Drawings not to scale. The developer reserves the right to make revisions. 5. Actual unit areas, front windows, porches, terraces, loggia and exterior trim detail may vary by elevation styles and floor level. 6. The unit orientation will be shown in the parcel layout and not as shown in the floor plans. 7. The location of ancillary buildings will vary from one plot to the other. 8. Study room can be converted to a guest bedroom if needed. 9. Pool design is indicative and subject to change at the developer's discretion without prior notice. 10. Pool locations will vary from one plot to the other. 11. The purchase price covers only the inclusion of pools and not the landscape.

TOTAL GROSS AREA: **385** SQM / 4,145 SQFT

TOTAL UNIT AREA: **498** SQM / 5,360 SQFT



First Floor plan

| Components         | SQM | SQFT   |
|--------------------|-----|--------|
| Ground-floor area  | 187 | 2,013  |
| First-floor area   | 149 | 1,608  |
| Terraces & Porches | 76  | 822    |
| Driver             | 15  | 162    |
| Carport            | 70  | 754    |
| Min. Plot area     | 767 | 8,256  |
| Max. Plot area     | 931 | 10,021 |



# GRACE II

DISCLAIMER

Water channel distances are for illustrative reasons, and are subject to change without notice.

TOTAL  
UNIT AREA: **313** SQM  
3,369 SQFT

**3 Bedrooms**

**1 En-suite + 2 Bedrooms**



# GRACE II

DISCLAIMER  
Ancillary buildings are not shown on facade visuals.

TOTAL  
UNIT AREA: **313** SQM  
3,369 SQFT

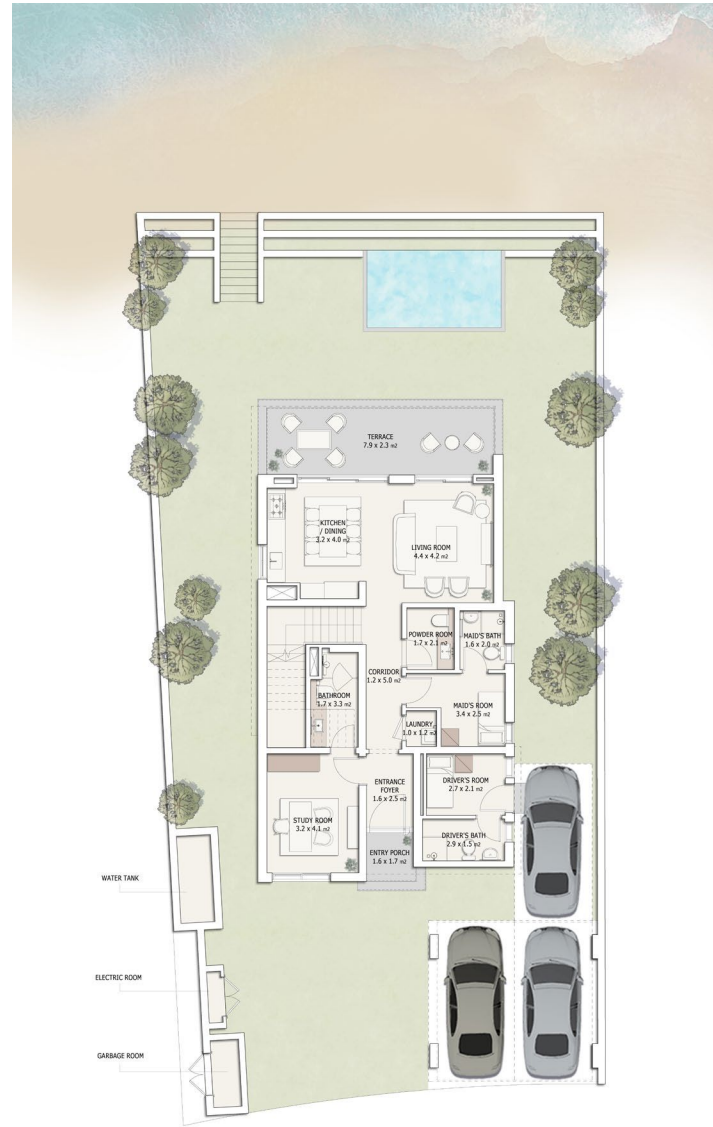
**3 Bedrooms**

**1 En-suite + 2 Bedrooms**

RAMHAN ISLAND  
**GRACE II**  
 1 En-suite + 2 Bedrooms

TOTAL GROSS AREA: **232** SQM / 2,496 SQFT

TOTAL UNIT AREA: **313** SQM / 3,369 SQFT



Ground Floor plan

| Components     | CountNo. | Components    | CountNo. |
|----------------|----------|---------------|----------|
| Master Bedroom | 1        | Dining        | 1        |
| Bedrooms       | 2        | Maid's room   | 1        |
| Study ROOM     | 1        | Driver's room | 1        |
| Living Area    | 1        | Carport       | 2        |

DISCLAIMER

1. All room dimensions are measured to structural elements and exclude wall finishes and construction tolerances. 2. All dimensions have been provided by our consultant architects. 3. All materials, dimensions and drawings are approximate, information subject to change without notice. 4. Actual areas may vary from the stated area. Drawings not to scale. The developer reserves the right to make revisions. 5. Actual unit areas, front windows, porches, terraces, loggia and exterior trim detail may vary by elevation styles and floor level. 6. The unit orientation will be shown in the parcel layout and not as shown in the floor plans. 7. The location of ancillary buildings will vary from one plot to the other. 8. Study room can be converted to a guest bedroom if needed. 9. Pool design is indicative and subject to change at the developer's discretion without prior notice. 10. Pool locations will vary from one plot to the other. 11. The purchase price covers only the inclusion of pools and not the landscape.



First Floor plan

| Components         | SQM | SQFT  |
|--------------------|-----|-------|
| Ground-floor area  | 121 | 1,304 |
| First-floor area   | 103 | 1,109 |
| Terraces & Porches | 41  | 438   |
| Driver             | 0   | 0     |
| Carport            | 48  | 519   |
| Min. Plot area     | 482 | 5,188 |
| Max. Plot area     | 681 | 7,330 |

z





# GRACE II-M

DISCLAIMER

Water channel distances are for illustrative reasons, and are subject to change without notice.

TOTAL  
UNIT AREA: **313** SQM  
3,369 SQFT

**3 Bedrooms**

**1 En-suite + 2 Bedrooms**



# GRACE II-M

DISCLAIMER

Ancillary buildings are not shown on facade visuals.

124

TOTAL  
UNIT AREA: **313** SQM  
3,369 SQFT

**3 Bedrooms**

**1 En-suite + 2 Bedrooms**

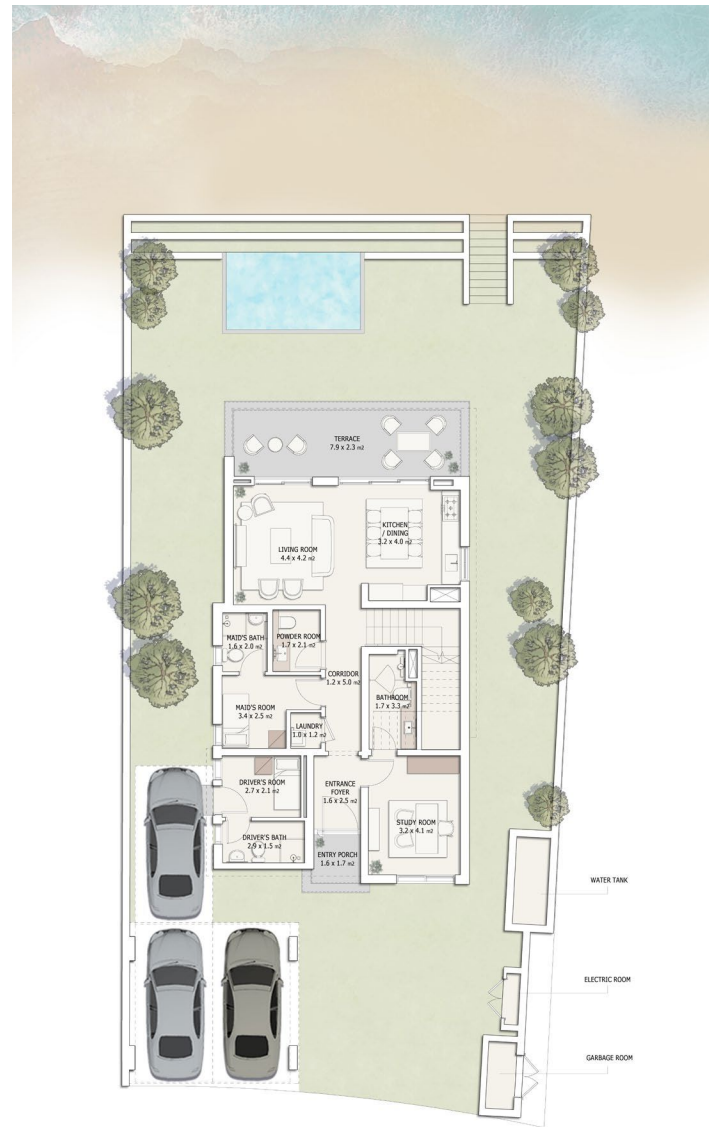
125

# GRACE II-M

1 En-suite + 2 Bedrooms

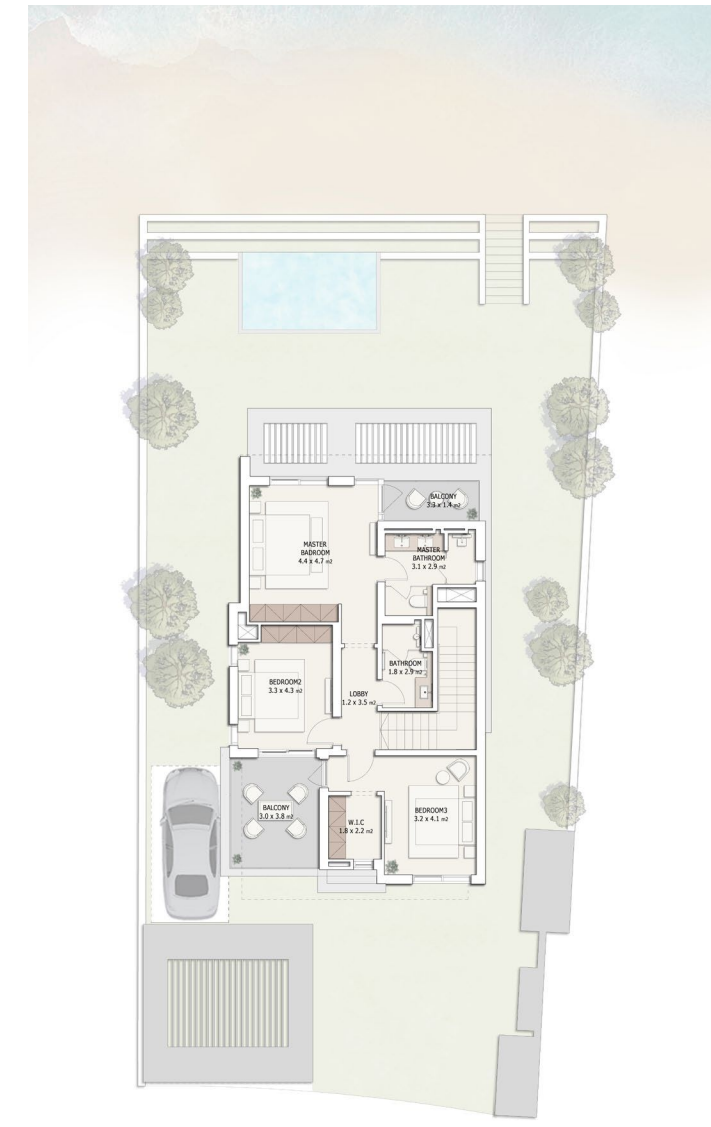
TOTAL GROSS AREA: **232** SQM / 2,496 SQFT

TOTAL UNIT AREA: **313** SQM / 3,369 SQFT



Ground Floor plan

| Components     | CountNo. | Components    | CountNo. |
|----------------|----------|---------------|----------|
| Master Bedroom | 1        | Dining        | 1        |
| Bedrooms       | 2        | Maid's room   | 1        |
| Study Room     | 1        | Driver's room | 1        |
| Living Area    | 1        | Carport       | 2        |



First Floor plan

| Components         | SQM | SQFT  |
|--------------------|-----|-------|
| Ground-floor area  | 121 | 1,301 |
| First-floor area   | 103 | 1,109 |
| Terraces & Porches | 41  | 438   |
| Driver             | 0   | 0     |
| Carport            | 48  | 519   |
| Min. Plot area     | 482 | 5,188 |
| Max. Plot area     | 681 | 7,330 |

**DISCLAIMER**

1. All room dimensions are measured to structural elements and exclude wall finishes and construction tolerances. 2. All dimensions have been provided by our consultant architects. 3. All materials, dimensions and drawings are approximate, information subject to change without notice. 4. Actual areas may vary from the stated area. Drawings not to scale. The developer reserves the right to make revisions. 5. Actual unit areas, front windows, porches, terraces, loggia and exterior trim detail may vary by elevation styles and floor level. 6. The unit orientation will be shown in the parcel layout and not as shown in the floor plans. 7. The location of ancillary buildings will vary from one plot to the other. 8. Study room can be converted to a guest bedroom if needed. 9. Pool design is indicative and subject to change at the developer's discretion without prior notice. 10. Pool locations will vary from one plot to the other. 11. The purchase price covers only the inclusion of pools and not the landscape.



# GRACE III

DISCLAIMER

Water channel distances are for illustrative reasons, and are subject to change without notice.

TOTAL  
UNIT AREA: **351** SQM  
3,774 SQFT

**3 Bedrooms**

**1 En-suite + 2 Bedrooms**



# GRACE III

DISCLAIMER

Ancillary buildings are not shown on facade visuals.

130

TOTAL  
UNIT AREA: **351** SQM  
3,774 SQFT

**3 Bedrooms**

**1 En-suite + 2 Bedrooms**

131

RAMHAN ISLAND  
**GRACE III**  
 1 En-suite + 2 Bedrooms

TOTAL GROSS AREA: **287** SQM / 3,091 SQFT

TOTAL UNIT AREA: **351** SQM / 3,774 SQFT



Ground Floor plan

| Components     | CountNo. | Components    | CountNo. |
|----------------|----------|---------------|----------|
| Master Bedroom | 1        | Dining        | 1        |
| Bedrooms       | 2        | Maid's room   | 1        |
| Study Room     | 1        | Driver's room | 1        |
| Living Area    | 1        | Carport       | 2        |

DISCLAIMER

1. All room dimensions are measured to structural elements and exclude wall finishes and construction tolerances. 2. All dimensions have been provided by our consultant architects. 3. All materials, dimensions and drawings are approximate, information subject to change without notice. 4. Actual areas may vary from the stated area. Drawings not to scale. The developer reserves the right to make revisions. 5. Actual unit areas, front windows, porches, terraces, loggia and exterior trim detail may vary by elevation styles and floor level. 6. The unit orientation will be shown in the parcel layout and not as shown in the floor plans. 7. The location of ancillary buildings will vary from one plot to the other. 8. Study room can be converted to a guest bedroom if needed. 9. Pool design is indicative and subject to change at the developer's discretion without prior notice. 10. Pool locations will vary from one plot to the other. 11. The purchase price covers only the inclusion of pools and not the landscape.



First Floor plan

| Components         | SQM | SQFT  |
|--------------------|-----|-------|
| Ground-floor area  | 129 | 1,392 |
| First-floor area   | 101 | 1,087 |
| Terraces & Porches | 69  | 743   |
| Driver             | 0   | 0     |
| Carport            | 51  | 552   |
| Min. Plot area     | 495 | 5,328 |
| Max. Plot area     | 698 | 7,513 |



# GRACE III-M

DISCLAIMER

Water channel distances are for illustrative reasons, and are subject to change without notice.

TOTAL  
UNIT AREA: **351** SQM  
3,774 SQFT

**3 Bedrooms**

**1 En-suite + 2 Bedrooms**



# GRACE III-M

DISCLAIMER

Ancillary buildings are not shown on facade visuals.

136

TOTAL  
UNIT AREA: **351** SQM  
3,774 SQFT

**3 Bedrooms**

**1 En-suite + 2 Bedrooms**

137

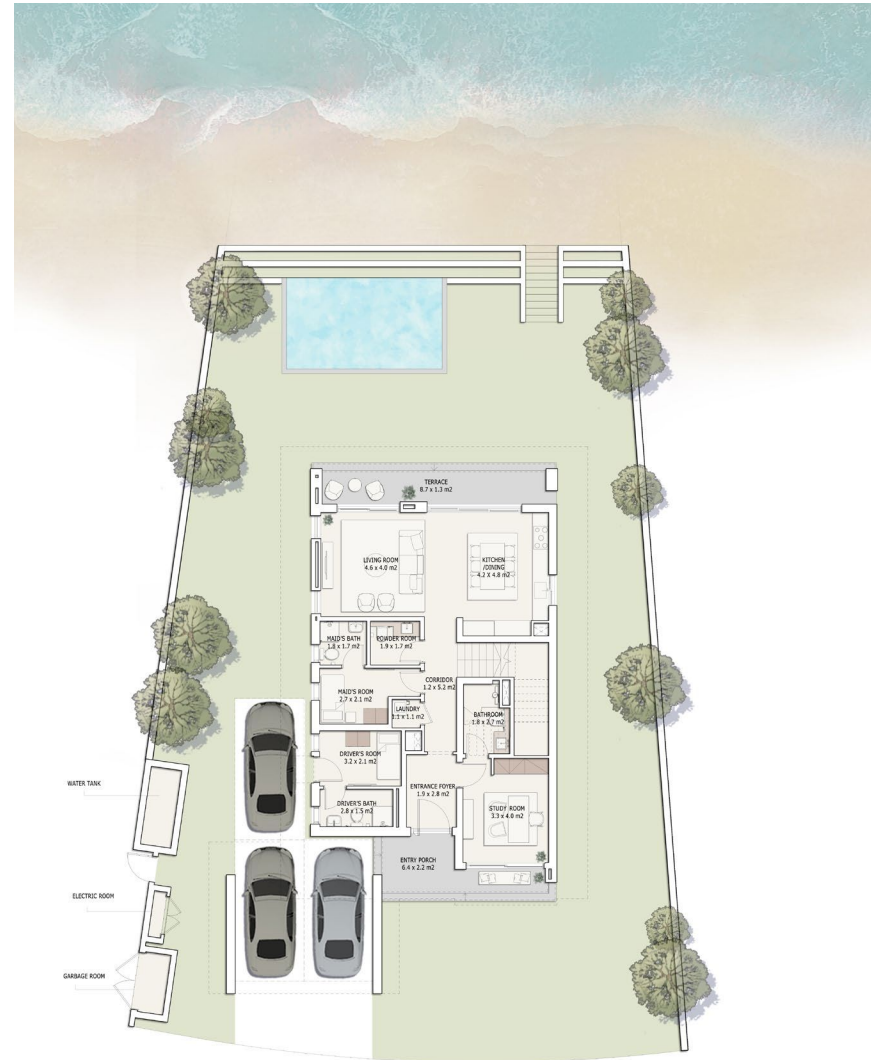


# GRACE III-M

1 En-suite + 2 Bedrooms

TOTAL GROSS AREA: **287** SQM / 3,091 SQFT

TOTAL UNIT AREA: **351** SQM / 3,774 SQFT



Ground Floor plan

| Components     | CountNo. | Components    | CountNo. |
|----------------|----------|---------------|----------|
| Master Bedroom | 1        | Dining        | 1        |
| Bedrooms       | 2        | Maid's room   | 1        |
| Study Room     | 1        | Driver's room | 1        |
| Living Area    | 1        | Carport       | 2        |



First Floor plan

| Components         | SQM | SQFT  |
|--------------------|-----|-------|
| Ground-floor area  | 129 | 1,392 |
| First-floor area   | 101 | 1,087 |
| Terraces & Porches | 69  | 743   |
| Driver             | 0   | 0     |
| Carport            | 51  | 552   |
| Min. Plot area     | 495 | 5,328 |
| Max. Plot area     | 698 | 7,513 |

**DISCLAIMER**

1. All room dimensions are measured to structural elements and exclude wall finishes and construction tolerances. 2. All dimensions have been provided by our consultant architects. 3. All materials, dimensions and drawings are approximate, information subject to change without notice. 4. Actual areas may vary from the stated area. Drawings not to scale. The developer reserves the right to make revisions. 5. Actual unit areas, front windows, porches, terraces, loggia and exterior trim detail may vary by elevation styles and floor level. 6. The unit orientation will be shown in the parcel layout and not as shown in the floor plans. 7. The location of ancillary buildings will vary from one plot to the other. 8. Study room can be converted to a guest bedroom if needed. 9. Pool design is indicative and subject to change at the developer's discretion without prior notice. 10. Pool locations will vary from one plot to the other. 11. The purchase price covers only the inclusion of pools and not the landscape.



# CHARM III

DISCLAIMER

Water channel distances are for illustrative reasons, and are subject to change without notice.

TOTAL  
UNIT AREA: **352** SQM  
3,788 SQFT

*3 En-suite Bedrooms*



# CHARM III

DISCLAIMER

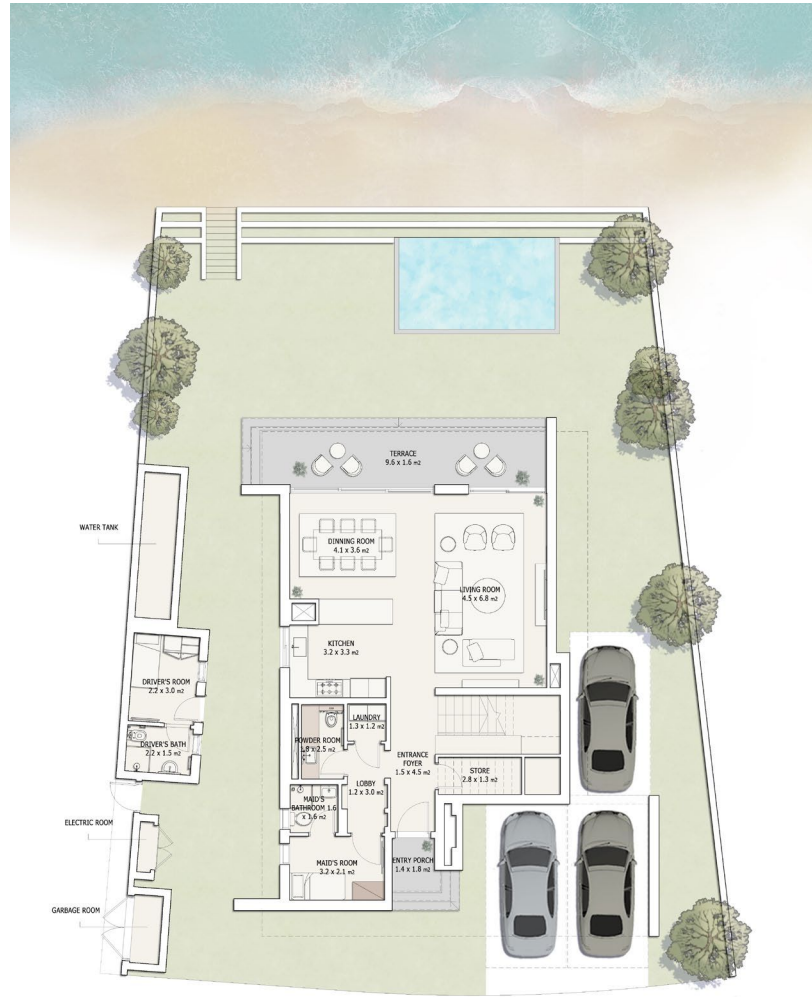
Ancillary buildings are not shown on facade visuals.

TOTAL  
UNIT AREA: **352** SQM  
3,788 SQFT

*3 En-suite Bedrooms*

RAMHAN ISLAND  
**CHARM III**  
 3 En-suite Bedrooms

TOTAL GROSS AREA: **265** SQM / 2,858 SQFT  
 TOTAL UNIT AREA: **352** SQM / 3,788 SQFT



Ground Floor plan

| Components     | CountNo. | Components    | CountNo. |
|----------------|----------|---------------|----------|
| Master Bedroom | 1        | Dining        | 1        |
| Bedrooms       | 2        | Maid's room   | 1        |
| Study Room     | -        | Driver's room | 1        |
| Living Area    | 1        | Carport       | 2        |

DISCLAIMER

1. All room dimensions are measured to structural elements and exclude wall finishes and construction tolerances. 2. All dimensions have been provided by our consultant architects. 3. All materials, dimensions and drawings are approximate, information subject to change without notice. 4. Actual areas may vary from the stated area. Drawings not to scale. The developer reserves the right to make revisions. 5. Actual unit areas, front windows, porches, terraces, loggia and exterior trim detail may vary by elevation styles and floor level. 6. The unit orientation will be shown in the parcel layout and not as shown in the floor plans. 7. The location of ancillary buildings will vary from one plot to the other. 8. Study room can be converted to a guest bedroom if needed. 9. Pool design is indicative and subject to change at the developer's discretion without prior notice. 10. Pool locations will vary from one plot to the other. 11. The purchase price covers only the inclusion of pools and not the landscape.



First Floor plan

| Components         | SQM | SQFT  |
|--------------------|-----|-------|
| Ground-floor area  | 119 | 1,277 |
| First-floor area   | 121 | 1,303 |
| Terraces & Porches | 50  | 539   |
| Driver             | 15  | 157   |
| Carport            | 48  | 512   |
| Min. Plot area     | 546 | 5,877 |
| Max. Plot area     | 697 | 7,502 |



# CHARM III-M

DISCLAIMER

Water channel distances are for illustrative reasons, and are subject to change without notice.

TOTAL  
UNIT AREA: **352** SQM  
3,788 SQFT

*3 En-suite Bedrooms*



# CHARM III-M

DISCLAIMER

Ancillary buildings are not shown on facade visuals.

TOTAL  
UNIT AREA: **352** SQM  
3,788 SQFT

*3 En-suite Bedrooms*

# CHARM III-M

3 En-suite Bedrooms

TOTAL GROSS AREA: **265** SQM / 2,858 SQFT

TOTAL UNIT AREA: **352** SQM / 3,788 SQFT

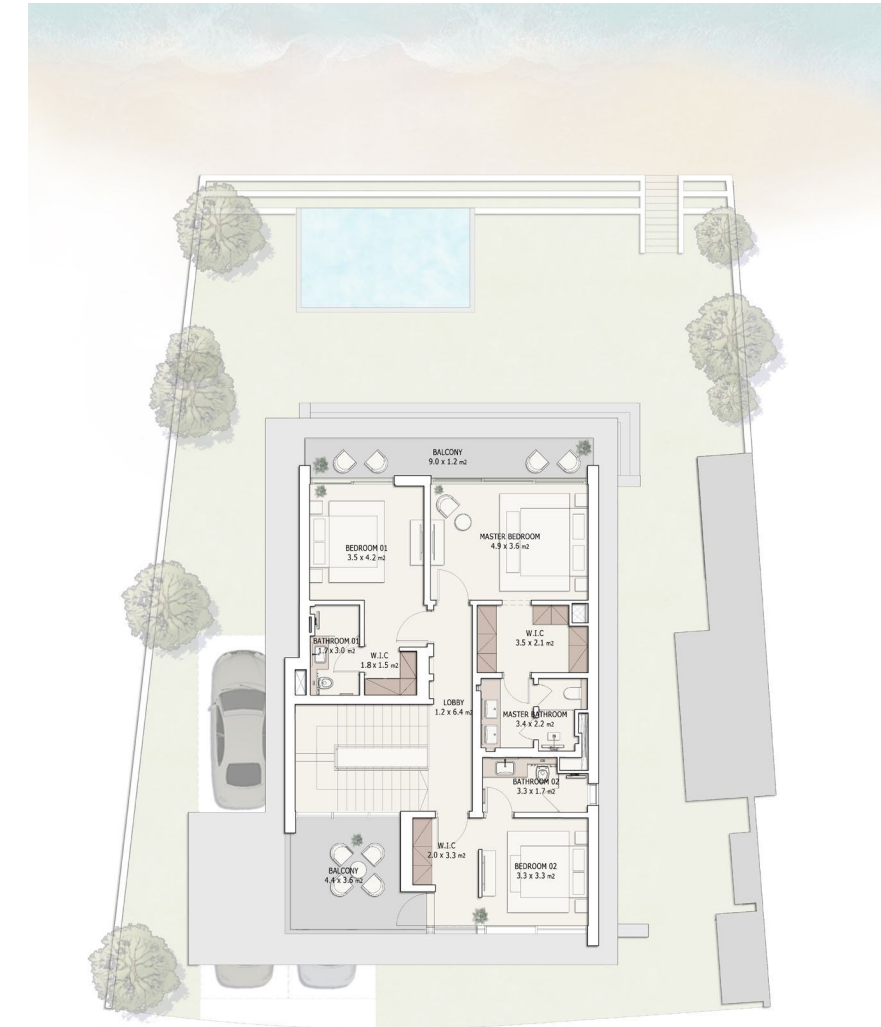


Ground Floor plan

| Components     | CountNo. | Components    | CountNo. |
|----------------|----------|---------------|----------|
| Master Bedroom | 1        | Dining        | 1        |
| Bedrooms       | 2        | Maid's room   | 1        |
| Study Room     | -        | Driver's room | 1        |
| Living Area    | 1        | Carport       | 2        |

**DISCLAIMER**

1. All room dimensions are measured to structural elements and exclude wall finishes and construction tolerances. 2. All dimensions have been provided by our consultant architects. 3. All materials, dimensions and drawings are approximate, information subject to change without notice. 4. Actual areas may vary from the stated area. Drawings not to scale. The developer reserves the right to make revisions. 5. Actual unit areas, front windows, porches, terraces, loggia and exterior trim detail may vary by elevation styles and floor level. 6. The unit orientation will be shown in the parcel layout and not as shown in the floor plans. 7. The location of ancillary buildings will vary from one plot to the other. 8. Study room can be converted to a guest bedroom if needed. 9. Pool design is indicative and subject to change at the developer's discretion without prior notice. 10. Pool locations will vary from one plot to the other. 11. The purchase price covers only the inclusion of pools and not the landscape.



First Floor plan

| Components         | SQM | SQFT  |
|--------------------|-----|-------|
| Ground-floor area  | 119 | 1,277 |
| First-floor area   | 121 | 1,303 |
| Terraces & Porches | 50  | 539   |
| Driver             | 15  | 157   |
| Carport            | 48  | 512   |
| Min. Plot area     | 546 | 5,877 |
| Max. Plot area     | 697 | 7,502 |



# CHARM IV

DISCLAIMER

Water channel distances are for illustrative reasons, and are subject to change without notice.

TOTAL  
UNIT AREA: **362** SQM  
3,899 SQFT

*3 En-suite Bedrooms*





# CHARM IV

DISCLAIMER

Ancillary buildings are not shown on facade visuals.

154

TOTAL  
UNIT AREA: **362** SQM  
3,899 SQFT

*3 En-suite Bedrooms*

155

# RAMHAN ISLAND CHARM IV

3 En-suite Bedrooms



Ground Floor plan

| Components     | CountNo. | Components    | CountNo. |
|----------------|----------|---------------|----------|
| Master Bedroom | 1        | Dining        | 1        |
| Bedrooms       | 2        | Maid's room   | 1        |
| Guest Bedroom  | -        | Driver's room | 1        |
| Living Area    | 1        | Carport       | 2        |

#### DISCLAIMER

1. All room dimensions are measured to structural elements and exclude wall finishes and construction tolerances. 2. All dimensions have been provided by our consultant architects. 3. All materials, dimensions and drawings are approximate, information subject to change without notice. 4. Actual areas may vary from the stated area. Drawings not to scale. The developer reserves the right to make revisions. 5. Actual unit areas, front windows, porches, terraces, loggia and exterior trim detail may vary by elevation styles and floor level. 6. The unit orientation will be shown in the parcel layout and not as shown in the floor plans. 7. The location of ancillary buildings will vary from one plot to the other. 8. Study room can be converted to a guest bedroom if needed. 9. Pool design is indicative and subject to change at the developer's discretion without prior notice. 10. Pool locations will vary from one plot to the other. 11. The purchase price covers only the inclusion of pools and not the landscape.

TOTAL GROSS AREA: **275** SQM / 2,955 SQFT

TOTAL UNIT AREA: **362** SQM / 3,899 SQFT



First Floor plan

| Components         | SQM | SQFT  |
|--------------------|-----|-------|
| Ground-floor area  | 114 | 1,224 |
| First-floor area   | 127 | 1,371 |
| Terraces & Porches | 51  | 552   |
| Driver             | 14  | 155   |
| Carport            | 55  | 597   |
| Min. Plot area     | 546 | 5,877 |
| Max. Plot area     | 684 | 7,363 |



# CHARM IV-M

DISCLAIMER

Water channel distances are for illustrative reasons, and are subject to change without notice.

TOTAL  
UNIT AREA: **362** SQM  
3,899 SQFT

*3 En-suite Bedrooms*



# CHARM IV-M

DISCLAIMER

Ancillary buildings are not shown on facade visuals.

160

TOTAL  
UNIT AREA: **362** SQM  
3,899 SQFT

*3 En-suite Bedrooms*

161

# CHARM IV-M

3 En-suite Bedrooms



Ground Floor plan

| Components     | CountNo. | Components    | CountNo. |
|----------------|----------|---------------|----------|
| Master Bedroom | 1        | Dining        | 1        |
| Bedrooms       | 2        | Maid's room   | 1        |
| Study Room     | -        | Driver's room | 1        |
| Living Area    | 1        | Carport       | 2        |

**DISCLAIMER**

1. All room dimensions are measured to structural elements and exclude wall finishes and construction tolerances. 2. All dimensions have been provided by our consultant architects. 3. All materials, dimensions and drawings are approximate, information subject to change without notice. 4. Actual areas may vary from the stated area. Drawings not to scale. The developer reserves the right to make revisions. 5. Actual unit areas, front windows, porches, terraces, loggia and exterior trim detail may vary by elevation styles and floor level. 6. The unit orientation will be shown in the parcel layout and not as shown in the floor plans. 7. The location of ancillary buildings will vary from one plot to the other. 8. Study room can be converted to a guest bedroom if needed. 9. Pool design is indicative and subject to change at the developer's discretion without prior notice. 10. Pool locations will vary from one plot to the other. 11. The purchase price covers only the inclusion of pools and not the landscape.

TOTAL GROSS AREA: **275** SQM / 2,955 SQFT

TOTAL UNIT AREA: **362** SQM / 3,899 SQFT



First Floor plan

| Components         | SQM | SQFT  |
|--------------------|-----|-------|
| Ground-floor area  | 114 | 1,224 |
| First-floor area   | 127 | 1,371 |
| Terraces & Porches | 51  | 552   |
| Driver             | 14  | 155   |
| Carport            | 55  | 597   |
| Min. Plot area     | 546 | 5,877 |
| Max. Plot area     | 684 | 7,363 |



Scheme 1 - Living Space



Scheme 1 - Living Space



Scheme 1 - Bedroom





Scheme 2 - Living Space



Scheme 2 - Bedroom



Scheme 2 - Bathroom

**1. ENTRY FOYER**

- FLOORS HIGH QUALITY MARBLE
- WALLS PAINT
- CEILING PAINT

**2. LIVING AREAS & DINING ROOM**

- FLOORS HIGH QUALITY MARBLE
- WALLS PAINT
- CEILING PAINT

**3. KITCHEN/GOURMET CABINET**

- FLOORS HIGH QUALITY MARBLE
- WALLS PAINT
- CEILING PAINT
- COUNTERTOP HIGH QUALITY STONE

**4. DOORS**

- ENTRANCE SOLID WOODWORK
- INTERNAL DOORS STAINED VENEER WOODWORK

**5. POWDER ROOM & BATHROOMS**

- FLOORS HIGH QUALITY MARBLE
- WALLS HIGH QUALITY MARBLE/PAINT
- CEILING PAINT

**6. ALL BEDROOMS**

- FLOORS ENGINEERED WOOD
- WALLS PAINT
- CEILING PAINT

**7. UTILITY ROOMS & BATHS**

- FLOORS HIGH QUALITY TILES
- WALLS HIGH QUALITY TILES/PAINT
- CEILING PAINT

**8. SANITARYWARE**

- HIGH QUALITY SANITARY FIXTURES & FITTINGS

**9. AIR CONDITIONING UNITS**

- INCLUDED

**10. WATER HEATER**

- INCLUDED

**11. KITCHEN APPLIANCES**

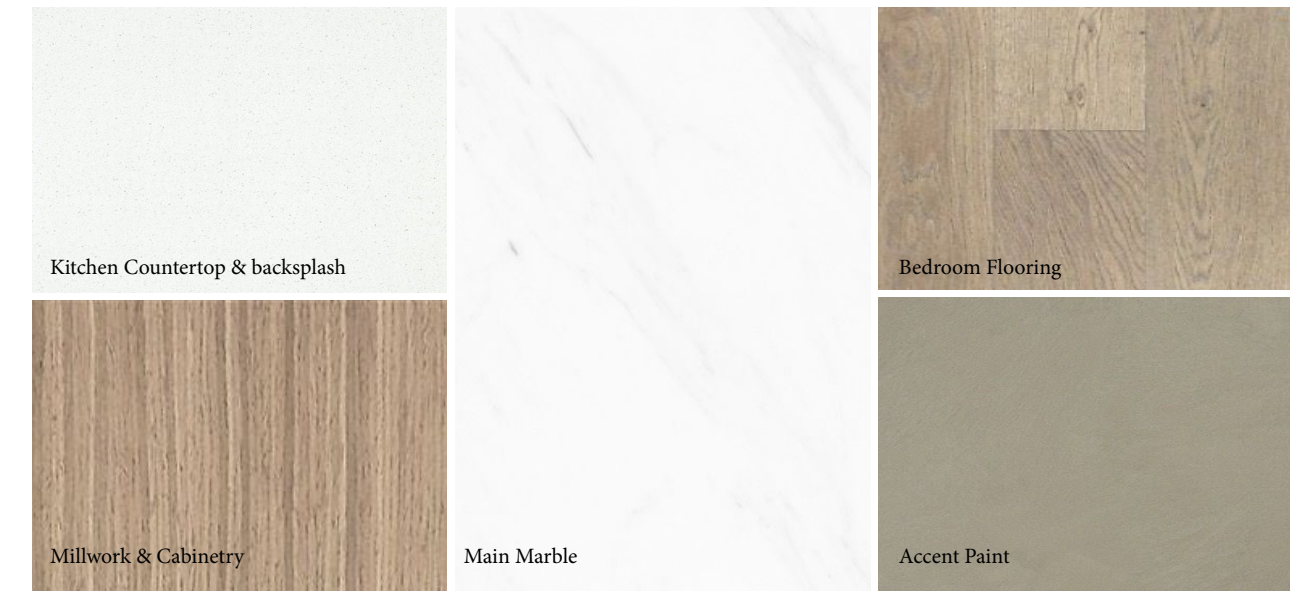
- NOT INCLUDED

**12. CABINETS, WARDROBES & WIC**

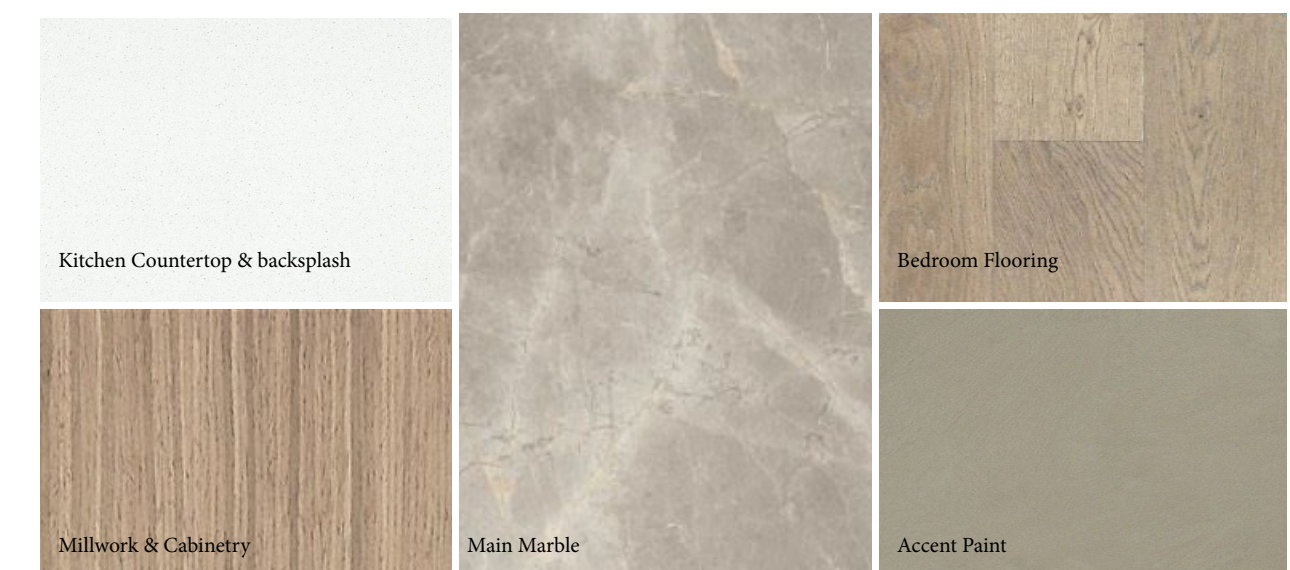
- INCLUDED

**13. SWIMMING POOL**

- INCLUDED



**LIGHT SCHEME**



**DARK SCHEME**

All materials are tentative. Information is subject to change without notice depending on availability of the specified materials.

**1. ENTRY FOYER**

- FLOORS HIGH QUALITY MARBLE
- WALLS PAINT
- CEILING PAINT

**2. LIVING AREAS & DINING ROOM**

- FLOORS HIGH QUALITY WOOD
- WALLS PAINT
- CEILING PAINT

**3. KITCHEN/GOURMET CABINET**

- FLOORS HIGH QUALITY MARBLE
- WALLS PAINT
- CEILING PAINT
- COUNTERTOP HIGH QUALITY STONE

**4. DOORS**

- ENTRANCE SOLID WOODWORK
- INTERNAL DOORS STAINED VENEER WOODWORK

**5. POWDER ROOM & BATHROOMS**

- FLOORS HIGH QUALITY MARBLE
- WALLS HIGH QUALITY MARBLE/PAINT
- CEILING PAINT

**6. ALL BEDROOMS**

- FLOORS ENGINEERED WOOD
- WALLS PAINT
- CEILING PAINT

**7. UTILITY ROOMS & BATHS**

- FLOORS HIGH QUALITY TILES
- WALLS HIGH QUALITY TILES/PAINT
- CEILING PAINT

**8. SANITARYWARE**

- HIGH QUALITY SANITARY FIXTURES & FITTINGS

**9. AIR CONDITIONING UNITS**

- INCLUDED

**10. WATER HEATER**

- INCLUDED

**11. KITCHEN APPLIANCES**

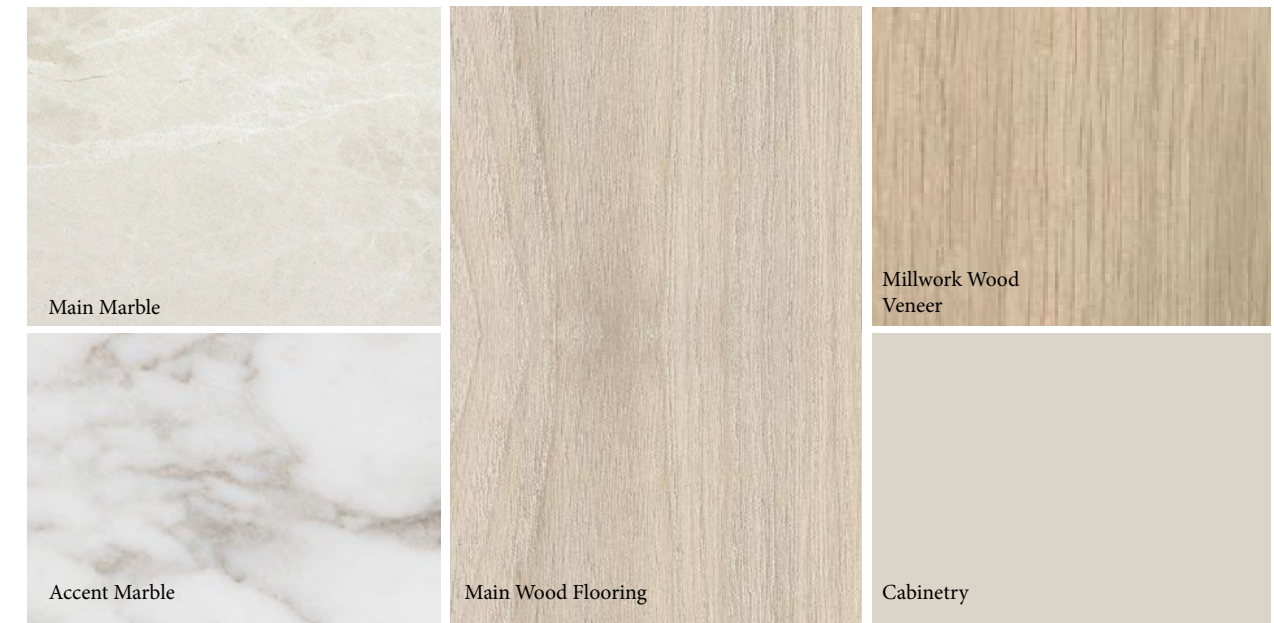
- NOT INCLUDED

**12. CABINETS, WARDROBES & WIC**

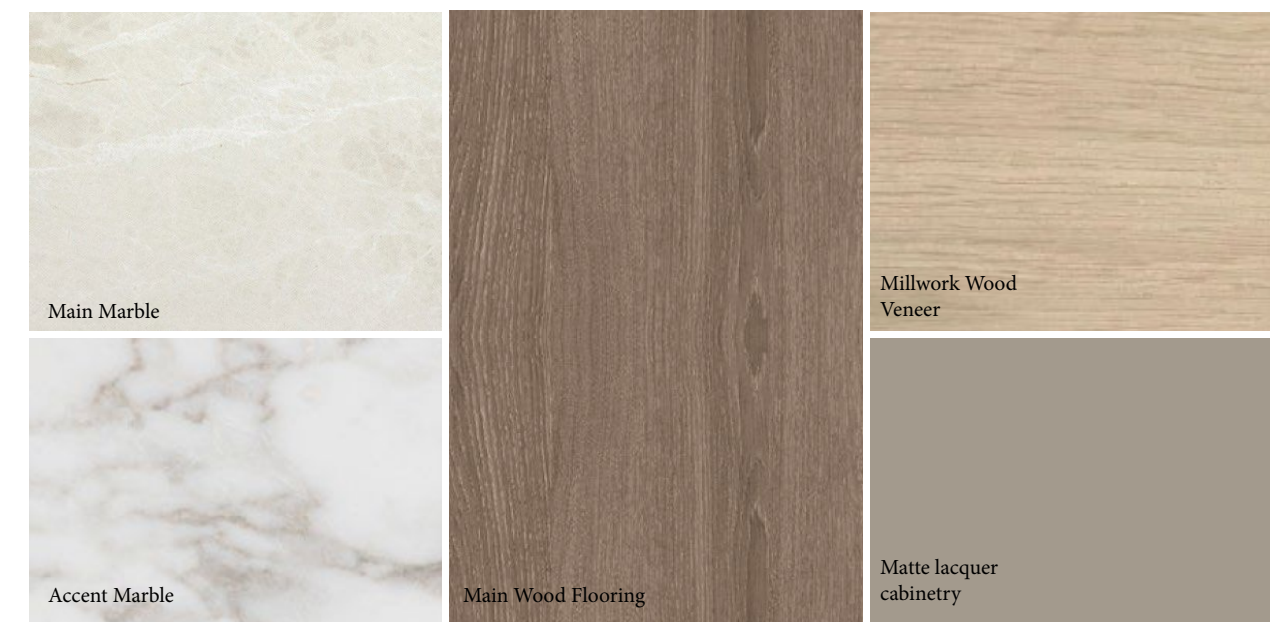
- INCLUDED

**13. SWIMMING POOL**

- INCLUDED



LIGHT SCHEME



DARK SCHEME

All materials are tentative. Information is subject to change without notice depending on availability of the specified materials.

