



LUME

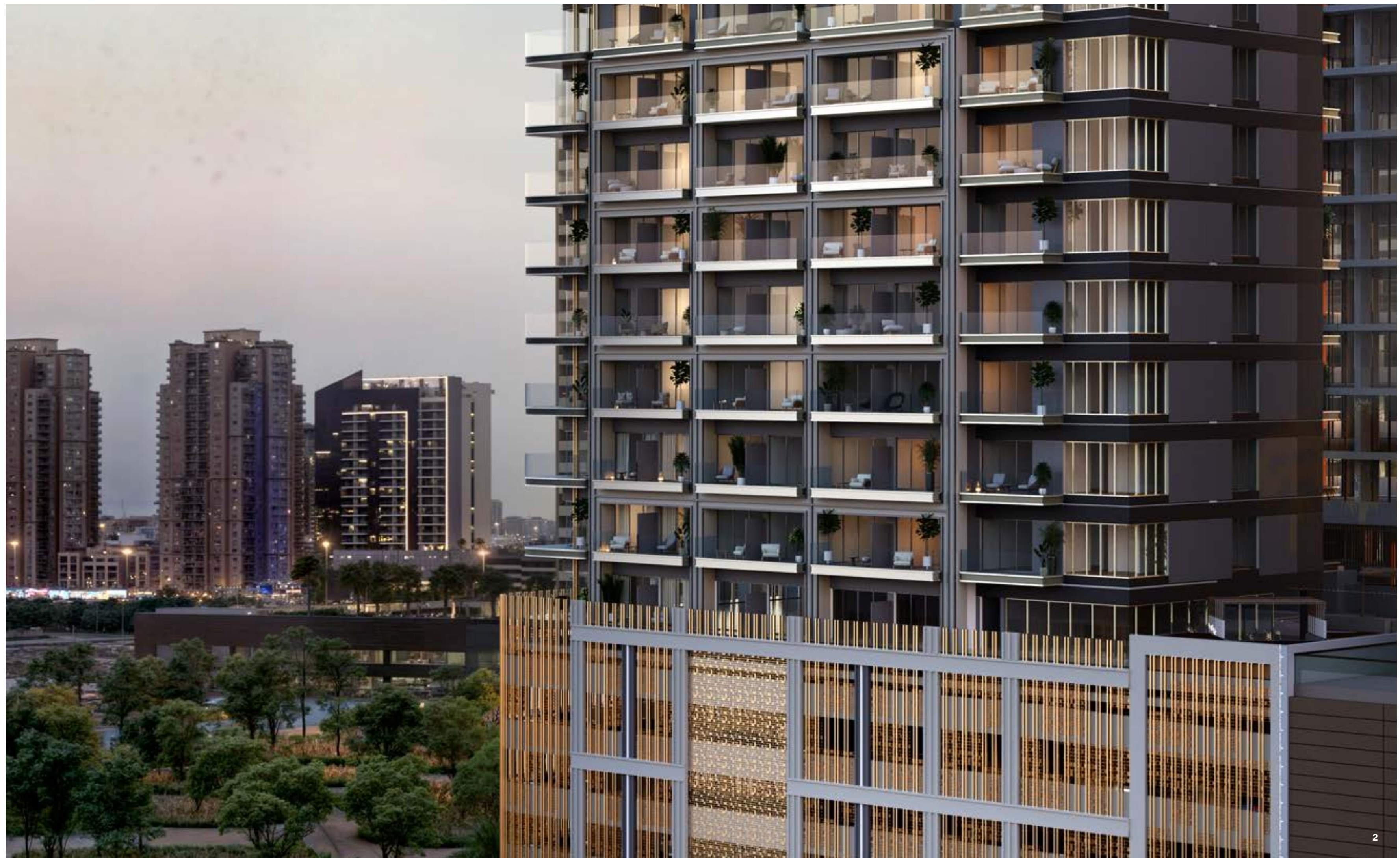
BRIGHT. BOLD. YOURS.

JUMEIRAH VILLAGE CIRCLE

LUME

ILLUMINATED LIVING





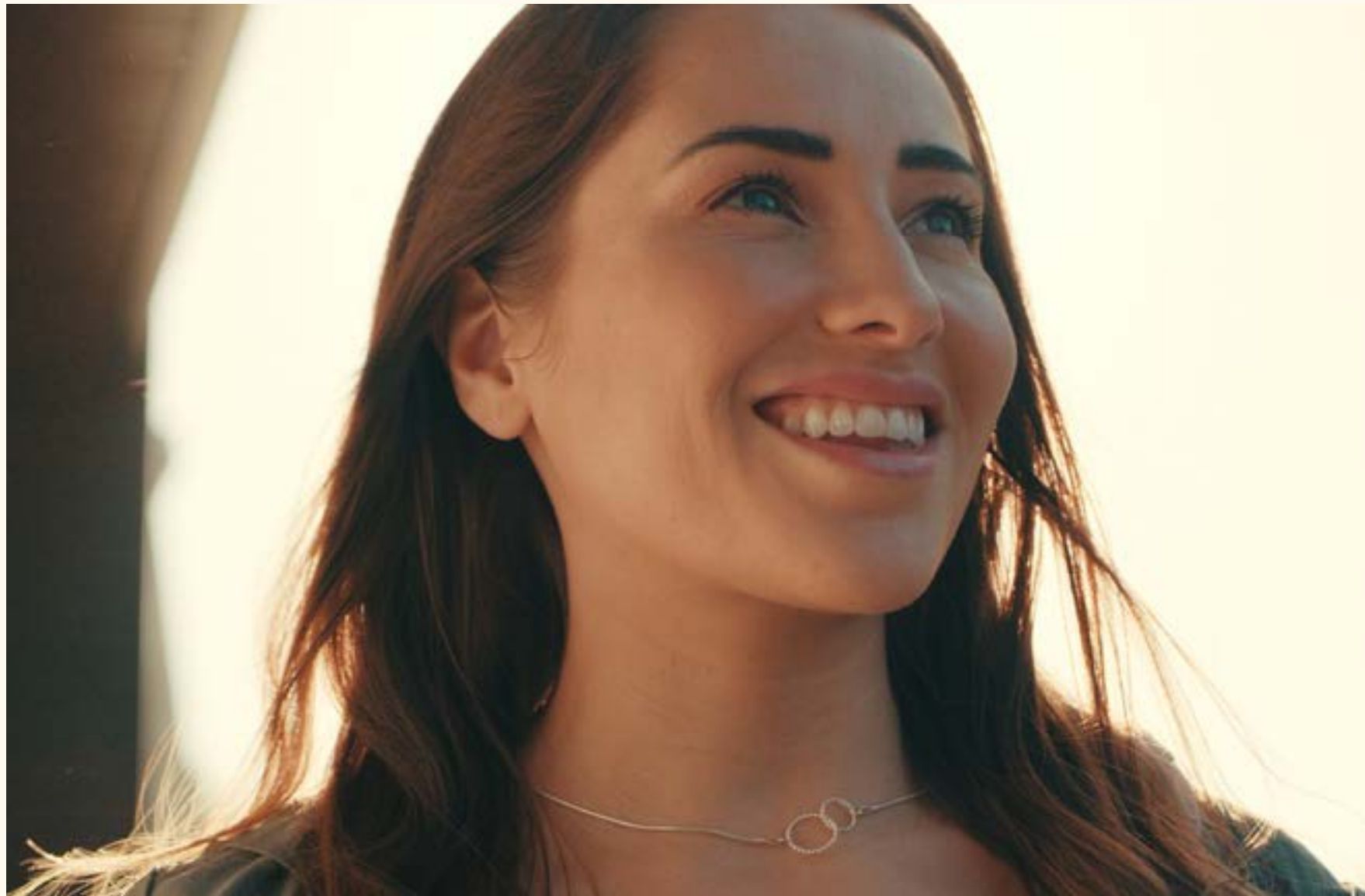
LUME

INTRODUCTION

SHINING A LIGHT ON BETTER LIVING

Where simplicity meets satisfaction,
and energy ignites excitement.
LUME is a space designed to reflect
the vibrancy of our community –
future-forward, bright, and bold. It is
illuminated living at its finest, bringing
more life in with every detail.





WHERE LIGHT INSPIRES LIFE

LUME is more than just home – it is where energy meets ease. It is illuminated living, a space as dynamic and bright as you are. Nestled in one of Dubai’s most vibrant communities, Jumeirah Village Circle, LUME defines urban deco. It is urbane chic married to fine details, designed to keep pace with your lifestyle while offering seamless access to the city’s best.

Each space has been crafted with purpose, seamlessly connecting indoor and outdoor living, and designed to bring more light into every moment.



A BRIGHTER WAY TO LIVE

Where the vibrancy of the city meets the serenity of home. Situated in the heart of Jumeirah Village Circle, LUME offers effortless access to everything you need, connecting you to the best of Dubai while providing a peaceful retreat with all local conveniences at your doorstep. It is a lifestyle where energy and tranquility converge, allowing you to experience the best of both worlds. Here, every day feels as bright and exciting as the world around you, while providing an urban atmosphere.



LOCATION

AT THE HEART OF JVC

Strategically located at the heart of Jumeirah Village Circle, LUME offers effortless access to the dynamic energy of Dubai while providing an urban sanctuary. Positioned between Sheikh Mohammed Bin Zayed Road (E311) and Al Khail Road (E44), with direct routes to Hessa Street, LUME ensures that business or leisure is always within reach. Just minutes away from key destinations like Downtown Dubai, Dubai Marina, and Palm Jumeirah, LUME places nearby attractions and community hotspots at your doorstep.




WHERE THE CITY SHINES



Jumeirah Village Circle sets the stage for LUME, a community that is full of energy and potential. Whether it is savoring the trendy eateries, discovering boutique stores at Circle Mall or unwinding in the well-maintained parks, Jumeirah Village Circle offers endless opportunities to enjoy both excitement and relaxation.

The area's unique combination of vibrancy and calm makes it the ideal place for those looking for balance. LUME is the ideal choice for young professionals and couples seeking a vibrant social scene, while families can enjoy the comfort of lush green spaces and the convenience of nearby schools.

YOUR LINK TO LIVING

-  **SCHOOLS**
-  **MEDICAL CENTRES**
-  **SHOPPING**
-  **SUPERMARKET**



	DUBAI HILLS MALL	10 minutes
	THE PALM JUMEIRAH	18 minutes
	DUBAI MARINA	20 minutes
	AIN DUBAI	20 minutes
	JUMEIRAH BEACH	25 minutes
	DXB INT. AIRPORT	30 minutes



RESIDENCES





DESIGNED TO SHINE

Step into LUME, where design seamlessly integrates with functionality, and every space is curated to your lifestyle. The public areas feature warm terracotta and burgundy tones with off-white accents, creating a cozy and sophisticated atmosphere, while onyx marble adds a luxurious touch. Brushed gold finishes and reflective wall accents enhance the elegance of these spaces, and wood laminate paneling paired with contemporary lounge furniture in earthy tones creates a balanced, modern look. These details carry throughout the interiors, ensuring a cohesive flow where every apartment is carefully crafted with attention to detail.





RADIANCE IN EVERY DETAIL

	BUILDING STRUCTURE	G + 4P + 14 floors
	RESIDENTIAL UNITS	178 units
	UNIT MIX	Studio, 1 & 2 bedroom
	UNIT SIZE	Up to 1,318 SQ FT

The interplay of natural light, premium finishes, and modern fixtures defines LUME. Each apartment features carefully selected materials, from sleek, high-quality laminate wood flooring to custom-designed cabinetry and countertops. Thoughtfully designed layouts provide a perfect balance of intimacy and openness, offering spaces that adapt to your lifestyle.

Floor-to-ceiling windows maximize natural light and connect to the outdoors, bringing the energy of Jumeirah Village Circle inside and transforming every apartment into a haven of comfort. Smartly placed nooks and refined details – such as state-of-the-art appliances, rich terracotta and burgundy paint and fabrics, and custom pendant lighting – add a mature, timeless touch, allowing you to live, work, and soak in the energy of your surroundings.



TWO-BED MASTER BEDROOM

LIGHT UP YOUR EVERYDAY

Our interiors are crafted to elevate urban living with a refined urban deco aesthetic, creating a stylish sanctuary for every resident. Off-white shades with wood laminate finishes introduce a serene, minimalist ambiance, while chevron wood-look porcelain in the bedrooms and stone-look porcelain in the bathrooms add texture and elegance.

Brushed gold accents in the bathroom fixtures bring sophistication and warmth, complemented by custom lighting and niches that create intimate, elegant spaces. Burgundy and terracotta fabrics add vibrant accents, balancing the calm aesthetic and infusing the interiors with a welcoming energy. Integrated appliances and expansive wardrobe space enhance convenience, ensuring every detail is crafted for modern, effortless living.



















AMENITIES

BRILLIANCE IN EVERY MOMENT

Every amenity has been designed to reflect the energy, vibrance, and simplicity that define illuminated living.

Whether you are lounging in the Club House, savoring a barbecue under the gazebo, enjoying the tranquility of the communal garden, taking a dip in the leisure pool, or engaging in a friendly match on the padel court, every space is created with your convenience in mind and offers the perfect setting to connect with friends and neighbors.

LUME offers everything you need to make the most of every moment.

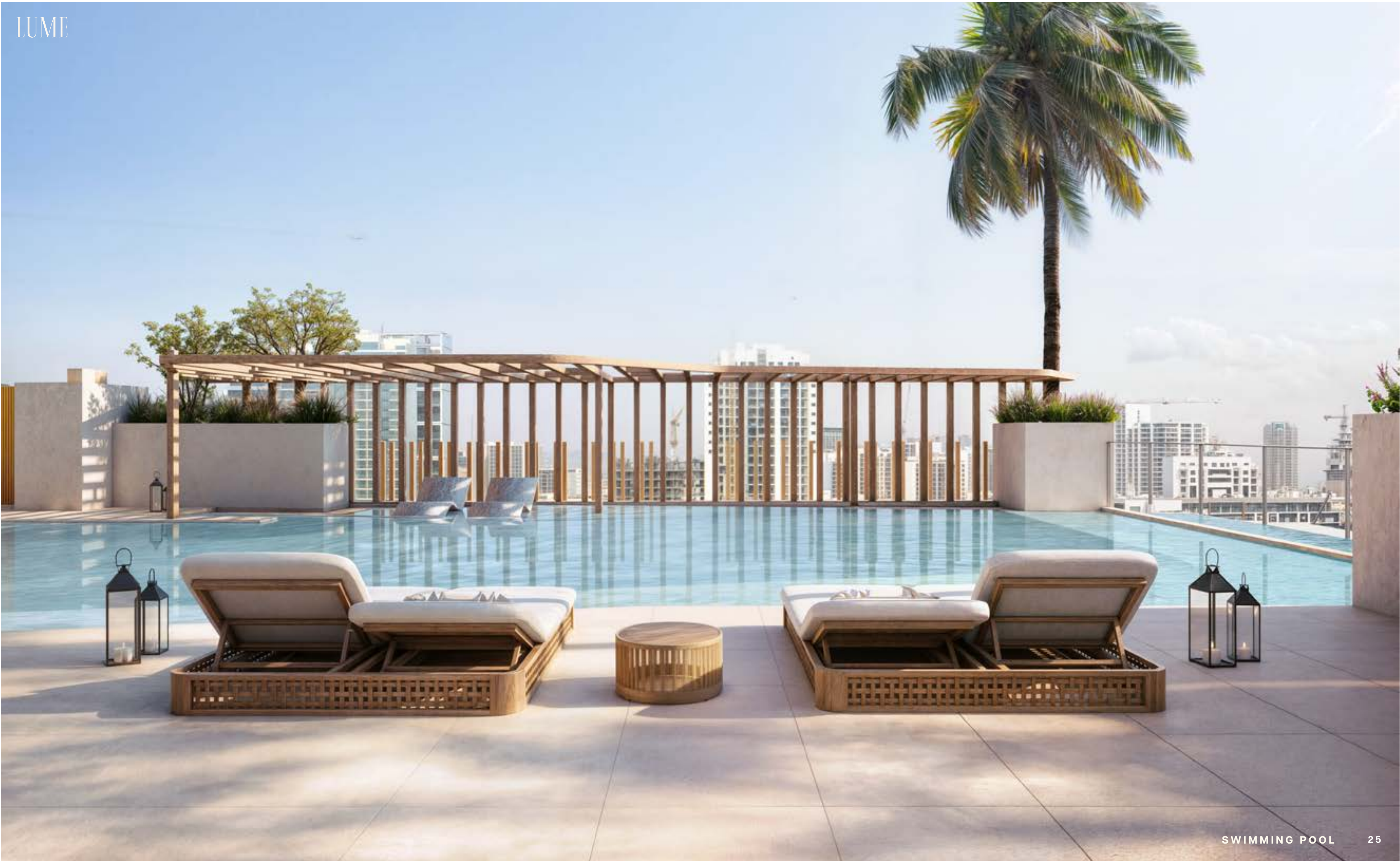
SPARK YOUR SENSES

- | | |
|-----------------|------------------------|
| ● CLUB HOUSE | ● OUTDOOR FITNESS AREA |
| ● PADEL COURT | ● OUTDOOR EVENTS AREA |
| ● SWIMMING POOL | ● LOUNGE SEATING AREA |
| ● INDOOR GYM | ● GAZEBO (BBQ AREA) |



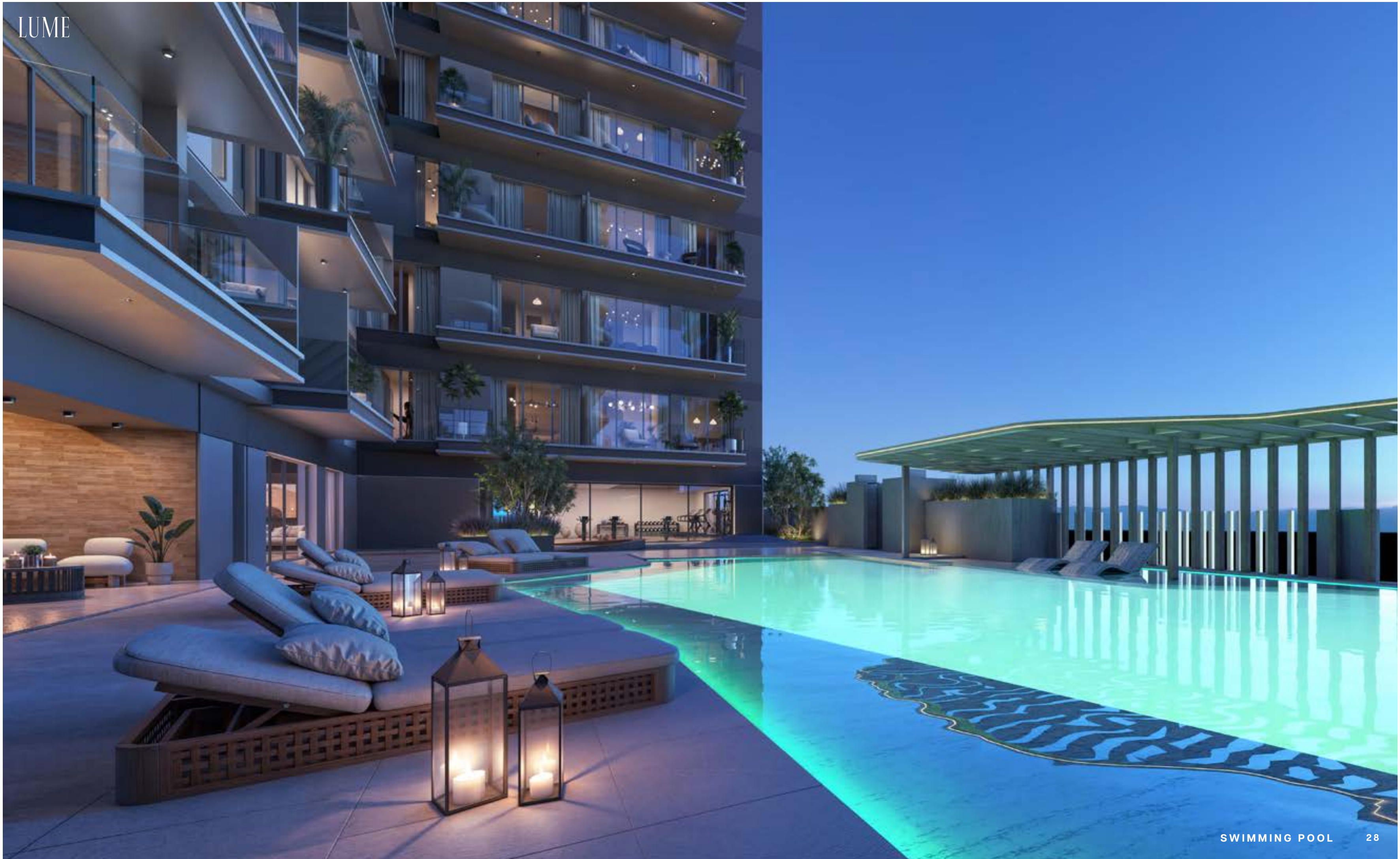
Dive into relaxation at our sparkling pool, the perfect retreat to unwind after a busy day or rejuvenate on weekends. Surrounded by a shaded pool deck and lounge seating, it is ideal for both socializing and soaking in the stunning views. For outdoor enthusiasts, the fitness area offers the perfect space for yoga, pilates, and mindful movement, while the indoor gym

caters to all fitness levels with top-tier equipment to inspire an active, healthy lifestyle. For those seeking a bit of friendly competition, the rooftop padel court offers an invigorating way to stay active while enjoying breathtaking views. Whether you are swimming, relaxing, working out, or rallying, each space offers a perfect balance of rejuvenation and vitality.











FIND YOUR GLOW

The Club House is the ideal space for connection, celebration, and socialization. With its inviting atmosphere and versatile design, it offers the perfect setting for everything, from casual meetups and lively events to hosting guests. Thoughtfully designed outdoor spaces provide plenty of room for social interaction, where young ones can explore and play freely while adults enjoy meaningful conversations. For nature lovers, the communal garden and BBQ area create a welcoming environment to relax, grill, and connect with neighbors – all while embracing the sunny Dubai weather.



RECHARGE YOUR DAY

Our leisure deck offers the perfect escape, hosting a variety of outdoor seating experiences designed for peace and relaxation. With lounge seating, sun beds, and hammock seating surrounded by greenery, it provides an ideal setting for reading, meditating, or simply unwinding. Bathed in natural light, the serene atmosphere invites you to disconnect and recharge. The artistic visuals add to the soothing ambiance, while the communal garden enhances the sense of tranquility, making every moment on the deck a rejuvenating experience.

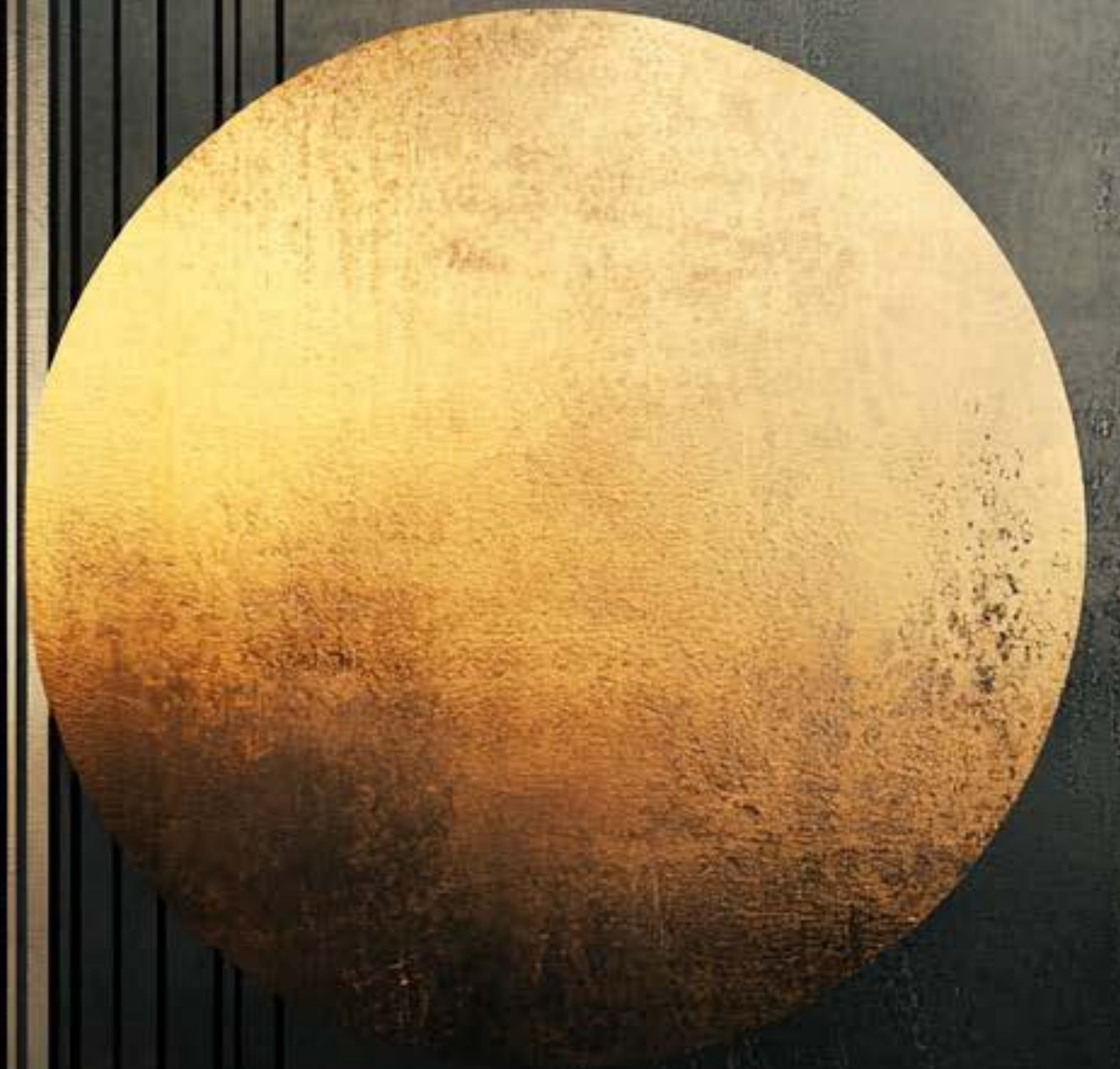




FLOOR PLANS

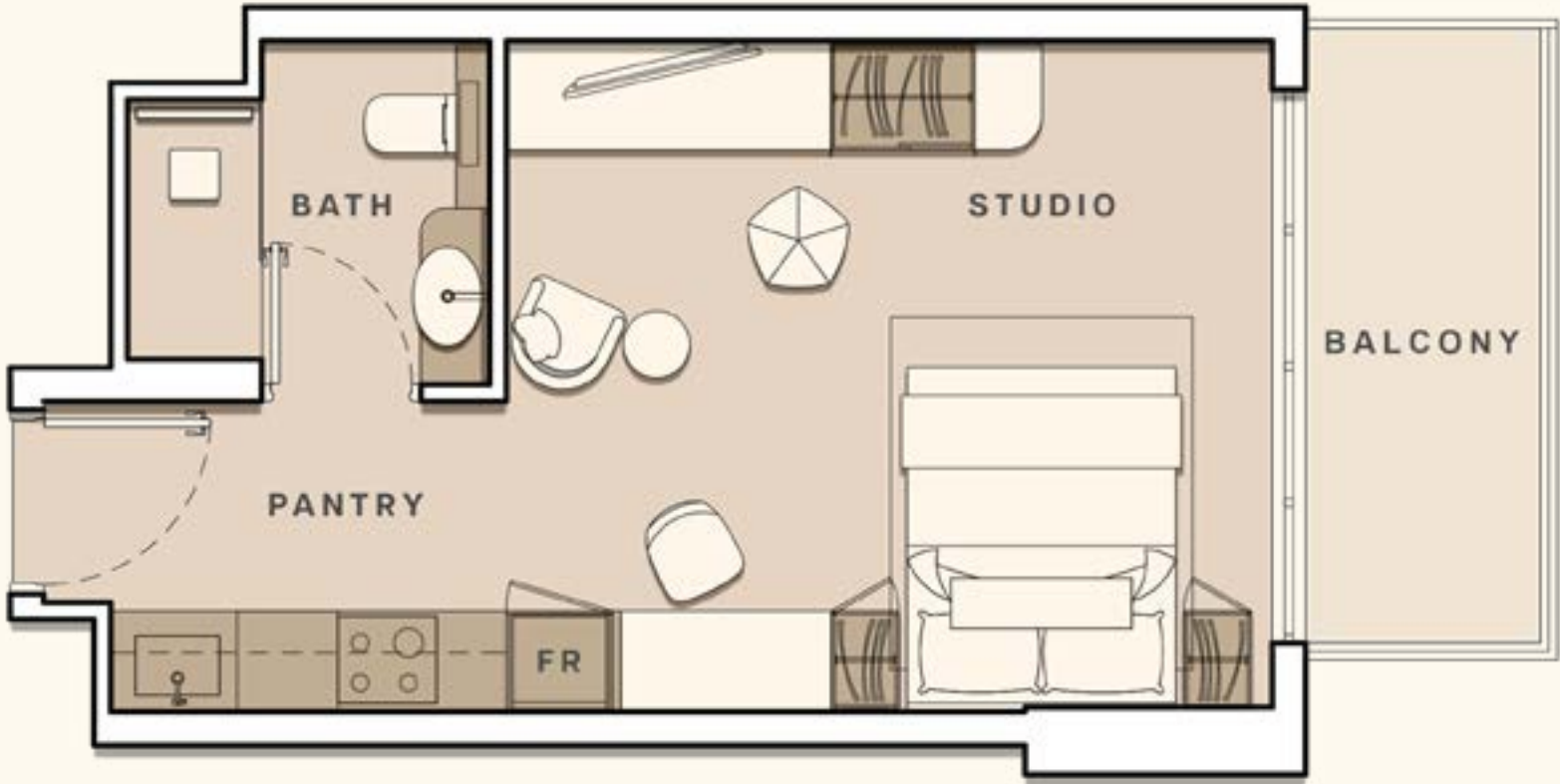
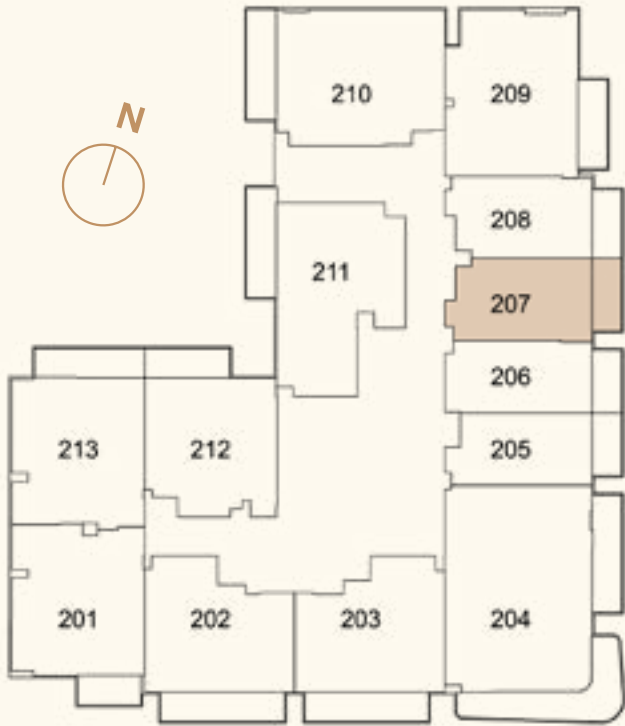
YOUR BEAMING SPACE

From smartly laid out, light-filled studios that optimize space and blend functionality with style, to airy one-bedroom apartments that provide a serene escape with generous living areas, and expansive two-bedrooms designed for young families with ample room for growth. Each apartment is purposefully crafted with open layouts that create a sense of flow and connection between spaces. Large windows and well-placed balconies bring the outdoors in, while clever storage solutions ensure every square meter is utilized to its fullest potential.



STUDIO APARTMENT A

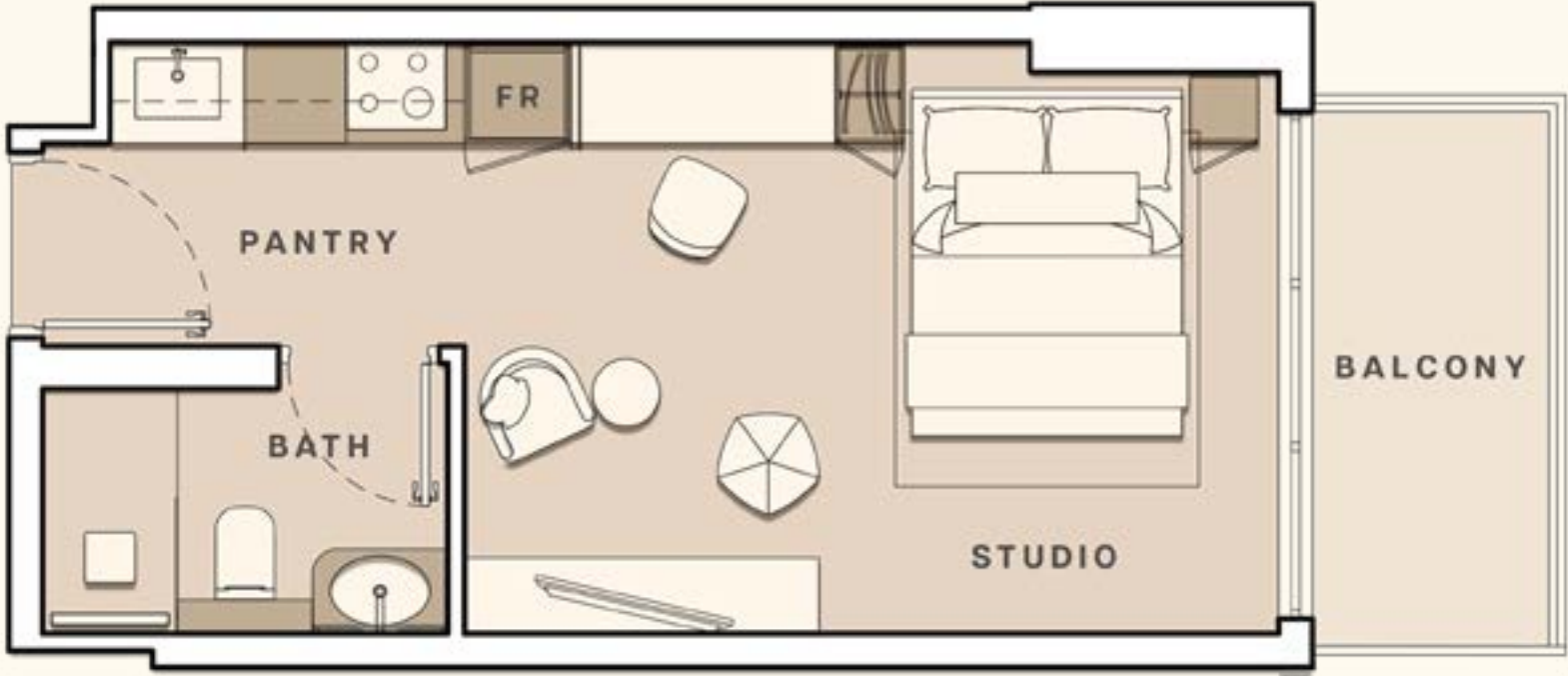
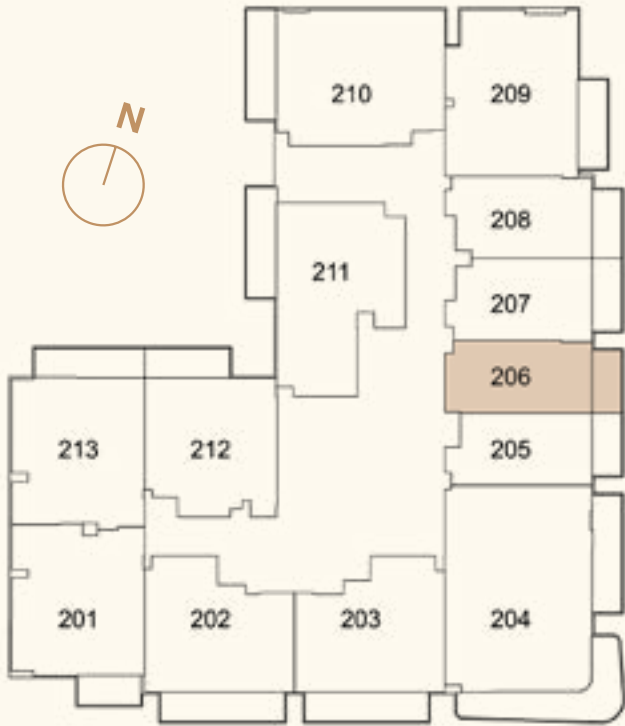
● TOTAL AREA	382.98 SQ FT
● UNIT AREA	321.95 SQ FT
● BALCONY AREA	61.03 SQ FT



1. All dimensions are in imperial and metric, and measured to structural elements and exclude wall finishes and construction tolerances. 2. All materials, dimensions, and drawings are approximate only. 3. Information is subject to change without notice at developer's absolute discretion. 4. Actual area may vary from the stated area. 5. Drawings not to scale. 6. All images used are for illustrative purposes only and do not represent the actual size, features, specifications, fittings, and furnishings. 7. The developer reserves the right to make revisions / alterations, at its absolute discretion, without any liability whatsoever.

STUDIO APARTMENT B

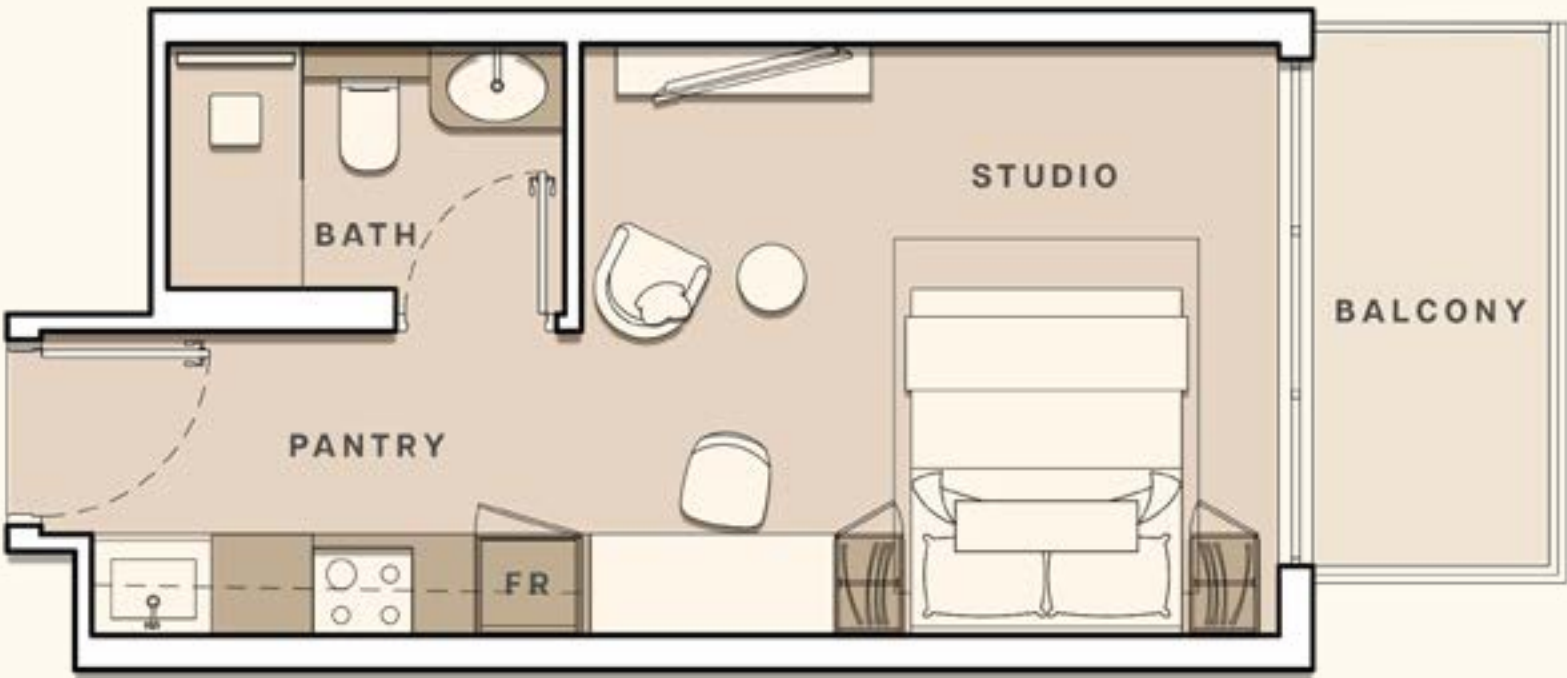
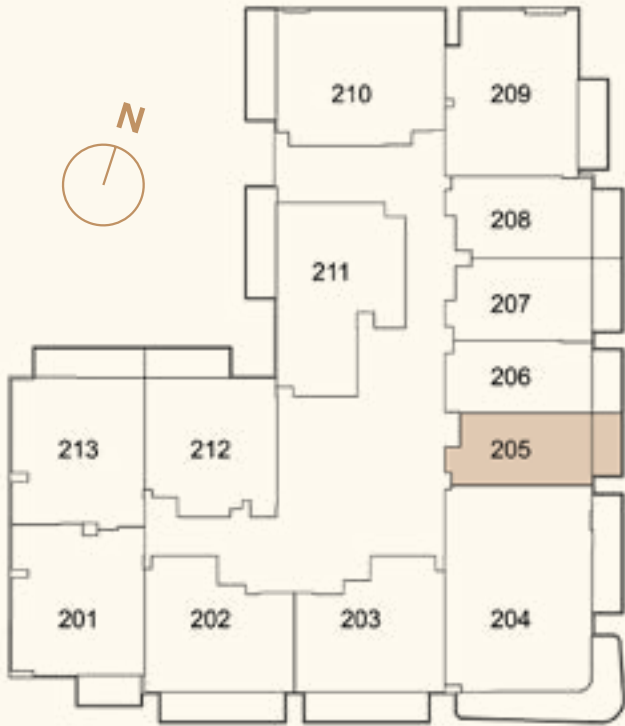
● TOTAL AREA	347.57 SQ FT
● UNIT AREA	294.82 SQ FT
● BALCONY AREA	52.74 SQ FT



1. All dimensions are in imperial and metric, and measured to structural elements and exclude wall finishes and construction tolerances. 2. All materials, dimensions, and drawings are approximate only. 3. Information is subject to change without notice at developer's absolute discretion. 4. Actual area may vary from the stated area. 5. Drawings not to scale. 6. All images used are for illustrative purposes only and do not represent the actual size, features, specifications, fittings, and furnishings. 7. The developer reserves the right to make revisions / alterations, at its absolute discretion, without any liability whatsoever.

STUDIO APARTMENT C

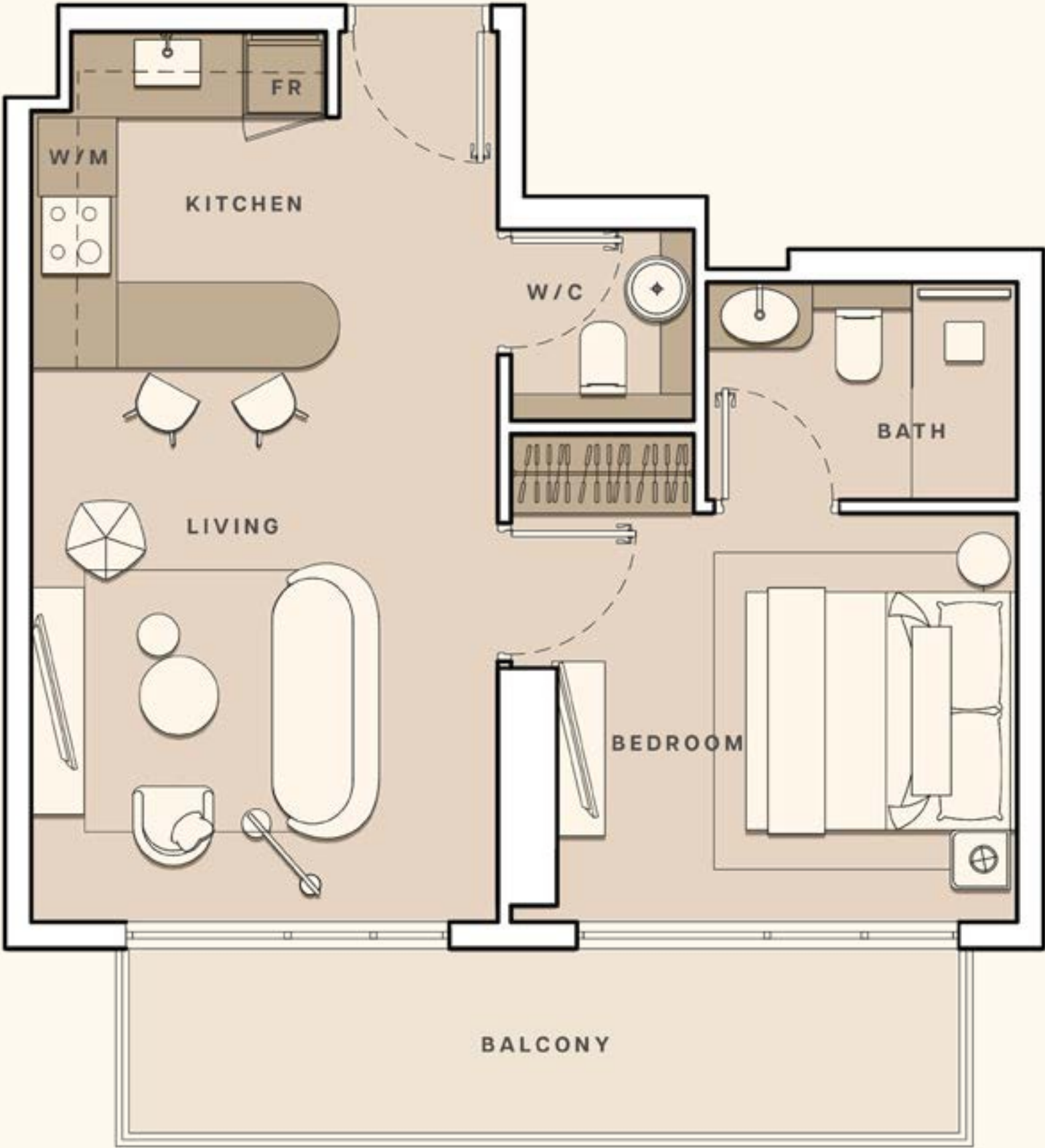
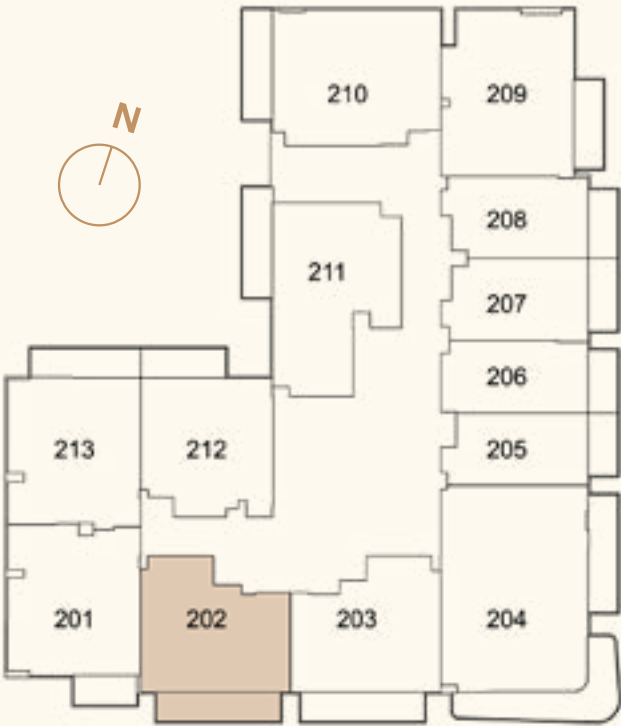
● TOTAL AREA	335.08 SQ FT
● UNIT AREA	282.34 SQ FT
● BALCONY AREA	52.74 SQ FT



1. All dimensions are in imperial and metric, and measured to structural elements and exclude wall finishes and construction tolerances. 2. All materials, dimensions, and drawings are approximate only. 3. Information is subject to change without notice at developer's absolute discretion. 4. Actual area may vary from the stated area. 5. Drawings not to scale. 6. All images used are for illustrative purposes only and do not represent the actual size, features, specifications, fittings, and furnishings. 7. The developer reserves the right to make revisions / alterations, at its absolute discretion, without any liability whatsoever.

ONE BED APARTMENT A

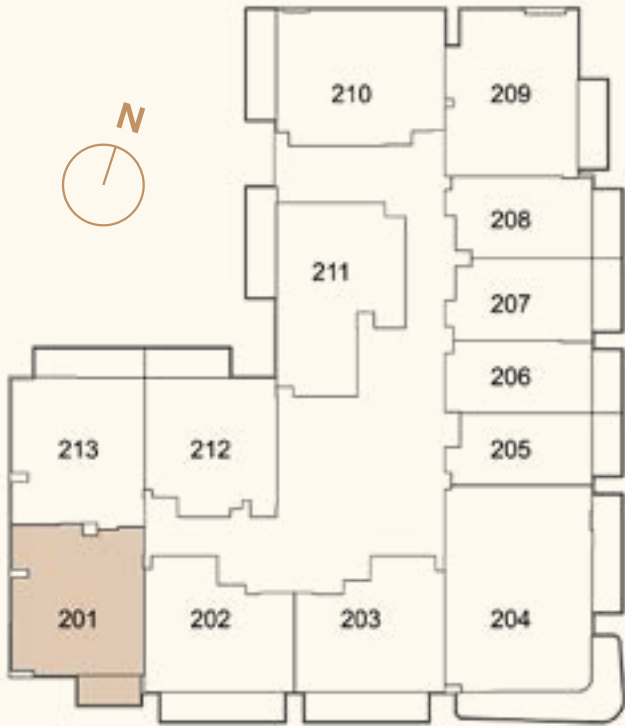
● TOTAL AREA	601.70 SQ FT
● UNIT AREA	497.51 SQ FT
● BALCONY AREA	104.19 SQ FT



1. All dimensions are in imperial and metric, and measured to structural elements and exclude wall finishes and construction tolerances. 2. All materials, dimensions, and drawings are approximate only. 3. Information is subject to change without notice at developer's absolute discretion. 4. Actual area may vary from the stated area. 5. Drawings not to scale. 6. All images used are for illustrative purposes only and do not represent the actual size, features, specifications, fittings, and furnishings. 7. The developer reserves the right to make revisions / alterations, at its absolute discretion, without any liability whatsoever.

ONE BED APARTMENT B

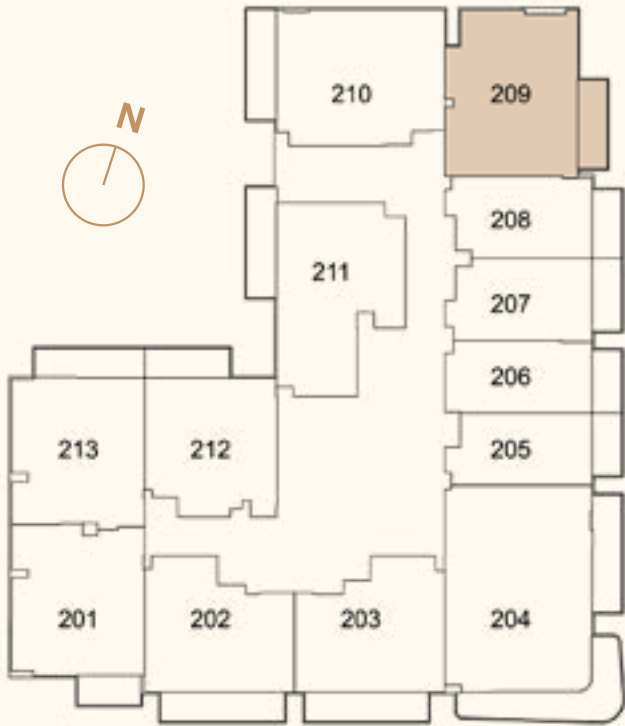
TOTAL AREA	603.42 SQ FT
UNIT AREA	550.04 SQ FT
BALCONY AREA	53.39 SQ FT



1. All dimensions are in imperial and metric, and measured to structural elements and exclude wall finishes and construction tolerances. 2. All materials, dimensions, and drawings are approximate only. 3. Information is subject to change without notice at developer's absolute discretion. 4. Actual area may vary from the stated area. 5. Drawings not to scale. 6. All images used are for illustrative purposes only and do not represent the actual size, features, specifications, fittings, and furnishings. 7. The developer reserves the right to make revisions / alterations, at its absolute discretion, without any liability whatsoever.

ONE BED APARTMENT C

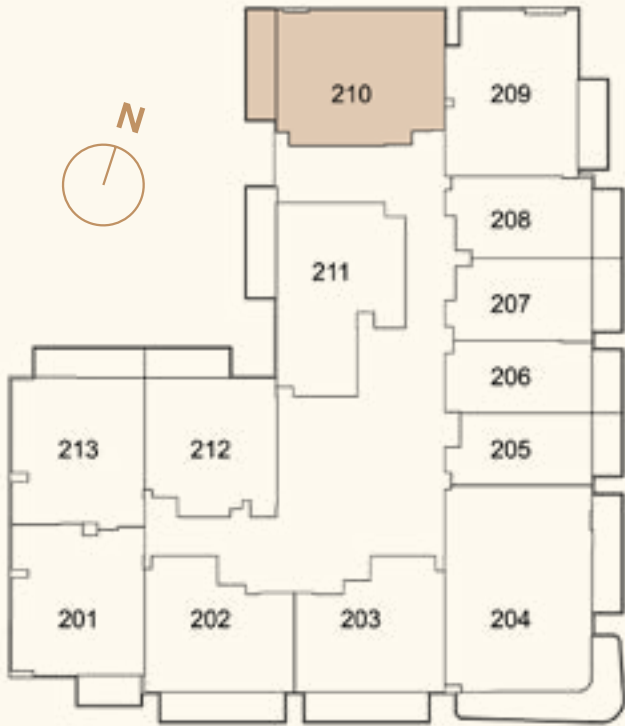
TOTAL AREA	676.51 SQ FT
UNIT AREA	601.81 SQ FT
BALCONY AREA	74.70 SQ FT



1. All dimensions are in imperial and metric, and measured to structural elements and exclude wall finishes and construction tolerances. 2. All materials, dimensions, and drawings are approximate only. 3. Information is subject to change without notice at developer's absolute discretion. 4. Actual area may vary from the stated area. 5. Drawings not to scale. 6. All images used are for illustrative purposes only and do not represent the actual size, features, specifications, fittings, and furnishings. 7. The developer reserves the right to make revisions / alterations, at its absolute discretion, without any liability whatsoever.

ONE BED APARTMENT D

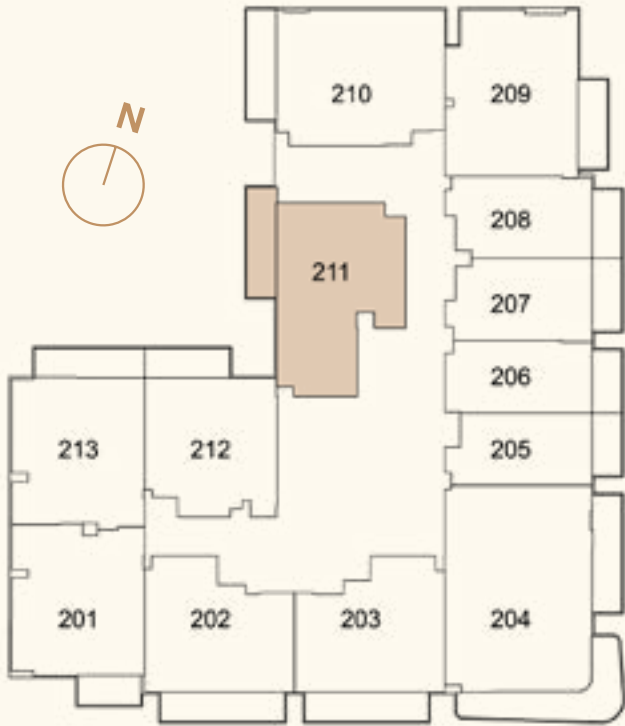
TOTAL AREA	715.15 SQ FT
UNIT AREA	622.37 SQ FT
BALCONY AREA	92.78 SQ FT



1. All dimensions are in imperial and metric, and measured to structural elements and exclude wall finishes and construction tolerances. 2. All materials, dimensions, and drawings are approximate only. 3. Information is subject to change without notice at developer's absolute discretion. 4. Actual area may vary from the stated area. 5. Drawings not to scale. 6. All images used are for illustrative purposes only and do not represent the actual size, features, specifications, fittings, and furnishings. 7. The developer reserves the right to make revisions / alterations, at its absolute discretion, without any liability whatsoever.

ONE BED APARTMENT E

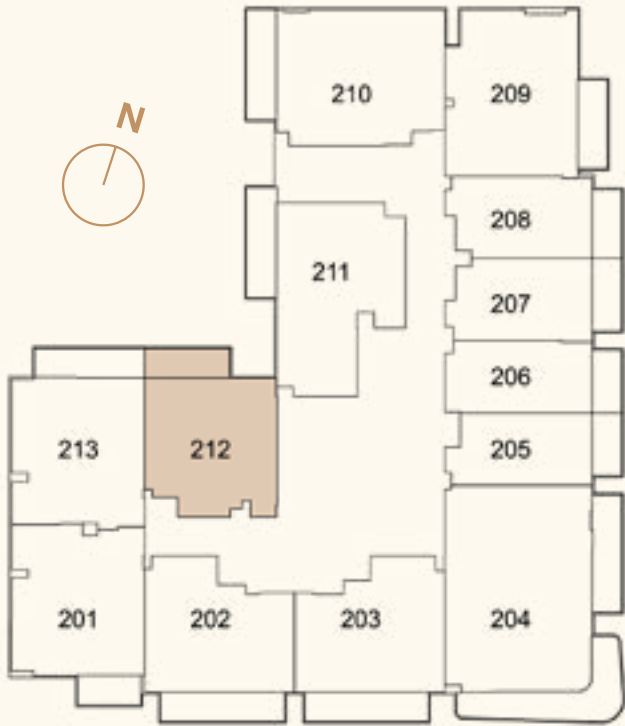
TOTAL AREA	685.12 SQ FT
UNIT AREA	591.91 SQ FT
BALCONY AREA	93.22 SQ FT



1. All dimensions are in imperial and metric, and measured to structural elements and exclude wall finishes and construction tolerances. 2. All materials, dimensions, and drawings are approximate only. 3. Information is subject to change without notice at developer's absolute discretion. 4. Actual area may vary from the stated area. 5. Drawings not to scale. 6. All images used are for illustrative purposes only and do not represent the actual size, features, specifications, fittings, and furnishings. 7. The developer reserves the right to make revisions / alterations, at its absolute discretion, without any liability whatsoever.

ONE BED APARTMENT F

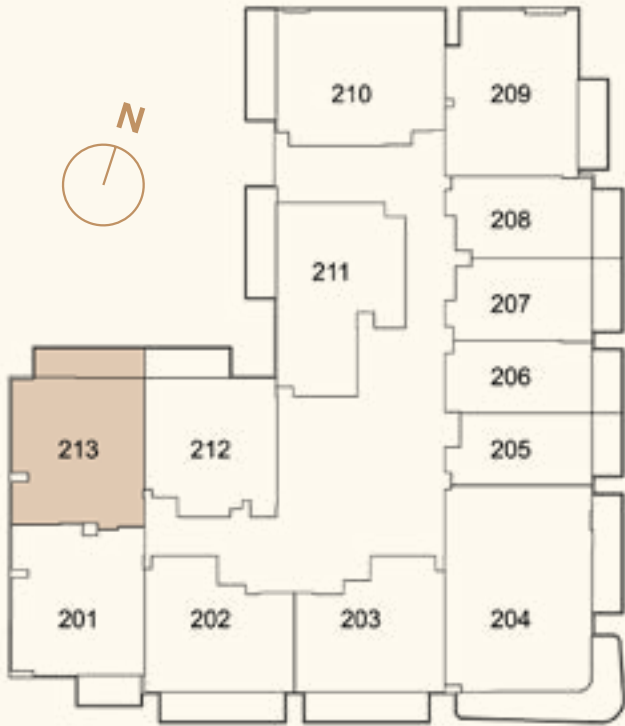
TOTAL AREA	563.38 SQ FT
UNIT AREA	491.70 SQ FT
BALCONY AREA	71.69 SQ FT



1. All dimensions are in imperial and metric, and measured to structural elements and exclude wall finishes and construction tolerances. 2. All materials, dimensions, and drawings are approximate only. 3. Information is subject to change without notice at developer's absolute discretion. 4. Actual area may vary from the stated area. 5. Drawings not to scale. 6. All images used are for illustrative purposes only and do not represent the actual size, features, specifications, fittings, and furnishings. 7. The developer reserves the right to make revisions / alterations, at its absolute discretion, without any liability whatsoever.

ONE BED APARTMENT G

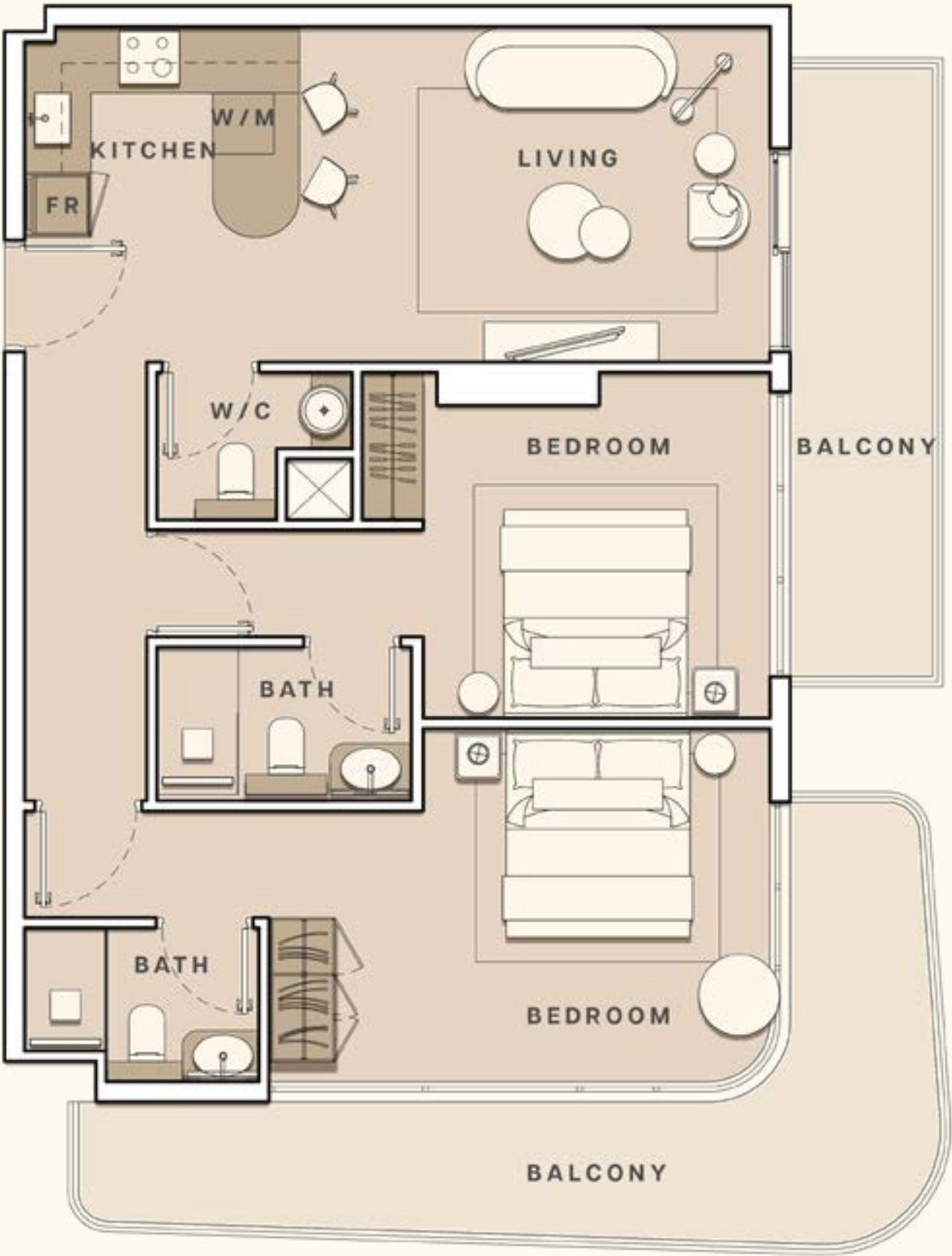
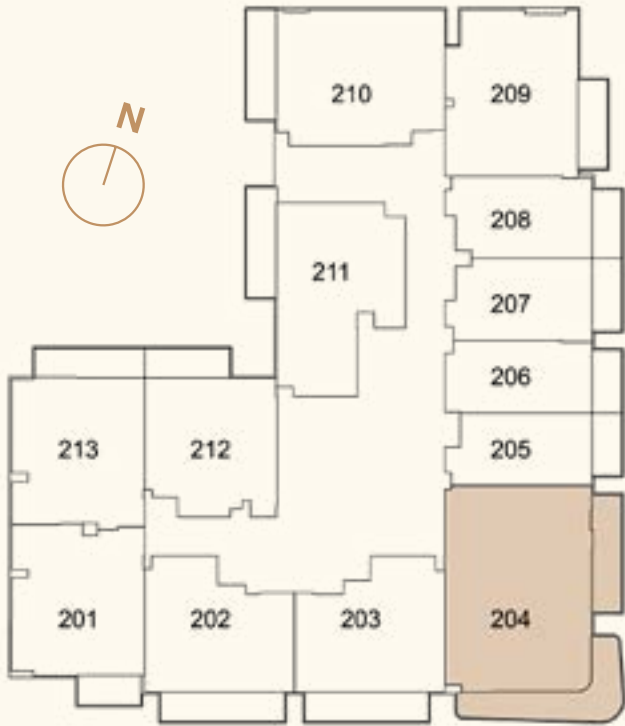
TOTAL AREA	639.16 SQ FT
UNIT AREA	547.88 SQ FT
BALCONY AREA	91.28 SQ FT



1. All dimensions are in imperial and metric, and measured to structural elements and exclude wall finishes and construction tolerances. 2. All materials, dimensions, and drawings are approximate only. 3. Information is subject to change without notice at developer's absolute discretion. 4. Actual area may vary from the stated area. 5. Drawings not to scale. 6. All images used are for illustrative purposes only and do not represent the actual size, features, specifications, fittings, and furnishings. 7. The developer reserves the right to make revisions / alterations, at its absolute discretion, without any liability whatsoever.

TWO BED APARTMENT A

TOTAL AREA	1,118.37 SQ FT
UNIT AREA	843.57 SQ FT
BALCONY AREA	274.80 SQ FT



1. All dimensions are in imperial and metric, and measured to structural elements and exclude wall finishes and construction tolerances. 2. All materials, dimensions, and drawings are approximate only. 3. Information is subject to change without notice at developer's absolute discretion. 4. Actual area may vary from the stated area. 5. Drawings not to scale. 6. All images used are for illustrative purposes only and do not represent the actual size, features, specifications, fittings, and furnishings. 7. The developer reserves the right to make revisions / alterations, at its absolute discretion, without any liability whatsoever.

LUME

S&S DEVELOPMENTS

S&S Developments is an exceptional property developer exuding dedication to profound philosophical principles, firmly anchored on the ideology that the living environment has an extraordinary influence on the quality of life. Our steadfast commitment to preserving and enhancing residents' lifestyles sets us apart. Renowned for our visionary approach, S&S Developments meticulously crafts extraordinary developments like The White Palace, Meydan Residences, and Townhouses. These awe-inspiring projects embody exemplary design principles that protect and elevate lifestyles.

EVOLUTIONS

Evolutions is the first-of-its-kind real estate intelligence hub in Dubai that combines a concept store of exclusive developments, a 360-degree consultancy that specializes in the entire real estate lifecycle, and a global network of industry experts to facilitate connections with major industry players. The company serves as a bridge connecting all stakeholders, including developers, investors, brokers, and end-users. It actively supports the interests of every stakeholder, working towards creating, developing, and delivering valuable assets.

DEVELOPED BY

S&S
Developments

PRESENTED BY

EVOLUTIONS

800 EVOL (3865)
INFO@EVOLUTIONS.AE