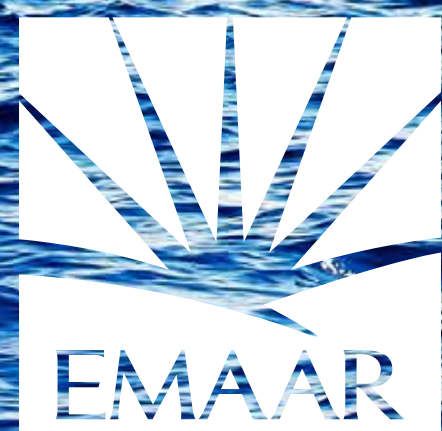


VIDA

RESIDENCES
DUBAI MARINA





THE RIVIERA OF THE GULF

Set sail from the yacht club, shop your heart out at Dubai Marina Mall and enjoy world-class dining, entertainment, hotels, spas and recreation all just steps away.





A VIEW OF OCEANIC PROPORTIONS

Take in the stunning view of the Dubai Marina as you've never seen it before.

AN OPPORTUNITY OF A LIFETIME

Enjoy exquisite service and the VIDA hotel luxury life style in addition to culinary experiences with a range of dining outlets, discover the area's nautical heritage with the Yacht Community.

VIDA
DUBAI MARINA



BALANCE AT THE HEIGHT OF LUXURY

Immerse yourself in lush surroundings and
discover a lifestyle of harmony with your
environment.



RIVIERA-STYLE LIVING

Immerses in vibrant colors, stylish design and cosmopolitan crowds, surrounded by white sandy beaches and the city's best dining, entertainment and leisure.



A NAUTICAL VISION

A stunning architecture allows light to pass through, giving the residence depth and character. The timber paneling of the walls highlights the nautical history.





SOAK UP LIFE
IN THE SUN

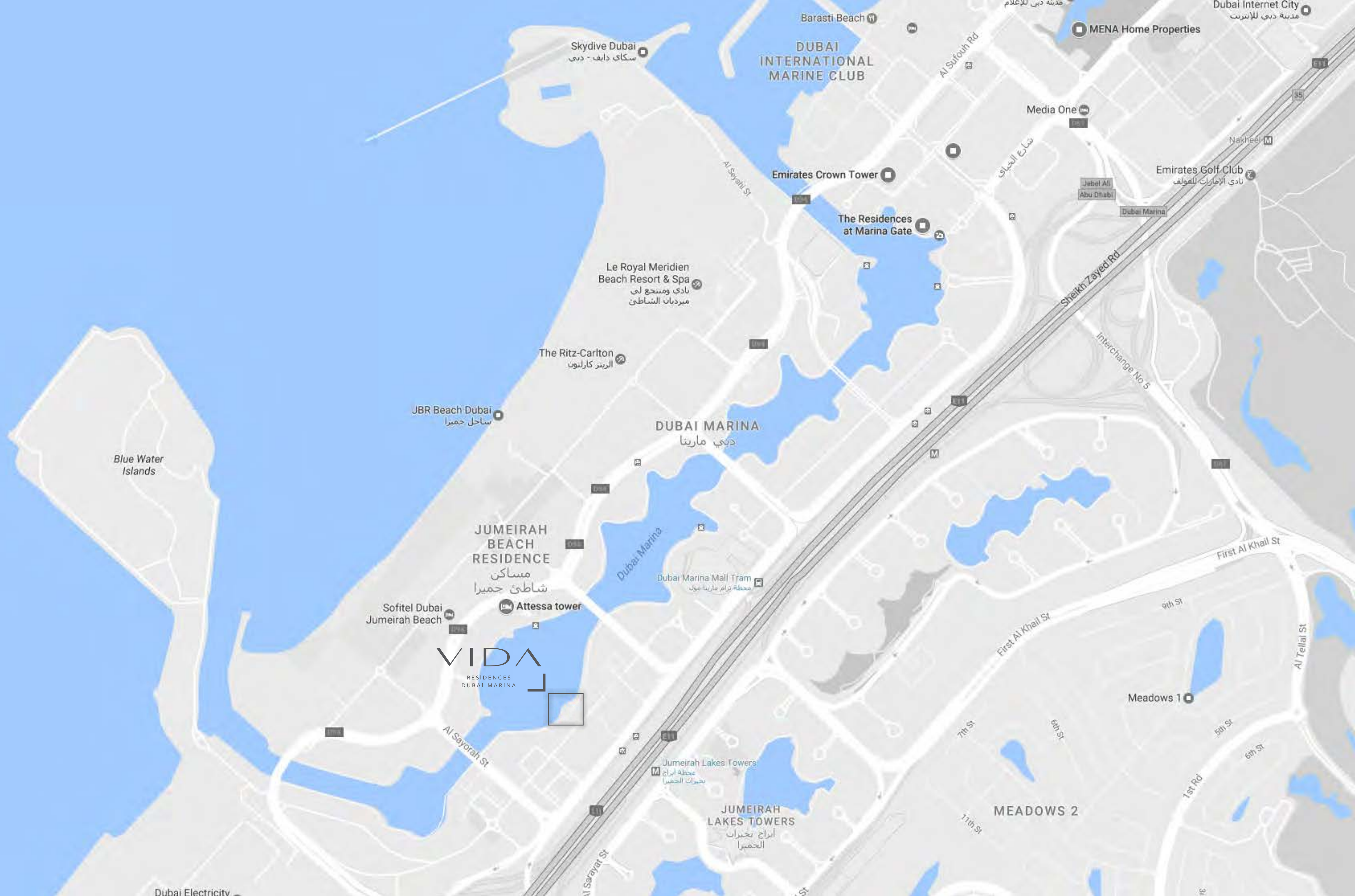
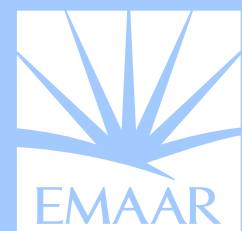




DA
NO RESORTS



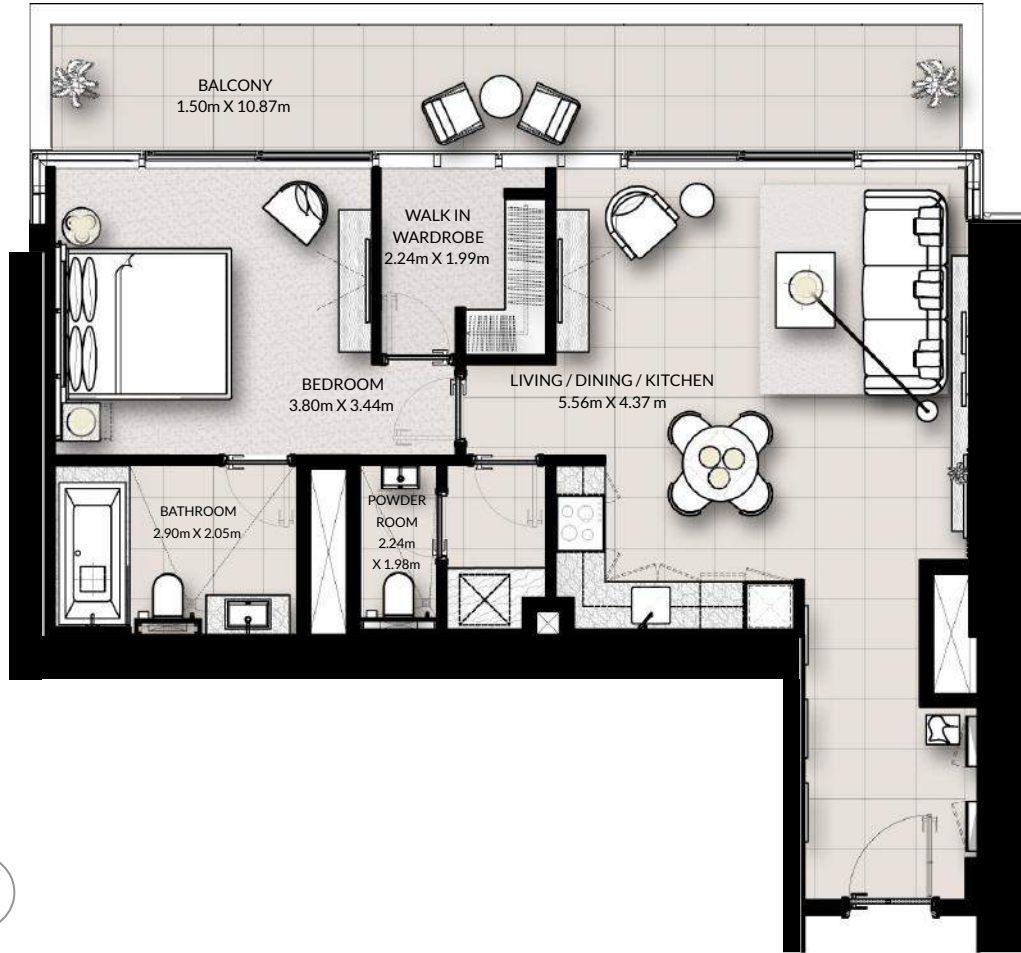




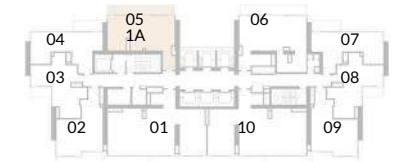
VIDA

RESIDENCES
DUBAI MARINA

FLOORPLANS
1 BED ROOM



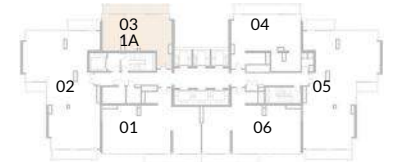
1 Bedroom Type A



FLOOR 14 - 24



FLOOR 26 - 48



FLOOR 49 - 54

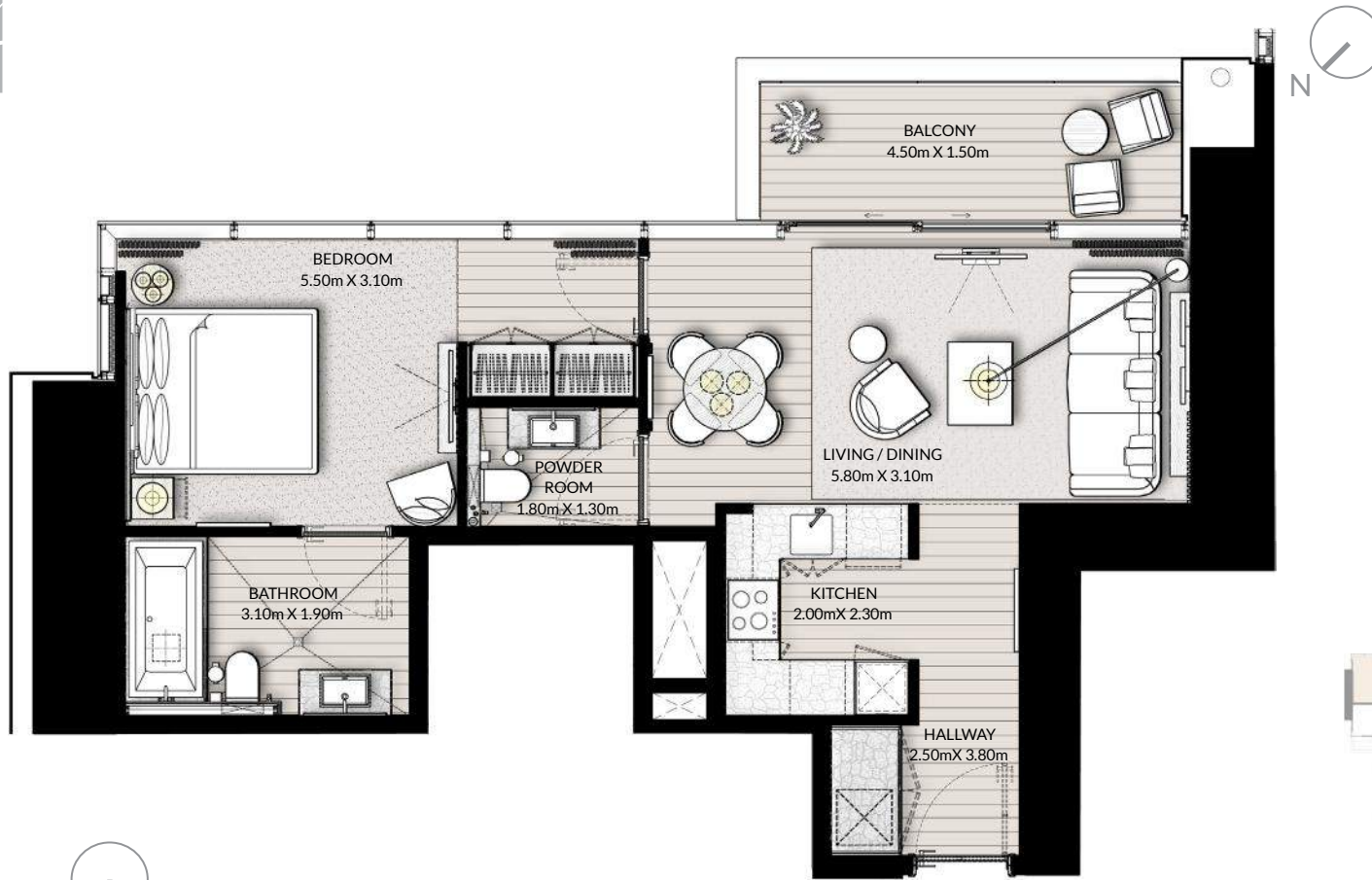


MARINA VIEW

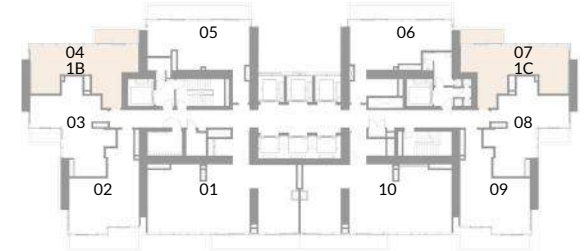
Floor	14-19	20-24	26-30	31-41	43-48	49-54
Unit Area	820.10 ft ² / 76.19 m ²	821.82 ft ² / 76.35 m ²	827.31 ft ² / 76.86 m ²	827.64 ft ² / 76.89 m ²	837.54 ft ² / 77.81 m ²	838.51 ft ² / 77.90 m ²
Balcony Area	178.79 ft ² / 16.61 m ²	178.79 ft ² / 16.61 m ²	178.68 ft ² / 16.60 m ²	178.68 ft ² / 16.60 m ²	178.68 ft ² / 16.60 m ²	178.79 ft ² / 16.61 m ²
Total Area	998.89 ft ² / 92.80 m ²	1000.61 ft ² / 92.96 m ²	1005.99 ft ² / 93.46 m ²	1006.32 ft ² / 93.49 m ²	1016.22 ft ² / 94.41 m ²	1017.30 ft ² / 94.51 m ²

Floor	14 - 24	Unit 05
Floor	26 - 48	Unit 04
Floor	49 - 54	Unit 03

1. All dimensions are in imperial and metric, and measured to structural elements and exclude wall finishes and construction tolerances. 2. All materials, dimensions, and drawings are approximate only. 3. Information is subject to change without notice, at developer's absolute discretion. 4. Actual area may vary from the stated area. 5. Drawings not to scale. 6. All images used are for illustrative purposes only and do not represent the actual size, features, specifications, fittings, and furnishings. 7. The developer reserves the right to make revisions/alterations, at its absolute discretion, without any liability whatsoever.



1 Bedroom Type B & C



MARINA VIEW

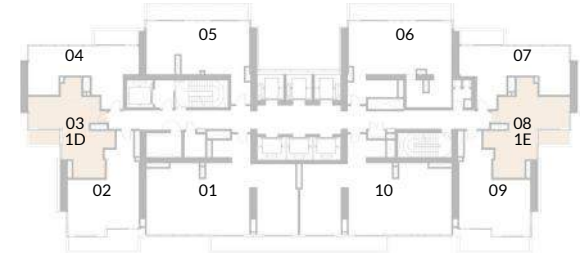
Floor	14-19	20-24
Unit Area	670.16 ft ² / 62.26m ²	677.70 ft ² / 62.96 m ²
Balcony Area	76.32 ft ² / 7.09 m ²	75.56 ft ² / 7.02 m ²
Total Area	746.48 ft ² / 69.35 m ²	753.26 ft ² / 69.98 m ²

Floor 14 - 24 Unit 04 & 07

1. All dimensions are in imperial and metric, and measured to structural elements and exclude wall finishes and construction tolerances. 2. All materials, dimensions, and drawings are approximate only. 3. Information is subject to change without notice, at developer's absolute discretion. 4. Actual area may vary from the stated area. 5. Drawings not to scale. 6. All images used are for illustrative purposes only and do not represent the actual size, features, specifications, fittings, and furnishings. 7. The developer reserves the right to make revisions/ alterations, at its absolute discretion, without any liability whatsoever.



1 Bedroom Type D & E



MARINA VIEW

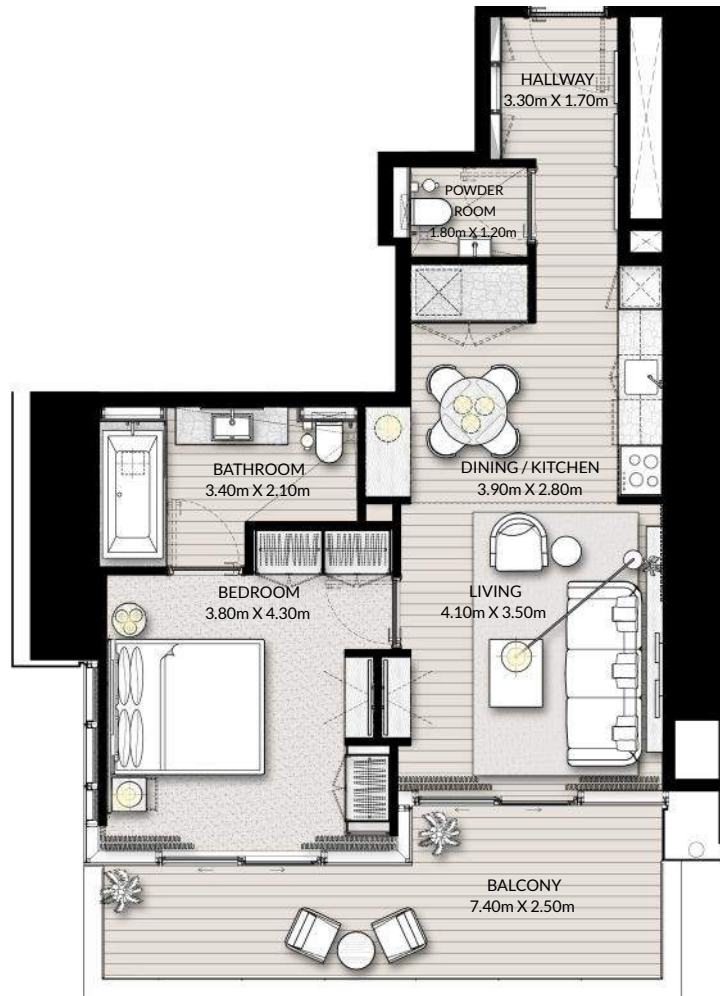
Floor	14-19	20-24
Unit Area	630.77 ft ² / 58.60 m ²	637.01 ft ² / 59.18 m ²
Balcony Area	53.71 ft ² / 4.99 m ²	53.71 ft ² / 4.99 m ²
Total Area	684.48 ft ² / 63.59 m ²	690.72 ft ² / 64.17 m ²

Floor 14 - 24 Unit 03 & 08

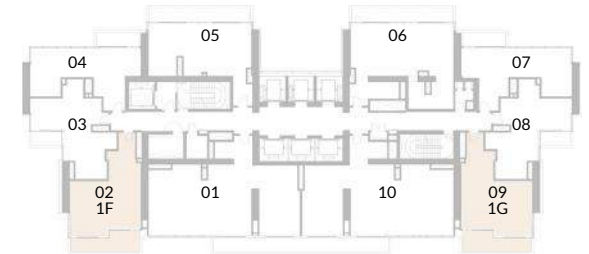
1. All dimensions are in imperial and metric, and measured to structural elements and exclude wall finishes and construction tolerances. 2. All materials, dimensions, and drawings are approximate only. 3. Information is subject to change without notice, at developer's absolute discretion. 4. Actual area may vary from the stated area. 5. Drawings not to scale. 6. All images used are for illustrative purposes only and do not represent the actual size, features, specifications, fittings, and furnishings. 7. The developer reserves the right to make revisions/alterations, at its absolute discretion, without any liability whatsoever.



1 Bedroom Type F & G



MARINA VIEW

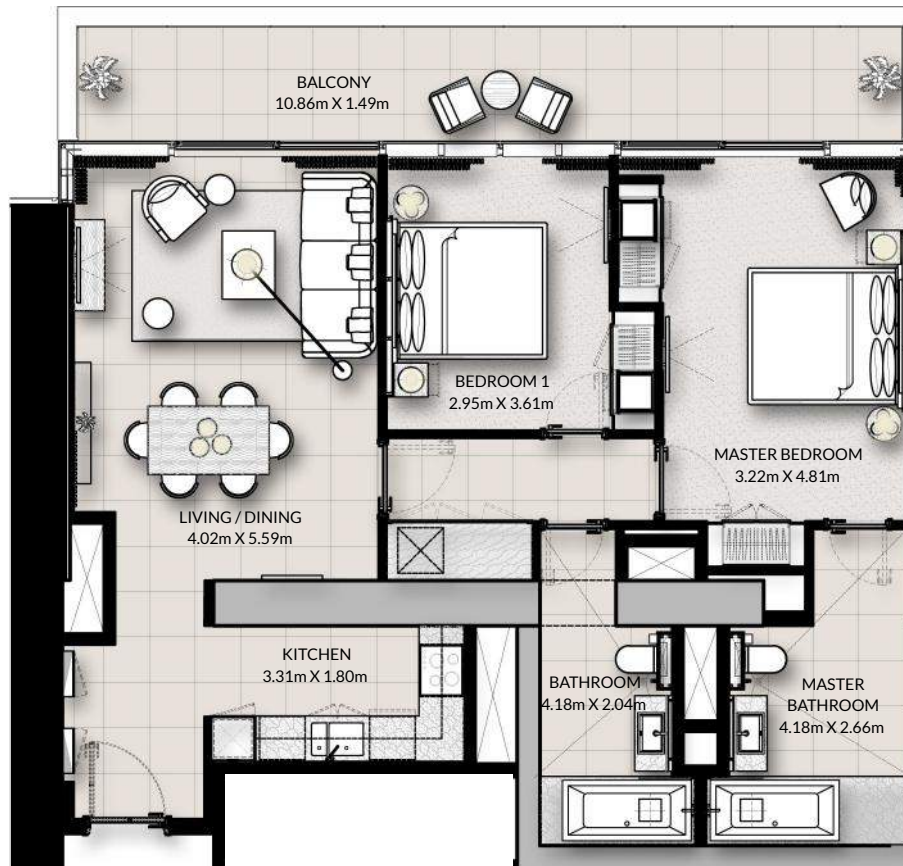


Floor	14-19	20-24
Unit Area	682.32 ft ² / 63.39m ²	697.61 ft ² / 64.81m ²
Balcony Area	150.80 ft ² / 14.01 m ²	150.80 ft ² / 14.01m ²
Total Area	833.12 ft ² / 77.40 m ²	848.41 ft ² / 78.82 m ²

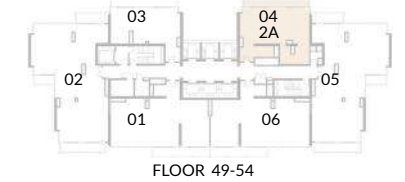
Floor 14 - 24 Unit 02 & 09

1. All dimensions are in imperial and metric, and measured to structural elements and exclude wall finishes and construction tolerances. 2. All materials, dimensions, and drawings are approximate only. 3. Information is subject to change without notice, at developer's absolute discretion. 4. Actual area may vary from the stated area. 5. Drawings not to scale. 6. All images used are for illustrative purposes only and do not represent the actual size, features, specifications, fittings, and furnishings. 7. The developer reserves the right to make revisions/alterations, at its absolute discretion, without any liability whatsoever.

FLOORPLANS
2 BED ROOM



2 Bedroom Type A



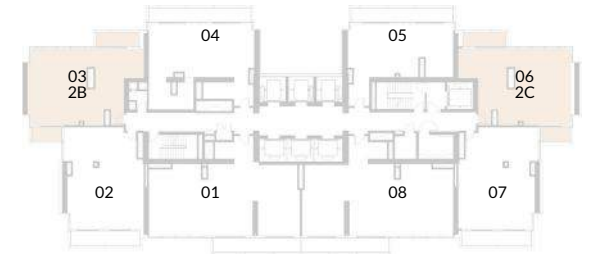
MARINA VIEW

Floor	14-19	20-24	26-30	31-41	43-48	49-54
Unit Area	1073.05 ft ² / 99.69 m ²	1076.61 ft ² / 100.02 m ²	1078.01 ft ² / 100.15 m ²	1076.61 ft ² / 100.02 m ²	1082.31 ft ² / 100.55 m ²	1083.50 ft ² / 100.66 m ²
Balcony Area	178.79 ft ² / 16.61 m ²	178.79 ft ² / 16.61 m ²	178.68 ft ² / 16.60 m ²	178.68 ft ² / 16.60 m ²	178.68 ft ² / 16.60 m ²	178.79 ft ² / 16.61 m ²
Total Area	1251.84 ft ² / 116.30 m ²	1255.40 ft ² / 116.63 m ²	1256.69 ft ² / 116.75 m ²	1255.29 ft ² / 116.62 m ²	1260.99 ft ² / 117.15 m ²	1262.29 ft ² / 117.27 m ²

Floor	14 - 24	Unit 06
Floor	26 - 48	Unit 05
Floor	49 - 54	Unit 04



2 Bedroom Type B & C



MARINA VIEW

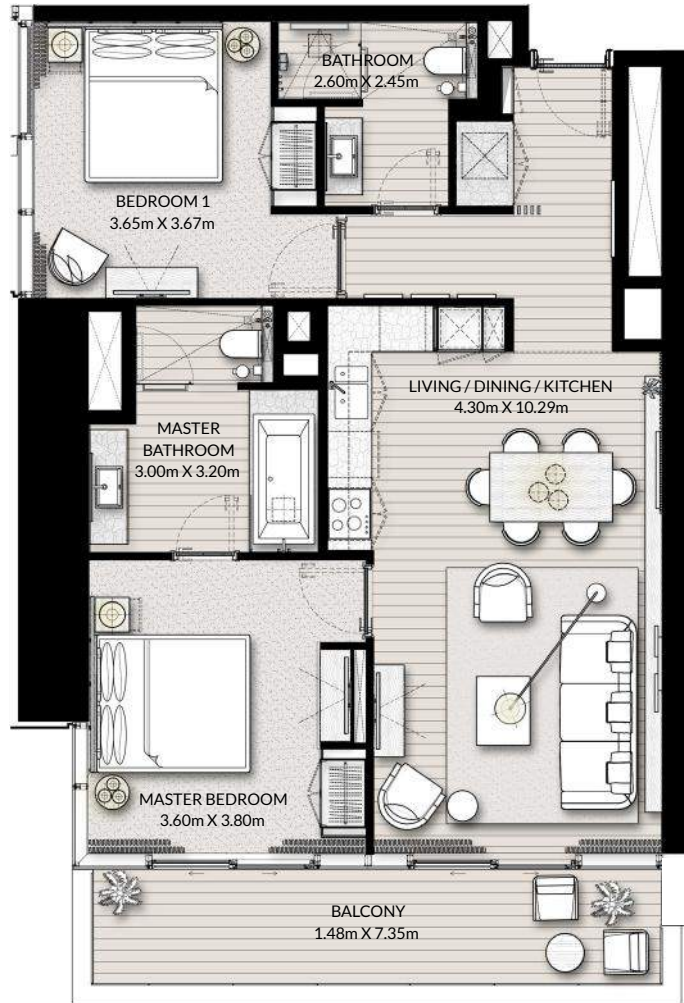
Floor	26-30	31-41	43-48
Unit Area	1023.86 ft ² / 95.12 m ²	1028.60 ft ² / 95.56 m ²	1034.73 ft ² / 96.13 m ²
Balcony Area	129.71 ft ² / 12.05 m ²	129.71 ft ² / 12.05 m ²	129.71 ft ² / 12.05 m ²
Total Area	1153.57 ft ² / 107.17 m ²	1158.31 ft ² / 107.61 m ²	1164.44 ft ² / 108.18 m ²

Floor	26-48	Unit 03 & 06
-------	-------	--------------

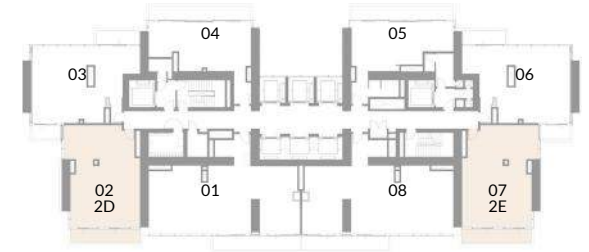
1. All dimensions are in imperial and metric, and measured to structural elements and exclude wall finishes and construction tolerances. 2. All materials, dimensions, and drawings are approximate only. 3. Information is subject to change without notice, at developer's absolute discretion. 4. Actual area may vary from the stated area. 5. Drawings not to scale. 6. All images used are for illustrative purposes only and do not represent the actual size, features, specifications, fittings, and furnishings. 7. The developer reserves the right to make revisions/alterations, at its absolute discretion, without any liability whatsoever.



2 Bedroom Type D & E



MARINA VIEW

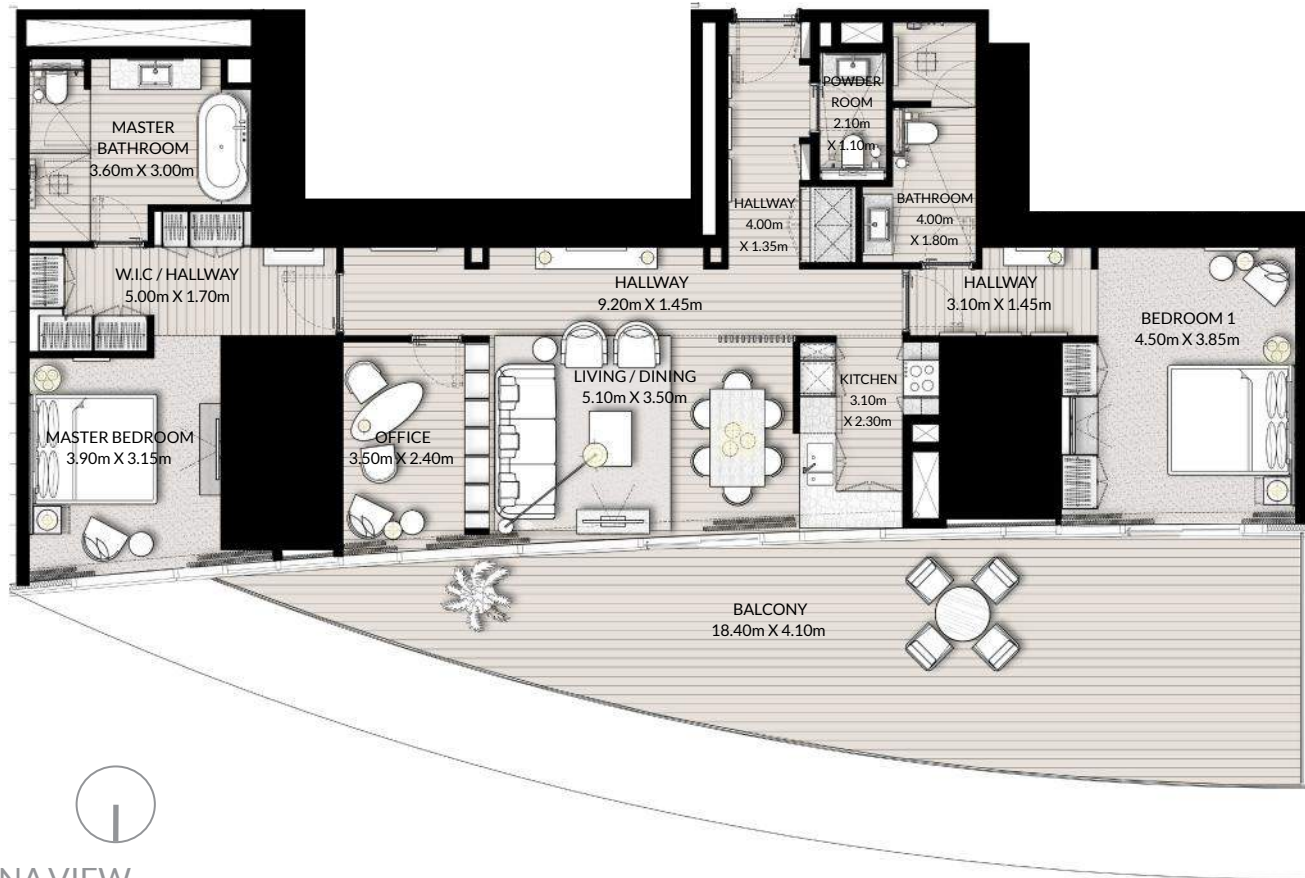


Floor	26-30	31-41	43-48
Unit Area	979.41 ft ² / 90.99 m ²	988.77 ft ² / 91.86 m ²	996.52 ft ² / 92.58 m ²
Balcony Area	122.06 ft ² / 11.34 m ²	122.06 ft ² / 11.34 m ²	122.06 ft ² / 11.34 m ²
Total Area	1101.47 ft ² / 102.33 m ²	1110.83 ft ² / 103.20 m ²	1118.58 ft ² / 103.92 m ²

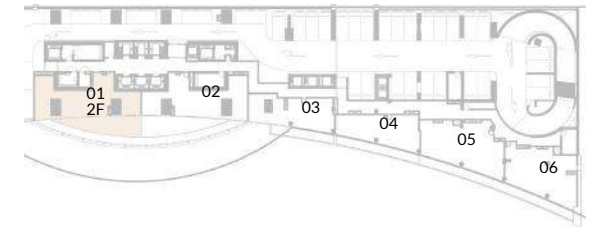
Floor 26 - 48 Unit 02 & 07



2 Bedroom Type F



MARINA VIEW



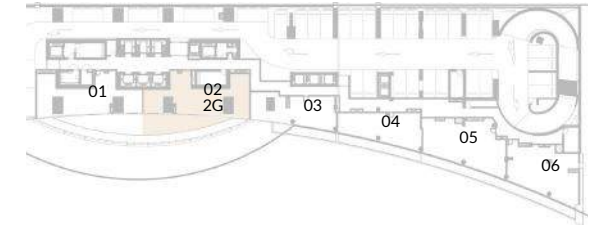
Floor	2
Unit Area	1513.51 ft ² / 140.61 m ²
Balcony Area	538.09 ft ² / 49.99 m ²
Total Area	2051.60 ft ² / 190.60 m ²

Floor	2	Unit 01
-------	---	---------

1. All dimensions are in imperial and metric, and measured to structural elements and exclude wall finishes and construction tolerances. 2. All materials, dimensions, and drawings are approximate only. 3. Information is subject to change without notice, at developer's absolute discretion. 4. Actual area may vary from the stated area. 5. Drawings not to scale. 6. All images used are for illustrative purposes only and do not represent the actual size, features, specifications, fittings, and furnishings. 7. The developer reserves the right to make revisions/alterations, at its absolute discretion, without any liability whatsoever.



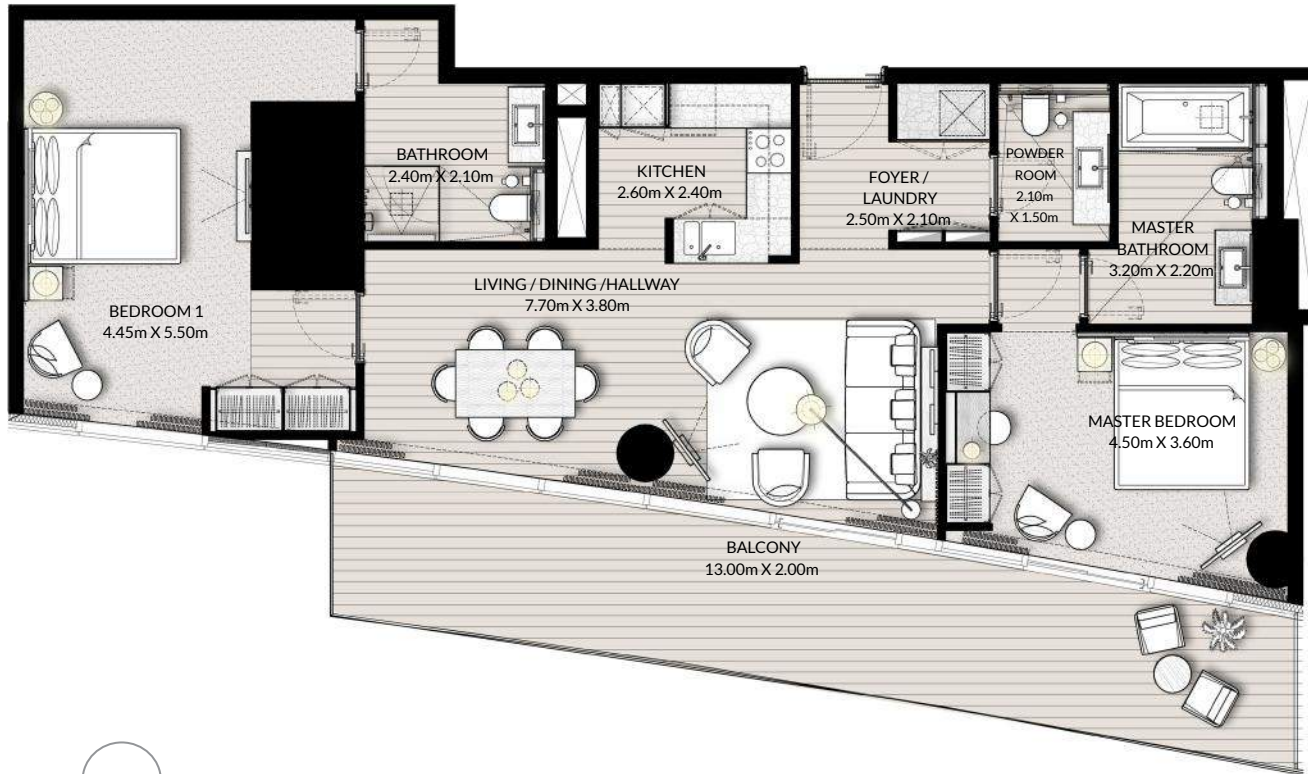
2 Bedroom Type G



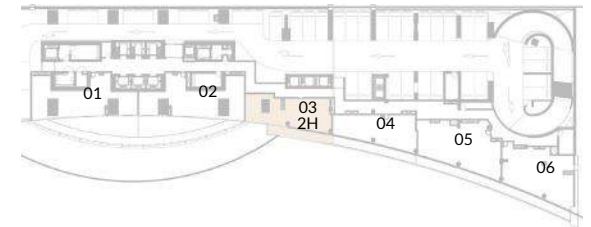
Floor	2
Unit Area	1536.55 ft ² / 142.75 m ²
Balcony Area	522.16 ft ² / 48.51 m ²
Total Area	2058.71 ft ² / 191.26 m ²

Floor	2	Unit 02
-------	---	---------

1. All dimensions are in imperial and metric, and measured to structural elements and exclude wall finishes and construction tolerances. 2. All materials, dimensions, and drawings are approximate only. 3. Information is subject to change without notice, at developer's absolute discretion. 4. Actual area may vary from the stated area. 5. Drawings not to scale. 6. All images used are for illustrative purposes only and do not represent the actual size, features, specifications, fittings, and furnishings. 7. The developer reserves the right to make revisions/alterations, at its absolute discretion, without any liability whatsoever.



2 Bedroom Type H



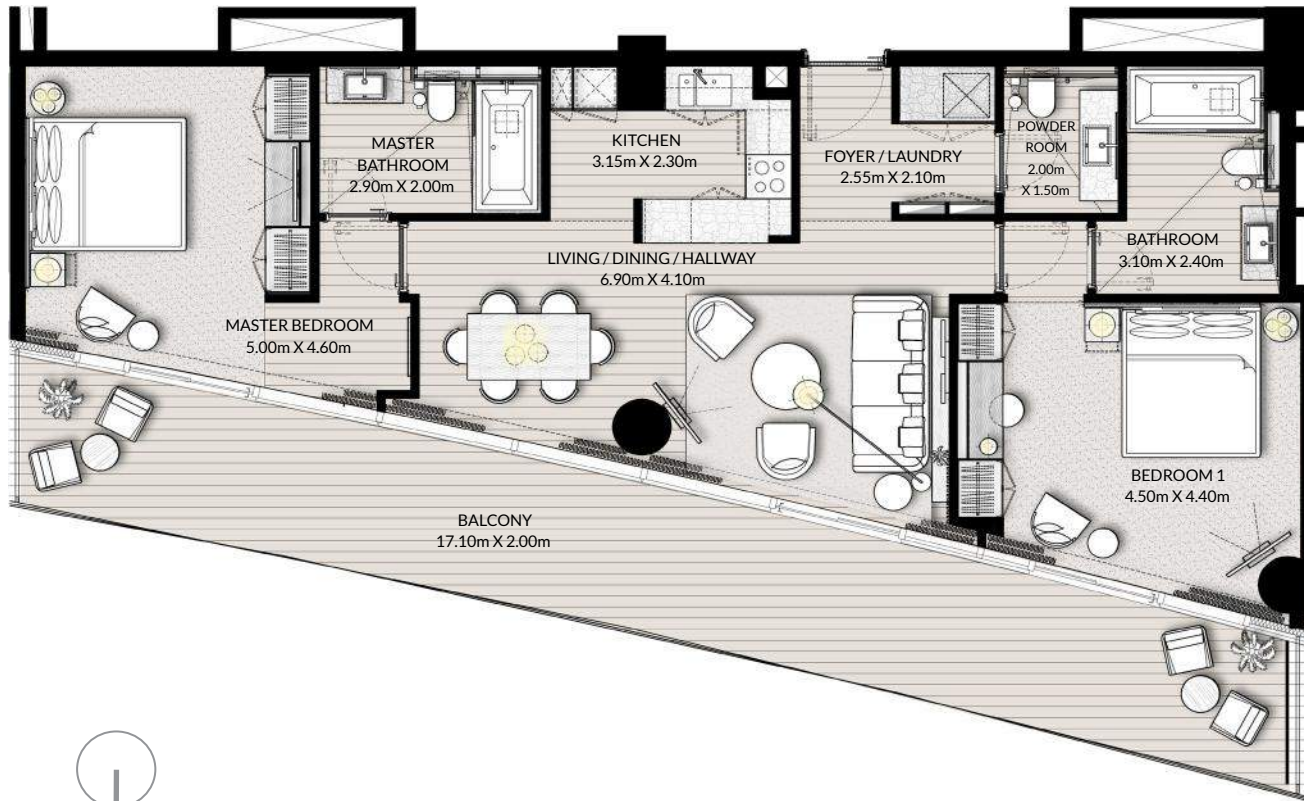
MARINA VIEW

Floor	2
Unit Area	1100.18 ft ² / 102.21 m ²
Balcony Area	240.25 ft ² / 22.32 m ²
Total Area	1340.43 ft ² / 124.53 m ²

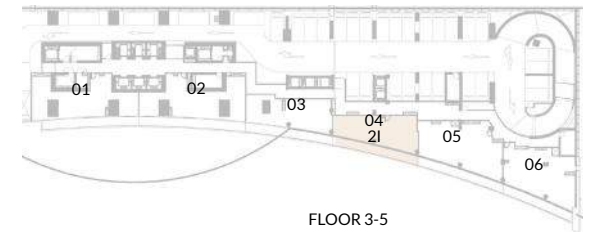
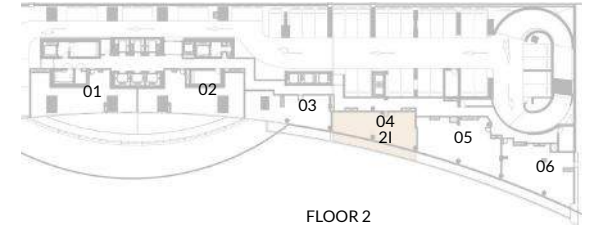
Floor	2	Unit 03
-------	---	---------



2 Bedroom Type I



MARINA VIEW

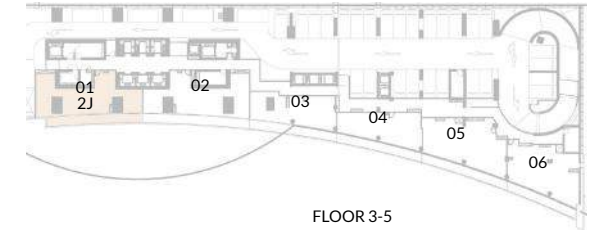


Floor	2-5
Unit Area	1043.56 ft ² / 96.95m ²
Balcony Area	322.38 ft ² / 29.95 m ²
Total Area	1365.94 ft ² / 126.90 m ²

Floor	2-5	Unit 04
-------	-----	---------



2 Bedroom Type J



FLOOR 3-5



MARINA VIEW

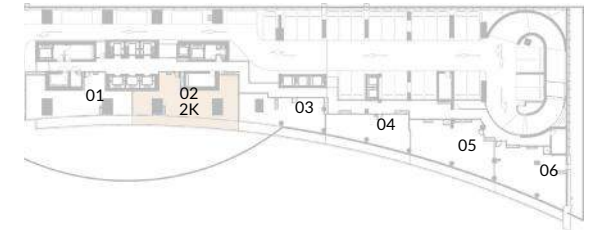
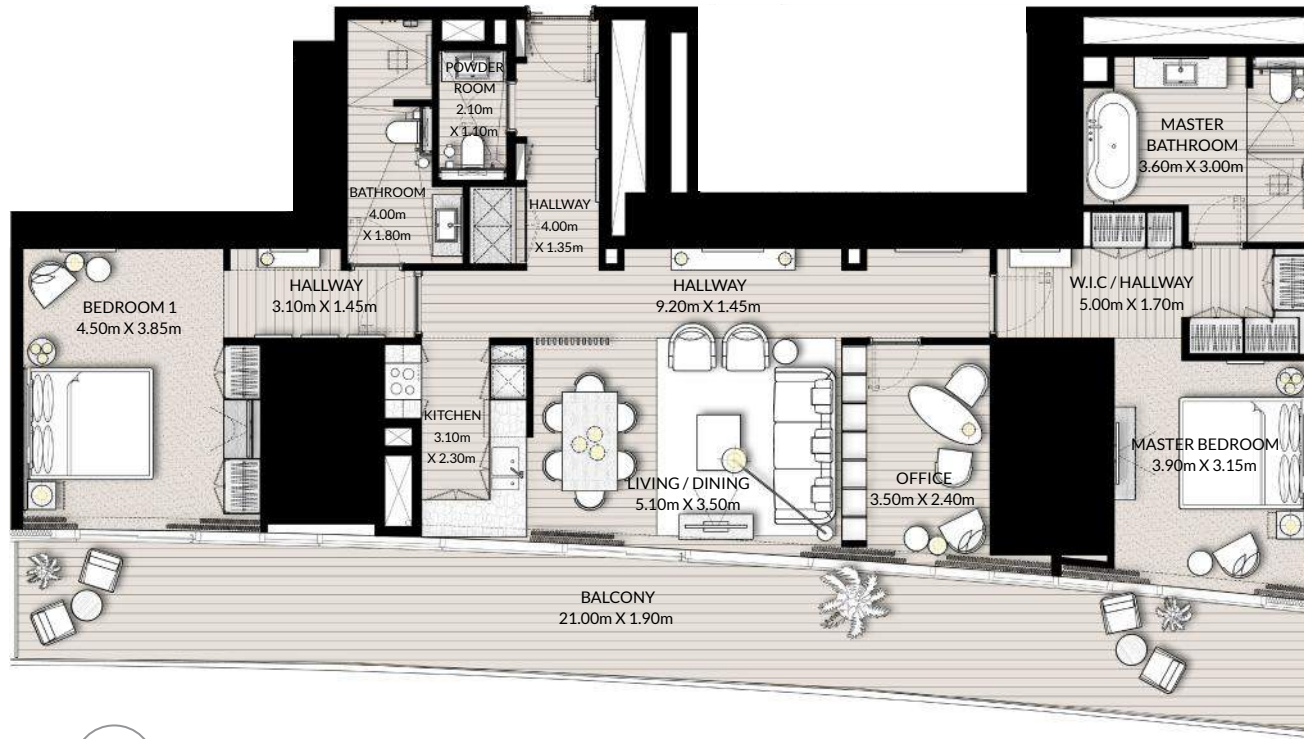
Floor	3-5
Unit Area	1513.51 ft ² / 140.61 m ²
Balcony Area	358.76 ft ² / 33.33 m ²
Total Area	1872.27 ft ² / 173.94 m ²

Floor	3-5	Unit 01
-------	-----	---------

1. All dimensions are in imperial and metric, and measured to structural elements and exclude wall finishes and construction tolerances. 2. All materials, dimensions, and drawings are approximate only. 3. Information is subject to change without notice, at developer's absolute discretion. 4. Actual area may vary from the stated area. 5. Drawings not to scale. 6. All images used are for illustrative purposes only and do not represent the actual size, features, specifications, fittings, and furnishings. 7. The developer reserves the right to make revisions/alterations, at its absolute discretion, without any liability whatsoever.



2 Bedroom Type K



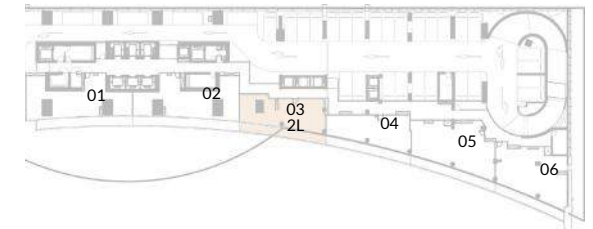
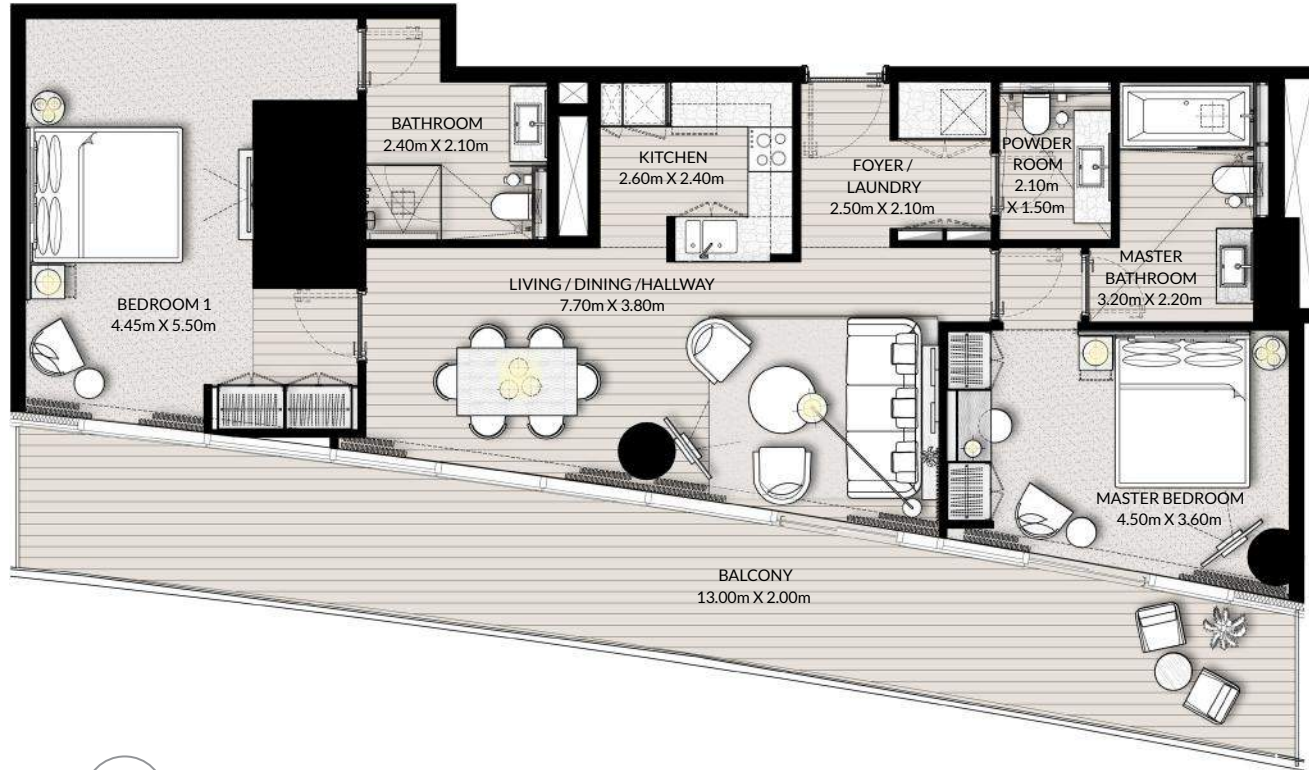
MARINA VIEW

Floor	3-5
Unit Area	1536.55 ft ² / 142.75 m ²
Balcony Area	397.73 ft ² / 36.95 m ²
Total Area	1934.28 ft ² / 179.70 m ²

Floor	3-5	Unit 02
-------	-----	---------



2 Bedroom Type L



MARINA VIEW

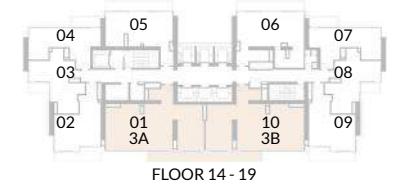
Floor	3-5
Unit Area	1100.18 ft ² / 102.21 m ²
Balcony Area	325.61 ft ² / 30.25 m ²
Total Area	1425.79 ft ² / 132.46 m ²

Floor	3-5	Unit 03
-------	-----	---------

FLOORPLANS
3 BED ROOM



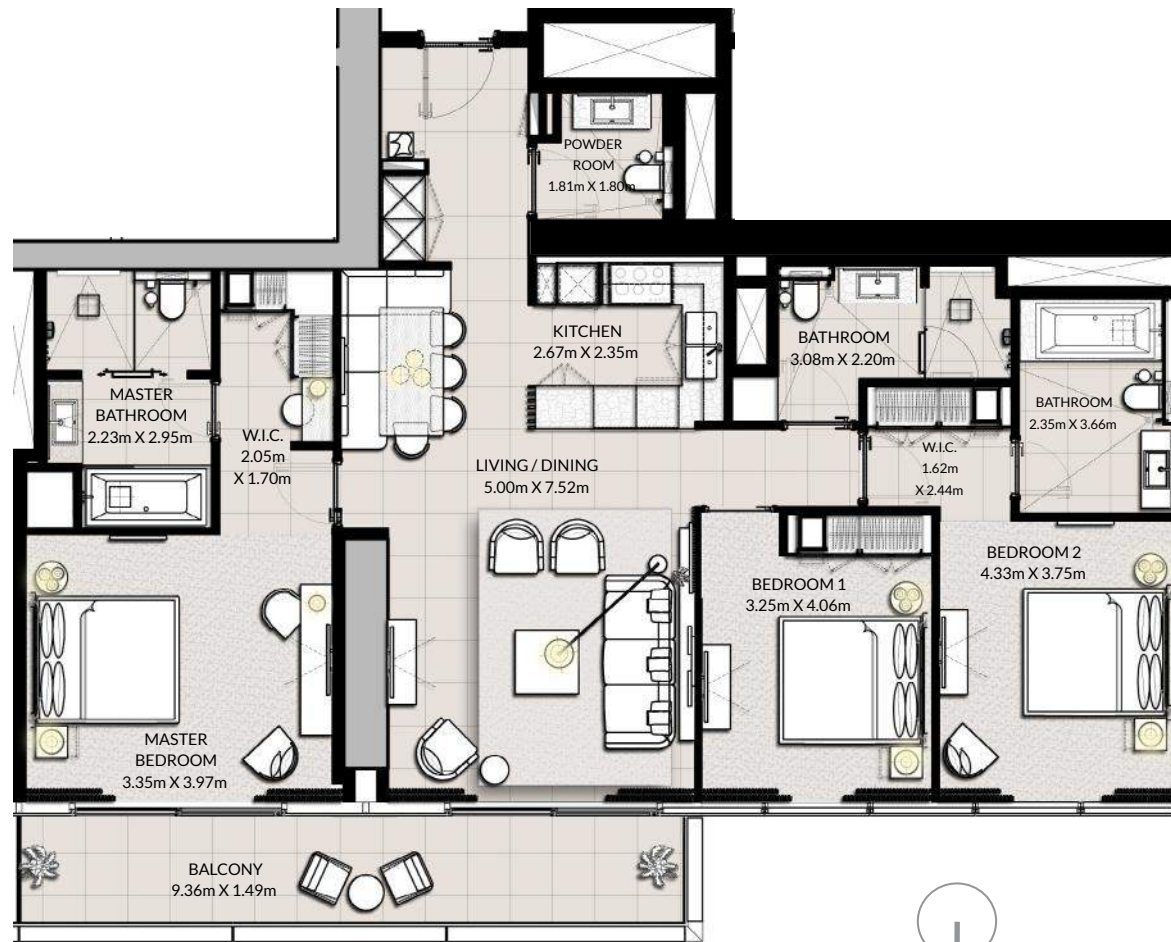
3 Bedroom Type A & B



MARINA VIEW

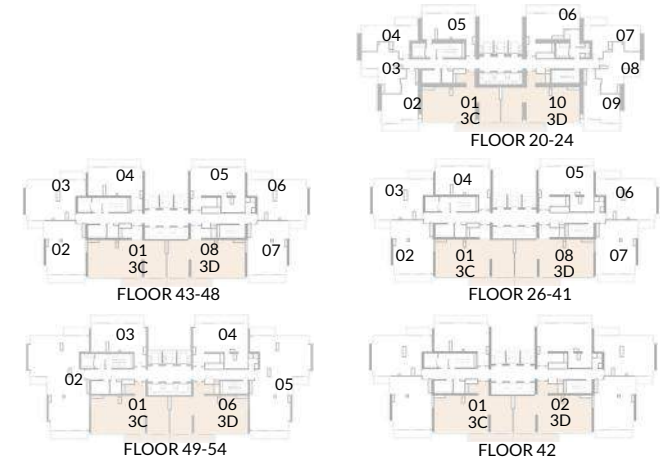
Floor	14-19
Unit Area	1516.63 ft ² / 140.90 m ²
Balcony Area	154.25 ft ² / 14.33 m ²
Total Area	1670.88 ft ² / 155.23 m ²

Floor	14-19	Unit 01 & 10
-------	-------	--------------



MARINA VIEW

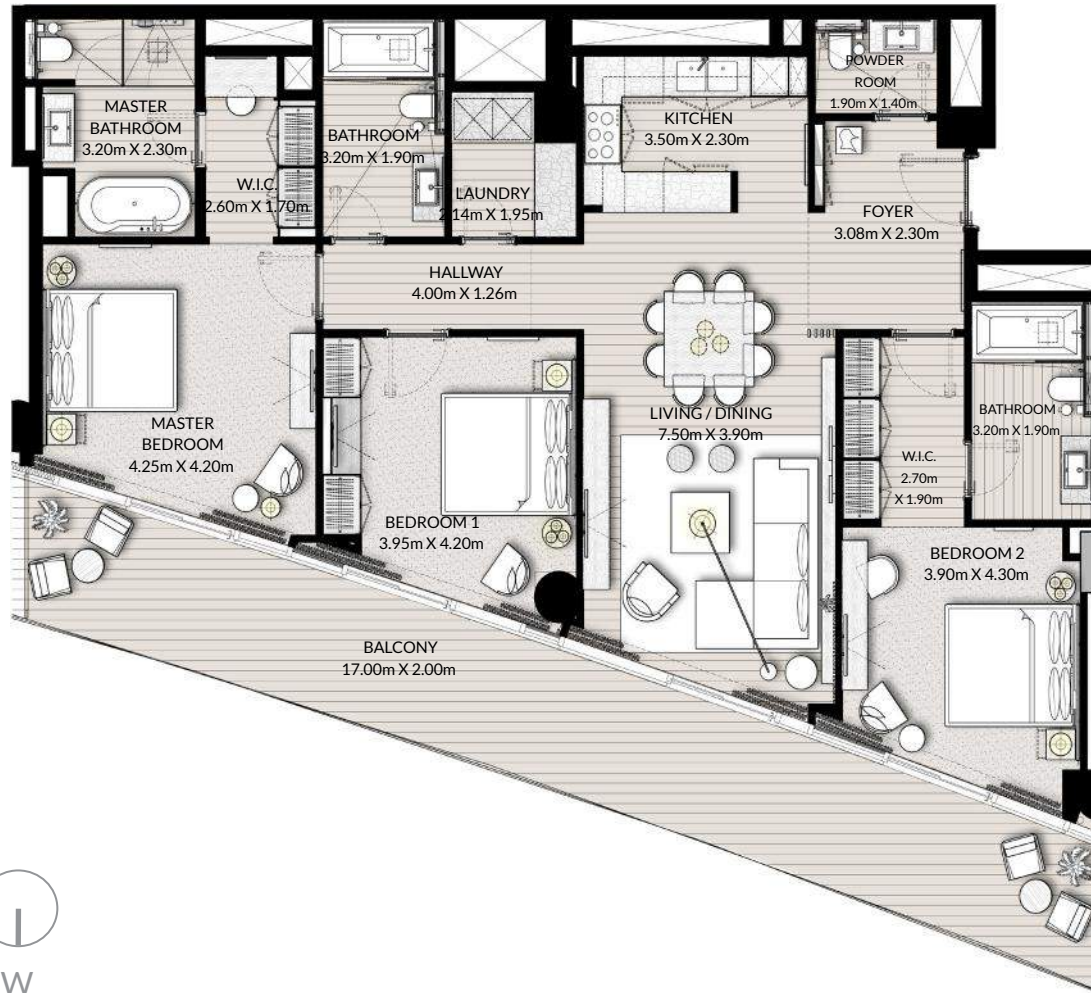
3 Bedroom Type C & D



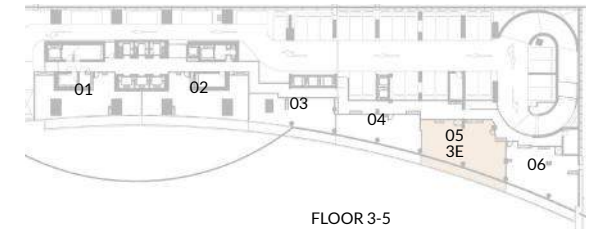
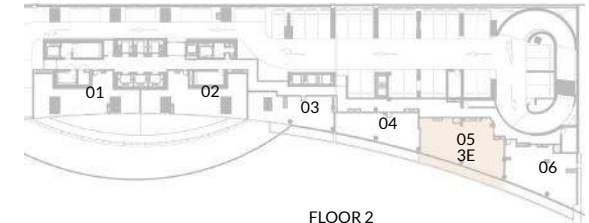
Floor	20-24	26-30	31-41	42-48	49-54
Unit Area	1513.41 ft ² / 140.60 m ²	1519.00 ft ² / 141.12 m ²	1519.43 ft ² / 141.16 m ²	1528.26 ft ² / 141.98 m ²	1525.57 ft ² / 141.73 m ²
Balcony Area	154.25 ft ² / 14.33 m ²	154.25 ft ² / 14.33 m ²	154.25 ft ² / 14.33 m ²	154.25 ft ² / 14.33 m ²	154.25 ft ² / 14.33 m ²
Total Area	1667.66 ft ² / 154.93 m ²	1673.25 ft ² / 155.45 m ²	1673.68 ft ² / 155.49 m ²	1682.51 ft ² / 156.31 m ²	1679.82 ft ² / 156.06 m ²

Floor	20-24	Unit 01 & 10
Floor	26-48	Unit 01 & 08
Floor	42	Unit 01 & 02
Floor	43-45	Unit 01 & 08
Floor	49-54	Unit 01 & 06

1. All dimensions are in imperial and metric, and measured to structural elements and exclude wall finishes and construction tolerances. 2. All materials, dimensions, and drawings are approximate only. 3. Information is subject to change without notice, at developer's absolute discretion. 4. Actual area may vary from the stated area. 5. Drawings not to scale. 6. All images used are for illustrative purposes only and do not represent the actual size, features, specifications, fittings, and furnishings. 7. The developer reserves the right to make revisions/alterations, at its absolute discretion, without any liability whatsoever.



3 Bedroom Type E



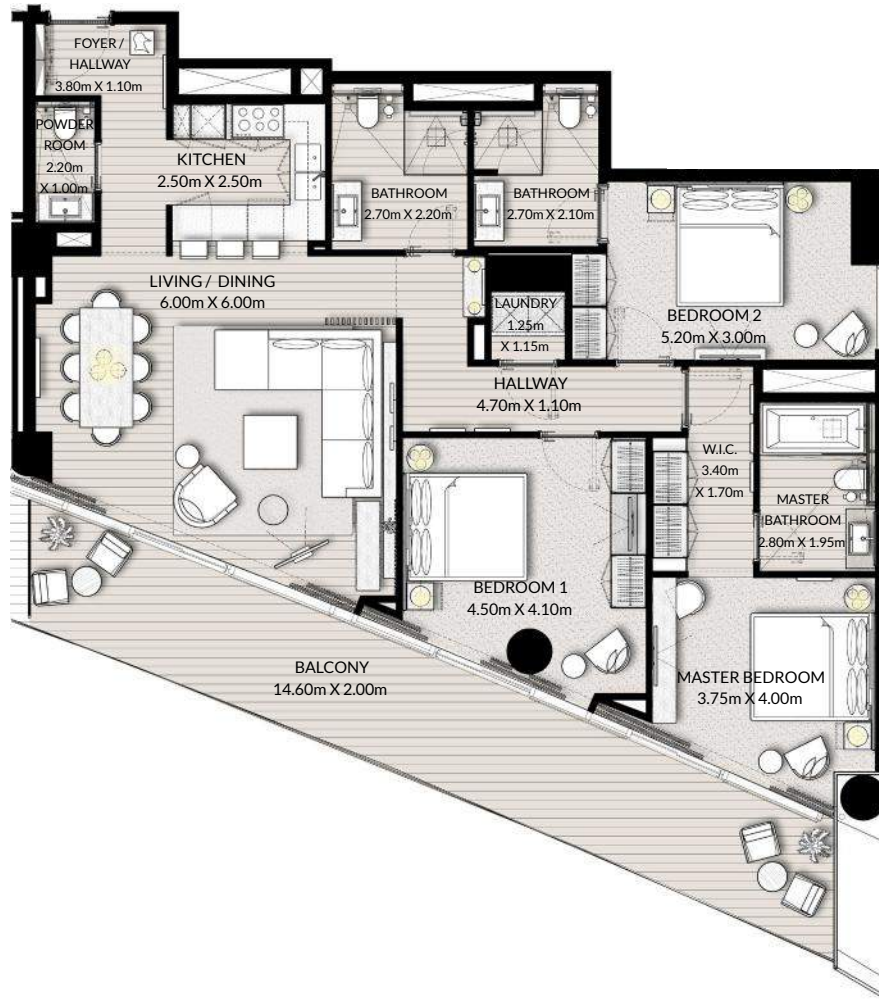
MARINA VIEW

Floor	2-5
Unit Area	1535.79 ft ² / 142.68 m ²
Balcony Area	330.77 ft ² / 30.73 m ²
Total Area	1866.56 ft ² / 173.41 m ²

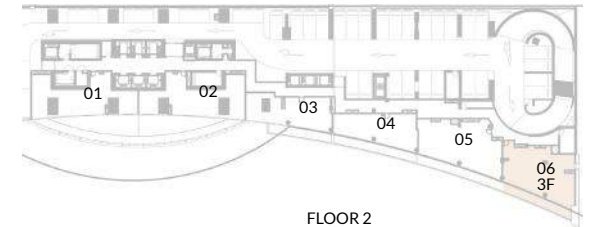
Floor	2-5	Unit 05
-------	-----	---------



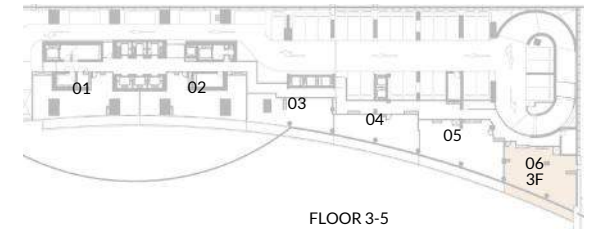
3 Bedroom Type F



MARINA VIEW



FLOOR 2



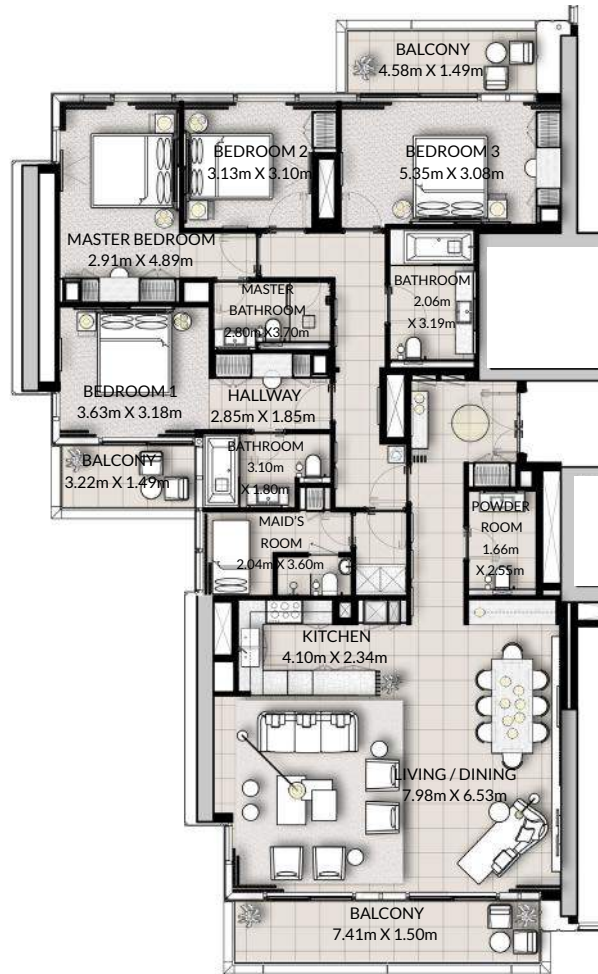
FLOOR 3-5

Floor	2-5
Unit Area	1426.65 ft ² / 132.54 m ²
Balcony Area	293.21 ft ² / 27.24 m ²
Total Area	1719.86 ft ² / 159.78 m ²

Floor	2-5	Unit 06
-------	-----	---------

1. All dimensions are in imperial and metric, and measured to structural elements and exclude wall finishes and construction tolerances. 2. All materials, dimensions, and drawings are approximate only. 3. Information is subject to change without notice, at developer's absolute discretion. 4. Actual area may vary from the stated area. 5. Drawings not to scale. 6. All images used are for illustrative purposes only and do not represent the actual size, features, specifications, fittings, and furnishings. 7. The developer reserves the right to make revisions/alterations, at its absolute discretion, without any liability whatsoever.

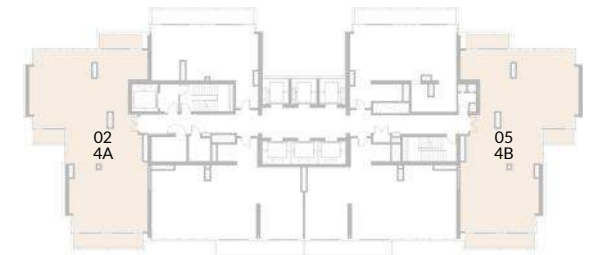
FLOORPLANS
4 BED ROOM



4 Bedroom Type A & B

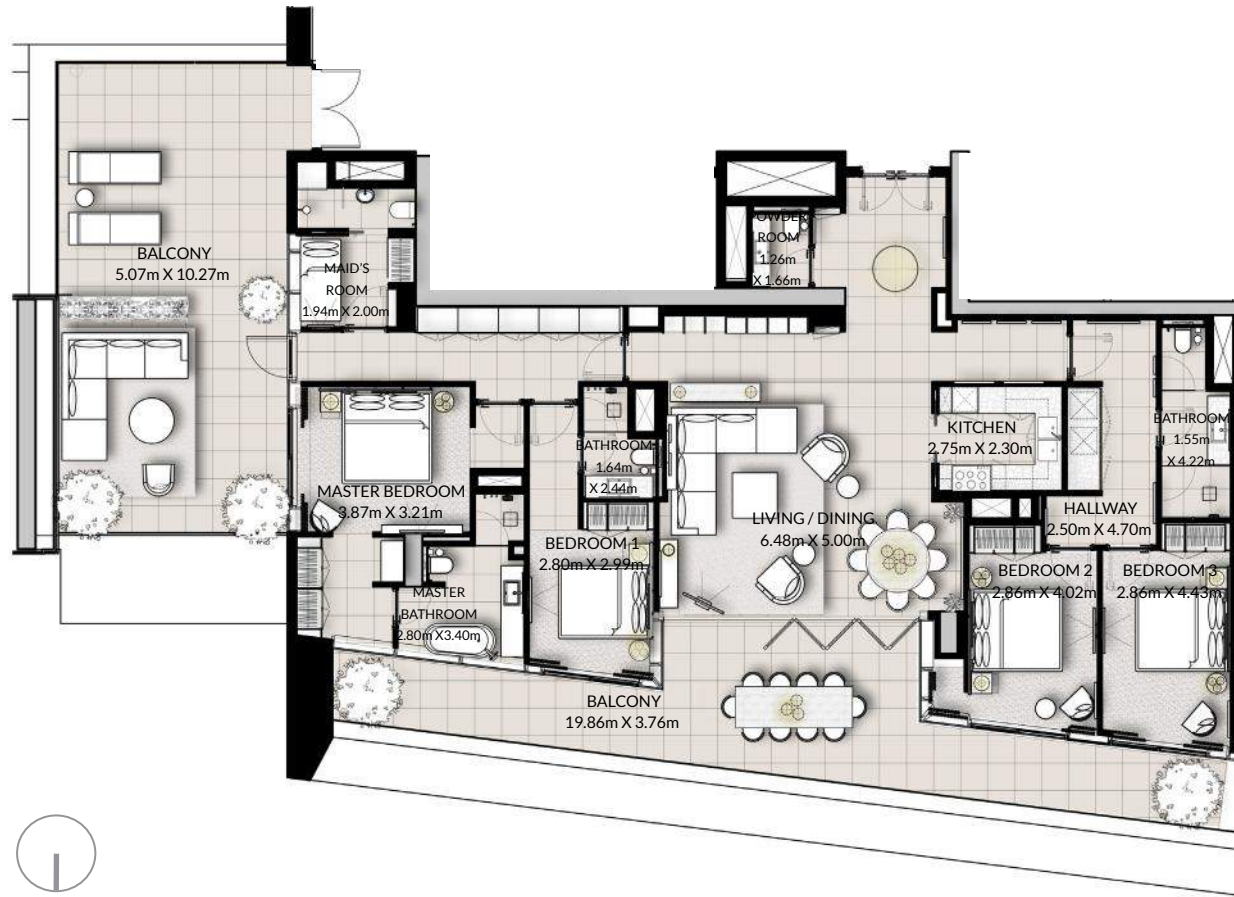


MARINA VIEW



Floor	49-54
Unit Area	2082.39 ft ² / 193.46 m ²
Balcony Area	251.12 ft ² / 23.33 m ²
Total Area	2333.51 ft ² / 216.79 m ²

Floor	49-54	Unit 02 & 05
-------	-------	--------------



4 Bedroom Type C Penthouse



MARINA VIEW

Floor	55-56
Unit Area	2057.41 ft ² / 191.14 m ²
Balcony Area	1038.50 ft ² / 96.48 m ²
Total Area	3095.91 ft ² / 287.62 m ²

Floor	55-56	Unit 01
-------	-------	---------

1. All dimensions are in imperial and metric, and measured to structural elements and exclude wall finishes and construction tolerances. 2. All materials, dimensions, and drawings are approximate only. 3. Information is subject to change without notice, at developer's absolute discretion. 4. Actual area may vary from the stated area. 5. Drawings not to scale. 6. All images used are for illustrative purposes only and do not represent the actual size, features, specifications, fittings, and furnishings. 7. The developer reserves the right to make revisions/alterations, at its absolute discretion, without any liability whatsoever.



4 Bedroom Type D Penthouse



MARINA VIEW

Floor	55-56
Unit Area	2121.14 ft ² / 197.06 m ²
Balcony Area	1394.68 ft ² / 129.57 m ²
Total Area	3515.82 ft ² / 326.63 m ²

Floor	55-56	Unit 02
-------	-------	---------

1. All dimensions are in imperial and metric, and measured to structural elements and exclude wall finishes and construction tolerances. 2. All materials, dimensions, and drawings are approximate only. 3. Information is subject to change without notice, at developer's absolute discretion. 4. Actual area may vary from the stated area. 5. Drawings not to scale. 6. All images used are for illustrative purposes only and do not represent the actual size, features, specifications, fittings, and furnishings. 7. The developer reserves the right to make revisions/alterations, at its absolute discretion, without any liability whatsoever.