

Selina  
bay

Coming  
Soon

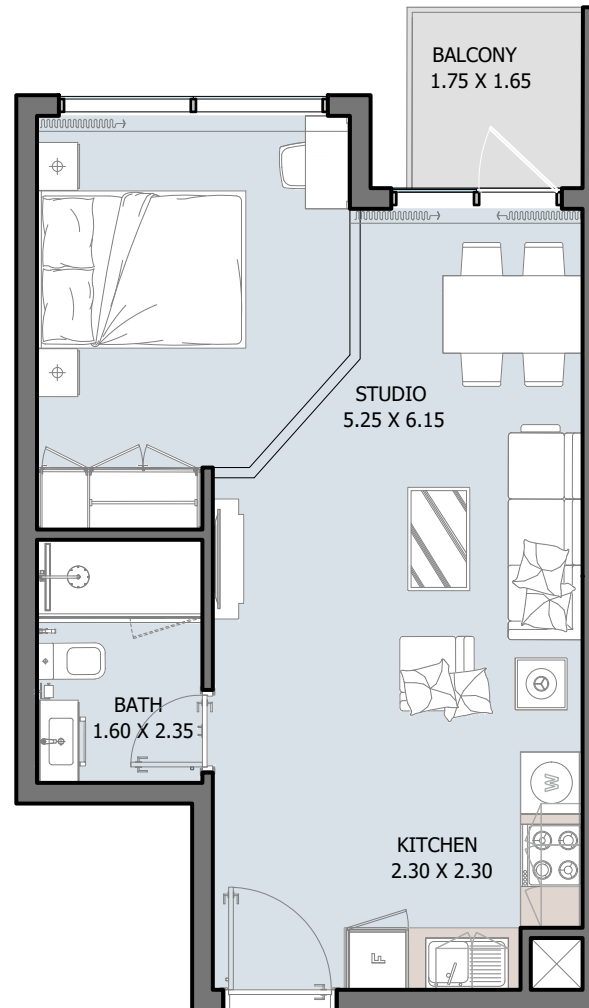
# UNIT TYPES

All drawings and dimensions are approximate. Drawings are not to scale and are subject to change without notice. The developer reserves the right to make revisions. The units are measured at typical floors in the building and columns may vary in size depending on the floor level. The furnishing and accessories shown are for representation only. The availability, length and width of the balcony varies depending on which floor and which orientation the unit is located within the building. There will be slight differences in the internal areas between the same unit types depending on the shaft sizes that go through the units.



# ST

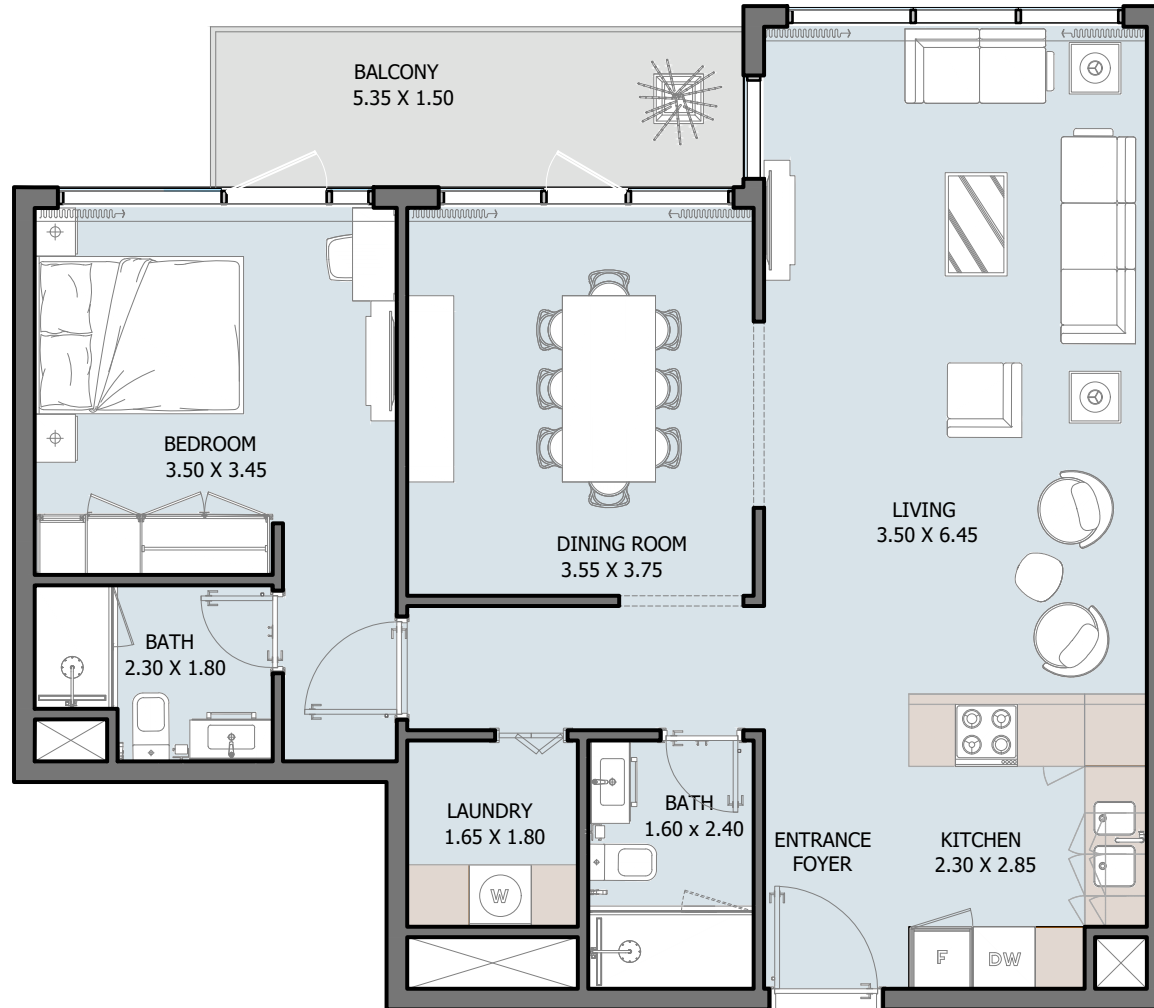
From Ground to 16<sup>th</sup> Floor



Internal Area	417.53 to 421.51 sq.ft
Outdoor Area	25.83 to 444.87 sq.ft
Total Area	447.13 to 863.59 sq.ft

# 1B | Type A

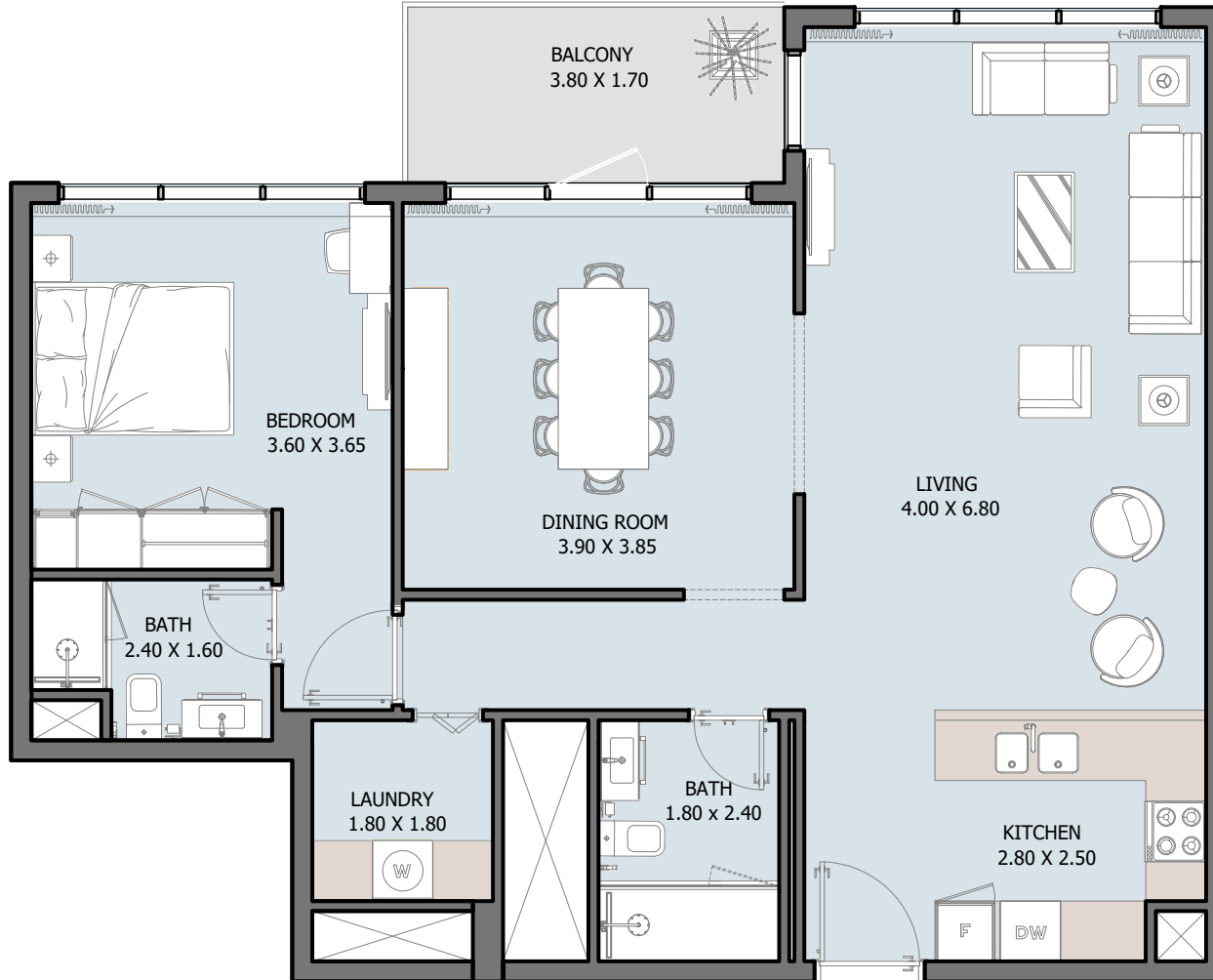
From Ground to 16<sup>th</sup> Floor



Internal Area	832.16 to 858.64 sq.ft
Outdoor Area	60.39 to 610.42 sq.ft
Total Area	905.78 to 1442.58 sq.ft

# 1B | Type B

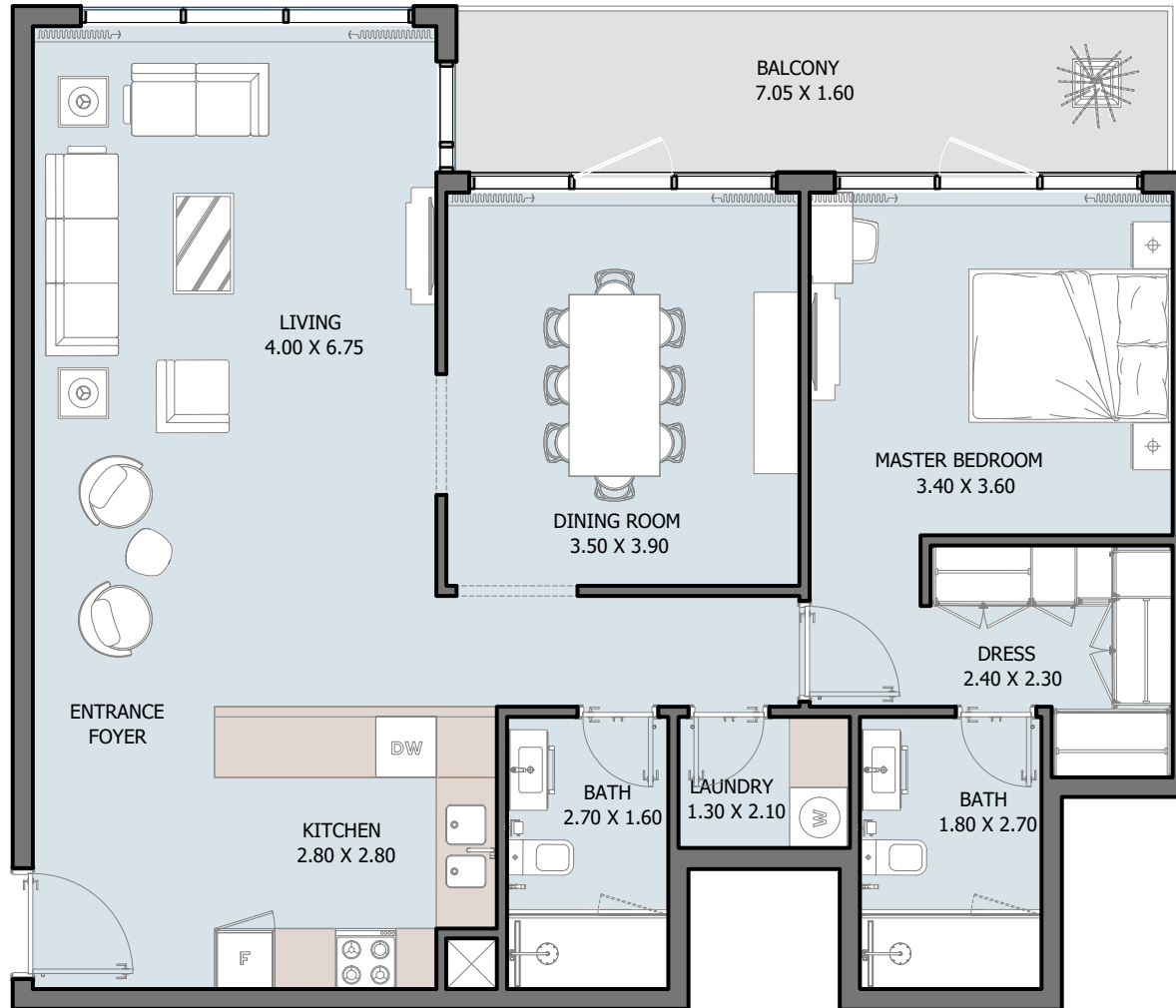
From Ground to 16<sup>th</sup> Floor



Internal Area	912.03 to 923 sq.ft
Outdoor Area	69.53 to 520.54 sq.ft
Total Area	981.56 to 1436.55 sq.ft

# 1B | Type C

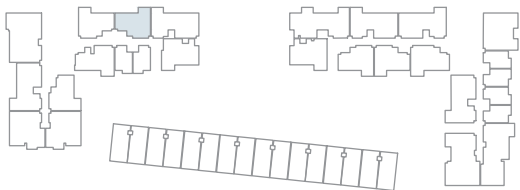
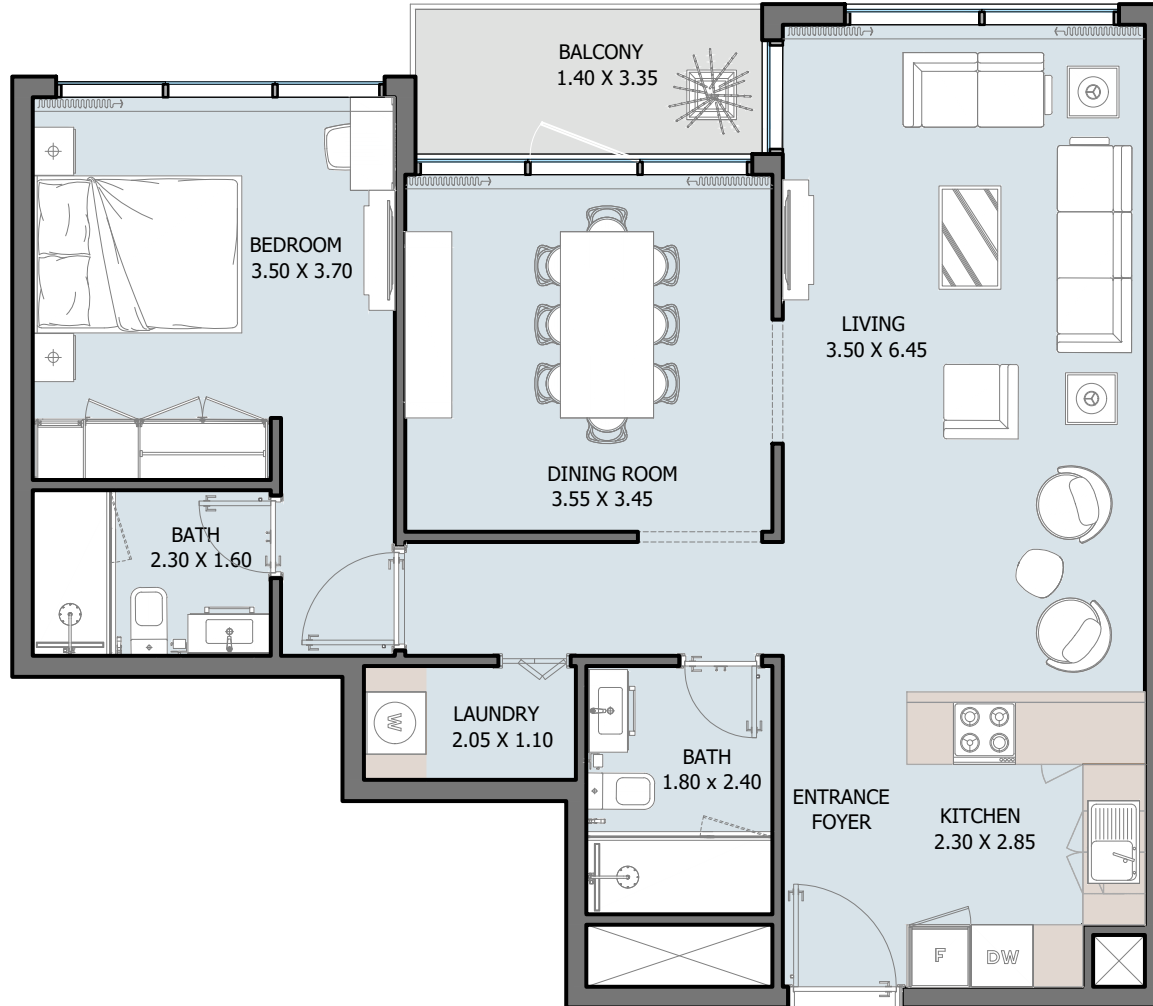
From Ground to 16<sup>th</sup> Floor



Internal Area	953.47 to 976.50 sq.ft
Outdoor Area	121.42 to 125.18 sq.ft
Total Area	1074.88 to 1097.92 sq.ft

# 1B | Type D

10<sup>th</sup> Floor

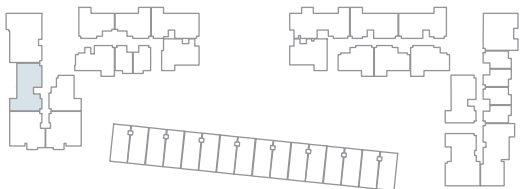
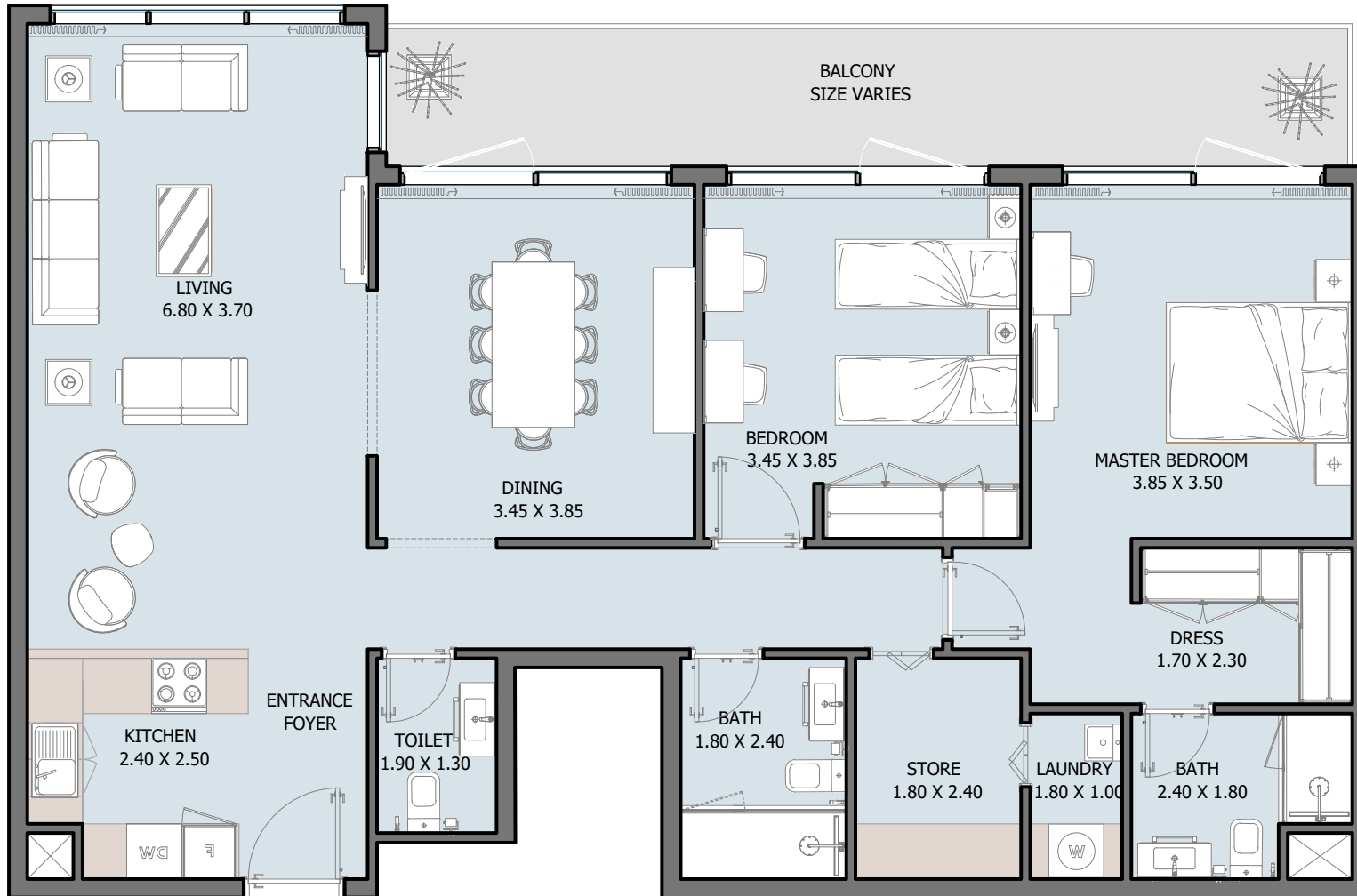


Internal Area	819.67 sq.ft
Outdoor Area	43.27 to 50.48 sq.ft
Total Area	862.94 to 870.15 sq.ft



# 2B | Type A

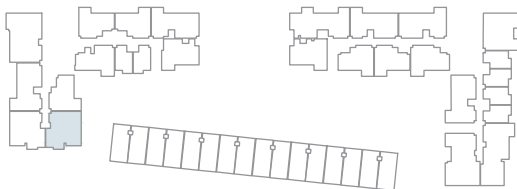
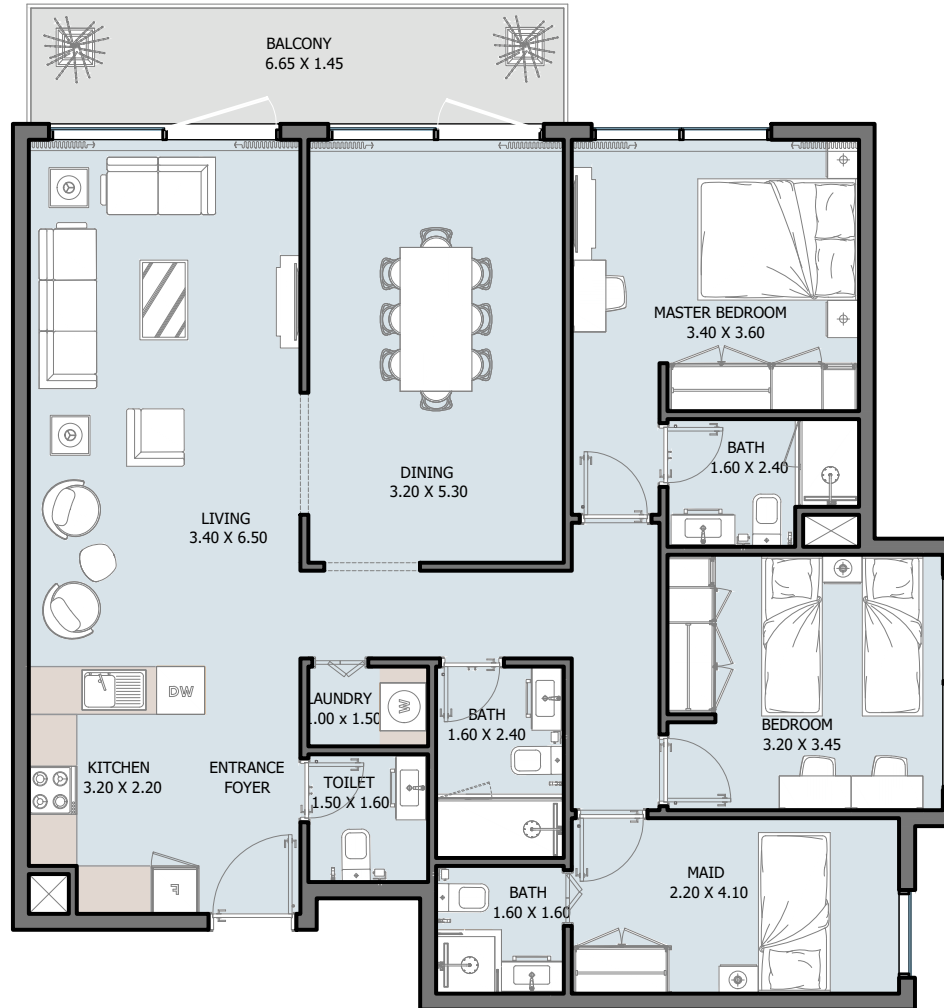
From Ground to 16<sup>th</sup> Floor



Internal Area	1169.28 to 1193.50 sq.ft
Outdoor Area	62.22 to 1548.39 sq.ft
Total Area	1233 to 2735 sq.ft

# 2B | Type B

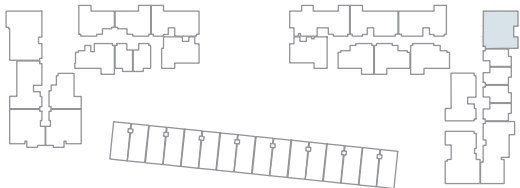
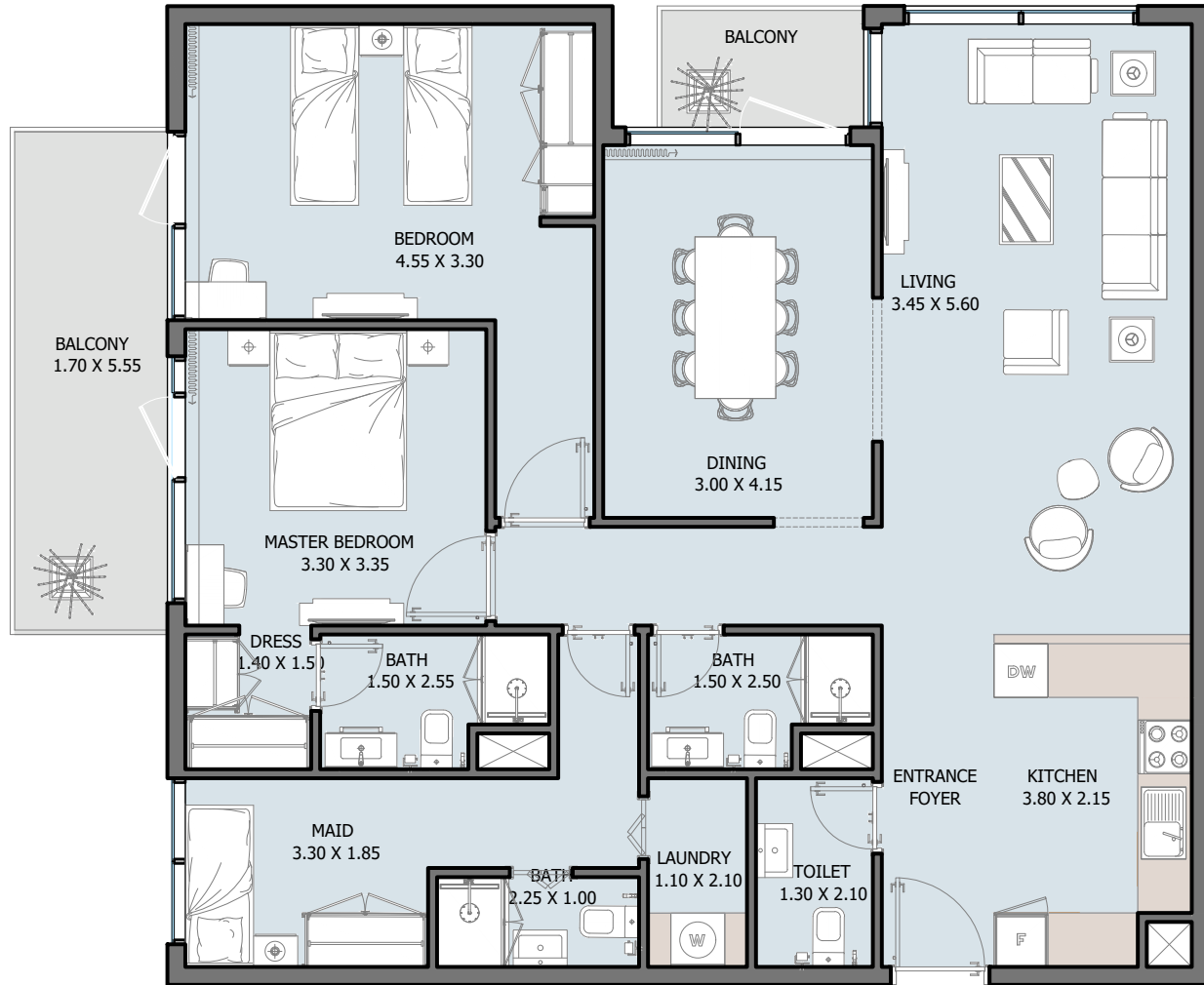
From Ground to 16<sup>th</sup> Floor



Internal Area	1172.51 to 1182.95 sq.ft
Outdoor Area	104.19 to 1874.75 sq.ft
Total Area	1278.54 to 3047.26 sq.ft

# 2B | Type C

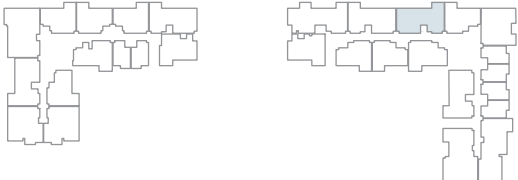
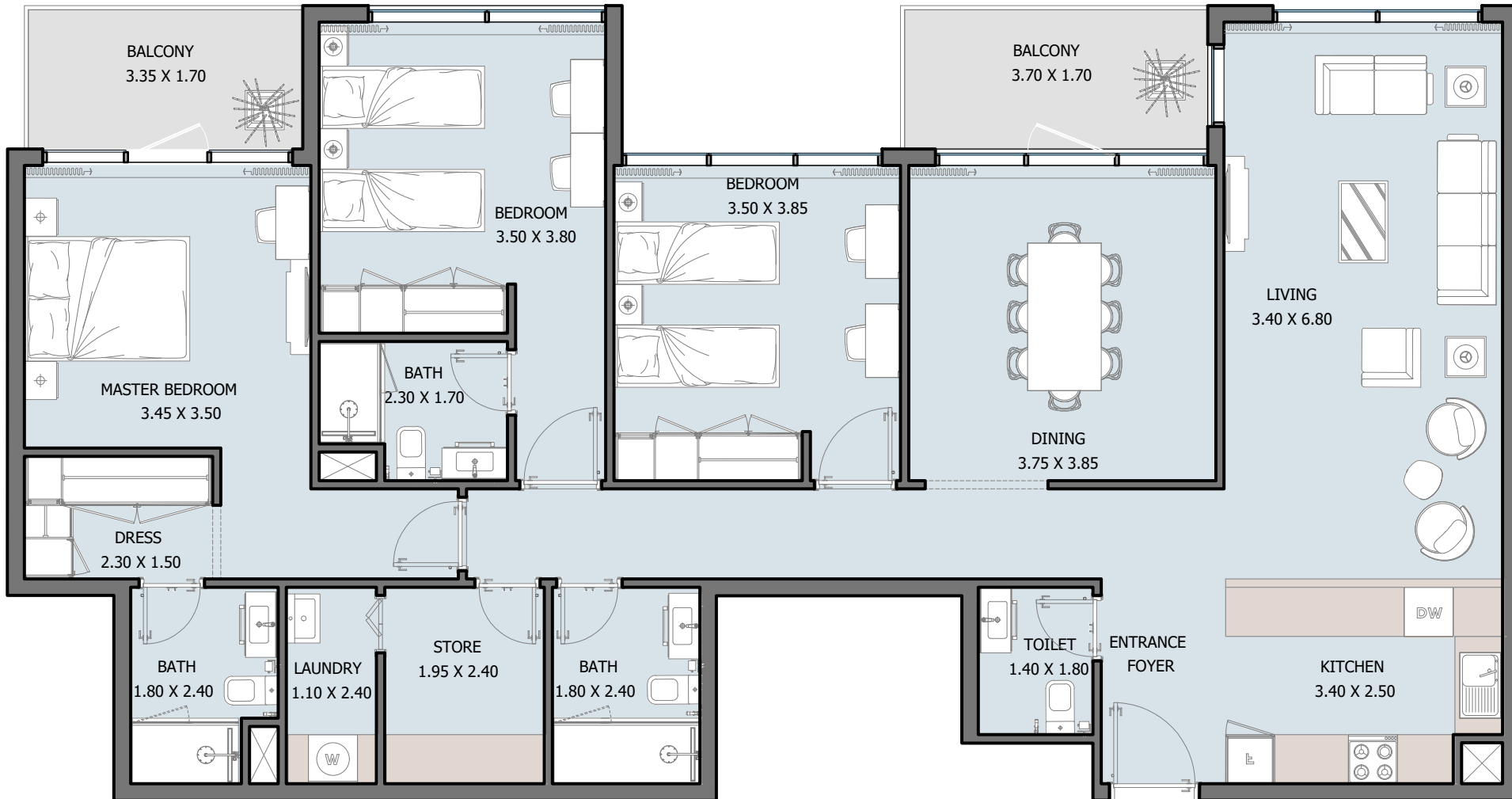
From Ground to 16<sup>th</sup> Floor



Internal Area	1207.06 to 1211.58 to sq.ft
Outdoor Area	133.04 to 1744.94 sq.ft
Total Area	1343.55 to 2952 sq.ft

# 3B | Type A

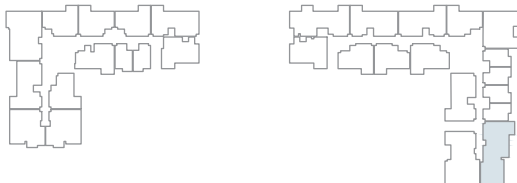
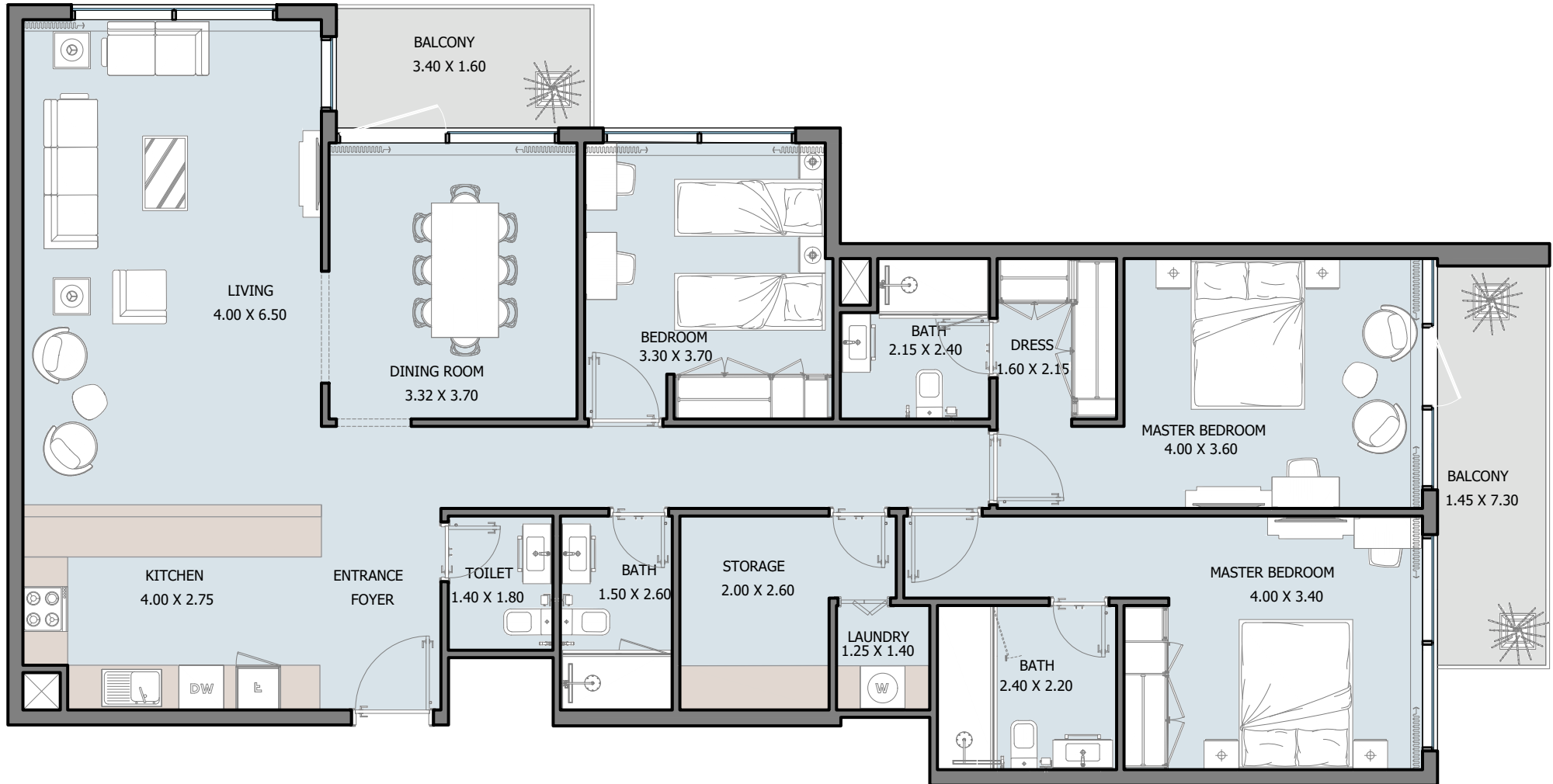
From 1<sup>st</sup> to 16<sup>th</sup> Floor



Internal Area	1457.54 to 1518.46 sq.ft
Outdoor Area	128.95 to 166.30 sq.ft
Total Area	1586.49 to 1684.77 sq.ft

# 3B | Type B

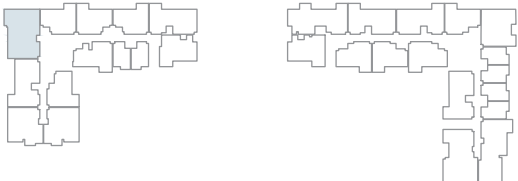
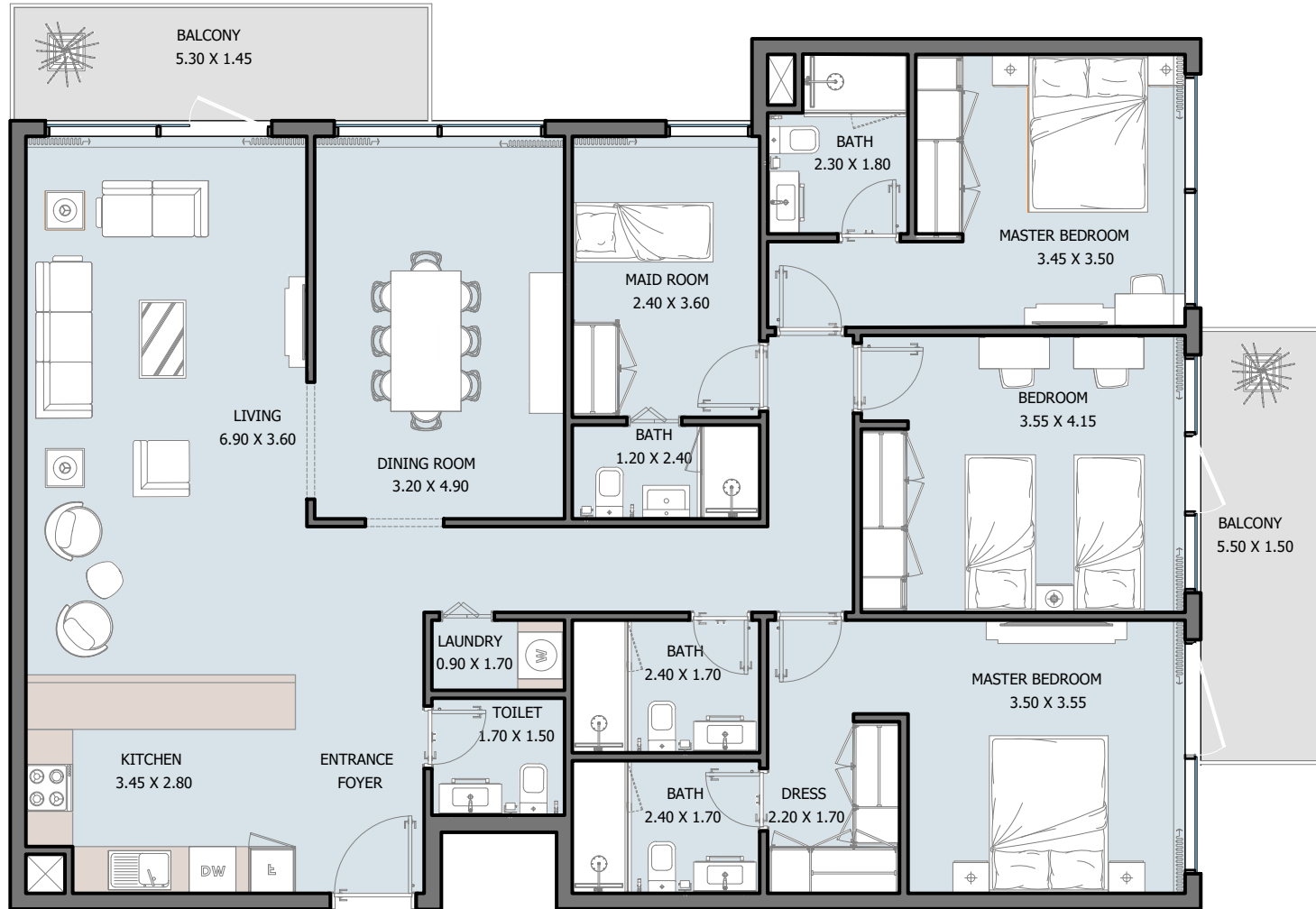
From Ground to 16<sup>th</sup> Floor



Internal Area	1505.22 to 1515.56 sq.ft
Outdoor Area	142.08 to 2108.97 sq.ft
Total Area	1656.89 to 3614.19 sq.ft

# 3B | Type C

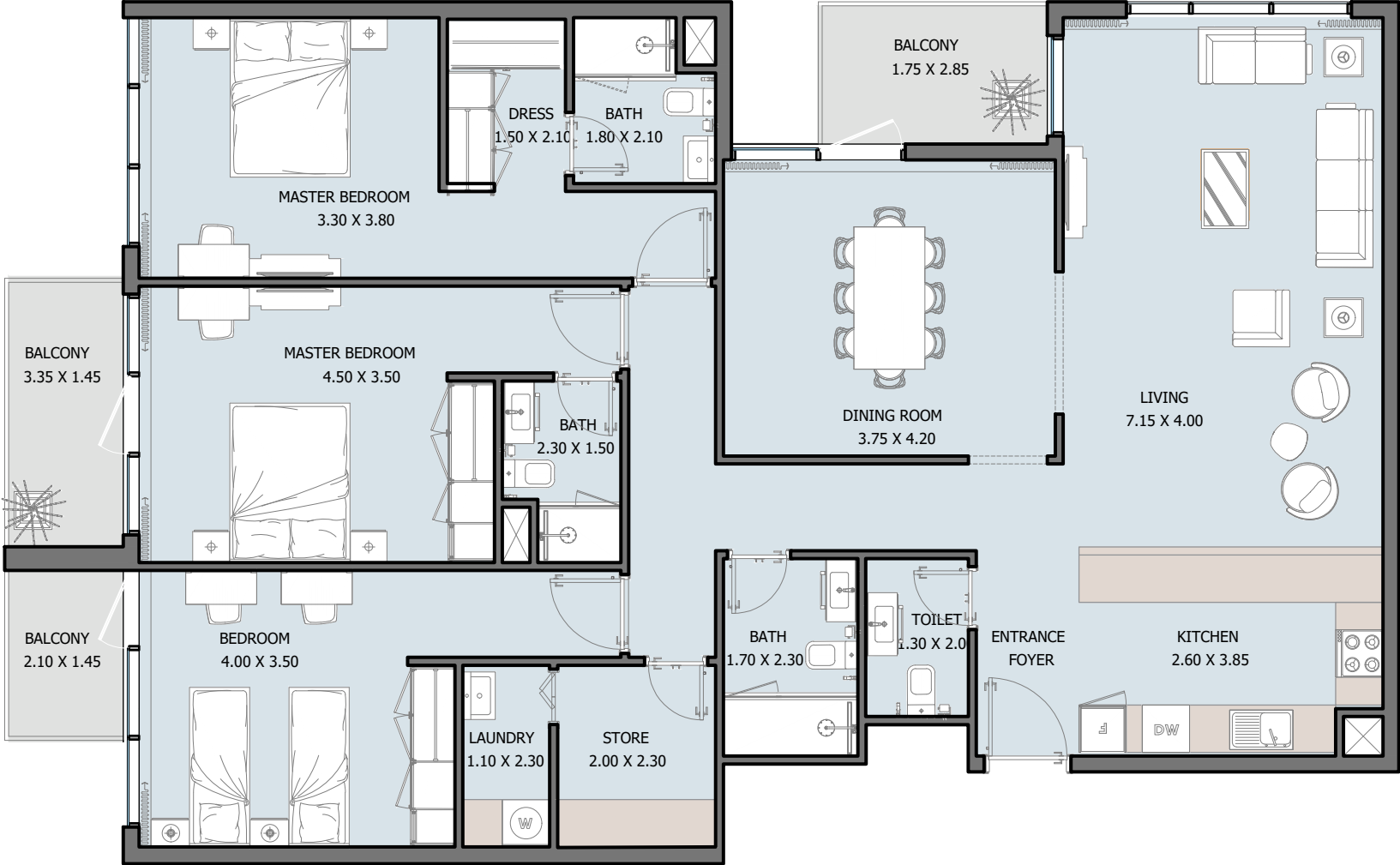
From Ground to 16<sup>th</sup> Floor



Internal Area	1582.62 to 1593.27 sq.ft
Outdoor Area	171.47 to 1954.51 sq.ft
Total Area	1764.74 to 3537.13 sq.ft

# 3B | Type D

From Ground to 16<sup>th</sup> Floor



Internal Area	1570.02 to 1579.71 sq.ft
Outdoor Area	138.75 to 2096.70 sq.ft
Total Area	1718.46 to 3666.72 sq.ft

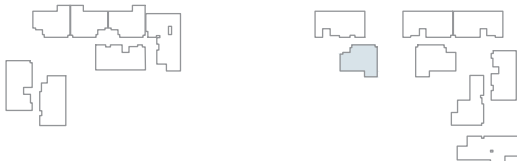
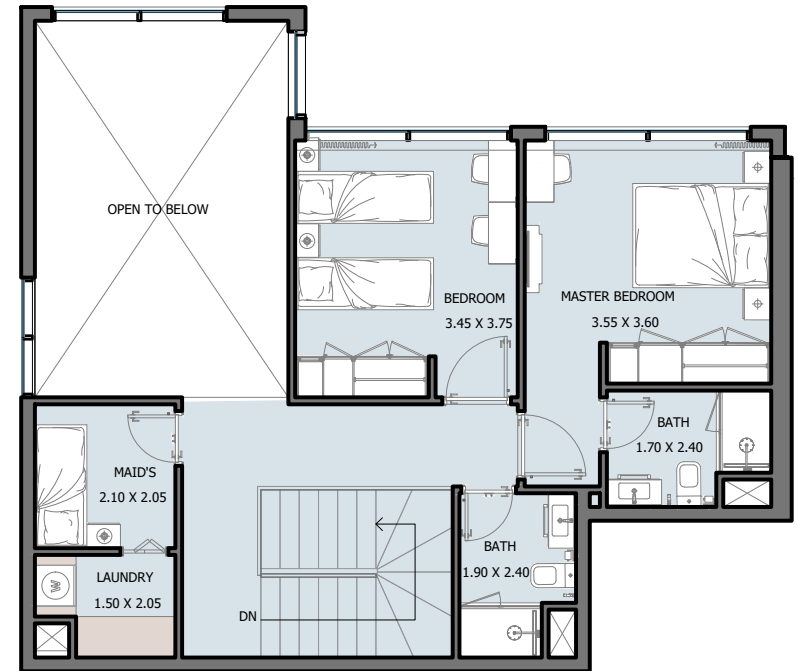
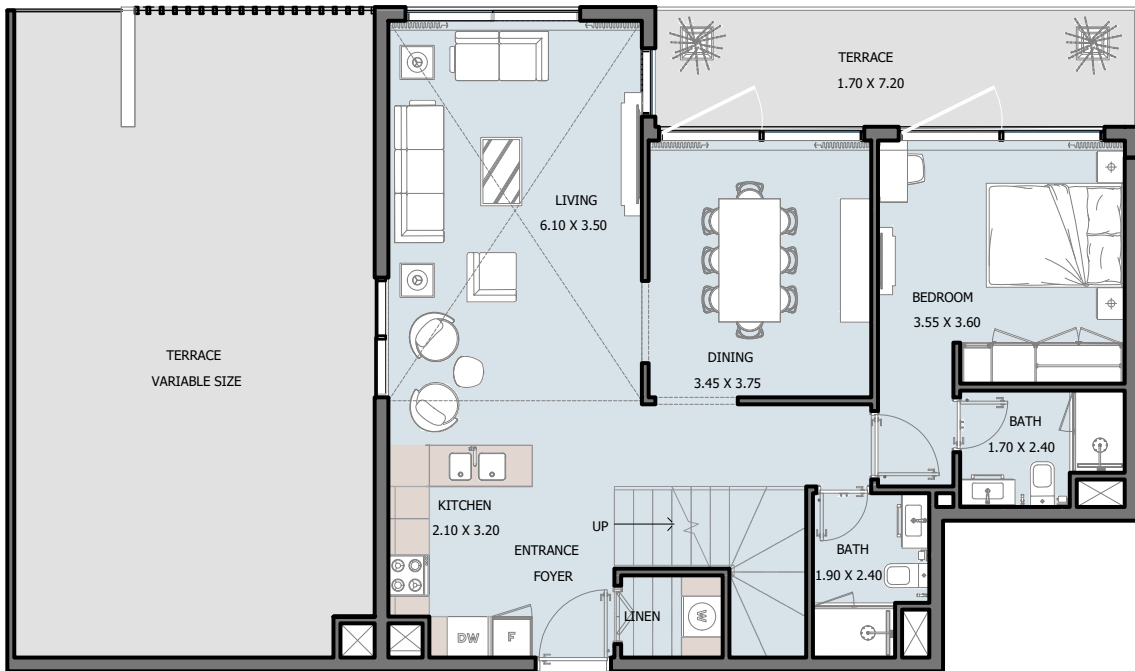


PENTHOUSE  
**Selina** WEST



# 3B | Penthouse Type A

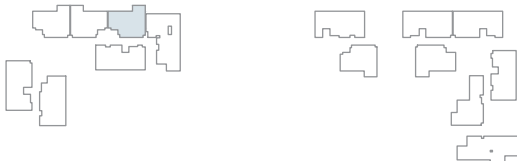
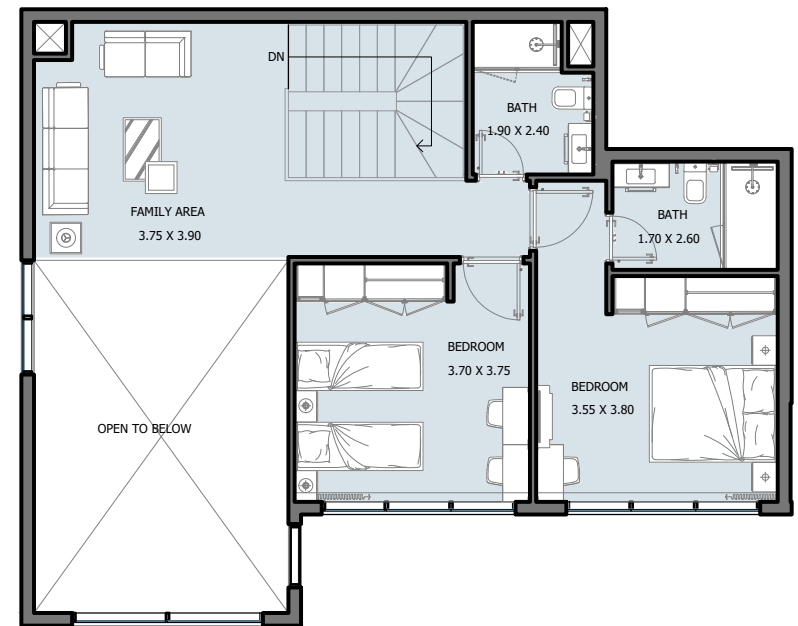
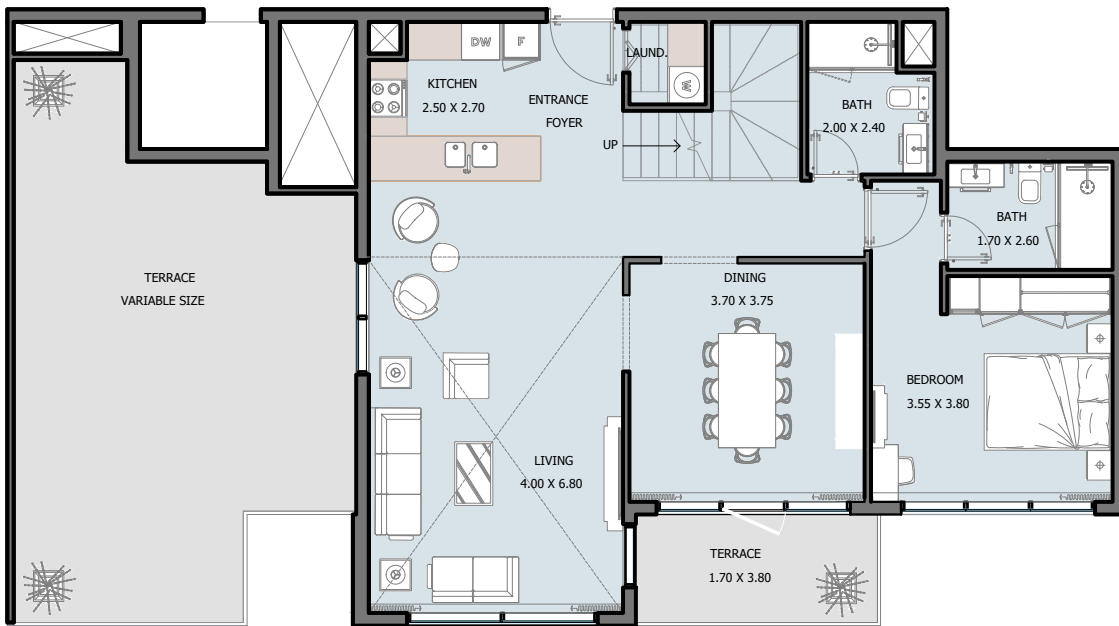
17<sup>th</sup> Floor



Internal Area	1513.73 to 1518.14 sq.ft
Outdoor Area	83.20 to 1301.89 sq.ft
Total Area	1597.69 to 2815.62 sq.ft

# 3B | Penthouse Type B

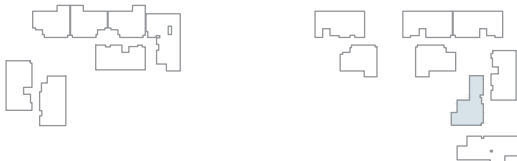
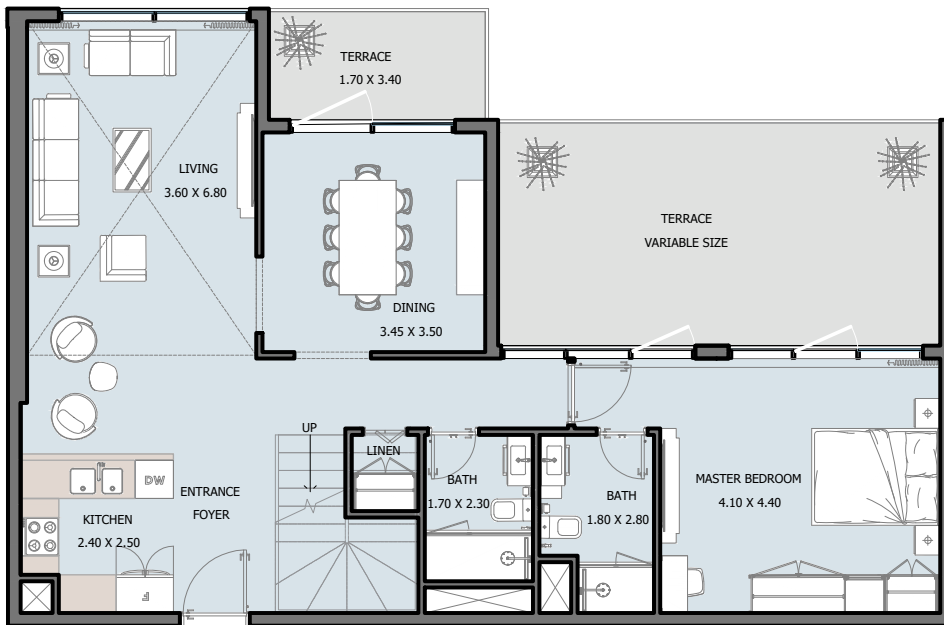
17<sup>th</sup> Floor



Internal Area	1670.88 sq.ft
Outdoor Area	534.75 sq.ft
Total Area	2205.63 sq.ft

# 3B | Penthouse Type C

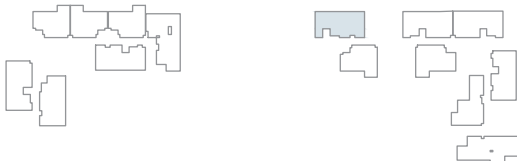
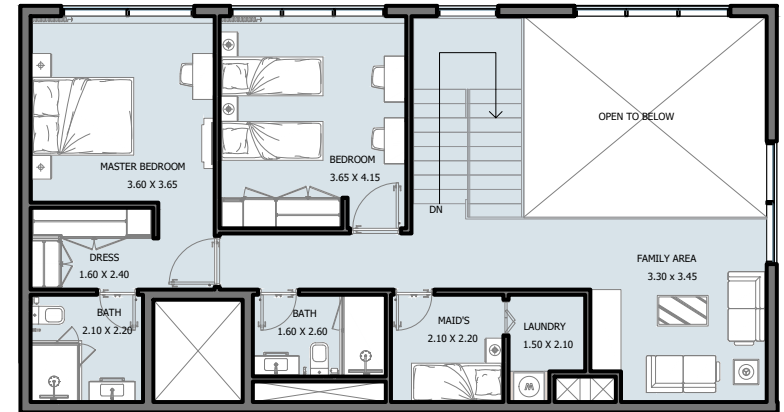
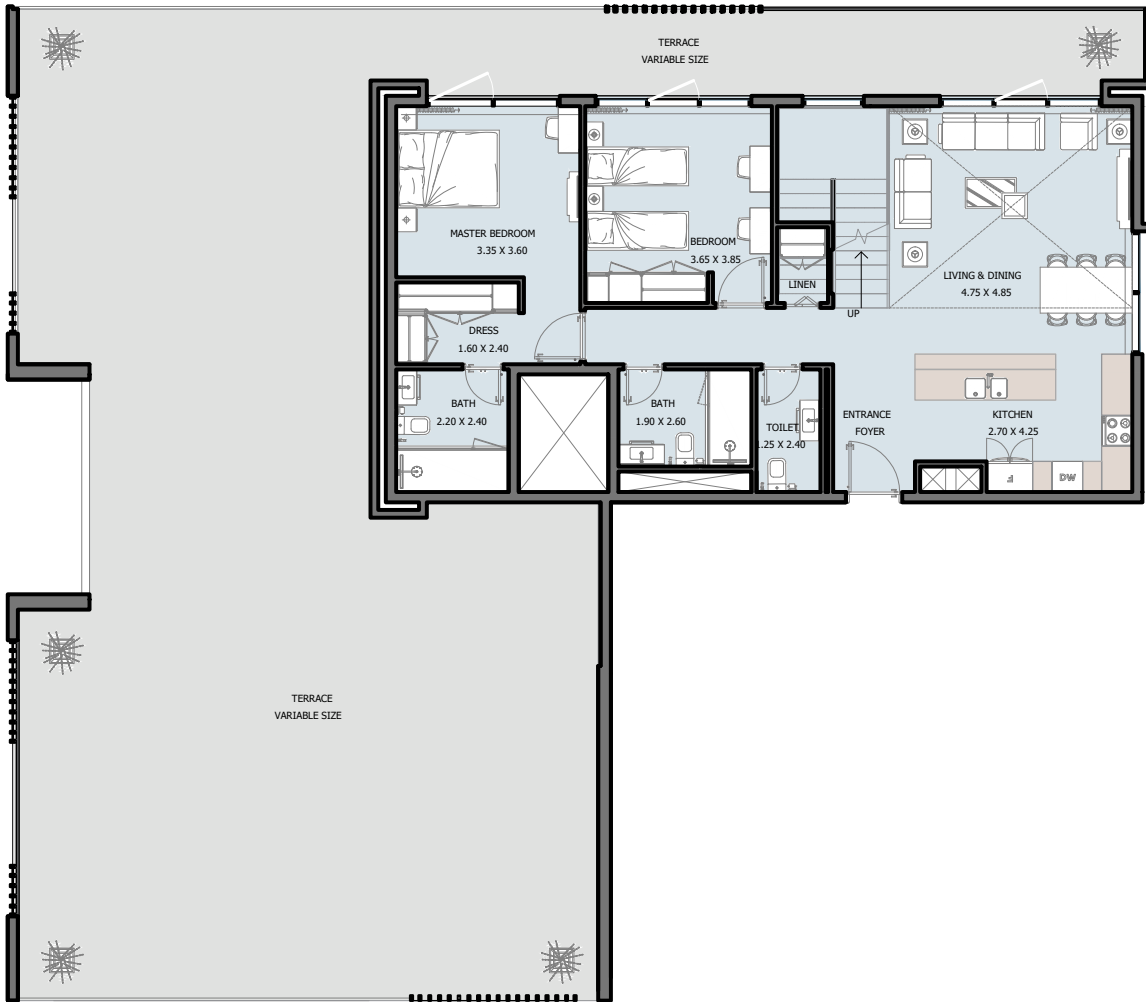
17<sup>th</sup> Floor



Internal Area	1649.57 sq.ft
Outdoor Area	323.99 sq.ft
Total Area	1973.56 sq.ft

# 4B | Penthouse Type A

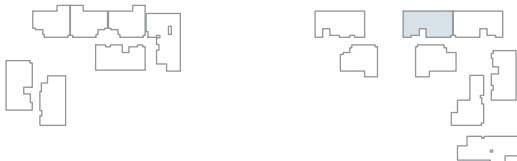
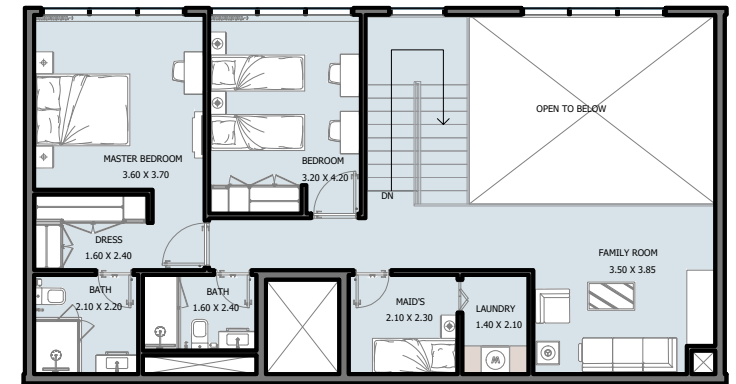
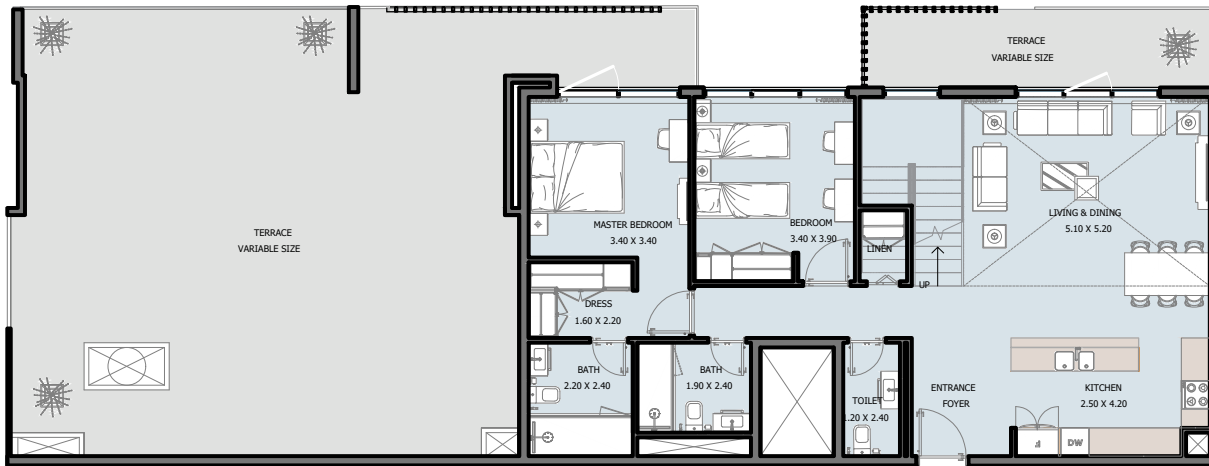
17<sup>th</sup> Floor



Internal Area	1996.06 sq.ft
Outdoor Area	2068.07 sq.ft
Total Area	4064.13 sq.ft

# 4B | Penthouse Type B

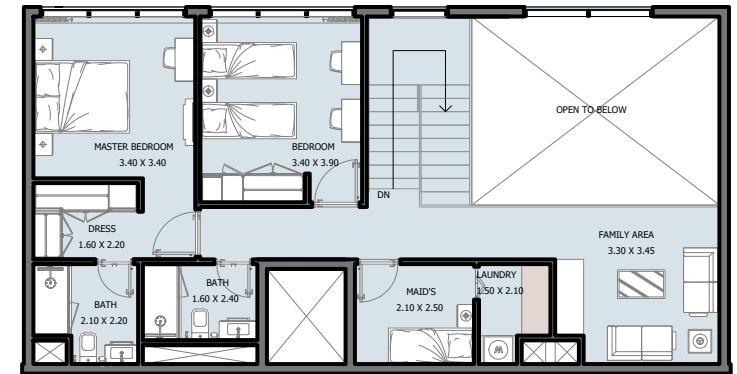
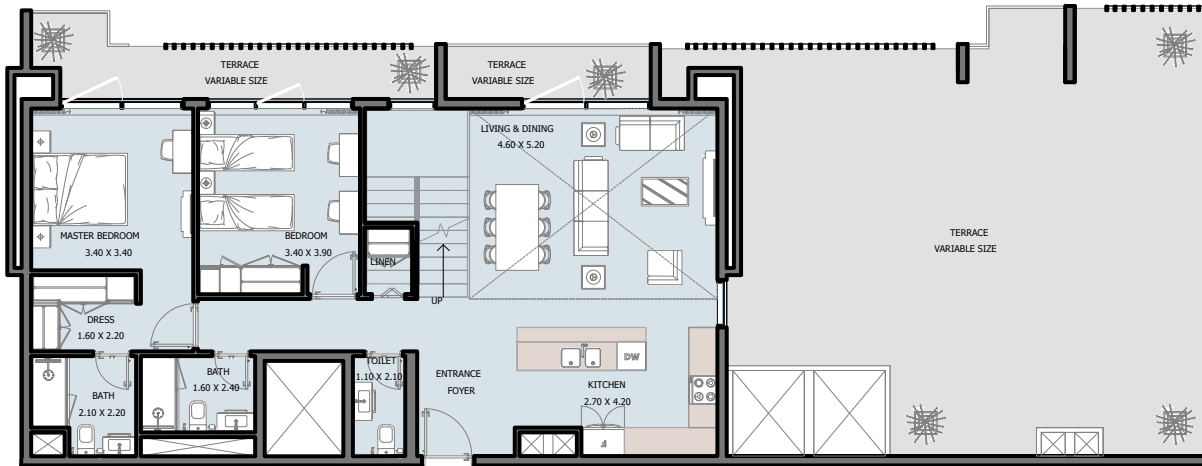
17<sup>th</sup> Floor



Internal Area	1988.20 to 2010.70 sq.ft
Outdoor Area	1188.01 to 2288.30 sq.ft
Total Area	3198.71 to 4276.50 sq.ft

# 4B | Penthouse Type C

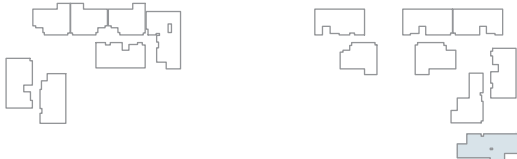
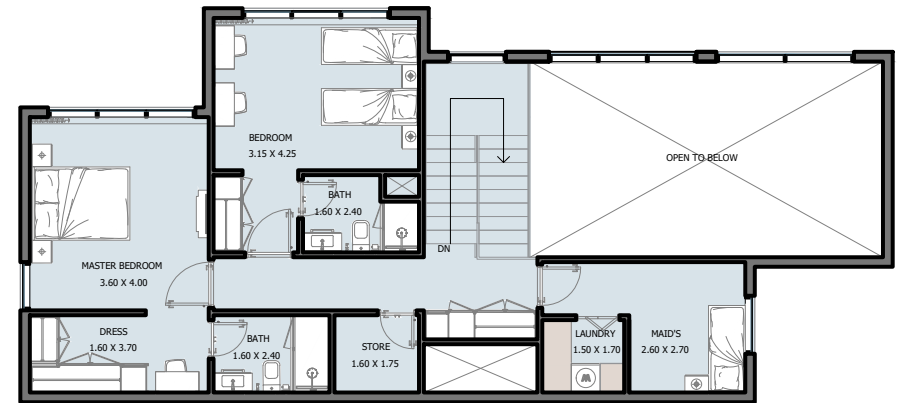
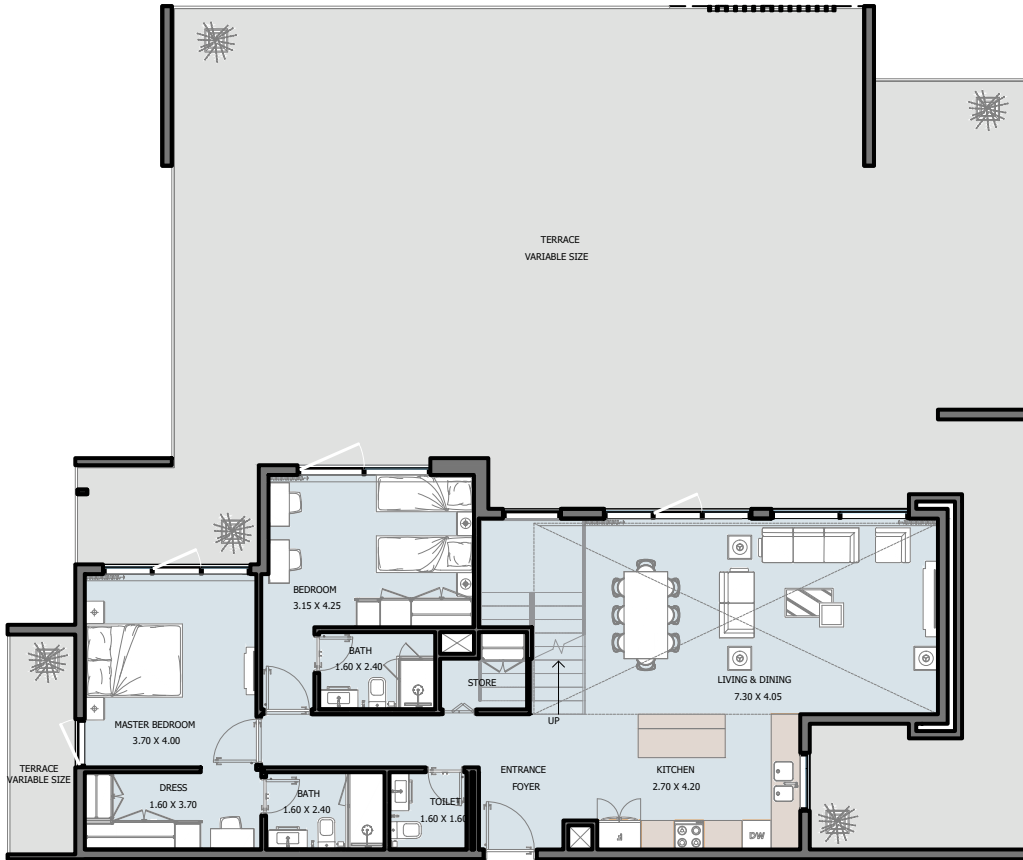
17<sup>th</sup> Floor



Internal Area	1899.72 to 1910.59 sq.ft
Outdoor Area	888.02 to 1048.30 sq.ft
Total Area	2798.61 to 2948.02 sq.ft

# 4B | Penthouse Type D

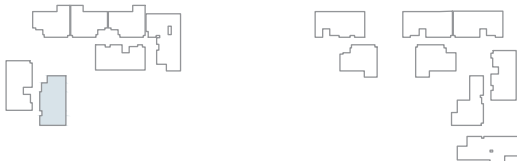
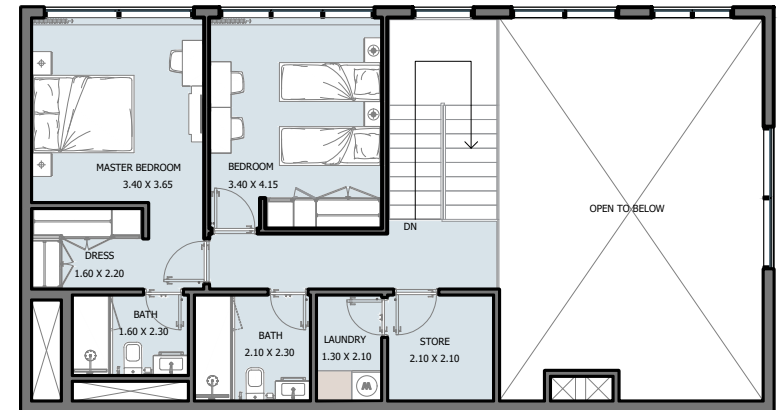
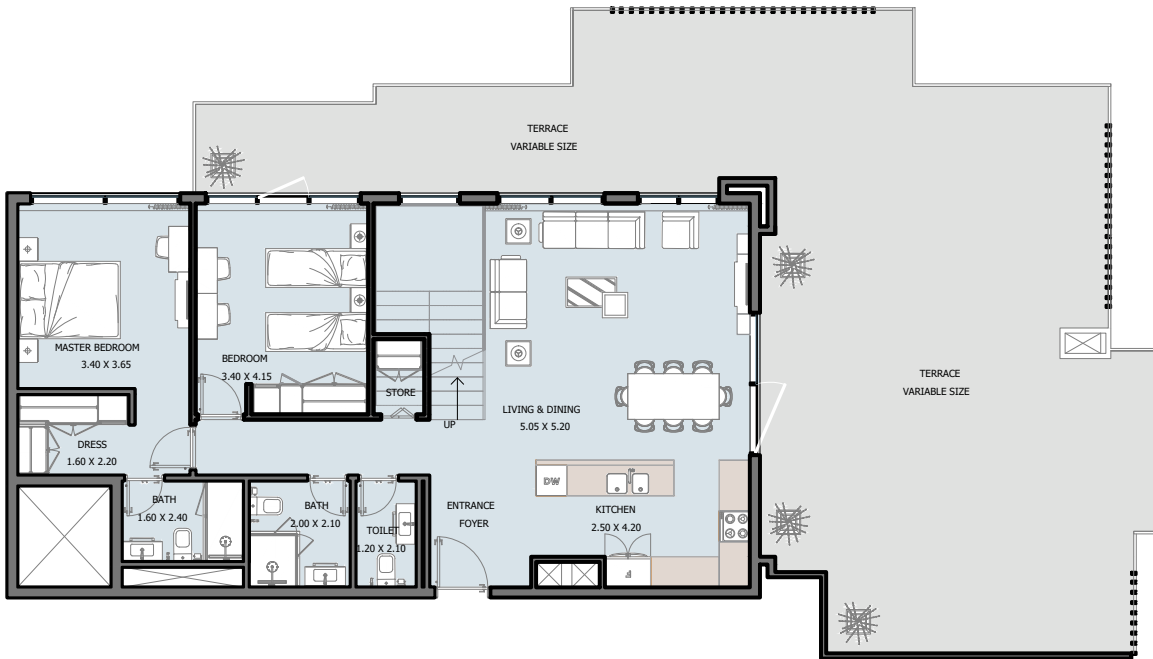
17<sup>th</sup> Floor



Internal Area	2036.64 sq.ft
Outdoor Area	2140.40 sq.ft
Total Area	4177.04 sq.ft

# 4B | Penthouse Type E

17<sup>th</sup> Floor

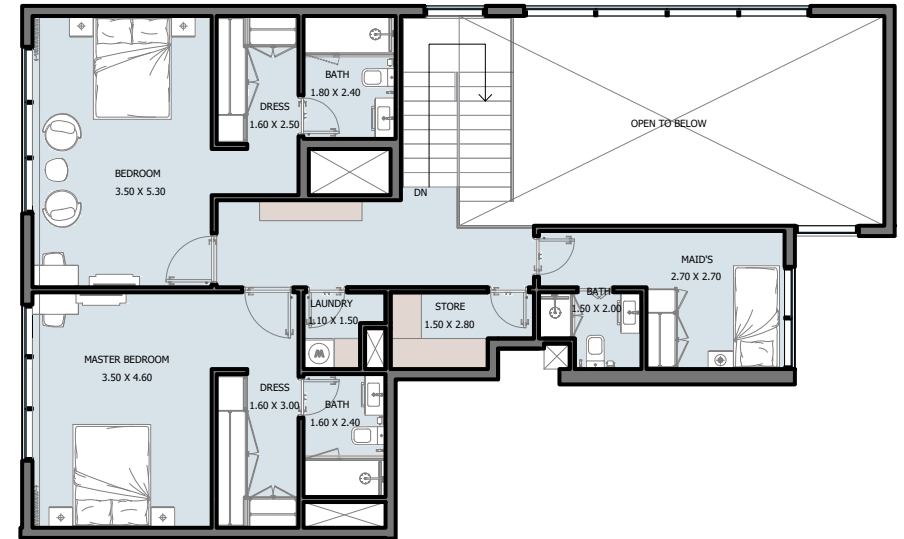
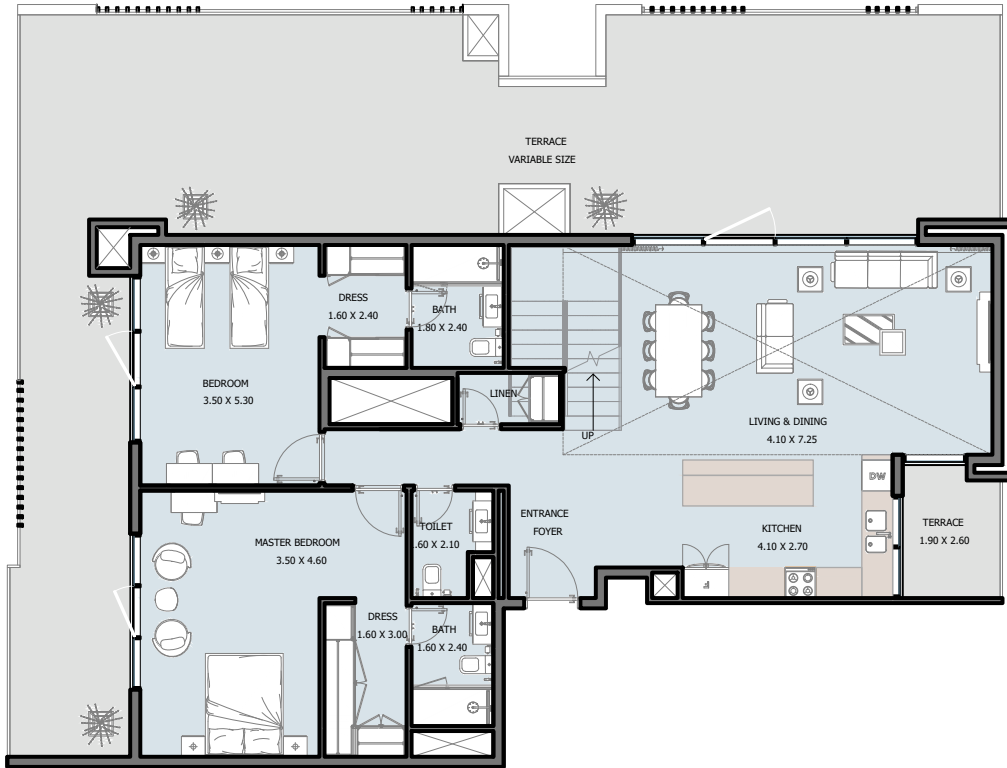


Internal Area	1810.17 sq.ft
Outdoor Area	1191.13 sq.ft
Total Area	3001.30 sq.ft



# 4B | Penthouse Type F

17<sup>th</sup> Floor



Internal Area	2395.18 sq.ft
Outdoor Area	1133.22 sq.ft
Total Area	3528.41 sq.ft



TOWNHOUSE  
**Selina** WEST

# 4B | TOWNHOUSE

## Ground Floor



Internal Area	1697.79 sq.ft
Outdoor Area	551.65 to 1080.05 sq.ft
Total Area	2247.50 to 2777.84 sq.ft

# ريپورتاج العقارية

# Reportage.

## Properties

### Abu Dhabi-UAE | Head Office

Tamouh Tower  
28<sup>th</sup> Floor, Al Reem Island  
P.O. Box: 111949  
Tollfree: +971 800 77 55 2  
info@reportageuae.com

### Dubai-UAE

Anantara Business Tower  
3<sup>rd</sup> Floor, Business Bay  
P.O. Box: 27446  
Tollfree: +971 800 77 55 2  
info@reportageuae.com

### Cairo-Egypt

Building 217  
North Teseen St.  
New Cairo  
T: +20 12 0008 1190  
info@reportageeg.com

### Istanbul-Türkiye

Levent, Tekfen Tower  
8<sup>th</sup> Floor, Office 31, Büyükdere St.  
P.O. Box 34394, Şişli  
T: +90 530 774 9595  
info@reportage.com.tr

### Riyadh-KSA

Building No. 3230  
Al Aflaj St., Al Suwaidi  
P.O. Box 12791  
T: +966 11 215 1110  
info@reportageuae.com

### Moscow-Russia

Yefremova Street 10s1, k4/4  
bld sadovye kvartaly  
P.O. Box 119048  
info@reportagerussia.com

---

For more information, visit [reportageuae.com](http://reportageuae.com)  
or call 800 77 55 2 | +971 50 244 1078

---



#### Legal Disclaimer:

The information contained in this brochure is confidential and is for the exclusive use of the recipient. This brochure may not be reproduced, distributed, delivered, or furnished to any person without the prior written approval of Reportage Properties. No representation or warranty (expressed or implied) is made or can be given with respect to the accuracy or completeness of the information herein, or that any future offer of units or apartments in the project will conform to the terms described herein. Nothing in this leaflet should be construed as financial, legal, tax or regulatory advice. All accessories such as electronics, furniture, white goods, decorative elements and so forth included in this brochure are not part of the standard unit and used for illustration purposes only. All plans, layouts, pictures, renderings, information and details included in this brochure are indicative only and may change at any time up to the final 'as built' status in accordance with final designs of the project and regulatory approvals and planning permissions.

**R.**