

Fairmont

RESIDENCES
DUBAI SKYLINE

FLOOR PLANS



Disclaimer:
1. All materials, finishes, dimensions and drawings are approximate.
2. Information is subject to change without notice.
3. Actual suite area may vary from the stated area.
4. Drawings are not to scale.
5. The Developer reserves the right to make revisions/alterations without any liability whatsoever.



2 BEDROOM APARTMENT

Disclaimer:
1. All materials, finishes, dimensions and drawings are approximate.
2. Information is subject to change without notice.
3. Actual suite area may vary from the stated area.
4. Drawings are not to scale.
5. The Developer reserves the right to make revisions/alterations without any liability whatsoever.

The project is registered as 'Sabah Dubai Skyline' in Dubai Land Department (registration no. 2573).



2 BEDROOM APARTMENT

Disclaimer:
1. All materials, finishes, dimensions and drawings are approximate.
2. Information is subject to change without notice.
3. Actual suite area may vary from the stated area.
4. Drawings are not to scale.
5. The Developer reserves the right to make revisions/alterations without any liability whatsoever.

The project is registered as 'Sabah Dubai Skyline' in Dubai Land Department (registration no. 2573).



2 BEDROOM APARTMENT

Disclaimer:
1. All materials, finishes, dimensions and drawings are approximate.
2. Information is subject to change without notice.
3. Actual suite area may vary from the stated area.
4. Drawings are not to scale.
5. The Developer reserves the right to make revisions/alterations without any liability whatsoever.

The project is registered as 'Sabah Dubai Skyline' in Dubai Land Department (registration no. 2573).

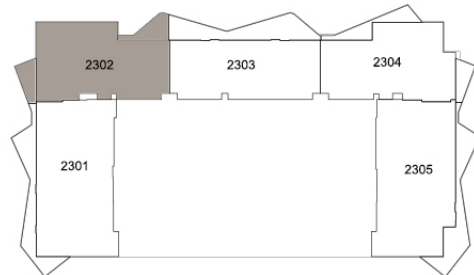
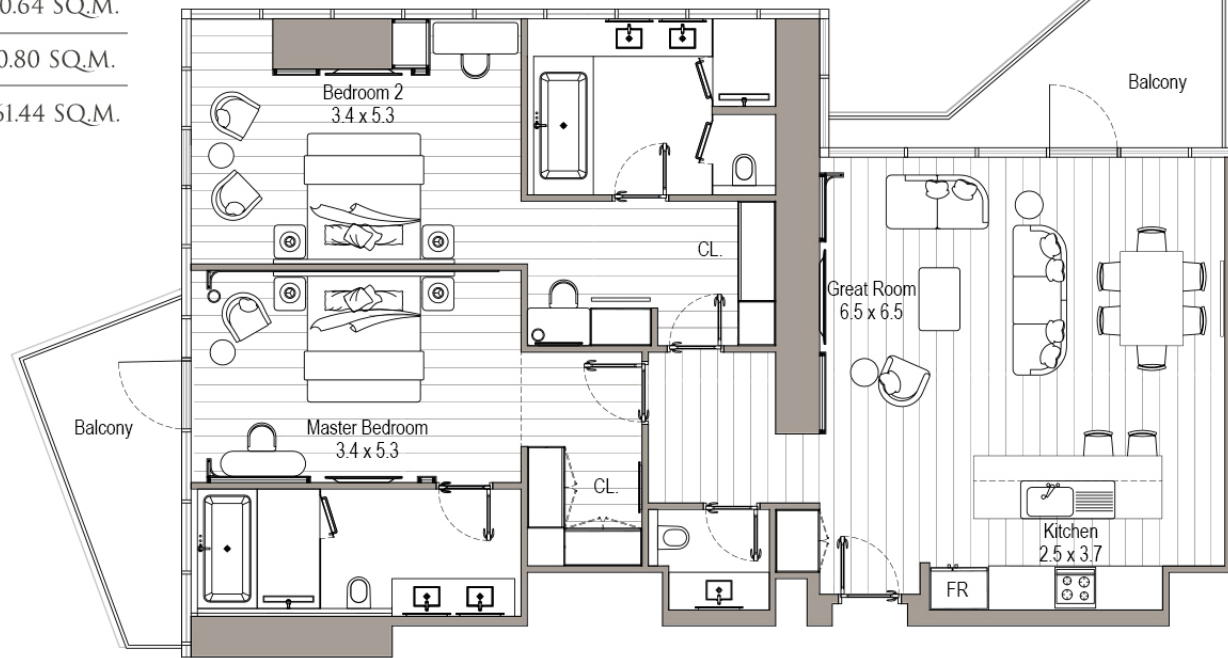
APARTMENT
2 BEDROOMS
UNIT 02 | LEVEL 23

SUITE AREA	1513.84 SQ.FT.	140.64 SQ.M.
BALCONY AREA	223.89 SQ.FT.	20.80 SQ.M.
TOTAL AREA	1737.73 SQ.FT.	161.44 SQ.M.

← BURJ AL ARAB

BURJ KHALIFA
↑

SEA, PALM JUMEIRAH
←



Disclaimer:
1. All materials, finishes, dimensions and drawings are approximate.
2. Information is subject to change without notice.
3. Actual suite area may vary from the stated area.
4. Drawings are not to scale.
5. The Developer reserves the right to make revisions/alterations without any liability whatsoever.

APARTMENT 2 BEDROOMS

UNIT 03 | LEVEL 23



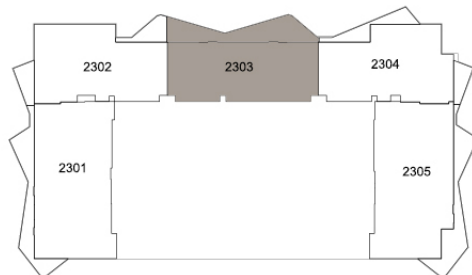
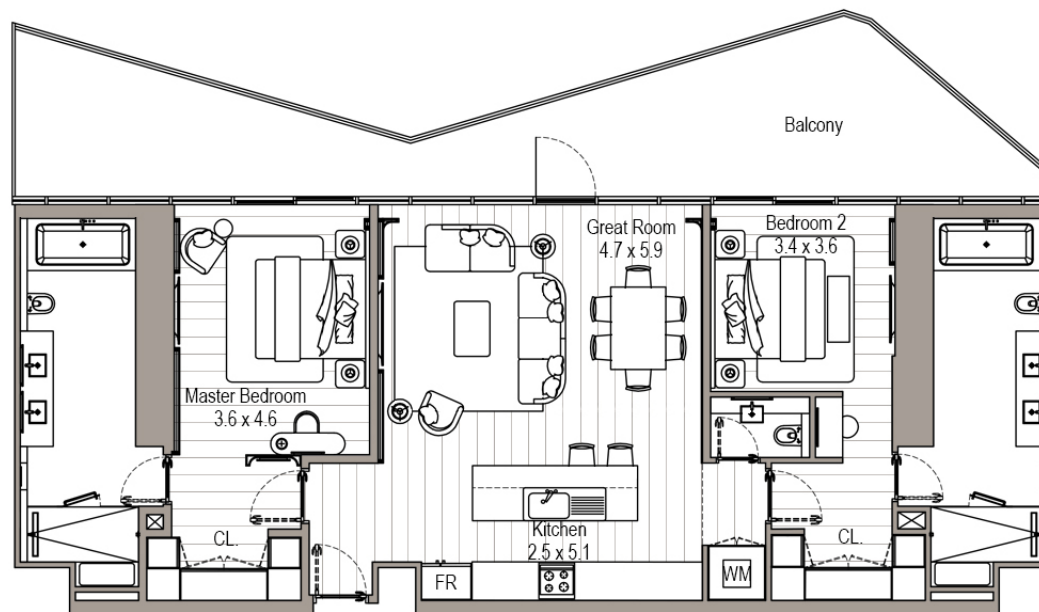
← SEA & BURJ AL ARAB



BURJ KHALIFA



SUITE AREA	1468.09 SQ.FT.	136.39 SQ.M.
BALCONY AREA	435.51 SQ.FT.	40.46 SQ.M.
TOTAL AREA	1903.60 SQ.FT.	176.85 SQ.M.



Disclaimer:
1. All materials, finishes, dimensions and drawings are approximate.
2. Information is subject to change without notice.
3. Actual suite area may vary from the stated area.
4. Drawings are not to scale.
5. The Developer reserves the right to make revisions/alterations without any liability whatsoever.

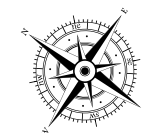
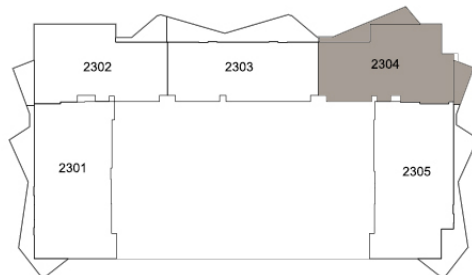
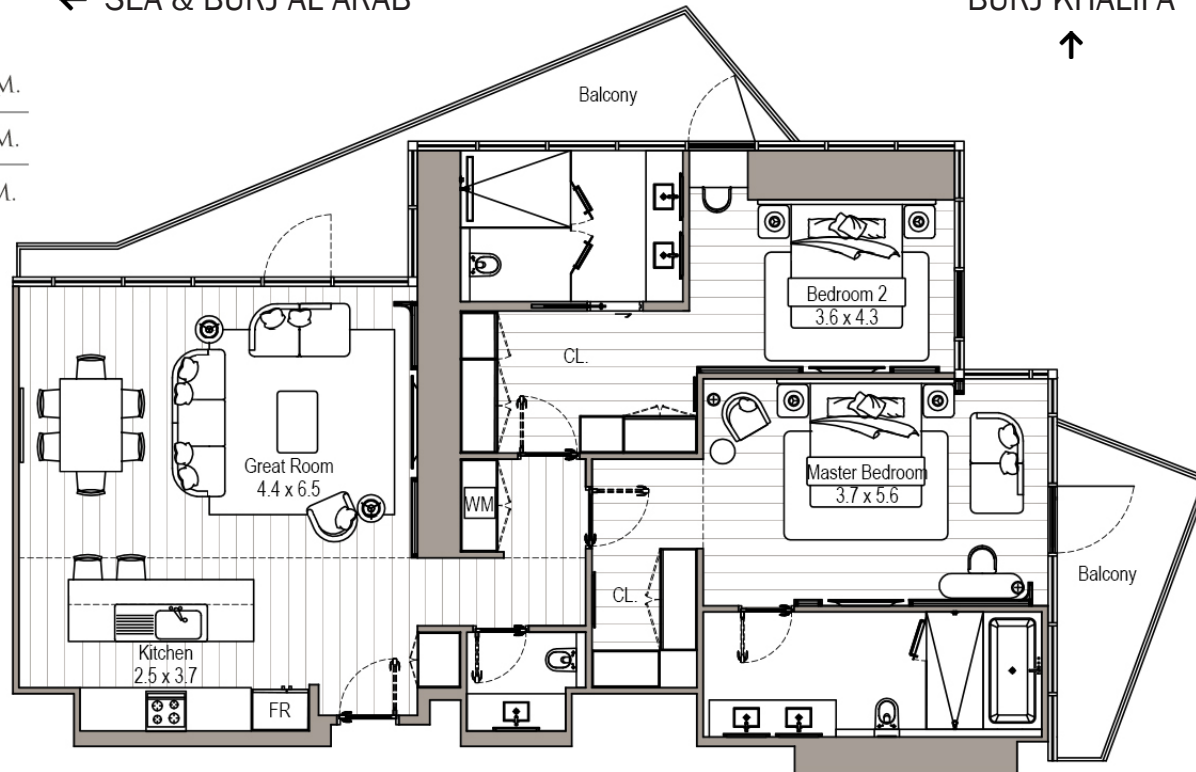
APARTMENT 2 BEDROOMS

UNIT 04 | LEVEL 23

← SEA & BURJ AL ARAB

BURJ KHALIFA
↑

SUITE AREA	1468.95 SQ.FT.	136.47 SQ.M.
BALCONY AREA	276.52 SQ.FT.	25.69 SQ.M.
TOTAL AREA	1745.48 SQ.FT.	162.16 SQ.M.



Disclaimer:
1. All materials, finishes, dimensions and drawings are approximate.
2. Information is subject to change without notice.
3. Actual suite area may vary from the stated area.
4. Drawings are not to scale.
5. The Developer reserves the right to make revisions/alterations without any liability whatsoever.

APARTMENT 2 BEDROOMS

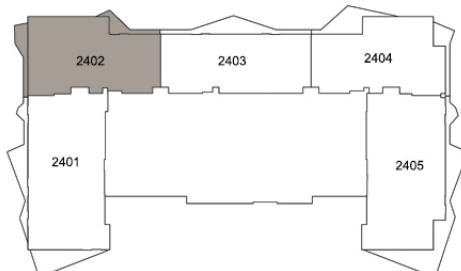
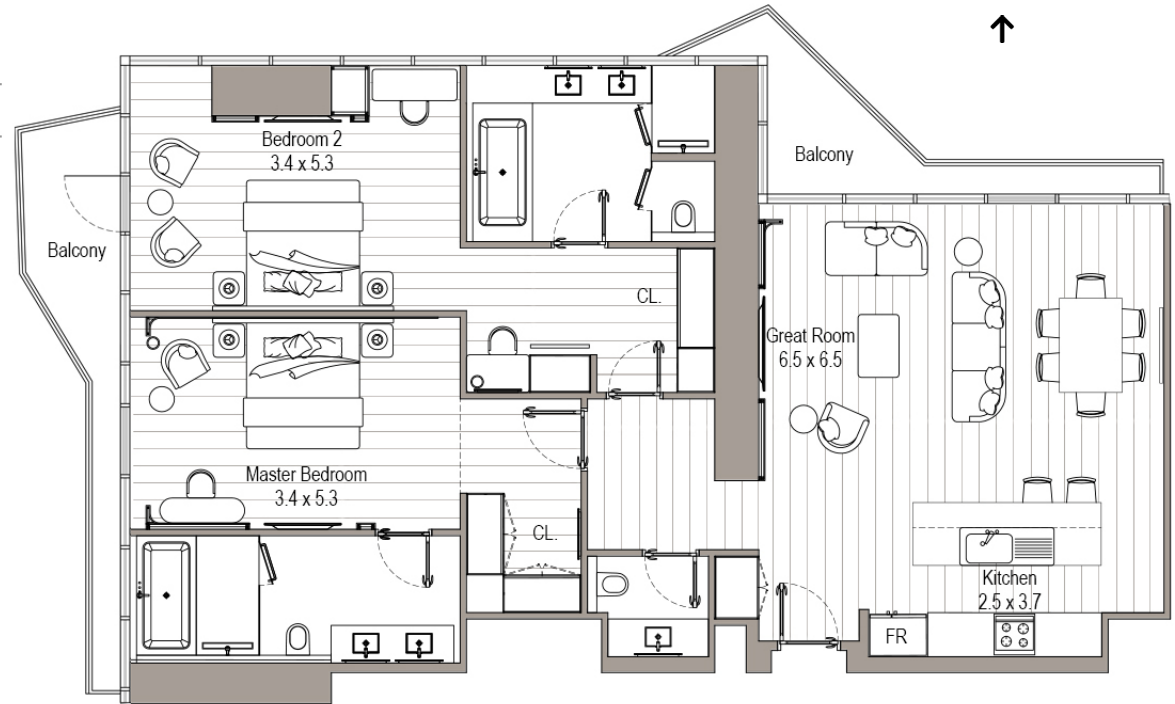
UNIT 02 | LEVEL 24

SUITE AREA	1516.20 SQ.FT.	140.86 SQ.M.
BALCONY AREA	181.91 SQ.FT.	16.90 SQ.M.
TOTAL AREA	1698.11 SQ.FT.	157.76 SQ.M.

← BURJ AL ARAB

BURJ KHALIFA
↑

SEA, PALM JUMEIRAH
↑



Disclaimer:
1. All materials, finishes, dimensions and drawings are approximate.
2. Information is subject to change without notice.
3. Actual suite area may vary from the stated area.
4. Drawings are not to scale.
5. The Developer reserves the right to make revisions/alterations without any liability whatsoever.

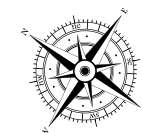
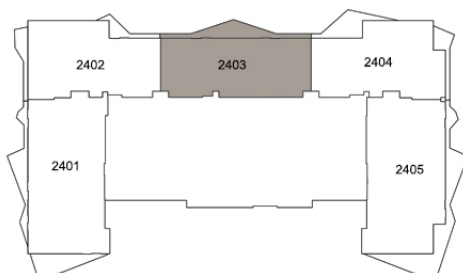
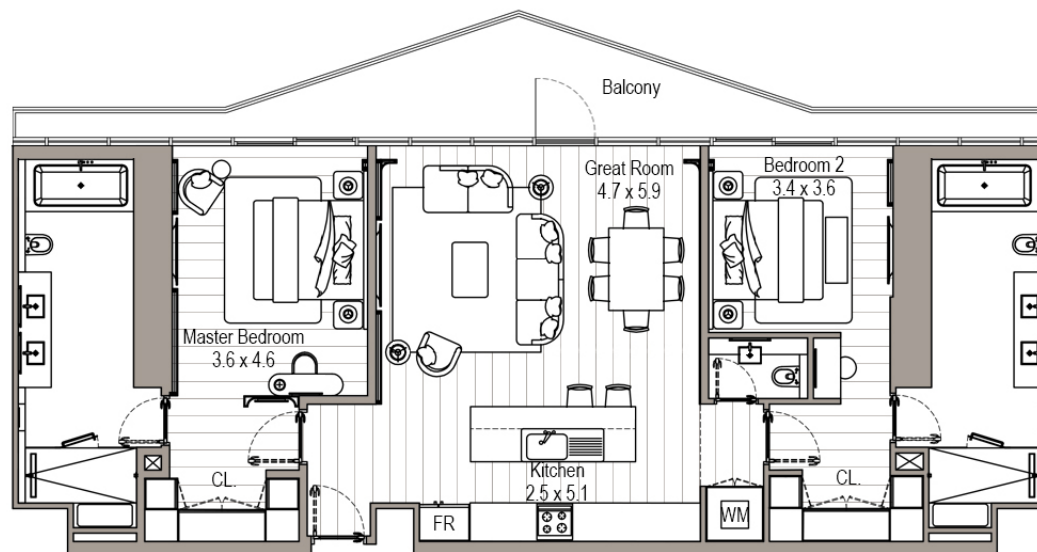
APARTMENT 2 BEDROOMS

UNIT 03 | LEVEL 24

← SEA & BURJ AL ARAB

BURJ KHALIFA
↑

SUITE AREA	1467.98 SQ.FT.	136.38 SQ.M.
BALCONY AREA	213.13 SQ.FT.	19.80 SQ.M.
TOTAL AREA	1681.11 SQ.FT.	156.18 SQ.M.



Disclaimer:
1. All materials, finishes, dimensions and drawings are approximate.
2. Information is subject to change without notice.
3. Actual suite area may vary from the stated area.
4. Drawings are not to scale.
5. The Developer reserves the right to make revisions/alterations without any liability whatsoever.

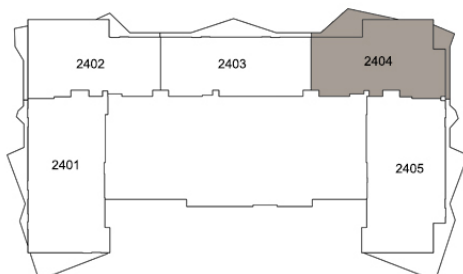
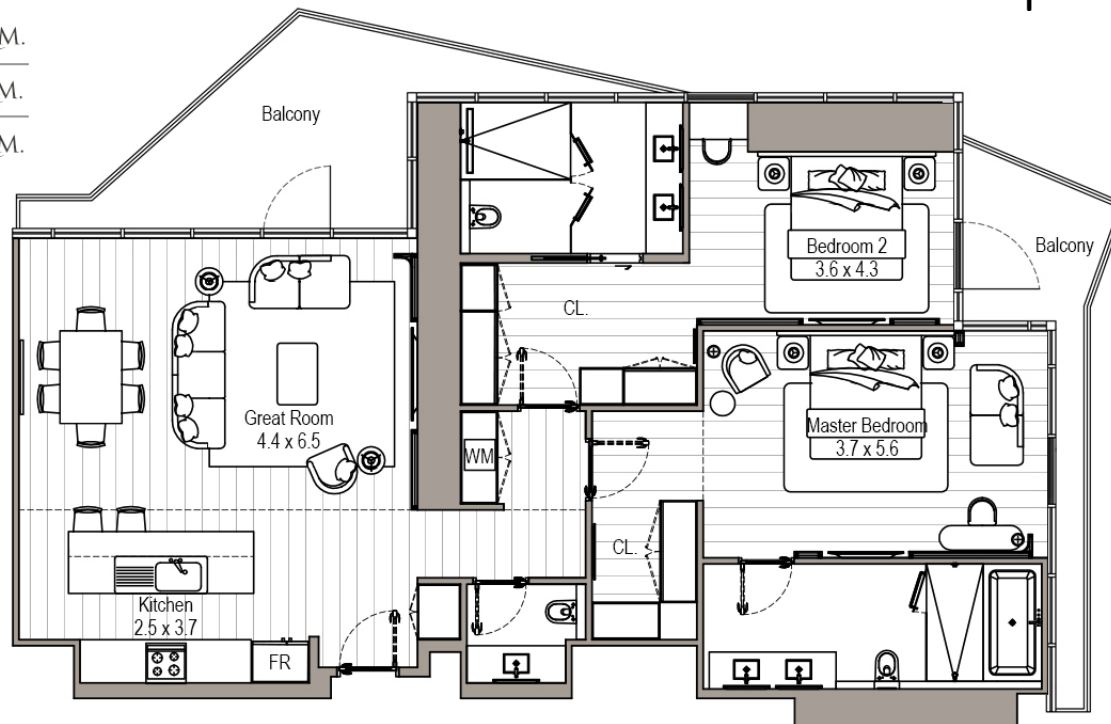
APARTMENT 2 BEDROOMS

UNIT 04 | LEVEL 24

← SEA & BURJ AL ARAB

BURJ KHALIFA
↑

SUITE AREA	1468.84 SQ.FT.	136.46 SQ.M.
BALCONY AREA	282.45 SQ.FT.	26.24 SQ.M.
TOTAL AREA	1751.29 SQ.FT.	162.70 SQ.M.



Disclaimer:
1. All materials, finishes, dimensions and drawings are approximate.
2. Information is subject to change without notice.
3. Actual suite area may vary from the stated area.
4. Drawings are not to scale.
5. The Developer reserves the right to make revisions/alterations without any liability whatsoever.

APARTMENT 2 BEDROOMS

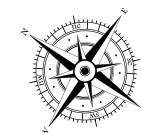
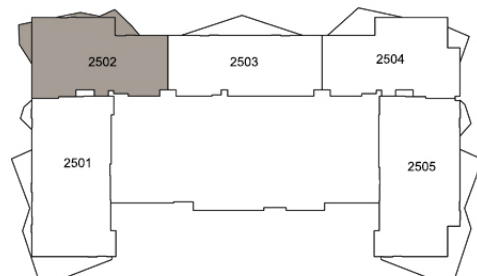
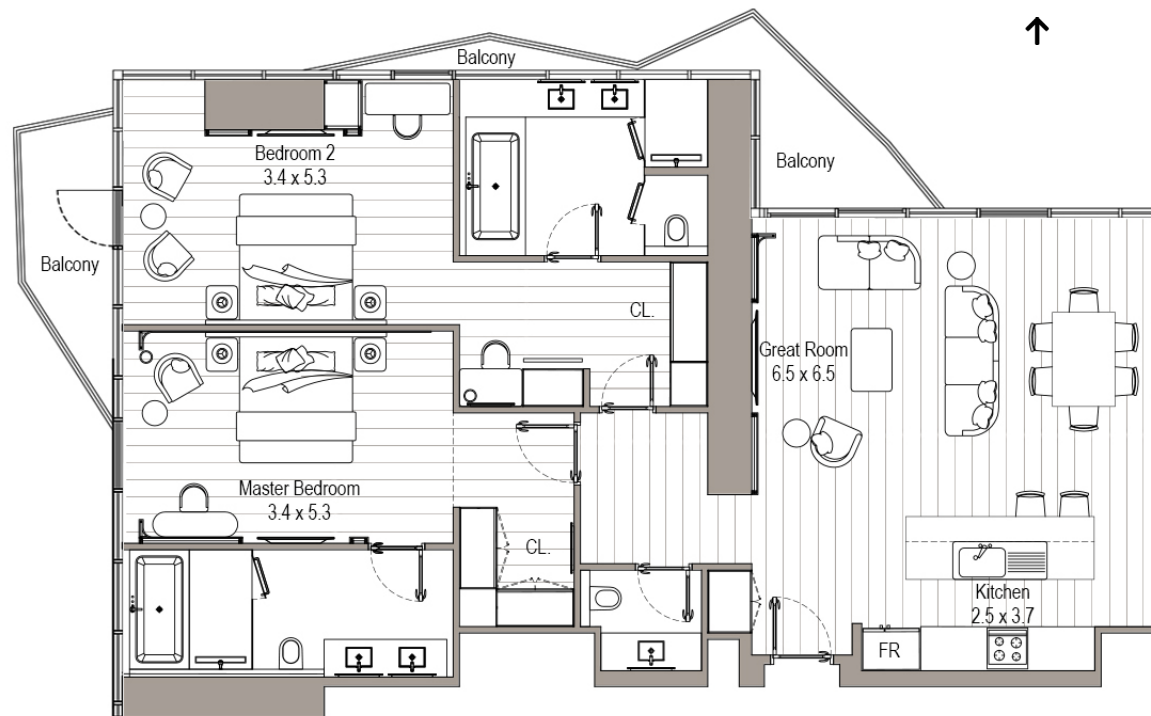
UNIT 02 | LEVEL 25

SUITE AREA	1516.20 SQ.FT.	140.86 SQ.M.
BALCONY AREA	153.71 SQ.FT.	14.28 SQ.M.
TOTAL AREA	1669.91 SQ.FT.	155.14 SQ.M.

← BURJ AL ARAB

BURJ KHALIFA
↑

SEA, PALM JUMEIRAH
↑



Disclaimer:
1. All materials, finishes, dimensions and drawings are approximate.
2. Information is subject to change without notice.
3. Actual suite area may vary from the stated area.
4. Drawings are not to scale.
5. The Developer reserves the right to make revisions/alterations without any liability whatsoever.

APARTMENT 2 BEDROOMS

UNIT 03 | LEVEL 25



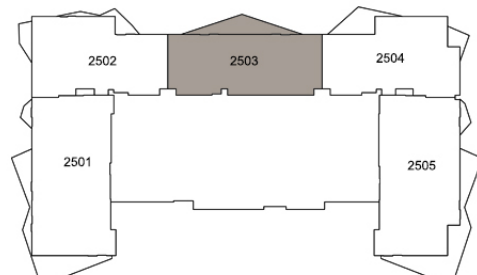
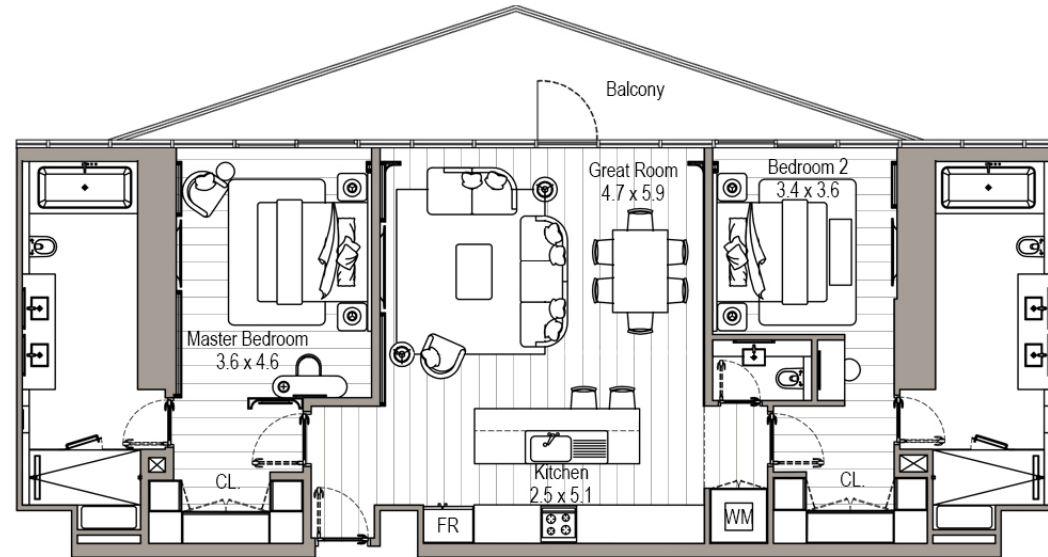
← SEA & BURJ AL ARAB



BURJ KHALIFA



SUITE AREA	1468.09 SQ.FT.	136.39 SQ.M.
BALCONY AREA	194.83 SQ.FT.	18.10 SQ.M.
TOTAL AREA	1662.92 SQ.FT.	154.49 SQ.M.



Disclaimer:
 1. All materials, finishes, dimensions and drawings are approximate.
 2. Information is subject to change without notice.
 3. Actual suite area may vary from the stated area.
 4. Drawings are not to scale.
 5. The Developer reserves the right to make revisions/alterations without any liability whatsoever.

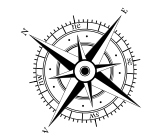
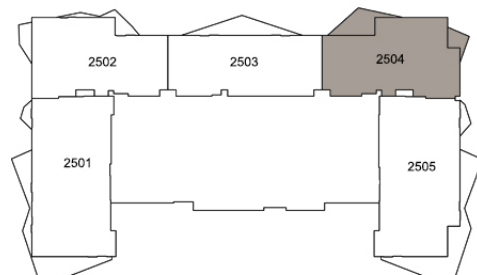
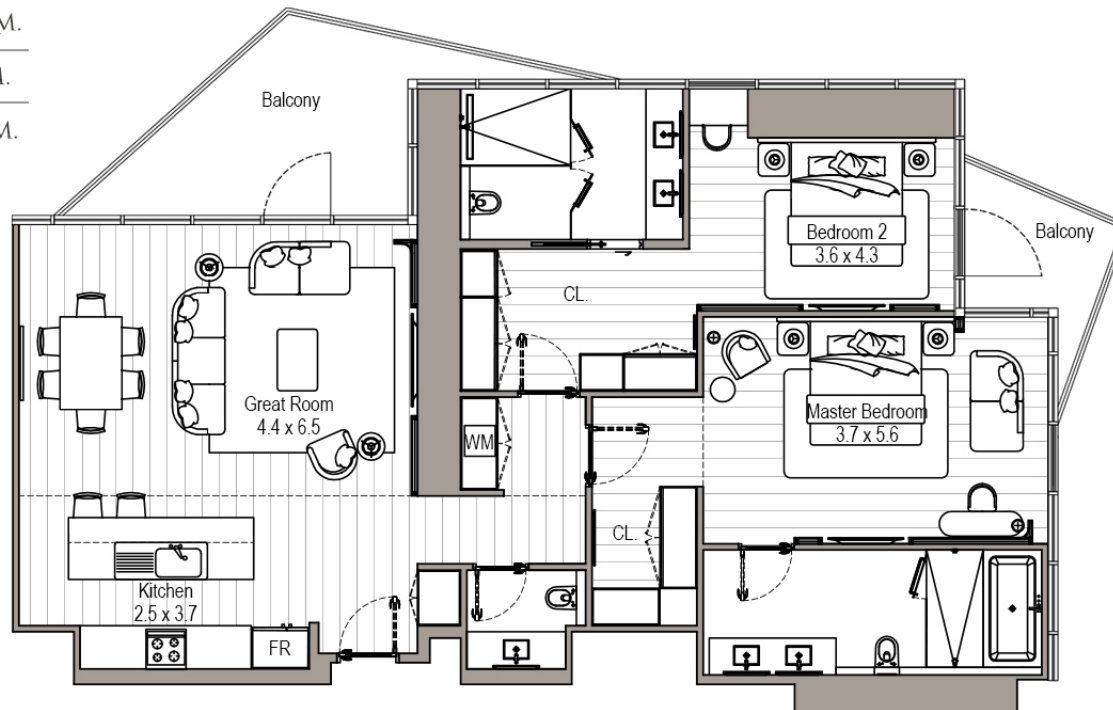
APARTMENT 2 BEDROOMS

UNIT 04 | LEVEL 25

← SEA & BURJ AL ARAB

BURJ KHALIFA
↑

SUITE AREA	1472.93 SQ.FT.	136.84 SQ.M.
BALCONY AREA	217.11 SQ.FT.	20.17 SQ.M.
TOTAL AREA	1690.04 SQ.FT.	157.01 SQ.M.

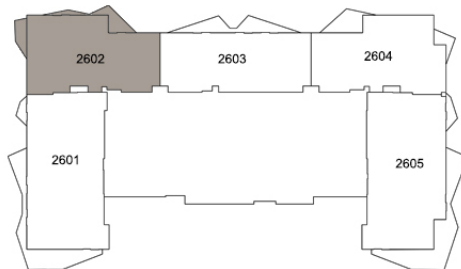
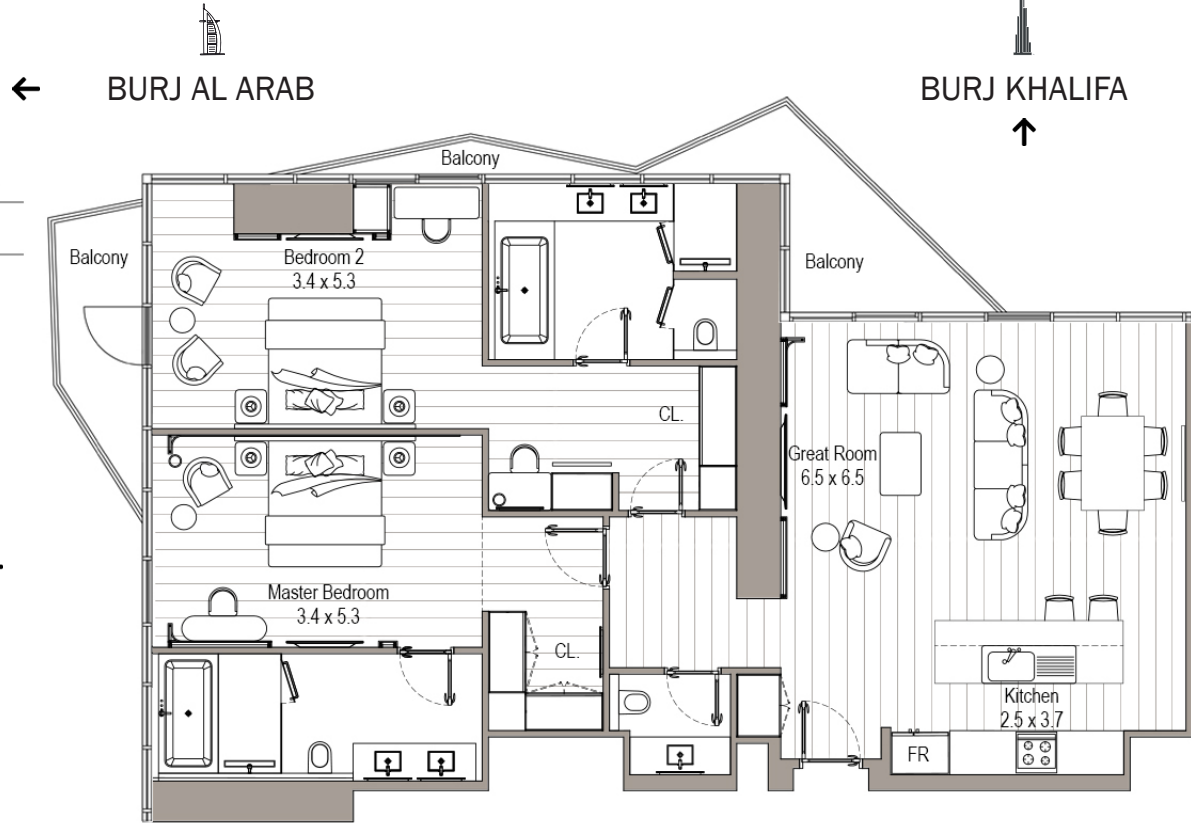


Disclaimer:
1. All materials, finishes, dimensions and drawings are approximate.
2. Information is subject to change without notice.
3. Actual suite area may vary from the stated area.
4. Drawings are not to scale.
5. The Developer reserves the right to make revisions/alterations without any liability whatsoever.

APARTMENT
2 BEDROOMS
UNIT 02 | LEVEL 26

SUITE AREA	1515.31 SQ.FT.	140.87 SQ.M.
BALCONY AREA	176.44 SQ.FT.	16.41 SQ.M.
TOTAL AREA	1692.95 SQ.FT.	157.28 SQ.M.

SEA, PALM JUMEIRAH



Disclaimer:
1. All materials, finishes, dimensions and drawings are approximate.
2. Information is subject to change without notice.
3. Actual suite area may vary from the stated area.
4. Drawings are not to scale.
5. The Developer reserves the right to make revisions/alterations without any liability whatsoever.

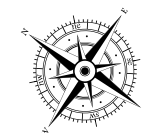
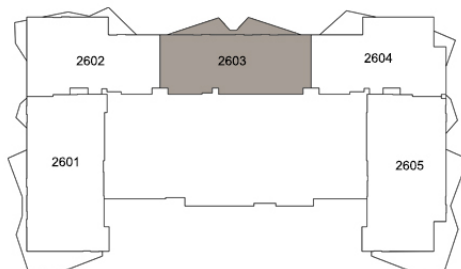
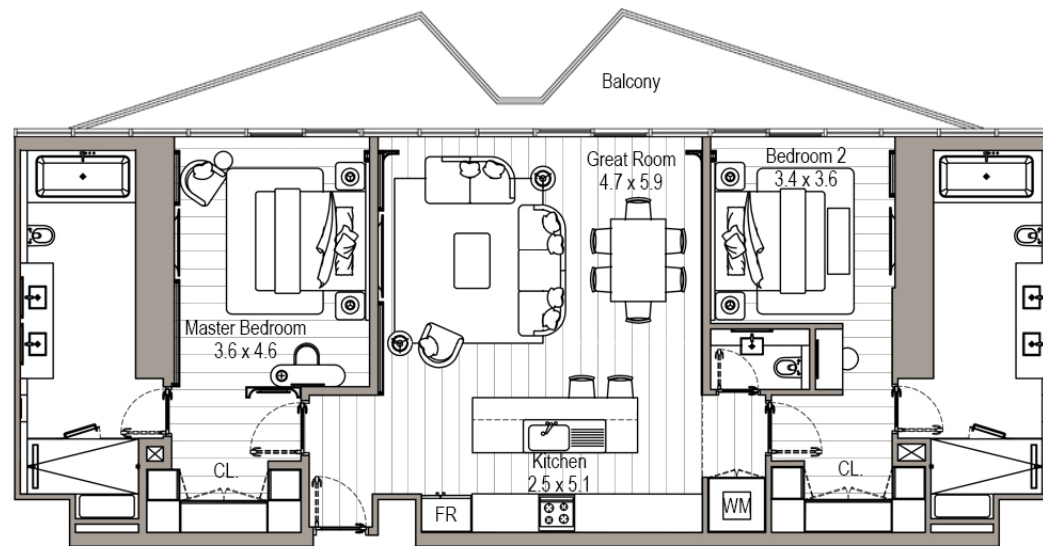
APARTMENT 2 BEDROOMS

UNIT 03 | LEVEL 26

← SEA & BURJ AL ARAB

BURJ KHALIFA
↑

SUITE AREA	1468.09 SQ.FT.	136.39 SQ.M.
BALCONY AREA	196.12 SQ.FT.	18.22 SQ.M.
TOTAL AREA	1664.21 SQ.FT.	154.61 SQ.M.



Disclaimer:
1. All materials, finishes, dimensions and drawings are approximate.
2. Information is subject to change without notice.
3. Actual suite area may vary from the stated area.
4. Drawings are not to scale.
5. The Developer reserves the right to make revisions/alterations without any liability whatsoever.

APARTMENT 2 BEDROOMS

UNIT 04 | LEVEL 26



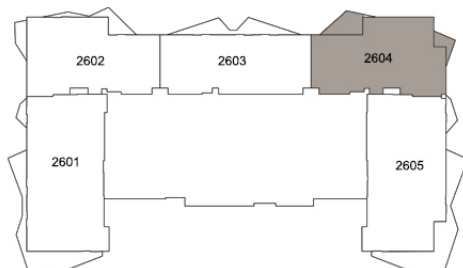
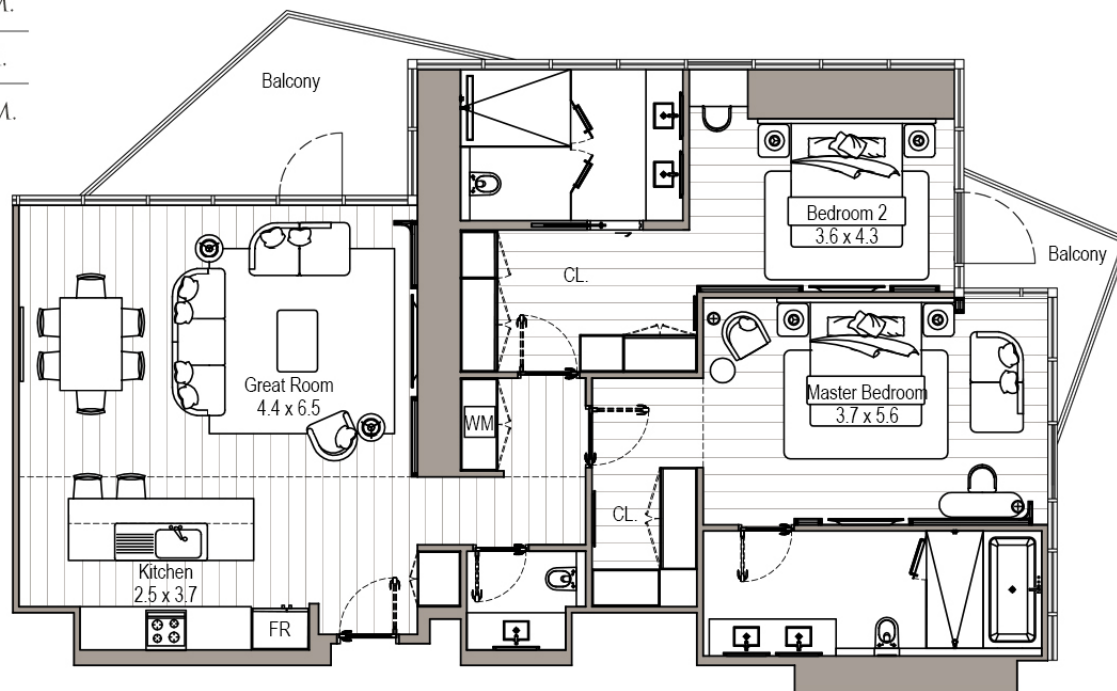
← SEA & BURJ AL ARAB



BURJ KHALIFA



SUITE AREA	1472.93 SQ.FT.	136.84 SQ.M.
BALCONY AREA	177.60 SQ.FT.	16.50 SQ.M.
TOTAL AREA	1650.54 SQ.FT.	153.34 SQ.M.



Disclaimer:
 1. All materials, finishes, dimensions and drawings are approximate.
 2. Information is subject to change without notice.
 3. Actual suite area may vary from the stated area.
 4. Drawings are not to scale.
 5. The Developer reserves the right to make revisions/alterations without any liability whatsoever.

APARTMENT 2 BEDROOMS

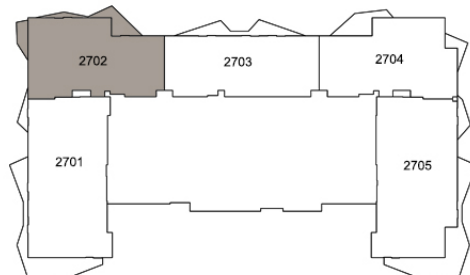
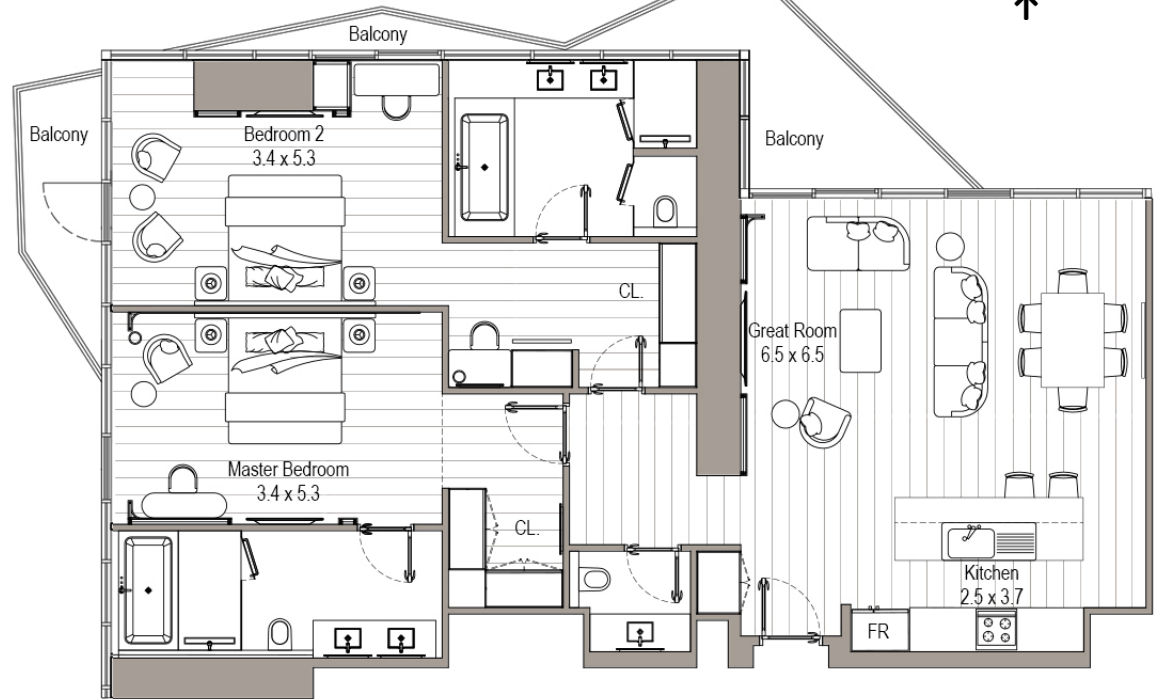
UNIT 02 | LEVEL 27

SUITE AREA	1516.20 SQ.FT.	140.86 SQ.M.
BALCONY AREA	195.80 SQ.FT.	18.19 SQ.M.
TOTAL AREA	1712.00 SQ.FT.	159.05 SQ.M.

← BURJ AL ARAB

BURJ KHALIFA
↑

← SEA, PALM JUMEIRAH



Disclaimer:
1. All materials, finishes, dimensions and drawings are approximate.
2. Information is subject to change without notice.
3. Actual suite area may vary from the stated area.
4. Drawings are not to scale.
5. The Developer reserves the right to make revisions/alterations without any liability whatsoever.

APARTMENT 2 BEDROOMS

UNIT 03 | LEVEL 27



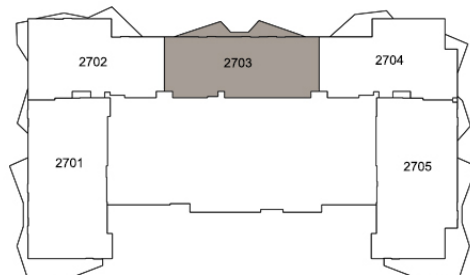
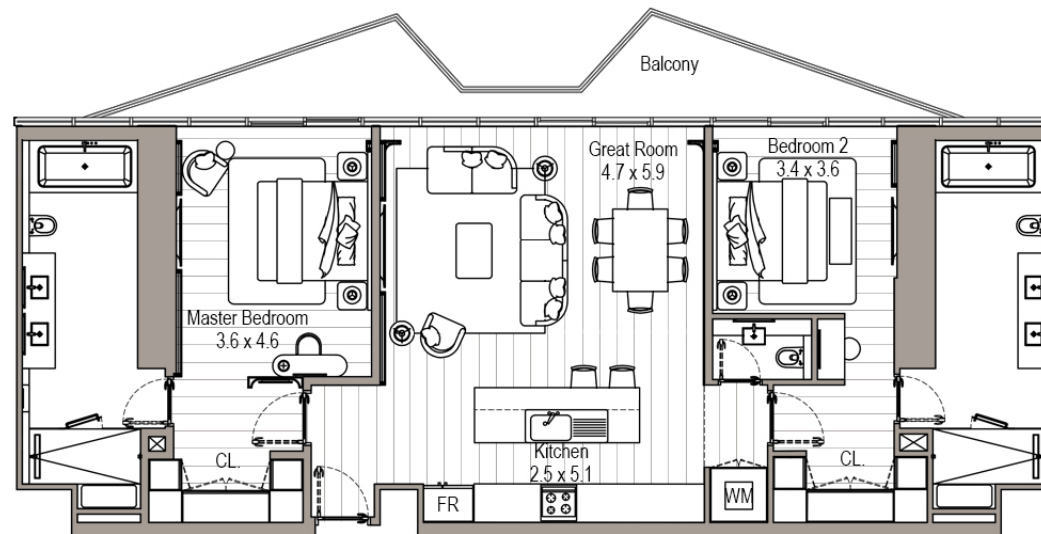
← SEA & BURJ AL ARAB



BURJ KHALIFA



SUITE AREA	1467.98 SQ.FT.	136.38 SQ.M.
BALCONY AREA	153.61 SQ.FT.	15.20 SQ.M.
TOTAL AREA	1631.59 SQ.FT.	151.58 SQ.M.



Disclaimer:
 1. All materials, finishes, dimensions and drawings are approximate.
 2. Information is subject to change without notice.
 3. Actual suite area may vary from the stated area.
 4. Drawings are not to scale.
 5. The Developer reserves the right to make revisions/alterations without any liability whatsoever.

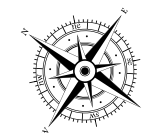
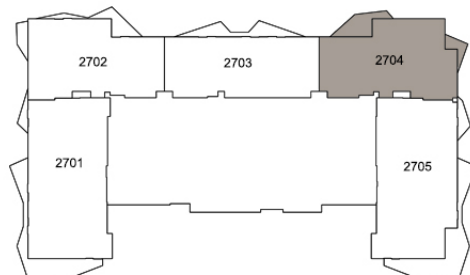
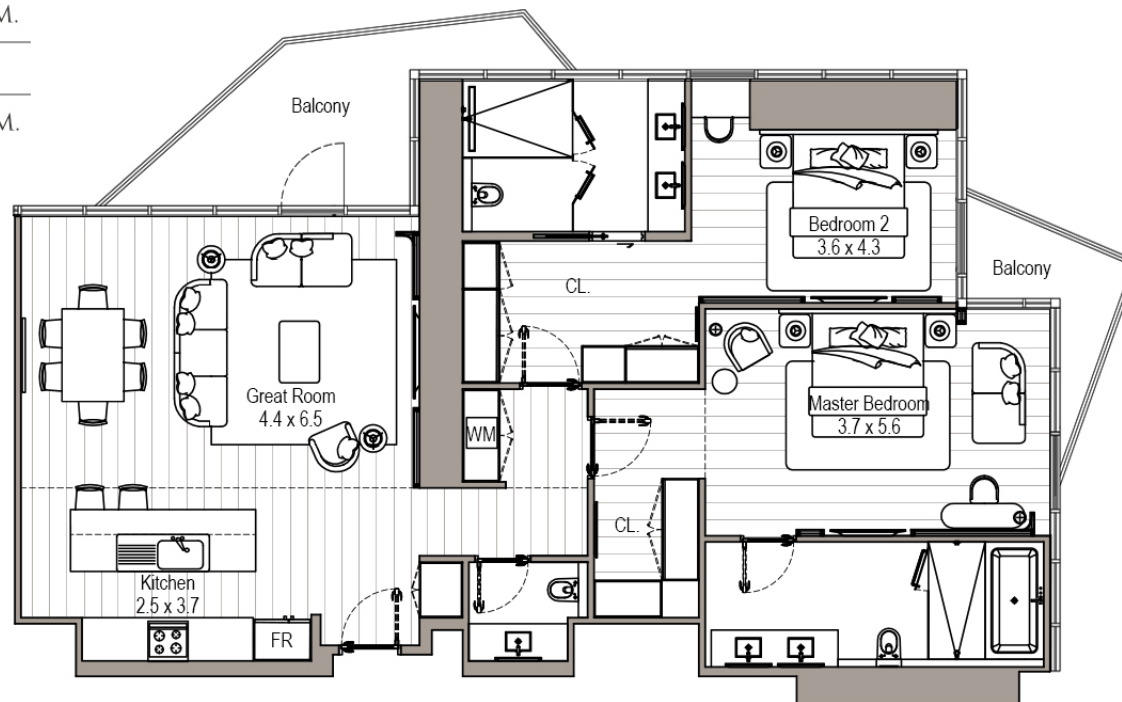
APARTMENT 2 BEDROOMS

UNIT 04 | LEVEL 27

← SEA & BURJ AL ARAB

BURJ KHALIFA
↑

SUITE AREA	1473.15 SQ.FT.	136.86 SQ.M.
BALCONY AREA	191.27 SQ.FT.	17.7 SQ.M.
TOTAL AREA	1664.42 SQ.FT.	154.63 SQ.M.



Disclaimer:
1. All materials, finishes, dimensions and drawings are approximate.
2. Information is subject to change without notice.
3. Actual suite area may vary from the stated area.
4. Drawings are not to scale.
5. The Developer reserves the right to make revisions/alterations without any liability whatsoever.



3 BEDROOM APARTMENT

Disclaimer:
1. All materials, finishes, dimensions and drawings are approximate.
2. Information is subject to change without notice.
3. Actual suite area may vary from the stated area.
4. Drawings are not to scale.
5. The Developer reserves the right to make revisions/alterations without any liability whatsoever.

The project is registered as 'Sabah Dubai Skyline' in Dubai Land Department (registration no. 2573).



3 BEDROOM APARTMENT

Disclaimer:
1. All materials, finishes, dimensions and drawings are approximate.
2. Information is subject to change without notice.
3. Actual suite area may vary from the stated area.
4. Drawings are not to scale.
5. The Developer reserves the right to make revisions/alterations without any liability whatsoever.

The project is registered as 'Sabah Dubai Skyline' in Dubai Land Department (registration no. 2573).



3 BEDROOM APARTMENT

Disclaimer:
1. All materials, finishes, dimensions and drawings are approximate.
2. Information is subject to change without notice.
3. Actual suite area may vary from the stated area.
4. Drawings are not to scale.
5. The Developer reserves the right to make revisions/alterations without any liability whatsoever.

The project is registered as 'Sabah Dubai Skyline' in Dubai Land Department (registration no. 2573).

APARTMENT 3 BEDROOMS

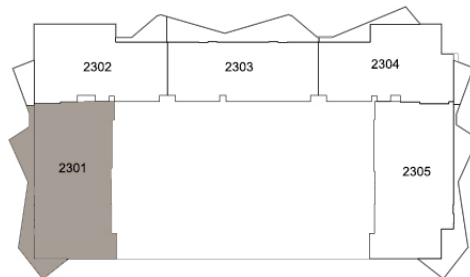
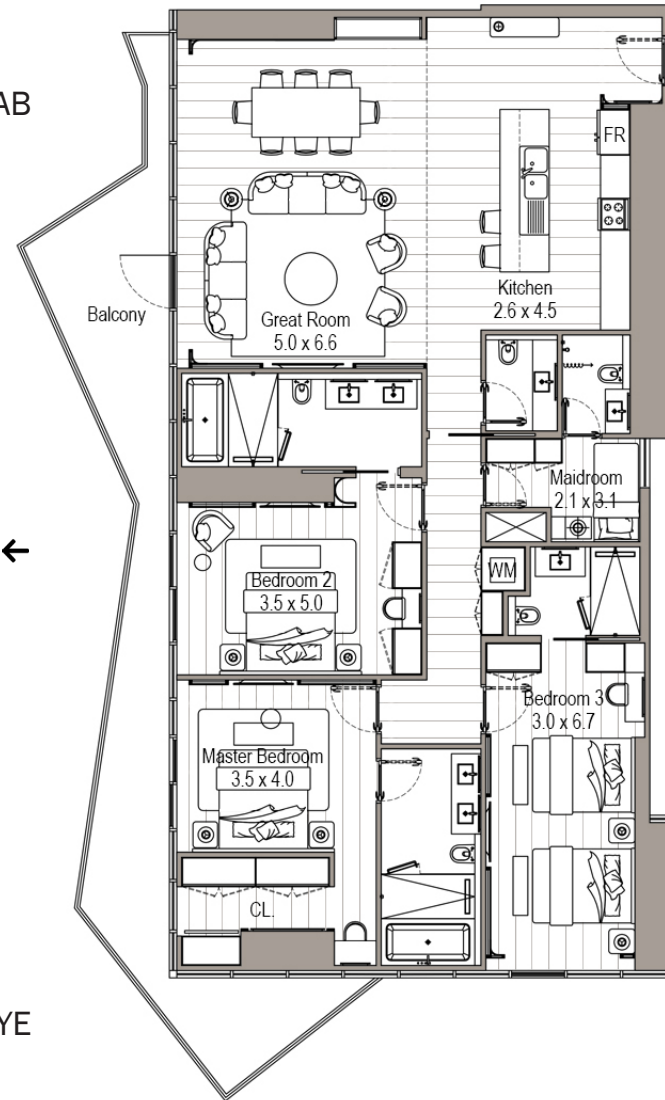
UNIT 01 | LEVEL 23

SUITE AREA	2003.81 SQ.FT.	186.16 SQ.M.
BALCONY AREA	375.23 SQ.FT.	34.86 SQ.M.
TOTAL AREA	2379.04 SQ.FT.	221.02 SQ.M.

← BURJ AL ARAB

← SEA, PALM JUMEIRAH

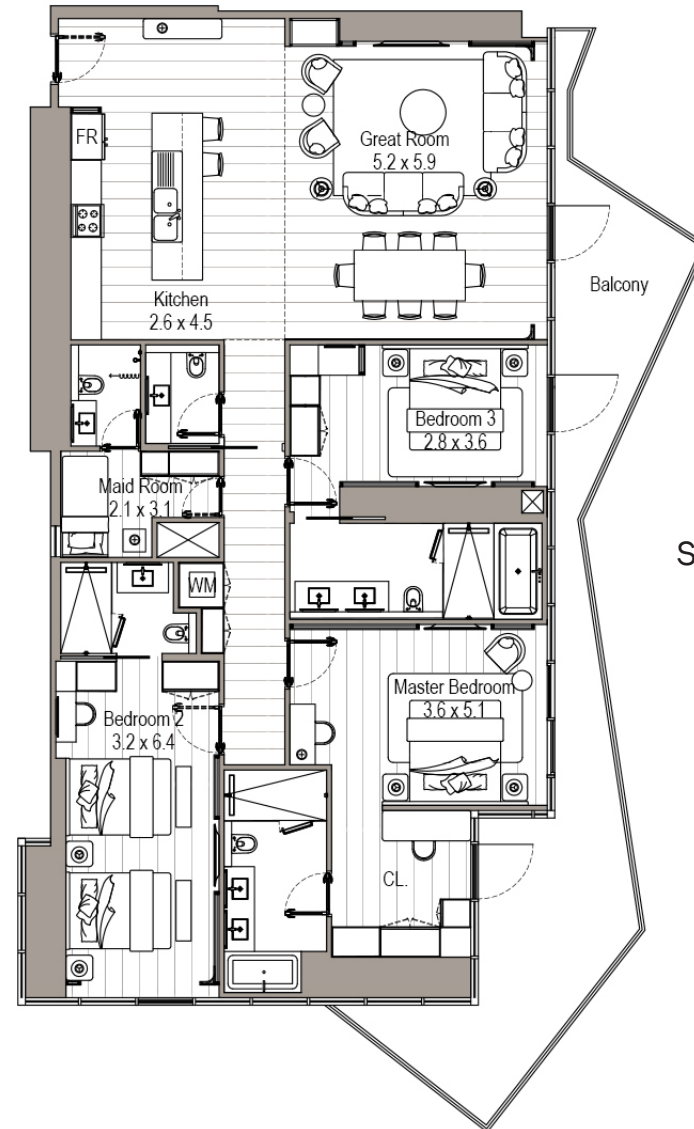
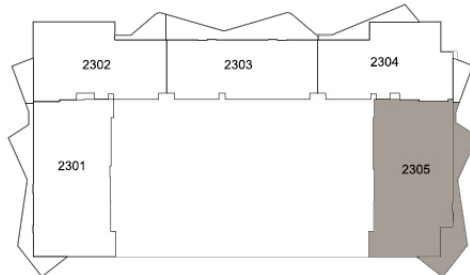
← DUBAI EYE



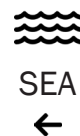
Disclaimer:
1. All materials, finishes, dimensions and drawings are approximate.
2. Information is subject to change without notice.
3. Actual suite area may vary from the stated area.
4. Drawings are not to scale.
5. The Developer reserves the right to make revisions/alterations without any liability whatsoever.

APARTMENT
3 BEDROOMS
UNIT 05 | LEVEL 23

SUITE AREA	1968.29 SQ.FT.	182.86 SQ.M.
BALCONY AREA	415.81 SQ.FT.	38.63 SQ.M.
TOTAL AREA	2384.10 SQ.FT.	221.49 SQ.M.



|||
SHEIKH ZAYED



Disclaimer:
1. All materials, finishes, dimensions and drawings are approximate.
2. Information is subject to change without notice.
3. Actual suite area may vary from the stated area.
4. Drawings are not to scale.
5. The Developer reserves the right to make revisions/alterations without any liability whatsoever.

APARTMENT 3 BEDROOMS

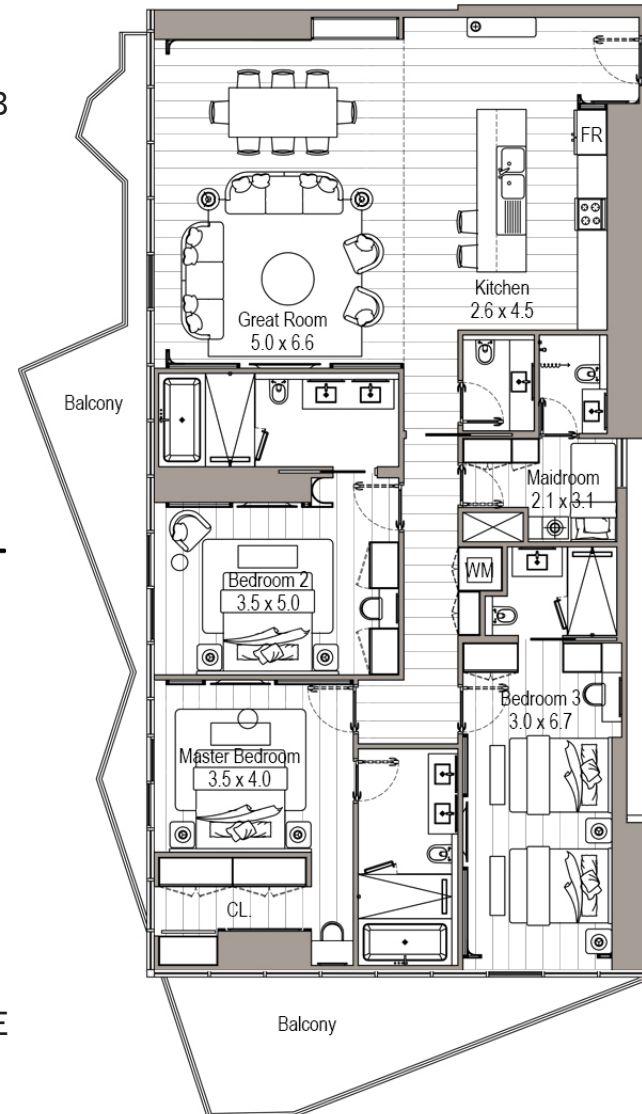
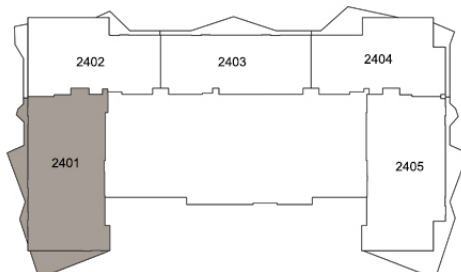
UNIT 01 | LEVEL 24

SUITE AREA	2009.19 SQ.FT.	186.66 SQ.M.
BALCONY AREA	379.86 SQ.FT.	35.29 SQ.M.
TOTAL AREA	2389.05 SQ.FT.	221.95 SQ.M.

← BURJ AL ARAB

← SEA, PALM JUMEIRAH

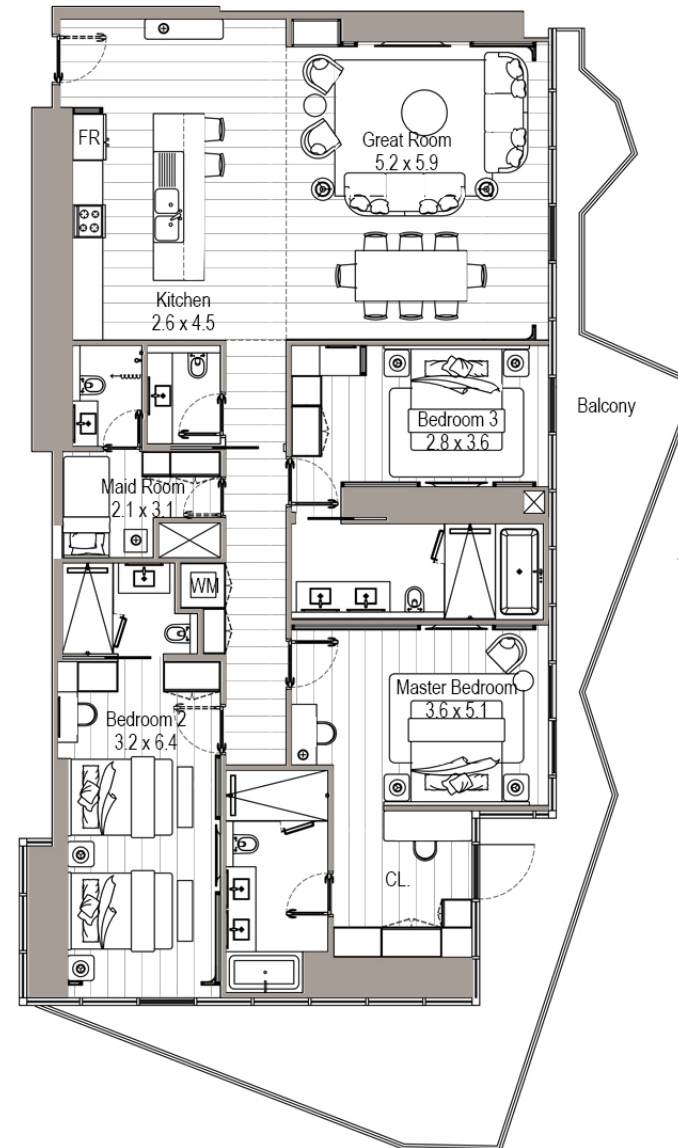
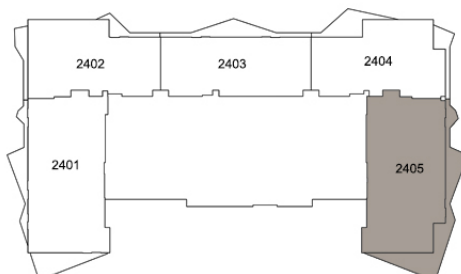
← DUBAI EYE



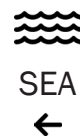
Disclaimer:
1. All materials, finishes, dimensions and drawings are approximate.
2. Information is subject to change without notice.
3. Actual suite area may vary from the stated area.
4. Drawings are not to scale.
5. The Developer reserves the right to make revisions/alterations without any liability whatsoever.

APARTMENT
3 BEDROOMS
UNIT 05 | LEVEL 24

SUITE AREA	1967.97 SQ.FT.	182.83 SQ.M.
BALCONY AREA	490.51 SQ.FT.	45.57 SQ.M.
TOTAL AREA	2458.48 SQ.FT.	228.40 SQ.M.




SHEIKH ZAYED



Disclaimer:
1. All materials, finishes, dimensions and drawings are approximate.
2. Information is subject to change without notice.
3. Actual suite area may vary from the stated area.
4. Drawings are not to scale.
5. The Developer reserves the right to make revisions/alterations without any liability whatsoever.

APARTMENT 3 BEDROOMS

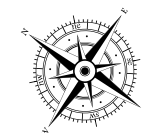
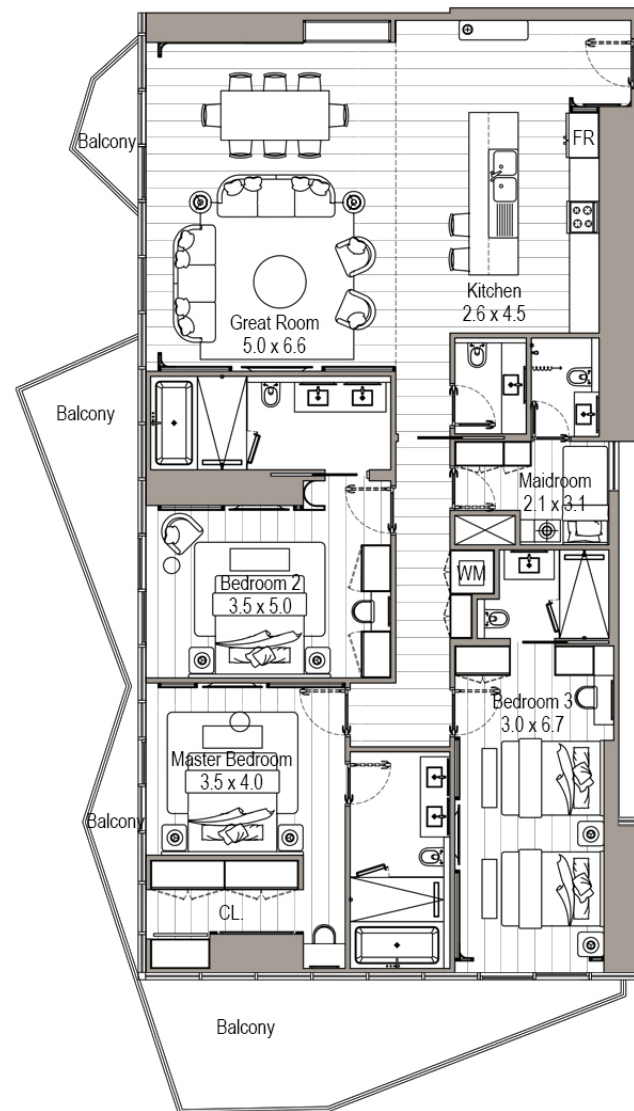
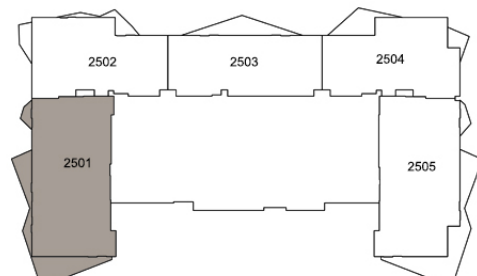
UNIT 01 | LEVEL 25

SUITE AREA	2009.19 SQ.FT.	186.66 SQ.M.
BALCONY AREA	385.35 SQ.FT.	35.80 SQ.M.
TOTAL AREA	2394.54 SQ.FT.	222.46 SQ.M.

← BURJ AL ARAB

← SEA, PALM JUMEIRAH

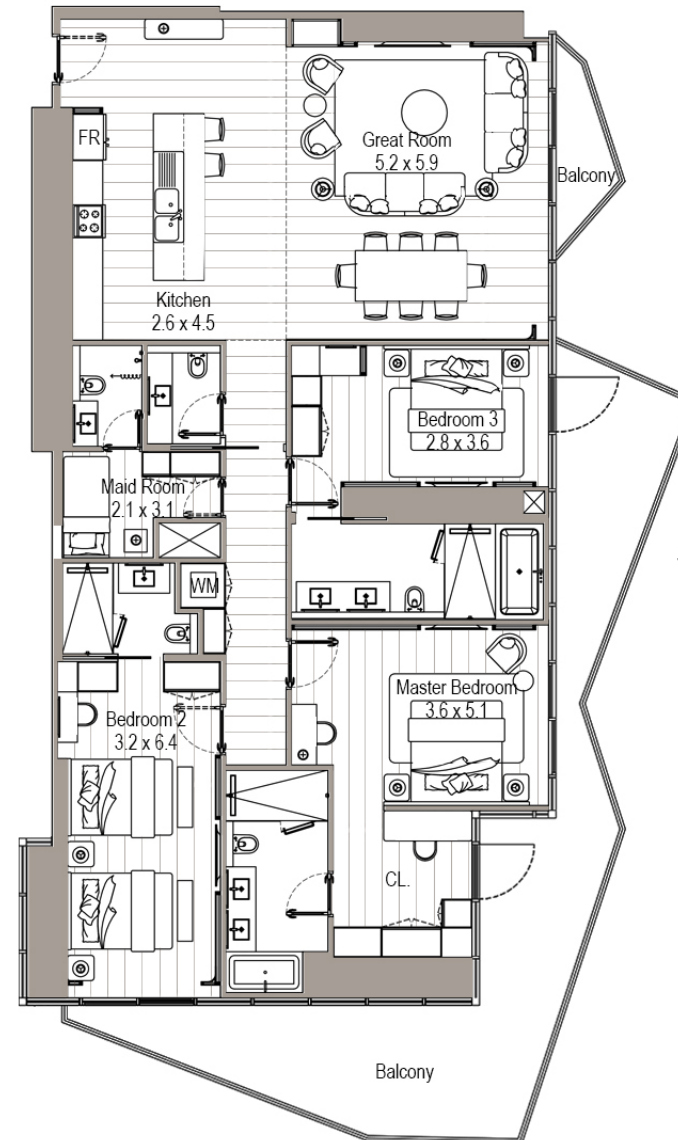
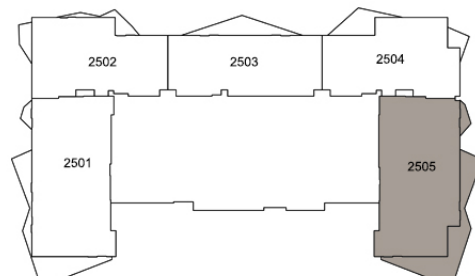
← DUBAI EYE



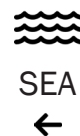
Disclaimer:
1. All materials, finishes, dimensions and drawings are approximate.
2. Information is subject to change without notice.
3. Actual suite area may vary from the stated area.
4. Drawings are not to scale.
5. The Developer reserves the right to make revisions/alterations without any liability whatsoever.

APARTMENT
3 BEDROOMS
UNIT 05 | LEVEL 25

SUITE AREA	1971.84 SQ.FT.	183.19 SQ.M.
BALCONY AREA	491.48 SQ.FT.	45.66 SQ.M.
TOTAL AREA	2463.32 SQ.FT.	228.85 SQ.M.



|||
SHEIKH ZAYED



Disclaimer:
1. All materials, finishes, dimensions and drawings are approximate.
2. Information is subject to change without notice.
3. Actual suite area may vary from the stated area.
4. Drawings are not to scale.
5. The Developer reserves the right to make revisions/alterations without any liability whatsoever.

APARTMENT 3 BEDROOMS

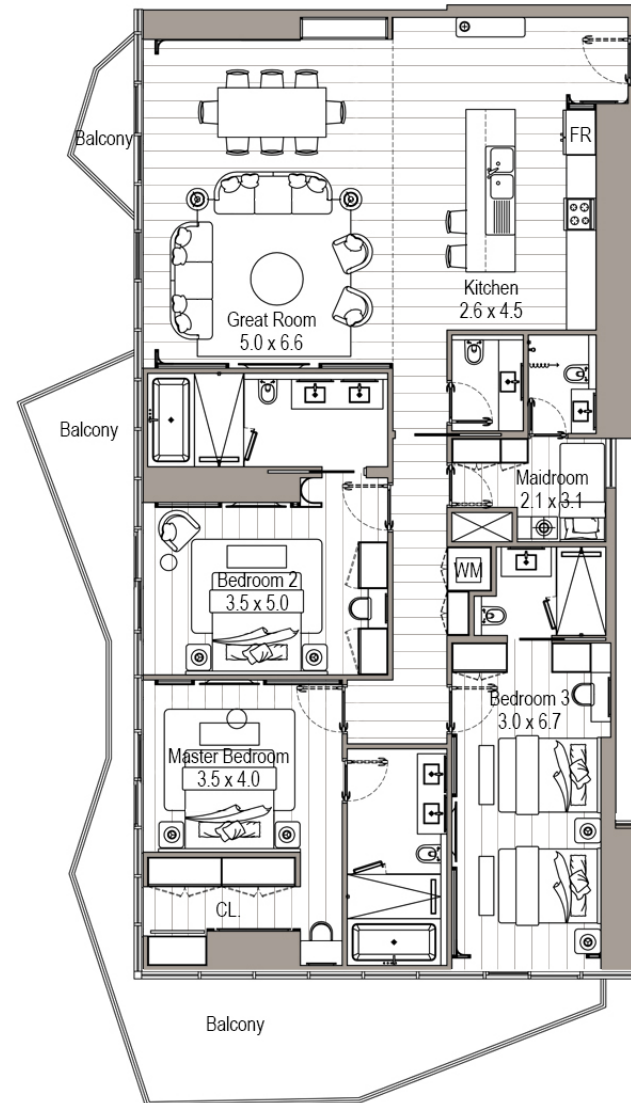
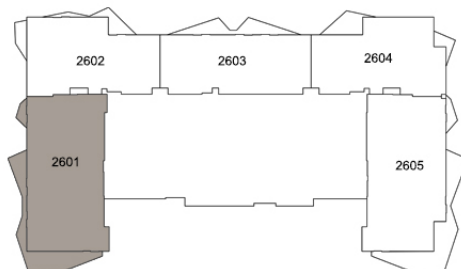
UNIT 01 | LEVEL 26

SUITE AREA	2009.08 SQ.FT.	186.65 SQ.M.
BALCONY AREA	404.72 SQ.FT.	37.60 SQ.M.
TOTAL AREA	2413.81 SQ.FT.	224.25 SQ.M.

← BURJ AL ARAB

← SEA, PALM JUMEIRAH

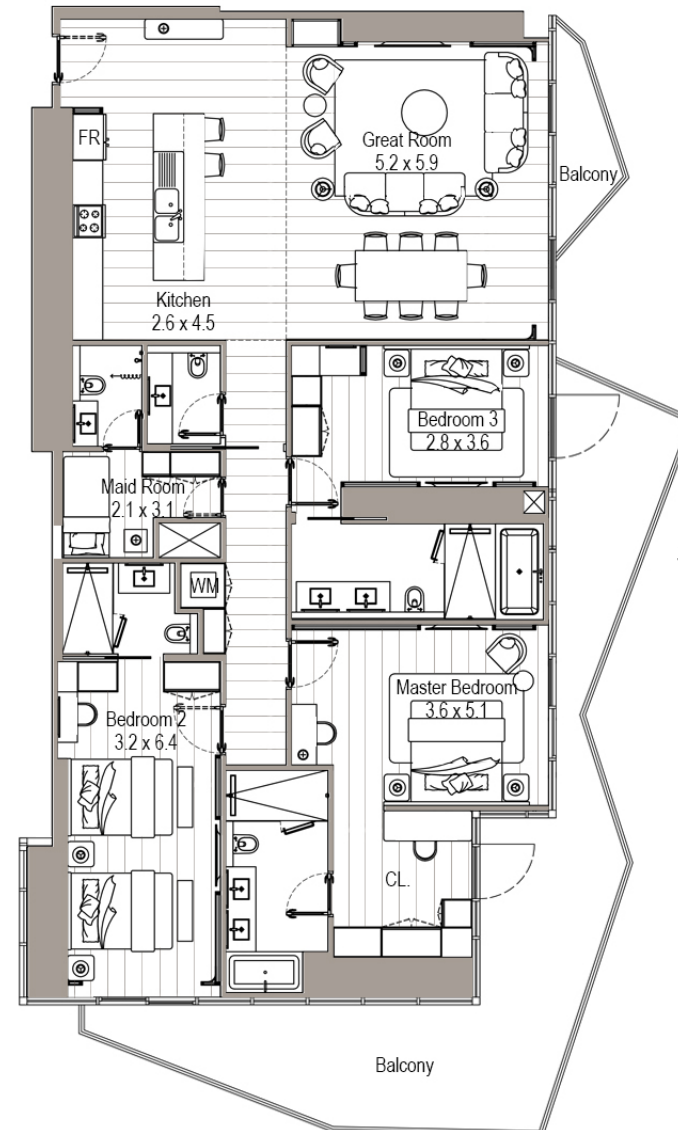
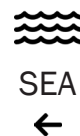
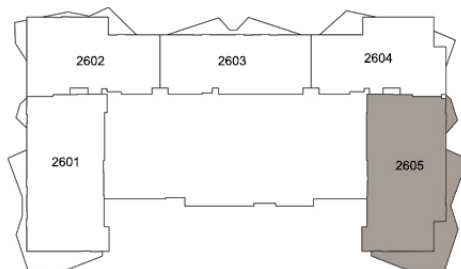
← DUBAI EYE



Disclaimer:
1. All materials, finishes, dimensions and drawings are approximate.
2. Information is subject to change without notice.
3. Actual suite area may vary from the stated area.
4. Drawings are not to scale.
5. The Developer reserves the right to make revisions/alterations without any liability whatsoever.

APARTMENT
3 BEDROOMS
UNIT 05 | LEVEL 26

SUITE AREA	1971.19 SQ.FT.	183.13 SQ.M.
BALCONY AREA	511.07 SQ.FT.	47.48 SQ.M.
TOTAL AREA	2482.27 SQ.FT.	230.61 SQ.M.



Disclaimer:
1. All materials, finishes, dimensions and drawings are approximate.
2. Information is subject to change without notice.
3. Actual suite area may vary from the stated area.
4. Drawings are not to scale.
5. The Developer reserves the right to make revisions/alterations without any liability whatsoever.

APARTMENT 3 BEDROOMS

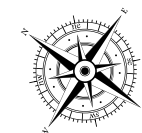
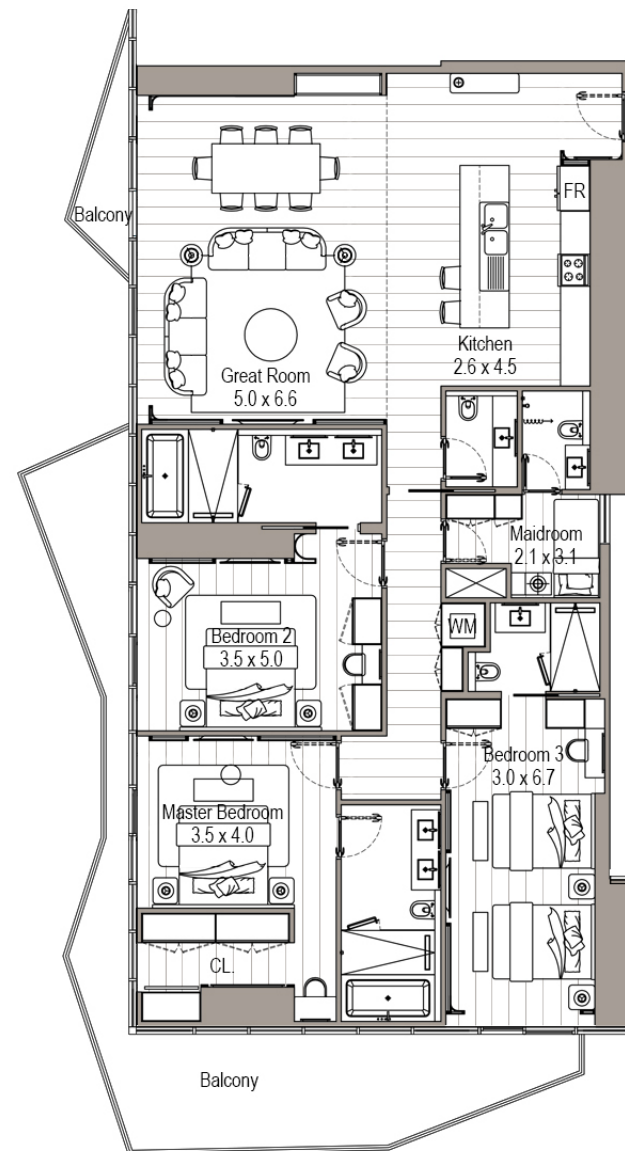
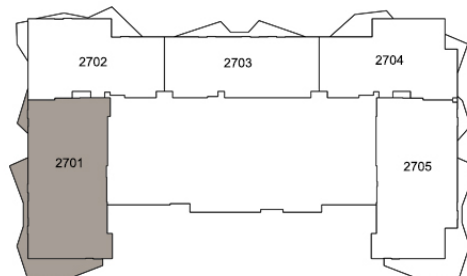
UNIT 01 | LEVEL 27

SUITE AREA	2009.08 SQ.FT.	186.65 SQ.M.
BALCONY AREA	401.49 SQ.FT.	37.30 SQ.M.
TOTAL AREA	2410.58 SQ.FT.	223.95 SQ.M.

← BURJ AL ARAB

← SEA, PALM JUMEIRAH

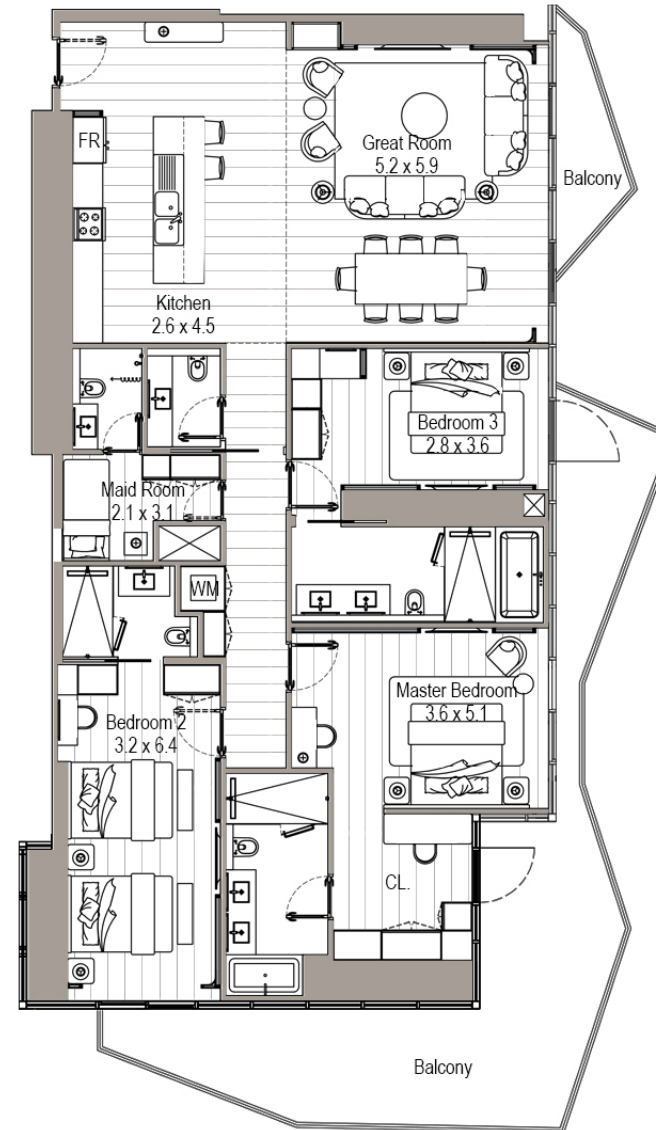
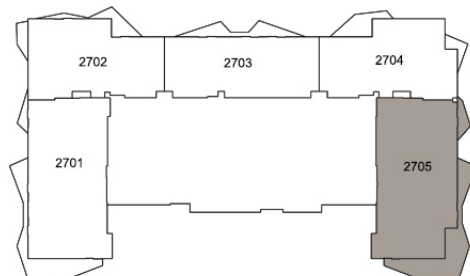
← DUBAI EYE



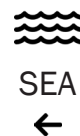
Disclaimer:
1. All materials, finishes, dimensions and drawings are approximate.
2. Information is subject to change without notice.
3. Actual suite area may vary from the stated area.
4. Drawings are not to scale.
5. The Developer reserves the right to make revisions/alterations without any liability whatsoever.

APARTMENT
3 BEDROOMS
UNIT 05 | LEVEL 27

SUITE AREA	1974.64 SQ.FT.	183.45 SQ.M.
BALCONY AREA	497.19 SQ.FT.	46.19 SQ.M.
TOTAL AREA	2471.82 SQ.FT.	229.64 SQ.M.



|||
SHEIKH ZAYED



Disclaimer:
1. All materials, finishes, dimensions and drawings are approximate.
2. Information is subject to change without notice.
3. Actual suite area may vary from the stated area.
4. Drawings are not to scale.
5. The Developer reserves the right to make revisions/alterations without any liability whatsoever.

APARTMENT 3 BEDROOMS

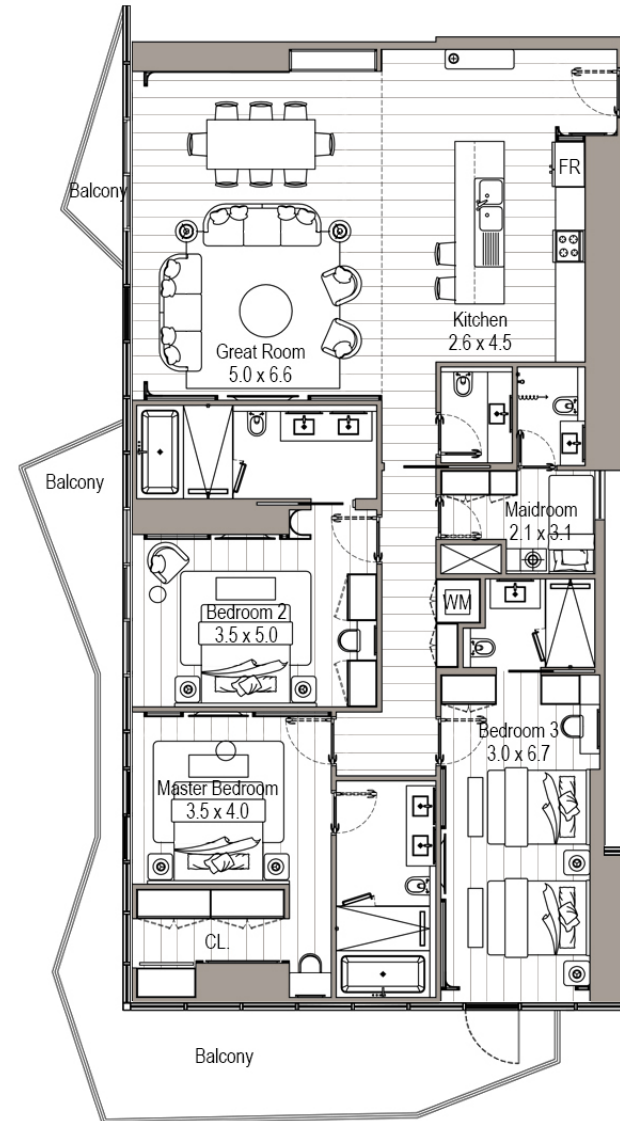
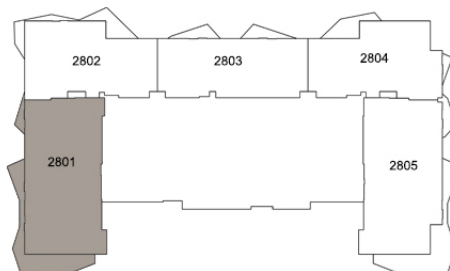
UNIT 01 | LEVEL 28

SUITE AREA	2008.98 SQ.FT.	186.64 SQ.M.
BALCONY AREA	390.41 SQ.FT.	36.27 SQ.M.
TOTAL AREA	239.38 SQ.FT.	222.91 SQ.M.

← BURJ AL ARAB

← SEA, PALM JUMEIRAH

← DUBAI EYE

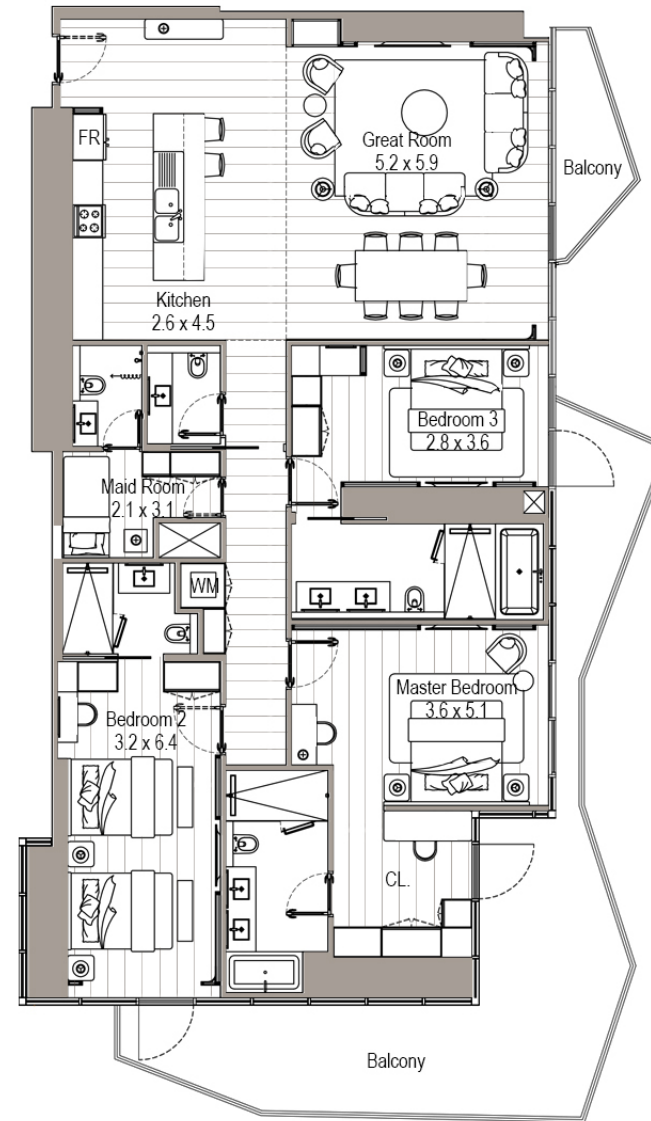
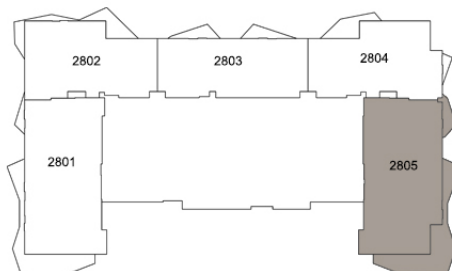


Disclaimer:
1. All materials, finishes, dimensions and drawings are approximate.
2. Information is subject to change without notice.
3. Actual suite area may vary from the stated area.
4. Drawings are not to scale.
5. The Developer reserves the right to make revisions/alterations without any liability whatsoever.

APARTMENT 3 BEDROOMS

UNIT 05 | LEVEL 28

SUITE AREA	1974.85 SQ.FT.	183.47 SQ.M.
BALCONY AREA	489.22 SQ.FT.	45.45 SQ.M.
TOTAL AREA	2464.07 SQ.FT.	228.92 SQ.M.



|||
SHEIKH ZAYED



Disclaimer:
1. All materials, finishes, dimensions and drawings are approximate.
2. Information is subject to change without notice.
3. Actual suite area may vary from the stated area.
4. Drawings are not to scale.
5. The Developer reserves the right to make revisions/alterations without any liability whatsoever.

Fairmont

RESIDENCES
DUBAI SKYLINE



Disclaimer:
1. All materials, finishes, dimensions and drawings are approximate.
2. Information is subject to change without notice.
3. Actual suite area may vary from the stated area.
4. Drawings are not to scale.
5. The Developer reserves the right to make revisions/alterations without any liability whatsoever.