

Vistamare | RESIDENCES
ISKELE – LONG BEACH

Vistamare RESIDENCES

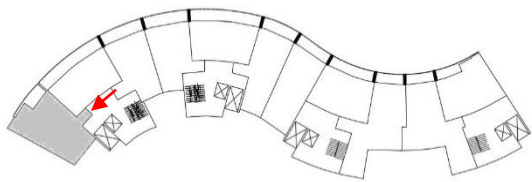
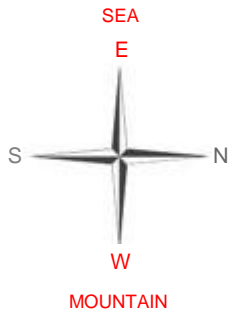
ISKELE - LONG BEACH



VISTAMARE SITE PLAN

Vistamare RESIDENCES

ISKELE - LONG BEACH



TYPE 01 2+1 OPEN KITCHEN

1. Entrance Hallway	3 m ²
2. Hallway	3 m ²
3. Kitchen and Living room	28 m ²
4. Bathroom	4 m ²
5. Bedroom I	18 m ²
6. Bedroom II	13 m ²
7. Terrace	14.6 m ²

Closed Area	87 m ²
Common Area	10 m ²
Overall Gross Area	97 m²

2.BLOCK

GROUND FLOOR
F:2001

1. FLOOR
F:2101

2. FLOOR
F:2201

3. FLOOR
F:2301

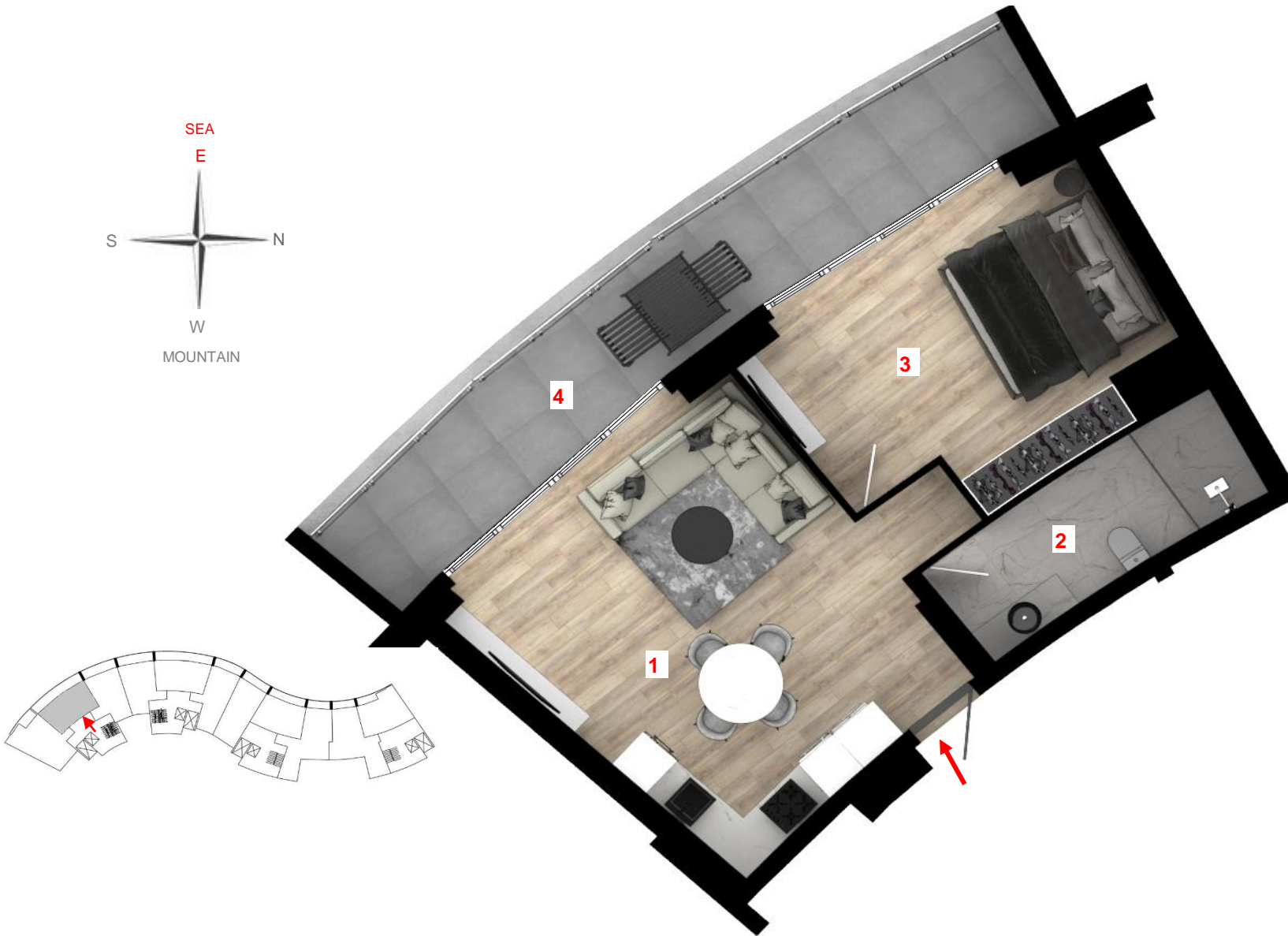
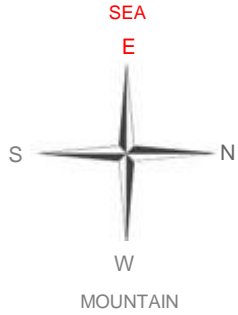
4. FLOOR
F:2401

5. FLOOR
F:2501

*Common Area ; calculated by including elevator halls, floor corridors, fire escape halls and spaces.

*Overall Gross Area ; calculated by including wall thicknesses, common areas and terraces.

*The investor reserves the right to make any technical change on the plan as it deems. The total usage area provided remains constant. Area square meters were calculated by including wall thicknesses.



TYPE 02 1+1 OPEN KITCHEN

1. Kitchen and Living room	25.6 m ²
2. Bathroom	7 m ²
3. Bedroom	17m ²
4. Terrace	20.3 m ²

Closed Area	80 m ²
Common Area	10 m ²
Overall Gross Area	90 m²

2.BLOCK

GROUND FLOOR
F:2002

1. FLOOR
F:2102

2. FLOOR
F:2202

3. FLOOR
F:2302

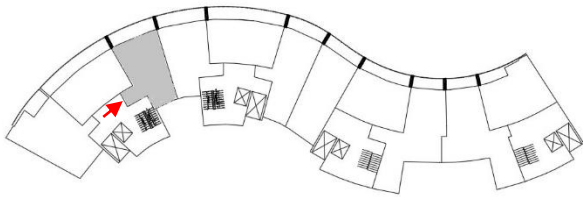
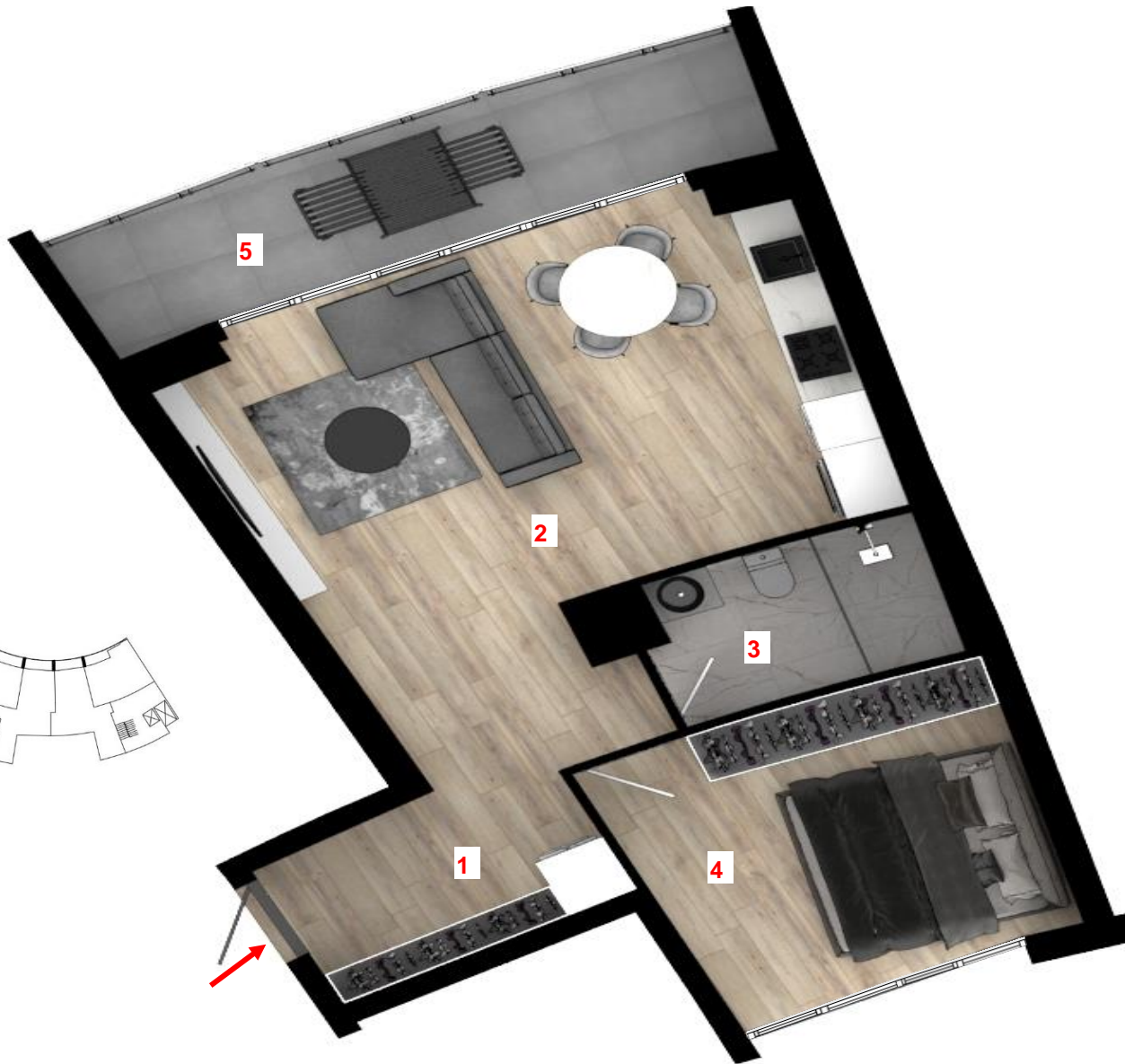
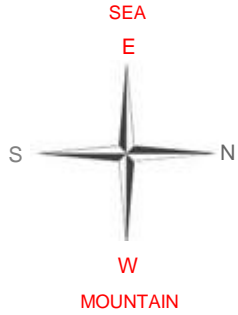
4. FLOOR
F:2402

5. FLOOR
F:2502

*Common Area ; calculated by including elevator halls, floor corridors, fire escape halls and spaces.

*Overall Gross Area ; calculated by including wall thicknesses, common areas and terraces.

*The investor reserves the right to make any technical change on the plan as it deems. The total usage area provided remains constant. Area square meters were calculated by including wall thicknesses.



TYPE 03 1+1 OPEN KITCHEN

1. Hallway	9,5 m ²
2. Kitchen and Living room	25,3 m ²
3. Bathroom	4.8 m ²
4. Bedroom	12,7 m ²
5. Terrace	12.3 m ²

Closed Area	72 m ²
Common Area	10 m ²
Overall Gross Area	82 m²

2.BLOCK

GROUND FLOOR
F:2003

1. FLOOR
F:2103

2. FLOOR
F:2203

3. FLOOR
F:2303

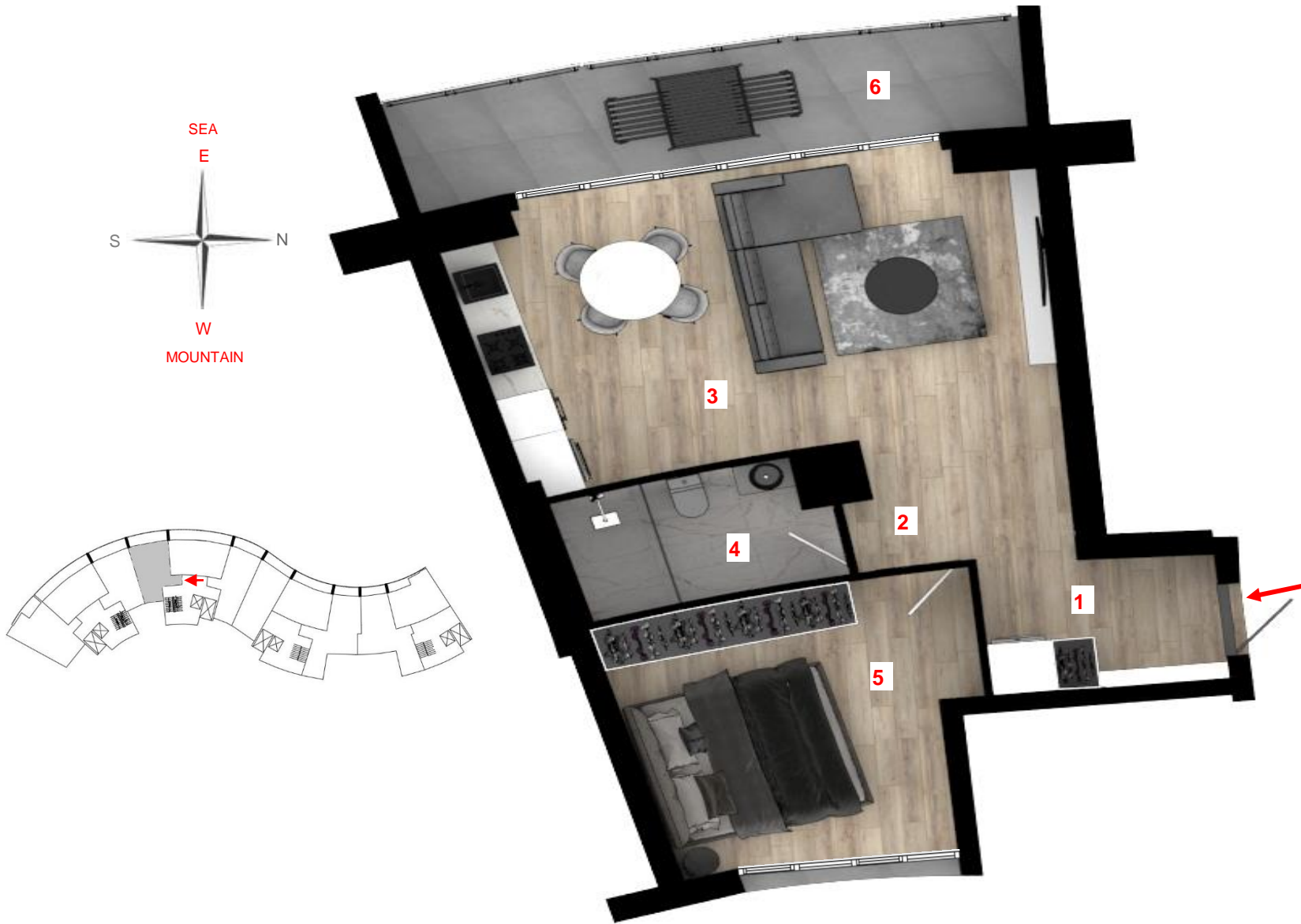
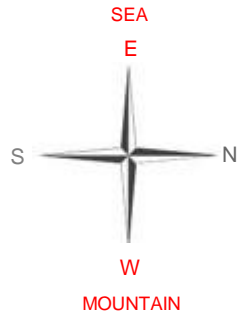
4. FLOOR
F:2403

5. FLOOR
F:2503

*Common Area ; calculated by including elevator halls, floor corridors, fire escape halls and spaces.

*Overall Gross Area ; calculated by including wall thicknesses, common areas and terraces.

*The investor reserves the right to make any technical change on the plan as it deems. The total usage area provided remains constant. Area square meters were calculated by including wall thicknesses.



TYPE 04 1+1 OPEN KITCHEN

1. Entrance Hallway	5 m2
2. Hallway	4,2 m2
3. Kitchen and Living room	24.6 m2
4. Bathroom	4.8 m2
5. Bedroom	13.6 m2
6. Terrace	12.5 m2

Closed Area	72 m2
Common Area	10 m2
Overall Gross Area	82 m2

2.BLOCK

GROUND FLOOR
F:2004

1. FLOOR
F:2104

2. FLOOR
F:2204

3. FLOOR
F:2304

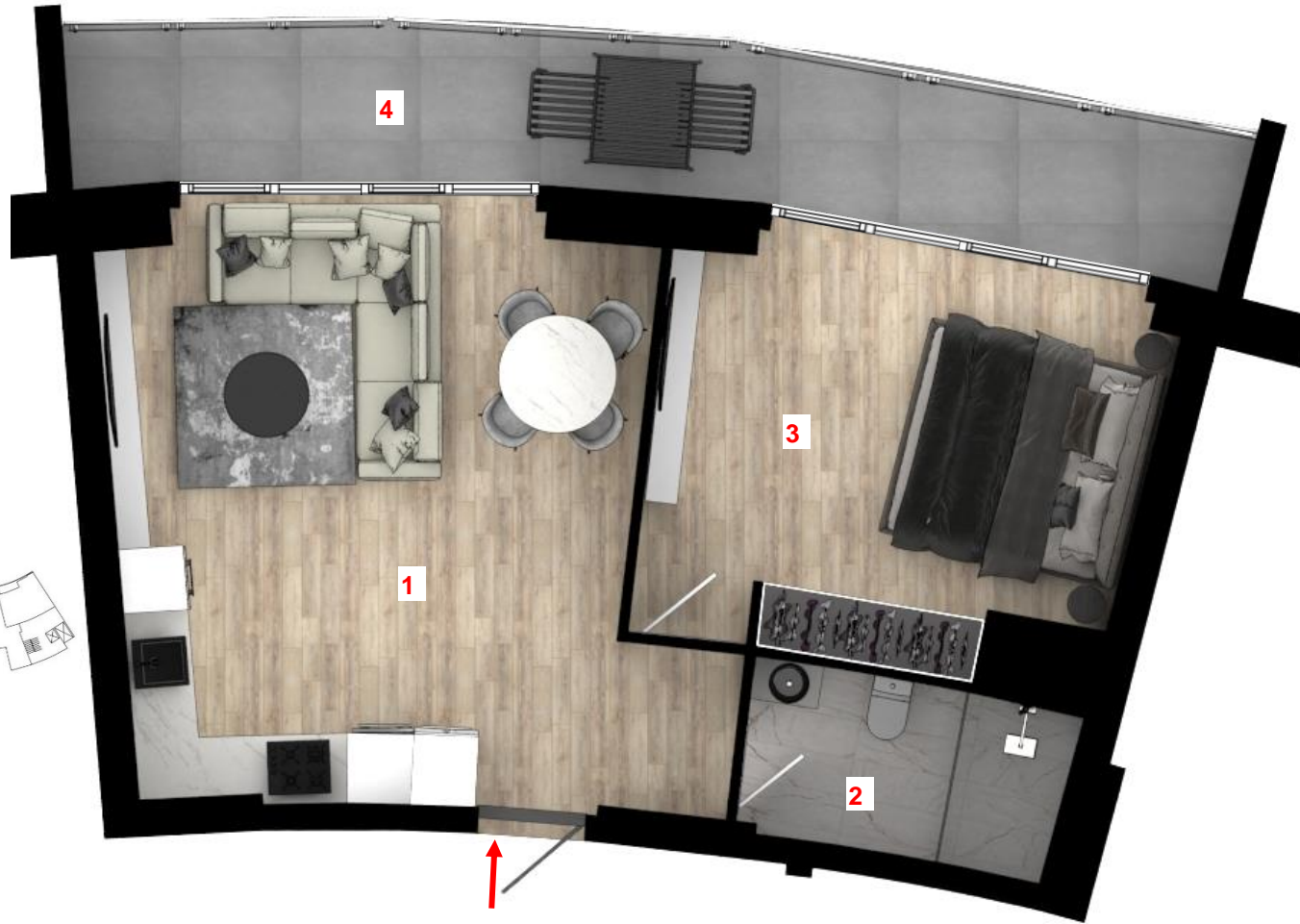
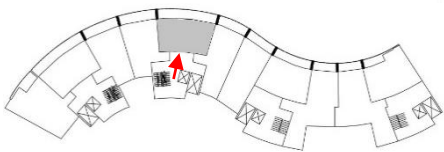
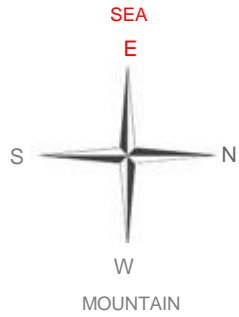
4. FLOOR
F:2404

5. FLOOR
F:2504

*Common Area ; calculated by including elevator halls, floor corridors, fire escape halls and spaces.

*Overall Gross Area ; calculated by including wall thicknesses, common areas and terraces.

*The investor reserves the right to make any technical change on the plan as it deems. The total usage area provided remains constant. Area square meters were calculated by including wall thicknesses.



TYPE 05 1+1 OPEN KITCHEN

1. Kitchen and Living room	26.8 m ²
2. Bathroom	4.8 m ²
3. Bedroom	17.2 m ²
4. Terrace	19 m ²

Closed Area	79 m ²
Common Area	10 m ²
Overall Gross Area	89 m²

2.BLOCK

GROUND FLOOR
F:2005

1. FLOOR
F:2105

2. FLOOR
F:2205

3. FLOOR
F:2305

4. FLOOR
F:2405

5. FLOOR
F:2505

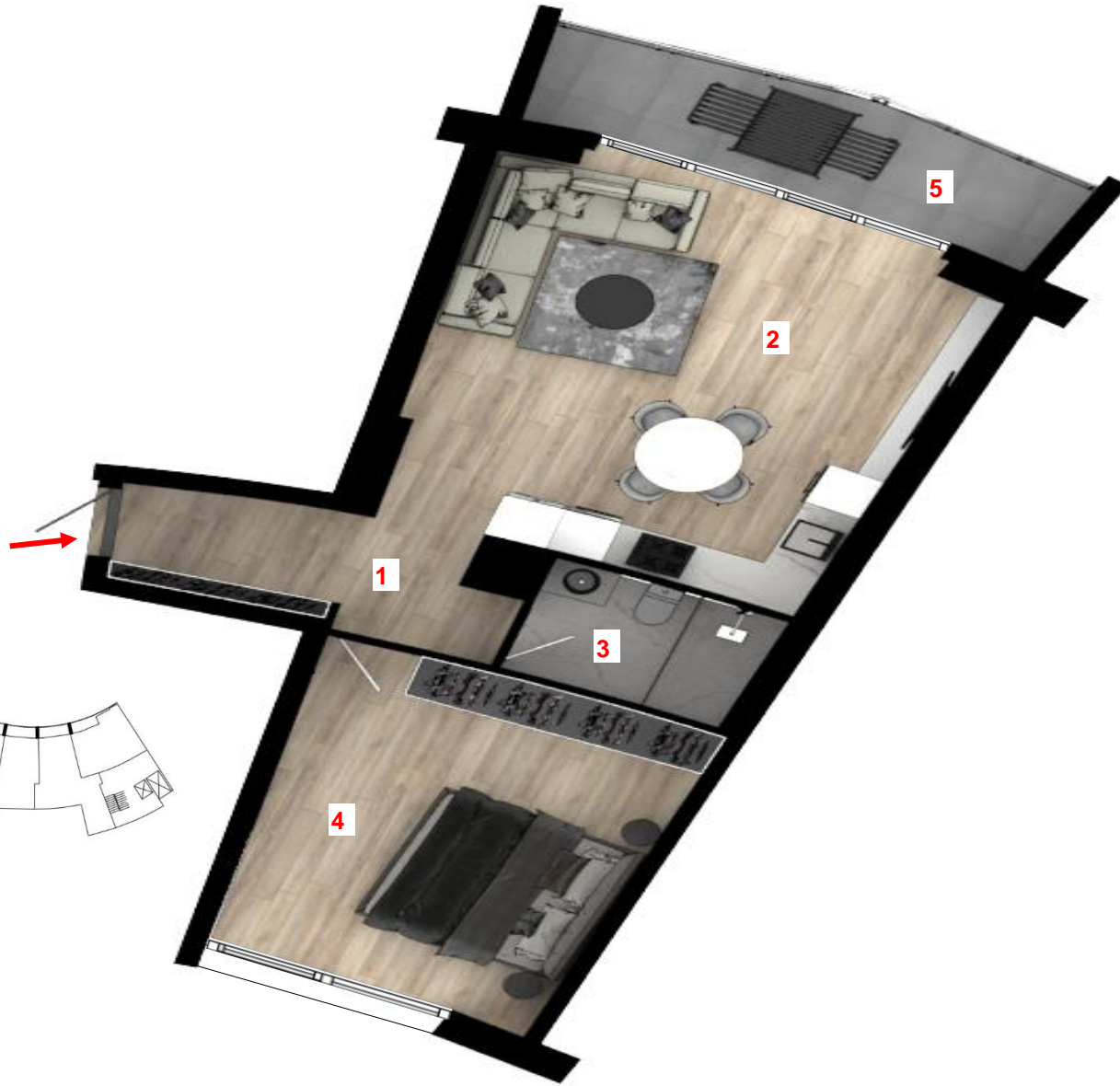
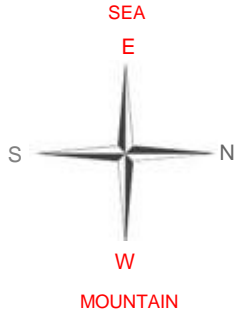
*Common Area ; calculated by including elevator halls, floor corridors, fire escape halls and spaces.

*Overall Gross Area ; calculated by including wall thicknesses, common areas and terraces.

*The investor reserves the right to make any technical change on the plan as it deems. The total usage area provided remains constant. Area square meters were calculated by including wall thicknesses.

Vistamare RESIDENCES

ISKELE - LONG BEACH



TYPE 06 1+1 OPEN KITCHEN

1. Entrance Hallway	6 m2
2. Kitchen and Living room	28.3 m2
3. Bathroom	4 m2
4. Bedroom	18.4 m2
5. Terrace	10 m2

Closed Area	76 m2
Common Area	10 m2
Overall Gross Area	86 m2

2.BLOCK

GROUND FLOOR
F:2006

1. FLOOR
F:2106

2. FLOOR
F:2206

3. FLOOR
F:2306

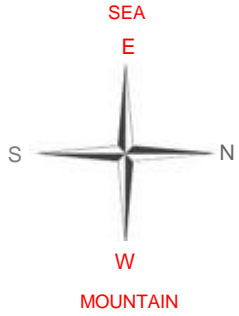
4. FLOOR
F:2406

5. FLOOR
F:2506

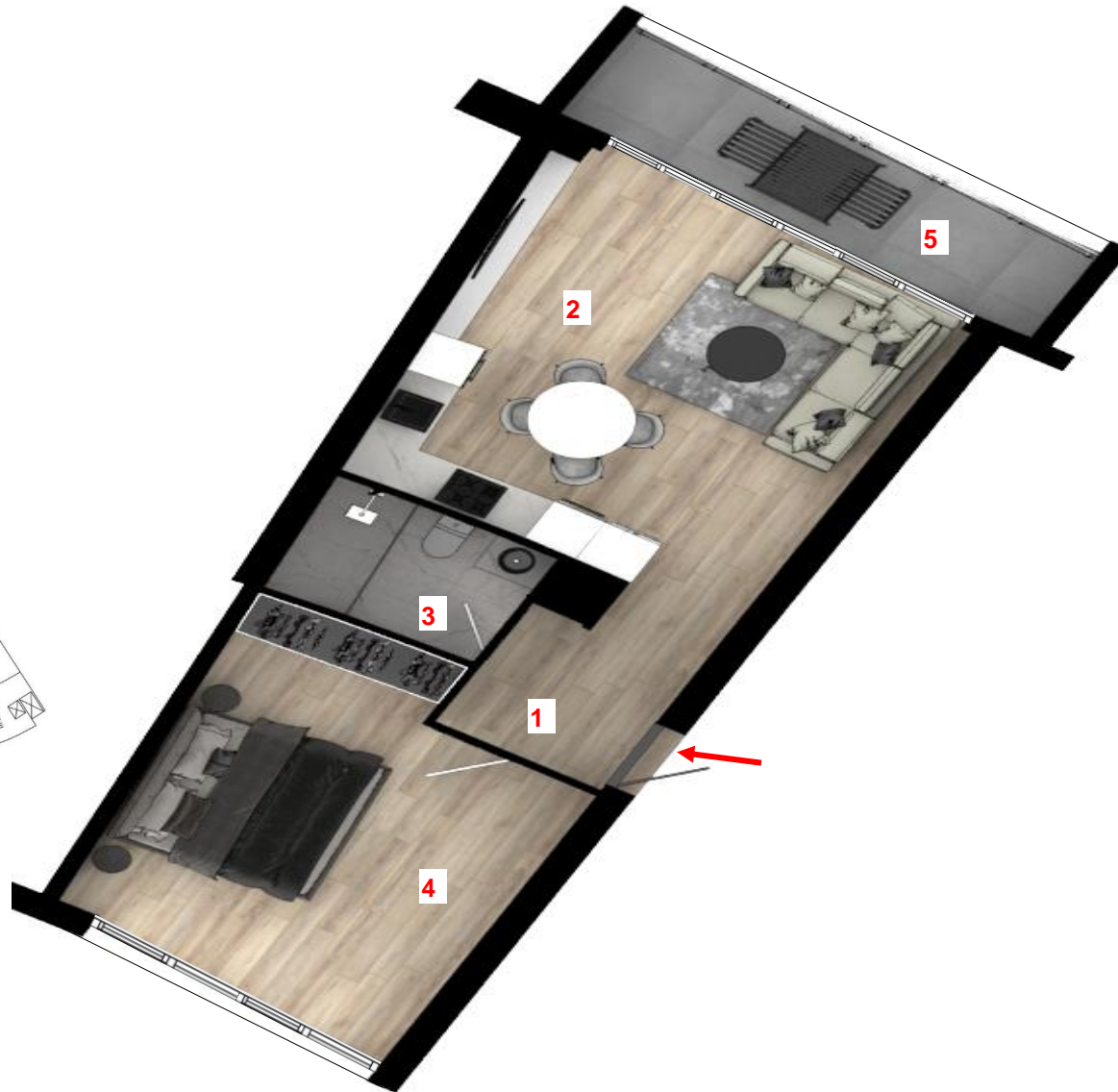
*Common Area ; calculated by including elevator halls, floor corridors, fire escape halls and spaces.

*Overall Gross Area ; calculated by including wall thicknesses, common areas and terraces.

*The investor reserves the right to make any technical change on the plan as it deems. The total usage area provided remains constant. Area square meters were calculated by including wall thicknesses.

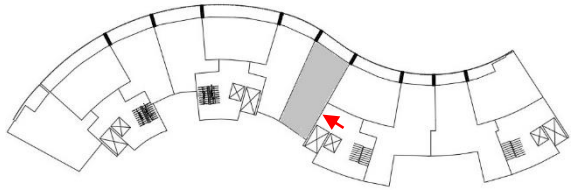


TYPE 07 1+1 OPEN KITCHEN



1. Entrance Hallway	5 m ²
2. Kitchen and Living room	25.5 m ²
3. Bathroom	4 m ²
4. Bedroom	19.4 m ²
5. Terrace	9 m ²

Closed Area	70 m ²
Common Area	10 m ²
Overall Gross Area	80 m²



2.BLOCK GROUND FLOOR 1. FLOOR 2. FLOOR 3. FLOOR 4. FLOOR 5. FLOOR
 F:2007 F:2107 F:2207 F:2307 F:2407 F:2507

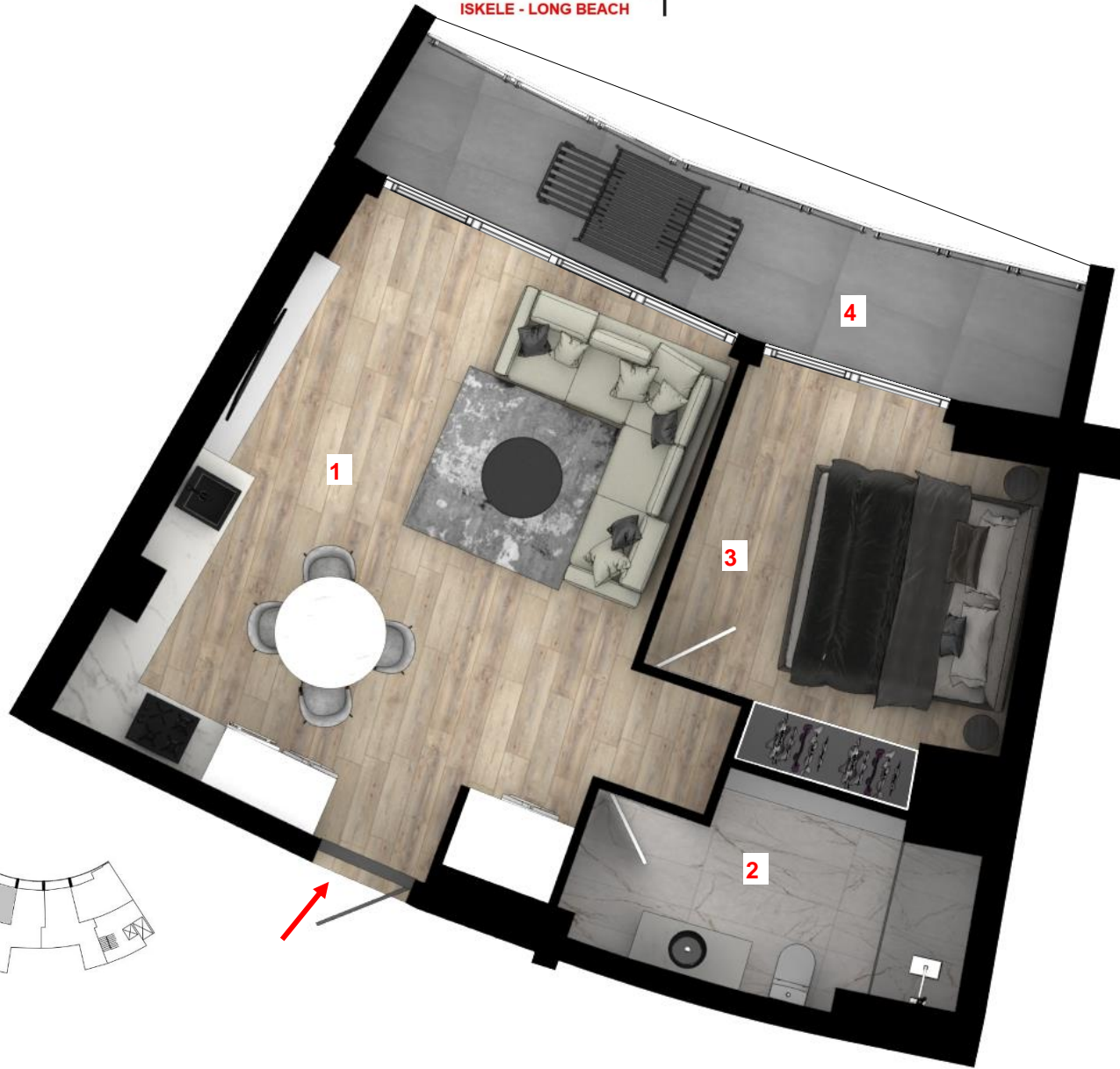
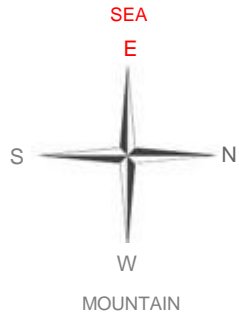
*Common Area ; calculated by including elevator halls, floor corridors, fire escape halls and spaces.

*Overall Gross Area ; calculated by including wall thicknesses, common areas and terraces.

*The investor reserves the right to make any technical change on the plan as it deems. The total usage area provided remains constant. Area square meters were calculated by including wall thicknesses.

Vistamare RESIDENCES

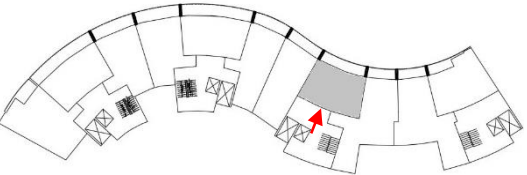
ISKELE - LONG BEACH



TYPE 08 1+1 OPEN KITCHEN

1. Kitchen and Living room	28.3 m ²
2. Bathroom	6.8 m ²
3. Bedroom	11.8 m ²
4. Terrace	11.3 m ²

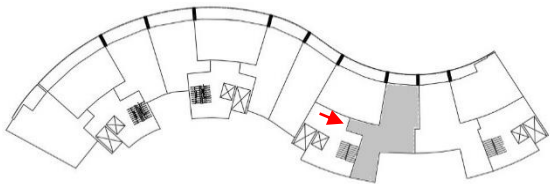
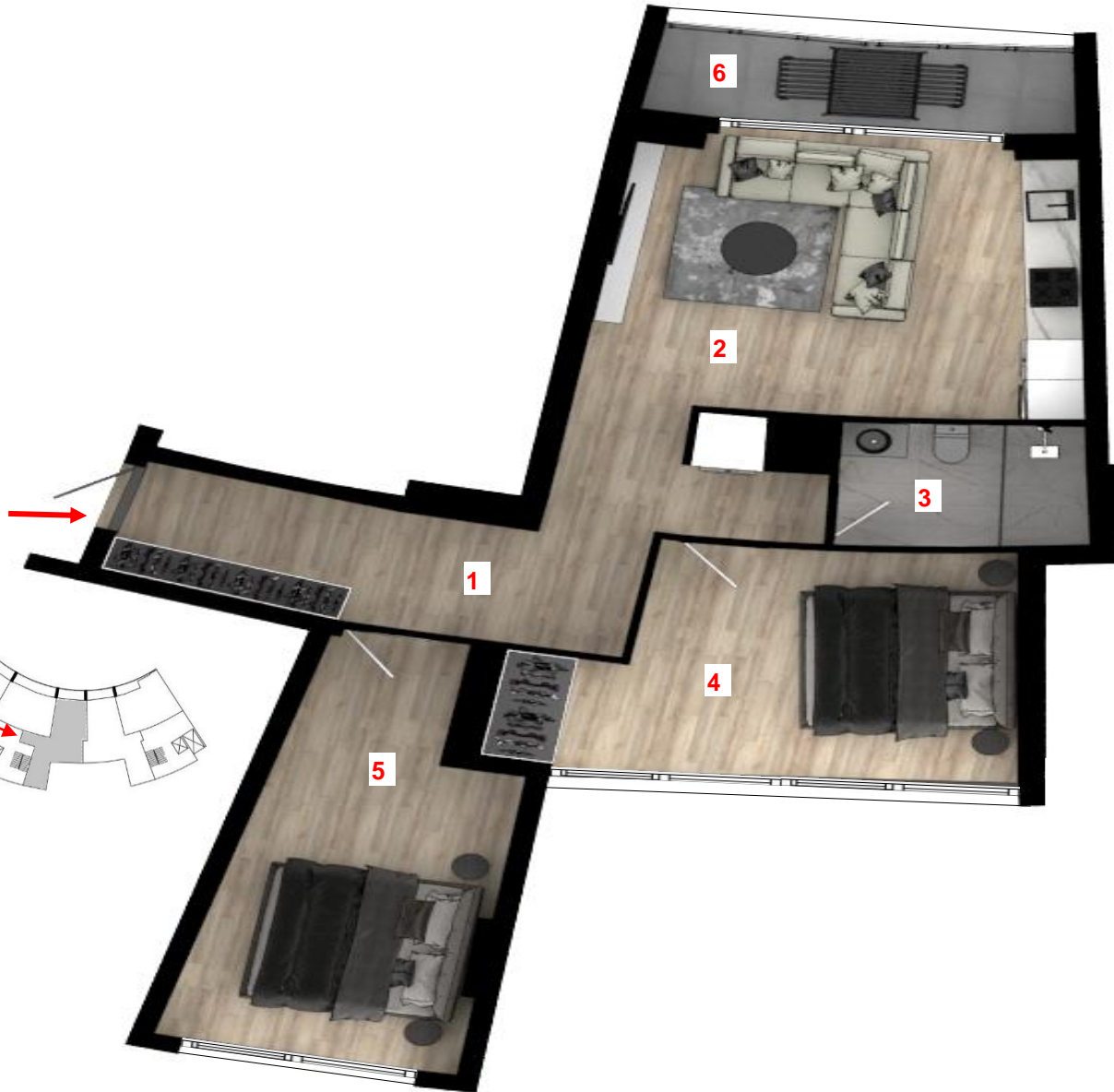
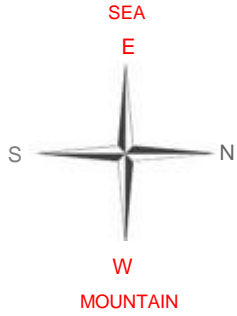
Closed Area	69 m ²
Common Area	10 m ²
Overall Gross Area	79 m²



2.BLOCK GROUND FLOOR 1. FLOOR 2. FLOOR 3. FLOOR 4. FLOOR 5. FLOOR
 F:2008 F:2108 F:2208 F:2308 F:2408 F:2508

*Common Area ; calculated by including elevator halls, floor corridors, fire escape halls and spaces.
 *Overall Gross Area ; calculated by including wall thicknesses, common areas and terraces.
 *The investor reserves the right to make any technical change on the plan as it deems. The total usage area provided remains constant. Area square meters were calculated by including wall thicknesses.





TYPE 09 2+1 OPEN KITCHEN

1. Entrance Hallway	13 m2
2. Kitchen and Living room	20 m2
3. Bathroom	4.8 m2
4. Bedroom I	16 m2
5. Bedroom II	16 m2
6. Terrace	6.8 m2

Closed Area	93 m2
Common Area	10 m2
Overall Gross Area	103 m2

2.BLOCK

GROUND FLOOR
F:2009

1. FLOOR
F:2109

2. FLOOR
F:2209

3. FLOOR
F:2309

4. FLOOR
F:2409

5. FLOOR
F:2509

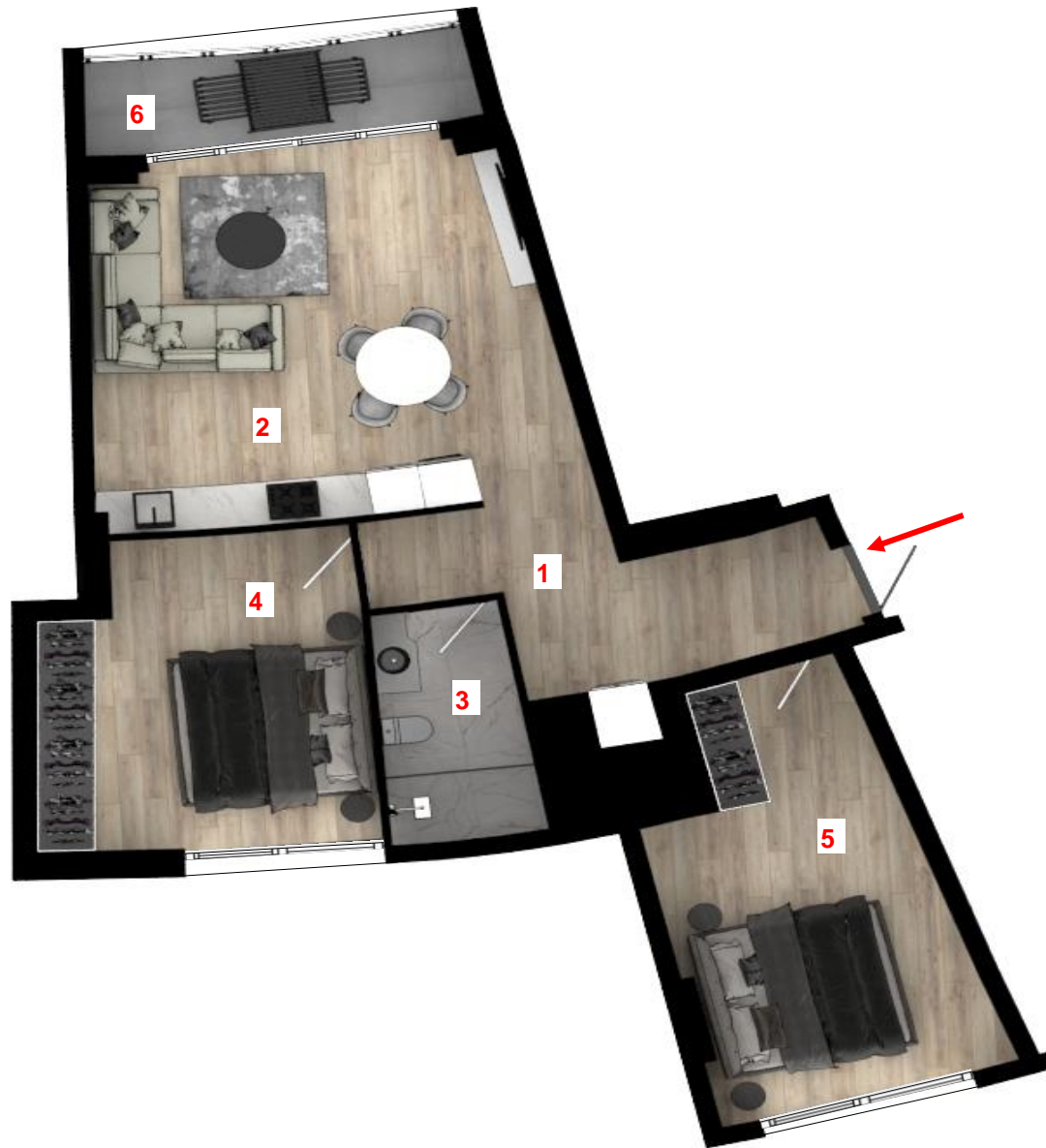
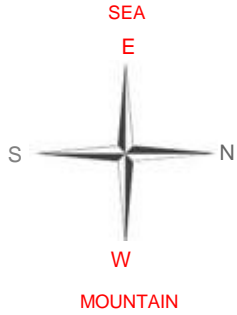
*Common Area ; calculated by including elevator halls, floor corridors, fire escape halls and spaces.

*Overall Gross Area ; calculated by including wall thicknesses, common areas and terraces.

*The investor reserves the right to make any technical change on the plan as it deems. The total usage area provided remains constant. Area square meters were calculated by including wall thicknesses.

Vistamare RESIDENCES

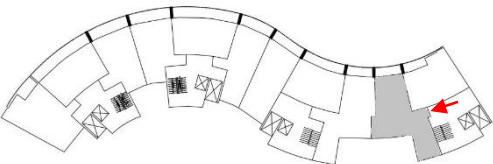
ISKELE - LONG BEACH



TYPE 10 2+1 OPEN KITCHEN

1. Hallway	10 m2
2. Kitchen and Living room	26.7 m2
3. Bathroom	5.3 m2
4. Bedroom I	15.6 m2
5. Bedroom II	18 m2
6. Terrace	6.6 m2

Closed Area	95 m2
Common Area	10 m2
Overall Gross Area	105 m2



2.BLOCK

GROUND FLOOR
F:2010

1. FLOOR
F:2110

2. FLOOR
F:2210

3. FLOOR
F:2310

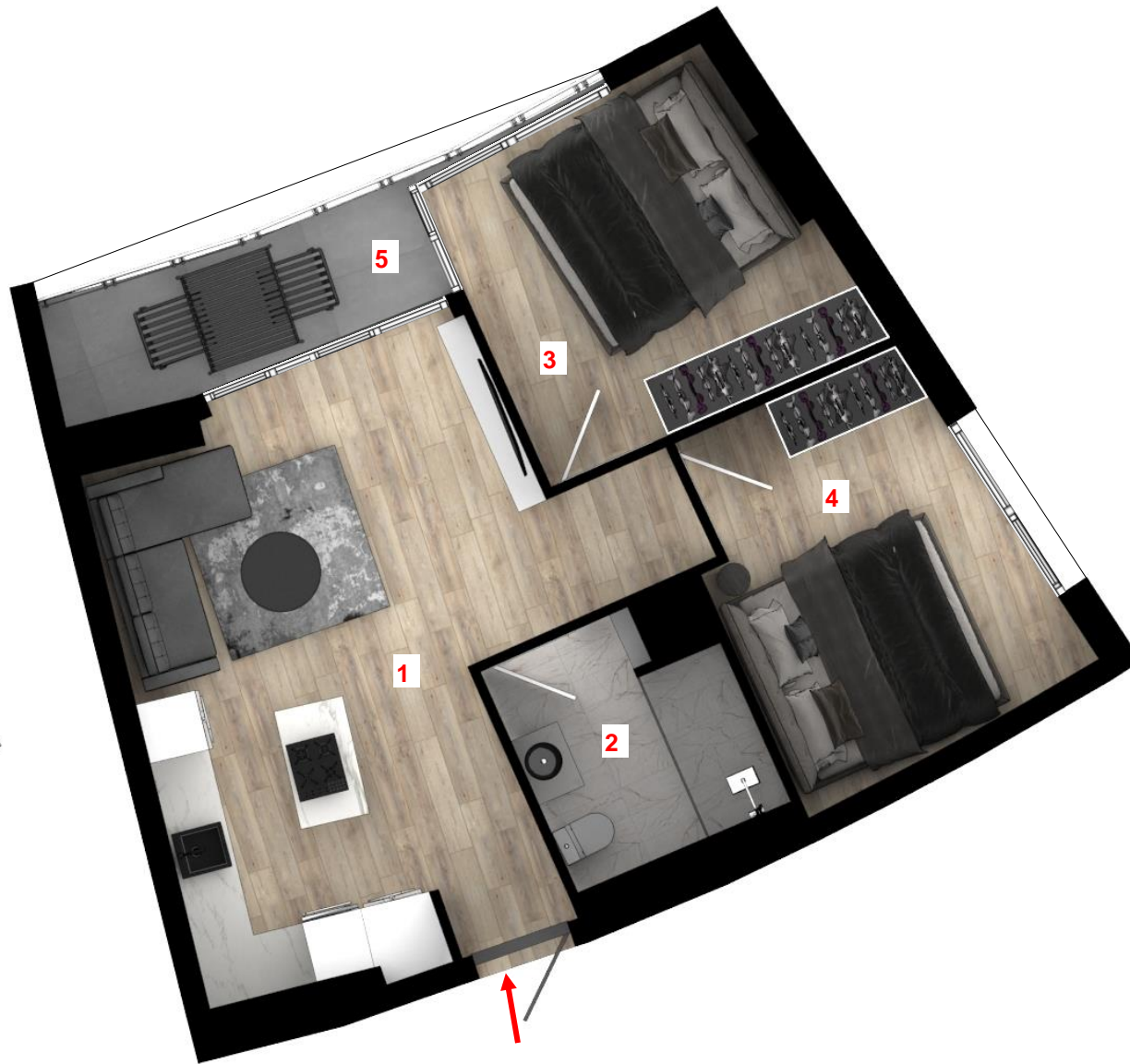
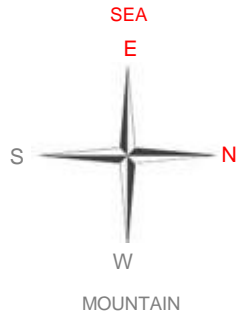
4. FLOOR
F:2410

5. FLOOR
F:2510

*Common Area ; calculated by including elevator halls, floor corridors, fire escape halls and spaces.

*Overall Gross Area ; calculated by including wall thicknesses, common areas and terraces.

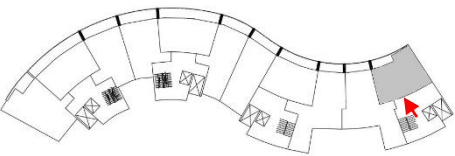
*The investor reserves the right to make any technical change on the plan as it deems. The total usage area provided remains constant. Area square meters were calculated by including wall thicknesses.



TYPE 11 2+1 OPEN KITCHEN

1. Kitchen and Living room	23.5 m ²
2. Bathroom	5 m ²
3. Bedroom I	11.2 m ²
4. Bedroom II	11 m ²
5. Terrace	5.8 m ²

Closed Area	68 m ²
Common Area	10 m ²
Overall Gross Area	78 m²



2.BLOCK

GROUND FLOOR
F:2011

1. FLOOR
F:2111

2. FLOOR
F:2211

3. FLOOR
F:2311

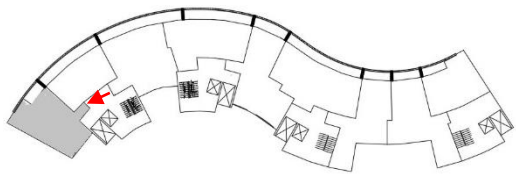
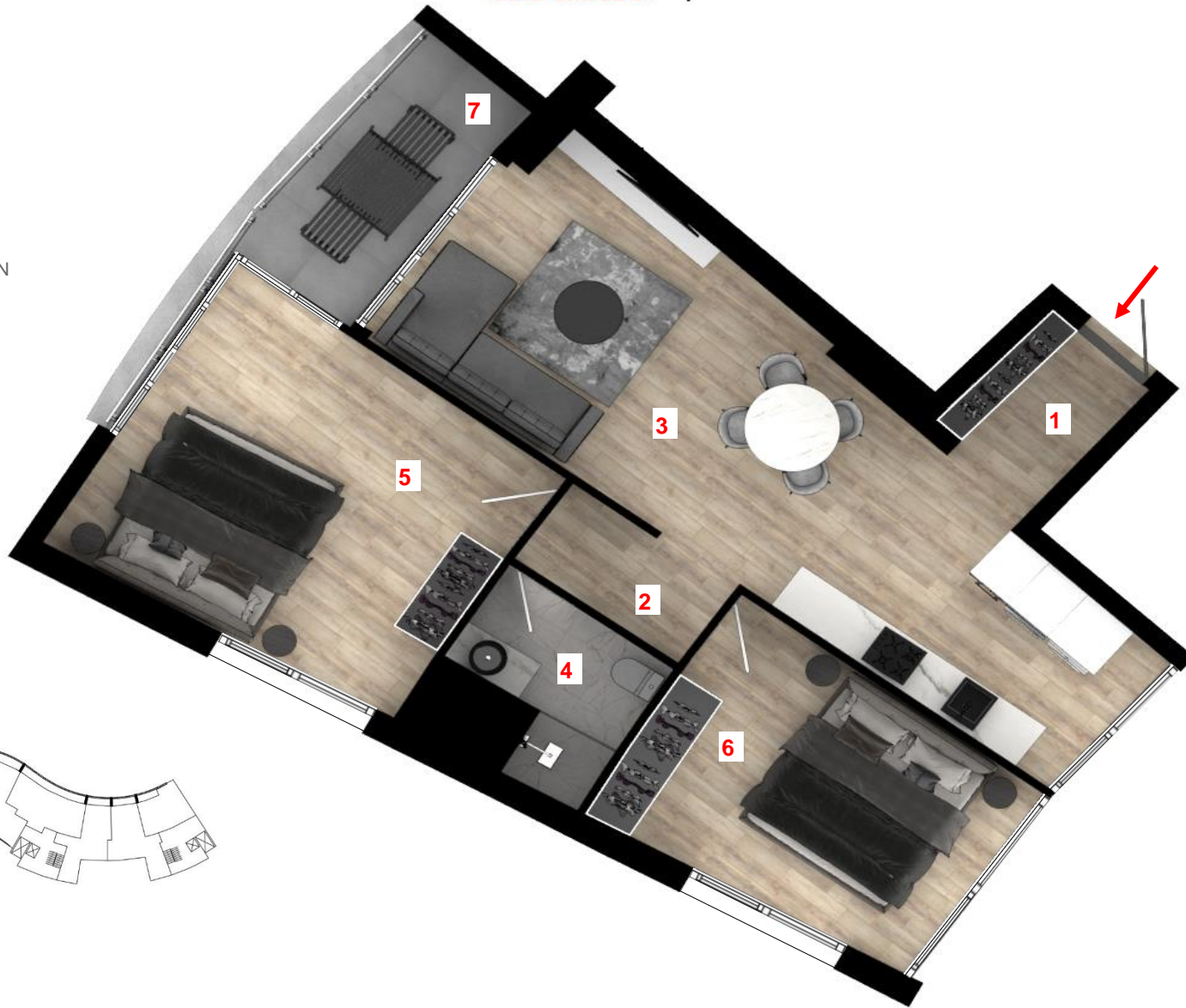
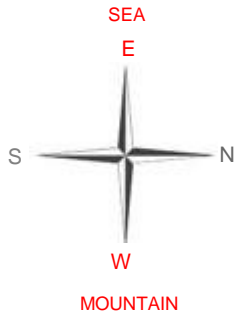
4. FLOOR
F:2411

5. FLOOR
F:2511

*Common Area ; calculated by including elevator halls, floor corridors, fire escape halls and spaces.

*Overall Gross Area ; calculated by including wall thicknesses, common areas and terraces.

*The investor reserves the right to make any technical change on the plan as it deems. The total usage area provided remains constant. Area square meters were calculated by including wall thicknesses.



TYPE 12 2+1 OPEN KITCHEN

1. Entrance Hallway	3 m2
2. Hallway	3 m2
3. Kitchen and Living room	28 m2
4. Bathroom	4 m2
5. Bedroom I	18 m2
6. Bedroom II	13 m2
7. Terrace	14.8 m2

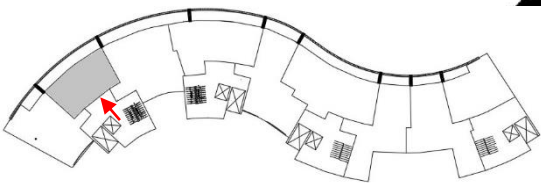
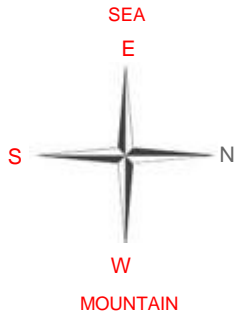
Closed Area	88 m2
Common Area	10 m2
Overall Gross Area	98 m2

2.BLOCK 6. FLOOR 7. FLOOR 8. FLOOR 9. FLOOR 10. FLOOR 11. FLOOR 12. FLOOR 13. FLOOR 14. FLOOR 15. FLOOR 16. FLOOR
 F:2601 F:2701 F:2801 F:2901 F:21001 F:21101 F:21201 F:21301 F:21401 F:21501 F:21601

*Common Area ; calculated by including elevator halls, floor corridors, fire escape halls and spaces.

*Overall Gross Area ; calculated by including wall thicknesses, common areas and terraces.

*The investor reserves the right to make any technical change on the plan as it deems. The total usage area provided remains constant. Area square meters were calculated by including wall thicknesses.



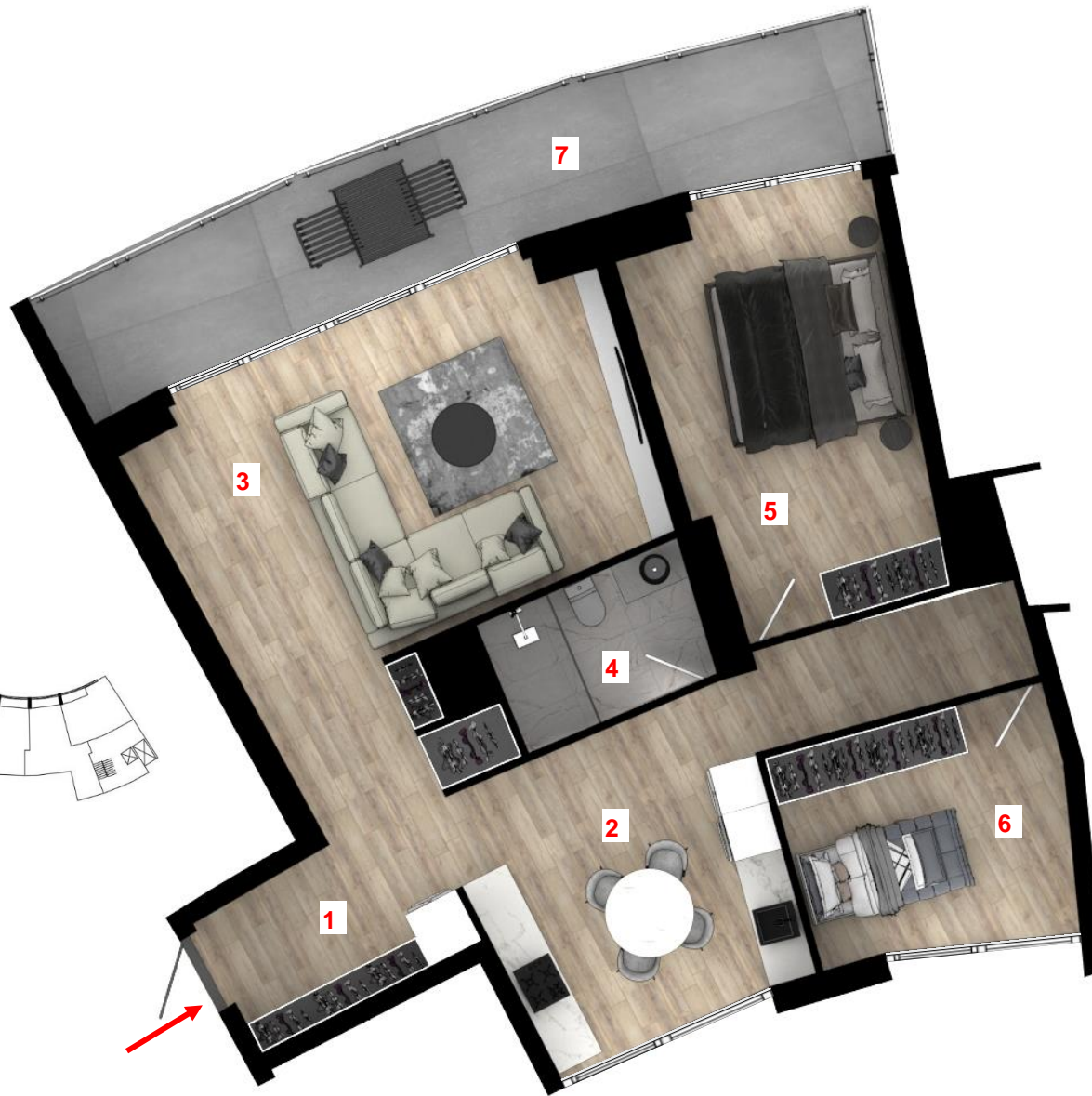
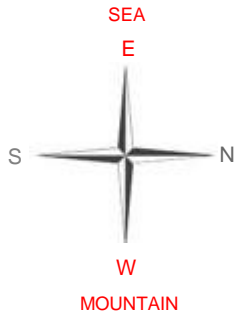
TYPE 13 1+1 OPEN KITCHEN

1. Kitchen and Living room	25.6 m ²
2. Bathroom	7 m ²
3. Bedroom	17m ²
4. Terrace	20.3 m ²

Closed Area	80 m ²
Common Area	10 m ²
Overall Gross Area	90 m²

2.BLOCK 6. FLOOR 7. FLOOR 8. FLOOR 9. FLOOR 10. FLOOR 11. FLOOR 12. FLOOR 13. FLOOR 14. FLOOR 15. FLOOR 16. FLOOR
 F:2602 F:2702 F:2802 F:2902 F:21002 F:21102 F:21202 F:21302 F:21402 F:21502 F:21602

*Common Area ; calculated by including elevator halls, floor corridors, fire escape halls and spaces.
 *Overall Gross Area ; calculated by including wall thicknesses, common areas and terraces.
 *The investor reserves the right to make any technical change on the plan as it deems. The total usage area provided remains constant. Area square meters were calculated by including wall thicknesses.



TYPE 14 2+1 OPEN KITCHEN

1. Entrance Hallway	5.7 m ²
2. Kitchen	14 m ²
3. Living Room	27.3 m ²
4. Bathroom	4.4 m ²
5. Bedroom I	13.8 m ²
6. Bedroom II	10 m ²
7. Terrace	25 m ²

Closed Area	120 m ²
Common Area	10 m ²
Overall Gross Area	130 m²

2. BLOCK

6. FLOOR
F:2603

7. FLOOR
F:2703

8. FLOOR
F:2803

9. FLOOR
F:2903

10. FLOOR
F:21003

11. FLOOR
F:21103

12. FLOOR
F:21203

13. FLOOR
F:21303

14. FLOOR
F:21403

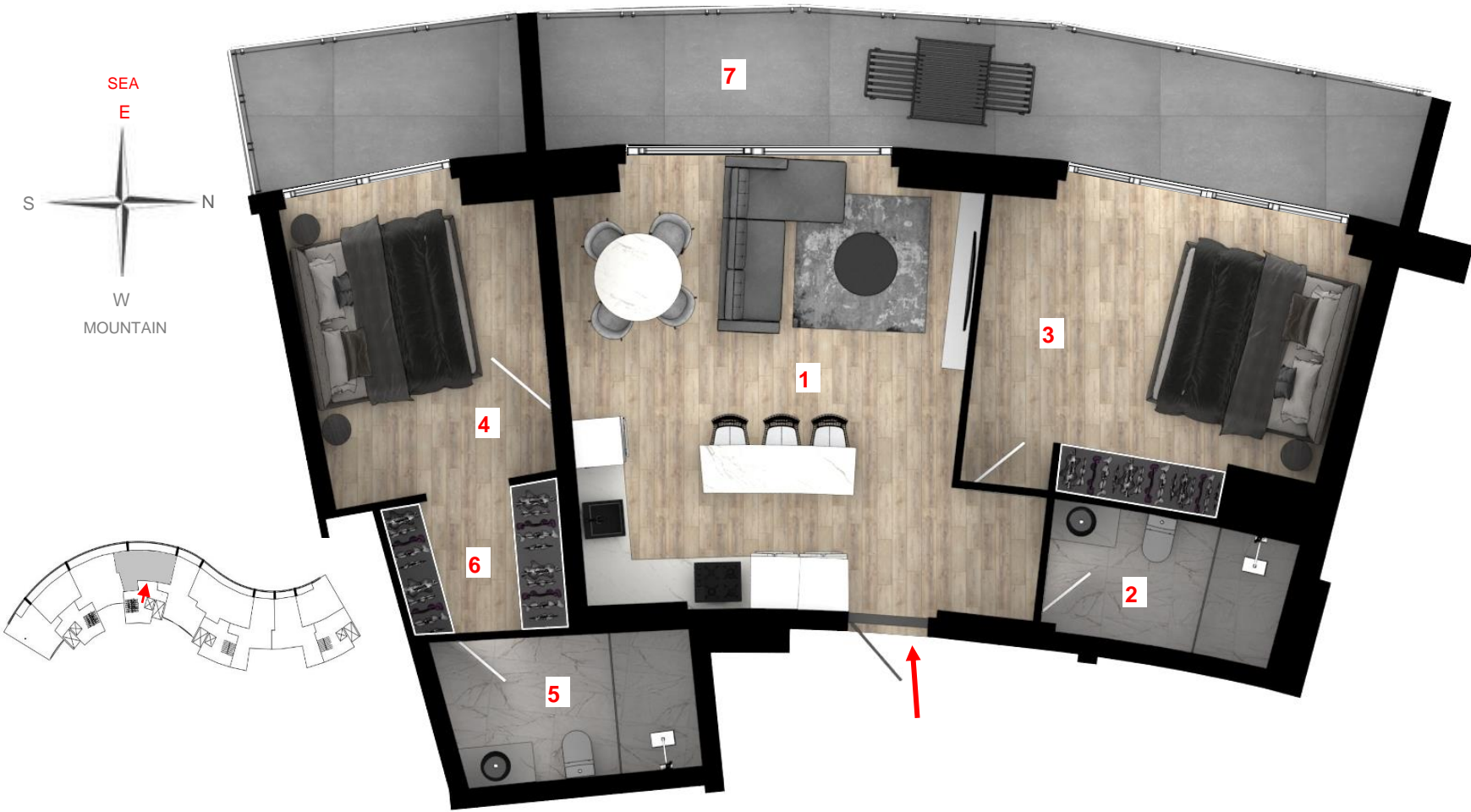
15. FLOOR
F:21503

16. FLOOR
F:21603

*Common Area ; calculated by including elevator halls, floor corridors, fire escape halls and spaces.

*Overall Gross Area ; calculated by including wall thicknesses, common areas and terraces.

*The investor reserves the right to make any technical change on the plan as it deems. The total usage area provided remains constant. Area square meters were calculated by including wall thicknesses.



TYPE 15 2+1 OPEN KITCHEN

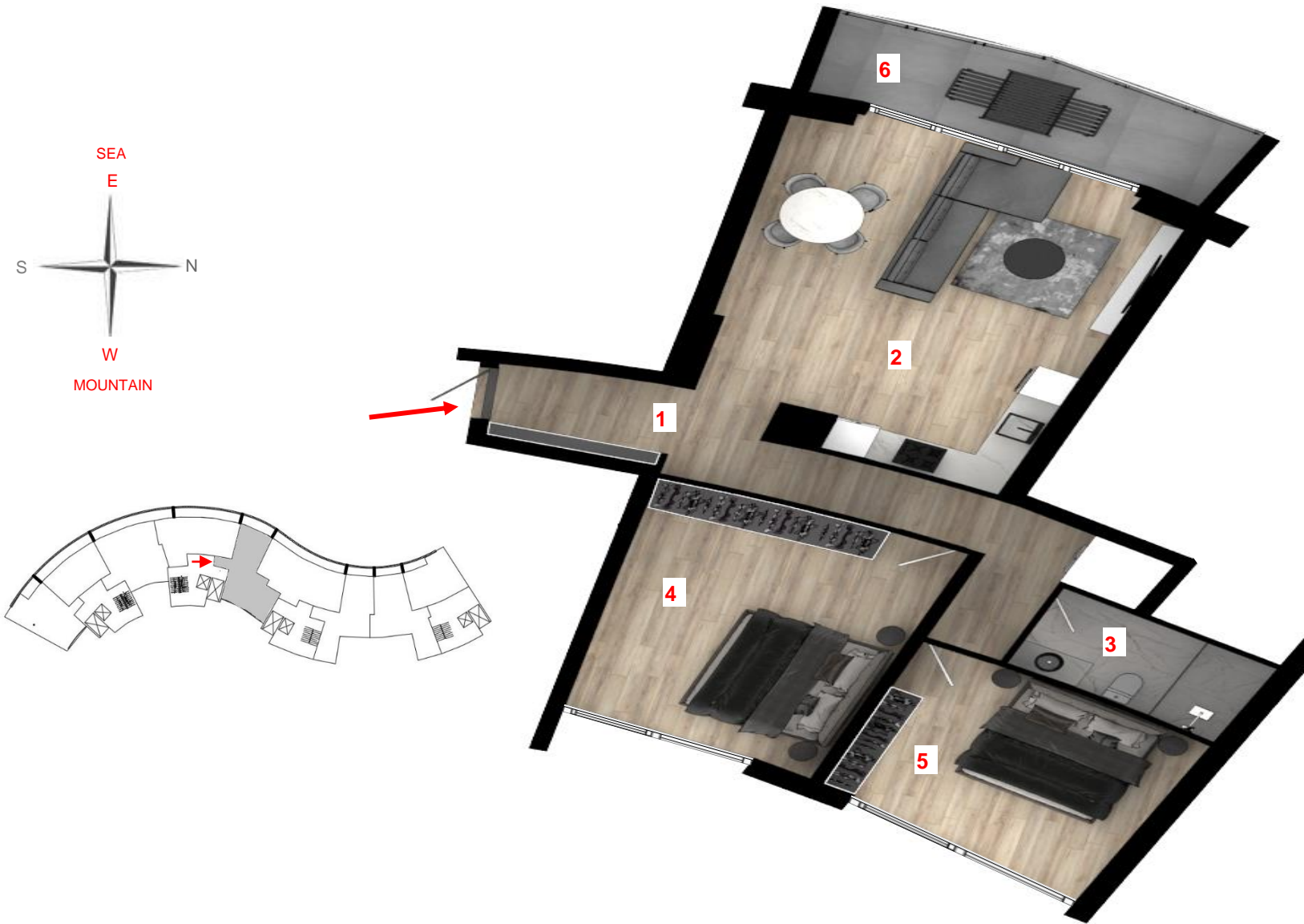
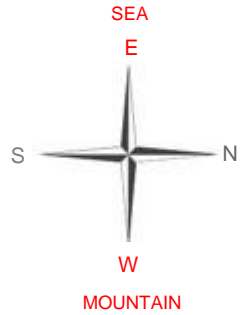
1. Kitchen and Living room	27.4 m2
2. Bathroom	5 m2
3. Bedroom I	17.2 m2
4. Bedroom II	11.4 m2
5. Bedroom II Bathroom	5.5 m2
6. Bedroom II Closet Room	3.6 m2
7. Terrace	19 m2

Closed Area	102 m2
Common Area	10 m2
Overall Gross Area	112 m2

- 2.BLOCK
- 6. FLOOR F:2604
- 7. FLOOR F:2704
- 8. FLOOR F:2804
- 9. FLOOR F:2904
- 10. FLOOR F:21004
- 11. FLOOR F:21104
- 12. FLOOR F:21204
- 13. FLOOR F:21304
- 14. FLOOR F:21404
- 15. FLOOR F:21504
- 16. FLOOR F:21604

*Common Area ; calculated by including elevator halls, floor corridors, fire escape halls and spaces.
 *Overall Gross Area ; calculated by including wall thicknesses, common areas and terraces.
 *The investor reserves the right to make any technical change on the plan as it deems. The total usage area provided remains constant. Area square meters were calculated by including wall thicknesses.





TYPE 16 2+1 OPEN KITCHEN

1. Entrance Hall	6 m ²
2. Kitchen and Living Room	30 m ²
3. Bathroom	5 m ²
4. Bedroom I	18.4 m ²
5. Bedroom II	13.7 m ²
6. Terrace	20.3 m ²

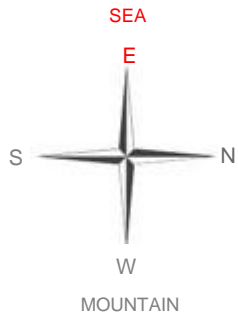
Closed Area	104 m ²
Common Area	10 m ²
Overall Gross Area	114 m²

2.BLOCK 6. FLOOR 7. FLOOR 8. FLOOR 9. FLOOR 10. FLOOR 11. FLOOR 12. FLOOR 13. FLOOR 14. FLOOR 15. FLOOR 16. FLOOR
 F:2605 F:2705 F:2805 F:2905 F:21005 F:21105 F:21205 F:21305 F:21405 F:21505 F:21605

*Common Area ; calculated by including elevator halls, floor corridors, fire escape halls and spaces.

*Overall Gross Area ; calculated by including wall thicknesses, common areas and terraces.

*The investor reserves the right to make any technical change on the plan as it deems. The total usage area provided remains constant. Area square meters were calculated by including wall thicknesses.



TYPE 17 3+1 OPEN KITCHEN

1. Kitchen and Living Room	28.6 m ²
2. Bathroom I	6.5 m ²
3. Bathroom II	6.9 m ²
4. Bedroom I	14.3 m ²
5. Bedroom II	11.7 m ²
6. Bedroom III	8.4 m ²
7. Terrace	20.6 m ²

Closed Area	119 m ²
Common Area	10 m ²
Overall Gross Area	129 m²

2.BLOCK 6. FLOOR 7. FLOOR 8. FLOOR 9. FLOOR 10. FLOOR 11. FLOOR 12. FLOOR 13. FLOOR 14. FLOOR 15. FLOOR 16. FLOOR
 F:2606 F:2706 F:2806 F:2906 F:21006 F:21106 F:21206 F:21306 F:21406 F:21506 F:21606

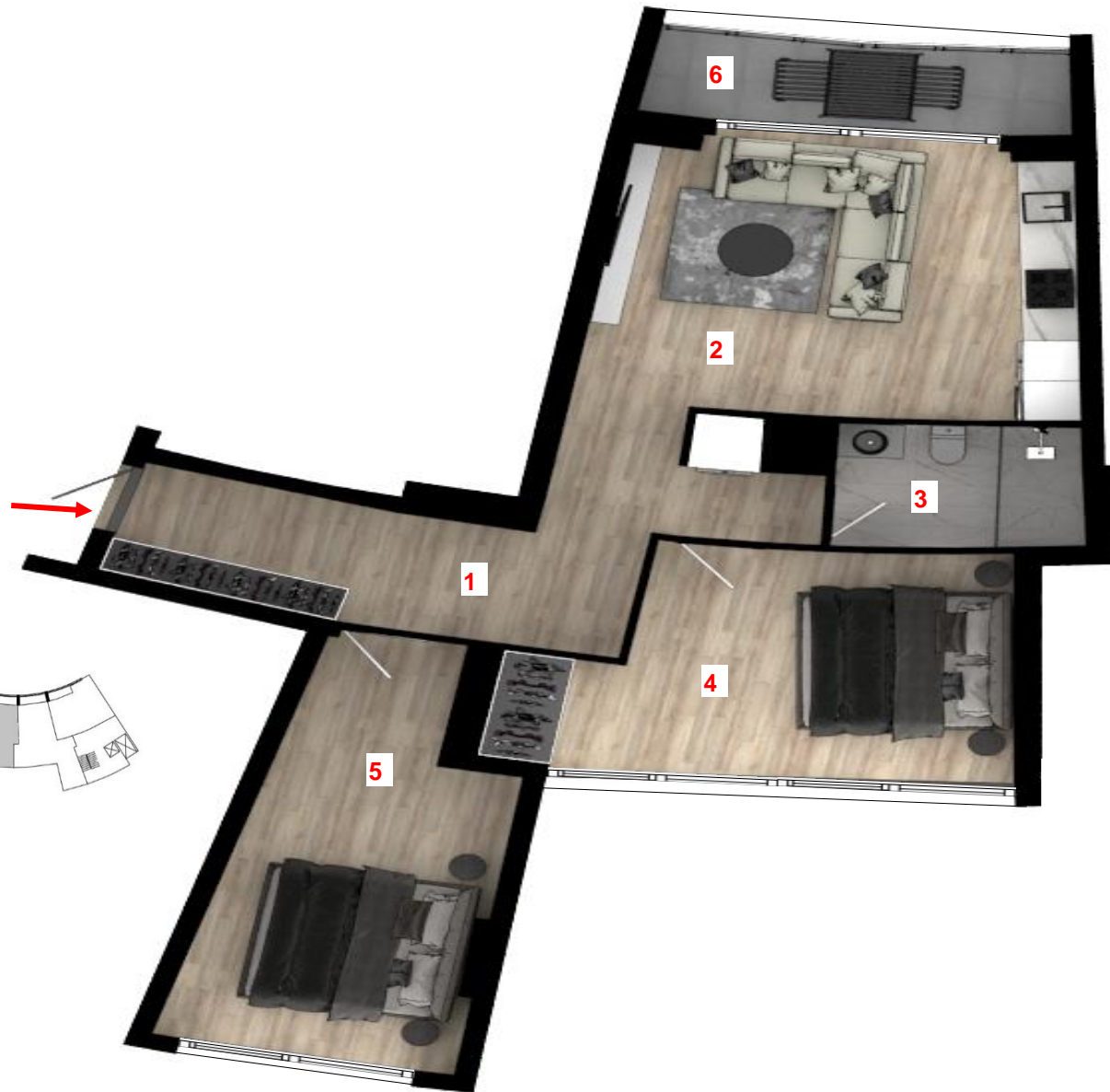
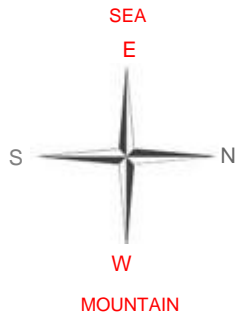
*Common Area ; calculated by including elevator halls, floor corridors, fire escape halls and spaces.

*Overall Gross Area ; calculated by including wall thicknesses, common areas and terraces.

*The investor reserves the right to make any technical change on the plan as it deems. The total usage area provided remains constant. Area square meters were calculated by including wall thicknesses.

Vistamare RESIDENCES

ISKELE - LONG BEACH



TYPE 18 2+1 OPEN KITCHEN

1. Entrance Hallway	13 m2
2. Kitchen and Living Room	20 m2
3. Bathroom	5 m2
4. Bedroom I	16 m2
5. Bedroom II	16 m2
6. Terrace	6.8 m2

Closed Area	93 m2
Common Area	10 m2
Overall Gross Area	103 m2

2.BLOCK	6. FLOOR	7. FLOOR	8. FLOOR	9. FLOOR	10. FLOOR	11. FLOOR	12. FLOOR	13. FLOOR	14. FLOOR	15. FLOOR	16. FLOOR
	F:2607	F:2707	F:2807	F:2907	F:21007	F:21107	F:21207	F:21307	F:21407	F:21507	F:21607

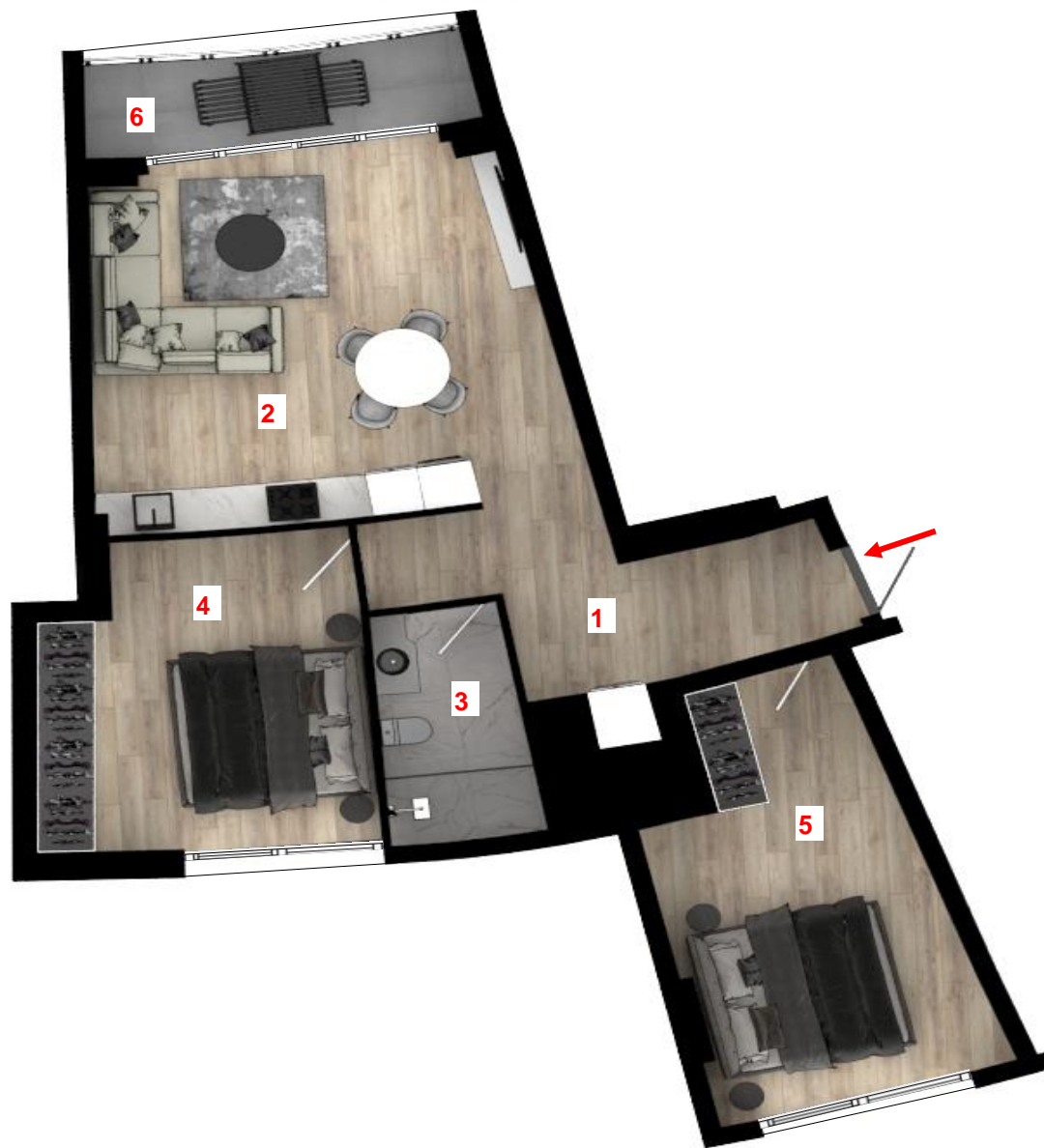
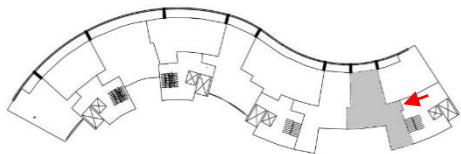
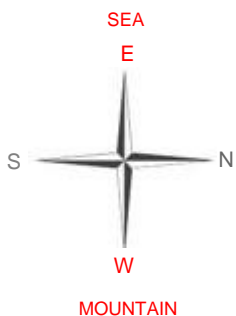
*Common Area ; calculated by including elevator halls, floor corridors, fire escape halls and spaces.

*Overall Gross Area ; calculated by including wall thicknesses, common areas and terraces.

*The investor reserves the right to make any technical change on the plan as it deems. The total usage area provided remains constant. Area square meters were calculated by including wall thicknesses.

Vistamare RESIDENCES

ISKELE - LONG BEACH



TYPE 19 2+1 OPEN KITCHEN

1. Entrance Hallway	10 m ²
2. Kitchen and Living Room	26.7 m ²
3. Bathroom	5 m ²
4. Bedroom I	15.6 m ²
5. Bedroom II	18 m ²
6. Terrace	6.7 m ²

Closed Area	96 m ²
Common Area	10 m ²
Overall Gross Area	106 m²

2.BLOCK 6. FLOOR 7. FLOOR 8. FLOOR 9. FLOOR 10. FLOOR 11. FLOOR 12. FLOOR 13. FLOOR 14. FLOOR 15. FLOOR 16. FLOOR
 F:2608 F:2708 F:2808 F:2908 F:21008 F:21108 F:21208 F:21308 F:21408 F:21508 F:21608

*Common Area ; calculated by including elevator halls, floor corridors, fire escape halls and spaces.

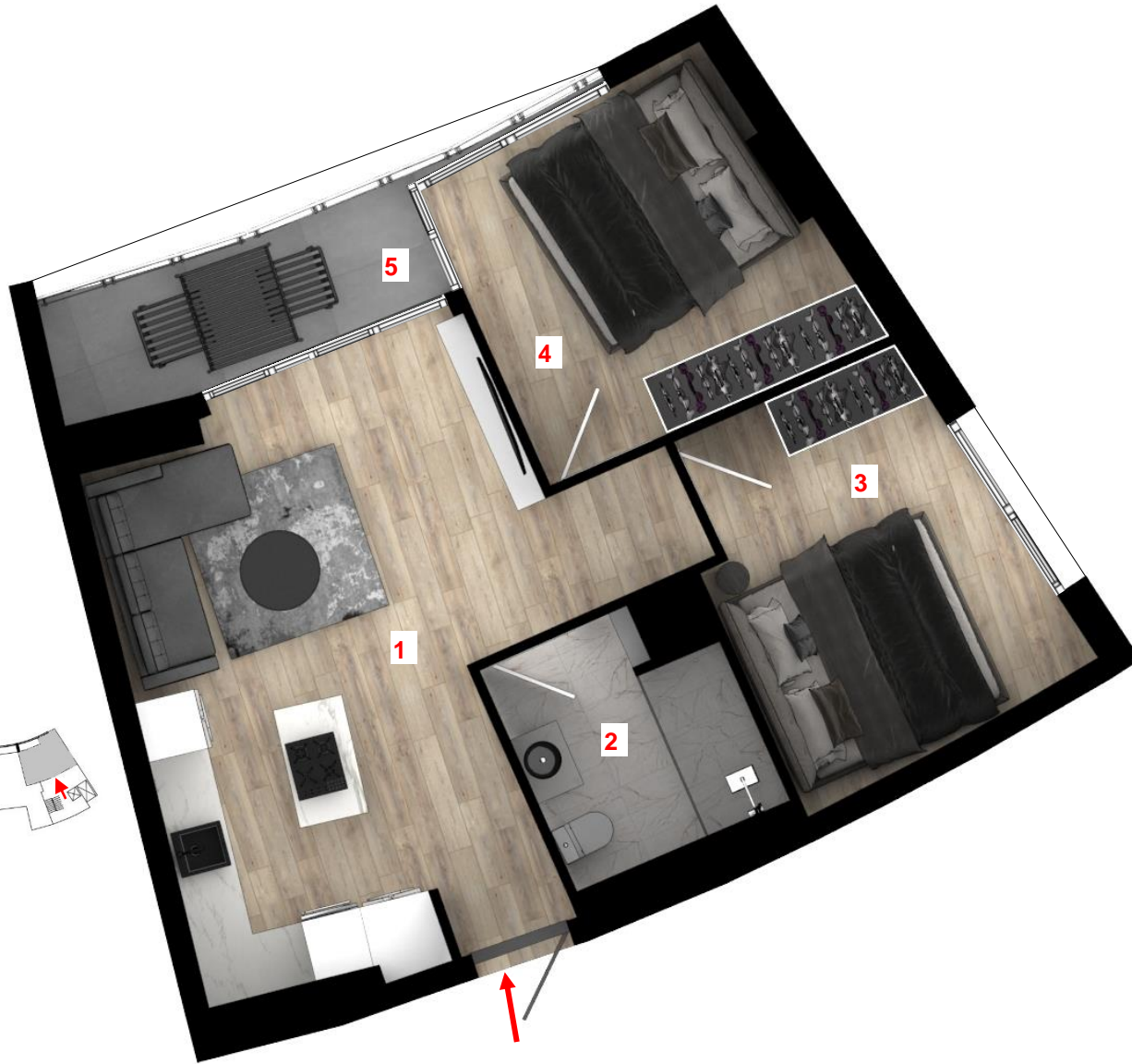
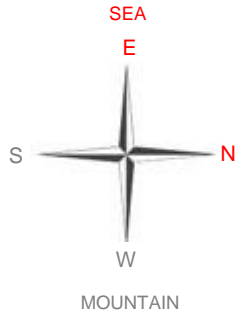
*Overall Gross Area ; calculated by including wall thicknesses, common areas and terraces.

*The investor reserves the right to make any technical change on the plan as it deems. The total usage area provided remains constant. Area square meters were calculated by including wall thicknesses.



Vistamare RESIDENCES

ISKELE - LONG BEACH



TYPE 20 2+1 OPEN KITCHEN

1. Kitchen and Living Room	23.5 m ²
2. Bathroom	5 m ²
3. Bedroom I	11.2 m ²
4. Bedroom II	11 m ²
5. Terrace	5.8 m ²

Closed Area	68 m ²
Common Area	10 m ²
Overall Gross Area	78 m²

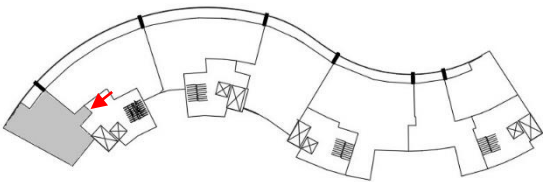
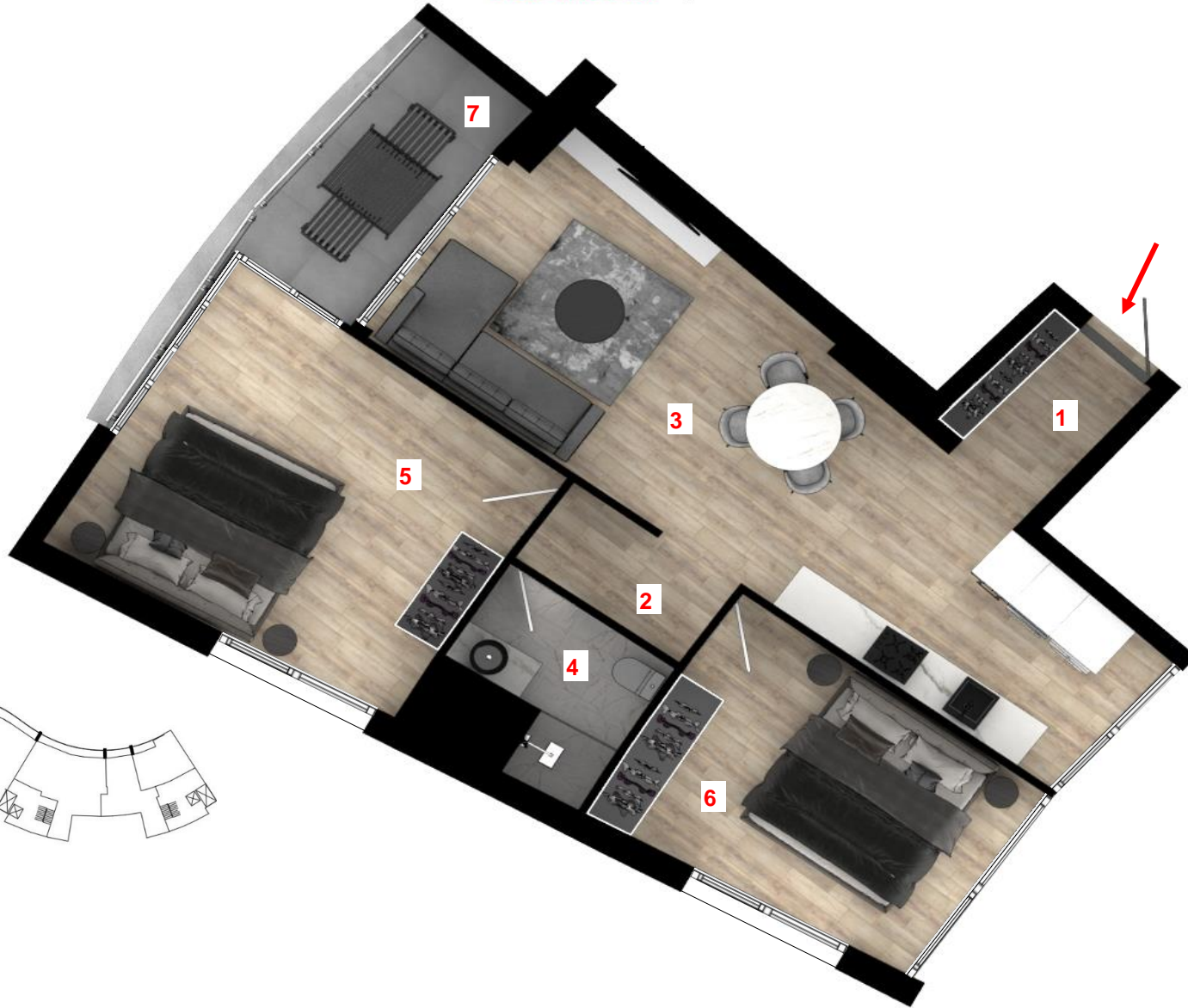
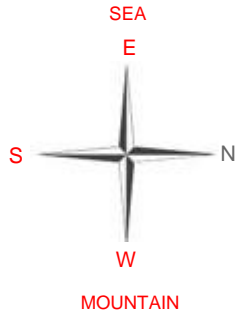
2.BLOCK 6. FLOOR 7. FLOOR 8. FLOOR 9. FLOOR 10. FLOOR 11. FLOOR 12. FLOOR 13. FLOOR 14. FLOOR 15. FLOOR 16. FLOOR
 F:2609 F:2709 F:2809 F:2909 F:21009 F:21109 F:21209 F:21309 F:21409 F:21509 F:21609

*Common Area ; calculated by including elevator halls, floor corridors, fire escape halls and spaces.

*Overall Gross Area ; calculated by including wall thicknesses, common areas and terraces.

*The investor reserves the right to make any technical change on the plan as it deems. The total usage area provided remains constant. Area square meters were calculated by including wall thicknesses.





TYPE 21 2+1 OPEN KITCHEN

1. Entrance Hallway	3 m ²
2. Hallway	3 m ²
3. Kitchen and Living Room	28 m ²
4. Bathroom	4 m ²
5. Bedroom I	18 m ²
6. Bedroom II	13 m ²
7. Terrace	14.8 m ²

Closed Area	88 m ²
Common Area	10 m ²
Overall Gross Area	98 m²

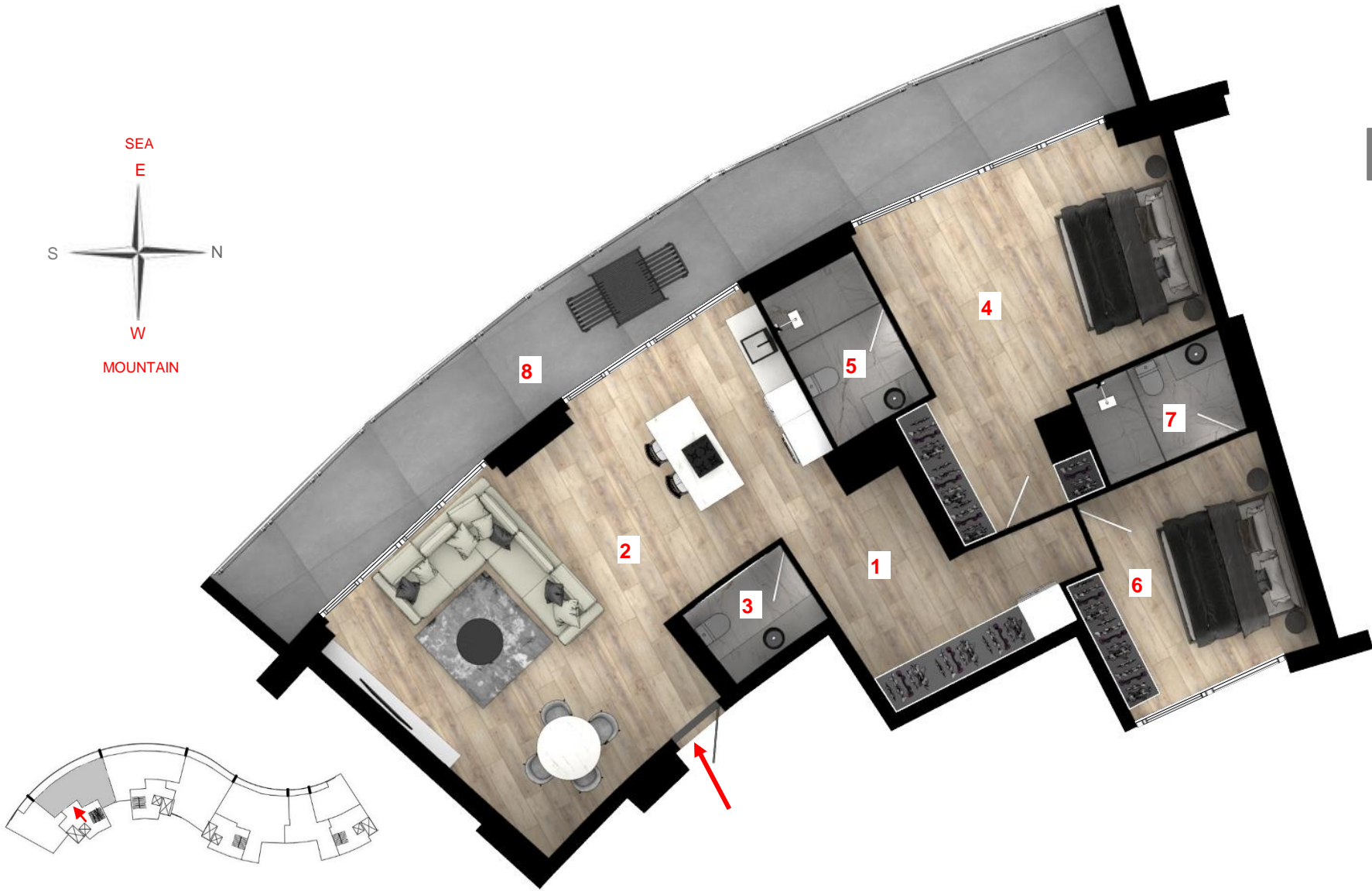
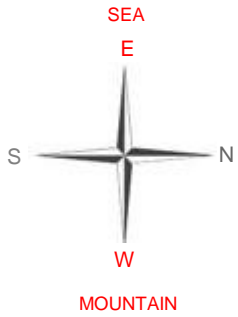
2.BLOCK

17. FLOOR
F:21701

*Common Area ; calculated by including elevator halls, floor corridors, fire escape halls and spaces.

*Overall Gross Area ; calculated by including wall thicknesses, common areas and terraces.

*The investor reserves the right to make any technical change on the plan as it deems. The total usage area provided remains constant. Area square meters were calculated by including wall thicknesses.



TYPE 22 2+1 OPEN KITCHEN

1. Hallway	10.5 m ²
2. Kitchen and Living Room	42.3 m ²
3. Bathroom	3 m ²
4. Bedroom I	25.4 m ²
5. Bedroom I Bathroom	5 m ²
6. Bedroom II	13.4 m ²
7. Bedroom II Bathroom	4.4 m ²
8. Terrace	32.4 m ²

Closed Area	149 m ²
Common Area	10 m ²
Overall Gross Area	159 m²

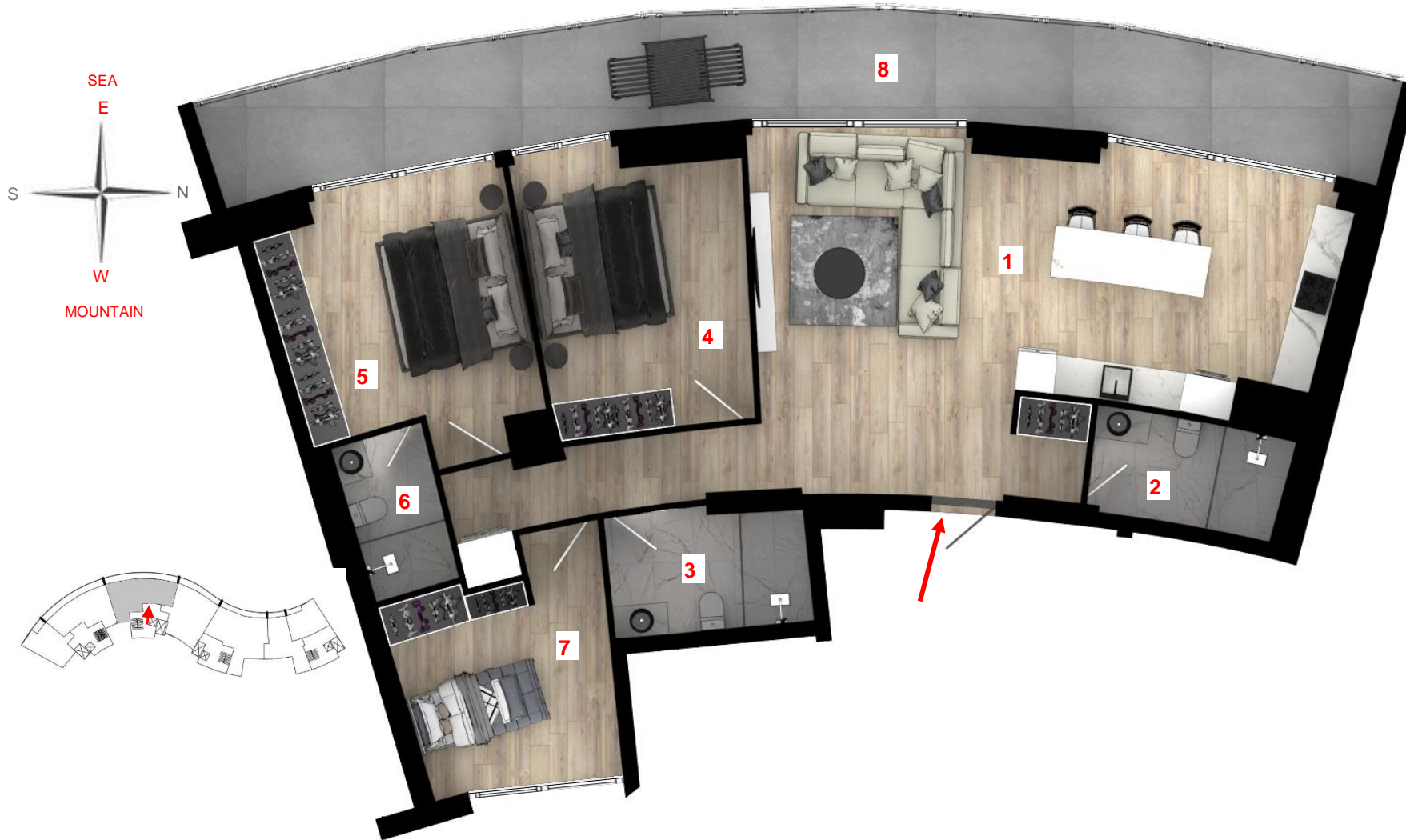
2.BLOCK

17. FLOOR
F:21702

*Common Area ; calculated by including elevator halls, floor corridors, fire escape halls and spaces.

*Overall Gross Area ; calculated by including wall thicknesses, common areas and terraces.

*The investor reserves the right to make any technical change on the plan as it deems. The total usage area provided remains constant. Area square meters were calculated by including wall thicknesses.



TYPE 23 3+1 OPEN KITCHEN

1. Kitchen and Living Room	41 m ²
2. Bathroom I	5 m ²
3. Bathroom II	5.7 m ²
4. Bedroom I	14.4 m ²
5. Bedroom II	15.2 m ²
6. Bedroom II Bathroom	3.5 m ²
7. Bedroom III	11.13 m ²
8. Terrace	32.55 m ²

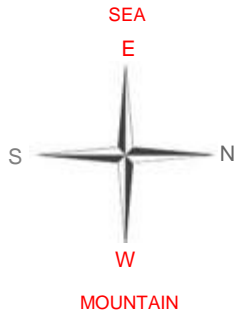
Closed Area	146 m ²
Common Area	10 m ²
Overall Gross Area	156 m²

2.BLOCK

17. FLOOR
F:21703

*Common Area ; calculated by including elevator halls, floor corridors, fire escape halls and spaces.
 *Overall Gross Area ; calculated by including wall thicknesses, common areas and terraces.
 *The investor reserves the right to make any technical change on the plan as it deems. The total usage area provided remains constant. Area square meters were calculated by including wall thicknesses.

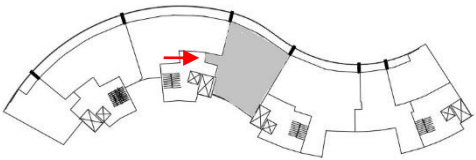




TYPE 24 3+1 OPEN KITCHEN

1. Entrance Hallway	6 m2
2. Kitchen and Living Room	30 m2
3. Bathroom	4.8 m2
4. Bedroom I	17.4 m2
5. Bedroom II	13.8 m2
6. Bedroom III	23.5 m2
7. Bedroom III Bathroom	6.5 m2
8. Terrace	19.7 m2

Closed Area	142 m2
Common Area	10 m2
Overall Gross Area	152 m2



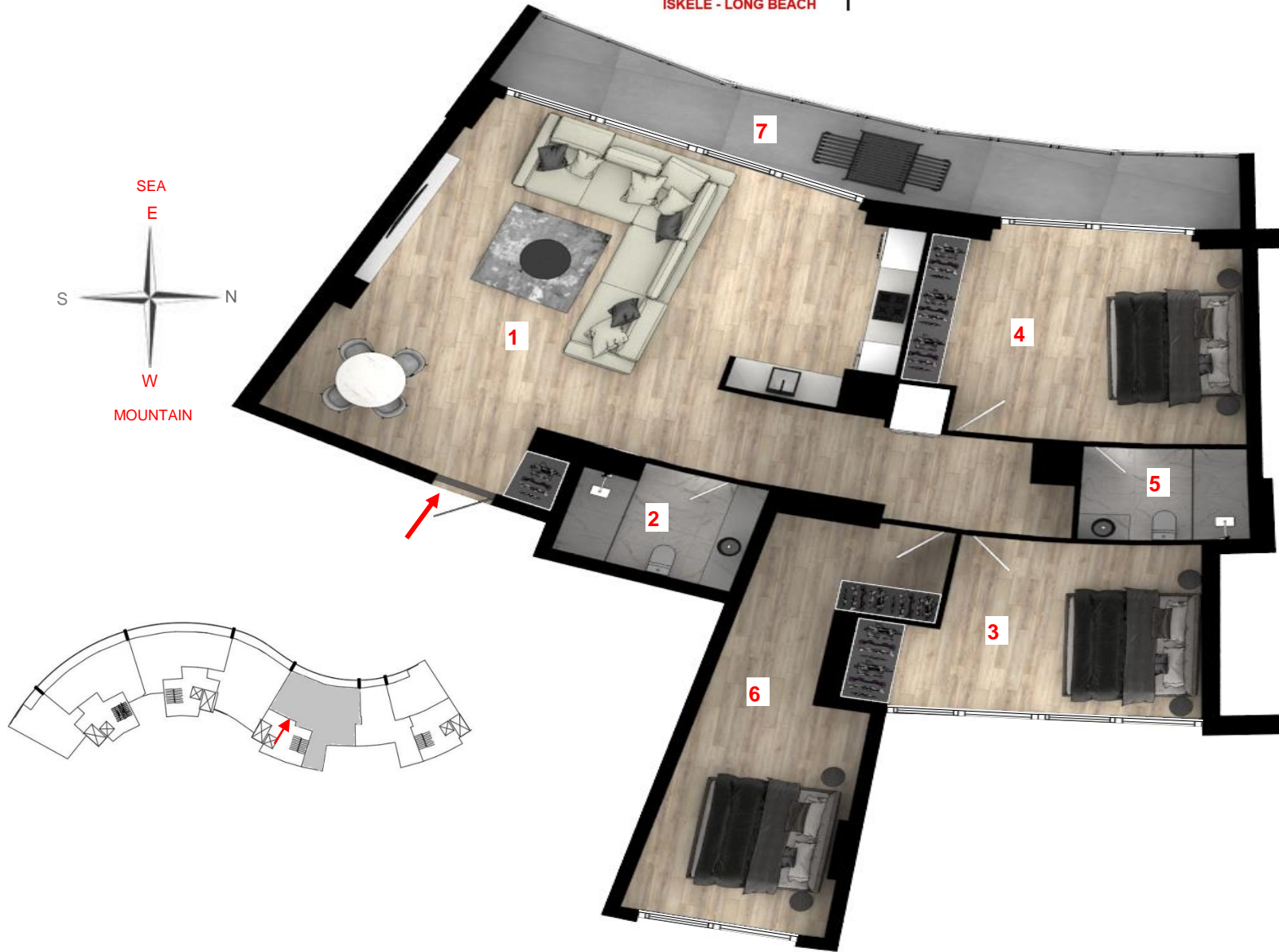
2.BLOCK

17. FLOOR
F:21704

*Common Area ; calculated by including elevator halls, floor corridors, fire escape halls and spaces.

*Overall Gross Area ; calculated by including wall thicknesses, common areas and terraces.

*The investor reserves the right to make any technical change on the plan as it deems. The total usage area provided remains constant. Area square meters were calculated by including wall thicknesses.



TYPE 25 3+1 OPEN KITCHEN

1. Kitchen and Living Room	46.8 m ²
2. Bathroom	5.7 m ²
3. Bedroom I	16 m ²
4. Bedroom II	20.4 m ²
5. Bedroom II Bathroom	4.7 m ²
6. Bedroom III	21.4 m ²
7. Terrace	17.8 m ²

Closed Area	158 m ²
Common Area	10 m ²
Overall Gross Area	168 m²

2.BLOCK

17. FLOOR
F:21705

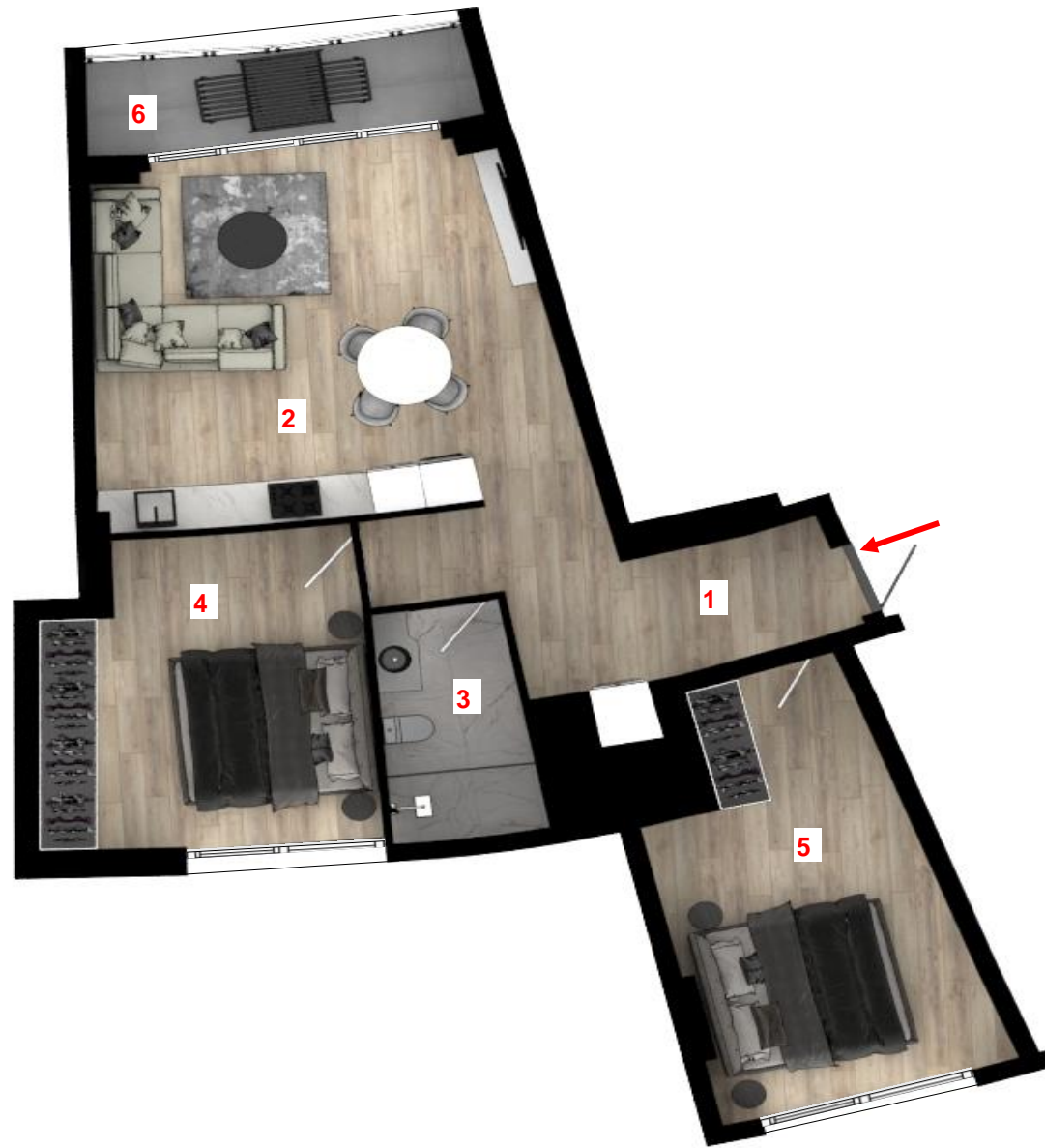
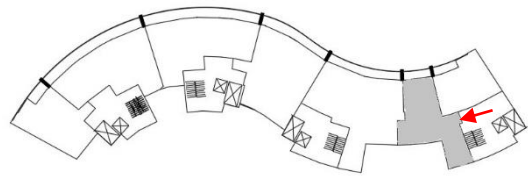
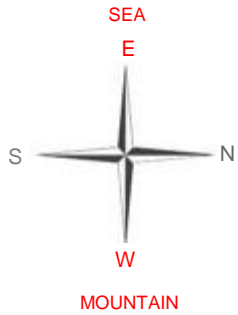
*Common Area ; calculated by including elevator halls, floor corridors, fire escape halls and spaces.

*Overall Gross Area ; calculated by including wall thicknesses, common areas and terraces.

*The investor reserves the right to make any technical change on the plan as it deems. The total usage area provided remains constant. Area square meters were calculated by including wall thicknesses.

Vistamare RESIDENCES

ISKELE - LONG BEACH



TYPE 26 2+1 OPEN KITCHEN

1. Entrance Hallway	10 m ²
2. Kitchen and Living Room	26.5 m ²
3. Bathroom	5.3 m ²
4. Bedroom I	15.5 m ²
5. Bedroom II	17 m ²
6. Terrace	6.6 m ²

Closed Area	89 m ²
Common Area	10 m ²
Overall Gross Area	99 m²

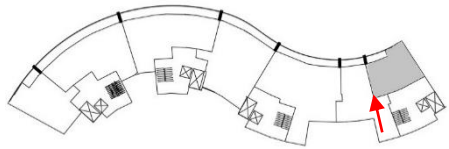
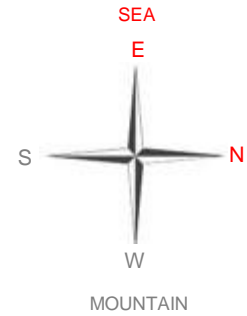
2. BLOCK

17. FLOOR
F:21706

*Common Area ; calculated by including elevator halls, floor corridors, fire escape halls and spaces.

*Overall Gross Area ; calculated by including wall thicknesses, common areas and terraces.

*The investor reserves the right to make any technical change on the plan as it deems. The total usage area provided remains constant. Area square meters were calculated by including wall thicknesses.



TYPE 27 2+1 OPEN KITCHEN

1. Kitchen and Living Room	23.5 m ²
2. Bathroom	3.8 m ²
3. Bedroom I	11.2 m ²
4. Bedroom II	12.5 m ²
5. Terrace	5.8 m ²

Closed Area	68 m ²
Common Area	10 m ²
Overall Gross Area	78 m²

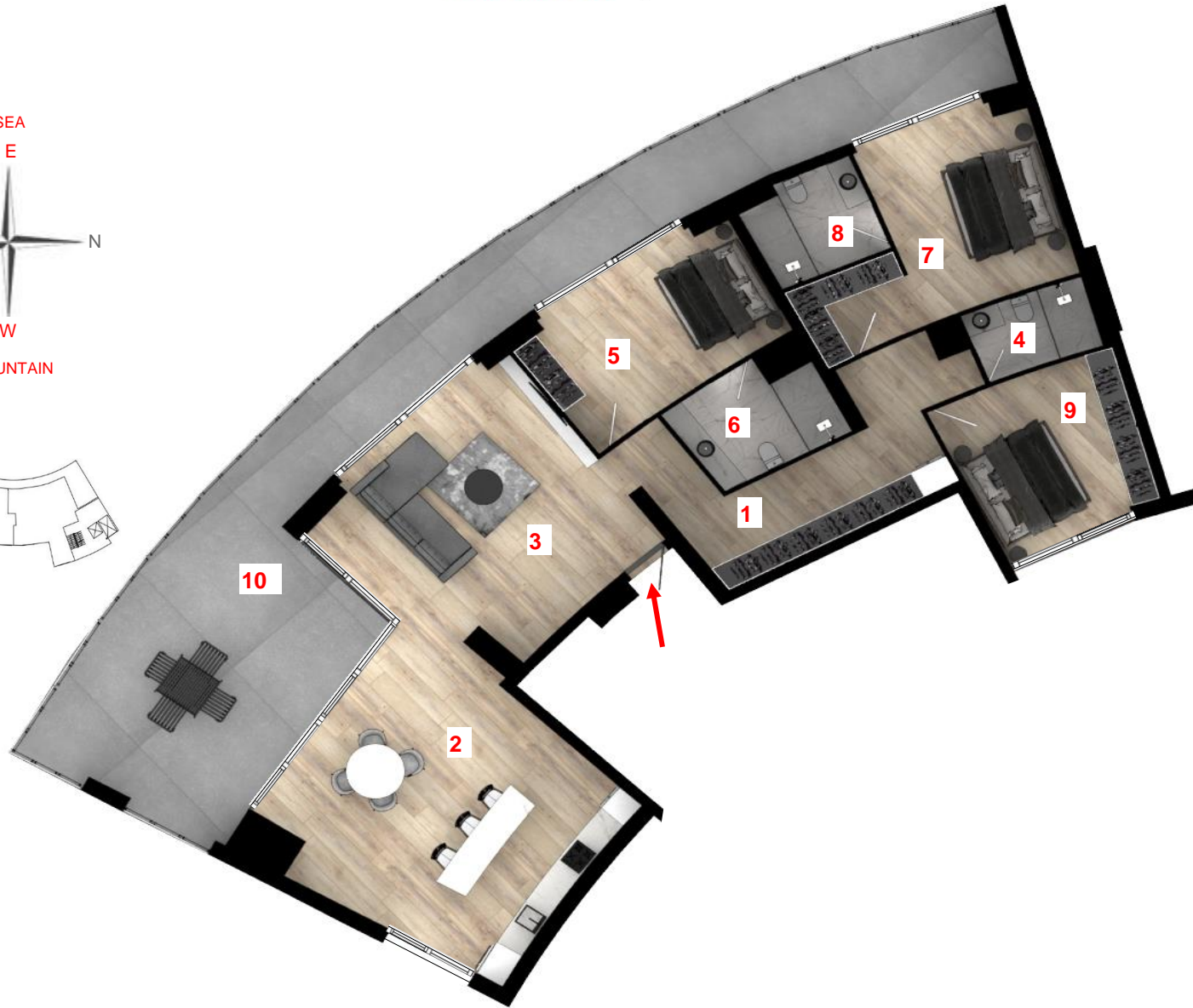
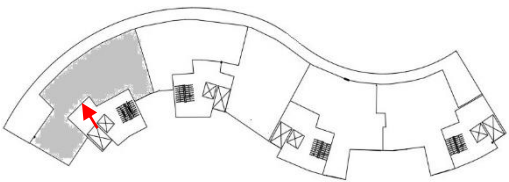
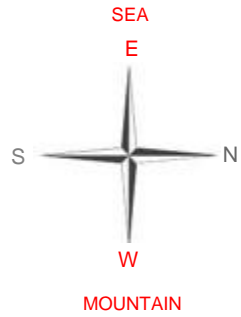
2.BLOCK

17. FLOOR
F :21707

*Common Area ; calculated by including elevator halls, floor corridors, fire escape halls and spaces.

*Overall Gross Area ; calculated by including wall thicknesses, common areas and terraces.

*The investor reserves the right to make any technical change on the plan as it deems. The total usage area provided remains constant. Area square meters were calculated by including wall thicknesses.



TYPE 28 3+1 OPEN KITCHEN

1. Hallway	18,5 m ²
2. Kitchen	36 m ²
3. Living Room	30 m ²
4. Bathroom	4 m ²
5. Bedroom I	16.1 m ²
6. Bedroom I Bathroom	6.5 m ²
7. Bedroom II	19.5 m ²
8. Bedroom II Bathroom	5.4 m ²
9. Bedroom III	13.5 m ²
10. Terrace	69 m ²

Closed Area	241 m ²
Common Area	10 m ²
Overall Gross Area	251 m²

2. BLOCK

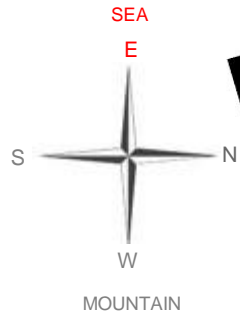
18. FLOOR
F:21801

19. FLOOR
F:21901

*Common Area ; calculated by including elevator halls, floor corridors, fire escape halls and spaces.

*Overall Gross Area ; calculated by including wall thicknesses, common areas and terraces.

*The investor reserves the right to make any technical change on the plan as it deems. The total usage area provided remains constant. Area square meters were calculated by including wall thicknesses.



TYPE 29 3+1 OPEN KITCHEN

1. Kitchen and Living Room	38.3 m ²
2. Bathroom	5.5 m ²
3. Bedroom I	13.3 m ²
4. Bedroom II	14.3 m ²
5. Bedroom II Bathroom	4.5 m ²
6. Bedroom II Closet Room	6.2 m ²
7. Bedroom III	12.8 m ²
8. Terrace	32 m ²

Closed Area	150 m ²
Common Area	10 m ²
Overall Gross Area	160 m²

2.BLOCK

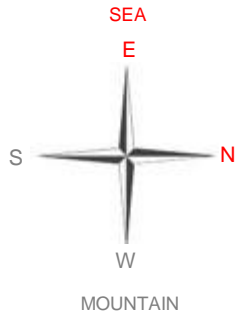
18. FLOOR
F:21802

19. FLOOR
F:21902

*Common Area ; calculated by including elevator halls, floor corridors, fire escape halls and spaces.

*Overall Gross Area ; calculated by including wall thicknesses, common areas and terraces.

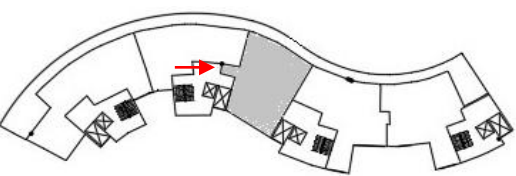
*The investor reserves the right to make any technical change on the plan as it deems. The total usage area provided remains constant. Area square meters were calculated by including wall thicknesses.



TYPE 30 3+1 OPEN KITCHEN

1. Hallway	6 m2
2. Kitchen and Living Room	30 m2
3. Bathroom	7 m2
4. Bedroom I	19.5 m2
5. Bedroom II	17.7 m2
6. Bedroom III	19.5 m2
7. Bedroom III Bathroom	4.5 m2
8. Bedroom III Closet Room	2.8 m2
9. Terrace	19.7 m2

Closed Area	146 m2
Common Area	10 m2
Overall Gross Area	156 m2



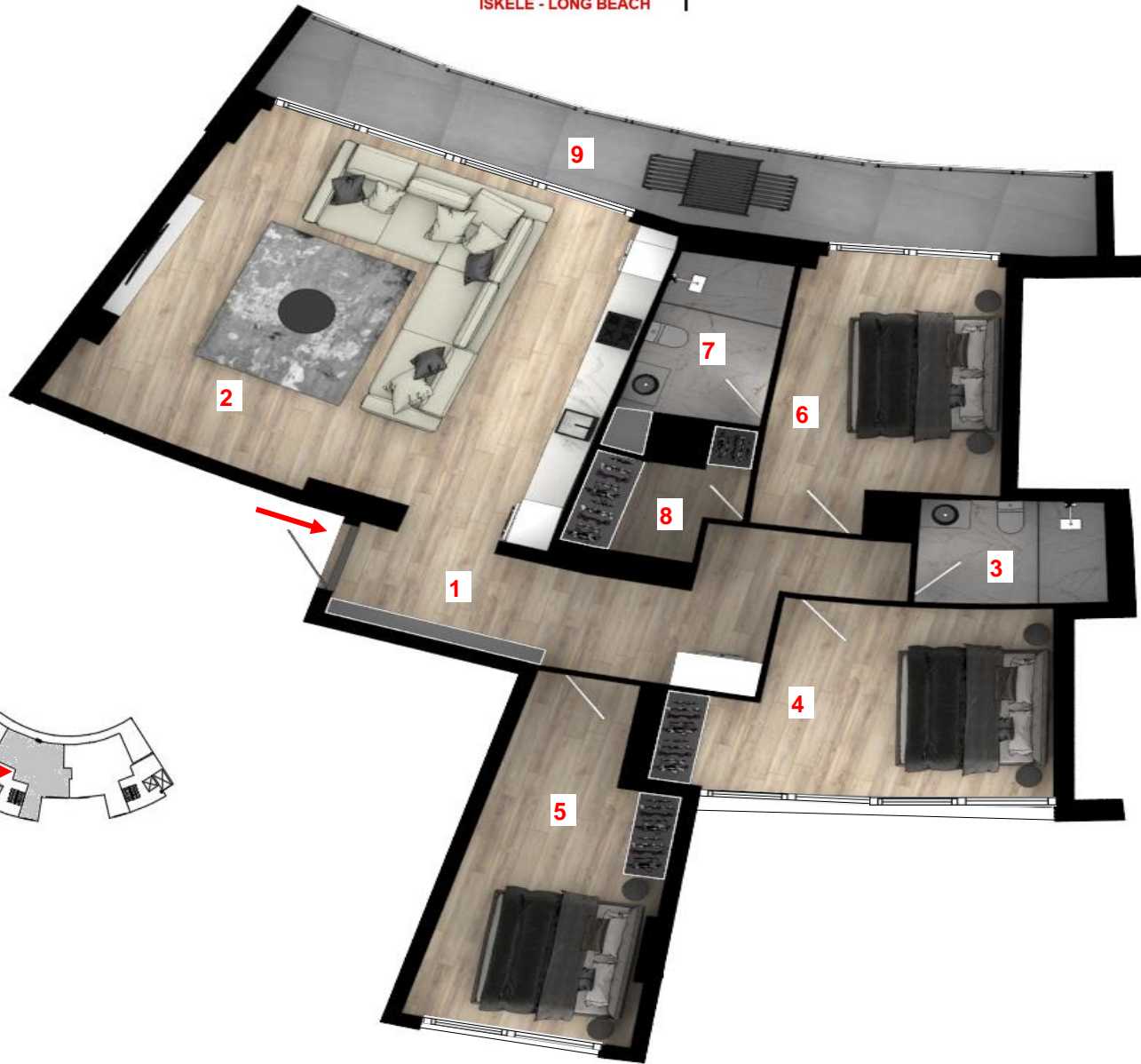
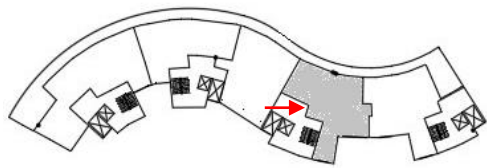
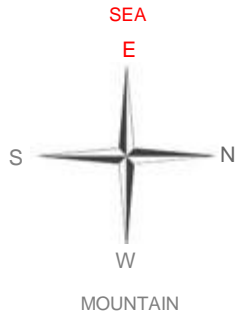
2.BLOCK

18. FLOOR
F:21803

19. FLOOR
F:21903

*Common Area ; calculated by including elevator halls, floor corridors, fire escape halls and spaces.
 *Overall Gross Area ; calculated by including wall thicknesses, common areas and terraces.
 *The investor reserves the right to make any technical change on the plan as it deems. The total usage area provided remains constant. Area square meters were calculated by including wall thicknesses.





TYPE 31 3+1 OPEN KITCHEN

1. Hallway	13 m2
2. Kitchen and Living Room	42.7 m2
3. Bathroom	4.8 m2
4. Bedroom I	16.8 m2
5. Bedroom II	16 m2
6. Bedroom III	14.3 m2
7. Bedroom III Bathroom	5.7 m2
8. Bedroom III Closet Room	3.6 m2
9. Terrace	17.8 m2

Closed Area	158 m2
Common Area	10 m2
Overall Gross Area	168 m2

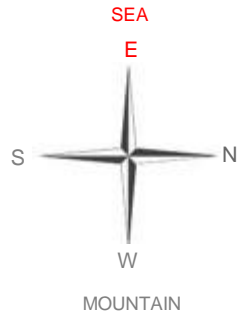
2.BLOCK

18. FLOOR
F:21804

19. FLOOR
F:21904

*Common Area ; calculated by including elevator halls, floor corridors, fire escape halls and spaces.
 *Overall Gross Area ; calculated by including wall thicknesses, common areas and terraces.
 *The investor reserves the right to make any technical change on the plan as it deems. The total usage area provided remains constant. Area square meters were calculated by including wall thicknesses.





TYPE 32 3+1 OPEN KITCHEN

1. Hallway	5 m2
2. Kitchen and Living Room	37 m2
3. Bathroom	5.3 m2
3. Bedroom I	15.7 m2
4. Bedroom II	20.4 m2
5. Bedroom III	13.4 m2
6. Bedroom III Bathroom	4.2 m2
7. Bedroom III Closet Room	6.3 m2
8. Terrace	42 m2

Closed Area	163 m2
Common Area	10 m2
Overall Gross Area	173 m2

2.BLOCK

18. FLOOR
F:21805

19. FLOOR
F:21905

*Common Area ; calculated by including elevator halls, floor corridors, fire escape halls and spaces.

*Overall Gross Area ; calculated by including wall thicknesses, common areas and terraces.

*The investor reserves the right to make any technical change on the plan as it deems. The total usage area provided remains constant. Area square meters were calculated by including wall thicknesses.