



VERDANA II
RESIDENCE

إطلالة على الحياة
LIFE WITH A VIEW



ريپورتاج العقارية
Reportage.
Properties

ABOUT REPORTAGE

Reportage Properties is one of the largest private developers in the United Arab Emirates, with projects in UAE, Egypt, Turkey, Morocco, and upcoming international projects.

We are focused and consistent in our objective to provide innovative, modern, and affordable housing solutions that not only offer our investors an outstanding value but also provide the home buyers a safe place to live in.

Our mission is to be amongst the most trusted real estate companies in the UAE by developing and providing homes that are equally elegant and affordable and provide you with a sense of belonging. We look forward to the upcoming years, and aspire to expand our real estate business globally.

We Build
Homes With
Unparalleled
Elegance and
Comfort.



ريپورتاج العقارية

تمثل شركة ريبورتاج العقارية واحدة من أكبر مطوري العقارات الخاصة في دولة الإمارات العربية المتحدة بمشروعات قائمة في أبوظبي ودبي و مصر و تركيا و المغرب، و مشاريع دولية أخرى ضمن الخطة.

وتركز الشركة في هدفها المتمثل في تقديم حلول إسكان مبتكرة وحديثة وبأسعار في المتناول، وهي حلول من شأنها أن توفر قيمة متميزة.

تتمثل مهمة ريبورتاج العقارية في أن تكون أولى شركات العقارات الأكثر ثقة في دولة الإمارات العربية المتحدة، وذلك من خلال تطوير و توفير منازل تجمع بين الأناقة و العملية و متاحة للجميع، و تمنح ساكنيها الشعور بالانتماء. تتطلع بثقة إلى الأعوام القادمة ونطمح إلى توسيع نطاق أعمالنا العقارية على مستوى العالم.

منازل تحظى بمزايا و راحة لا تضاهي



IN THE HEART OF DUBAI NEXT TO GREEN COMMUNITY

Where residents can benefit from the area's strategic location in addition to the community activities. Furthermore, it is well connected to the city's core economic centres and provides quick access to major routes such as Sheikh Zayed Road and Emirates Road, with close proximity to Dubai's attractions.



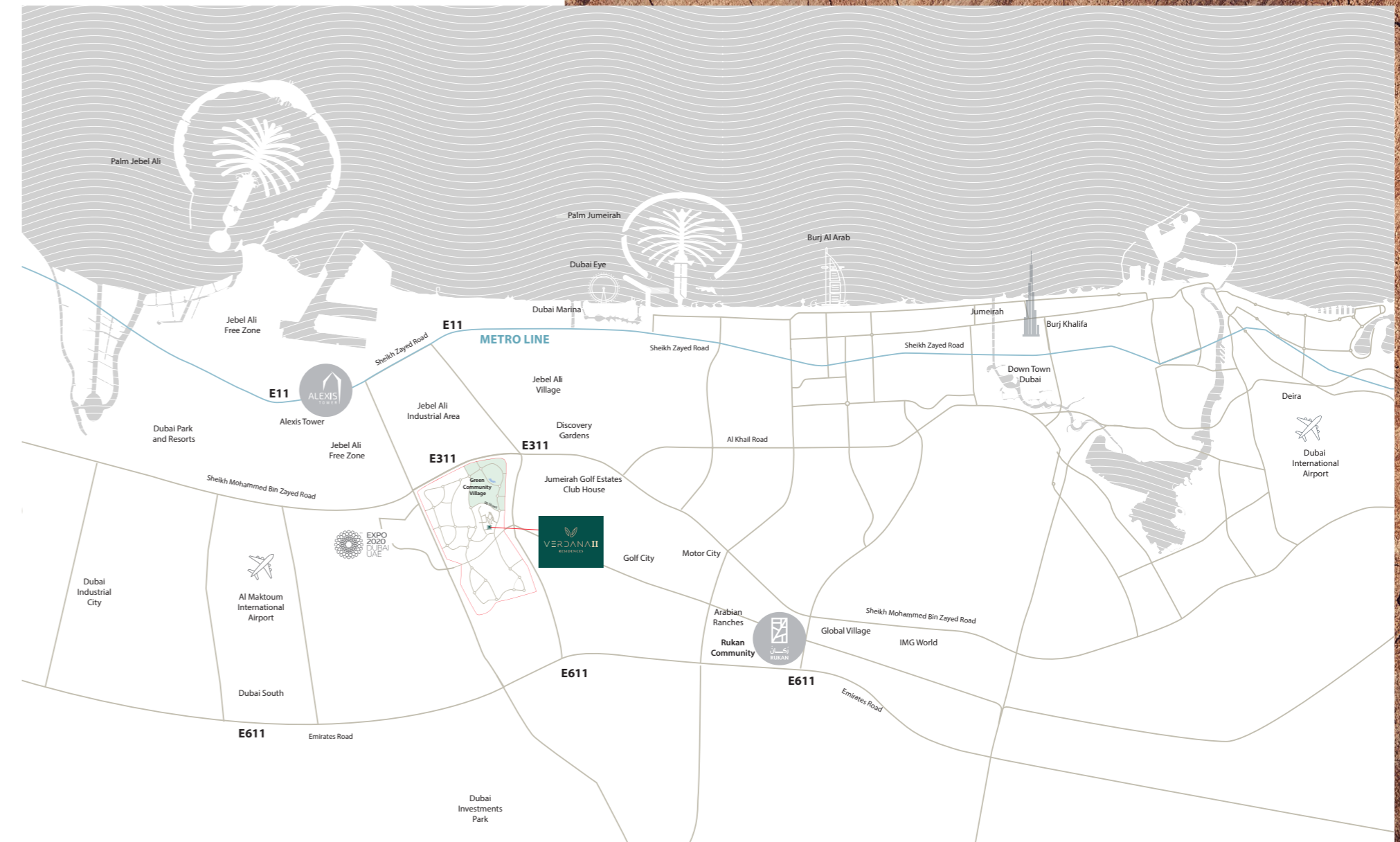
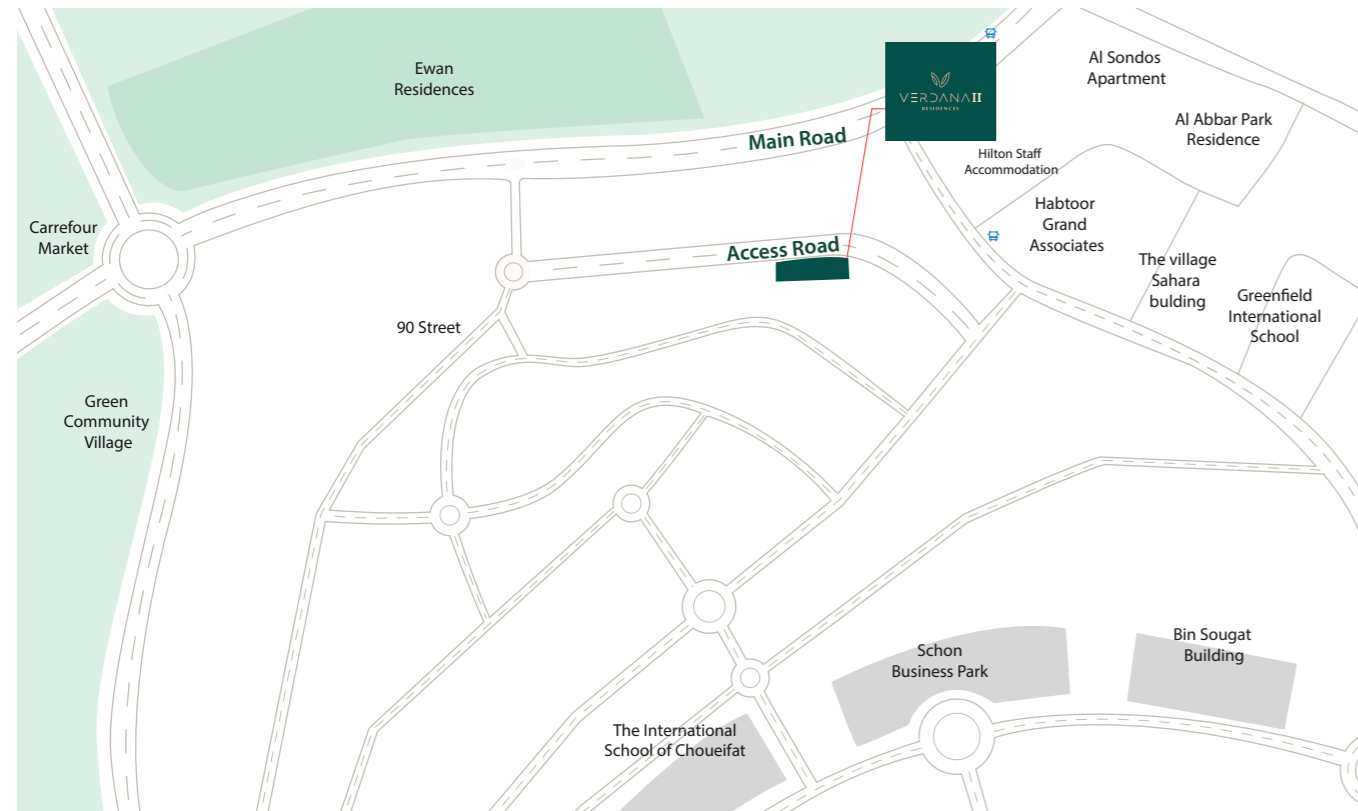
كن على
اتصال بالمستقبل

—
*Stay
Connected to
the future*

في قلب دبي بجوار جرين كوميونيتي

حيث يمكن للسكان الاستفادة من الأنشطة المختلفة و الموقع الاستراتيجي للمنطقة. علاوة على ذلك، فهو يتمتع باتصال جيد بالمراكز الاقتصادية الأساسية في المدينة مع سهولة الوصول إلى الطرق الرئيسية مثل شارع الشيخ زايد و شارع الإمارات، و على مقربة من أشهر معالم دبي.





كن جزءا من الصورة..
 كن على اتصال بالعالم من حولك
 STAY A PART OF THE BIGGER PICTURE..
 STAY CONNECTED TO THE WORLD

18 MIN driving to Dubai Marina
 20 MIN driving to Palm Jumeirah
 21 MIN driving to Global Village
 23 MIN driving to Mall of The Emirates

24 MIN driving to IMG World
 26 MIN driving to Burj Khalifa/Dubai Mall
 18 MIN driving to Dubai Park and Resorts



VERDANA RESIDENCE 2

Another architectural gem is added to the luxury collection of Verdana community. Verdana Residence 2 is a beautiful blend of modernity and natural serene views.

The building offers a contemporary lifestyle for those who seek privacy, functionality and a resort-like living experience within the bustling life of Dubai, all with high-quality finishing, modern facades, and world-class facilities that brings the all the city life to your doorstep.

فيردانا ريزيدنس 2

جوهرة معمارية أخرى قد تم إضافتها إلى المجموعة الفاخرة لمجتمع فيردانا. فيردانا ريزيدنس 2 هو مزيج رائع من العصرية والمناظر الطبيعية الهادئة.

يوفر المبنى أسلوب حياة معاصر لأولئك الذين يسعون إلى الخصوصية والعملية وتجربة معيشية تشبه المنتجعات وسط الحياة الصاخبة في دبي، وكل ذلك مع تشطيبات عالية الجودة و واجهات حديثة و وسائل راحة عالمية المستوى تجلب كل حياة المدينة إلى بين يديك.



DESIGN PHILOSOPHY

Masterful Architecture meets the serenity of lush greens and nature's work of art, in a fusion that inspire passion and artistry to create a masterpiece of modernity and elegance. Verdana Residence is skilfully designed to meet the needs of residents seeking both vibrancy and tranquillity, in a home of both elegance and functionality. With an opulent colour palette of earth colours, and a warm touch of wood dominating the elevations, the building perfectly blends with the surrounding views.

فلسفة التصميم

تلتقي براعة الهندسة المعمارية بهدوء الخضرة المورقة وأعمال الطبيعة الفنية، في اندماج يلهم العاطفة والفن لخلق تحفة فنية من الحدائق والرقى. تم تصميم فيردانا ريزيدنس بمهارة لتلبية احتياجات السكان الباحثين عن كل من الحيوية والهدوء، في منزل يتميز بالأناقة والعملية. ومع لوحة الألوان الترابية الراقية، ولمسة الخشب الدافئة التي تهيمن على الواجهات، يمتزج المبنى في تناغم مع المناظر الطبيعية المحيطة.



تناغم عذب لحدائثة التصميم و
جمال الطبيعة

A perfect harmony of modern design
and natural beauty





ارتق بأسلوب حياتك إلى
مستوى جديد من الراحة
و الرفاهية

Elevate your lifestyle to a
whole new level of luxury
and convenience



إطلالات خلابة على
مجتمع فيردانا المميز

Impeccable Views of the
vibrant Verdana community





تصميمات إيطالية حديثة تضي
لمسة من الفخامة و الرقي

Modern Italian designs that evoke
a sense of luxury and refinement



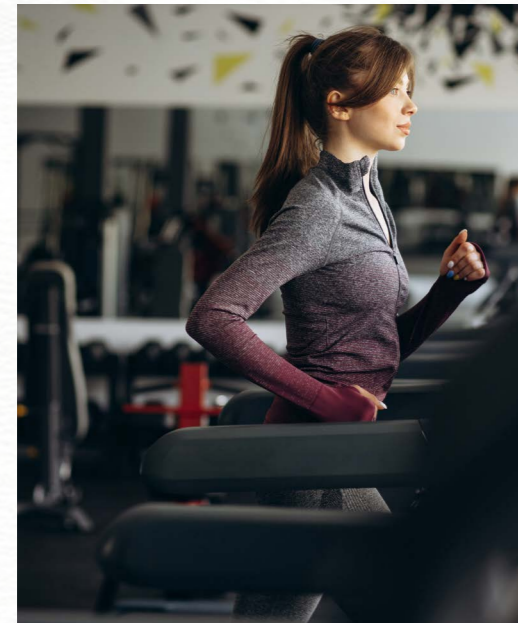


اكتشف منزلاً بجمال من الداخل كما هو من الخارج، و اختبر
الراحة في أبهى صورها

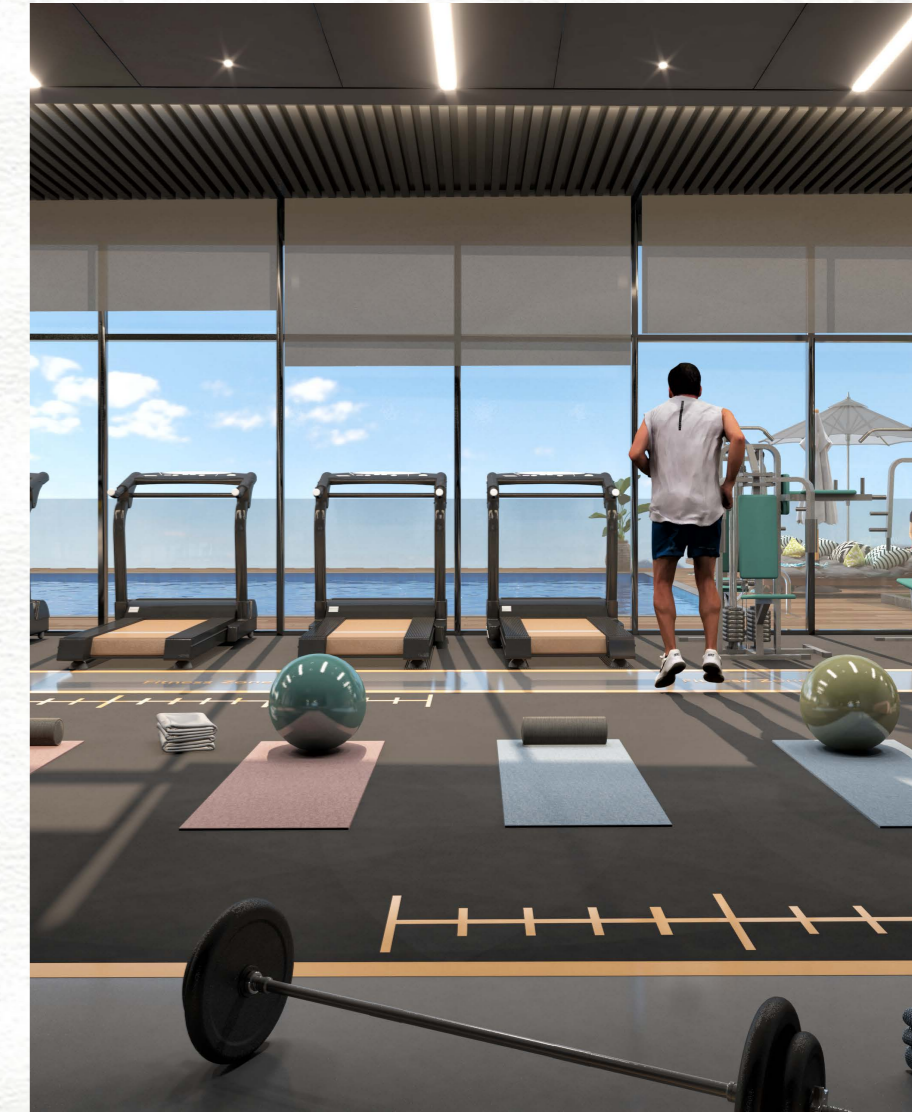
Discover a home that is as beautiful on the inside as it is on
the outside, and experience comfort at its finest



وسائل راحة بمستوى عالمي WORLD-CLASS AMENITIES



Large Swimming Pool	حمام سباحة كبير
Kids' Swimming Pools	حمامات سباحة للأطفال
Gymnasium	صالة ألعاب الرياضية
Kids' Play Area	منطقة لعب للأطفال
Shaded Seating Areas	مناطق جلوس مظلمة
2 Large Elevators	2 مصاعد كبيرة
BBQ Areas	مناطق للشواء
Landscaped Areas	مساحات خضراء
Private Parking Areas	مواقف سيارات خاصة





مميزات الوحدة UNIT FEATURES

- شرفات / تراسات حسب مخطط الوحدة
- خزائن مطبخ وكونترتوب
- حمامات مكسوة بالكامل وأجنحة ومراديض للضيوف حيثما كان ذلك متاحا
- نوافذ زجاجية مزدوجة
- قمر صناعي رئيسي ووصلات ألياف ضوئية لإنترنت عالي السرعة
- تكييف هواء مركزي
- وحدات تخزين و مرايا
- خزانات ملابس في غرف النوم
- حمام خاص في بعض غرف النوم
- Private Balconies / Terraces as per unit plan
- Kitchen cabinets and countertops
- Fully tiled bathrooms, in-suites and guest toilets wherever applicable
- Double glazed windows
- Satellite master antenna and fibre optic connection for high-speed internet access.
- Central air conditioning
- Vanity units & Mirrors
- Built-in wardrobes in bedrooms
- Some bedrooms with private bathroom

مزيج الوحدات UNIT MIX



109 شقة استوديو
Studio Apartments

130 شقة غرفة نوم واحدة
One Bedroom Apartments

TOTAL UNITS 239

إجمالي عدد الوحدات: 239

تفاصيل المشروع PROJECT DETAILS

Type: Residential
Plot Area: 2,930.05 sq. m.
Total height: 55.10 m
Levels: Ground + 3 Podiums + 10 Floors

النوع: سكني
مساحة الأرض: 2,930.05 متر مربع
إجمالي الارتفاع: 55.10 متر
عدد الطوابق: أرضي + 3 بوديوم + 10 طوابق سكنية

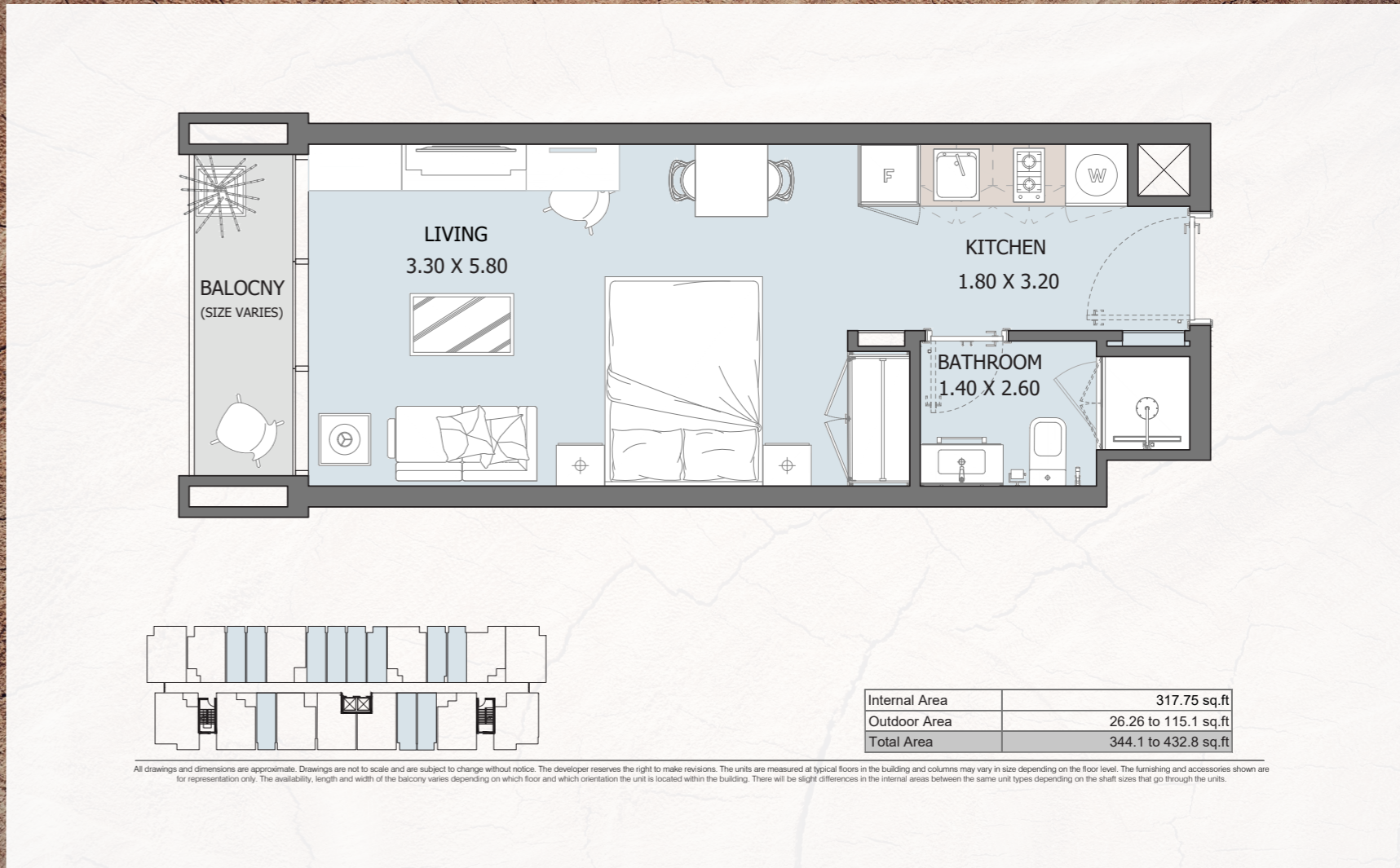


UNIT TYPES & FLOOR PLANS



STD TYPE - A

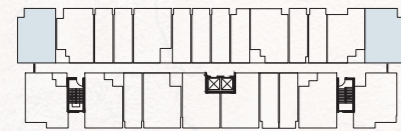
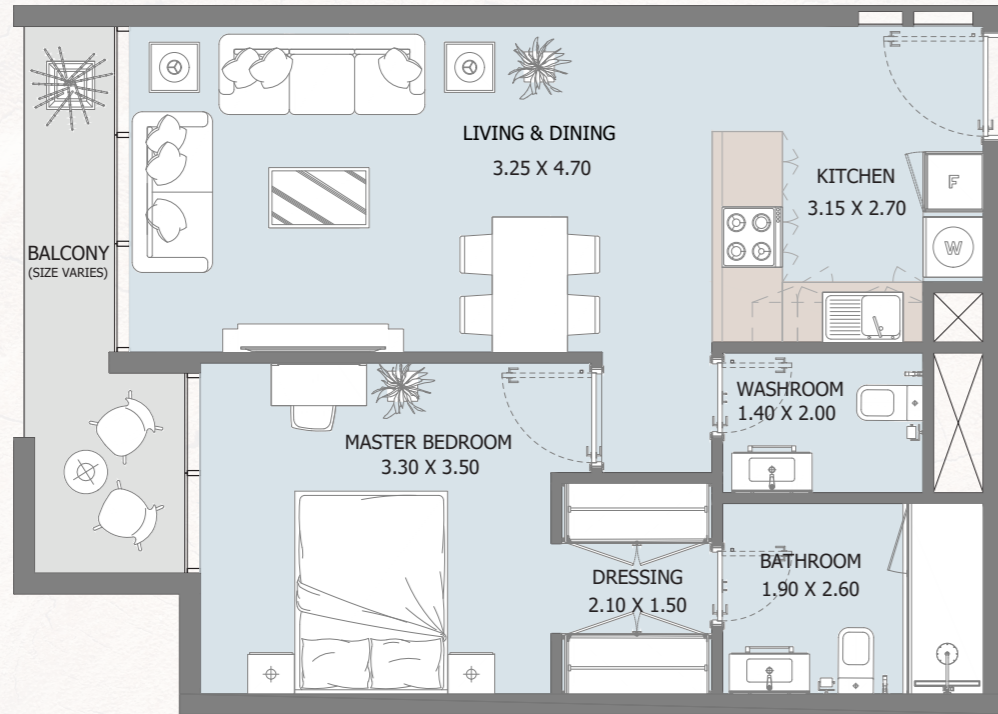
FROM GROUND FLOOR TO 10TH FLOOR



All drawings and dimensions are approximate. Drawings are not to scale and are subject to change without notice. The developer reserves the right to make revisions. The units are measured at typical floors in the building and columns may vary in size depending on the floor level. The furnishing and accessories shown are for representation only. The availability, length and width of the balcony varies depending on which floor and which orientation the unit is located within the building. There will be slight differences in the internal areas between the same unit types depending on the shaft sizes that go through the units.

1B TYPE - A

FROM 1ST FLOOR TO 9TH FLOOR

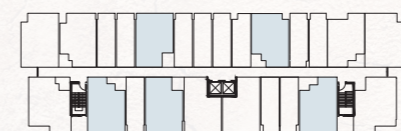
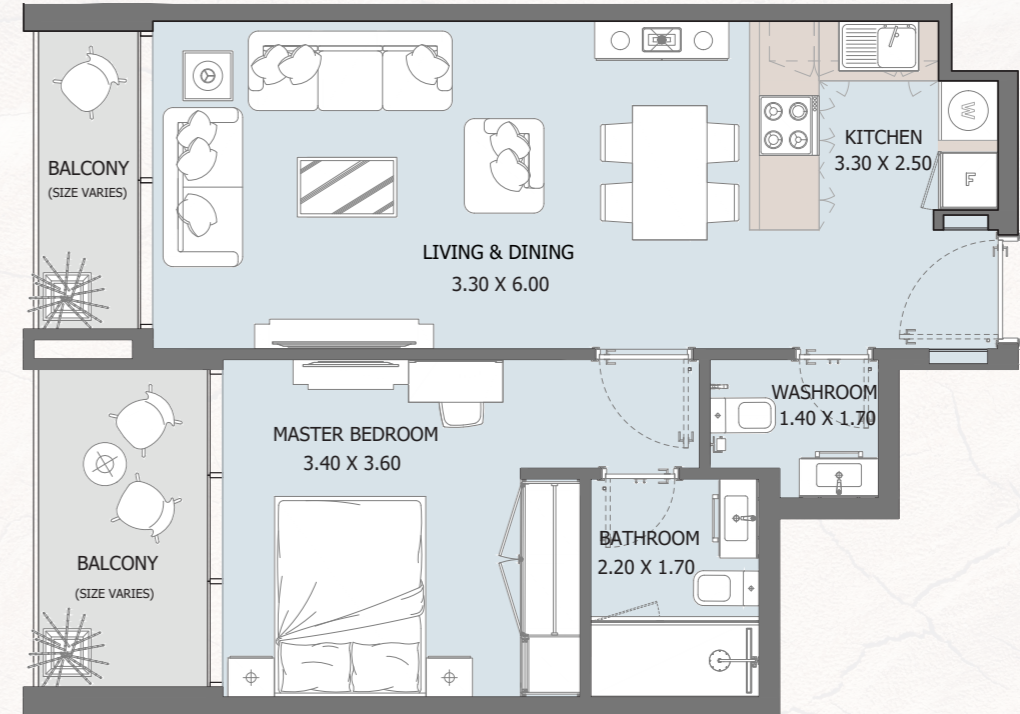


Internal Area	600 sq.ft
Outdoor Area	75.24 to 252.3 sq.ft
Total Area	675 to 852.1 sq.ft

All drawings and dimensions are approximate. Drawings are not to scale and are subject to change without notice. The developer reserves the right to make revisions. The units are measured at typical floors in the building and columns may vary in size depending on the floor level. The furnishing and accessories shown are for representation only. The availability, length and width of the balcony varies depending on which floor and which orientation the unit is located within the building. There will be slight differences in the internal areas between the same unit types depending on the shaft sizes that go through the units.

1B TYPE - B

FROM 1ST FLOOR TO 10TH FLOOR

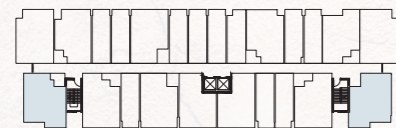
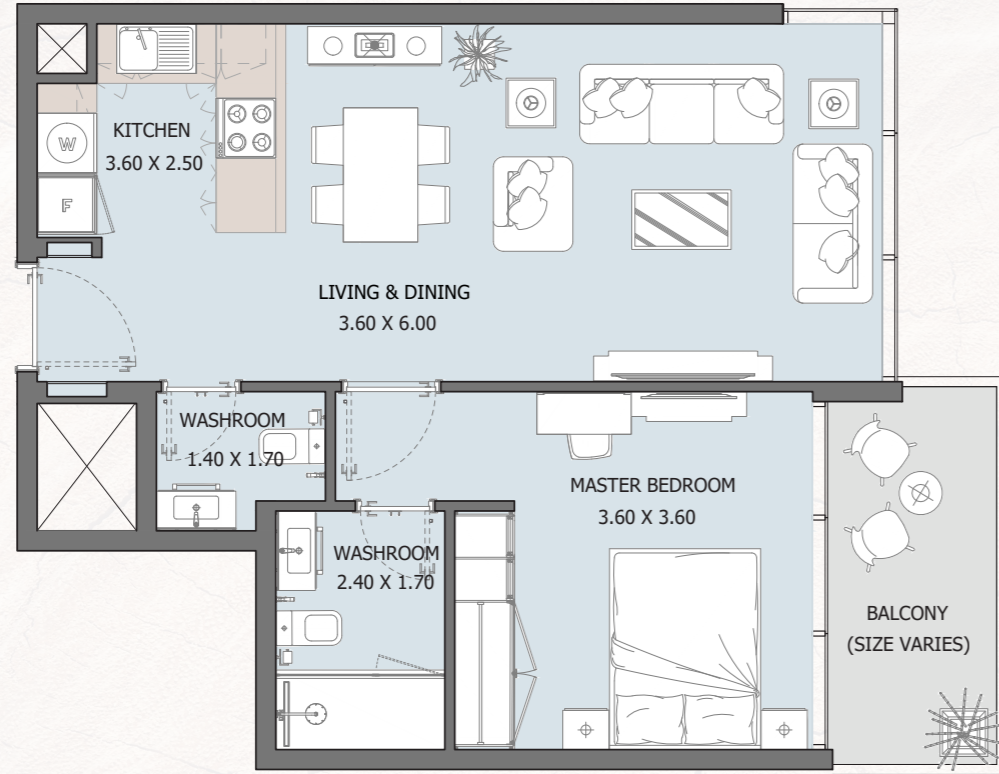


Internal Area	550.68 sq.ft
Outdoor Area	90.63 to 342.72 sq.ft
Total Area	641.31 to 893.40 sq.ft

All drawings and dimensions are approximate. Drawings are not to scale and are subject to change without notice. The developer reserves the right to make revisions. The units are measured at typical floors in the building and columns may vary in size depending on the floor level. The furnishing and accessories shown are for representation only. The availability, length and width of the balcony varies depending on which floor and which orientation the unit is located within the building. There will be slight differences in the internal areas between the same unit types depending on the shaft sizes that go through the units.

1B TYPE - C

FROM 1ST FLOOR TO 9TH FLOOR

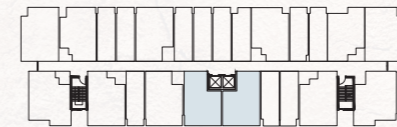
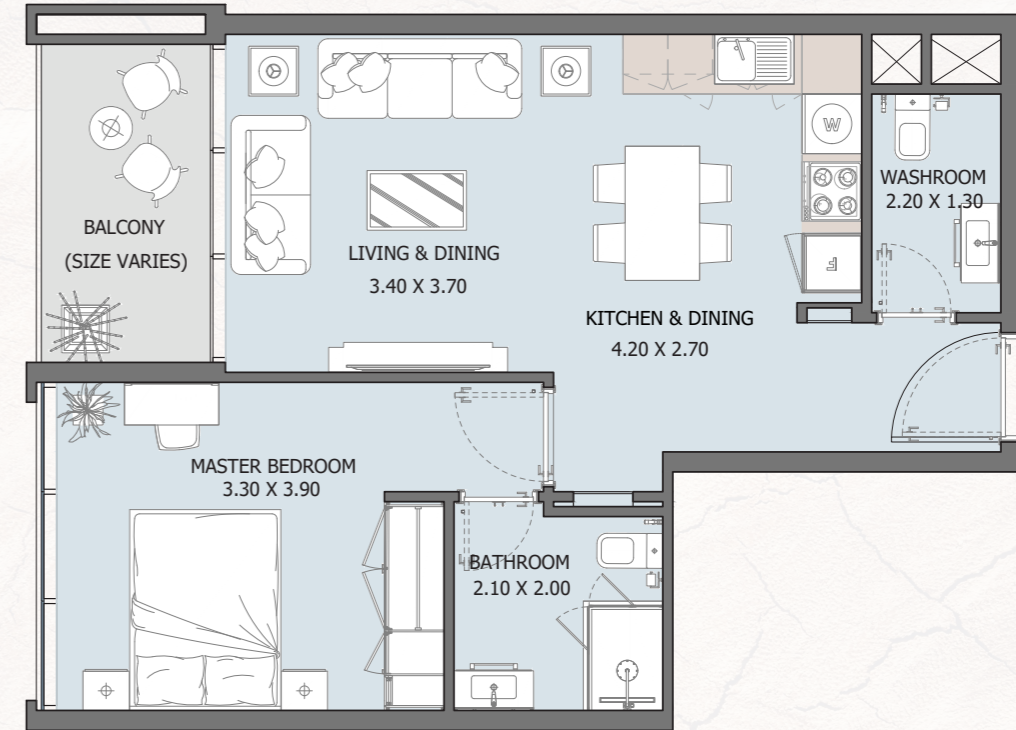


Internal Area	590.72 sq.ft
Outdoor Area	75.46 to 362.74 sq.ft
Total Area	666.17 to 953.47 sq.ft

All drawings and dimensions are approximate. Drawings are not to scale and are subject to change without notice. The developer reserves the right to make revisions. The units are measured at typical floors in the building and columns may vary in size depending on the floor level. The furnishing and accessories shown are for representation only. The availability, length and width of the balcony varies depending on which floor and which orientation the unit is located within the building. There will be slight differences in the internal areas between the same unit types depending on the shaft sizes that go through the units.

1B TYPE - D

FROM 2ND FLOOR TO 10TH FLOOR

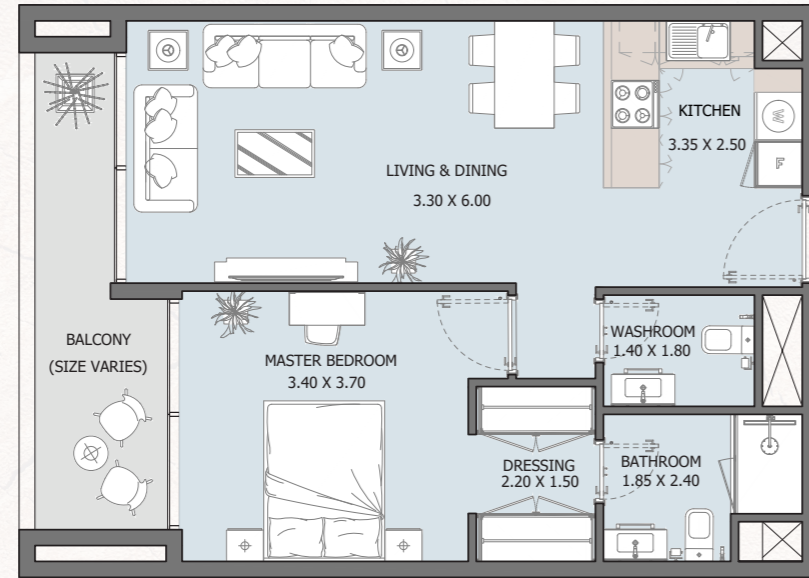


Internal Area	559.18 sq.ft
Outdoor Area	68.02 to 71.14 sq.ft
Total Area	626.78 to 630.33 sq.ft

All drawings and dimensions are approximate. Drawings are not to scale and are subject to change without notice. The developer reserves the right to make revisions. The units are measured at typical floors in the building and columns may vary in size depending on the floor level. The furnishing and accessories shown are for representation only. The availability, length and width of the balcony varies depending on which floor and which orientation the unit is located within the building. There will be slight differences in the internal areas between the same unit types depending on the shaft sizes that go through the units.

1B TYPE - E

FROM GROUND FLOOR TO 2ND FLOOR

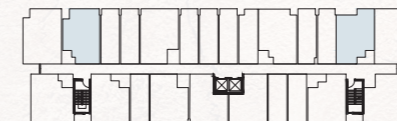
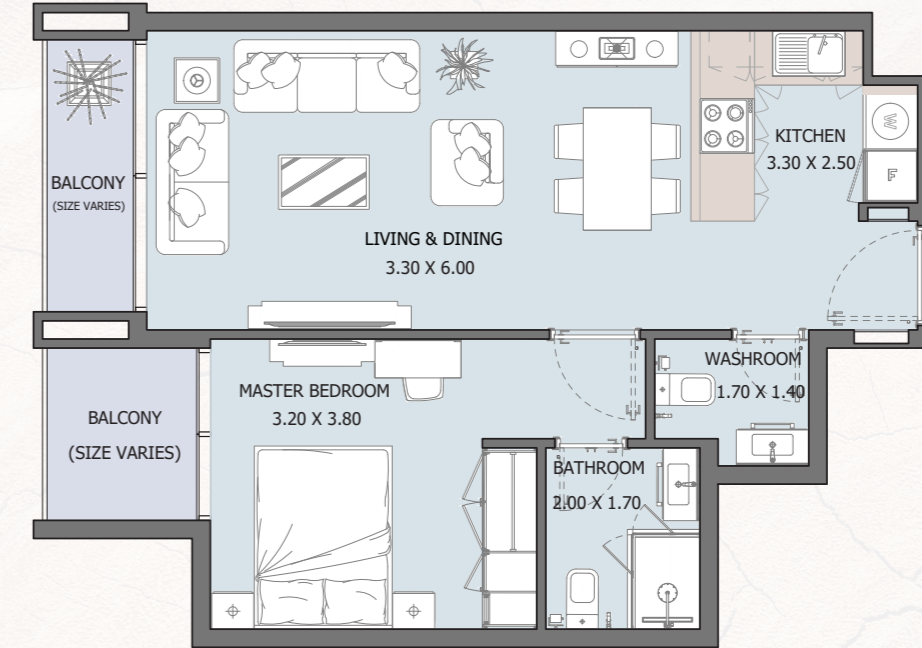


Internal Area	605.47 sq.ft
Outdoor Area	102.58 to 286 sq.ft
Total Area	709.34 to 892.65 sq.ft

All drawings and dimensions are approximate. Drawings are not to scale and are subject to change without notice. The developer reserves the right to make revisions. The units are measured at typical floors in the building and columns may vary in size depending on the floor level. The furnishing and accessories shown are for representation only. The availability, length and width of the balcony varies depending on which floor and which orientation the unit is located within the building. There will be slight differences in the internal areas between the same unit types depending on the shaft sizes that go through the units.

1B TYPE - F

FROM 1ST FLOOR TO 10TH FLOOR

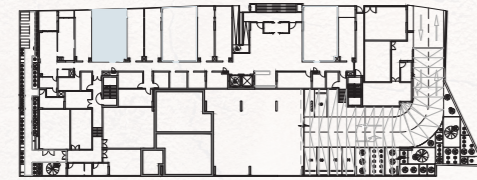
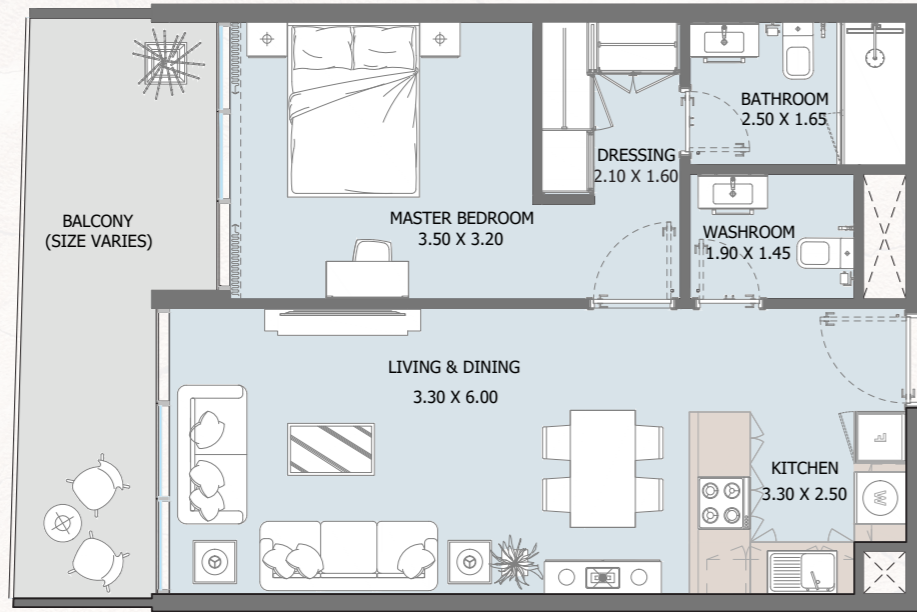


Internal Area	538.73 sq.ft
Outdoor Area	61.68 to 243.70 sq.ft
Total Area	600.41 to 782.43 sq.ft

All drawings and dimensions are approximate. Drawings are not to scale and are subject to change without notice. The developer reserves the right to make revisions. The units are measured at typical floors in the building and columns may vary in size depending on the floor level. The furnishing and accessories shown are for representation only. The availability, length and width of the balcony varies depending on which floor and which orientation the unit is located within the building. There will be slight differences in the internal areas between the same unit types depending on the shaft sizes that go through the units.

1B TYPE - G

GROUND FLOOR

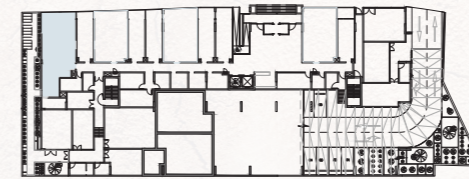
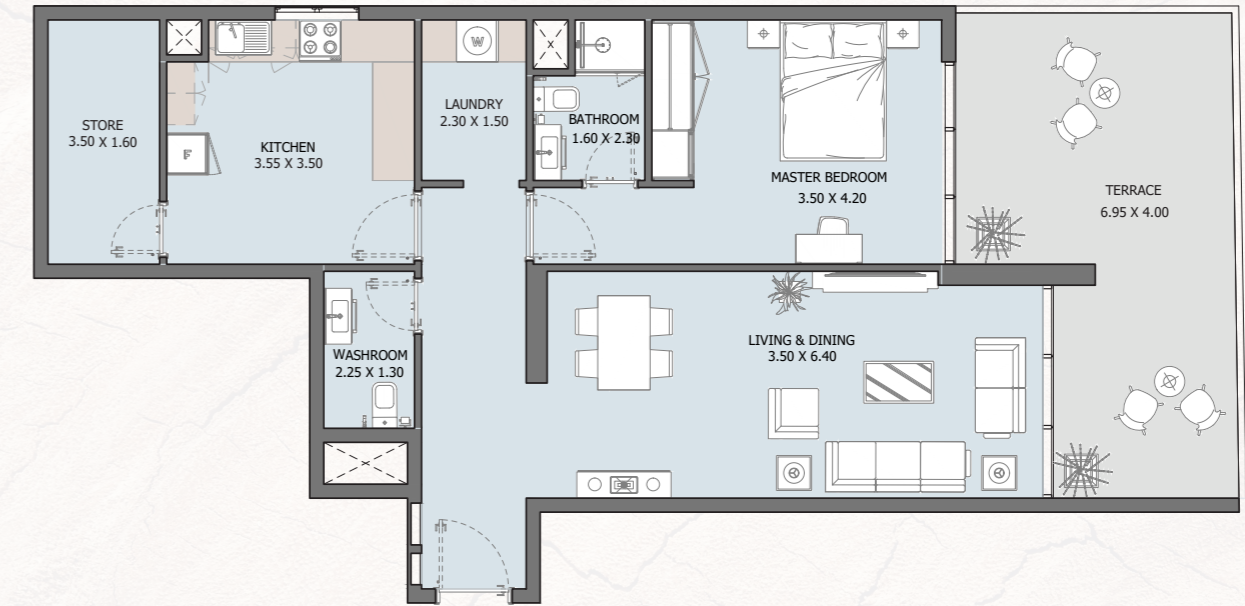


Internal Area	593.95 sq.ft
Outdoor Area	148.43 sq.ft
Total Area	742.38 sq.ft

All drawings and dimensions are approximate. Drawings are not to scale and are subject to change without notice. The developer reserves the right to make revisions. The units are measured at typical floors in the building and columns may vary in size depending on the floor level. The furnishing and accessories shown are for representation only. The availability, length and width of the balcony varies depending on which floor and which orientation the unit is located within the building. There will be slight differences in the internal areas between the same unit types depending on the shaft sizes that go through the units.

1B TYPE - H

GROUND FLOOR



Internal Area	900.40 sq.ft
Outdoor Area	265.49 sq.ft
Total Area	1165.84 sq.ft

All drawings and dimensions are approximate. Drawings are not to scale and are subject to change without notice. The developer reserves the right to make revisions. The units are measured at typical floors in the building and columns may vary in size depending on the floor level. The furnishing and accessories shown are for representation only. The availability, length and width of the balcony varies depending on which floor and which orientation the unit is located within the building. There will be slight differences in the internal areas between the same unit types depending on the shaft sizes that go through the units.

ريپورتاج العقارية
Reportage.
Properties

Abu Dhabi, UAE | Head Office
Tamouh Tower
28th Floor, Al Reem Island
P.O. Box: 111949
Tollfree: +971 800 77 55 2
info@reportageuae.com

Dubai, UAE
Anantara Business Tower
3rd Floor, Business Bay
P.O. Box: 27446
Tollfree: +971 800 77 55 2
info@reportageuae.com

Cairo, EGYPT
Building 217, North Teseen St.,
New Cairo, Egypto
T: +20 17023
info@reportageeg.com

Istanbul. TÜRKİYE
Levent, Tekfen Tower
8th Floor, Office 31, Büyükdere St.
P.O. Box 34394, Şişli
T: +90 530 774 9595
info@reportage.com.tr

Riyadh, KSA
Building No. 3230
Al Aflaj St., Al Suwaidi
P.O. Box 12791
T: +966 11 215 1110
info@reportageuae.com

For more information, visit reportageuae.com
or call 800 77 55 2 | +971 50 244 1078



Legal Disclaimer:

The information contained in this brochure is confidential and is for the exclusive use of the recipient. This brochure may not be reproduced, distributed, delivered, or furnished to any person without the prior written approval of Reportage Properties. No representation or warranty (expressed or implied) is made or can be given with respect to the accuracy or completeness of the information herein, or that any future offer of units or apartments in the project will conform to the terms described herein. Nothing in this leaflet should be constructed as financial, legal, tax or regulatory advice. All accessories such as electronics, furniture, white goods, decorative elements and so forth included in this brochure are not part of the standard unit and used for illustration purposes only. All plans, layouts, pictures, renderings, information and details included in this brochure are indicative only and may change at any time up to the final 'as built' status in accordance with final designs of the project and regulatory approvals and planning permissions.



Reportage.
Properties