

# EXOTICA

*By Al Marina*

WHERE ELEGANCE  
MEETS SERENITY

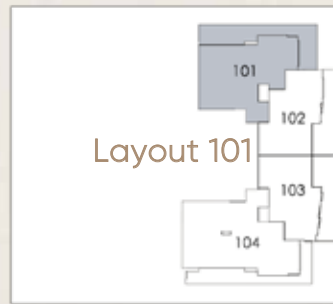
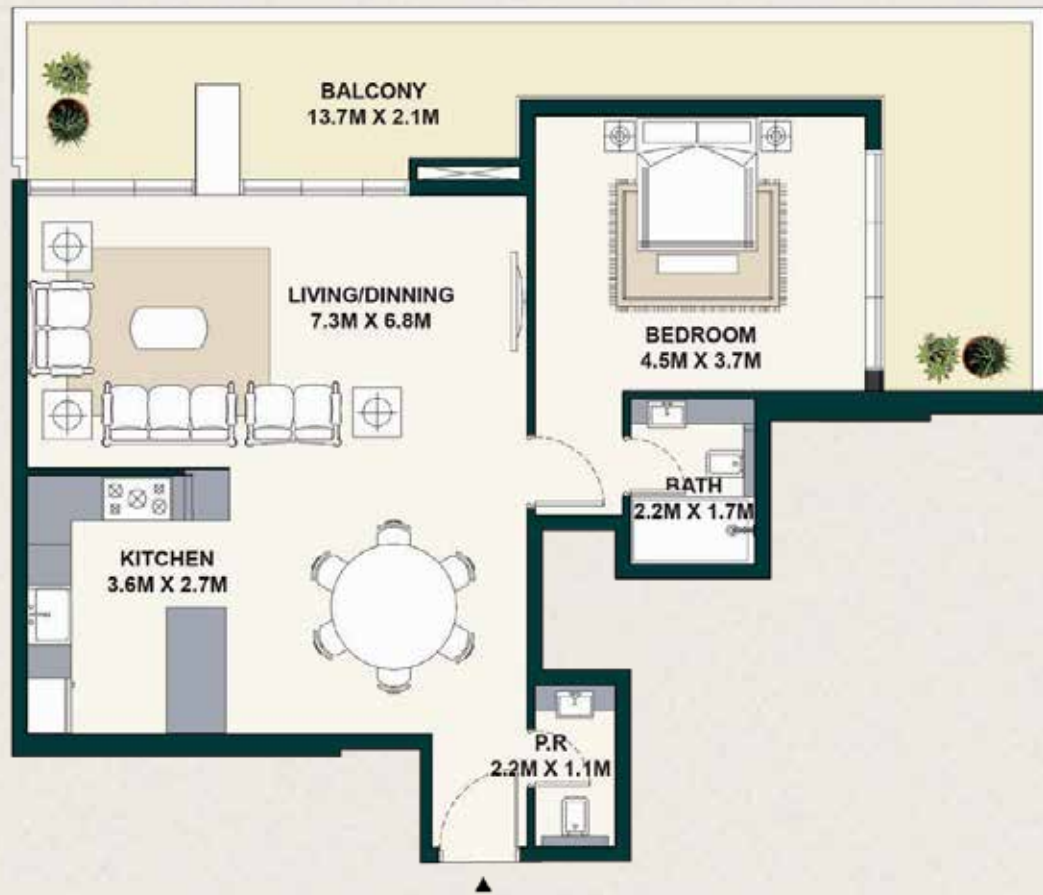


# UNIT TYPES & FLOOR PLANS



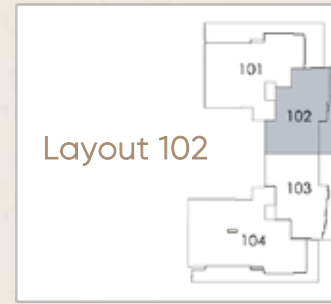
# 1 BEDROOM APARTMENTS

**Type 1:** 1252.60 sq.ft



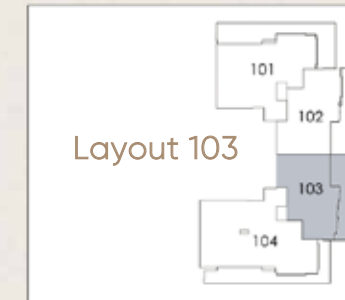
Suite Area	82.83 sqm	891.57 sq.ft
Balcony Area	33.54 sqm	361.02 sq.ft
<b>Total Area</b>	<b>116.37 sqm</b>	<b>1252.60 sq.ft</b>

**Type 2:** 835.82 sq.ft



Suite Area	58.31 sqm	627.64 sq.ft
Balcony Area	19.34 sqm	208.17 sq.ft
<b>Total Area</b>	<b>77.65 sqm</b>	<b>835.82 sq.ft</b>

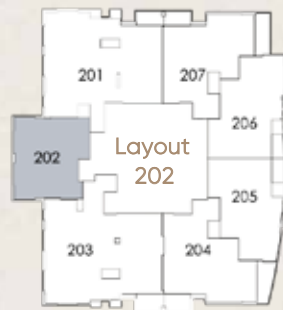
**Type 3:** 840.88 sq.ft



Suite Area	56.59 sqm	609.13 sq.ft
Balcony Area	21.53 sqm	231.75 sq.ft
<b>Total Area</b>	<b>78.12 sqm</b>	<b>840.88 sq.ft</b>

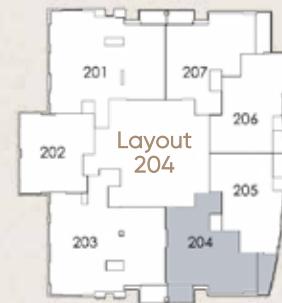
# 1 BEDROOM APARTMENTS

**Type 4:** 590.19 sq.ft



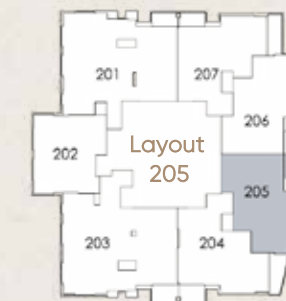
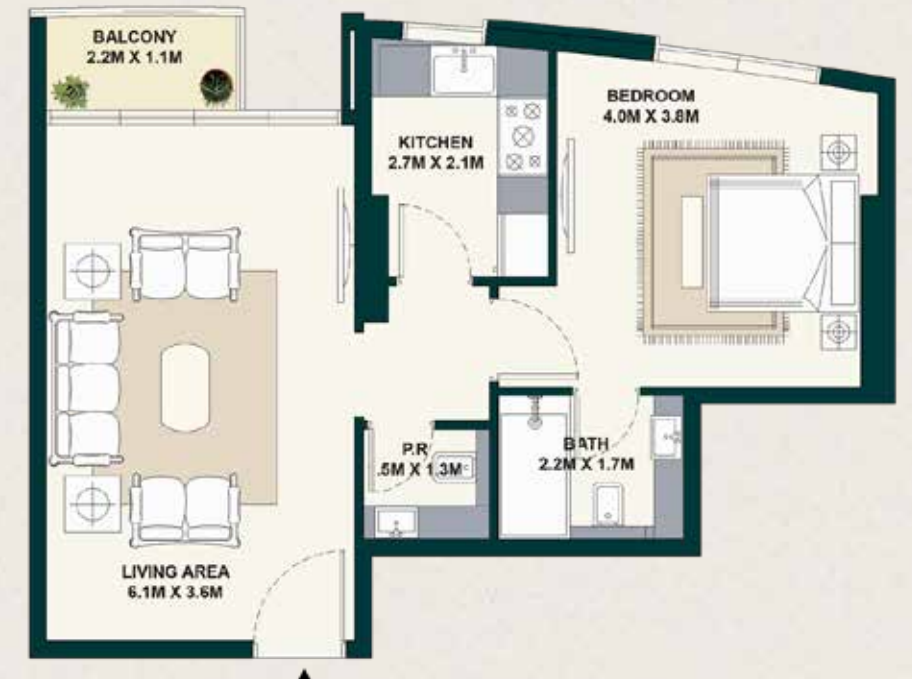
Suite Area	54.83 sqm	590.19 sq.ft
Balcony Area	-	-
Total Area	54.83 sqm	590.19 sq.ft

**Type 5:** 818.06 sq.ft



Suite Area	64.94sqm	699.01 sq.ft
Balcony Area	11.06 sqm	119.05 sq.ft
Total Area	76.00 sqm	818.06 sq.ft

**Type 6:** 639.38 sq.ft

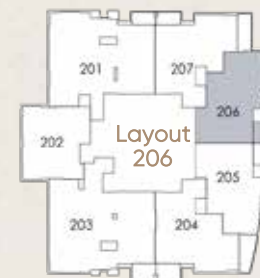


Suite Area	56.45 sqm	607.62 sq.ft
Balcony Area	2.95 sqm	31.75 sq.ft
Total Area	59.40 sqm	639.38 sq.ft



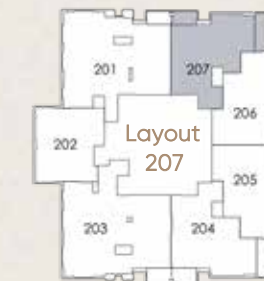
# 1 BEDROOM APARTMENTS

**Type 7:** 657.35 sq.ft



Suite Area	58.38 sqm	628.40 sq.ft
Balcony Area	2.69 sqm	28.95 sq.ft
Total Area	61.07 sqm	657.35 sq.ft

**Type 8:** 784.58 sq.ft



Suite Area	63.04 sqm	678.56 sq.ft
Balcony Area	9.85 sqm	106.02 sq.ft
Total Area	72.89 sqm	784.58 sq.ft

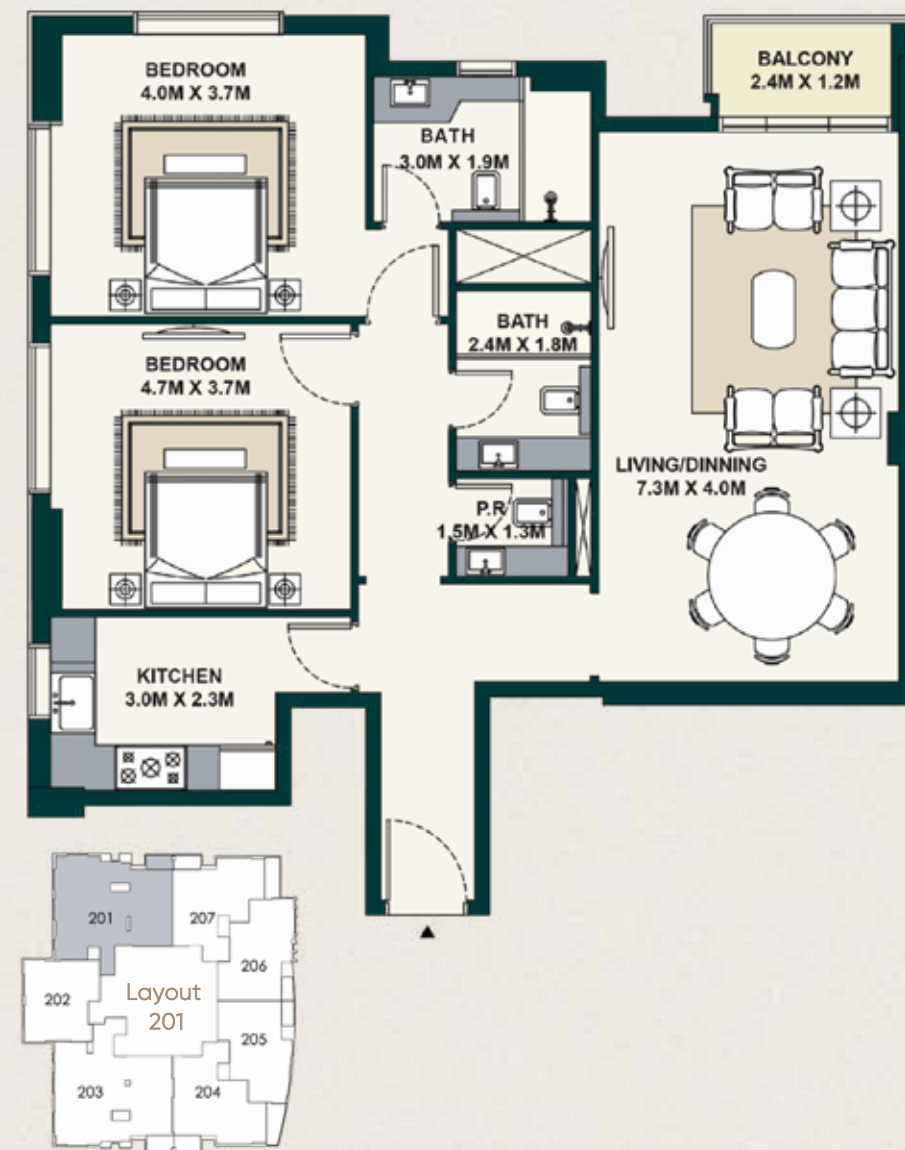
# 2 BEDROOM APARTMENTS

**Type 1:** 1363.03 sq.ft



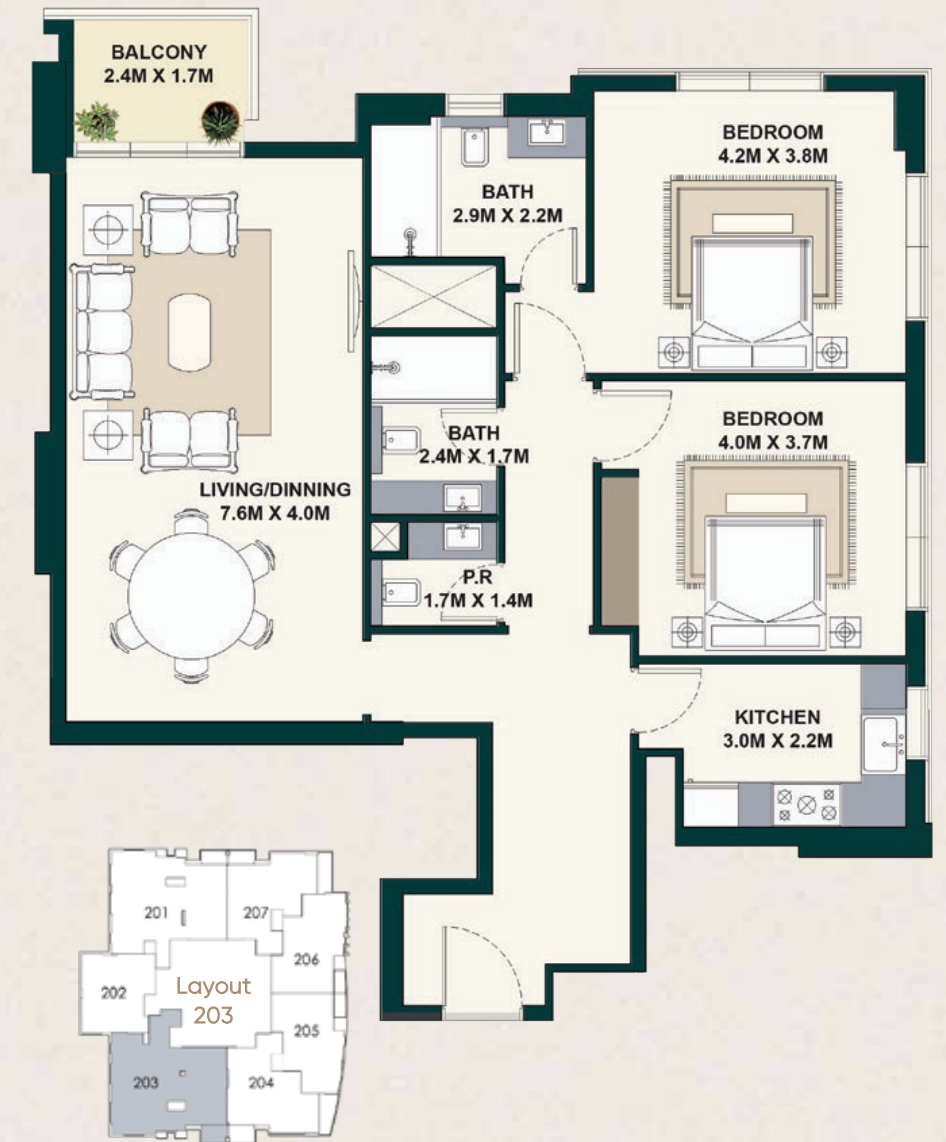
Suite Area	100.48 sqm	1081.56 sq.ft
Balcony Area	26.15 sqm	281.48 sq.ft
Total Area	126.63 sqm	1363.03 sq.ft

**Type 2:** 1141.19 sq.ft



Suite Area	102.30 sqm	1101.15 sq.ft
Balcony Area	3.72 sqm	40.04 sq.ft
Total Area	106.02 sqm	1141.19 sq.ft

**Type 3:** 1220.84 sq.ft

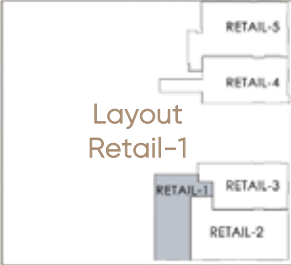


Suite Area	108.66 sqm	1169.61 sq.ft
Balcony Area	4.76 sqm	51.24 sq.ft
Total Area	113.42 sqm	1220.84 sq.ft



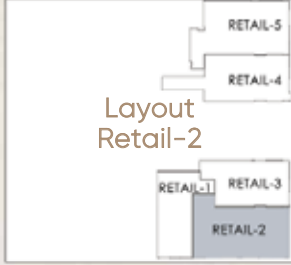
# RETAIL UNITS

**Type 1:** 638.08 sq.ft



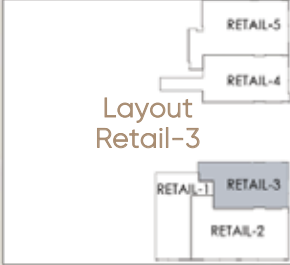
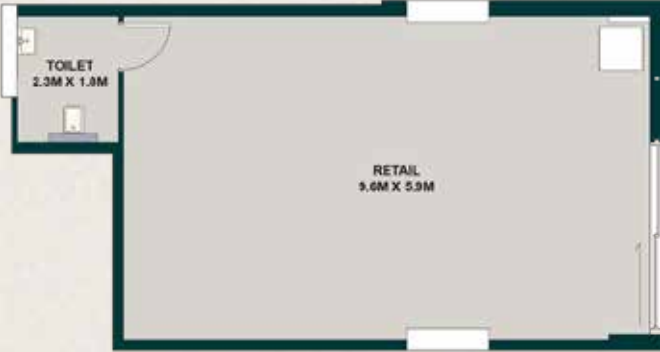
Total Area 59.28 sqm 638.08 sq.ft

**Type 2:** 972.41 sq.ft



Total Area 90.34 sqm 972.41 sq.ft

**Type 3:** 679.07 sq.ft

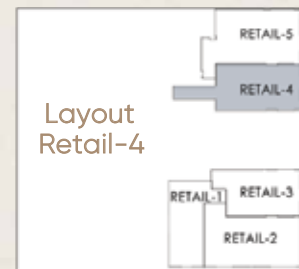
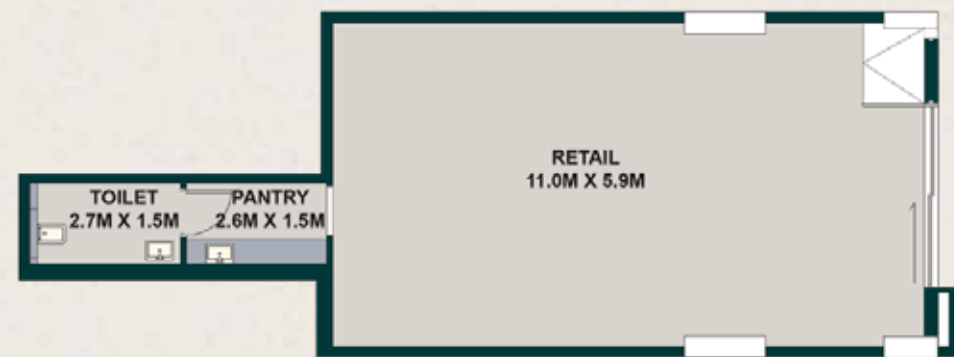


Total Area 64.76 sqm 697.07 sq.ft

الصورة والرسومات التوضيحية ومخططات الطوابق والأوصاف الواردة في هذا الكتيب هي انطباعات فنية وقابلة للتغيير دون إشعار. قد يختلف التصميم الفعلي والميزات والمواصفات الخاصة بالعمارة. الصور والرسومات التوضيحية ومخططات الطوابق والأوصاف الواردة في هذا الكتيب هي انطباعات فنية وقابلة للتغيير دون إشعار. قد يختلف التصميم الفعلي والميزات والمواصفات الخاصة بالعمارة. The images, illustrations, floor plans, and descriptions included in this brochure are artistic impressions and are subject to change without notice. The actual design, features, and specifications of the property may vary.

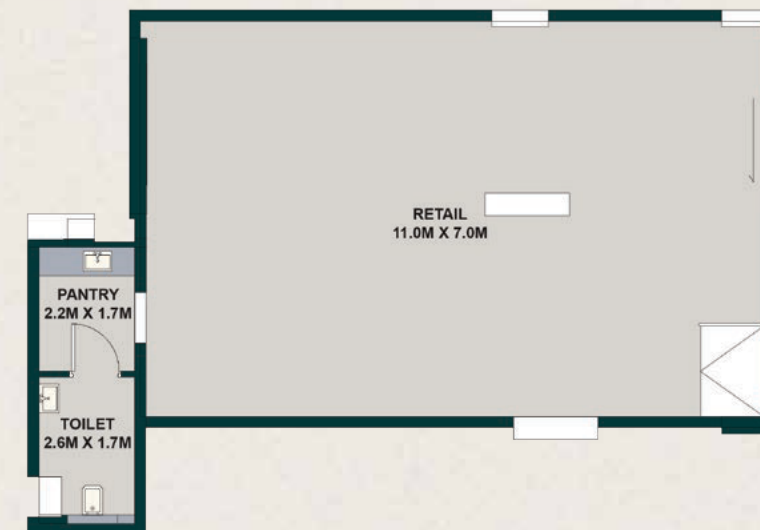
# RETAIL UNITS

**Type 4:** 848.19 sq.ft



Total Area 78.80 sqm 848.19 sq.ft

**Type 5:** 976.17 sq.ft



Total Area 90.69 sqm 976.17 sq.ft