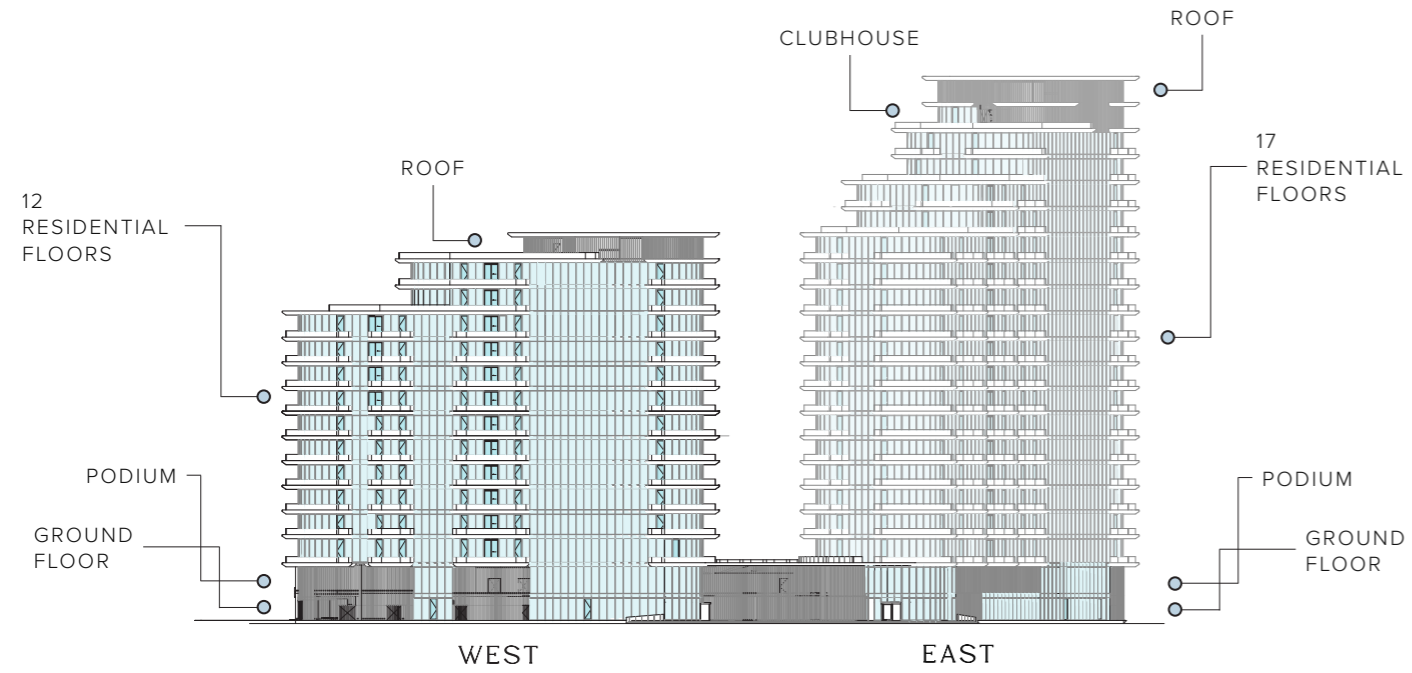


ELLINGTON  
VIEWS I

INVESTOR GUIDE

# BUILDING CONFIGURATION



# AMENITIES WITHIN THE PROJECT

- Hotel-style drop-off area
- 2 Double-height lobby for lounging and reading
- Rooftop clubhouse with kitchenette, lounge, dining, and library
- Outdoor rooftop deck with lounge area
- Fitness studio
- Kids' club with karaoke, ball pit and pretend play counter, gaming corner, and reading nooks
- Outdoor yoga
- Changing room with steam shower and locker storage
- Kids' splash pad
- Beach club swimming pool
- Beach pavilion for golf course and beach access
- Beach club deck with loungers, cabanas, and swing
- Indoor golf simulator
- Mini golf
- Barbeque deck with social gathering spaces
- Indoor cinema
- Outdoor fire pit with lounge area
- Beach pavilion refreshment bar
- Bicycle parking
- EV charging station

## ELEVATORS

4 passenger elevators  
2 service elevators

## ANTICIPATED SERVICE CHARGE

AED 14 per sq.ft

## ANTICIPATED COMPLETION DATE

Q1 2027

## PARKING

Studio, 1 and 2-bedroom: 1 car parking space  
3-bedroom: 2 car parking spaces

## OWNERSHIP

Freehold



# DRIVING DISTANCES



**1 MINUTE**

*Al Hamra Golf Club*

**22 MINUTES**

*RAK Mall*

**3 MINUTES**

*Al Hamra Mall*

**24 MINUTES**

*Al Qawasim Corniche & RAK Eye*

**5 MINUTES**

*Al Hamra Marina & Yacht*

**28 MINUTES**

*RAK International Airport*

**9 MINUTES**

*RAK Track*

**41 MINUTES**

*Dhayah Fort*

**9 MINUTES**

*Al Jazeera Al Hamra*

**43 MINUTES**

*Jebel Jais Entrance*

**14 MINUTES**

*Wynn Resort*

**47 MINUTES**

*Sharjah International Airport*

**20 MINUTES**

*Flamingo Beach*

**60 MINUTES**

*Dubai International Airport*

ELLINGTON  
VIEWS I

RAS  
AL KHAIMAH

UMM  
AL-QUWAIN

FUJAIRAH

SHARJAH

DUBAI

RAK Int'l Airport

Sharjah Int'l Airport

Dubai Int'l Airport

COASTAL LIVING IN A  
FLOURISHING COMMUNITY



ELLINGTON  
VIEWS I

AL HAMRA  
WATERFRONT

CLUBHOUSE AND  
SAILING ACADEMY

THE RITZ CARLTON,  
AL HAMRA BEACH

AL HAMRA GOLF CLUB

SOFITEL AL HAMRA  
BEACH RESORT

AL HAMRA  
GOLF COURSE

AL HAMRA  
RESIDENCE HOTEL

THE WALDORF  
ASTORIA

AL HAMRA MALL

## UNITS & SIZES



### EAST TOWER

### NUMBER OF UNITS

### SIZE RANGE

Studio	43 units	From 464 sq. ft to 532 sq. ft
1-bedroom	74 units	From 926 sq. ft to 2,323 sq. ft
2-bedroom	31 units	From 1,407 sq. ft to 4,559 sq. ft
3-bedroom	17 units	From 2,274 sq. ft

### WEST TOWER

### NUMBER OF UNITS

### SIZE RANGE

Studio	12 units	From 449 sq. ft to 473 sq. ft
1-bedroom	47 units	From 934 sq. ft to 1,106 sq. ft
2-bedroom	43 units	From 1,382 sq. ft to 3,060 sq. ft
2-bedroom duplex	1 unit	From 3,764 sq. ft

For booking or any further enquiries contact us on [info@ellingtongroup.com](mailto:info@ellingtongroup.com)  
or contact your Property Consultant directly.

## DOCUMENT NEEDED TO BOOK A UNIT

- 01 Buyer's Passport Copy
- 02 Home address, email address, including the contact number (should be the same as the home address)
- 03 AED 50,000 booking token to be paid in the form of UAE cheque or using our payment portal to pay by credit card or cryptocurrency on <https://pay.ellingtonproperties.ae>



## BOOKING STEPS

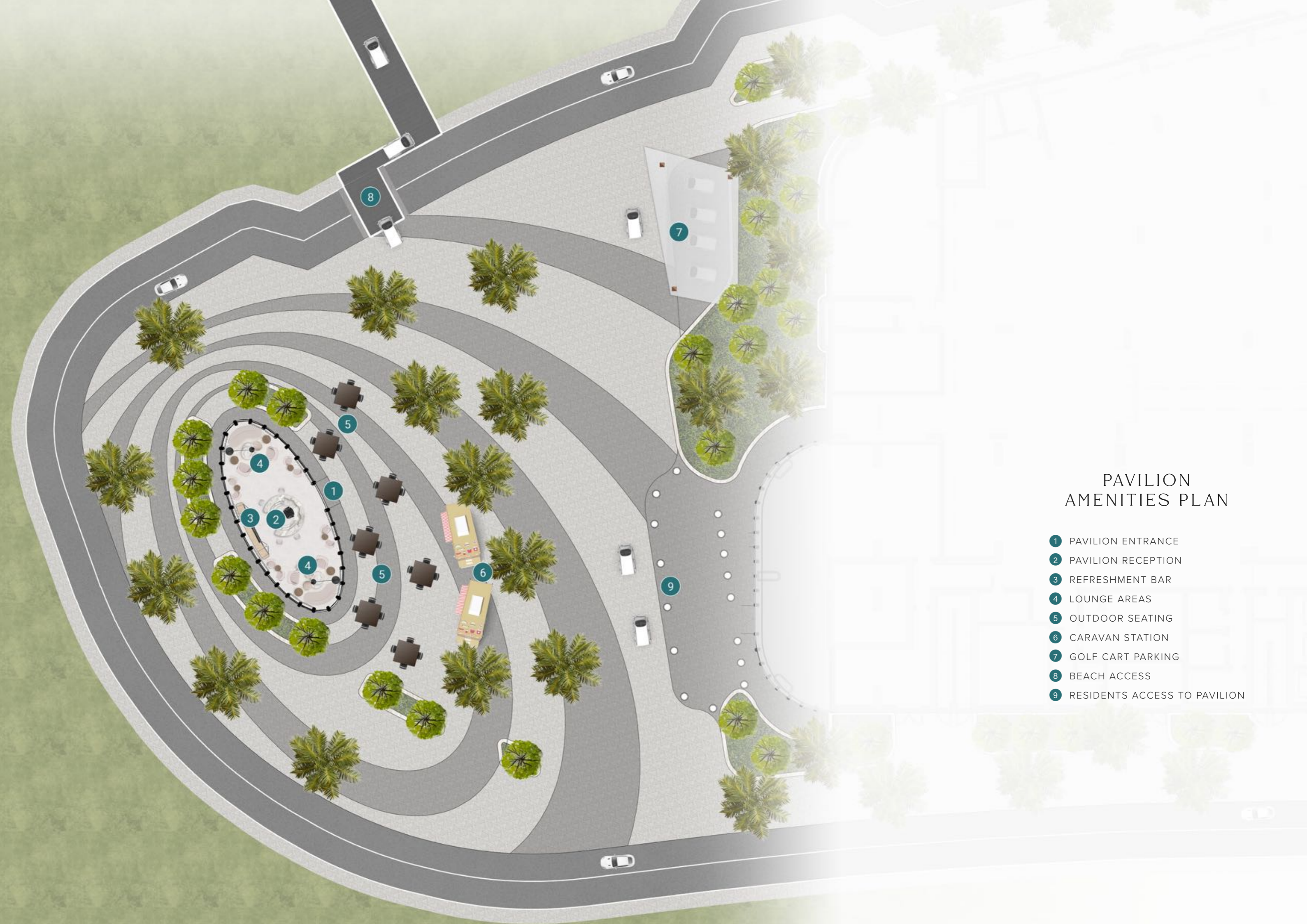
01. Customer will pay the booking amount and submit the required documents to initiate the unit reservation
02. Customer will receive a receipt from [customercare@ellingtongroup.com](mailto:customercare@ellingtongroup.com) along with the booking form
03. Customer to complete the down-payment and the registration fees in order to receive two copies of the Sales and Purchase Agreement (SPA) to sign
04. Customer will send back the signed SPAs for execution to Ellington Properties
05. Upon execution, Ellington Properties will register the unit with DLD and send a copy to the customer





### GROUND FLOOR AMENITIES PLAN

- 1 MAIN ENTRANCE
- 2 DROP-OFF AREA
- 3 EAST TOWER LOBBY ENTRANCE
- 4 WEST TOWER LOBBY ENTRANCE
- 5 LOBBY RECEPTION
- 6 LOBBY LOUNGE
- 7 HALLWAY SEATING
- 8 LIFT LOBBY
- 9 SERVICE ROAD ENTRANCE
- 10 PEDESTRIAN WALKWAY
- 11 RESIDENTS PARKING
- 12 BICYCLE PARKING
- 13 VISITORS PARKING



# PAVILION AMENITIES PLAN

- 1 PAVILION ENTRANCE
- 2 PAVILION RECEPTION
- 3 REFRESHMENT BAR
- 4 LOUNGE AREAS
- 5 OUTDOOR SEATING
- 6 CARAVAN STATION
- 7 GOLF CART PARKING
- 8 BEACH ACCESS
- 9 RESIDENTS ACCESS TO PAVILION





### 1<sup>ST</sup> FLOOR AMENITIES PLAN

- 1 INFINITY BEACH POOL
- 2 SAND BEACH
- 3 POOL SUN LOUNGERS
- 4 CABANAS
- 5 KIDS SPLASH PAD
- 6 SHADED KIDS PLAY
- 7 MULTIPURPOSE SPACE
- 8 MINI-GOLF
- 9 OUTDOOR FIRE PIT
- 10 OUTDOOR SEATING
- 11 BARBEQUE AREA
- 12 KIDS CLUB
- 13 FITNESS STUDIO
- 14 MALE CHANGE ROOM
- 15 FEMALE CHANGE ROOM
- 16 CHANGING ROOM FOR PEOPLE OF DETERMINATION
- 17 LIFT LOBBY



### 18<sup>TH</sup> FLOOR AMENITIES PLAN

- 1 CLUBHOUSE ENTRANCE
- 2 CLUB LOUNGE
- 3 PRIVATE DINING
- 4 ROOFTOP BAR
- 5 ANALOGUE LIBRARY & DIGITAL PLAY
- 6 WASHROOM
- 7 VIEWING LOUNGE
- 8 STARGAZING AREA
- 9 OUTDOOR DINING
- 10 OUTDOOR TERRACE
- 11 LIFT LOBBY

## A beach and golf course serenity in Ras Al Khaimah

One of the standout features of Ellington Views is its spectacular vantage point, providing residents with sweeping views of the lush green fairways of the adjacent Al Hamra golf course on one side and Al Hamra Marina & Yacht Club, Marjan Island on the other. It also extends its charm to the azure waters of the beach. With its proximity to the coastline, residents can relish the sight of the sparkling sea, bask in the gentle sea breeze, and take leisurely strolls along the sandy shores at their own pace. The strategic location ensures that every day is a visual feast, an opportunity to reconnect with nature, and a chance to relish the beauty of the world around you.



## ENTRANCE & DROP-OFF



From the moment you arrive, you'll be greeted by a lush, verdant landscape that features an array of meticulously maintained greenery and gracefully swaying palm trees. The natural beauty surrounding the drop-off area is not only aesthetically pleasing but also calming and rejuvenating. It creates a serene oasis right at the entrance, setting the tone for the premium lifestyle experience that awaits you within. Whether you're arriving home or welcoming guests, this space exudes a sense of grand arrival reminiscent of a high-end hotel.

## LOBBY



The lobby is a captivating blend of modern elegance and nature-inspired design with expansive windows that not only flood the area with sunlight but also offer breathtaking views of the lush surroundings, allowing you to feel connected to the natural world outside. The earthy tones are reminiscent of the coastal landscape and evoke a feeling of serenity. The reception area, adorned in pristine marble, serves as a focal point, exuding a sense of timeless elegance and sophistication. Throughout the area, you'll also find an abundance of greenery and plants, adding a touch of life and freshness to the ambiance.

## BEACH PAVILION



Nestled amidst the lush beauty of our community, the Beach Pavilion provides a serene and comfortable lounge where residents can relax and soak in the tranquil atmosphere. Whether you're heading to the pristine golf courses or the sun-kissed beach, this pavilion offers the perfect setting to unwind. For residents' convenience, there's a refreshment bar thoughtfully stocked with an array of beverages. The Beach Pavilion is more than just a waiting area – it's a communal space where residents can sip a cool beverage, socialize, or simply enjoy a moment of tranquility.

## BEACH CLUB POOL



The Beach Club Pool at Ellington Views is more than just a pool; it's a vibrant oasis that transports you to the beachside without leaving your home. Inspired by the serene beauty of coastal living, this pool is surrounded by pristine sand, creating an authentic beach atmosphere right at your doorstep. It's a place where you can dip your toes in the sand and soak up the sun's warmth as you lounge on comfortable sunbeds. What makes this pool truly unique is its proximity to nature. The pool deck offers unobstructed views of the surrounding natural beauty, with lush greenery and, just beyond, the pristine beach.

## FITNESS STUDIO



The fitness studio is designed to create an atmosphere of wellness and vitality, the contemporary design, premium finishes, and modern decor exude a truly exceptional fitness experience. Step into a fitness haven bathed in natural light, thanks to its expansive floor-to-ceiling windows offering panoramic views of the lush outdoor surroundings. Where residents can experience a lifestyle that values their well-being and elevates their every day with state-of-the-art exercise equipment, carefully selected to cater to all their fitness desires.

## KIDS CLUB



The Kids Club is a vibrant and imaginative space that's been designed to spark creativity, entertain, and nurture young minds. It is a delightful haven inspired by the boundless beauty of the sea, where the ocean's wonders come to life. With a color palette of serene blues and lush greens, this space exudes the tranquil charm of oceanic adventures. The space features a karaoke, a ball pit, a pretend play counter, a gaming corner, and cozy reading nooks. It's a space that encourages social interaction, cognitive development, and, most importantly, a lot of fun!

Discover the epicenter of  
entertainment, comfort, and elegance



CLUBHOUSE



LIVING AREA



KITCHEN

The Ellington Views apartments redefine modern living, offering a harmonious blend of sophistication, comfort, and functionality. With heightened ceilings, the spaces exude spaciousness, complemented by expansive windows inspired by the coastal geometries, providing panoramic vistas of the outdoor surroundings. The custom-designed contemporary kitchen cabinetry, premium sintered stone countertops, and high-standard European brand appliances ensure both style and practicality, making the kitchen the heart of every home.



BATHROOM



BEDROOM

Bedrooms, with their own generous outside living balcony areas, offer private retreats bathed in natural light. While the modern bathrooms feature impeccable design and premium fixtures, creating spa-like sanctuaries for your daily rituals. At Ellington Views, we have crafted a world where design-led living and convenience come together seamlessly to elevate your lifestyle.

# PAYMENT PLAN

20%

At the time of booking  
+AED 3,000 RERA registration fee

5%

60 days after the reservation date

5%

120 days after the reservation date

5%

On completion of 20% construction of the project

5%

On completion of 30% construction of the project

5%

On completion of 40% construction of the project

5%

On completion of 50% construction of the project

50%

On completion\*

\*plus 4% upon completion and this amount is earmarked specifically to cover expenses related to the title deed registration process.



## WHY INVEST WITH ELLINGTON PROPERTIES



Award-winning  
boutique developer

**ROI**

High return on investment  
of up to 9%\*

**96%**

Occupancy rate\*



Multiple payment options  
available including  
cryptocurrency



Hotel-inspired amenities

**30%**

Premium on average  
rental returns\*\*



High capital appreciation  
upon handover



Transparent and reliable  
customer care



Prime locations



High tenant retention



Quicker return of capital  
compared to market average\*



Sustainability compliance  
with Dubai Green Building  
Regulations

\*ReidIn Market Data  
\*\*JVC projects as per ReidIn report







**ELLINGTON**  
PROPERTIES

LIVE IN DESIGN

800 8288  
info@ellingtongroup.com

ELLINGTONPROPERTIES.AE

The renderings and visualizations contained in this brochure are provided for illustrative and marketing purposes. While the information provided is believed to be accurate and reliable at the time of printing, only the information contained in the final Sales and Purchase Agreement will have any legal effect.