



CUBIX RESIDENCES

CUBIX RESIDENCES BUILDING CONFIGURATION

Cubix Residences is an L shaped, modern and high tech residential building



G + P + 5 Floors

64
units

15
STUDIOS

32
1 BEDROOM

7
2 BEDROOM

4
2 BEDROOM
DUPLEX

6
3 BEDROOM
DUPLEX

CUBIX RESIDENCES



LOCATED AT JUMEIRAH VILLAGE CIRCLE



10 Minutes
Dubai Autodrome



15 Minutes
Mall of the Emirates



18 Minutes
Palm Jumeirah



20 Minutes
Jumeirah Beach



20 Minutes
Dubai Marina



20 Minutes
Downtown Dubai & Burj Khalifa

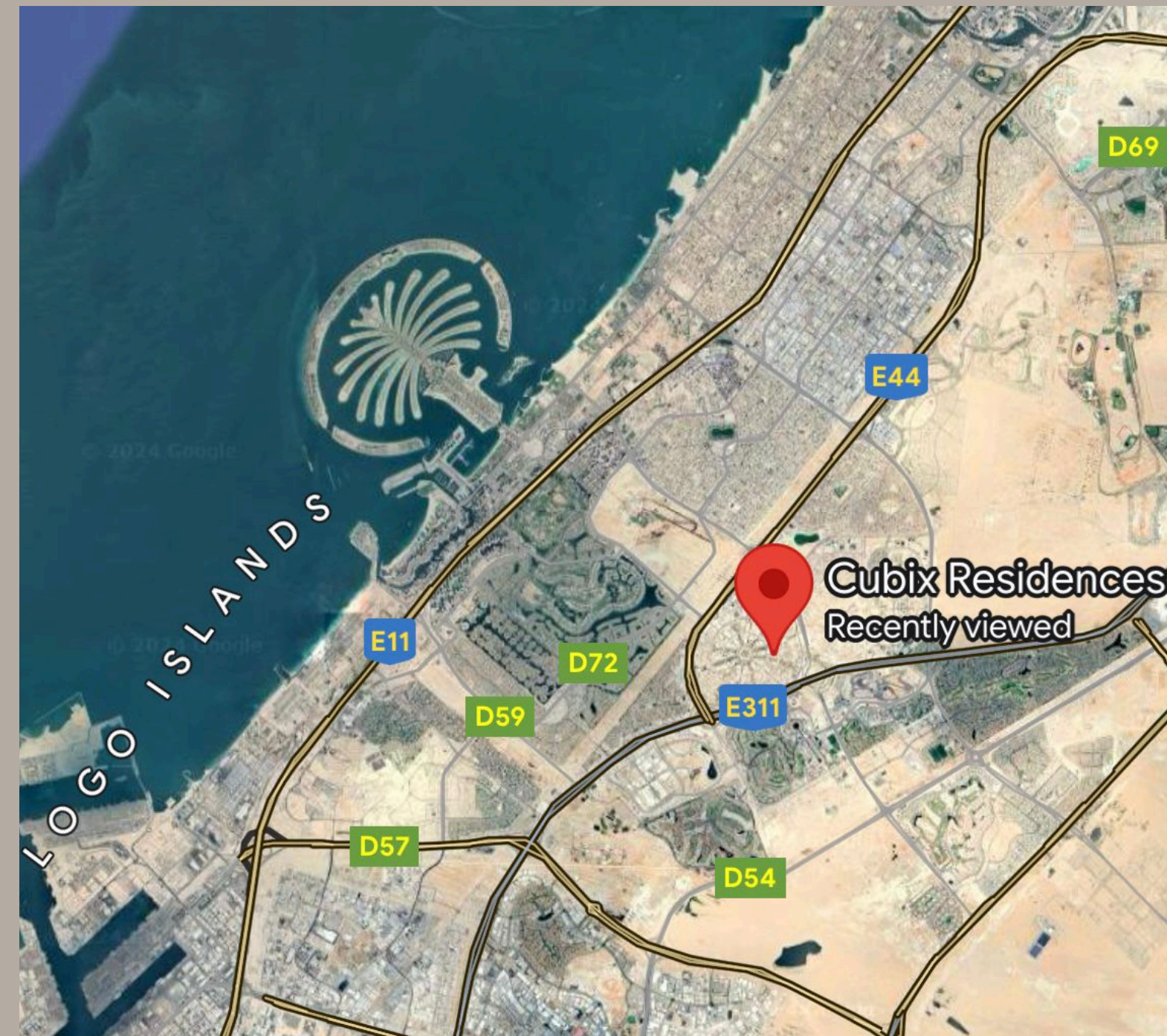


28 Minutes
Dubai World Central



30 Minutes
Dubai International Airport

<https://maps.app.goo.gl/kSRbDm42LDoHZ2Eh7>





MAIN LOBBY



INNOVATION HUB





AMENITIES



SWIMMING POOL

Start your day with a splash or unwind with a leisurely swim - with a beautiful community swimming pool at your doorstep, the choice is entirely yours.



SHOWER ROOMS

Whether you're heading home from a commute, hitting the gym or spending some time in your community pool, our shower rooms and lockers provide convenience, comfort and security combined.



INDOOR GYM

Designed with a health-conscious lifestyle in mind, our indoor gym ensures you're never far from a place in which to reach your potential. Discover everything you need to hit your stride.



JOGGING TRACK

Meandering through the stylish environs, our jogging track is a simple yet effective addition to promote healthy living, while maximising the benefits of an indoor-outdoor lifestyle.



24/7 SECURITY

Our security service ensure safe living and maintain the private atmosphere of the community

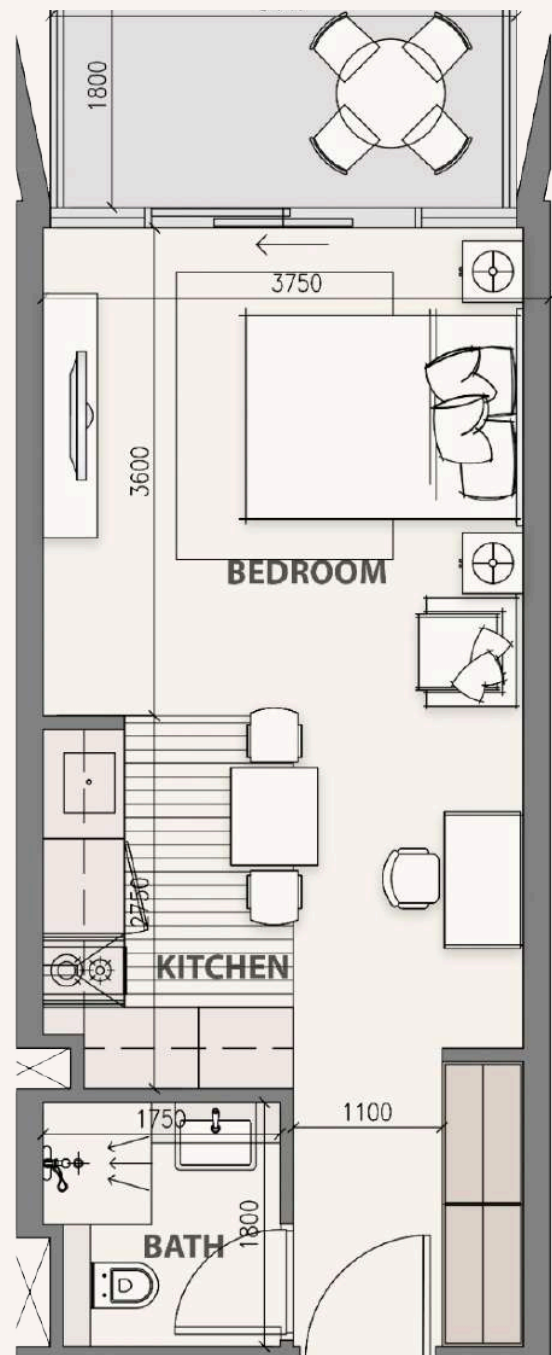


SAUNA & STEAM ROOM

Known as the heat therapy. The sauna and steam room provides a wide range of health benefits especially after exercising

You'll find everything you need for a lifestyle built around health and happiness.

STUDIO



- 1 BEDROOM
- KITCHEN
- 1 BATHROOM

Suite Area: 336.48 sq ft

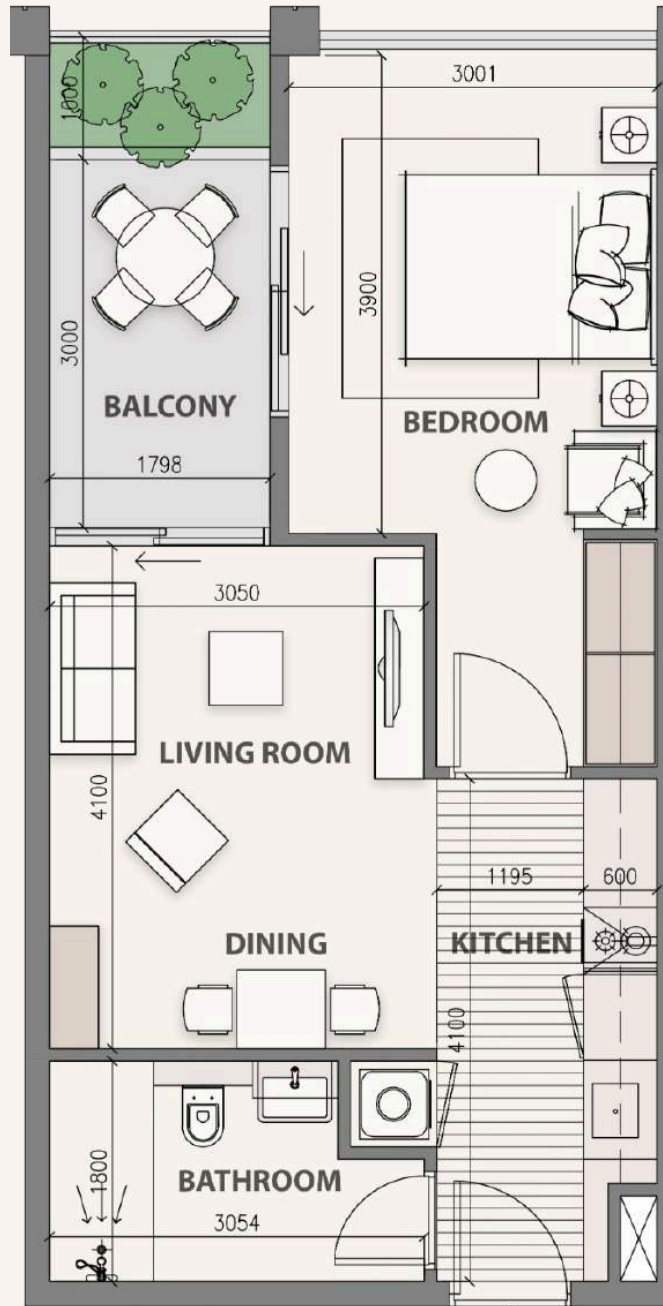
Balcony Area: 63.83 sq ft

Total Sellable Area: 400.31 sq ft

Starting Price
from 620,000 AED



1 BEDROOM ST1



LIVING ROOM



1 BEDROOM



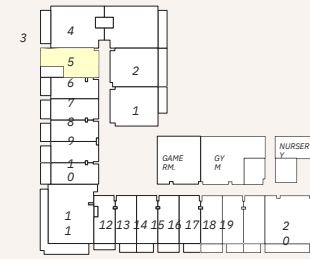
KITCHEN



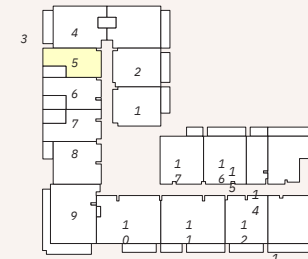
DINING ROOM



1 BATHROOM



1ST FLOOR LEVEL



2N TO 3RD TYP. FLOOR LEVEL
D

Suite Area: 476.63 sq ft

Balcony Area: 86 sq ft

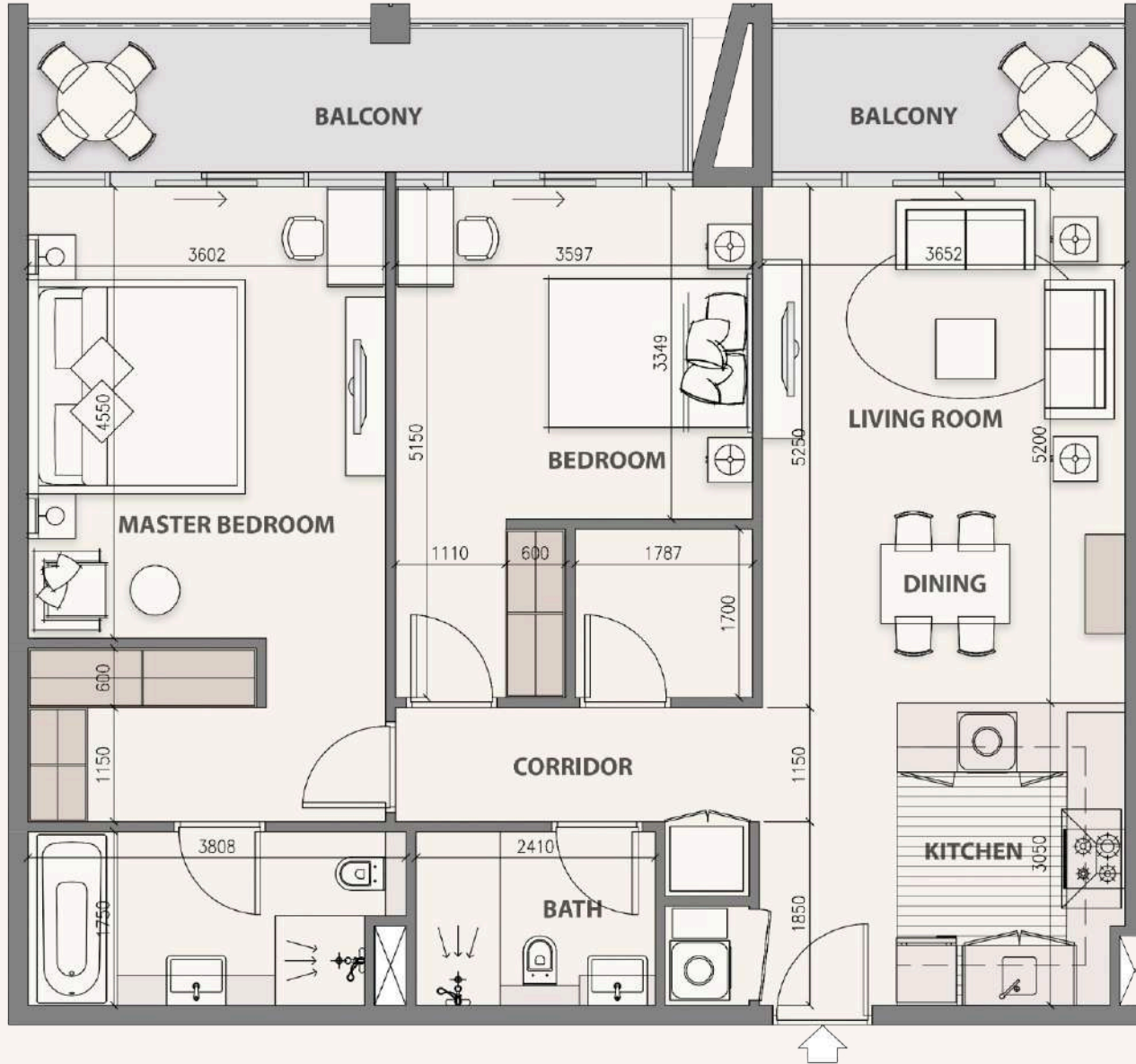
Total Sellable Area: 562.63 sq ft

Starting Price
from 820,000 AED



2 BEDROOM T2

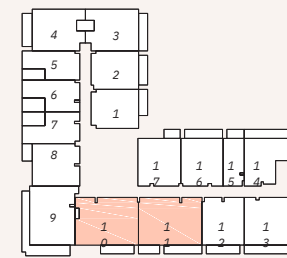
LIVING ROOM 2 BEDROOM KITCHEN DINING ROOM 2 BATHROOMS STORE ROOM



Suite Area: 1014.28 sq ft

Balcony Area: 174.81 sq ft

Total Sellable Area: 1189.09 sq ft



2ND TO 3 TYP. FLOOR LEVEL

Starting Price
from 3,000,000 AED



2 BEDROOM DUPLEX T1

- 
LIVING ROOM
- 
2 BEDROOMS
- 
KITCHEN
- 
DINING ROOM
- 
3 BATHROOMS
- 
STORE ROOM
- 
PRIVATE SWIMMING POOL
- 
TERRACE



FOURTH FLOOR

Suite Area: 711.82 sq ft

Balcony Area: 316.46 sq ft

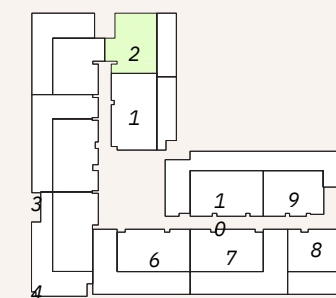
Total Sellable Area: 1028.28 sq ft

FIFTH FLOOR

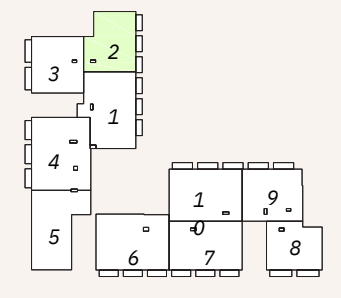
Suite Area: 733.67 sq ft

Balcony Area: 79.01 sq ft

Total Sellable Area: 812.68 sq ft



4TH FLOOR LEVEL



5TH FLOOR LEVEL

Starting Price **from 2,200,000 AED**

3 BEDROOM DUPLEX T1

 LIVING ROOM
  3 BEDROOMS
  KITCHEN
  DINING ROOM
  4 BATHROOMS
  3 STORE ROOM
  PRIVATE SWIMMING POOL
  TERRACE



FOURTH FLOOR

Suite Area: 885.55 sq ft

Balcony Area: 339.49 sq ft

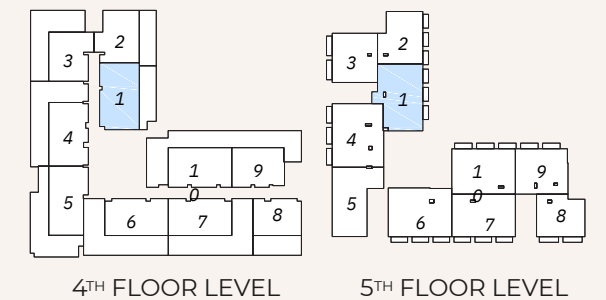
Total Sellable Area: 1225.04 sq ft

FIFTH FLOOR

Suite Area: 982.96 sq ft

Balcony Area: 79.01 sq ft

Total Sellable Area: 1061.97 sq ft



Starting Price **from 3,000,000 AED**



PRIVATE SWIMMING POOL

PAYMENT PLAN MILESTONE

10%

Down Payment

+4% DLD fee to be paid to the initial deposit

10%

2st installment

10%

3st installment

10%

4st installment

10%

5st installment

50%

Final installment

Upon Construction Completion