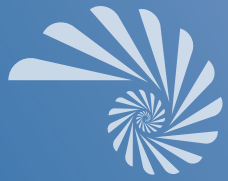




marlin

— AL REEM ISLAND —



FLOOR  
**PLANS**

# PROJECT DETAILS

Type: Residential

-Plot Area: 4,308 sq. m

-Total Height: 80 m

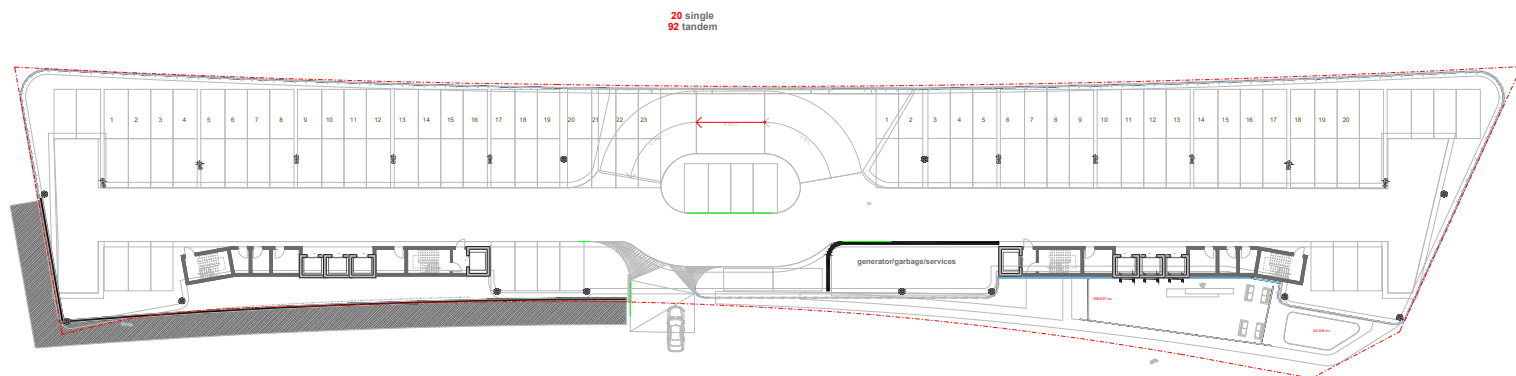
-Total Units: 246 (Tower A= 132, Tower B= 114)

-Levels: Lower Ground + Ground + 2 Podiums + Amenities Podium + 18 Floors + Penthouses

## MARLIN

### LOWER GROUND FLOOR

● J1B ● 1B ● 2B ● 3B ● 4B



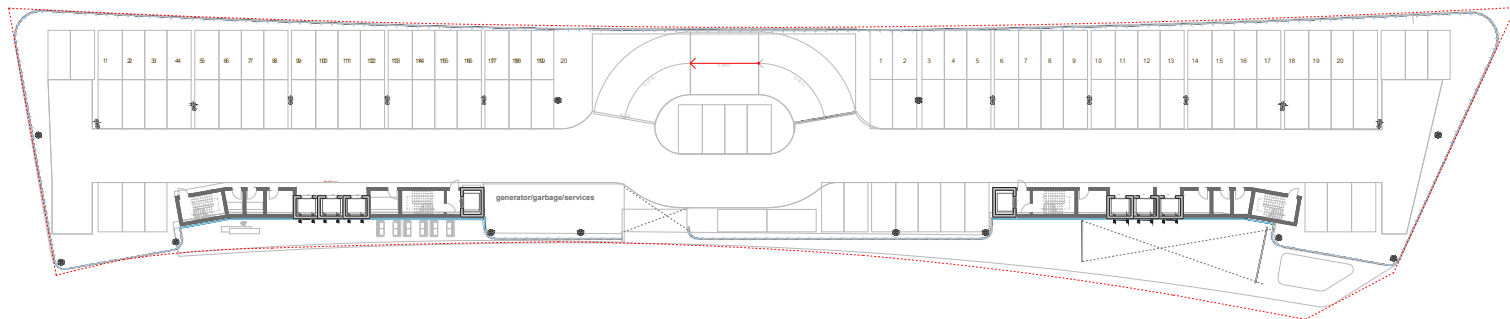


---

# MARLIN

## GROUND FLOOR

● 11B ● 1B ● 2B ● 3B ● 4B



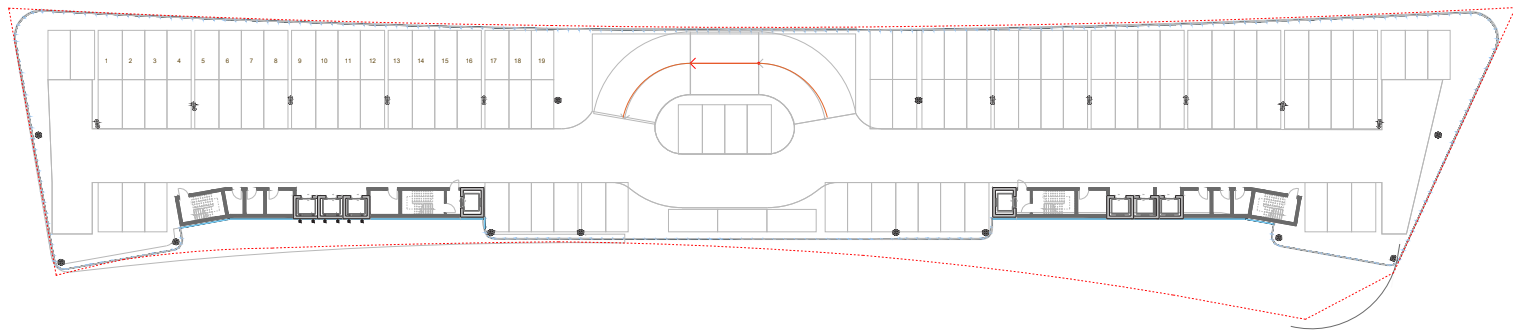


---

# MARLIN

## PODIUM 1

● 11B ● 1B ● 2B ● 3B ● 4B



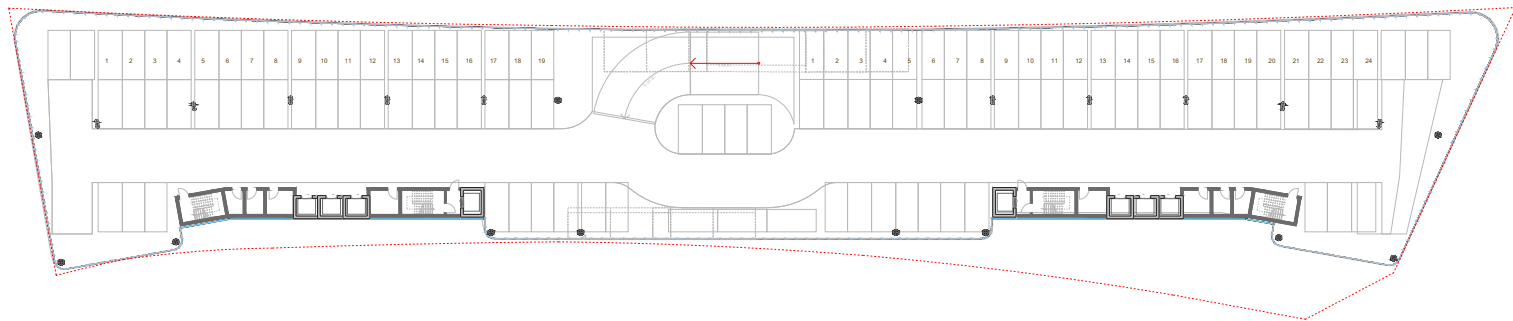


---

# MARLIN

## PODIUM 2

● 11B ● 1B ● 2B ● 3B ● 4B



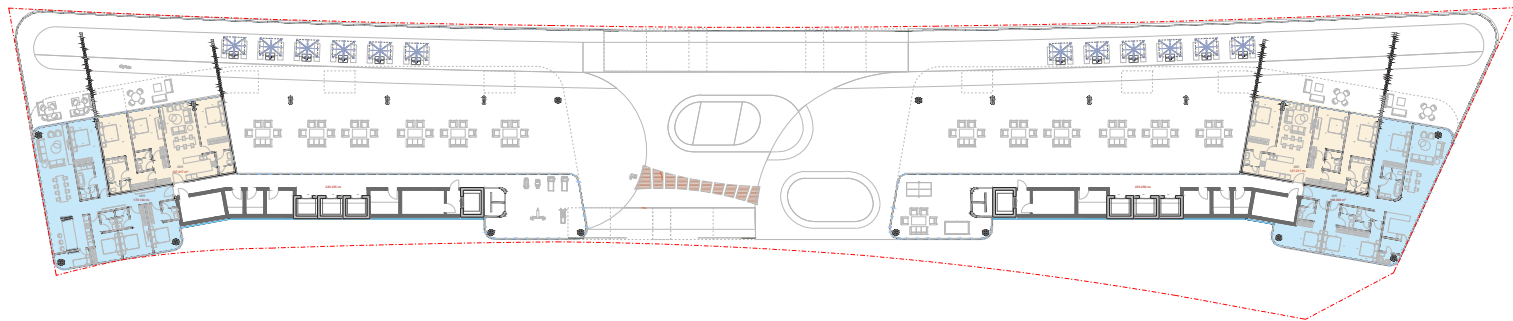


---

# MARLIN

## TOP OF PODIUM

● J1B ● 1B ● 2B ● 3B ● 4B



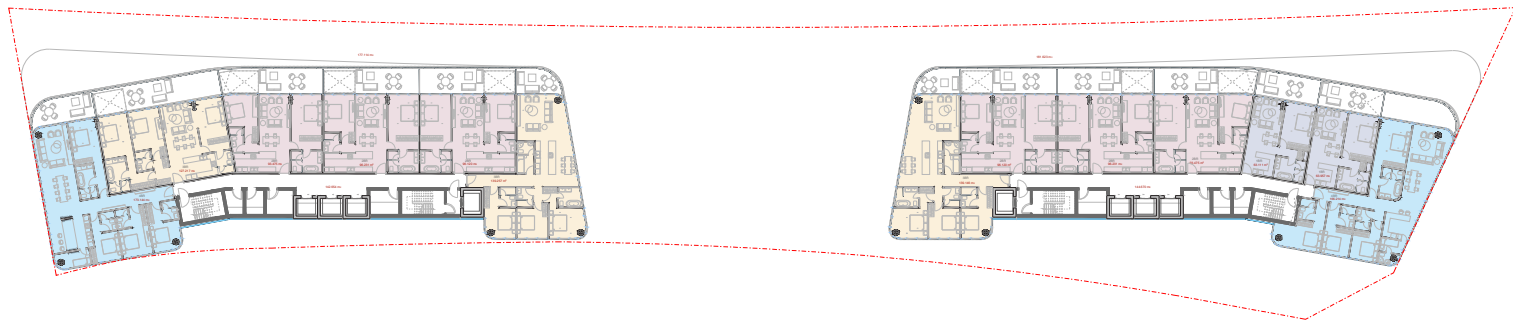


---

# MARLIN

## TYPICAL FLOOR

● 11B ● 1B ● 2B ● 3B ● 4B





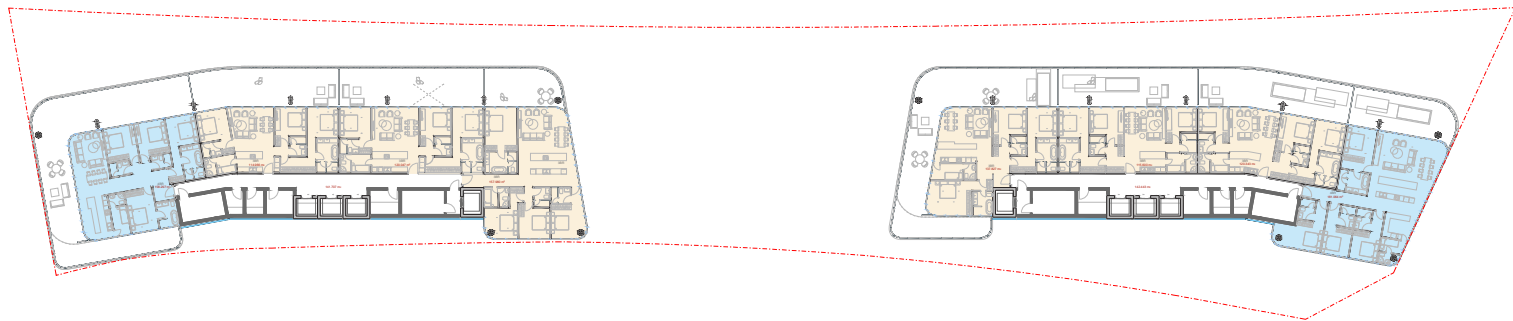


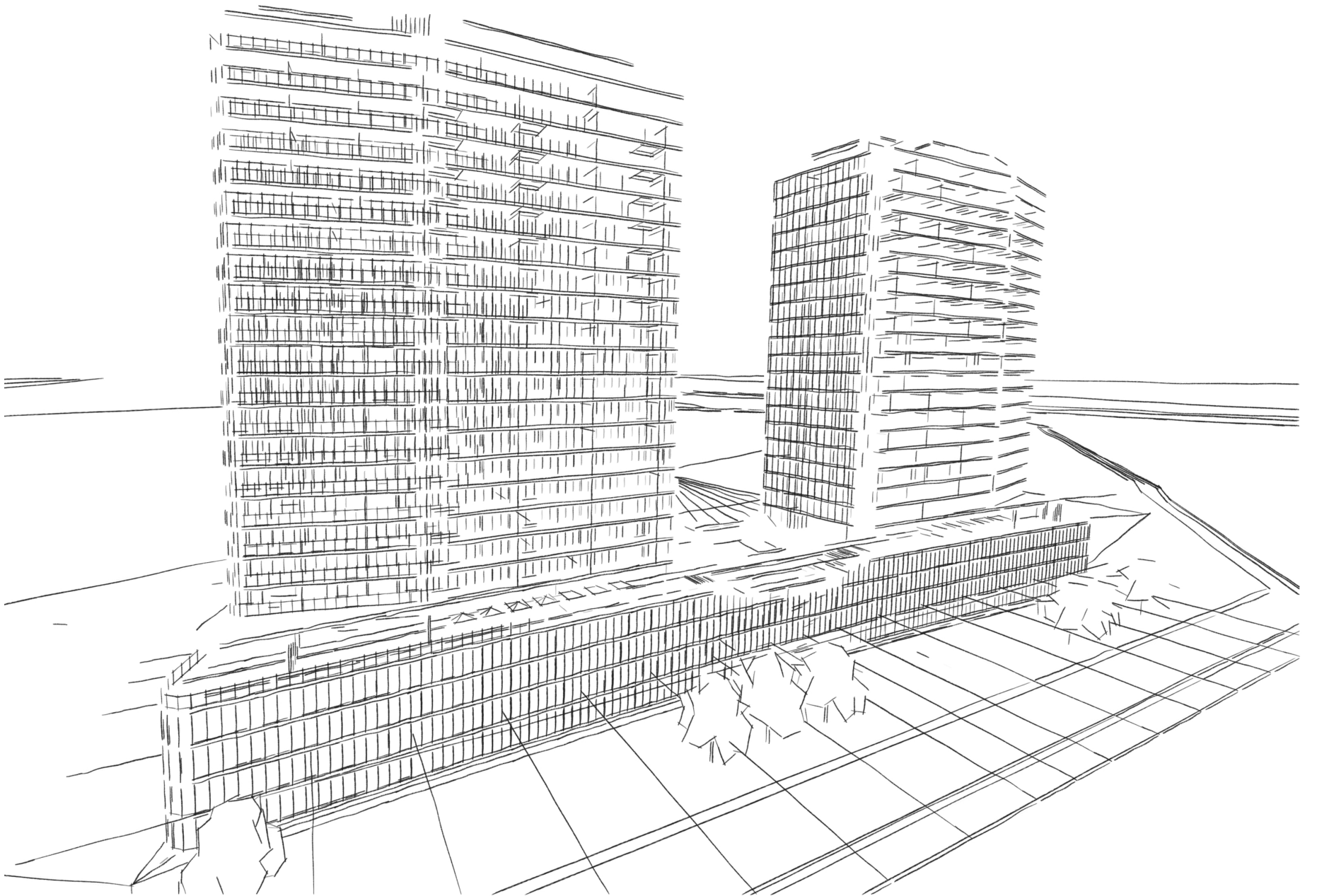
---

# MARLIN

## ROOF FLOOR

● 11B ● 1B ● 2B ● 3B ● 4B





# ريورتاج العقارية

# Reportage.

## Properties

### Abu Dhabi-UAE | Head Office

Tamouh Tower  
28<sup>th</sup> Floor, Al Reem Island  
P.O. Box: 111949  
Tollfree: +971 800 77 55 2  
info@reportageuae.com

### Dubai-UAE

Anantara Business Tower  
3<sup>rd</sup> Floor, Business Bay  
P.O. Box: 27446  
Tollfree: +971 800 77 55 2  
info@reportageuae.com

### Cairo-Egypt

Building 217  
North Teseen St.  
New Cairo  
T: +20 12 0008 1190  
info@reportageeg.com

### Istanbul-Türkiye

Levent, Tekfen Tower  
8<sup>th</sup> Floor, Office 31, Büyükdere St.  
P.O. Box 34394, Şişli  
T: +90 530 774 9595  
info@reportage.com.tr

### Riyadh-KSA

Building No. 3230  
Al Aflaj St., Al Suwaidi  
P.O. Box 12791  
T: +966 11 215 1110  
info@reportageuae.com

### Moscow-Russia

Yefremova Street 10s1, k4/4  
bld sadovye kvartaly  
P.O. Box 119048  
info@reportagerussia.com

---

For more information, visit [reportageuae.com](http://reportageuae.com)  
or call 800 77 55 2 | +971 50 244 1078

---



#### Legal Disclaimer:

The information contained in this brochure is confidential and is for the exclusive use of the recipient. This brochure may not be reproduced, distributed, delivered, or furnished to any person without the prior written approval of Reportage Properties. No representation or warranty (expressed or implied) is made or can be given with respect to the accuracy or completeness of the information herein, or that any future offer of units or apartments in the project will conform to the terms described herein. Nothing in this leaflet should be constructed as financial, legal, tax or regulatory advice. All accessories such as electronics, furniture, white goods, decorative elements and so forth included in this brochure are not part of the standard unit and used for illustration purposes only. All plans, layouts, pictures, renderings, information and details included in this brochure are indicative only and may change at any time up to the final 'as built' status in accordance with final designs of the project and regulatory approvals and planning permissions.

**R.**