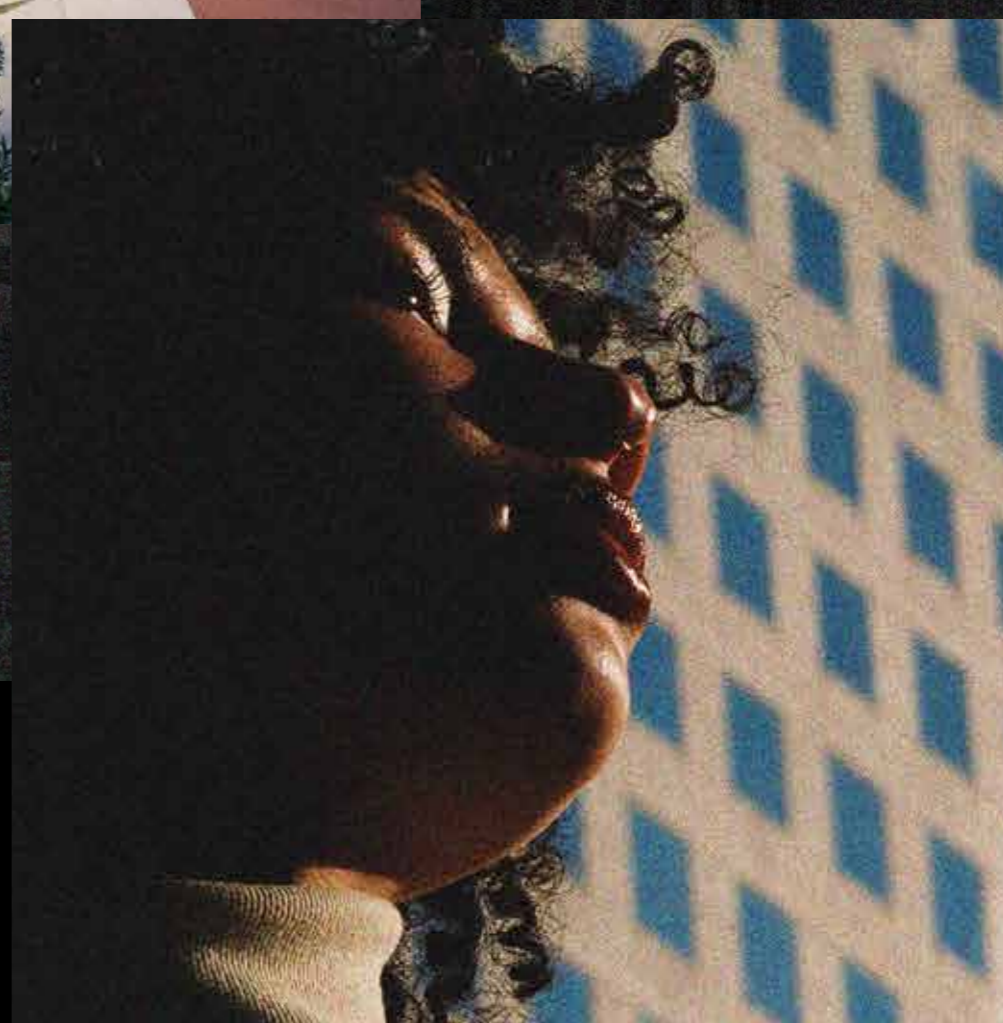


# CITY WALK

## CRESTLANE



## STARTING PRICE

2.6M

1-BEDROOM

3.2M

2-BEDROOM

4.3M

2-BEDROOM (MAID)

6M

3-BEDROOM

14.6M

4-BEDROOM

16.3M

4-BEDROOM DUPLEX

\*ALL PRICES ARE IN AED

## PAYMENT PLAN

20%

DOWN PAYMENT

ON BOOKING

10%

1ST INSTALMENT

JUNE 2025

5%

2ND INSTALMENT

OCTOBER 2025

10%

3RD INSTALMENT

MARCH 2026

10%

4TH INSTALMENT

AUGUST 2026

10%

5TH INSTALMENT

JANUARY 2027

10%

6TH INSTALMENT

MAY 2027

25%

7TH INSTALMENT (HANDOVER)

OCTOBER 2028

\*ESTIMATED CONSTRUCTION COMPLETION: OCTOBER 2028