



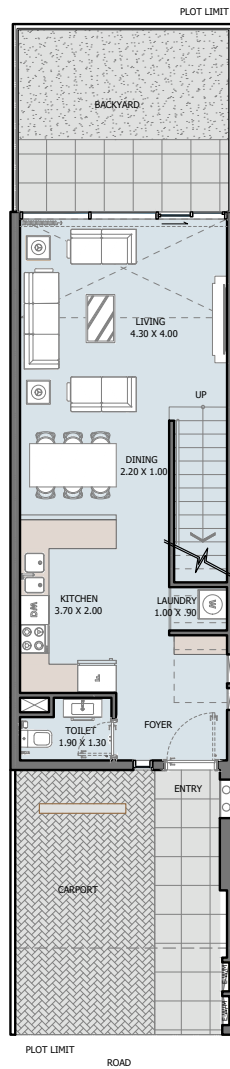
VERDANA III

Unit Types & Floor Plans

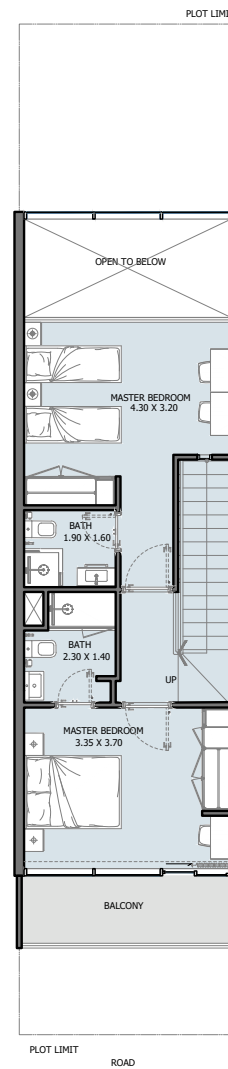


VERDANA III

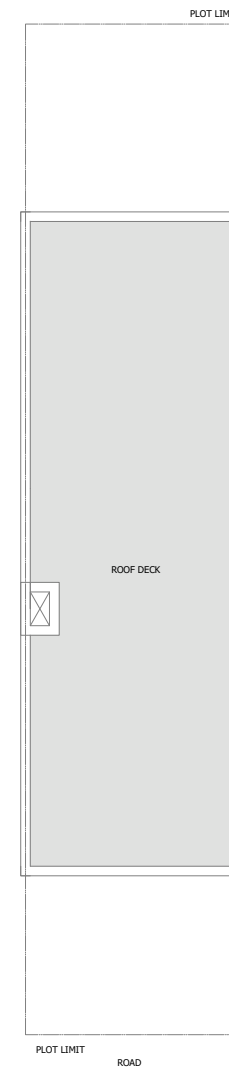
# TOWNHOUSES



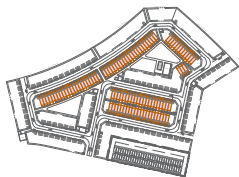
GROUND FLOOR



1ST FLOOR



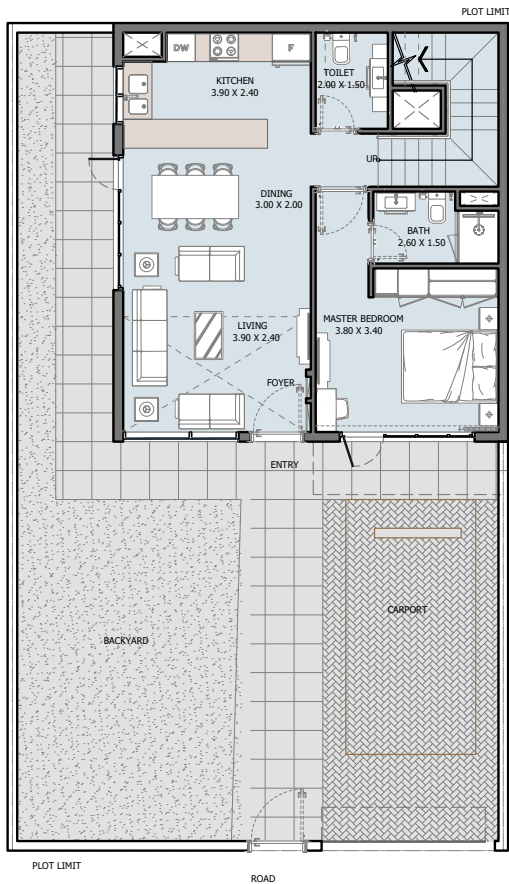
ROOF FLOOR



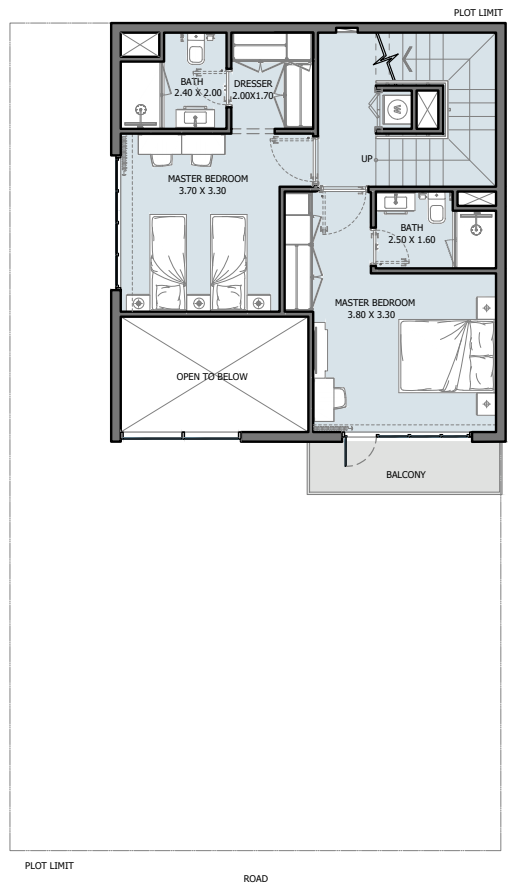
TOWNHOUSE  
2B | Type A

Internal Area	1126.12 sq.ft
Outdoor Area	527.97 to 1429.88 sq.ft
Total Area	1654.08 to 2555.99 sq.ft

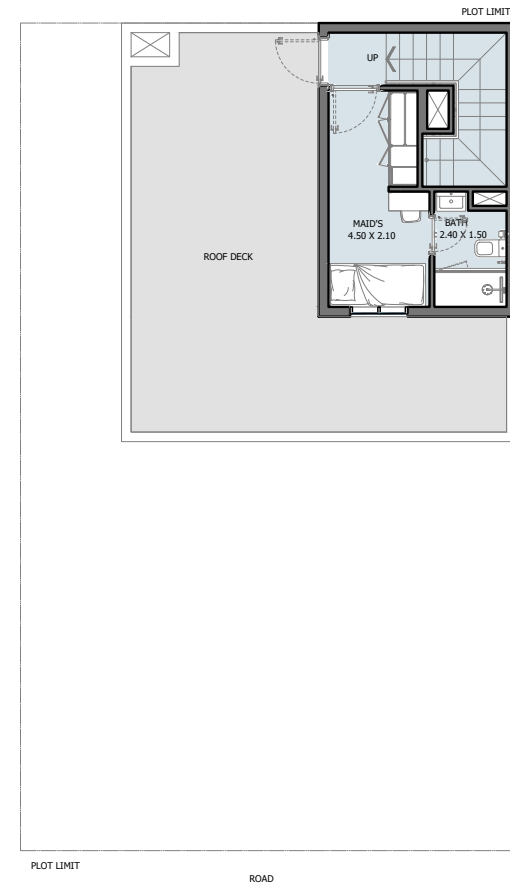
All drawings and dimensions are approximate. Drawings are not to scale and are subject to change without notice. The developer reserves the right to make revisions. The units are measured at typical floors in the building and columns may vary in size depending on the floor level. The furnishing and accessories shown are for representation only. The availability, length and width of the balcony varies depending on which floor and which orientation the unit is located within the building. There will be slight differences in the internal areas between the same unit types depending on the shaft sizes that go through the units.



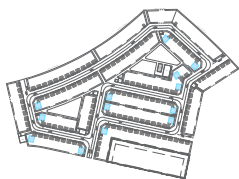
GROUND FLOOR



1ST FLOOR



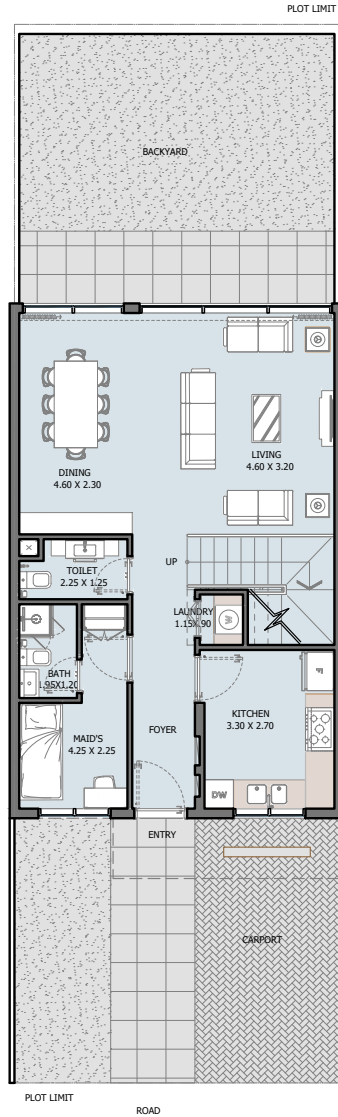
2ND FLOOR



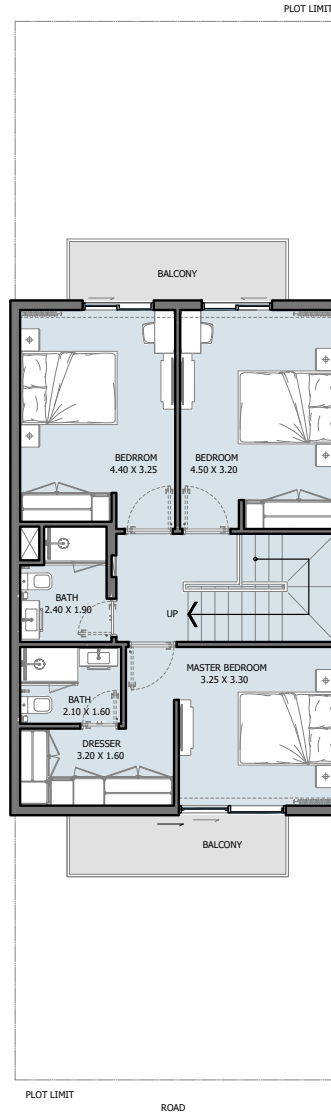
**TOWNHOUSE  
3B | Type A**

Internal Area	1646.55 sq.ft
Outdoor Area	1221.06 to 2069.36 sq.ft
<b>Total Area</b>	<b>2867.61 to 3715.91 sq.ft</b>

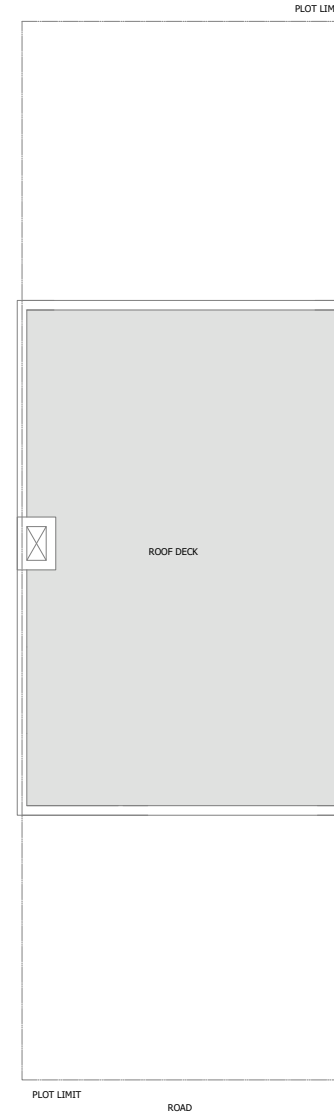
All drawings and dimensions are approximate. Drawings are not to scale and are subject to change without notice. The developer reserves the right to make revisions. The units are measured at typical floors in the building and columns may vary in size depending on the floor level. The furnishing and accessories shown are for representation only. The availability, length and width of the balcony varies depending on which floor and which orientation the unit is located within the building. There will be slight differences in the internal areas between the same unit types depending on the shaft sizes that go through the units.



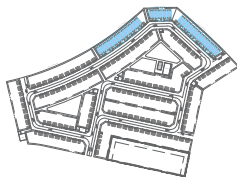
GROUND FLOOR



1ST FLOOR



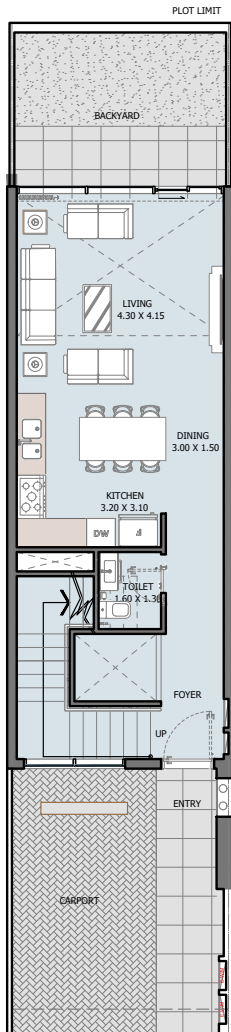
ROOF FLOOR



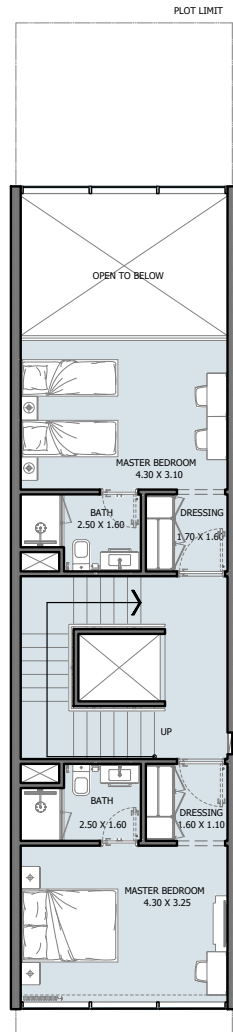
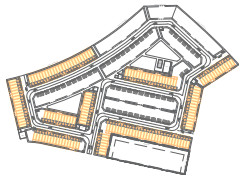
## TOWNHOUSE 3B | Type B

Internal Area	1550.32 sq.ft
Outdoor Area	874.57 to 2012.53 sq.ft
Total Area	2424.89 to 3562.85 sq.ft

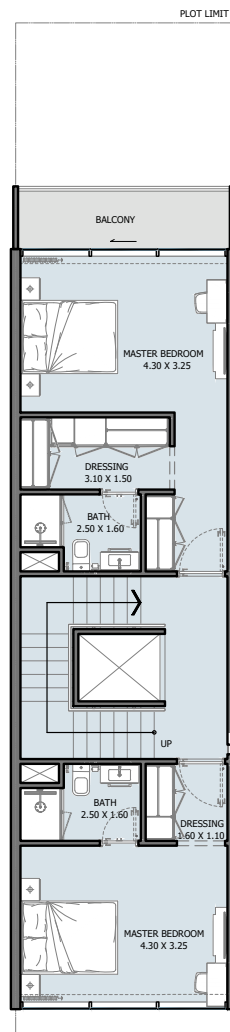
All drawings and dimensions are approximate. Drawings are not to scale and are subject to change without notice. The developer reserves the right to make revisions. The units are measured at typical floors in the building and columns may vary in size depending on the floor level. The furnishing and accessories shown are for representation only. The availability, length and width of the balcony varies depending on which floor and which orientation the unit is located within the building. There will be slight differences in the internal areas between the same unit types depending on the shaft sizes that go through the units.



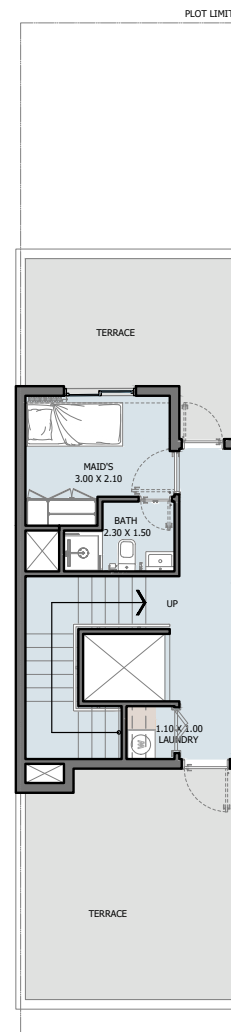
PLOT LIMIT ROAD  
**GROUND FLOOR**



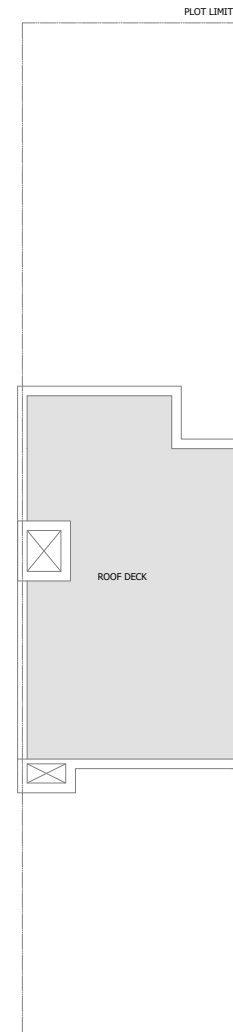
PLOT LIMIT ROAD  
**1ST FLOOR**



PLOT LIMIT ROAD  
**2ND FLOOR**



PLOT LIMIT ROAD  
**3RD FLOOR**

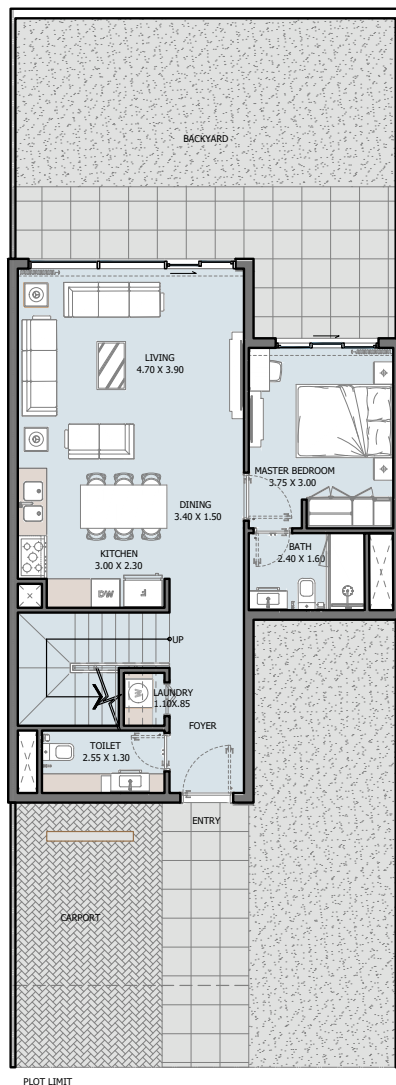


PLOT LIMIT ROAD  
**ROOF FLOOR**

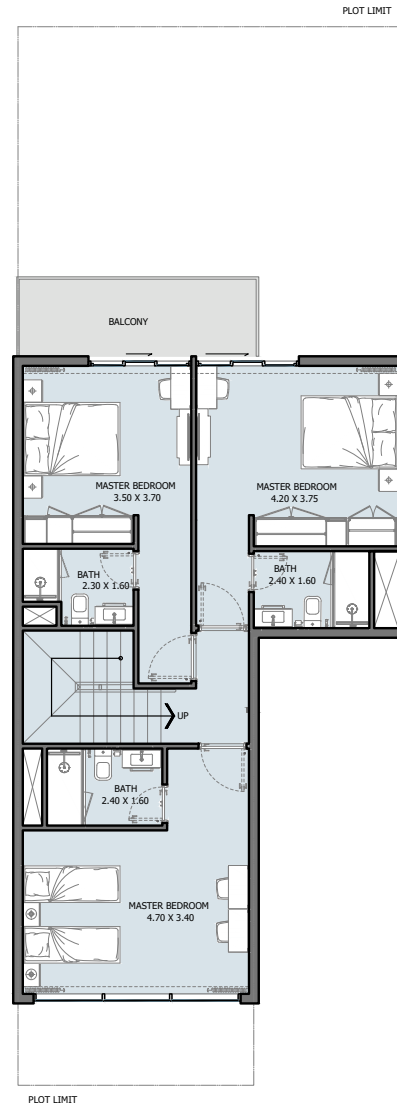
**TOWNHOUSE  
4B | Type A**

Internal Area	2309.50 sq.ft
Outdoor Area	476.52 to 1920.06 sq.ft
<b>Total Area</b>	<b>2786.02 to 4229.56 sq.ft</b>

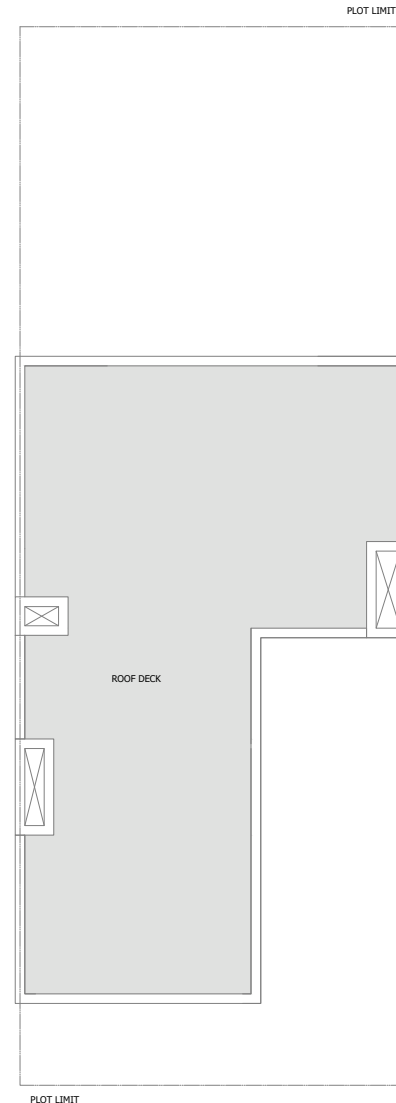
All drawings and dimensions are approximate. Drawings are not to scale and are subject to change without notice. The developer reserves the right to make revisions. The units are measured at typical floors in the building and columns may vary in size depending on the floor level. The furnishing and accessories shown are for representation only. The availability, length and width of the balcony varies depending on which floor and which orientation the unit is located within the building. There will be slight differences in the internal areas between the same unit types depending on the shaft sizes that go through the units.



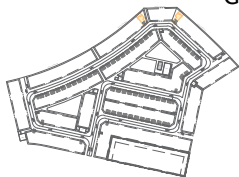
GROUND FLOOR



1ST FLOOR



ROOF FLOOR



**TOWNHOUSE  
4B | Type B**

Internal Area	1655.49 sq.ft
Outdoor Area	1848.59 to 2080.12 sq.ft
Total Area	3504.08 to 3735.61 sq.ft

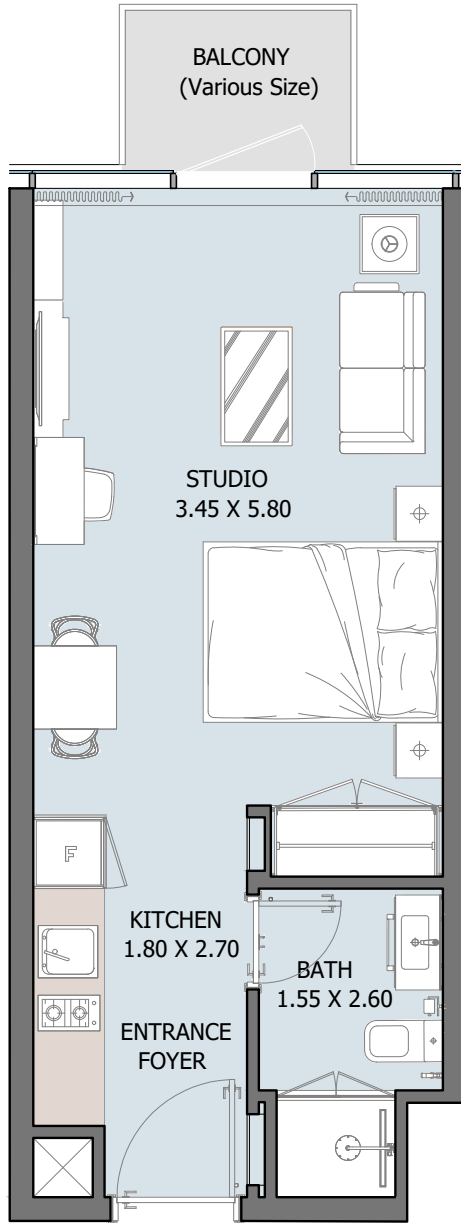
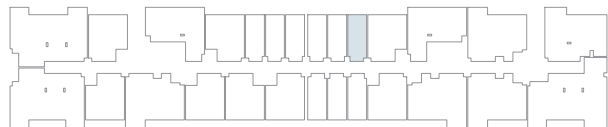
All drawings and dimensions are approximate. Drawings are not to scale and are subject to change without notice. The developer reserves the right to make revisions. The units are measured at typical floors in the building and columns may vary in size depending on the floor level. The furnishing and accessories shown are for representation only. The availability, length and width of the balcony varies depending on which floor and which orientation the unit is located within the building. There will be slight differences in the internal areas between the same unit types depending on the shaft sizes that go through the units.



VERDANA III

# UNIT TYPES



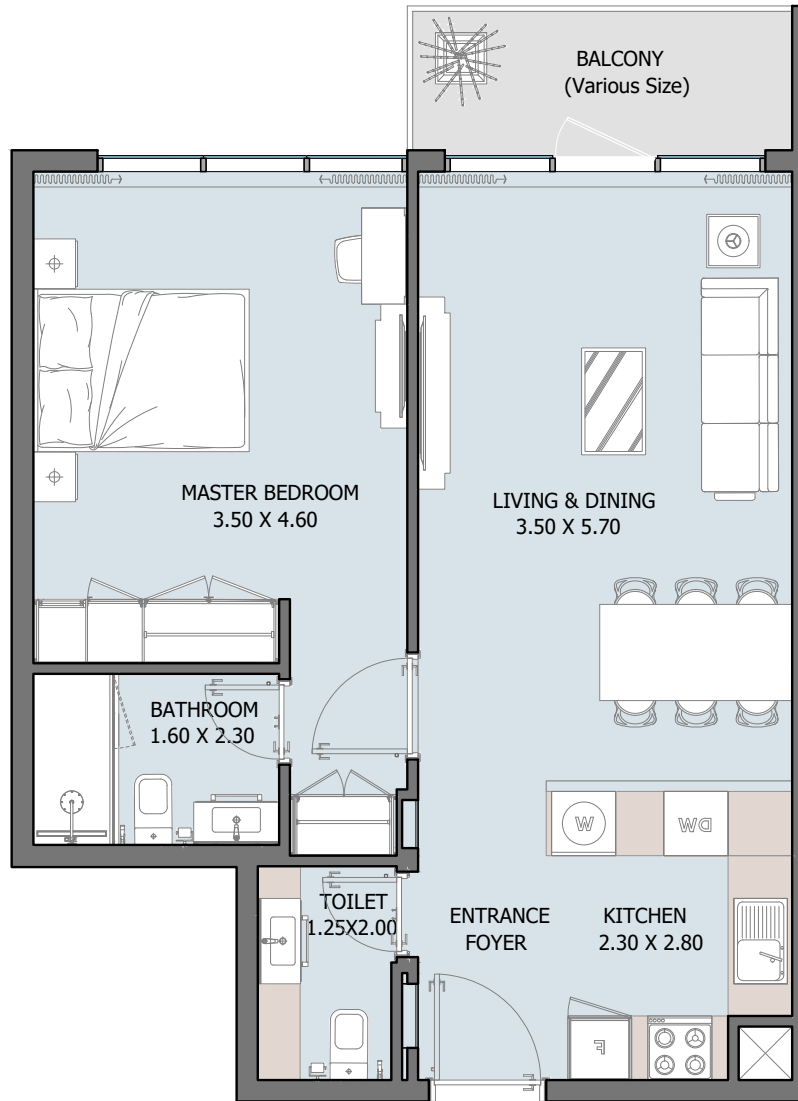


## ST | Type A

From 1<sup>st</sup> to 15<sup>th</sup> Floor

Internal Area	336.59 sq.ft
Outdoor Area	26.59 to 154.14 sq.ft
<b>Total Area</b>	<b>363.17 to 490.73 sq.ft</b>

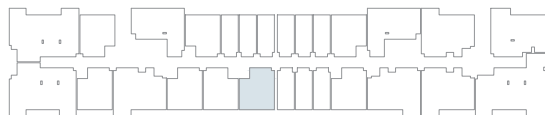
All drawings and dimensions are approximate. Drawings are not to scale and are subject to change without notice. The developer reserves the right to make revisions. The units are measured at typical floors in the building and columns may vary in size depending on the floor level. The furnishing and accessories shown are for representation only. The availability, length and width of the balcony varies depending on which floor and which orientation the unit is located within the building. There will be slight differences in the internal areas between the same unit types depending on the shaft sizes that go through the units.



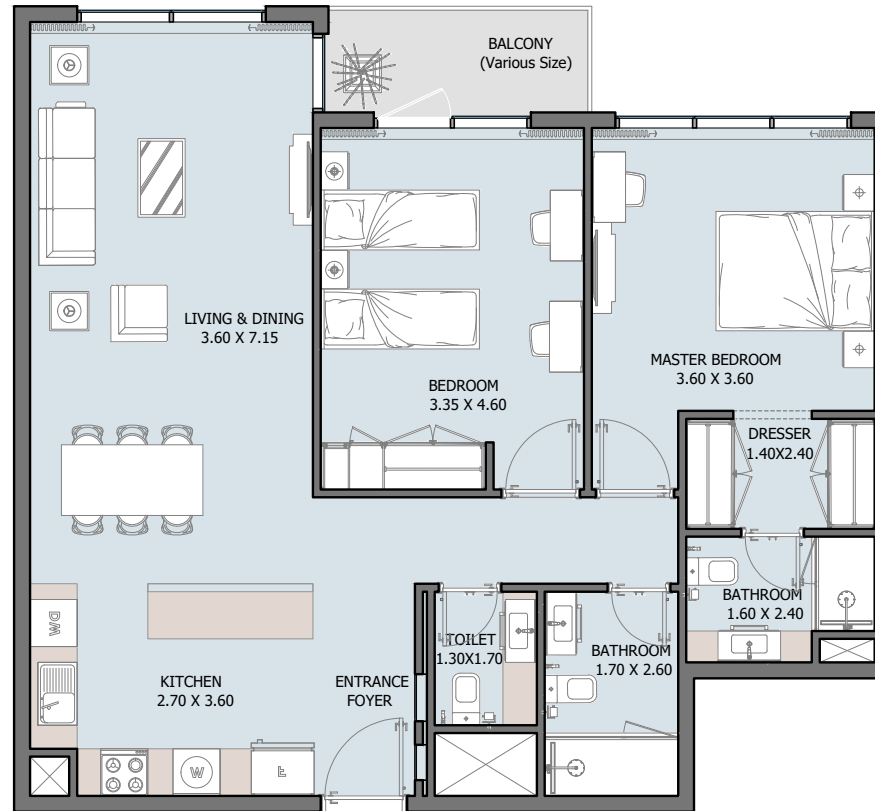
## 1B | Type A

From 1<sup>st</sup> to 15<sup>th</sup> Floor

Internal Area	637.22 sq.ft
Outdoor Area	47.58 to 317.21 sq.ft
Total Area	684.80 to 954.44 sq.ft

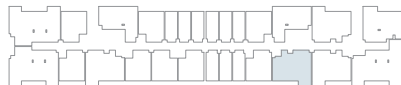


All drawings and dimensions are approximate. Drawings are not to scale and are subject to change without notice. The developer reserves the right to make revisions. The units are measured at typical floors in the building and columns may vary in size depending on the floor level. The furnishing and accessories shown are for representation only. The availability, length and width of the balcony varies depending on which floor and which orientation the unit is located within the building. There will be slight differences in the internal areas between the same unit types depending on the shaft sizes that go through the units.



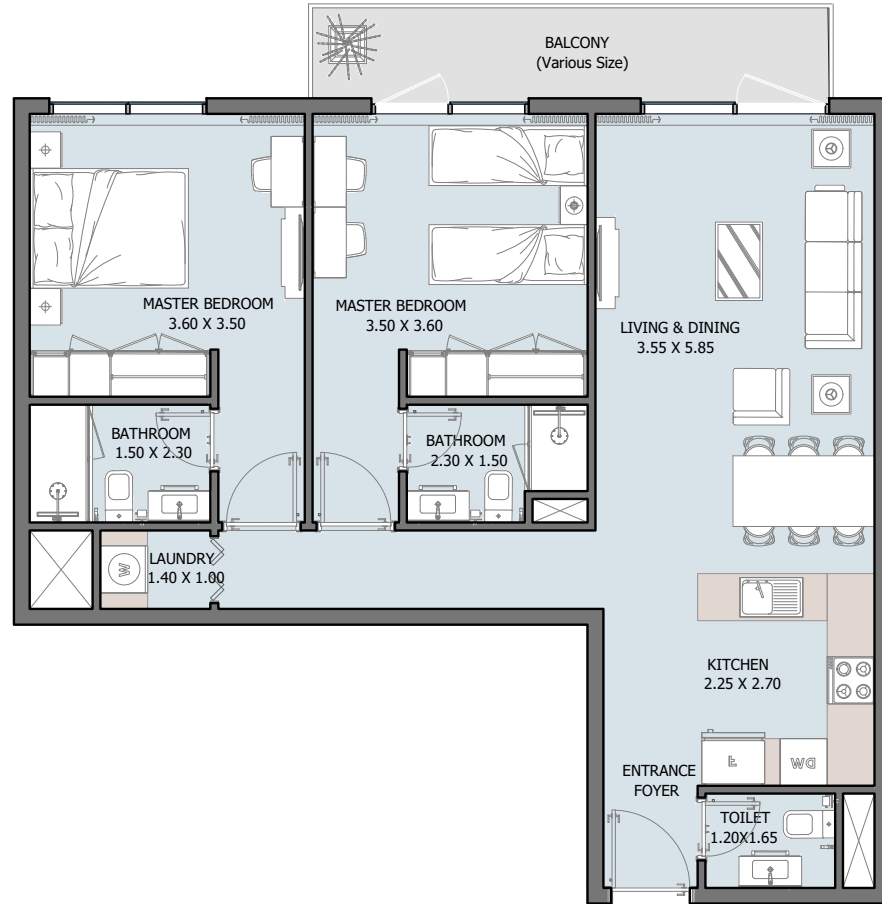
## 2B | Type A

From 1<sup>st</sup> to 15<sup>th</sup> Floor



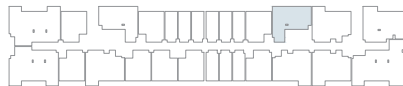
Internal Area	1025.15 sq.ft
Outdoor Area	44.13 to 425.50 sq.ft
Total Area	1069.29 to 1450.65 sq.ft

All drawings and dimensions are approximate. Drawings are not to scale and are subject to change without notice. The developer reserves the right to make revisions. The units are measured at typical floors in the building and columns may vary in size depending on the floor level. The furnishing and accessories shown are for representation only. The availability, length and width of the balcony varies depending on which floor and which orientation the unit is located within the building. There will be slight differences in the internal areas between the same unit types depending on the shaft sizes that go through the units.



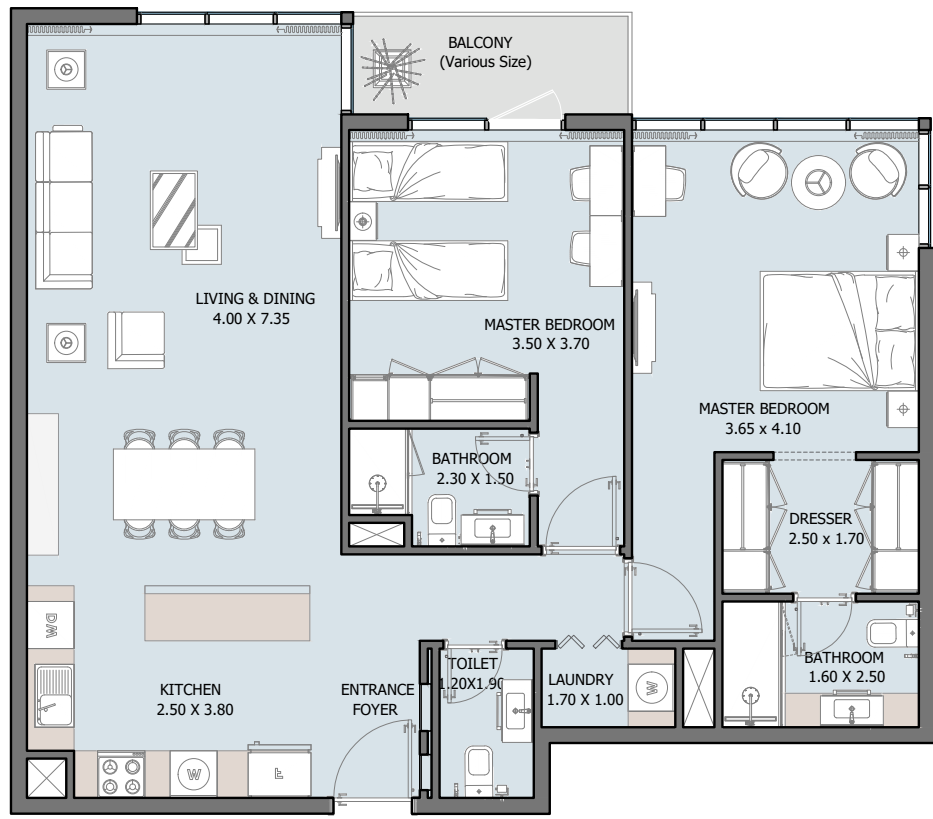
## 2B | Type B

From 1<sup>st</sup> to 15<sup>th</sup> Floor



Internal Area	897.60 sq.ft
Outdoor Area	53.28 to 323.99 sq.ft
Total Area	950.88 to 1221.60 sq.ft

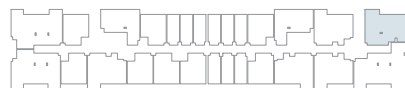
All drawings and dimensions are approximate. Drawings are not to scale and are subject to change without notice. The developer reserves the right to make revisions. The units are measured at typical floors in the building and columns may vary in size depending on the floor level. The furnishing and accessories shown are for representation only. The availability, length and width of the balcony varies depending on which floor and which orientation the unit is located within the building. There will be slight differences in the internal areas between the same unit types depending on the shaft sizes that go through the units.



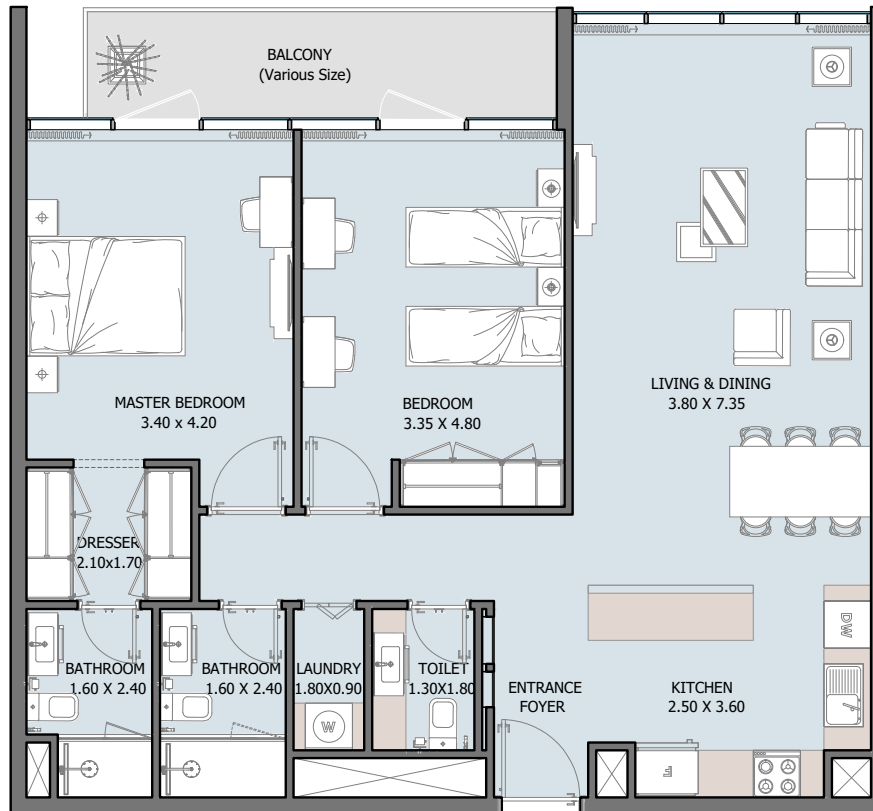
## 2B | Type C

From 1<sup>st</sup> to 15<sup>th</sup> Floor

Internal Area	1088.23 sq.ft
Outdoor Area	46.72 to 444.23 sq.ft
Total Area	1134.95 to 1532.46 sq.ft

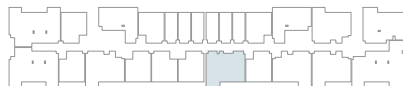


All drawings and dimensions are approximate. Drawings are not to scale and are subject to change without notice. The developer reserves the right to make revisions. The units are measured at typical floors in the building and columns may vary in size depending on the floor level. The furnishing and accessories shown are for representation only. The availability, length and width of the balcony varies depending on which floor and which orientation the unit is located within the building. There will be slight differences in the internal areas between the same unit types depending on the shaft sizes that go through the units.



## 2B | Type D

From 1<sup>st</sup> to 4<sup>th</sup> Floor



Internal Area	1066.27 sq.ft
Outdoor Area	83.64 to 239.60 sq.ft
Total Area	1149.91 to 1305.88 sq.ft

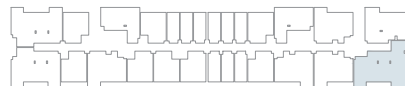
All drawings and dimensions are approximate. Drawings are not to scale and are subject to change without notice. The developer reserves the right to make revisions. The units are measured at typical floors in the building and columns may vary in size depending on the floor level. The furnishing and accessories shown are for representation only. The availability, length and width of the balcony varies depending on which floor and which orientation the unit is located within the building. There will be slight differences in the internal areas between the same unit types depending on the shaft sizes that go through the units.



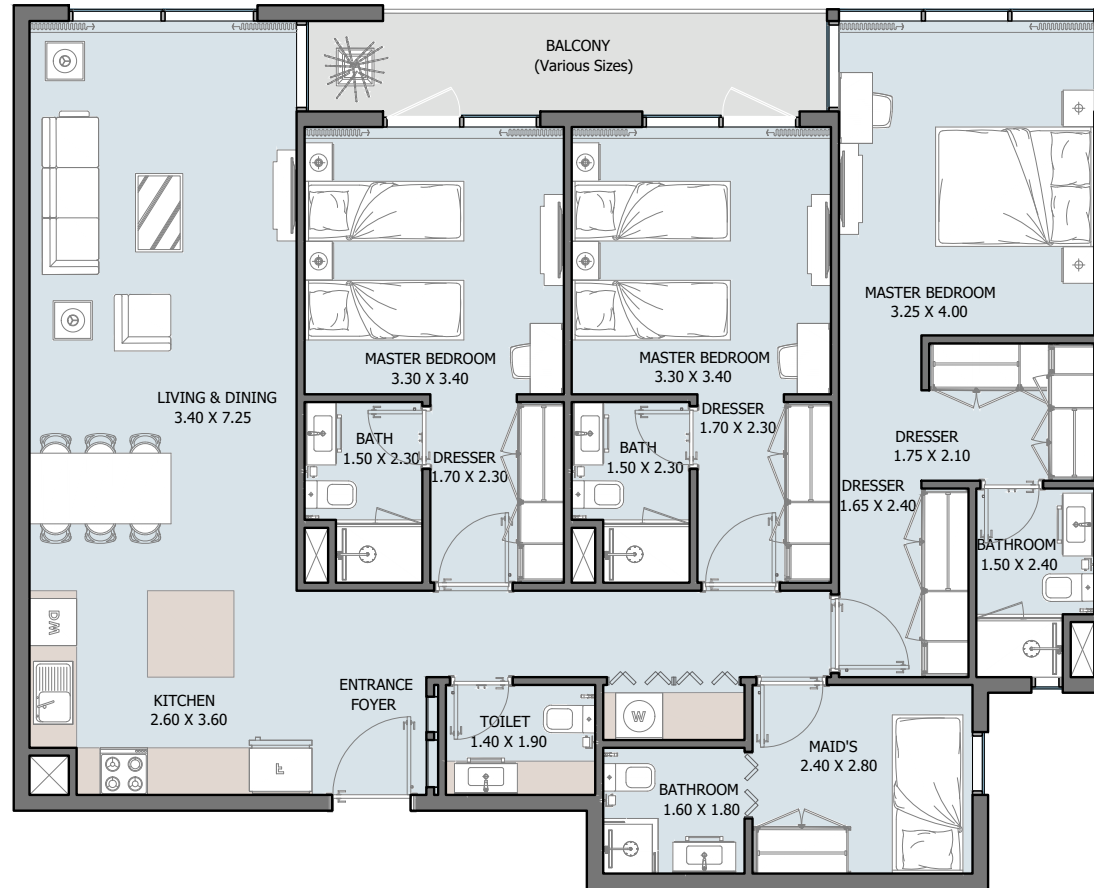
## 3B | Type A

From 1<sup>st</sup> to 15<sup>th</sup> Floor

Internal Area	1552.26 sq.ft
Outdoor Area	86.76 to 306.66 sq.ft
Total Area	1639.02 to 1858.93 sq.ft

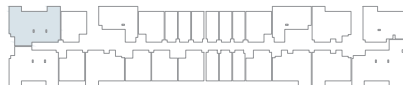


All drawings and dimensions are approximate. Drawings are not to scale and are subject to change without notice. The developer reserves the right to make revisions. The units are measured at typical floors in the building and columns may vary in size depending on the floor level. The furnishing and accessories shown are for representation only. The availability, length and width of the balcony varies depending on which floor and which orientation the unit is located within the building. There will be slight differences in the internal areas between the same unit types depending on the shaft sizes that go through the units.



## 3B | Type B

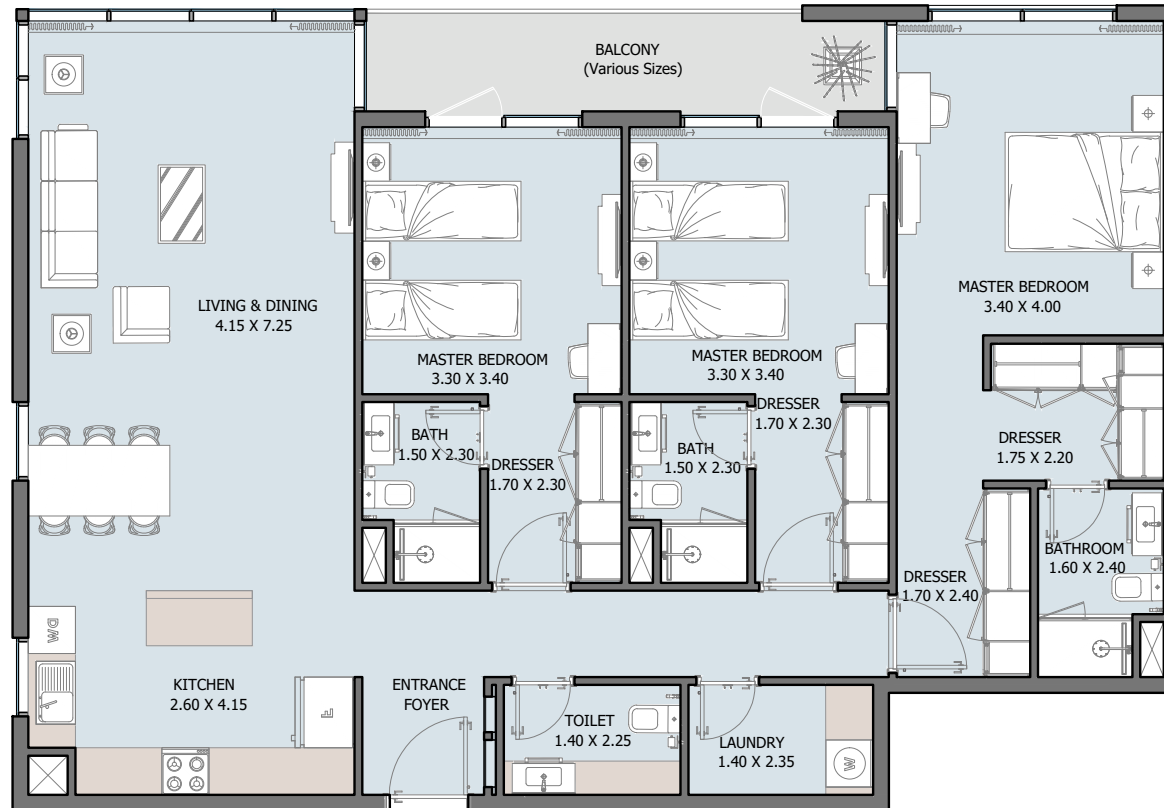
From 1<sup>st</sup> to 15<sup>th</sup> Floor



Internal Area	1435.04 sq.ft
Outdoor Area	86.97 to 378.89 sq.ft
Total Area	1522.02 to 1813.93 sq.ft

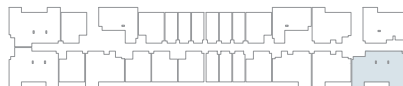
All drawings and dimensions are approximate. Drawings are not to scale and are subject to change without notice. The developer reserves the right to make revisions. The units are measured at typical floors in the building and columns may vary in size depending on the floor level. The furnishing and accessories shown are for representation only. The availability, length and width of the balcony varies depending on which floor and which orientation the unit is located within the building. There will be slight differences in the internal areas between the same unit types depending on the shaft sizes that go through the units.





## 3B | Type C

From 1<sup>st</sup> to 15<sup>th</sup> Floor



Internal Area	1489.29 sq.ft
Outdoor Area	90.42 to 1125.37 sq.ft
<b>Total Area</b>	<b>1579.71 to 2614.66 sq.ft</b>

All drawings and dimensions are approximate. Drawings are not to scale and are subject to change without notice. The developer reserves the right to make revisions. The units are measured at typical floors in the building and columns may vary in size depending on the floor level. The furnishing and accessories shown are for representation only. The availability, length and width of the balcony varies depending on which floor and which orientation the unit is located within the building. There will be slight differences in the internal areas between the same unit types depending on the shaft sizes that go through the units.



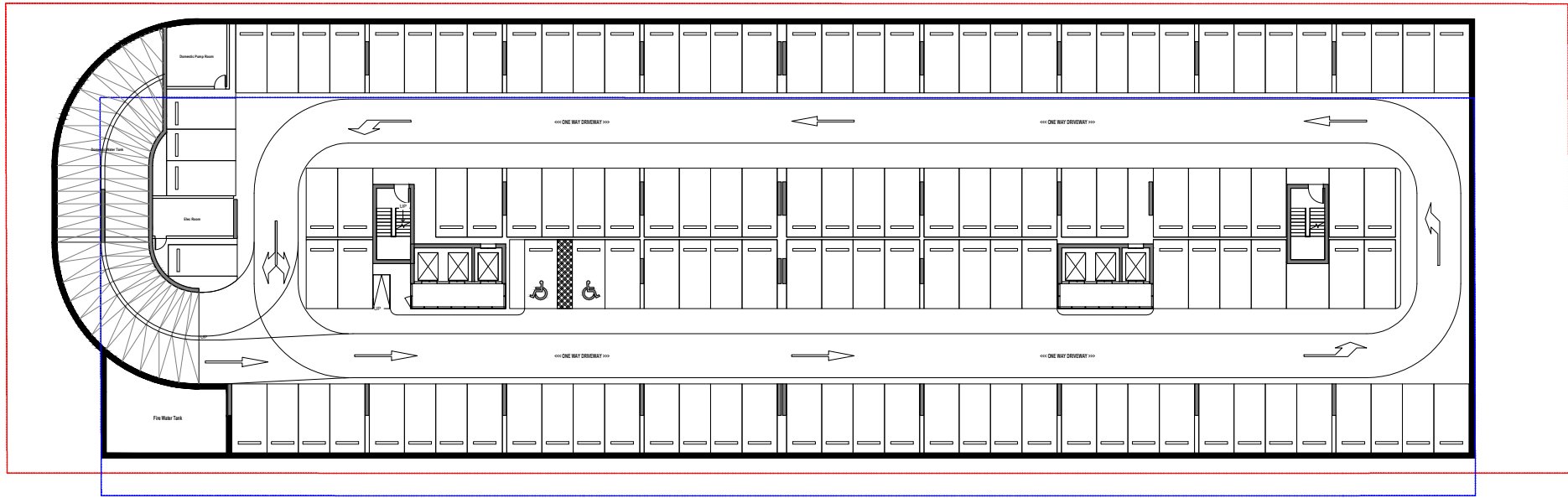
VERDANA III

# FLOOR PLANS

# VERDANA- 4

## BASEMENT 02

● 11B ● 1B ● 2B ● 3B ● 4B

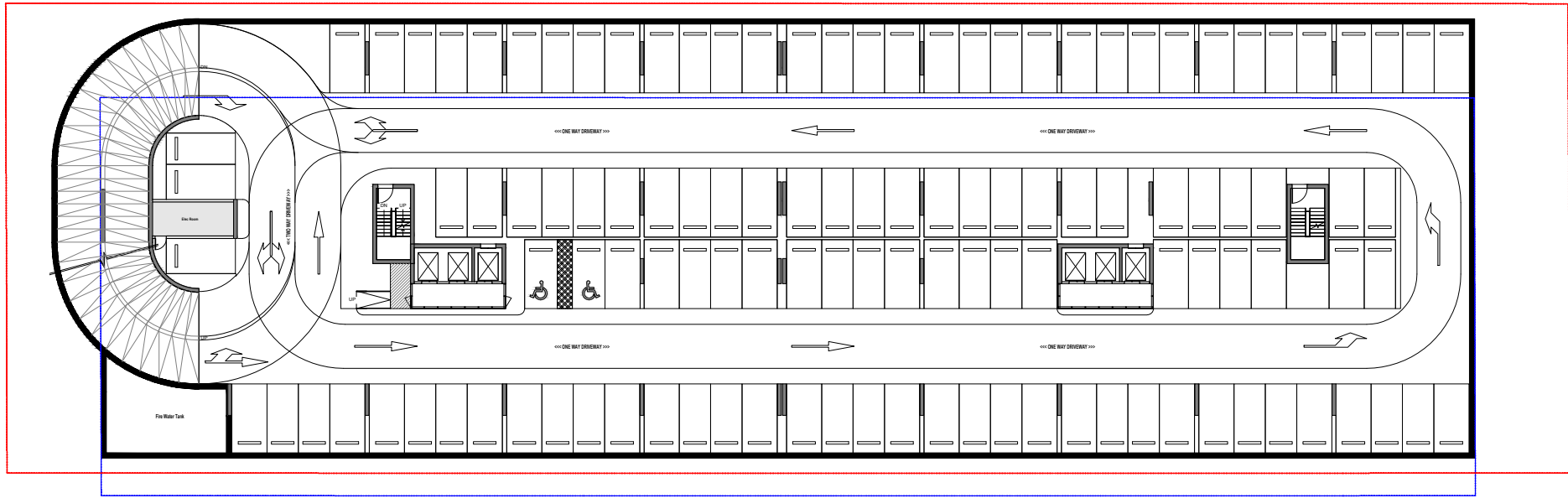


Parking No. 127

# VERDANA- 4

## BASEMENT 01

- 11B
- 1B
- 2B
- 3B
- 4B



Parking No. 119

# VERDANA- 4

## GROUND FLOOR

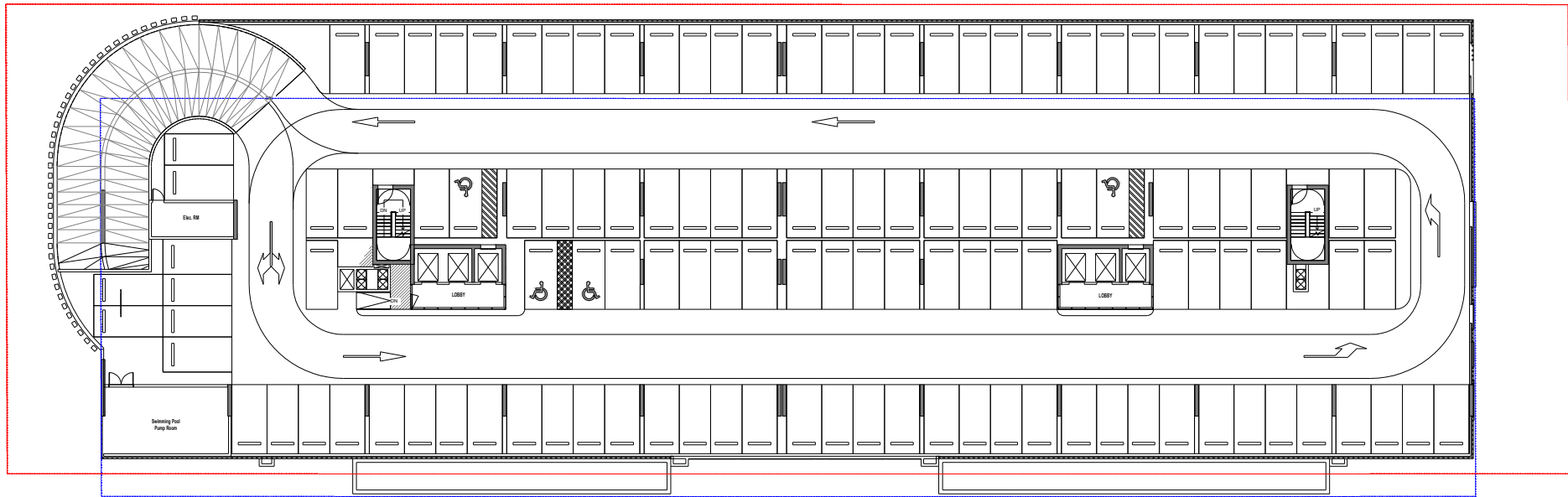
- 11B
- 1B
- 2B
- 3B
- 4B



# VERDANA- 4

## PODIUM 01

● 11B ● 1B ● 2B ● 3B ● 4B

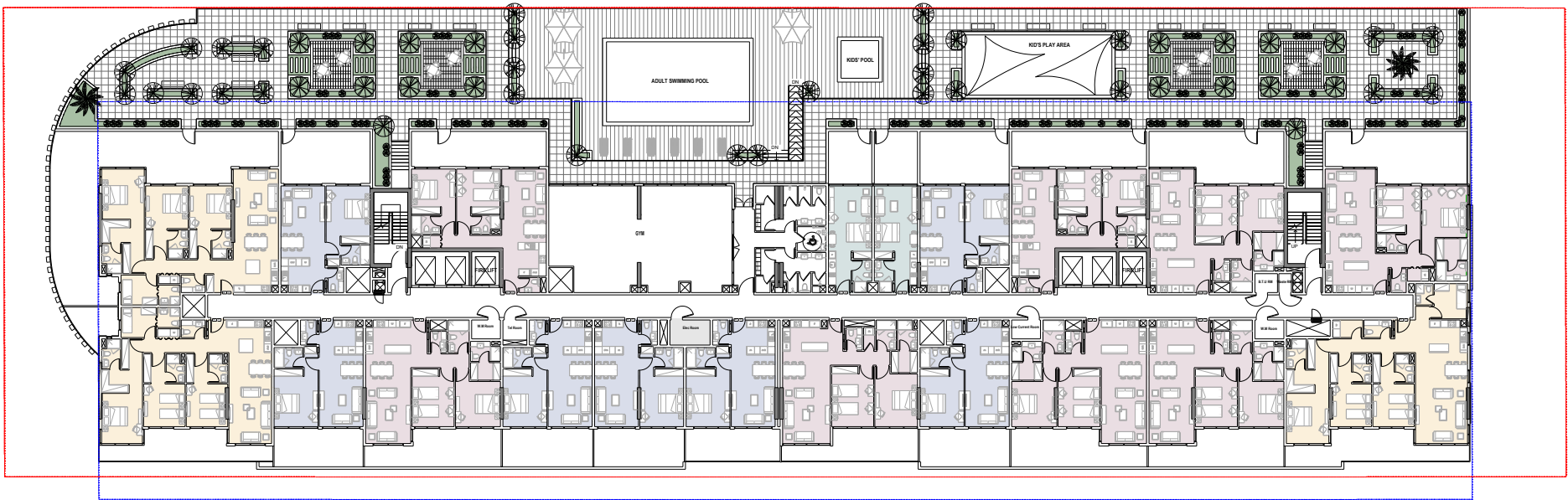


Parking No. 126

# VERDANA- 4

## FIRST FLOOR

● 11B ● 1B ● 2B ● 3B ● 4B

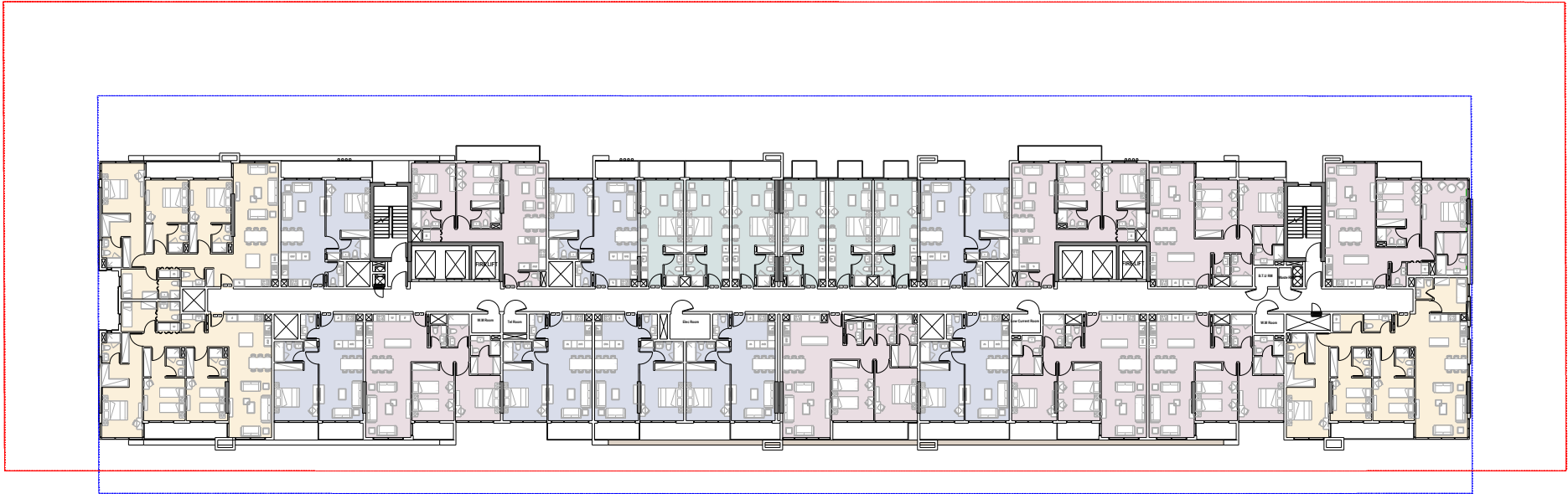


---

# VERDANA- 4

TYPICAL 2<sup>nd</sup> TO 4<sup>th</sup>

● 11B ● 1B ● 2B ● 3B ● 4B



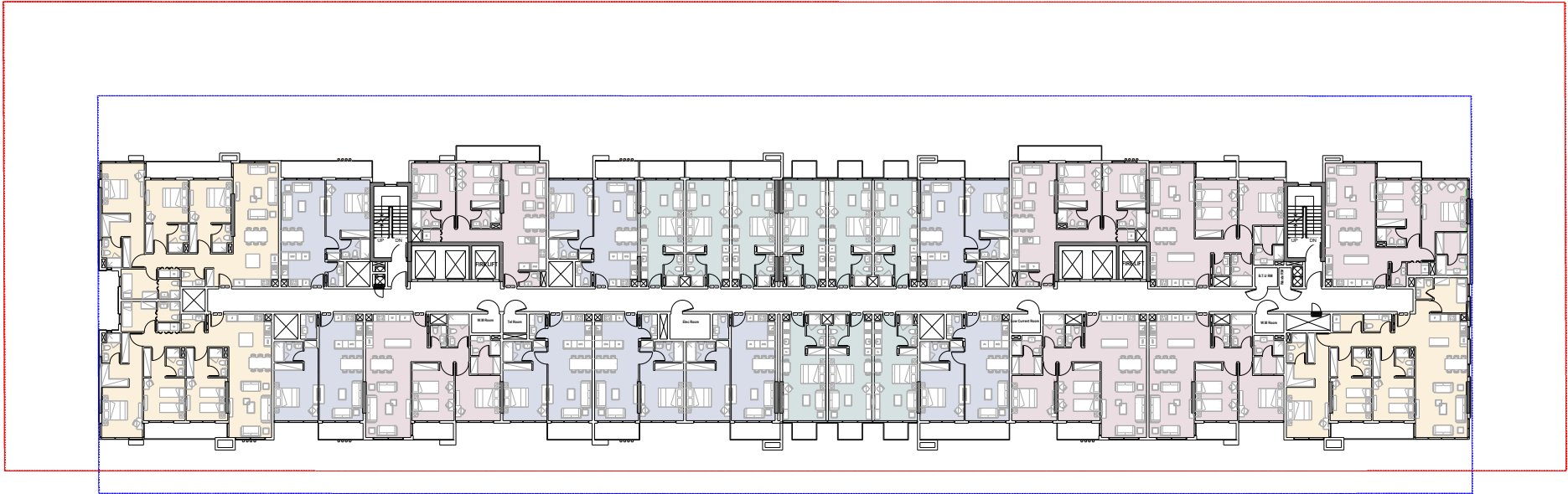


---

# VERDANA- 4

TYPICAL 5<sup>th</sup> TO 15<sup>th</sup>

● 11B ● 1B ● 2B ● 3B ● 4B

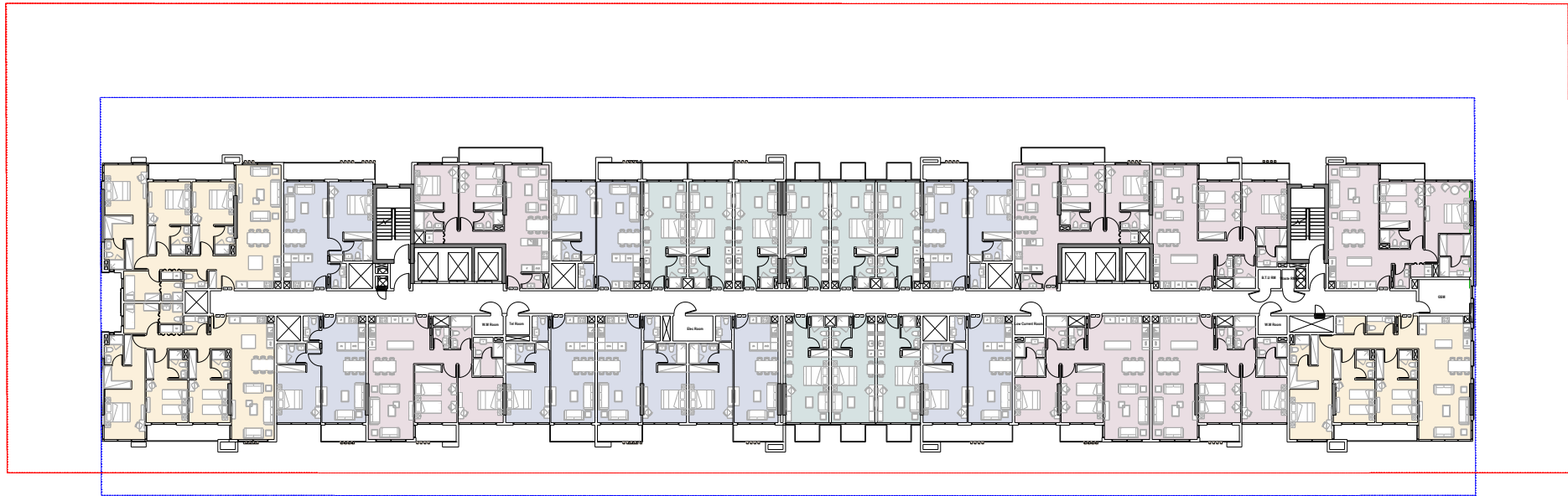


---

# VERDANA- 4

## 9TH FLOOR

● 11B ● 1B ● 2B ● 3B ● 4B



*Thank You*

**R.**