

MONACO
Mansions

FLOOR PLANS

MONACO MANSIONS 1

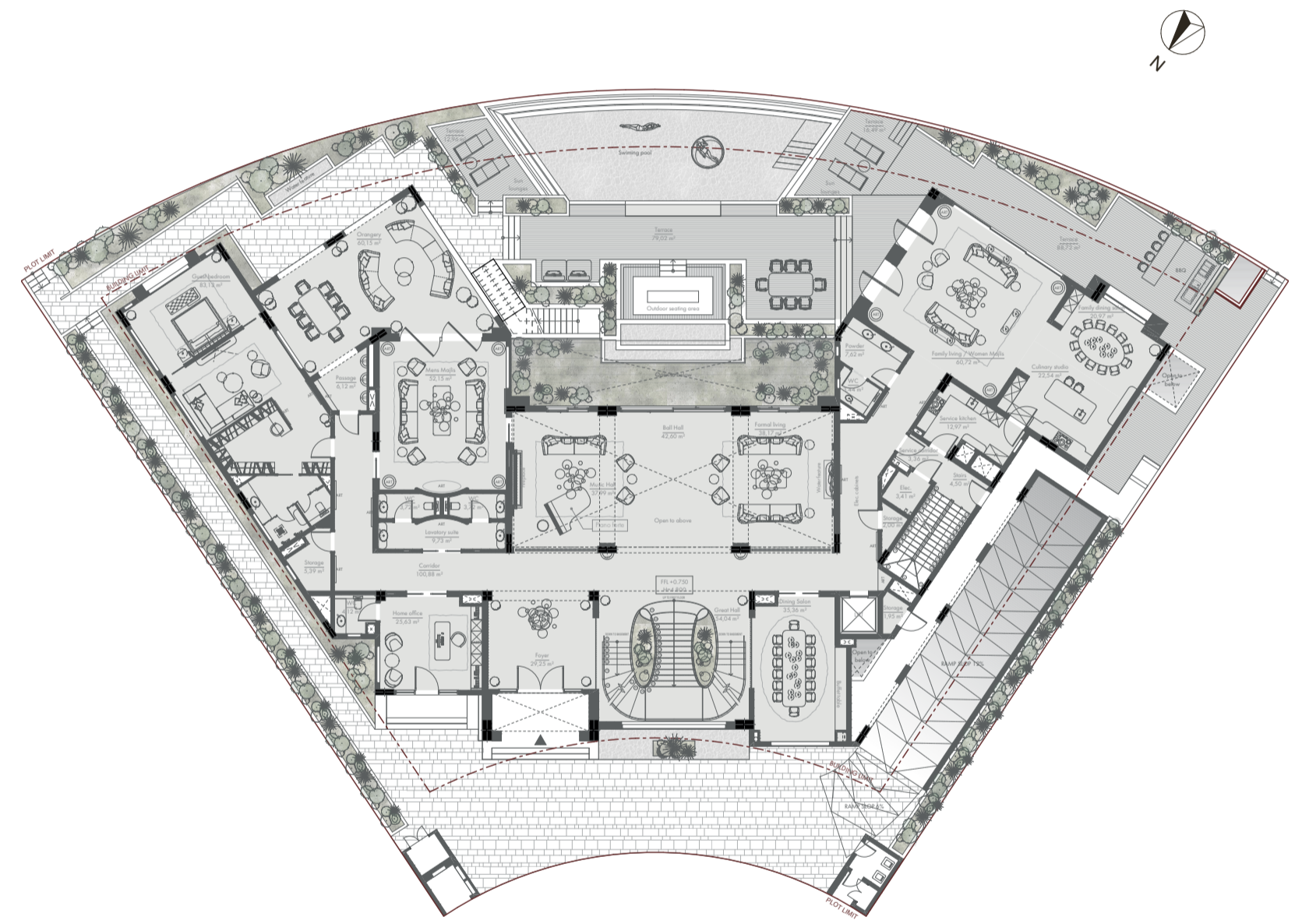
FLOOR PLAN - MONACO 1
BASEMENT FLOOR



Site Plan 
 0 1 2 3 4 5m

Ground floor (without improving the terrace, technical premises and parking): 614,91 m²
 Total area (without improving the terrace, technical premises and parking): 1 926,41 m²
 Total area of technical premises and parking: 325,79 m²
 Total area of terraces: 650,85 m²

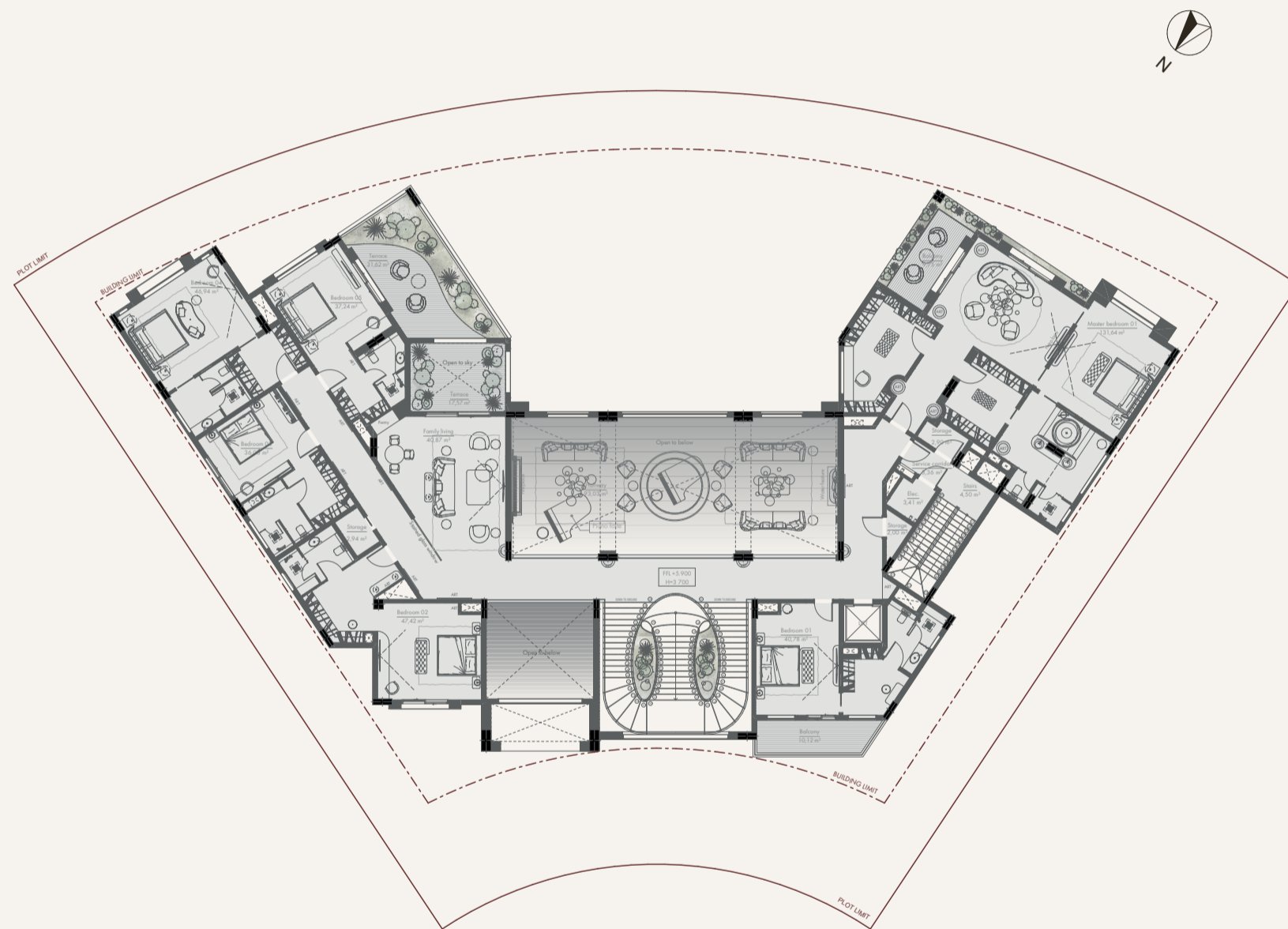
FLOOR PLAN - MONACO 1
GROUND FLOOR



Site Plan 
 0 1 2 3 4 5m

Ground floor (without improving the terrace, technical premises and parking): 666,02 m²
 Total area (without improving the terrace, technical premises and parking): 1 926,41 m²
 Total area of technical premises and parking: 325,79 m²
 Total area of terraces: 650,85 m²

FLOOR PLAN - MONACO 1
FIRST FLOOR

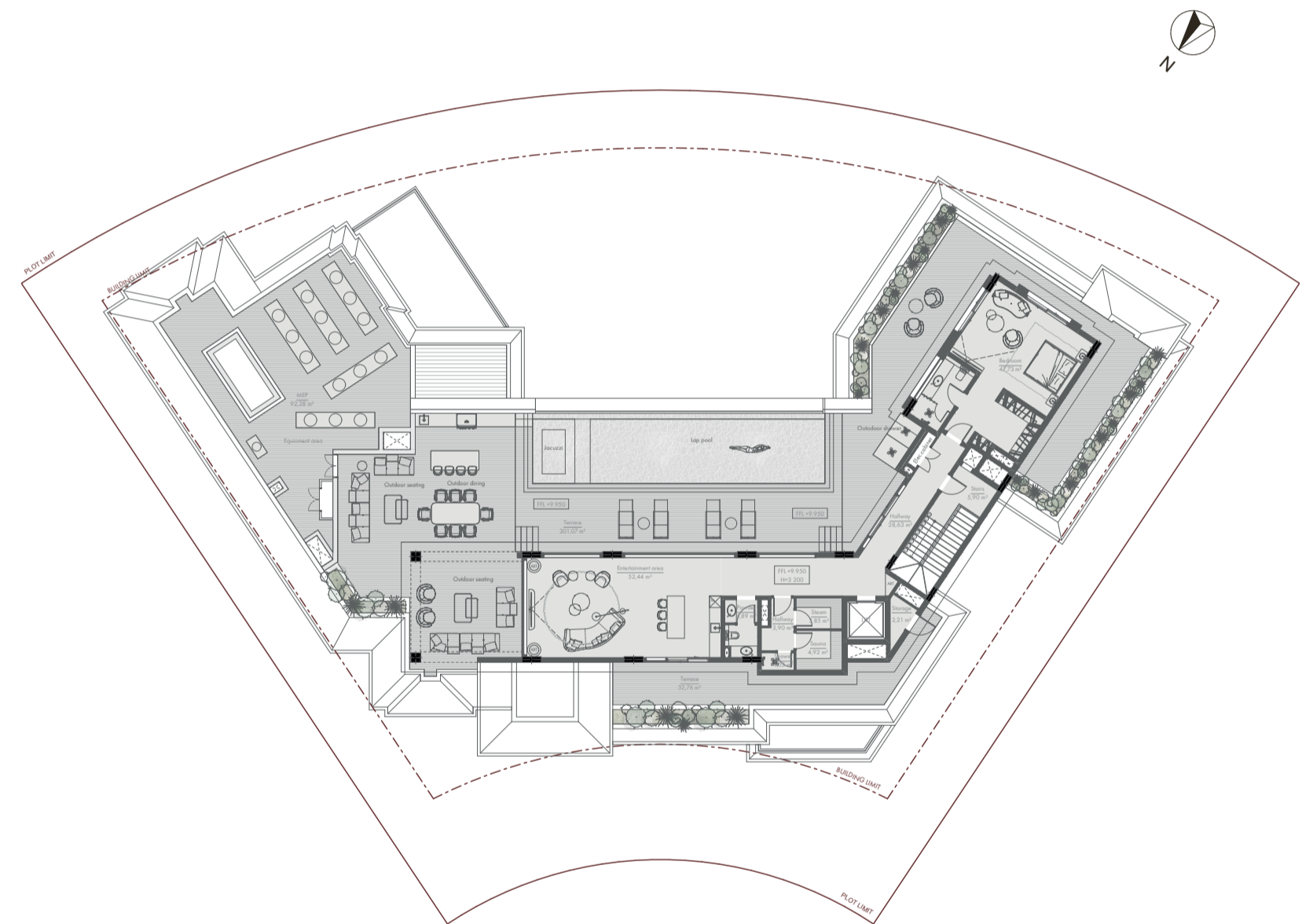


Site Plan



Ground floor (without improving the terrace, technical premises and parking): 489,48 m²
 Total area (without improving the terrace, technical premises and parking): 1 926,41 m²
 Total area of technical premises and parking: 325,79 m²
 Total area of terraces: 650,85 m².

FLOOR PLAN - MONACO 1
ROOFTOP



Site Plan



Ground floor (without improving the terrace, technical premises and parking): 156,00 m²
 Total area (without improving the terrace, technical premises and parking): 1 926,41 m²
 Total area of technical premises and parking: 325,79 m²
 Total area of terraces: 650,85 m².