

HABITAT

YOUR HOLISTIC HAVEN

Wellness ♦ Anti-Ageing ♦ Conventions

Welcome to Habitat, an extraordinary project that brings together a holistic wellness concept with an unparalleled range of activities plus exciting business opportunities.

One of the most remarkable aspects of Habitat is its unmatched array of facilities, carefully composed to satisfy all your necessities. Various shopping facilities ensure that you get everything you need for your daily essentials.

With a strong focus on both, physical and mental well-being, Habitat offers all around holistic health, from the rainbow concept restaurant with food from its own cultivation to the diverse sports and wellness possibilities to the health centre with anti-ageing offers and professional medical care.

Indulge in a diverse social life through a diverse range of activities. Unwind and socialize at the cinema or at the sports bar, Habitat offers a multitude of amenities for your perfect lifestyle.

Families will find solace in the dedicated kids play area, designed to provide a safe and enjoyable space for children to explore and play. Even our furry friends can revel in the park area, specially created for dogs to have their share of fun.

Discover a seamless business experience with a range of features and services tailored to different needs.

Experience the best of convenience, recreation, and family-friendly amenities at Habitat, where every aspect of your lifestyle has been carefully considered.



Project Overview

Total land area: 267.600 m²

Green area: 200.000 m²

Units: 1.407

Elevation:

Front of the project: 38m above sea level

Commercial zone: 44m above sea level

Middle of the project: 62m above sea level

Highest point: 90m above sea level



The visionary holistic concept combines modern life, wellness, activities and business

Discover all you need at the 11.000 m² Commercial area

Explore the Habitat Boulevard: 1.4 km landscaped road, surrounded by cascading waterfalls

Come across the Car road, bicycle road and jogging road, separated by trees (total length: 3.5 km)

Enjoy the unparalleled range of facilities

Facilities



Spa



Wellness



Sauna



Steam Room



Health Center



Anti Ageing
Center



Gym



Tennis Court



Bike Rental



Hiking Path



Pool



Aquapark



Yoga & Thai Chi
Lounges



Playground



Cinema



Restaurant



Bar



Bakery



Cafeteria



Pet Friendly



Shops



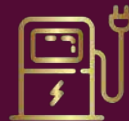
Supermarket



Pharmacy



Car Rental



Electric Car
Charging



Shuttle Service



Concierge Service



Onsite
Management



ATM



Laundry



Habitat Conventions

Your Gateway to Successful Meetings and Events

- Convenient and well-equipped meeting rooms
- Expertise in hosting seminars and workshops
- Tailored solutions to meet various business needs
- Unique onboarding experiences
- Attractive incentive packages
- Bookable packages for different budgets
- Communal areas for networking and socialising

Location



250 meters to the sea



Kyrenia: 37 mins
Famagusta: 39 mins
Lefkoşa: 45 mins
Iskele: 31 mins



Ercan Airport: 45 mins
Larnaca Airport: 1 hour
Paphos Airport: 2 hour 20 mins



Evergreen Office

Commercial

Facilities Center

Bungalows

D-Block

2 Bedroom Garden

2 Bedroom Garden Corner

3 Bedroom Penthouse Duplex

C-Block

2 Bedroom Garden Corner

3 Bedroom Penthouse Duplex

E-Block

1 Bedroom Garden

1 Bedroom Garden Corner

1 Bedroom Penthouse Duplex

2 Bedroom Penthouse Duplex

F-Block

Studio Garden

1 Bedroom Garden

1 Bedroom Penthouse Duplex

F-Block

Studio Garden

1 Bedroom Garden



43 m² covered area
6 m² terrace
49 m² total living space

67 m² covered area
12 m² terrace
9 m² total living space



F-Block

1 Bedroom Duplex Penthouse

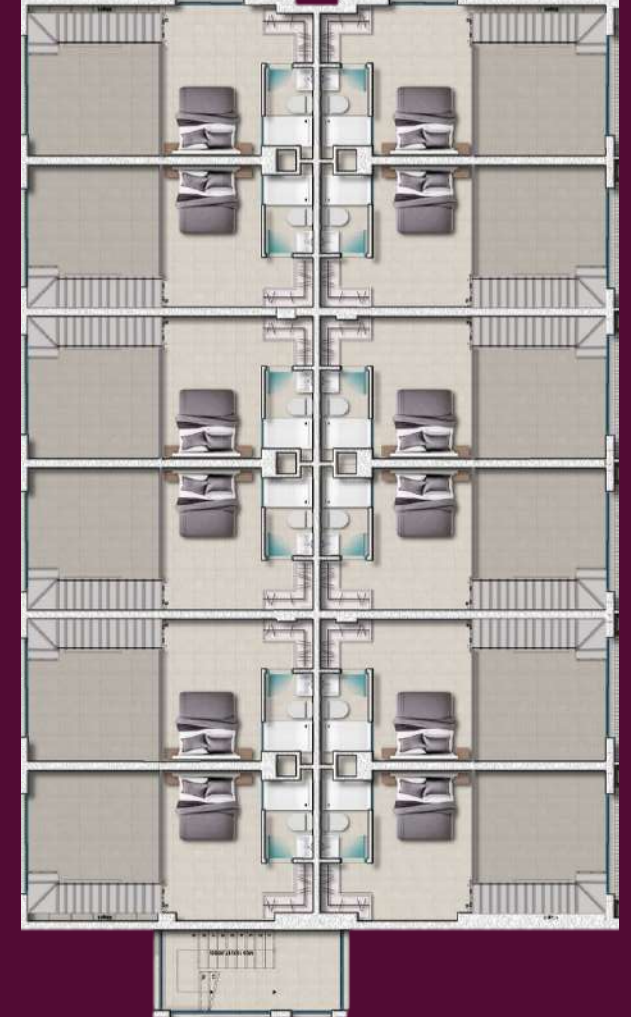


60 m² covered area | 6 m² balcony
36 m² roof terrace | 96 m² total living space

1+1 (First floor)



1+1 (Gallery floor)



E-Block

1 Bedroom Garden



50 m² covered area
10 m² terrace
60 m² total living space



All Pre-Planning Information provided in this document is subject to change and developer has the right to make any alterations / cancellations at the planning phase.

E-Block

1 Bedroom Duplex Penthouse



75 m² covered area | 8 m² balcony
36 m² roof terrace | 119 m² total living space

Gallery Floor



First Floor



C-Block

2 Bedroom Garden



82 m² covered area | 18 m² terrace
100 m² total living space

2+1 Groundfloor



All Pre-Planning Information provided in this document is subject to change and developer has the right to make any alterations / cancellations at the planning phase.

C-Block

3 Bedroom Duplex Penthouse



105 m² covered area | 15 m² balcony
65 m² roof terrace | 185 m²

3+1 (Second Floor)



3+1 (Gallery Floor)



All Pre-Planning Information provided in this document is subject to change and developer has the right to make any alterations / cancellations at the planning phase.

D-Block

3 Bedroom Duplex Penthouse



105 m² covered area | 15 m² balcony
65 m² roof terrace | 185 m²

3+1 First Floor



3+1 Gallery floor



Bungalows

3 Bedroom Bungalow



125 m² covered area | 50 m² garden terrace
120 m² roof terrace | 295 m² total living space

Bungalow Ground Floor



Bungalow Roof Terrace





Starting Prices

Studio Garden

£ 115.950

43 m² closed area | 6 m² terrace

49 m² total living space

1+1 Garden

£ 149.950

50 m² closed area | 10 m² terrace

60 m² total living space

1+1 Duplex Penthouse

£ 155.950

60 m² closed area | 6 m² balcony

36 m² roof terrace | 96 m² total living space

2+1 Garden

£ 250.950

82 m² closed area | 18 m² terrace

100 m² total living space



Starting Prices

2+1 Duplex Penthouse

£ 259.950

100 m² closed area | 8 m² terrace

36 m² roof terrace | 144 m² total living space

3+1 Duplex Penthouse

£ 315.950

105 m² closed area | 15 m² balcony

65 m² roof terrace | 185 m² total living space

3+1 Bungalow

£ 515.950

125 m² covered area | 50 m² garden terrace

120 m² roof terrace | 295 m² total living space



Habitat Payment Plan



THE BUYING PROCESS

1. Reserve your property for only £2,000 / £5,000
2. Sign power of attorney with a lawyer and share information about your purchase
3. Contract signing
4. Flexible payment plan



HABITAT

YOUR HOLISTIC HAVEN

Wellness ♦ Anti-Ageing ♦ Conventions