

# || GÜZEL TOWERS

Floor Plans



Güzel Towers, an architectural marvel by Tiger Properties, features twin high-rise towers connected by a stunning central swimming pool. Located in the heart of Jumeirah Village Triangle, this luxurious development combines modern sophistication with serene design, offering residents unparalleled amenities and a lifestyle of elegance.

Floor Plan A  
**1<sup>st</sup> Floor**

- Studio
- One Bedroom



Marina & Emirates Hills



Mhd Bin Zayed Rd  
& Al Furjan

JVT &  
JVC

Tower A

Tower B

Mhd Bin Zayed Rd

Floor Plan A

# 2<sup>nd</sup> to 5<sup>th</sup> Floor

- Studio
- One Bedroom
- Two Bedroom



Floor Plan A

# 6<sup>th</sup> to 13<sup>th</sup>, 15<sup>th</sup> to 26<sup>th</sup> Floor

- Studio
- One Bedroom
- Two Bedroom



Floor Plan B

# 6<sup>th</sup> to 13<sup>th</sup>, 15<sup>th</sup> to 26<sup>th</sup> Floor

- Studio
- One Bedroom
- Two Bedroom



Block A  
**1 Bedroom**

Apartment 1

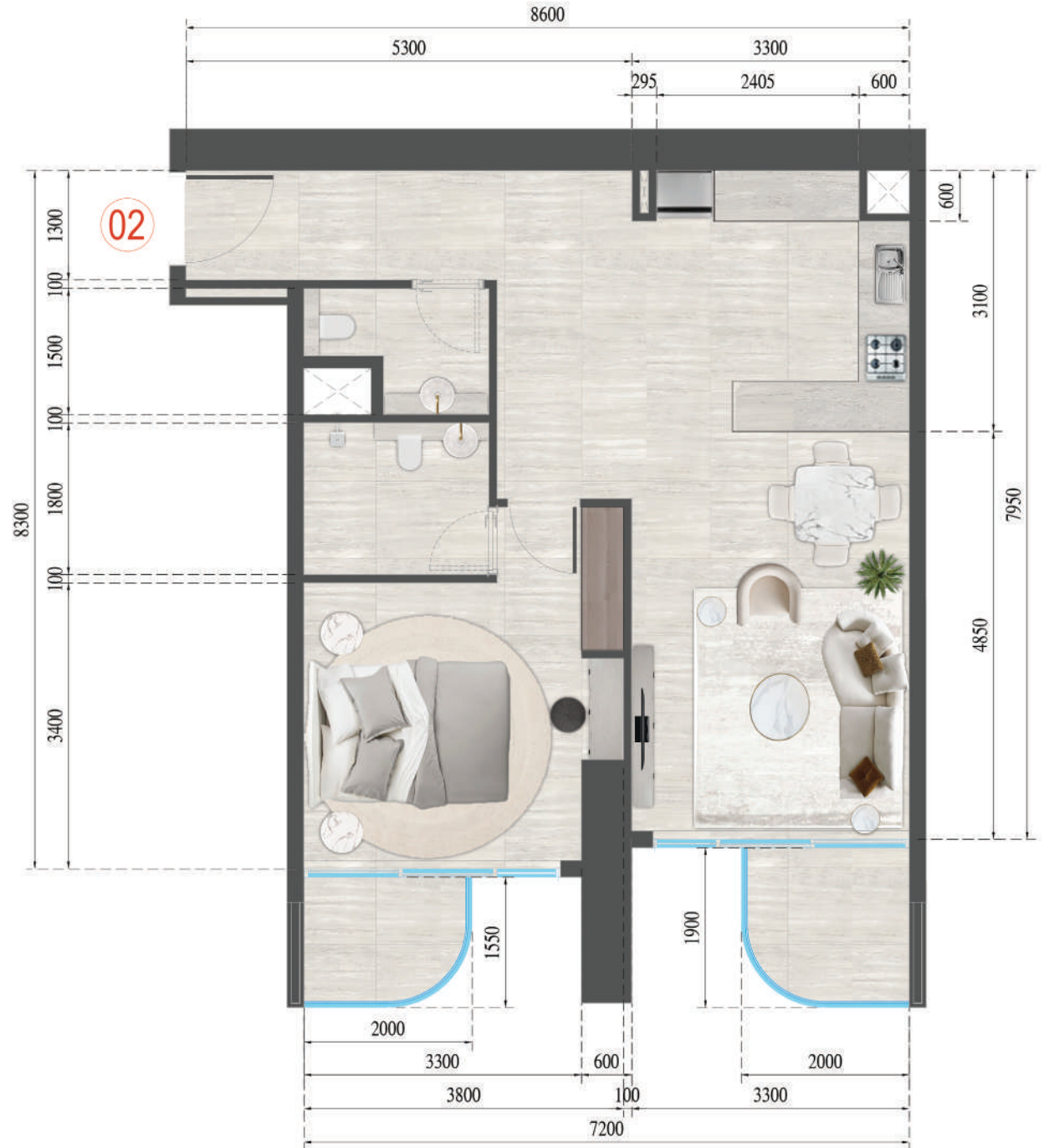
Floor No:  
**1-5, 6-13, 15-26**



Block A  
**1 Bedroom**

Apartment 2

Floor No:  
**1-5, 6-13, 15-26**



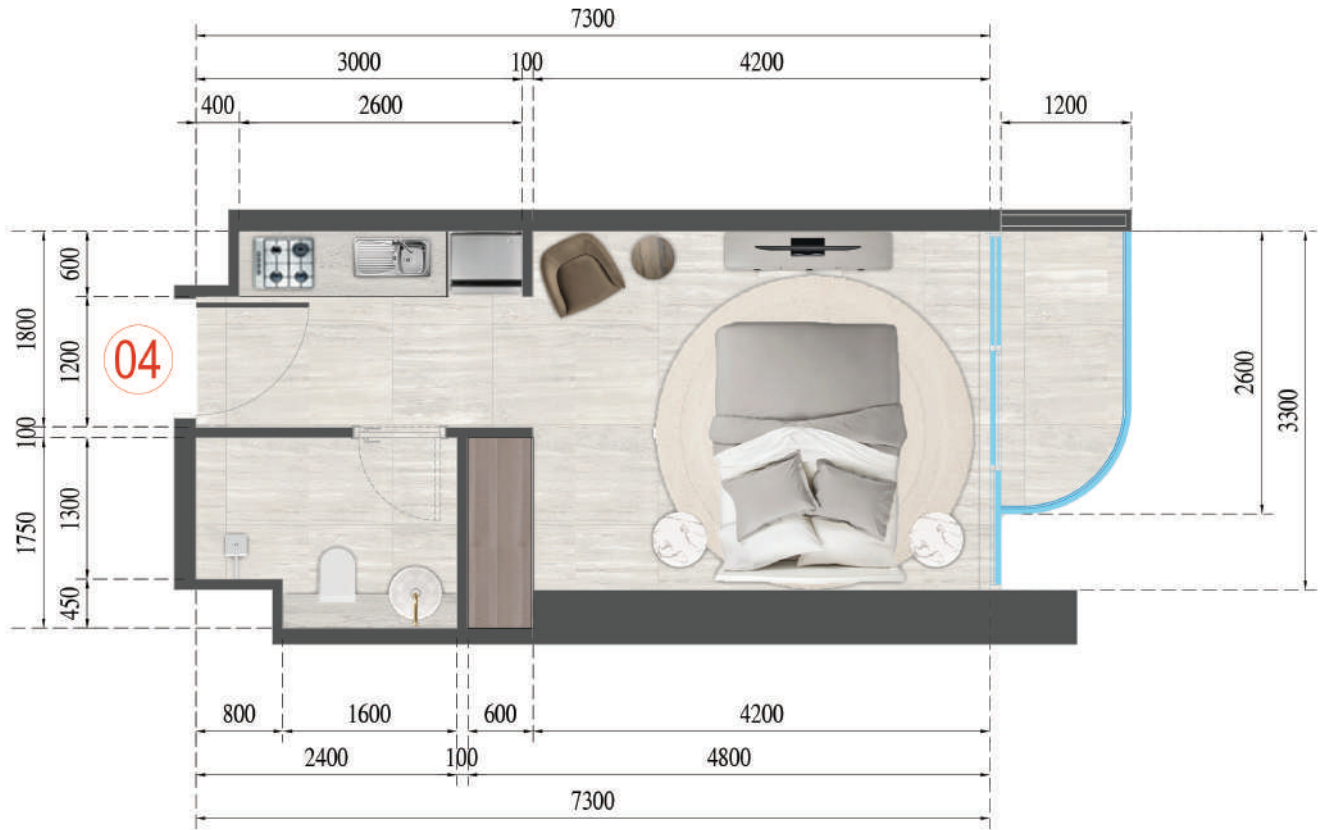




Block A  
**Studio**

Apartment 4

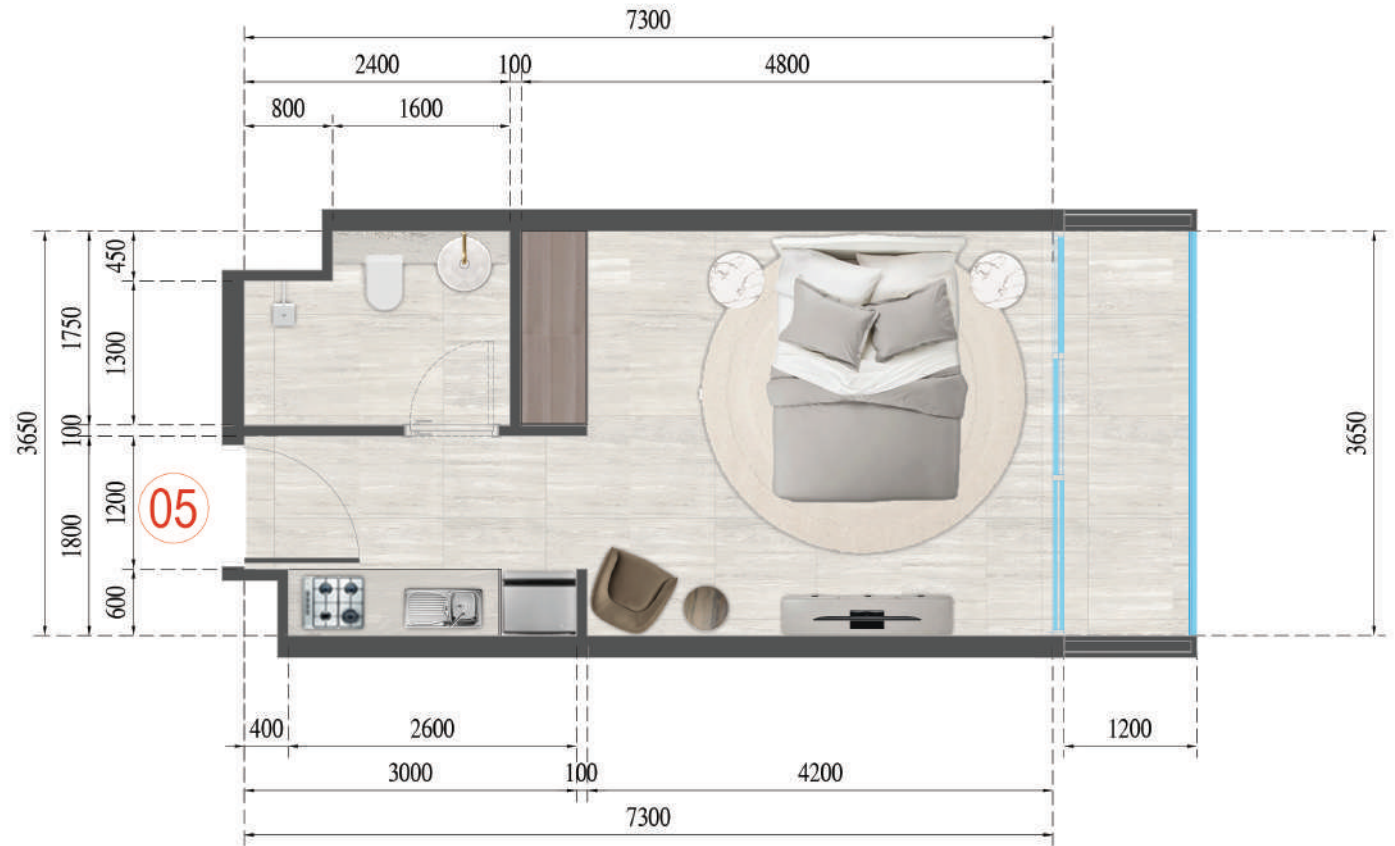
Floor No:  
**1-5, 6-13, 15-26**



Block A  
**Studio**

Apartment 5

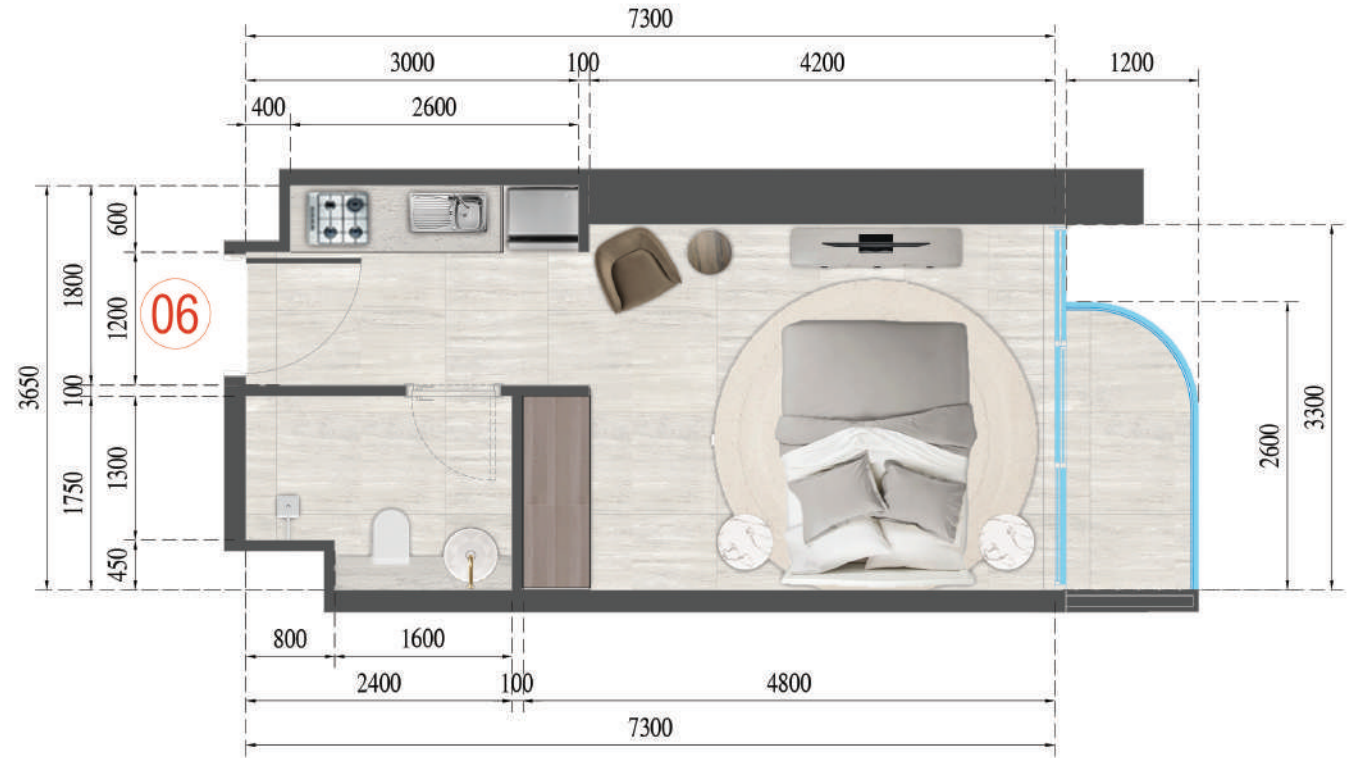
Floor No:  
**1-5, 6-13, 15-26**



Block A  
**Studio**

Apartment 6

Floor No:  
**1-5, 6-13, 15-26**



Block A  
**Studio**

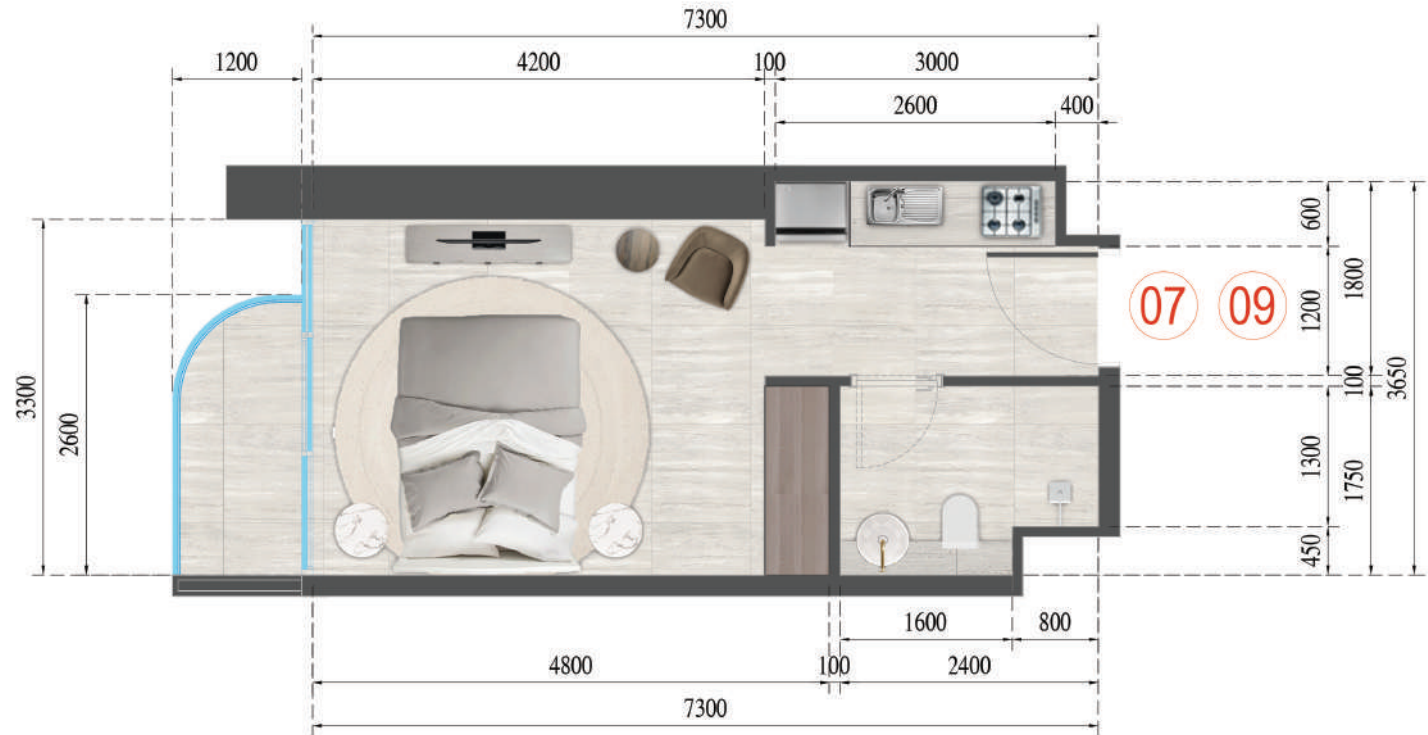
Apartment 7

Floor No:  
**1**

Block A  
**Studio**

Apartment 9

Floor No:  
**2-5, 6-13, 15-26**





Block A  
**Studio**

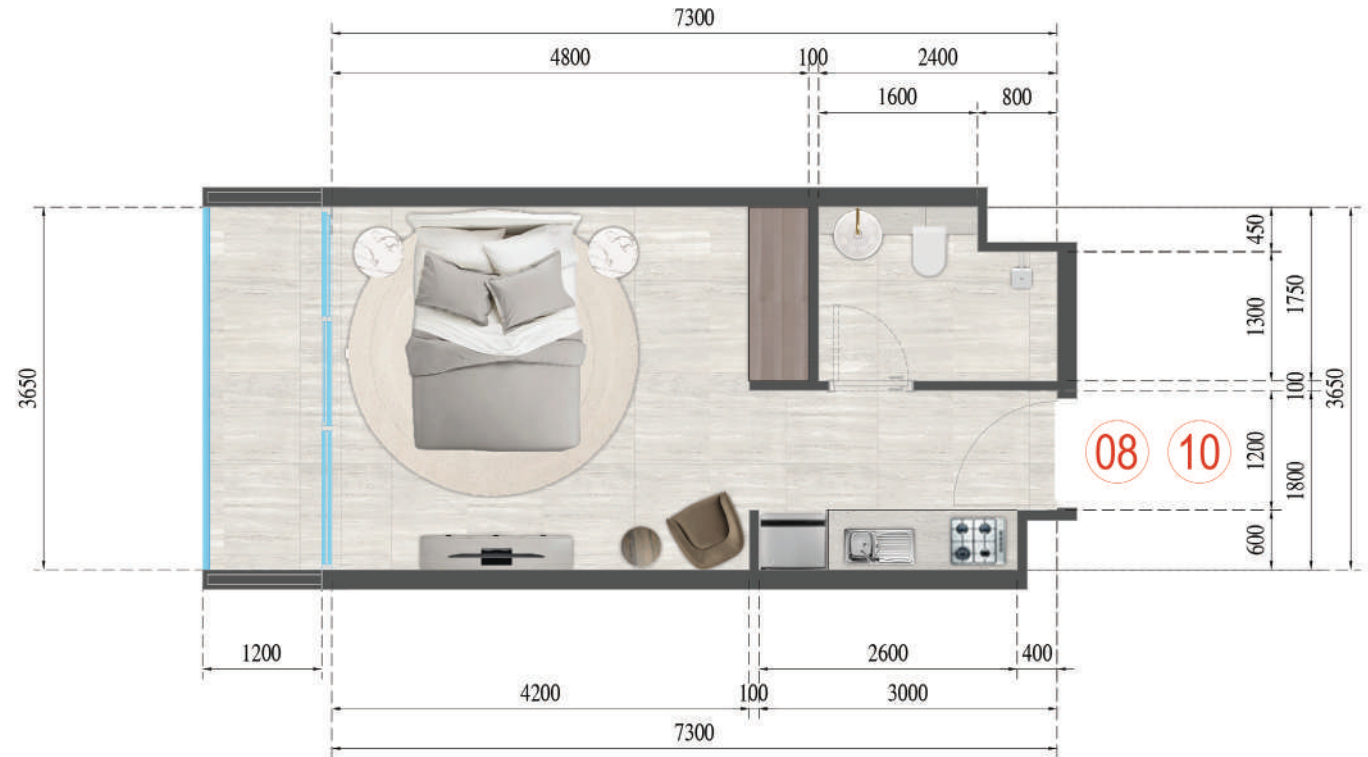
Apartment 8

Floor No:  
**1**

Block A  
**Studio**

Apartment 10

Floor No:  
**2-5, 6-13, 15-26**



Block A  
**2 Bedroom**

Apartment 8

Floor No:  
**2-5, 6-13, 15-26**





Block A  
**Studio**

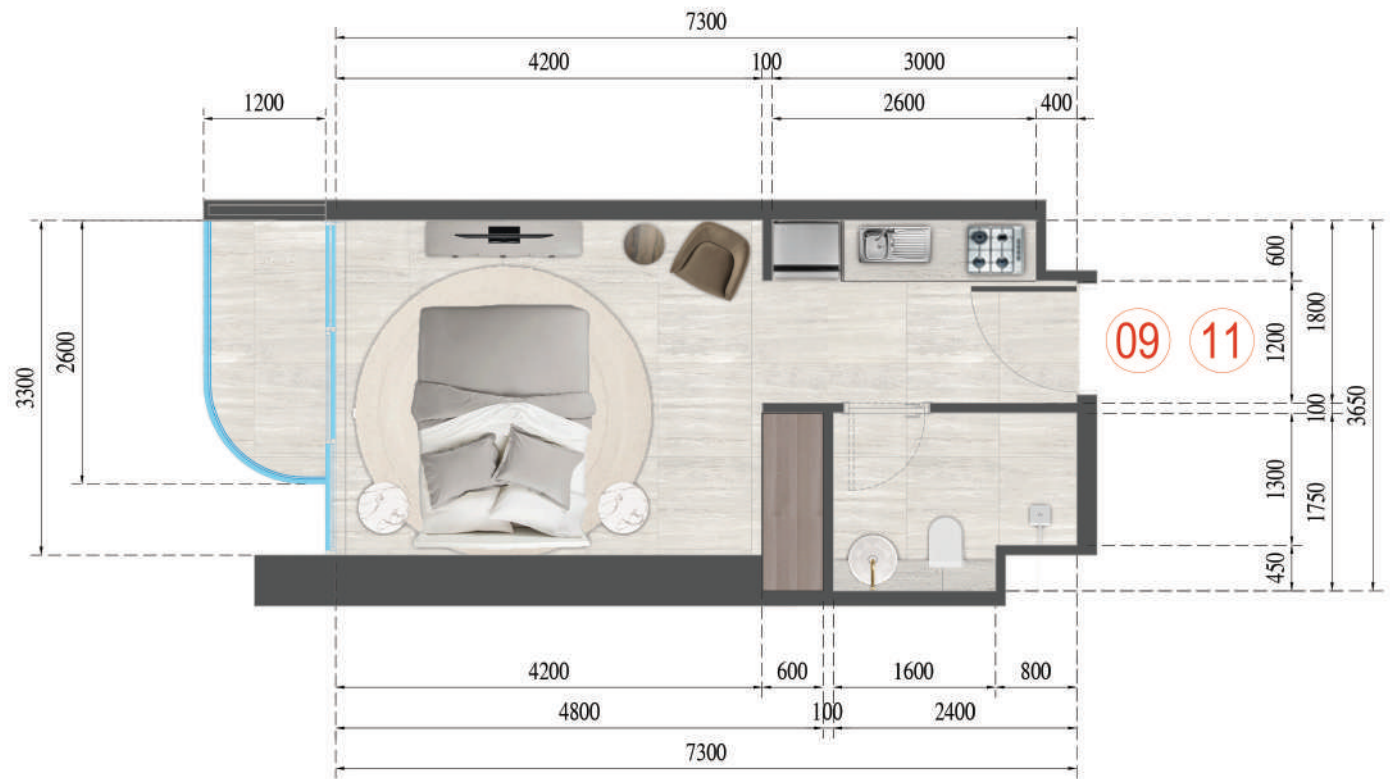
Apartment 9

Floor No:  
**1**

Block A  
**Studio**

Apartment 11

Floor No:  
**2-5, 6-13, 15-26**



Block B  
**1 Bedroom**

Apartment 1

Floor No:  
**6-13, 15-26**



Block B  
**1 Bedroom**

Apartment 2

Floor No:  
**6-13, 15-26**



Block B  
**1 Bedroom**

Apartment 3

Floor No:  
**6-13, 15-26**

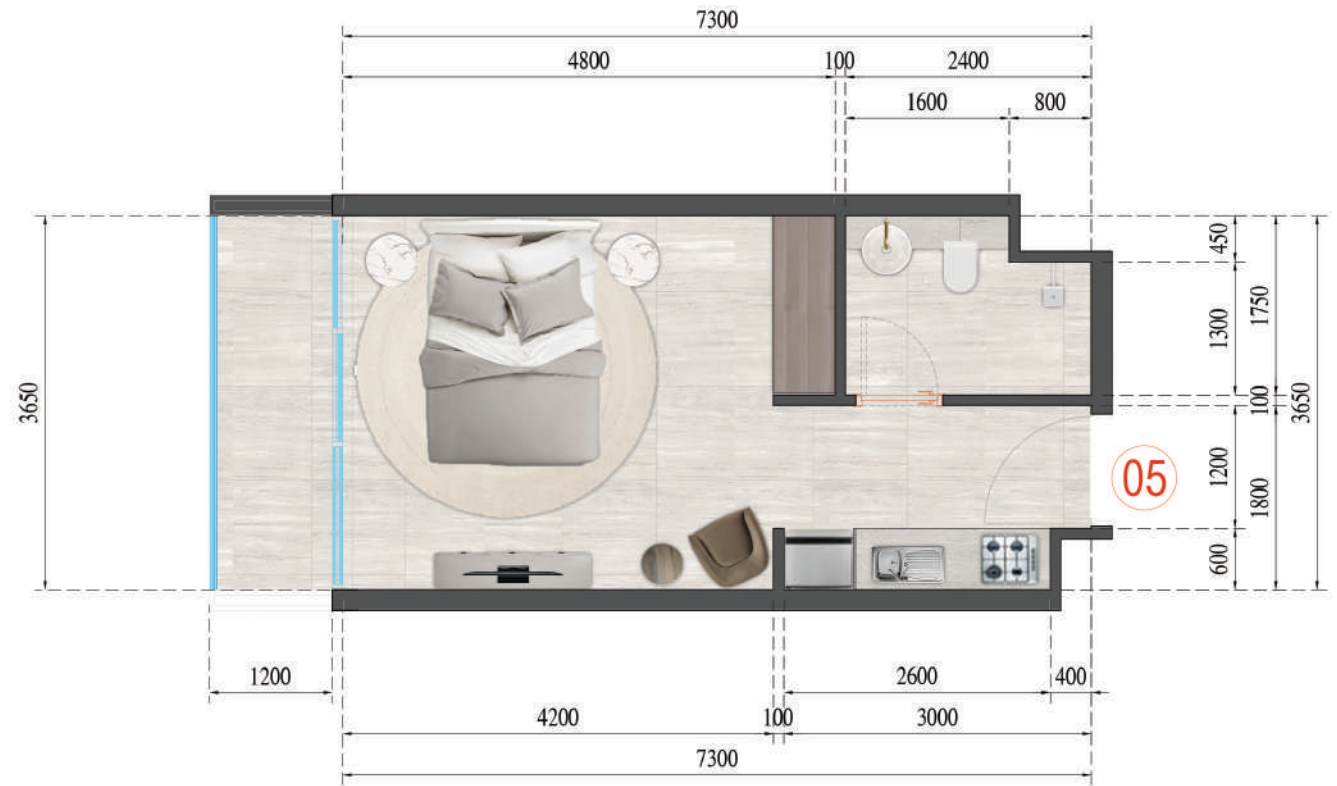




Block B  
**Studio**

Apartment 5

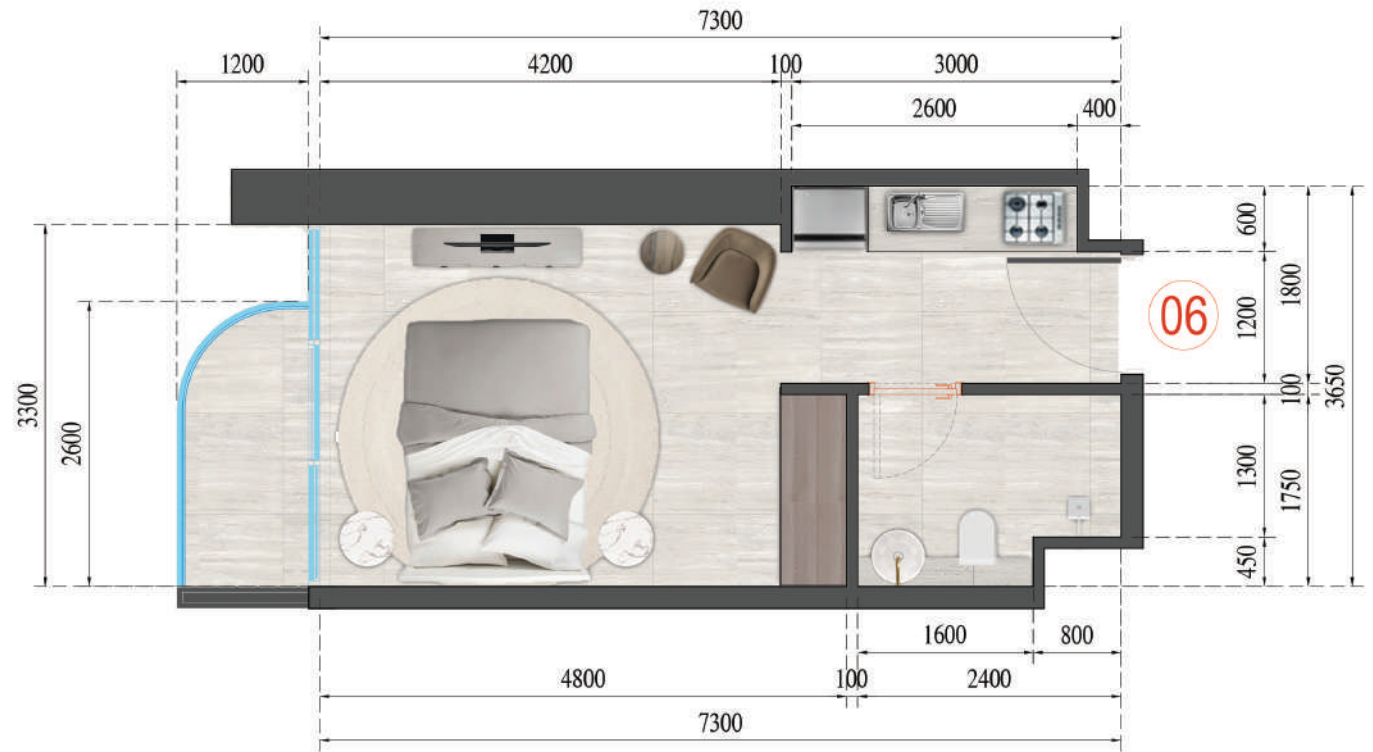
Floor No:  
**6-13, 15-26**



Block B  
**Studio**

Apartment 6

Floor No:  
**6-13, 15-26**



Block B  
**2 Bedroom**

Apartment 7

Floor No:  
**6-13, 15-26**





Block B  
**2 Bedroom**

Apartment 8

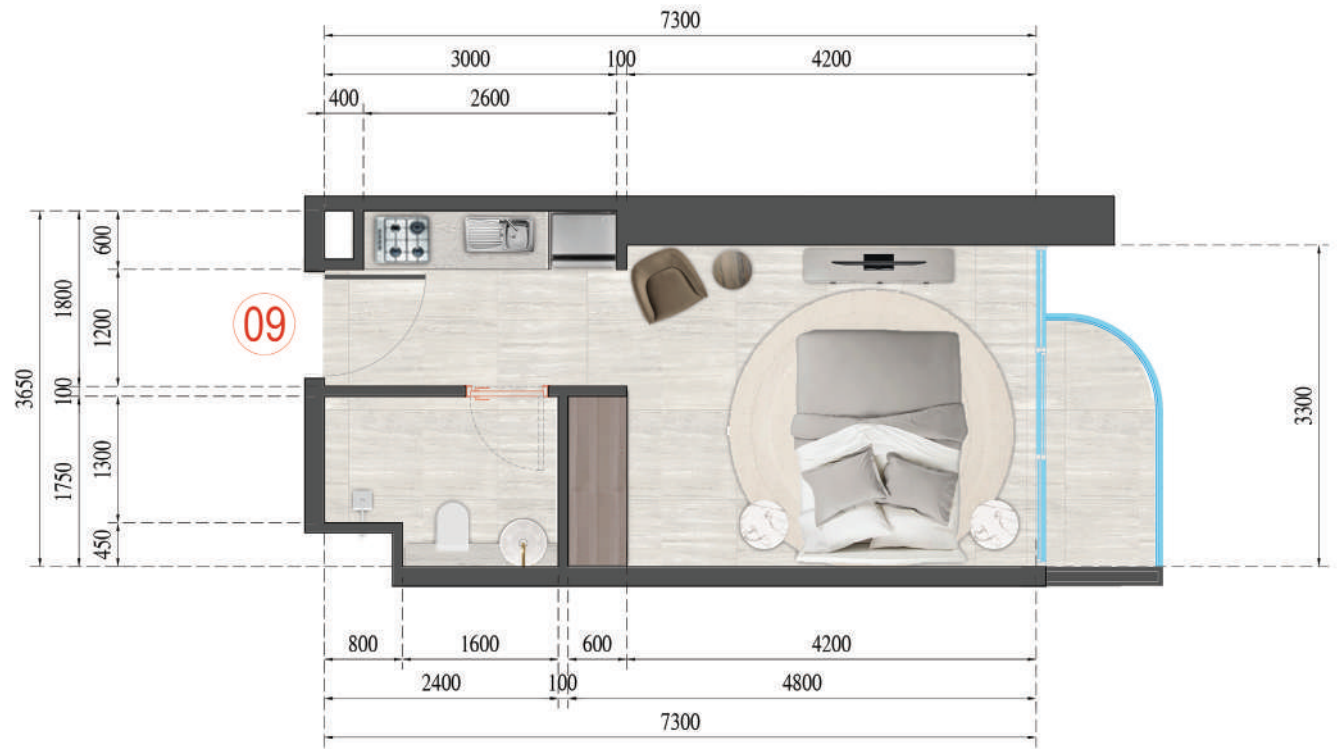
Floor No:  
**6-13, 15-26**



Block B  
**Studio**

Apartment 9

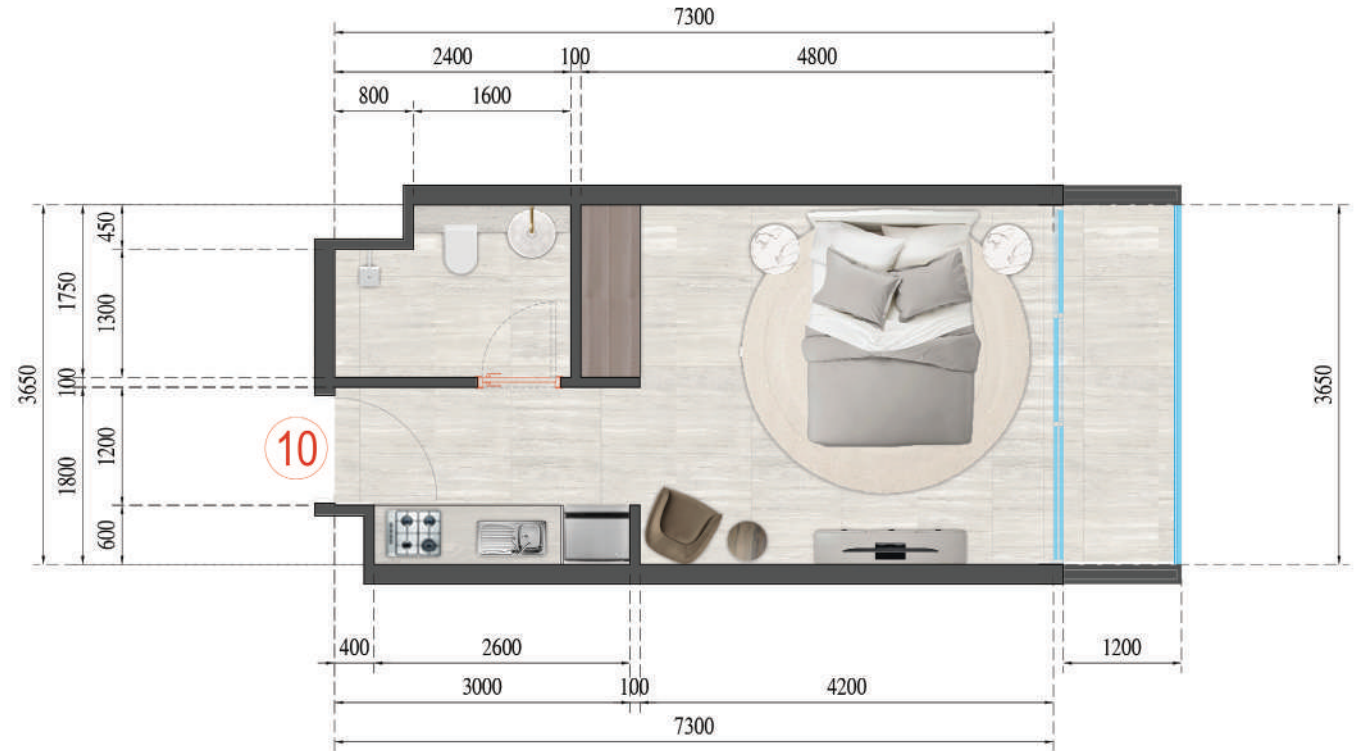
Floor No:  
**6-13, 15-26**



Block B  
**Studio**

Apartment 10

Floor No:  
**6-13, 15-26**



Block B  
**Studio**

Apartment 11

Floor No:  
**6-13, 15-26**

