

*DAMAC*



  
**SAFA GATE**  
SHEIKH ZAYED ROAD

URBAN VERVE  
MEETS NATURAL  
SERENITY





THE

HIGHPOINT

OF

PANORAMIC

LIVING



# YOUR GATEWAY TO THE SHEIKH ZAYED ROAD PLATINUM DISTRICT

SAFA GATE redefines the essence of the Platinum District's opulent living experience. It is your key to unlocking the best of Dubai's vibrant urban spirit. Step into a world where convenience meets sophistication, and make your mark in one of the most coveted address in the region.

RISE ABOVE THE CITY  
AND EXPERIENCE  
LUXURY THAT MAKES  
YOUR SPIRIT SOAR



SAFA GATE  
SHEIKH ZAYED ROAD



# YOUR TOWERING URBAN OASIS AWAITS

SAFA GATE stands as a landmark of architectural ingenuity and luxury living. Its sleek, soaring silhouette pierces the Dubai skyline, featuring a stunning glass façade that reflects the city's vibrant energy. The tower's distinctive design incorporates bold design elements, creating a visual masterpiece that is as functional

as it is beautiful. With its innovative sky gardens and panoramic viewing decks, SAFA GATE blurs the line between indoor and outdoor living, offering residents unparalleled views and a sense of floating above the bustling metropolis.



RESIDE IN THE  
HEART OF THE CITY

**SAFA GATE**  
SHEIKH ZAYED ROAD



  
**7 MINS**  
BURJ KHALIFA

  
**9 MINS**  
DUBAI INTERNATIONAL  
FINANCIAL CENTRE

  
**10 MINS**  
THE STABLES DUBAI, MEYDAN

  
**12 MINS**  
MGM RESORT ISLAND

  
**14 MINS**  
DUBAI INTERNATIONAL AIRPORT

  
**14 MINS**  
DUBAI HARBOUR

  
**14 MINS**  
DUBAI CREEK GOLF  
& YACHT CLUB

  
**16 MINS**  
PALM JUMEIRAH

  
**35 MINS**  
JETEX VIP TERMINAL

  
EXPO 2020 VENUE

  
DUBAI  
INVESTMENT  
PARK

  
DAMAC  
LAGOONS

DAMAC  
HILLS

  
DAMAC  
HILLS





# A MESMERISING GALLERY OF MATCHLESS CITYSCAPES

Enjoy a never seen before perspective of Dubai's stunning natural landscape. Discover a world of natural wonder from the emerald expanse of Safa park flora to the tranquil embrace of the Jumeirah seascape. Every day

offers a new masterpiece painted across the infinite sky right outside your window. Not to mention the views of Dubai icons, such Dubai Canal, Burj Al Arab and Burj Khalifa across Sheikh Zayed Road.



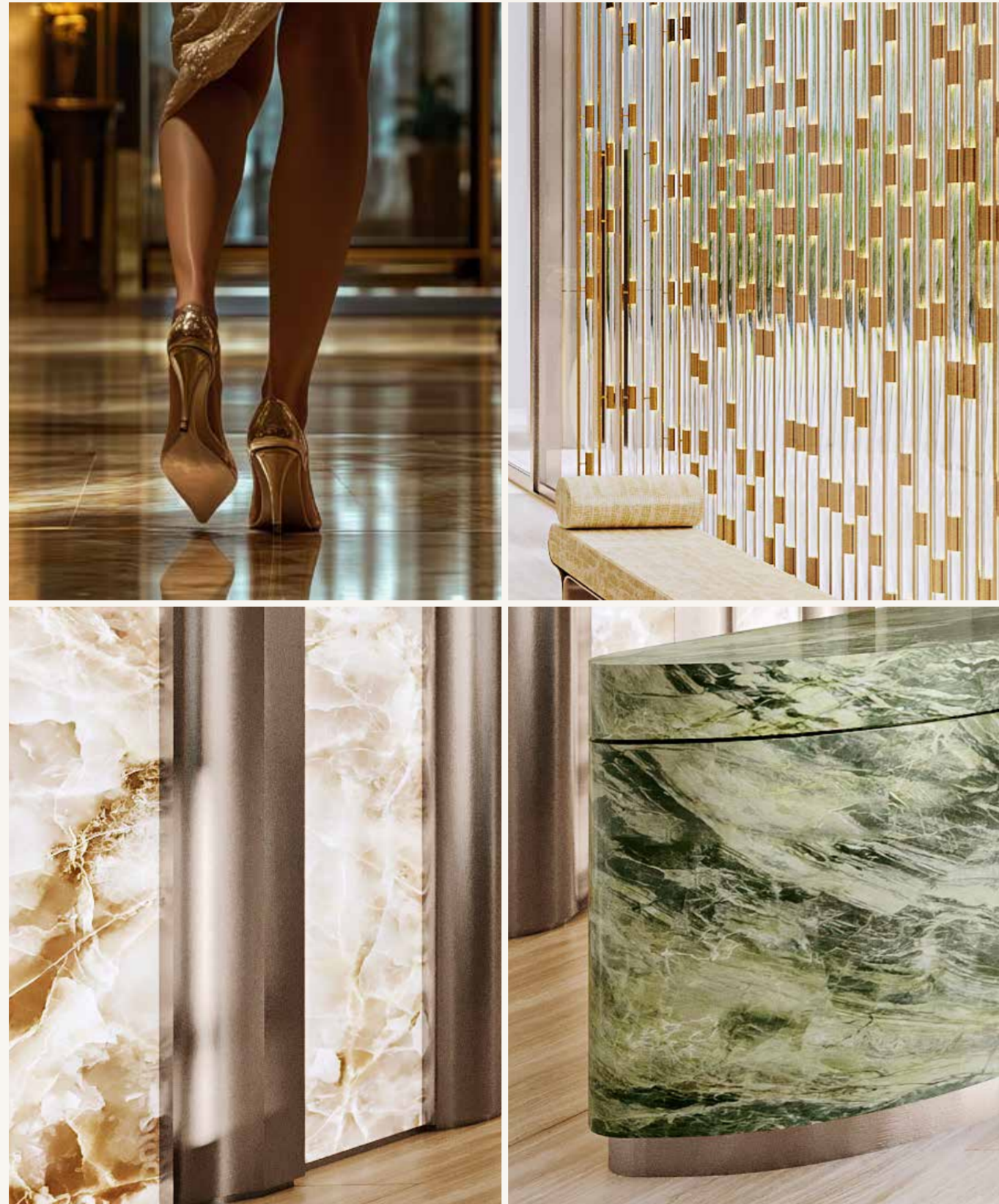


# THE EPICENTRE OF EFFORTLESS LIVING

Nestled along Sheikh Zayed Road, Safa Gate emerges as a sophisticated urban sanctuary seamlessly blending metropolitan energy with serene living. Strategically positioned beside the lush Safa Park and the Dubai Canal, this location offers residents an extraordinary lifestyle anchored by proximity to Dubai's most coveted destinations - from the vibrant City Walk and sophisticated Jumeirah to the iconic Dubai Mall and cultural Al Wasl Road.

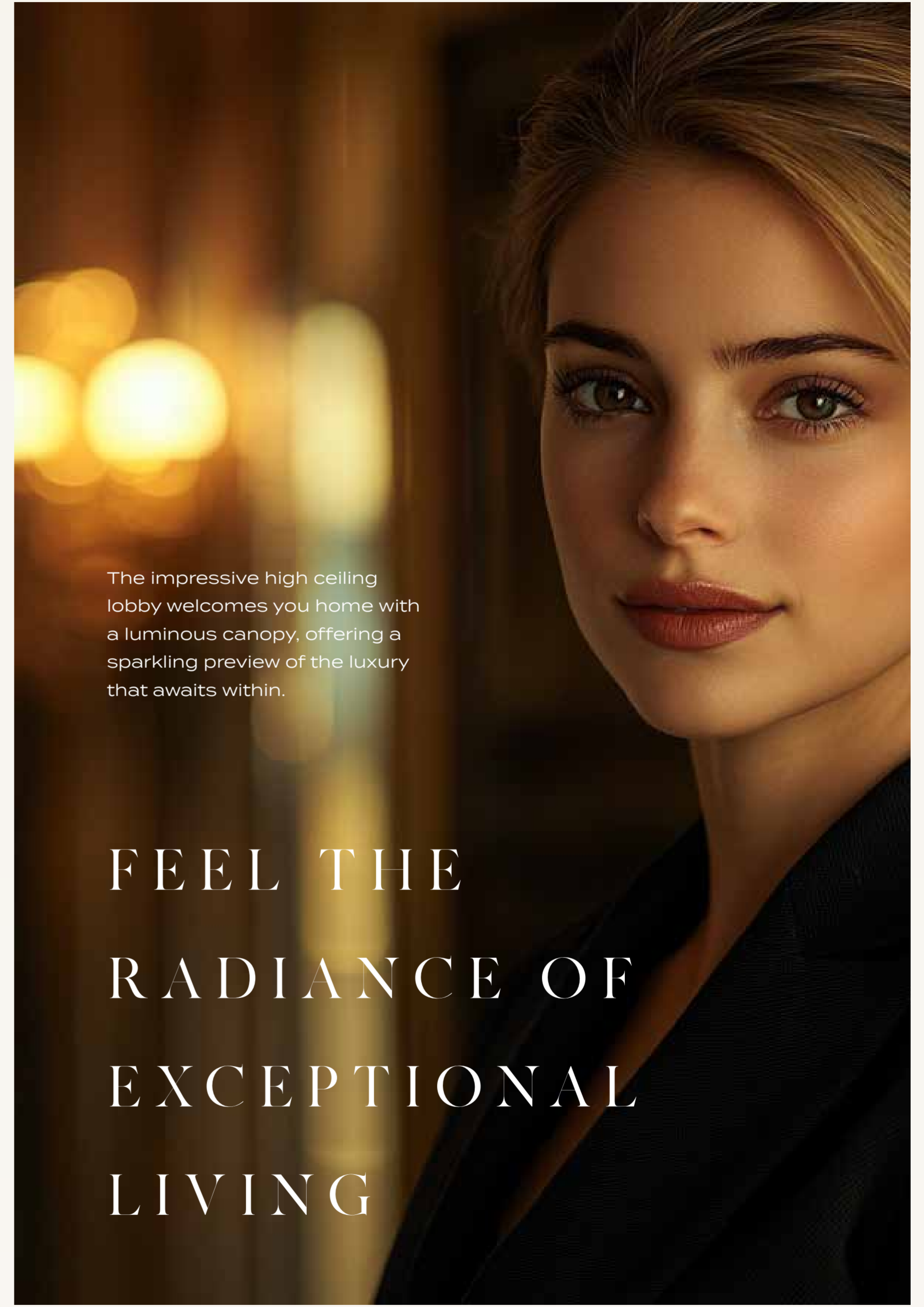


# KINETIC GEOMETRY



Witness an architectural narrative that breathes and transforms. Safa Gate's design language explores dynamic interactions between solid and void, and a play of light and shadows to create a living structure that adapts and responds to its urban environment with remarkable sophistication and visual complexity. The design orchestrates an intricate dialogue between fluid form, material innovation, and human-centric spatial experiences.



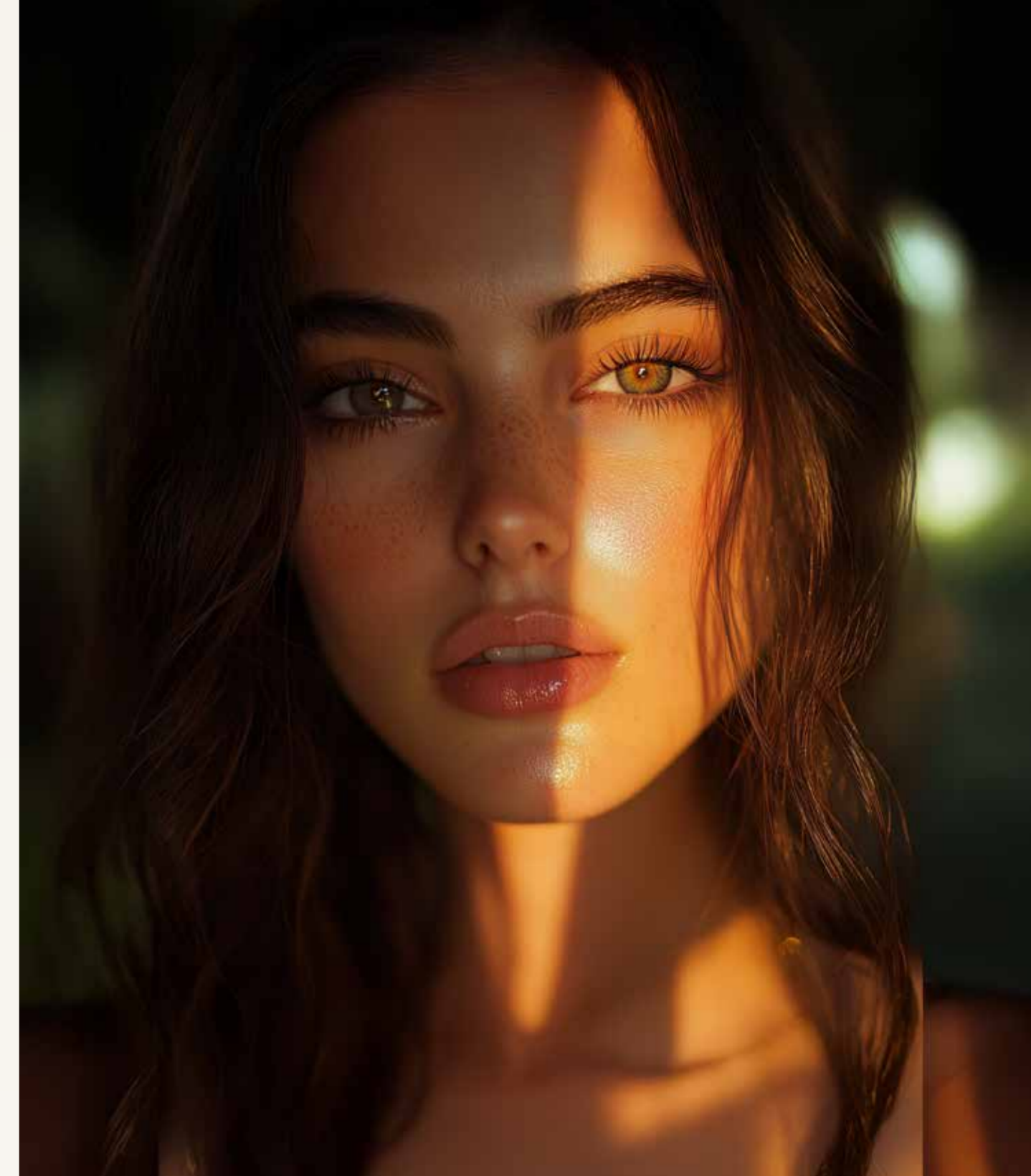


The impressive high ceiling lobby welcomes you home with a luminous canopy, offering a sparkling preview of the luxury that awaits within.

FEEL THE  
RADIANCE OF  
EXCEPTIONAL  
LIVING

# A CONNOISSEUR'S HAVEN

S A F A G A T T E



Perched above the city, a private cigar lounge where you can pair your rare vintages with your cigar collection in an atmosphere of timeless sophistication. With intimate gathering spaces framed by panoramic views, this exclusive retreat transforms evening rituals into extraordinary moments.





# KALIEDOSCOPIC WONDERLAND



Watch the Aurora Pool transform before your eyes, as vibrant hues dance and shimmer across the water, creating a mesmerising spectacle.

# SINK INTO BLISS

Gather your friends and family for a memorable experience. Our circular sunken pool seating offers a unique and intimate space to unwind and socialize.







Experience the future of fitness in the Gravity Gym. Discover a new level of challenge and motivation in a state-of-the-art zone, inspired by the forces of gravity and celestial motion.

# OUT OF THIS WORLD FITNESS

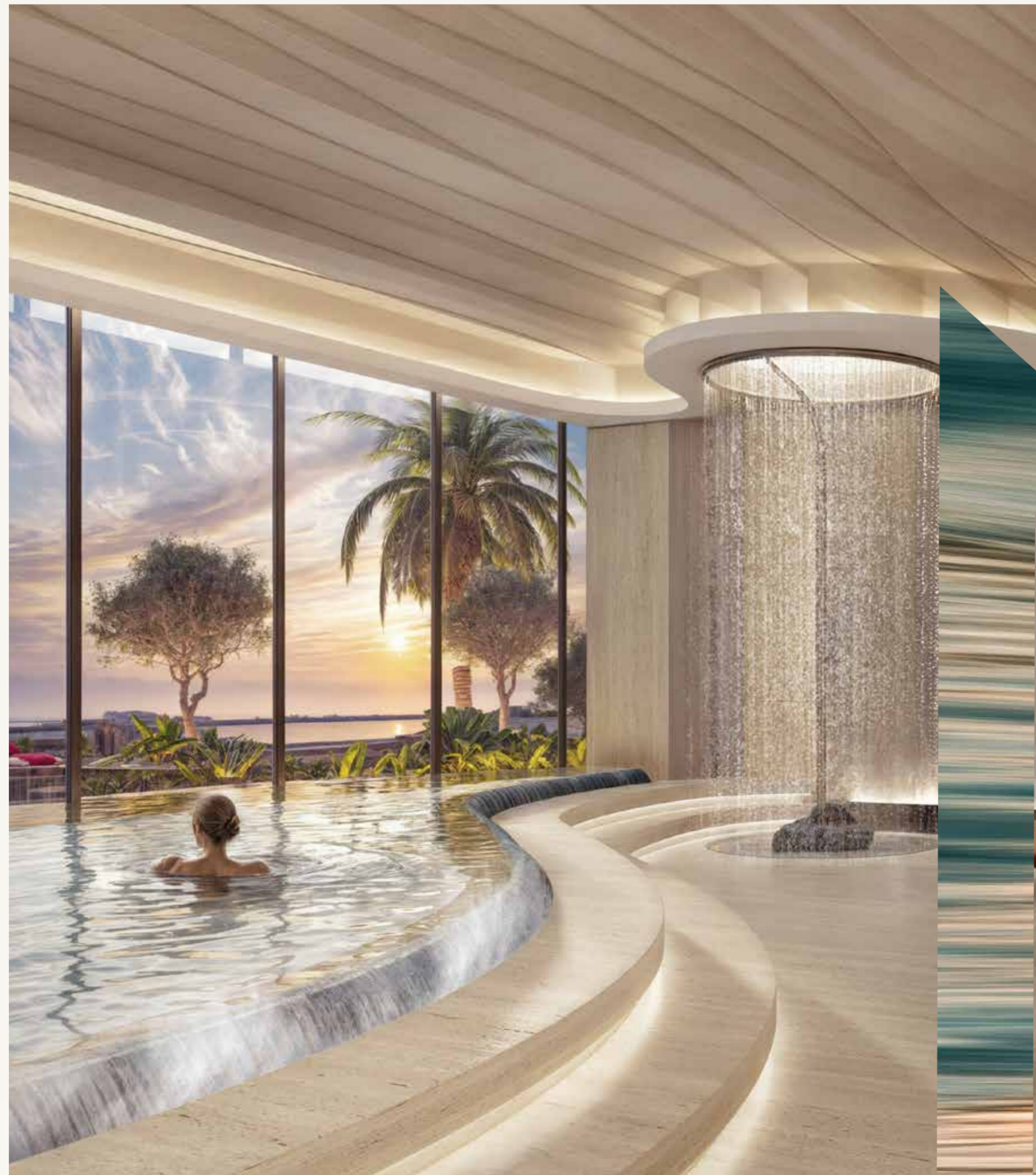




D A M A C S A F A G A T E

# ESCAPE TO BLISSFUL REJUVINATION

Enter the Lumière Spa, where golden light therapy and pristine hydrotherapy pools create an oasis of renewal. Our meditation dome, infused with choreographed light sequences and surrounded by living gardens, transforms wellness into an art. Here, ancient healing meets modern luxury, offering a sanctuary of radiant rejuvenation above the city.



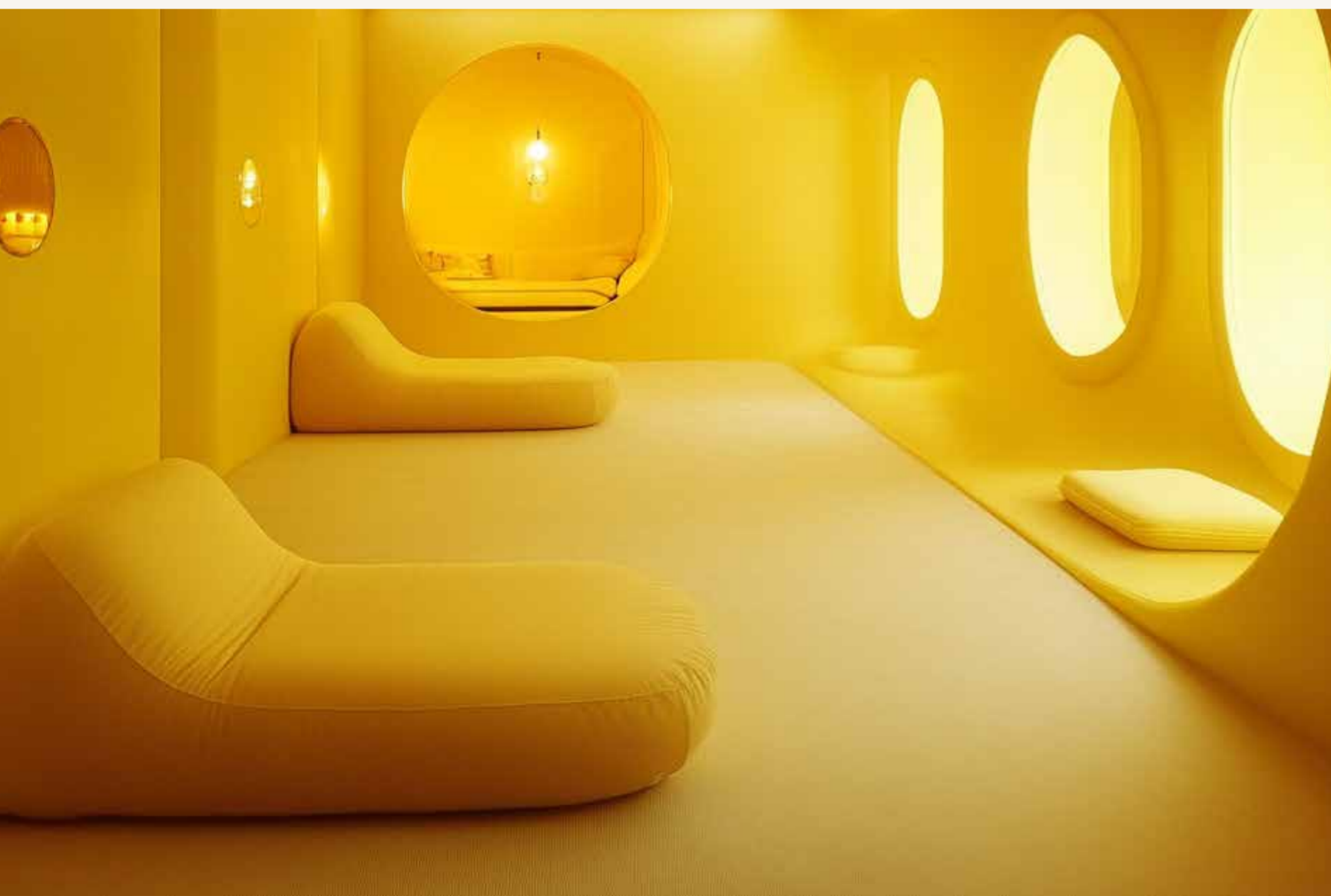


# WORK MEETS WELLNESS

Experience the benefits of ergonomic furniture, tech integration, and natural elements in the Co-working Pods. Escape the noise and distractions to focus and recharge in a collaborative environment.



# THE LIGHT RETREAT



Step into a space where light becomes therapy. Our pioneering chamber harnesses chromotherapy technology to create an immersive haven of healing radiance. As gentle waves of light wash over you, feel the day's tensions dissolve in this groundbreaking fusion of wellness and innovation.



# COSMIC CURTAIN CALL



Enjoy screenings and performances at the exclusive Eclipse Theatre, featuring a stunning ceiling designed to mimic the celestial phenomenon of a solar and lunar eclipse.

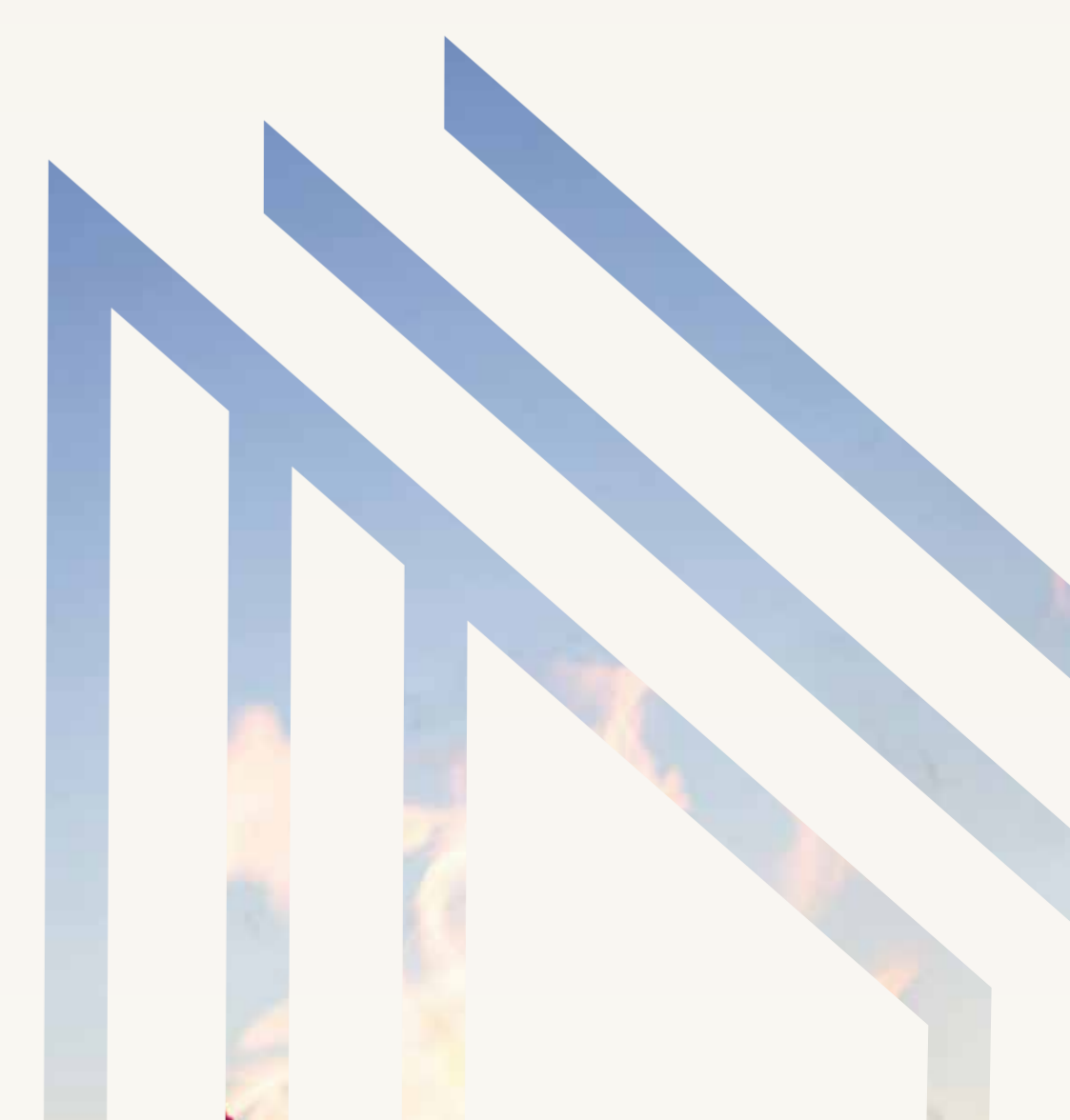
# WORKOUTS WITH A VIEW

Break free from conventional fitness spaces. Our open-air gym on Level 5, transcends traditional workout environments, inviting you to challenge your body while your eyes feast on Dubai's breathtaking cityscape



# ENJOY AN ELEVATED RENDEZVOUS

Botanical artistry meets Dubai's golden hour, our rooftop sanctuary elevates the art of evening leisure. Nestled among curated gardens, this exclusive belvedere offers masterfully crafted drinks against a canvas of Dubai's most captivating sunsets. As day transforms to dusk, watch the city ignite while surrounded by the serenity of elevated gardens and the sophistication of artisanal mixology.





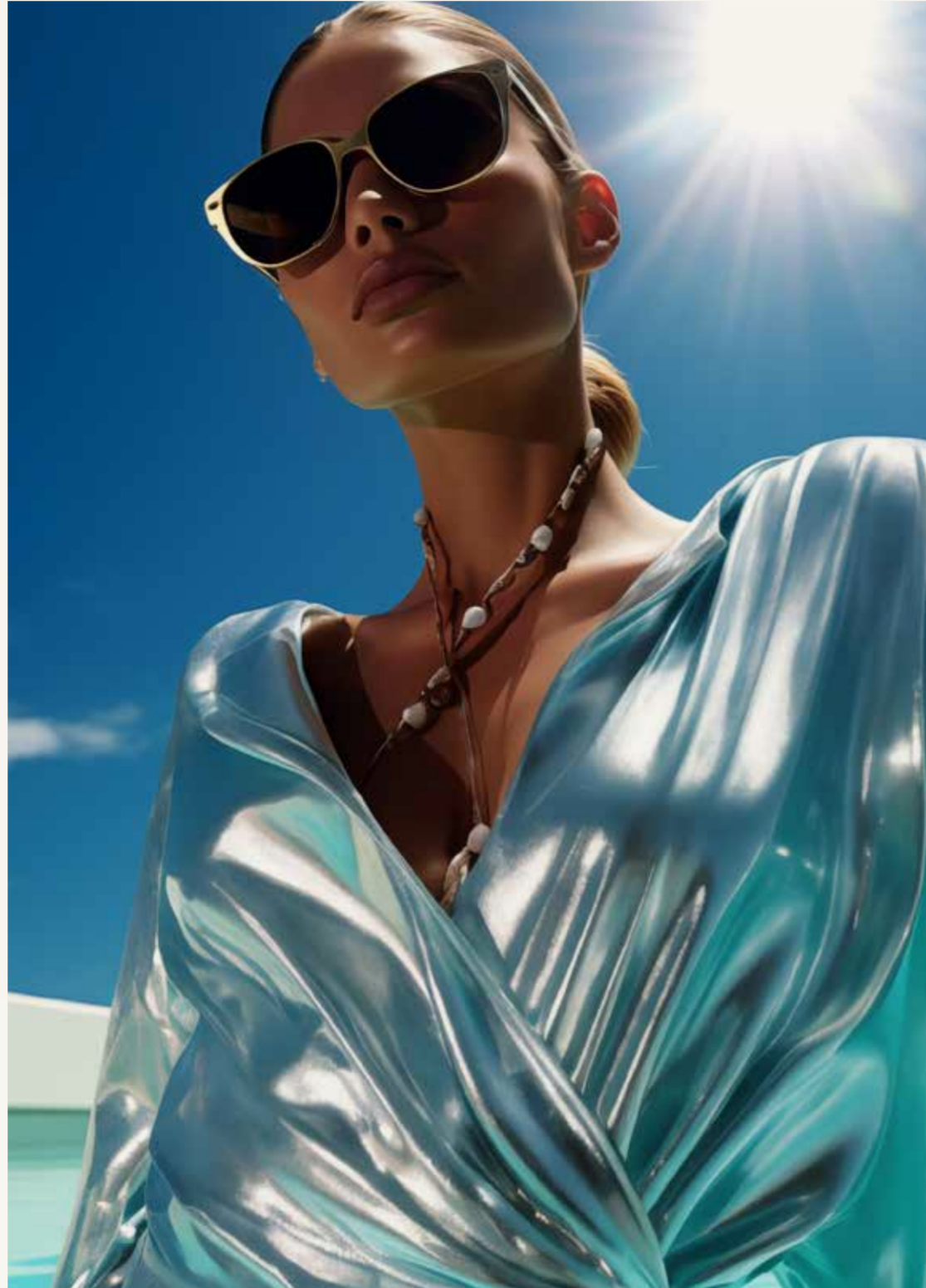
# SUNDANCE IN THE SKY

Ascend to a celestial perch, where Dubai unfolds beneath you in a breathtaking 360-degree panorama. Designed to echo the fiery dance of solar flares, this observation deck offers an unparalleled vantage point, a stage where the city's vibrant tapestry meets the vast canvas of the sky.



# YOUR AERIAL WELLNESS RETREAT

Escape the city's clamour and immerse yourself in tranquility. Our retreat pool, a sanctuary of serenity, invites you to unwind amidst a symphony of soothing water and the gentle embrace of native flora. Here, amidst the verdant tapestry and the murmur of flowing water, find your center and rediscover the art of peaceful repose.



RELAXATION MEETS  
INSPIRATION

SARAF GATE



Immerse yourself in serenity, where the tranquil embrace of our Zen plunge pool meets the breathtaking panorama of Dubai. Here, amidst the soothing murmur of water and the stunning cityscape, find a sanctuary for both productivity and profound relaxation. Let the tranquil environment inspire your thoughts and renew your spirit, offering a unique escape from the everyday.



THERE IS NO SOLITUDE IN THE WORLD  
LIKE THAT OF THE BIG CITY

— KATHLEEN NORRIS



# SKY MEETS SERENITY

Step into a world of unparalleled luxury where expansive living spaces meet breathtaking panoramas. Sunlight streams through floor-to-ceiling windows, illuminating the grand living room which features a sweeping duplex staircase that ascends to a private sanctuary above.







Indulge in the ultimate sanctuary within your private haven. The master bedroom, a symphony of opulence, promises a serene ambiance where each facet whispers classy luxury. Soft, plush textures caress your senses, while panoramic windows frame a mesmerizing vista of the city's mesmerising views. Here, amidst the grandeur, you'll feel like you're floating on air, with the world at your feet.

## YOUR ROYAL RETREAT





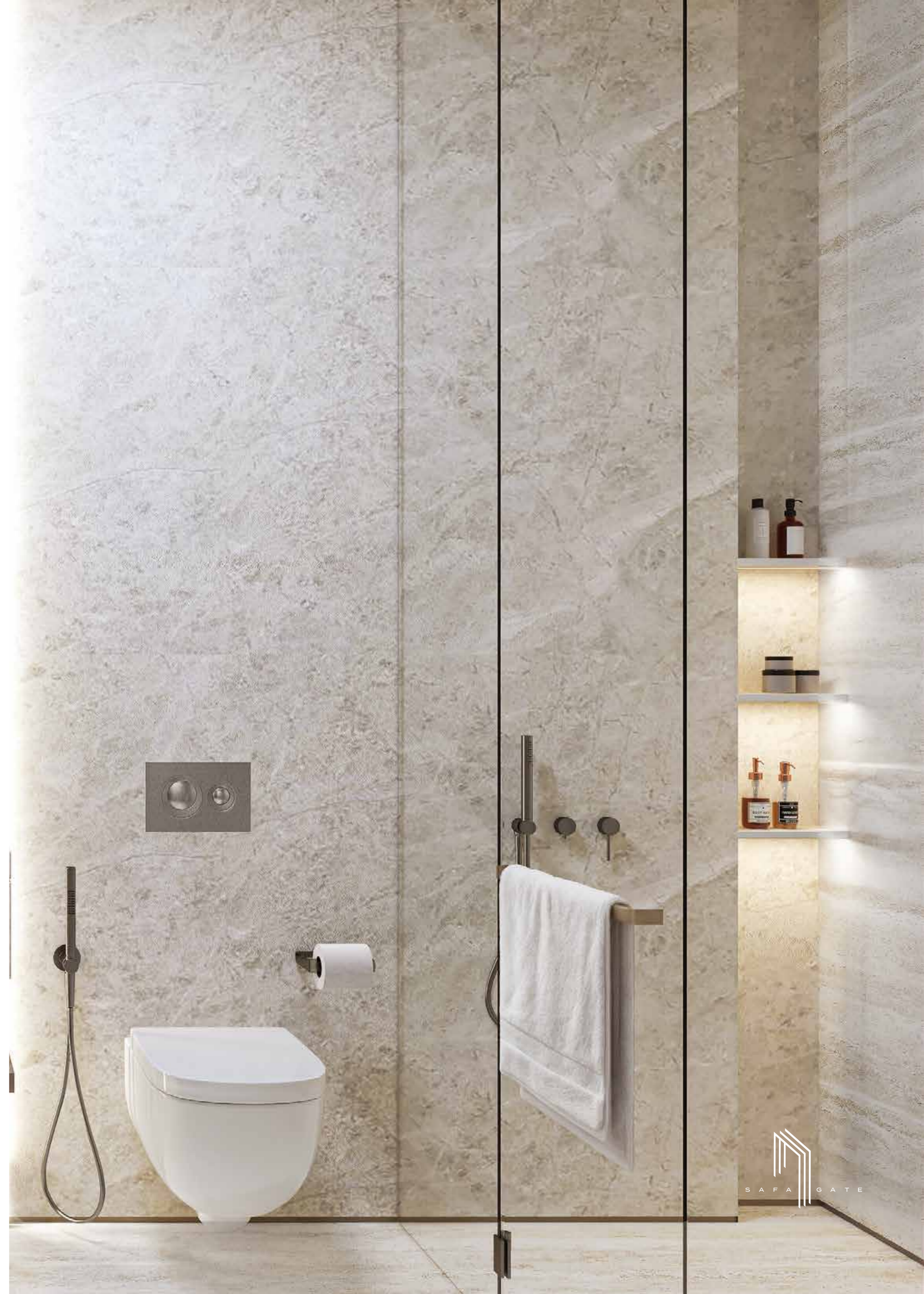


D A M A C S A F A G A T E











# DAMAC PROPERTIES

## LIVE THE LUXURY

Since 2002, DAMAC Properties has been at the forefront of the Middle East's luxury real estate market, delivering award-winning residential, commercial and leisure properties across the region and the world. Invest with DAMAC and partner with a globally recognised leader in premium real estate development.

\*As of Q3 2024



**47,600+**  
UNITS DELIVERED\*



**40,000+**  
UNITS IN PROGRESS\*



**6 MASTER PLAN COMMUNITIES**

LEADING REAL ESTATE DEVELOPER IN THE UAE



**80+ M SQ FT**  
PROJECTS  
UNDER PLANNING  
& DEVELOPMENT



**10+ CITIES**  
GLOBAL PRESENCE



**GLOBAL BRAND COLLABORATIONS**



## LUXURY BY APPOINTMENT

CONTACT US AT ANY OF OUR OFFICES OR VISIT [DAMACPROPERTIES.COM](https://damacproperties.com)

### UNITED ARAB EMIRATES

Dubai  
Tel: 800-DAMAC (800-32622)  
E-mail: [dubai@damacgroup.com](mailto:dubai@damacgroup.com)

Park Towers – Sales Centre  
Dubai International Financial Centre

AYKON City – Sales Centre  
Floor 63, Sheikh Zayed Road

DAMAC Hills – Sales Centre  
Golf Veduta, Townhouse TH2

DAMAC Hills – Sales Centre  
Bellavista (Carson Building)

DAMAC Hills 2 – Sales Centre  
Amazonia Cluster, Villa 333

DAMAC Hills 2 – Sales Centre  
Water Town

### QATAR

Building 90, New Solta Area  
Ali bin Abi Talib Street  
Next to Omar bin Al Khattab  
Health Centre  
Tel: +974 44 666 986  
Fax: +974 44 554 576  
E-mail: [doha@damacgroup.com](mailto:doha@damacgroup.com)

### KINGDOM OF SAUDI ARABIA

DAMAC Towers Riyadh  
South Tower  
Olaya District  
King Fahd Road  
PO Box 102460  
Tel: +966 11 835 0300  
E-mail: [ksa@damacgroup.com](mailto:ksa@damacgroup.com)

### TURKEY

Levazim, Mah. Koru Sk.  
Zorlu Centre No. 2  
IC Kapi No. 347,  
Beşiktaş/Istanbul  
Turkey  
Tel: +90 212 892 0327  
Fax: +90 212 890 7184  
E-mail: [turkey.office@damacgroup.com](mailto:turkey.office@damacgroup.com)

### UNITED KINGDOM

DAMAC Tower  
63-71 Bondway London  
SW8 1SQ  
Tel: +44 (0) 207 590 8050  
[damactower.co.uk](http://damactower.co.uk)

### CHINA

Beijing  
East Tower  
No.1 East Middle 3rd Road  
Beijing 100020  
4th Floor  
Unit O3

Shanghai  
3 Corporate Avenue  
168 Hubin Road,  
Huangpu District  
Shanghai 25F  
25th Floor  
Units 2510-2511

### HONG KONG

ICBC Tower  
Three Garden Road, Central  
15th Floor  
Suite 1511

### SINGAPORE

Asia Square Tower 1  
Marina View, Marina Bay  
Singapore O18960  
11th Floor  
Unit 11-06

