

Awakening the senses
to something new



Welcome to

OCEAN HOUSE

ELLINGTON

An exclusive collection of oceanfront residences surrounded by an oasis of palm trees and abundant flora and fauna delivering dramatic views of the ocean's turquoise water.





A home of unique experiences curated for residents
seeking a lifestyle incomparable to anywhere else

An aerial photograph of Palm Jumeirah, Dubai, at sunset. The island is crescent-shaped and surrounded by the blue sea. The sky is filled with soft, golden light from the setting sun, with wispy clouds. The city skyline of Dubai is visible in the background, with numerous skyscrapers. The foreground shows the curved edge of the island with some buildings and greenery.

A continuation of a design legacy on the Palm's Northeastern Crescent

Palm Jumeirah embodies a modern era of leisure and innovation. Yet through its relationship with the sea, it is forever linked to Dubai's maritime heritage by 17 fronds and a crescent-shaped outer beach reconnecting the city with the restorative effects of the ocean.

Far more than an island, The Palm is a true marvel of engineering symbolic of the region's yearning for individualism and modernization.



Discover a new state of flow

Ocean House is a design identity that links the fluidity of the ocean to the curves of the property's architecture. Using soft shadows and intricate textures, it communicates a seamless state of flow.



Every detail matters

In both its interior and exterior, Ocean House's, design language exudes uniqueness and embraces the unexpected. Contemporary unprecedented layers and shapes, clean travertine tones, natural woods and the masterful use of natural light reflect a design philosophy in which elegance and appreciation for sleek structures become then the ultimate expression of luxury.



Private pools and gardens bringing living spaces and lifestyles to a higher level



Above & beyond experiences

A wealth of experiences and amenities that fit seamlessly with the unique lifestyles of our residents.

From a garden oasis Olympic pool, wellness spa that features a salt cave, aromatherapy shower experience, hydrotherapy path walks, design-led show kitchen for private functions, club lounge with a cigar terrace and a cinema room.



Drop-off Area
Creating a sense of arrival.



The Lobby
A grand welcome



Pool Deck

Olympic pool in an oasis garden



Health Club

Higher perspectives on fitness



Cinema Room
A movie-theatre experience



Kids' Play Area

Imaginative spaces to explore

A modern, minimalist hallway with a curved ceiling and a large circular skylight. The walls are white, and the floor is light-colored. Three arched doorways with gold-colored frames lead to different rooms. Each doorway has a gold-colored handle and a small sign above it. The first sign reads "Soft Care", the second "Steam", and the third "Infrared Sauna". To the left of the first doorway, there are two large, textured, light-colored vases on the floor. The overall atmosphere is warm and relaxing.

WELLNESS SPA

Soft Care

Steam

Infrared
Sauna

Wellness Spa

Wellness retreat at your doorstep

GROUND FLOOR AMENITIES PLAN

- 01 MAIN ENTRANCE
- 02 KIDS PLAY AREA
- 03 KIDS BATHROOM
- 04 MEETING ROOM
- 05 LOBBY LOUNGE
- 06 LOBBY ENTRANCE
- 07 DROP-OFF AREA
- 08 LOBBY RECEPTION
- 09 CINEMA ROOM
- 10 GAMES ROOM
- 11 ACCESS TO THE POOL TERRACE
- 12 FEATURE STAIRCASE
- 13 OLYMPIC SIZE POOL
- 14 BAJA SHELF
- 15 CABANAS
- 16 SUN LOUNGERS' AREA
- 17 KIDS POOL
- 18 FITNESS STUDIO
- 19 OUTDOOR YOGA DECK
- 20 FEMALE CHANGE ROOM
- 21 MALE CHANGE ROOM
- 22 ACCESS TO WELLNESS SPA
- 23 VISITOR PARKING
- 24 VEHICLE ENTRANCE
- 25 VEHICLE EXIT
- 26 SALT CAVE
- 27 STEAM ROOM
- 28 INFRARED SAUNA ROOM
- 29 PLUNGE POOL
- 30 AROMATHERAPY EXPERIENCE SHOWER
- 31 HYDROTHERAPY PATH WALK
- 32 ACCESS TO BASEMENT PARKING



1ST FLOOR AMENITIES PLAN

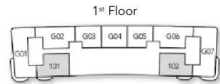
- 01 LOUNGE AREA
- 02 COMMUNAL TABLE
- 03 CO-WORKING AREA
- 04 LIBRARY ROOM
- 05 OUTDOOR TERRACE LOUNGE
- 06 ACCESS TO POOL DECK
- 07 PRIVATE DINING
- 08 SHOW KITCHEN
- 09 PRIVATE LOUNGE
- 10 WASHROOM
- 11 CIGAR ROOM
- 12 GALLERY WALL
- 13 LIFT LOBBIES
- 14 ROOFTOP GARDEN



2 BEDROOM SINGLE ASPECT



Internal Living Area	Outdoor Living Area	Total Living Area
1895.42 sq.ft	153.82 sq.ft	2049.23



2 BEDROOM SINGLE ASPECT
TYPE A



Internal Living Area	Outdoor Living Area	Total Living Area
1519.22 sq.ft	266.62 sq.ft	1785.84 sq.ft

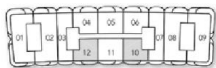


2 BEDROOM SINGLE ASPECT
TYPE B



Internal Living Area	Outdoor Living Area	Total Living Area
1470.78 sq.ft	171.47 sq.ft	1642.25 sq.ft

2nd Floor - 7th Floor



2 BEDROOM SINGLE ASPECT
TYPE C

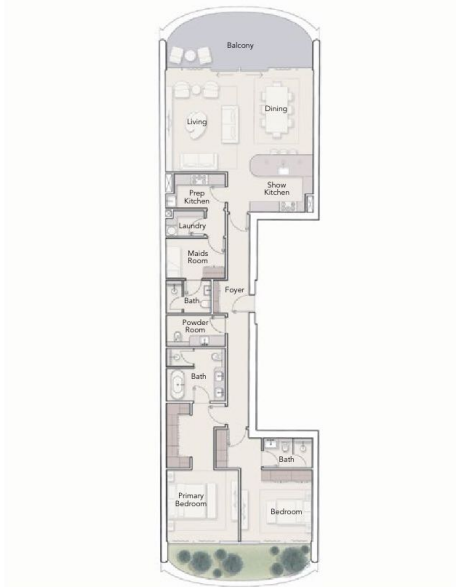


Internal Living Area	Outdoor Living Area	Total Living Area
1665.28 sq.ft	261.67 sq.ft	1926.95 sq.ft

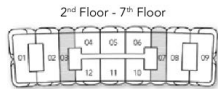
2nd Floor - 7th Floor



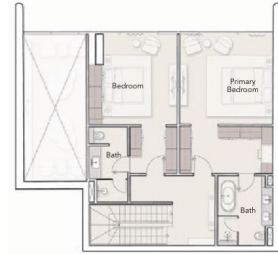
2 BEDROOM DUAL ASPECT



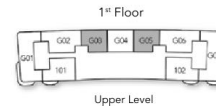
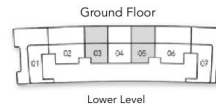
Internal Living Area	Outdoor Living Area	Total Living Area
1879.27 sq.ft	238.96 sq.ft	2118.23 sq.ft



2 BEDROOM DUPLEX



Internal Living Area	Outdoor Living Area	Total Living Area
2770.41 sq.ft	1443.44 sq.ft	4213.85 sq.ft



3 BEDROOM DUAL ASPECT



Internal Living Area 2841.02 sq.ft
 Outdoor Living Area 392.56 sq.ft
 Total Living Area 3233.58 sq.ft

2nd Floor - 7th Floor



3 BEDROOM DUAL ASPECT
 CORNER UNIT

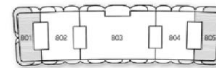


Internal Living Area 2634.46 sq.ft
 Outdoor Living Area 897.49 sq.ft
 Total Living Area 3531.96 sq.ft

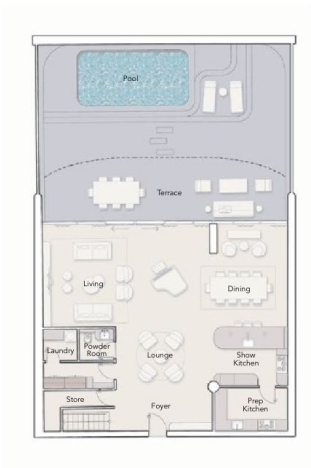
2nd Floor - 7th Floor



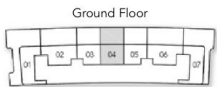
8th Floor



3 BEDROOM DUPLEX



Internal Living Area	Outdoor Living Area	Total Living Area
3325.94 sq.ft	1443.98 sq.ft	4769.91 sq.ft



Lower Level

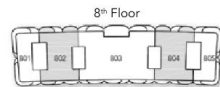


Upper Level

4 BEDROOM DUAL ASPECT



Internal Living Area	Outdoor Living Area	Total Living Area
4720.83 sq.ft	631.52 sq.ft	5352.35 sq.ft

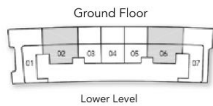


8th Floor

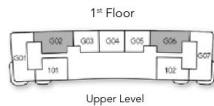
4 BEDROOM DUPLEX



Internal Living Area 3909.45 sq.ft
 Outdoor Living Area 2230.28 sq.ft
 Total Living Area 6139.73 sq.ft

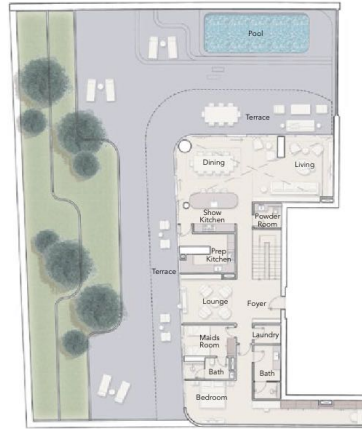


Lower Level

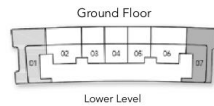


Upper Level

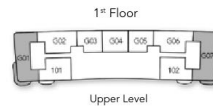
4 BEDROOM DUPLEX
 CORNER UNIT



Internal Living Area 4207.29 sq.ft
 Outdoor Living Area 5710.03 sq.ft
 Total Living Area 9917.32 sq.ft



Lower Level



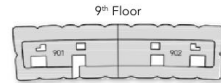
Upper Level

PRESIDENTIAL SUITE
6 BEDROOM DUAL ASPECT



Internal Living Area	Outdoor Living Area	Total Living Area
9917.32 sq.ft	1852.79 sq.ft	11770.11 sq.ft

PENTHOUSE
5 BEDROOM CORNER ASPECT



Internal Living Area	Outdoor Living Area	Total Living Area
5952.97 sq.ft	8083.90 sq.ft	14036.88 sq.ft