



# FALCON

## ISLAND

By AL HAMRA



## 5 BEDROOM VILLA

BUA: 5123 SQ.F

PLOT: 8589 SQ.F



GROUND FLOOR



FIRST FLOOR

The plans, drawings, images, dimensions, area and all information provided herein are indicative, provided for illustrative purposes.

## 4 BEDROOM VILLA

BUA: 3702 SQ.F  
PLOT: 4897 SQ.F



GROUND FLOOR

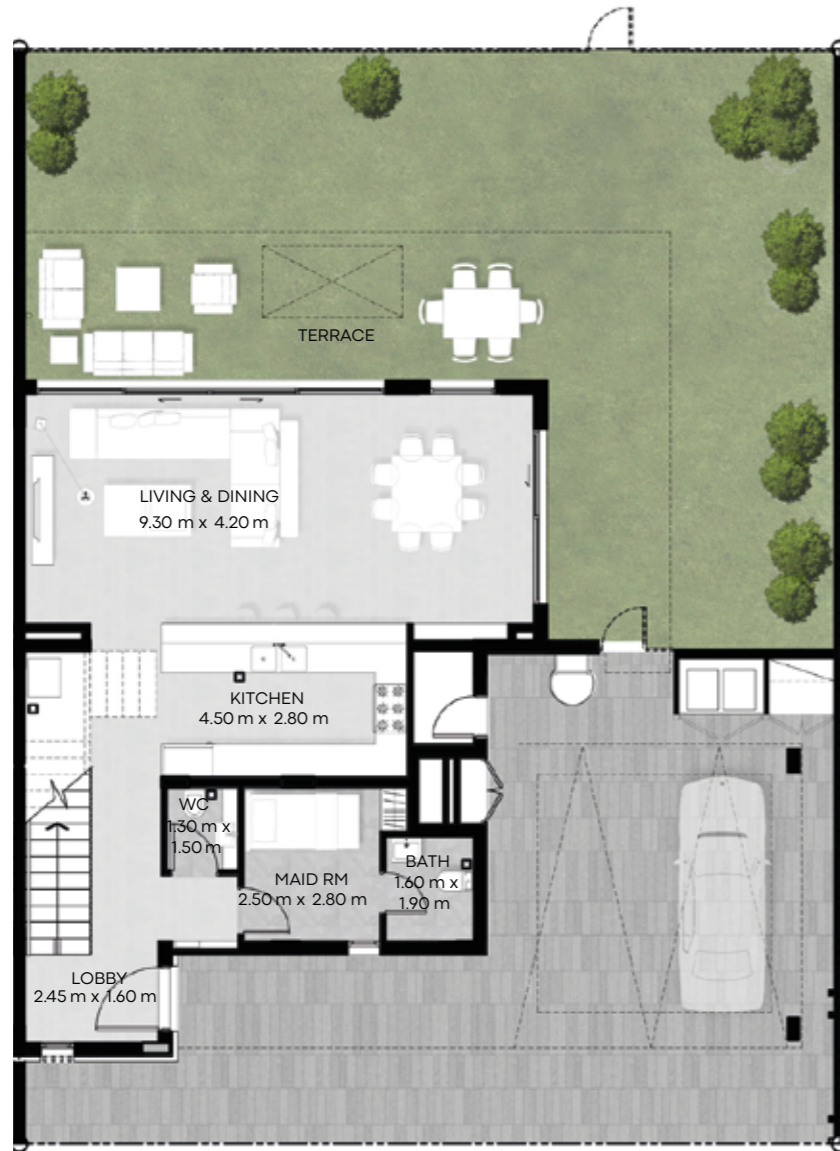


FIRST FLOOR

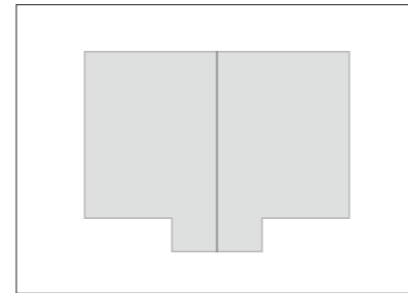
The plans, drawings, images, dimensions, area and all information provided herein are indicative, provided for illustrative purposes.

## 4 BEDROOM SEMIDETACHED

BUA: 2512 SQ.F  
PLOT: 3627 SQ.F



GROUND FLOOR

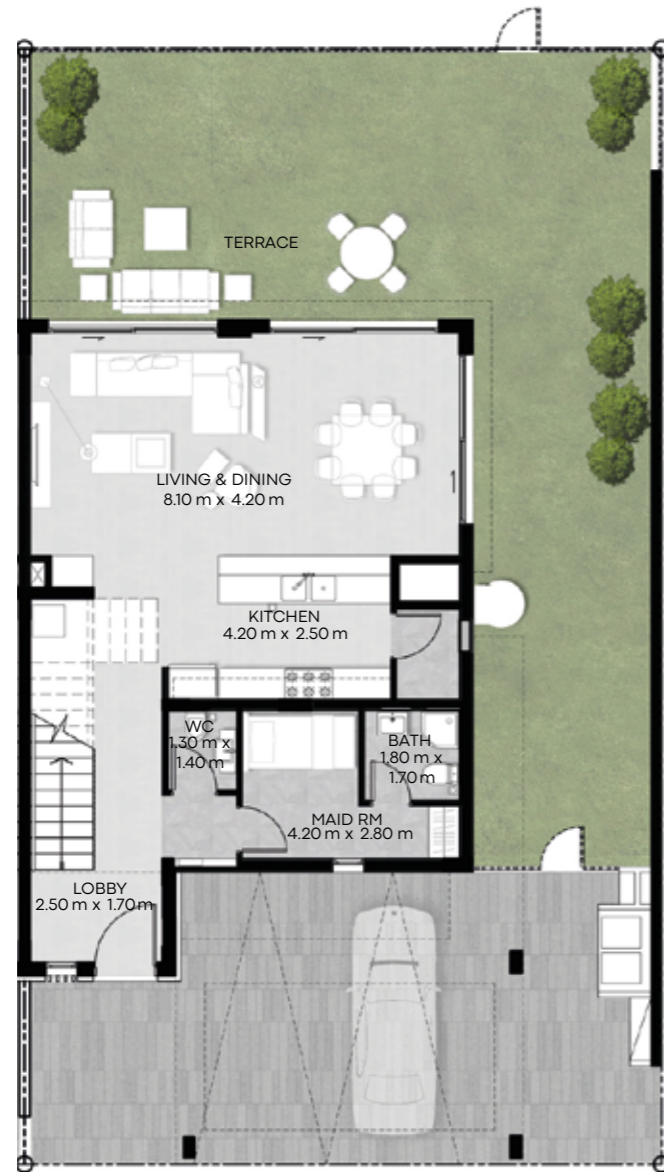


FIRST FLOOR

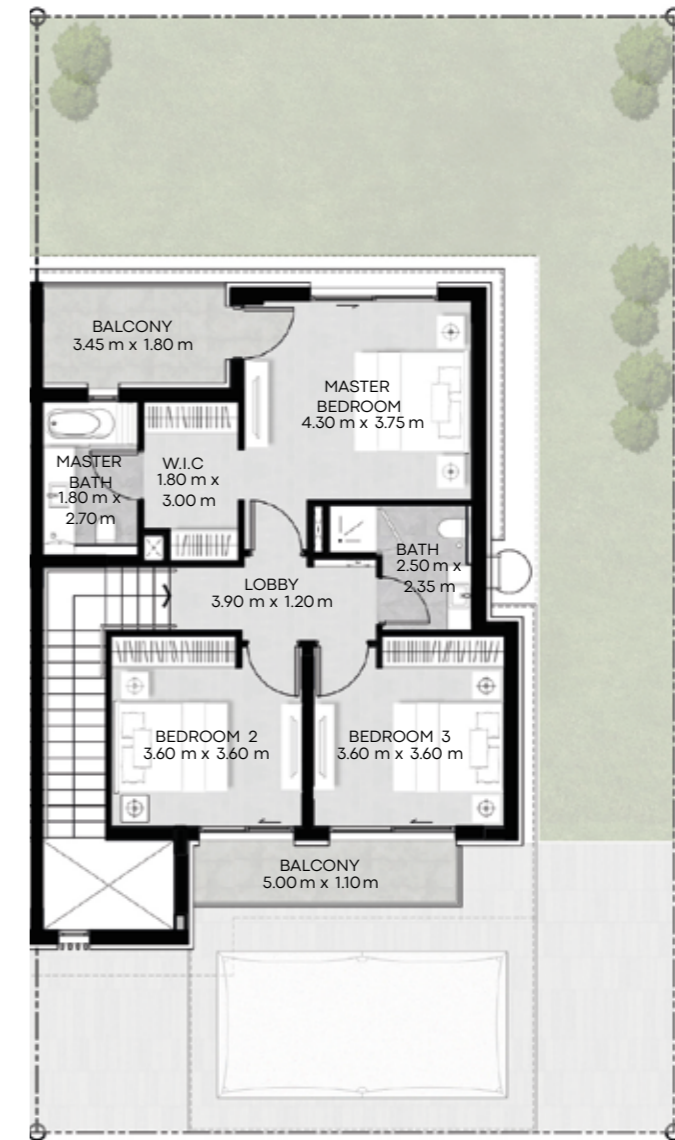
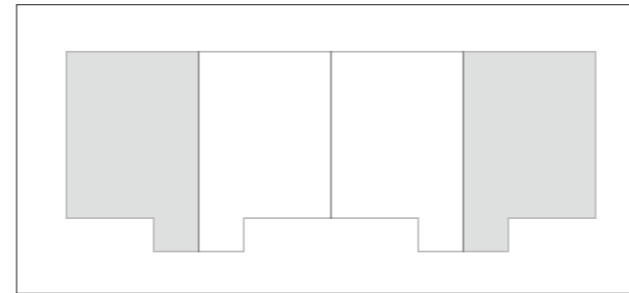
The plans, drawings, images, dimensions, area and all information provided herein are indicative, provided for illustrative purposes.

### 3 BEDROOM SEMIDETACHED

BUA: 1880 SQ.F  
PLOT: 2744 SQ.F



GROUND FLOOR

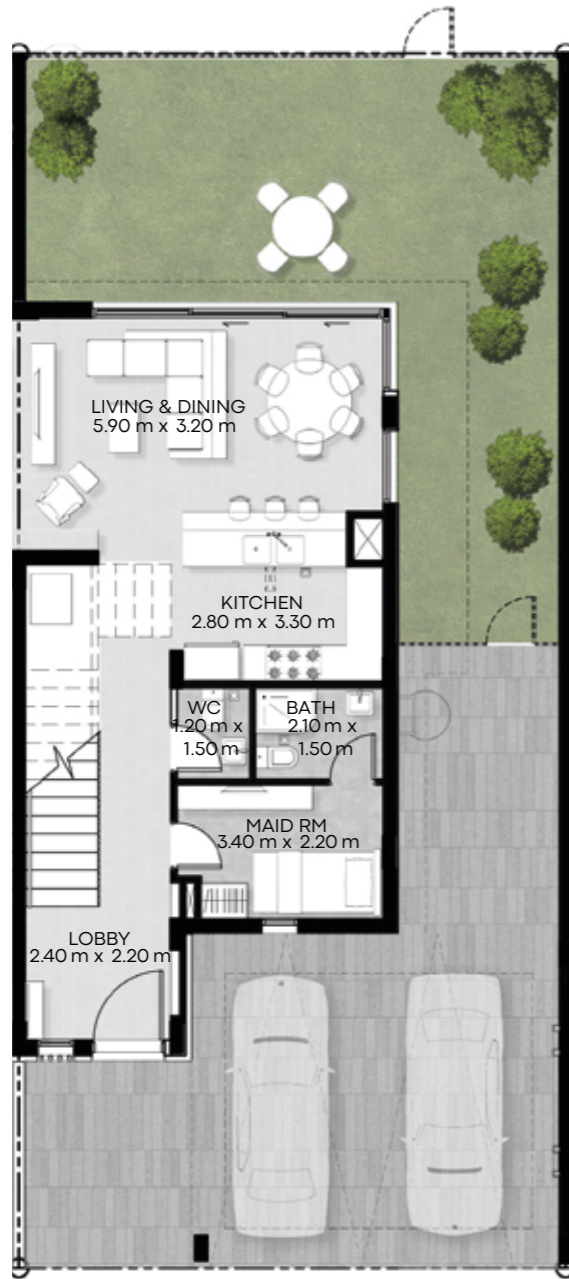


FIRST FLOOR

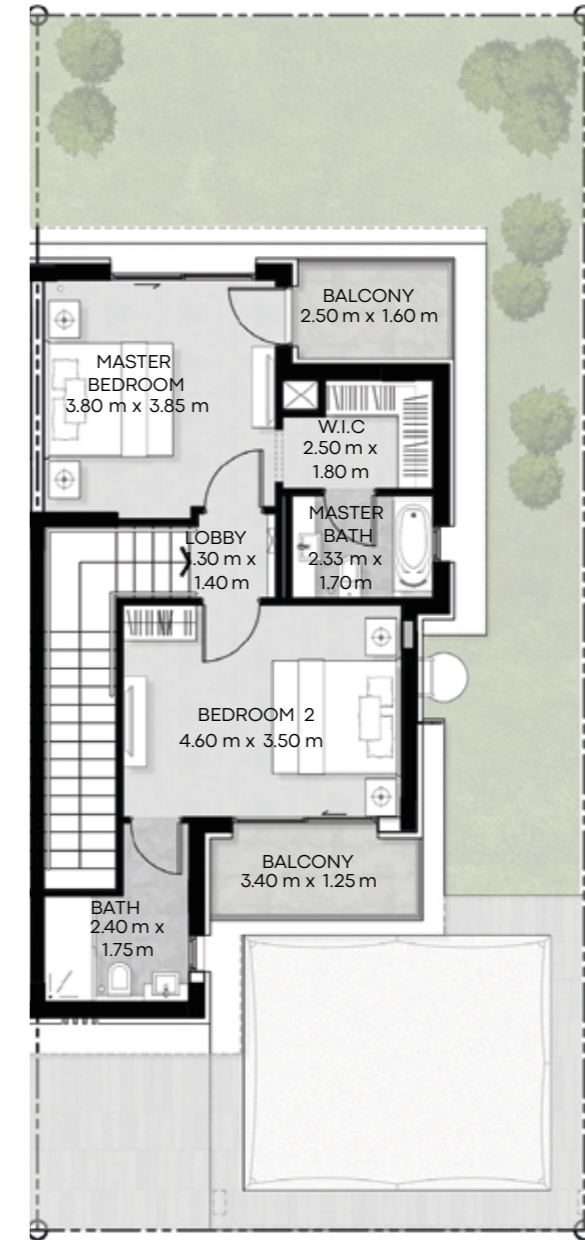
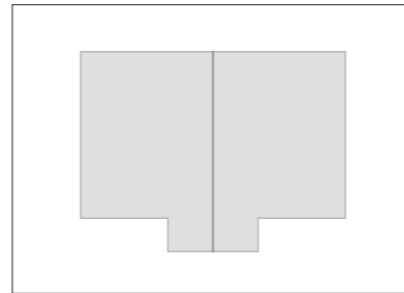
The plans, drawings, images, dimensions, area and all information provided herein are indicative, provided for illustrative purposes.

## 2 BEDROOM SEMIDETACHED

**BUA: 1437 SQ.F**  
**PLOT: 2034 SQ.F**

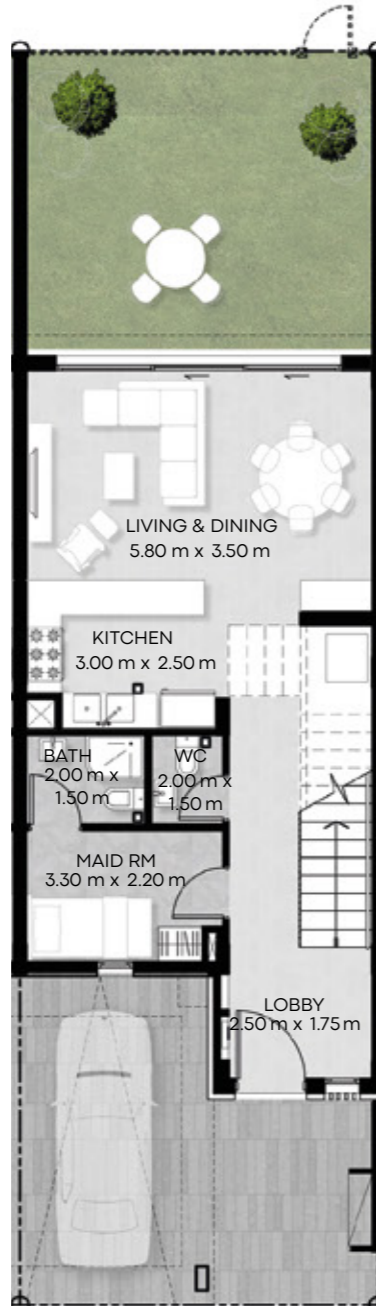


GROUND FLOOR



FIRST FLOOR

The plans, drawings, images, dimensions, area and all information provided herein are indicative, provided for illustrative purposes.

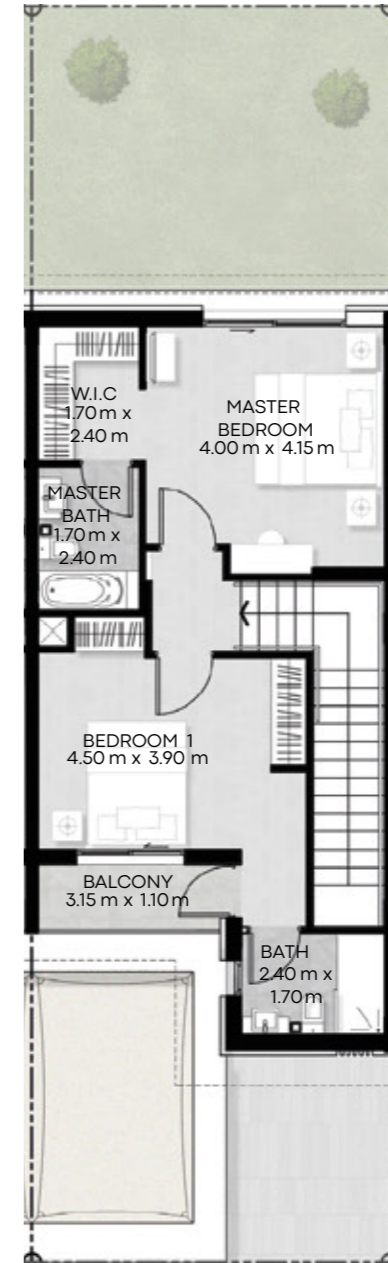
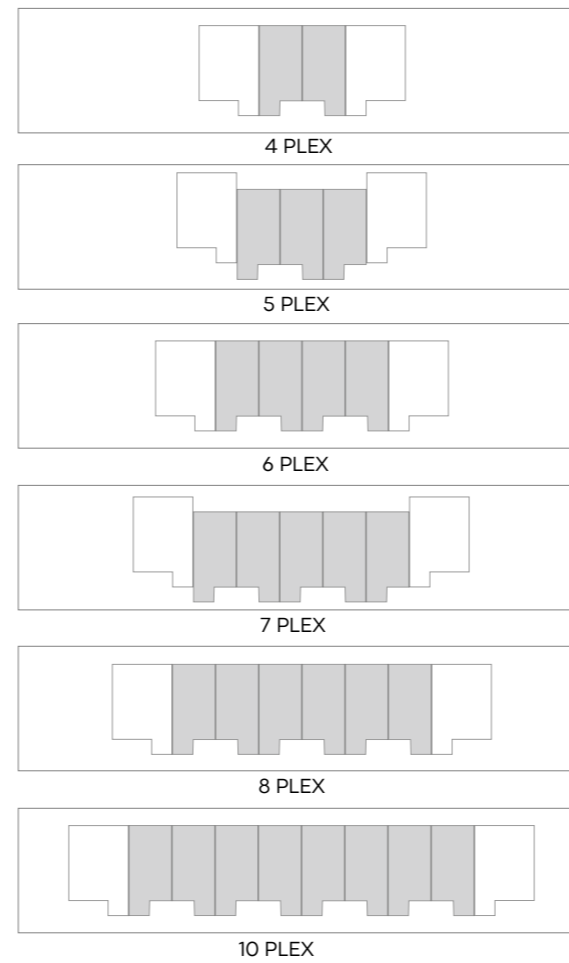


GROUND FLOOR

## TOWNHOUSE

**BUA: 1322 SQ.F**

**PLOT: 1474 SQ.F**



FIRST FLOOR

The plans, drawings, images, dimensions, area and all information provided herein are indicative, provided for illustrative purposes.



@alhamraofficial

E: [sales@alhamra.ae](mailto:sales@alhamra.ae) T: +971 7 243 4477 W: [alhamra.ae](http://alhamra.ae)