

بانثيون  
**PANTHEON**  
DEVELOPMENT



**PANTHEON ELYSEE II**  
WELCOME TO AFFORDABLE LUXURY

Pantheon Elysée I  
Location: District 13 (JVC)



## PROJECTS COMPLETED AND HANDED OVER

Pantheon Boulevard  
Location: District 13 (JVC)



## ABOUT US

Founded in 2001, Pantheon Group began with one startup business distributing Mining and Oil & Gas chemistry, and has grown to have a global presence in the USA, China, India and South America, emerging as a leader in three different industries over the past 19 years, with an annual turnover of more than Dh1.2B (USD \$325M) with headquarters in Dubai. Each successful venture has led to the next, and our interests have diversified over time, so that today, we have interests in mining, oil & gas, financial services viz. Asset Management, Financial Advisory services in global capital markets.

Our newest venture incorporated in 2016 is Pantheon Development. In each of these markets, Pantheon has achieved great success, often outperforming other companies who have been in that market for decades. Pantheon group quickly became the largest Iodine distributor in the world and remains one of the dominant stakeholder in the Iodine industry.

Our venture into financial services, received a lot of attention from the industry and the media (CNBC, Bloomberg, Reuters). Pantheon Group is built on the foundation of strategic planning and impeccable execution. We endeavor to grow, and diversify, and become a lead player in any industry we decide to enter. This confidence is based, not only on the successful track record over the last 19 years, but also because we firmly believe in our core values.

# Why invest in Dubai?



High rental returns

0%

0% tax on residential real estate



Fixed exchange rate (US dollar and dirham)



Residence visa



Safe and reliable investment environment



Sustained economic growth



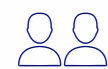
World-class education



Readily available financing options



Ease of business set up



Consistently growing population



International finance center



# ELYSÉE II

BY PANTHEON





#### AMENITIES WITHIN THE PROJECT

- Kids Play Area
- Landscapping in around the pool area
- Gym facing the pool
- Adult Swimming pool
- Children's Swimming pool
- Spacious parking spaces

#### ANTICIPATED COMPLETION DATE

Q2 2022

#### ANTICIPATED SERVICE CHARGE

AED 15 per sq.ft.

#### SIZE RANGE PER UNIT TYPE

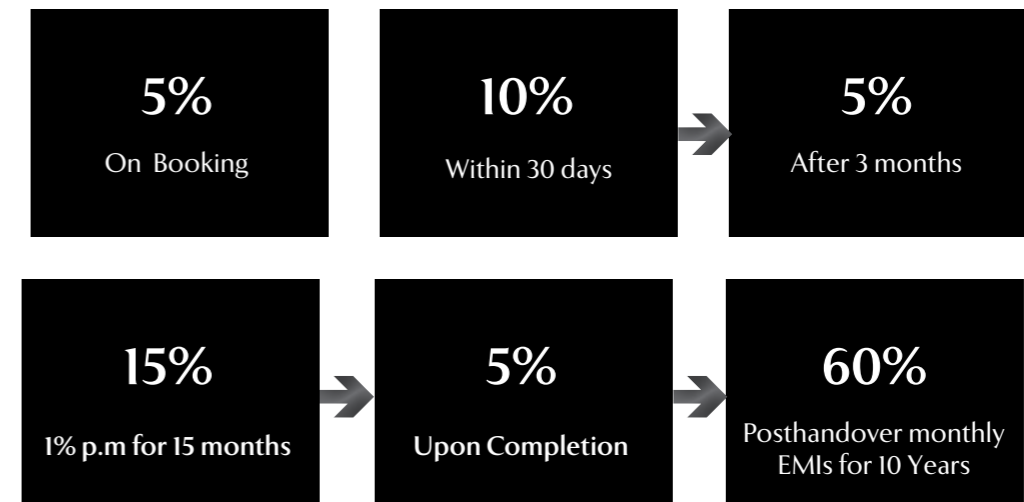
- Studios: 134 Units (389.76 sqft to 538.20 sqft)
- 1 Bedroom: 22 Units (658.15 sqft to 899.32 sqft)
- 2 Bedrooms: 5 Units (1087.26 sqft to 1430.63 sqft)
- Penthouse size: 1 Unit (2273 sqft)

#### LOCATION:

- Dubai - Jumeirah Village Circle
- It is located near Sheikh Mohammed Bin Zayed Road and Al Khail Road
- Mall of the Emirates: 15 minutes
- Burj Khalifa and Dubai Mall: 20 minutes
- Palm Jumeirah: 20 minutes
- Dubai International Airport: 25 minutes
- Al Makhtoum Airport: 30 minutes
- Expo 2020 site: 20 minutes



#### PAYMENT PLAN





## UNIT FEATURES

- State of the art kitchen
- Elegantly proportioned window-walls with neighborhood views.
- Compact unit sizes
- Spacious Balconies
- Lush and intimate interiors







# ELYSÉE II

BY PANTHEON

STUDIO APARTMENT G02



STUDIO APPARTMENT G02

UNIT AREA : 32.80 SQ.M

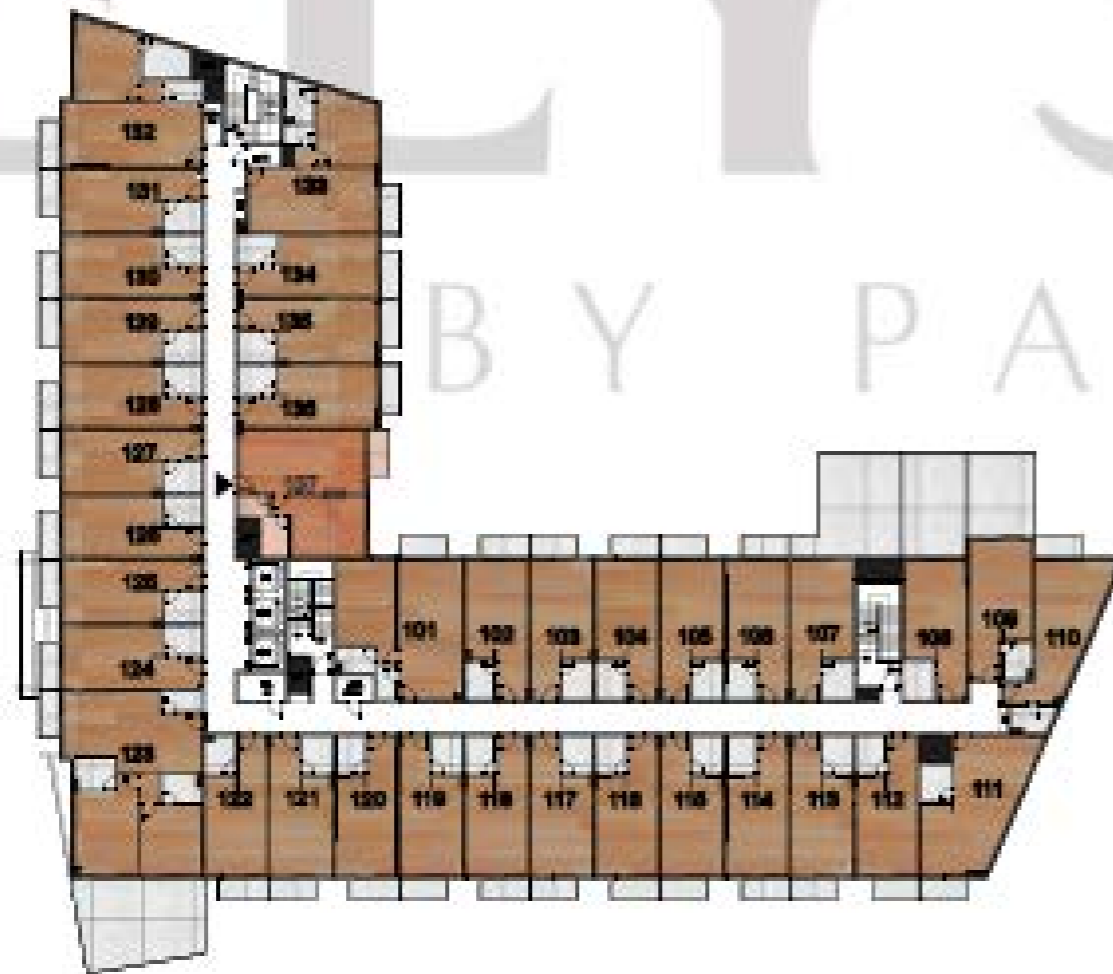
BALCONY AREA: 5.23 SQ.M

TOTAL AREA: 38.03SQ.M (409.35 SQ.FT)

# ELYSÉE II

BY PANTHEON

ONE BEDROOM APARTMENT 137



ONE BEDROOM APPARTMENT 137

UNIT AREA : 57.59 SQ.M

BALCONY AREA: 3.92 SQ.M

TOTAL AREA: 61.51 SQ.M (662.09 SQ.FT)

بانتھون

PANTHEON

DEVELOPMENT

[www.pantheondevelopment.ae](http://www.pantheondevelopment.ae)