

# VILLA *del* DIVOS

DUBAI ISLANDS



*Collection  
Residences*

BY MR. EIGHT DEVELOPMENT



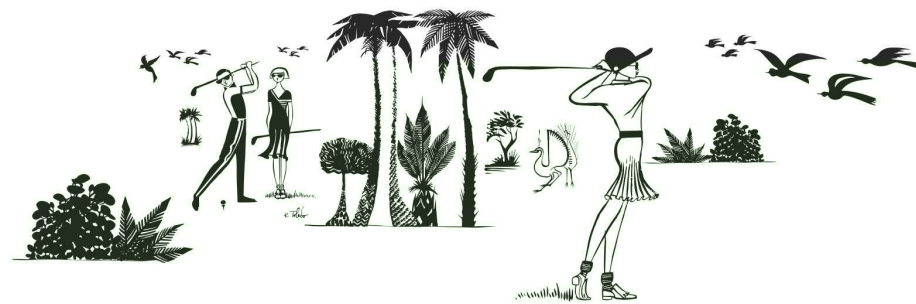
# BOUTIQUE RESIDENCES

APARTMENT BUILDING WITH  
BOUTIQUE RESIDENCE SERVICES.





*Completed Projects*  
EUROPEAN EXPERTISE

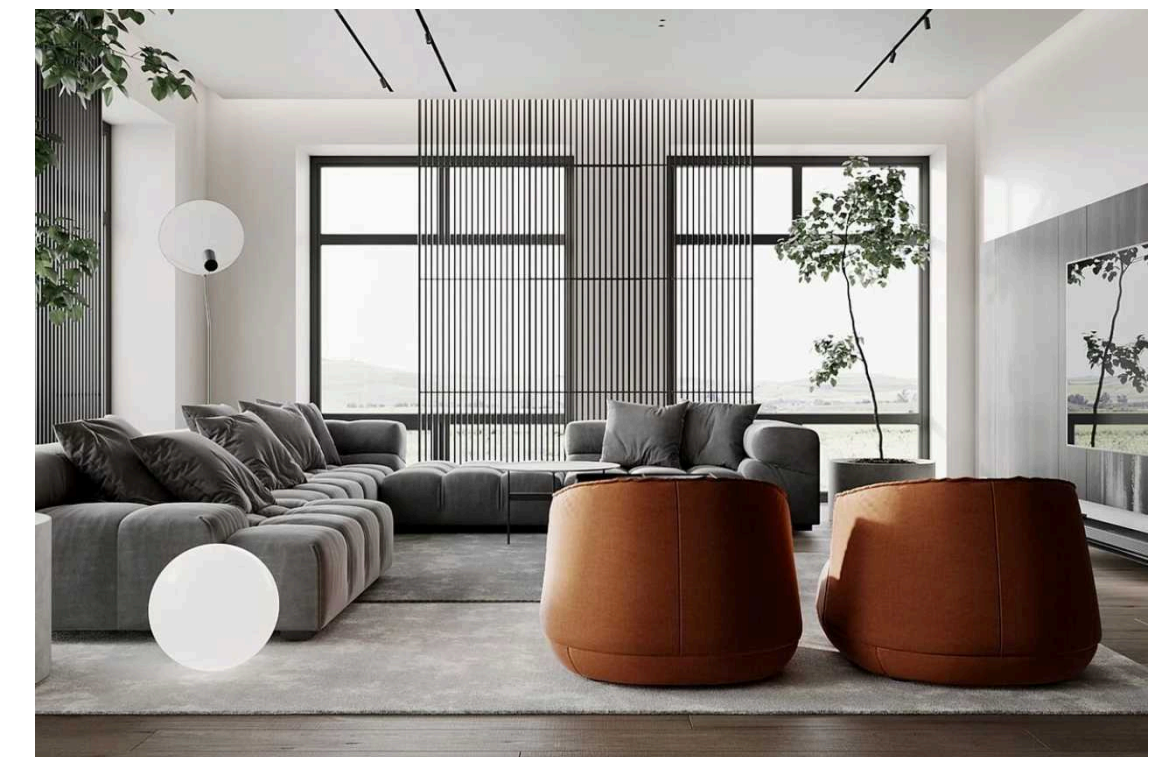
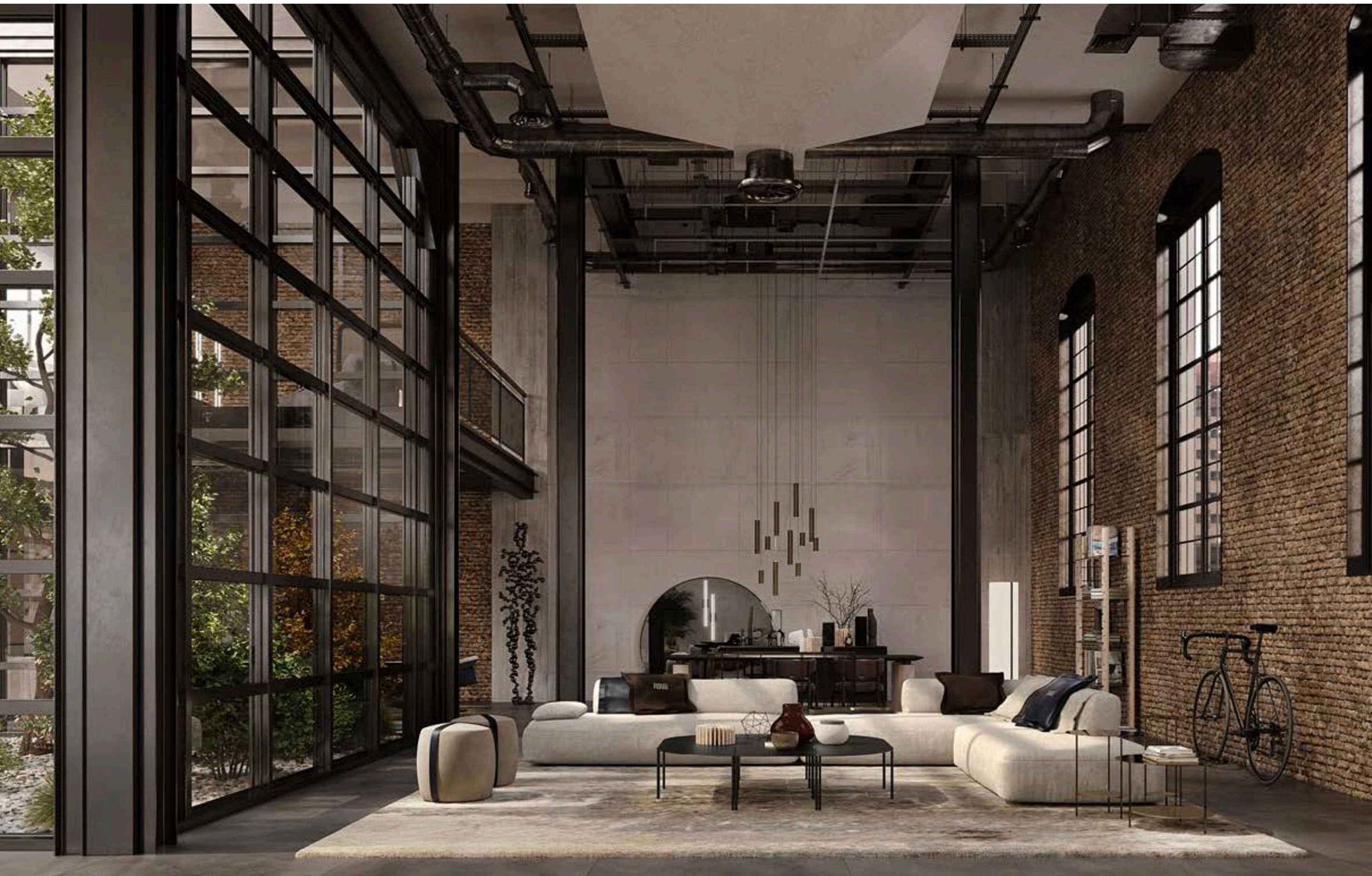


With 20 years of experience in constructing  
and designing multi-story buildings,  
our previous projects have been realized in Northern Europe along the  
shores of the Baltic Sea, as well as in Spain on the Canary Islands,  
showcasing a legacy of expertise and vision.



# EZERA SOLO

RIGA | RELEASED IN 2020



Ezera SOLO is a modern residential complex with 105 apartments set in a quiet, green area of Riga near a picturesque lake. Perfect for families seeking privacy and comfort, this project was honored as the “Most Well-Maintained Development in Operation,” showcasing its superior upkeep and management. It was completed in 2020

[Open in Google](#)







# AMENITIES

**ELEGANT SIGNATURE LOBBY WITH BEAUTIFUL ORGANIC TEXTURE — RICHLY GRAINED STONE, CUSTOM TEXTURED WOOD AND SMOOTH VEINED MARBLE—ARE HARMONIOUSLY BALANCED BRUSHED PLATINUM FINISHES.**

- **LOBBY** ITALIAN FURNITURE BY CASSINA, MINOTTI AND TOM DIXON LONDON & FLOSS LIGHTING ITALY, LALIQUE FRANCE

## **GYM / WELLNESS**

- GYM TECHNO GYM DESIGNED BY ANTONIO CITTERIO
- SPA MASSAGE ROOM, TEA ROOM WITH MORE THAN 100 TEA COLLECTIONS SELECTED BY EMILIO CIPRIANI
- ACCESS TO UNIQUE BEACH MEMBERS CLUB / Q1 2027
- SUNSET TERRACE FOR YOGA MEDITATION
- INFINITY POOL & PRIVATE SUN CABANAS
- STEAM SAUNA & CRYOTHERAPY STUDIO
- CHILDREN PLAY ZONE & LAGOON







A modern, multi-story villa at dusk. The building features a glass facade and a starlight ceiling. The ground floor is open-plan, showing a living area with a sofa and a dining table. The upper floors have balconies with potted plants and outdoor furniture. A large swimming pool is in the foreground, surrounded by a patio with lounge chairs and a fire pit. The background shows a tropical landscape with palm trees and a view of the ocean.

SIGNATURE  
GARDEN HOMME  
*with starlight headlining*















# BATHROOM WITH SEA VIEW









SIGNATURE MR EIGHT  
BUTLER SERVICE







## MR. EIGHT

BOUTIQUE APARTMENTS  
ELEGANCE AND DESIGN  
EXCEPTIONAL SERVICE

# BOUTIQUE RESIDENCES BRANDED BY

## EVERY APARTMENT COMES WITH BOUTIQUE-STYLE RESIDENCE SERVICES

Mr. Eight Development is shaping Dubai Island into a vibrant community that redefines luxury living. Beyond offering a new standard of service, the development includes exclusive amenities such as a beach club, premium cars, and boats available for all residents who purchase apartments.

To ensure these exceptional standards, Mr. Eight Development is establishing a dedicated service company. This specialized entity will manage all operations, guaranteeing seamless maintenance and unparalleled experiences for every homeowner.

IN EVERY MR. EIGHT PROPERTY, A DEDICATED DIRECTOR OF RESIDENCES AND CONCIERGE TEAM IS ON HAND TO CATER TO YOUR REQUESTS, ENSURING THE HIGHEST LEVEL OF TAILORED SERVICE MEETS YOUR EVERY NEED.

1

Room Service

2

Concierge Access

3

Beach Club Access

4

Valet Parking

5

Rolls Royce House Car

6

On-Site Bell Boy

7

Motorboat for Residents

8

In House massage services



# ROLLS ROYCES WITH DRIVER

Each resident of our community enjoys the exclusive privilege of pre-booking a private chauffeur-driven Rolls-Royce. Whether it's for an airport pickup or transportation to business meetings, this service ensures unmatched comfort and convenience.







# RIVA ITALIAN BOAT WITH CAPTAIN

Each resident of our community enjoys the exclusive privilege of pre-booking a luxury Italian Riva motorboat with a professional captain. Whether for navigating Dubai's waterways or savoring breathtaking sunsets, this service provides an unmatched experience of elegance and convenience.

*a life aquatic*



# COLLECTION OF ONLY 96 SUITS

BOUTIQUE RESIDENCES BRANDED BY MR EIGHT

## HANDOVER / Q1 2027

- BOOKING 50.000 AED
- 20%+4% WITHIN 30 DAYS AFTER (LAUNCH 08.02.2025)
- 5% 6 MONTH AFTER LAUNCH
- 5% ON 20% OF CONSTRUCTION
- 5% ON 75% OF CONSTRUCTION
- 65% ON HANDOVER

## PAYMENT PLAN

# 35 / 65

	STARTING FROM
5-BED - PENTHOUSE	
4-BED -	7,3 AED
3-BED -	4,9 AED
2-BED -	3,2 AED
1-BED -	2,3 AED





## MR. EIGHT

BOUTIQUE APARTMENTS  
ELEGANCE AND DESIGN  
EXCEPTIONAL SERVICE

### BUILDING STRUCTURE

G + 2P + 12

- FIVE BED / 4 UNITS / 2 PARKING
- FOUR BED / 8 UNITS / 2 PARKING
- THREE BED / 39 UNITS / 2 PARKING
- TWO BED / 35 UNITS / 1 PARKING
- ONE BED / 10 UNITS / 1 PARKING
- ONE EXTRA PARKING AED 60.000

### UNIT BREAKDOWN

- 1 BED 758-940 FT<sup>2</sup> PRICE 2.3 - 2.4 M
- 2 BED 1088-2403 FT<sup>2</sup> PRICE 3.2 - 5.5 M
- 3 BED 1502 - 2495 FT<sup>2</sup> PRICE 4.9 - 10 M
- 4 BED 2455-4101 FT<sup>2</sup> PRICE 7.3 - 9.4 M
- 5 BED 6240-7072 FT<sup>2</sup> PRICE FROM 28 M

### SERVICE CHARGE

- 25 AED/FT<sup>2</sup>

# AVAILABILITY LIST

## PRE-SALE PRICE

# 1

BEDROOM

1 BED  
\* UNIT NUMBER: 604  
\* SEA VIEW  
\* SUITE AREA 639 FT<sup>2</sup>  
\* BALCONY AREA 119 FT<sup>2</sup>  
\* TOTAL AREA 758 FT<sup>2</sup>  
\* PRICE 2.300.000 AED

# 2

BEDROOM

2 BED  
\* UNIT NUMBER: 407  
\* BURJ VIEW  
\* SUITE AREA 963 FT<sup>2</sup>  
\* BALCONY AREA 125 FT<sup>2</sup>  
\* TOTAL AREA 1088 FT<sup>2</sup>  
\* PRICE 3.264.000 AED

# 3

BEDROOM

3 BED  
\* UNIT NUMBER: 206  
\* SEA VIEW  
\* SUITE AREA 1325 FT<sup>2</sup>  
\* BALCONY AREA 176.85 FT<sup>2</sup>  
\* TOTAL AREA 1502 FT<sup>2</sup>  
\* PRICE 4.950.000 AED

# 4

BEDROOM

4 BED DUPLEX  
\* UNIT NUMBER: 106  
\* BURJ VIEW  
\* SUITE AREA 1820 FT<sup>2</sup>  
\* BALCONY AREA 846 FT<sup>2</sup>  
\* TOTAL AREA 2667 FT<sup>2</sup>  
\* PRICE 7.300.000 AED

# 5

BEDROOM

5 BED PENTHOUSE  
\* UNIT NUMBER: 1106  
\* SEA VIEW  
\* SUITE AREA 3736 FT<sup>2</sup>  
\* BALCONY AREA 2631 FT<sup>2</sup>  
\* TOTAL AREA 6367 FT<sup>2</sup>  
\* PRICE: 29.000.000 AED

2 BED  
\* UNIT NUMBER: 501  
\* SEA VIEW  
\* SUITE AREA 1096 FT<sup>2</sup>  
\* BALCONY AREA 151 FT<sup>2</sup>  
\* TOTAL AREA 1248 FT<sup>2</sup>  
\* PRICE 3.840.000 AED

2 BED DUPLEX WITH TERRACE  
\* UNIT NUMBER: 102  
\* SEA VIEW  
\* SUITE AREA 1187 FT<sup>2</sup>  
\* BALCONY AREA 1215 FT<sup>2</sup>  
\* TOTAL AREA 2403 FT<sup>2</sup>  
\* PRICE 4.200.000 AED

3 BED  
\* UNIT NUMBER: 802  
\* SEA VIEW  
\* SUITE AREA 1256 FT<sup>2</sup>  
\* BALCONY AREA 276 FT<sup>2</sup>  
\* TOTAL AREA 1503 FT<sup>2</sup>  
\* PRICE 5.390.000 AED

3 BED WITH TERRACE POOL  
\* UNIT NUMBER: 101  
\* SEA VIEW  
\* SUITE AREA 1247 FT<sup>2</sup>  
\* BALCONY AREA 1548 FT<sup>2</sup>  
\* TOTAL AREA 2795 FT<sup>2</sup>  
\* PRICE 6.380.000 AED

4 BED DUPLEX  
\* UNIT NUMBER: 602  
\* SEA VIEW  
\* SUITE AREA 1913 FT<sup>2</sup>  
\* BALCONY AREA 629 FT<sup>2</sup>  
\* TOTAL AREA 2542 FT<sup>2</sup>  
\* PRICE: 8.900.000 AED



*Collection*



*Residences*

BY MR. EIGHT DEVELOPMENT