

MADA'IN

Properties



INDEX

■ About Mada'in	3
■ CEO Message	4
■ Vision & Mission	5
■ Core Values - Mission & Vission	6
■ Our Philosophy & Future Plan	7
■ Future Plan	8
■ What Makes Us Unique	9
■ Mada'in Tower	10
■ Mada'in Square	12
■ Marina Arcade Tower	14



Mada'in Properties PJSC

- Property Investment
- Property Development
- Residential Sales and Leasing
- Project Management

Overview

Mada'in Properties PJSC is a prominent and well-established private joint stock real estate development company, operating in the United Arab Emirates since 2006 with a formidable presence in the market.

Mada'in Properties PJSC has a rich history of delivering high-quality boutique residential, commercial, and mixed-use developments.

Mada'in Properties PJSC prides itself on innovation, sustainability, and an unwavering commitment to creating exceptional living and working spaces in the UAE.



CEO Message

I am immensely proud to address you as the CEO of Mada'in Properties PJSC in our company profile. Our journey in the real estate industry has been defined by innovation, resilience, and an unwavering commitment to excellence. At Mada'in Properties PJSC, we stand as architects of aspiration and builders of dreams.

Our mission is to create iconic, sustainable, and community-centric real estate projects that provide value to our customers, stakeholders, and society at large.

Our success is not solely measured by the structures we construct, but by the positive impact we make on people's lives. It's our belief that real estate isn't just about bricks; it's about the comfort of home, the efficiency of workspaces, and the sustainability of communities.

We're dedicated to weaving these elements seamlessly into our developments. What sets us apart is our commitment to innovation and sustainability.

We constantly push the boundaries of design, incorporating cutting-edge technology and eco-friendly practices into every project.

Our pursuit of excellence is unwavering, and we pride ourselves on exceeding expectations, whether it's in architecture, construction quality, or customer service.

I want to take this opportunity to acknowledge the extraordinary efforts of our dedicated team, who consistently deliver exceptional results. Their passion, professionalism, and commitment to our shared vision are the driving force behind our achievements. As we embark on new horizons and embrace the ever-evolving real estate landscape, I want to express my gratitude to our valued partners, clients, and all stakeholders who have entrusted us with their support.

We remain resolute in our dedication to delivering unparalleled real estate solutions that not only meet but exceed your expectations.



Dr. Yousuf Al Mulla
CEO, Mada'in Properties PJSC

Vission

To emerge as the leading real estate developer in the United Arab Emirates and the broader region, renowned for providing luxurious property solutions, shaping urban landscapes, enhancing lifestyles, and contributing to the housing and urban development plans of the UAE.

Mission

To create iconic, sustainable, and community - centric real estate projects that provide value to our customers, stakeholders, and the society at large.



Core Values

Innovation

We continuously seek innovative solutions in design, technology, and sustainability.

Quality

We are committed to delivering projects of the highest quality and craftsmanship.

Sustainability

We embrace eco-friendly practices and responsible resource management.

Customer Centre

We place customer satisfaction at the heart of our operations, emphasizing open communication and personalized service.

Integrity

We uphold the highest ethical standards in all our dealings, fostering trust and transparency.

Community Engagement

We actively contribute to the communities in which we operate, supporting social responsibility programs, sponsorships, and partnerships with charitable organizations.



Our Philosophy

Competitive advantage

Mada'in Properties PJSC differentiates it'self through a steadfast commitment to sustainability, pioneering technology adoption, and a dedication to customer-centric design. The company's extensive history in the uae's real estate market and its strong relationships with stakeholders serve as a cornerstone of its competitive edge.

Market presence

Mada'in Properties PJSC maintains a robust presence across key cities in the uae, having successfully served both local and international clients. Our market presence is a testament to our dedication and competence in real estate development.

Sustainability initiatives

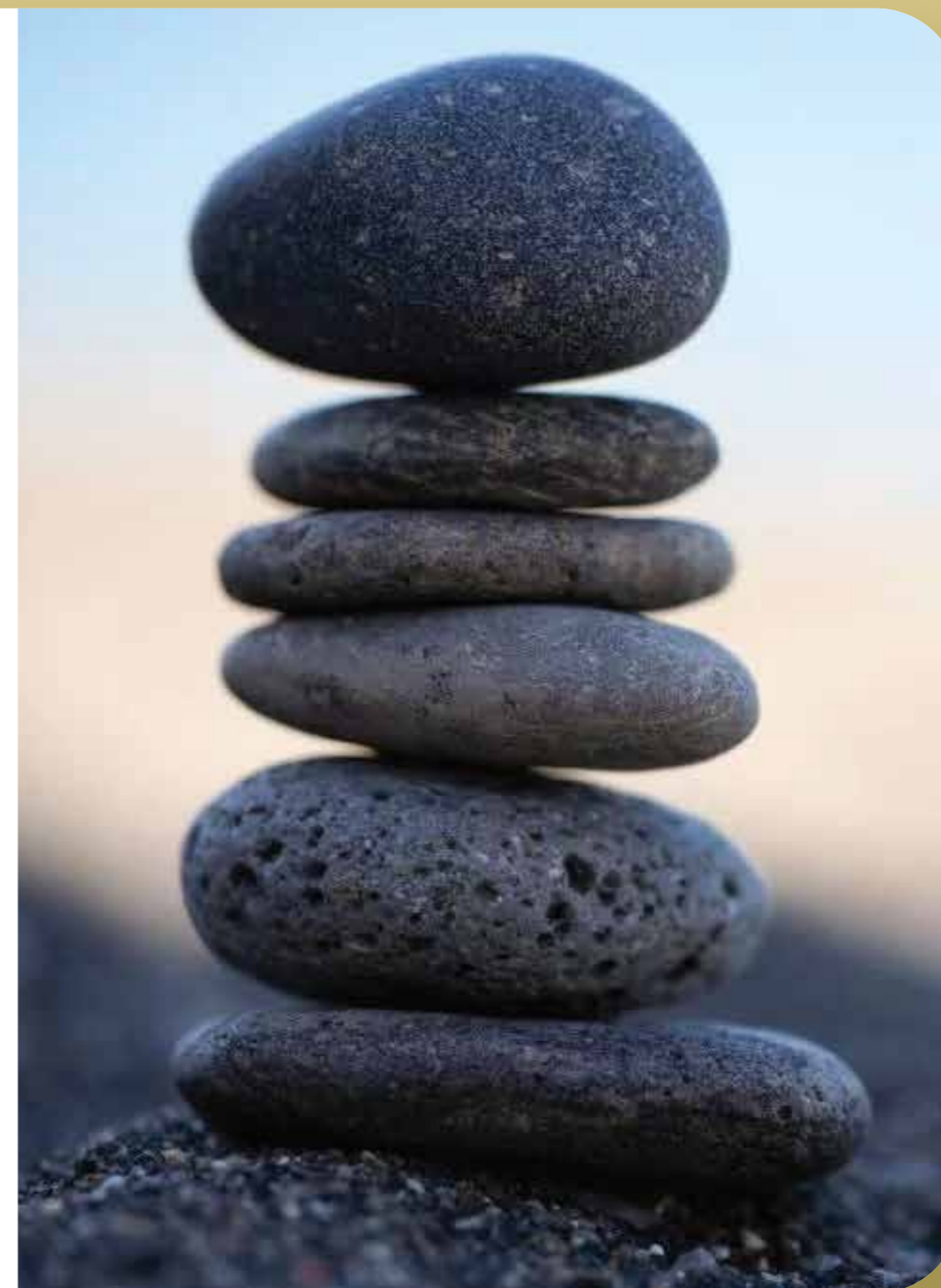
Mada'in Properties PJSC is deeply committed to sustainable development and has initiated several eco-friendly programs, including the integration of green building materials, energy-efficient designs, and waste reduction practices.

Protecting your investment

Investing in real estate is a straightforward and efficient endeavor when it is effectively managed. As an investor, your primary objective is to yield a profitable return on your investment while maintaining a streamlined and uncomplicated management process for your asset. Our dedicated team of asset managers is meticulously trained to approach your investment with the utmost care and diligence, adopting a perspective that mirrors their commitment as if the investment were their very own. This unwavering dedication ensures that your property is handled with the highest level of professionalism and expertise, providing you with peace of mind as you navigate the world of real estate investment.

Community engagement

We actively engage with local communities through various social responsibility initiatives, sponsorships, and partnerships with charitable organizations. Our commitment to community engagement reflects our belief in giving back to the communities that support our growth.



Future Plans

Mada'in Properties PJSC holds ambitious plans for future growth, including expanding our portfolio into new market segments, adopting emerging technologies, and perpetuating our commitment to delivering exceptional quality and sustainability in real estate development.



What Makes Us Unique

Mada'in Properties takes immense pride in what sets us apart our unrivaled commitment to uniqueness. We understand that real estate is not just about constructing buildings; it's about crafting spaces that are exceptional, distinctive, and memorable.

What makes us truly unique is our relentless pursuit of innovative design, our unyielding dedication to sustainability, and our unwavering commitment to making a positive impact in the communities where we operate.

Every project we undertake is a testament to our creativity, precision, and our ability to seamlessly blend aesthetics with functionality. We are not satisfied with the ordinary; we strive for the extraordinary.

Our team's expertise, combined with our keen understanding of market dynamics, ensures that each development bears the hallmark of excellence. When you choose us, you choose a partner who goes beyond bricks and mortar, creating enduring spaces that stand out in the industry for their elegance and distinctiveness. Unique by design, unique by choice that's what makes us the epitome of real estate innovation.



Mada'in Tower

We are honoured to introduce Mada'in Tower exclusively located at Dubai Marina.
This luxurious Tower has it's own characteristics where you feel the nature at your home.

Based between Al Khayay St and Al Sharta main road, this artpiece have view at Dubai Harbour Yacht Club, Dubai Media City, Palm Jumeirah, Sheikh Zayed Road and Emirates Golf Club.

PRIME LOCATIONS & DISTANCE



5 MINS

Dubai Marina Walk



2 MINS

Sheikh Zayed Road



150 Meters

Tram Station



7 MINS

Metro Station



400 Meters

Dubai Marina Yacht Moorage



10 MINS

Dubai Marina Mall



8 MINS

Palm Jumeirah



12 MINS

Ain Dubai & JBR



17 MINS

Burj Khalifa & Downtown Dubai



10 MINS

Emirates Mall



30 MINS

Dubai International Airport



25 MINS

Al Maktoum Airport



Mada'in Tower

Luxury apartments in Dubai Marina

With spectacular views Mada'in Tower is a paradigm of urban architecture and design, Every space is planned to perfection, with spectacular views of the surrounding neighbourhood

Unit types

Residence available in apartments

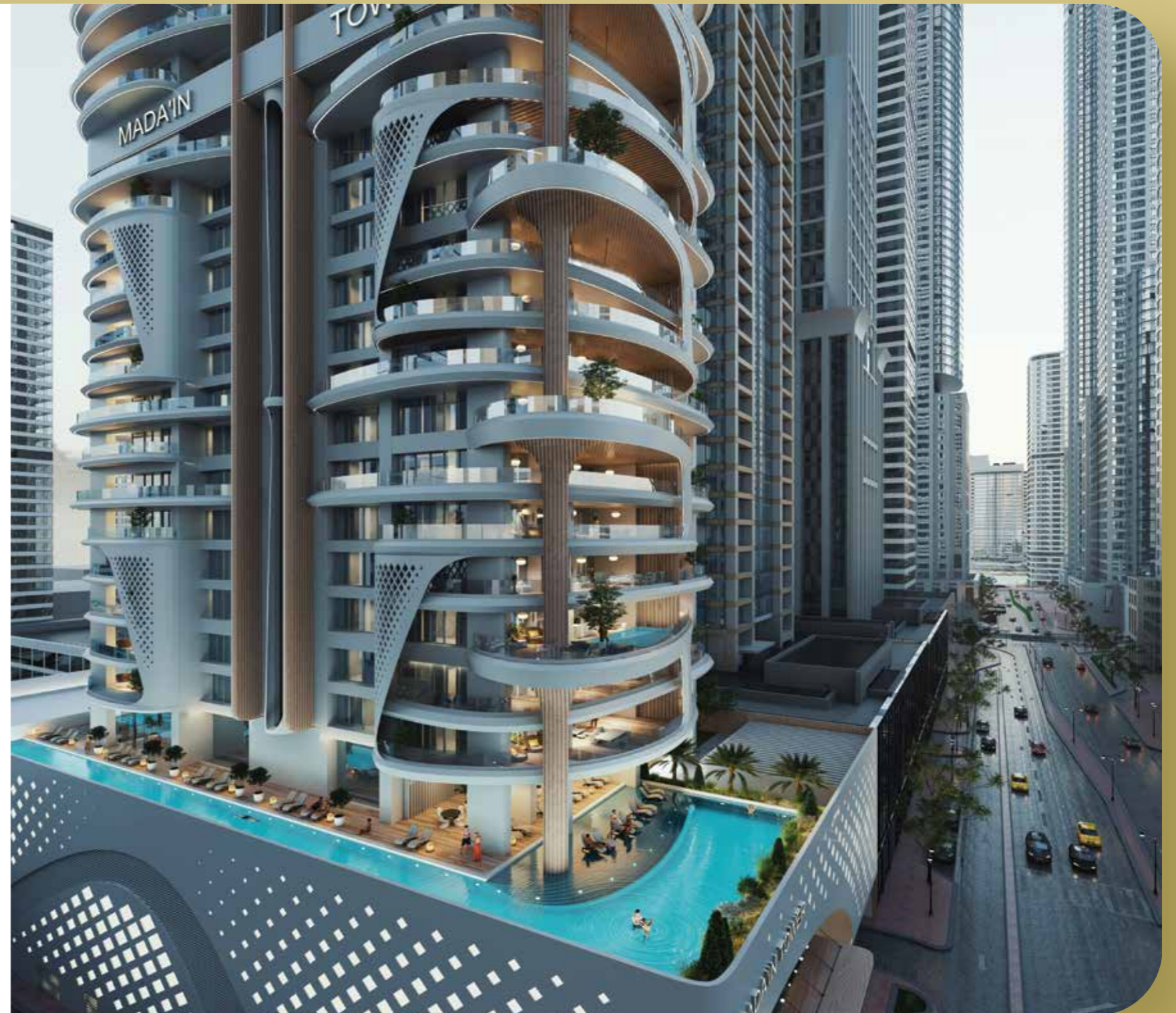
- 1 Bedroom
- 2 Bedroom
- Sky Villa Duplex 3 Bedroom
- Sky Villa Duplex 4 Bedroom
- Sky Mansion 5 Bedroom
- Sky Palace 7 Bedroom

Facilities

- Elegant lobby with reception desk
- Round-the-clock security
- Olympic size Swimming pool
- Gym
- Ample parking space (VIP & Valet Parking)
- Manicured landscaping

Location

- Dubai Marina



Madain Square

Luxurious Villas From Mada'in Properties

When it comes to experiencing the pinnacle of luxury living, Mada'in Properties has set the bar high with its exceptional offering in the heart of Sharjah - Mada'in Square.

Our villas are meticulously designed to provide the utmost in luxury living.

Unit types

- Reem Villa (4 Bedrooms)
- Reem Villa E (4 Bedrooms)
- Garden Villa (5 Bedrooms)
- Edge Villa (5 Bedrooms)
- Luxury Villa (6 Bedrooms)
- Signature Villa (6 Bedrooms)

Facilities

- Community Center
- Nursery
- Garden Areas
- Sport Amenities
- Playgrounds
- Family Gardens
- Mosque

Location

- Al Tay East, Sharjah



Madain Square

PRIME LOCATIONS & DISTANCE



2 MINS
Sharjah Mosque



20 MINS
Sharjah Airport



30 MINS
Dubai International Airport



10 MINS
Zero 6 Mall



3 MINS
Emirates Road



15 MINS
University of Sharjah



20 MINS
Al Zahia Mall



25 MINS
Burj Khalifa &
Downtown Dubai



20 MINS
Mohammed Bin Zayed Road



Marina Arcade

Marina Arcade a masterpiece that transcends architectural

Marina Arcade is strategically located on the famous on Al Naseem street across Dubai Media City which makes it accessible to the various public transport, The Dubai Tram (just minutes away) & The Dubai Metro. The exterior garden in our facilities area provides a tranquil setting to relax and madidate.

Unit types

- 1, 2, 3, and 4 bedrooms apartments
- Penthouse 3 bedrooms

Facilities

- Round-the-Clock Security
- Swimming Pool
- Sauna and Steam
- Gym (7,000 sq. ft.)
- Residential lounge
- Ample parking space (VIP & Valet Parking)
- 24/7 Hours Concierge

Location

- Dubai Marina



PRIME LOCATIONS & DISTANCE



5 MINS
Dubai Marina Walk



2 MINS
Sheikh Zayed Road



150 Meters
Tram Station



7 MINS
Metro Station



400 Meters
Dubai Marina Yacht Moorage



10 MINS
Dubai Marina Mall



8 MINS
Palm Jumeirah



12 MINS
Ain Dubai & JBR



17 MINS
Burj Khalifa & Downtown Dubai



10 MINS
Emirates Mall



30 MINS
Dubai International Airport



25 MINS
Al Maktoum Airport

MADA'IN

Properties

