

بن غاطي ايفوري  
BINGHATTI IVORY

*Project Facts*

An architectural rendering of the Binghatti Ivory residential complex. The scene is set at sunset, with a warm, golden light illuminating the sky and the buildings. The central focus is a tall, cylindrical tower with a grid-like facade of balconies and windows, many of which are lit from within. To its left is another tall building with a similar grid facade. To the right, there are several other high-rise buildings of varying heights and designs, some with balconies. The foreground is dominated by a dense line of palm trees and other greenery, with a road and some cars visible in the distance. The overall atmosphere is one of modern elegance and sophisticated urban living.

## *Binghatti Ivory*

Architectural elements, each echoing journeys and discoveries, create spaces of harmonious revelation and refined beauty. Ivory's façade, a testament to modern elegance, seamlessly blends enduring materials into a contemporary form.



## *Project Facts*

### PROPERTY TYPE

Residential & Retail

### PLOT AREA

3088.32 SQ.M / 33242.00 SQFT

### DESCRIPTION

2B + G + 3P + 20 Residential Floors + Roof

### NUMBER OF UNITS

Studio Apartment - 76

1 Bedroom Apartment - 177

2 Bedroom Apartment - 78

### TOTAL UNITS

Residential units - 331

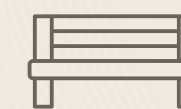
Shop (Ground Floor) - 01



## Amenities



Adults Pool  
with Pool Deck



Sunken  
Seating



Mini Golf



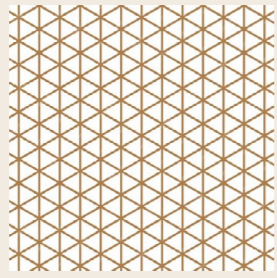
Kids Pool



Outdoor Seating  
Area

# Material Lists

## Lobby Materials



Metal Mesh



Travertine



Copper

## Apartment Materials



Wood Porcelain



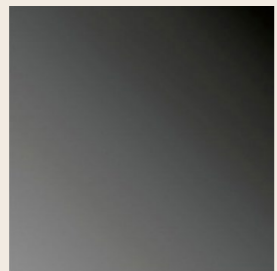
Brushed Brass



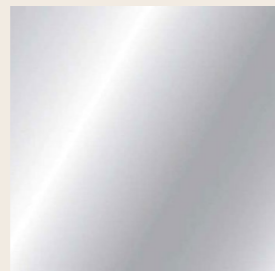
Tan Oak Wood



Corian



Black Tinted Glass



Mirror

## Bathroom Materials



Exotic Green Porcelain



Tan Oak Wood



Travertine



# Design Details

A showcase of meticulous craftsmanship and attention to detail. Ivory's crystalline glass facades capture the essence of modern heritage, shimmering against the Dubai skyline. Every element, from the selection of premium materials to the seamless blend of indoor and outdoor living, reflects a deep appreciation for the world beyond



## *Reimagined for the Intrepid Spirit*

Ivory is where refined living finds its boldest expression. Spacious apartments, world-class amenities, and a prime location converge to create an environment where new memories are forged and aspirations find their next adventure. It's a retreat where the pursuit of a memorable life, filled with discovery, is venerated.



# Embark on a Journey of Timeless Discovery

Step into a world where artistry and serenity converge, where every corner whispers of adventurous living, and where every moment is an opportunity to embrace the extraordinary. Ivory stands as a testament to a life lived in pursuit of grace, wonder, and the timeless spirit of discovery.







## *Price Range & Residential Unit Size*

### **Studio**

---

NUMBER OF UNITS

76

STARTING PRICE (AED)

888,888

AVERAGE OF TOTAL AREA

455.64 Sq.ft

MAX OF TOTAL AREA

473.07 Sq.ft





## *Price Range & Residential Unit Size*

### **1 Bedroom**

---

NUMBER OF UNITS

177

STARTING PRICE (AED)

1,299,999

AVERAGE OF TOTAL AREA

752.94 Sq.ft

MAX OF TOTAL AREA

919.99 Sq.ft





## *Price Range & Residential Unit Size*

### **2 Bedroom**

---

NUMBER OF UNITS

78

STARTING PRICE (AED)

1,999,999

AVERAGE OF TOTAL AREA

1,259.59 Sq.ft

MAX OF TOTAL AREA

1,460.02 Sq.ft