





CITY IN ITS
MOST NATURAL
FORM, NATURE
IN ITS MOST
URBANIZED
FORM





DEVELOPER OF THE PROJECTS
ENRICHING OUR COUNTRY



HEALTHY HOMES ARE NOW AT THE HEART OF THE CITY

- ❖ Health is once again in the spotlight of this project carried out by DAP Gayrimenkul Geliştirme, the creator of the Healthy Homes concept.
- ❖ DAP Gayrimenkul introduced the concept of Healthy Homes as a response to the pandemic-induced changes in our lives. All projects are created with this vision. Yeni Levent, designed based on the recommendations of the health board, is one of them.



FEEL THE FRESH BREEZES OF COUNTRY LIFE IN DOWNTOWN LEVENT

- ❖ The country lifestyle that we often associate with getting away from the city is now found in a downtown area for the first time in many years. Re-meet the architectural practice of low-rise buildings, enriched with natural elements. .
- ❖ As a ground-breaking company in the housing industry, DAP Gayrimenkul Geliştirme invites you to a green and natural life at the heart of Levent.



WHAT SHOULD A COUNTRY LIFE IN THE MIDDLE OF THE CITY OFFER?



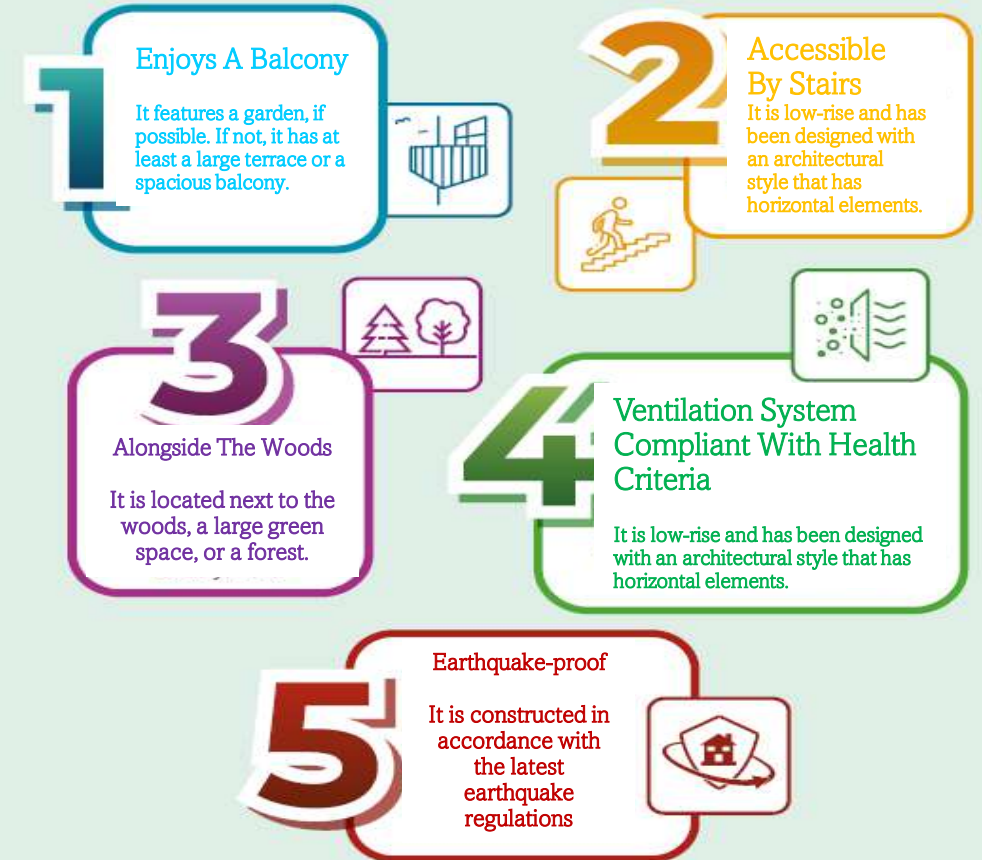
- 01 HEALTHY HOMES
- 02 A SELECT NEIGHBORHOOD IN THE CITY CENTER
- 03 A PERFECT COMBINATION OF CITY LIFE AND NATURE TOGETHER WITH ARTS, CULTURE, FASHION, AND ENTERTAINMENT
- 04 CLOSENESS TO MAIN BUSINESS AND COMMERCIAL AREAS
- 05 EVERYTHING YOU NEED WITHIN WALKING DISTANCE

1) Healthy Homes

They should be designed to satisfy the criteria of low-rise and healthy structures enhanced with natural elements and surrounded by greenery.



WHAT CONSTITUTES A HEALTHY HOME?



2) A Select Neighborhood in the City Center

Live in an indispensable part of the city with its rich history, cultural atmosphere, and privileges.



Levent Sports Park

3) A perfect combination of city life and nature together with arts, culture, fashion, and entertainment

Feel the refreshing spirit of nature on the one hand, and the city arts, culture, fashion, and entertainment on the other hand; switch between them freely as you please.



4) Closeness to central business and financial areas

Easily reach main business and commercial centers in the city.



5) Everything You Need within Walking Distance

Everything you are looking for is right next to you: business centers, artistic and cultural events, education, healthcare, shopping, entertainment, and much more both inside and outside of the building complex.



THE STORY OF LEVENT: THE APPLE OF ISTANBUL'S EYE

- ❖ The story of the Levent district dates back much further than most settlements in Istanbul.
- ❖ In the 1780s, the Sultan Abdulhamid I assigned the area located east of today's Büyükdere Street to Kaptan-ı Derya Cezayirli Hasan Pasha.
- ❖ Since the naval soldiers at that time were called "levend," people also started to refer to these lands as "Levend Farm."



AN EXEMPLARY URBANIZATION MODEL: LEVENT

- ❖ In 1949, the municipality transferred the 100-hectare land of Levent Farm to Emlak Bankası for housing construction.
- ❖ The aim was to create living spaces with modern infrastructure.
- ❖ Consequently, the neighborhood witnessed the rise of new buildings and areas such as bazaars, schools, mosques, and community health centers.



A LIFESTYLE INSPIRED BY LONDON

- ❖ The country movement in the city emerged in the capital of England, and the wave quickly spread around the world. The glorious Istanbul was also one of the stops of this new concept of life.
- ❖ The Levent region served as one of the first models of this approach in Istanbul.



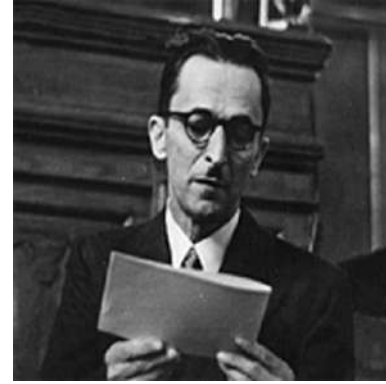
HALF A CENTURY OLD 35,000 TREES

- ❖ Designed by architects Kemal Ahmet Aru and Rebii Gorbon, the project was built in the following order: 1. Levent in 1950, 2. Levent in 1951, 3. Levent in 1952-53, and 4. Levent in 1956-57. Moreover, 35,000 adult trees were planted during the construction.
- ❖ About 30,000 of these trees are still in the Levent area.



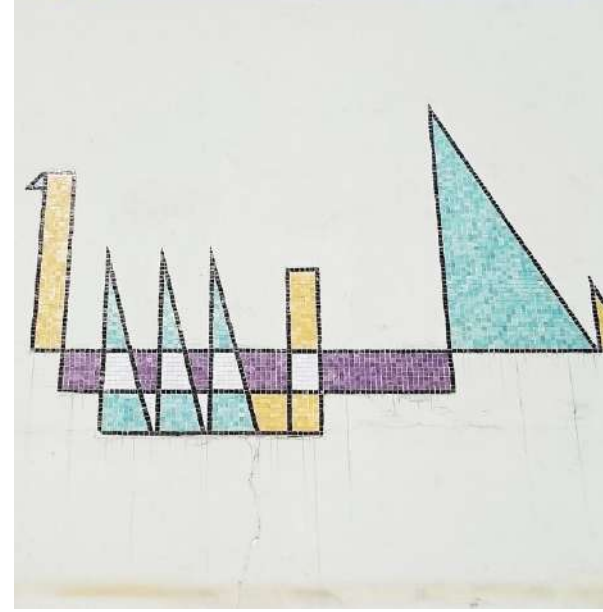
CELEBRITIES OF LEVENT

- ❖ Since the foundation years, many prominent writers, artists, and scientists was born or lived in Levent.
- ❖ Many well-known names such as Turgay Şeren, Cüneyt Arkın, Zeki Müren, Türkan Şoray and Reşat Nuri Güntekin preferred this region to live. The street that features the house of the great author Reşat Nuri Güntekin is located right next to the Levent bazaar and was named Çalığışu after his famous novel.
- ❖ Nowadays, Levent has been again the choice of many famous artists.



TURKEY'S FIRST EXAMPLES OF PUBLIC ART: LEVENT MOSAICS

- ❖ The prominent artists Nurullah Berk, Sabri Berkel, Eren Eyübođlu, Bedri Rahmi Eyübođlu, Ercüment Kalmık and Ferruh Başađa engraved more than 20 large-scale mosaics on the facades of buildings in Levent.
- ❖ Levent presents the first public art examples from the modern era in Turkey.



THE RISE OF BUSINESS LIFE

- ❖ The relocation of the Istanbul Stock Exchange (ISE) to the region in 1995 accelerated the shift of all prominent financial institutions and banks, who wished to be close to the ISE, to the Zincirlikuyu-Maslak-Büyükdere axis.
- ❖ After becoming an international financial center, this axis has also begun to host examples of luxury high-rise residences, shopping centers, and plazas in the 2000s.



THE TRANSFORMATION OF LEVENT INTO AN ART CENTER

- ❖ Large spaces previously used as garages and vehicle repair shops in Levent were transformed into art galleries and centers.
- ❖ You can experience all the dynamics of urban life by being just a step away from the city's best art events that take place in famous art galleries.
- ❖ Fuu Art Work, Adas Art Center, Summart Art Center, Kultural Performing Arts... All these centers invite you to the colorful world of art and entertainment with their monthly renewed programs.





NEIGHBOR TO A WOODED AREA OF 50,000 M²

There is a wooded area of about 50,000 m² located nearby Yeni Levent, which also accommodates a school. Enjoy your time in a safe, green space of 50,000 square meters, do yoga or pilates in the morning in tranquility, take walks on paths adorned with flowers, and read your book in the resting areas in the middle of nature.



YENİ LEVENT OFFERS GREEN AREAS AS LARGE AS THREE SOCCER FIELDS

- ❖ Taking a walk and exercising among the trees in the landscaping area of Yeni Levent, which is as large as three soccer fields, will help you refresh physically and mentally.





BUYUKDERE STREET

- ❖ The headquarters of banks, business centers, and most of the skyscrapers are on this street.
- ❖ The bustling Büyükdere street offers a distinctive glimpse into the economic and social life of its residents.
- ❖ Büyükdere Street, one of the most important axes of Turkey, is located just 1500 meter from the Yeni Levent project.

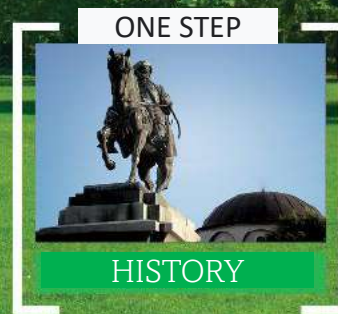
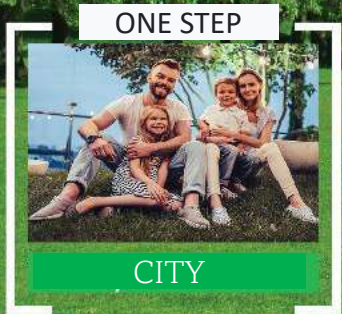
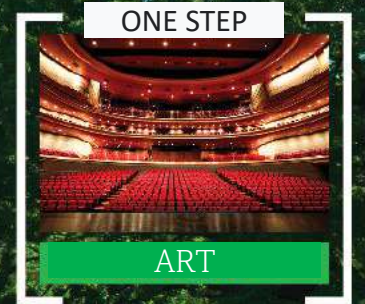
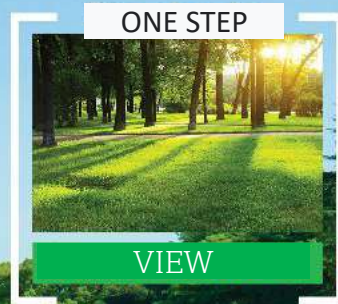


THE MOST PRESTIGIOUS SHOPPING MALLS OF ISTANBUL ARE JUST AROUND THE CORNER

- ❖ Levent, one of the most central locations in the city, is the intersection point of Istanbul's most prestigious shopping malls from Istinye Park to Zorlu.
- ❖ All city amenities are within striking distance in Yeni Levent, where you are close to the lively spots in the city but also away from the crowd.



Country life is now at the heart of Levent, where you are only **ONE STEP AWAY** from everything you want.



CITY IN ONE STEP

Everything is within Striking Distance of Levent

Fatih Sultan Mehmet Bridge	7 minutes
Büyükdere Street	2 minutes
İstanbul Technical University	7 minutes
Kanyon Shopping Center	4 minutes
Zorlu Center	6 minutes
İstinye Park	5 minutes
Vadistanbul Shopping Center	6 minutes
Levent Bazaar	2 minutes
Belgrad Forest	8 minutes
Atatürk City Forest	7 minutes
Göktürk Nature Park	6 minutes
Atatürk Arboretum	7 minutes
Emirgan Park	6 minutes
Etiler Park	4 minutes
Bebek Park	7 minutes



FOOD JUST AROUND THE CORNER

Live Nearby the Best Restaurants in the City

- ❖ Discover the world-renowned cafes and restaurants in the region and taste gourmet food from famous chefs.
- ❖ Exquisite nearby restaurants such as Sans Restaurant, Sunset, Serafina, Papermoon, Da Mario, Venge, La Scarpetta, Nusret, 29, Villa Emma, where you can enjoy a variety of flavors, are accompanied by the most delicious recipes from all over the world and distinguished cafes.



ART AND ENTERTAINMENT JUST AROUND THE CORNER

Every Day is Full of Art and Culture Events

- ❖ You can experience all the dynamics of urban life by being just a step away from the best art events in the city.
- ❖ Concerts, exhibitions, theaters, galas, and more...
- ❖ Is Sanat Kultur Center and Zorlu PSM, located right next to you, bring you all the colors of art and entertainment with their monthly renewed programs.



FASHION JUST AROUND THE CORNER

The World's Most Prestigious Brands Are Just One Step Away

- ❖ You will hear the footsteps of fashion closely in Yeni Levent, where you will be within walking distance of the city's most popular shopping malls, stores, and concept boutiques of artists.
- ❖ Prestigious brands and the latest trends in fashion are now within striking distance.



NATURE AND BEAUTIFUL SCENERY JUST AROUND THE CORNER

All the Greens of the City
Are on Your Doorstep

- ❖ Enjoy the lush green landscaping of the Yeni Levent area, which offers a view of the Belgrade Forest as far as the eye can see, or easily reach the Ataturk City Forest, the Fatih Forest, or the Belgrade Forest, and feel the rejuvenating power of the forest deep in your soul.



BELGRAD FOREST

- ❖ Lead a healthy life with birds chirping in the morning as you exercise in the Belgrade Forest or the building complex, and breathe in the fresh air right at the center of the city, but away from all the hustle and bustle..



ATATURK CITY FOREST

- ❖ You can easily access the Fatih Forest Nature Park and Ataturk City Forest from Yeni Levent and revel in the harmony of all forest colors while rejuvenating your mind and spirit.
- ❖ Beware! You can come across a deer and gazelle here at any time.



FATİH FOREST

- ❖ There are 200 species of birds in the Belgrade Forest and Fatih Forest, easily accessible from Yeni Levent.
- ❖ This forest area is one of the most important routes of migratory birds as 800,000 birds pass through this region every year.
- ❖ Witness the migration of storks and wild geese, while listening to the enchanting sound of finches.



TERRACES WITH VILLA COMFORT

❖ Fill your lungs with clean air from the Belgrade Forest and get an energy boost in the morning while enjoying your Terrace Villa equipped with apartment-sized terraces.



GARDEN LIFE WITH VILLA COMFORT

❖ Play with your children freely in a house with an exclusive garden that offers the comfort of a villa.



A GREEN BELT AT THE HEART OF LEVENT

- ❖ A Green Belt draws an invisible line to protect nature from the negative effect of city life.
- ❖ The natural lifeline created around the Yeni Levent project allows you to stay away from the noise, stress, and traffic even though you are in the middle of the city while enjoying nature with your loved ones.



THERE'S NOTHING LIKE WORKING OUT WITH BIRDS CHATTERING

- ❖ Everything has been thought through just for you to feel good here. Your days will be happier than ever before in the midst of a lush green wood and a lively landscape. You will be able to easily reach your home from your workplace and unwind after a stressful day with birds chirping in the background in this wonderful world.



VITAMIN GARDENS

- ❖ Keep your immune system healthy throughout the year by consuming a variety of seasonal and fresh fruits from the vitamin gardens in the Yeni Levent.



HAPPY AND HEALTHY CHILDREN

- ❖ Being a child in Yeni Levent means playing, jumping, and rolling on the lush grass and feeling the soil through your fingers.
- ❖ Children witness how fruits and vegetables grow in real gardens as they learn best through engaging in the living world rather than looking at phone screens.
- ❖ This living space full of fruit trees, flowers, birds, and squirrels, will also do your child a power of good.









SUBWAY RIGHT NEXT TO YOU

- ❖ Yeni Levent offers you everything you need within walking distance or you can easily take a subway from the nearby station and avoid the traffic.

























































