



فرهاد عزيزي
FARHAD AZIZI
RESIDENCE

RESIDENTIAL BUILDING

Basement

Parking

Ground Floor

Parking +Retail

2 Parking Floors

Parking

17 Floors

1st Residential + Pools +Terraces

2nd to 12th Residential (Layout 1)

13th Residential (Layout 2)

14th Residential (Layout 3)

15th Residential (Layout 4)

16th Residential (Layout 5)

17th Residential (Layout 6)

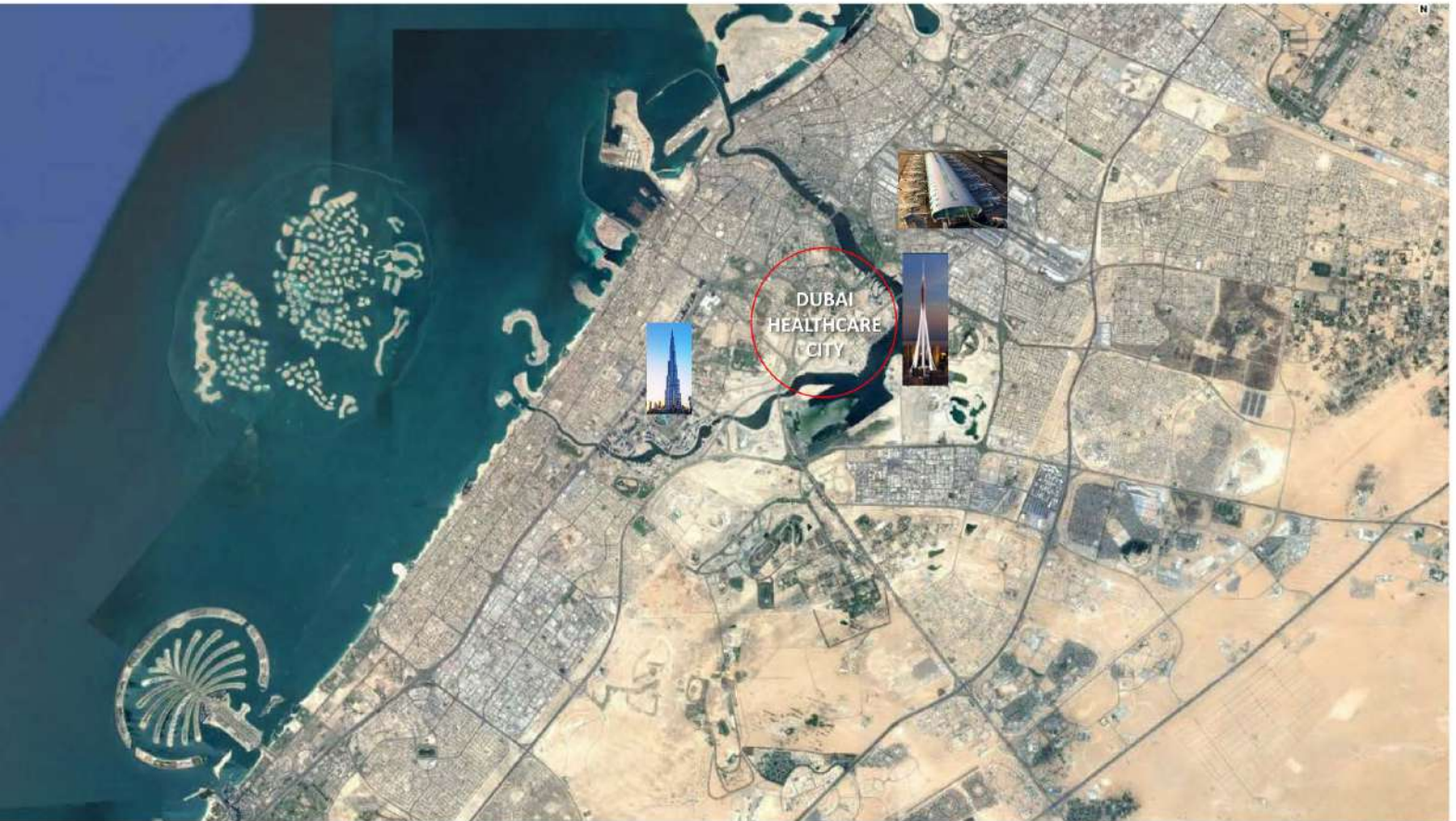
Roof (No roof garden)

Notes:

Service charge ----- AED per square feet

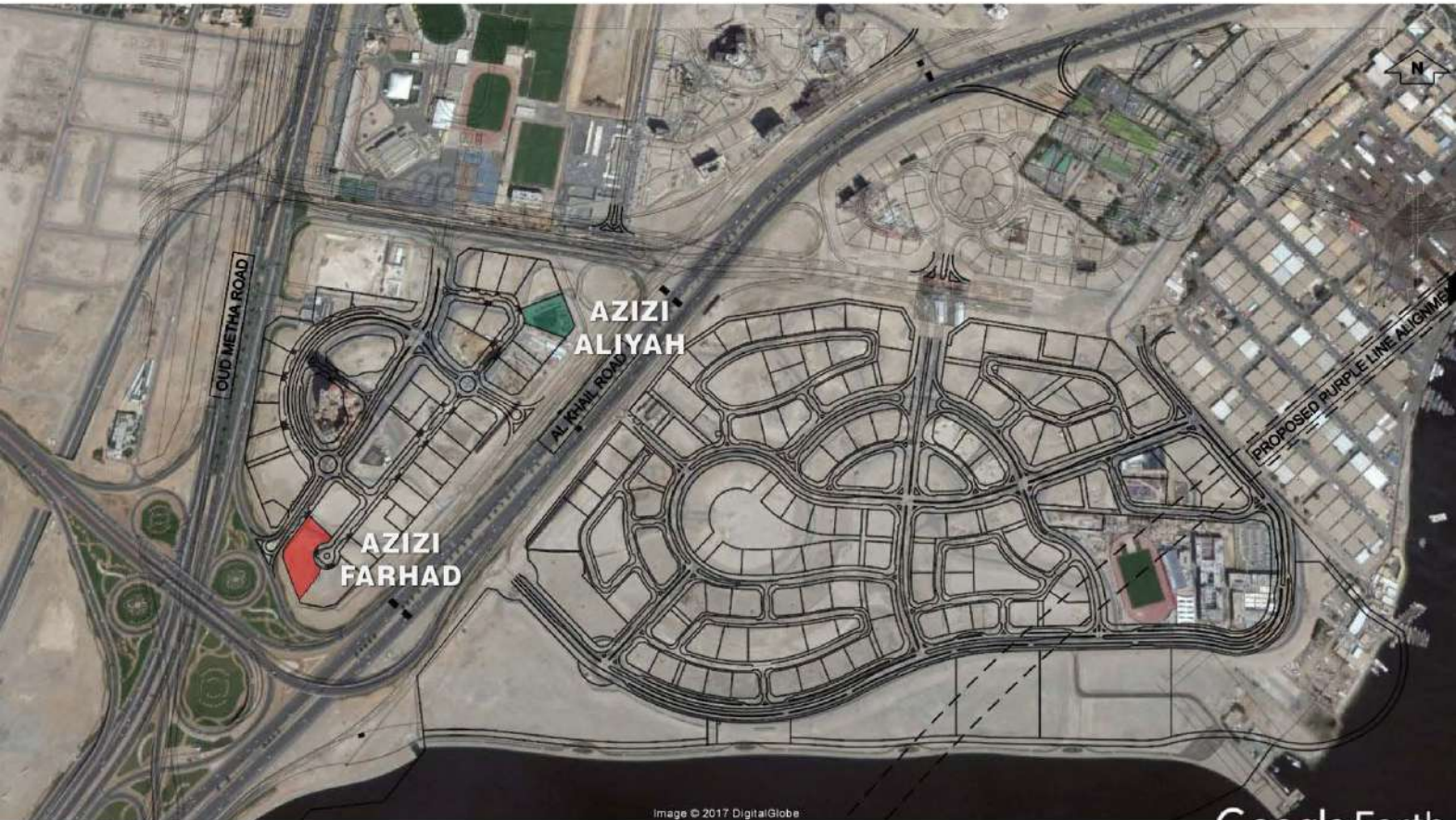
District cooling





DUBAI
HEALTHCARE
CITY





OLD METHA ROAD

AZIZI ALIYAH

AL KHAIL ROAD

AZIZI FARHAD

PROPOSED PURPLE LINE ALIGNMENT



LOUD MEITHA ROAD

ZA'ABEEL ROAD

ALKHAIL ROAD

GREEK

**MARRIOTT
ALJADDAF**

**AZIZI
FARHAD**

**BURJ KHALIFA
VIEW**

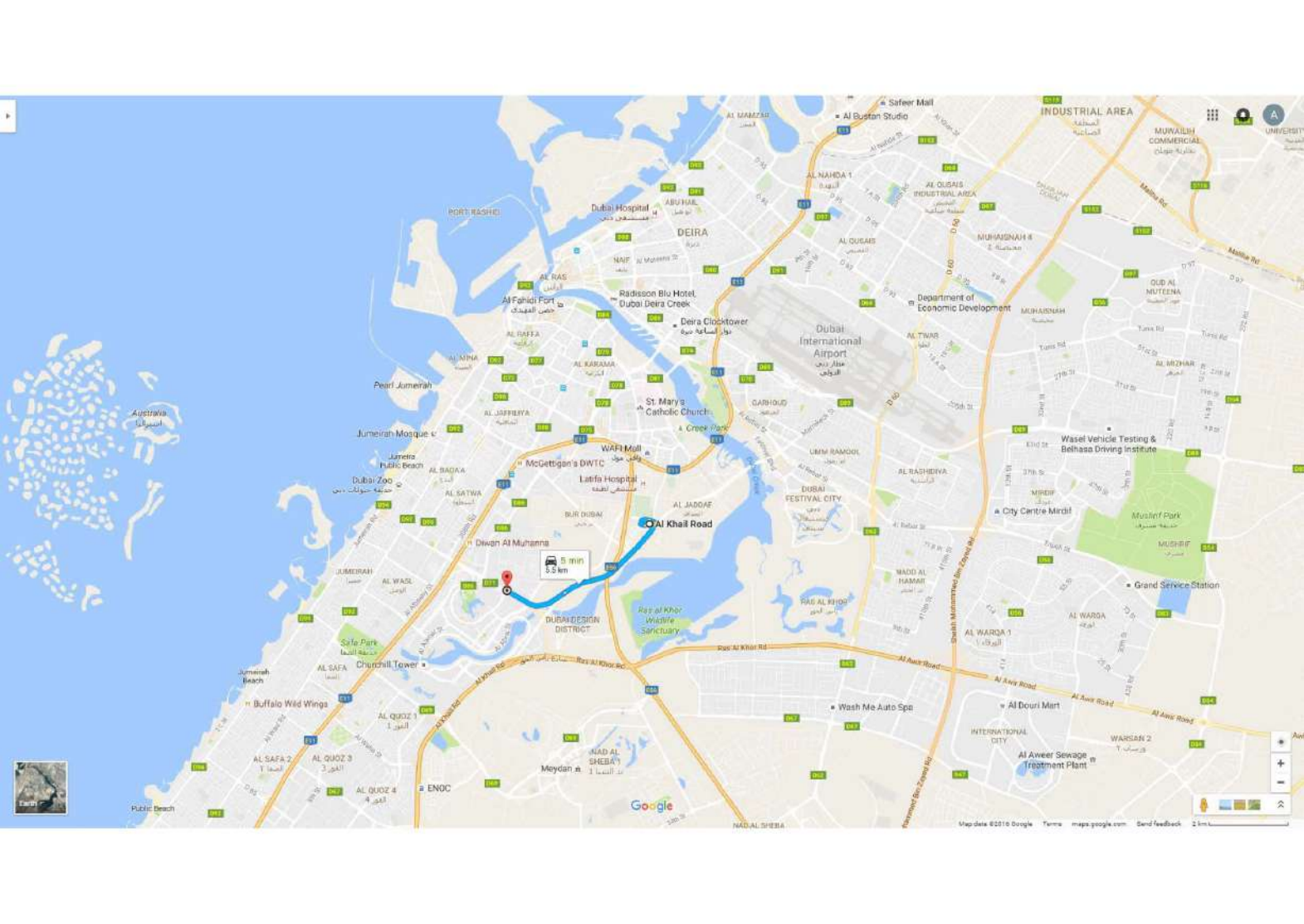
POOL VIEW



ALKHAIL ROAD

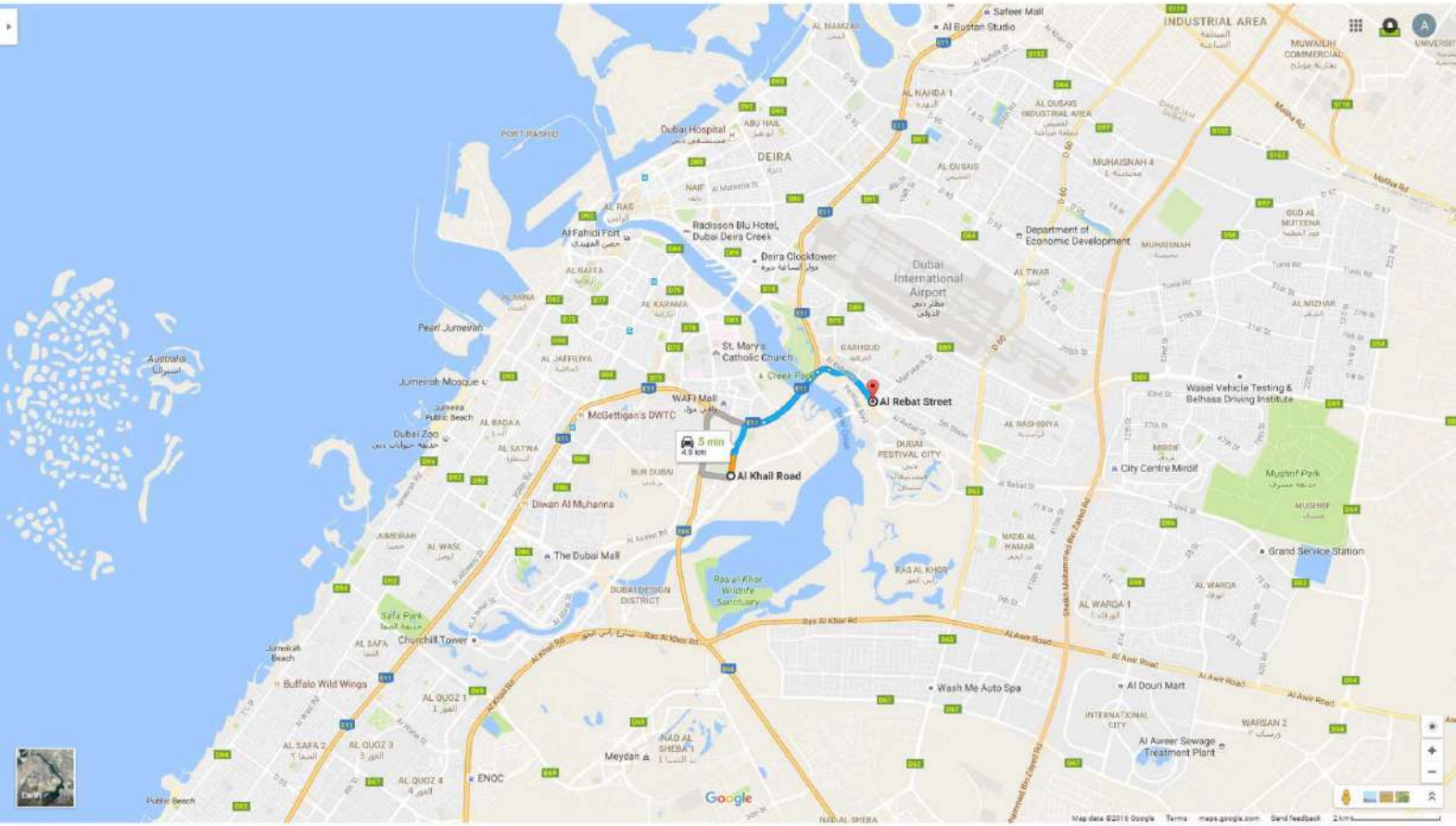
GREEK & GREEK TOWER VIEW





Google

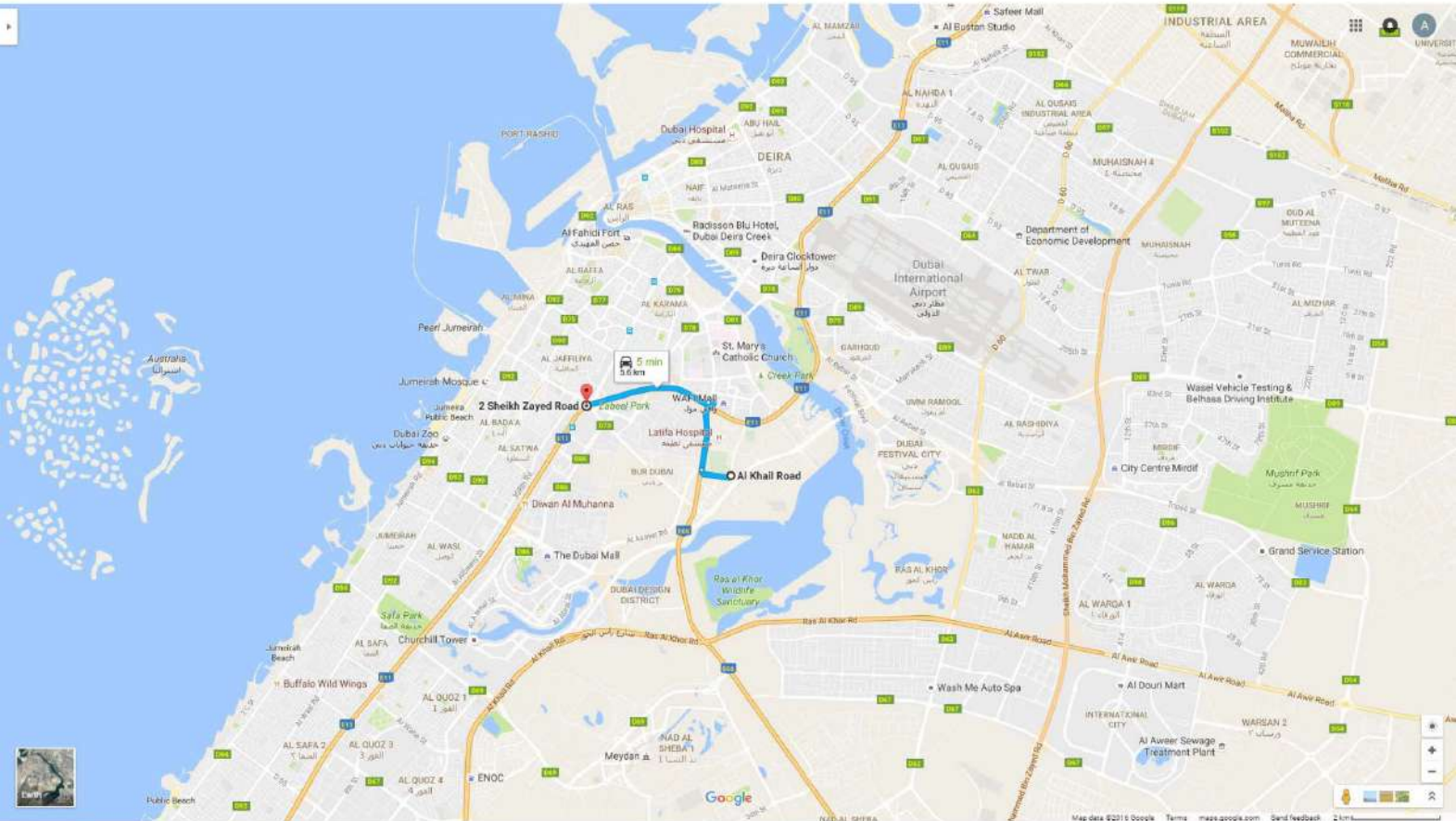


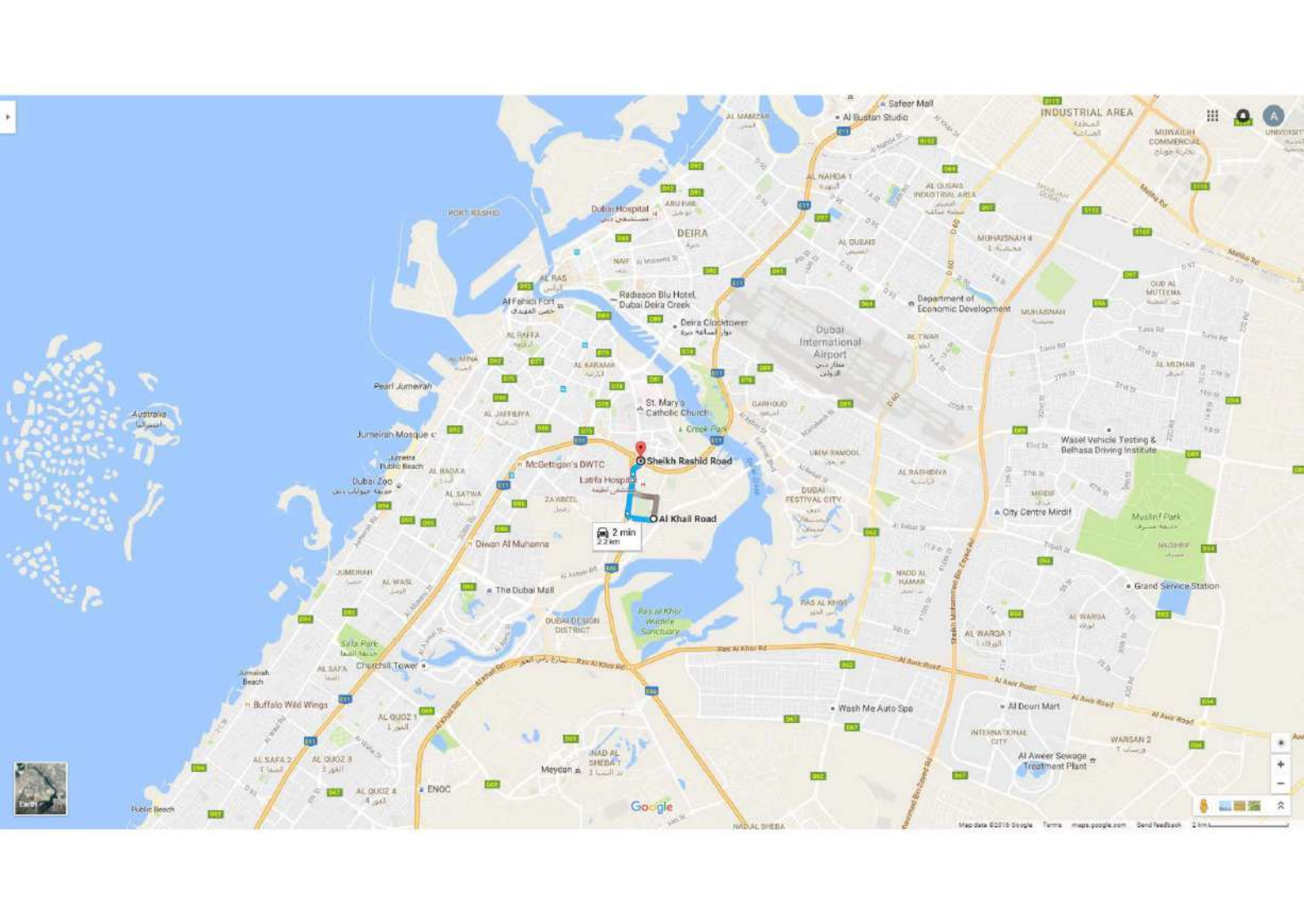


5 min
4.8 km

Al Khail Road

Al Rebat Street





2 min
2.2 km



Al Khail Road

Sheikh Rashid Road



St. Mary's Catholic Church

Deira Clocktower

Radisson Blu Hotel, Dubai Deira Creek

DEIRA

Dubai Hospital

AL RAS

AL RAFFA

AL KARVANA

AL JAFFILIYA

AL MINA

AL RAS

AL RAS

AL RAS

AL RAS

AL RAS

AL RAS

AL RAS

AL RAS

AL RAS

AL RAS

AL RAS

AL RAS

AL RAS

AL RAS

AL RAS

AL RAS

AL RAS

AL RAS

AL RAS

AL RAS

AL RAS

AL RAS

AL RAS

AL RAS

AL RAS

AL RAS

AL RAS

AL RAS

AL RAS

AL RAS

AL RAS

AL RAS

AL RAS

AL RAS

AL RAS

AL RAS

AL RAS

AL RAS

AL RAS

AL RAS

AL RAS

AL RAS

AL RAS

AL RAS

AL RAS

AL RAS

AL RAS

AL RAS

AL RAS

AL RAS

AL RAS

AL RAS

AL RAS

AL RAS

AL RAS

AL RAS

AL RAS

AL RAS

AL RAS

AL RAS

AL RAS

AL RAS

AL RAS

AL RAS

AL RAS

AL RAS

AL RAS

AL RAS

AL RAS

AL RAS

AL RAS

AL RAS

AL RAS

AL RAS

AL RAS

AL RAS

AL RAS

AL RAS

AL RAS

AL RAS

AL RAS

AL RAS

AL RAS

AL RAS

AL RAS

AL RAS

AL RAS

AL RAS

AL RAS

AL RAS

AL RAS

AL RAS

AL RAS

AL RAS

AL RAS

AL RAS

AL RAS

AL RAS

AL RAS

AL RAS

AL RAS

AL RAS

AL RAS

AL RAS

AL RAS

AL RAS

AL RAS

AL RAS

AL RAS

AL RAS

AL RAS

AL RAS

AL RAS

AL RAS

AL RAS

AL RAS

AL RAS

AL RAS

AL RAS

AL RAS

AL RAS

AL RAS

AL RAS

AL RAS

AL RAS

AL RAS

AL RAS

AL RAS

AL RAS

AL RAS

AL RAS

AL RAS

AL RAS

AL RAS

AL RAS

AL RAS

AL RAS

AL RAS

AL RAS

AL RAS

AL RAS

AL RAS

AL RAS

AL RAS

AL RAS

AL RAS

AL RAS

AL RAS

AL RAS

AL RAS

AL RAS

AL RAS

AL RAS

AL RAS

AL RAS

AL RAS

AL RAS

AL RAS

AL RAS

AL RAS

AL RAS

AL RAS

AL RAS

AL RAS

AL RAS

AL RAS

AL RAS

AL RAS

AL RAS

AL RAS

AL RAS

AL RAS

AL RAS

AL RAS

AL RAS

AL RAS

AL RAS

AL RAS

AL RAS

AL RAS

AL RAS

AL RAS

AL RAS

AL RAS

AL RAS

AL RAS

AL RAS

AL RAS

AL RAS

AL RAS

AL RAS

AL RAS

AL RAS

AL RAS

AL RAS

AL RAS

AL RAS

AL RAS

AL RAS

AL RAS

AL RAS

AL RAS

AL RAS

AL RAS

AL RAS

AL RAS

AL RAS

AL RAS

AL RAS

AL RAS

AL RAS

AL RAS

AL RAS

AL RAS

AL RAS

AL RAS

AL RAS

AL RAS

AL RAS

AL RAS

AL RAS

AL RAS

AL RAS

AL RAS

AL RAS

AL RAS

AL RAS

AL RAS

AL RAS

AL RAS

AL RAS

AL RAS

AL RAS

AL RAS

AL RAS

AL RAS

AL RAS

AL RAS

AL RAS

AL RAS

AL RAS

AL RAS

AL RAS

AL RAS

AL RAS

AL RAS

AL RAS

AL RAS

AL RAS

AL RAS

AL RAS

AL RAS

AL RAS

AL RAS

AL RAS

AL RAS

AL RAS

AL RAS

AL RAS

AL RAS

AL RAS

AL RAS

AL RAS

AL RAS

AL RAS

AL RAS

AL RAS

AL RAS

AL RAS

AL RAS

AL RAS

AL RAS

AL RAS

AL RAS

AL RAS

AL RAS

AL RAS

AL RAS

AL RAS

AL RAS

AL RAS

AL RAS

AL RAS

AL RAS

AL RAS

AL RAS

AL RAS

AL RAS

AL RAS

AL RAS

AL RAS

AL RAS

AL RAS

AL RAS

AL RAS

AL RAS

AL RAS

AL RAS

AL RAS



















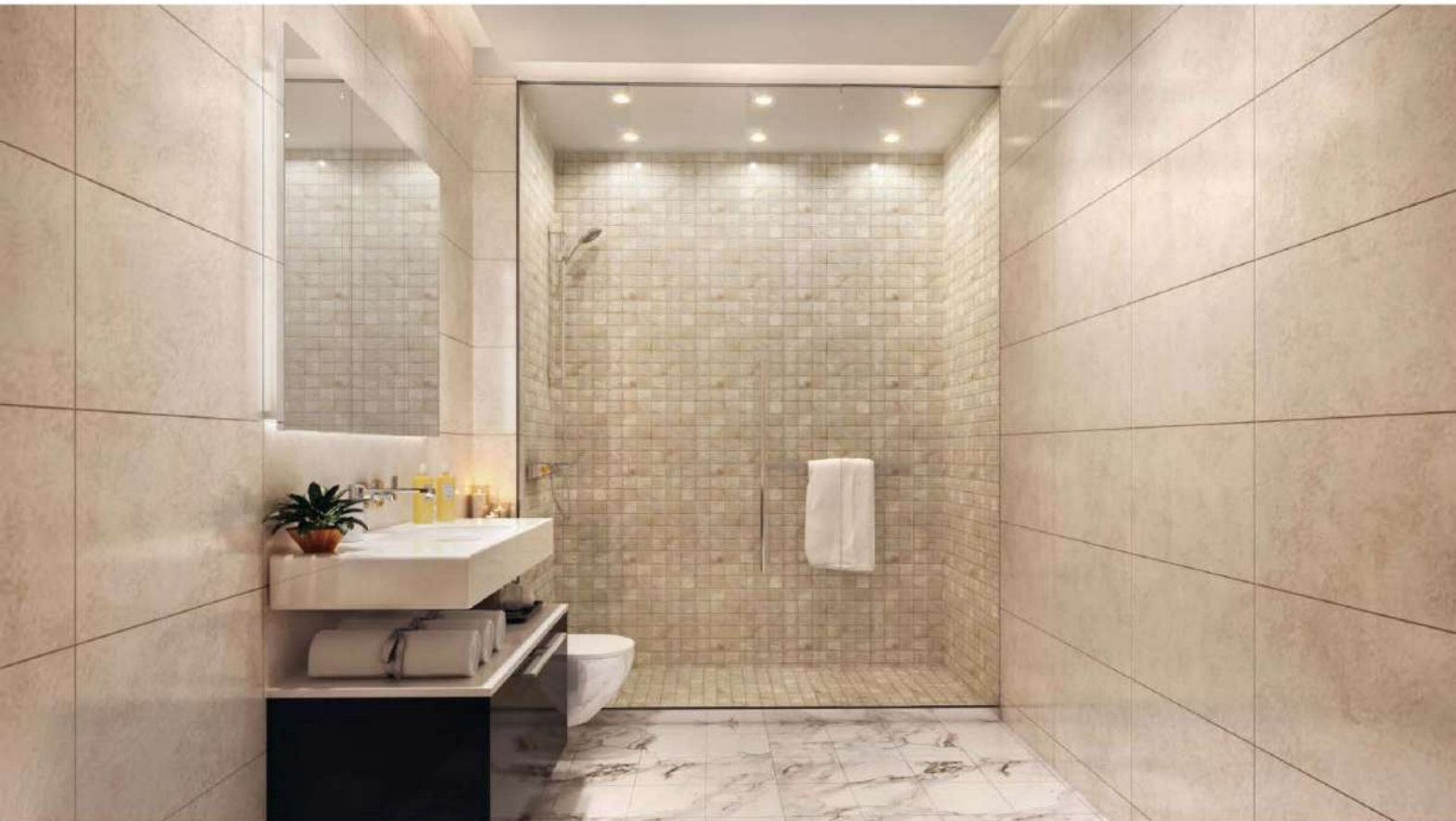














Unit Mix

396 studio apartments from 312 ft² to 544 ft²

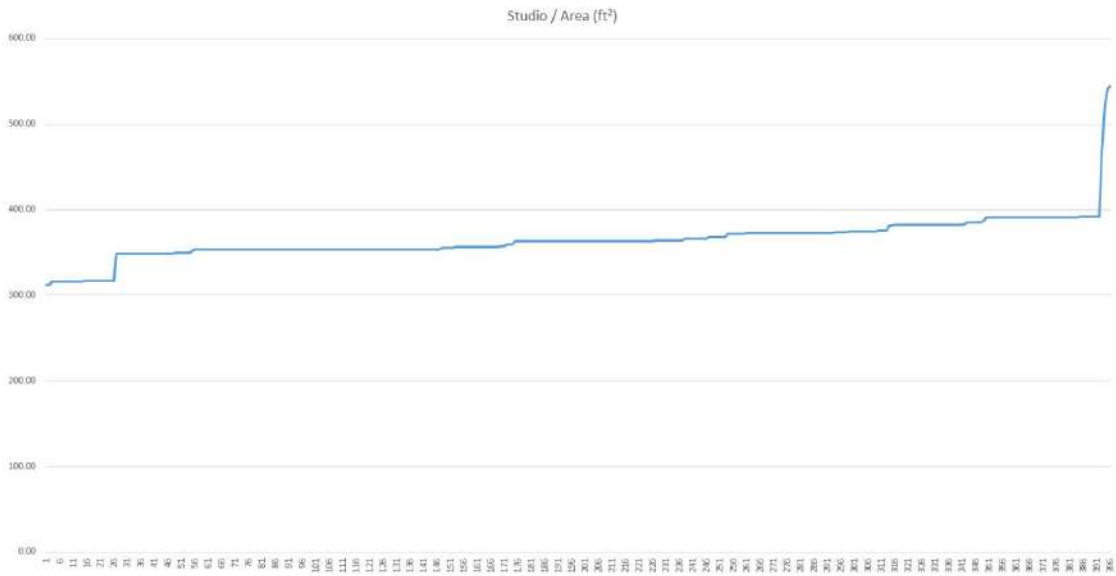
218 one bedroom apartments from 577 ft² to 1770 ft²

20 Two bedroom apartments from 1070 ft² to 2052 ft²

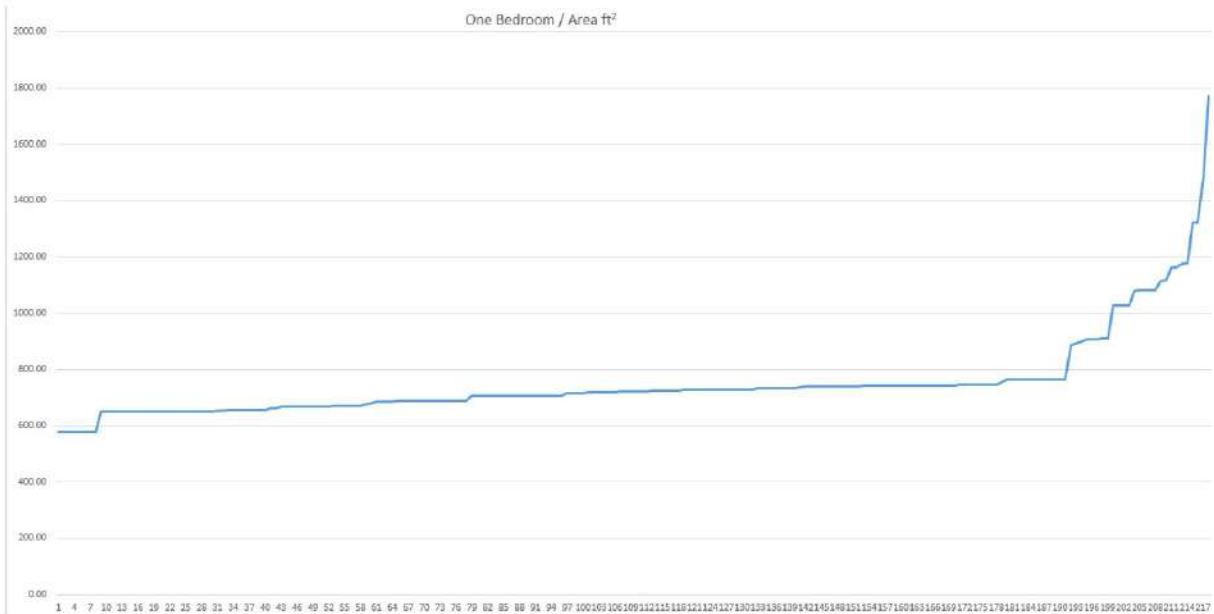
Furniture

Optional.

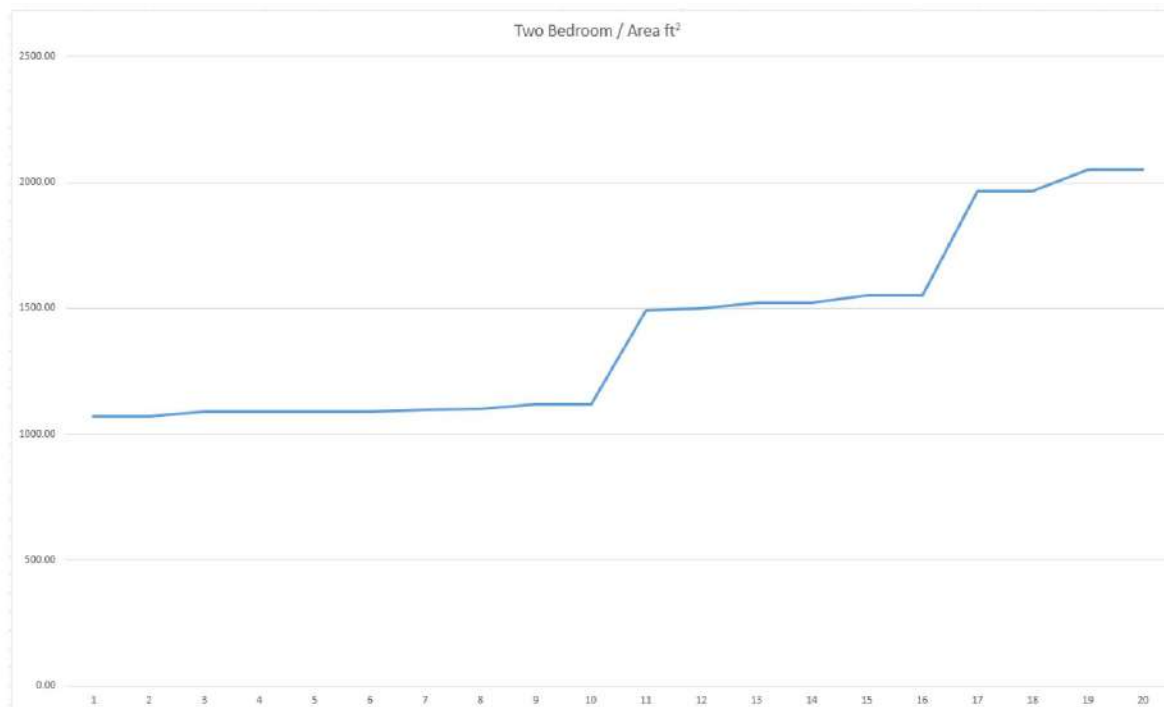
APARTMENTS				
TYPE/FLOOR	STUDIO	ONE BEDROOM	TWO BEDROOM	TOTAL
1ST FLOOR	4	21	0	25.00
2ND FLOOR	27	12	0	39
3RD TO 12TH FLOOR	280	130	10	420
13TH FLOOR	23	12	2	37
14TH FLOOR	19	12	2	33
15TH FLOOR	15	12	2	29
16TH FLOOR	15	10	2	27
17TH FLOOR	13	9	2	24
TOTAL	396	218	20	634



396 studio apartments from 312 ft² to 544 ft²



218 one bedroom apartments from 577 ft² to 1770 ft²



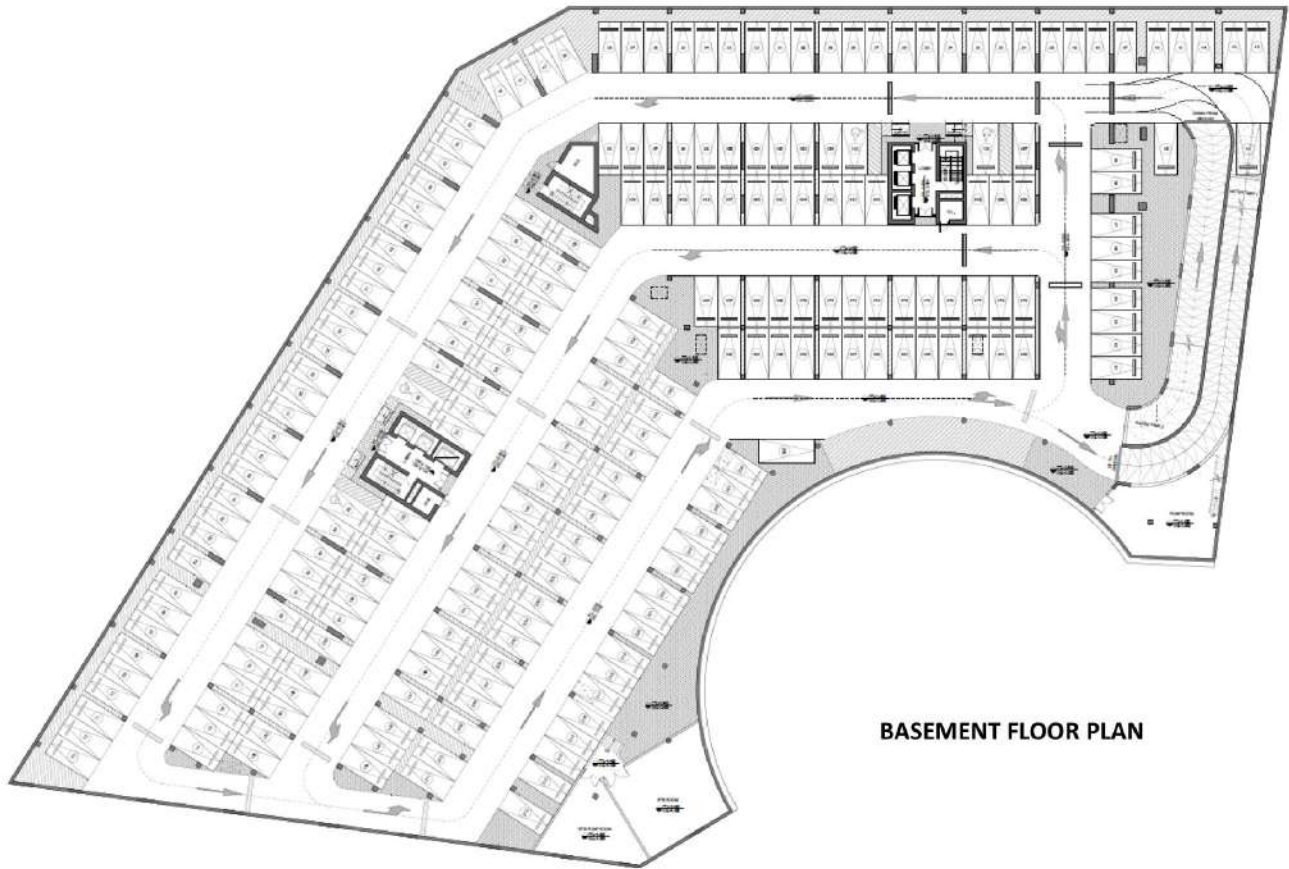
20 Twobedroom apartments from 1070 ft² to 2052 ft²

Amenities & Services

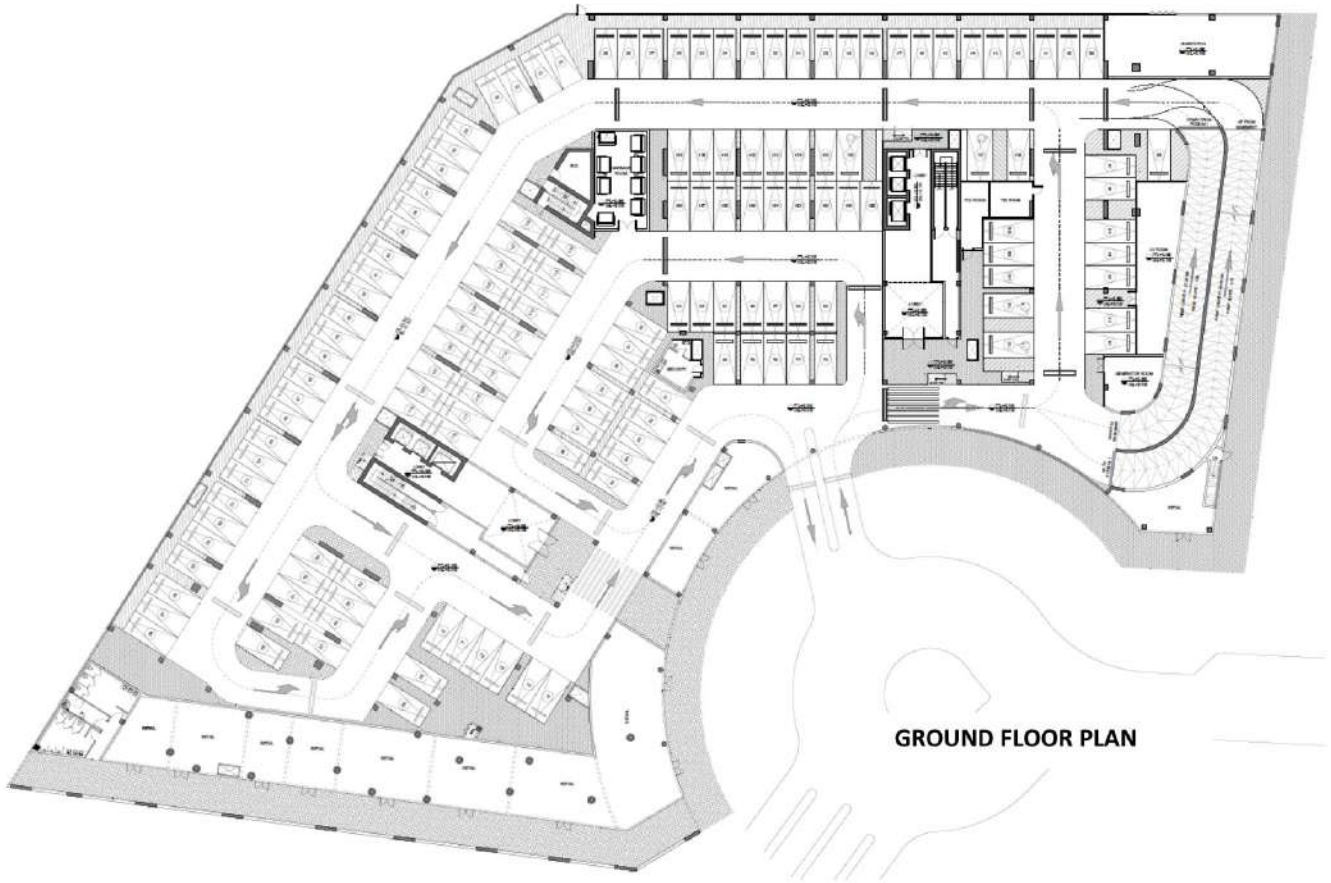
- Landscaped gardens
- Gymnasium
- Sauna
- Swimming pool
- Kids swimming pool
- Kids play area
- Jogging track
- Basketball playground
- Retail areas
- Covered parking.
- 6 Large Lifts

Unit Features:

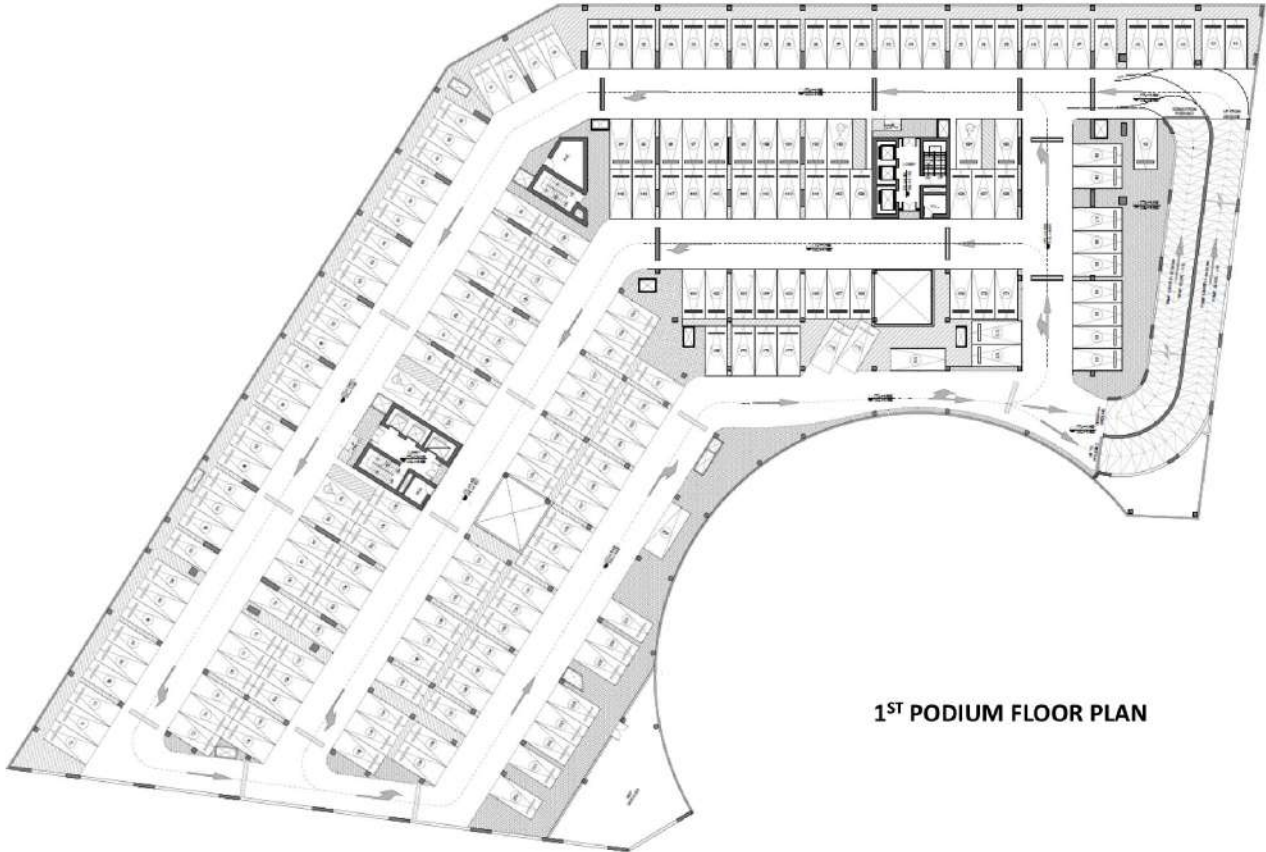
- Kitchen cabinets and countertops with refrigerator, washing machine & cooker.
- Balconies as per unit plan.
- Wardrobes in bedrooms.
- Fully tiled bathrooms, en-suites and guest toilets, wherever applicable
- Shower or bath tub with handle and shower in each bathroom.
- Vanity Units and mirrors
- Centrally air conditioned
- Double glazed windows
- DU television and telephone connections
- Satellite master antenna "SMATV connection "
- Provision for High speed internet access "Fiber optic connection "
- Ceramic floor tiling



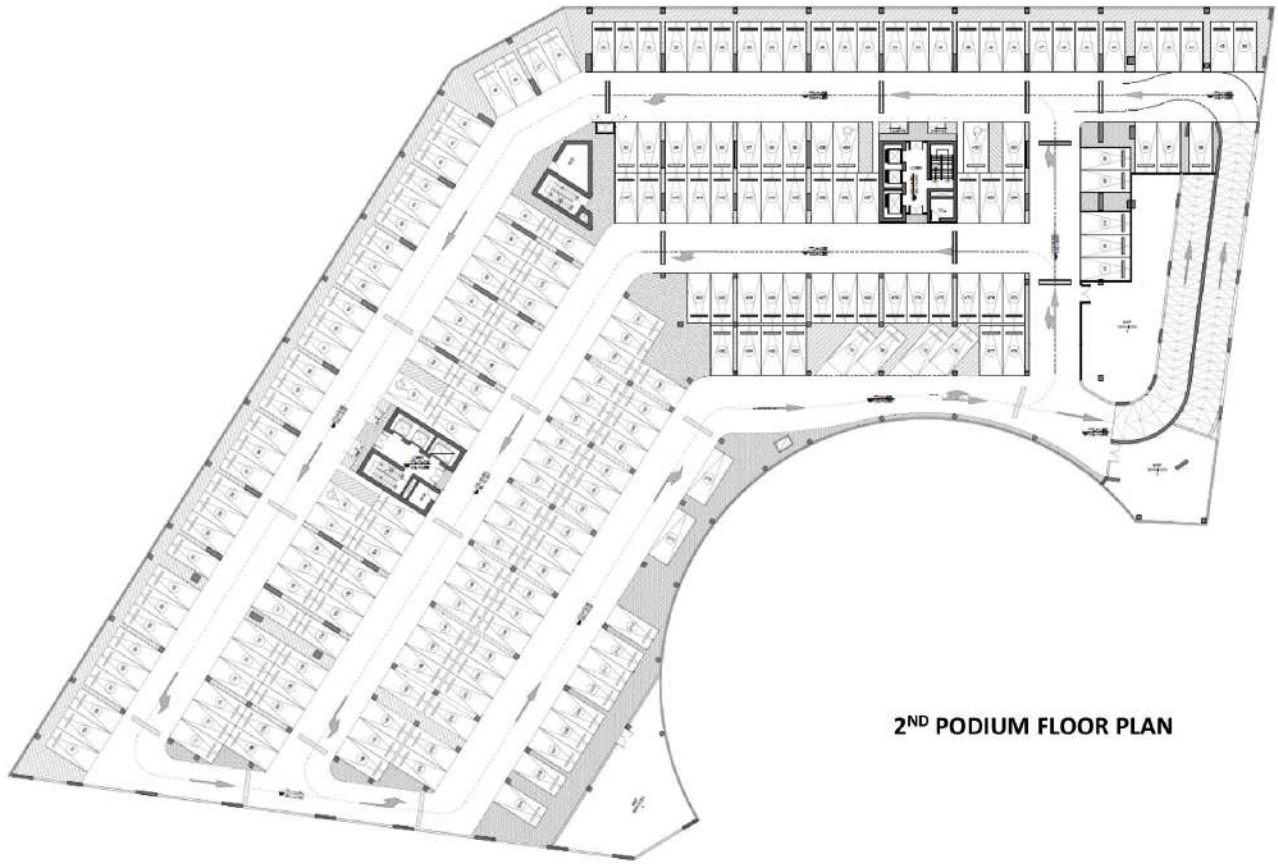
BASEMENT FLOOR PLAN



GROUND FLOOR PLAN



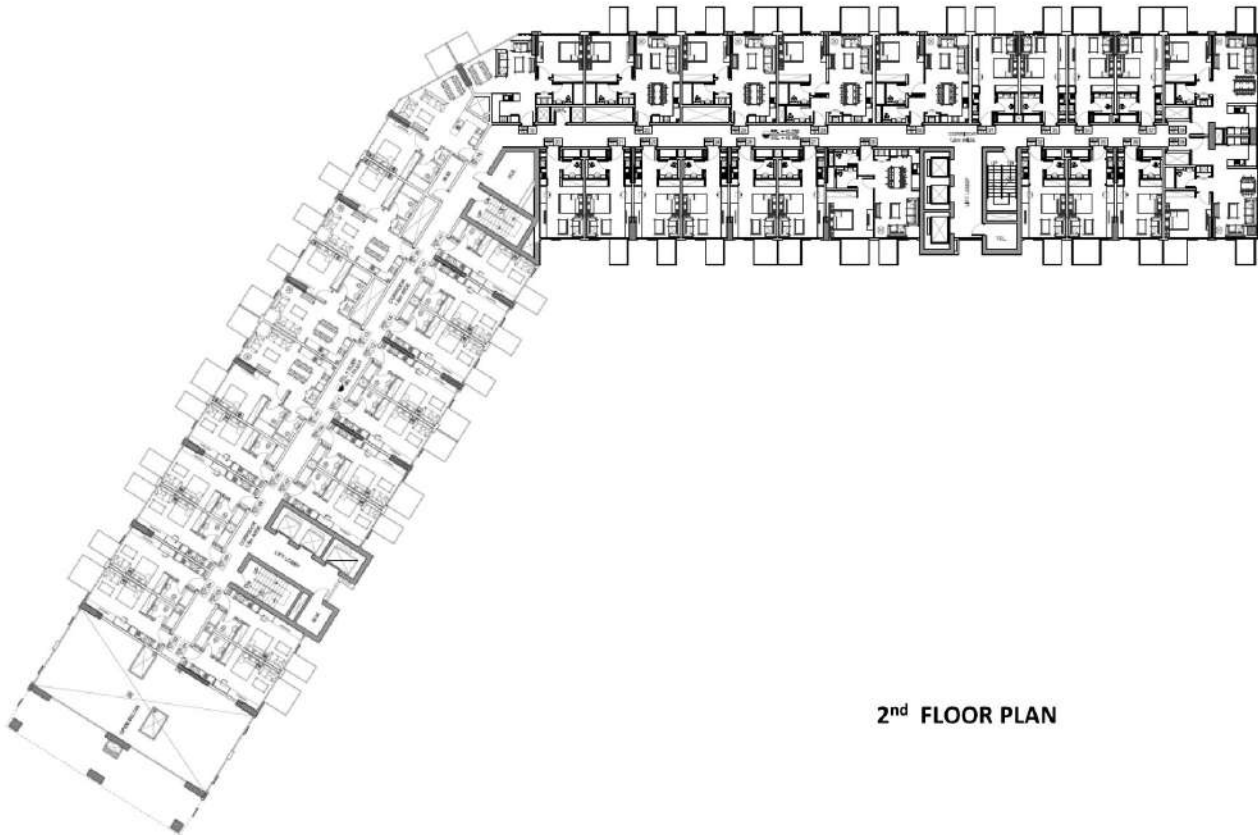
1ST PODIUM FLOOR PLAN



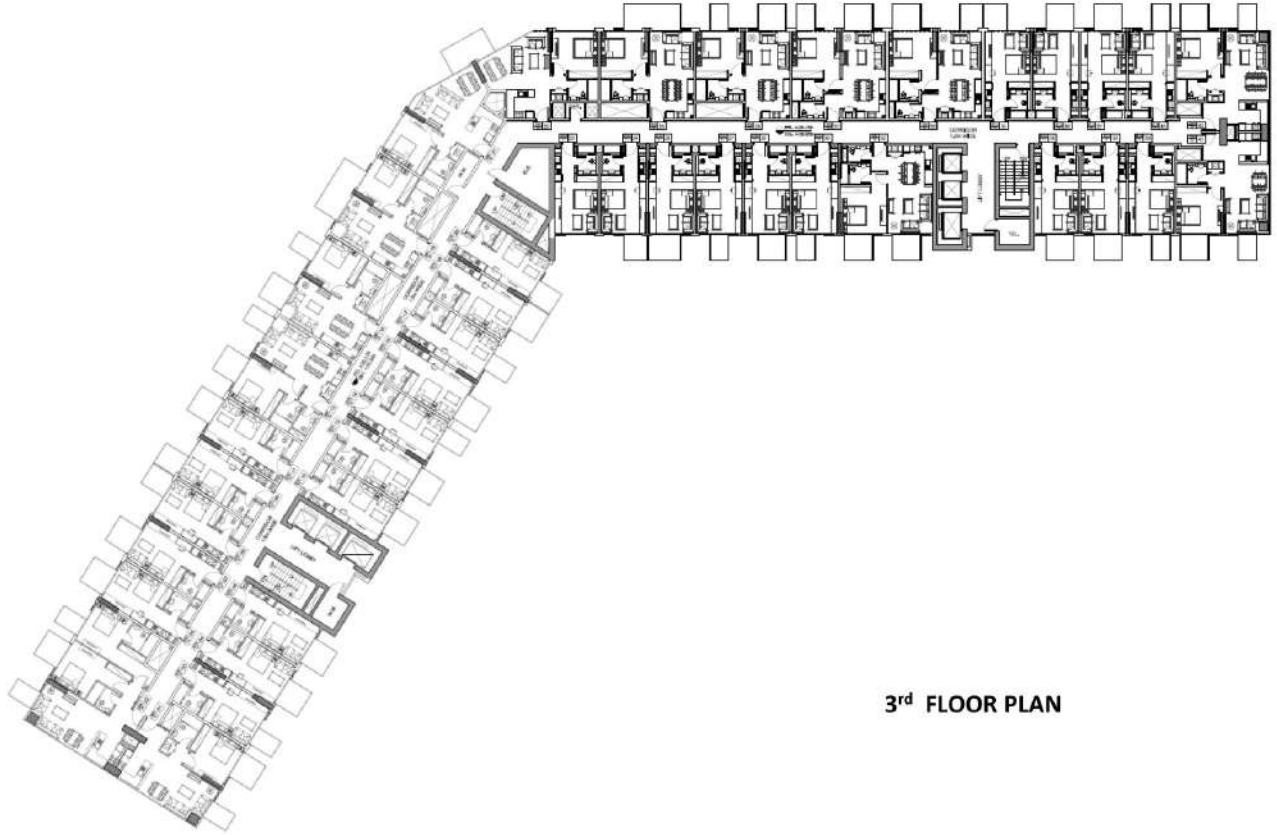
2ND PODIUM FLOOR PLAN



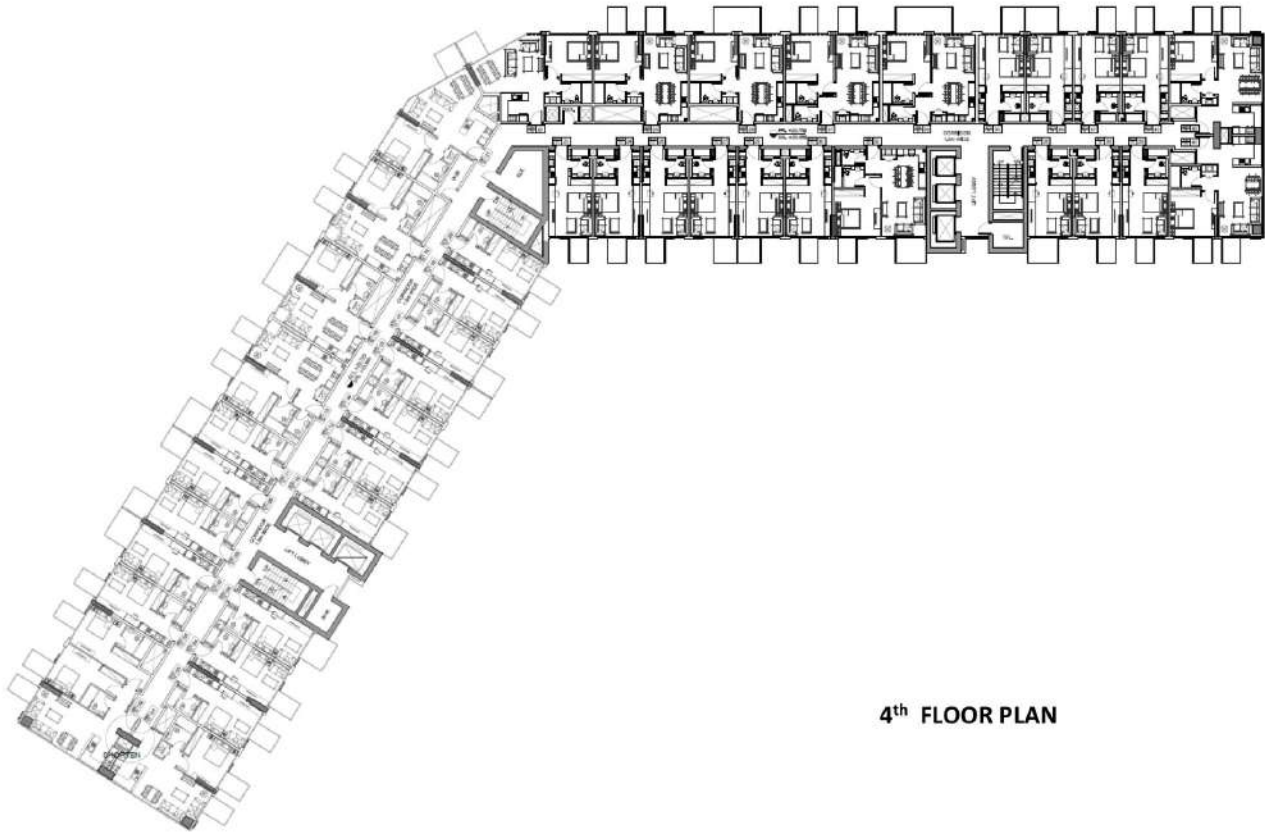
1st FLOOR PLAN



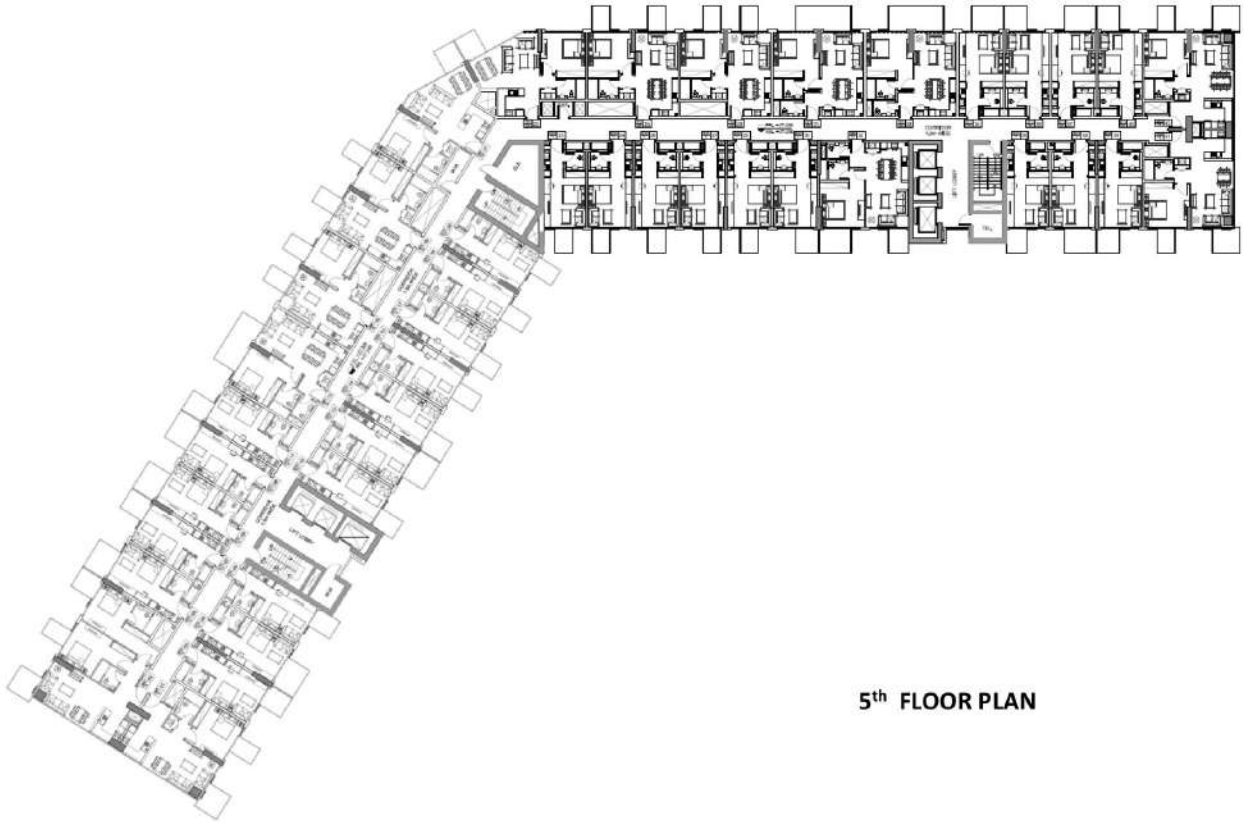
2nd FLOOR PLAN



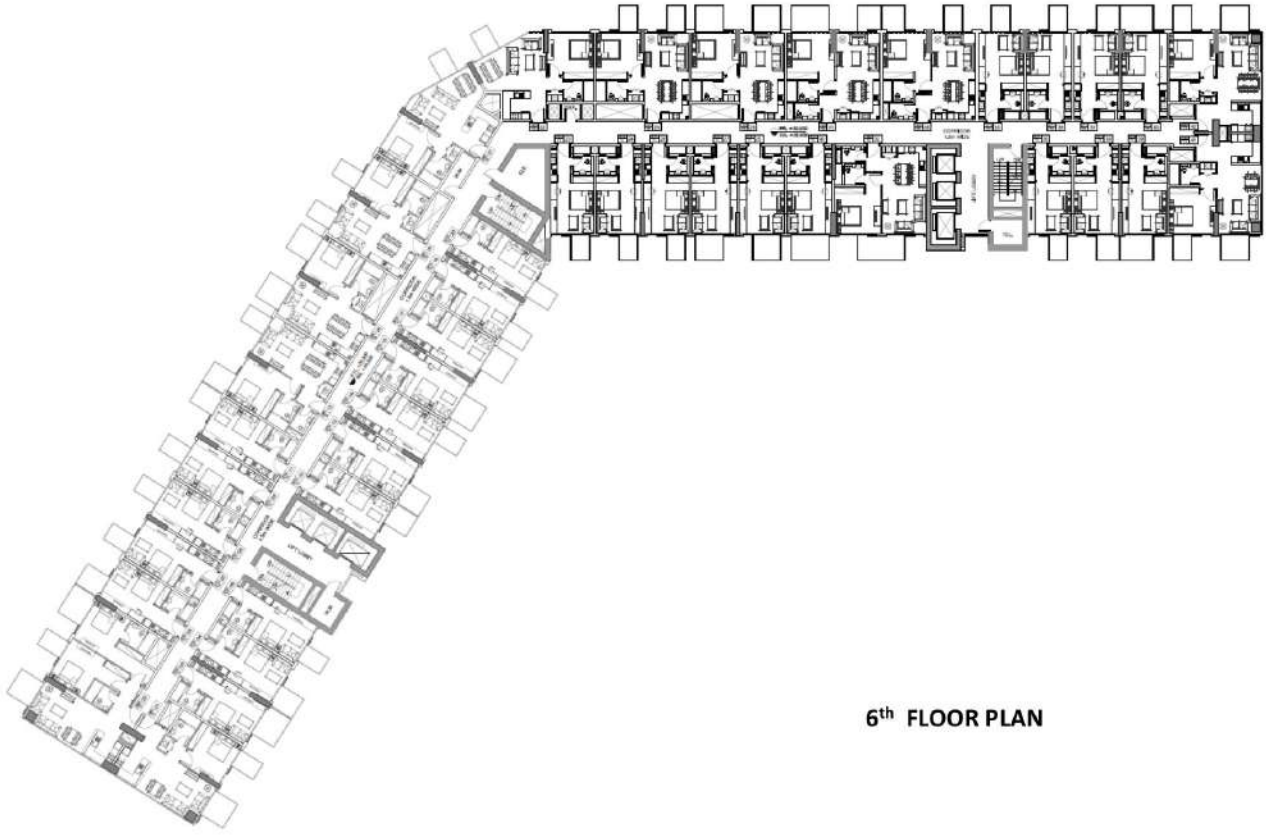
3rd FLOOR PLAN



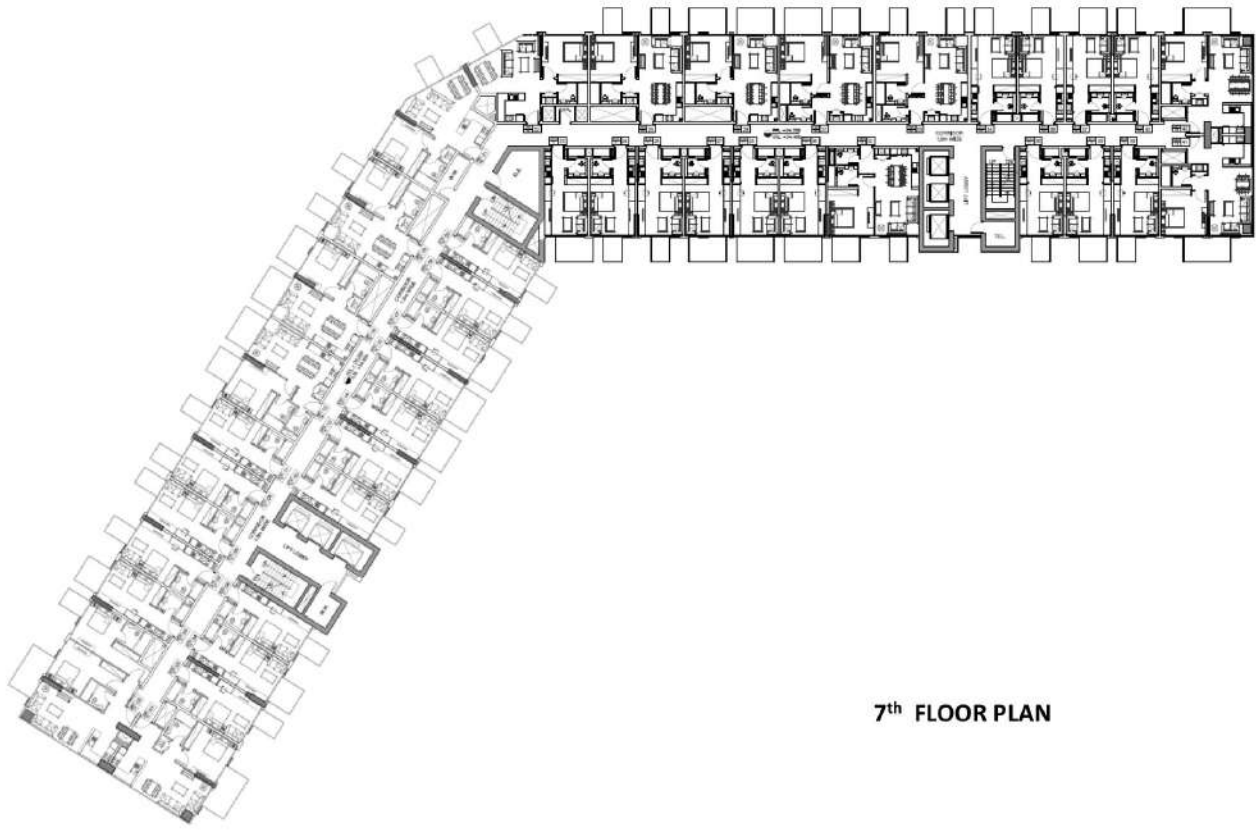
4th FLOOR PLAN



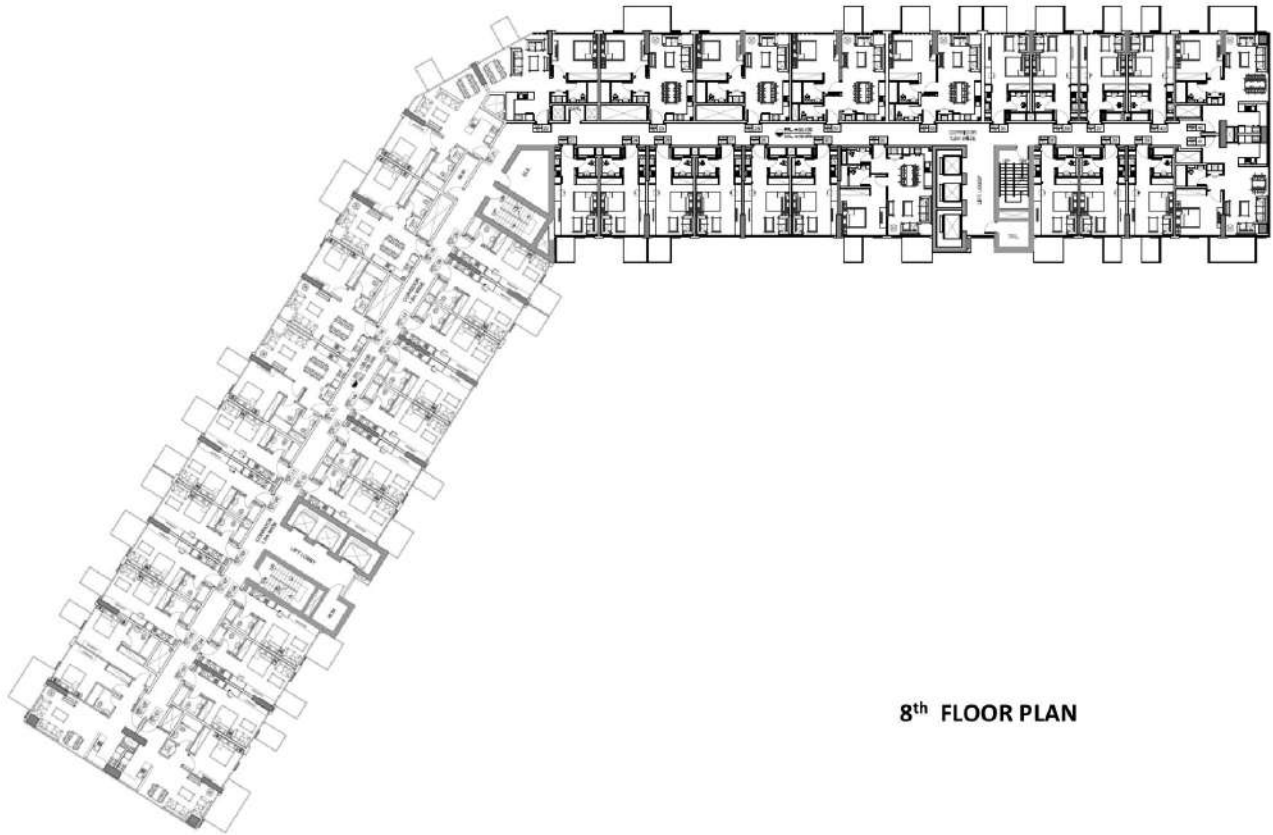
5th FLOOR PLAN



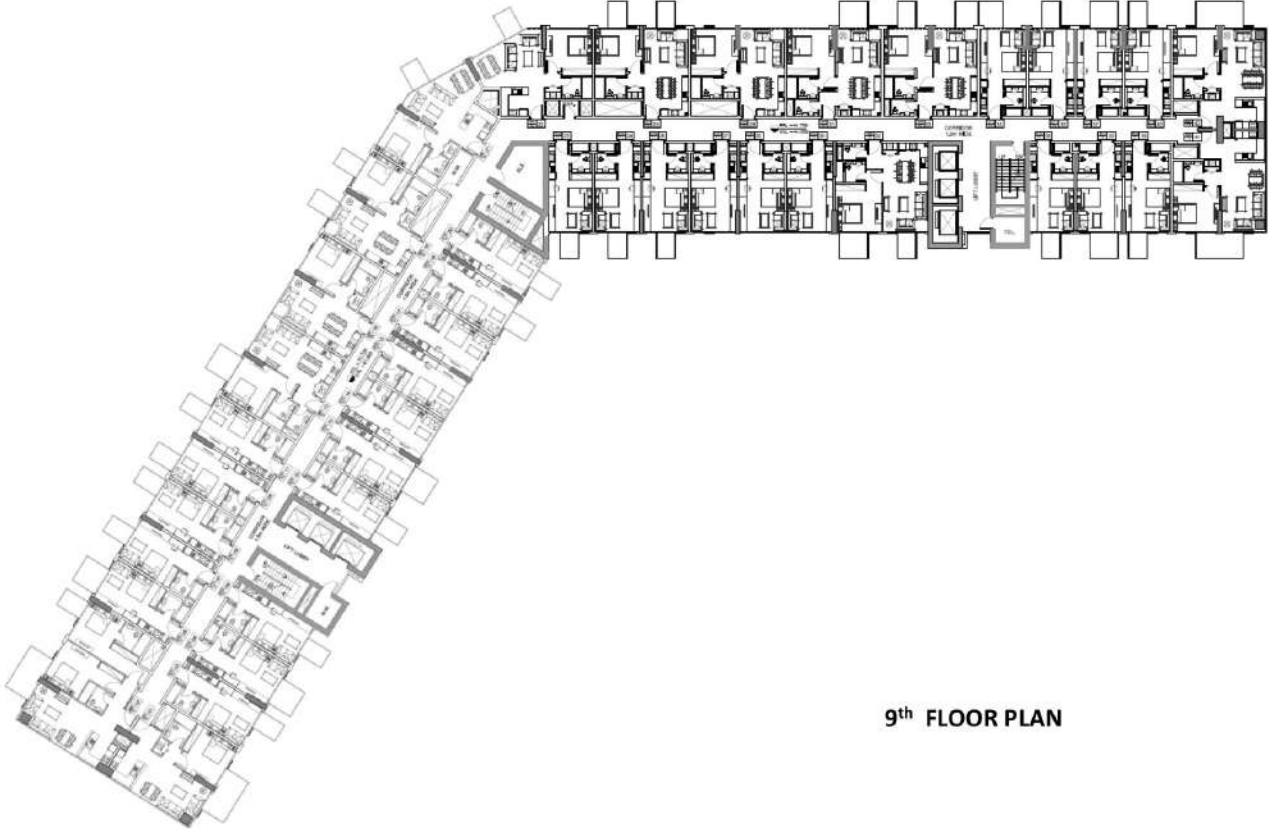
6th FLOOR PLAN



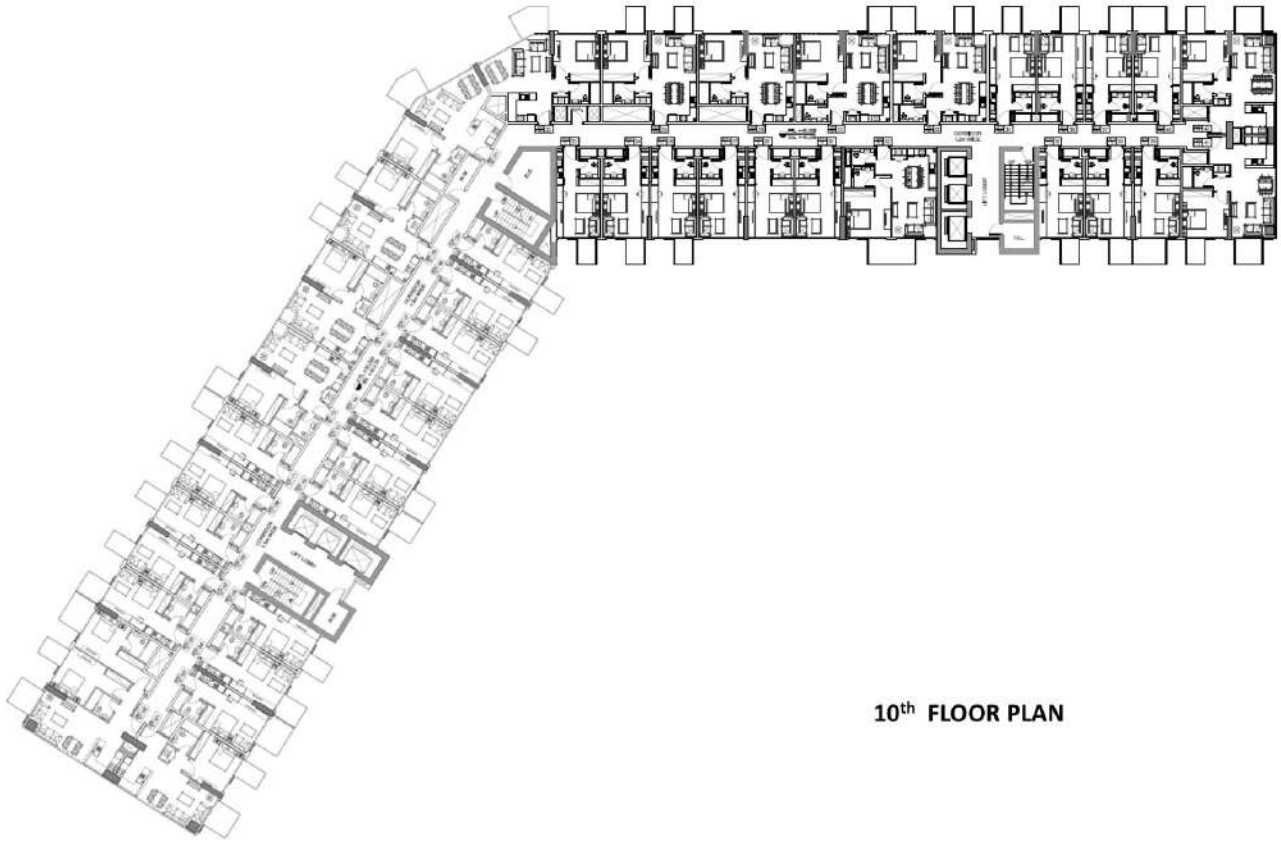
7th FLOOR PLAN



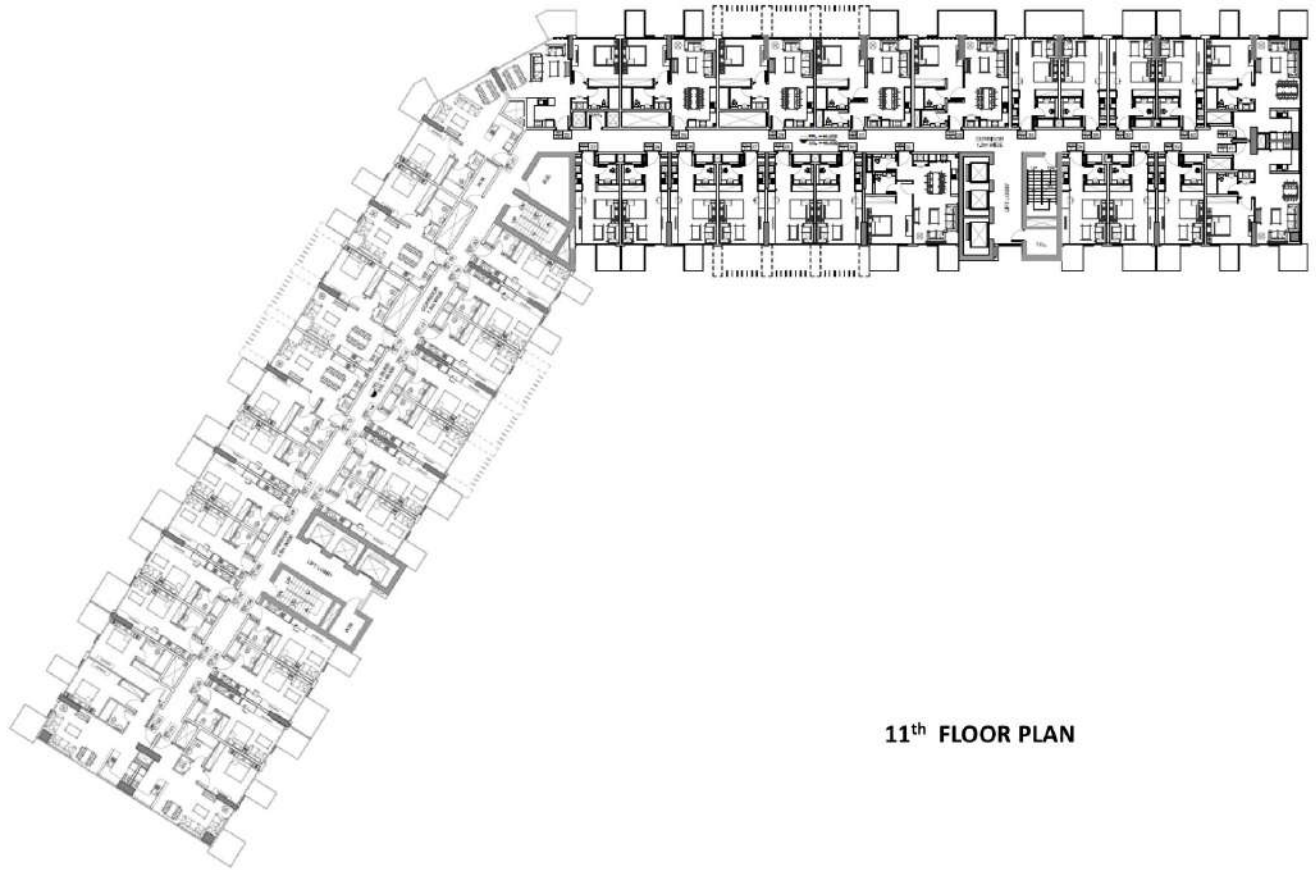
8th FLOOR PLAN



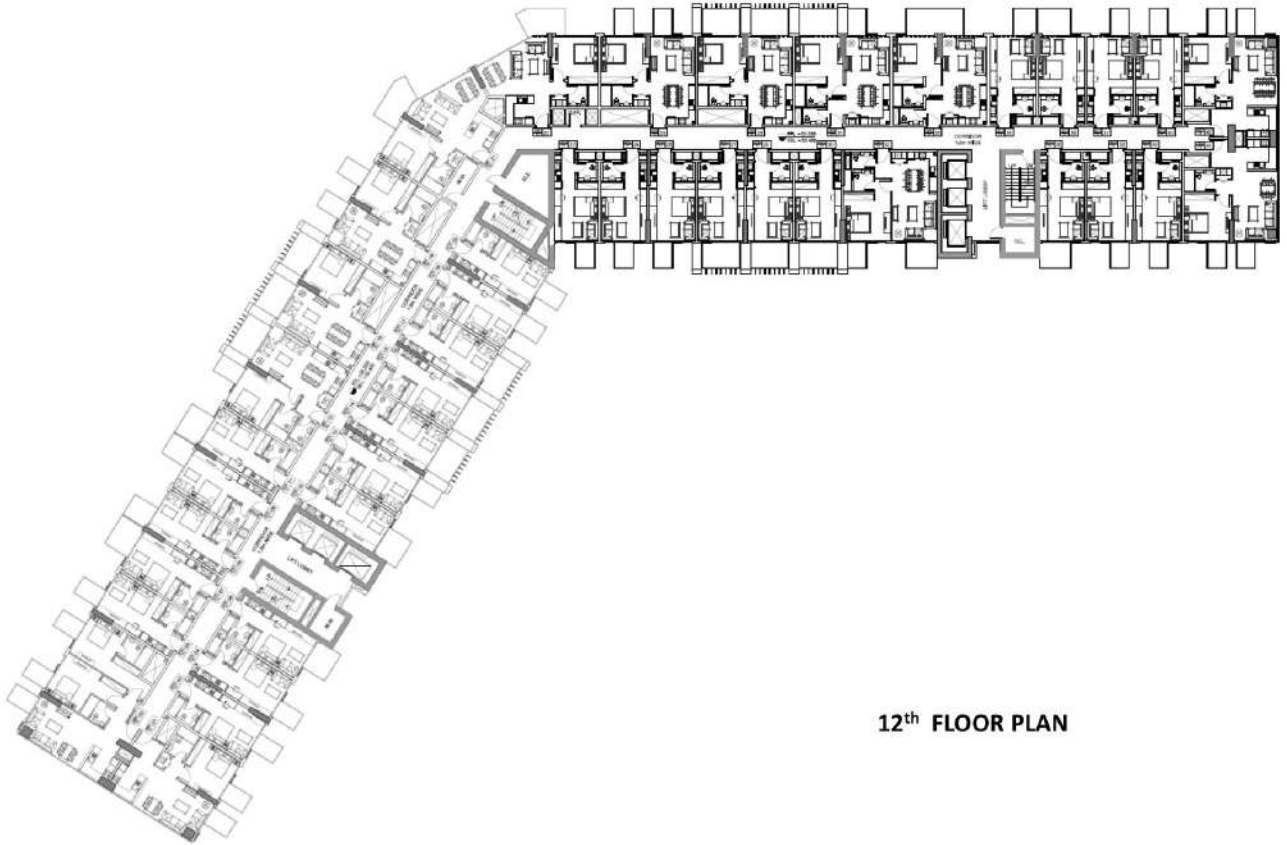
9th FLOOR PLAN



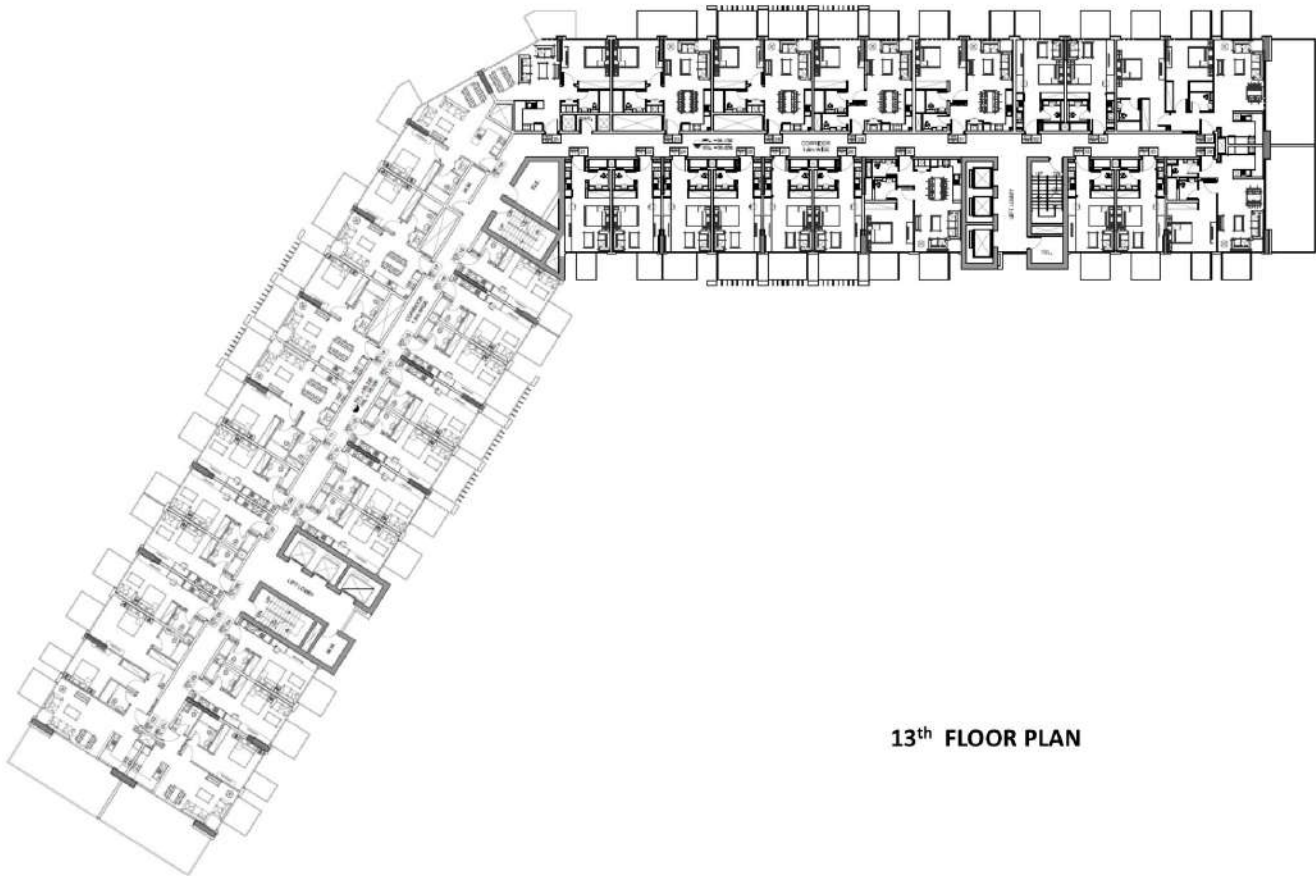
10th FLOOR PLAN



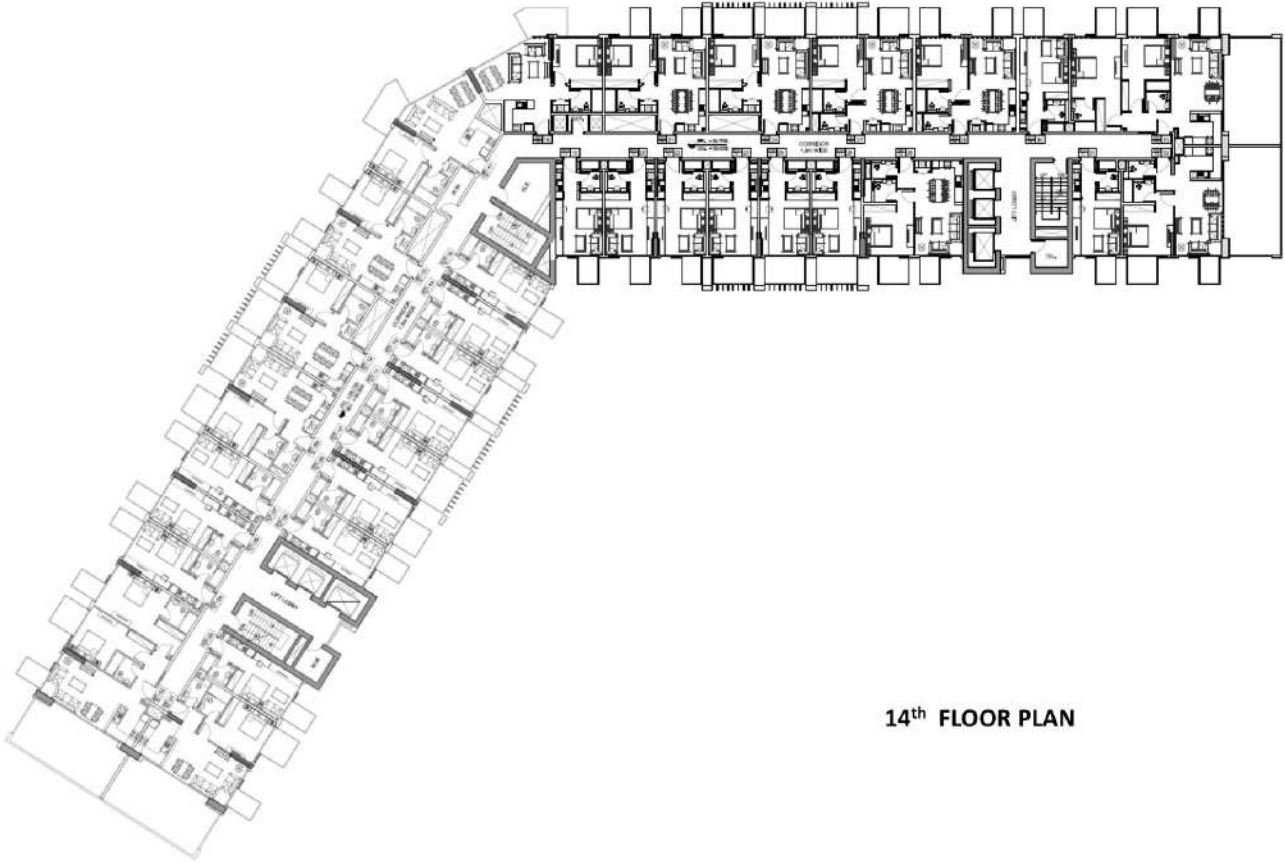
11th FLOOR PLAN



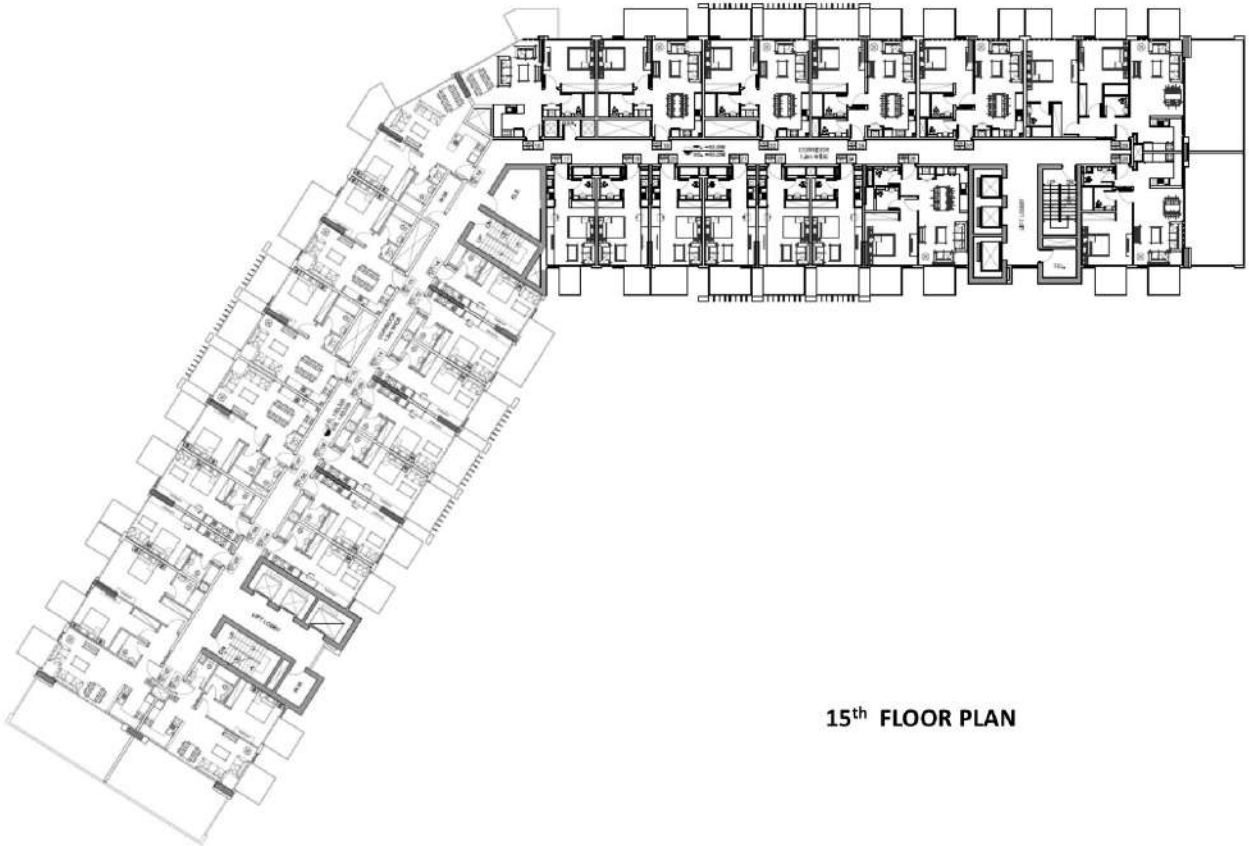
12th FLOOR PLAN



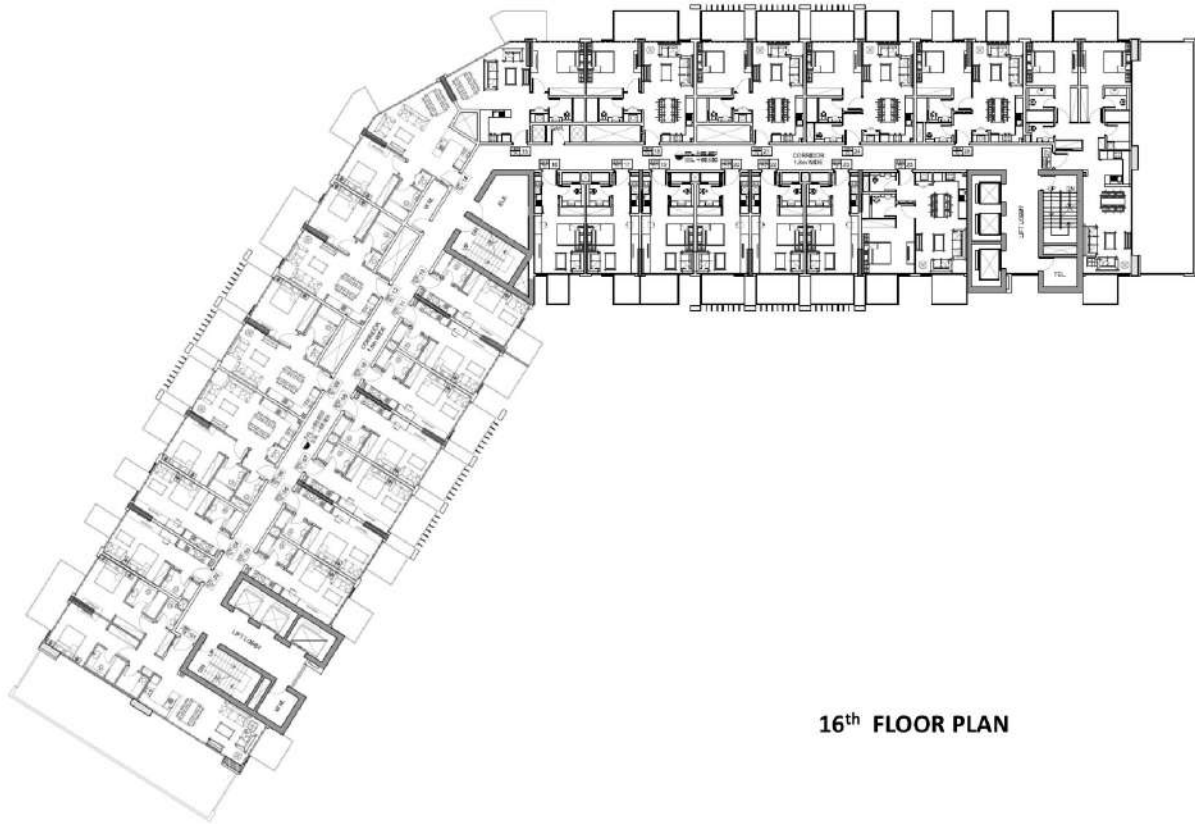
13th FLOOR PLAN



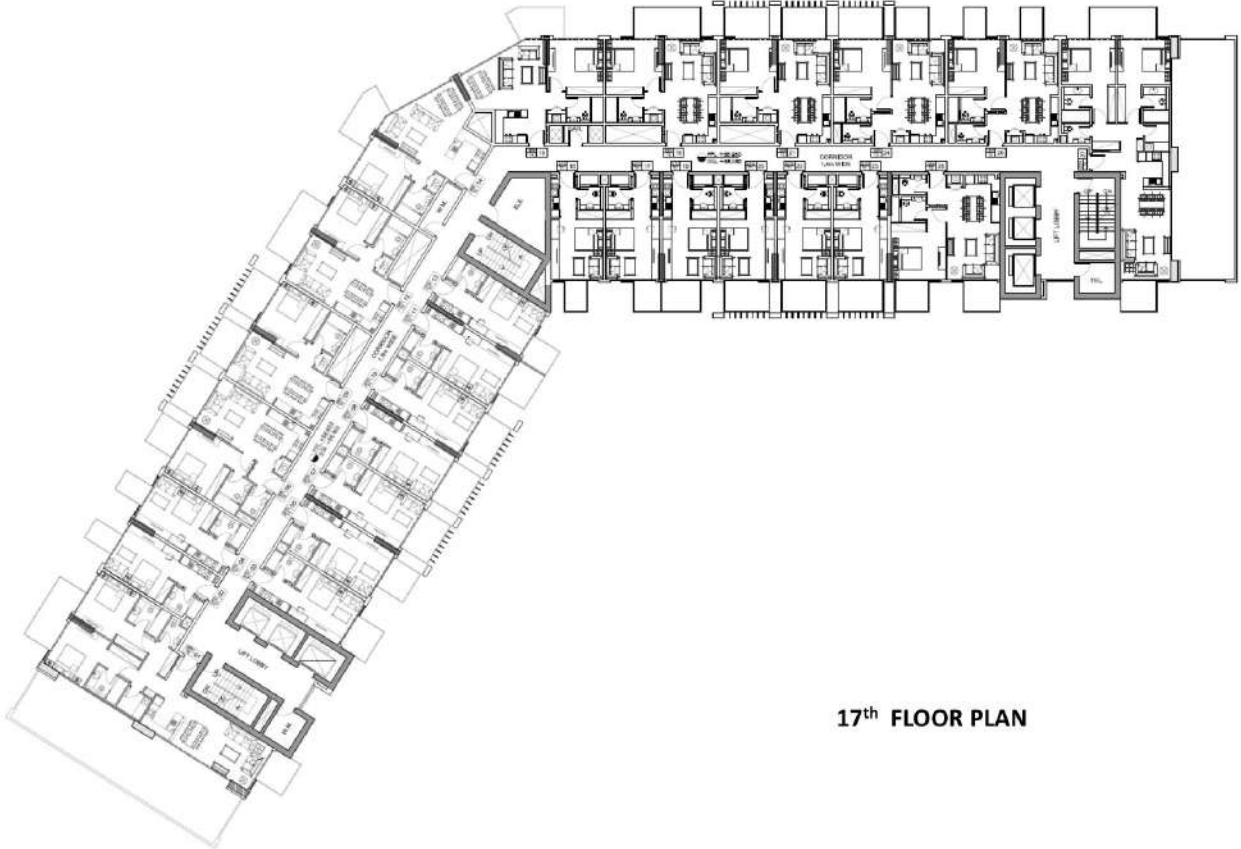
14th FLOOR PLAN



15th FLOOR PLAN



16th FLOOR PLAN



17th FLOOR PLAN



STUDIO - Type 1 First Floor

1. Living Room	3,200' x 4,800"
2. Kitchen	1,200' x 5,500"
3. Bedroom	1,100' x 2,400"
4. Terrace	3,400' x 5,500"
BUILT AREA	51,840 SQFT
TOTAL AREA	54,650 SQFT



STUDIO - Type 1 Typical Floor

1. Living Room	3,800' x 4,800"
2. Kitchen	1,500' x 2,200"
3. Bedroom	1,800' x 2,500"
4. Bathroom	2,400' x 2,200"
FLOOR AREA	50,500 SQ'F
TOTAL AREA	49,200 SQ'FT





ONE BEDROOM - Type 1 First Floor

1. Living Room	3.70m x 3.75m
2. Kitchen	3.90m x 2.60m
3. Bedroom	3.90m x 3.90m
4. Bathroom	2.50m x 1.80m
5. Laundry	1.80m x 0.90m
6. Terrace	11.30m x 11.00m
BUILT AREA	949 SQ. SQFT
TOTAL AREA	1469 SQ. SQFT



ONE BEDROOM - Type 1 Typical Floor

1. Living Room	3.70m x 3.75m
2. Kitchen	2.60m x 3.90m
3. Bedroom	3.90m x 3.90m
4. Bathroom	2.50m x 1.80m
5. Laundry	1.80m x 0.90m
6. Balcony 1	10.00m x 2.00m
7. Balcony 2	10.00m x 2.00m
BUILT AREA	949 SQ. SQFT
TOTAL AREA	773 SQ. SQFT





ONE BEDROOM - Type 2 First Floor

1. Living Room	3.75m x 4.95m
2. Kitchen	2.40m x 3.20m
3. Bedroom	3.15m x 3.55m
4. Bathroom 1	1.80m x 1.40m
5. Bathroom 2	2.40m x 1.40m
6. Laundry	1.20m x 1.20m
7. Terrace	7.65m x 3.15m
8. BALCONY	4.05m x 1.80m
TOTAL AREA	59.64 SQFT



ONE BEDROOM - Type 2 Typical Floor

1. Living Room	3.75m x 3.85m
2. Kitchen	3.15m x 3.75m
3. Bedroom	4.05m x 3.55m
4. Bathroom 1	2.55m x 1.40m
5. Bathroom 2	3.05m x 1.40m
6. Laundry	1.20m x 1.05m
7. Terrace 1	3.45m x 2.25m
8. Terrace 2	3.05m x 2.25m
GST E-0454	67.11 SQFT
TOTAL AREA	78.41 SQFT





ONE BEDROOM - Type 3 First Floor

1. Living Room	3.79m x 4.10m
2. Kitchen	2.45m x 3.00m
3. Bedroom	4.00m x 3.00m
4. Bathroom	3.00m x 1.60m
5. Laundry	1.50m x 3.00m
6. Terrace	7.82m x 3.10m
PUBLIC AREA	62.00 x 0.00 FT
TOTAL AREA	100.00 SQFT



ONE BEDROOM - Type 3 Typical Floor

1. Living Room	3.79m x 3.90m
2. Kitchen	2.45m x 3.00m
3. Bedroom	3.00m x 3.00m
4. Bathroom	2.00m x 1.60m
5. Laundry	1.50m x 3.00m
6. Balcony 1	1.00m x 2.10m
7. Balcony 2	1.00m x 1.10m
PUBLIC AREA	62.00 x 0.00 FT
TOTAL AREA	81.00 SQFT





ONE BEDROOM - Type 4 First Floor

1. Living Room	8.70m x 4.80m
2. Kitchen	2.42m x 2.25m
3. Bedroom	3.50m x 3.75m
4. Bathroom	1.60m x 2.50m
5. Laundry	4.80m x 1.50m
6. Terrace	4.50m x 11.00m
FLOOR AREA	64.81 SQFT
TOTAL AREA	122.11 SQM



ONE BEDROOM - Type 4 Typical Floor

1. Living Room	4.90m x 2.70m
2. Kitchen	2.15m x 2.30m
3. Bedroom	3.00m x 1.40m
4. Bathroom	1.80m x 2.30m
5. Laundry	3.80m x 1.20m
6. Terrace	2.20m x 1.20m
FLOOR AREA	61.65 SQFT
TOTAL AREA	88.29 SQM





ONE BEDROOM - Type 5 15th Floor

1. Living Room	2.65m x 3.70m
2. Kitchen	1.55m x 2.55m
3. Bedroom	1.75m x 3.05m
4. Bathroom 1	1.25m x 1.40m
5. Bathroom 2	1.35m x 1.30m
6. Balcony 1	2.45m x 2.20m
7. Balcony 2	2.40m x 2.20m
8. Terrace	4.32m x 3.35m
SITE AREA	66.45 SQM
TOTAL AREA	116.75 SQM



TWO BEDROOM - Type 1 3rd Floor

1. Living Room	3.30m x 3.70m
2. Kitchen	2.85m x 2.90m
3. Bedroom 1	3.55m x 2.30m
4. Bedroom 2	3.75m x 2.70m
5. Bathroom 1	1.35m x 2.00m
6. BATHROOM 2	1.90m x 2.00m
7. Balcony 1	1.65m x 2.20m
8. Balcony 2	1.65m x 2.20m
9. Terrace 1	2.40m x 2.20m
Site Area	88m x 55m
TOTAL AREA	188.87 SQM





TWO BEDROOM - Type 2 14th Floor

1. Living Room	3.90m x 3.70m
2. Kitchen	2.85m x 3.85m
3. Bedroom 1	3.90m x 3.30m
4. Bedroom 2	3.75m x 3.75m
5. Bathroom 1	1.80m x 2.30m
6. Bathroom 2	1.90m x 2.00m
7. Balcony 1	1.40m x 2.20m
8. Balcony 2	1.60m x 2.00m
9. Balcony 3	2.40m x 2.20m
10. Terrace	4.20m x 8.90m
6. SITE AREA	980.88 SQM
TOTAL AREA	1093.02 SQM



TWO BEDROOM - Type 3 16th Floor

1. Living Room	3.90m x 3.80m
2. Kitchen	3.90m x 3.80m
3. Bedroom 1	3.90m x 3.80m
4. Bedroom 2	3.75m x 3.80m
5. Bathroom 1	1.90m x 2.30m
6. Bathroom 2	2.00m x 2.30m
7. Bedroom 3	1.80m x 2.20m
8. Laundry	1.70m x 1.90m
9. Balcony 1	2.00m x 2.00m
10. Balcony 2	4.75m x 2.00m
11. Terrace	4.20m x 8.90m
SUITE AREA	1093.02 SQM
TOTAL AREA	2084.02 SQM





TWO BEDROOM - Type 4 17th Floor

1. Living Room	8.75m x 3.75m
2. Kitchen	3.65m x 3.05m
3. Bedroom 1	7.35m x 3.70m
4. Bedroom 2	5.35m x 3.85m
5. Bathroom 1	1.95m x 2.05m
6. Bathroom 2	2.05m x 1.05m
7. Balcony 1	2.25m x 4.35m
8. Balcony 2	2.20m x 2.45m
9. Terrace	18.75m x 4.55m
10. FIT AREA	10.45m x 5.07m
TOTAL AREA	160.11.02m ²



Project Summary

AZIZI DEVELOPMENTS is proud to introduce Azizi Farhad Residence, a high-end residential apartment building with facilities in Health Care City district of Dubai. The building features a unique design that creates a unique look that is unsurpassed in Dubai.

Azizi Farhad Residence features 634 luxurious apartments that offer an unparalleled level of convenience and amenities. Each apartment is delivered with a modern and fresh interior design.

Location

Located in Dubai Health Care City District

Fantastic views of Burj Khalifa and the tallest tower in the world (Dubai Creek Tower).

6 km driving to Dubai downtown and Dubai mall (5min)

8 km driving to Dubai airport (5min)

3 km driving to WAFI mall (2min)

4 km driving to Trade center (4min)

5 km driving to Alkhour Park (3min)

2 km walking to metro station (20 min)

Convenient access to AlKail road and Oud Metha road

Project Details

Plot Area: 86,392 sq.ft

Total Construction Area: 728,815 sq.ft

Total Height: 80 M

Levels: B + G + 2P + 17

Type

Residential Building with Facilities