



THE BILTMORE

RESIDENCES SUFOUH





FLOOR PLANS

SIGNATURE COLLECTION

Type 1A-F

Type 2A-C

ATMOSPHERE COLLECTION

Type 2D

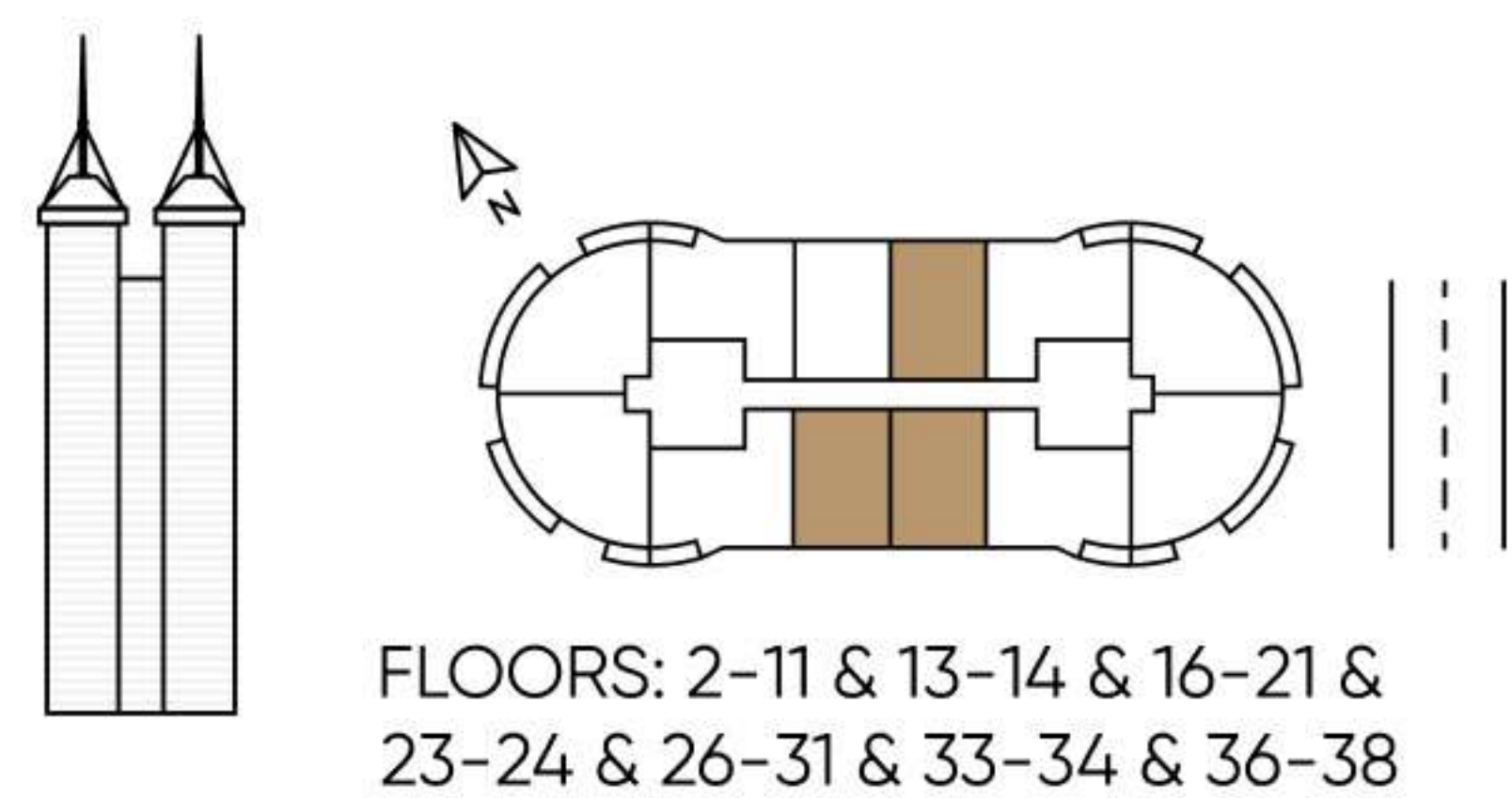
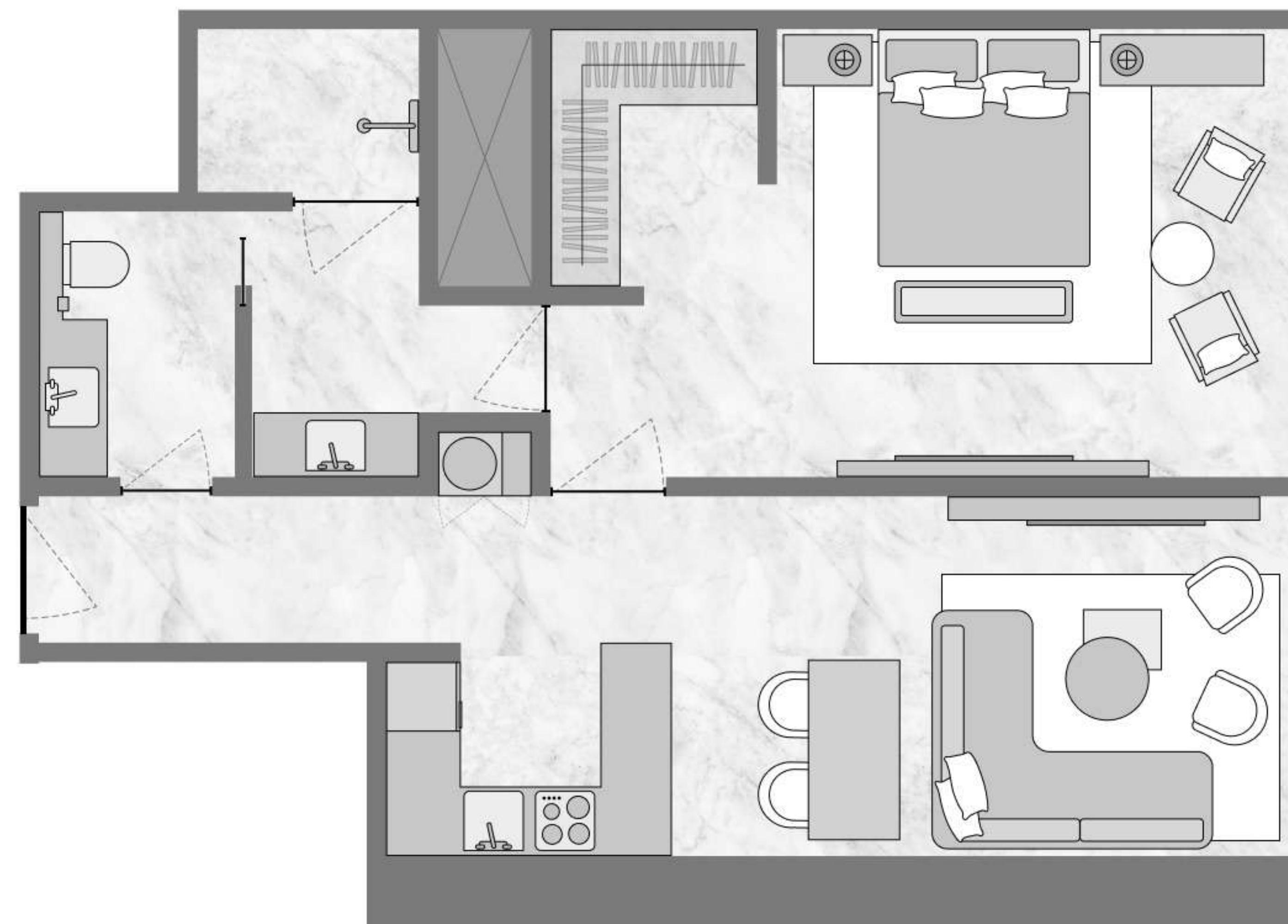
Type 3A-B

TYPE 1A

SIGNATURE COLLECTION

Bedrooms 1

Total area 756,38 SQ FT



All drawings and sizes are approximate. Drawings are not to scale and can be changed without notice. The developer reserves the right to make changes. The blocks are taken from a typical building floor, and the dimensions of the columns may vary depending on the floor level. The furniture shown are for informational purposes only.

Biltmore Sufouh

By GJ Real Estate



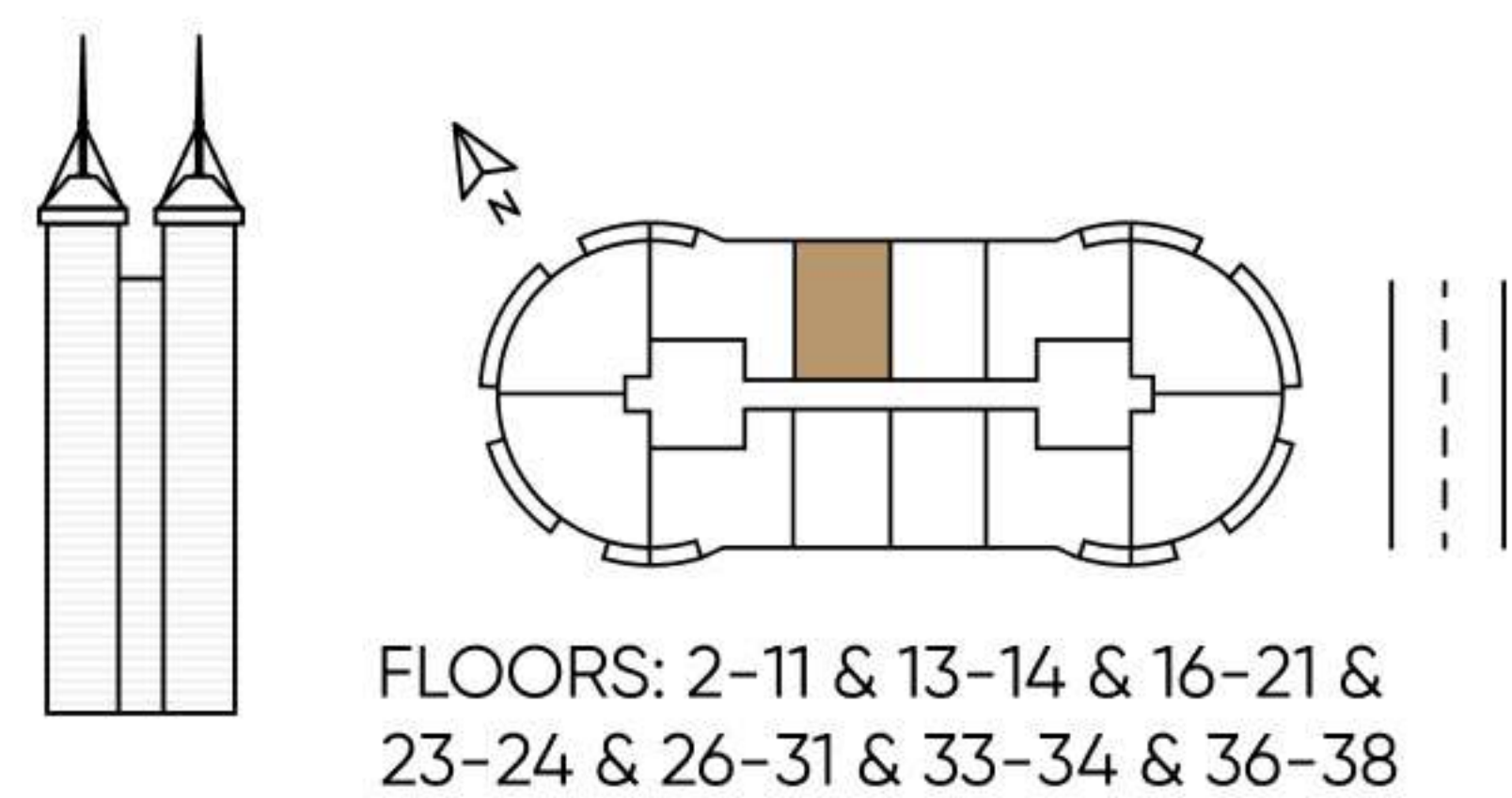
— AX —
CAPITAL

TYPE 1B

SIGNATURE COLLECTION

Bedrooms 1

Total area 649,28 SQ FT



All drawings and sizes are approximate. Drawings are not to scale and can be changed without notice. The developer reserves the right to make changes. The blocks are taken from a typical building floor, and the dimensions of the columns may vary depending on the floor level. The furniture shown are for informational purposes only.

Biltmore Sufouh

By GJ Real Estate



— AX —
CAPITAL

TYPE IC

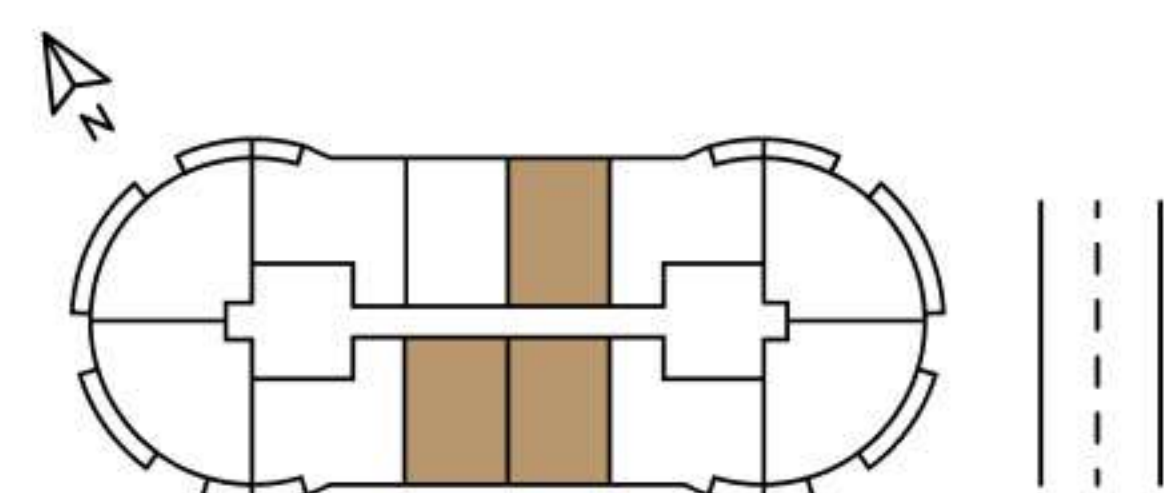
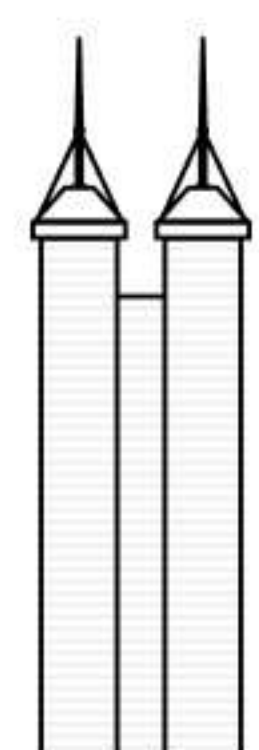
SIGNATURE COLLECTION

Bedrooms 1

Total area 741,10 SQ FT

Biltmore Sufouh

By GJ Real Estate



FLOORS: 12 & 22 & 32

All drawings and sizes are approximate. Drawings are not to scale and can be changed without notice. The developer reserves the right to make changes. The blocks are taken from a typical building floor, and the dimensions of the columns may vary depending on the floor level. The furniture shown are for informational purposes only.

— AX —
CAPITAL

TYPE 1D

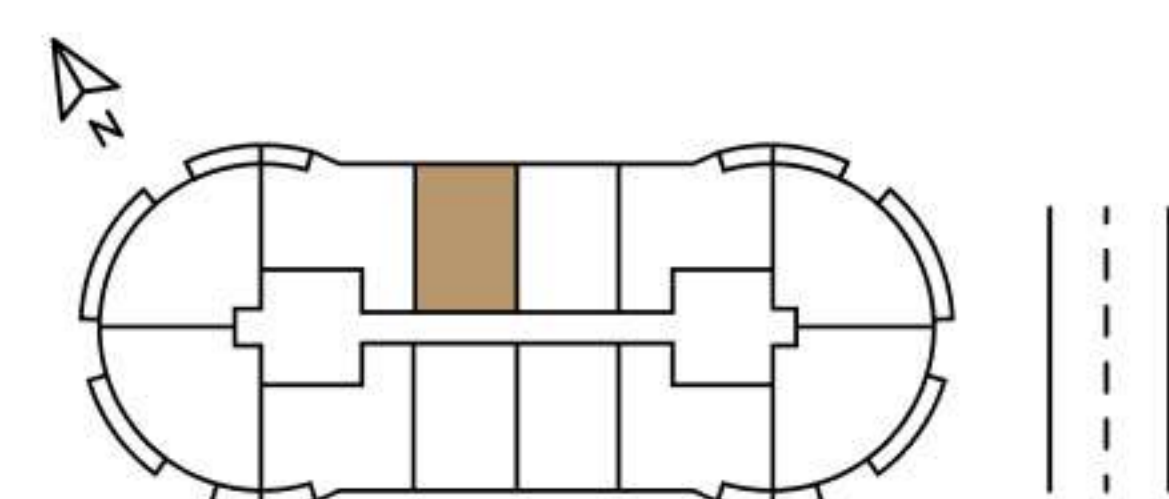
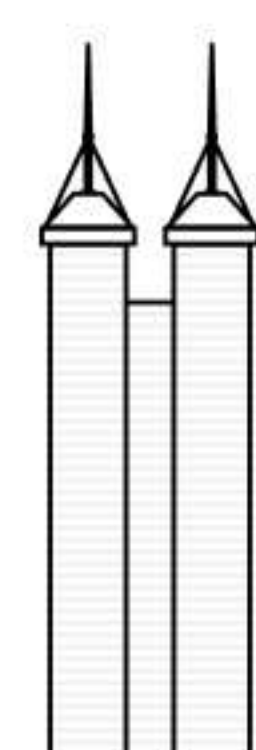
SIGNATURE COLLECTION

Bedrooms 1

Total area 701,05 SQ FT

Biltmore Sufouh

By GJ Real Estate



FLOORS: 12 & 22 & 32

All drawings and sizes are approximate. Drawings are not to scale and can be changed without notice. The developer reserves the right to make changes. The blocks are taken from a typical building floor, and the dimensions of the columns may vary depending on the floor level. The furniture shown are for informational purposes only.

— AX —
CAPITAL

TYPE 1E

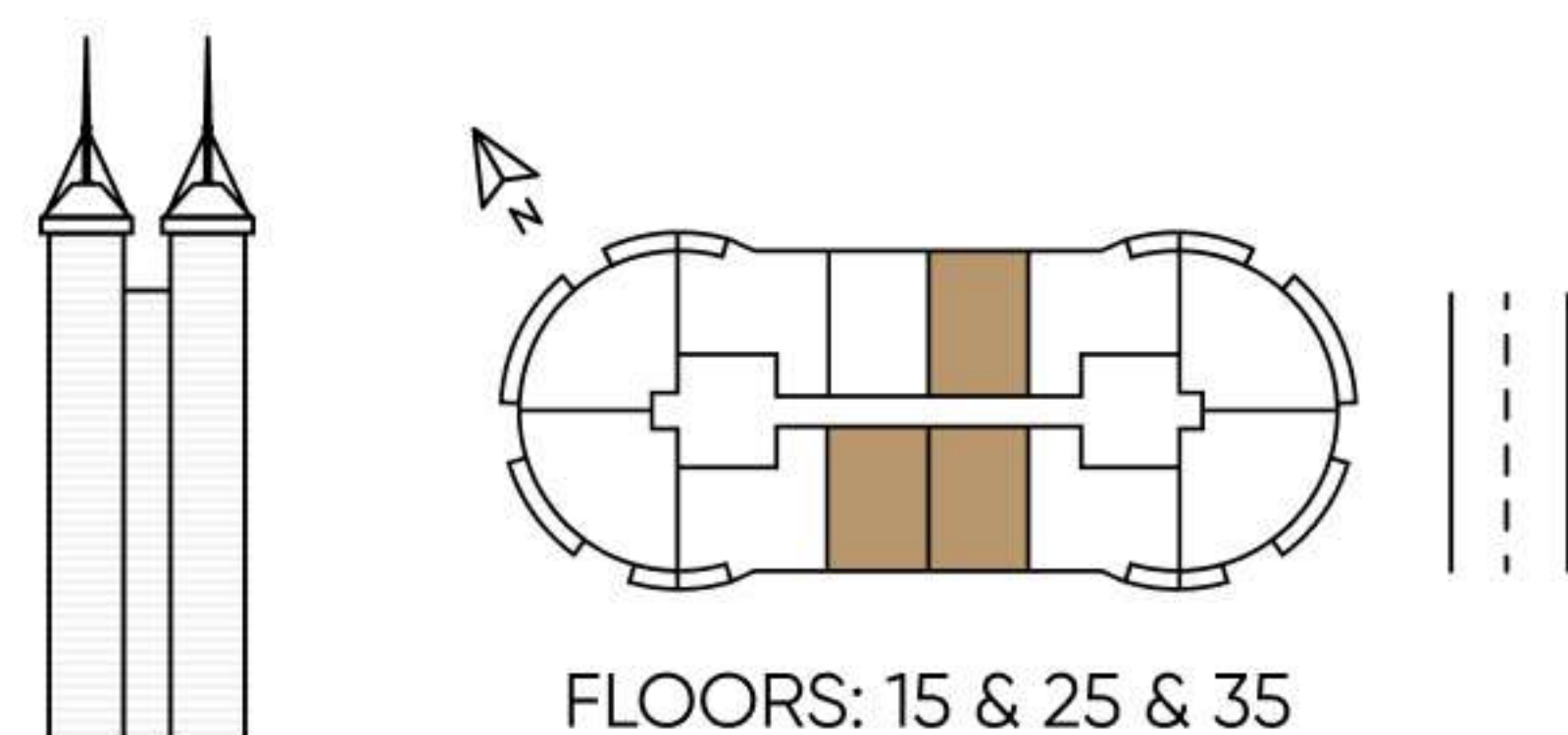
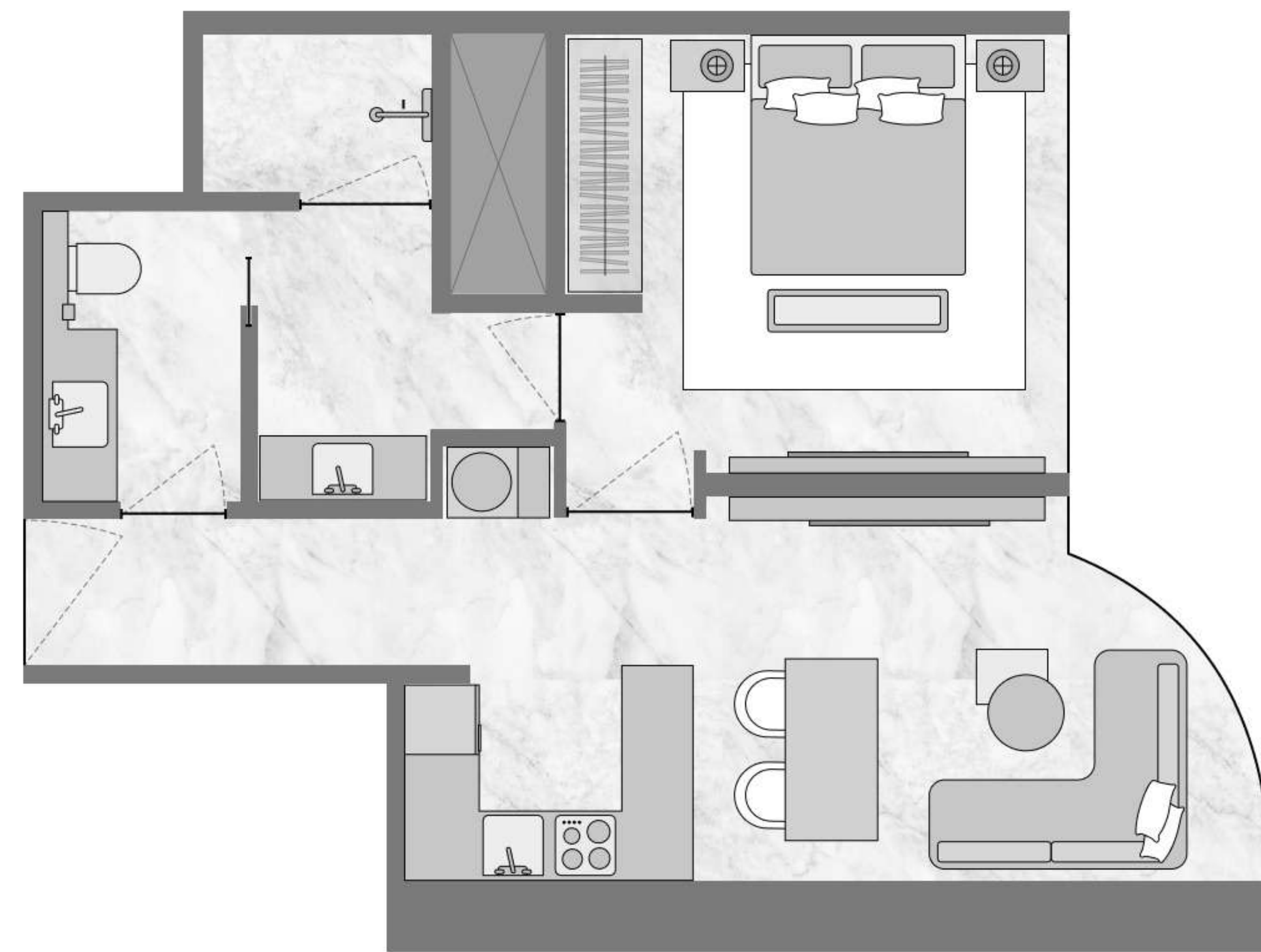
SIGNATURE COLLECTION

Bedrooms 1

Total area 679,96 SQ FT

Biltmore Sufouh

By GJ Real Estate



All drawings and sizes are approximate. Drawings are not to scale and can be changed without notice. The developer reserves the right to make changes. The blocks are taken from a typical building floor, and the dimensions of the columns may vary depending on the floor level. The furniture shown are for informational purposes only.

— AX —
CAPITAL

TYPE 1F

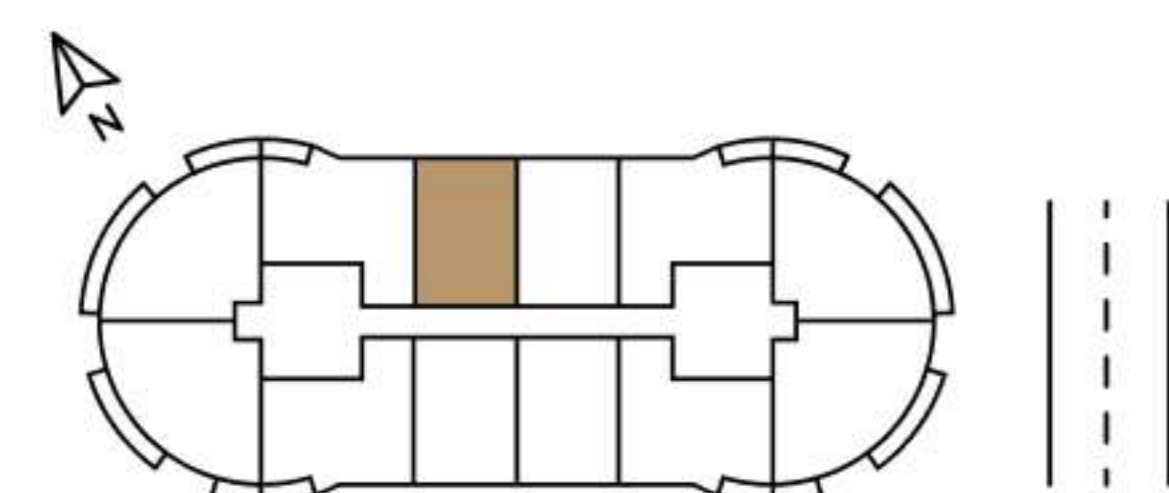
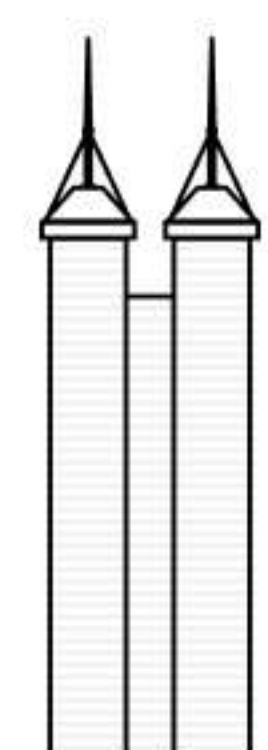
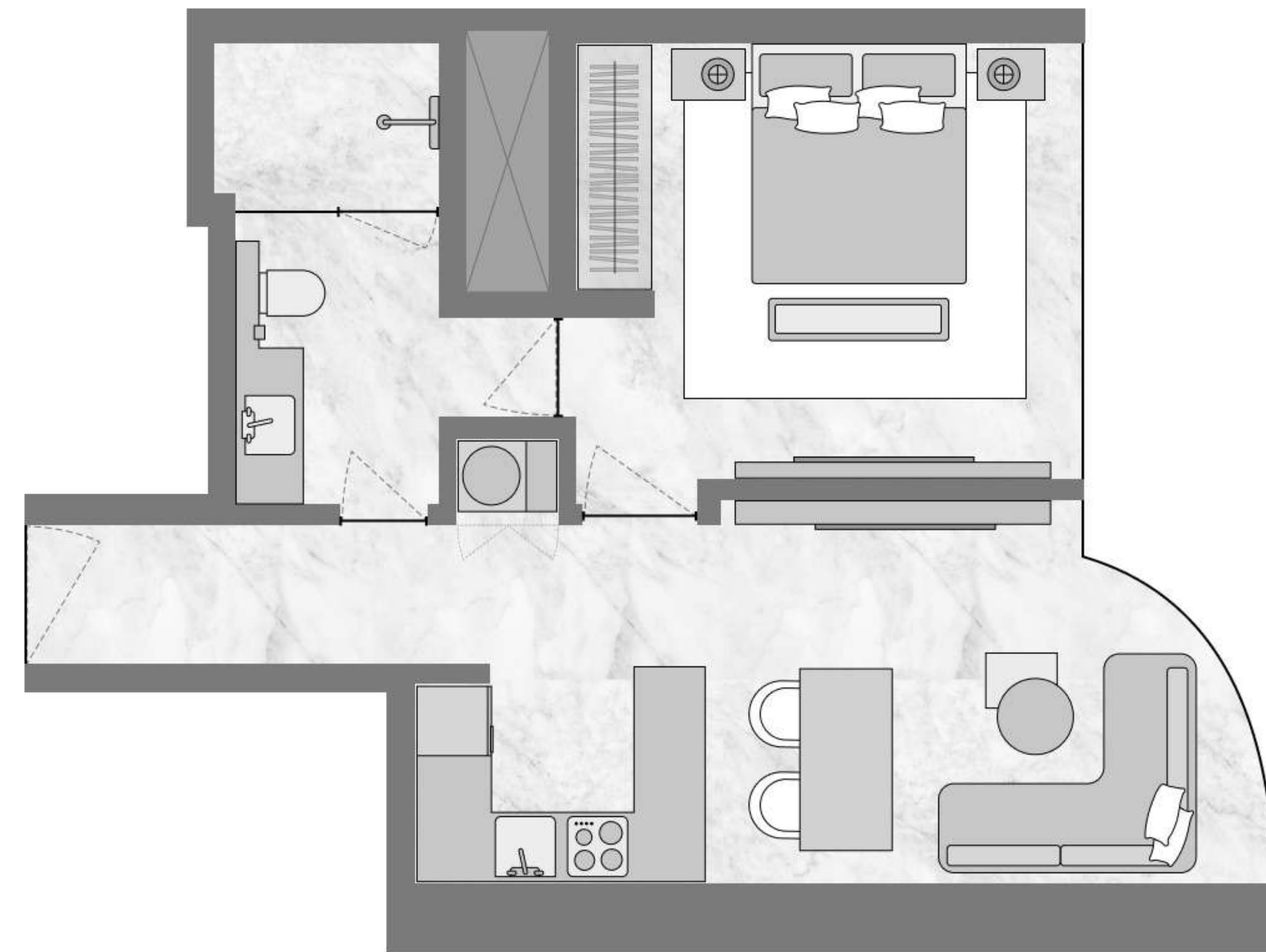
SIGNATURE COLLECTION

Bedrooms 1

Total area 639,91 SQ FT

Biltmore Sufouh

By GJ Real Estate



FLOORS: 15 & 25 & 35

All drawings and sizes are approximate. Drawings are not to scale and can be changed without notice. The developer reserves the right to make changes. The blocks are taken from a typical building floor, and the dimensions of the columns may vary depending on the floor level. The furniture shown are for informational purposes only.

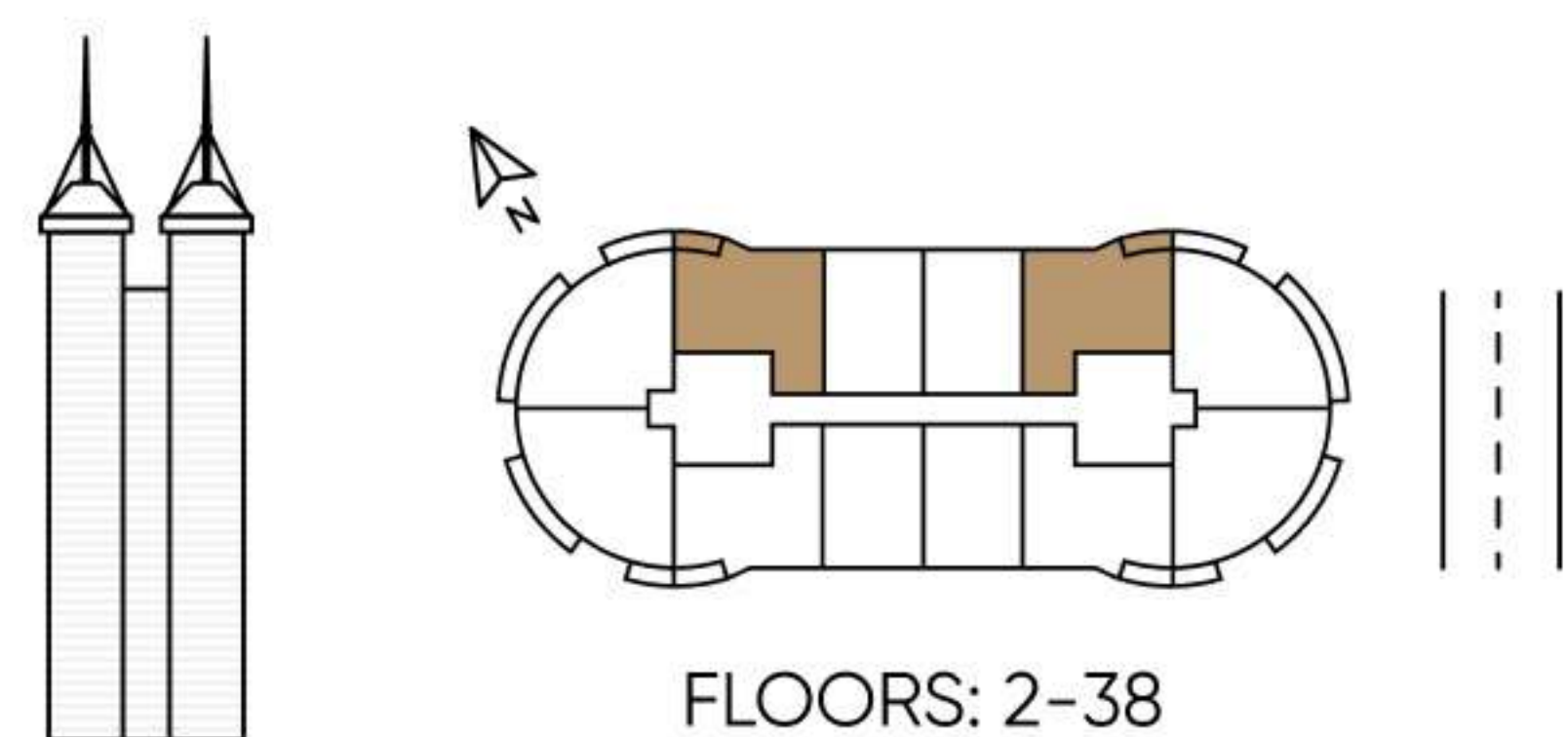
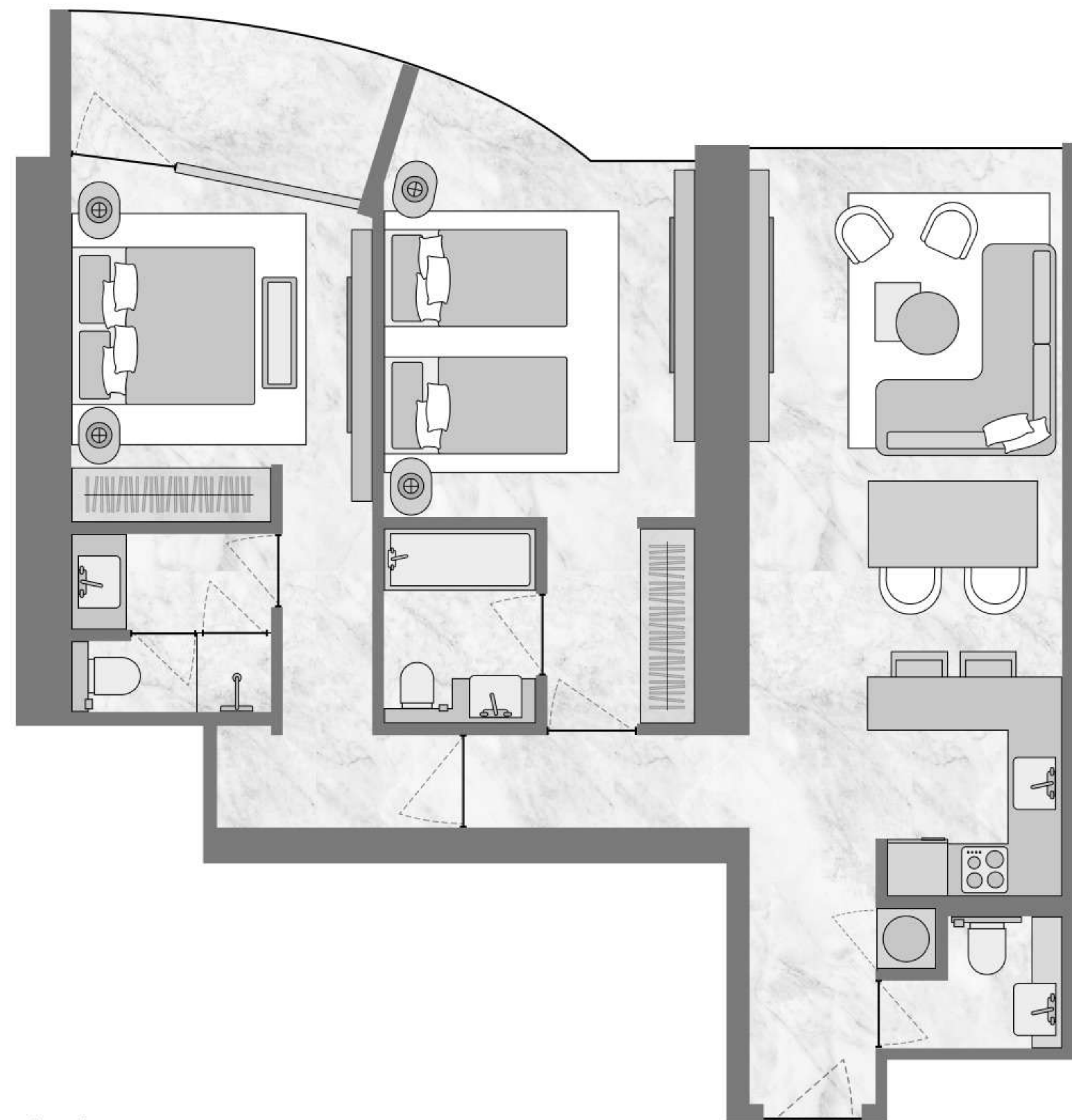
— AX —
CAPITAL

TYPE 2A

SIGNATURE COLLECTION

Bedrooms 2

Total area 1088,45 SQ FT



FLOORS: 2-38

All drawings and sizes are approximate. Drawings are not to scale and can be changed without notice. The developer reserves the right to make changes. The blocks are taken from a typical building floor, and the dimensions of the columns may vary depending on the floor level. The furniture shown are for informational purposes only.

Biltmore Sufouh

By GJ Real Estate



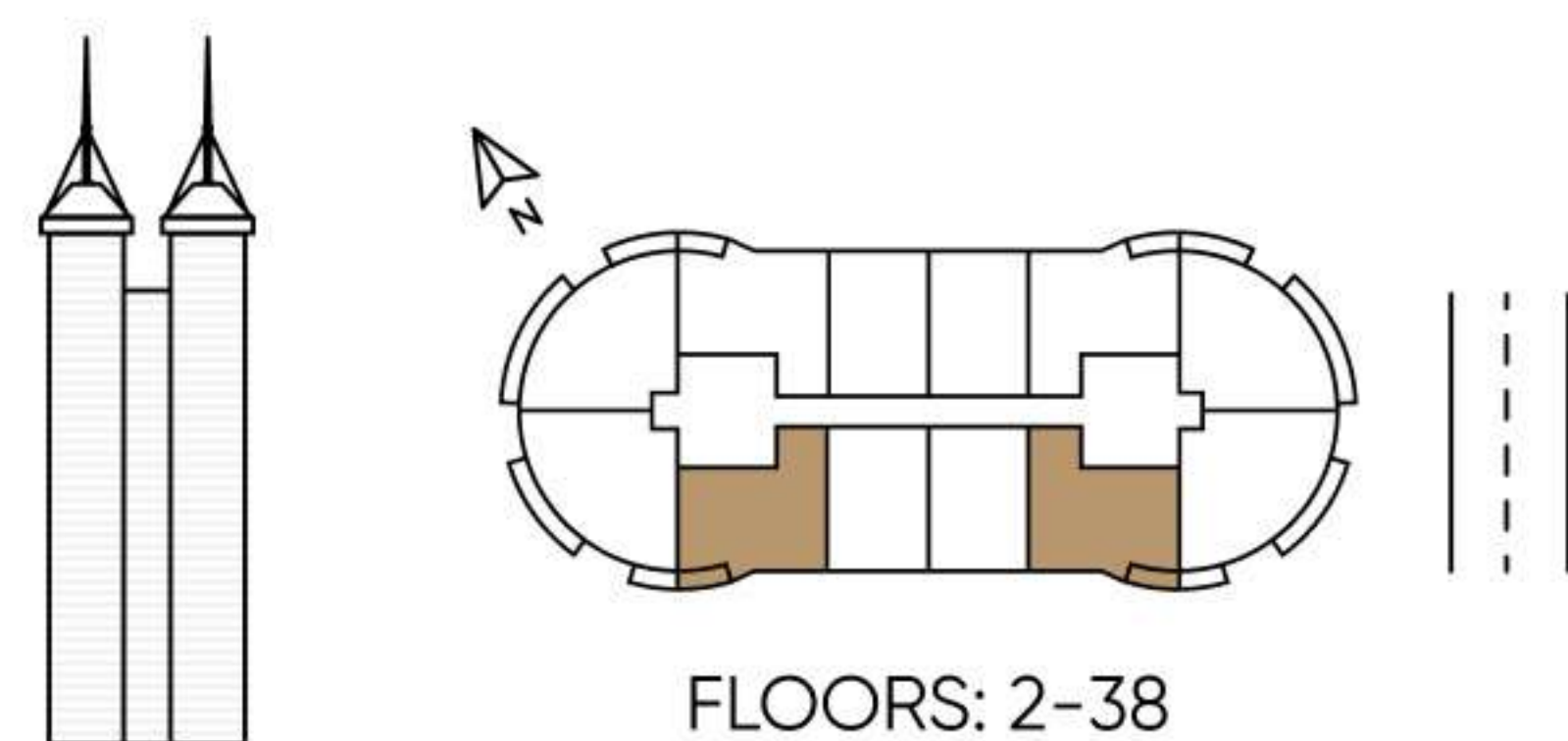
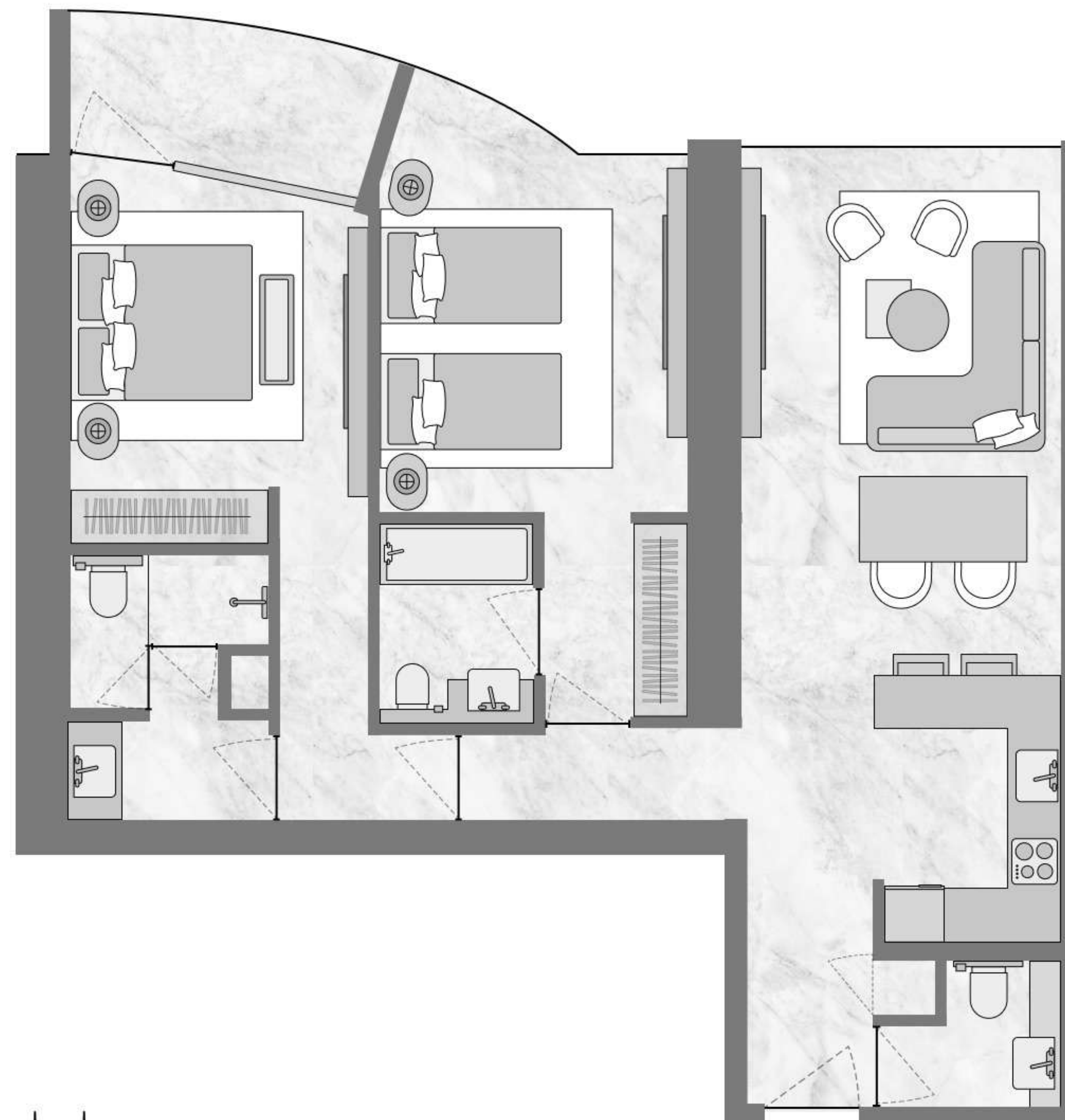
— AX —
CAPITAL

TYPE 2B

SIGNATURE COLLECTION

Bedrooms 2

Total area 1131,23 SQ FT



All drawings and sizes are approximate. Drawings are not to scale and can be changed without notice. The developer reserves the right to make changes. The blocks are taken from a typical building floor, and the dimensions of the columns may vary depending on the floor level. The furniture shown are for informational purposes only.

Biltmore Sufouh

By GJ Real Estate



— AX —
CAPITAL

TYPE 2C-A

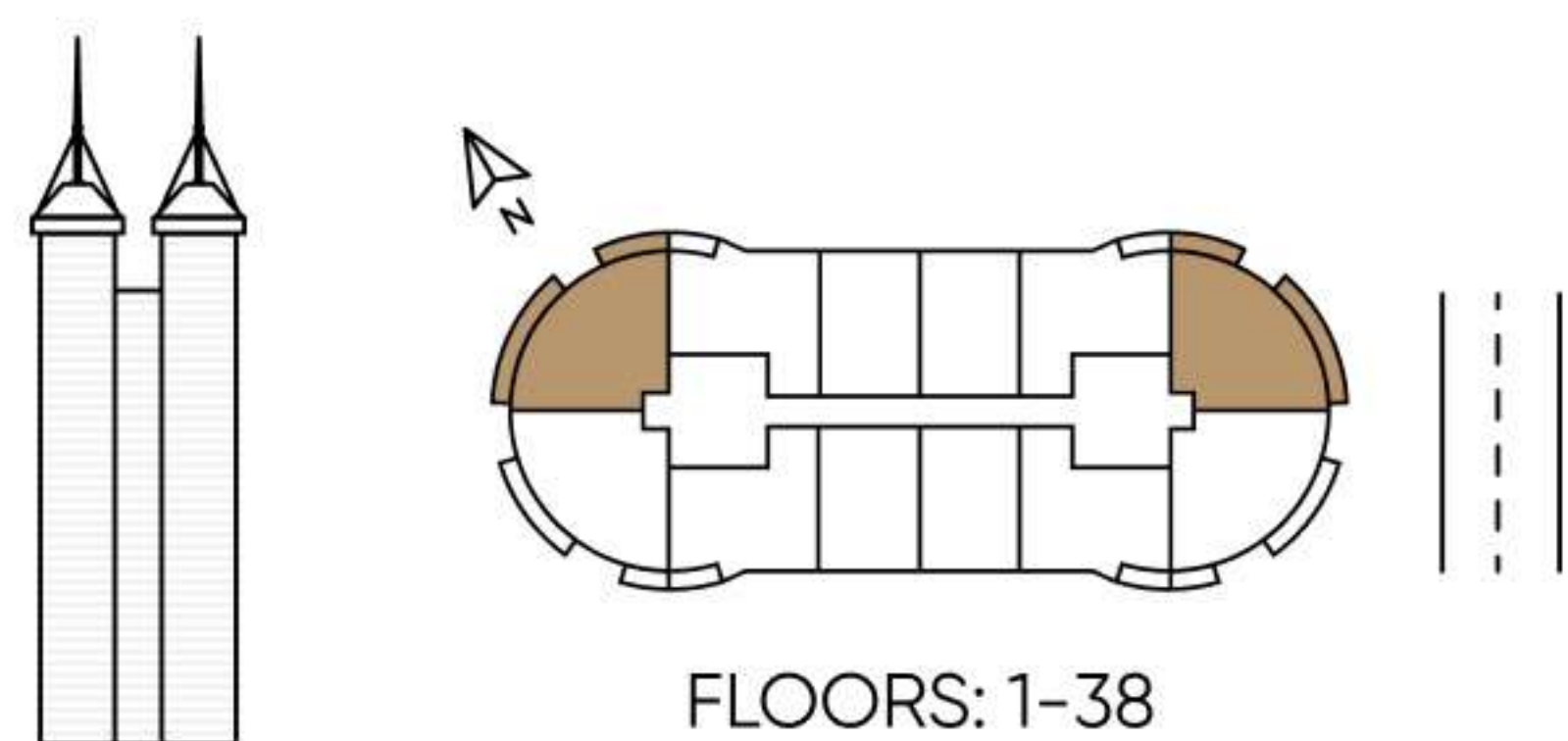
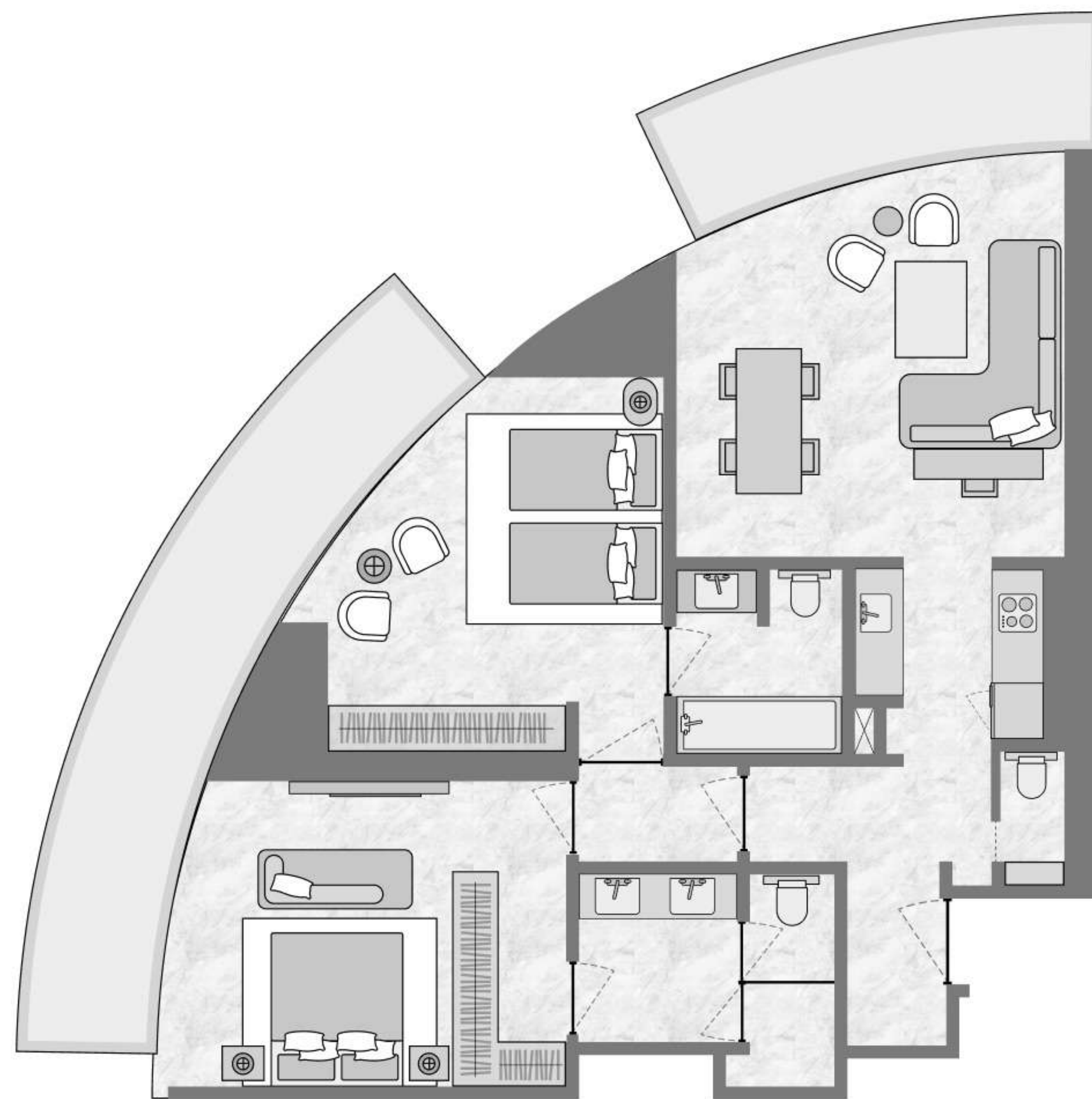
SIGNATURE COLLECTION

Bedrooms 2

Total area 1333.86 SQ FT

Biltmore Sufouh

By GJ Real Estate



All drawings and sizes are approximate. Drawings are not to scale and can be changed without notice. The developer reserves the right to make changes. The blocks are taken from a typical building floor, and the dimensions of the columns may vary depending on the floor level. The furniture shown are for informational purposes only.

— AX —
CAPITAL

TYPE 2C-B

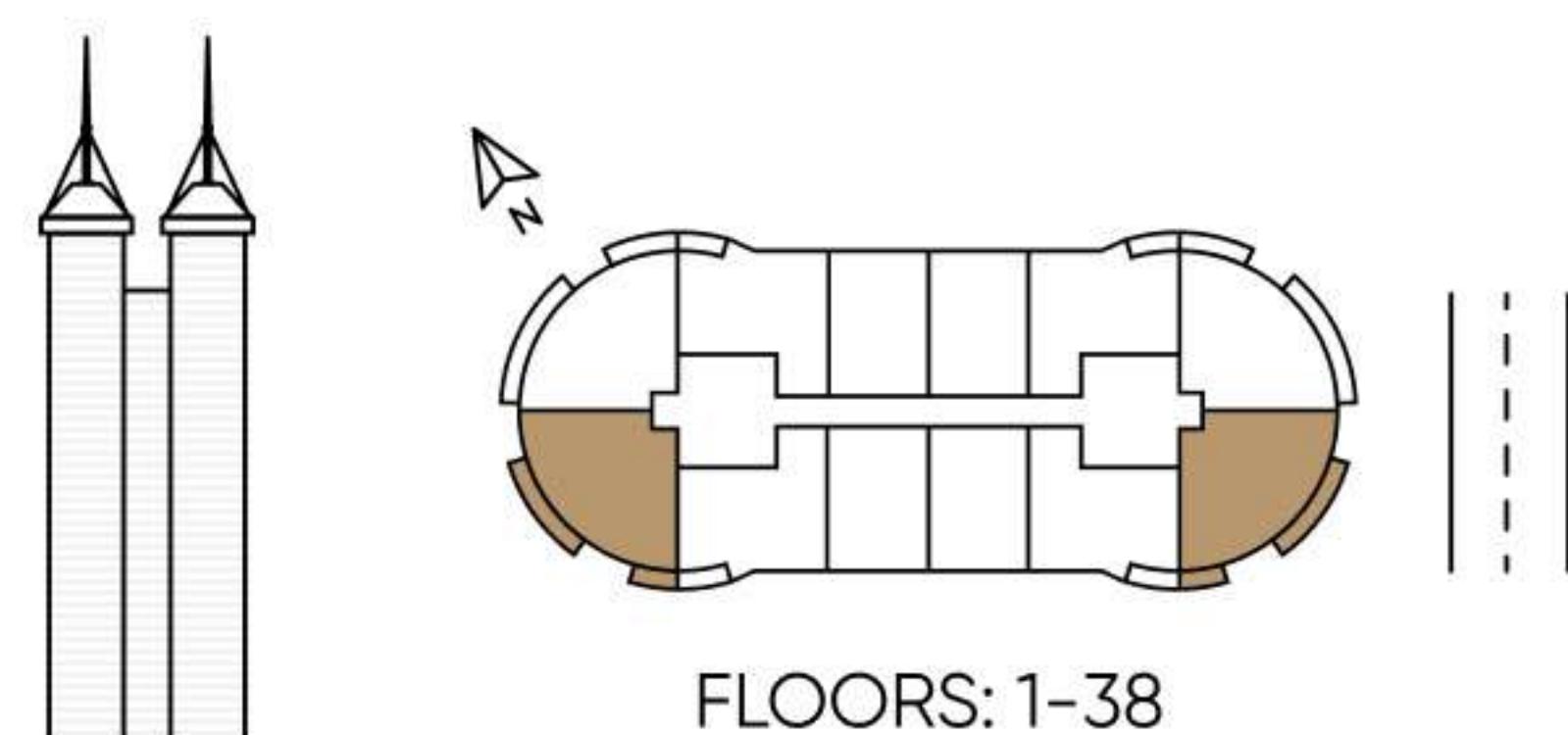
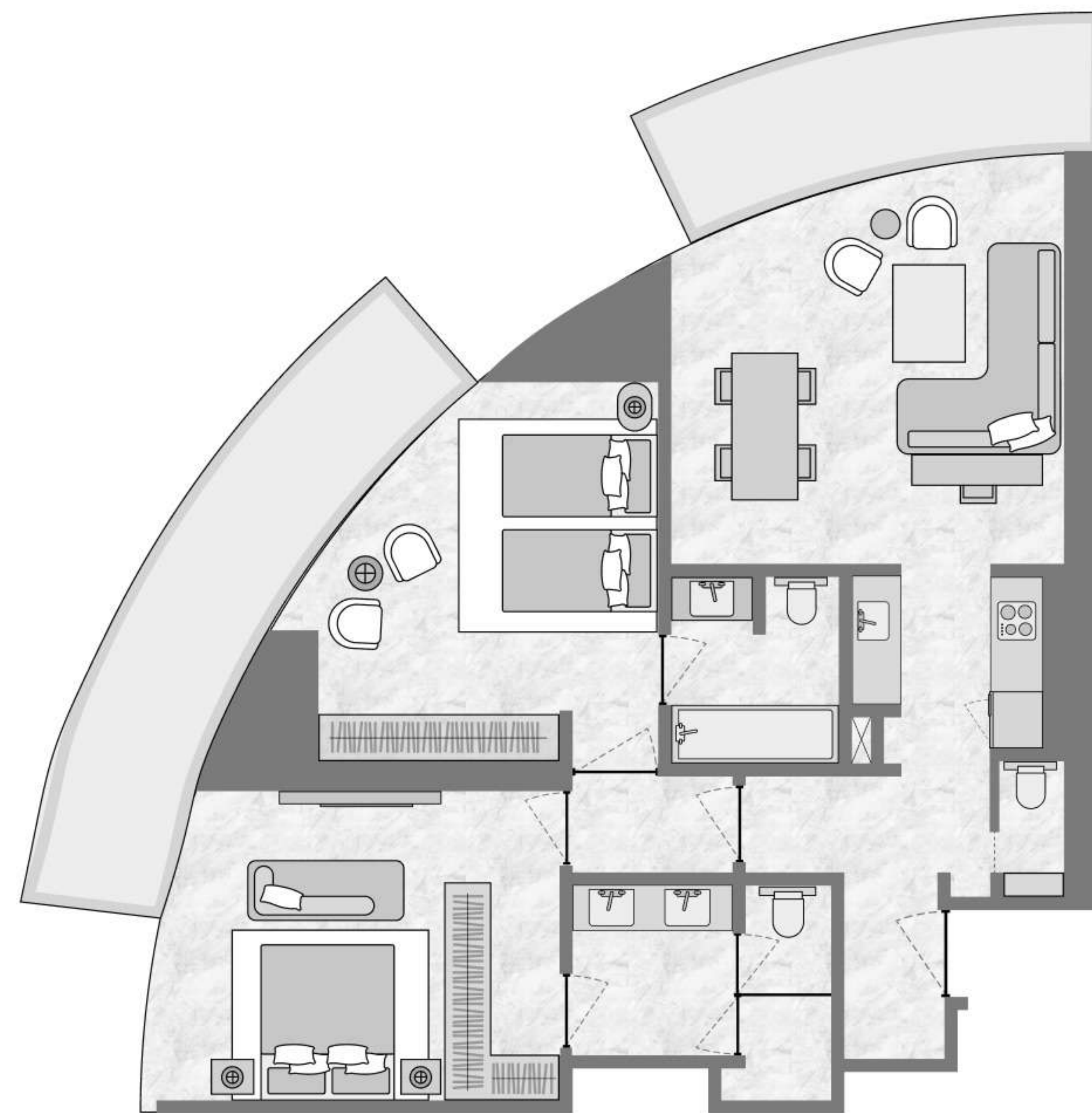
SIGNATURE COLLECTION

Bedrooms 2

Total area 1260.78 SQ FT

Biltmore Sufouh

By GJ Real Estate



All drawings and sizes are approximate. Drawings are not to scale and can be changed without notice. The developer reserves the right to make changes. The blocks are taken from a typical building floor, and the dimensions of the columns may vary depending on the floor level. The furniture shown are for informational purposes only.

— AX —
CAPITAL

TYPE 2D-A

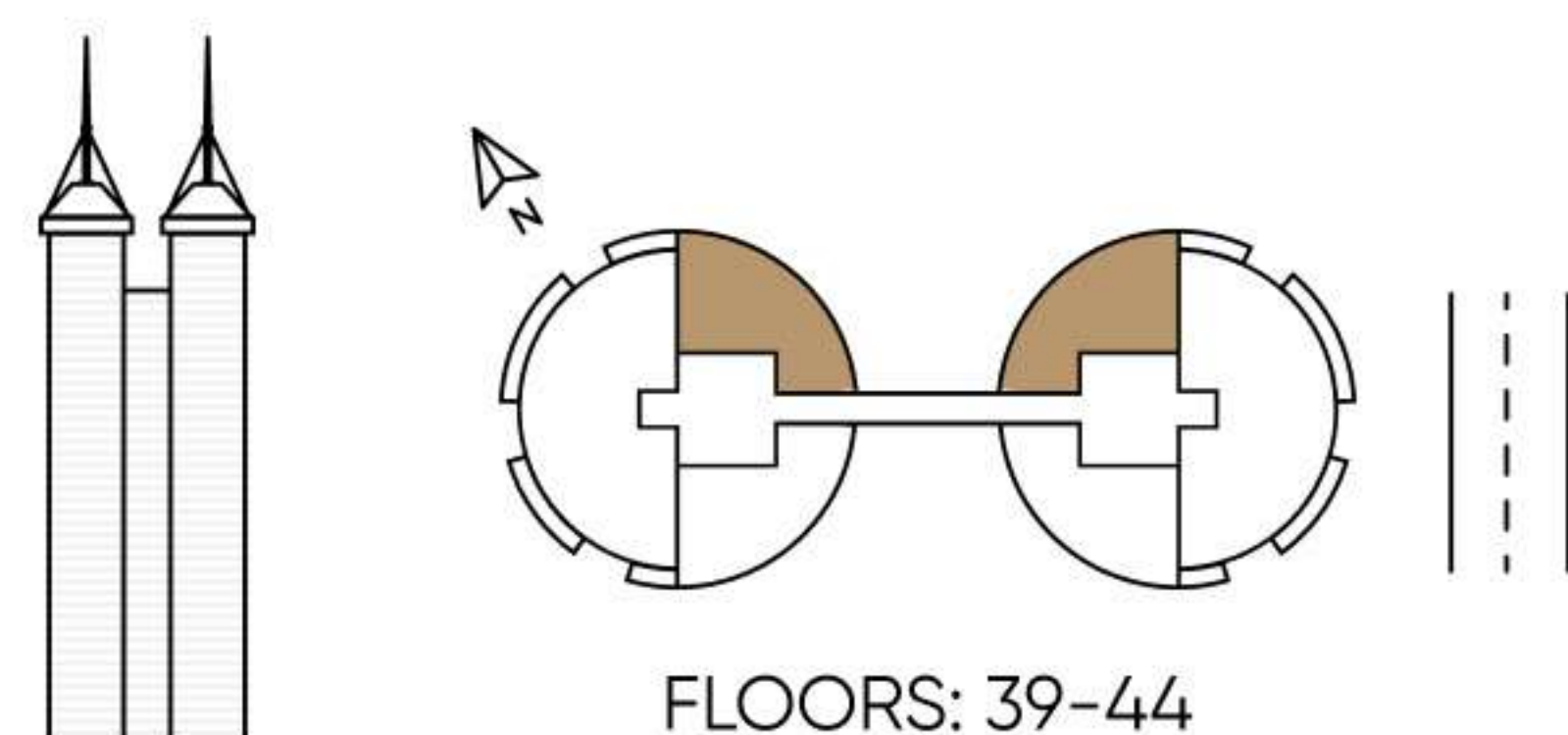
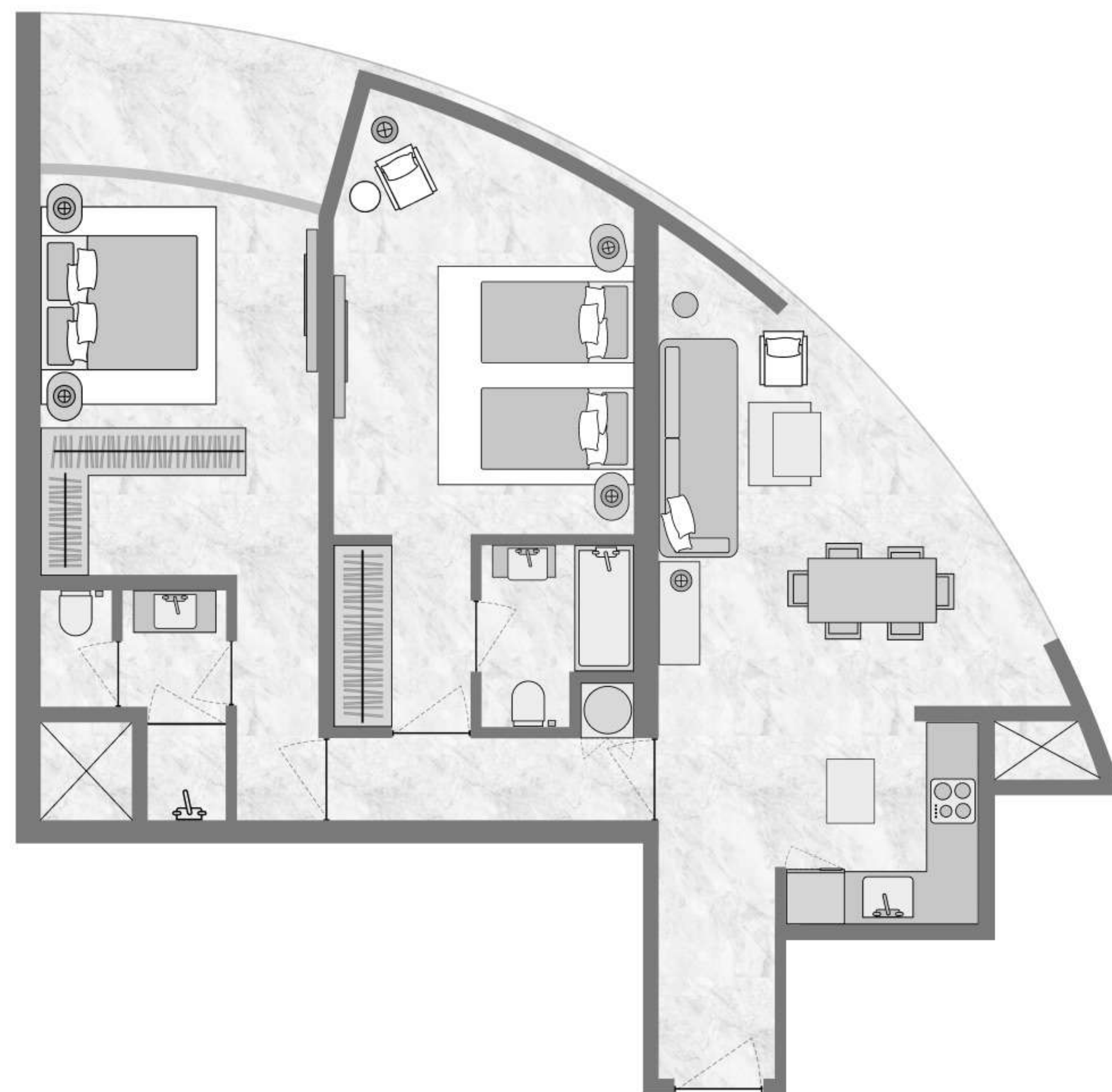
ATMOSPHERE COLLECTION

Bedrooms 2

Total area 973,81 SQ FT

Biltmore Sufouh

By GJ Real Estate



All drawings and sizes are approximate. Drawings are not to scale and can be changed without notice. The developer reserves the right to make changes. The blocks are taken from a typical building floor, and the dimensions of the columns may vary depending on the floor level. The furniture shown are for informational purposes only.

— AX —
CAPITAL

TYPE 2D-B

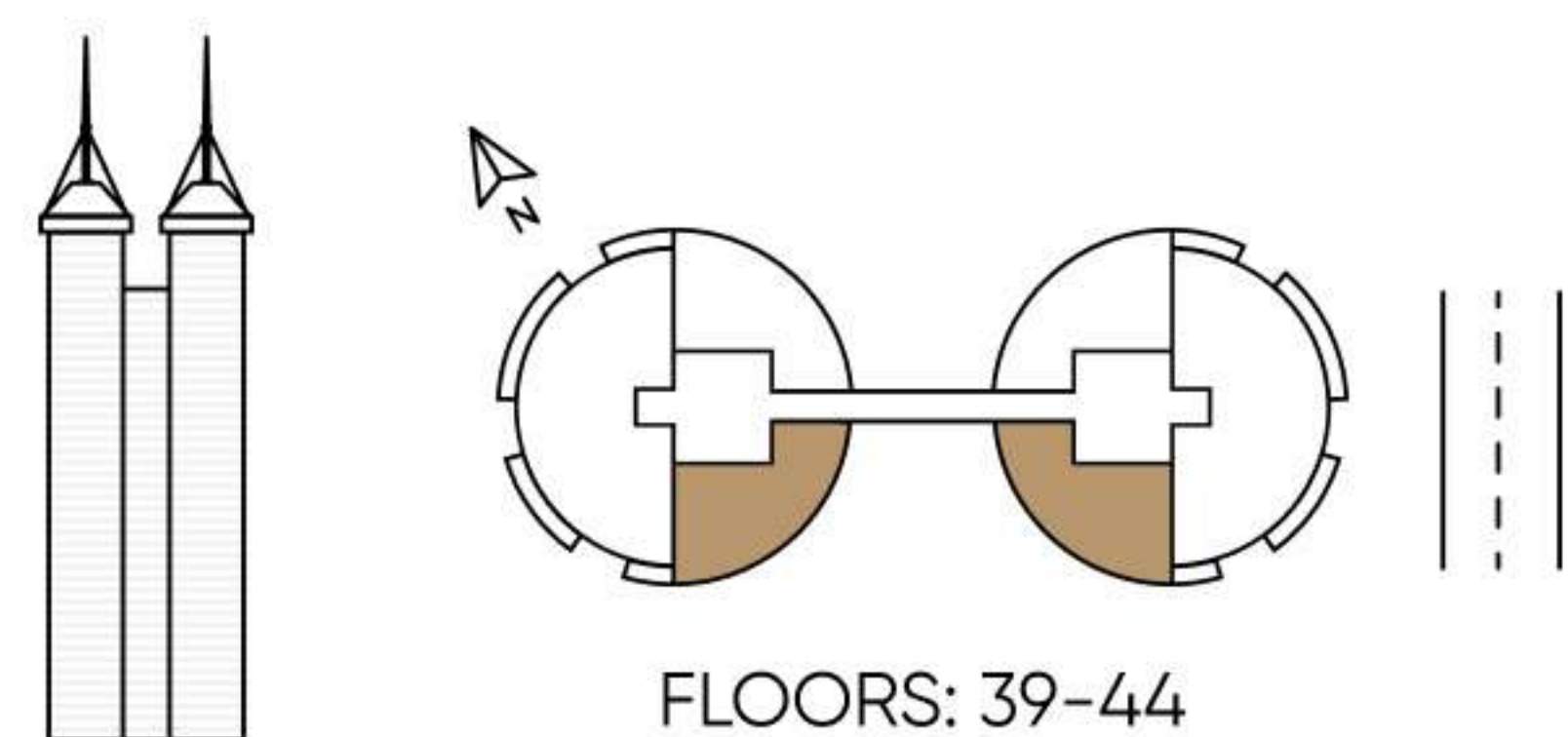
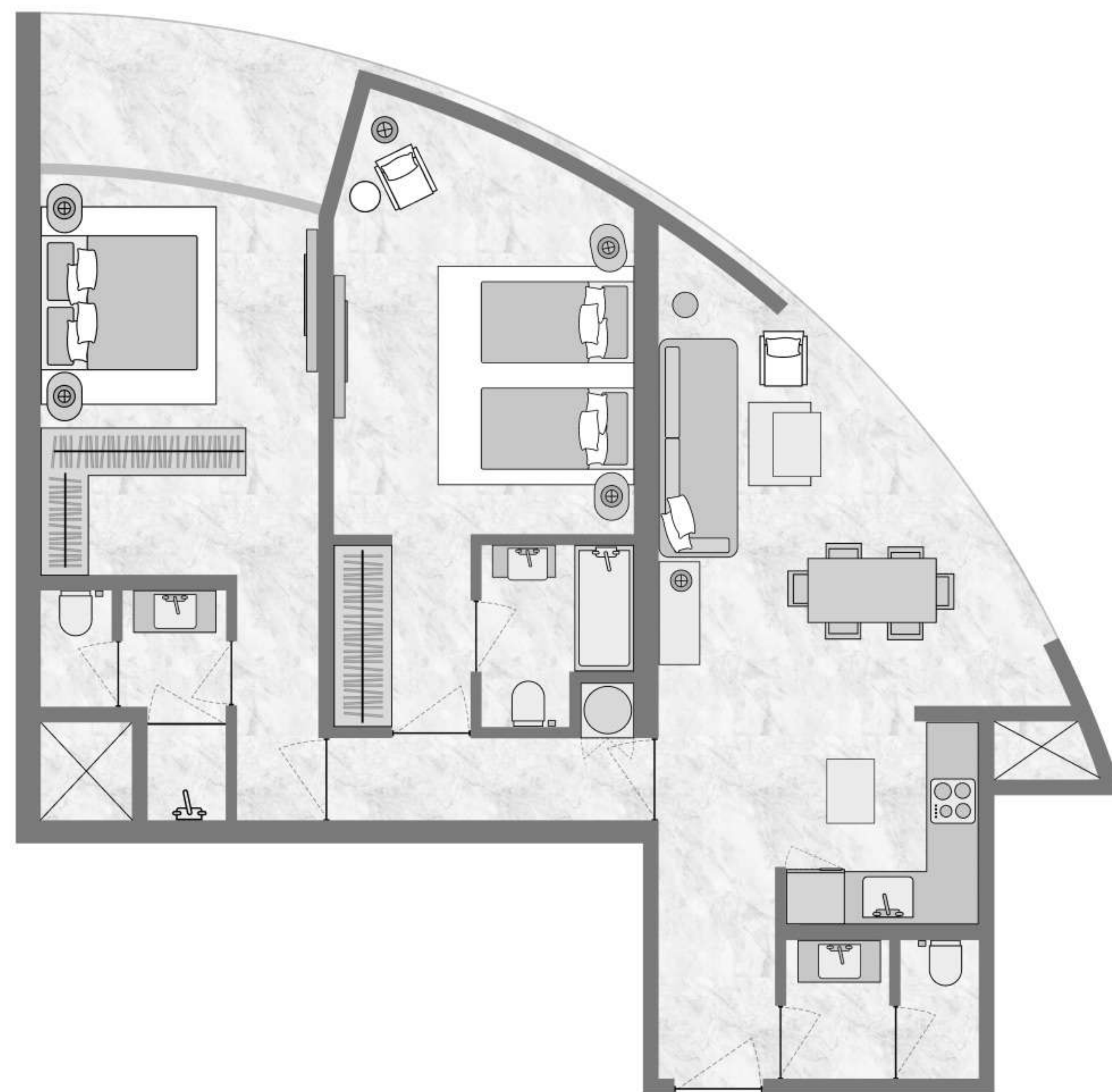
ATMOSPHERE COLLECTION

Bedrooms 2

Total area 1034,63 SQ FT

Biltmore Sufouh

By GJ Real Estate



All drawings and sizes are approximate. Drawings are not to scale and can be changed without notice. The developer reserves the right to make changes. The blocks are taken from a typical building floor, and the dimensions of the columns may vary depending on the floor level. The furniture shown are for informational purposes only.

— AX —
CAPITAL

TYPE 3A

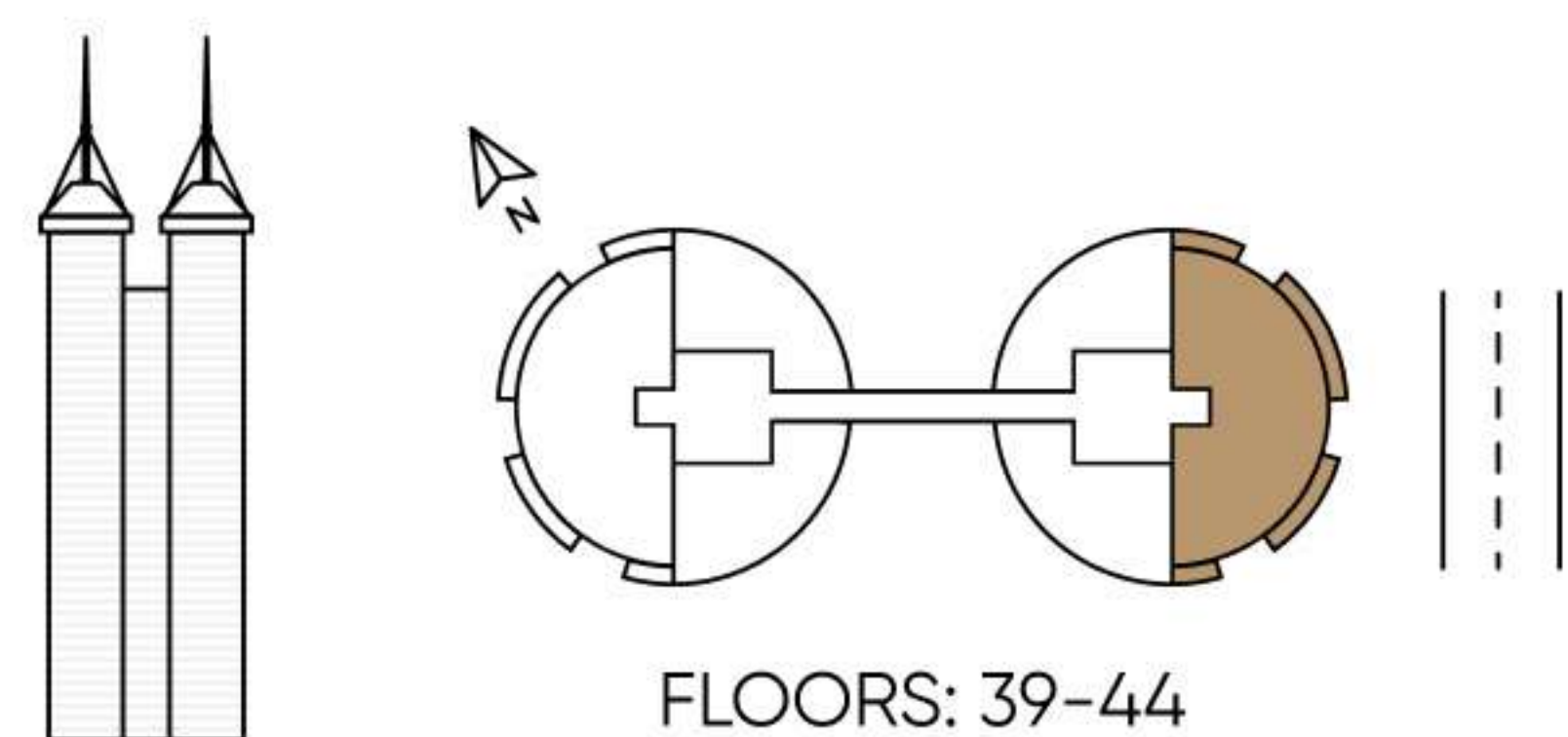
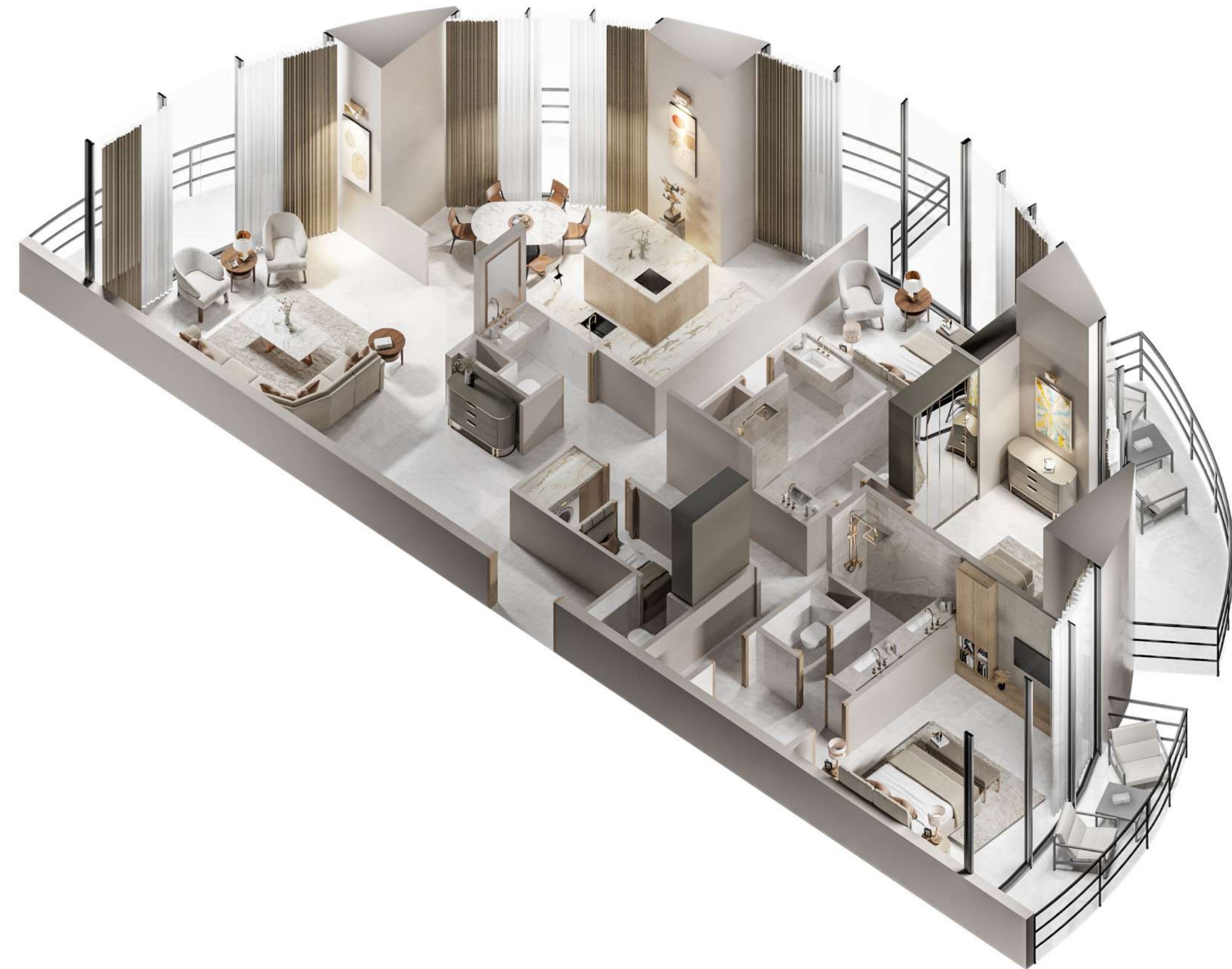
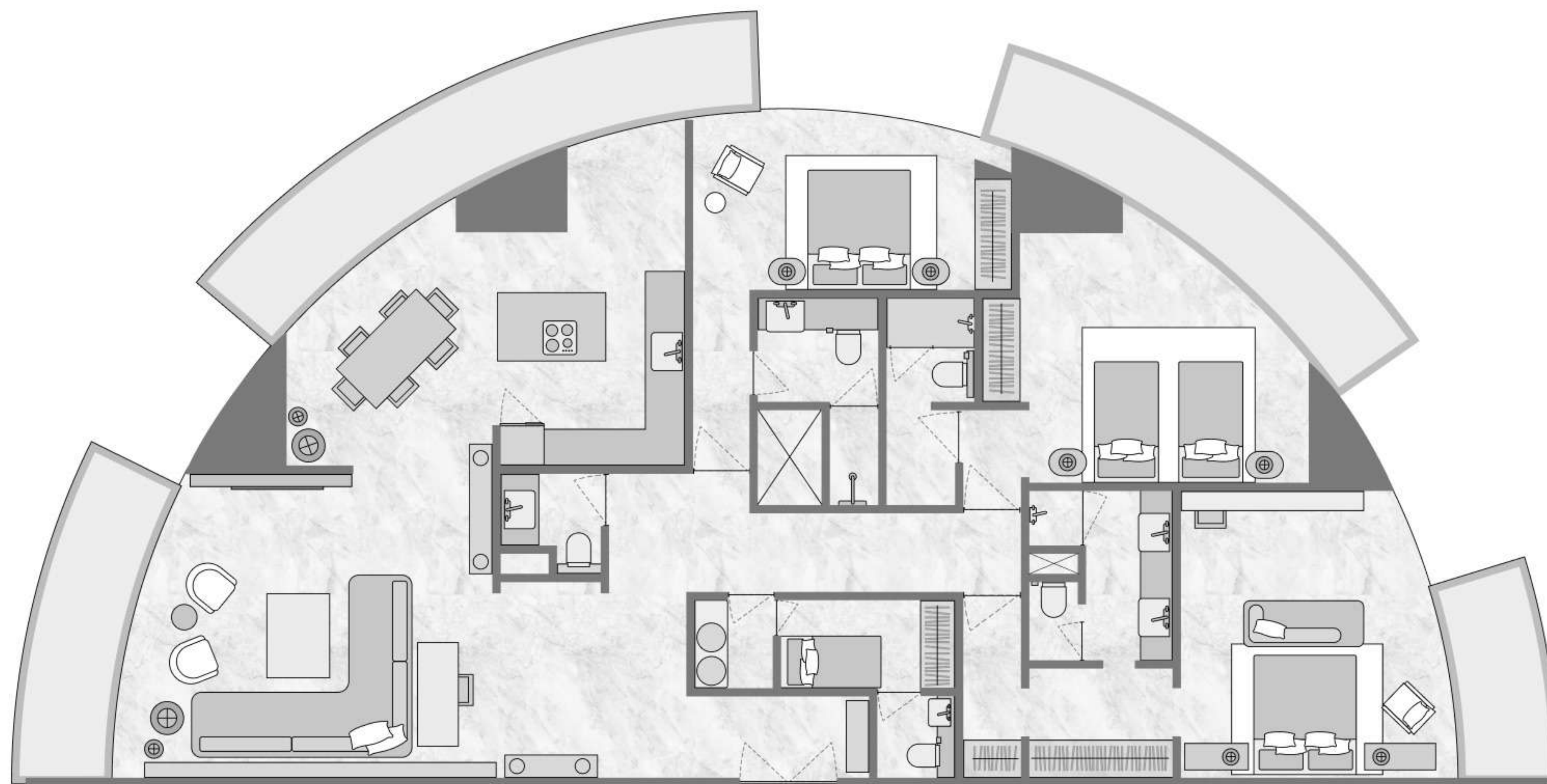
ATMOSPHERE COLLECTION

Bedrooms 3

Total area 2747,06 SQ FT

Biltmore Sufouh

By GJ Real Estate



FLOORS: 39-44

All drawings and sizes are approximate. Drawings are not to scale and can be changed without notice. The developer reserves the right to make changes. The blocks are taken from a typical building floor, and the dimensions of the columns may vary depending on the floor level. The furniture shown are for informational purposes only.

— AX —
CAPITAL

TYPE 3B

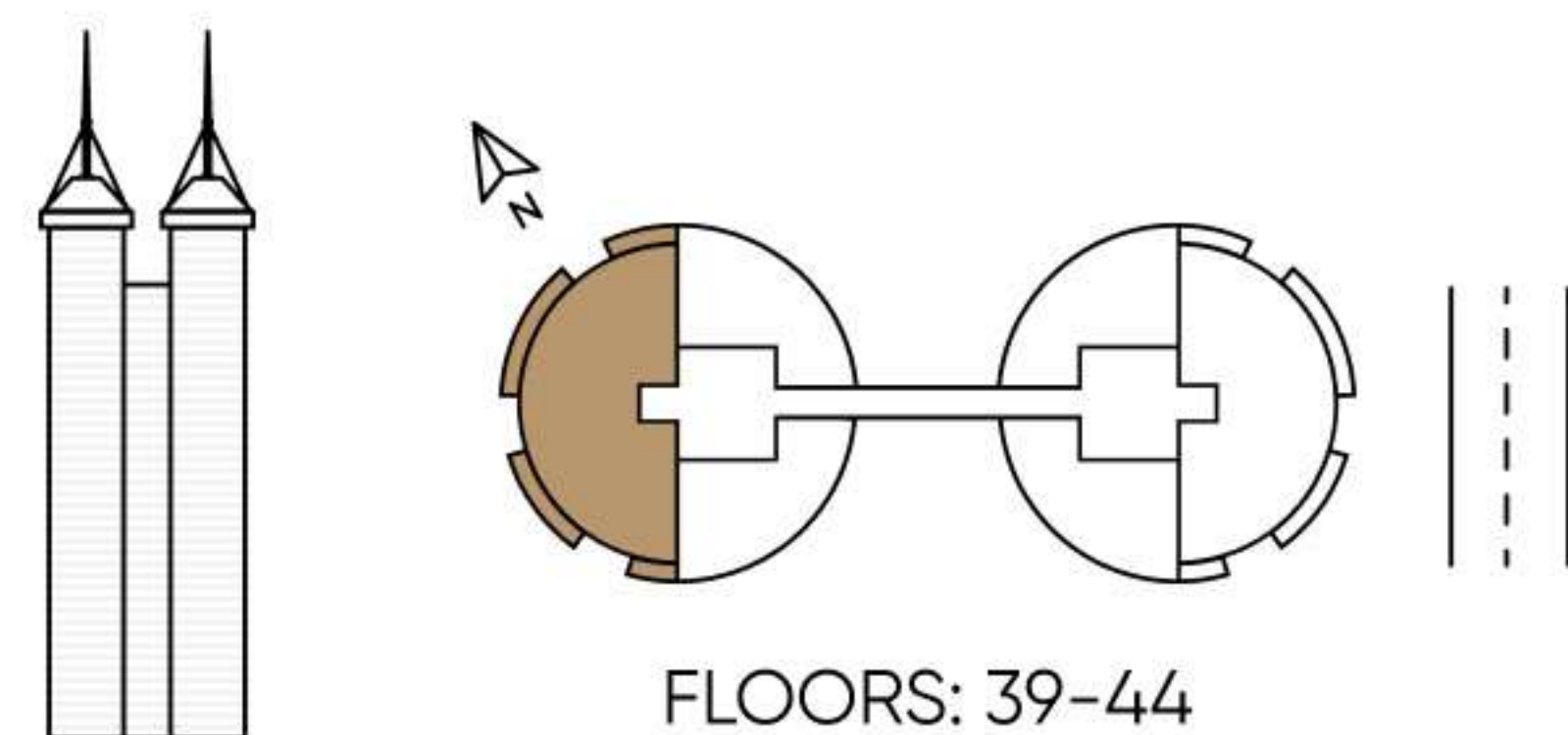
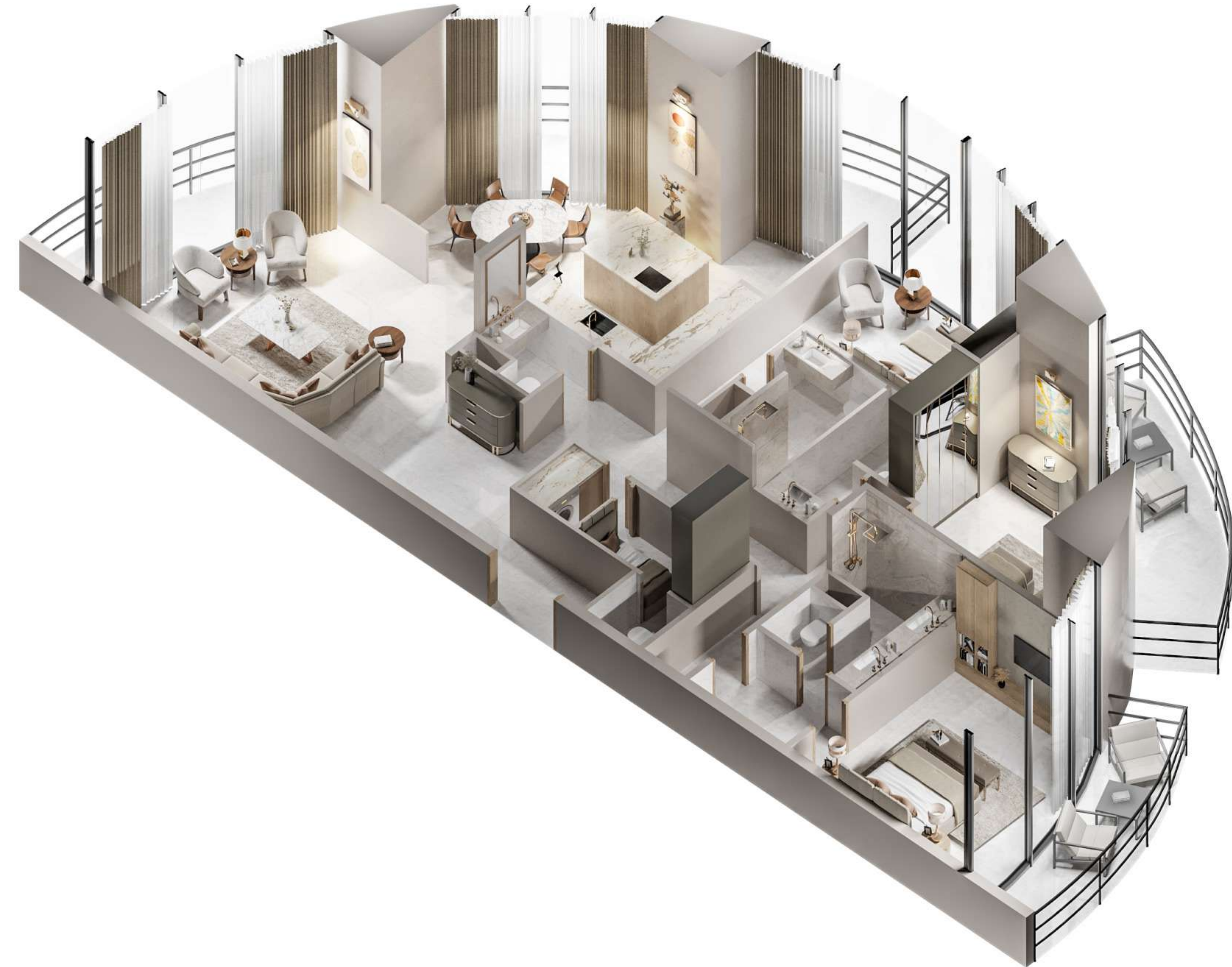
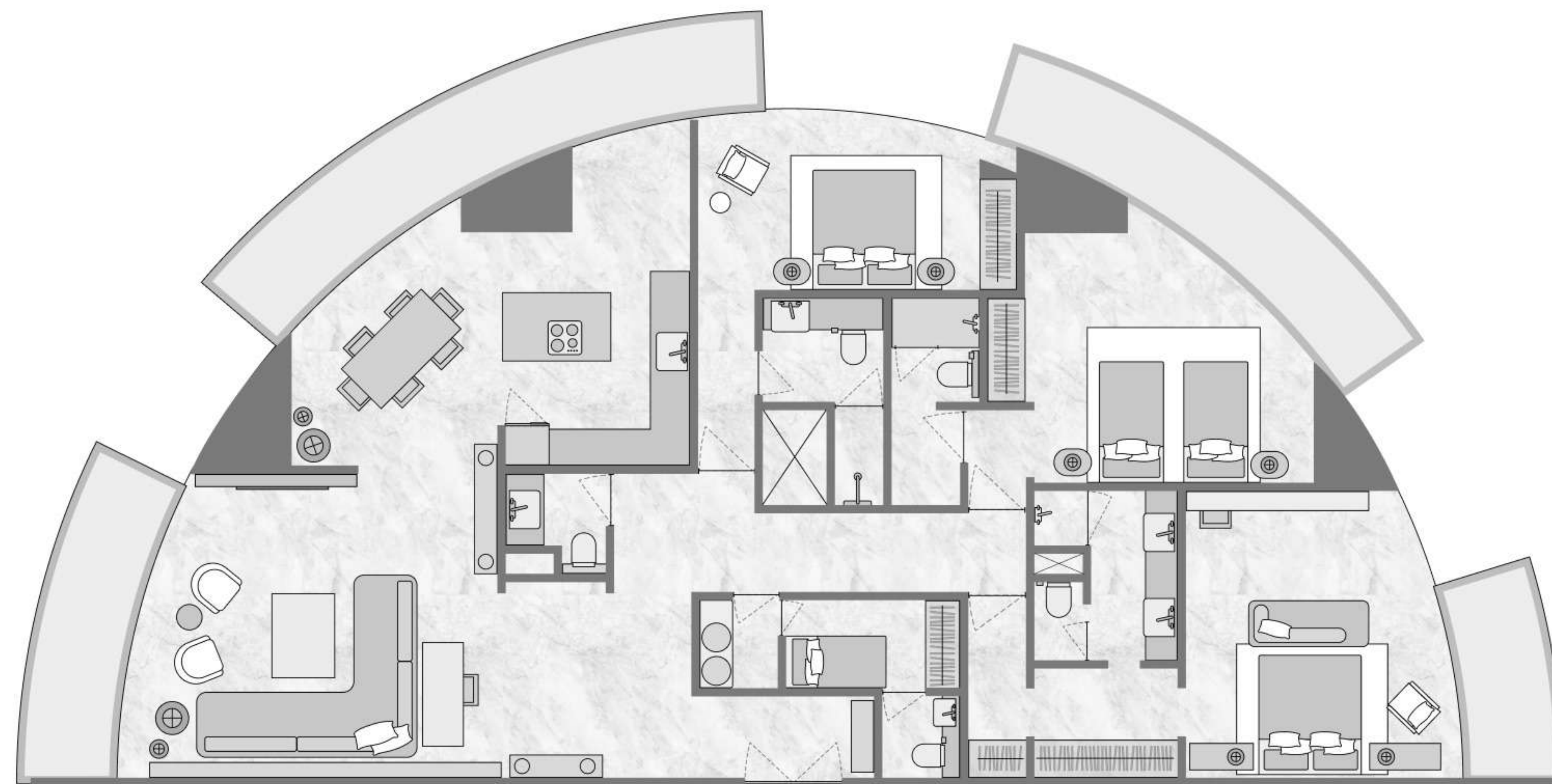
ATMOSPHERE COLLECTION

Bedrooms 3

Total area 2733,71 SQ FT

Biltmore Sufouh

By GJ Real Estate



All drawings and sizes are approximate. Drawings are not to scale and can be changed without notice. The developer reserves the right to make changes. The blocks are taken from a typical building floor, and the dimensions of the columns may vary depending on the floor level. The furniture shown are for informational purposes only.

— AX —
CAPITAL

AX CAPITAL

EXCLUSIVE SALES PARTNER

AX CAPITAL is an innovative real estate agency in the UAE. We unite investors' interests, curated properties, detailed expertise, technologies, and aesthetics in one place.

\$4 bln

SALES VALUE
SINCE 2019

500+

REAL ESTATE
SPECIALISTS FROM
40 COUNTRIES

0%

AGENCY
COMMISSION

BOOK YOUR UNIT NOW: +971 52 171 8769 [AXCAPITAL.AE](https://www.axcapital.ae)



THE BILTMORE

RESIDENCES SUFOUH