

# Galaxy<sup>★</sup>

[www.galaxyrealty.com](http://www.galaxyrealty.com)

# JARDIN

## ASTRAL

Jumeirah Garden City



## LIFE IN THE GARDEN OF STARS

Jardin Astral is an ultra-luxury, garden facing, designer apartment complex, with 46 exclusive homes in the heart of Jumeirah Garden City: just under fifteen minutes from Dubai's most iconic urban centres.

Finely balanced between the vibrant life of the city and a calm, green, walkable community, and appointed with the most luxurious amenities, this is your home nestled in the best of many worlds. This is your Galaxy.



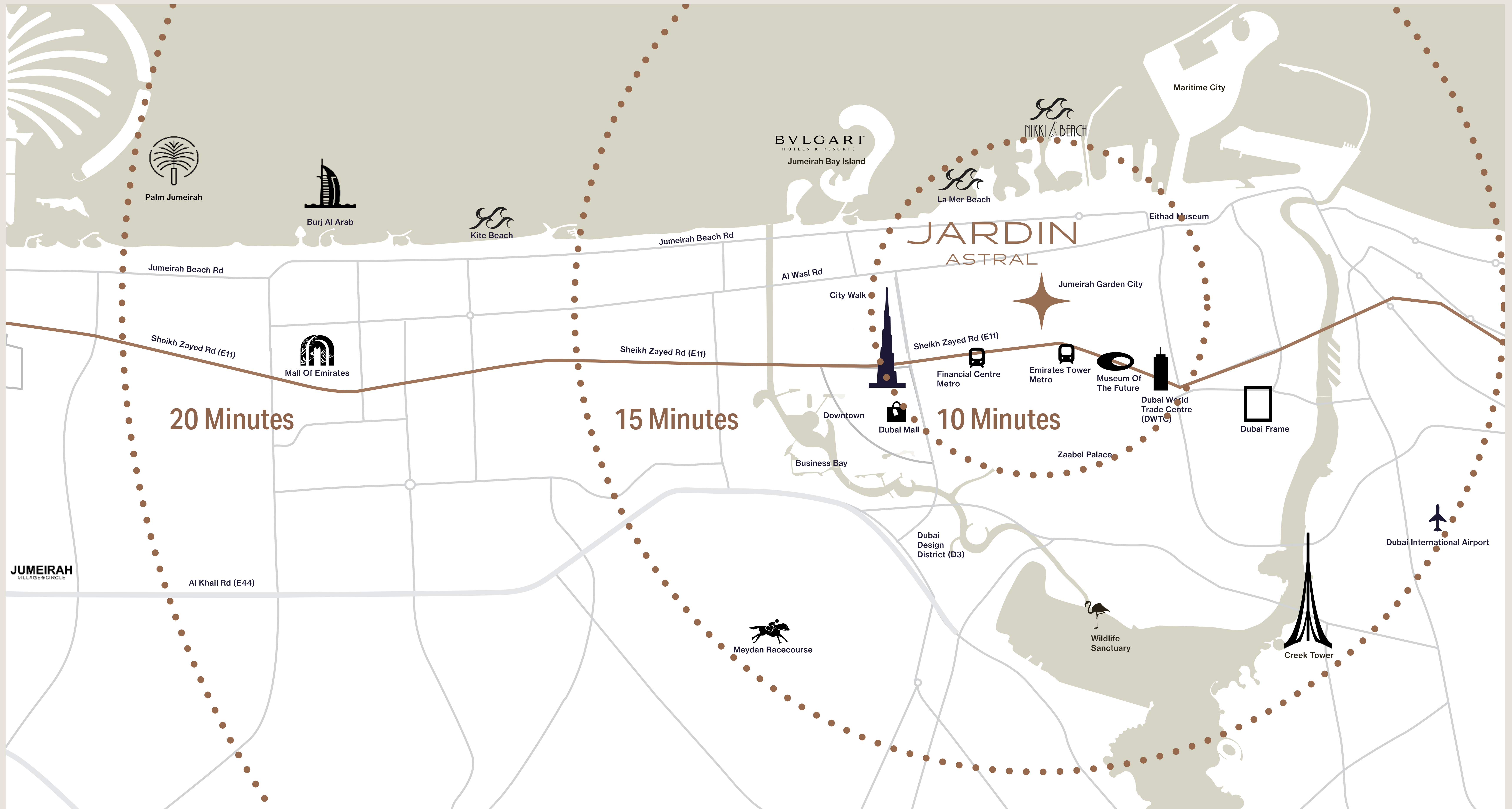
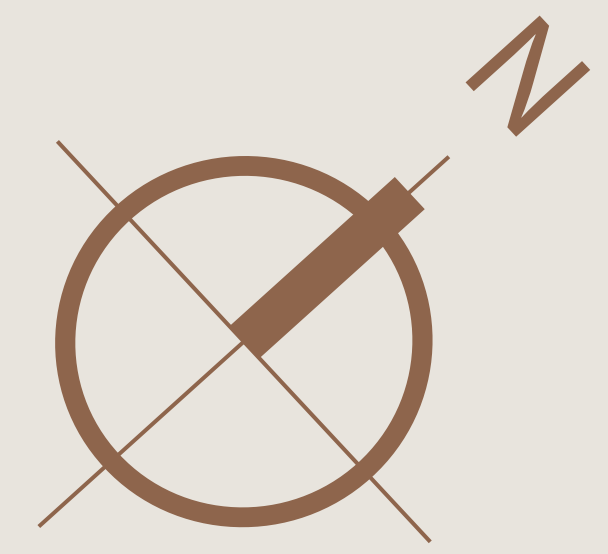
✦ Location

## LIFE IN THE CENTRAL ORBIT

Living in Jardin Astral, you are a quick walk or short drive away from every landmark, and centers of activity. Downtown Dubai, International Airport (DXB), City Walk, World Trade Center, Jumeirah Beach, and more.



✦ Central Hub



## JUMEIRAH GARDEN CITY

Jumeirah Garden City is the evergreen heart of Dubai, under visionary redevelopment for prime residential use. Its low-density master plan with great walkability, charming character, and large community parks attract the top tier of the city's global society and culture.



✦ Architecture

## INSPIRED FLUIDIC DESIGN

The exterior and interior lines forming Jardin Astral are inspired by the northern lights, comets and meteor showers: streaks of light, stellar curves and space-age fluidic contours echo some of the most contemporary global architectural design.

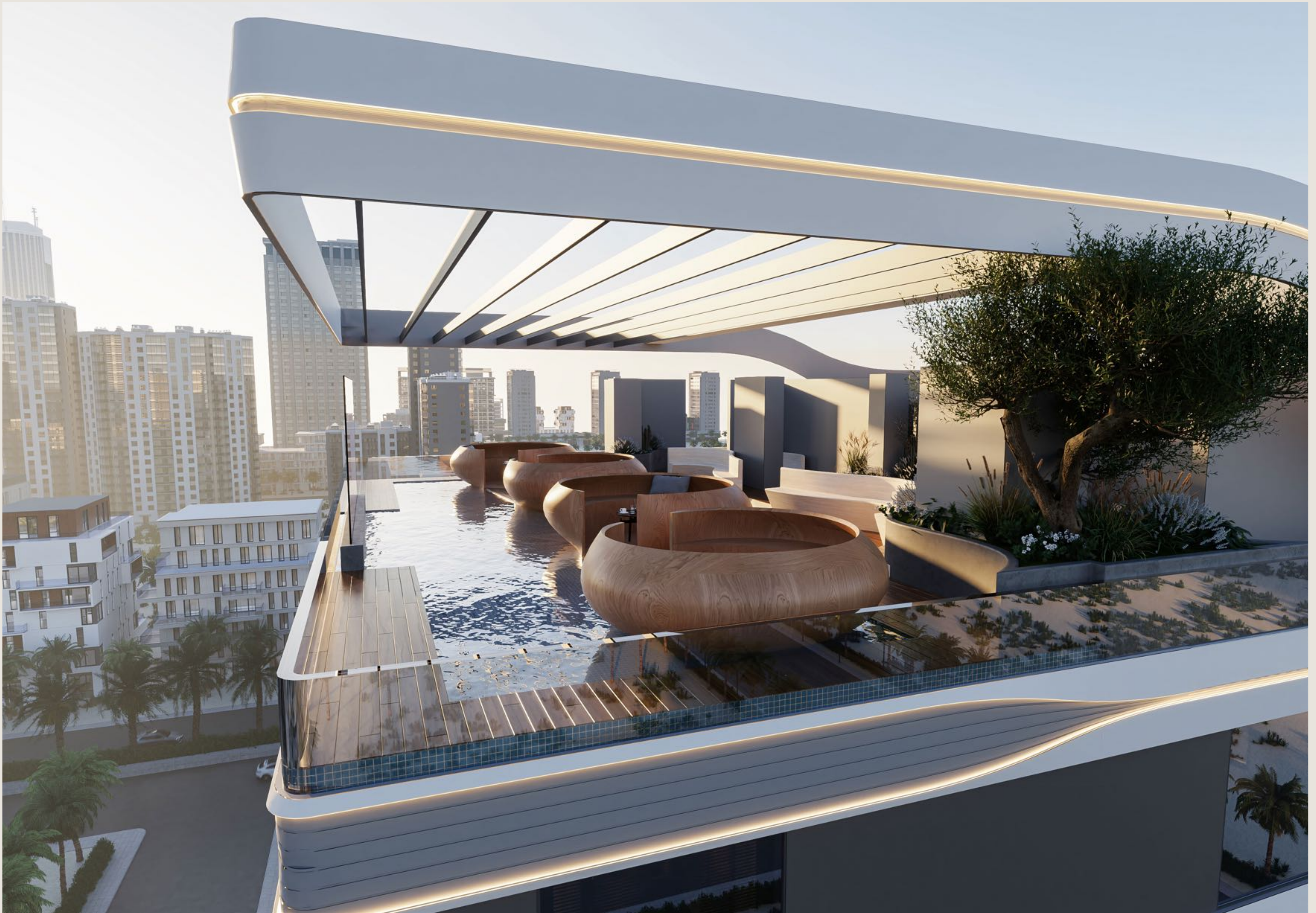






The distinct fluidic design encapsulates multilevel parking and eight floors of residence.





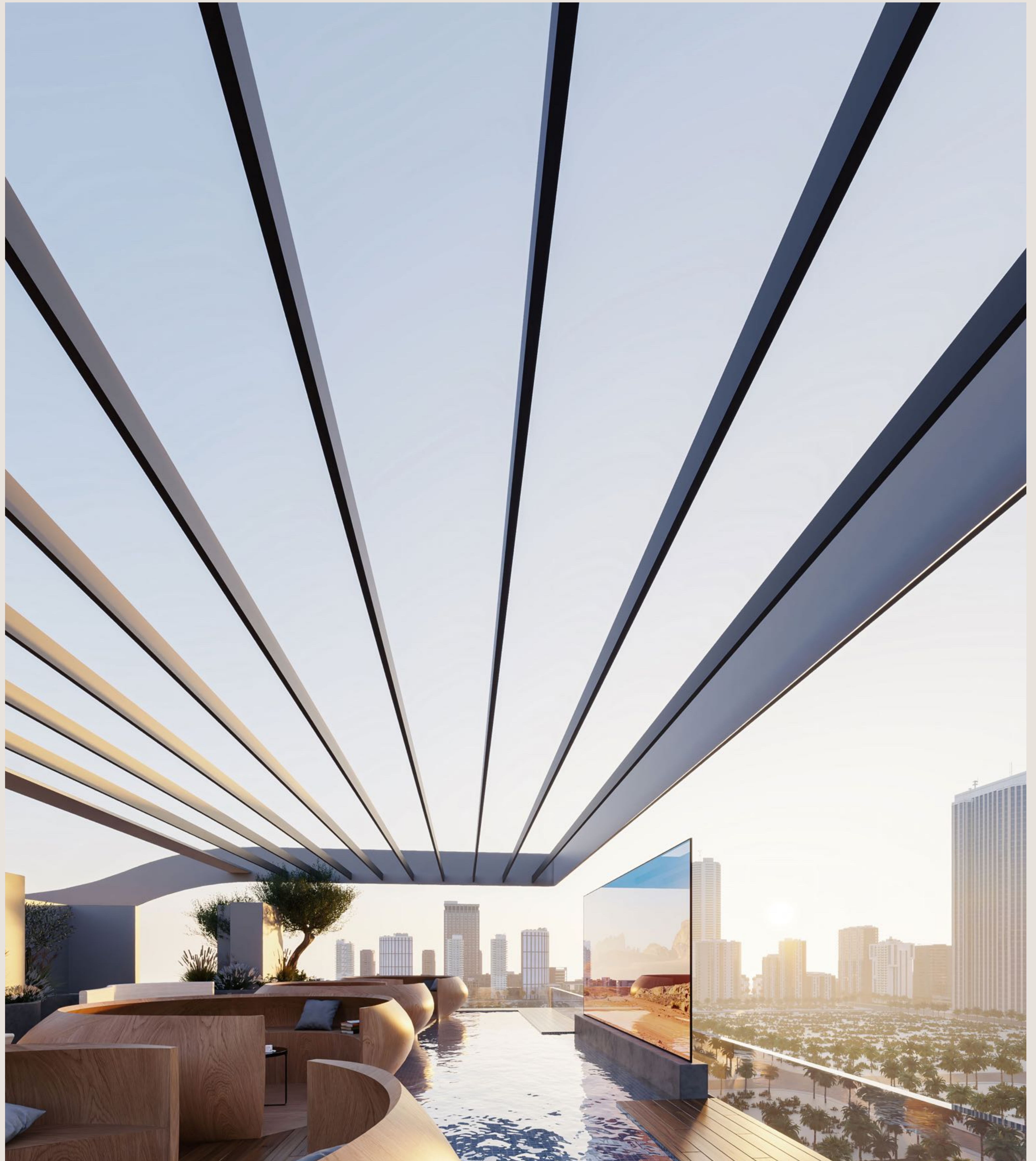
The Club House on the first floor with swimming pool and sunken seating and workstations offers a great view of the park.



✦ Leisure & Amenities

## GARDEN OF STARS ON EARTH

This is a star-studded garden facing property: with a first floor club house, swimming pool/ sun deck for work and play, four exclusive apartments with large private terraces, and a rooftop gazebo with a starry night-time display.



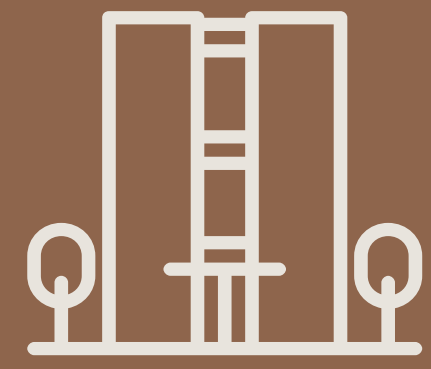


Rooftop Aqua Lounge/ Silent Cinema



View From Park Facing Apartment

## ✦ Project Features



Facade Illumination



Central Hub



Club House



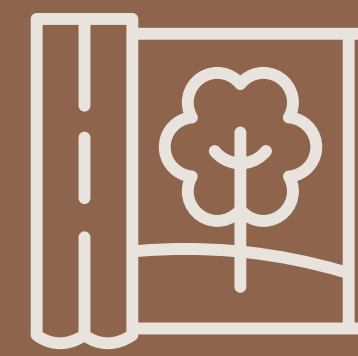
Work+Play Features



Smart Home  
Integration



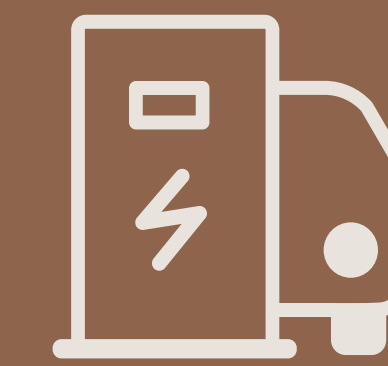
Starlit Lobby



Garden View  
Options



Apartments With  
Private Terraces

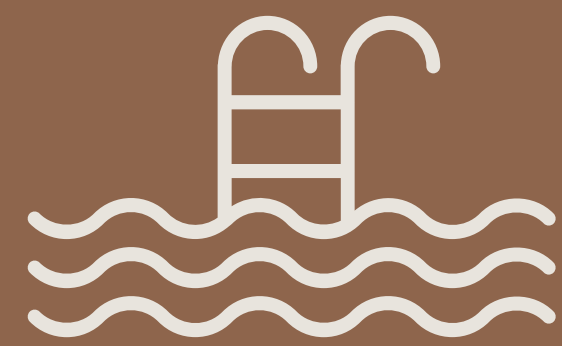


EV Charging  
Stations

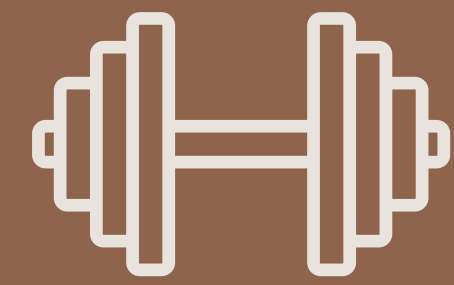




✦ Club House Features



Swimming Pool



Gym



Work Stations



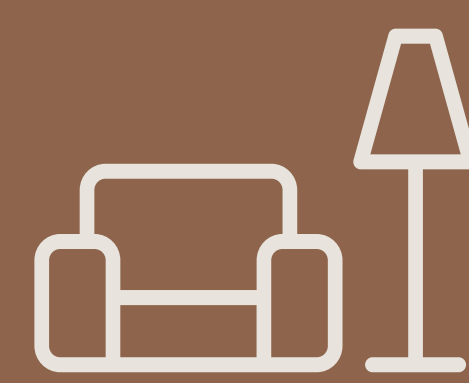
Silent Cinema



Juice Bar



Library



Lounges



Sauna



Steam Bath



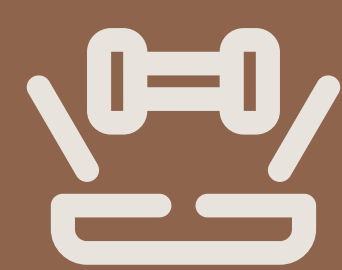
BBQ Area



Sunken Pool  
Seating



Rooftop Aqua  
Lounge



Digital Fitness



First Floor Swimming Pool/ Sun Deck

## STYLE, LUXURY & RELIABILITY

The interiors are finished and fitted using top grade materials and surfaces, with great attention to detail. They are well-appointed with the latest technology and appliances by world-leading brands in flooring, kitchens, plumbing and electronics.



Club House Lounge



Club House Work Station



Lobby Reception



Lobby Entrance



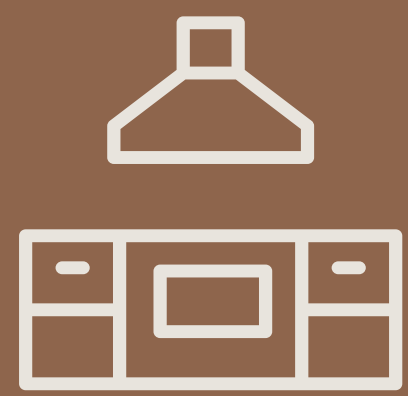
Rooftop Gym





Digital Fitness

## ✦ Apartment Features



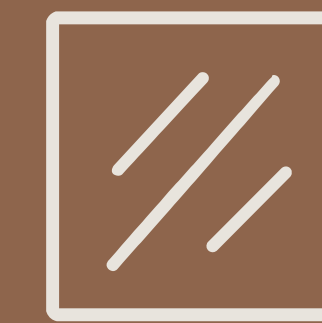
Fully Fitted Kitchen



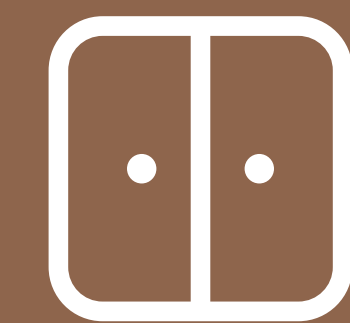
Bio Metric/ Finger  
Print Main Door  
Lock



Smart Home  
Automation



Floor To Ceiling  
Glass



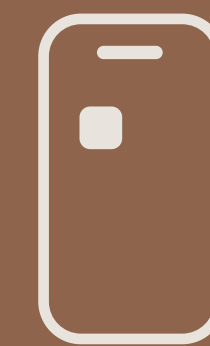
Fitted Wardrobes



Premium Branded  
Kitchen Appliances



Luxury Range  
Bath Fittings &  
Sanitaryware



Mobile App



Biometric Door  
Locks



Google Home



Thermostat Control







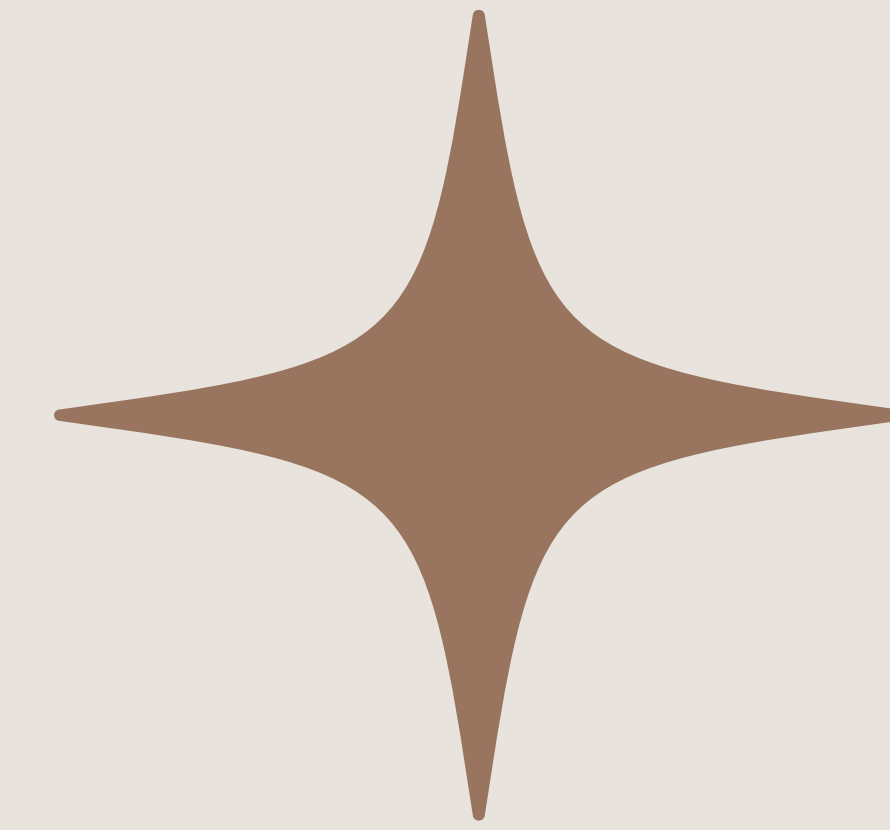








# YOUR BEACON OF LIGHT, GUIDING YOU HOME



We're 30 years and counting. Established in Kerala, India, in 1994, we aren't simply developing residences, but designing flourishing communities. Our landmark is an iconic representation of the soul of Galaxy Builders: an anchor to our foundational truths, a beacon of light guiding you home. We vow to be ever-adapting, continually evolving and tirelessly crafting galaxies that resonate across generations.

[www.galaxyrealty.com](http://www.galaxyrealty.com)

