



MARRIOTT RESIDENCES
JVC DUBAI

MARRIOTT®
RESIDENCES
JVC, DUBAI

MARRIOTT RESIDENCES JVC, DUBAI





IMAGINE LIVING HERE

As the first Marriott® branded residence in Dubai, Marriott Residences JVC, Dubai, welcomes you home to effortless living, inspired by the Marriott experience.

The Residences provide an escape from runways and walkways to a home of privacy, luxury and convenience. The first-of-its-kind home for the global citizen.

Ensuring everything you will ever need is all within reach. Whether you're working from home, entertaining guests, enjoying a spa day, or getting fit, it's all available at The Residences.

Your sanctuary in the heart of Dubai, this is your place, your style.





AT HOME, IMPECCABLE SERVICE

With elegant design-led residences matched to your unique preferences, The Residences offer year round living and relaxation with amenities and services that pamper and rejuvenate.

Owners benefit from dedicated professional staff, including global concierge services, in-residence dining, first-class fitness classes and recreation, daily housekeeping and a selection of à-la-carte amenities personalised just for you.

As a Residences owner, your personal preferences are attended to by a dedicated team of professionals offering you unmatched service and sophisticated amenities you've come to know and love.





THE CONVENIENCE OF HOTEL-INSPIRED LIVING IN THE COMFORT OF YOUR HOME

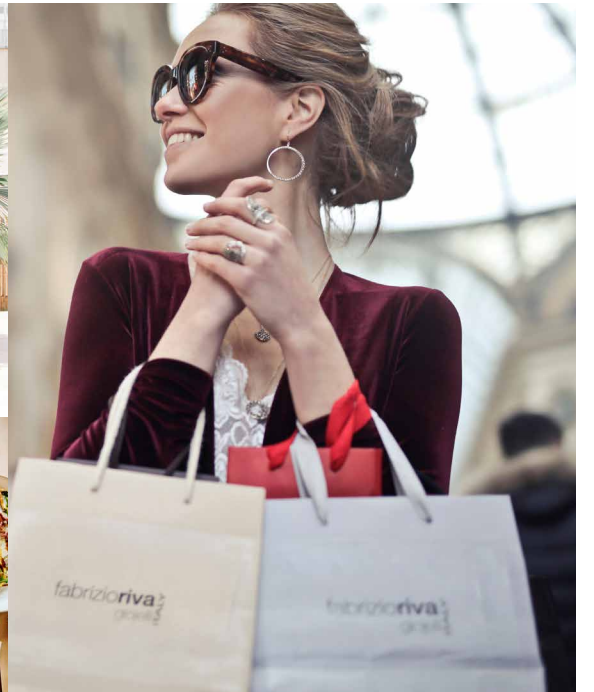
Establish yourself in Dubai at our first-of-its-kind residences with dedicated staff and signature amenities on-site.

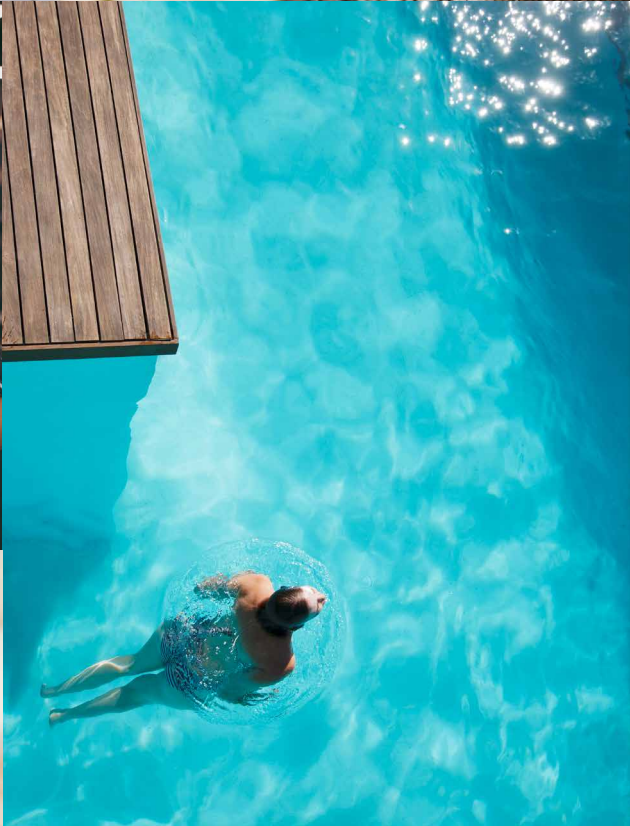
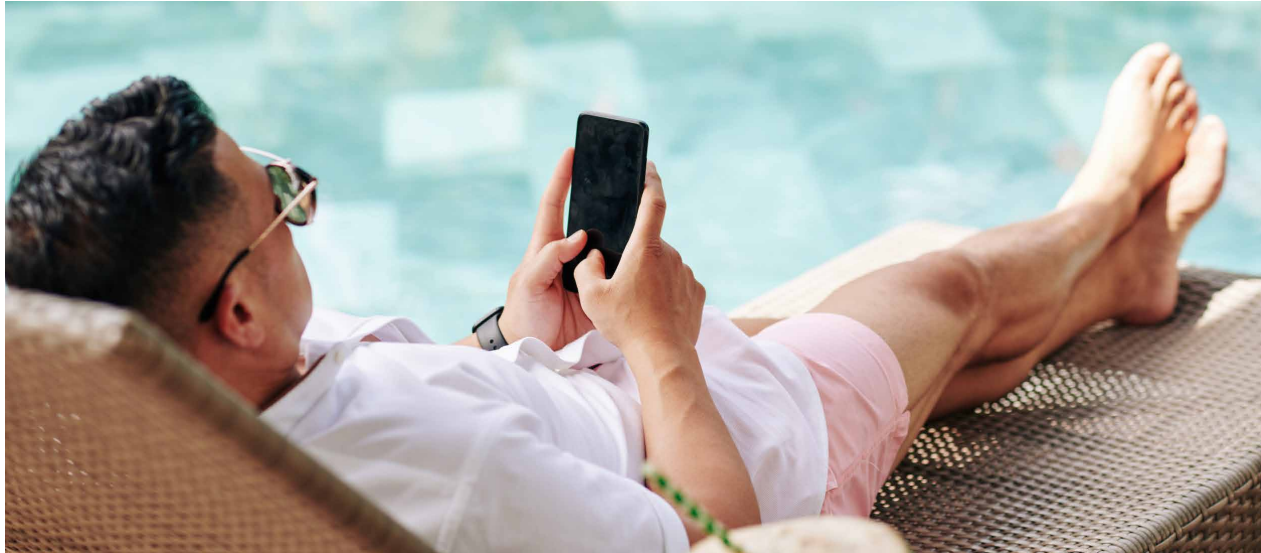
The Residences offers full-suite services 24 / 7, 365 days-a-year including food and beverage offerings on-site and in-residence dining.

Return home to in-residence dining and recover with leisure and recreational activities to inspire the mind.

Tailored à la carte services to meet your needs. Choose from grocery shopping, pet care, delivery services and valet cleaning, to valet parking, limousine reservations and more.

Invalidate the body and refresh the soul at the on-site fitness centre.





AMENITIES FOR RESIDENCE OWNERS ENJOYMENT:

- Residential pool
- Pool deck with lounge
- Gym
- Multipurpose podium level including a kids play area
- Beautifully landscaped gardens

PAY-AS-YOU-GO CONCIERGE SERVICES TO CHOOSE FROM:

- Airport / ground transportation arrangements
- Automobile rental reservations
- Shopping information
- Ordering floral arrangements
- Delivery services
- Hotel reservations
- Tour bookings
- Move-in coordination
- Airline / private air reservations
- Limousine / car service reservations
- Restaurant information / reservations
- Spa & salon reservations
- Theatre & entertainment information
- Doorman / porter services
- Newspaper / magazine / package delivery
- Parking & Valet parking





THIS WAY HOME...

Jumeirah Village Circle boasts exciting shopping and dining experiences for singles, couples and families. The Mall of the Emirates offers a range of fun activities including the Dreamscape VR Park, VOX Cinemas, Ski Dubai and more. In addition, opulent nightclubs of Dubai Marina, the cafes of JBR and the eateries in JLT are all within a short driving distance from Jumeirah Village Circle. For a night out with drinks and games, head over to the famous sports bars in Dubai Sports City.



LOCATION

Located in Jumeirah Village Circle, a diverse community in the heart of Dubai



Dubai Autodrome
10 Minutes



Mall of the Emirates
10 Minutes



Dubai Marina
10 Minutes



Downtown Dubai
& Burj Khalifa



Palm Jumeirah
18 Minutes



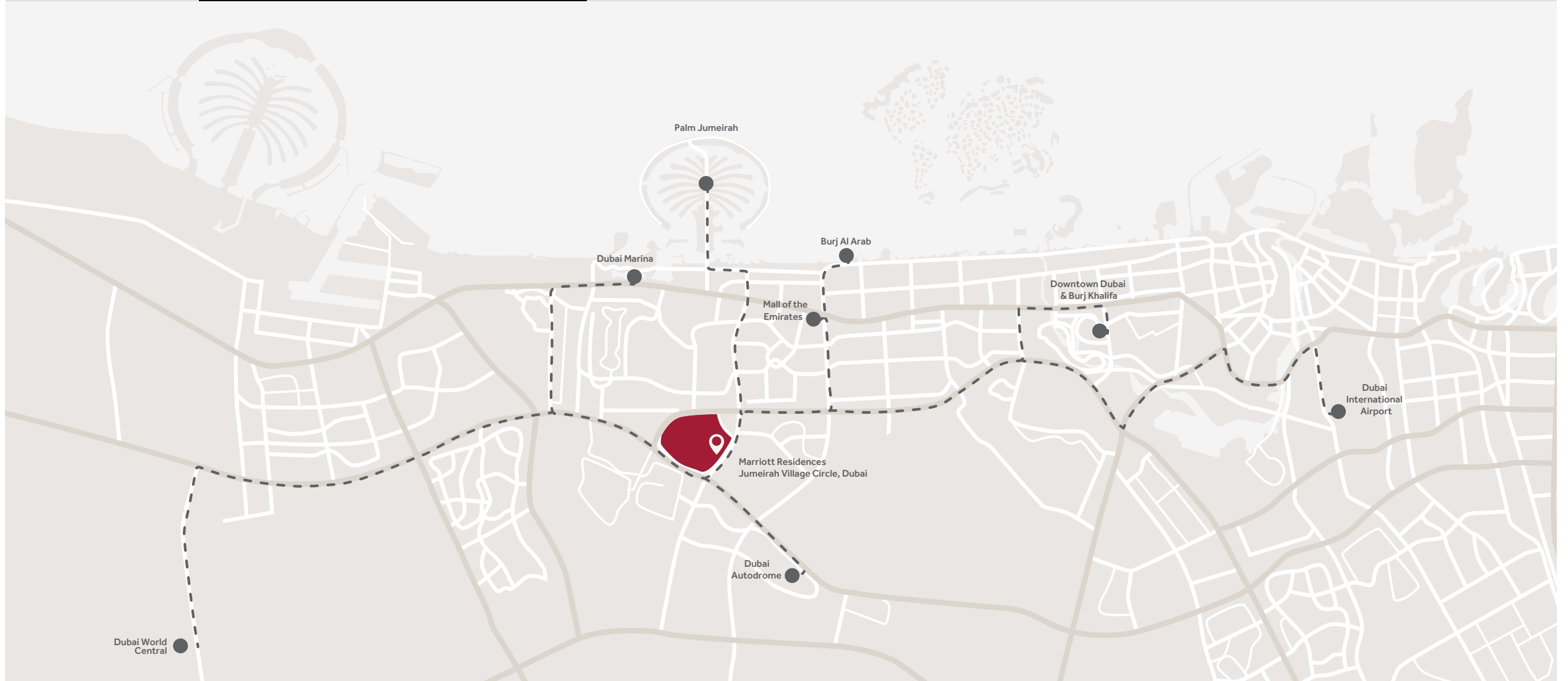
Jumeirah Beach
28 Minutes



Dubai World Central
30 Minutes



Dubai International Airport
30 Minutes





DESIGNED TO INSPIRE AND REJUVENATE THE BODY AND MIND

Marriott Residences JVC, Dubai are thoughtfully designed to inspire and rejuvenate the body and mind in well-crafted and breathtaking style.

Stay home and let your mind travel.

Your home should be the ultimate expression of self.

That's why The Residences are designed with your contemporary style in mind.

With minimal lines and contrasts between rugged and polished finishes, no detail has been overlooked in this new standard of living for the working professional.

Feel pampered, but never cluttered in your private space, furnished with exquisite interiors and premium quality appliances.

Couched in convenience and caressed by sophistication, The Residences is a living space in cadence with your urban rhythm.





ELITE MARRIOTT BONVOY MEMBERSHIP

Residences owners qualify for premium benefits including complimentary status in Marriott Bonvoy. Owners can enjoy exclusive savings, room upgrades, reservation assistance and many other amenities at nearly 8,000 properties around the world.







FLOORPLAN

FOR THE PROFESSIONAL WHO VALUES SIMPLICITY

Choose from 15 pre-designed floorplans to suit your unique sense of style.

With studio, 1-bedroom and 2-bedroom homes on offer, step effortlessly into year-round living or part-time residency.





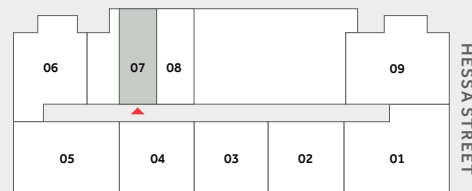
TOWER 1

EXECUTIVE SUITE

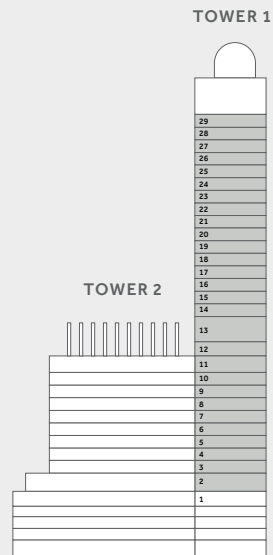
FLOOR 2 - 29

UNIT 7

TOTAL AREA 467.70 SQFT (43.45 SQM)



KEY PLAN



KEY SECTION



FLOOR PLAN

1. All dimensions are in metric, and measured from finish to finish excluding construction tolerances.
2. All materials, dimensions, and drawings are approximate only.
3. Information is subject to change without notice, at developer's absolute discretion.
4. Actual area may vary from the stated area.
5. Drawings not to scale.
6. All images used are for illustrative purposes only and do not represent the actual size, features, specifications, fittings, and furnishings.
7. The developer reserves the right to make revisions / alterations, at it's absolute discretion, without any liability whatsoever.



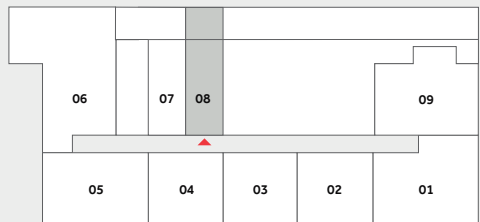
TOWER 1

EXECUTIVE SUITE

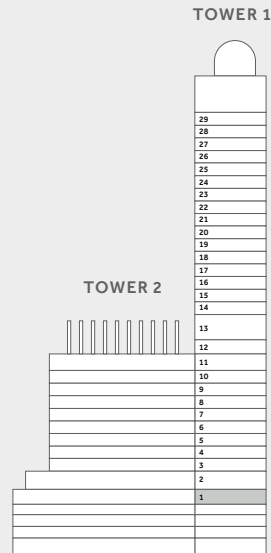
FLOOR 1

UNIT 8

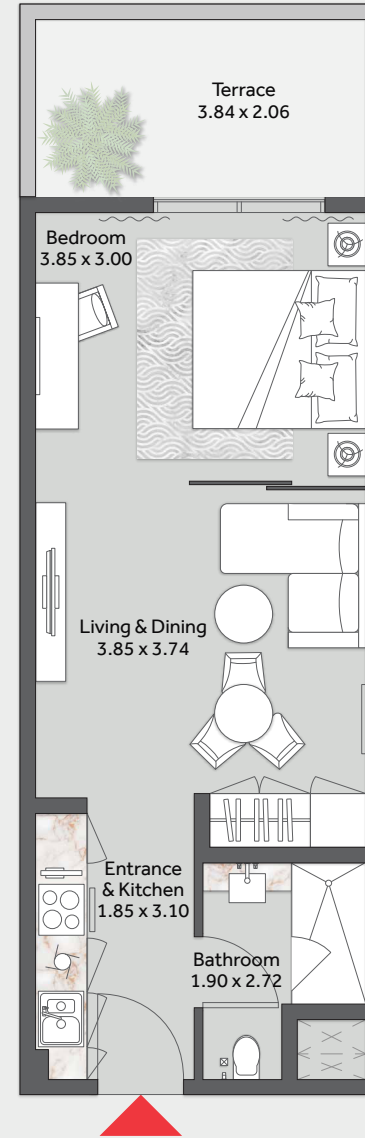
SUITE AREA	466.30 SQFT (43.32 SQM)
TERRACE	105.38 SQFT (9.79 SQM)
TOTAL AREA	571.68 SQFT (53.11 SQM)



KEY PLAN



KEY SECTION



FLOOR PLAN

1. All dimensions are in metric, and measured from finish to finish excluding construction tolerances.
2. All materials, dimensions, and drawings are approximate only.
3. Information is subject to change without notice, at developer's absolute discretion.
4. Actual area may vary from the stated area.
5. Drawings not to scale.
6. All images used are for illustrative purposes only and do not represent the actual size, features, specifications, fittings, and furnishings.
7. The developer reserves the right to make revisions / alterations, at it's absolute discretion, without any liability whatsoever.



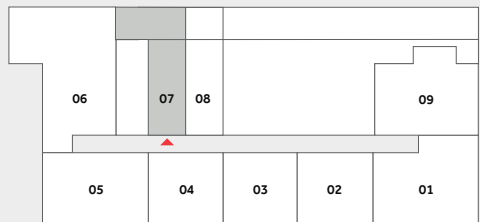
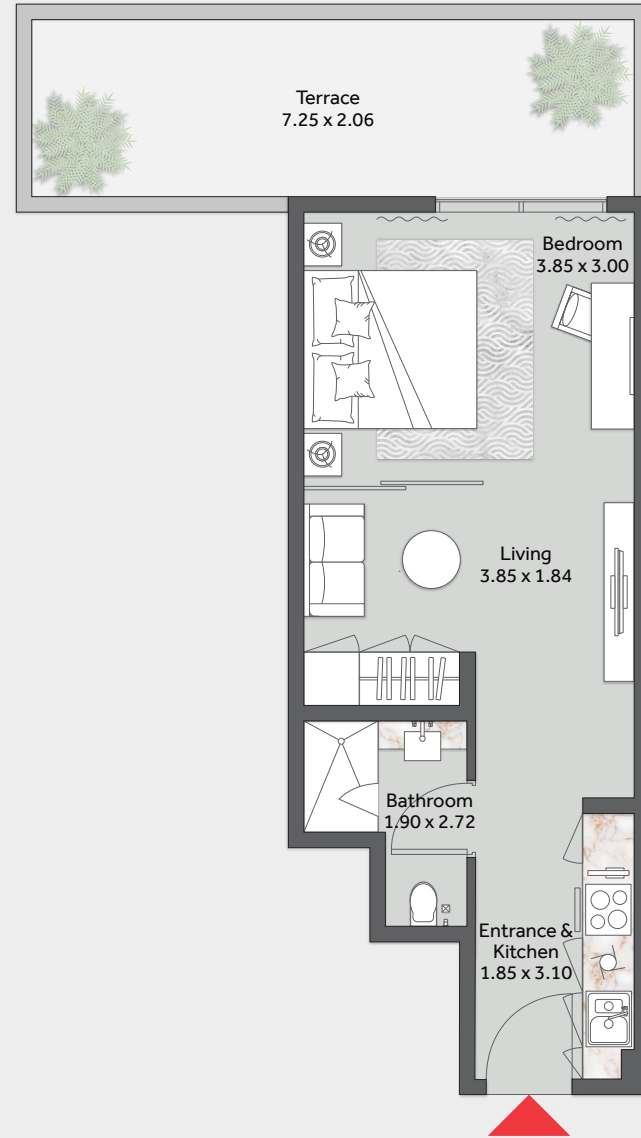
TOWER 1

EXECUTIVE SUITE

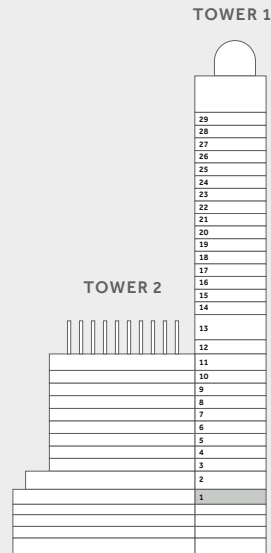
FLOOR 1

UNIT 7

SUITE AREA	423.24 SQFT (39.32 SQM)
TERRACE	193.21 SQFT (17.95 SQM)
TOTAL AREA	616.45 SQFT (57.27 SQM)



KEY PLAN



KEY SECTION

FLOOR PLAN

1. All dimensions are in metric, and measured from finish to finish excluding construction tolerances.
2. All materials, dimensions, and drawings are approximate only.
3. Information is subject to change without notice, at developer's absolute discretion.
4. Actual area may vary from the stated area.
5. Drawings not to scale.
6. All images used are for illustrative purposes only and do not represent the actual size, features, specifications, fittings, and furnishings.
7. The developer reserves the right to make revisions / alterations, at its absolute discretion, without any liability whatsoever.



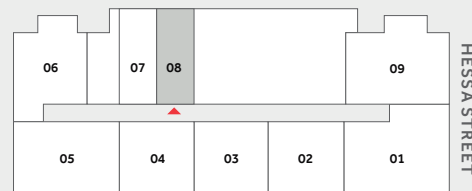
TOWER 1

EXECUTIVE SUITE

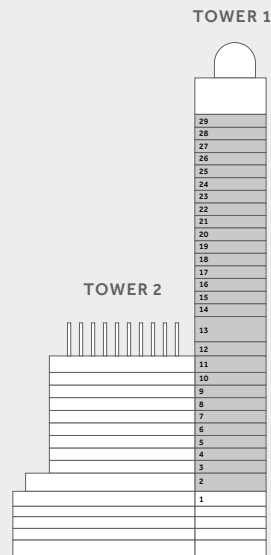
FLOOR 2 - 29

UNIT 8

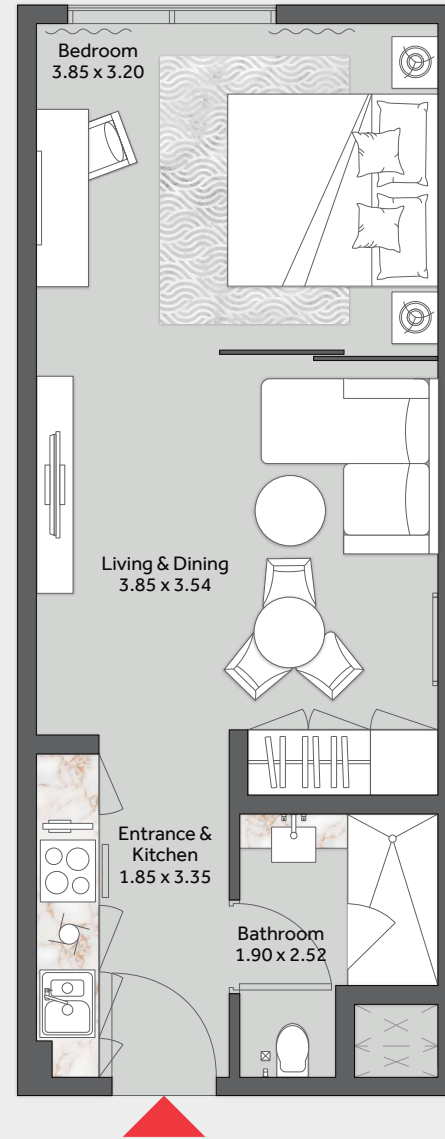
TOTAL AREA 471.89 SQFT (43.84 SQM)



KEY PLAN



KEY SECTION



FLOOR PLAN

1. All dimensions are in metric, and measured from finish to finish excluding construction tolerances.
2. All materials, dimensions, and drawings are approximate only.
3. Information is subject to change without notice, at developer's absolute discretion.
4. Actual area may vary from the stated area.
5. Drawings not to scale.
6. All images used are for illustrative purposes only and do not represent the actual size, features, specifications, fittings, and furnishings.
7. The developer reserves the right to make revisions / alterations, at it's absolute discretion, without any liability whatsoever.



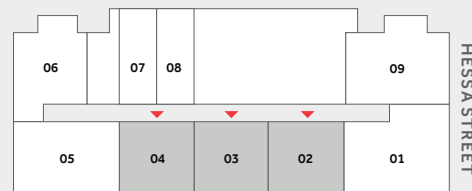
TOWER 1

ONE BEDROOM

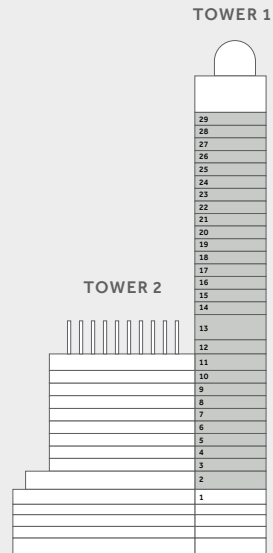
FLOOR 2 - 29

UNIT 2, 3 & 4

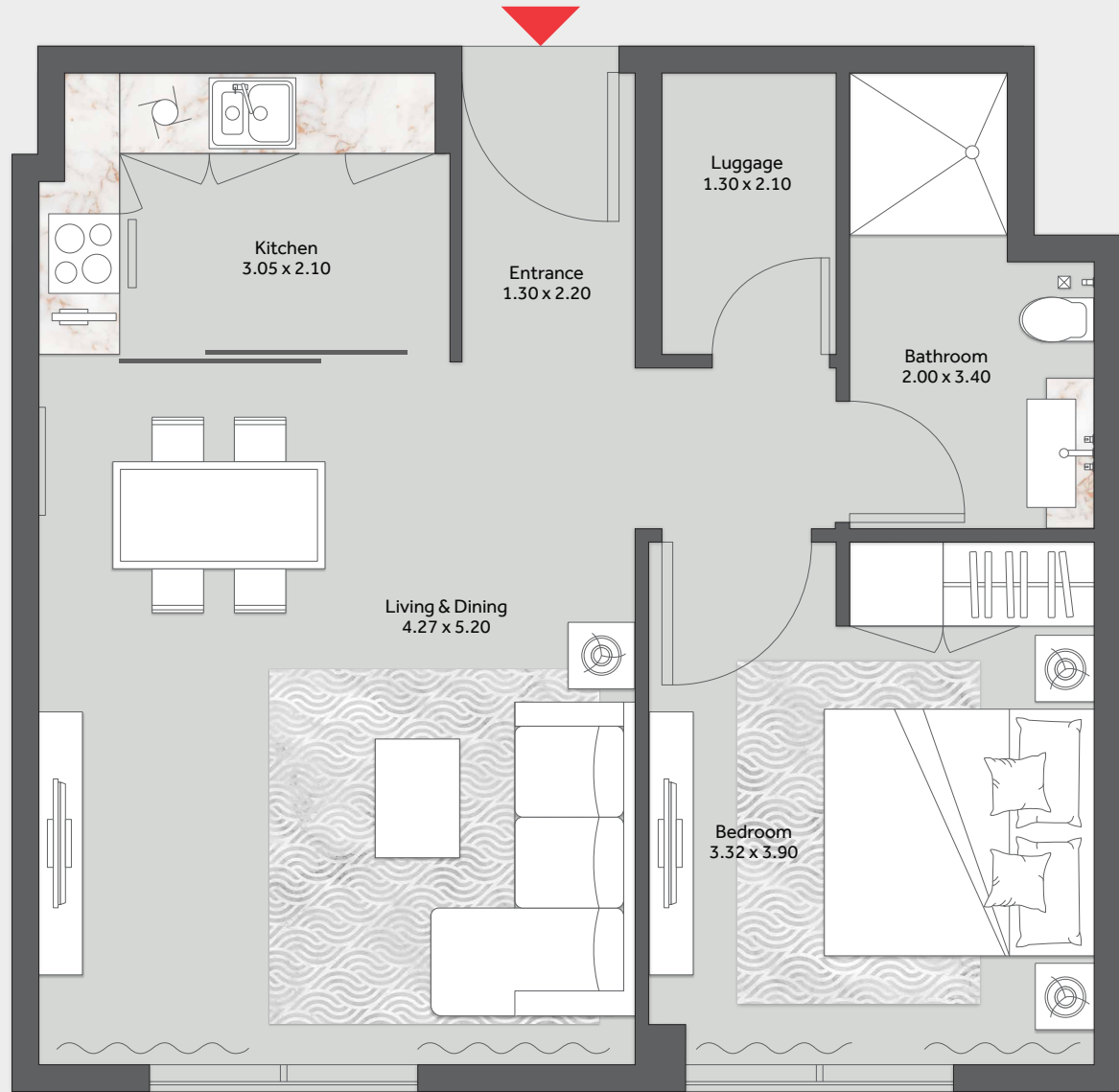
TOTAL AREA	UNIT 2	696.11 SQFT (64.67 SQM)
TOTAL AREA	UNIT 3	700.52 SQFT (65.08 SQM)
TOTAL AREA	UNIT 4	695.46 SQFT (64.61 SQM)



KEY PLAN



KEY SECTION



FLOOR PLAN

1. All dimensions are in metric, and measured from finish to finish excluding construction tolerances.
2. All materials, dimensions, and drawings are approximate only.
3. Information is subject to change without notice, at developer's absolute discretion.
4. Actual area may vary from the stated area.
5. Drawings not to scale.
6. All images used are for illustrative purposes only and do not represent the actual size, features, specifications, fittings, and furnishings.
7. The developer reserves the right to make revisions / alterations, at it's absolute discretion, without any liability whatsoever.



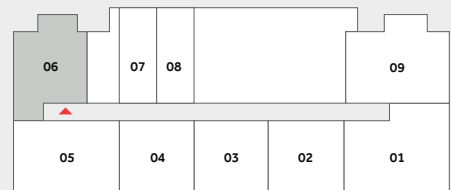
TOWER 1

ONE BEDROOM

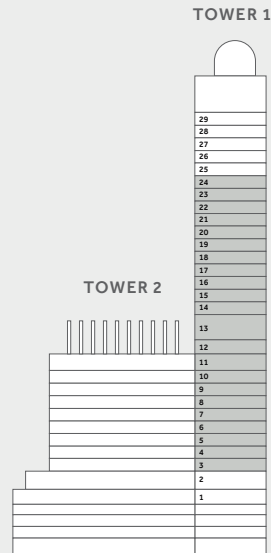
FLOOR 3 - 24

UNIT 6

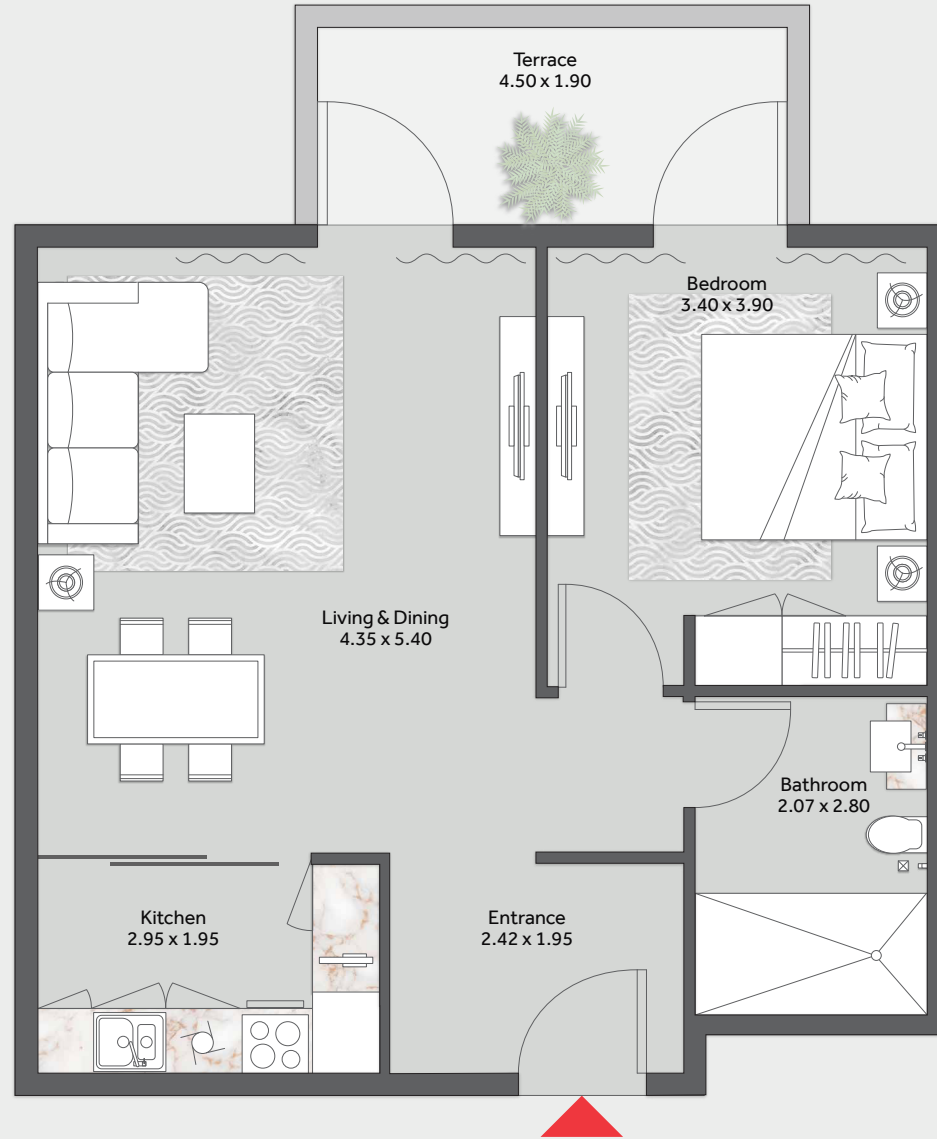
SUITE AREA	689.11 SQFT (64.02 SQM)
TERRACE	99.24 SQFT (9.22 SQM)
TOTAL AREA	788.36 SQFT (73.24 SQM)



KEY PLAN



KEY SECTION



FLOOR PLAN

1. All dimensions are in metric, and measured from finish to finish excluding construction tolerances.
2. All materials, dimensions, and drawings are approximate only.
3. Information is subject to change without notice, at developer's absolute discretion.
4. Actual area may vary from the stated area.
5. Drawings not to scale.
6. All images used are for illustrative purposes only and do not represent the actual size, features, specifications, fittings, and furnishings.
7. The developer reserves the right to make revisions / alterations, at it's absolute discretion, without any liability whatsoever.



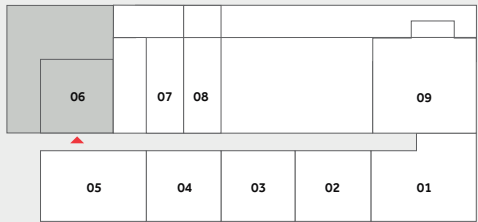
TOWER 1

ONE BEDROOM

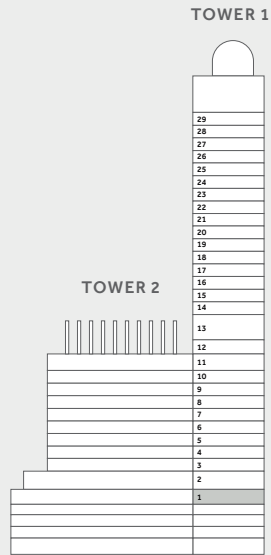
FLOOR 1

UNIT 6

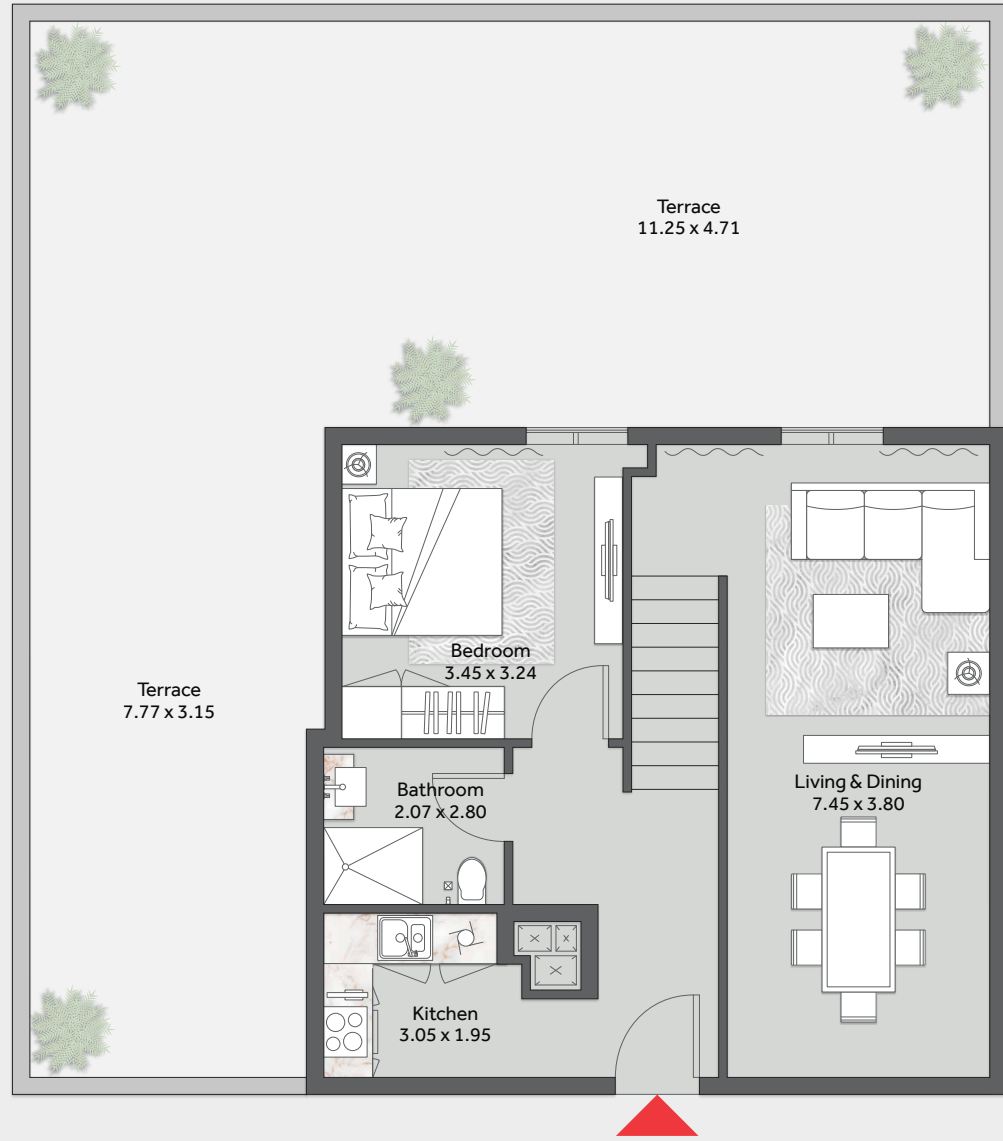
SUITE AREA	701.27 SQFT (65.15 SQM)
TERRACE	943.36 SQFT (87.64 SQM)
TOTAL AREA	1644.63 SQFT (152.79 SQM)



KEY PLAN



KEY SECTION



FLOOR PLAN

1. All dimensions are in metric, and measured from finish to finish excluding construction tolerances.
2. All materials, dimensions, and drawings are approximate only.
3. Information is subject to change without notice, at developer's absolute discretion.
4. Actual area may vary from the stated area.
5. Drawings not to scale.
6. All images used are for illustrative purposes only and do not represent the actual size, features, specifications, fittings, and furnishings.
7. The developer reserves the right to make revisions / alterations, at it's absolute discretion, without any liability whatsoever.



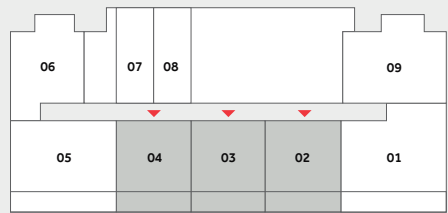
TOWER 1

ONE BEDROOM

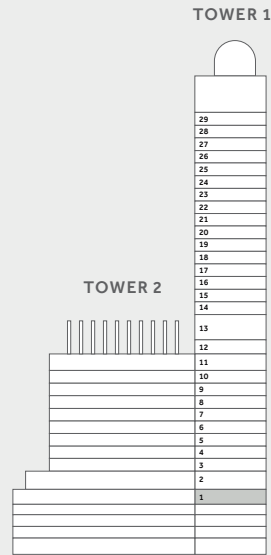
FLOOR 1

UNIT 2, 3 & 4

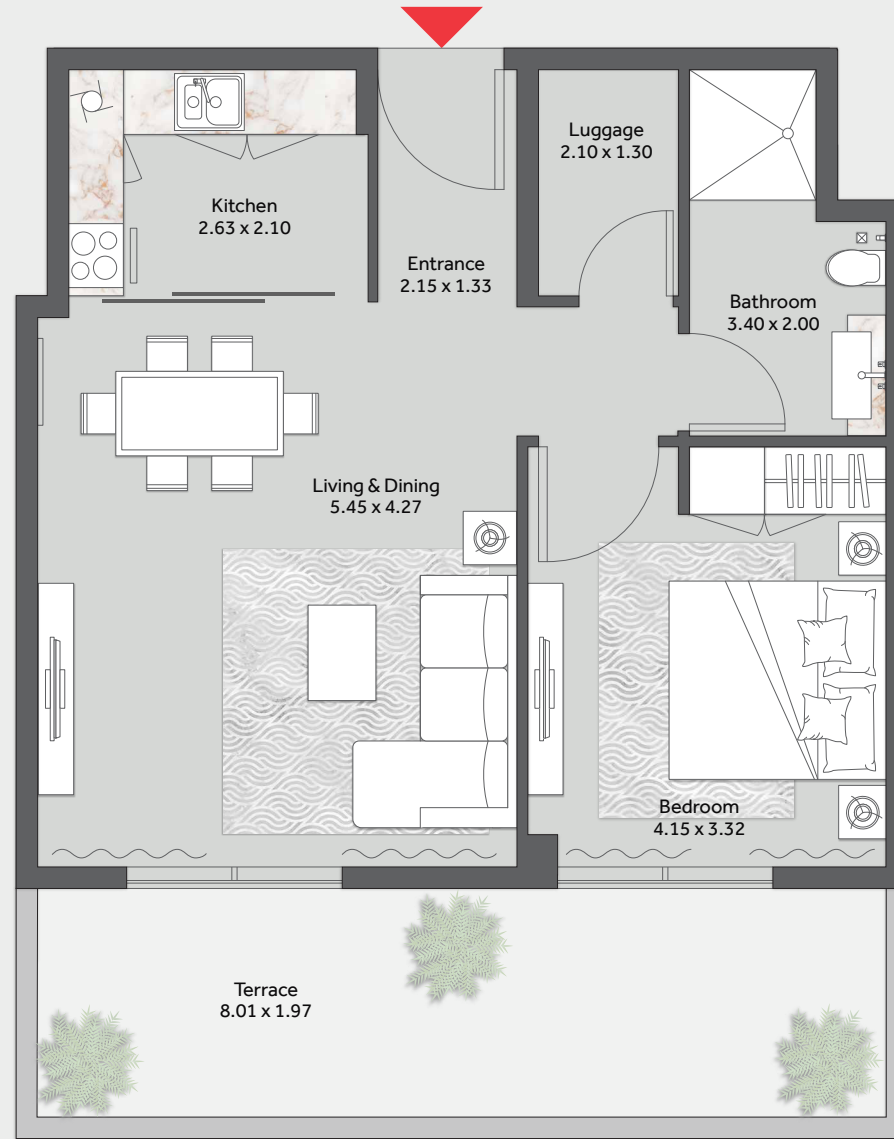
	UNIT 2	UNIT 3	UNIT 4
SUITE AREA	697.51 SQFT (64.80 SQM)	697.51 SQFT (64.80 SQM)	697.51 SQFT (64.80 SQM)
TERRACE	206.56 SQFT (19.19 SQM)	206.56 SQFT (19.19 SQM)	206.56 SQFT (19.19 SQM)
TOTAL AREA	904.07 SQFT (83.99 SQM)	904.07 SQFT (83.99 SQM)	904.07 SQFT (83.99 SQM)



KEY PLAN



KEY SECTION



FLOOR PLAN

- All dimensions are in metric, and measured from finish to finish excluding construction tolerances.
- All materials, dimensions, and drawings are approximate only.
- Information is subject to change without notice, at developer's absolute discretion.
- Actual area may vary from the stated area.
- Drawings not to scale.
- All images used are for illustrative purposes only and do not represent the actual size, features, specifications, fittings, and furnishings.
- The developer reserves the right to make revisions / alterations, at it's absolute discretion, without any liability whatsoever.



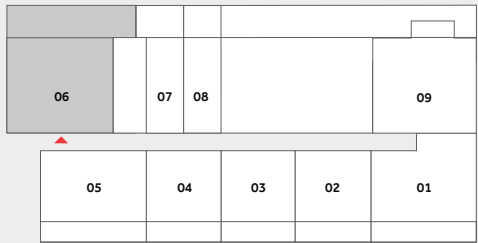
TOWER 1

ONE BEDROOM

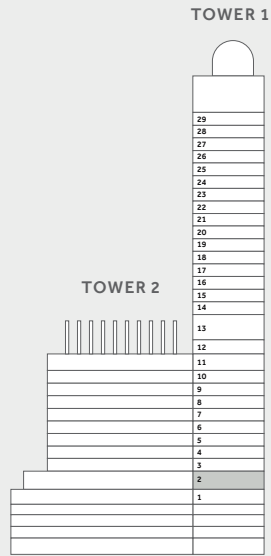
FLOOR 2

UNIT 6

SUITE AREA	689.11 SQFT (64.02 SQM)
TERRACE	350.15 SQFT (32.53 SQM)
TOTAL AREA	1039.26 SQFT (96.55 SQM)



KEY PLAN



KEY SECTION



FLOOR PLAN

1. All dimensions are in metric, and measured from finish to finish excluding construction tolerances.
2. All materials, dimensions, and drawings are approximate only.
3. Information is subject to change without notice, at developer's absolute discretion.
4. Actual area may vary from the stated area.
5. Drawings not to scale.
6. All images used are for illustrative purposes only and do not represent the actual size, features, specifications, fittings, and furnishings.
7. The developer reserves the right to make revisions / alterations, at it's absolute discretion, without any liability whatsoever.



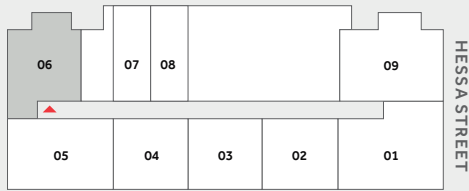
TOWER 1

ONE BEDROOM

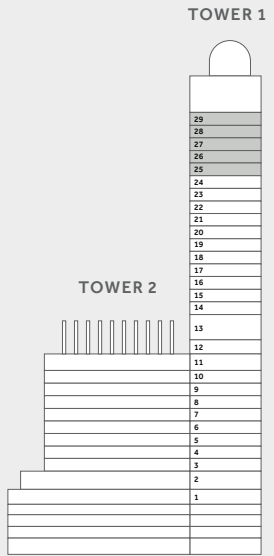
FLOOR 25 - 29

UNIT 6

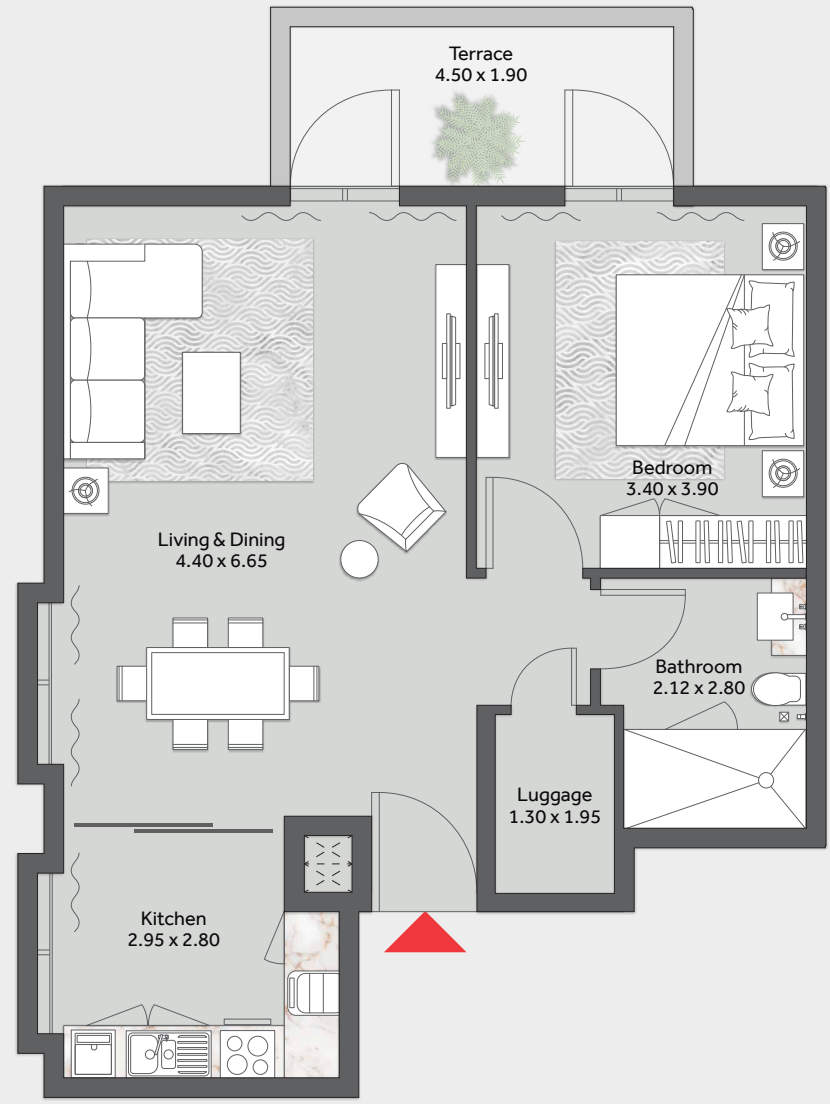
SUITE AREA	777.59 SQFT (72.24 SQM)
TERRACE	99.24 SQFT (9.22 SQM)
TOTAL AREA	876.84 SQFT (81.46 SQM)



KEY PLAN



KEY SECTION



FLOOR PLAN

1. All dimensions are in metric, and measured from finish to finish excluding construction tolerances. 2. All materials, dimensions, and drawings are approximate only. 3. Information is subject to change without notice, at developer's absolute discretion. 4. Actual area may vary from the stated area. 5. Drawings not to scale. 6. All images used are for illustrative purposes only and do not represent the actual size, features, specifications, fittings, and furnishings. 7. The developer reserves the right to make revisions / alterations, at it's absolute discretion, without any liability whatsoever.

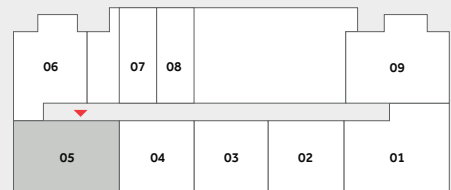
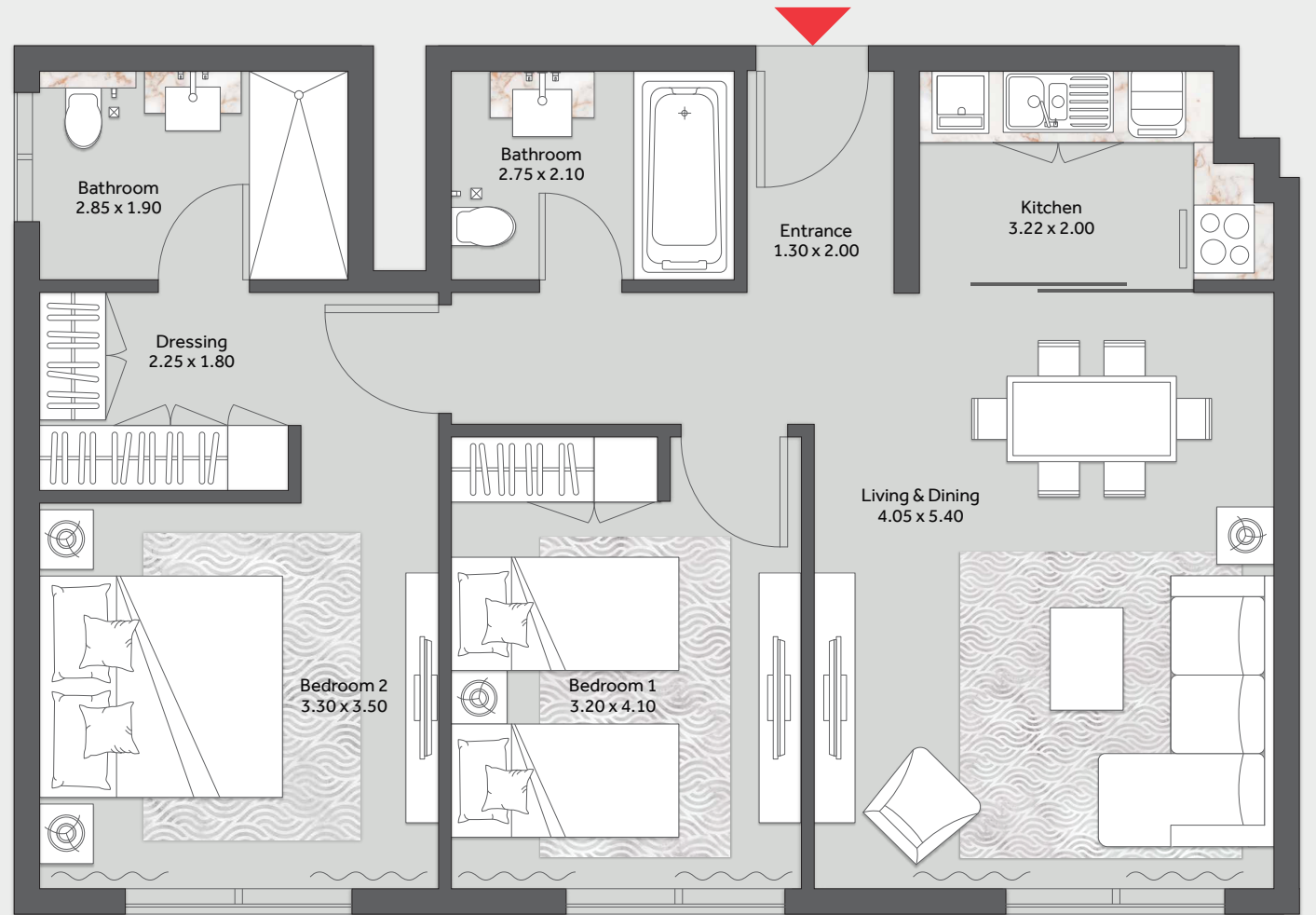


TOWER 1
TWO BEDROOM

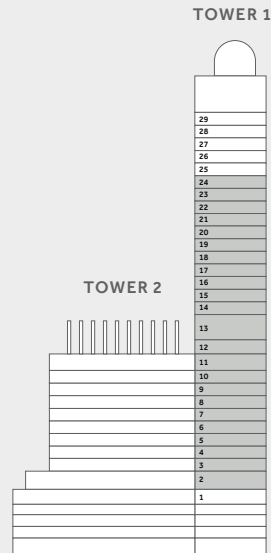
FLOOR 2 - 24

UNIT 5

TOTAL AREA 965.10 SQFT (89.66 SQM)



KEY PLAN



KEY SECTION

FLOOR PLAN

1. All dimensions are in metric, and measured from finish to finish excluding construction tolerances.
2. All materials, dimensions, and drawings are approximate only.
3. Information is subject to change without notice, at developer's absolute discretion.
4. Actual area may vary from the stated area.
5. Drawings not to scale.
6. All images used are for illustrative purposes only and do not represent the actual size, features, specifications, fittings, and furnishings.
7. The developer reserves the right to make revisions / alterations, at it's absolute discretion, without any liability whatsoever.

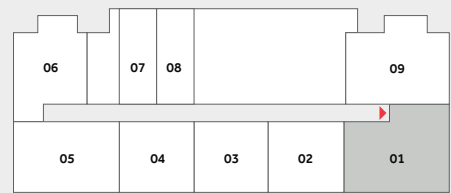


TOWER 1
TWO BEDROOM

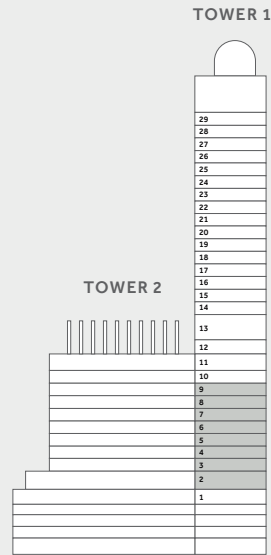
FLOOR 2 - 9

UNIT 1

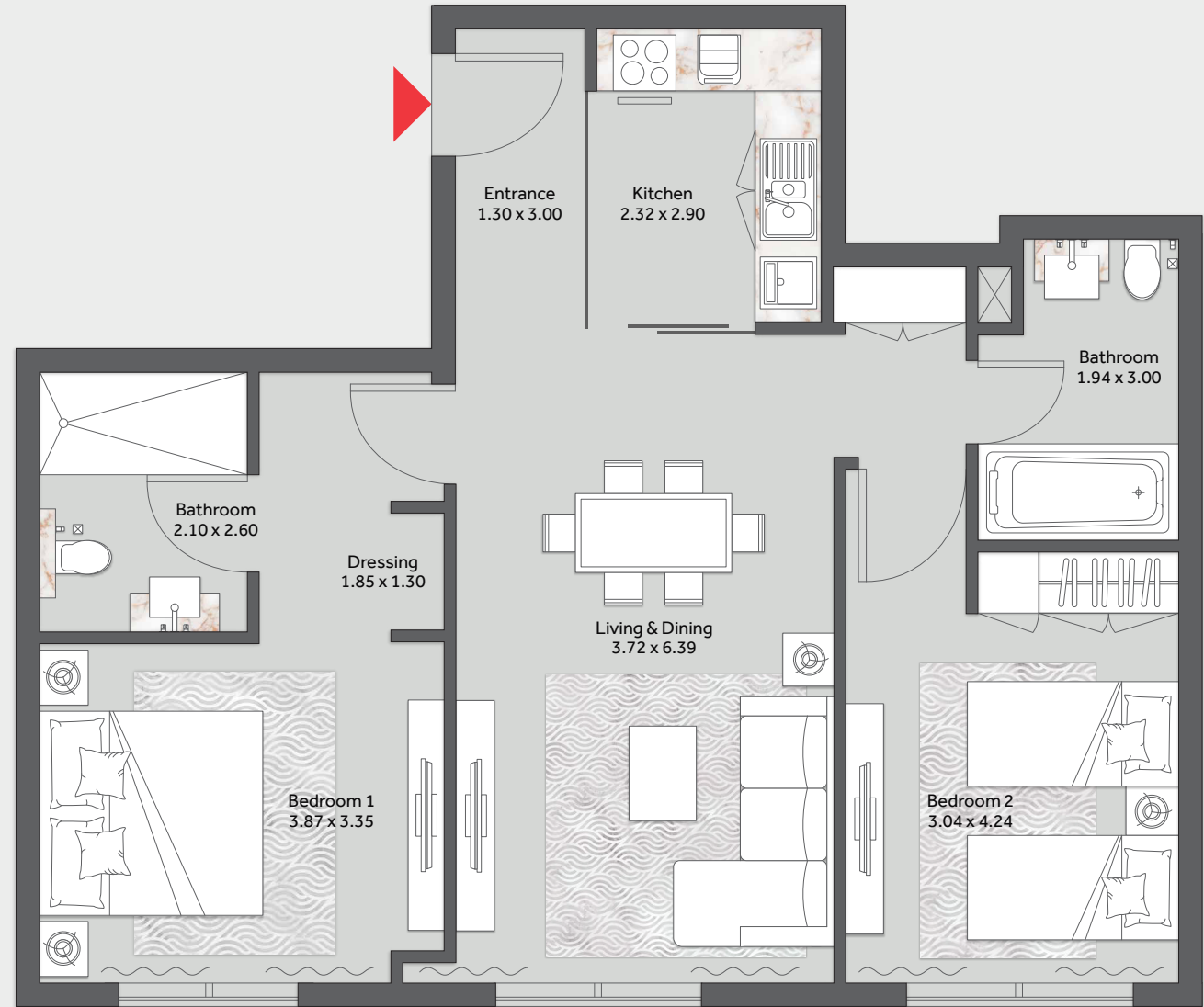
TOTAL AREA 995.89 SQFT (92.52 SQM)



KEY PLAN



KEY SECTION



FLOOR PLAN

1. All dimensions are in metric, and measured from finish to finish excluding construction tolerances.
2. All materials, dimensions, and drawings are approximate only.
3. Information is subject to change without notice, at developer's absolute discretion.
4. Actual area may vary from the stated area.
5. Drawings not to scale.
6. All images used are for illustrative purposes only and do not represent the actual size, features, specifications, fittings, and furnishings.
7. The developer reserves the right to make revisions / alterations, at it's absolute discretion, without any liability whatsoever.



TOWER 1

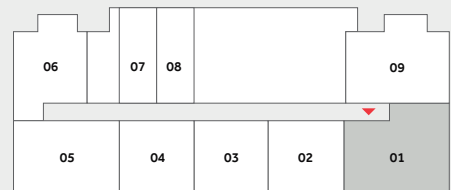
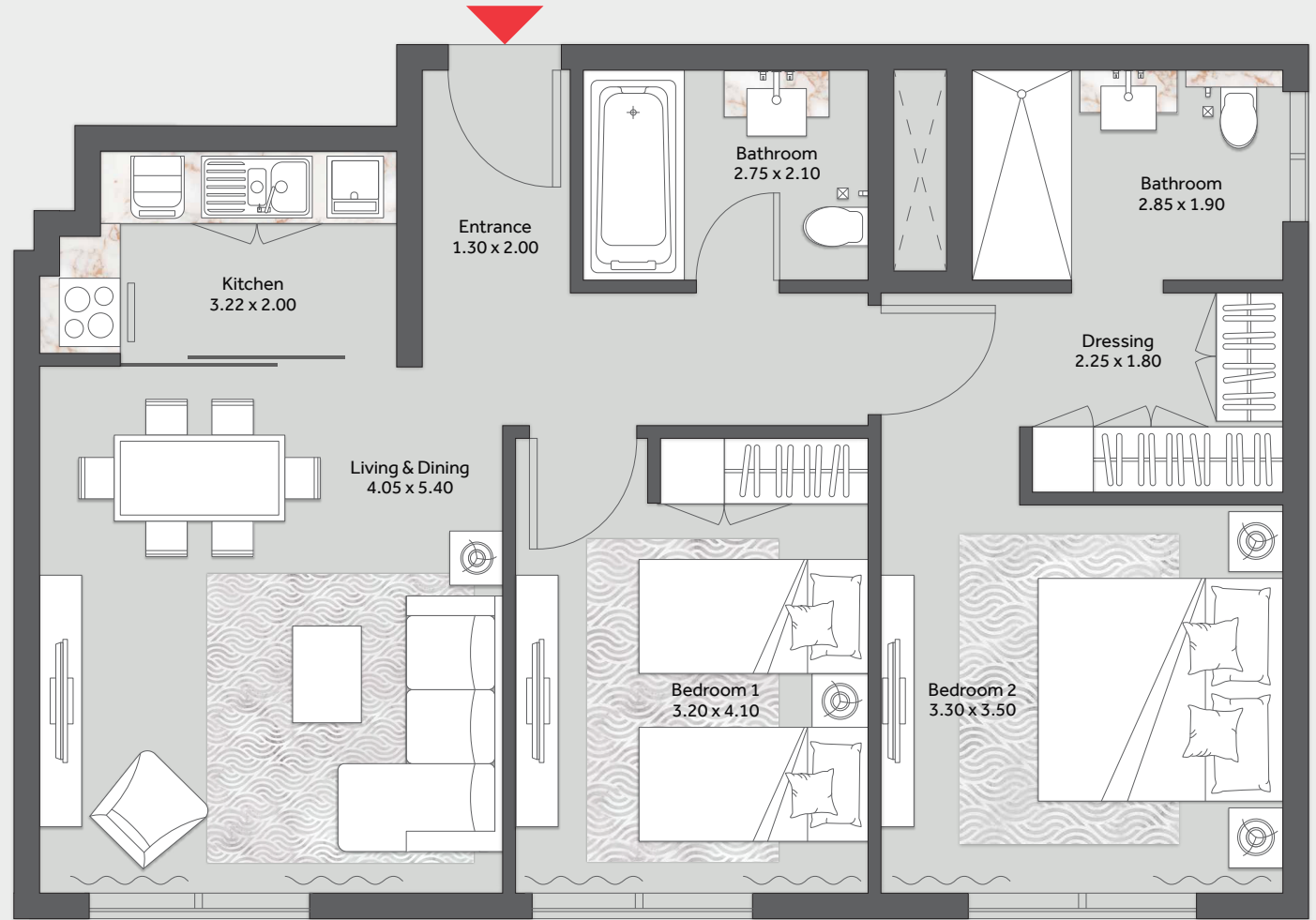
TWO BEDROOM

FLOOR 12 - 24

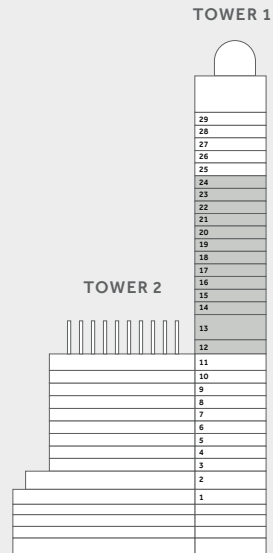
UNIT 1

TOTAL AREA

932.38 SQFT (86.62 SQM)



KEY PLAN



KEY SECTION

FLOOR PLAN

1. All dimensions are in metric, and measured from finish to finish excluding construction tolerances.
2. All materials, dimensions, and drawings are approximate only.
3. Information is subject to change without notice, at developer's absolute discretion.
4. Actual area may vary from the stated area.
5. Drawings not to scale.
6. All images used are for illustrative purposes only and do not represent the actual size, features, specifications, fittings, and furnishings.
7. The developer reserves the right to make revisions / alterations, at it's absolute discretion, without any liability whatsoever.

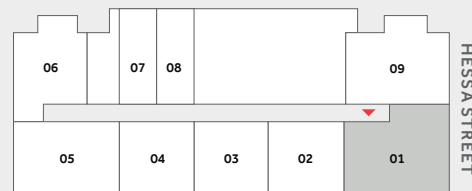


TOWER 1
TWO BEDROOM

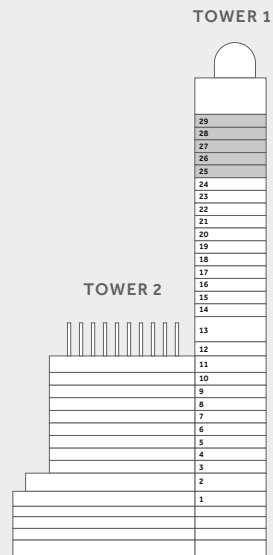
FLOOR 25 - 29

UNIT 1

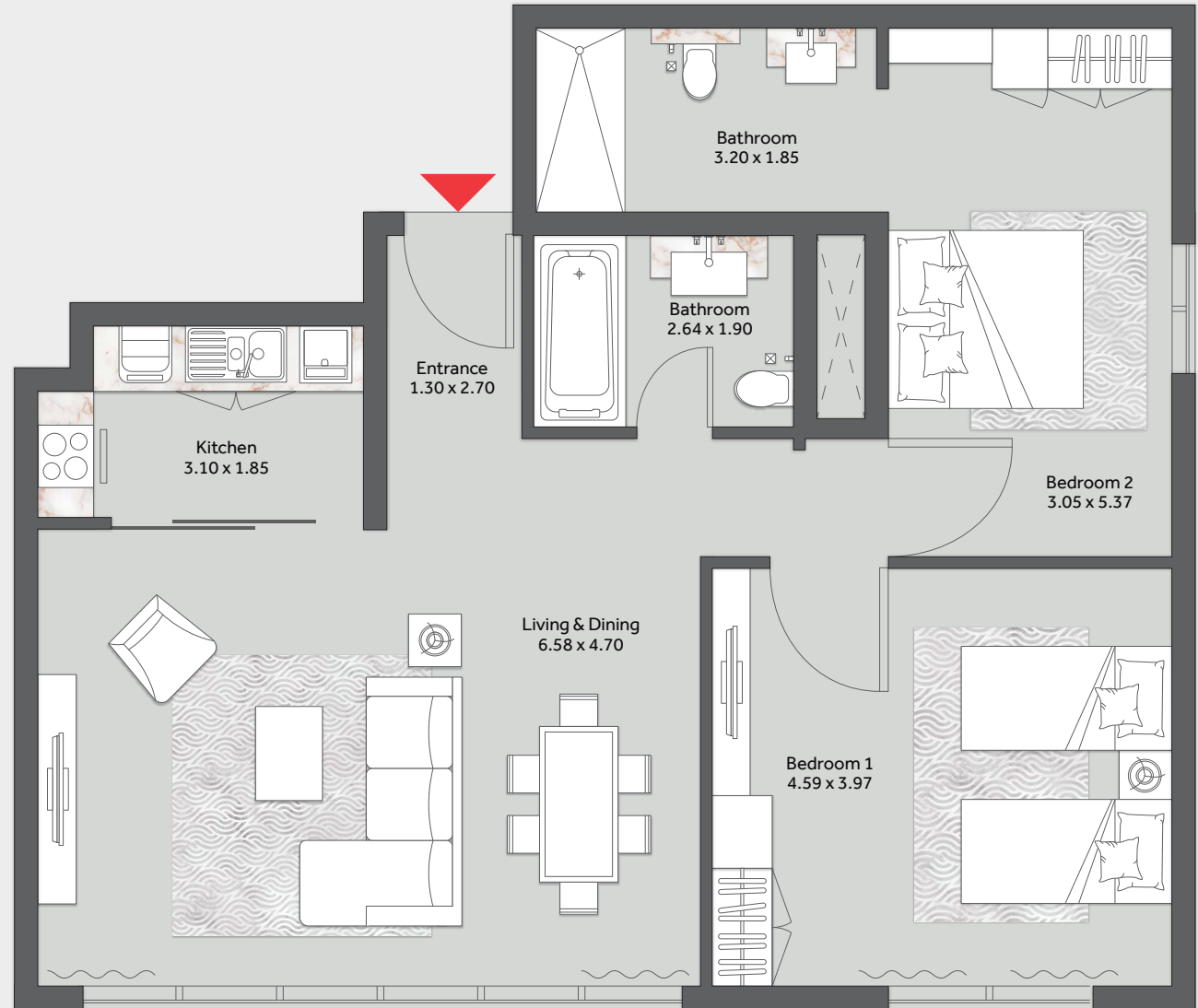
TOTAL AREA 1110.09 SQFT (103.13 SQM)



KEY PLAN



KEY SECTION



FLOOR PLAN

1. All dimensions are in metric, and measured from finish to finish excluding construction tolerances.
2. All materials, dimensions, and drawings are approximate only.
3. Information is subject to change without notice, at developer's absolute discretion.
4. Actual area may vary from the stated area.
5. Drawings not to scale.
6. All images used are for illustrative purposes only and do not represent the actual size, features, specifications, fittings, and furnishings.
7. The developer reserves the right to make revisions / alterations, at its absolute discretion, without any liability whatsoever.



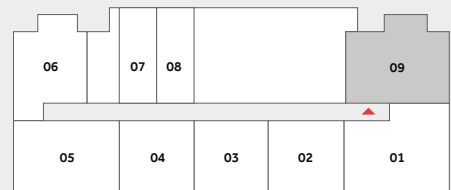
TOWER 1

TWO BEDROOM

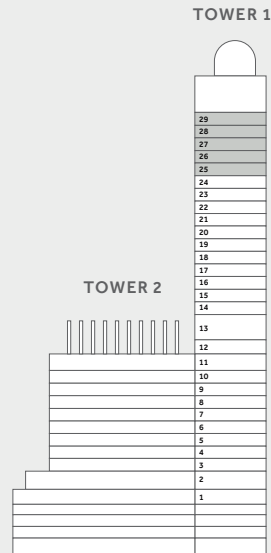
FLOOR 25 - 29

UNIT 9

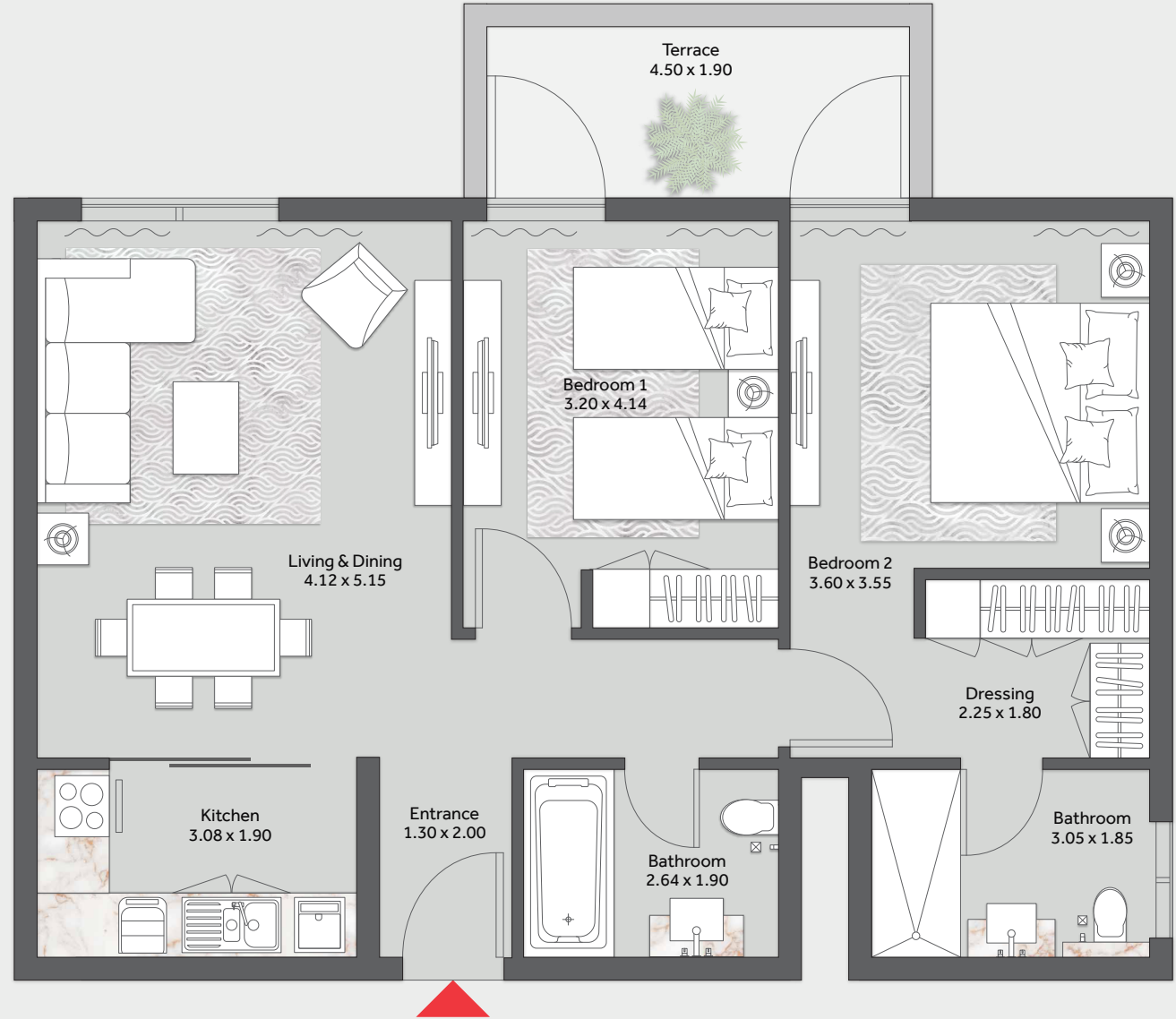
SUITE AREA	971.45 SQFT (90.25 SQM)
TERRACE	97.95 SQFT (9.10 SQM)
TOTAL AREA	1069.40 SQFT (99.35 SQM)



KEY PLAN



KEY SECTION



FLOOR PLAN

1. All dimensions are in metric, and measured from finish to finish excluding construction tolerances.
2. All materials, dimensions, and drawings are approximate only.
3. Information is subject to change without notice, at developer's absolute discretion.
4. Actual area may vary from the stated area.
5. Drawings not to scale.
6. All images used are for illustrative purposes only and do not represent the actual size, features, specifications, fittings, and furnishings.
7. The developer reserves the right to make revisions / alterations, at its absolute discretion, without any liability whatsoever.



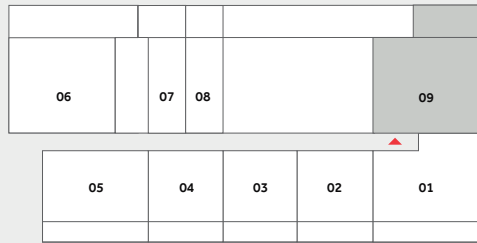
TOWER 1

TWO BEDROOM

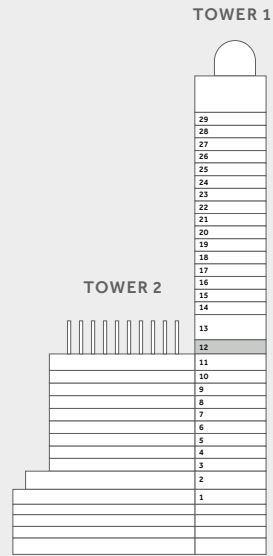
FLOOR 12

UNIT 9

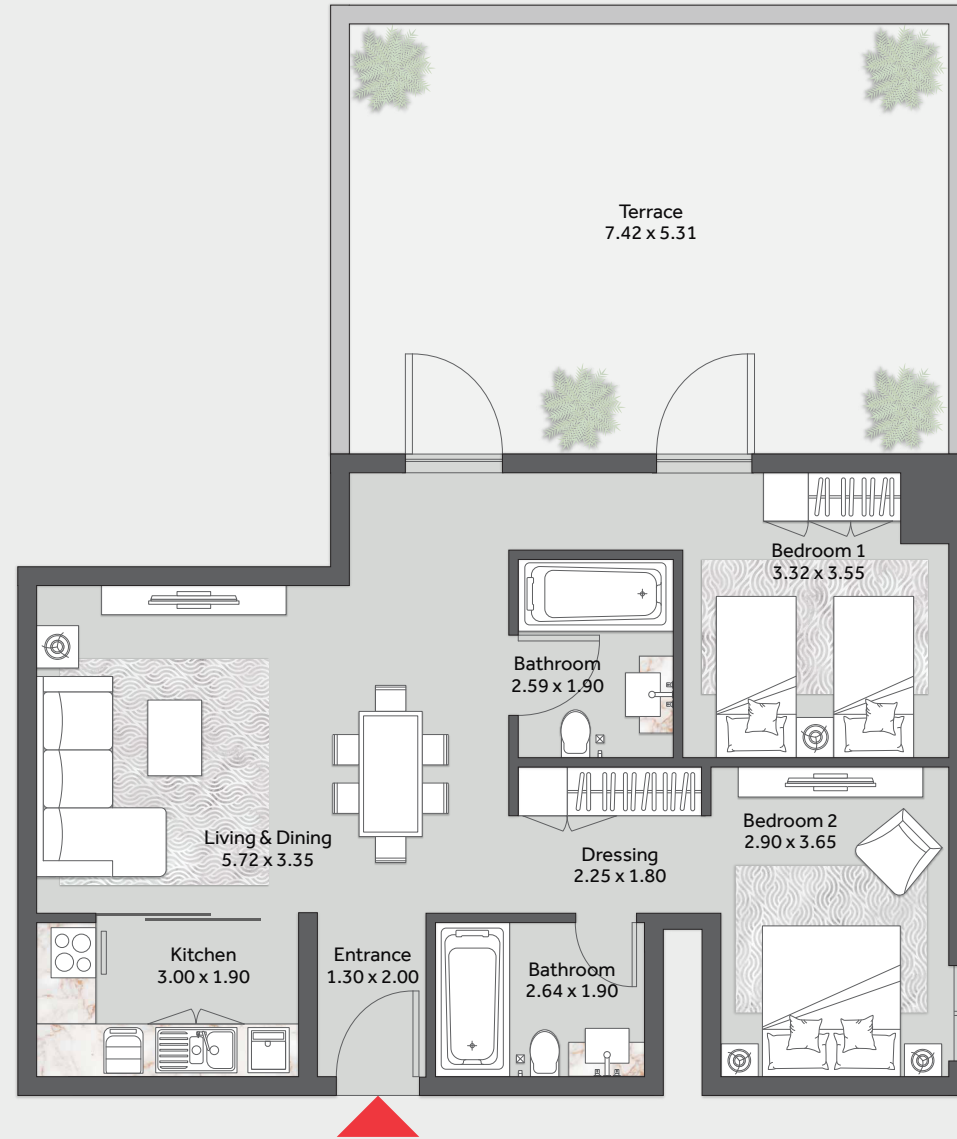
SUITE AREA	878.99 SQFT (81.66 SQM)
TERRACE	474.91 SQFT (44.12 SQM)
TOTAL AREA	1353.90 SQFT (125.78 SQM)



KEY PLAN



KEY SECTION



FLOOR PLAN

1. All dimensions are in metric, and measured from finish to finish excluding construction tolerances.
2. All materials, dimensions, and drawings are approximate only.
3. Information is subject to change without notice, at developer's absolute discretion.
4. Actual area may vary from the stated area.
5. Drawings not to scale.
6. All images used are for illustrative purposes only and do not represent the actual size, features, specifications, fittings, and furnishings.
7. The developer reserves the right to make revisions / alterations, at it's absolute discretion, without any liability whatsoever.



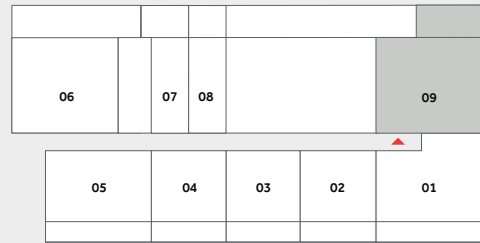
TOWER 1

TWO BEDROOM

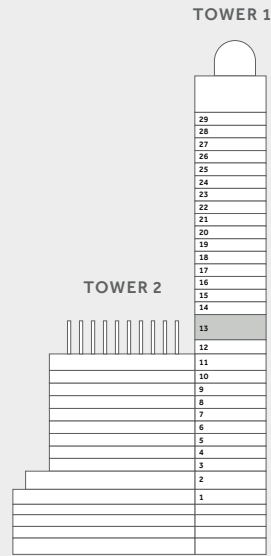
FLOOR 13

UNIT 9

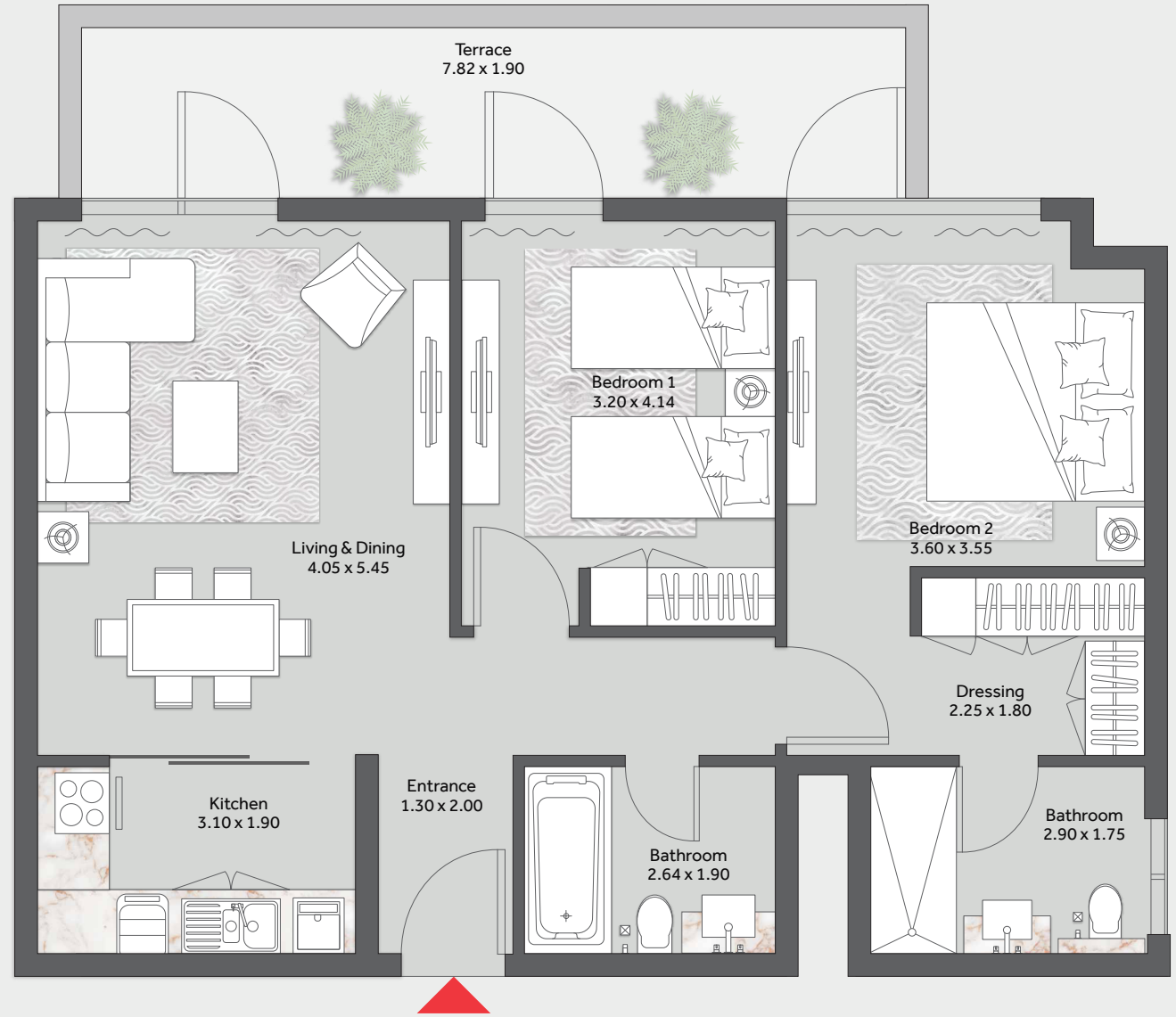
SUITE AREA	956.17 SQFT (88.83 SQM)
TERRACE	181.59 SQFT (16.87 SQM)
TOTAL AREA	1137.75 SQFT (105.70 SQM)



KEY PLAN



KEY SECTION



FLOOR PLAN

1. All dimensions are in metric, and measured from finish to finish excluding construction tolerances.
2. All materials, dimensions, and drawings are approximate only.
3. Information is subject to change without notice, at developer's absolute discretion.
4. Actual area may vary from the stated area.
5. Drawings not to scale.
6. All images used are for illustrative purposes only and do not represent the actual size, features, specifications, fittings, and furnishings.
7. The developer reserves the right to make revisions / alterations, at it's absolute discretion, without any liability whatsoever.



TOWER 1 TWO BEDROOM

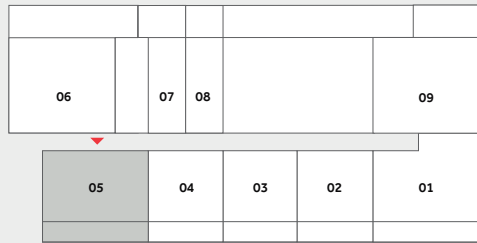
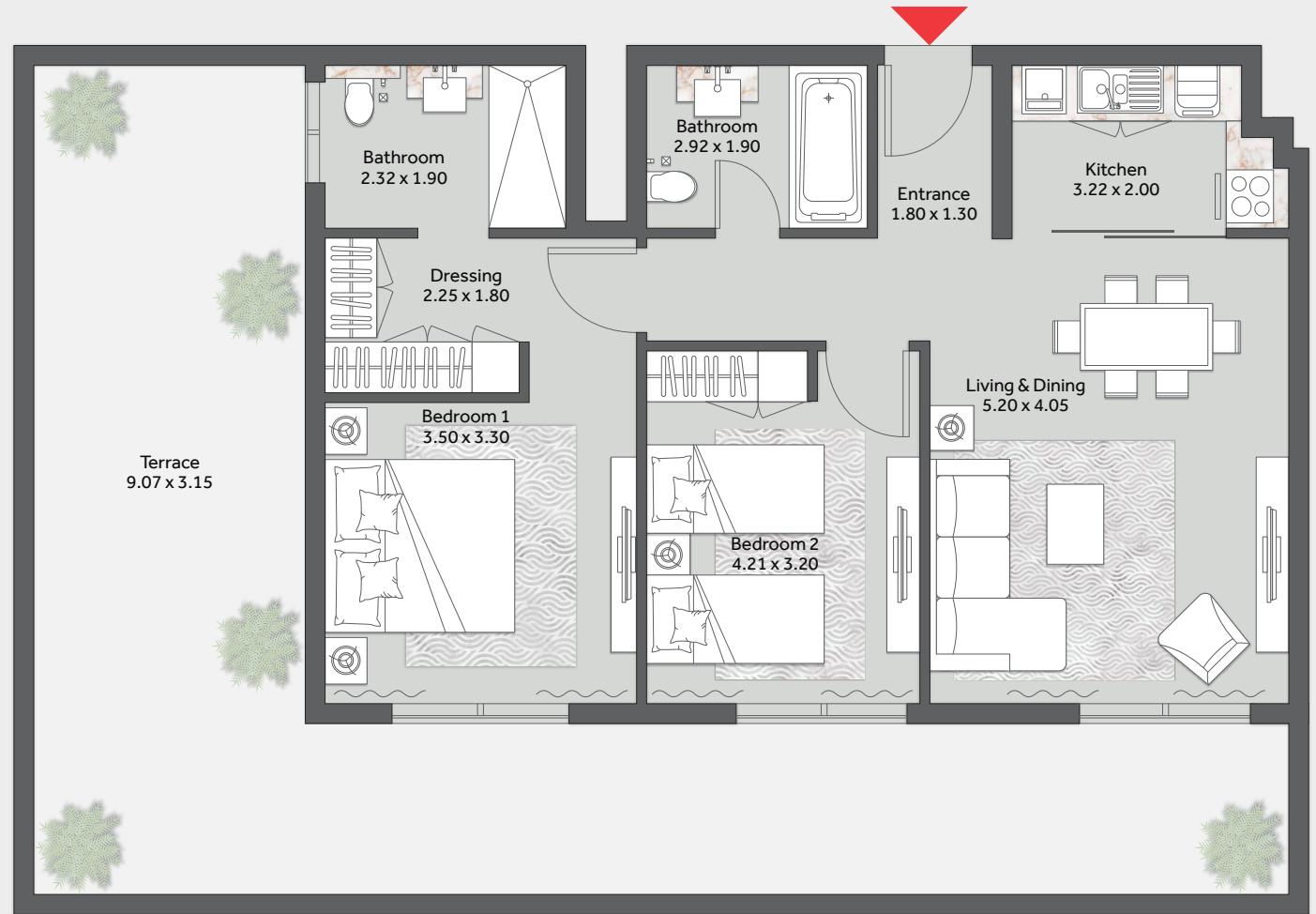
FLOOR 1

UNIT 5

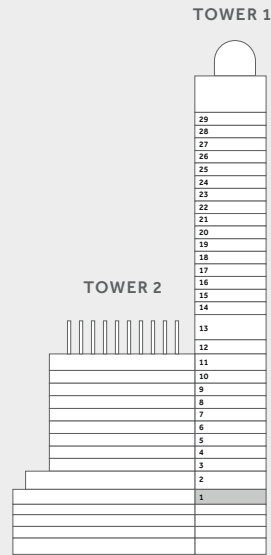
SUITE AREA 953.04 SQFT (88.54 SQM)

TERRACE 667.05 SQFT (61.97 SQM)

TOTAL AREA 1620.09 SQFT (150.51 SQM)



KEY PLAN



KEY SECTION

FLOOR PLAN

1. All dimensions are in metric, and measured from finish to finish excluding construction tolerances.
2. All materials, dimensions, and drawings are approximate only.
3. Information is subject to change without notice, at developer's absolute discretion.
4. Actual area may vary from the stated area.
5. Drawings not to scale.
6. All images used are for illustrative purposes only and do not represent the actual size, features, specifications, fittings, and furnishings.
7. The developer reserves the right to make revisions / alterations, at its absolute discretion, without any liability whatsoever.

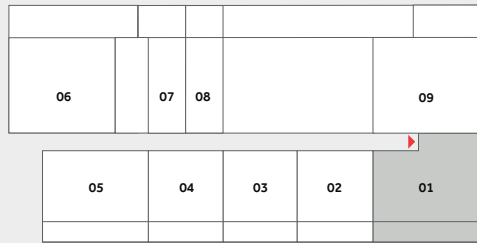


TOWER 1 TWO BEDROOM

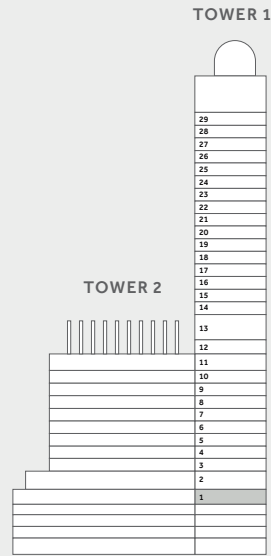
FLOOR 1

UNIT 1

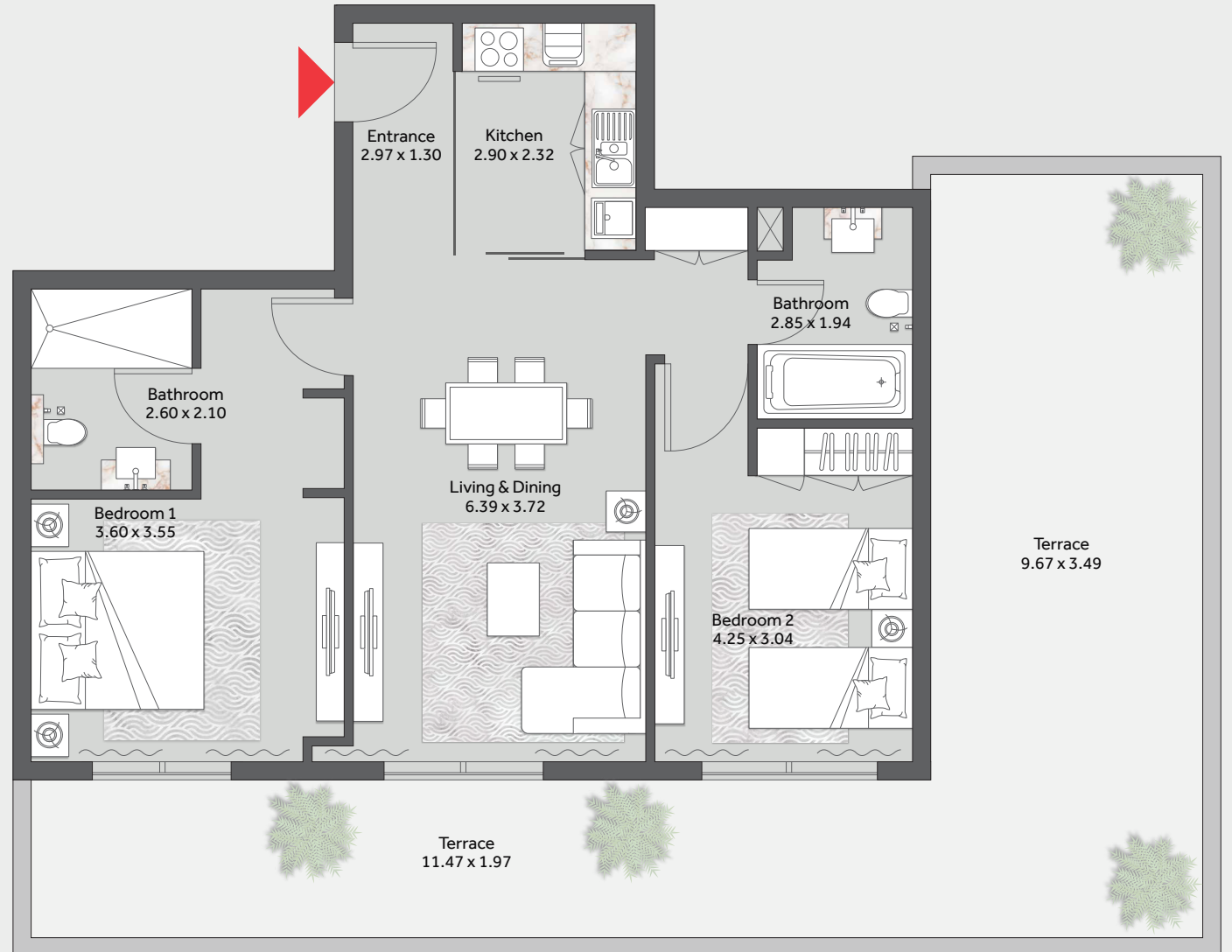
SUITE AREA	987.17 SQFT (91.71 SQM)
TERRACE	704.61 SQFT (65.46 SQM)
TOTAL AREA	1691.78 SQFT (157.17 SQM)



KEY PLAN



KEY SECTION



FLOOR PLAN

1. All dimensions are in metric, and measured from finish to finish excluding construction tolerances.
2. All materials, dimensions, and drawings are approximate only.
3. Information is subject to change without notice, at developer's absolute discretion.
4. Actual area may vary from the stated area.
5. Drawings not to scale.
6. All images used are for illustrative purposes only and do not represent the actual size, features, specifications, fittings, and furnishings.
7. The developer reserves the right to make revisions / alterations, at its absolute discretion, without any liability whatsoever.

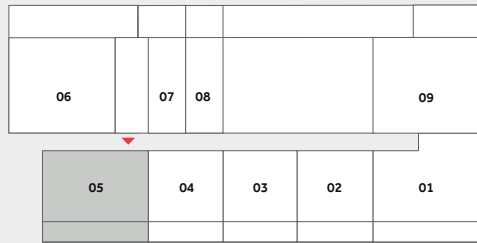
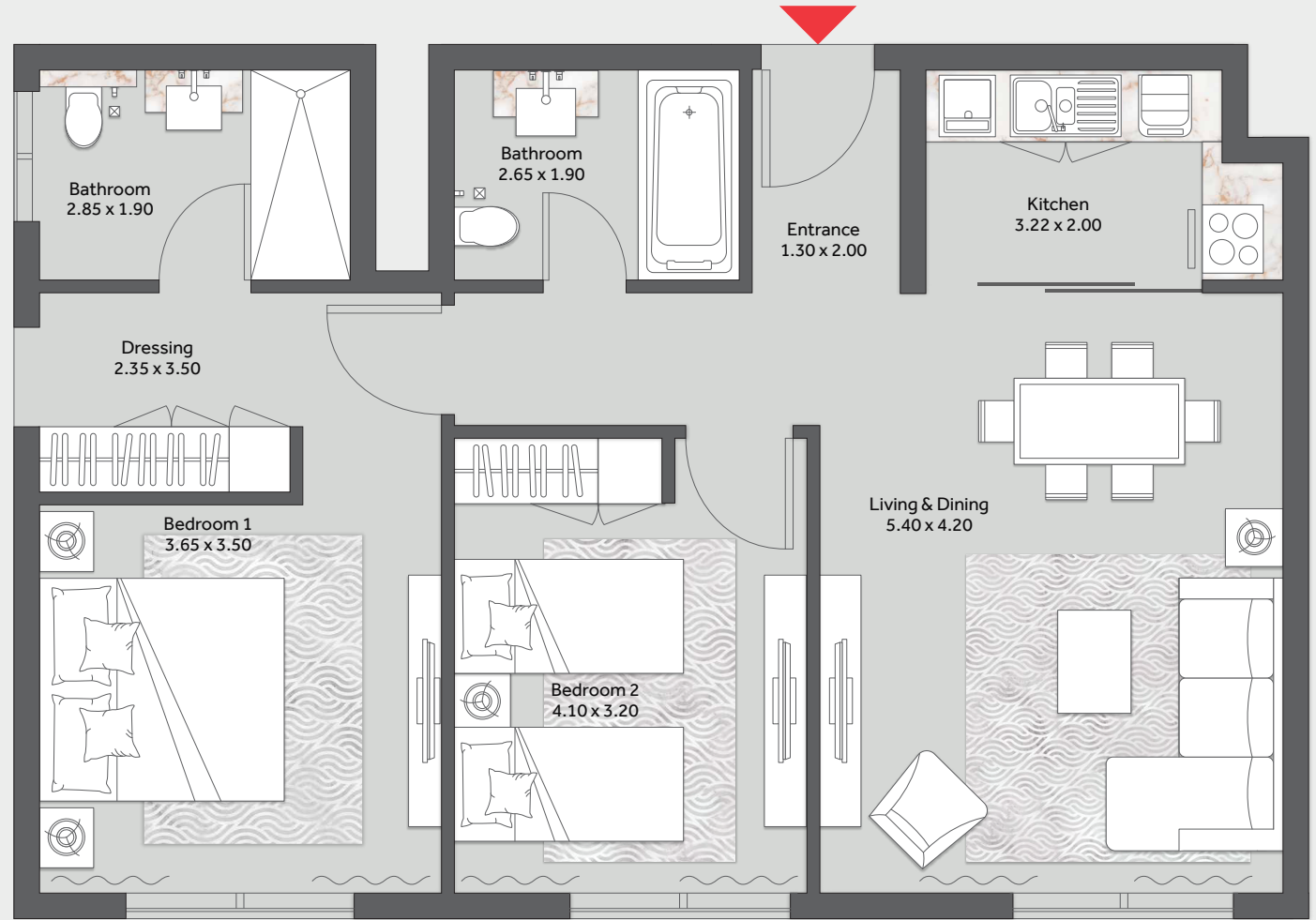


TOWER 1
TWO BEDROOM

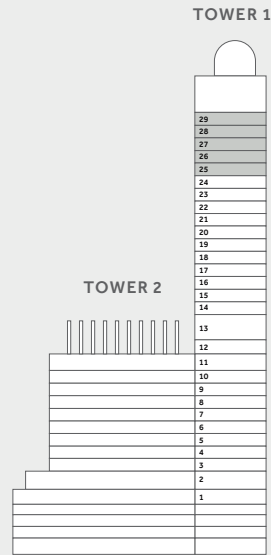
FLOOR 25 - 29

UNIT 5

TOTAL AREA 974.79 SQFT (90.56 SQM)



KEY PLAN



KEY SECTION

FLOOR PLAN

1. All dimensions are in metric, and measured from finish to finish excluding construction tolerances.
2. All materials, dimensions, and drawings are approximate only.
3. Information is subject to change without notice, at developer's absolute discretion.
4. Actual area may vary from the stated area.
5. Drawings not to scale.
6. All images used are for illustrative purposes only and do not represent the actual size, features, specifications, fittings, and furnishings.
7. The developer reserves the right to make revisions / alterations, at it's absolute discretion, without any liability whatsoever.

THE DEVELOPER

A BEACON OF EXCELLENCE

Khamas Group of Investments CO's pays attention to small detail and are governed by strong principles inspired by His Highness, Sheikh Mohammed Bin Rashid Al Maktoum's attention given to the citizens of Dubai.

Founded by Abdul Karim Khamas over a century ago, the Khamas Group has grown with the tide of the progress in the United Arab Emirates. Best known within the construction industry it has become a globally recognised company through its diversified ventures in hospitality, FMCG, manufacturing, franchise and the education sectors.

Khamas has developed 9 hotels, 14 restaurants and 2 spas all of the highest quality and positioned all over the world.

Succeeded by Abdul Karim's son, Yousuf Khamas, the Khamas team now exceeds 1000 employees and with planned expansion that number is set to grow. The Khamas group has long been the beacon of excellence within the hospitality industry. The hotel division has gone from strength to strength with a cornerstone of motivated and well trained staff that provide personalised and warm service.





CAN YOU IMAGINE?

The Residences offers you the hotel luxury you love, now in the comfort of a private home.



Marriott Residences JVC, Dubai are not owned, developed or sold by Marriott International, Inc. or its affiliates ("Marriott"). Khamas Group of Investment Companies LLC ("KGIC") and Kappaacca Real Estate Development ("KRED") uses Marriott marks under a license from Marriott, which has not confirmed the accuracy of any of the statements or representations made herein.