

EMBER

AT PARKFIVE

FLOOR PLANS





STUDIO





TYPE

01 STUDIO

| | |
|------------|------------|
| INTERIOR | TOTAL |
| 350 SQ.FT. | 433 SQ.FT. |

| | |
|-----------|--------|
| EXTERIOR | FLOORS |
| 82 SQ.FT. | 1-11 |

LAKE VIEW

COMMUNITY PARK

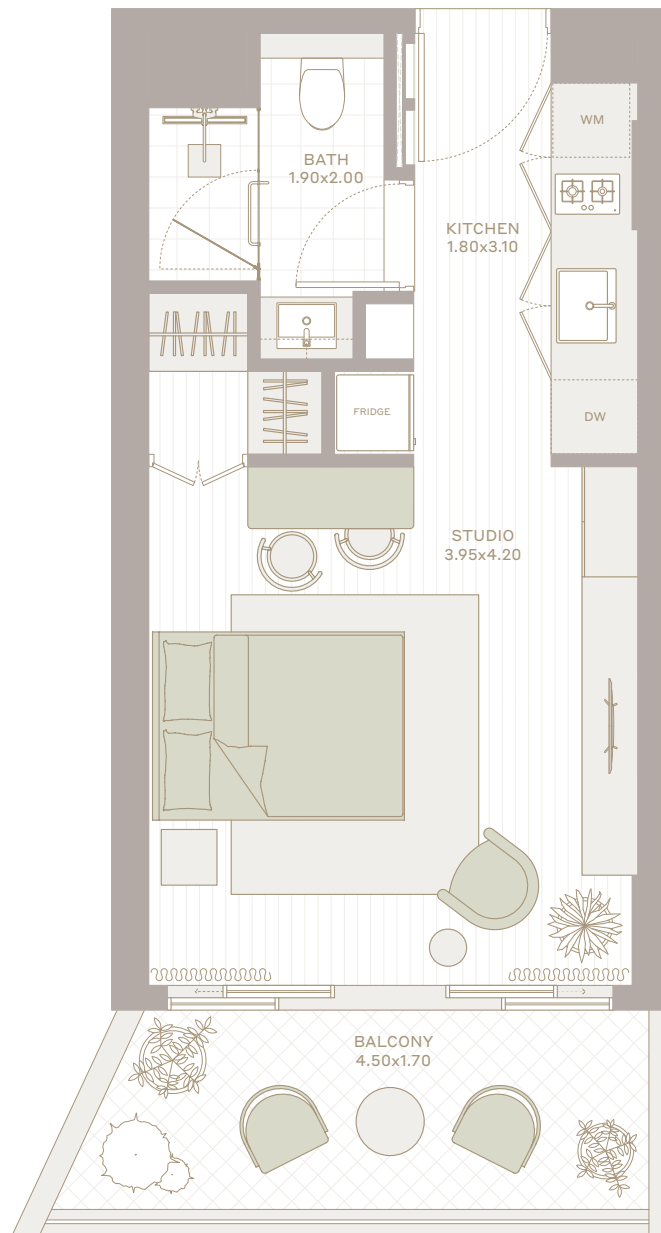
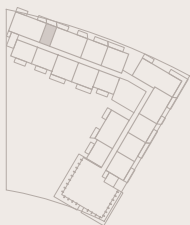
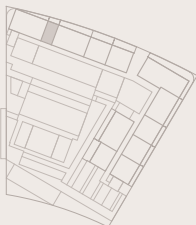
COMMUNITY PARK

LEVEL 1

CENTRAL PARK

LEVEL 2-10

LEVEL 11



All the dimensions are in square feet. The Unit shown is typical, and actual Unit may vary in dimensions, areas, layout, material specification, orientation, and location. Some of the Units may have a mirrored layout of the above plan. Unit Windows, Façade, Balcony door location, Fixtures, Kitchen Cabinets, Sanitary ware, and Wardrobes, including each of their location as shown in the plan is indicative and subject to revision by the Seller. All fixtures, fittings, goods, accessories, and furniture reflected/displayed in this plan(s) are strictly illustrative and representational (not actual) in nature and are only for the purpose of illustrating /reflecting one of the possible layouts which the Purchaser could arrange after the Unit is handed over and do not form part of the Unit. No furniture, goods, accessories are included in the sale, unless such items are specifically included in Schedule A of the SPA.



1BEDROOM





TYPE

1A

1 BHK

| | |
|------------|------------|
| INTERIOR | TOTAL |
| 599 SQ.FT. | 687 SQ.FT. |

| | |
|-----------|--------|
| EXTERIOR | FLOORS |
| 88 SQ.FT. | 2-11 |

LAKE VIEW



COMMUNITY PARK

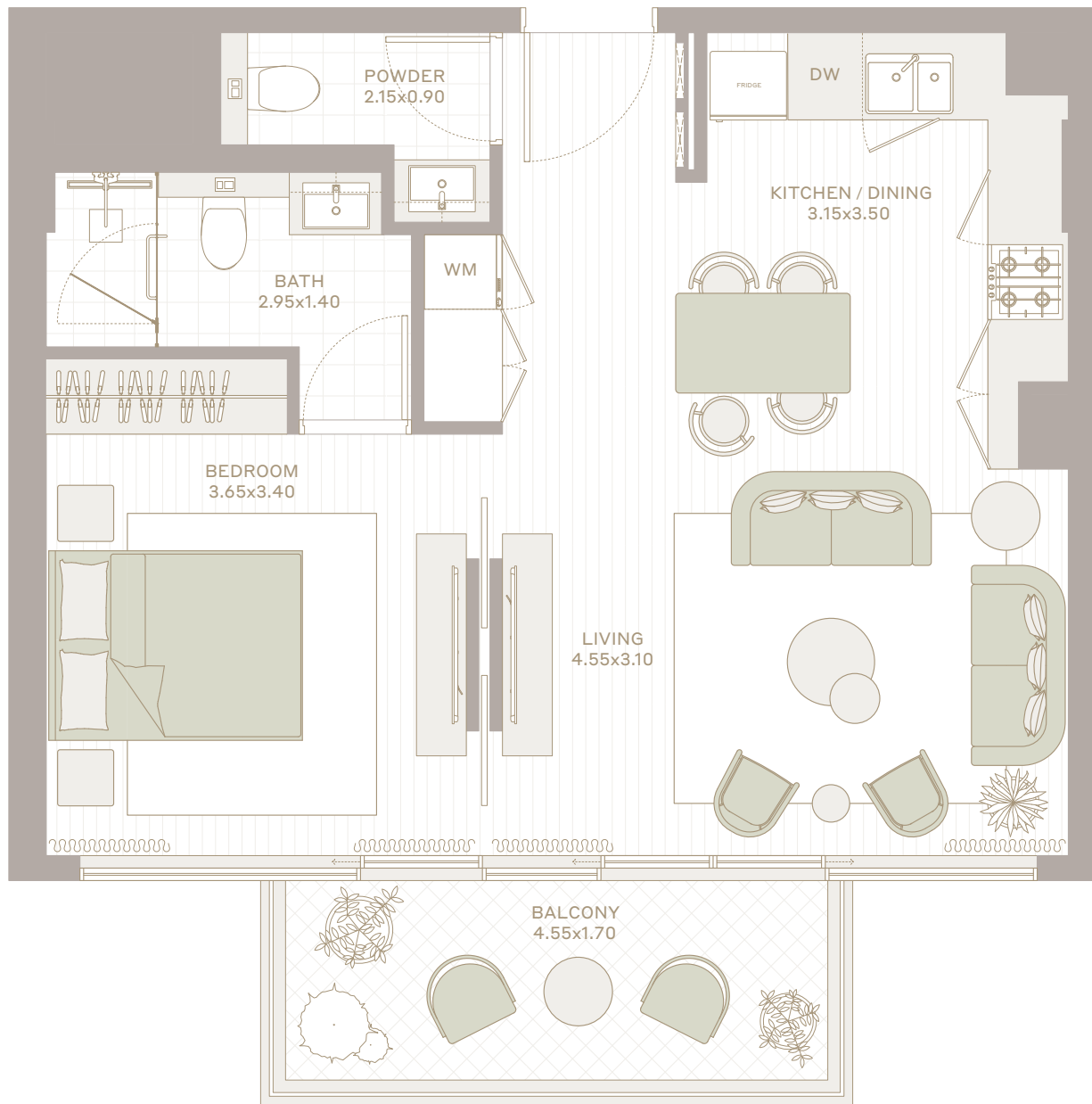
COMMUNITY PARK

LEVEL 2-10

CENTRAL PARK



LEVEL 11



All the dimensions are in square feet. The Unit shown is typical, and actual Unit may vary in dimensions, areas, layout, material specification, orientation, and location. Some of the Units may have a mirrored layout of the above plan. Unit Windows, Façade, Balcony door location, Fixtures, Kitchen Cabinets, Sanitary ware, and Wardrobes, including each of their location as shown in the plan is indicative and subject to revision by the Seller. All fixtures, fittings, goods, accessories, and furniture reflected/displayed in this plan(s) are strictly illustrative and representational (not actual) in nature and are only for the purpose of illustrating /reflecting one of the possible layouts which the Purchaser could arrange after the Unit is handed over and do not form part of the Unit. No furniture, goods, accessories are included in the sale, unless such items are specifically included in Schedule A of the SPA.

EMBER

PARKFIVE



TYPE

2A

1 BHK



| | |
|------------|------------|
| INTERIOR | TOTAL |
| 700 SQ.FT. | 817 SQ.FT. |

| | |
|------------|--------|
| EXTERIOR | FLOORS |
| 118 SQ.FT. | 1-11 |

LAKE VIEW

COMMUNITY PARK

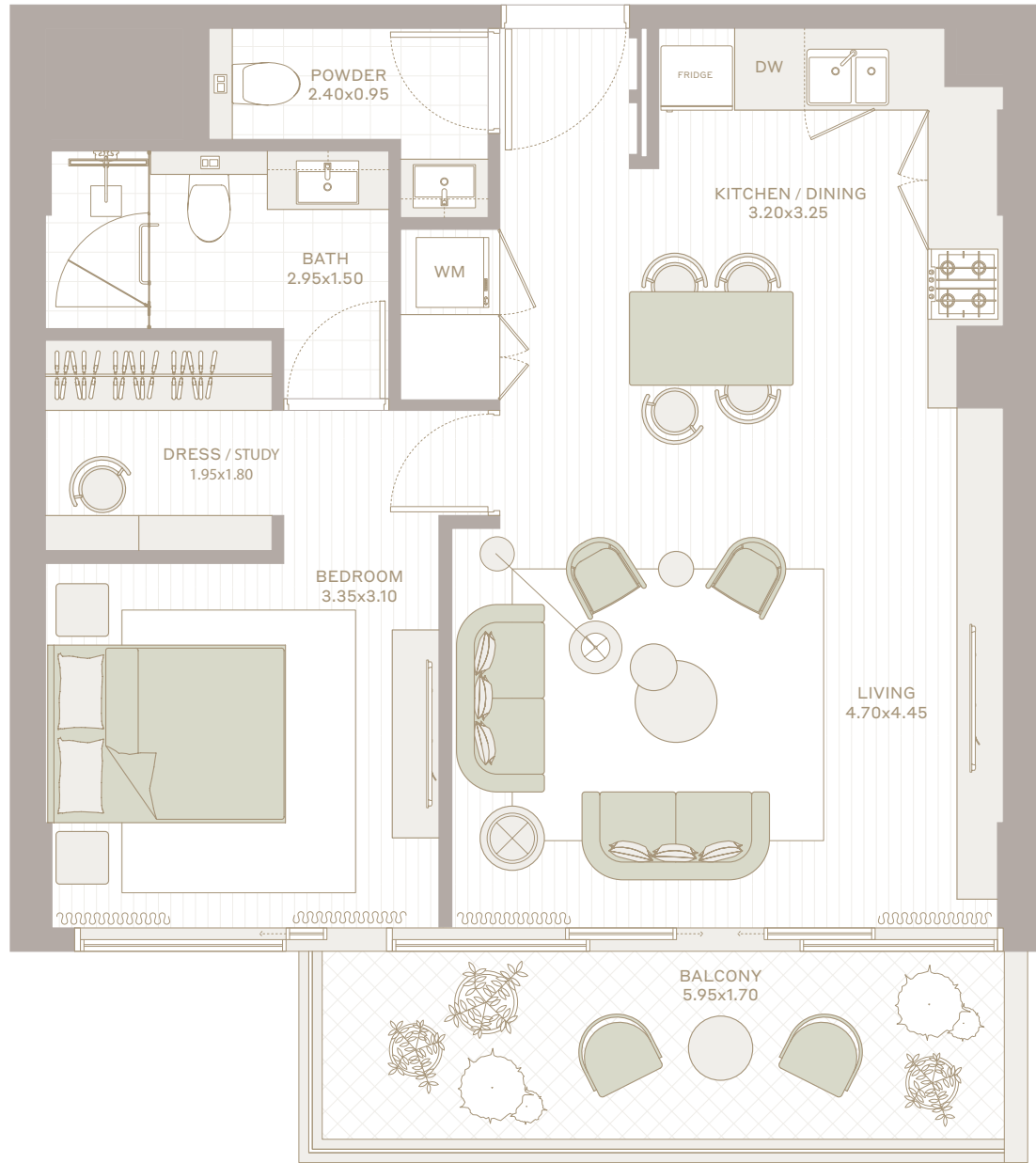
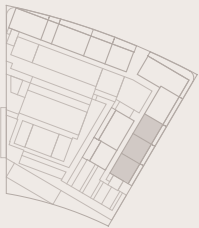
COMMUNITY PARK

LEVEL 1

CENTRAL PARK

LEVEL 2-10

LEVEL 11



All the dimensions are in square feet. The Unit shown is typical, and actual Unit may vary in dimensions, areas, layout, material specification, orientation, and location. Some of the Units may have a mirrored layout of the above plan. Unit Windows, Façade, Balcony door location, Fixtures, Kitchen Cabinets, Sanitary ware, and Wardrobes, including each of their location as shown in the plan is indicative and subject to revision by the Seller. All fixtures, fittings, goods, accessories, and furniture reflected/displayed in this plan(s) are strictly illustrative and representational (not actual) in nature and are only for the purpose of illustrating /reflecting one of the possible layouts which the Purchaser could arrange after the Unit is handed over and do not form part of the Unit. No furniture, goods, accessories are included in the sale, unless such items are specifically included in Schedule A of the SPA.

EMBER
PARKFIVE

2BEDROOM





TYPE

1B

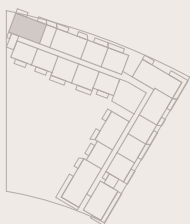
2 BHK



| | |
|--------------|--------------|
| INTERIOR | TOTAL |
| 1,061 SQ.FT. | 1,214 SQ.FT. |

| | |
|------------|--------|
| EXTERIOR | FLOORS |
| 153 SQ.FT. | 2-11 |

LAKE VIEW



COMMUNITY PARK

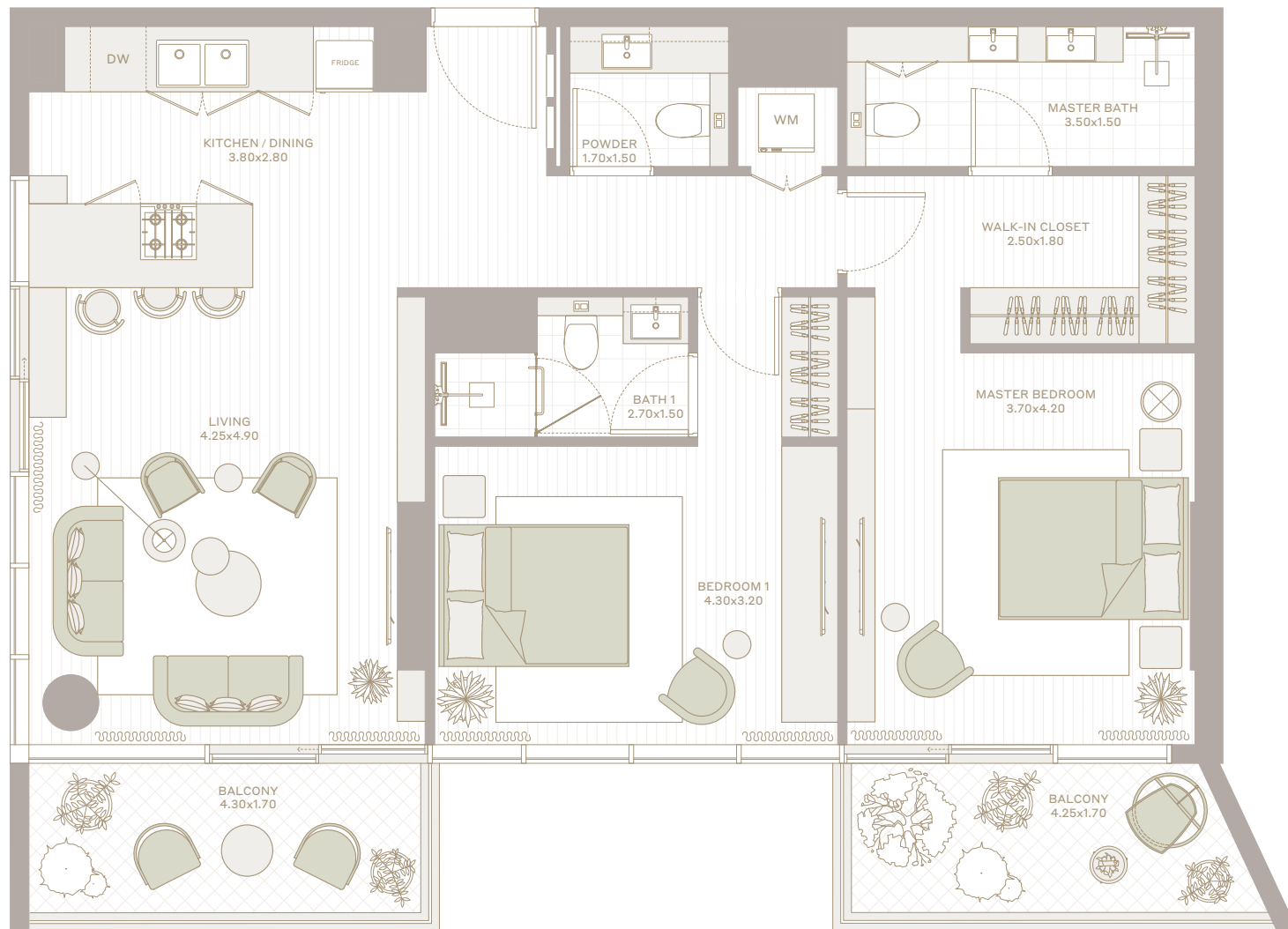
COMMUNITY PARK

LEVEL 2-10

CENTRAL PARK



LEVEL 11



All the dimensions are in square feet. The Unit shown is typical, and actual Unit may vary in dimensions, areas, layout, material specification, orientation, and location. Some of the Units may have a mirrored layout of the above plan. Unit Windows, Façade, Balcony door location, Fixtures, Kitchen Cabinets, Sanitary ware, and Wardrobes, including each of their location as shown in the plan is indicative and subject to revision by the Seller. All fixtures, fittings, goods, accessories, and furniture reflected/displayed in this plan(s) are strictly illustrative and representational (not actual) in nature and are only for the purpose of illustrating /reflecting one of the possible layouts which the Purchaser could arrange after the Unit is handed over and do not form part of the Unit. No furniture, goods, accessories are included in the sale, unless such items are specifically included in Schedule A of the SPA.

EMBER

PARKFIVE



TYPE

1C

2 BHK



| | |
|--------------|--------------|
| INTERIOR | TOTAL |
| 1,060 SQ.FT. | 1,228 SQ.FT. |

| | |
|------------|--------|
| EXTERIOR | FLOORS |
| 168 SQ.FT. | 2-11 |

LAKE VIEW

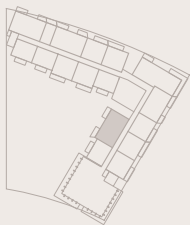


COMMUNITY PARK

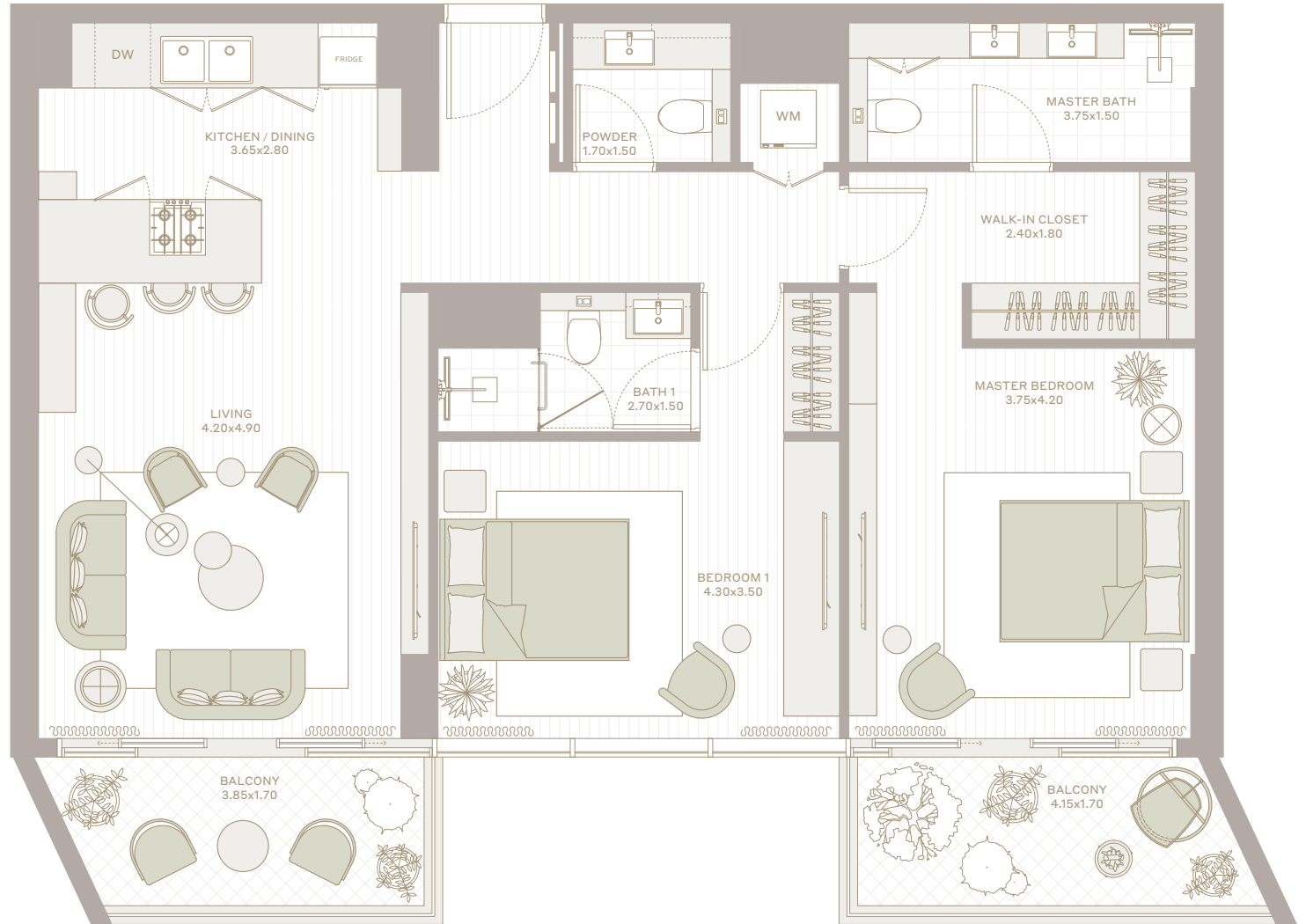
COMMUNITY PARK

LEVEL 2-10

CENTRAL PARK



LEVEL 11



All the dimensions are in square feet. The Unit shown is typical, and actual Unit may vary in dimensions, areas, layout, material specification, orientation, and location. Some of the Units may have a mirrored layout of the above plan. Unit Windows, Façade, Balcony door location, Fixtures, Kitchen Cabinets, Sanitary ware, and Wardrobes, including each of their location as shown in the plan is indicative and subject to revision by the Seller. All fixtures, fittings, goods, accessories, and furniture reflected/displayed in this plan(s) are strictly illustrative and representational (not actual) in nature and are only for the purpose of illustrating /reflecting one of the possible layouts which the Purchaser could arrange after the Unit is handed over and do not form part of the Unit. No furniture, goods, accessories are included in the sale, unless such items are specifically included in Schedule A of the SPA.

EMBER

PARKFIVE



TYPE

2A

2 BHK



| | |
|--------------|--------------|
| INTERIOR | TOTAL |
| 1,050 SQ.FT. | 1,221 SQ.FT. |

| | |
|------------|--------|
| EXTERIOR | FLOORS |
| 171 SQ.FT. | 2-11 |

LAKE VIEW



COMMUNITY PARK

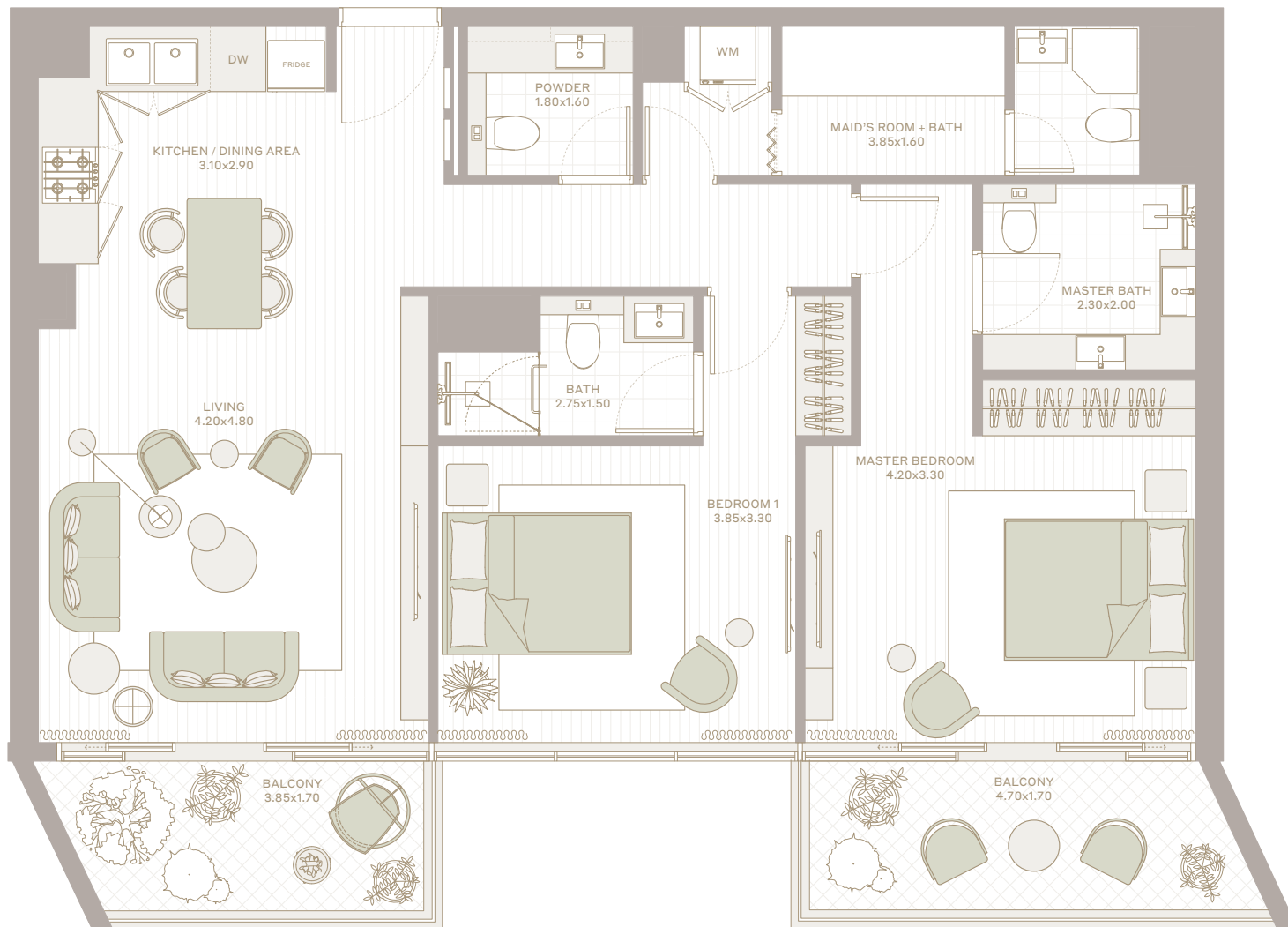
COMMUNITY PARK

LEVEL 2-10

CENTRAL PARK



LEVEL 11



All the dimensions are in square feet. The Unit shown is typical, and actual Unit may vary in dimensions, areas, layout, material specification, orientation, and location. Some of the Units may have a mirrored layout of the above plan. Unit Windows, Façade, Balcony door location, Fixtures, Kitchen Cabinets, Sanitary ware, and Wardrobes, including each of their location as shown in the plan is indicative and subject to revision by the Seller. All fixtures, fittings, goods, accessories, and furniture reflected/displayed in this plan(s) are strictly illustrative and representational (not actual) in nature and are only for the purpose of illustrating /reflecting one of the possible layouts which the Purchaser could arrange after the Unit is handed over and do not form part of the Unit. No furniture, goods, accessories are included in the sale, unless such items are specifically included in Schedule A of the SPA.

EMBER

PARKFIVE



TYPE

05

2 BHK



| | |
|--------------|--------------|
| INTERIOR | TOTAL |
| 1,101 SQ.FT. | 1,425 SQ.FT. |

| | |
|------------|--------|
| EXTERIOR | FLOORS |
| 324 SQ.FT. | 2-10 |

LAKE VIEW

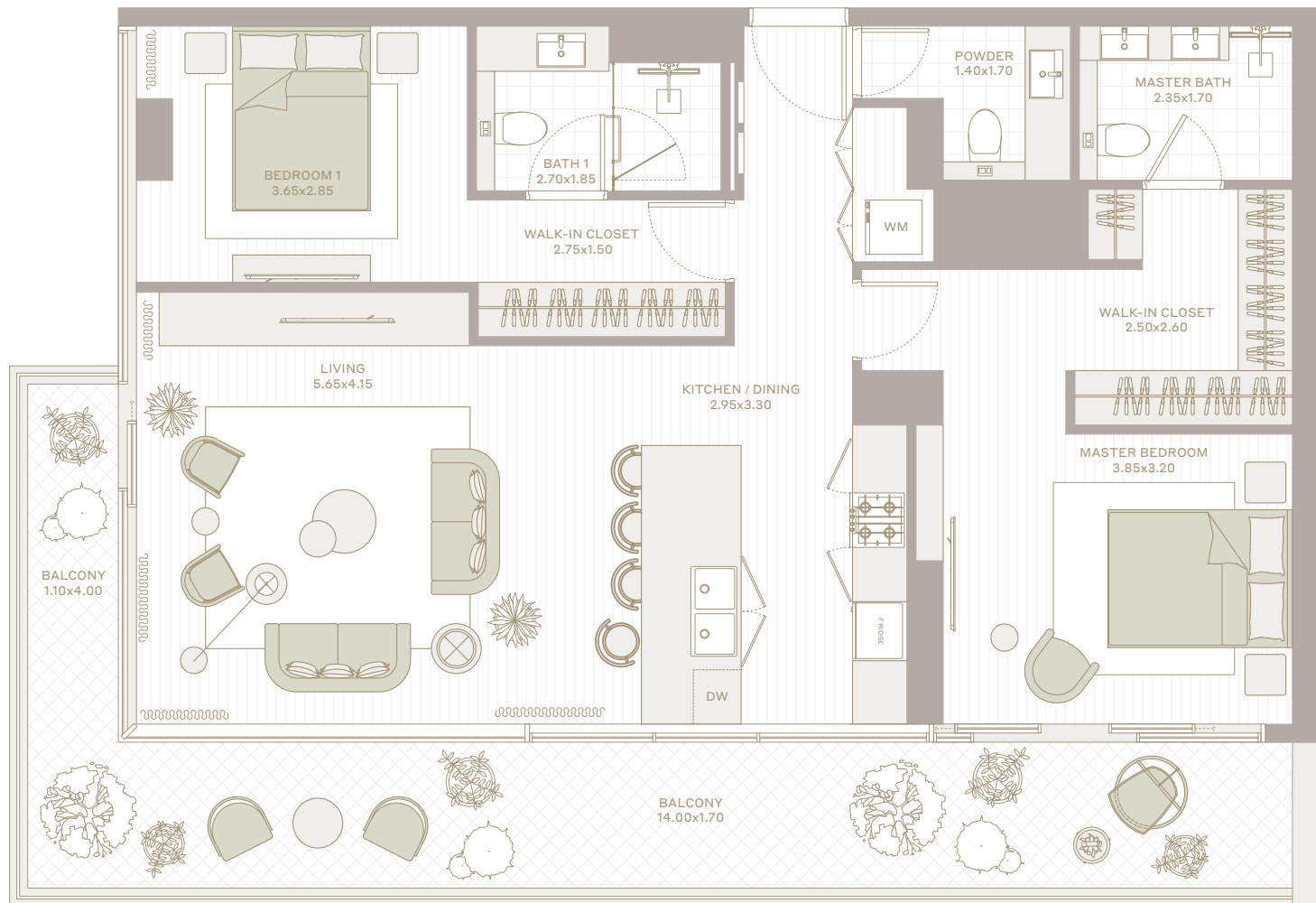


COMMUNITY PARK

COMMUNITY PARK

LEVEL 2-10

CENTRAL PARK



All the dimensions are in square feet. The Unit shown is typical, and actual Unit may vary in dimensions, areas, layout, material specification, orientation, and location. Some of the Units may have a mirrored layout of the above plan. Unit Windows, Façade, Balcony door location, Fixtures, Kitchen Cabinets, Sanitary ware, and Wardrobes, including each of their location as shown in the plan is indicative and subject to revision by the Seller. All fixtures, fittings, goods, accessories, and furniture reflected/displayed in this plan(s) are strictly illustrative and representational (not actual) in nature and are only for the purpose of illustrating /reflecting one of the possible layouts which the Purchaser could arrange after the Unit is handed over and do not form part of the Unit. No furniture, goods, accessories are included in the sale, unless such items are specifically included in Schedule A of the SPA.

EMBER

PARKFIVE



TYPE

06

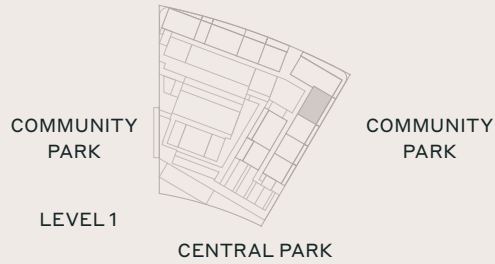
2 BHK



| | |
|------------|--------------|
| INTERIOR | TOTAL |
| 994 SQ.FT. | 1,153 SQ.FT. |

| | |
|------------|--------|
| EXTERIOR | FLOORS |
| 158 SQ.FT. | 1-11 |

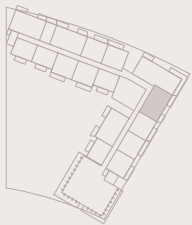
LAKE VIEW



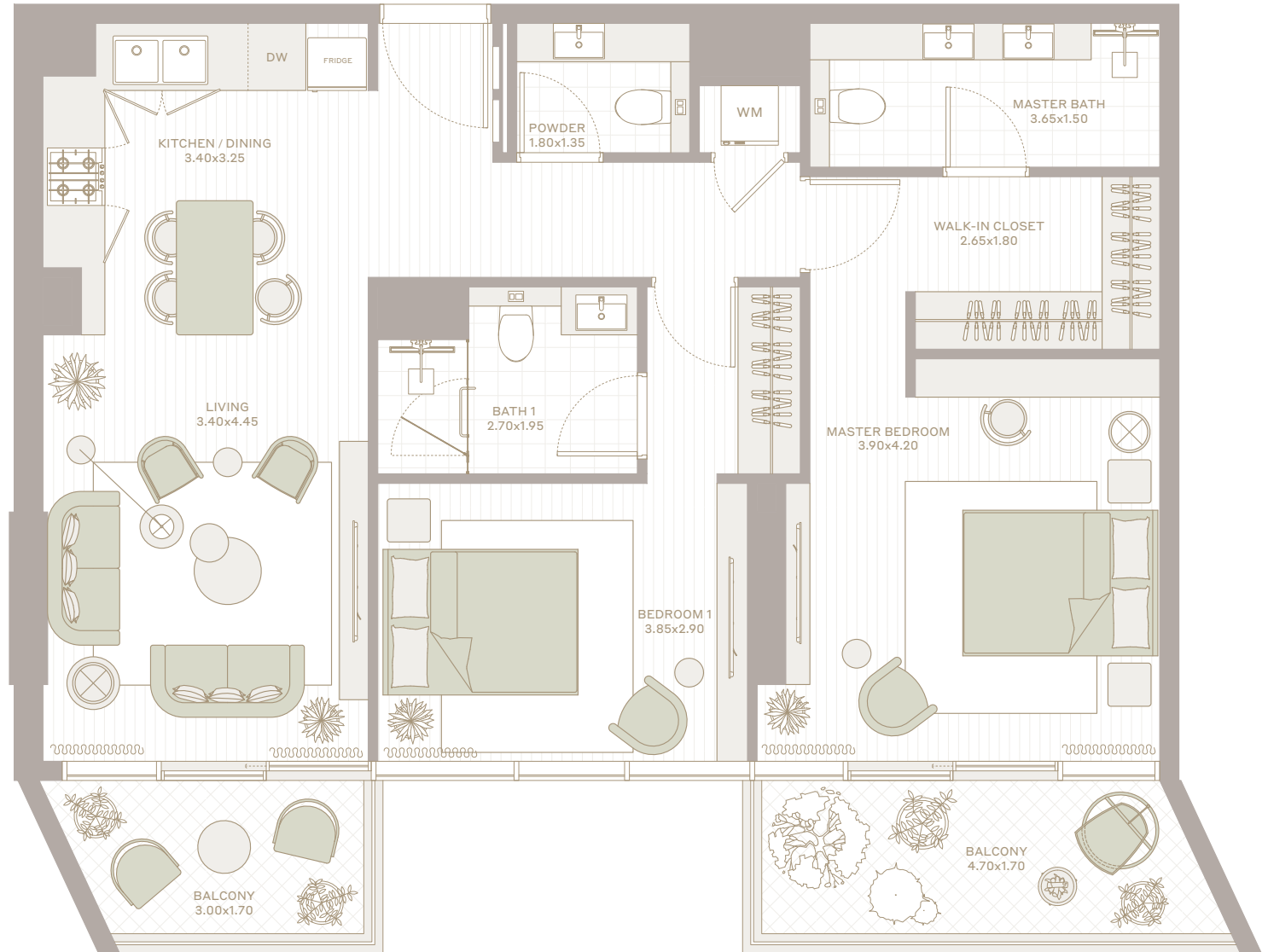
LEVEL 1



LEVEL 2-10



LEVEL 11



All the dimensions are in square feet. The Unit shown is typical, and actual Unit may vary in dimensions, areas, layout, material specification, orientation, and location. Some of the Units may have a mirrored layout of the above plan. Unit Windows, Façade, Balcony door location, Fixtures, Kitchen Cabinets, Sanitary ware, and Wardrobes, including each of their location as shown in the plan is indicative and subject to revision by the Seller. All fixtures, fittings, goods, accessories, and furniture reflected/displayed in this plan(s) are strictly illustrative and representational (not actual) in nature and are only for the purpose of illustrating /reflecting one of the possible layouts which the Purchaser could arrange after the Unit is handed over and do not form part of the Unit. No furniture, goods, accessories are included in the sale, unless such items are specifically included in Schedule A of the SPA.

EMBER

PARKFIVE

3BEDROOM





TYPE

01

3 BHK



| | |
|--------------|--------------|
| INTERIOR | TOTAL |
| 1,443 SQ.FT. | 1,827 SQ.FT. |

| | |
|------------|--------|
| EXTERIOR | FLOORS |
| 384 SQ.FT. | 2-10 |

LAKE VIEW

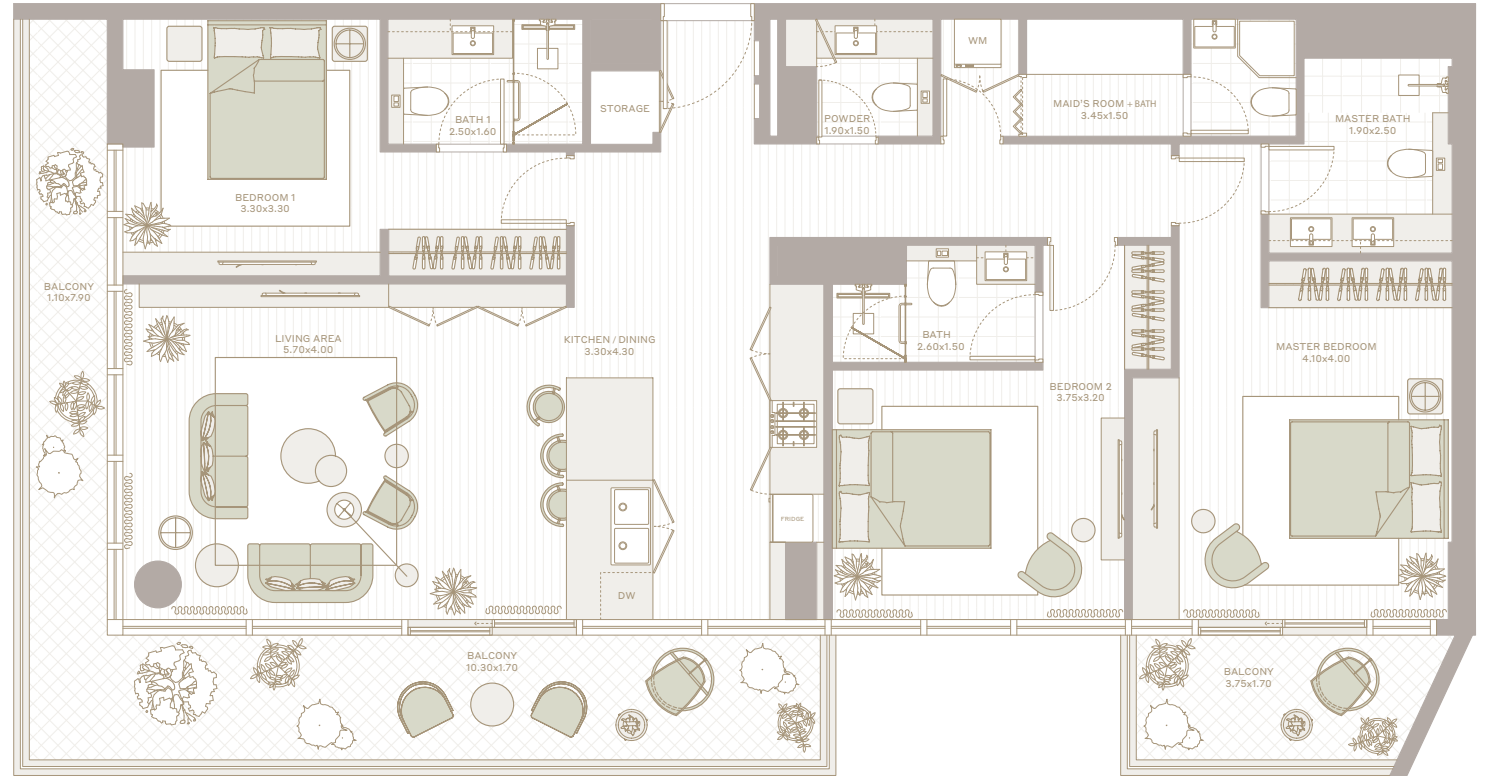


COMMUNITY PARK

COMMUNITY PARK

LEVEL 2-10

CENTRAL PARK



All the dimensions are in square feet. The Unit shown is typical, and actual Unit may vary in dimensions, areas, layout, material specification, orientation, and location. Some of the Units may have a mirrored layout of the above plan. Unit Windows, Façade, Balcony door location, Fixtures, Kitchen Cabinets, Sanitary ware, and Wardrobes, including each of their location as shown in the plan is indicative and subject to revision by the Seller. All fixtures, fittings, goods, accessories, and furniture reflected/displayed in this plan(s) are strictly illustrative and representational (not actual) in nature and are only for the purpose of illustrating /reflecting one of the possible layouts which the Purchaser could arrange after the Unit is handed over and do not form part of the Unit. No furniture, goods, accessories are included in the sale, unless such items are specifically included in Schedule A of the SPA.



TYPE

02

3 BHK



| | |
|--------------|--------------|
| INTERIOR | TOTAL |
| 1,411 SQ.FT. | 1,777 SQ.FT. |

| | |
|------------|--------|
| EXTERIOR | FLOORS |
| 366 SQ.FT. | 2-11 |

LAKE VIEW



COMMUNITY PARK

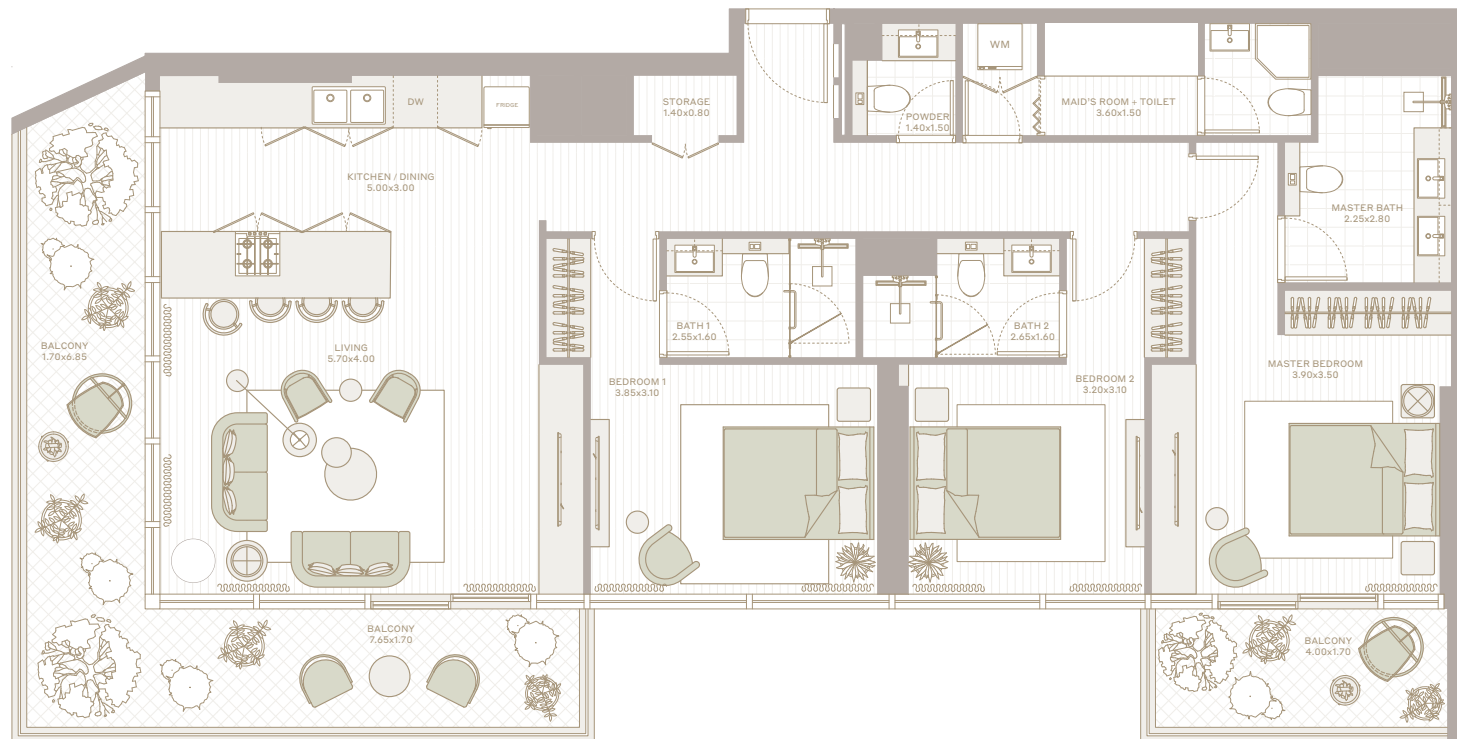
COMMUNITY PARK

LEVEL 2-10

CENTRAL PARK



LEVEL 11



All the dimensions are in square feet. The Unit shown is typical, and actual Unit may vary in dimensions, areas, layout, material specification, orientation, and location. Some of the Units may have a mirrored layout of the above plan. Unit Windows, Façade, Balcony door location, Fixtures, Kitchen Cabinets, Sanitary ware, and Wardrobes, including each of their location as shown in the plan is indicative and subject to revision by the Seller. All fixtures, fittings, goods, accessories, and furniture reflected/displayed in this plan(s) are strictly illustrative and representational (not actual) in nature and are only for the purpose of illustrating /reflecting one of the possible layouts which the Purchaser could arrange after the Unit is handed over and do not form part of the Unit. No furniture, goods, accessories are included in the sale, unless such items are specifically included in Schedule A of the SPA.

EMBER

PARKFIVE