



UNIT PLANS



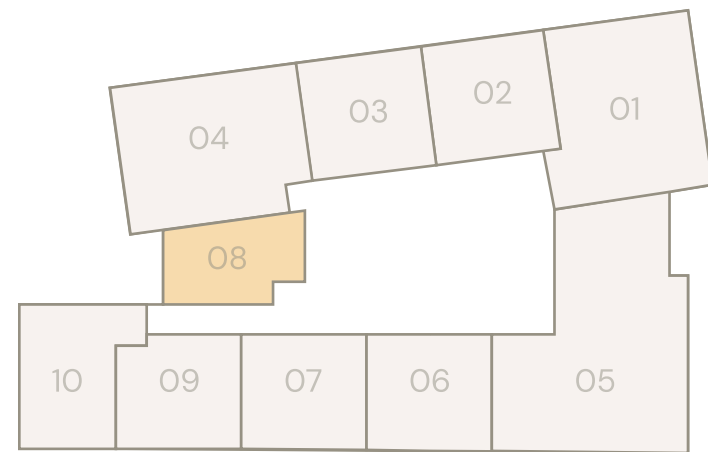
Developed by SRG | Designed by ERGA

STUDIO TYPE 1

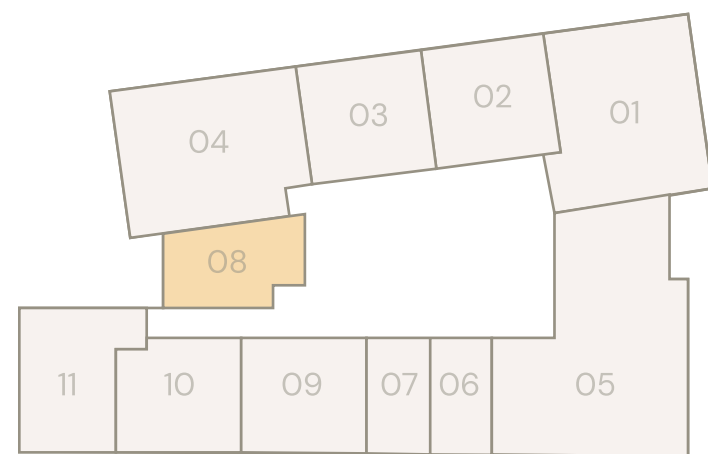
A spacious studio with floor-to-ceiling windows, offering plenty of natural light and a balcony overlooking the community park. Its open-plan design ensures a comfortable living area, making it ideal for young professionals and couples. Available on all floors.

TYPICAL SIZES:

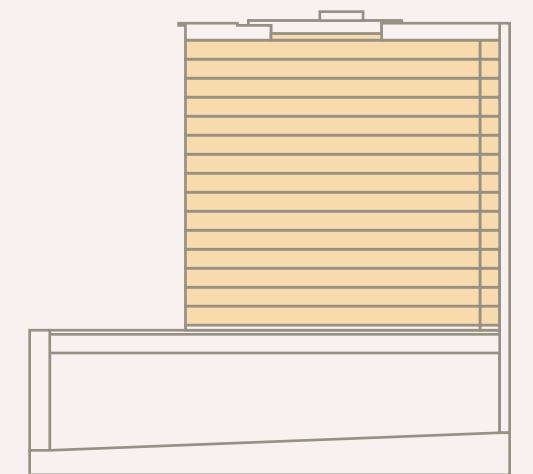
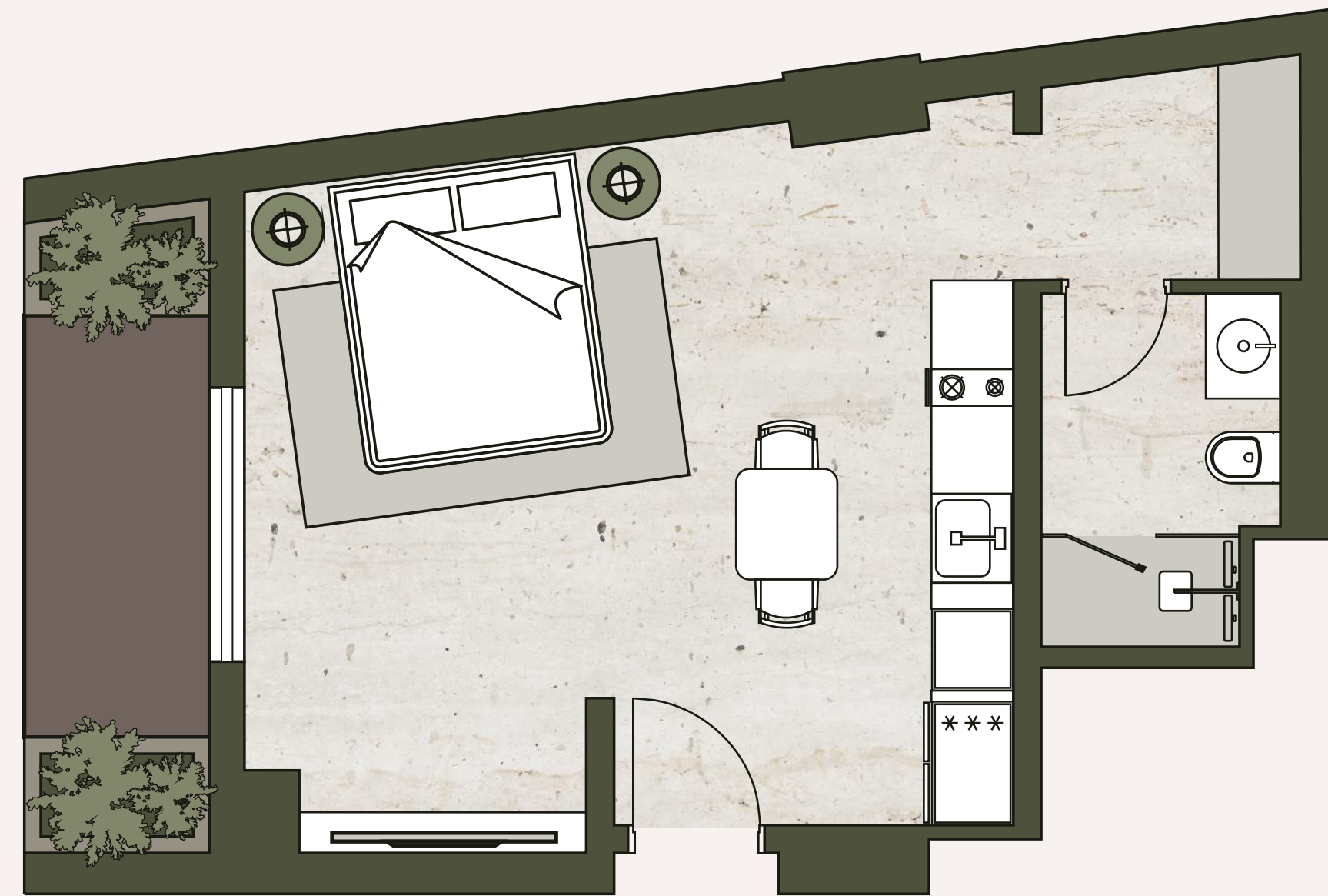
| | |
|---------------|-----------|
| Unit Area: | 440 SQFT. |
| Balcony Area: | 39 SQFT. |
| Total Area: | 479 SQFT. |



2-5 FLOORS



6-16 FLOORS



2 - 16 FLOORS

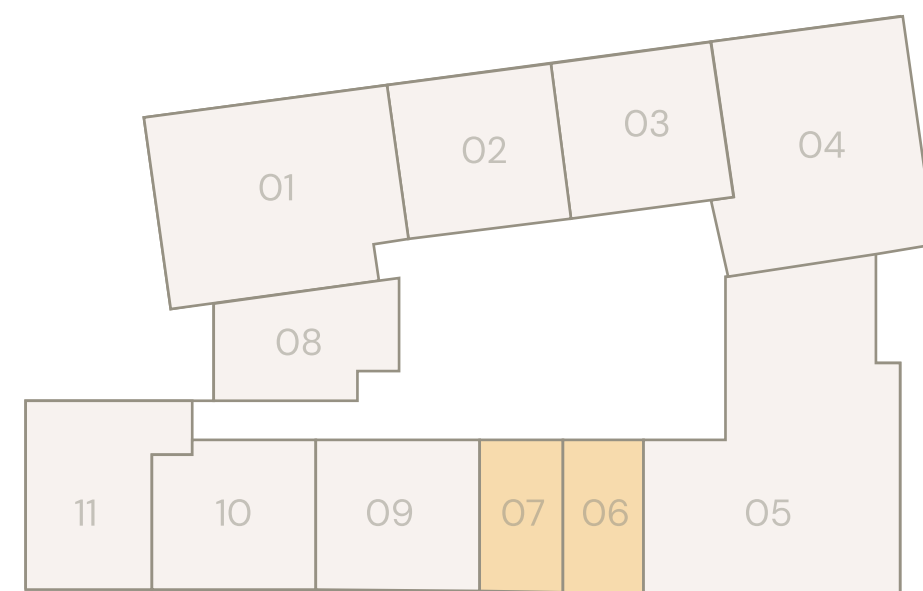
Sizes may vary from floor to floor. Please note that the information that we distribute is produced with great care and believed to be correct at the time of production to the best of our knowledge. Pictures, layouts and other details displayed are given as a general guide and may change from time to time in accordance with the final designs of the development and appropriate planning permissions. We endeavour to ensure that the details we provide are accurate and well researched at all times, however we cannot ultimately warrant the accuracy of that information and cannot be held liable for any reliance you may make of or put on it except as specifically agreed with us in any further agreement we may make with you in writing.
All FFE & loose furniture including TV cabinet are indicative only. Units will be handed over in semi-furnished conditions with built-in wardrobes & kitchen cabinets with built-in kitchen appliances only.

STUDIO TYPE 2

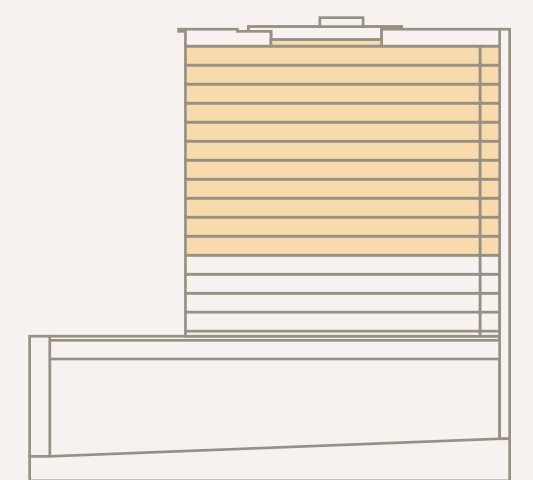
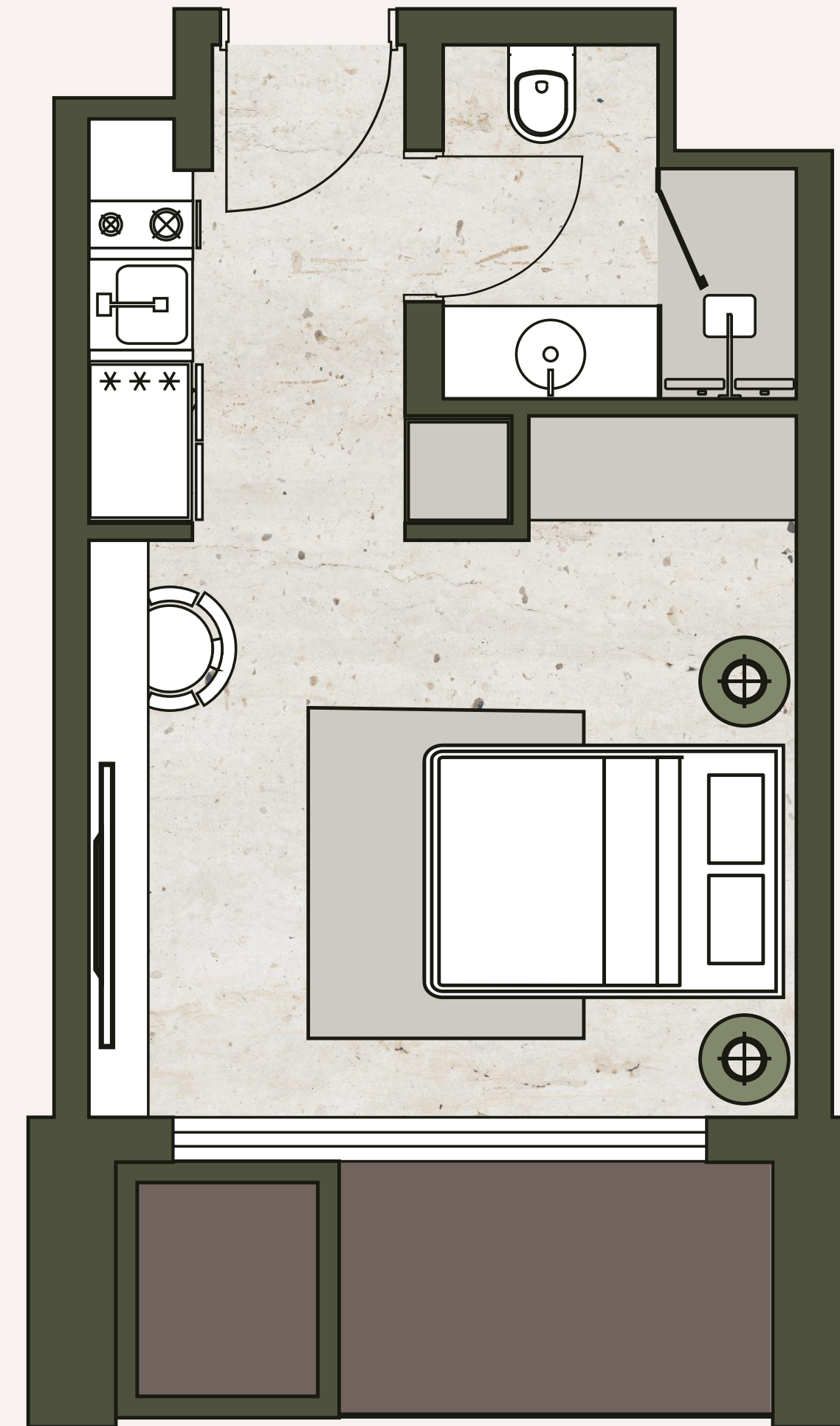
An efficient studio with a well-designed layout that maximizes every inch of space. A smart choice for investors, offering functionality and ease of maintenance. Available from the 6th to the 16th floor.

TYPICAL SIZES:

| | |
|---------------|-----------|
| Unit Area: | 280 SQFT. |
| Balcony Area: | 39 SQFT. |
| Total Area: | 319 SQFT. |



6-16 FLOORS



6TH - 16TH FLOORS

Sizes may vary from floor to floor. Please note that the information that we distribute is produced with great care and believed to be correct at the time of production to the best of our knowledge. Pictures, layouts and other details displayed are given as a general guide and may change from time to time in accordance with the final designs of the development and appropriate planning permissions. We endeavour to ensure that the details we provide are accurate and well researched at all times, however we cannot ultimately warrant the accuracy of that information and cannot be held liable for any reliance you may make of or put on it except as specifically agreed with us in any further agreement we may make with you in writing.

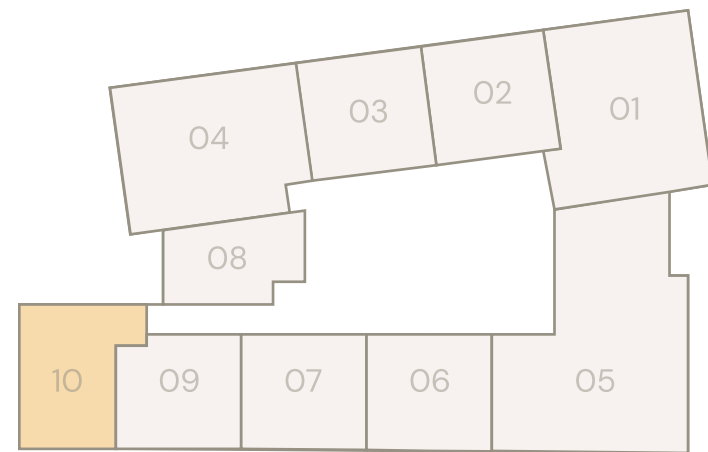
All FFE & loose furniture including TV cabinet are indicative only. Units will be handed over in semi-furnished conditions with built-in wardrobes & kitchen cabinets with built-in kitchen appliances only.

ONE BEDROOM TYPE 1

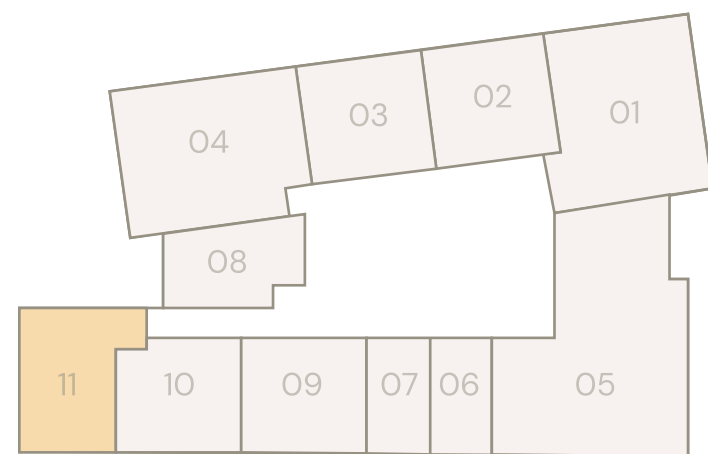
A spacious one-bedroom unit with a well-designed layout and a balcony overlooking the community park. The generous living and dining area makes it perfect for hosting and relaxation, combining style with comfort.

TYPICAL SIZES:

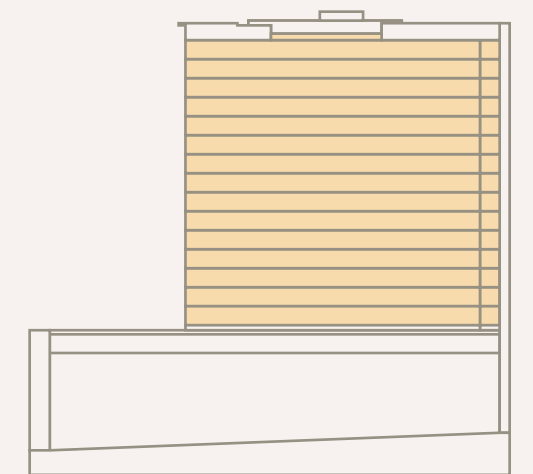
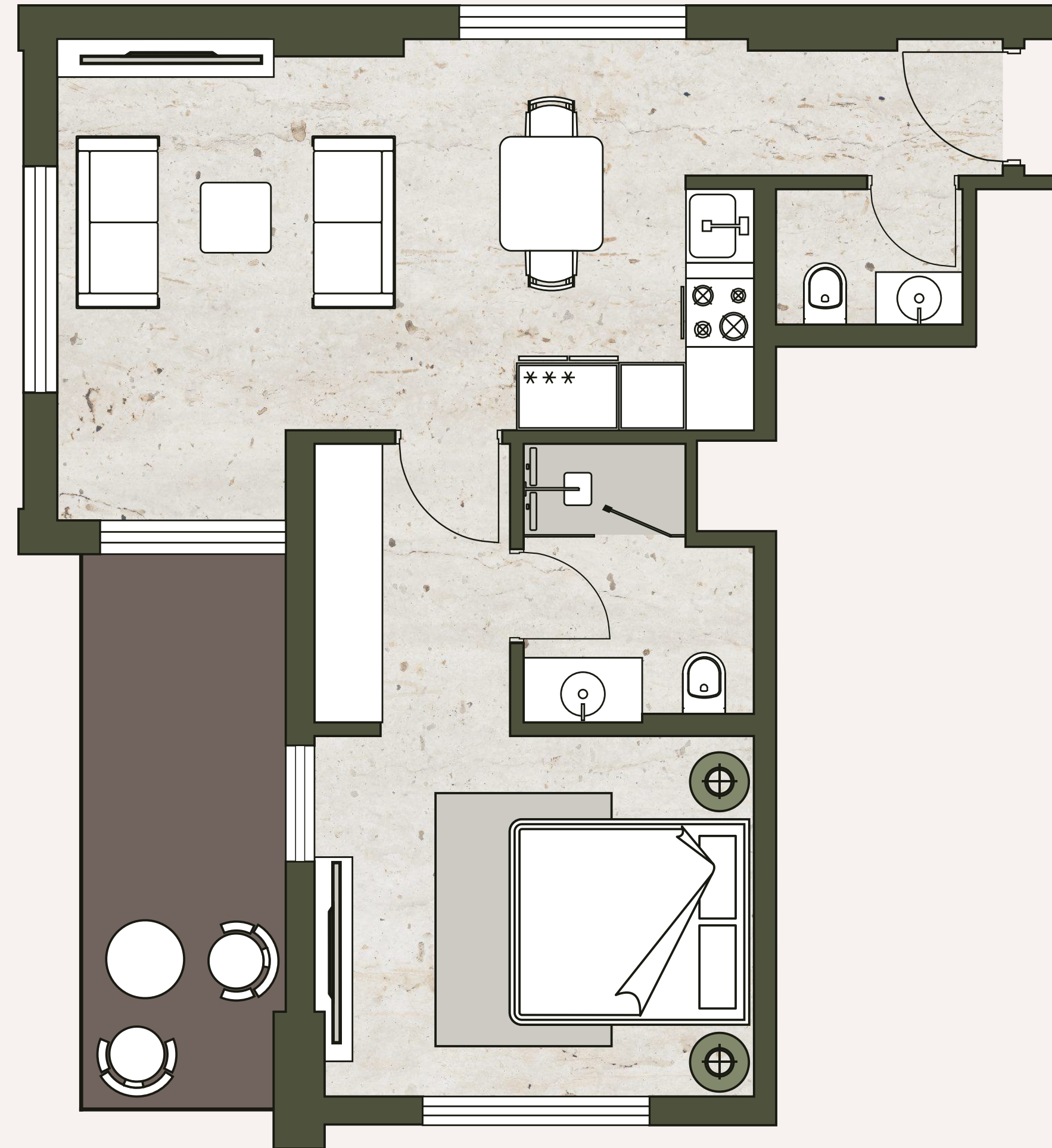
| | |
|---------------|-----------|
| Unit Area: | 648 SQFT. |
| Balcony Area: | 97 SQFT. |
| Total Area: | 745 SQFT. |



2-5 FLOORS



6-16 FLOORS



2-16 FLOORS

Sizes may vary from floor to floor. Please note that the information that we distribute is produced with great care and believed to be correct at the time of production to the best of our knowledge. Pictures, layouts and other details displayed are given as a general guide and may change from time to time in accordance with the final designs of the development and appropriate planning permissions. We endeavour to ensure that the details we provide are accurate and well researched at all times, however we cannot ultimately warrant the accuracy of that information and cannot be held liable for any reliance you may make of or put on it except as specifically agreed with us in any further agreement we may make with you in writing.

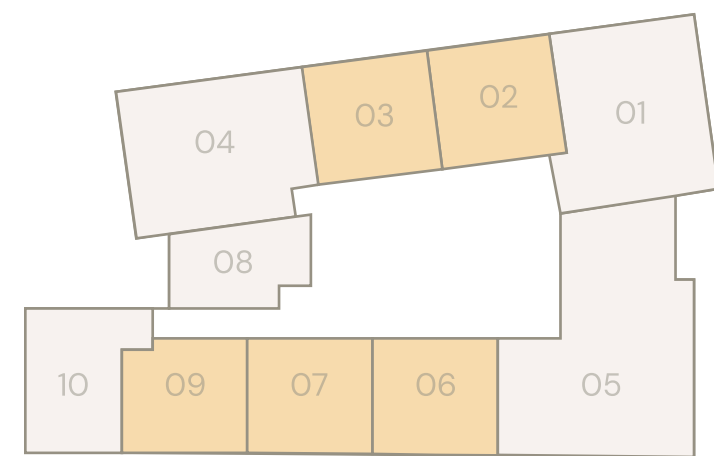
All FFE & loose furniture including TV cabinet are indicative only. Units will be handed over in semi-furnished conditions with built-in wardrobes & kitchen cabinets with built-in kitchen appliances only.

ONE BEDROOM TYPE 2

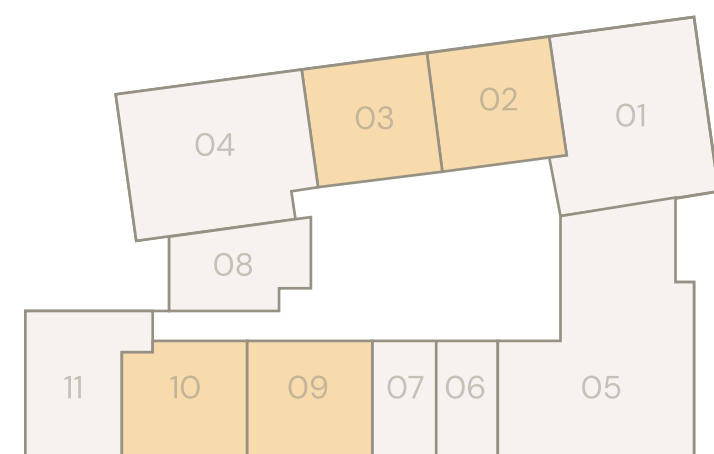
This one-bedroom unit offers a spacious and efficient layout with a balcony for outdoor enjoyment. The seamless transition between living and dining areas creates a cozy and inviting home environment.

TYPICAL SIZES:

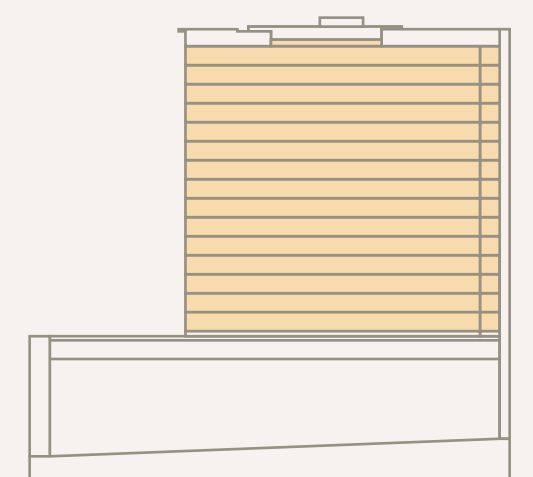
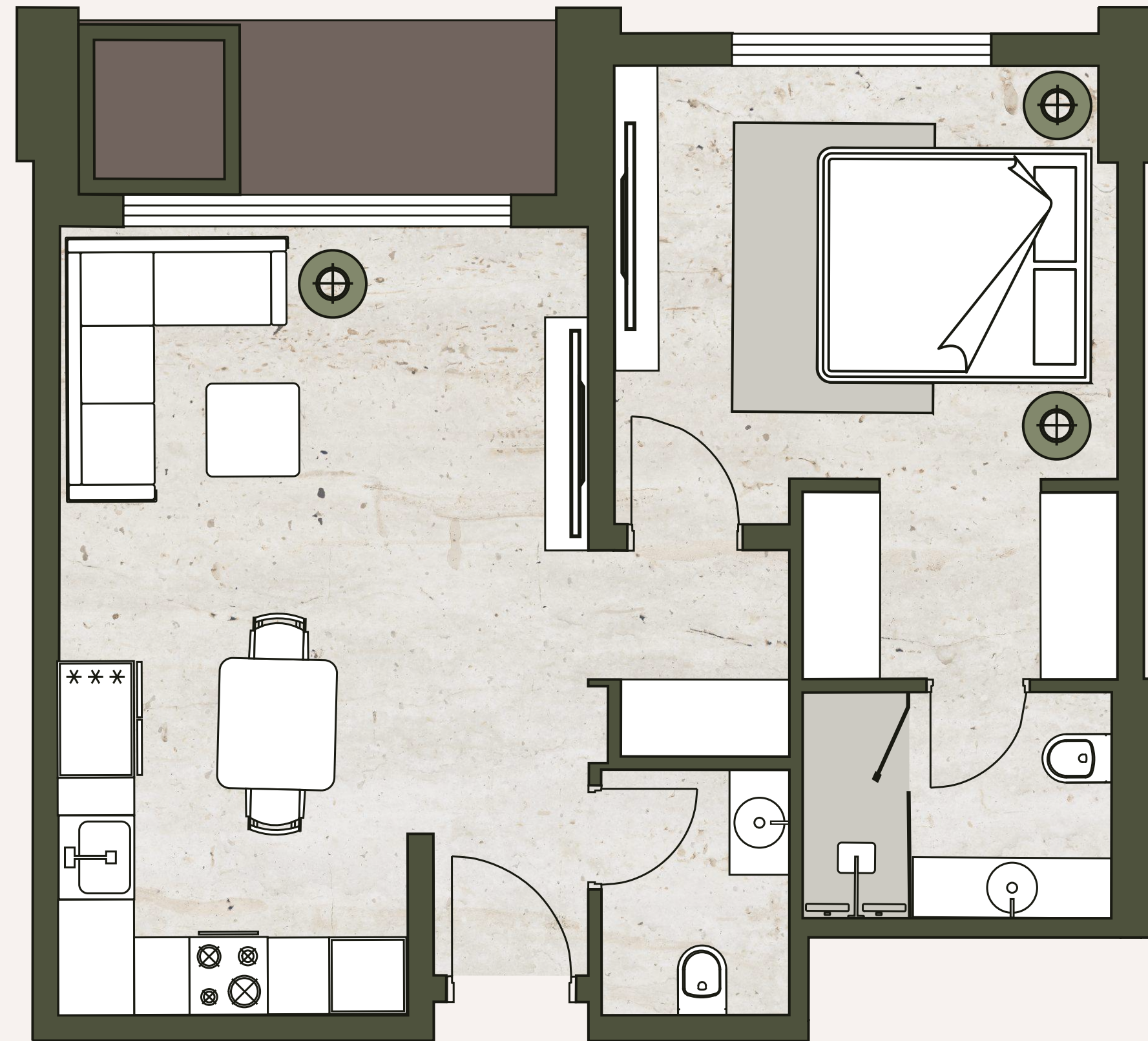
| | |
|---------------|-----------|
| Unit Area: | 630 SQFT. |
| Balcony Area: | 37 SQFT. |
| Total Area: | 668 SQFT. |



2-5 FLOORS



6-16 FLOORS



2-16 FLOORS

Sizes may vary from floor to floor. Please note that the information that we distribute is produced with great care and believed to be correct at the time of production to the best of our knowledge. Pictures, layouts and other details displayed are given as a general guide and may change from time to time in accordance with the final designs of the development and appropriate planning permissions. We endeavour to ensure that the details we provide are accurate and well researched at all times, however we cannot ultimately warrant the accuracy of that information and cannot be held liable for any reliance you may make of or put on it except as specifically agreed with us in any further agreement we may make with you in writing.

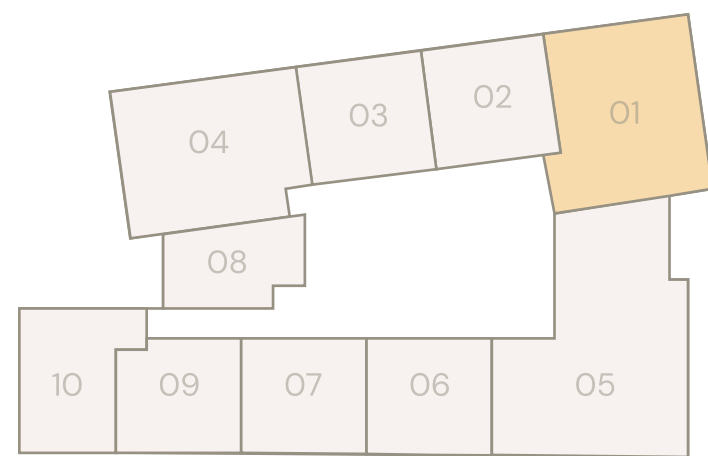
All FFE & loose furniture including TV cabinet are indicative only. Units will be handed over in semi-furnished conditions with built-in wardrobes & kitchen cabinets with built-in kitchen appliances only.

TWO BEDROOM TYPE 1

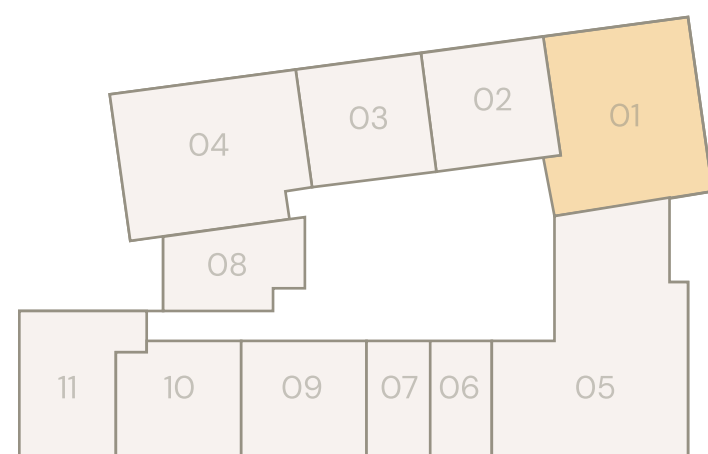
An expansive two-bedroom layout with a semi-closed kitchen and bar, ideal for those who love to cook and entertain. The balcony offers views of Dubai on the horizon, providing a serene atmosphere.

TYPICAL SIZES:

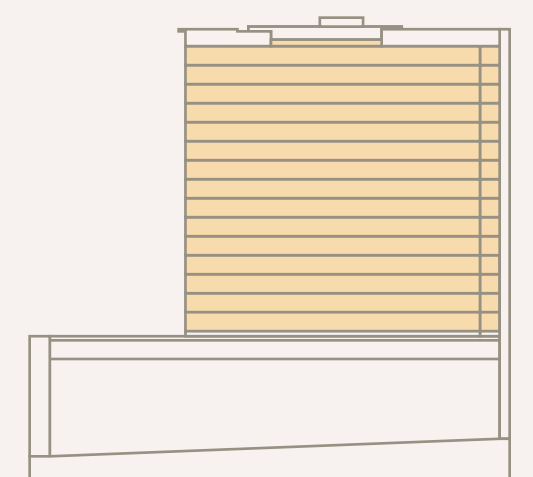
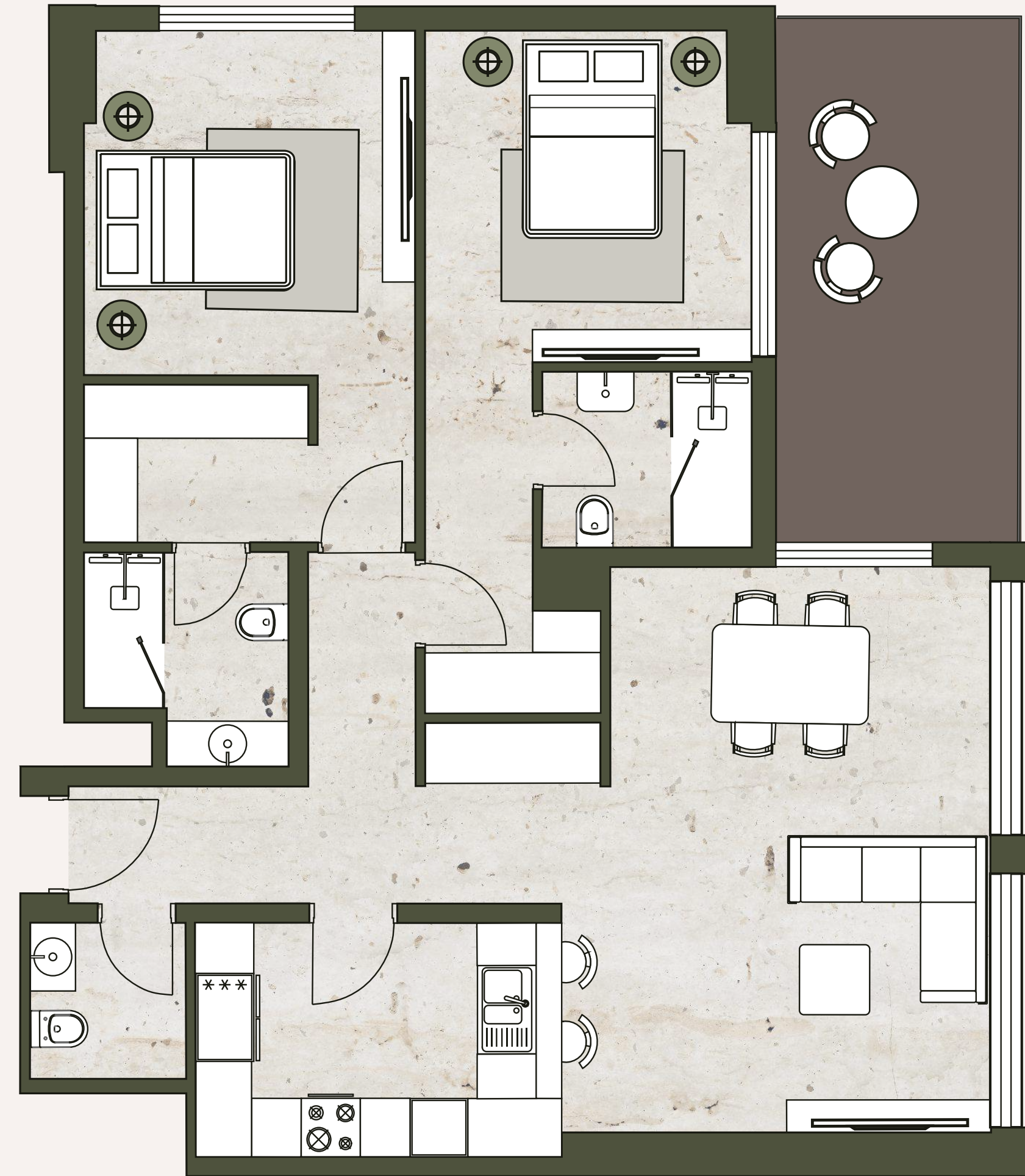
| | |
|---------------|------------|
| Unit Area: | 1112 SQFT. |
| Balcony Area: | 114 SQFT. |
| Total Area: | 1236 SQFT. |



2-5 FLOORS



6-16 FLOORS



2-16 FLOORS

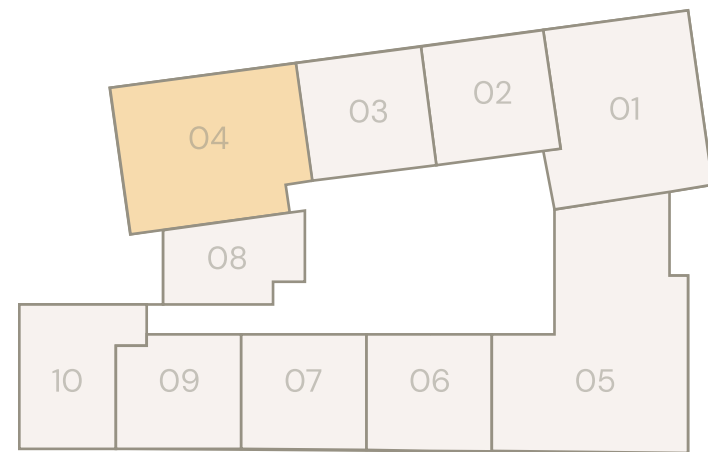
Sizes may vary from floor to floor. Please note that the information that we distribute is produced with great care and believed to be correct at the time of production to the best of our knowledge. Pictures, layouts and other details displayed are given as a general guide and may change from time to time in accordance with the final designs of the development and appropriate planning permissions. We endeavour to ensure that the details we provide are accurate and well researched at all times, however we cannot ultimately warrant the accuracy of that information and cannot be held liable for any reliance you may make of or put on it except as specifically agreed with us in any further agreement we may make with you in writing.
All FFE & loose furniture including TV cabinet are indicative only. Units will be handed over in semi-furnished conditions with built-in wardrobes & kitchen cabinets with built-in kitchen appliances only.

TWO BEDROOM TYPE 2

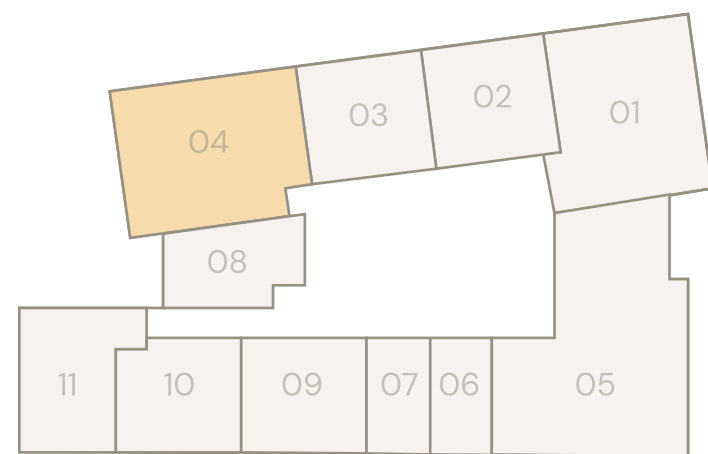
A generous two-bedroom unit with a spacious layout facing the tranquil community park. The well-planned space ensures a comfortable living experience for families, with ample natural light throughout.

TYPICAL SIZES:

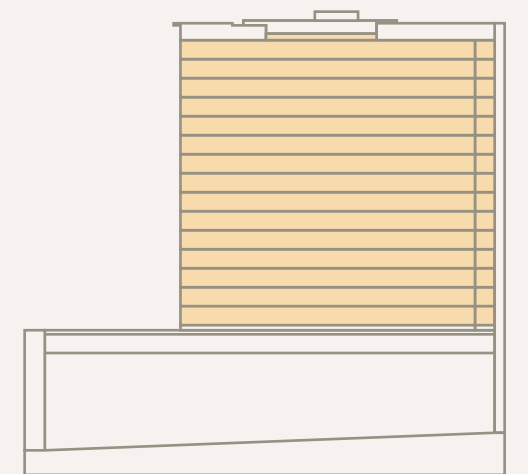
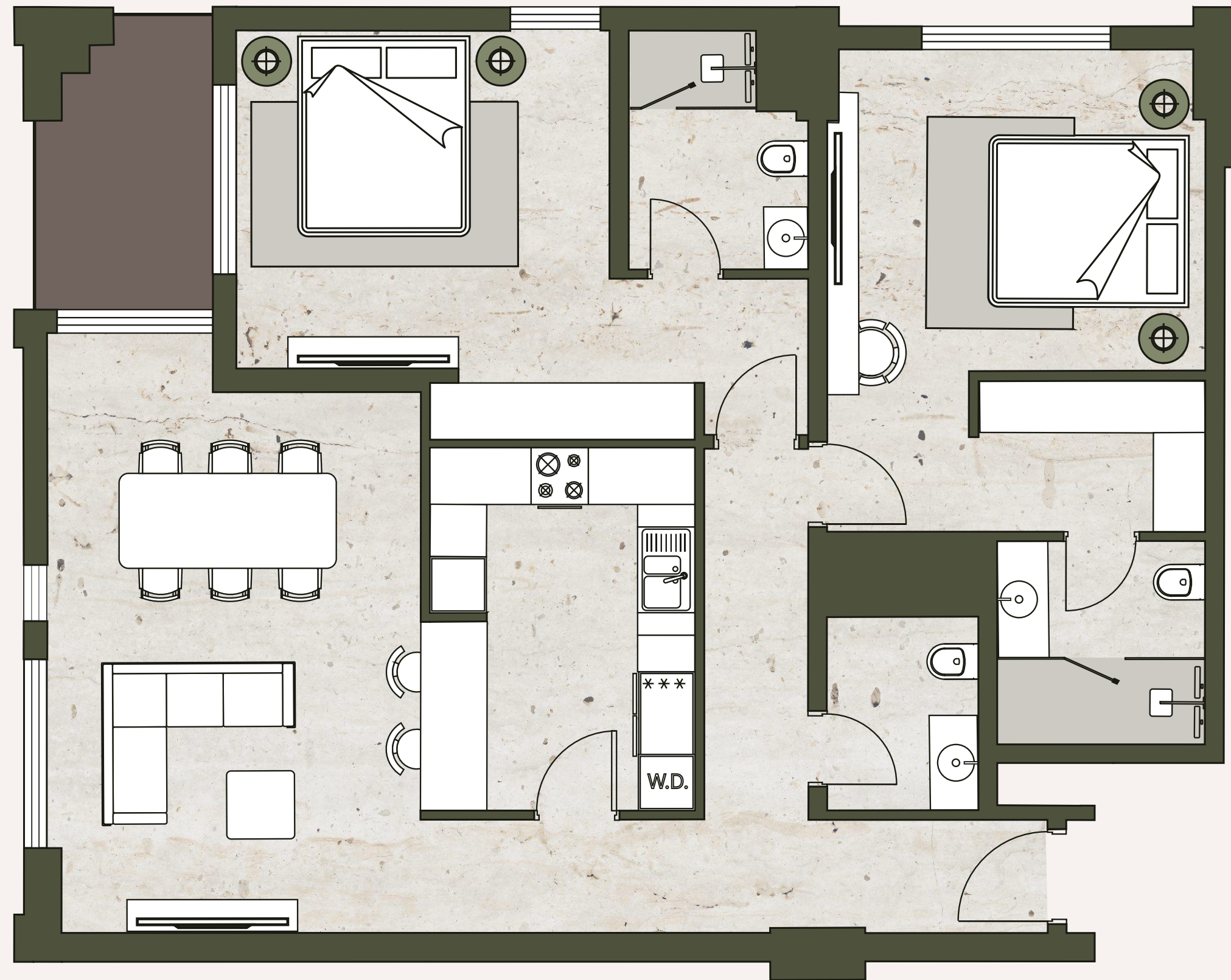
| | |
|---------------|------------|
| Unit Area: | 1243 SQFT. |
| Balcony Area: | 68 SQFT. |
| Total Area: | 1312 SQFT. |



2-5 FLOORS



6-16 FLOORS



2-16 FLOORS

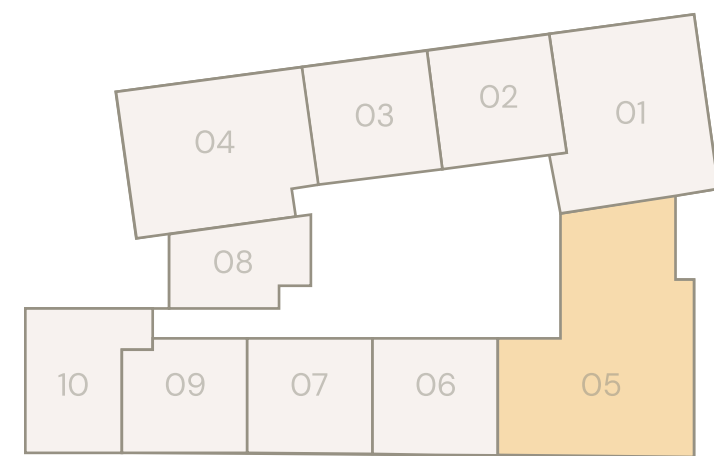
Sizes may vary from floor to floor. Please note that the information that we distribute is produced with great care and believed to be correct at the time of production to the best of our knowledge. Pictures, layouts and other details displayed are given as a general guide and may change from time to time in accordance with the final designs of the development and appropriate planning permissions. We endeavour to ensure that the details we provide are accurate and well researched at all times, however we cannot ultimately warrant the accuracy of that information and cannot be held liable for any reliance you may make of or put on it except as specifically agreed with us in any further agreement we may make with you in writing.
All FFE & loose furniture including TV cabinet are indicative only. Units will be handed over in semi-furnished conditions with built-in wardrobes & kitchen cabinets with built-in kitchen appliances only.

THREE BEDROOM

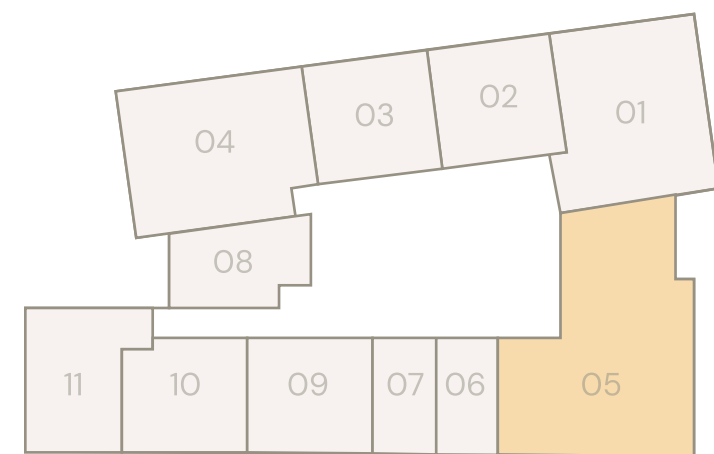
The largest unit, featuring three en-suite bedrooms, a closed kitchen, two balconies, a maid's room, and plenty of storage. The balconies with views of Dubai on the horizon, and the spacious living room is ideal for gatherings.

TYPICAL SIZES:

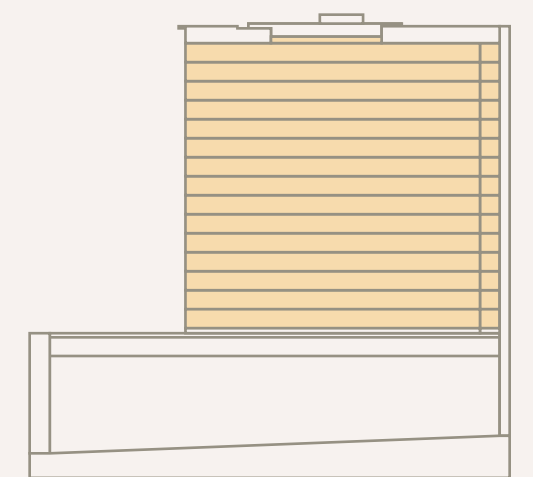
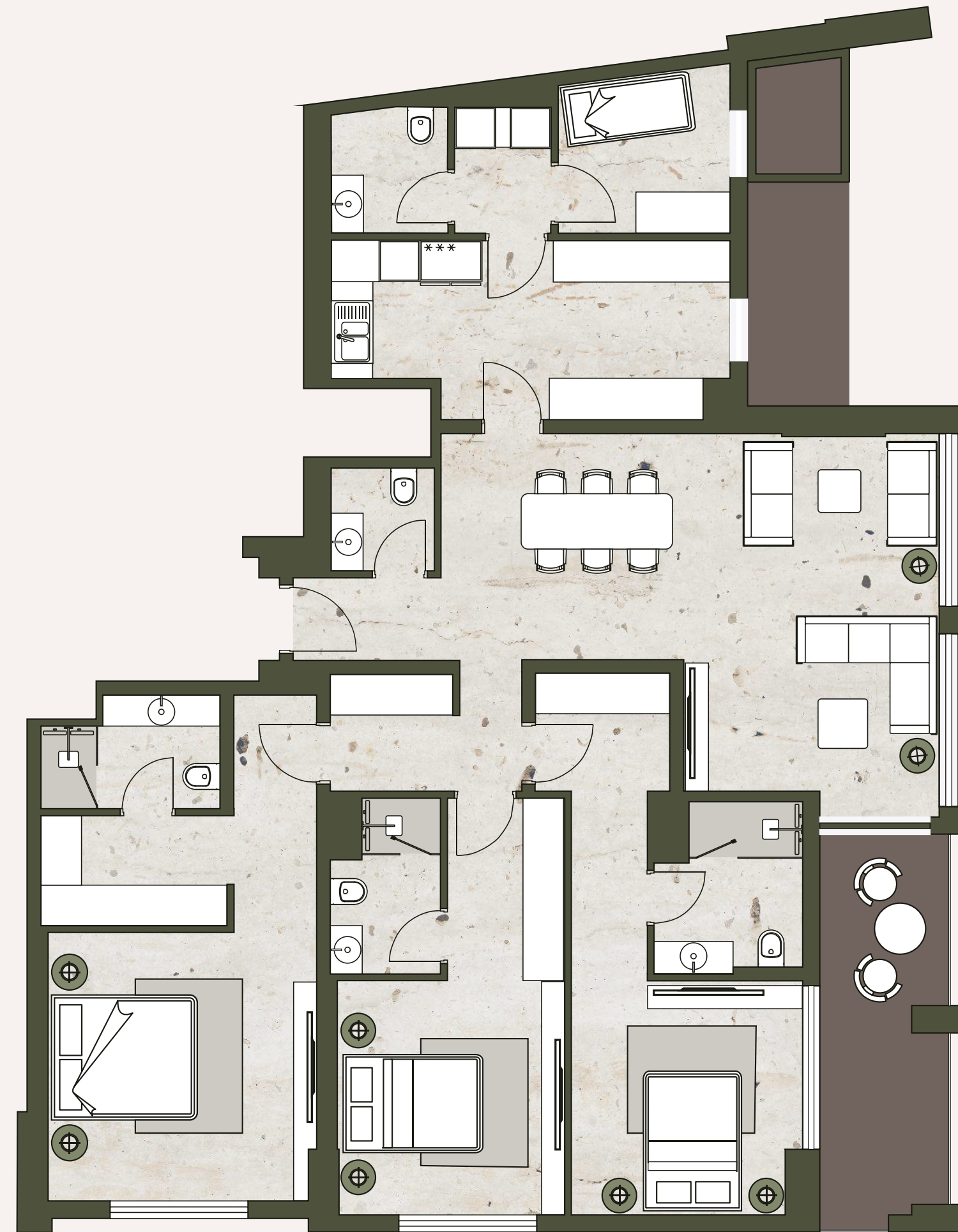
| | |
|---------------|------------|
| Unit Area: | 1749 SQFT. |
| Balcony Area: | 174 SQFT. |
| Total Area: | 1923 SQFT. |



2-5 FLOORS



6-16 FLOORS



2-16 FLOORS

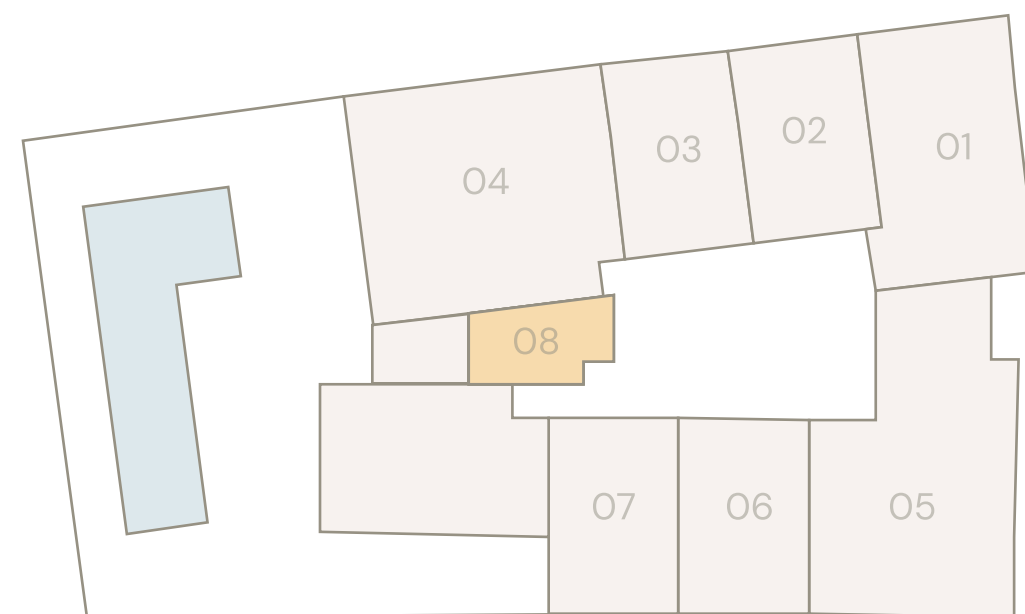
Sizes may vary from floor to floor. Please note that the information that we distribute is produced with great care and believed to be correct at the time of production to the best of our knowledge. Pictures, layouts and other details displayed are given as a general guide and may change from time to time in accordance with the final designs of the development and appropriate planning permissions. We endeavour to ensure that the details we provide are accurate and well researched at all times, however we cannot ultimately warrant the accuracy of that information and cannot be held liable for any reliance you may make of or put on it except as specifically agreed with us in any further agreement we may make with you in writing.
All FFE & loose furniture including TV cabinet are indicative only. Units will be handed over in semi-furnished conditions with built-in wardrobes & kitchen cabinets with built-in kitchen appliances only.

STUDIO TYPE 1G

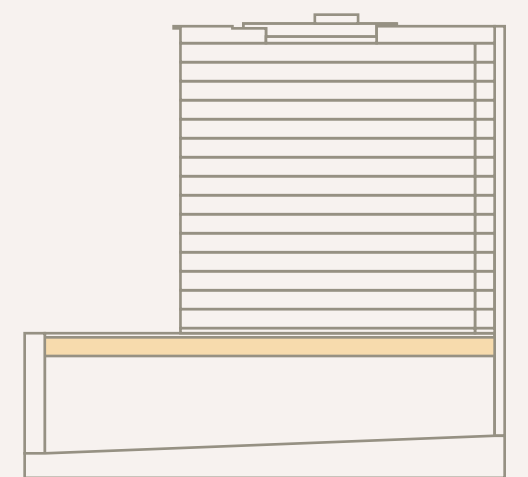
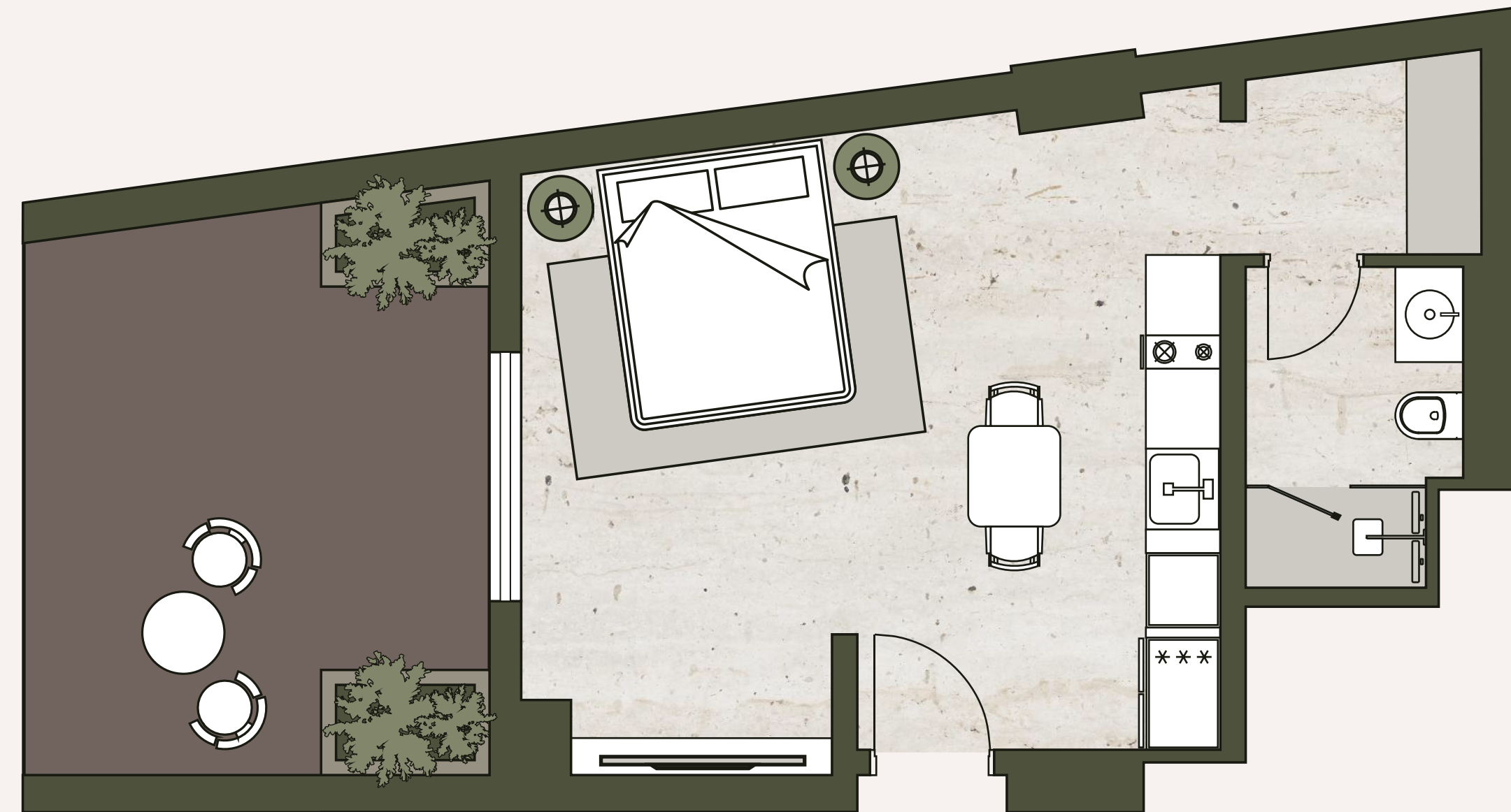
A spacious studio with floor-to-ceiling windows, offering plenty of natural light and a balcony overlooking the community park. Its open-plan design ensures a comfortable living area, making it ideal for young professionals and couples. Available on all floors.

TYPICAL SIZES:

| | |
|---------------|-----------|
| Unit Area: | 440 SQFT. |
| Balcony Area: | 39 SQFT. |
| Total Area: | 479 SQFT. |



1 FLOOR



1 FLOOR

Sizes may vary from floor to floor. Please note that the information that we distribute is produced with great care and believed to be correct at the time of production to the best of our knowledge. Pictures, layouts and other details displayed are given as a general guide and may change from time to time in accordance with the final designs of the development and appropriate planning permissions. We endeavour to ensure that the details we provide are accurate and well researched at all times, however we cannot ultimately warrant the accuracy of that information and cannot be held liable for any reliance you may make of or put on it except as specifically agreed with us in any further agreement we may make with you in writing.

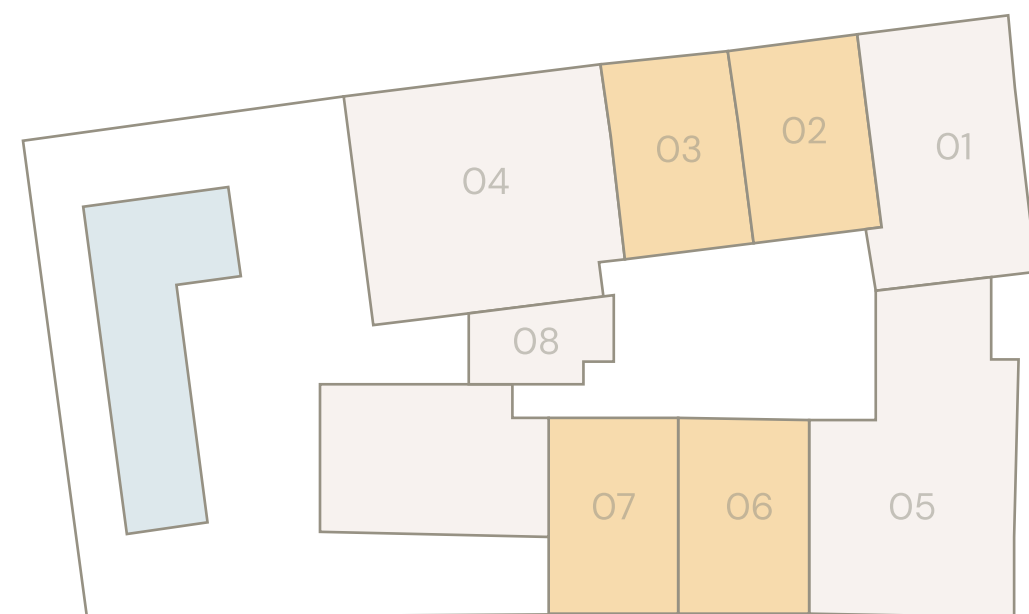
All FFE & loose furniture including TV cabinet are indicative only. Units will be handed over in semi-furnished conditions with built-in wardrobes & kitchen cabinets with built-in kitchen appliances only.

ONE BEDROOM TYPE 2G

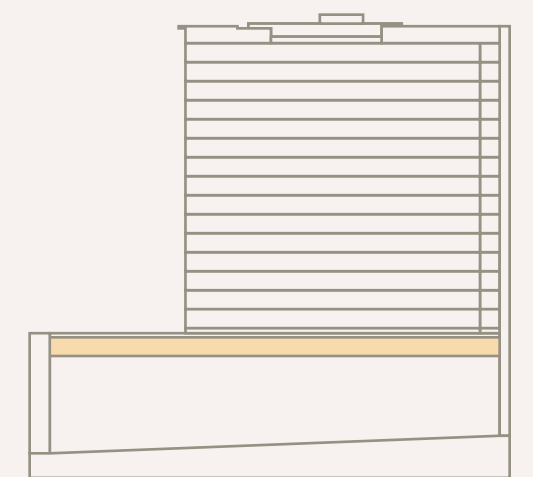
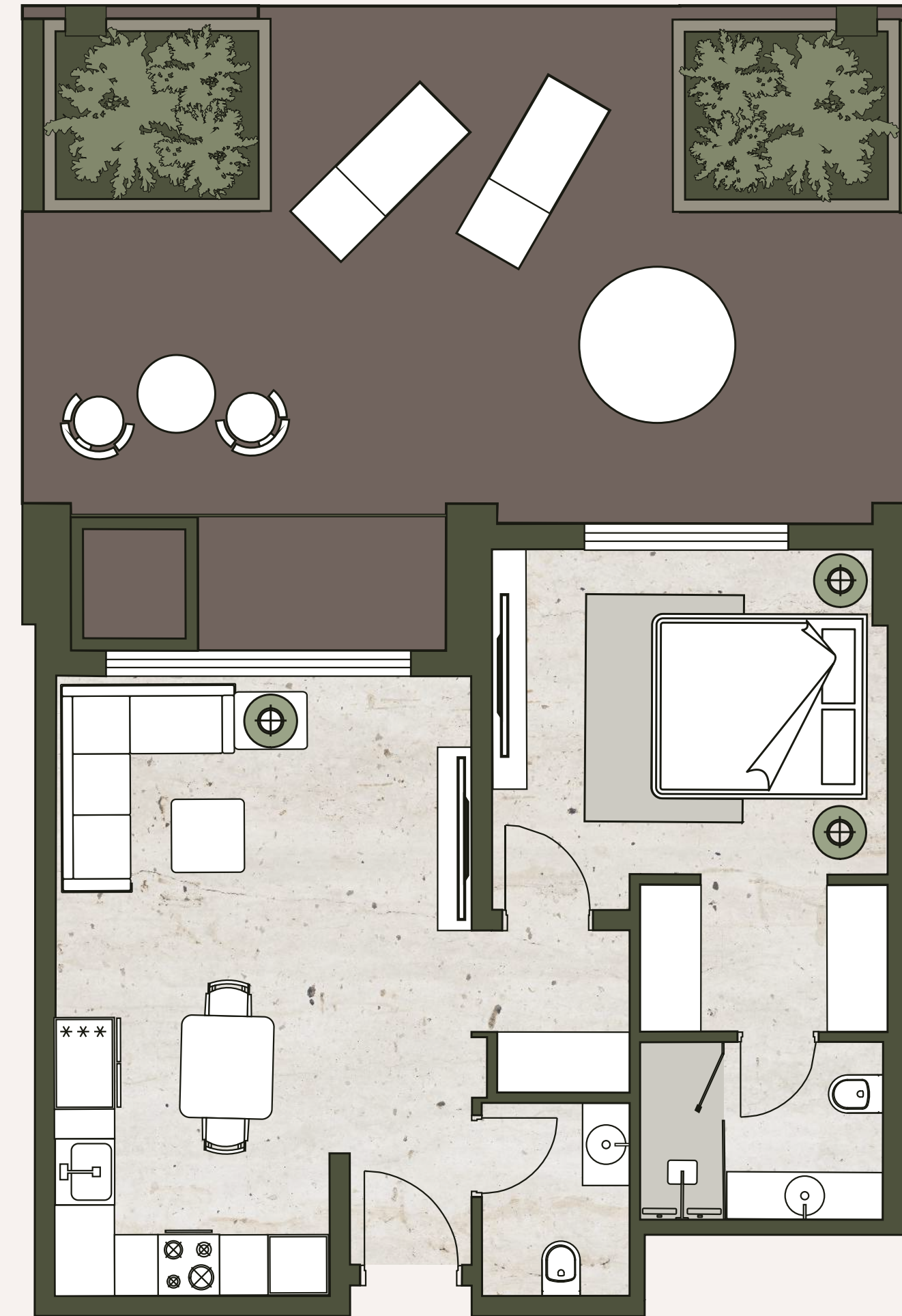
A spacious one-bedroom unit with a large terrace, offering an ideal outdoor space for relaxation and entertaining. The open layout and extended outdoor area make it perfect for those seeking an indoor-outdoor lifestyle.

TYPICAL SIZES:

| | |
|---------------|------------|
| Unit Area: | 630 SQFT. |
| Balcony Area: | 37 SQFT. |
| Terrace Area: | 471 SQFT. |
| Total Area: | 1140 SQFT. |



1 FLOOR



1ST FLOOR

Sizes may vary from floor to floor. Please note that the information that we distribute is produced with great care and believed to be correct at the time of production to the best of our knowledge. Pictures, layouts and other details displayed are given as a general guide and may change from time to time in accordance with the final designs of the development and appropriate planning permissions. We endeavour to ensure that the details we provide are accurate and well researched at all times, however we cannot ultimately warrant the accuracy of that information and cannot be held liable for any reliance you may make of or put on it except as specifically agreed with us in any further agreement we may make with you in writing.

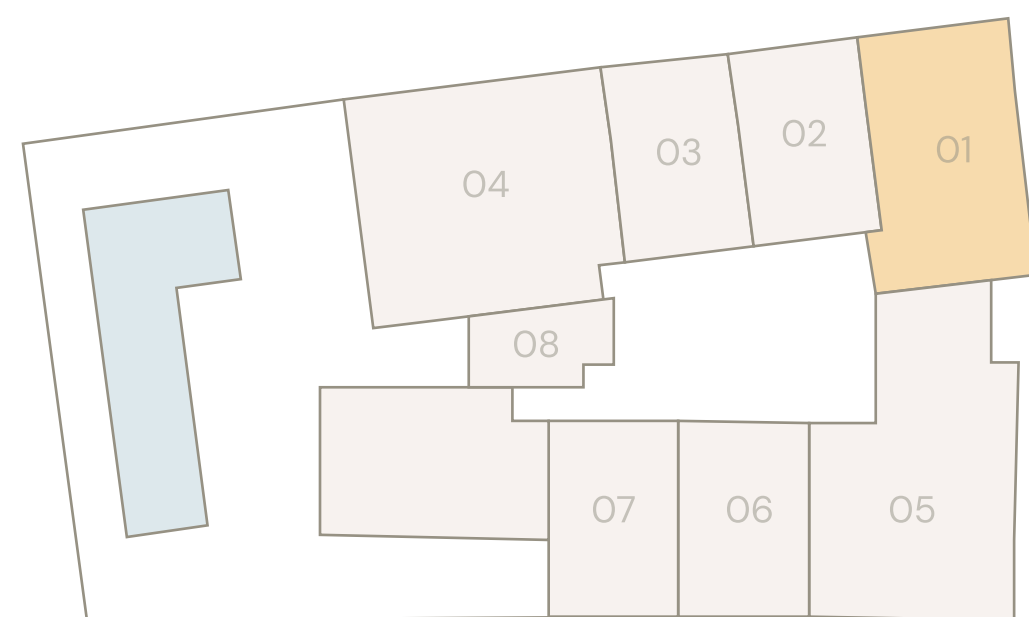
All FFE & loose furniture including TV cabinet are indicative only. Units will be handed over in semi-furnished conditions with built-in wardrobes & kitchen cabinets with built-in kitchen appliances only.

TWO BEDROOM TYPE 1G

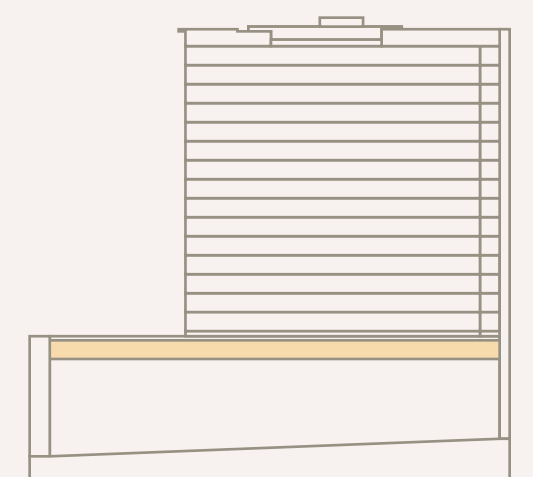
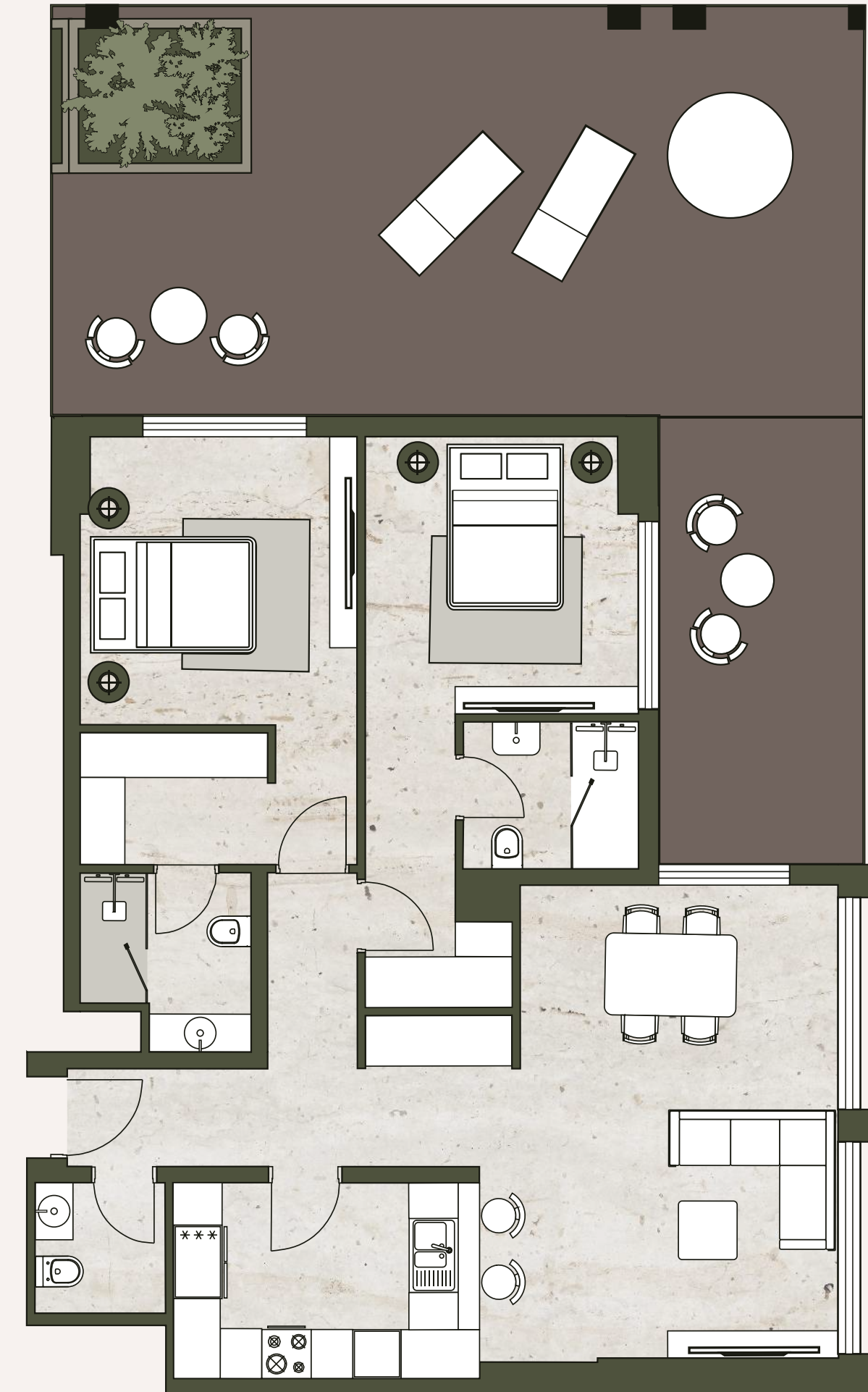
A well-designed two-bedroom unit featuring a large terrace that extends the living space outdoors. Ideal for families or those who enjoy hosting, with ample room for outdoor dining and lounging.

TYPICAL SIZES:

| | |
|---------------|------------|
| Unit Area: | 1122 SQFT. |
| Balcony Area: | 114 SQFT. |
| Terrace Area: | 584 SQFT. |
| Total Area: | 1820 SQFT. |



1 FLOOR



1ST FLOOR

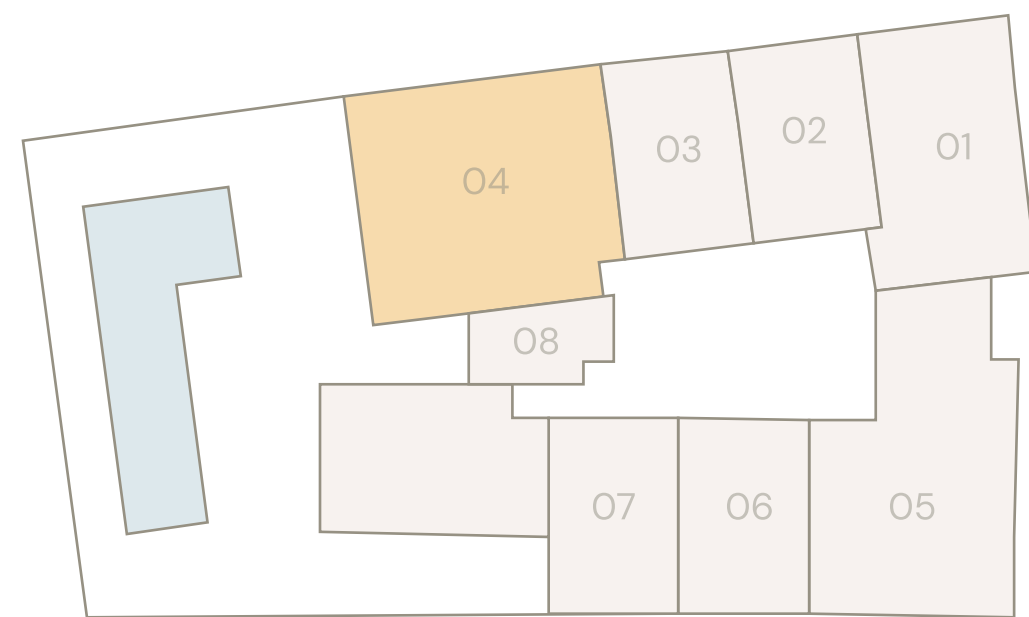
Sizes may vary from floor to floor. Please note that the information that we distribute is produced with great care and believed to be correct at the time of production to the best of our knowledge. Pictures, layouts and other details displayed are given as a general guide and may change from time to time in accordance with the final designs of the development and appropriate planning permissions. We endeavour to ensure that the details we provide are accurate and well researched at all times, however we cannot ultimately warrant the accuracy of that information and cannot be held liable for any reliance you may make of or put on it except as specifically agreed with us in any further agreement we may make with you in writing.
All FFE & loose furniture including TV cabinet are indicative only. Units will be handed over in semi-furnished conditions with built-in wardrobes & kitchen cabinets with built-in kitchen appliances only.

TWO BEDROOM TYPE 2G

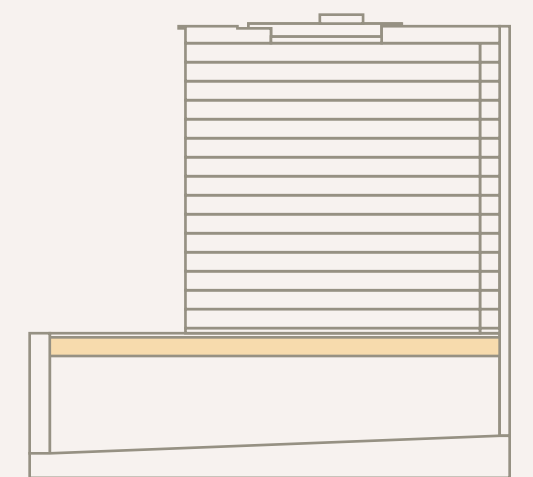
This two-bedroom unit offers a large terrace, providing an inviting space for outdoor gatherings. The well-thought-out interior layout ensures comfort and functionality, complemented by the expansive outdoor area.

TYPICAL SIZES:

| | |
|---------------|------------|
| Unit Area: | 1243 SQFT. |
| Balcony Area: | 68 SQFT. |
| Terrace Area: | 1379 SQFT. |
| Total Area: | 2679 SQFT. |



1 FLOOR



1ST FLOOR

Sizes may vary from floor to floor. Please note that the information that we distribute is produced with great care and believed to be correct at the time of production to the best of our knowledge. Pictures, layouts and other details displayed are given as a general guide and may change from time to time in accordance with the final designs of the development and appropriate planning permissions. We endeavour to ensure that the details we provide are accurate and well researched at all times, however we cannot ultimately warrant the accuracy of that information and cannot be held liable for any reliance you may make of or put on it except as specifically agreed with us in any further agreement we may make with you in writing.

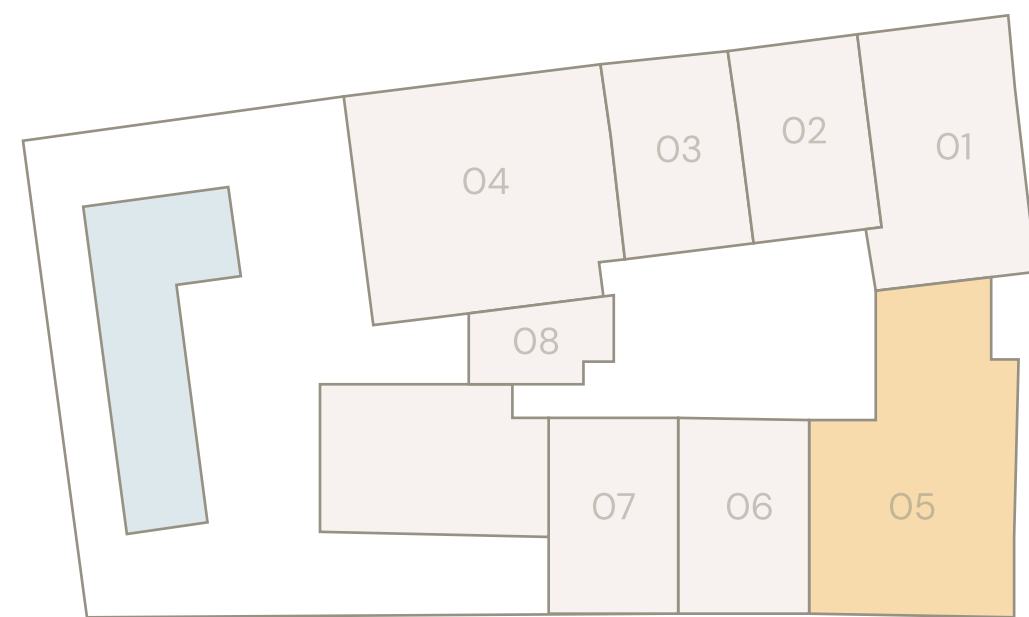
All FFE & loose furniture including TV cabinet are indicative only. Units will be handed over in semi-furnished conditions with built-in wardrobes & kitchen cabinets with built-in kitchen appliances only.

THREE BEDROOM TYPE G

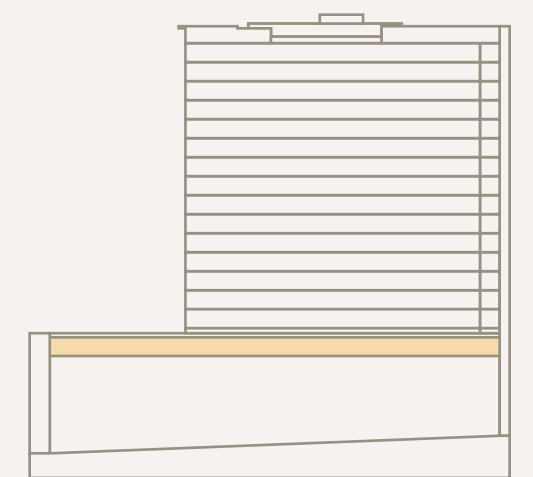
A spacious three-bedroom unit with a large terrace, perfect for families who value outdoor living. The terrace offers a unique space for relaxation, while the interior features a closed kitchen, maid's room, and generous living areas.

TYPICAL SIZES:

| | |
|---------------|------------|
| Unit Area: | 1749 SQFT. |
| Balcony Area: | 174 SQFT. |
| Terrace Area: | 738 SQFT. |
| Total Area: | 2661 SQFT. |



1 FLOOR



1ST FLOOR

Sizes may vary from floor to floor. Please note that the information that we distribute is produced with great care and believed to be correct at the time of production to the best of our knowledge. Pictures, layouts and other details displayed are given as a general guide and may change from time to time in accordance with the final designs of the development and appropriate planning permissions. We endeavour to ensure that the details we provide are accurate and well researched at all times, however we cannot ultimately warrant the accuracy of that information and cannot be held liable for any reliance you may make of or put on it except as specifically agreed with us in any further agreement we may make with you in writing.

All FFE & loose furniture including TV cabinet are indicative only. Units will be handed over in semi-furnished conditions with built-in wardrobes & kitchen cabinets with built-in kitchen appliances only.