

# MARINA PLACE

RASHID YACHTS & MARINA

EMAAR



A woman with her hair pulled back, wearing a white, short-sleeved, backless dress, stands on a beach. She is looking out at the ocean. The waves are crashing behind her, and the white foam of the waves is blowing back, partially obscuring her. The sky is a clear, bright blue with some light clouds. The overall mood is serene and luxurious.

Serene  
Luxury  
By the Water





# Rashid Yachts & Marina



Rashid Yachts & Marina is the new global destination for discerning yacht owners to experience Dubai's vibrant scene in an elegant environment where beauty and luxury converge.

Designed to embody the ultimate modern waterfront lifestyle, it combines luxury residences and a full-service marina with an appealing mix of restaurants and shops, creating a unique definition of living at sea.



Generous Promenades



Signature Hotels

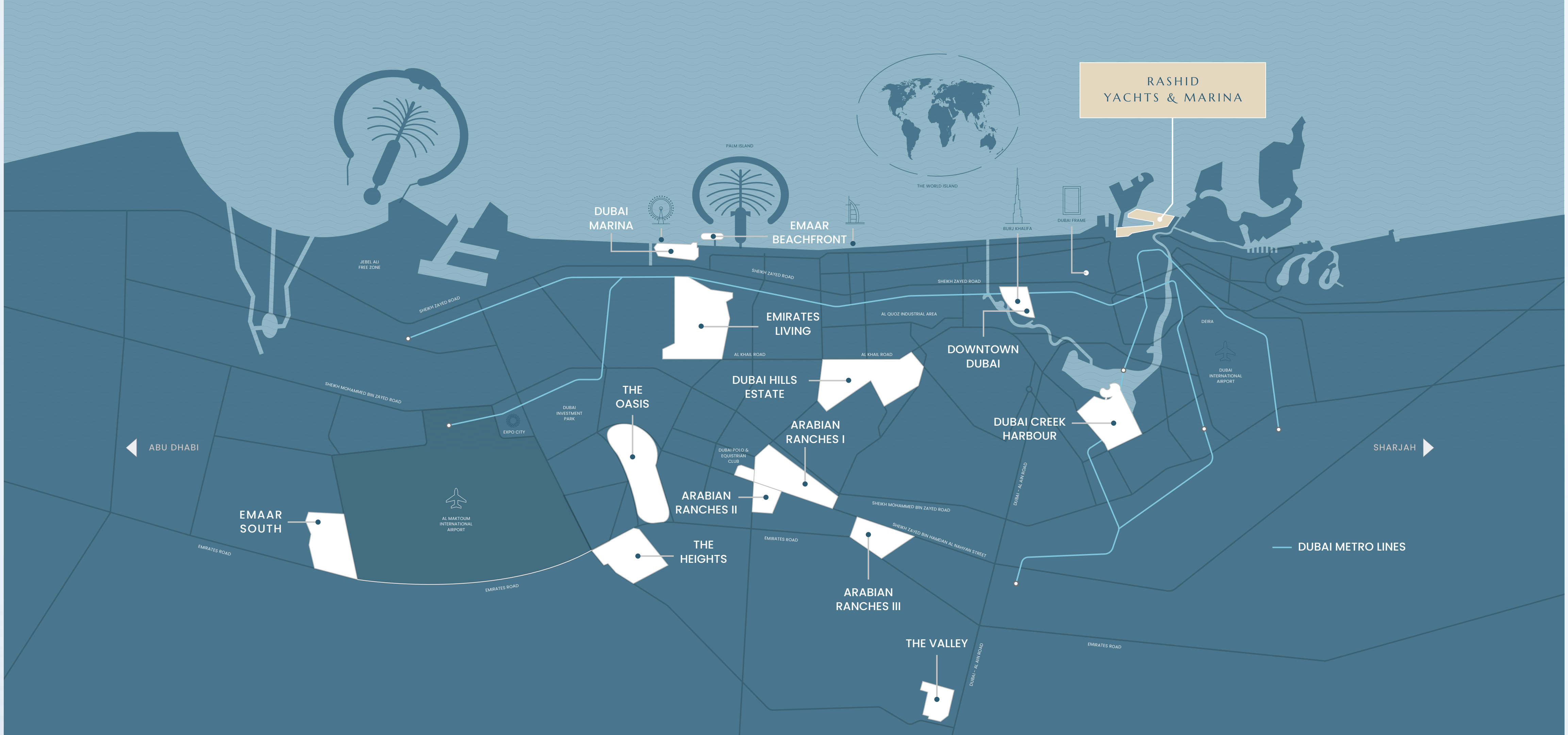


QE2 Hotel



World-Class Superyacht Marina





Perfectly Placed,  
Exceptionally Connected

18 mins  
to Al Shindagha Heritage District

20 mins  
to Dubai International Airport

25 mins  
to Downtown Dubai

30 mins  
to Dubai Marina





Welcome to

# MARINA PLACE

RASHID YACHTS & MARINA



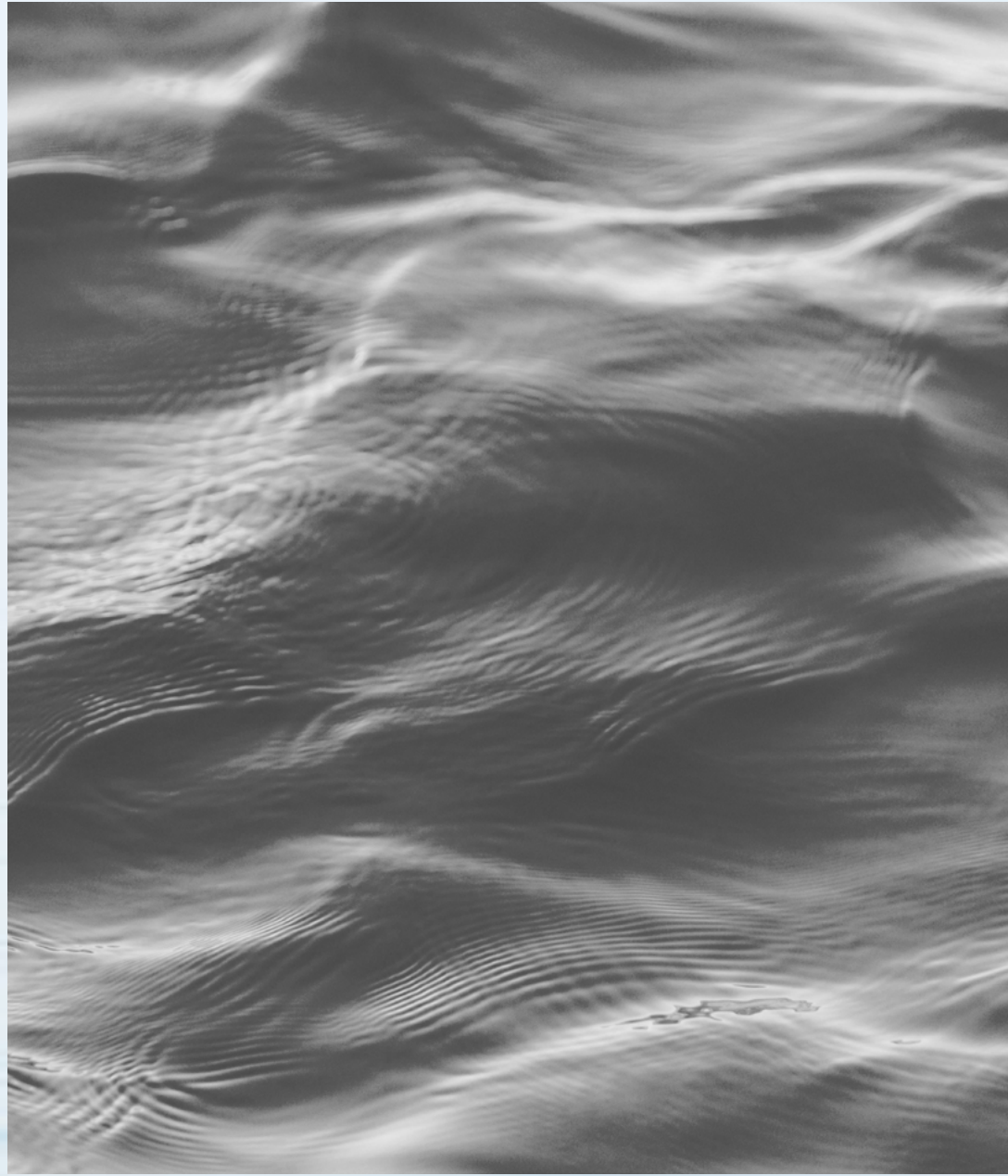
# Experience Life

by the Marina



Marina Place is a modern waterfront residence in the heart of Mina Rashid, designed for those who enjoy the ease of waterside living. Surrounded by landscaped gardens and community spaces, these homes offer a welcoming setting with light-filled interiors and comfortable layouts.

With seamless access to Dubai's top attractions and a peaceful marina atmosphere, Marina Place combines the best of city life with the tranquillity of a waterside retreat.





A woman with long, wavy brown hair, wearing a black dress with a thin orange belt and a blue straw hat, stands on the deck of a white yacht. She is looking out at the vast, shimmering blue ocean under a bright sky. The yacht's white railing and a coiled rope are visible in the foreground.

# A Global Luxury

Yachting Destination



# A Landmark Surrounded

By History & Modernity



Located in Mina Rashid, Marina Place is part of a lively area that reflects Dubai's heritage. The neighbourhood offers both a sense of history and the convenience of modern city life.

With landscaped podiums and spaces for the community to come together, Marina Place is a spot where residents feel connected, both to each other and to the wider city.





Serene Views  
That Enchant & Mesmerize





# A Panorama of Beauty & Serenity

From Marina Place, the scenery is an experience in itself. Whether it's the calm waves of the marina, lush garden landscapes, or Dubai's skyline, each view creates a sense of place that makes every moment memorable. For townhouse residents, there's a charming park right in their backyard, with direct access at their doorstep, creating a perfect space for relaxation and outdoor gatherings.







# Modern Elegance, Thoughtfully Designed



Marina Place's architecture reflects simplicity and sophistication, with clean lines and natural materials that complement its waterfront setting. Rising above a landscaped podium, the two towers bring a sense of space and openness, creating a flow between indoors and outdoors that feels seamless.



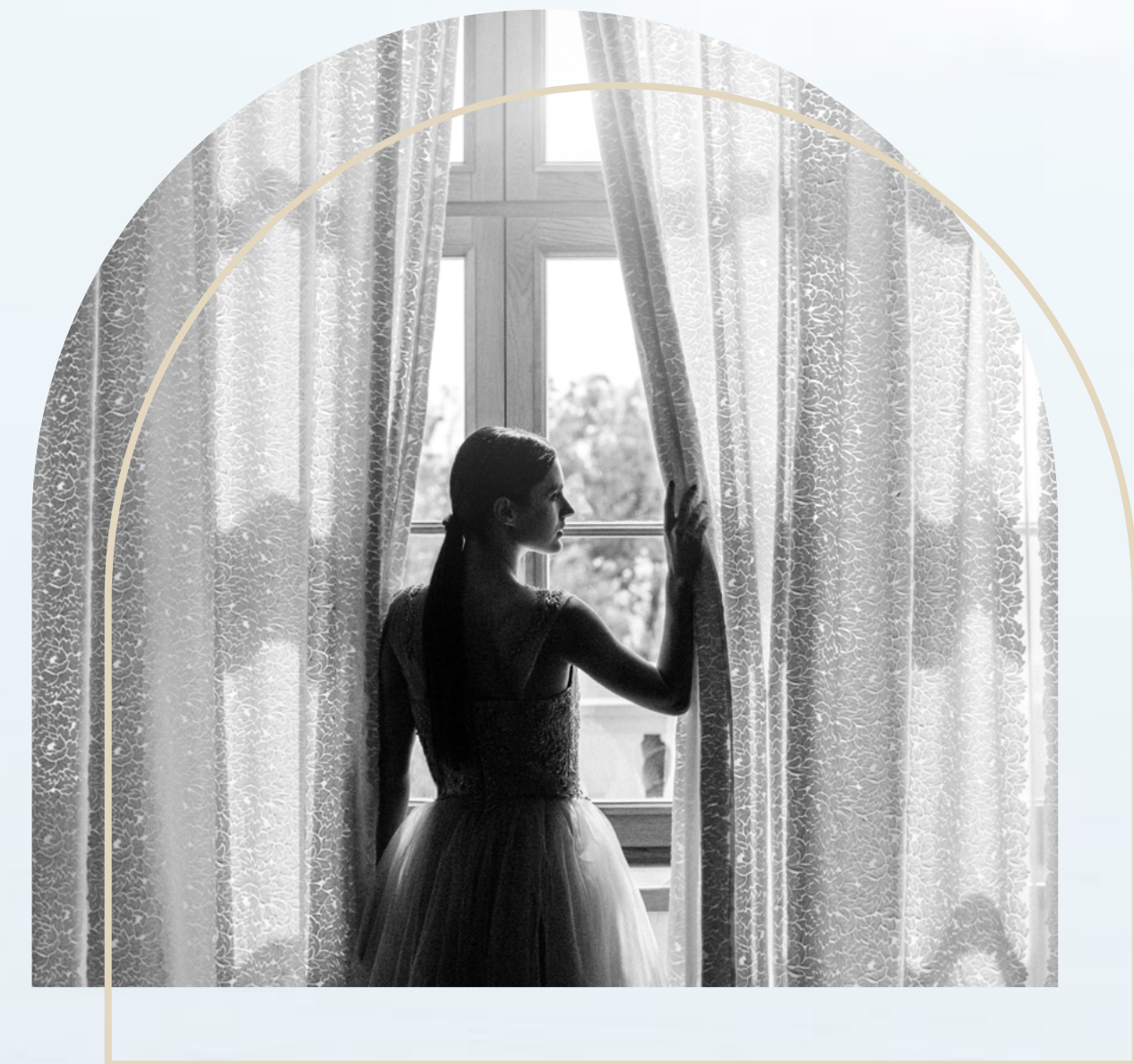






Choose from a range of one, two, and three-bedroom apartments, as well as townhouses, each designed to meet your needs with spacious layouts, high ceilings, and expansive windows. Whether you're looking for a cosy retreat or a family home, these residences offer the perfect blend of comfort and style.

A Home that  
**Fits Your Style**



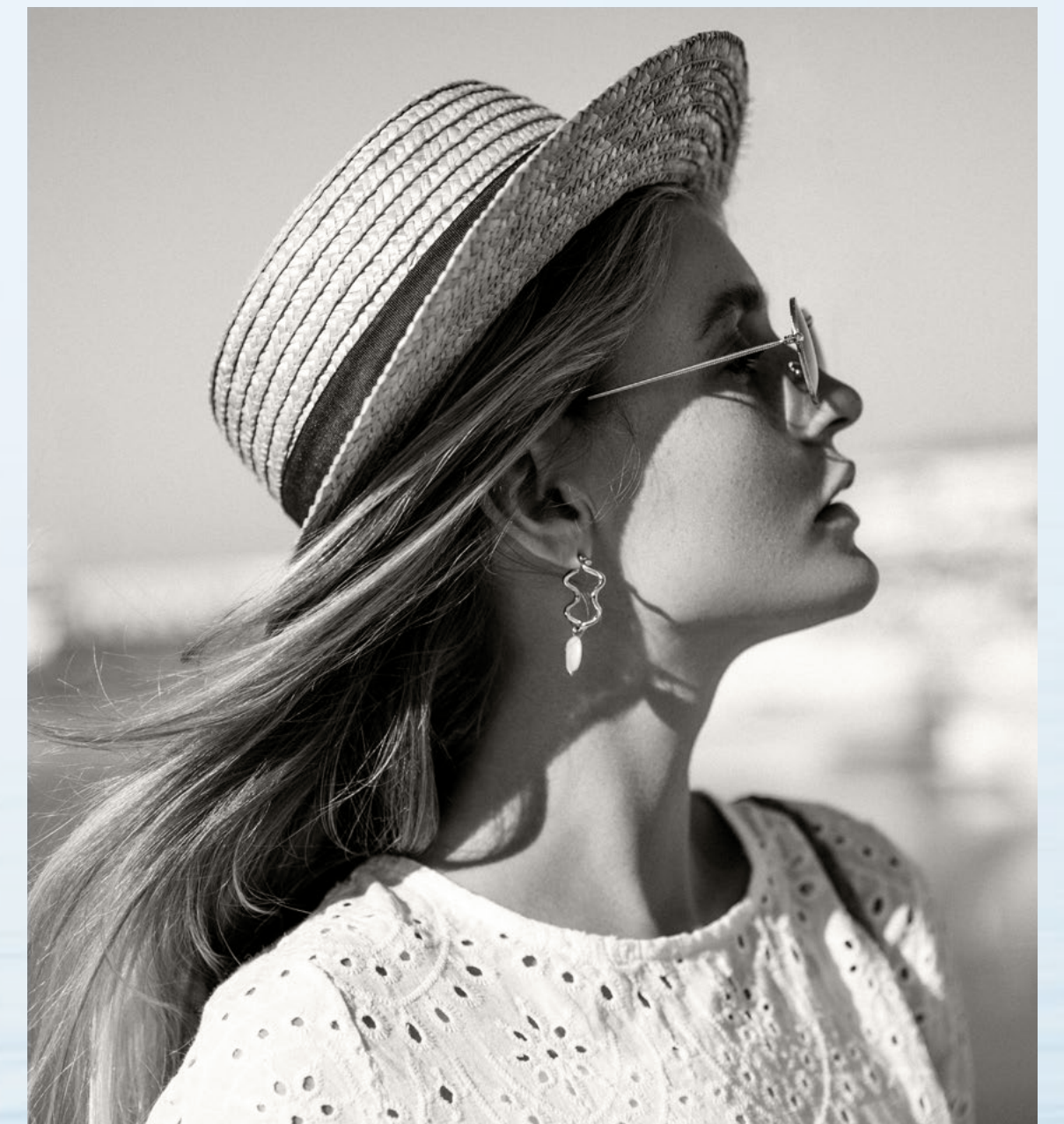


Focused on  
**Comfort & Style**



Step inside Marina Place and discover interiors that are warm, elegant, and inviting. Every finish and detail has been selected to create a comfortable atmosphere, from premium materials to a subtle colour palette.

Whether you're spending a quiet evening at home or entertaining guests, these interiors make every moment feel special.





A modern high-rise apartment building with a rooftop infinity pool overlooking a marina. The building features multiple floors with large glass windows and balconies. The pool is surrounded by lounge chairs, umbrellas, and tropical plants. In the background, a marina with several sailboats is visible under a clear blue sky.

# The Iconic Experience Of Resort-Like Living



# Luxury Embedded

In Every Detail



At Marina Place, you'll find a range of amenities that add to your quality of life, from an infinity pool with stunning marina views to a modern gym, children's play areas, and quiet garden spaces. Everything you need for relaxation, exercise, or socialising is just a few steps away.



Infinity Pool  
Overlooking the Marina



Green Spaces  
with Yoga Decks



Full  
Equipped Gym



Multi-Use  
Community Rooms



Children's  
Play Areas



Upscale Retail  
& Dining Options



A Community with  
**Everything**  
You Need







A Peaceful Retreat  
**Close to  
Everything**



Downtown Dubai



Dubai Creek Harbour



Dubai Mall



Dubai Int'l Airport



Heritage Village



Port Rashid

Located in Mina Rashid, Marina Place gives you the privacy of a waterfront lifestyle without sacrificing the excitement of city living. With iconic Dubai landmarks just minutes away, you're never far from the best the city has to offer.





# Global Lifestyle

## Developer

A leader in the global real estate market, EMAAR has grown over the years to become the largest real estate developer outside of China. You will be investing with one of the best-regarded brands in the world\*.

**71.7Bn AED**

Market Cap - H1 2024

**115,000+**

Residential Units Delivered

**14.4Bn AED**

Revenue – As on 30 June 2024

**12+**

Global Market Presence

**5.3Bn AED**

Net Profit - H1 2024

**42,200+**

Residential Units Currently Under Development

\*As on 30 June 2024

