



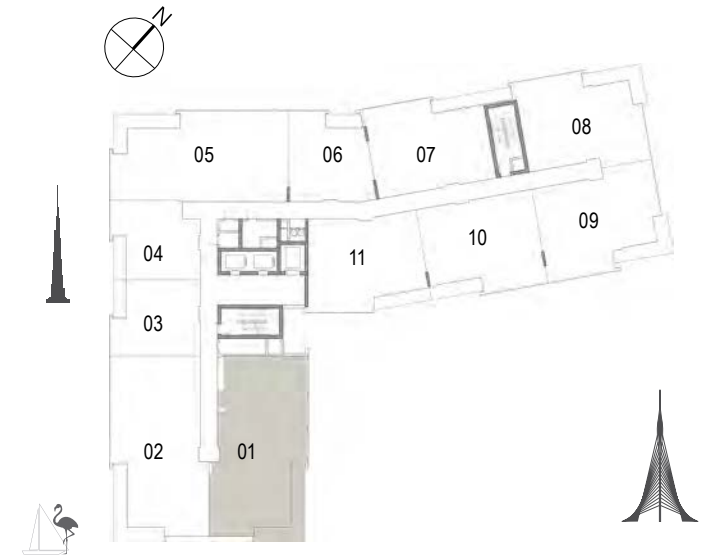
DUBAI CREEK
HARBOUR
THE COVE

FLOOR
PLANS

BUILDING 2

DUBAI CREEK
HARBOUR
THE COVE

Building 02
3 BEDROOM
UNIT 01/ LEVELS 02-06

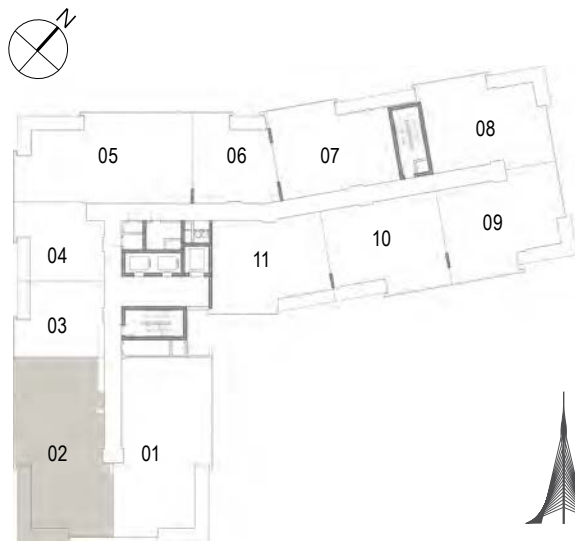


Suite Area	157.80 Sqm. / 1698.55 Sqft.
Balcony Area	18.31 Sqm. / 197.09 Sqft.
Total Area	176.11 Sqm. / 1895.63 Sqft.



1. All dimensions are in imperial and metric, and measured to structural elements and exclude wall finishes and construction tolerances. 2. All materials, dimensions, and drawings are approximate only. 3. Information is subject to change without notice, at developer's absolute discretion. 4. Actual area may vary from the stated area. 5. Drawings not to scale. 6. All images used are for illustrative purposes only and do not represent the actual size, features, specifications, fittings, and furnishings. 7. The developer reserves the right to make revisions/alterations, at its absolute discretion, without any liability whatsoever.

Building 02
3 BEDROOM
UNIT 02/ LEVELS 02-06



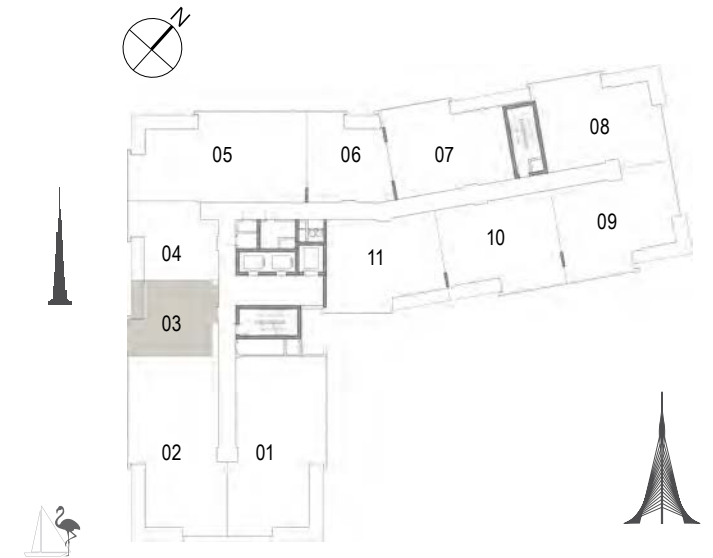
Suite Area	157.80 Sqm. / 1698.55 Sqft.
Balcony Area	18.31 Sqm. / 197.09 Sqft.
Total Area	176.11 Sqm. / 1895.63 Sqft.

DUBAI CREEK
HARBOUR
THE COVE

Building 02
1 BEDROOM
UNIT 03/ LEVELS 01-06

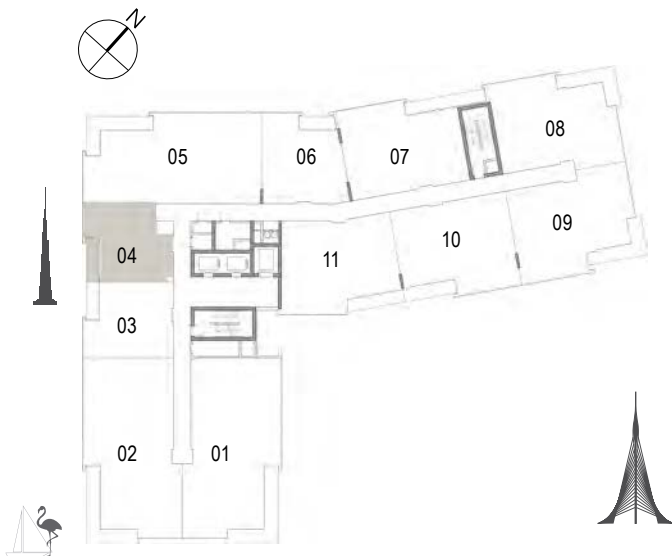


Suite Area	62.16 Sqm. / 669.08 Sqft.
Balcony Area	6.38 Sqm. / 68.67 Sqft.
Total Area	68.54 Sqm. / 737.76 Sqft.



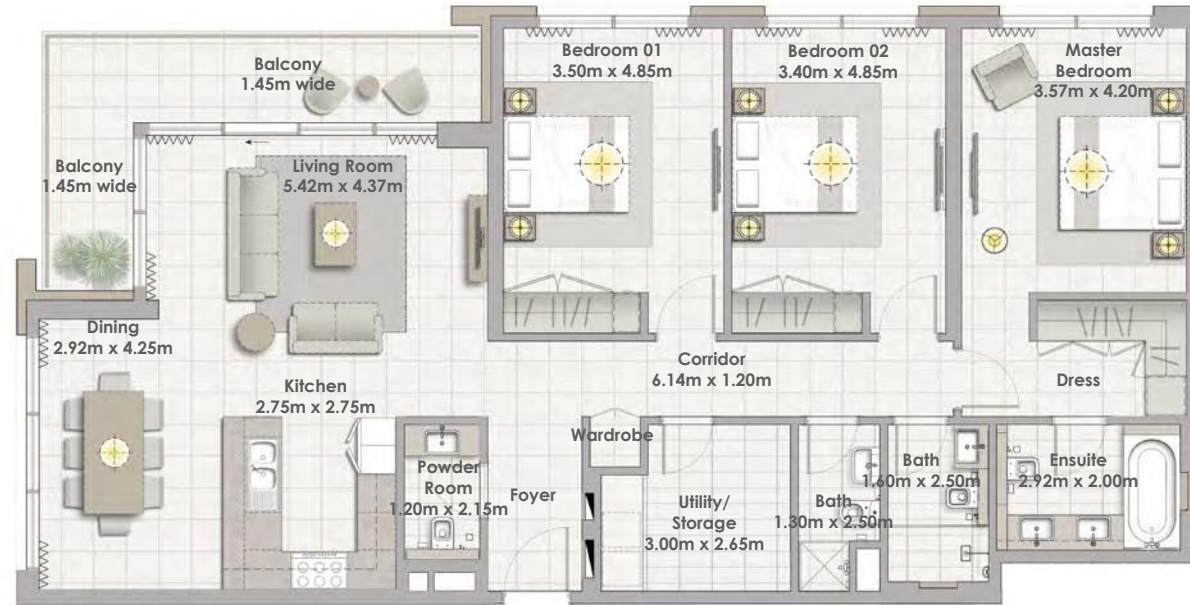
1. All dimensions are in imperial and metric, and measured to structural elements and exclude wall finishes and construction tolerances. 2. All materials, dimensions, and drawings are approximate only. 3. Information is subject to change without notice, at developer's absolute discretion. 4. Actual area may vary from the stated area. 5. Drawings not to scale. 6. All images used are for illustrative purposes only and do not represent the actual size, features, specifications, fittings, and furnishings. 7. The developer reserves the right to make revisions/alterations, at its absolute discretion, without any liability whatsoever.

Building 02
1 BEDROOM
UNIT 04/ LEVELS 01-06

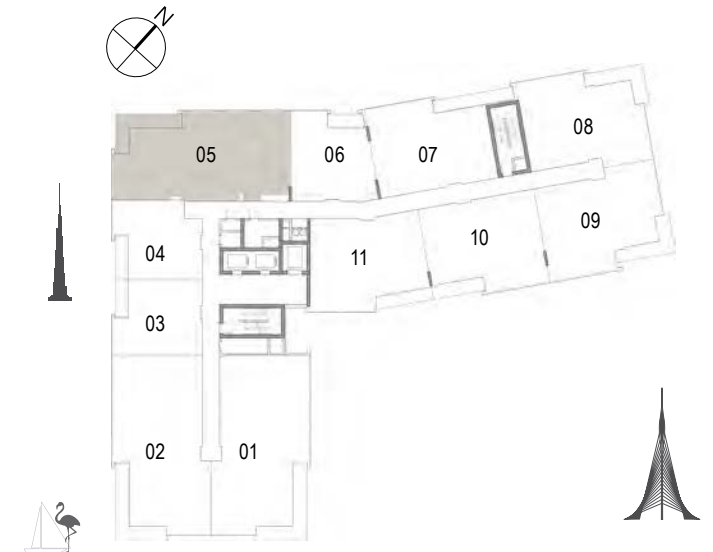


Suite Area	60.44 Sqm. / 650.57 Sqft.
Balcony Area	7.02 Sqm. / 75.56 Sqft.
Total Area	67.46 Sqm. / 726.13 Sqft.

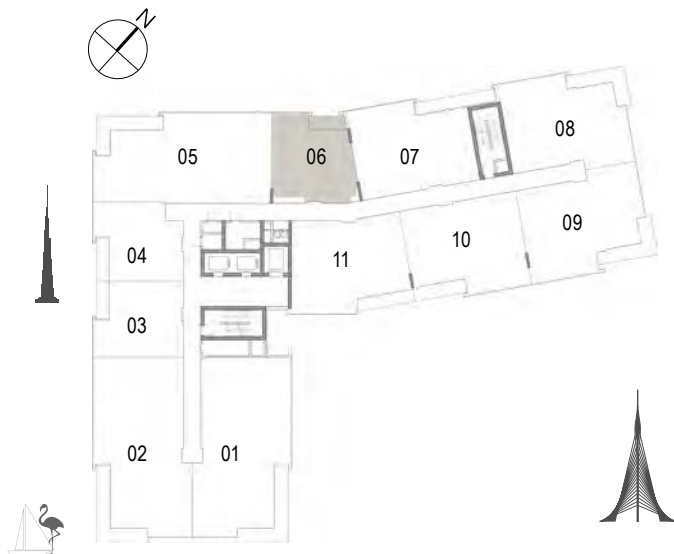
Building 02
3 BEDROOM
UNIT 05/ LEVELS 01-06



Suite Area	148.24 Sqm. / 1595.64 Sqft.
Balcony Area	14.78 Sqm. / 159.09 Sqft.
Total Area	163.02 Sqm. / 1754.73 Sqft.



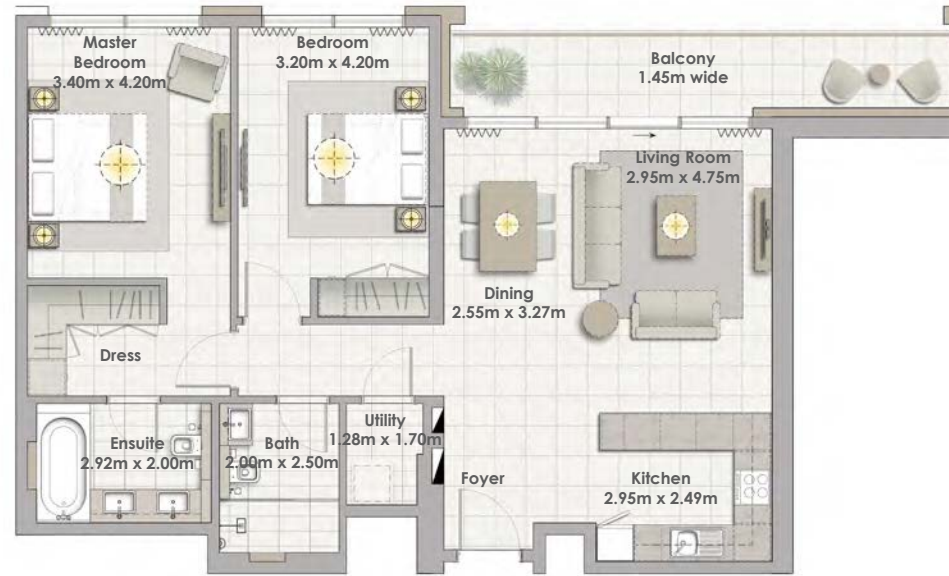
Building 02
1 BEDROOM
UNIT 06/ LEVELS 01-06



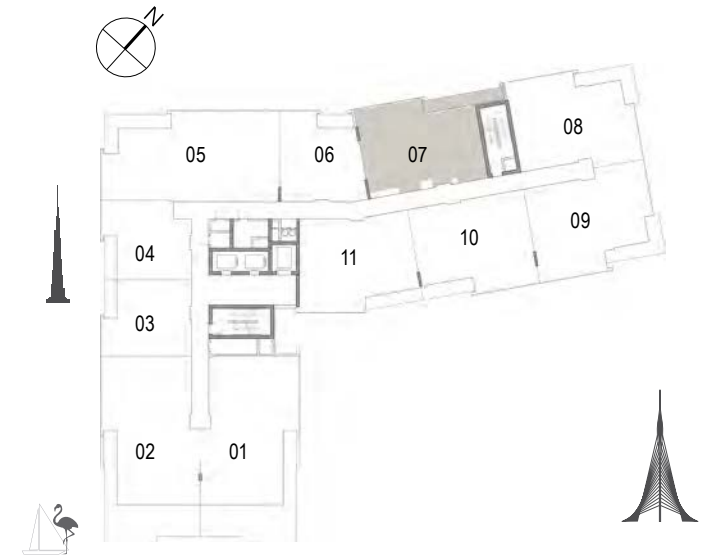
Suite Area	67.15 Sqm. / 722.80 Sqft.
Balcony Area	6.45 Sqm. / 69.43 Sqft.
Total Area	73.60 Sqm. / 792.22 Sqft.

DUBAI CREEK
HARBOUR
THE COVE

Building 02
2 BEDROOM
UNIT 07/ LEVELS 01-06



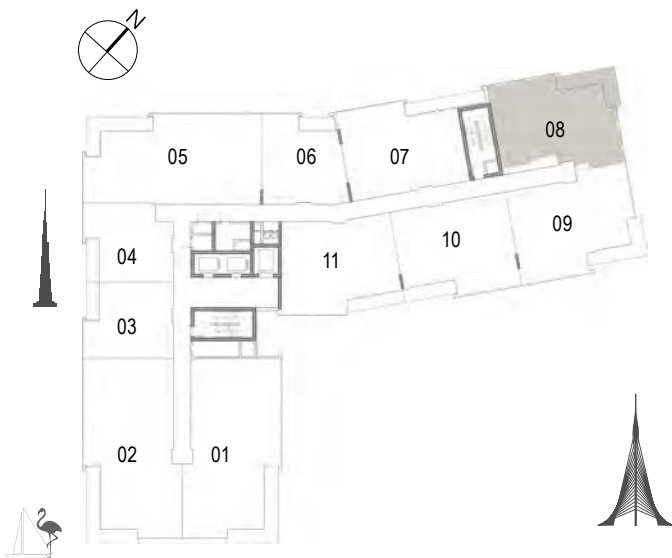
Suite Area	102.58 Sqm. / 1104.16 Sqft.
Balcony Area	13.60 Sqm. / 146.39 Sqft.
Total Area	116.18 Sqm. / 1250.55 Sqft.



1. All dimensions are in imperial and metric, and measured to structural elements and exclude wall finishes and construction tolerances. 2. All materials, dimensions, and drawings are approximate only. 3. Information is subject to change without notice, at developer's absolute discretion. 4. Actual area may vary from the stated area. 5. Drawings not to scale. 6. All images used are for illustrative purposes only and do not represent the actual size, features, specifications, fittings, and furnishings. 7. The developer reserves the right to make revisions/alterations, at its absolute discretion, without any liability whatsoever.

DUBAI CREEK
HARBOUR
THE COVE

Building 02
2 BEDROOM
UNIT 08/ LEVELS 01-06



Suite Area	103.43 Sqm. / 1113.31 Sqft.
Balcony Area	13.61 Sqm. / 146.50 Sqft.
Total Area	117.04 Sqm. / 1259.81 Sqft.

1. All dimensions are in imperial and metric, and measured to structural elements and exclude wall finishes and construction tolerances. 2. All materials, dimensions, and drawings are approximate only. 3. Information is subject to change without notice, at developer's absolute discretion. 4. Actual area may vary from the stated area. 5. Drawings not to scale. 6. All images used are for illustrative purposes only and do not represent the actual size, features, specifications, fittings, and furnishings. 7. The developer reserves the right to make revisions/alterations, at its absolute discretion, without any liability whatsoever.



DUBAI CREEK
HARBOUR
THE COVE

Building 02
2 BEDROOM
UNIT 09/ LEVELS 01-06

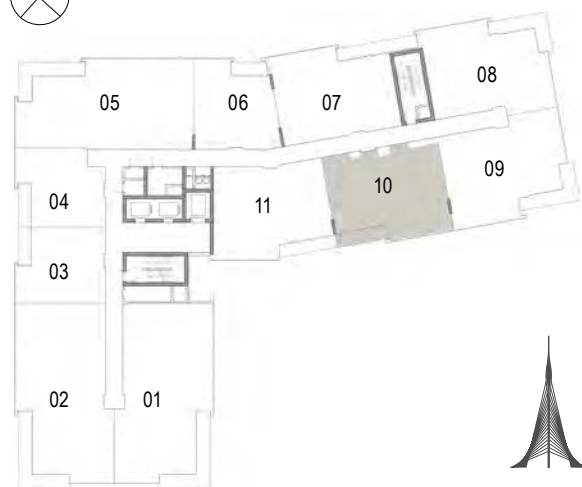


Suite Area	108.25 Sqm. / 1165.19 Sqft.
Balcony Area	13.62 Sqm. / 146.60 Sqft.
Total Area	121.87 Sqm. / 1311.80 Sqft.



1. All dimensions are in imperial and metric, and measured to structural elements and exclude wall finishes and construction tolerances. 2. All materials, dimensions, and drawings are approximate only. 3. Information is subject to change without notice, at developer's absolute discretion. 4. Actual area may vary from the stated area. 5. Drawings not to scale. 6. All images used are for illustrative purposes only and do not represent the actual size, features, specifications, fittings, and furnishings. 7. The developer reserves the right to make revisions/alterations, at its absolute discretion, without any liability whatsoever.

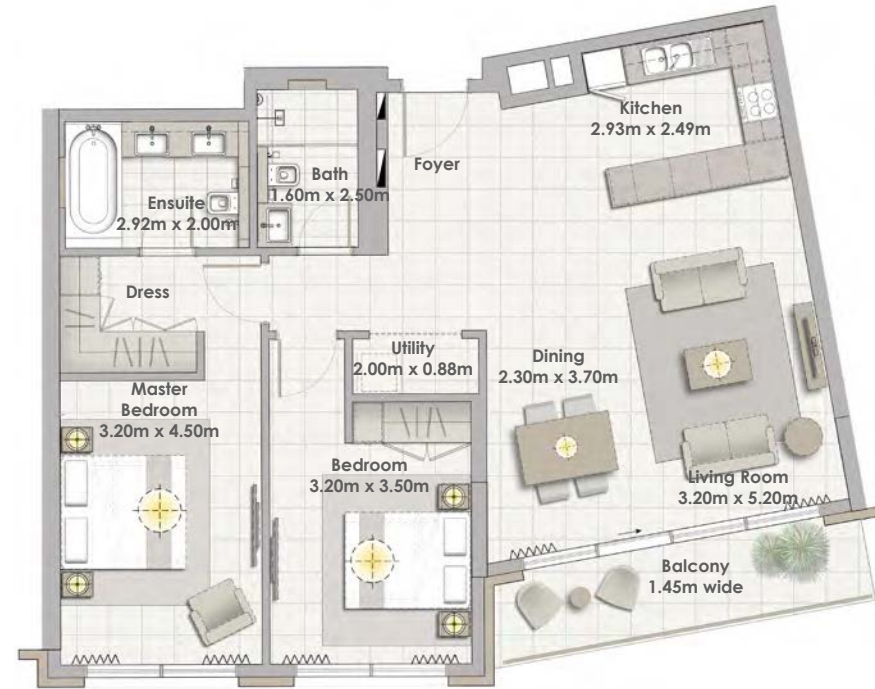
Building 02
2 BEDROOM
UNIT 10/ LEVELS 01-06



Suite Area	103.70 Sqm. / 1116.22 Sqft.
Balcony Area	8.52 Sqm. / 91.71 Sqft.
Total Area	112.22 Sqm. / 1207.93 Sqft.

DUBAI CREEK
HARBOUR
THE COVE

Building 02
2 BEDROOM
UNIT 11/ LEVELS 01-06



Suite Area	103.75 Sqm. / 1116.76 Sqft.
Balcony Area	9.25 Sqm. / 99.57 Sqft.
Total Area	113.00 Sqm. / 1216.32 Sqft.

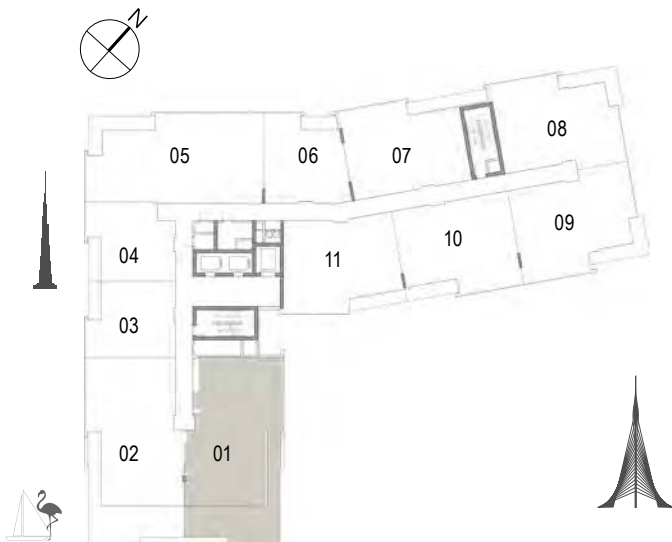


1. All dimensions are in imperial and metric, and measured to structural elements and exclude wall finishes and construction tolerances. 2. All materials, dimensions, and drawings are approximate only. 3. Information is subject to change without notice, at developer's absolute discretion. 4. Actual area may vary from the stated area. 5. Drawings not to scale. 6. All images used are for illustrative purposes only and do not represent the actual size, features, specifications, fittings, and furnishings. 7. The developer reserves the right to make revisions/alterations, at its absolute discretion, without any liability whatsoever.

Building 02
2 BEDROOM
UNIT 01/ LEVEL 07

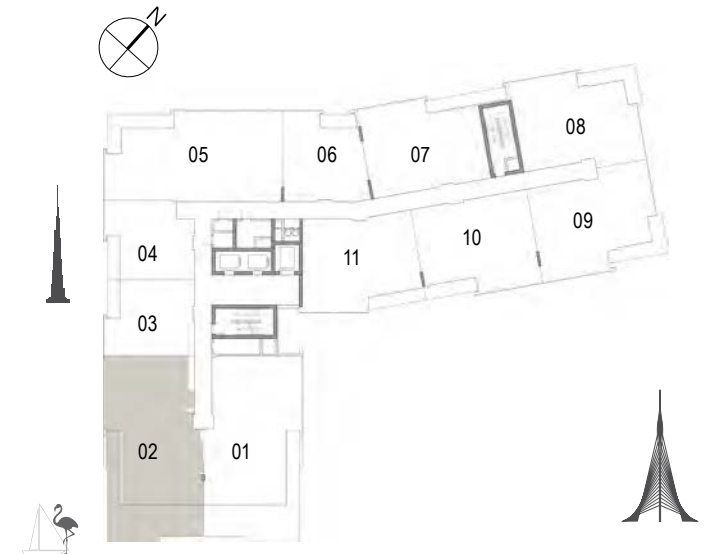


Suite Area	130.17 Sqm. / 1401.14 Sqft.
Terrace Area	50.03 Sqm. / 538.52 Sqft.
Total Area	180.20 Sqm. / 1939.66 Sqft.



DUBAI CREEK
HARBOUR
THE COVE

Building 02
2 BEDROOM
UNIT 02/ LEVEL 07

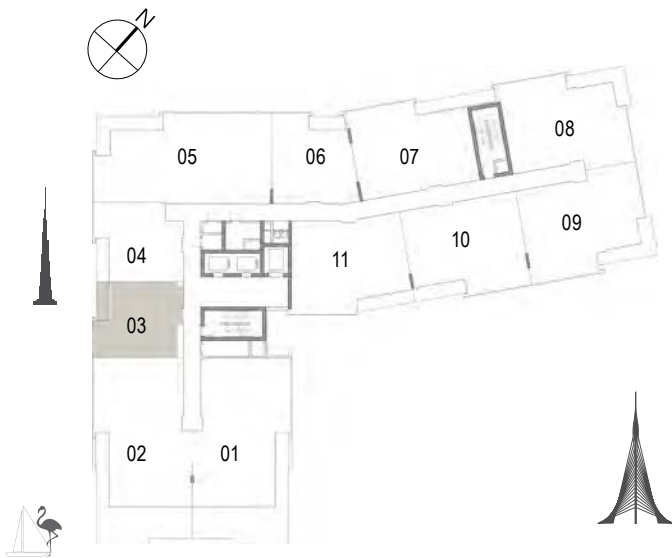
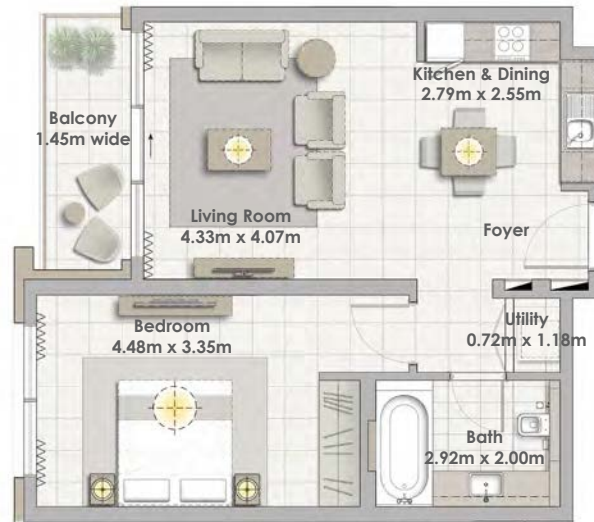


Suite Area	130.27 Sqm. / 1402.21 Sqft.
Terrace Area	50.03 Sqm. / 538.52 Sqft.
Total Area	180.30 Sqm. / 1940.73 Sqft.



1. All dimensions are in imperial and metric, and measured to structural elements and exclude wall finishes and construction tolerances. 2. All materials, dimensions, and drawings are approximate only. 3. Information is subject to change without notice, at developer's absolute discretion. 4. Actual area may vary from the stated area. 5. Drawings not to scale. 6. All images used are for illustrative purposes only and do not represent the actual size, features, specifications, fittings, and furnishings. 7. The developer reserves the right to make revisions/alterations, at its absolute discretion, without any liability whatsoever.

Building 02
1 BEDROOM
UNIT 03/ LEVEL 07



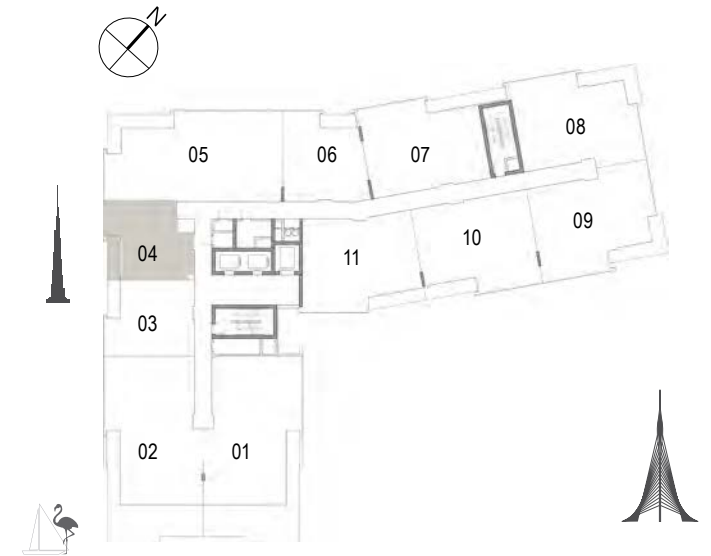
Suite Area	62.16 Sqm. / 669.08 Sqft.
Balcony Area	6.38 Sqm. / 68.67 Sqft.
Total Area	68.54 Sqm. / 737.76 Sqft.

DUBAI CREEK
HARBOUR
THE COVE

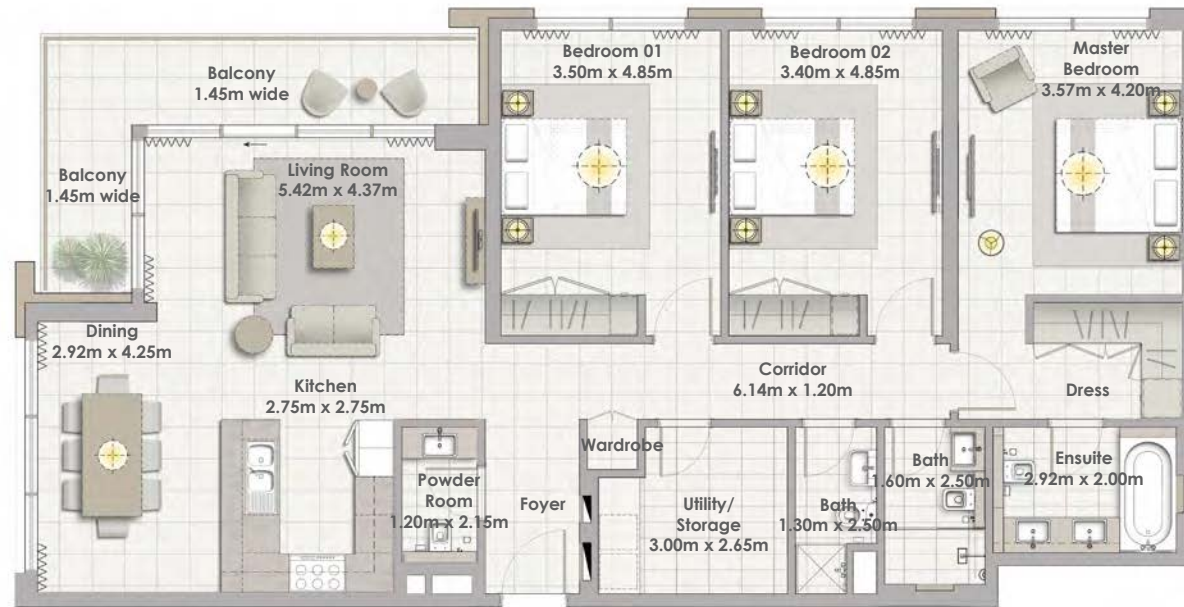
Building 02
1 BEDROOM
UNIT 04/ LEVEL 07



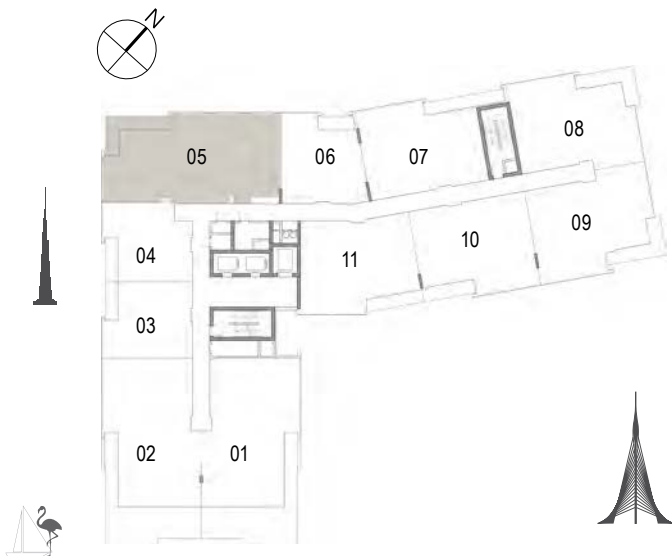
Suite Area	60.44 Sqm. / 650.57 Sqft.
Balcony Area	7.02 Sqm. / 75.56 Sqft.
Total Area	67.46 Sqm. / 726.13 Sqft.



1. All dimensions are in imperial and metric, and measured to structural elements and exclude wall finishes and construction tolerances. 2. All materials, dimensions, and drawings are approximate only. 3. Information is subject to change without notice, at developer's absolute discretion. 4. Actual area may vary from the stated area. 5. Drawings not to scale. 6. All images used are for illustrative purposes only and do not represent the actual size, features, specifications, fittings, and furnishings. 7. The developer reserves the right to make revisions/alterations, at its absolute discretion, without any liability whatsoever.



Building 02
3 BEDROOM
UNIT 05/ LEVEL 07



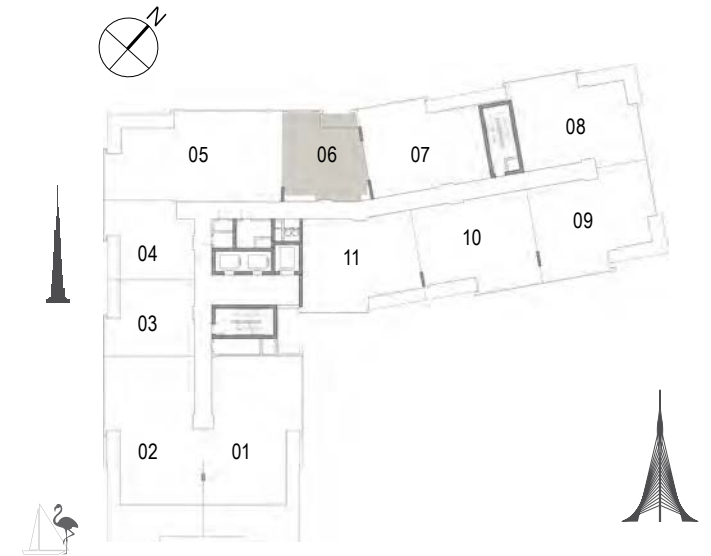
Suite Area	148.24 Sqm. / 1595.64 Sqft.
Balcony Area	14.78 Sqm. / 159.09 Sqft.
Total Area	163.02 Sqm. / 1754.73 Sqft.

DUBAI CREEK
HARBOUR
THE COVE

Building 02
1 BEDROOM
UNIT 06/ LEVEL 07

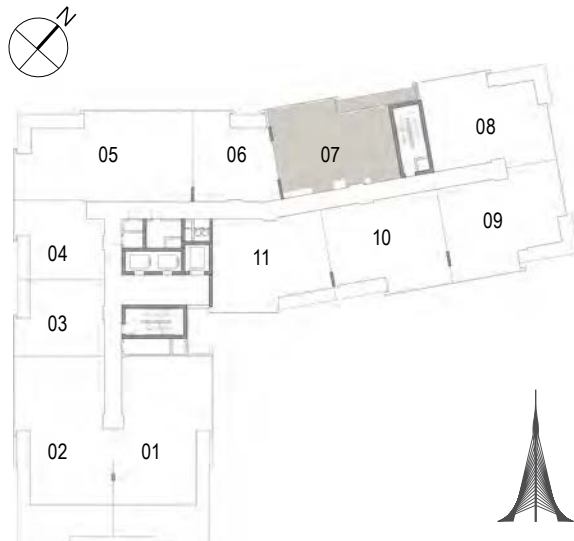


Suite Area	67.15 Sqm. / 722.80 Sqft.
Balcony Area	6.45 Sqm. / 69.43 Sqft.
Total Area	73.60 Sqm. / 792.22 Sqft.



1. All dimensions are in imperial and metric, and measured to structural elements and exclude wall finishes and construction tolerances. 2. All materials, dimensions, and drawings are approximate only. 3. Information is subject to change without notice, at developer's absolute discretion. 4. Actual area may vary from the stated area. 5. Drawings not to scale. 6. All images used are for illustrative purposes only and do not represent the actual size, features, specifications, fittings, and furnishings. 7. The developer reserves the right to make revisions/alterations, at its absolute discretion, without any liability whatsoever.

Building 02
2 BEDROOM
UNIT 07/ LEVEL 07



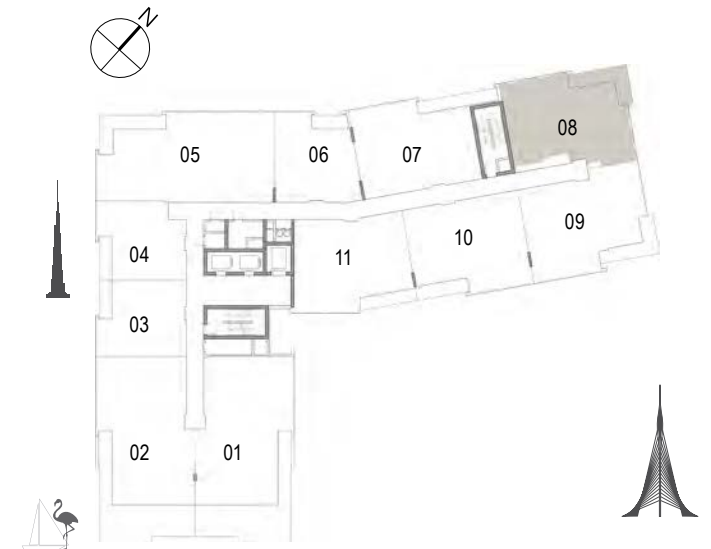
Suite Area	102.58 Sqm. / 1104.16 Sqft.
Balcony Area	13.60 Sqm. / 146.39 Sqft.
Total Area	116.18 Sqm. / 1250.55 Sqft.

DUBAI CREEK
HARBOUR
THE COVE

Building 02
2 BEDROOM
UNIT 08/ LEVEL 07

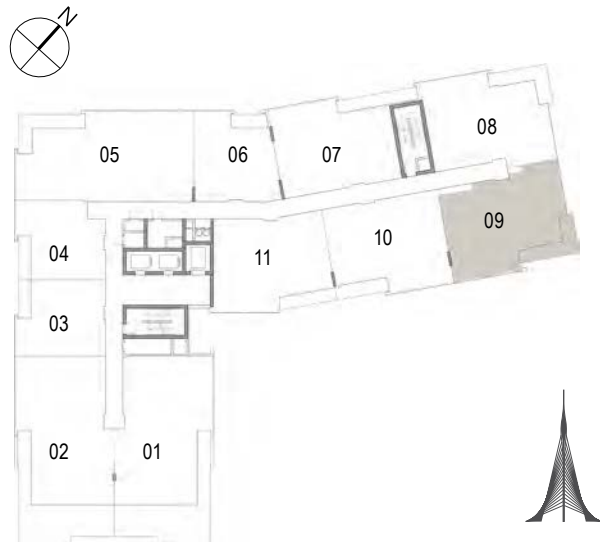


Suite Area	103.43 Sqm. / 1113.31 Sqft.
Balcony Area	13.61 Sqm. / 146.50 Sqft.
Total Area	117.04 Sqm. / 1259.81 Sqft.



1. All dimensions are in imperial and metric, and measured to structural elements and exclude wall finishes and construction tolerances. 2. All materials, dimensions, and drawings are approximate only. 3. Information is subject to change without notice, at developer's absolute discretion. 4. Actual area may vary from the stated area. 5. Drawings not to scale. 6. All images used are for illustrative purposes only and do not represent the actual size, features, specifications, fittings, and furnishings. 7. The developer reserves the right to make revisions/alterations, at its absolute discretion, without any liability whatsoever.

Building 02
2 BEDROOM
UNIT 09/ LEVEL 07



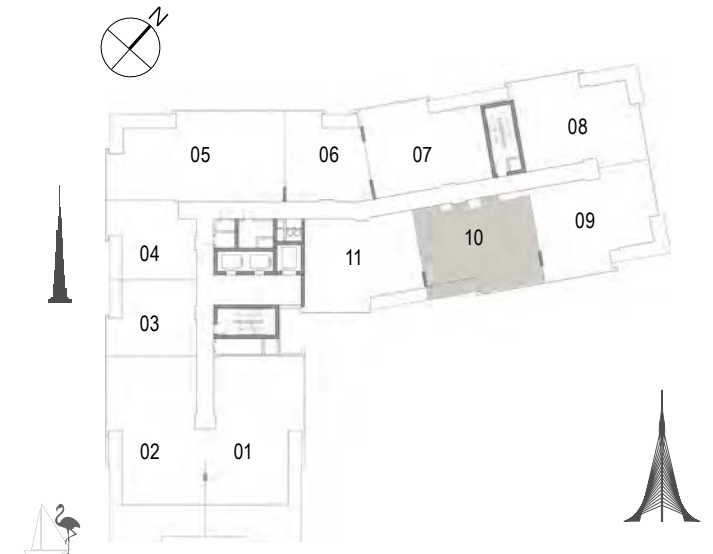
Suite Area	108.25 Sqm. / 1165.19 Sqft.
Balcony Area	13.62 Sqm. / 146.60 Sqft.
Total Area	121.87 Sqm. / 1311.80 Sqft.

DUBAI CREEK
HARBOUR
THE COVE

Building 02
2 BEDROOM
UNIT 10/ LEVEL 07

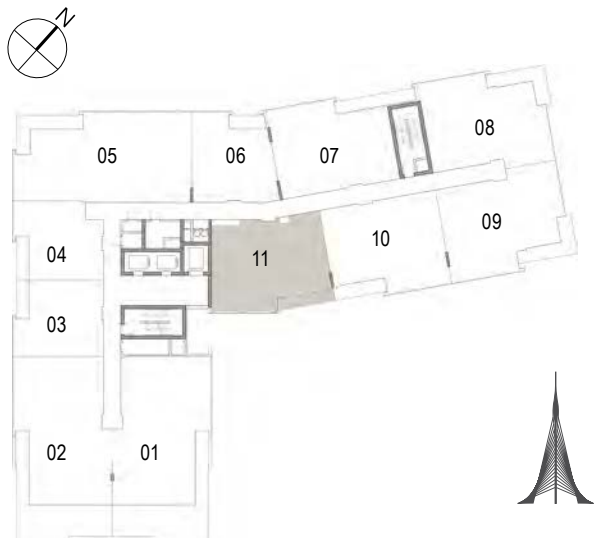
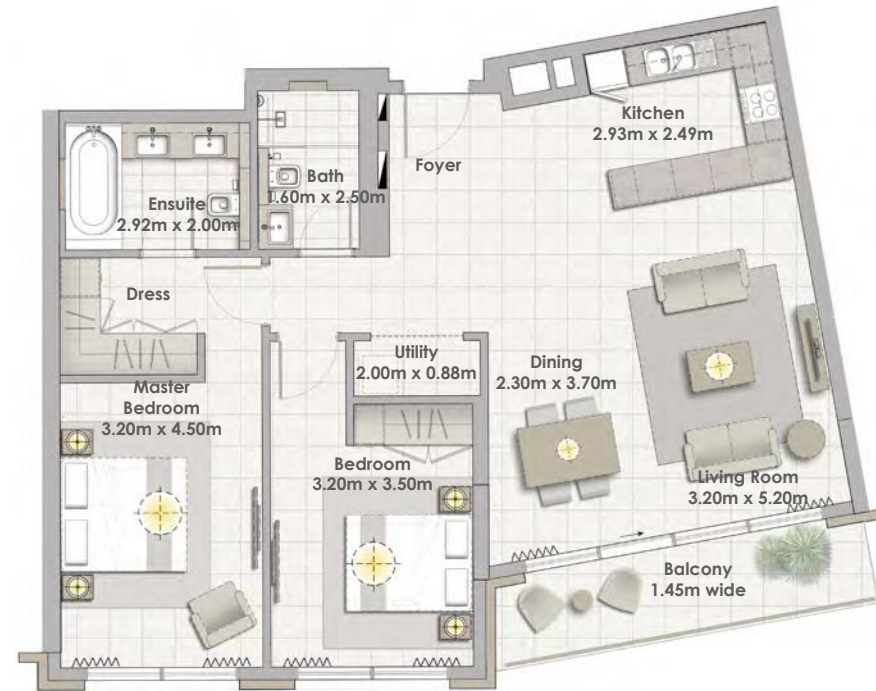


Suite Area	103.70 Sqm. / 1116.22 Sqft.
Balcony Area	8.52 Sqm. / 91.71 Sqft.
Total Area	112.22 Sqm. / 1207.93 Sqft.



1. All dimensions are in imperial and metric, and measured to structural elements and exclude wall finishes and construction tolerances. 2. All materials, dimensions, and drawings are approximate only. 3. Information is subject to change without notice, at developer's absolute discretion. 4. Actual area may vary from the stated area. 5. Drawings not to scale. 6. All images used are for illustrative purposes only and do not represent the actual size, features, specifications, fittings, and furnishings. 7. The developer reserves the right to make revisions/alterations, at its absolute discretion, without any liability whatsoever.

Building 02
2 BEDROOM
UNIT 11/ LEVEL 07



Suite Area	103.75 Sqm. / 1116.76 Sqft.
Balcony Area	9.25 Sqm. / 99.57 Sqft.
Total Area	113.00 Sqm. / 1216.32 Sqft.

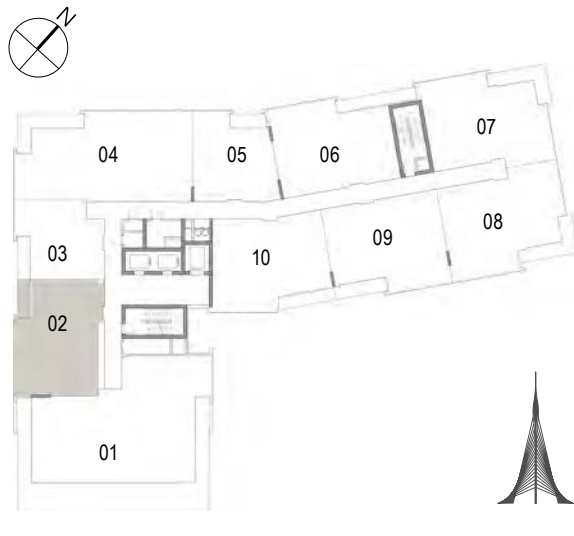
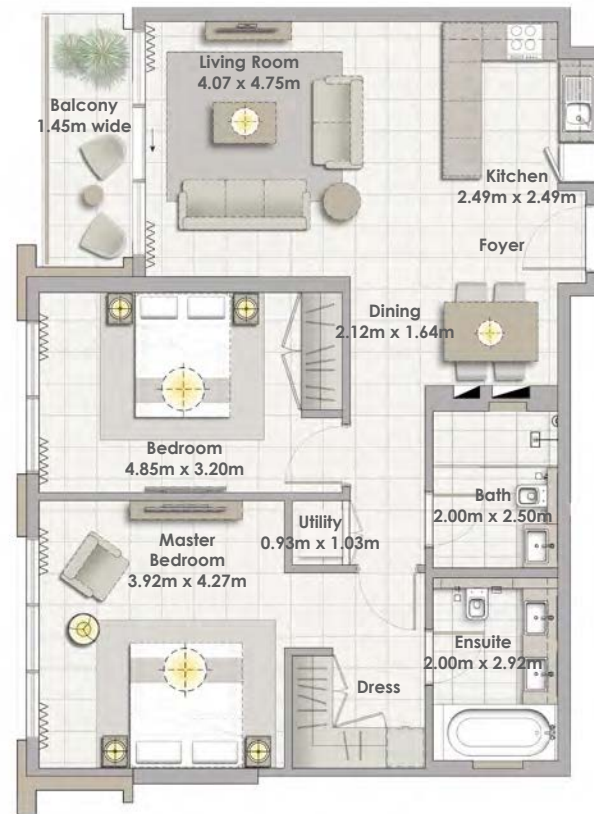
Building 02
3 BEDROOM
UNIT 01/ LEVEL 08



Suite Area	187.23 Sqm. / 2015.33 Sqft.
Terrace Area	84.91 Sqm. / 913.96 Sqft.
Total Area	272.14 Sqm. / 2929.29 Sqft.



Building 02
2 BEDROOM
UNIT 02/ LEVEL 08



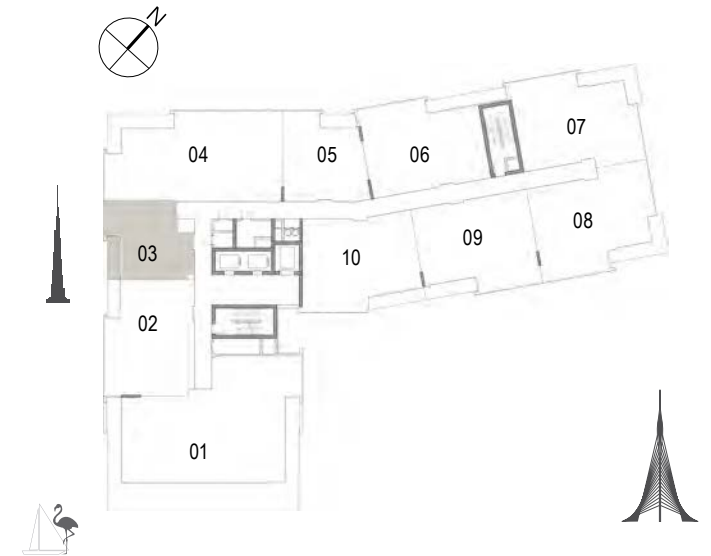
Suite Area	98.30 Sqm. / 1058.09 Sqft.
Balcony Area	6.38 Sqm. / 68.67 Sqft.
Total Area	104.68 Sqm. / 1126.77 Sqft.

DUBAI CREEK
HARBOUR
THE COVE

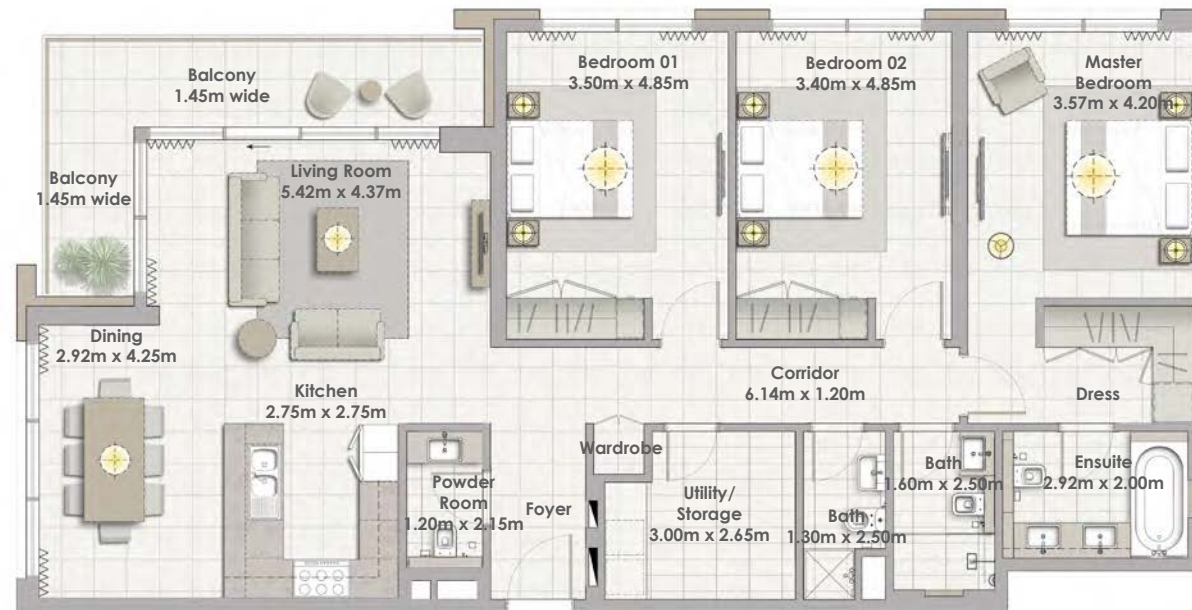
Building 02
1 BEDROOM
UNIT 03/ LEVEL 08



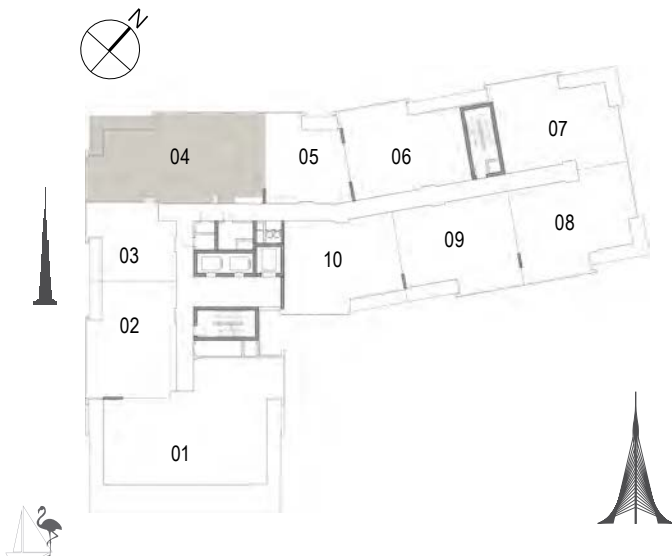
Suite Area	60.44 Sqm. / 650.57 Sqft.
Balcony Area	7.02 Sqm. / 75.56 Sqft.
Total Area	67.46 Sqm. / 726.13 Sqft.



1. All dimensions are in imperial and metric, and measured to structural elements and exclude wall finishes and construction tolerances. 2. All materials, dimensions, and drawings are approximate only. 3. Information is subject to change without notice, at developer's absolute discretion. 4. Actual area may vary from the stated area. 5. Drawings not to scale. 6. All images used are for illustrative purposes only and do not represent the actual size, features, specifications, fittings, and furnishings. 7. The developer reserves the right to make revisions/alterations, at its absolute discretion, without any liability whatsoever.



Building 02
3 BEDROOM
UNIT 04/ LEVEL 08



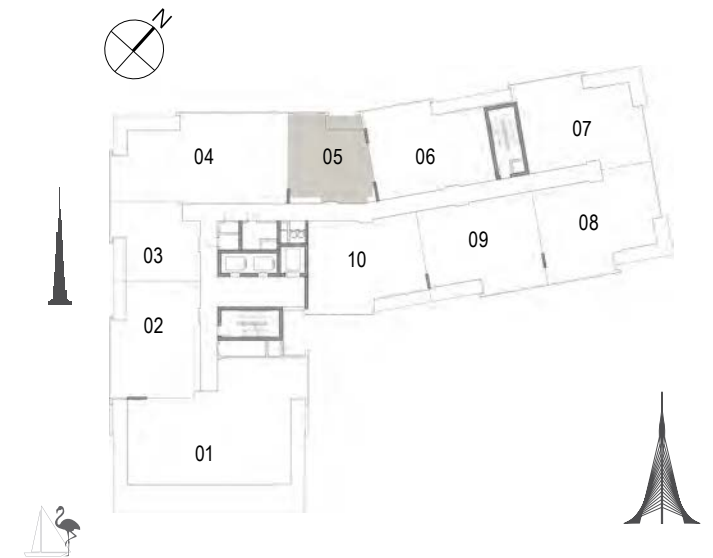
Suite Area	148.24 Sqm. / 1595.64 Sqft.
Balcony Area	14.78 Sqm. / 159.09 Sqft.
Total Area	163.02 Sqm. / 1754.73 Sqft.

DUBAI CREEK
HARBOUR
THE COVE

Building 02
1 BEDROOM
UNIT 05/ LEVEL 08

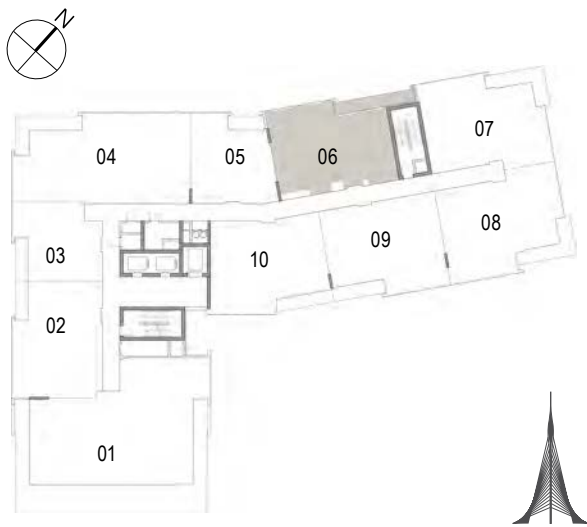


Suite Area	67.15 Sqm. / 722.80 Sqft.
Balcony Area	6.45 Sqm. / 69.43 Sqft.
Total Area	73.60 Sqm. / 792.22 Sqft.



1. All dimensions are in imperial and metric, and measured to structural elements and exclude wall finishes and construction tolerances. 2. All materials, dimensions, and drawings are approximate only. 3. Information is subject to change without notice, at developer's absolute discretion. 4. Actual area may vary from the stated area. 5. Drawings not to scale. 6. All images used are for illustrative purposes only and do not represent the actual size, features, specifications, fittings, and furnishings. 7. The developer reserves the right to make revisions/alterations, at its absolute discretion, without any liability whatsoever.

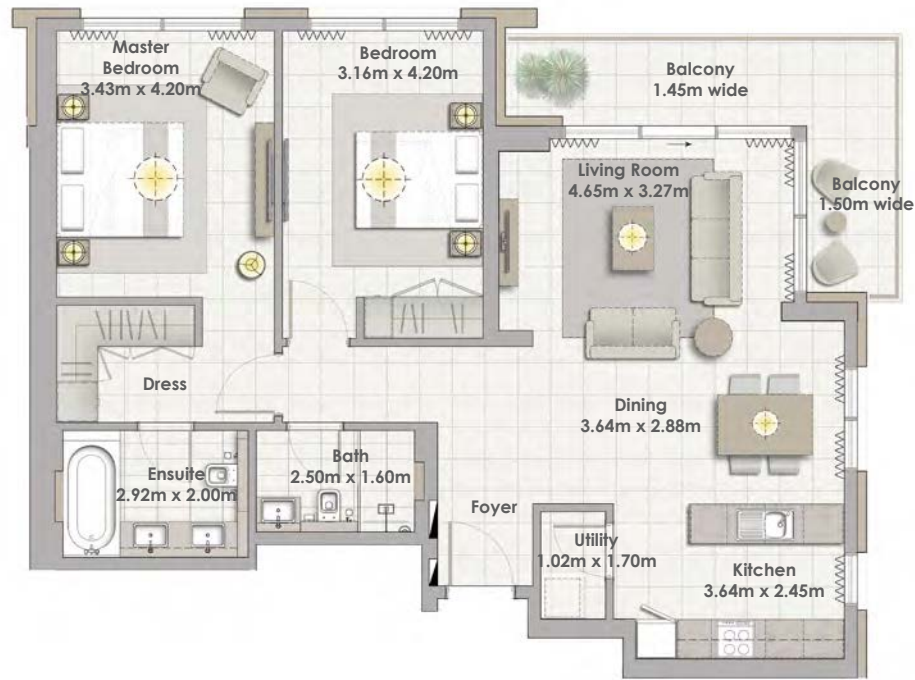
Building 02
2 BEDROOM
UNIT 06/ LEVEL 08



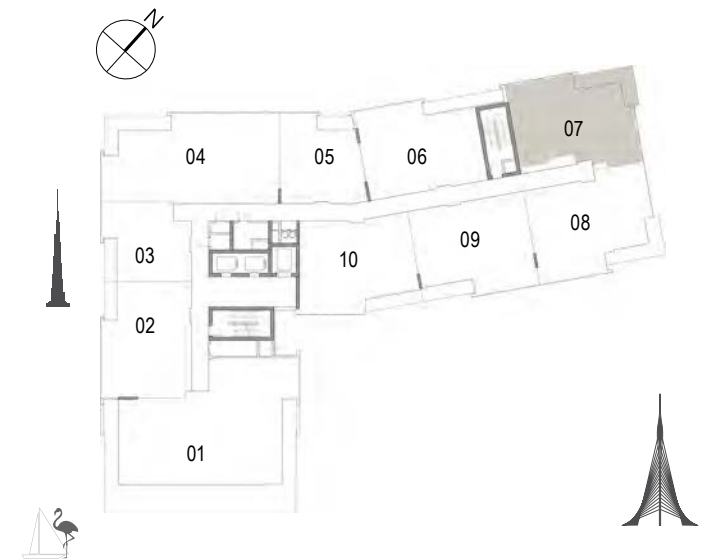
Suite Area	102.58 Sqm. / 1104.16 Sqft.
Balcony Area	13.60 Sqm. / 146.39 Sqft.
Total Area	116.18 Sqm. / 1250.55 Sqft.

DUBAI CREEK
HARBOUR
THE COVE

Building 02
2 BEDROOM
UNIT 07/ LEVEL 08



Suite Area	103.43 Sqm. / 1113.31 Sqft.
Balcony Area	13.61 Sqm. / 146.50 Sqft.
Total Area	117.04 Sqm. / 1259.81 Sqft.



1. All dimensions are in imperial and metric, and measured to structural elements and exclude wall finishes and construction tolerances. 2. All materials, dimensions, and drawings are approximate only. 3. Information is subject to change without notice, at developer's absolute discretion. 4. Actual area may vary from the stated area. 5. Drawings not to scale. 6. All images used are for illustrative purposes only and do not represent the actual size, features, specifications, fittings, and furnishings. 7. The developer reserves the right to make revisions/alterations, at its absolute discretion, without any liability whatsoever.

Building 02
2 BEDROOM
UNIT 08/ LEVEL 08

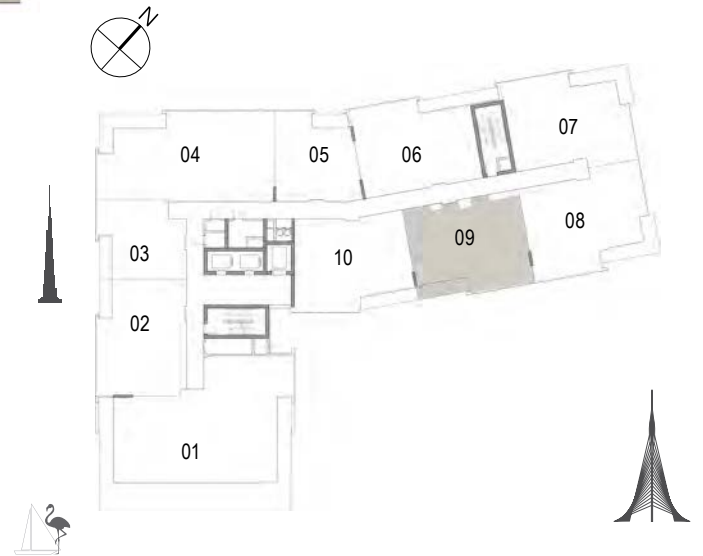


Suite Area	108.25 Sqm. / 1165.19 Sqft.
Balcony Area	13.62 Sqm. / 146.60 Sqft.
Total Area	121.87 Sqm. / 1311.80 Sqft.

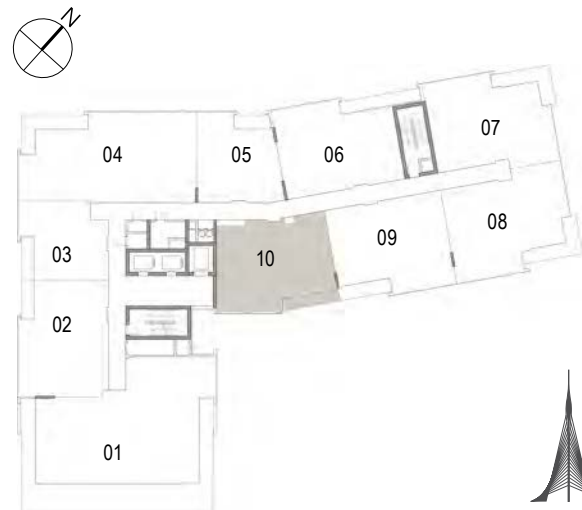
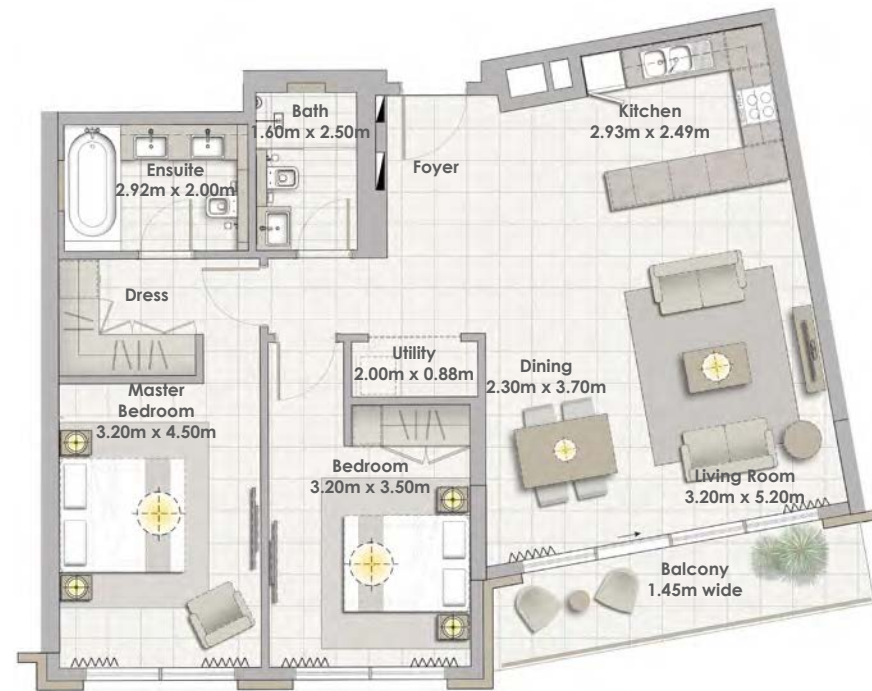
Building 02
2 BEDROOM
UNIT 09/ LEVEL 08



Suite Area	103.70 Sqm. / 1116.22 Sqft.
Balcony Area	8.52 Sqm. / 91.71 Sqft.
Total Area	112.22 Sqm. / 1207.93 Sqft.



Building 02
2 BEDROOM
UNIT 10/ LEVEL 08



Suite Area	103.75 Sqm. / 1116.76 Sqft.
Balcony Area	9.25 Sqm. / 99.57 Sqft.
Total Area	113.00 Sqm. / 1216.32 Sqft.

1. All dimensions are in imperial and metric, and measured to structural elements and exclude wall finishes and construction tolerances. 2. All materials, dimensions, and drawings are approximate only. 3. Information is subject to change without notice, at developer's absolute discretion. 4. Actual area may vary from the stated area. 5. Drawings not to scale. 6. All images used are for illustrative purposes only and do not represent the actual size, features, specifications, fittings, and furnishings. 7. The developer reserves the right to make revisions/alterations, at its absolute discretion, without any liability whatsoever.