



# SUNSET BAY

CAPITON CONSTRUCTION LTD.





SUNSET BAY

CAPITON  
Construction

# PROJECT FEATURES



- 7 Blocks of 2+1 Twin Duplex Villas
- 9 Blocks of 1+1 apartments
- 5 independent 4+1 Villas
- Roof terrace for apartments on 1<sup>st</sup> floor
- Indoor & Outdoor swimming pool
- SPA & Wellness center
- Gym & Sports field
- Restaurant & Bar
- Rental Management
- Diesel Generator



# Facilities



SUNSET BAY



SUNSET BAY



# Location



# A Blocks 5 Detached Villas



4+1 Duplex villa

Areas: 192.7 m<sup>2</sup> + 60.6 m<sup>2</sup> Terrace

Plot Area: 465 ~ 540 m<sup>2</sup>



# Exterior



SUNSET BAY





# Exterior



SUNSET BAY



# Exterior



SUNSET BAY



# Interior



# Floor Plans

Ground Floor



1st Floor



SUNSET BAY



# Payment Plan



| Payment Plan Detail for available apartments |            |               |
|----------------------------------------------|------------|---------------|
| Description                                  | Percentage | 4+1 Villa     |
| Total Price                                  | 100%       | £539,000      |
| Down Payment                                 | 40%        | £215,600      |
| Untill Key handover (6 months)               | 20%        | £107,800      |
| Total 84 month installments                  | 40%        | £215,600      |
| <b>Each installment</b>                      |            | <b>£2,567</b> |



## B,C Blocks



1+1 Apartments

Ground Floor: 53 m<sup>2</sup> + 12 m<sup>2</sup> Terrace

1<sup>st</sup> Floor: 53 m<sup>2</sup> + 9 m<sup>2</sup> Terrace + 27 & 42 m<sup>2</sup> Roof Terrace



# Exterior



SUNSET BAY



# Exterior



SUNSET BAY





# Exterior



SUNSET BAY



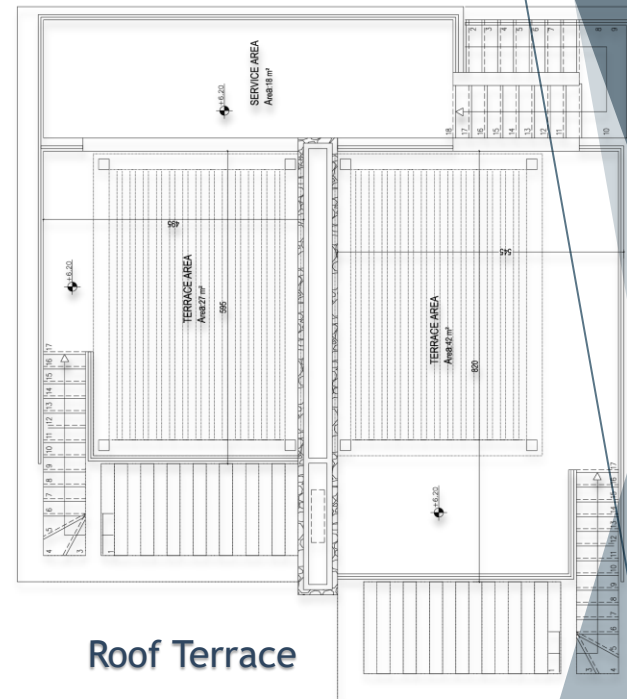
# Interior



SUNSET BAY



# Floor Plans



SUNSET BAY



# Payment Plan



| Payment Plan Detail for available apartments |            |             |
|----------------------------------------------|------------|-------------|
| Description                                  | Percentage | 1+1         |
| Total Price                                  | 100%       | £179,900    |
| Down Payment                                 | 40%        | £71,960     |
| Untill Key handover (6 months)               | 20%        | £35,980     |
| Total 84 month installments                  | 40%        | £71,960     |
| <b>Each installment</b>                      |            | <b>£857</b> |



# D,E Blocks



2+1 Duplex Semi-Detached Villas

1<sup>st</sup> Floor: 93 m<sup>2</sup> + 24 m<sup>2</sup> Terrace + 24 & 35 m<sup>2</sup> Roof Terrace



# Exterior



SUNSET BAY



# Exterior



SUNSET BAY



# Exterior



SUNSET BAY

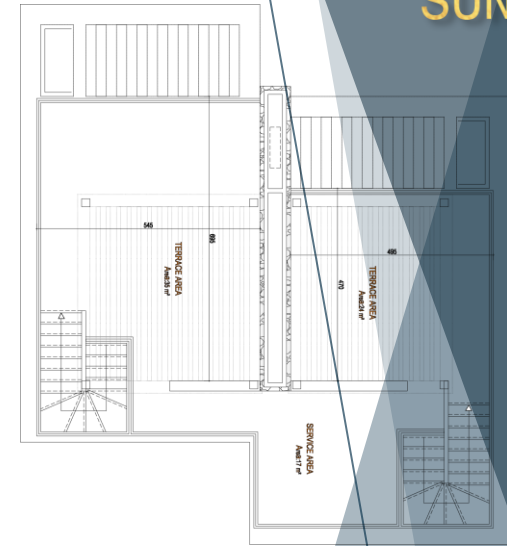




# Interior



# Floor Plans



# Payment Plan



| Payment Plan Detail for available apartments |            |               |
|----------------------------------------------|------------|---------------|
| Description                                  | Percentage | 2+1 Villa     |
| Total Price                                  | 100%       | £274,900      |
| Down Payment                                 | 40%        | £109,960      |
| Untill Key handover (6 months)               | 20%        | £54,980       |
| Total 84 month installments                  | 40%        | £109,960      |
| <b>Each installment</b>                      |            | <b>£1,309</b> |

