

# DUBAI FEELS LIKE HOME



**STONEHENGE**

**SH II**

*by* **SEGREX**



Since 1995, the Segrex Family has been a stalwart in the local business market. With flagship ventures like Segrex Development and Segrex Auto, as well as innovative projects like Digital Theater ToDa, we epitomize strategic growth and diversified excellence. Our achievements, marked by awards and strategic milestones, showcase our impact. As a driving force in the local business scene, we invite stakeholders to join us in shaping a visionary future.

**>8 years**

in the local  
business market

**>60 000 sq.M**

under construction  
now



WE BUILD FOR YOUR COMFORTABLE  
LIFE AND INVESTMENT

Astoria Residence | 2015



Nicholas Residence | 2022



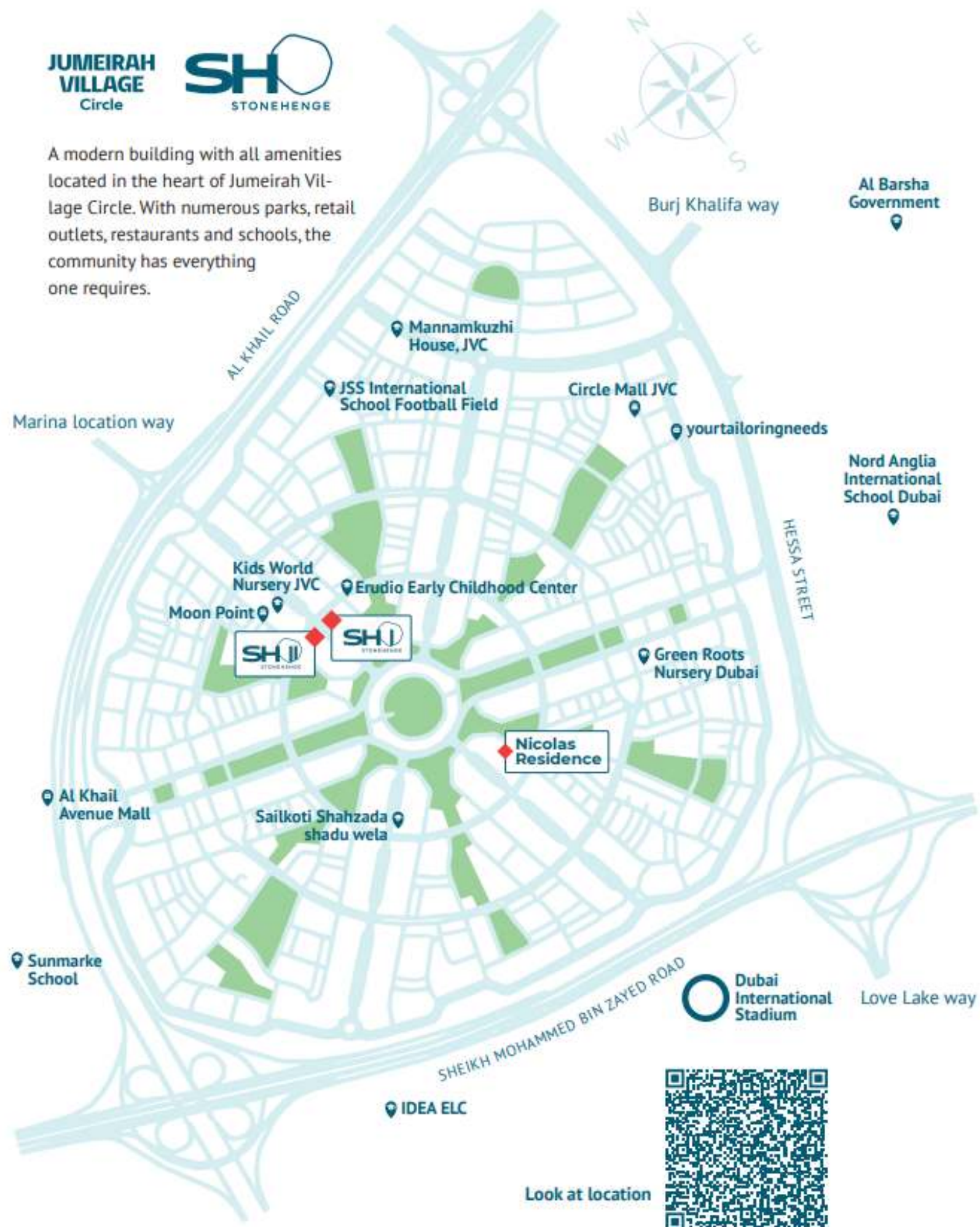
Stonehenge Residence | 2025



**JUMEIRAH VILLAGE Circle**



A modern building with all amenities located in the heart of Jumeirah Village Circle. With numerous parks, retail outlets, restaurants and schools, the community has everything one requires.



Look at location



## LOCATION

# Jumeirah Village Circle in the heart of new Dubai

## WITHIN WALKING DISTANCE

KINDERGARTENS

PRESTIGIOUS  
EDUCATIONAL  
INSTITUTIONS

MEDICAL  
CENTERS

NEAR  
CIRCLE MALL

REMRAM PARK  
FOR WALKING AND ACTIVE  
OUTDOOR GAMES (EQUIPPED  
WITH A PLAYGROUND AND SPECIAL LAWNS  
FOR PETS)

NEARBY ARE AL KHAIL ROAD AND MOHAMMED BIN ZAYED ROAD,  
WHICH LEAD TO VARIOUS POINTS IN DUBAI

01

**Circle Mall**

2 Minutes

02

**Dubai Hills Mall**

7 Minutes

03

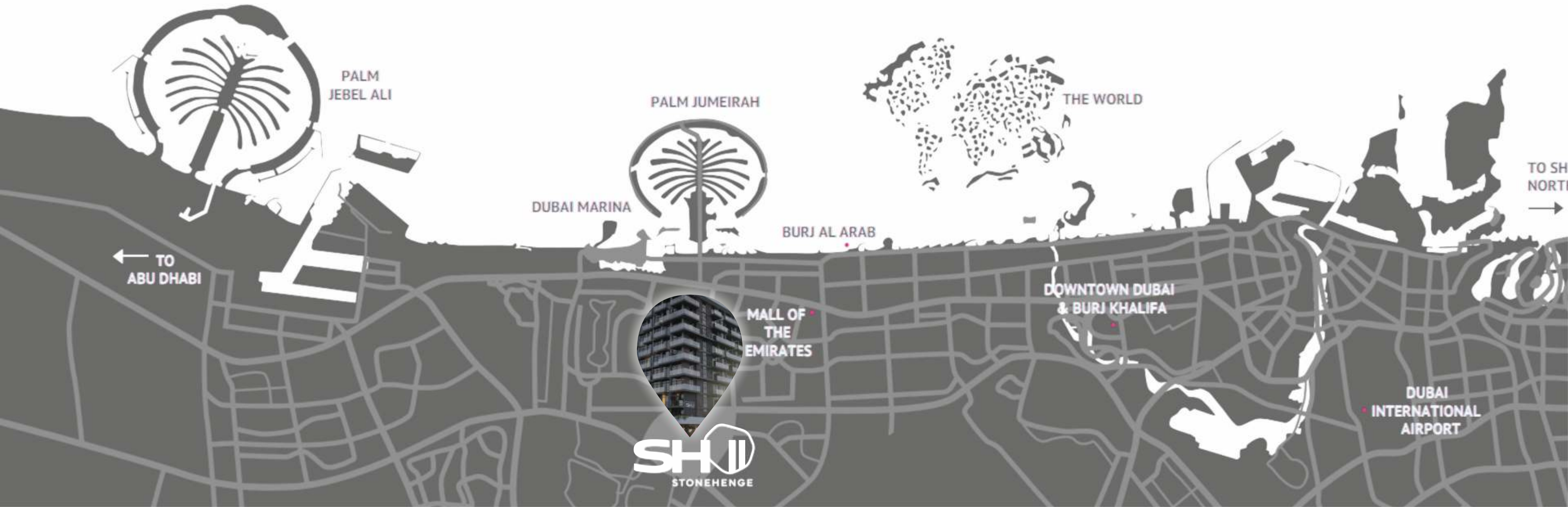
**Dubai Marina**

10 Minutes

04

**Dubai International Airport**

25 Minutes



# STONEHENGE

by **SEGREX**

A RESIDENTIAL COMPLEX IN A MODERN SCANDINAVIAN STYLE, WITH A LARGE ROOFTOP SWIMMING POOL AND CONVENIENT INTERNAL INFRASTRUCTURE.



**48**  
STUDIOS

**100**  
ONE BEDROOM APARTMENTS

**4**  
TWO BEDROOM APARTMENTS

**10**  
RESIDENTIAL FLOORS

**4**  
UNDERGROUND PARKING FLOOR

**100**  
SQ.M GYM

01

**INFINITY POOL**

overlooking the city



02

**15 METERS**

long



03

**REFRESHING COOLNESS**

in summer



04

**HEATED**

in winter











## THE COURTYARD

As for the walking path with children, imagine colorful stepping stones leading to hidden corners filled with child-friendly wonders—with a tiny fairy garden or a playful sculpture. The laughter of children blends with the melody of birds, making every stroll a magical adventure.





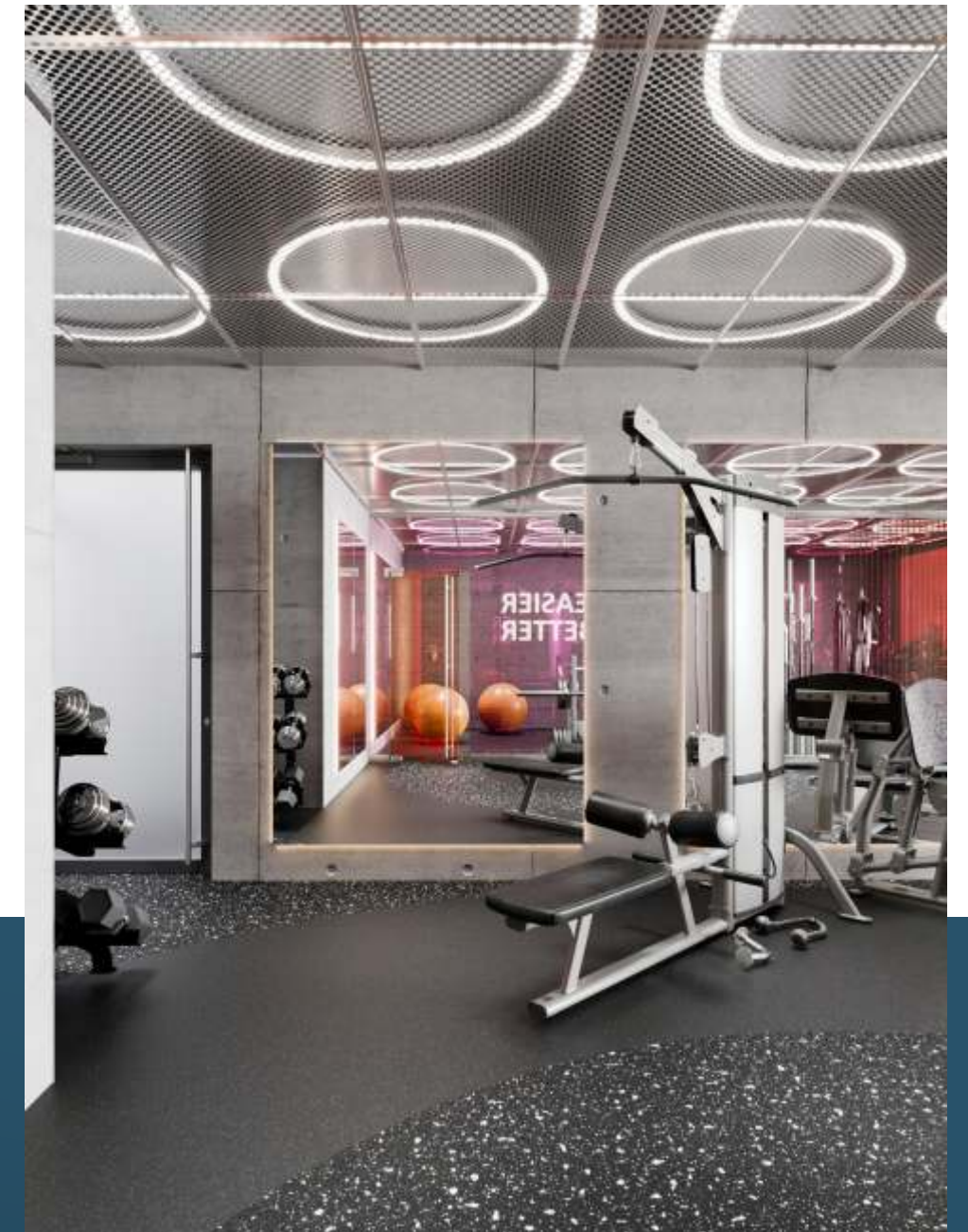


## FITNESS ROOM

**100**  
sq.m.

**technogym**  
fitness equipment

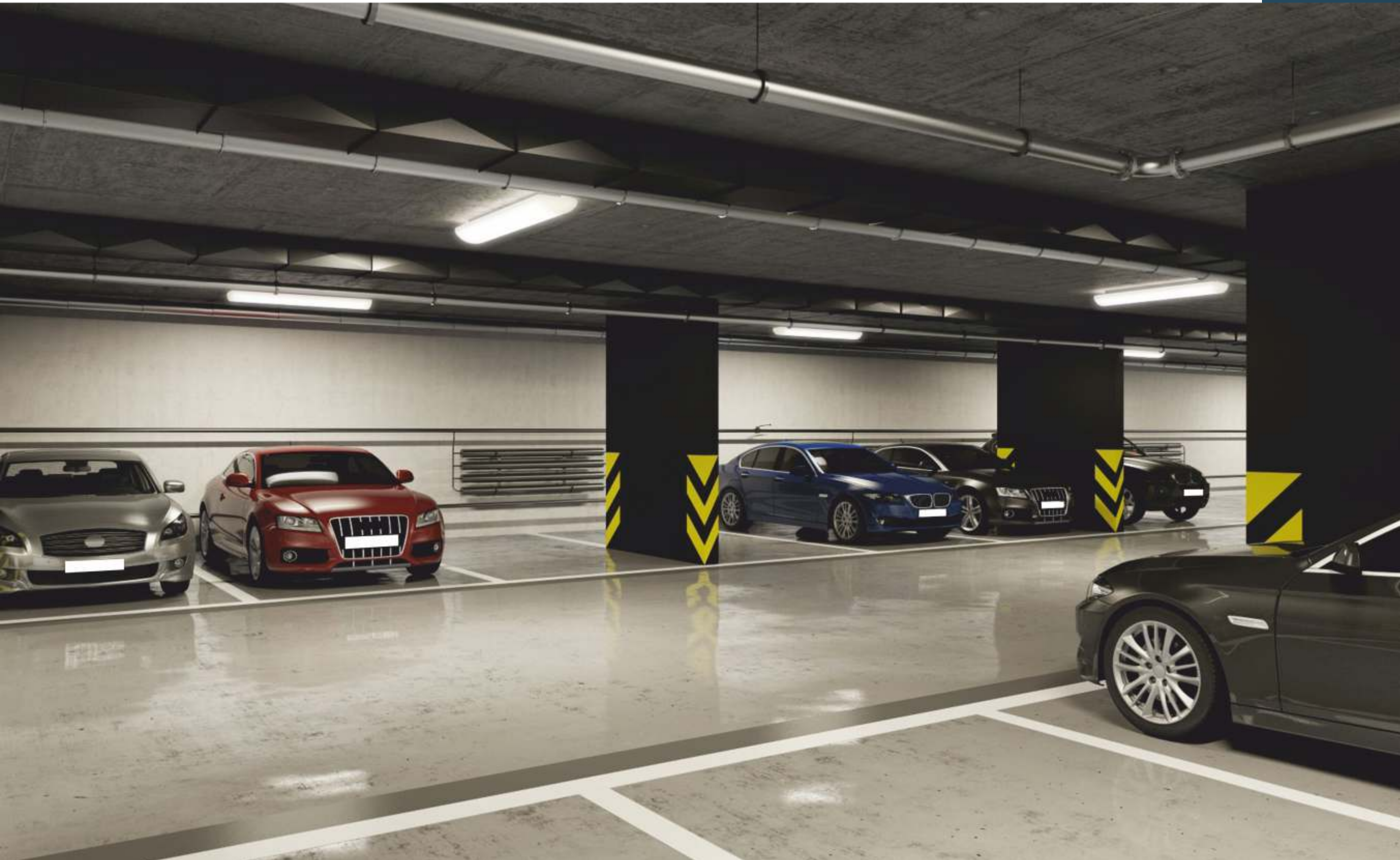
**SAUNA**  
and hammam



A large fitness room with all equipment is available to all residents and their guests

## UNDERGROUND PARKING

Stonehenge residents can now enjoy the convenience of underground parking — a luxury that promises to make their daily commute a whole lot smoother. No more circling the block in search of a spot—just a seamless parking experience right beneath their feet.



# 4

underground  
floors

# 7

places for charging  
electric cars

## ΠΑΡΚΟΒΚΑ

for bicycles and  
electric scooters



# FEEL COMFORTABLE ALREADY AT THE ENTRANCE TO YOUR HOUSE



## STYLISH LOBBY

where a welcoming reception desk beckons



## 3

lounge areas with upholstered sofas and armchairs



## 3

high-speed elevators  
Kone or Schindler

## CINEMA

You can spend cozy evenings outside, in the fresh air, with your family and children watching their favorite movies



## BBQ

A multifunctional barbecue area is located on the roof next to the infinity pool.





01

## KITCHEN APPLIANCES Bosch™

oven  
microwave  
gas stove

fridge  
dishwasher  
washing machine

02

## CLEAN AIR

There is air purification through filtration systems g4/f6 in apartments

03

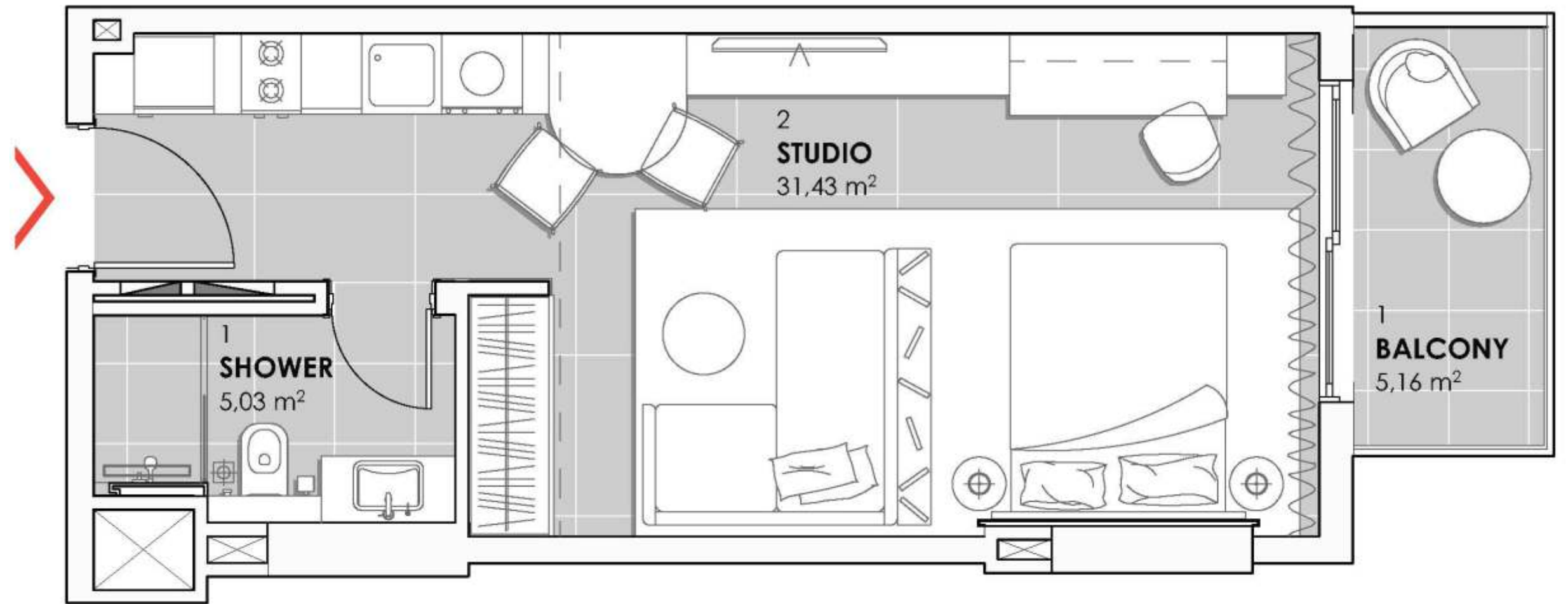
## COLD WATER

The water in the tap is cooled by a cooling system



# STUDIOS

FROM 441.43 SQ FT  
TO 683.08 SQ FT



Second floor - Tenth floor



Dubai Marina

Burj Khalifa

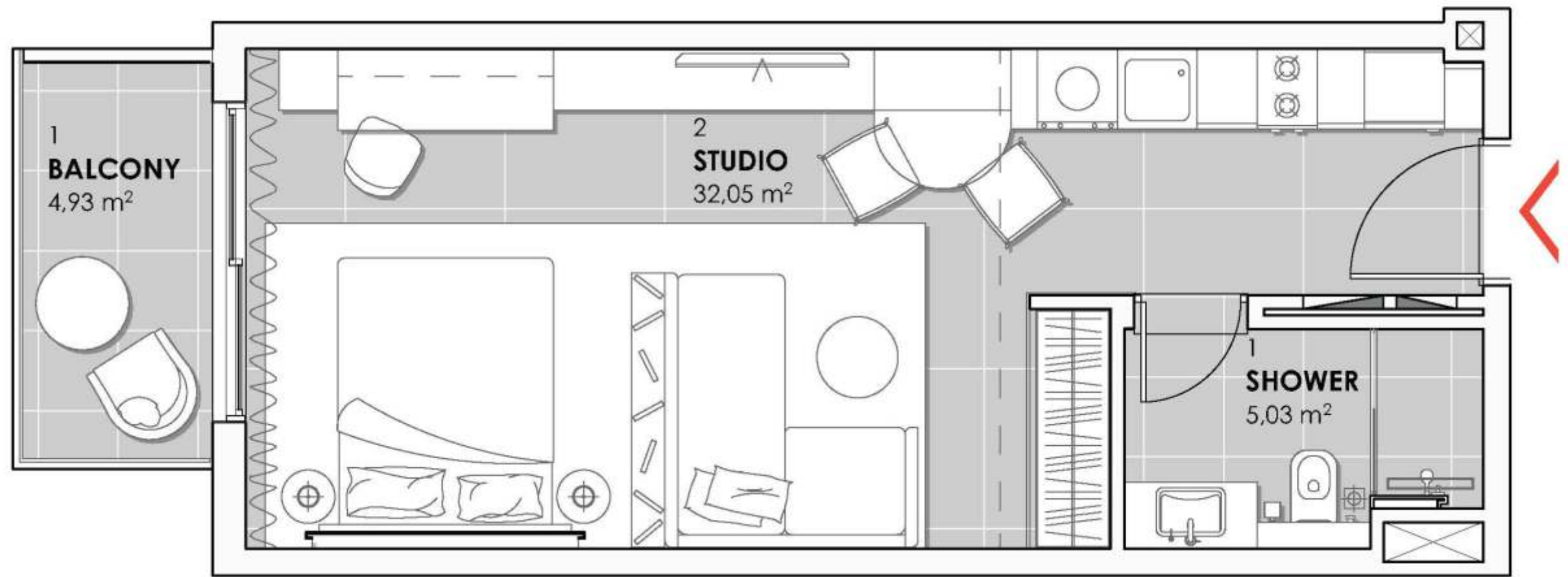


## STUDIO APARTMENT TYPE A

Apt. no. 202, 302, 402, 502,  
602, 702, 802, 902, 1002

# STUDIOS

FROM 441.43 SQ FT  
TO 683.08 SQ FT

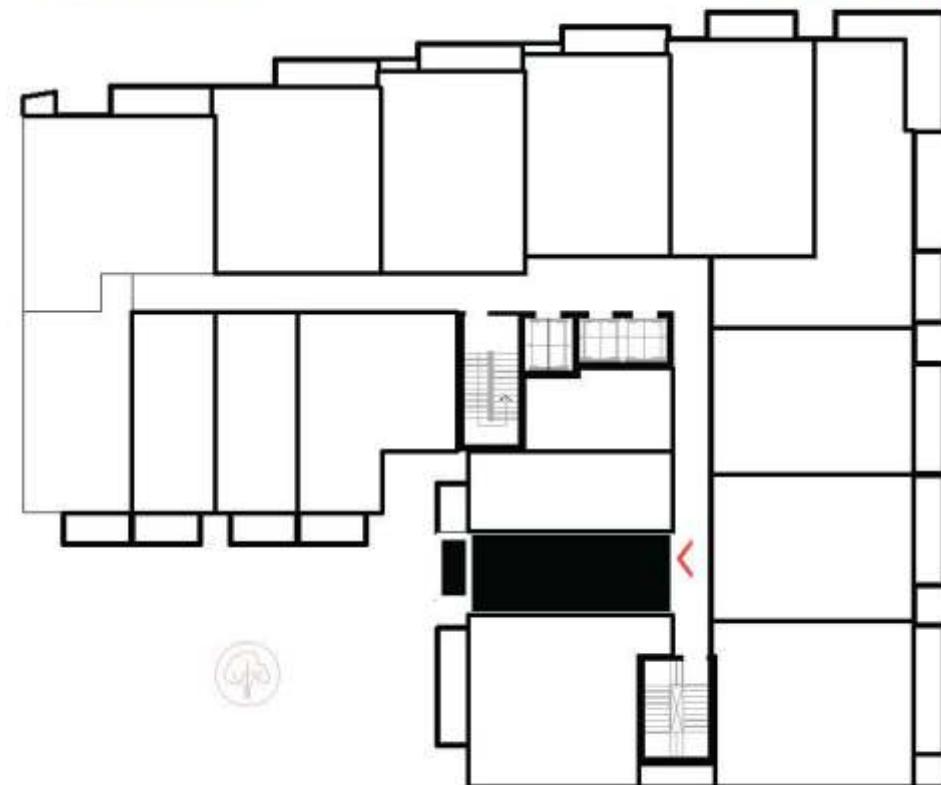


Second floor - Tenth floor



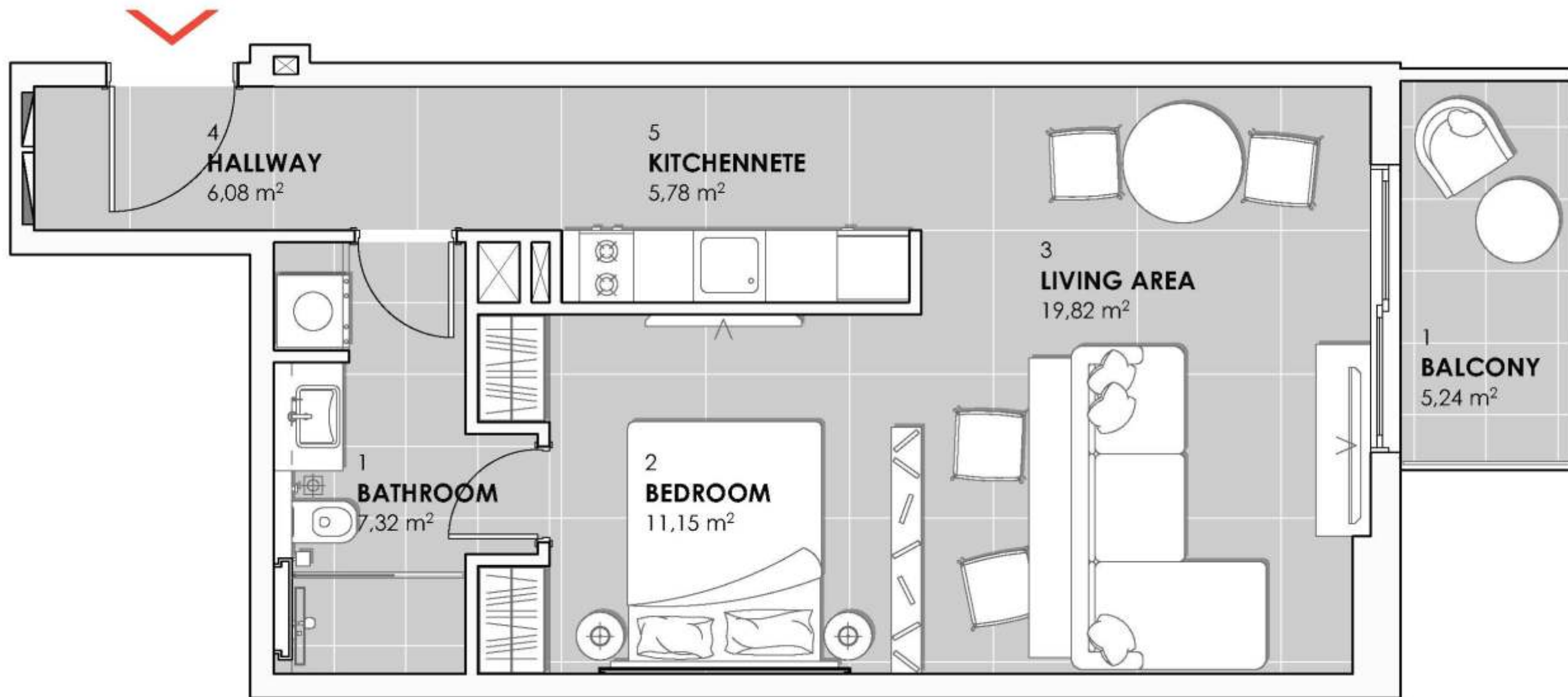
Dubai Marina

Burj Khalifa



## STUDIO APARTMENT TYPE A

Apt. no. 215, 315, 415, 515,  
615, 715, 815, 915, 1010

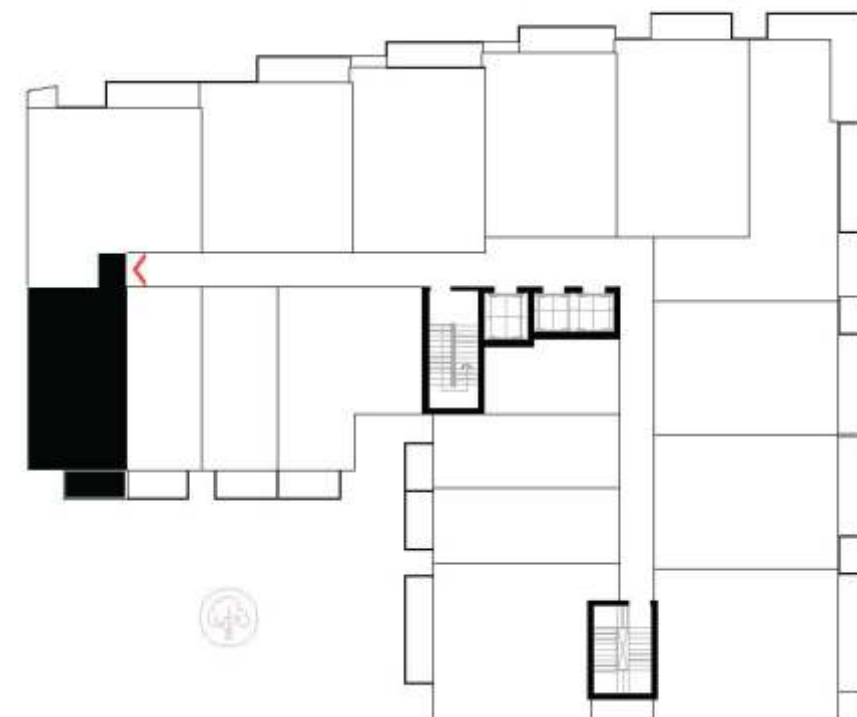


Second floor - Tenth floor



Dubai Marina

Burj Khalifa



# STUDIOS

FROM 441.43 SQ FT  
TO 683.08 SQ FT

## STUDIO APARTMENT TYPE B

Apt. no. 204, 304, 404, 504,  
604, 704, 804, 904, 1004

01

# KITCHEN AND LIVING ROOM





02

RECREATION AREA



03

**BATHROOM**

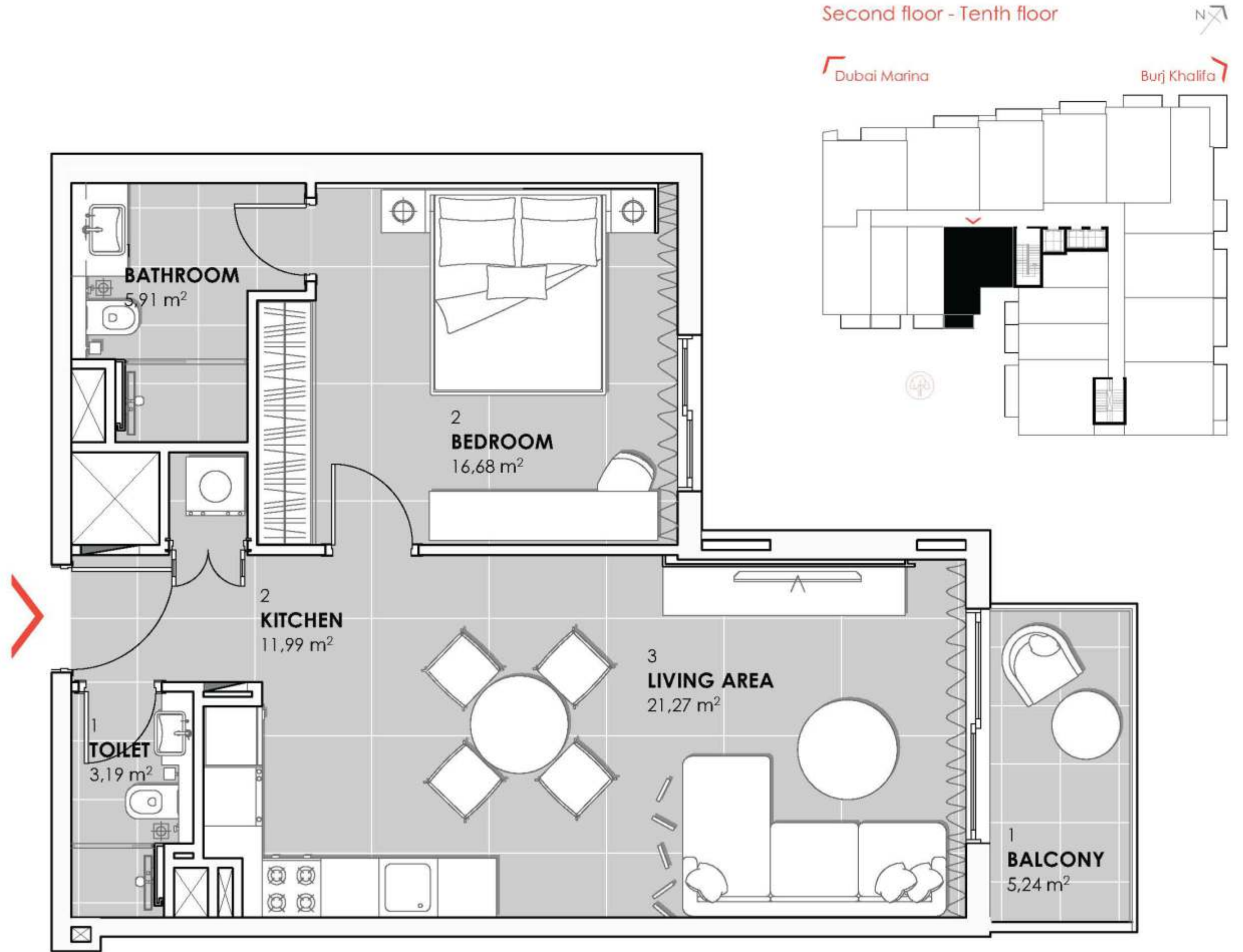


# ONE BEDROOM

FROM 691.80 SQ FT  
TO 1020.10 SQ FT

## ONE BEDROOM APARTMENT TYPE A

Apt. no. 201, 301, 401, 501,  
601, 701, 801, 901, 1001

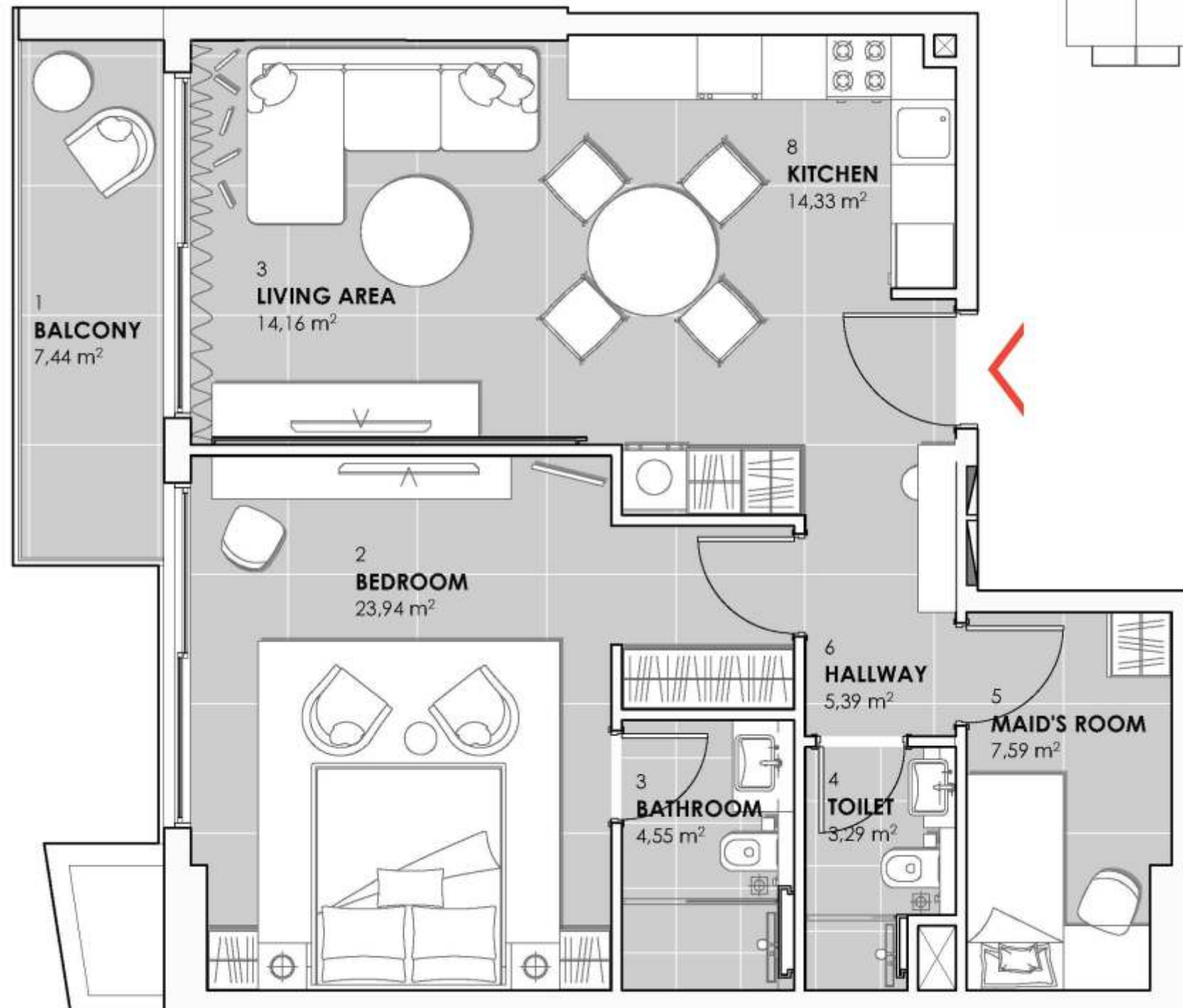
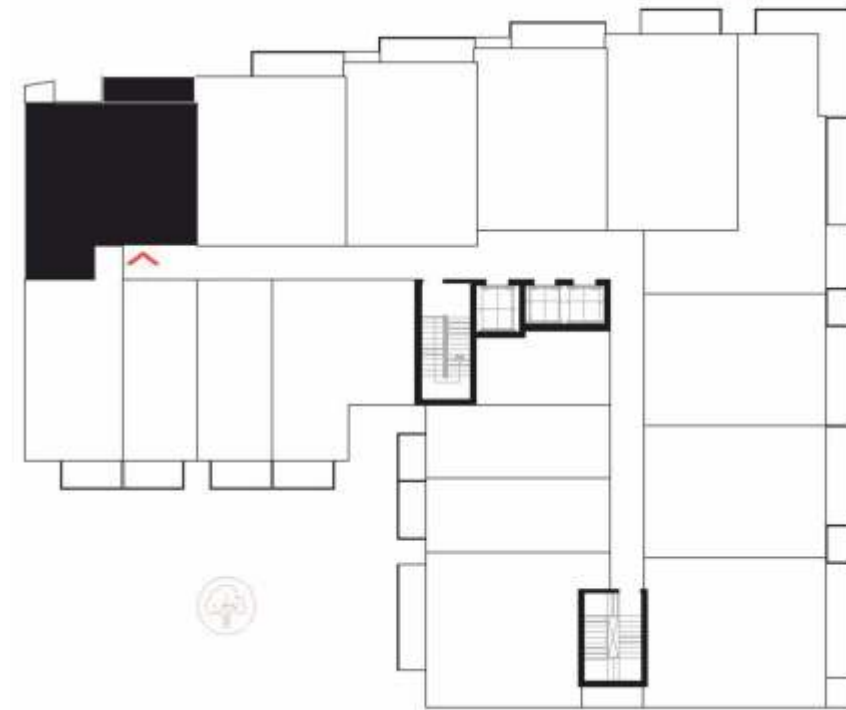


Second, third, fifth, sixth, eighth, ninth floor



Dubai Marina

Burj Khalifa



# ONE BEDROOM

FROM 691.80 SQ FT  
TO 1020.10 SQ FT

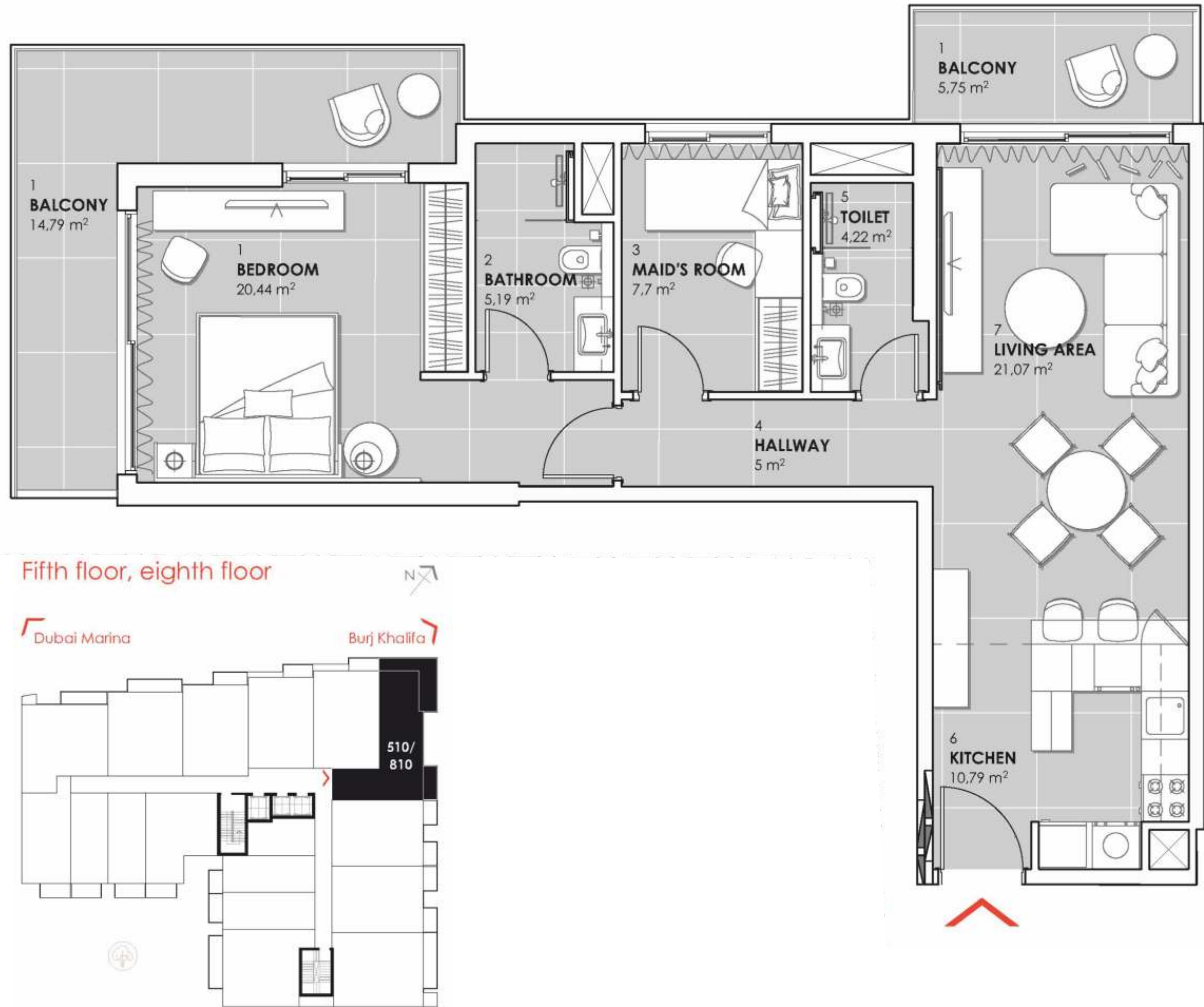
## ONE BEDROOM APARTMENT TYPE H

Apt. no. 205, 305, 405, 505,  
605, 705, 805, 905

# ONE BEDROOM

FROM 691.80 SQ FT  
TO 1020.10 SQ FT

**ONE BEDROOM APARTMENT TYPE C**  
Apt. no. 510,810



01

**HALL AND WARDROBE**



02

**KITCHEN AND LIVING ROOM**



03

**BEDROOM**





04

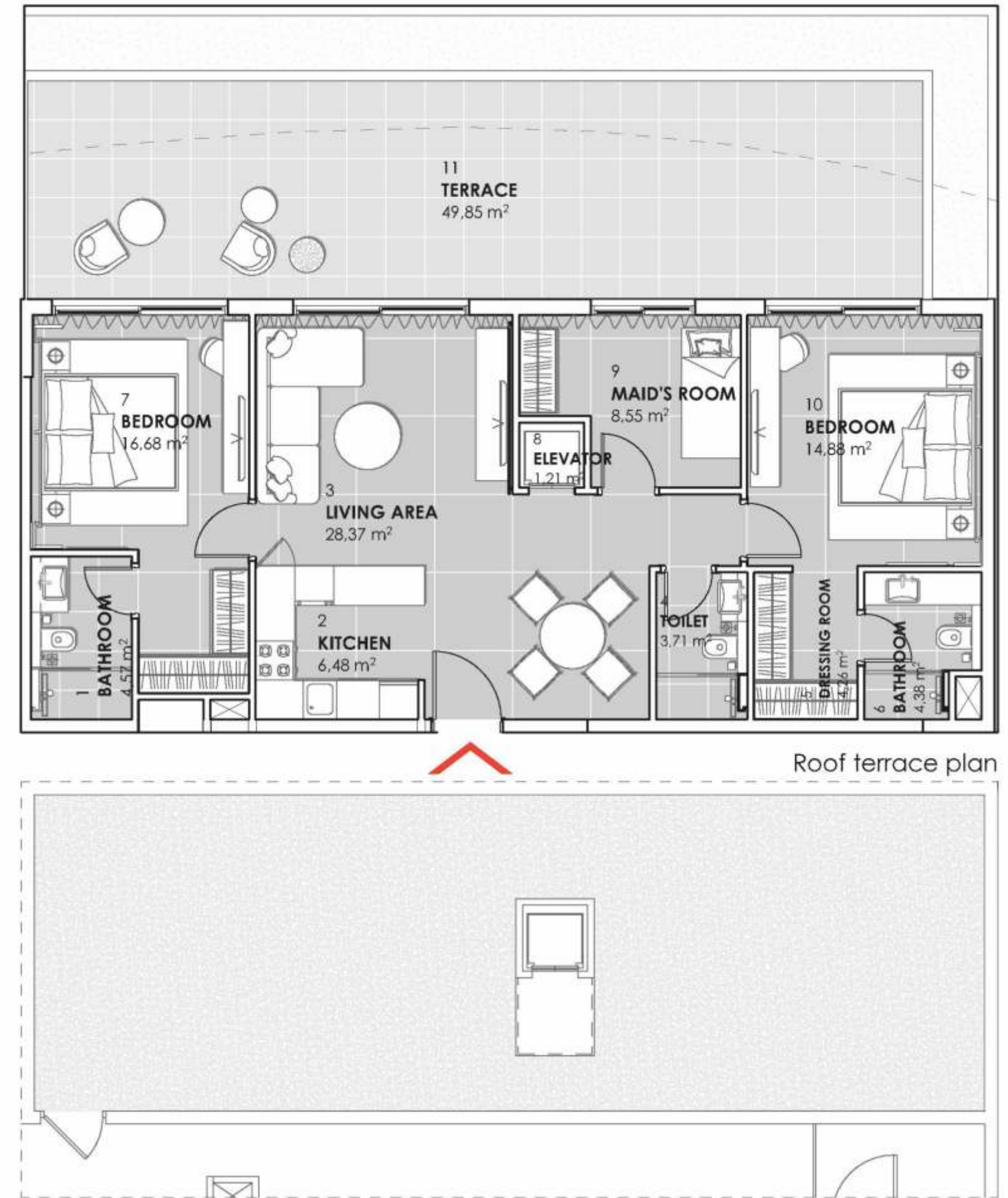
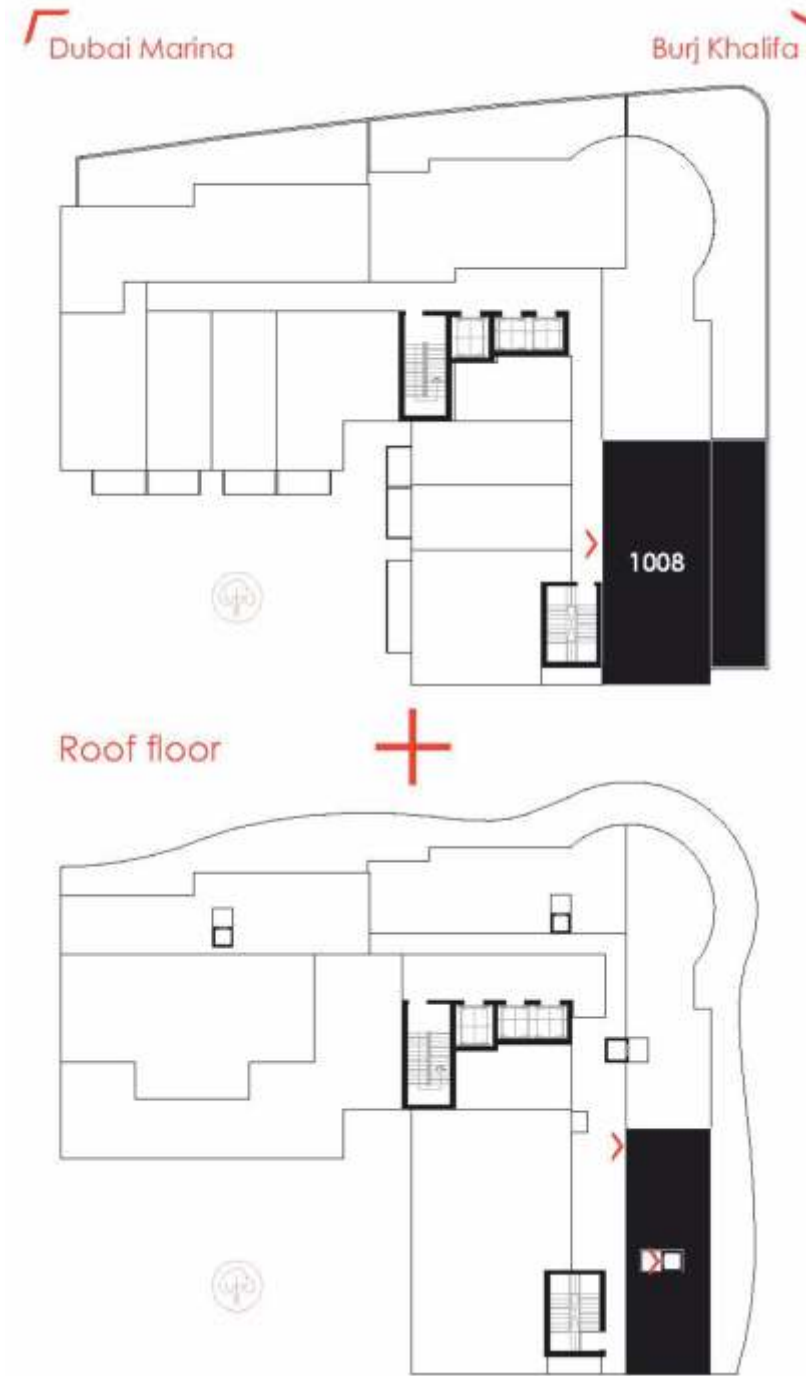
**BATHROOM**



# TWO BEDROOM

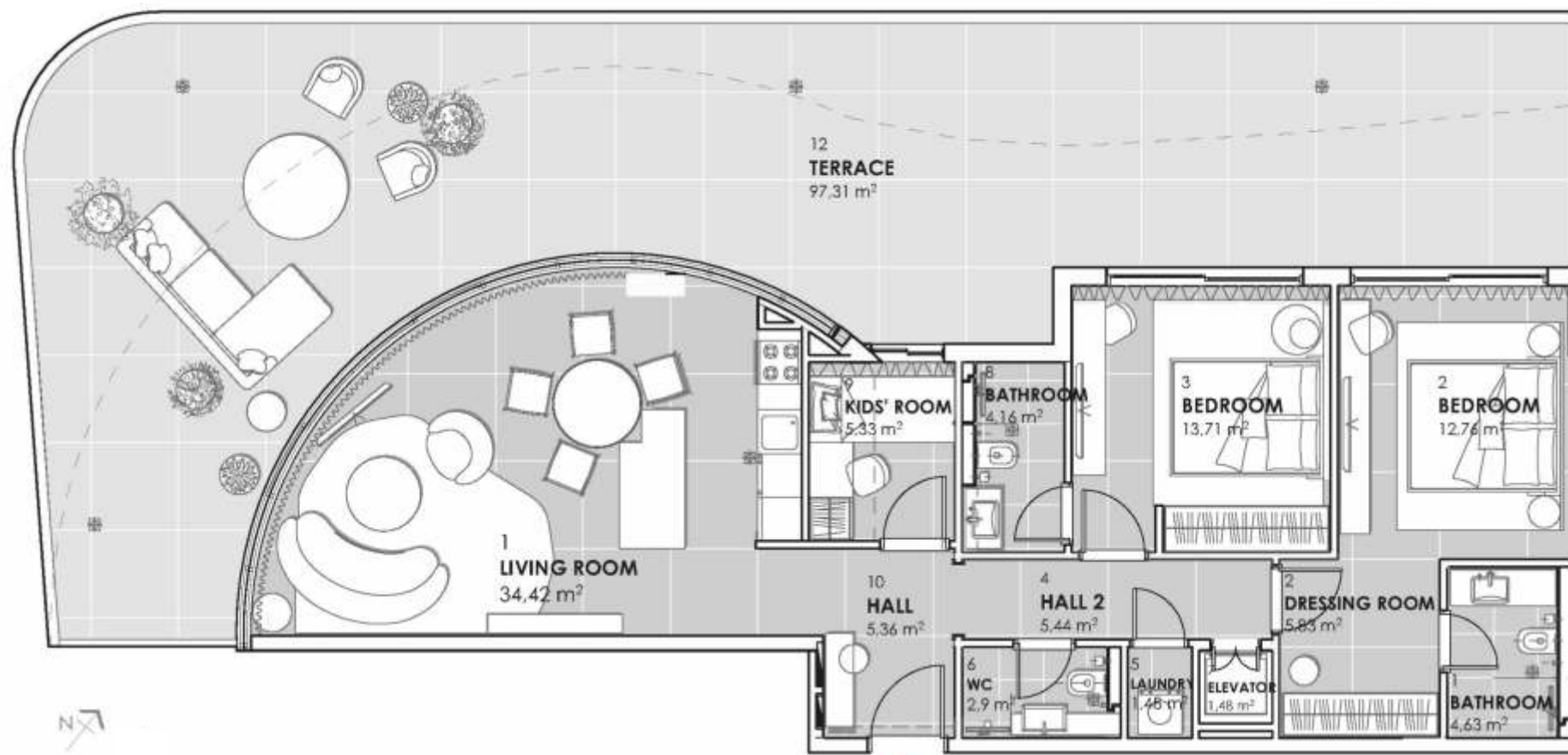
FROM 2337.58 SQ FT  
TO 3010.24 SQ FT

**TWO BEDROOM APARTMENT TYPE A**  
Apt. no. 1008



# TWO BEDROOM

FROM 2337.58 SQ FT  
TO 3010.24 SQ FT



Tenth floor

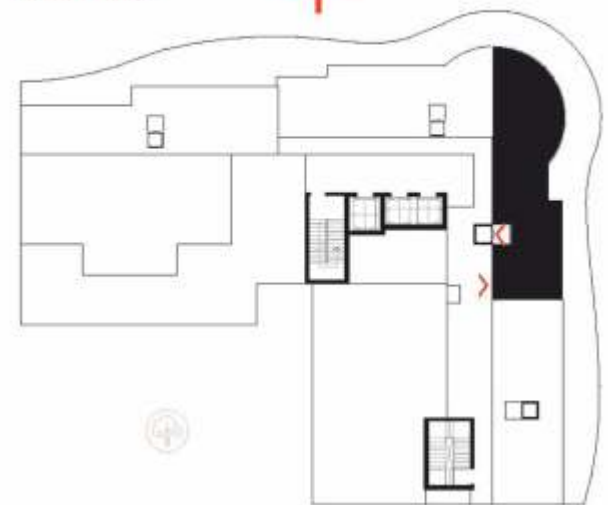


Dubai Marina

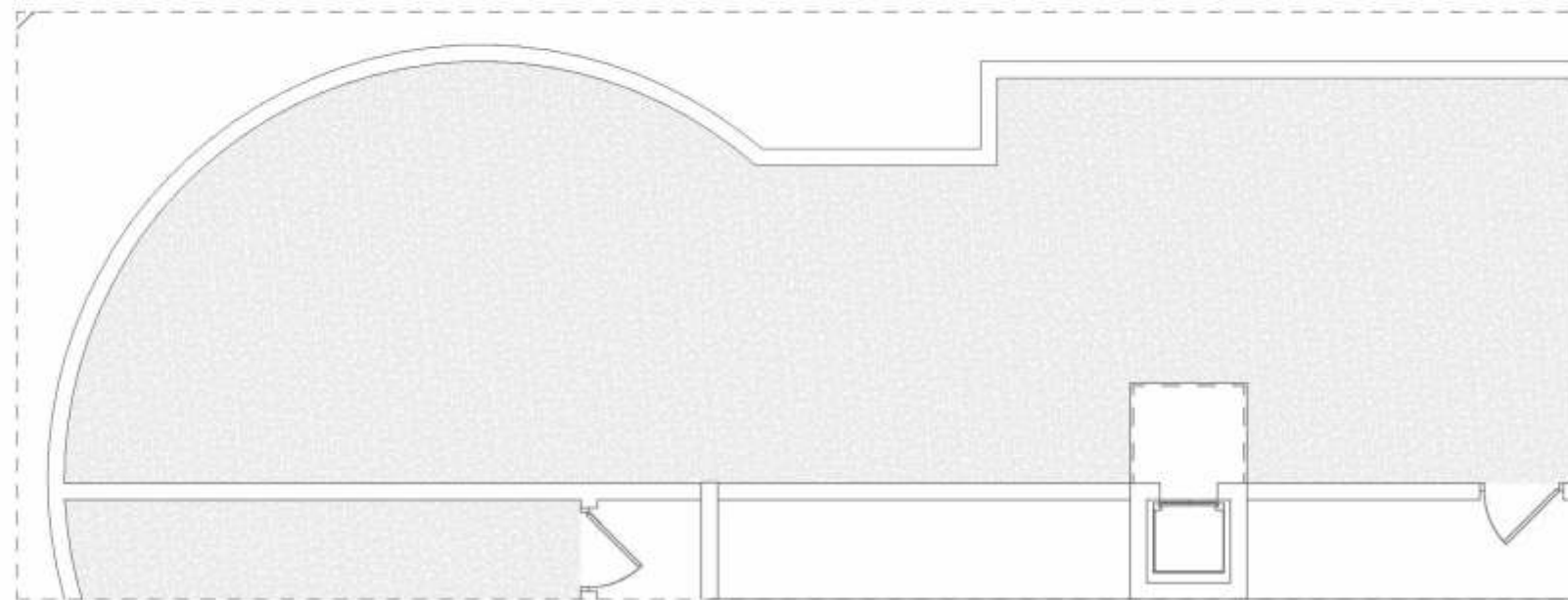
Burj Khalifa



Roof floor



Roof terrace plan



**TWO BEDROOM APARTMENT TYPE B**

Apt. no. 1007

01  
HALL



02

**KITCHEN AND LIVING ROOM**



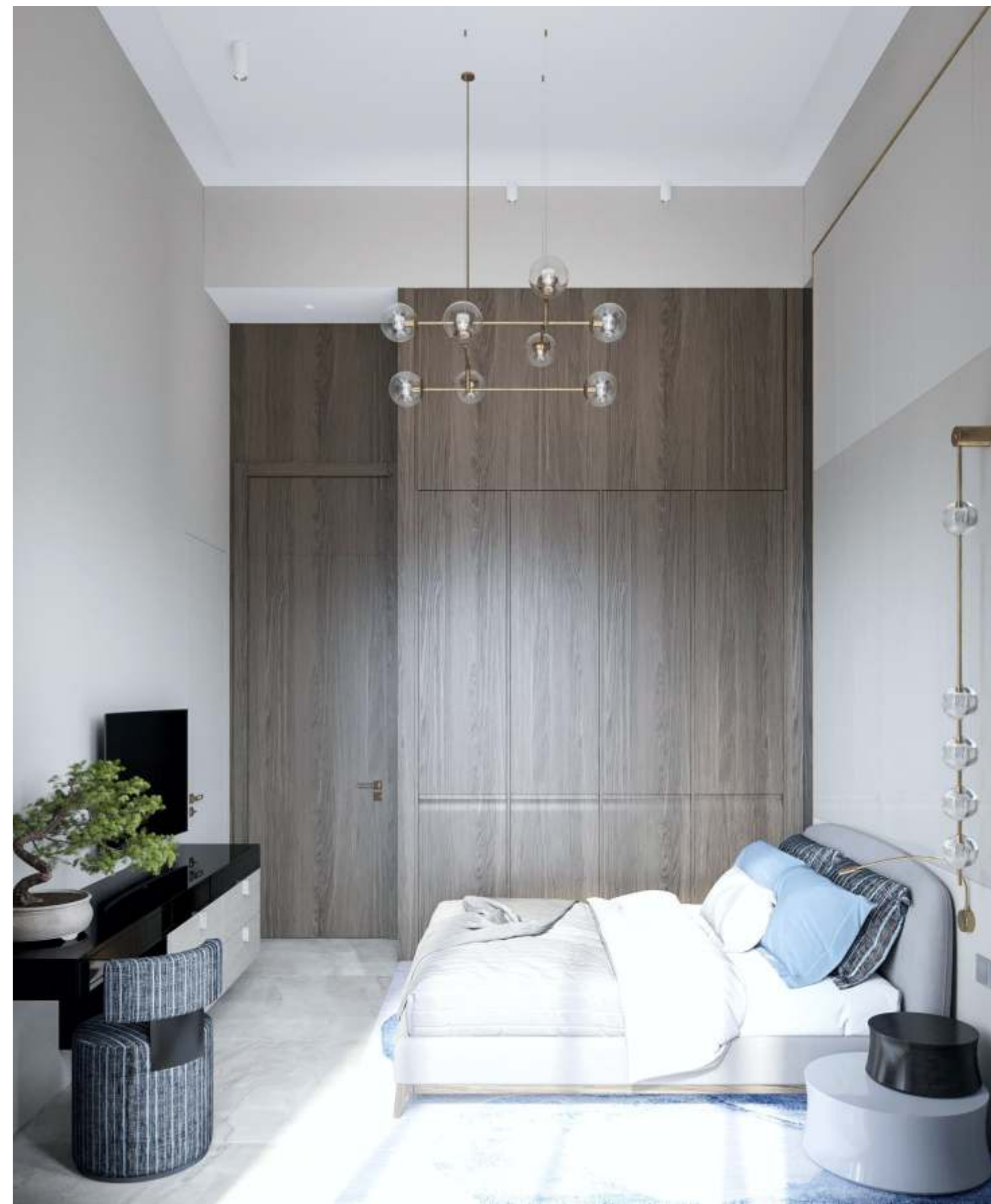
03

MASTER BEDROOM



04

**BEDROOM**



05

MAIDS ROOM





06

**BATHROOM**



07

MASTER WC



08

## PRIVATE TERRACE



In each two-room apartment on the 10th floor, you will find a magnificent view and access to your private terrace - it sounds like the perfect combination of tranquility and city life.

**A silent hydraulic elevator** will take you to the terrace directly from the apartments.





# PAYMENT PLAN

**5%**

ON BOOKING

**15%**

WITHIN 30 DAYS  
OF BOOKING

**10%**

WITHIN 30 DAYS  
FROM THE MOMENT  
OF THE SECOND PAYMENT

**5%**

WITHIN 3 MONTHS  
FROM THE DATE  
OF THE THIRD PAYMENT

**10%**

WITHIN 4 MONTHS  
FROM THE DATE  
OF THE FOURTH PAYMENT

**5%**

WITHIN 3 MONTHS  
FROM THE DATE  
OF THE FIFTH PAYMENT

**10%**

WITHIN 4 MONTHS  
FROM THE DATE  
OF THE SIXTH PAYMENT

**40%**

WITHIN 5 MONTHS  
FROM THE DATE  
OF THE SEVENTH PAYMENT  
(ON COMPLETION)

## **STATISTICS BY RENT**

The cost of renting housing in the JVC area is increasing every year.  
Today, apartments of similar quality are rented at the following prices:

01  
**STUDIOS**

**from 50 000 AED/per year**

02  
**ONE BEDROOM**

**from 80 000 AED/per year**

03  
**TWO BEDROOM**

**from 100 000 AED/per year**

