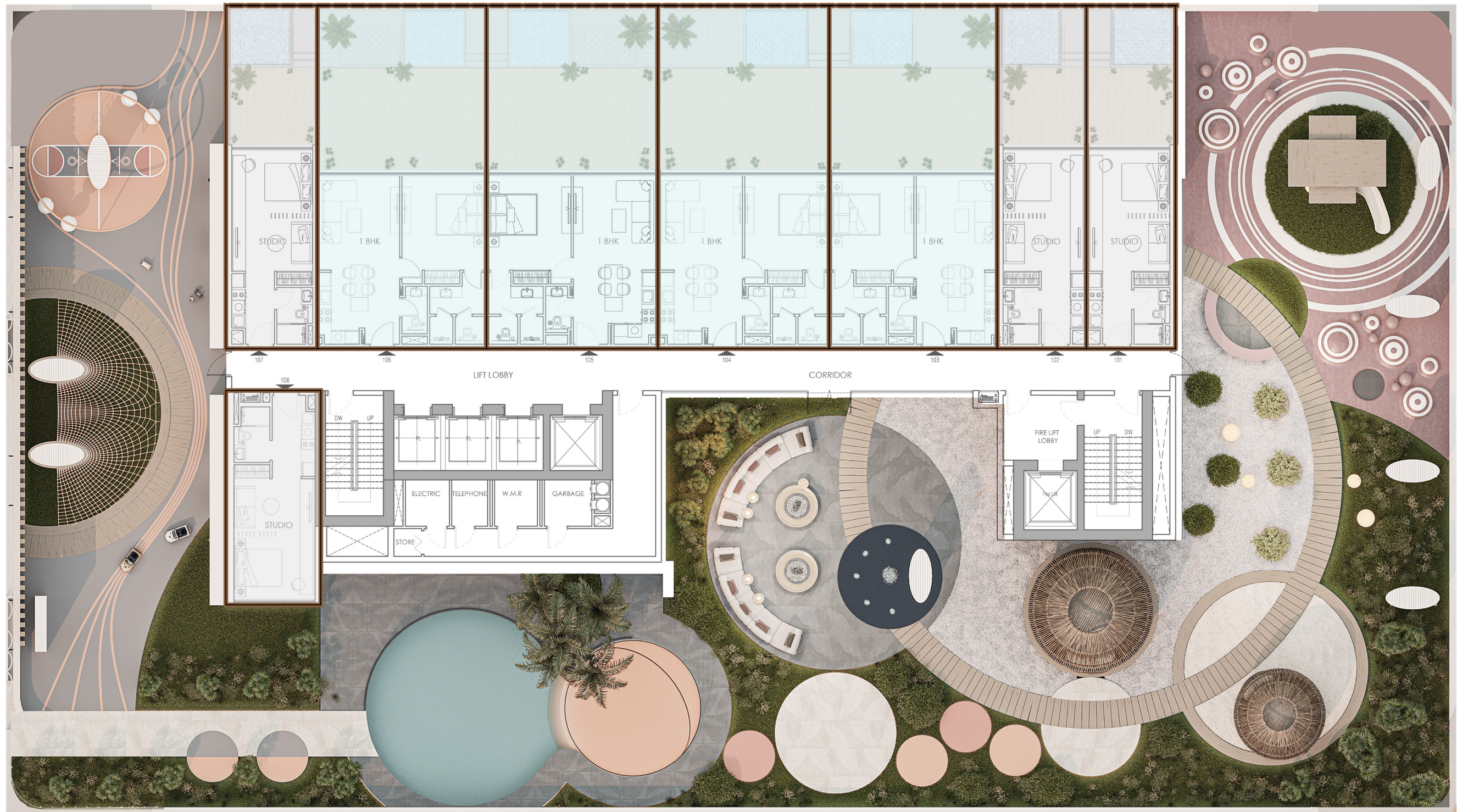


LEGADO

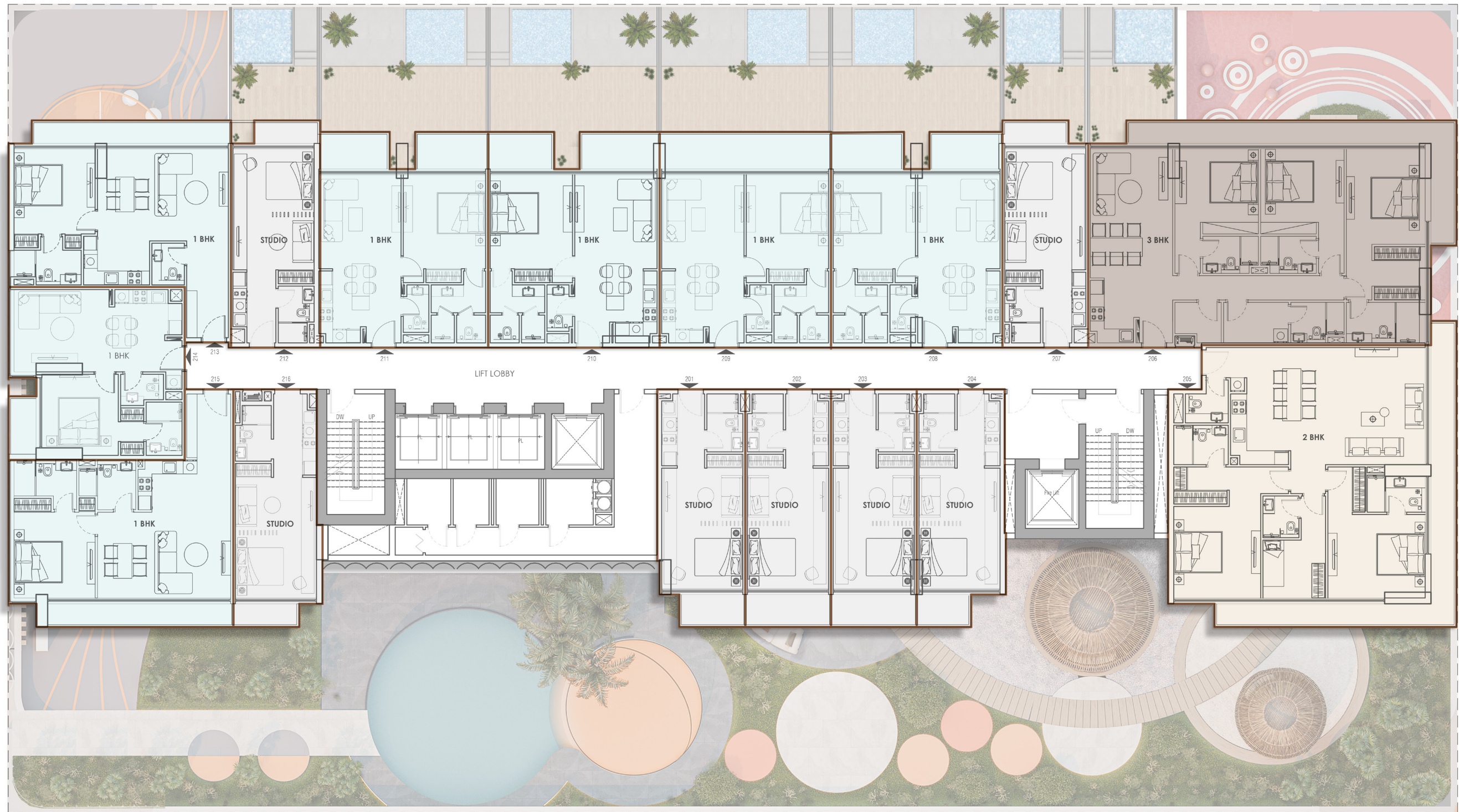
— BY PRESCOTT —

Floor Plans



First Floor

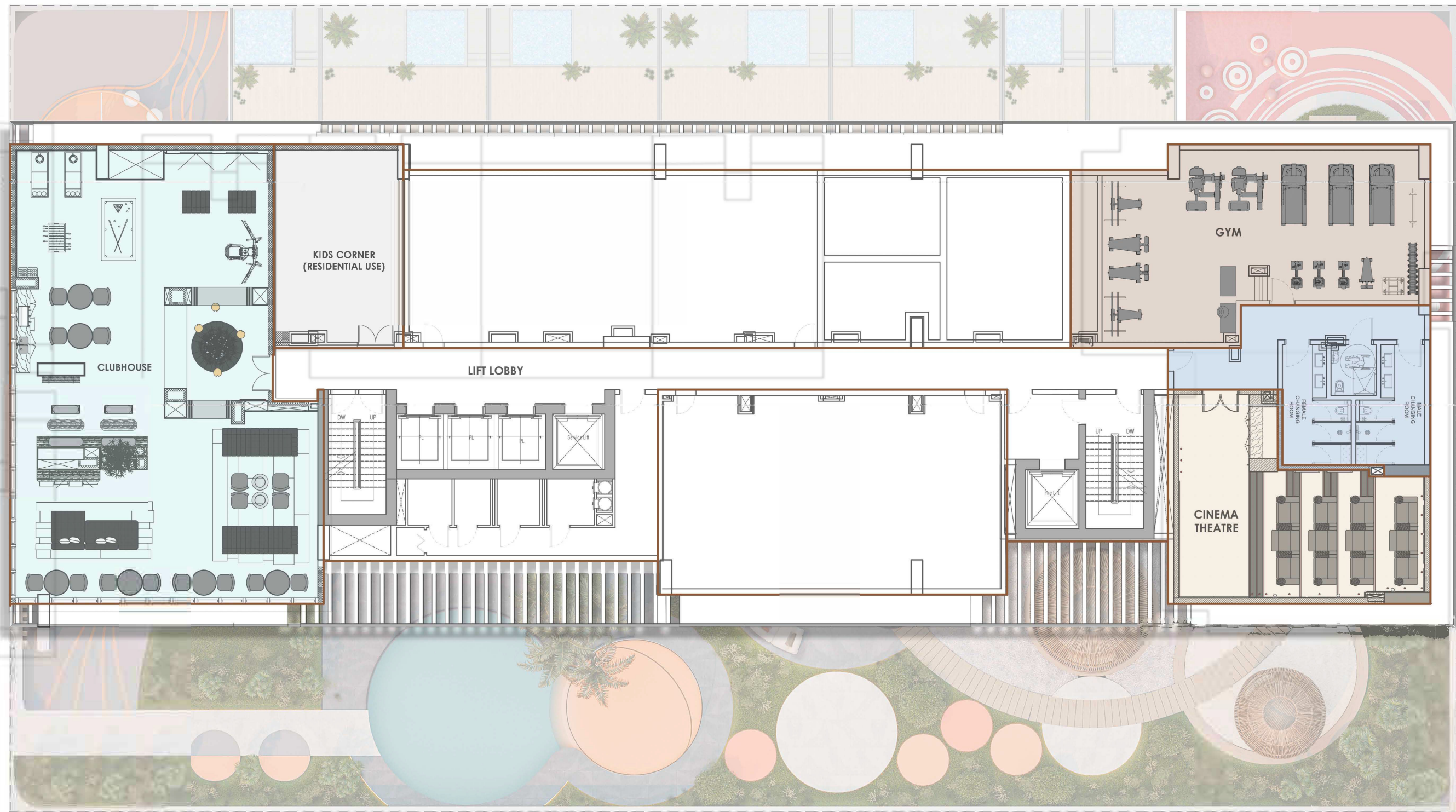
- Studio
- 2-Bhk
- 1-Bhk
- 3-Bhk



Typical Floor

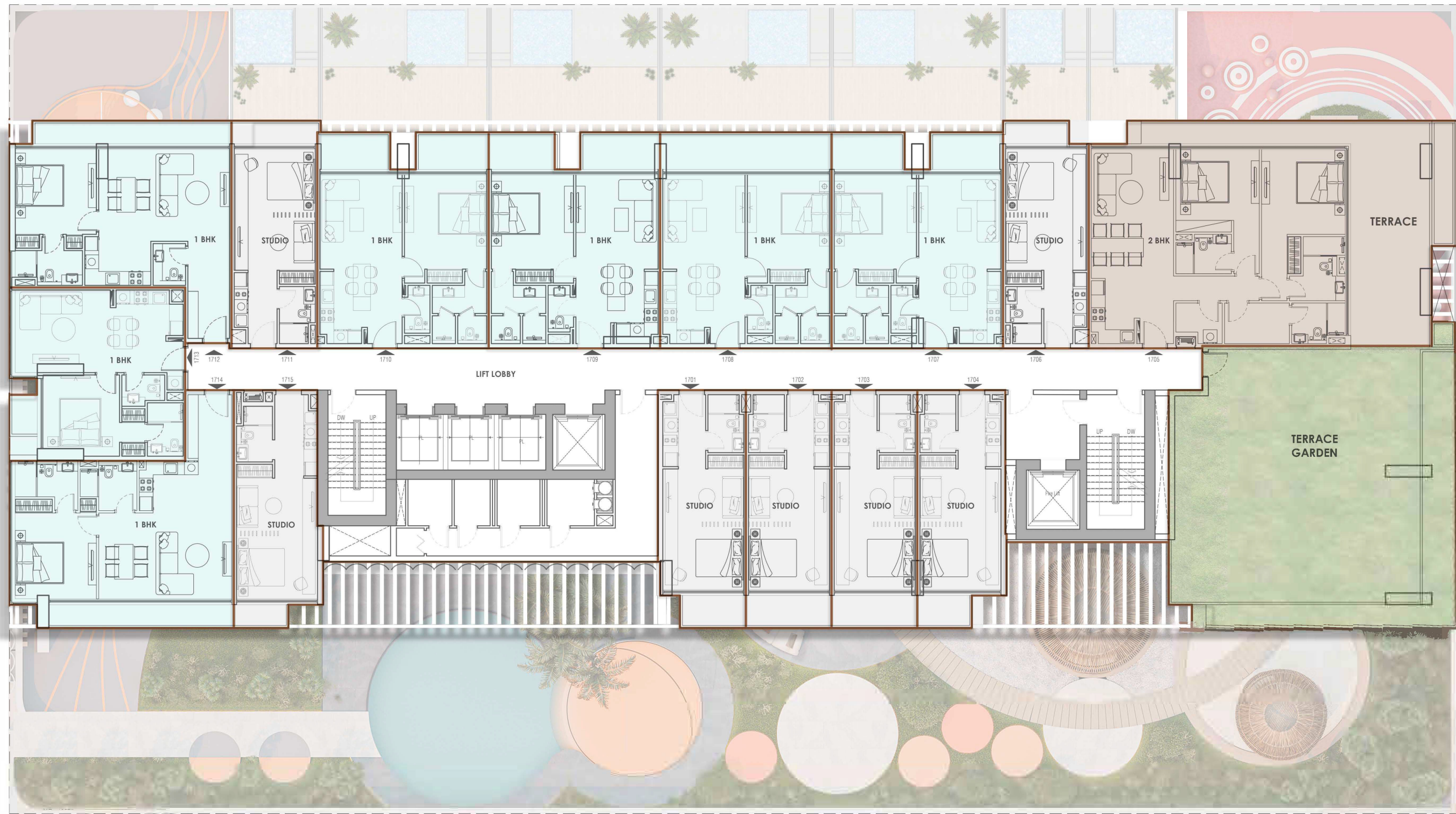
(2nd, 3rd, 4th, 5th, 6th, 7th, 8th, 9th, 10th, 11th, 12th, 13th, 15th, 16th, 18th, 20th, 22nd, 23rd)

- | | | | |
|---------------------------------------------------------------------------------------|--------|---------------------------------------------------------------------------------------|-------|
|  | Studio |  | 2-Bhk |
|  | 1-Bhk |  | 3-Bhk |



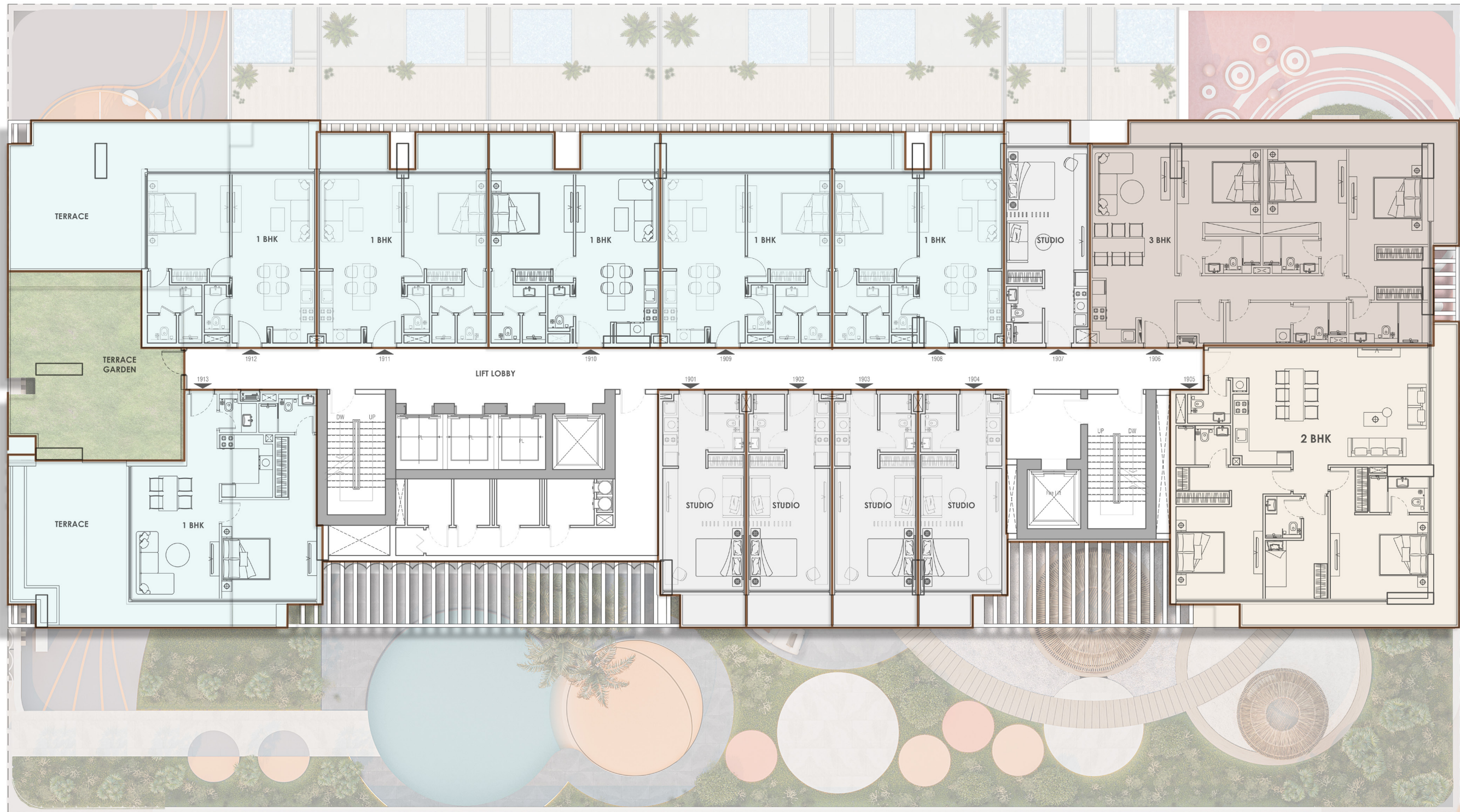
14th Floor

- Kid's Corner
 - Club House
 - Male/Female Changing Room
- Cinema Theatre
 - Gym



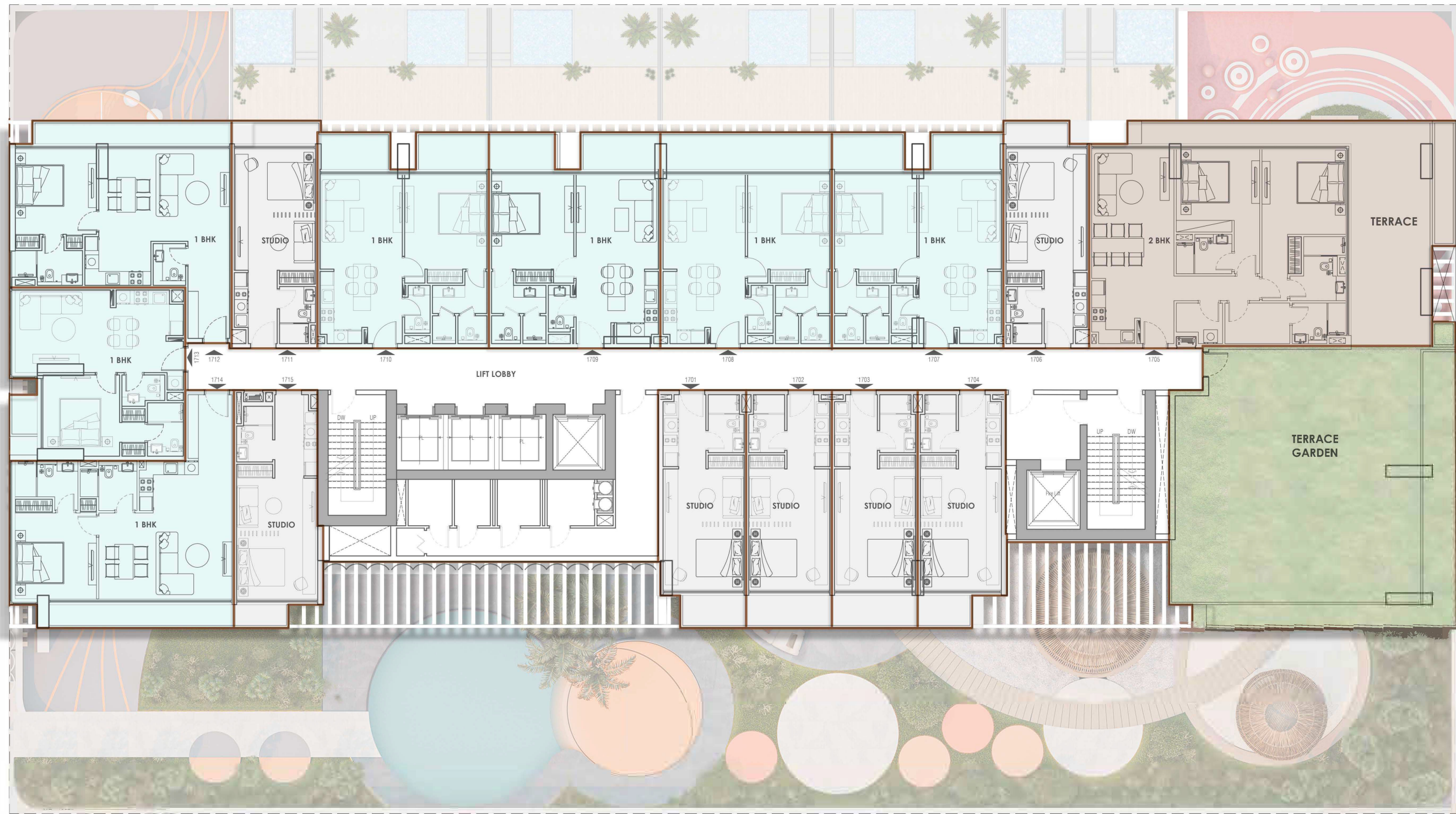
17th Floor

- Studio
- 2-Bhk
- 1-Bhk
- 3-Bhk



19th Floor

-
 Studio
-
 1-Bhk
-
 2-Bhk
-
 3-Bhk



21st Floor

- Studio
- 1-Bhk
- 2-Bhk
- 3-Bhk



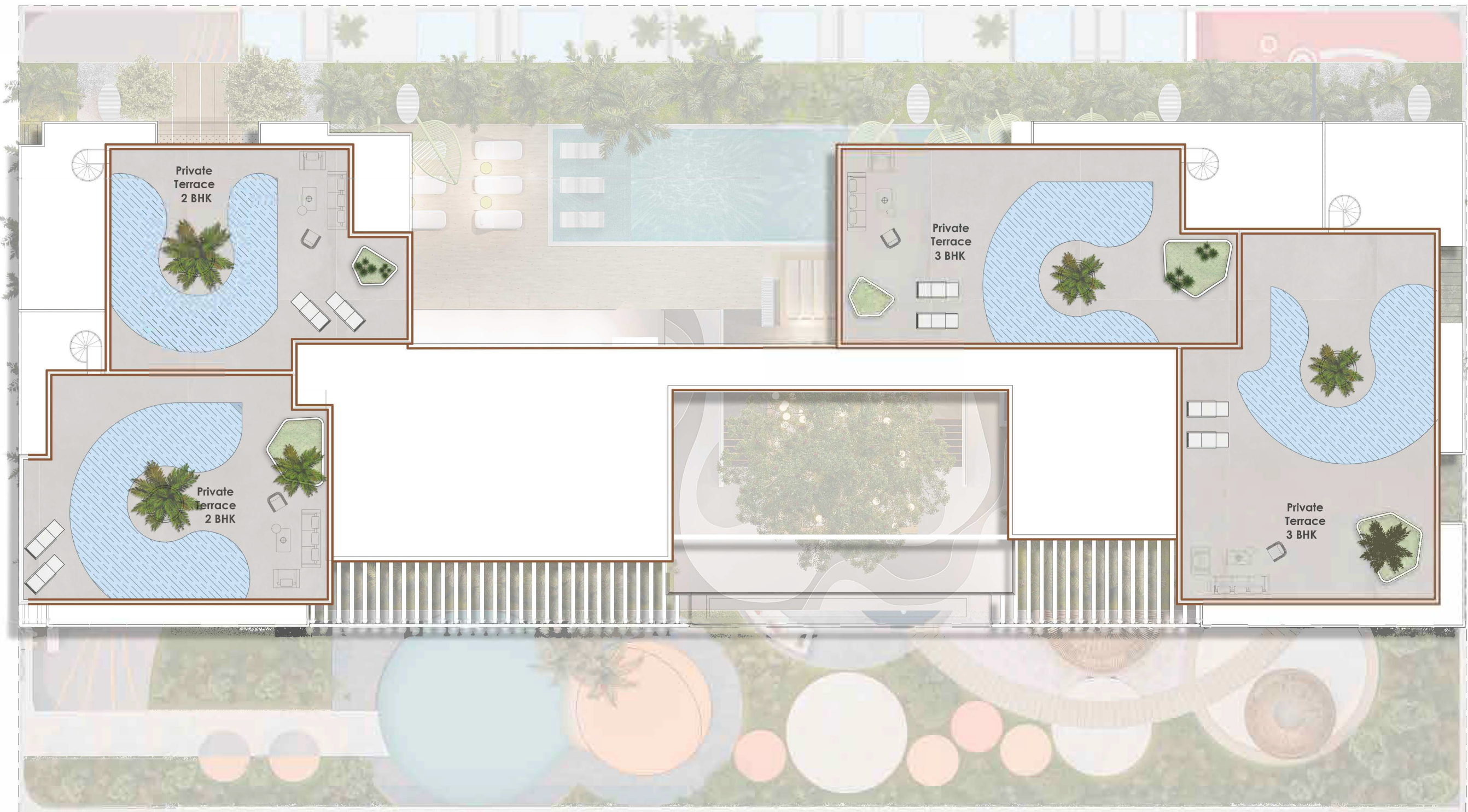
24th Floor

- | | |
|------------------------------------------------------------------------------------------|-------------------------------------------------------------------------------|
| 01 Swimming Pool | 04 Seating Area |
| 02 Pool Deck | 05 TT Deck |
| 03 Male/Female Changing Room | 06 Landscape area |

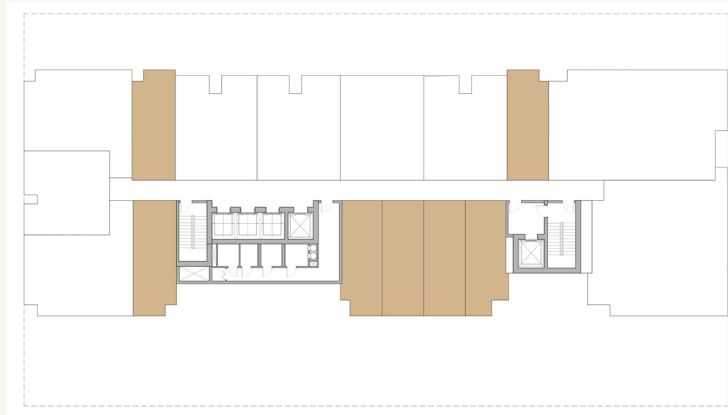


25th Floor

-
 Glass Corridor Bridge
-
 2-Bhk
-
 3-Bhk



26th Floor



Studio Apartment

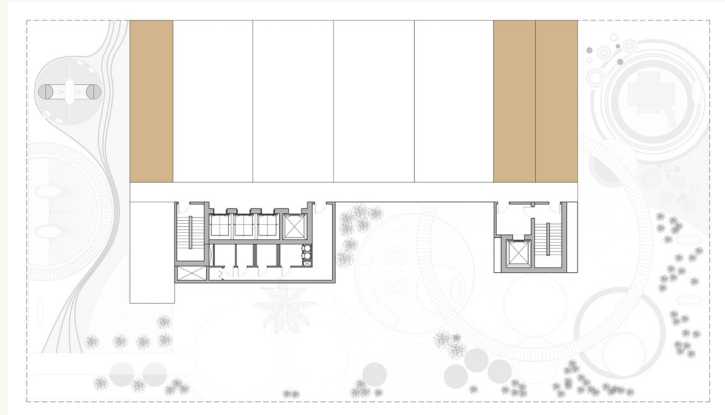
Suite Area: 338 sq.ft

Terrace Area: 59 sq.ft

Total Area: 397 sq.ft



Studio Type 1



Studio Apartment

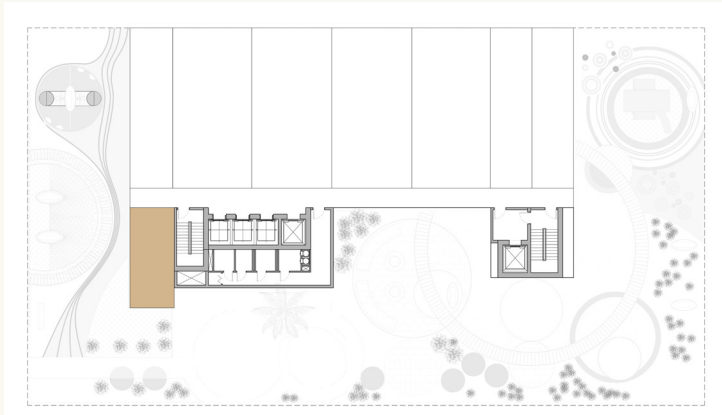
Suite Area: 333 sq.ft

Terrace Area: 256 sq.ft

Total Area: 589 sq.ft



Studio Type 2



Studio Apartment

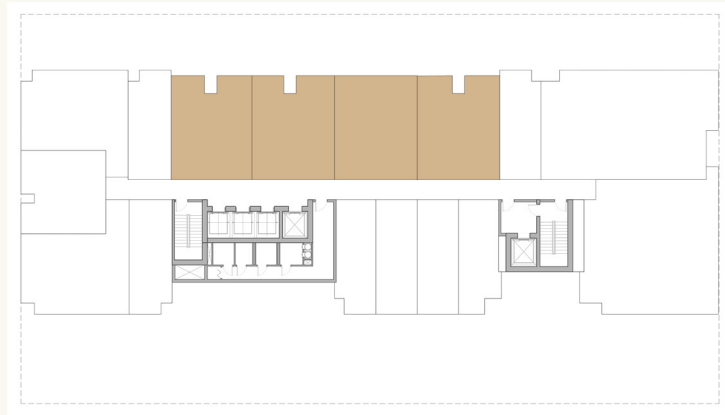
Suite Area: 358 sq.ft

Terrace Area: -

Total Area: 358 sq.ft



Studio Type 3



One Bedroom Apartment

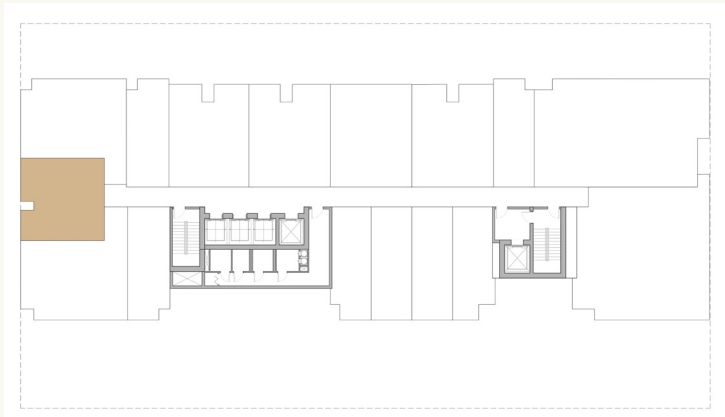
Suite Area: 582 sq.ft

Terrace Area: 113 sq.ft

Total Area: 696 sq.ft



One Bedroom Type 1



One Bedroom Apartment

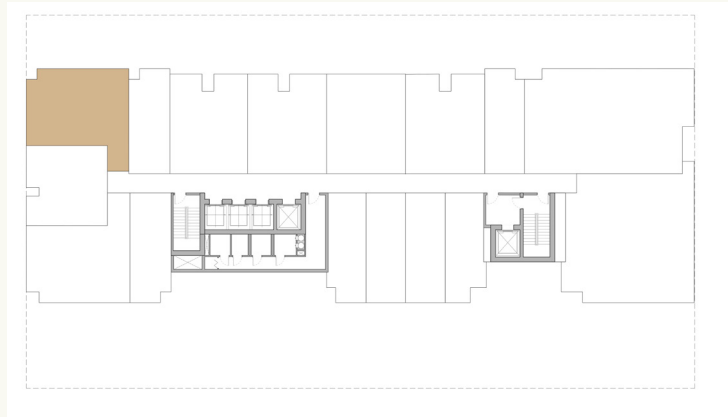
Suite Area: 537 sq.ft

Terrace Area: 37 sq.ft

Total Area: 575 sq.ft



One Bedroom Type 2



One Bedroom Apartment

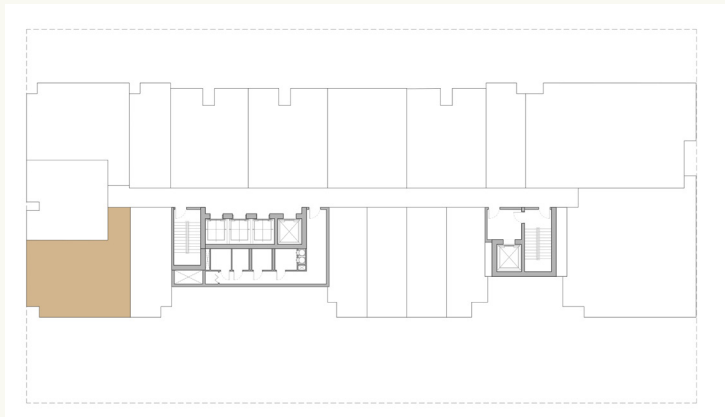
Suite Area: 661 sq.ft

Terrace Area: 101 sq.ft

Total Area: 762 sq.ft



One Bedroom Type 3



One Bedroom Apartment

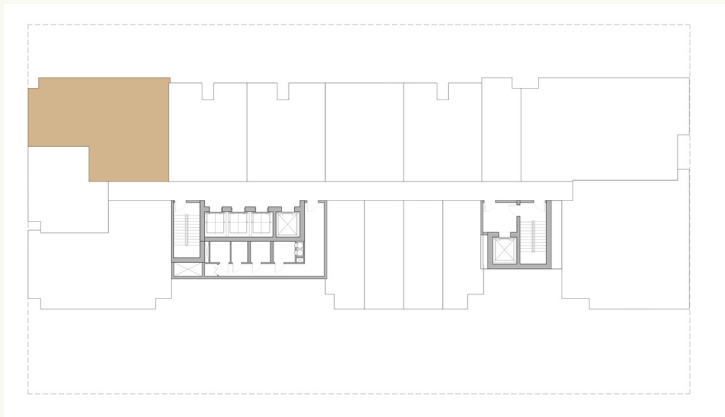
Suite Area: 700 sq.ft

Terrace Area: 97 sq.ft

Total Area: 797 sq.ft



One Bedroom Type 4



One Bedroom Apartment

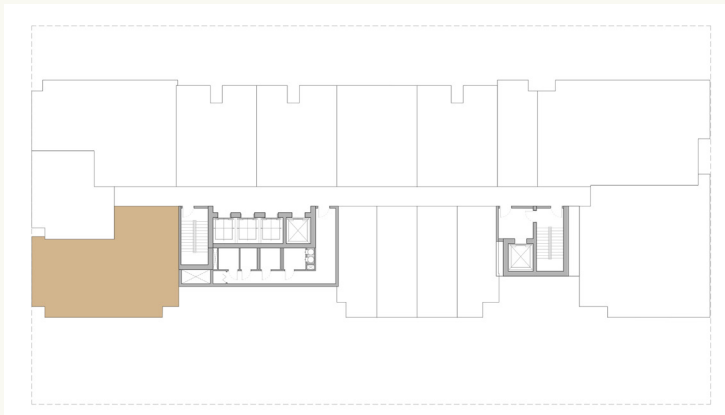
Suite Area: 583 sq.ft

Terrace Area: 567 sq.ft

Total Area: 1151 sq.ft



One Bedroom Type 5



One Bedroom Apartment

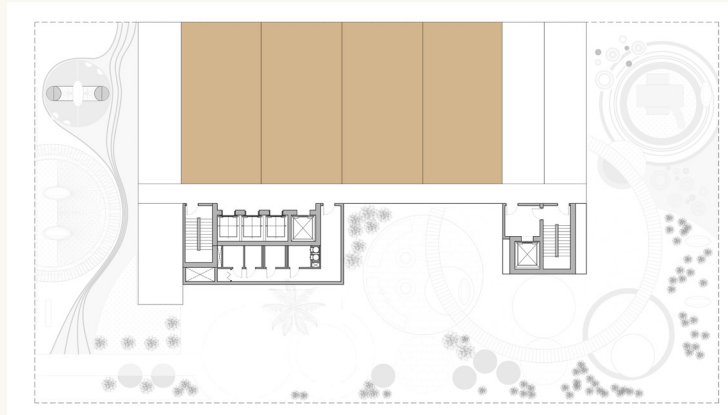
Suite Area: 713 sq.ft

Terrace Area: 464 sq.ft

Total Area: 1178 sq.ft



One Bedroom Type 6



One Bedroom Apartment

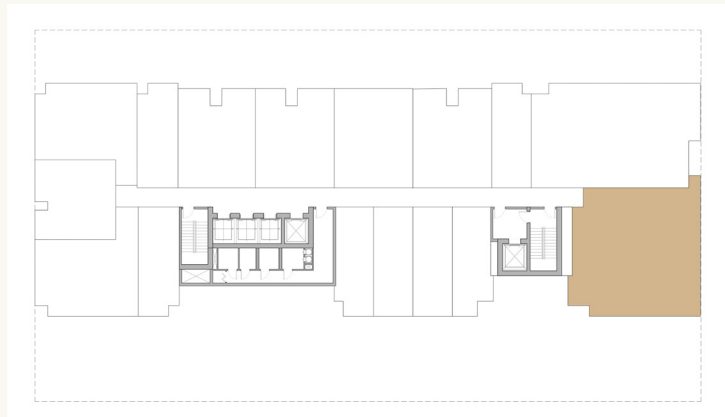
Suite Area: 585 sqft

Terrace Area: 566 sqft

Total Area: 1151 sqft



One Bedroom Type 7



Two Bedroom Apartment

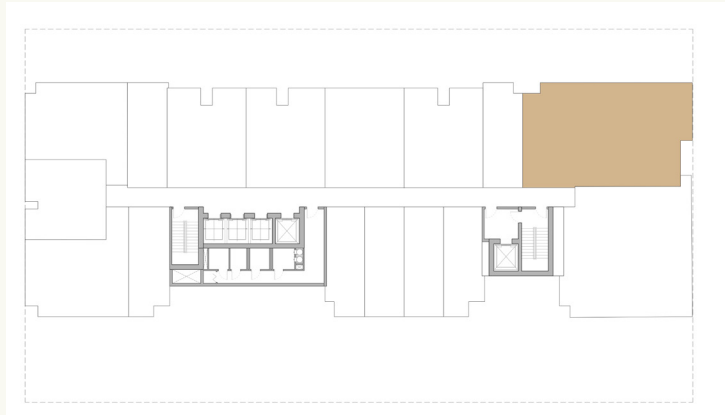
Suite Area: 1264 sq.ft

Terrace Area: 279 sq.ft

Total Area: 1543 sq.ft



Two Bedroom Type 1



Two Bedroom Apartment

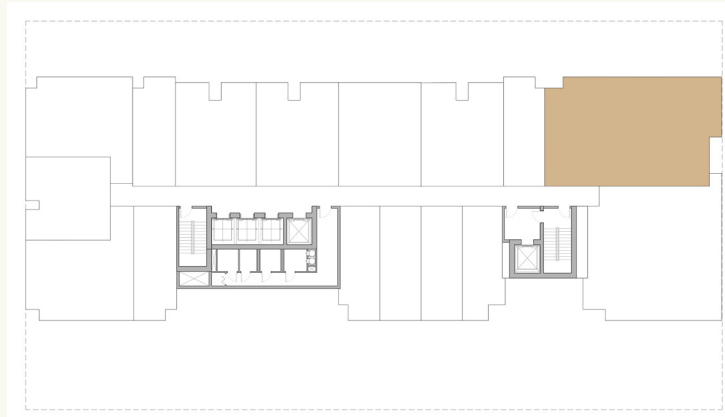
Suite Area: 1013 sq.ft

Terrace Area: 479 sq.ft

Total Area: 1493 sq.ft



Two Bedroom Type 2



Three Bedroom Apartment

Suite Area: 1333 sq.ft

Terrace Area: 220 sq.ft

Total Area: 1554 sq.ft



Three Bedroom Type 1



Disclaimer: All pictures, plans, layouts, data and details included in this floor plans are indicative only and may change at any time upto their final "as built" status in accordance with the final designs of the project, regulatory approvals and planning permissions.