



SNOW
WHITE
VILLAS

StoneGate

SNOW WHITE VILLAS

ABOUT THE COMPLEX

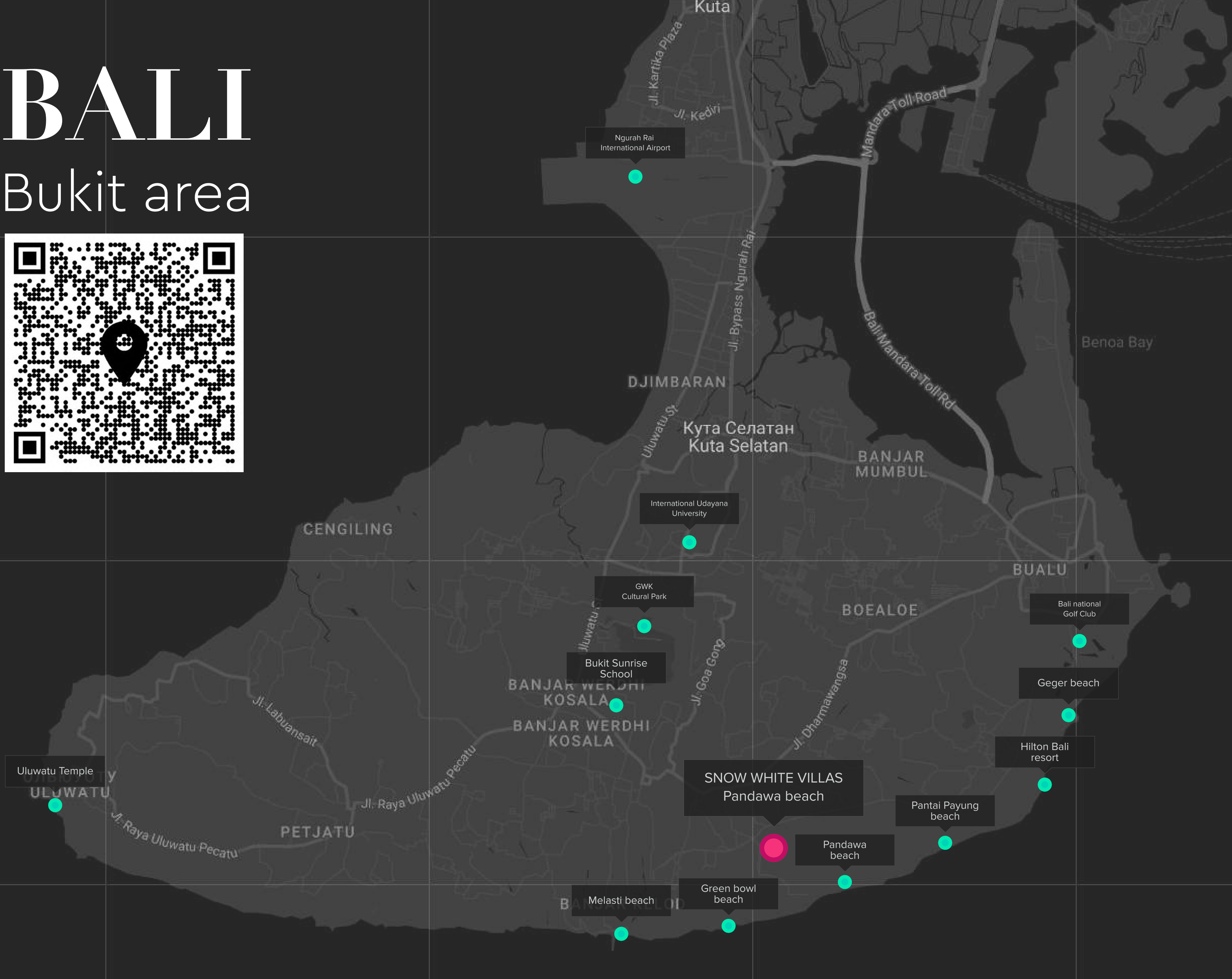
Snow White Villas is an exquisite and secure complex of premium villas offering ocean views, convenient parking, and private pools for luxurious living, smart investment or indulgent holidays. Snow White Villas offers a remarkable experience in Bali's finest and most serene location Pandawa beach.



2024 / Bali

BALI

Bukit area



PRIME LOCATION



The complex is situated in the Bukit area, adjacent to the renowned G20 summit Golden resort area in Nusa Dua and near 7 popular white-sand beaches:

This prime location also offers guests easy access to a range of prestigious amenities, making it an ideal choice for a memorable and luxurious stay in Bali.

- PANDAWA BEACH
- NUSA DUA BEACH
- MELASTI BEACH
- GEGER BEACH
- GREEN BOWL BEACH
- TIMBIS BEACH
- PANTAI PAYUNG BEACH

WHITE VILLAS
MONSNO

ONLY 2 MINUTES

Located adjacent to the new road, our villa complex provides the advantage of being a mere 2-minute drive away from the breathtaking Pandawa Beach

SECRET BEACH PANDAWA

Pandawa Beach, located on the island of Bali around 3 km from Nusa dua G20 Golden resort area, is a true gem of tropical paradise. Also called a «secret beach» due to its hidden position behind limestone cliffs



WHAT IS NEARBY?

Bali International Airport – 25 min

Pepito supermakret – 6 min

Bali collection Shopping center – 15 min

Balicopter Heliport – 3 min

Uluwatu temple – 25 min

Udayana university – 15 min

GWK Cultural park – 20 min

BIMC Nusa dua Hospital – 15 min

Hilton Bali resort – 10 min

Bali national Golf Club – 5 min

Bukit Sunrise International School and kindergarten – 9 min

Royal Rancheros Stables – 2 min

Paragliding – 2 min

Roosterfish Beach Club – 10min



WHITE VILLAS
MONSNO

2024 / Bali

The best place for sunbathing, leisurely walks, and enjoying ocean views. It also offers various water activities like surfing and paragliding.



Convenient facilities include parking facilities, clean restrooms and changing rooms, a variety of cafes and restaurants, water sports rentals, shops and lifeguards for beach safety.

IDEAL LOCATION

Recently completed in January 2023, Bali government has introduced a brand–new direct road that conveniently links the Snow White Villas complex, Pandawa beach, Nusa Dua, and the International Airport, all within a 25–minute drive.



SNOW WHITE VILLAS

SNOW WHITE VILLAS



THE COMPLEX FEATURES:

- 7 THREE BEDROOM VILLAS
- 2 FOUR BEDROOM VILLAS
- 1 SIX BEDROOM VILLA

MASTER PLAN

WHITE VILLAGES
MONS



2024 / Bali

ADDITIONAL FEATURES

OWNERS AND GUESTS OF THE VILLAS GET FULL ACCESS

To all the facilities and services of the future
MEDUZA spa centre on special terms. The
MEDUZA spa centre will be located right next to
Snow white villa complex

SECURITY

The entire complex has security personnel and CCTV cameras, monitored 24hr 7 days a week.



EMERGENCY

In case of an emergency, villa guests and owners can rely on our free ambulance service, with safe transportation to the nearest hospital.

A modern bedroom interior featuring a large, textured wall with a wavy, organic pattern. A bed with a dark, tufted headboard and matching footboard is positioned in the center, flanked by two light-colored bedside tables. A glass wardrobe with a black frame is visible on the left, containing hanging clothes and shoes. The room is lit by three large, white, spherical pendant lights hanging from the ceiling. The floor is covered with a dark, textured rug. The overall atmosphere is sophisticated and minimalist.

EXCELLENT DESIGN

INTERIOR MATERIALS

01 TEXTILE

The aesthetics of light gray tones in textiles creating a sense of balance and harmony in the space.

02 FEATURE WALLS

Made from natural stone, an unique material that will bring elegance, sophistication, and a distinctive charm to your interior.

03 FLOOR

Natural stone for floors is a material created by nature, and each stone has its own individuality and uniqueness.

04 INTERIOR

The details in the interior of japandi style create a unique atmosphere and help to relax, and enjoy the simplicity and beauty of nature.



BEDROOM

A bedroom in the japandi style, is the perfect place for relaxation, where you can forget about the stresses of everyday life. Simple lines and geometric shapes, minimalist decor, and low furniture items create a space where cleanliness and serenity reign above all.





KITCHEN

Kitchen blends Japanese and Scandinavian design, featuring clean lines, natural materials, a minimalist color palette, functional layout, uncluttered surfaces, and a balance between modern and traditional elements





BATHROOM

Clean lines, natural materials, and functionality are the key characteristics of a japandi bathroom. Such a bathroom will help you relax and enjoy your water rituals every day

RETREAT AREA

An outdoor relaxation area is the perfect place to enjoy nature and tranquility. It can be created using elements such as stones, water, and plants, allowing you to feel a sense of unity with nature and draw energy and inspiration from it.



EXTERIOR

With its emphasis on clean lines and minimalist aesthetics, our facade style creates an atmosphere of tranquility and uncluttered elegance





ROOFTOP

Another relaxation area with ocean view and sunset.
This is also a perfect place for BBQ with friends and family
The terrace has a special protection against
rain and direct sunlight, which can be easily transformed.





**3 BEDROOM
VILLA
TYPE 1**

3 BEDROOM VILLA

25 + 25 YEARS

LAND LEASE

150–180 M2

LAND AREA

193 M2

VILLA AREA

PARKING SPACE FOR 1 CAR AND 2 BIKES

GROUND FLOOR

WHITE VILLAS
MONSIEUR SNOW



- Kitchen
- Living room
- Bathroom
- Laundry
- Terrace
- Pool
- Parking area

FIRST FLOOR

WHITE VILLAS
MONSIEUR SNOW

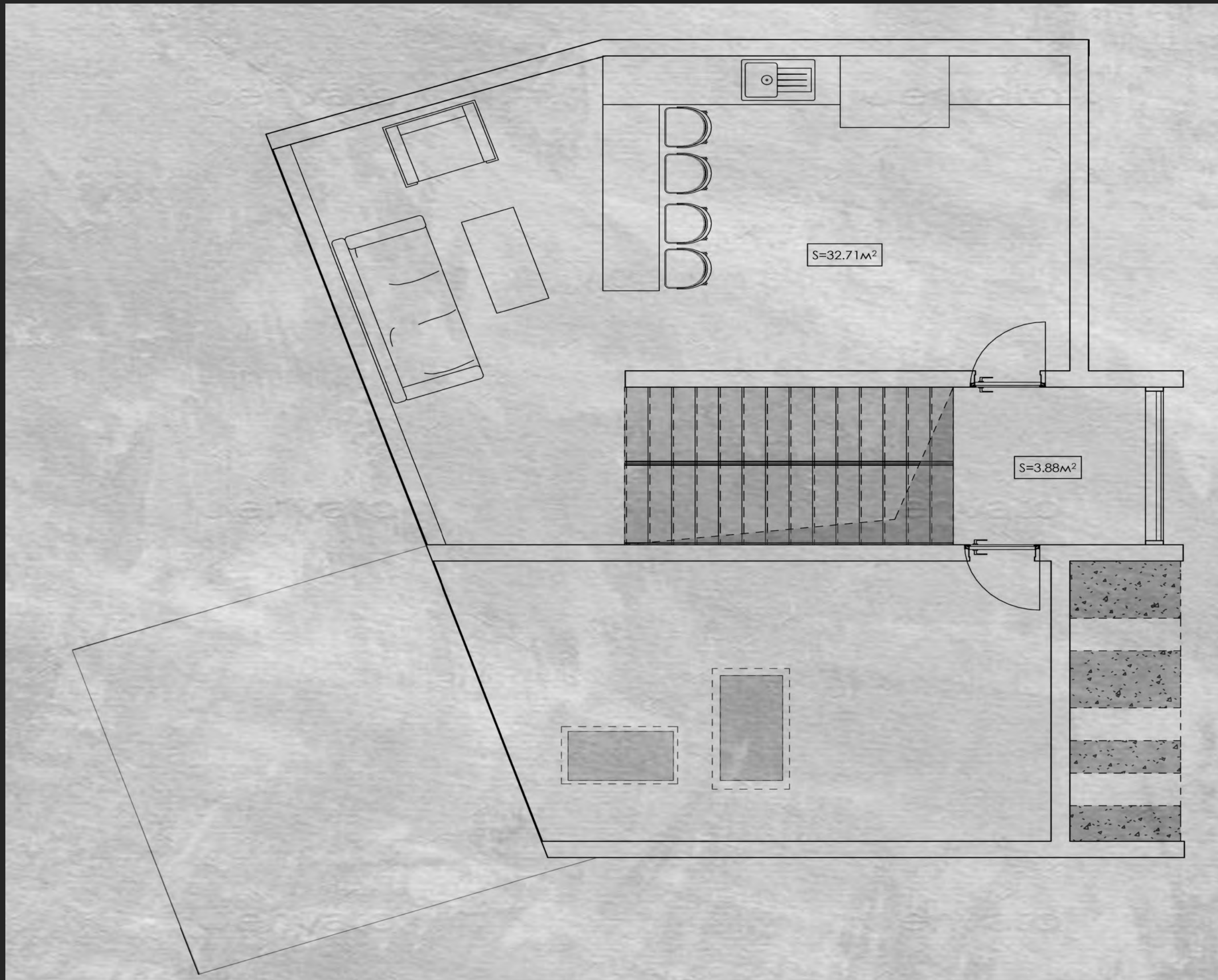


- 3 bedrooms
- 2 bathrooms
- 2 wardrobes
- Balcony

ROOFTOP

Terrace overlooking the ocean and sunset

WHITE VILLAS
MONSIEUR SNOW



- Open style rooftop
- Gas BBQ
- Kitchenette



EXTERIOR
DESIGN



RETREAT AREA

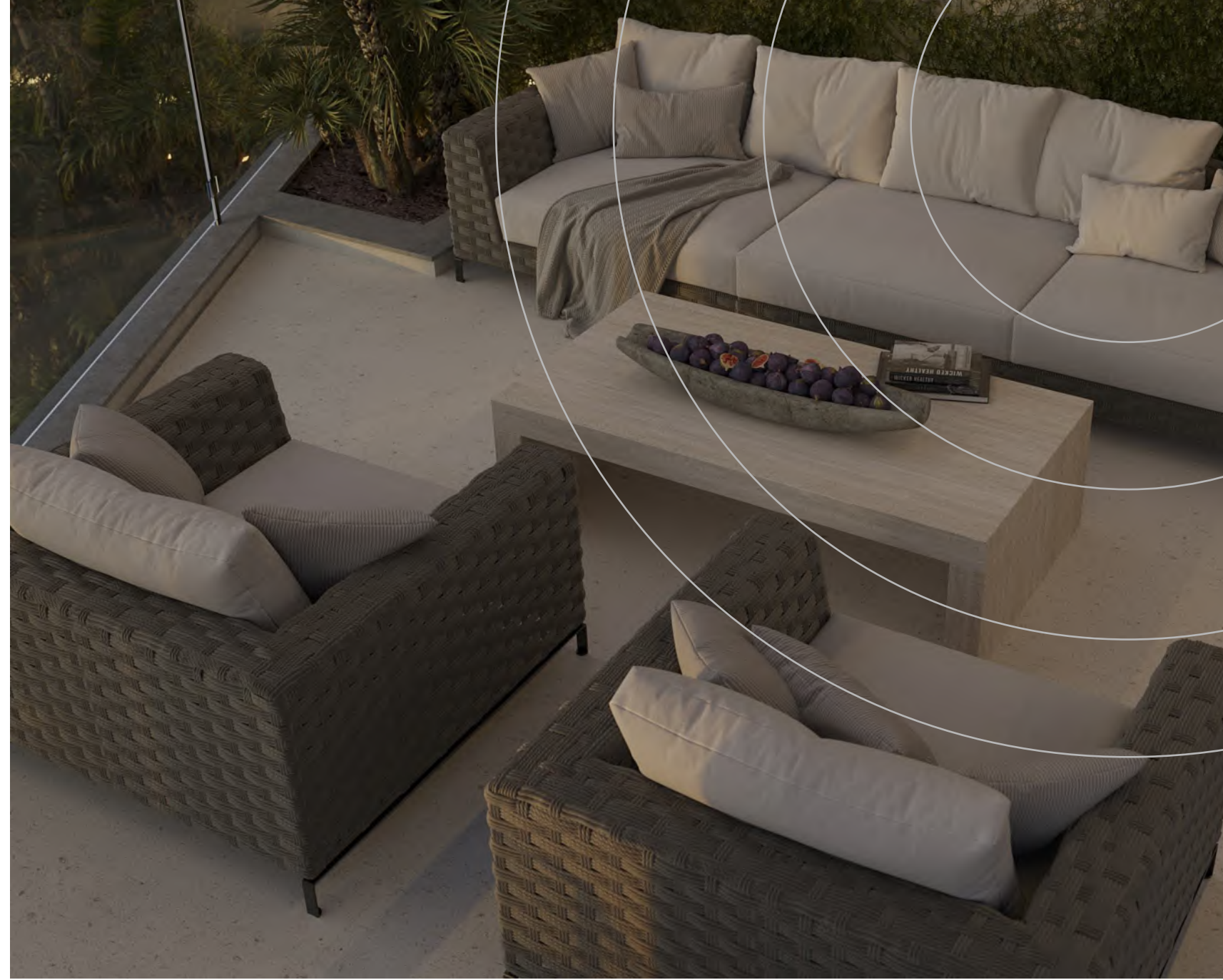




HITEN VIKAS
ARCHITECTS
MOODS

ROOFTOP







INTERIOR DESIGN









3 BEDROOM
VILLA
TYPE 2

(000)
ANH-7852

3 BEDROOM VILLA

25 + 25 YEARS

LAND LEASE

220–242 M2

LAND AREA

274 M2

VILLA AREA

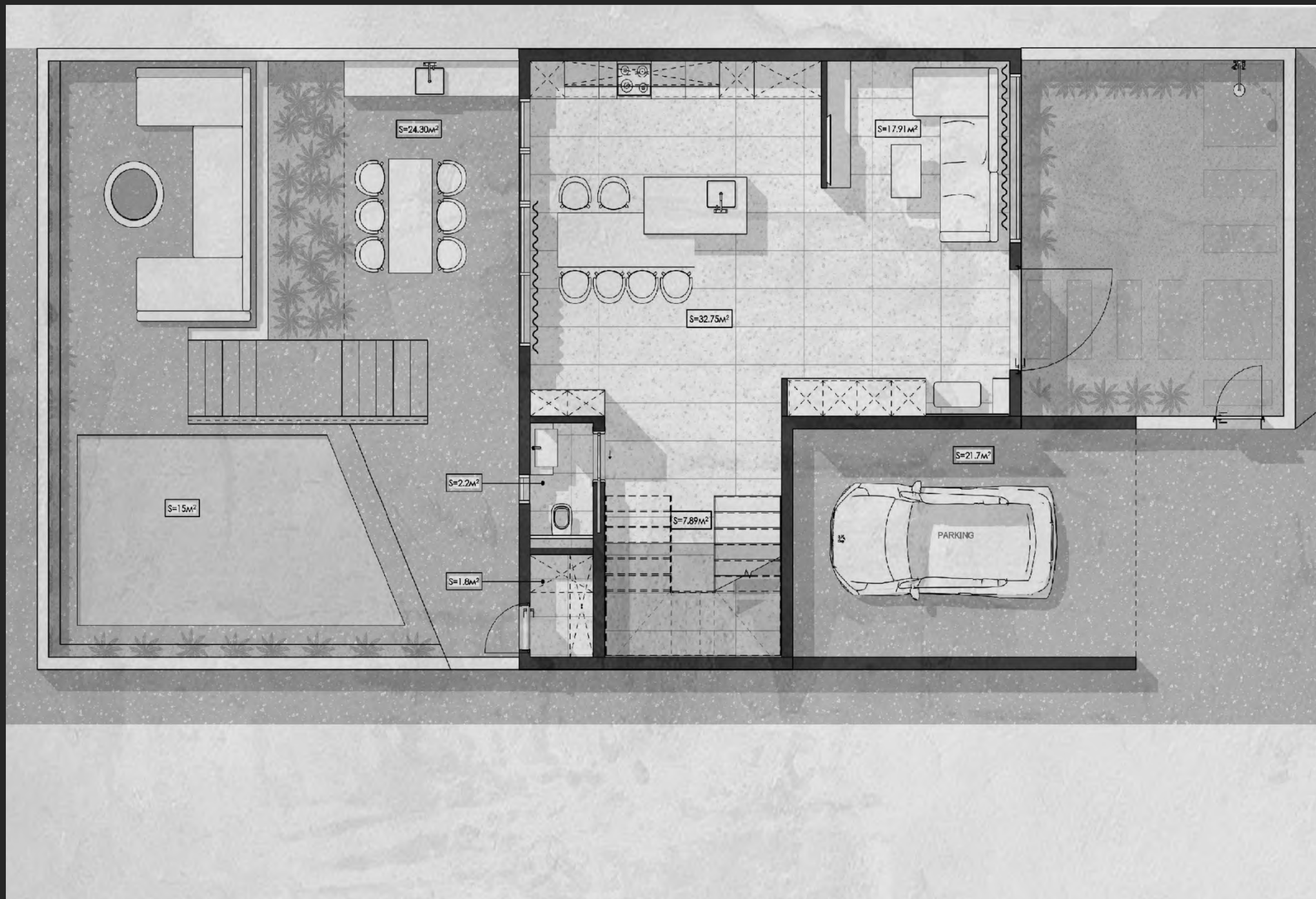
PARKING SPACE FOR 1 CAR AND 2 BIKES

WHITE M C

2024 / Bali

GROUND FLOOR

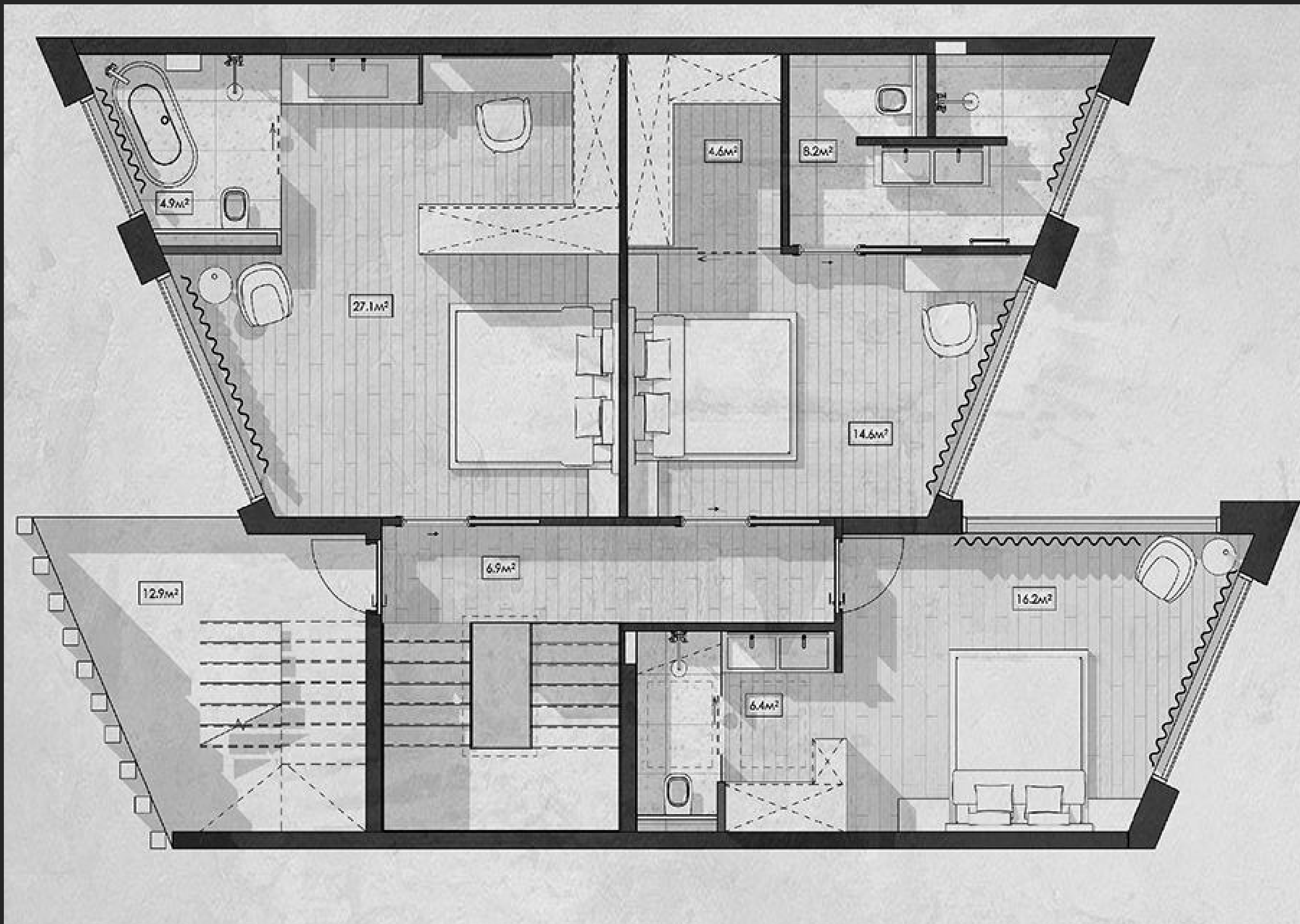
WHITE VILLAS
MONSIEUR SNOW



- Kitchen
- Living room
- Bathroom
- Laundry
- Terrace
- Fire pit
- Pool
- Parking area

FIRST FLOOR

WHITE VILLAS
MONSIEUR SNOW

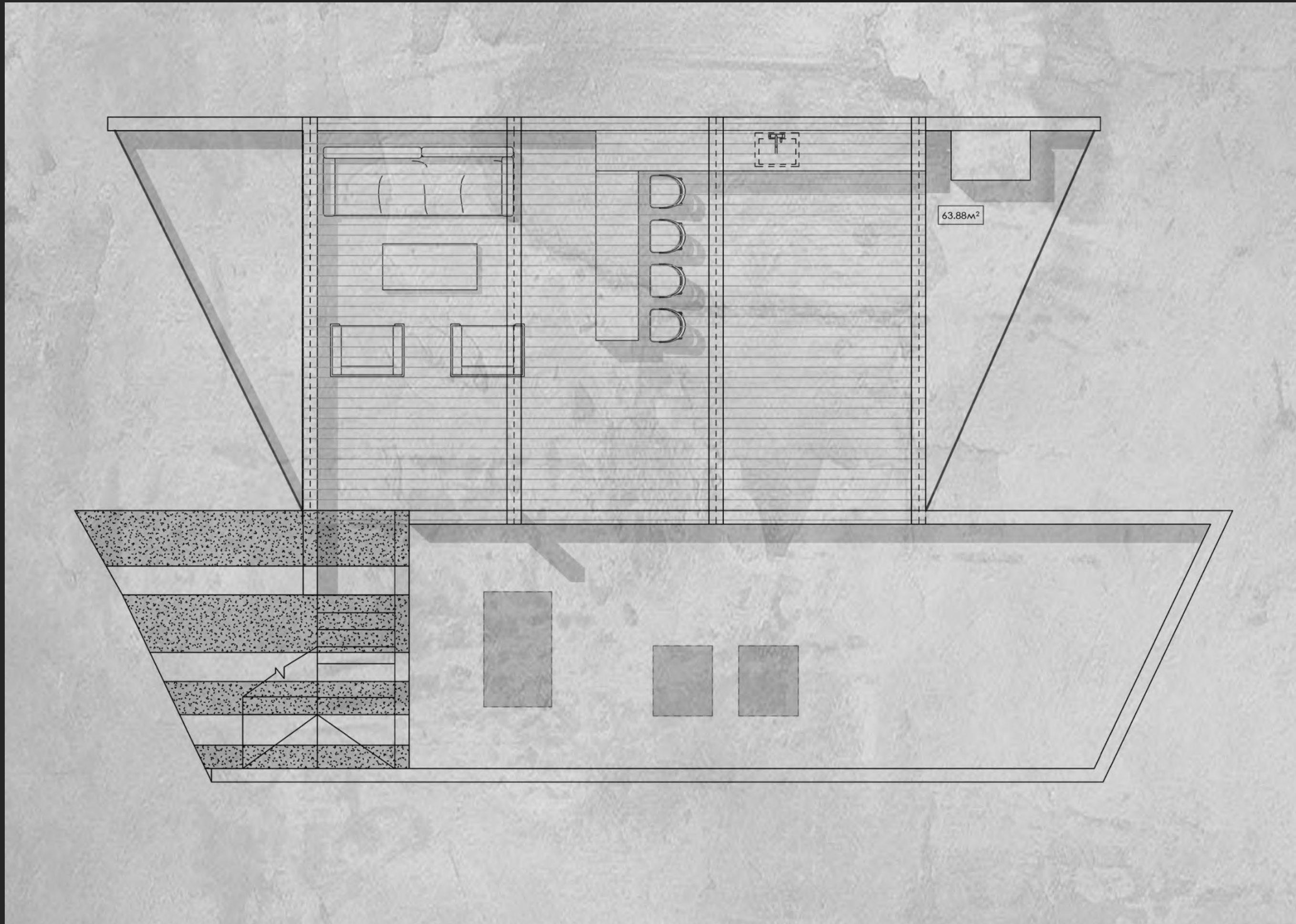


- 3 bedrooms
- 3 bathrooms
- 3 wardrobes
- Balcony

ROOFTOP

Terrace overlooking the ocean and sunset

WHITE VILLAS
MONSIEUR SNOW



- Open style rooftop
- Gas BBQ
- Kitchenette

A photograph of a modern, two-story house at dusk. The house has a light-colored facade and large windows. A balcony with a glass railing and a slatted roof is visible on the upper level. Palm trees are in the foreground, and their shadows are cast on the house's wall. The sky is a deep blue. The text "EXTERIOR DESIGN" is overlaid in the center in a white, serif font.

EXTERIOR DESIGN





RETREAT AREA



A high-angle photograph of a rooftop patio. The patio is furnished with a large, L-shaped sectional sofa with light-colored cushions and a dark, woven frame. A light-colored blanket is draped over the left side of the sofa. In the center of the patio is a large, rectangular, light-colored wooden coffee table with a bowl of fruit and a book on it. Two matching armchairs with light-colored cushions and dark woven frames are positioned in the foreground. The patio is surrounded by lush greenery, including a large palm tree and various shrubs. The ground is a light-colored, textured surface. The word "ROOFTOP" is overlaid in large, white, serif capital letters across the center of the image.

ROOFTOP





INTERIOR DESIGN





