



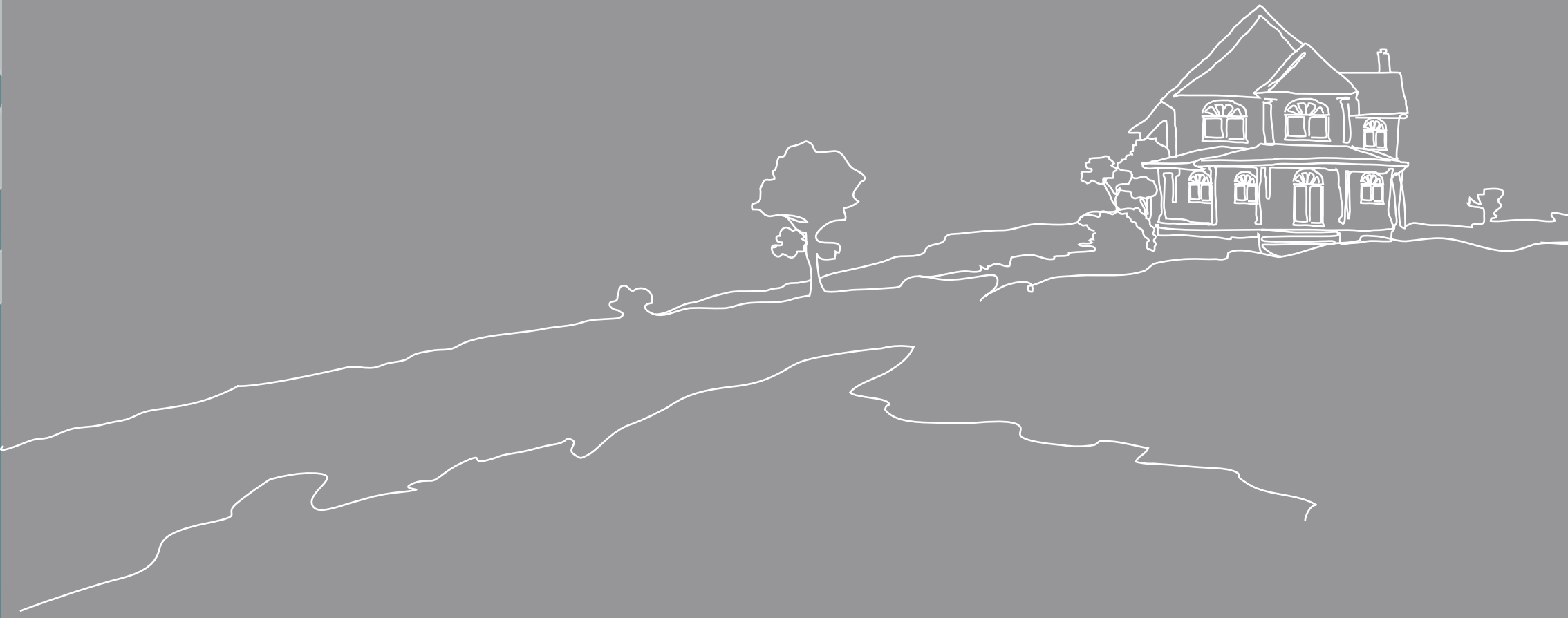
برج العامرة
AL AAMRA TOWER



برج العاصرة
AL AAMRA TOWER



إلهام يتجدد كل يوم
Inspiration every day



د. فيصل علي موسى
رئيس مجلس إدارة فام القابضة

Dr. Faisal Ali Mousa

Chairman, FAM Holding

FAM Holding is a conglomerate of business solutions across a number of industries having diversified investments in the region. Since our founding in early 2006, we have been moving forward aggressively on many fronts to capitalize on solid growth opportunities, to improve our operating efficiency, to expand our global presence and to sharpen our business portfolio's focus on our core businesses.

FAM Holding, with a rich heritage, strong convictions and fair business principles is ideally positioned to leverage its strengths and make optimum use of resources to become one of the most sought business houses in the region. The long-term aim is to create a broad range of innovative industries that will generate a steady flow of new ideas and technologies and advances.

Firmly networked into the global economy, these industries will transform UAEs economic role and will contribute to the development of national and regional economies.

As a part of global expansion strategy we are rapidly growing with offices in different parts of the MENA region and in Europe. Our transparent way of working helps us to establish a strong bond with our business partners & investors, and carve a niche for ourselves as one of the best in the region.

Take the first step towards developing positive relationships by allowing us to share our experience and expertise in the art of doing business.



معايير جديدة للجودة والتصميم

بعد النجاح الذي حققته مجموعة فام القابضة بالتعاون مع المكتب الهندسي سيجما آرت في مشروع سمارت تاور ومع البدء في تنفيذ المشروع تم الإعلان عن مشروع برج العمارة الذي سيظهر جميع العملاء من حيث توافر كافة سبل رفاهية الحياة.

ترسم تصاميم المشروع معياراً جديداً من المداخل الفاخرة وروعة المظهر الخارجي وصولاً إلى التصميم الداخلي، برج العمارة تستمتع فيه بعالمك الخاص بعيداً عن صخب الحياة فهو يقدم مفهوماً جديداً من العيش الفاخر حيث يتمتع البرج بواجهات زجاجية بطولها لتجعلها تطل على لوحة خلابة للمدينة في الأفق.

تظهر الإمكانيات السكنية التي صممت بمساحات متنوعة وتشطيبات مبتكرة لأسلوب حياة عصرية ذات طابع فريد من نوعه يتميز بالهدوء والخصوصية.

برج العمارة هو السكن الأفضل للحياة بطريقة إيجابية ممتعة وبناء أسرة مثالية.

New Standards Of Design And Quality Of Living

The success story created by the strategic alliance between FAM holding and Sigma Art Engineering Consultants in SMART Tower has inspired the creation of Al Aamra Tower, Al Aamra Tower is a new Landmark that will fascinate all the clients and investors with the luxuries and life style proposed in this project.

The Design of Al Aamra Tower project aims to set new standards in Architectural and interior design starting from the façade and external shape of the project to the luxury interior.

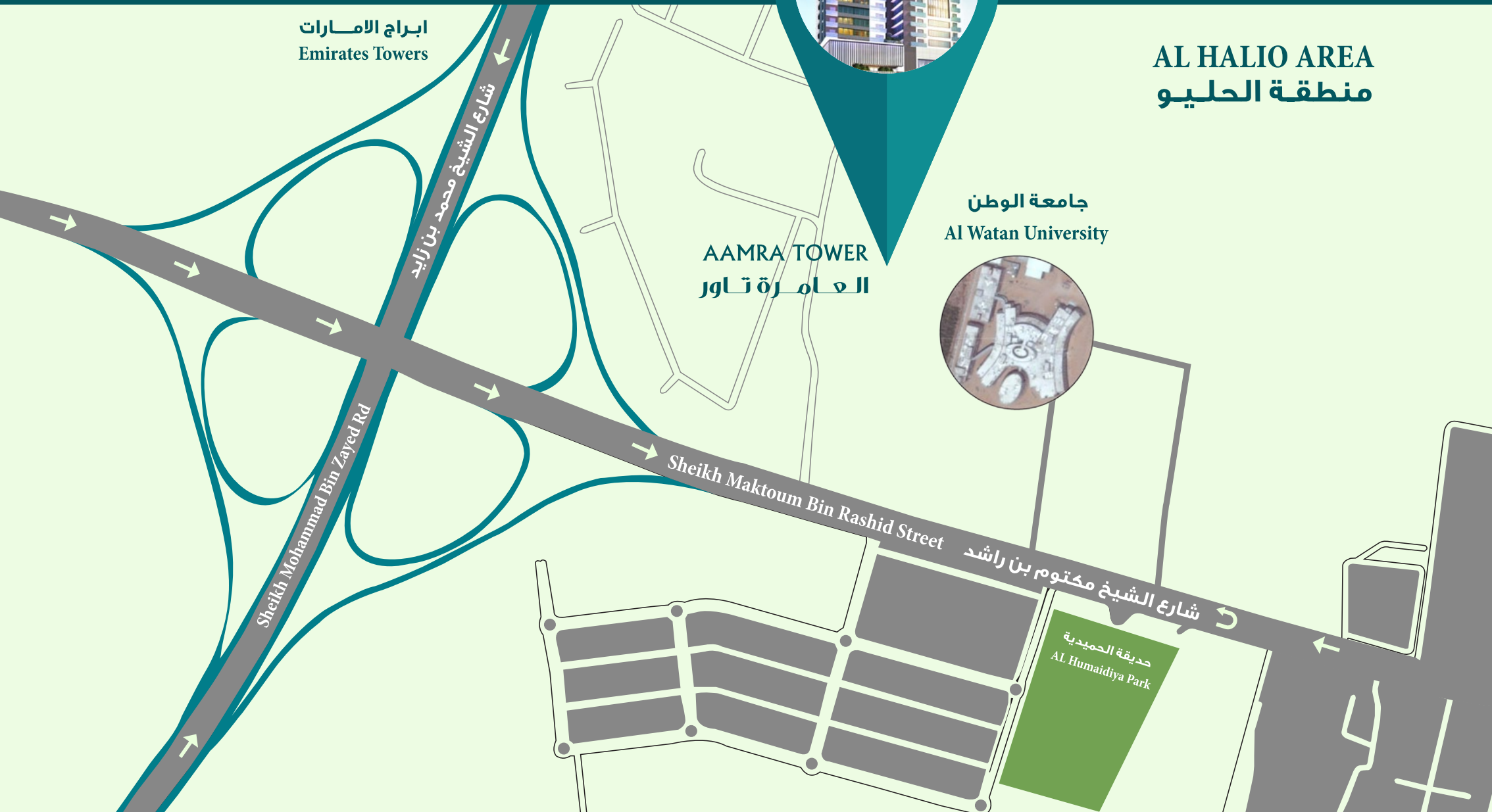
Al Aamra Tower, a luxury to indulge in away from the stress of the metropolitan life, the fascinating views of the city of Ajman through the full height glass façade will tickle your sensations, the variety of spaces with its creative finishing for a unique modern life featuring luxury comfort and privacy will simply make it a world of your own.

Al Aamra Tower, The best place to call home and to build a happy family in a relaxing, positive, and enjoyable environment.

LOCATION

دقيقة واحدة من جامعة الوطن
١٠ دقائق من كورنيش عجمان
٢٥ دقيقة من مطار الشارقة الدولي
٤٠ دقيقة من مطار دبي الدولي
٤٥ دقيقة من برج خليفة

Aminutes from Al- Watan University
10 minutes from Ajman Corniche
25 minutes from International Sharjah Airport
40 minutes from International Dubai Airport
45 minutes from Khalifa Tower



برج العامة
AL AAMRA TOWER

موقع استراتيجي

يتباهى مشروع برج العامره السكني بأعلى المعايير , حيث أن المشروع يقع بالقرب من جامعة الوطن ومقابل حديقة الحميدية , ويضم محلات تجارية فاخرة وشقق سكنية تحيط بها أرقى المطاعم والمقاهي في المدينة وستجدون كل ما تحتاجون إليه من وسائل الراحة والترفيه إلى الخدمات المصرفية والتجارية على مسافة قريبة .

STRATEGIC LOCATION

al aamra tower is a residential development of the highest standard , that project is located near Al- Watan University and oppiste of Al- Hamediah garden , offering luxurious boutiques and residential apartments , surrounded by the city's finest restaurants and cafes . Everything you need is within walking distance : from leisure to entertainment, finance and business.



HOME IS WHERE THE HEART IS

Love the life that a well-planned home
can give you and your family.

Every detail of an Al Aamra Tower apartment
has been considered, from the fittings in the
kitchens to the fixtures in the bathrooms,
and advanced technical solutions with easy
operation for lighting and electrics, to make
sure that your day to day feels that much
easier.

We build beyond imagination,
ambition is our everyday drive to success

All you have left to do is just enjoy it.



يكون المنزل حيث يكون القلب

سوف تحبون الحياة الرائعة التي تم التخطيط
لها من أجل متعة جميع أفراد العائلة.

فقد تم الاعتناء بأدق التفاصيل في شقق
'برج العامرة' ابتداءً من تصاميم المطبخ ومروراً
بلوازم الحمامات والمميزات التكنولوجية
الحديثة وانتهاءً بسهولة التحكم بالإضاءة
والأجهزة الكهربائية، كل ذلك في سبيل توفير
حياة أكثر سهولة.

نحن نبني ما هو أبعد من الخيال - واليوم وكل يوم يقودنا الطموح نحو النجاح

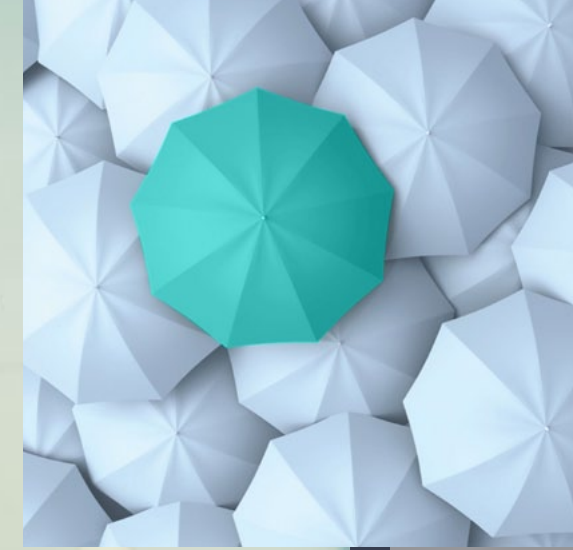
كلّ ما عليكم فعله هو الاستمتاع.



اكتشف الفرق

برج العامرة هو أول برج سكني متكامل الخدمات.

إننا نتولى التطوير العقاري بكفاءة، وتحسين الصورة العامة للبناء وتحسين دورة حياته. كما أننا متمرسون على أحدث التقنيات ودمج النظم المبتكرة ضمن العمليات التي نقوم بها؛ نتيجة لذلك، نحن نتمتع بكافة الإمكانيات التي تتيح لنا المحافظة على استمرارية الأعمال بنجاح.



EXPERIENCE THE DIFFERENCE

Al Aamra Tower is the first full service residential tower.

We efficiently manage property development, enhance a building's overall image and improve its life cycle. We are also attuned to the latest technologies and integrate innovative systems into our processes. As a result, we are empowered to successfully deliver business continuity between Property Management and Facilities Management.





تصميم برج العامرة

انمط حياة فريدة

برج العامرة مرادف للتصميم الفخم الذي يشمل جميع الأقسام الداخلية .
يتميز برج العامرة بتصميم داخلي فريد حيث تمتزج كافة العناصر بعناية لخلق مساحات داخلية تتسم بالفخامة والترف اللذين يتناغمان مع تصاميم ذات الطراز المميز .

فجج برج العامرة راحتك مسئوليتنا



AL AAMRA TOWER

DESIGN FOR UNIQUE LIFE STYLE

Aamra Tower is synonymous with luxury design right down to the interiors .
aamra tower is a building with unique interior design.
A place where all elements delicately merge to create a lavish and sumptuous living interior that seeks to create design that fit with recognizable style .

In Alaamra tower Your Convenience Our Responsibility



Tower Services

- Cleaning Services
- Concierge
- Opening Hyper Market (24 Hours)
- Gym Hall (Men – Women)
- Swimming Pool
- Coffee Shop
- Restaurant
- Laundry Services
- Children Garden
- Baby Sitting
- First Aid Services
- Home Automation System
- Safe Guard (24 Hours)
- Cctv

خدمات البرج

- خدمات تنظيف
- خدمات الكونسيرج
- هايبر ماركت مفتوح (٢٤ ساعة)
- صالة رياضية (رجال - نساء)
- حمام سباحة
- مقهى
- مطعم
- خدمات تنظيف الملابس
- حديقة أطفال
- رعاية أطفال
- خدمات الإسعافات الأولية
- نظام المراقبة الذكية للبيوت
- نظام حراسة (٢٤ ساعة)
- نظام مراقبة بالكاميرات



الطريق الى غايتك Gateway To Your Destination



مدينة عجمان

هي قلب الإمارة النابض وفيها مقر الحاكم والدوائر الحكومية والشركات والمصارف والمصانع يطل ميناؤها ومنفذها البحري على ساحل الخليج العربي. وبفضل موقعها الاستراتيجي وتوسطها لإمارات الدولة والإنجازات التي تحققت في المجال الاقتصادي وتطور البنية التحتية فقد أصبحت المدينة مركز جذب للمستثمرين ورأس المال مما أهلها لقيام نهضة عمرانية وحضارية تتجلى في مبانيها الحديثة والتي تجمع بين الحداثة والتراث.

Ajman City

Is the heart of the emirate and the headquarters of the ruling government departments, companies, banks and factories overlooks the harbor and sea outlet on the Gulf Coast. Thanks to its strategic location right in the middle of the UAE and the achievements in the economic sphere and the development of infrastructure has the city became the center of attraction for investors and capital qualifying for the upswing and civilized reflected in modern buildings which combine modernity and heritage.



SPACE DESIGN

Long before an architect 's pencil sets about on paper or cranes slowly move to take charge of a construction site , there is a vision that sets

into motion virtual lines , creating a space just as you imagined before buying a home . We know how much it means to you to have a home that is crafted to your heart's desire .

Before everything else , we focused our efforts on understanding the space design demands of the modern consumer . Just because you were not there as this exclusive dream project was taking shape , doesn 't mean your desire were left unmet .

After much deliberation , studies and consultation we arrived at a design that is going to be simply finales to you.



LUXURY

Where does it start and Where does it end?

There is no single answer , what we know is it vaguely starts with how we imagine things and how we make that imagination come to life At the aamra tower we have pushed the limits of excellence a little further than contemporary standard .

That is why what we offer is not a place with massifs of expensive stuff thrown in .

But a place that reflects your individuality from the way water flows from a faucet to the sound of feet meeting the floor as you walk around your apartment , every detail is taken care of and then signed -off with a luxurious finish.

Nothing is overdone yet no aspect of living is left undone .

From the beautiful mural ceilings in the corridors to the high windows in the living spaces that reduce the visual barriers , life is lived just as should be , in complete freedom.



مساحة التصميم

قبل قيام المهندس المعماري برسم اي خط علي ورقه او قيام المعدات الانشائية بالعمل في الموقع يكون هناك رؤيه.

بطريقه افتراضيه نقوم بخلق المساحات التي تتخيلها قبل شراء المنزل. ونحن نعلم كم يعني لك أن تمتلك المنزل الذي تم إنشاؤه بناء على ما يشتهي قلبك.

قبل أي شي آخر. نحن نركز مجهوداتنا على فهم الفراغات التصميمية ومتطلبات المستهلك الحديثة أن حلمك الحصري سيأخذ شكله معنا بتلبية كل تطلعاتك.

وبعد الكثير من المداولات والدراسات والاستشارات توصلنا إلى أن التصميم الذي صنعناه من أجلك هو الحل الأمثل والنهائي لديكم.



الفخامة عنوان . برج العامرة السكنية

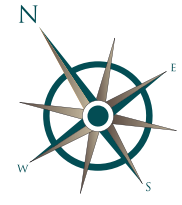
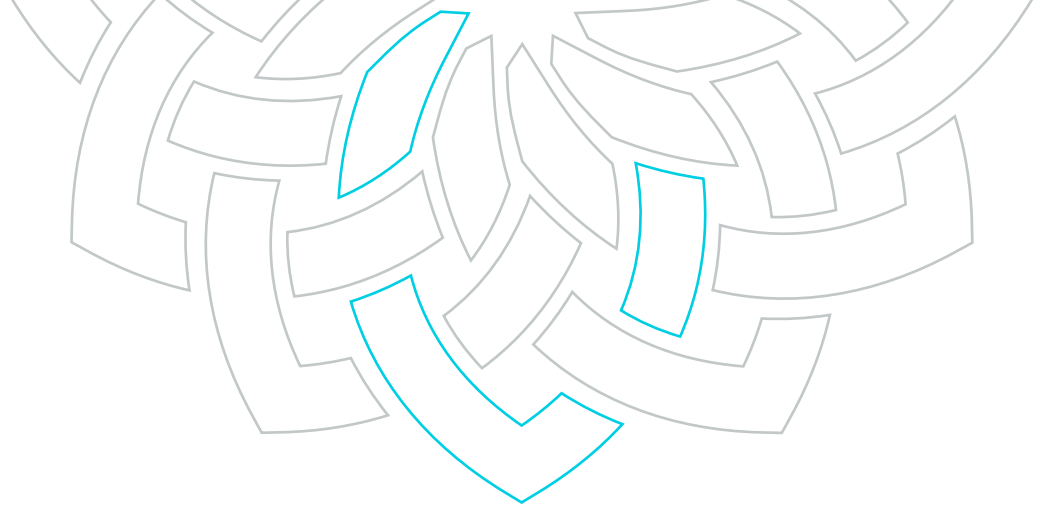
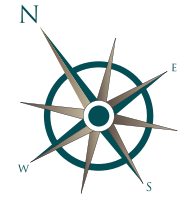
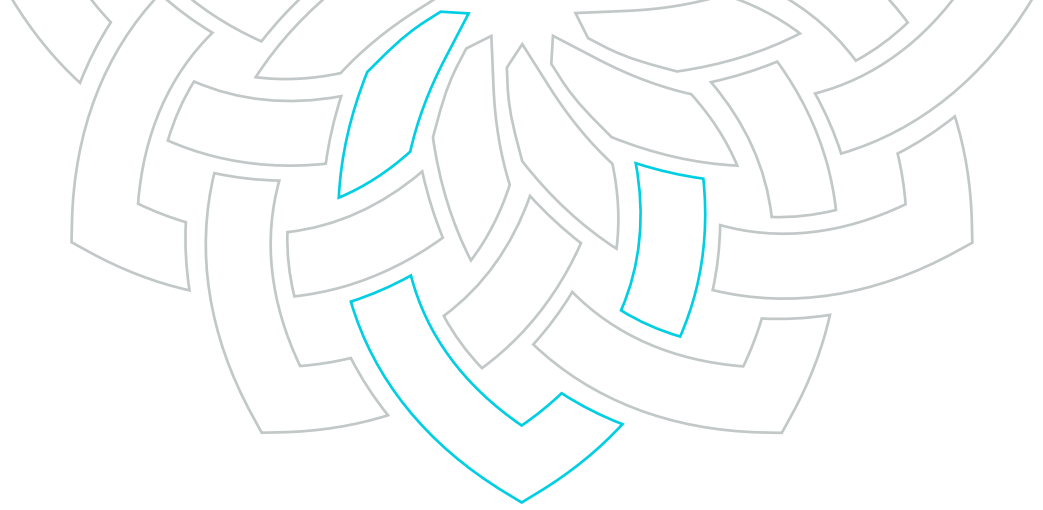
متى تبدأ ومتى تنتهي؟

لا يوجد جواب فردي , ما نعرفه هو بداية مشوقة مع تصورنا للأشياء وكيف يمكننا جعل هذا الخيال يترجم الى الواقع.

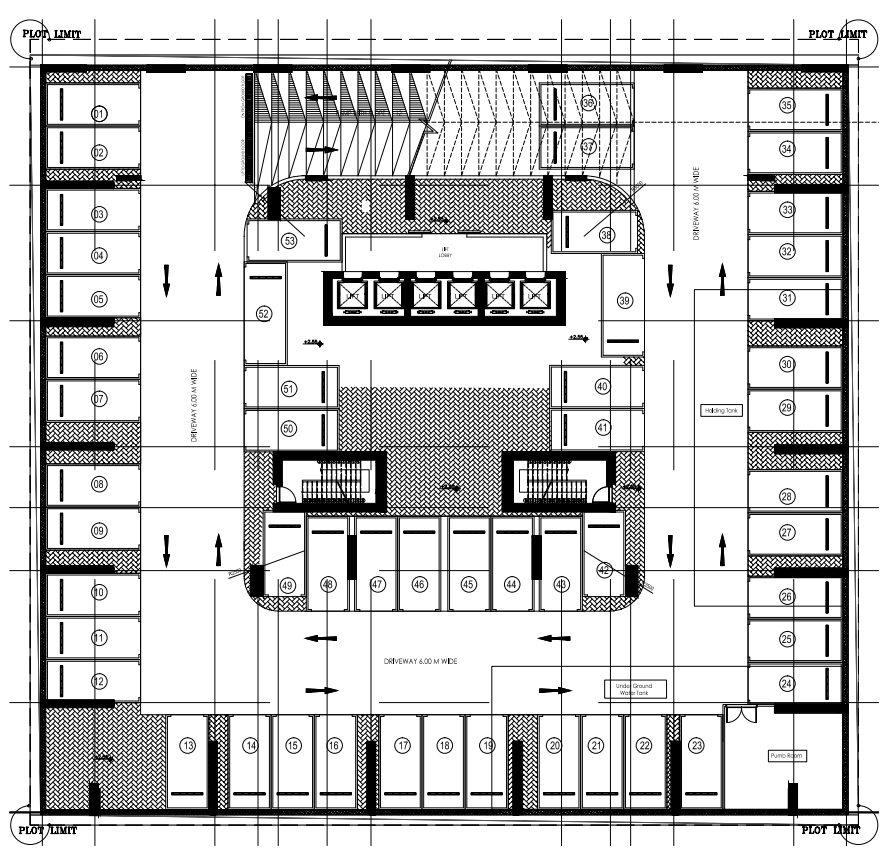
في برج العامرة نحن دفعنا حدود التميز أبعد قليلا من المستوى المعاصر.

هو رمز الرقي المفعم بالخيال ، مما يتيح لك تجربة غاية التميز .

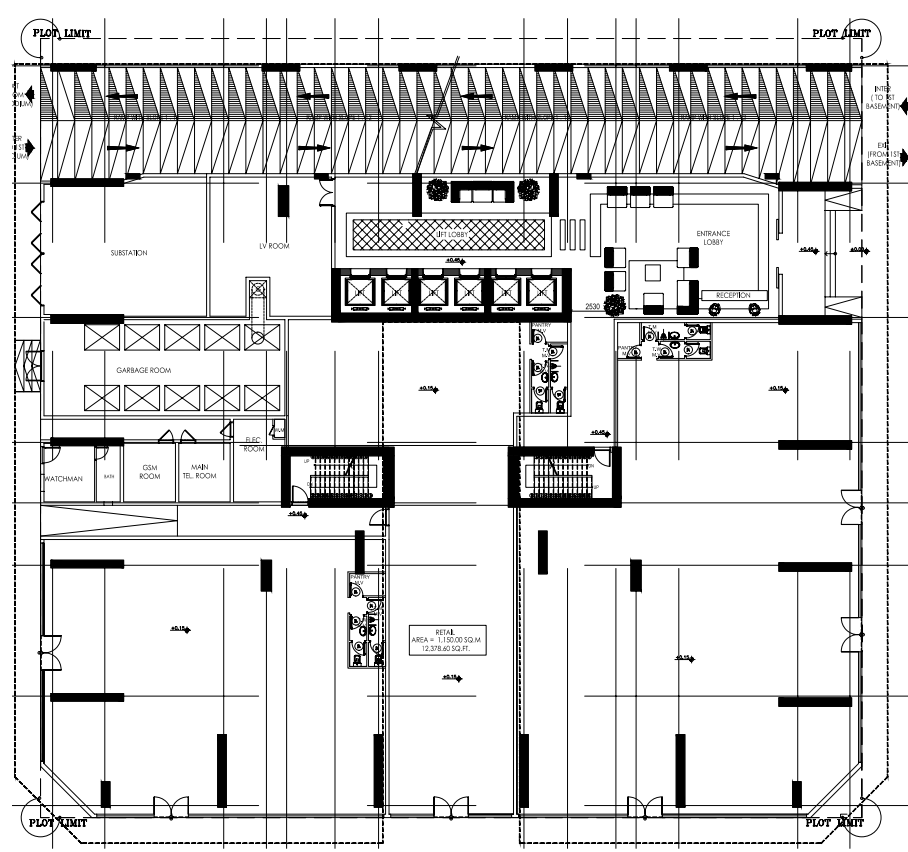
برج العامرة مصمم خصيصاً لأصحاب الأذواق الرفيعة الذين يفضلون نمط حياة مميز ويسعون دائماً نحو الأفضل ، كل من يعتبر عجمان مدينته يعي طبيعتها المتطورة باستمرار ، وفاهم للتطوير العقاري ملتزمة بتلبية المتطلبات المتغيرة لهذه الإمارة الحيوية وقلبها النابض بالثقافات المختلفة.



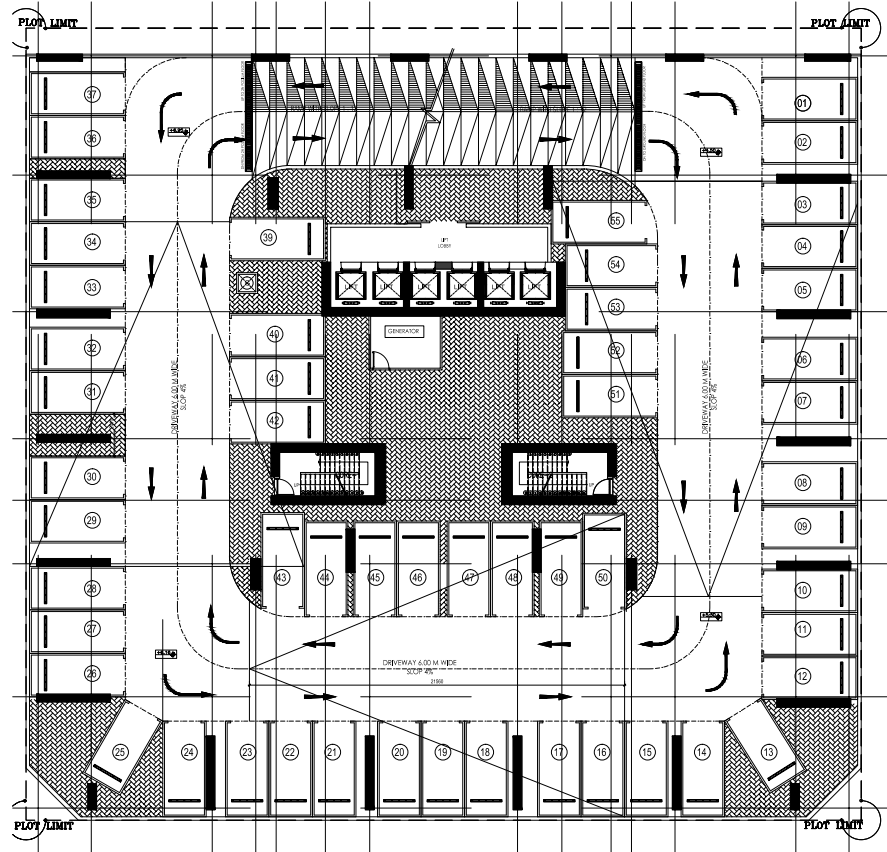
1ST BASEMENT



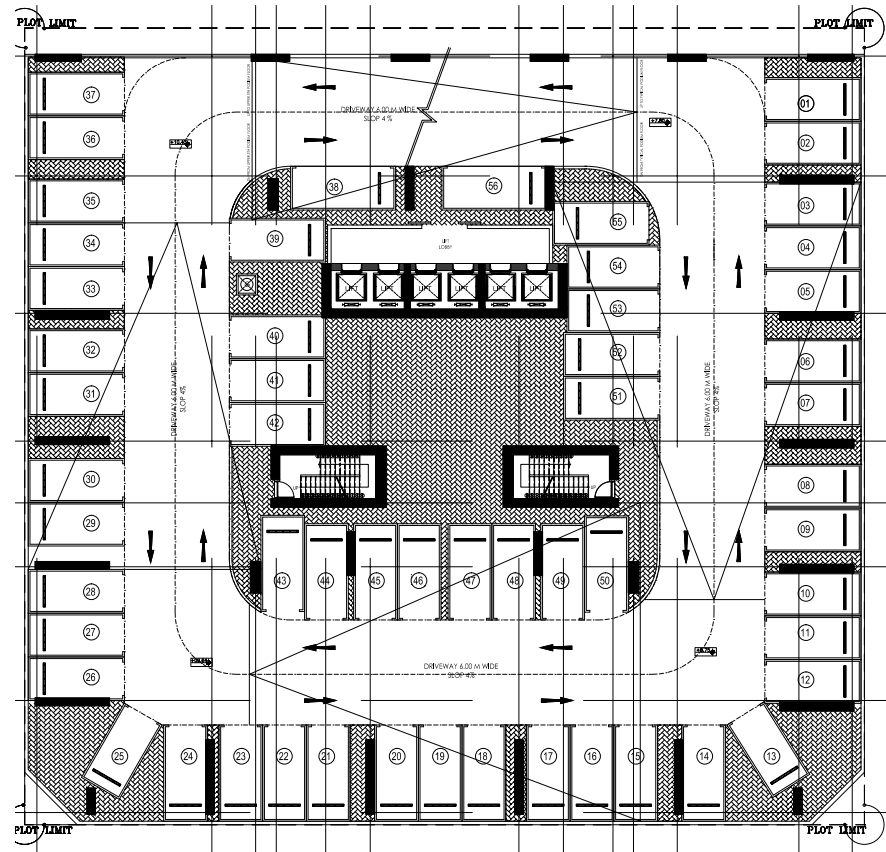
GROUND FLOOR



1ST PODIUM



2ND-5TH PODIUM



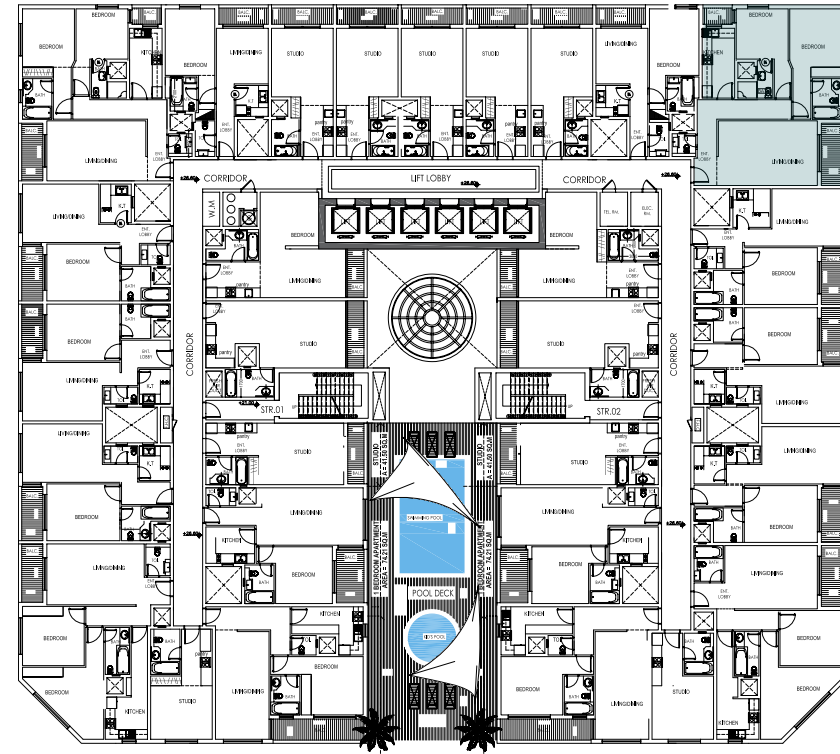
Two Bed Room Type One.

Flat No : 125 - 229 - 329 - 429 - 529 - 629
729 - 829 - 929 - 1029 - 1129 - 1229

Flat Area : 1325.264 sq.ft
123.12 sq.m

1	Bed Room	4.00 X 3.60 m
2	Bed Room	3.85 X 3.60 m
3	Living Room	4.39 X 6.50 m
4	Kitchen	4.70 X 2.40 m
5	Bath	2.51 X 2.20 m
6	Bath	2.60 X 2.20 m
7	Balcony	4.24 X 1.70 m
8	Balcony	2.20 X 1.40 m

Key Plan



All materials dimensions and drawings are approximate. The information is subject to change without prior notice. The developers reserves the right to make revisions. Do not scale drawings. Computer renderings displayed are artistic representation of the project. Variations may occur. These Floor plans are for the purpose of demonstration and cannot be considered as final.

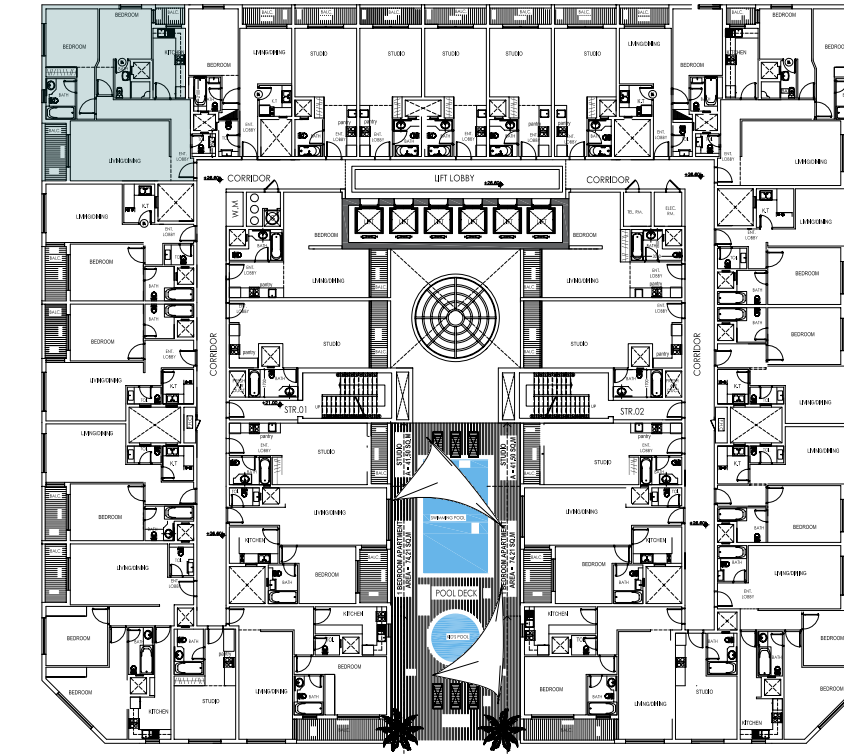
Two Bed Room Type Tow.

Flat No : 108 - 208 - 308 - 408 - 508 - 608
708 - 808 - 908 - 1008 - 1108 - 1208

Flat Area : 1373.056 sq.ft
127.56 sq.m

1	Bed Room	4.00 X 3.60 m
2	Bed Room	3.85 X 3.60 m
3	Living Room	4.10 X 6.50 m
4	Kitchen	4.70 X 2.40 m
5	Bath	2.90 X 2.10 m
6	Bath	2.60 X 2.20 m
7	Balcony	3.95 X 1.70 m
8	Balcony	2.50 X 1.40 m

Key Plan



All materials dimensions and drawings are approximate. The information is subject to change without prior notice. The developers reserves the right to make revisions. Do not scale drawings. Computer renderings displayed are artistic representation of the project. Variations may occur. These Floor plans are for the purpose of demonstration and cannot be considered as final.

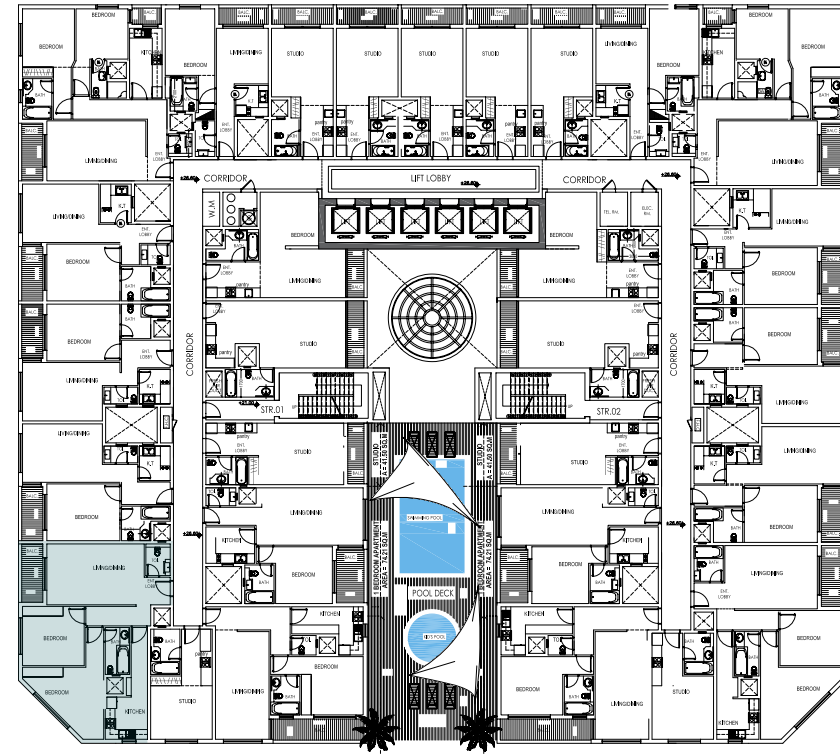
Two Bed Room Type Three.

Flat No : 112 - 212 - 312 - 412 - 512 - 612
712 - 812 - 912 - 1012 - 1112 - 1212

Flat Area : 1270.238 sq.ft
118.008 sq.m

1	Bed Room	4.00 X 4.20 m
2	Bed Room	5.40 X 4.84 m
3	Living Room	6.20 X 4.15 m
4	Kitchen	3.90 X 3.00 m
5	Bath	3.70 X 1.90 m
6	Bath	2.89 X 2.20 m
7	Balcony	4.00 X 1.70 m

Key Plan



All materials dimensions and drawings are approximate. The information is subject to change without prior notice. The developers reserves the right to make revisions. Do not scale drawings. Computer renderings displayed are artistic representation of the project. Variations may occur. These Floor plans are for the purpose of demonstration and cannot be considered as final.

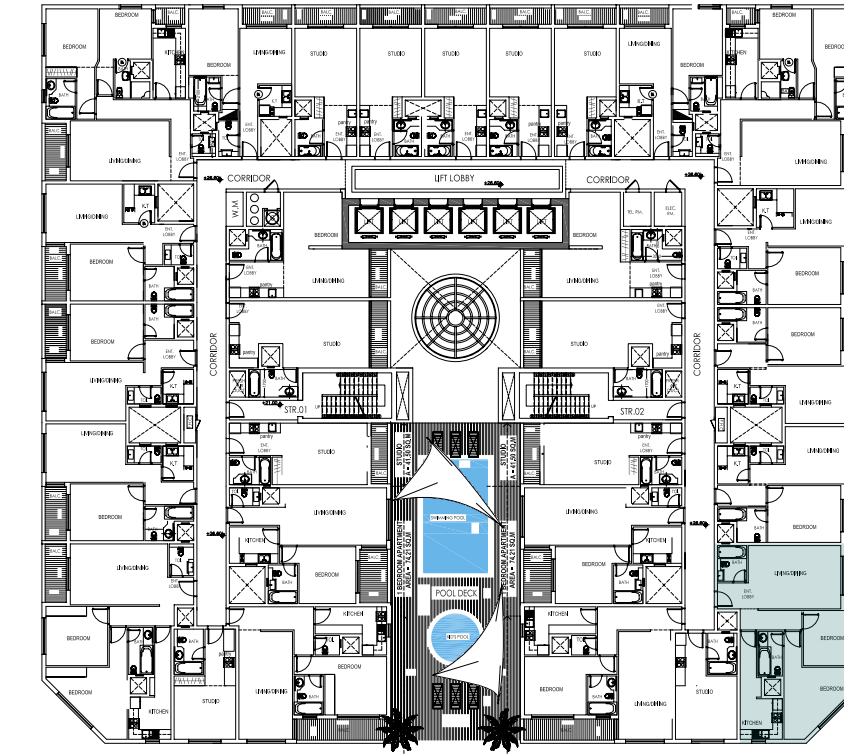
Two Bed Room Type Four.

Flat No : 121 - 225 - 325 - 425 - 525 - 625
725 - 825 - 925 - 1025 - 1125 - 1225

Flat Area : 1281.605 sq.ft
119.064 sq.m

1	Bed Room	4.20 X 3.80 m
2	Bed Room	5.40 X 4.84 m
3	Living Room	6.20 X 4.15 m
4	Kitchen	3.90 X 3.00 m
5	Bath	3.80 X 1.90 m
6	Bath	2.80 X 2.20 m
7	Balcony	4.15 X 1.70 m

Key Plan



All materials dimensions and drawings are approximate. The information is subject to change without prior notice. The developers reserves the right to make revisions. Do not scale drawings. Computer renderings displayed are artistic representation of the project. Variations may occur. These Floor plans are for the purpose of demonstration and cannot be considered as final.

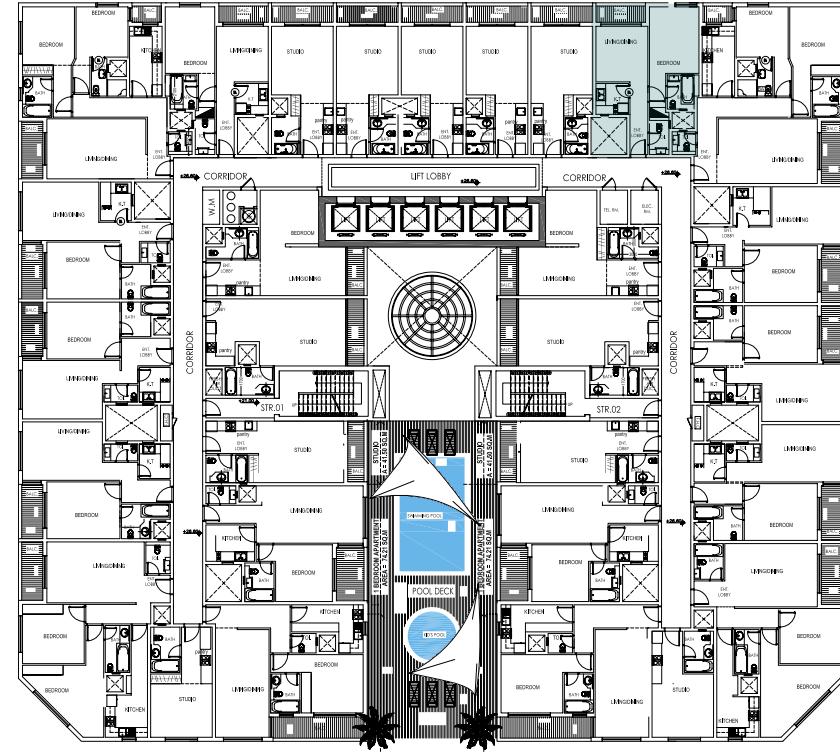
One Bed Room Type One.

Flat No : 101 - 201 - 301 - 401 - 501 - 601
701 - 801 - 901 - 1001 - 1101 - 1201

Flat Area : 758.3453 sq.ft
70.452 sq.m

1	Bed Room	4.40 X 3.45 m
2	Living Room	4.25 X 3.60 m
3	Kitchen	2.75 X 2.40 m
4	Bath	2.70 X 2.10 m
5	Bath	2.40 X 1.60 m
6	Balcony	3.45 X 1.40 m

Key Plan



All materials dimensions and drawings are approximate. The information is subject to change without prior notice. The developers reserves the right to make revisions. Do not scale drawings. Computer renderings displayed are artistic representation of the project. Variations may occur. These Floor plans are for the purpose of demonstration and cannot be considered as final.

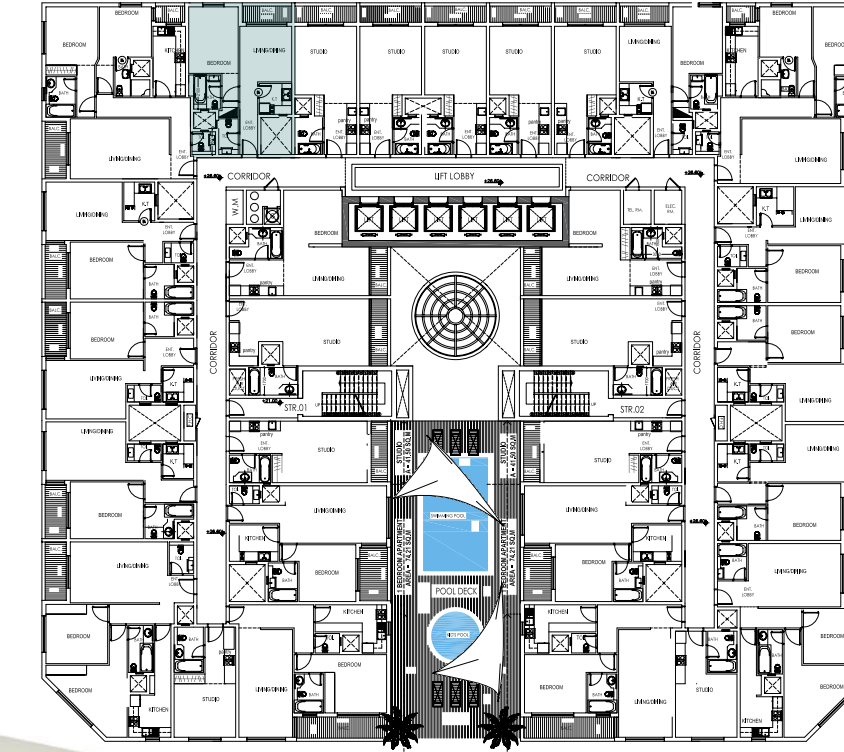
One Bed Room Type Two.

Flat No : 107 - 207 - 307 - 407 - 507 - 607
707 - 807 - 907 - 1007 - 1107 - 1207

Flat Area : 757.5703 sq.ft
70.38 sq.m

1	Bed Room	4.40 X 3.45 m
2	Living Room	4.25 X 3.60 m
3	Kitchen	2.75 X 2.40 m
4	Bath	2.70 X 2.10 m
5	Bath	2.40 X 1.60 m
6	Balcony	3.45 X 1.40 m

Key Plan



All materials dimensions and drawings are approximate. The information is subject to change without prior notice. The developers reserves the right to make revisions. Do not scale drawings. Computer renderings displayed are artistic representation of the project. Variations may occur. These Floor plans are for the purpose of demonstration and cannot be considered as final.

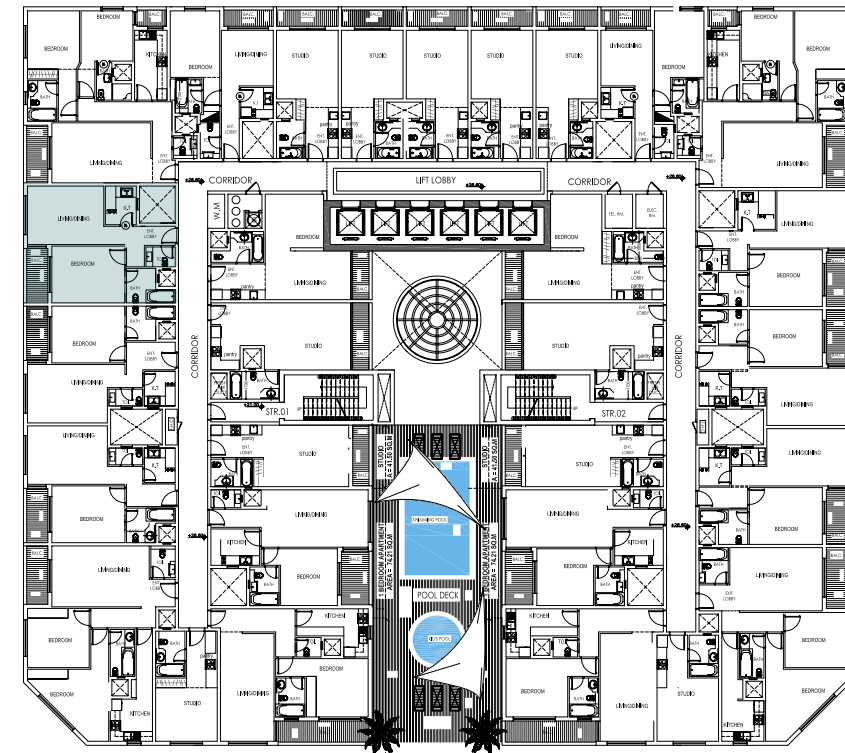
One Bed Room Type Three.

Flat No : 109 - 209 - 309 - 409 - 509 - 609
709 - 809 - 909 - 1009 - 1109 - 1209

Flat Area : 904.8218 sq.ft
84.06 sq.m

1	Bed Room	4.90 X 3.55 m
2	Living Room	4.30 X 4.00 m
3	Kitchen	2.55 X 2.40 m
4	Bath	2.63 X 2.20 m
5	Bath	2.20 X 2.10 m
6	Balcony	3.75 X 1.70 m

Key Plan



All materials dimensions and drawings are approximate. The information is subject to change without prior notice. The developers reserves the right to make revisions. Do not scale drawings. Computer renderings displayed are artistic representation of the project. Variations may occur. These Floor plans are for the purpose of demonstration and cannot be considered as final.

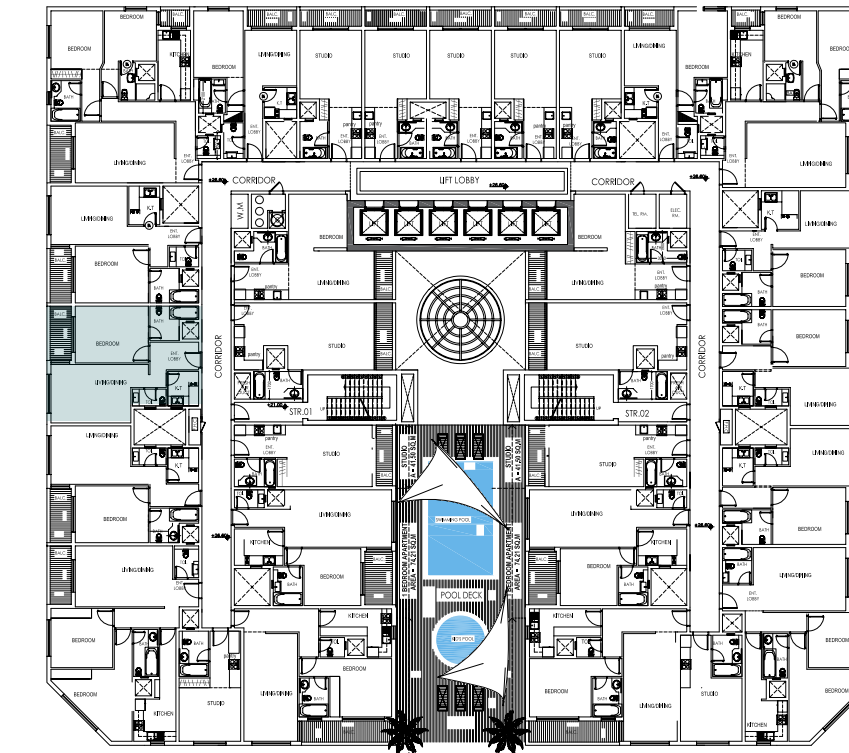
One Bed Room Type Four.

Flat No : 110 - 210 - 310 - 410 - 510 - 610
710 - 810 - 910 - 1010 - 1110 - 1210

Flat Area : 893.4551 sq.ft
83.004 sq.m

1	Bed Room	4.90 X 3.55 m
2	Living Room	4.30 X 4.00 m
3	Kitchen	2.55 X 2.40 m
4	Bath	2.63 X 2.20 m
5	Bath	2.20 X 2.10 m
6	Balcony	3.75 X 1.70 m

Key Plan



All materials dimensions and drawings are approximate. The information is subject to change without prior notice. The developers reserves the right to make revisions. Do not scale drawings. Computer renderings displayed are artistic representation of the project. Variations may occur. These Floor plans are for the purpose of demonstration and cannot be considered as final.

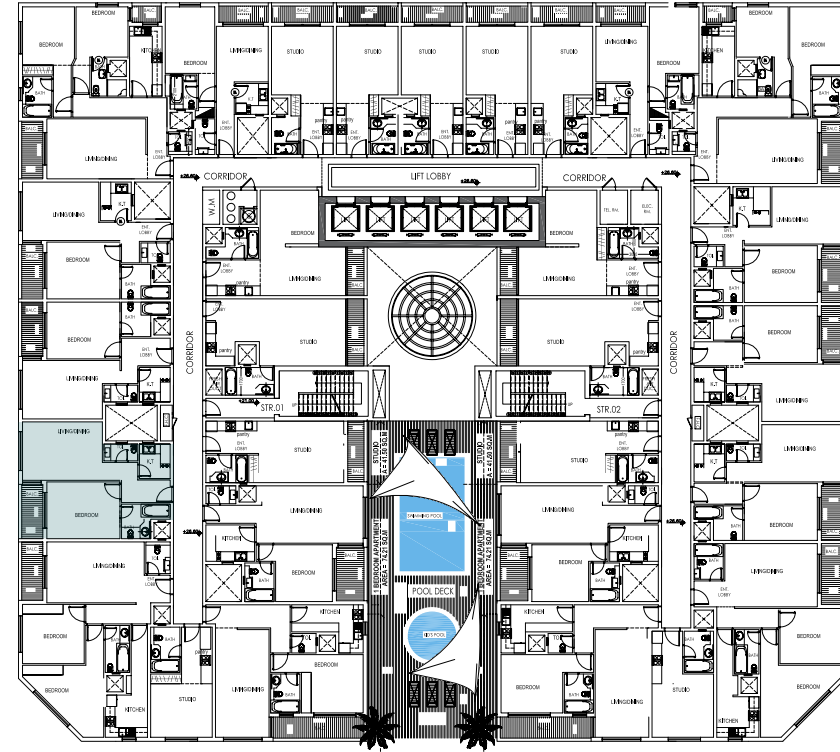
One Bed Room Type Five.

Flat No : 111 - 211 - 311 - 411 - 511 - 611
711 - 811 - 911 - 1011 - 1111 - 1211

Flat Area : 883.38 sq.ft
82.068 sq.m

1	Bed Room	4.90 X 3.55 m
2	Living Room	4.30 X 4.00 m
3	Kitchen	2.55 X 2.40 m
4	Bath	2.63 X 2.20 m
5	Bath	2.20 X 2.10 m
6	Balcony	3.75 X 1.70 m

Key Plan



All materials dimensions and drawings are approximate. The information is subject to change without prior notice. The developers reserves the right to make revisions. Do not scale drawings. Computer renderings displayed are artistic representation of the project. Variations may occur. These Floor plans are for the purpose of demonstration and cannot be considered as final.

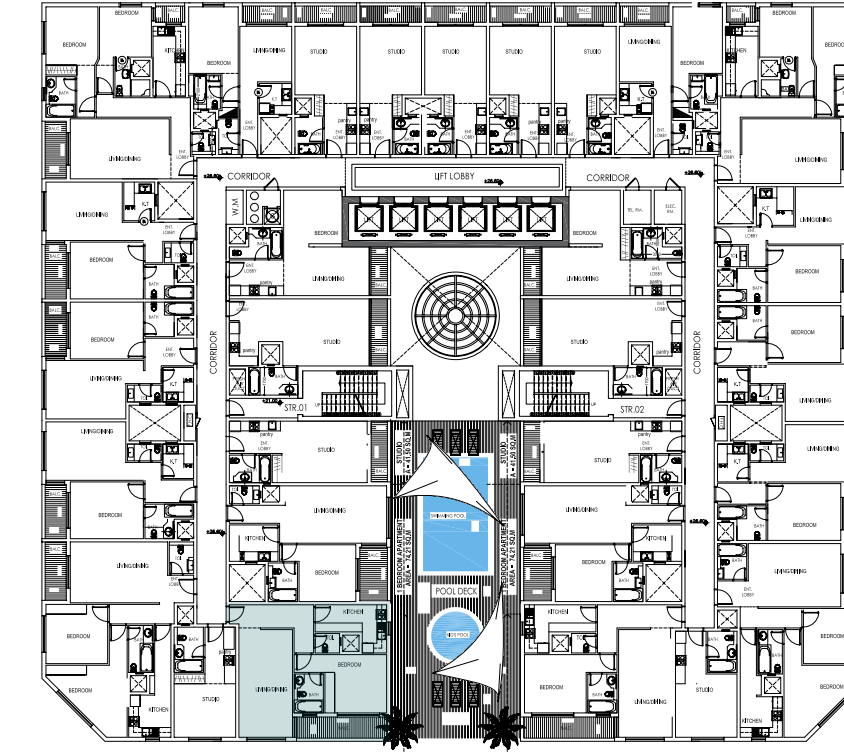
One Bed Room Type Six.

Flat No : 114 - 214 - 314 - 414 - 514 - 614
714 - 814 - 914 - 1014 - 1141 - 1241

Flat Area : 1049.361 sq.ft
97.488 sq.m

1	Bed Room	4.00 X 3.00 m
2	Living Room	7.04 X 3.70 m
3	Kitchen	3.50 X 3.07 m
4	Bath	2.80 X 2.20 m
5	Bath	2.07 X 1.40 m
6	Balcony	6.00 X 1.70 m

Key Plan



All materials dimensions and drawings are approximate. The information is subject to change without prior notice. The developers reserves the right to make revisions. Do not scale drawings. Computer renderings displayed are artistic representation of the project. Variations may occur. These Floor plans are for the purpose of demonstration and cannot be considered as final.

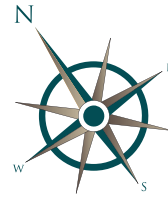
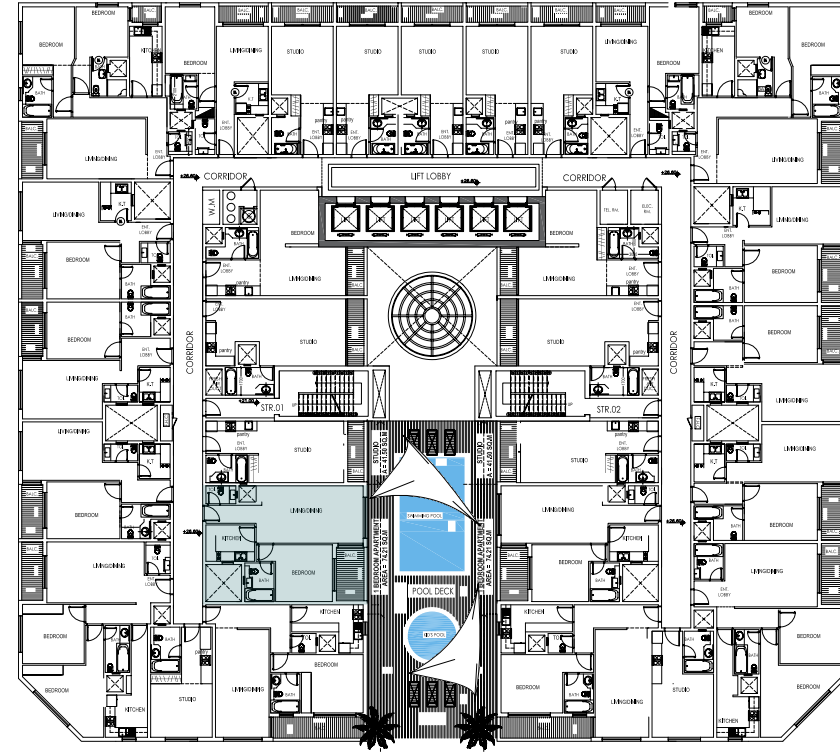
One Bed Room Type Seven.

Flat No : 115 - 215 - 315 - 415 - 515 - 615
715 - 815 - 915 - 1015 - 1151 - 1251

Flat Area : 951.064 sq.ft
88.356 sq.m

1	Bed Room	5.10 X 3.90 m
2	Living Room	6.65 X 3.90 m
3	Kitchen	3.45 X 2.47 m
4	Bath	2.22 X 2.20 m
5	Bath	2.07 X 1.60 m
6	Balcony	3.70 X 2.10 m

Key Plan



All materials dimensions and drawings are approximate. The information is subject to change without prior notice. The developers reserves the right to make revisions. Do not scale drawings. Computer renderings displayed are artistic representation of the project. Variations may occur. These Floor plans are for the purpose of demonstration and cannot be considered as final.

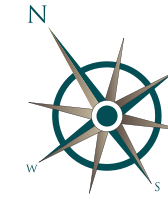
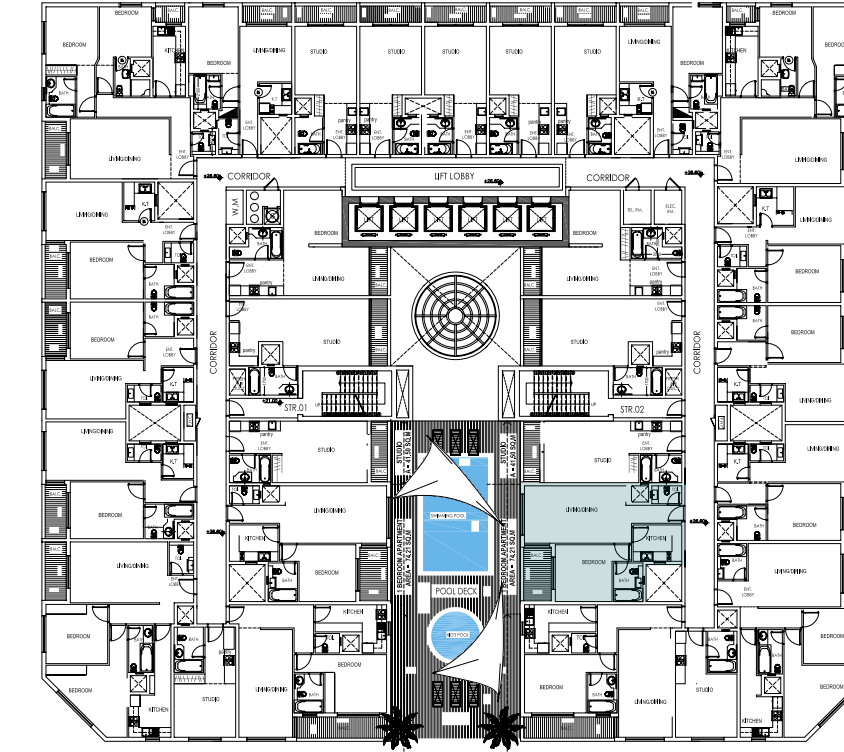
One Bed Room Type Eight.

Flat No : 118 - 222 - 322 - 422 - 522 - 622
722 - 822 - 922 - 1022 - 1122 - 1222

Flat Area : 952.2265 sq.ft
88.464 sq.m

1	Bed Room	5.10 X 3.90 m
2	Living Room	7.00 X 3.93 m
3	Kitchen	3.40 X 2.45 m
4	Bath	2.78 X 2.20 m
5	Bath	1.50 X 2.05 m
6	Balcony	3.70 X 2.10 m

Key Plan



All materials dimensions and drawings are approximate. The information is subject to change without prior notice. The developers reserves the right to make revisions. Do not scale drawings. Computer renderings displayed are artistic representation of the project. Variations may occur. These Floor plans are for the purpose of demonstration and cannot be considered as final.

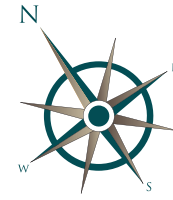
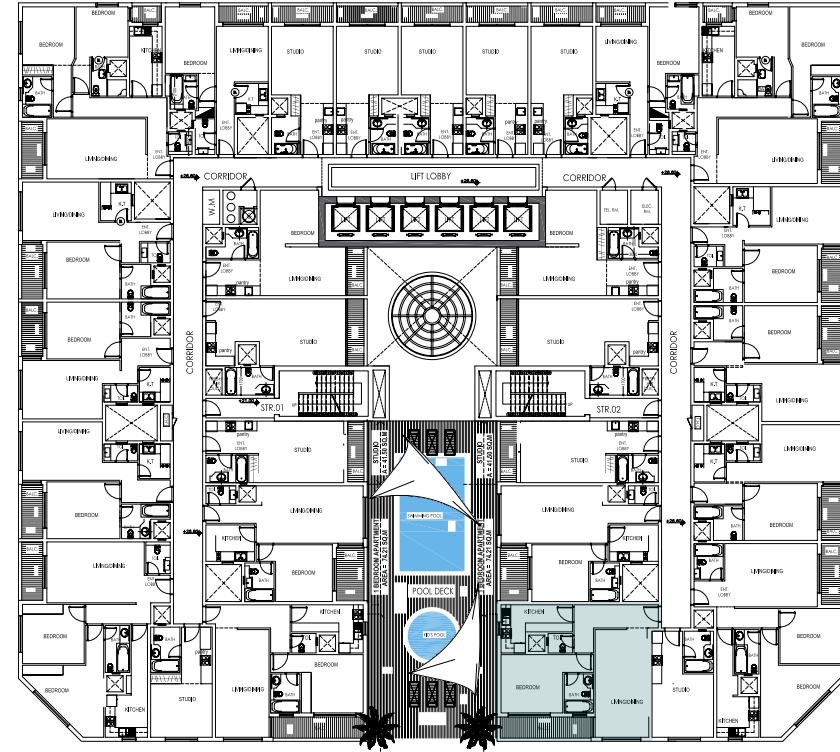
One Bed Room Type Nine.

Flat No : 119 - 223 - 323 - 423 - 523 - 623
723 - 823 - 923 - 1023 - 1123 - 1223

Flat Area : 1052.59 sq.ft
97.788 sq.m

1	Bed Room	4.10 X 4.00 m
2	Living Room	7.04 X 3.73 m
3	Kitchen	4.80 X 3.37 m
4	Bath	2.80 X 2.20 m
5	Bath	1.900 X 1.600 m
6	Balcony	6.20 X 1.90 m

Key Plan



All materials dimensions and drawings are approximate. The information is subject to change without prior notice. The developers reserves the right to make revisions. Do not scale drawings. Computer renderings displayed are artistic representation of the project. Variations may occur. These Floor plans are for the purpose of demonstration and cannot be considered as final.

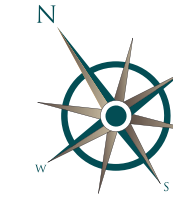
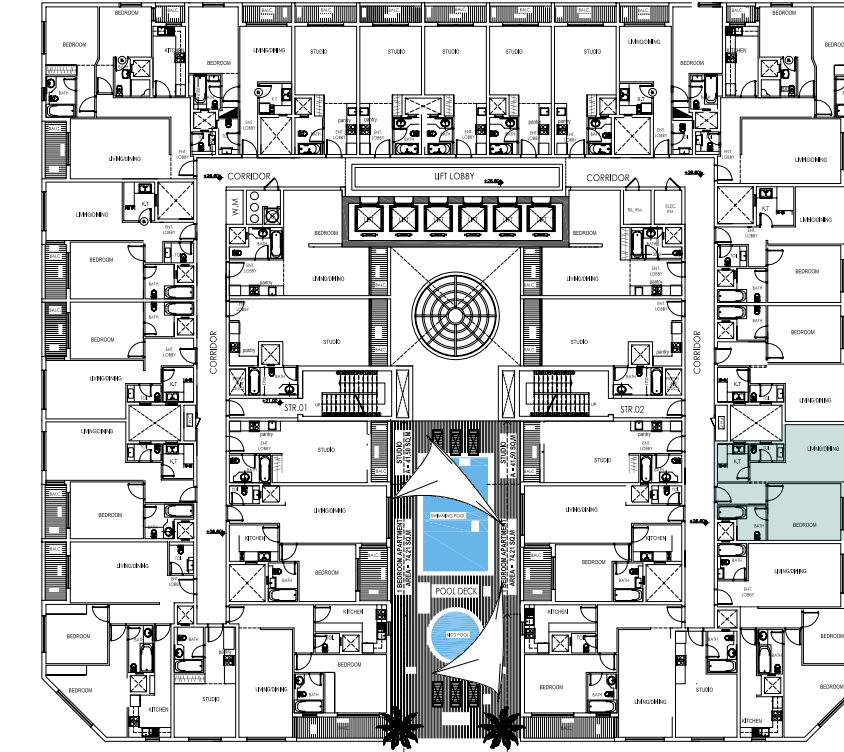
One Bed Room Type Ten.

Flat No : 122 - 226 - 326 - 426 - 526 - 626
726 - 826 - 926 - 1026 - 1126 - 1226

Flat Area : 881.4424 sq.ft
81.888 sq.m

1	Bed Room	4.90 X 3.90 m
2	Living Room	6.10 X 4.10 m
3	Kitchen	3.70 X 2.30 m
4	Bath	3.40 X 2.43 m
5	Bath	1.43 X 2.48 m
6	Balcony	3.75 X 1.90 m

Key Plan



All materials dimensions and drawings are approximate. The information is subject to change without prior notice. The developers reserves the right to make revisions. Do not scale drawings. Computer renderings displayed are artistic representation of the project. Variations may occur. These Floor plans are for the purpose of demonstration and cannot be considered as final.

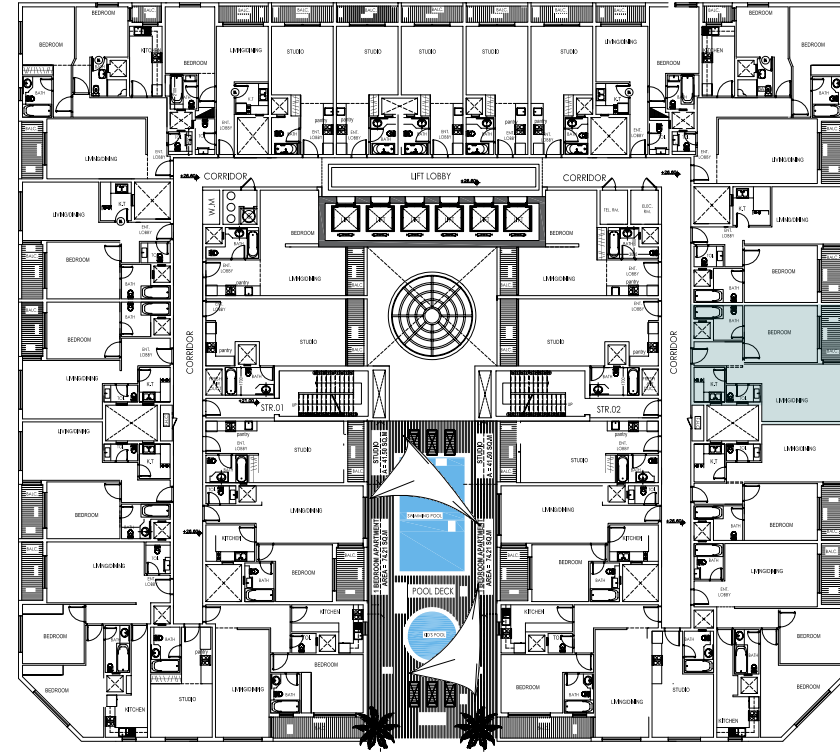
One Bed Room Type Eleven.

Flat No : 123 - 227 - 327 - 427 - 527 - 627
727 - 827 - 927 - 1027 - 1127 - 1227

Flat Area : 909.8594 sq.ft
84.528 sq.m

1	Bed Room	4.90 X 3.90 m
2	Living Room	5.32 X 3.93 m
3	Kitchen	2.53 X 2.30 m
4	Bath	3.40 X 2.43 m
5	Bath	1.43 X 2.48 m
6	Balcony	3.75 X 1.90 m

Key Plan



All materials dimensions and drawings are approximate. The information is subject to change without prior notice. The developers reserves the right to make revisions. Do not scale drawings. Computer renderings displayed are artistic representation of the project. Variations may occur. These Floor plans are for the purpose of demonstration and cannot be considered as final.

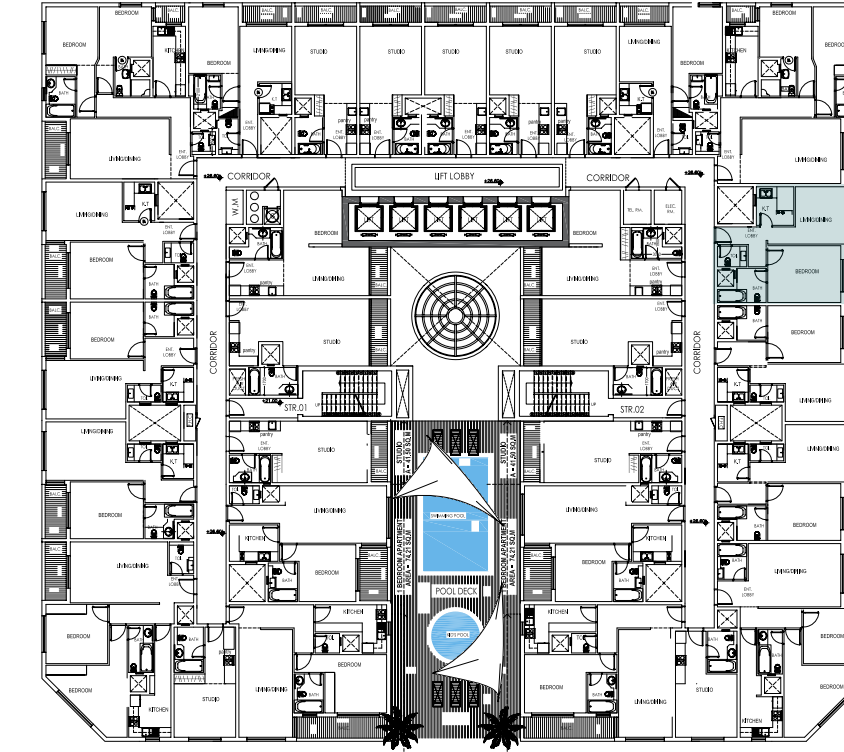
One Bed Room Type Twelfth.

Flat No : 124 - 228 - 328 - 428 - 528 - 628
728 - 828 - 928 - 1028 - 1128 - 1228

Flat Area : 913.0886 sq.ft
84.828 sq.m

1	Bed Room	4.90 X 3.77 m
2	Living Room	4.70 X 3.93 m
3	Kitchen	2.78 X 2.70 m
4	Bath	3.40 X 2.50 m
5	Bath	2.20 X 1.67 m
6	Balcony	3.75 X 1.90 m

Key Plan



All materials dimensions and drawings are approximate. The information is subject to change without prior notice. The developers reserves the right to make revisions. Do not scale drawings. Computer renderings displayed are artistic representation of the project. Variations may occur. These Floor plans are for the purpose of demonstration and cannot be considered as final.

Studio Type One.

Flat No : 102 - 202 - 302 - 402 - 502 - 602 - 702 - 802 - 902 - 1002 - 1102 - 1202

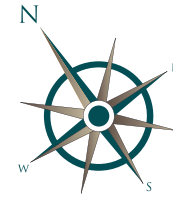
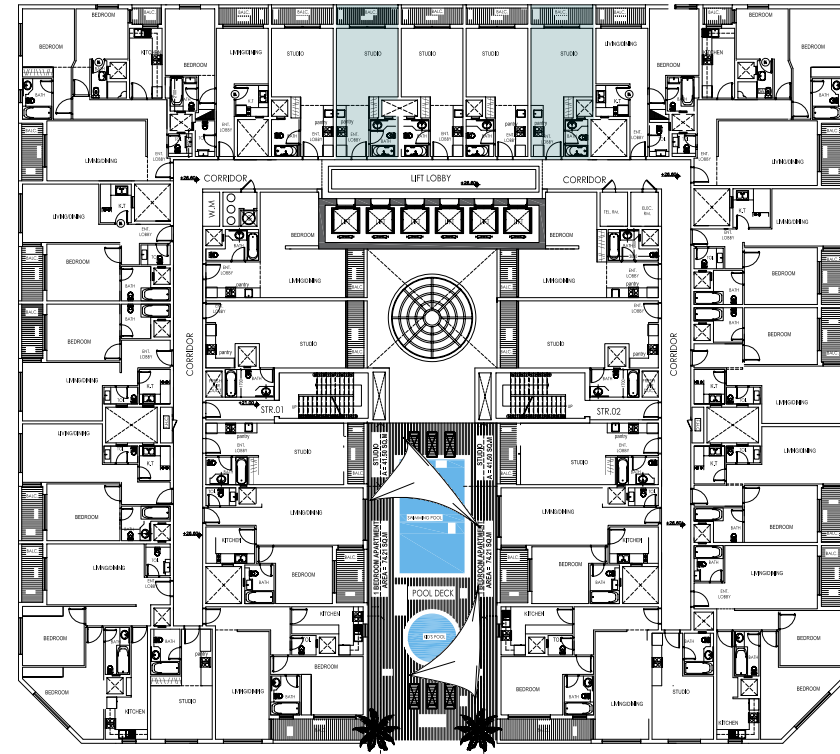
Flat Area : 495.1009 sq.ft
45.996 sq.m

1	Studio	4.63 X 4.20 m
2	Kitchen	4.07 X 3.00 m
3	Bath	2.68 X 1.80 m
4	Balcony	4.20 X 1.60 m

Flat No :105 - 205 - 305 - 405 - 505 - 605 - 705 - 805 - 905 - 1005 - 1105 - 1205

Flat Area : 493.5509 sq.ft
45.852 sq.m

Key Plan



Studio Type Tow.

Flat No : 103 - 203 - 303 - 403 - 503 - 603 - 703 - 803 - 903 - 1003 - 1103 - 1203
104 - 204 - 304 - 404 - 504 - 604 - 704 - 804 - 904 - 1004 - 1104 - 1204

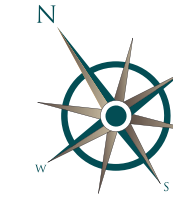
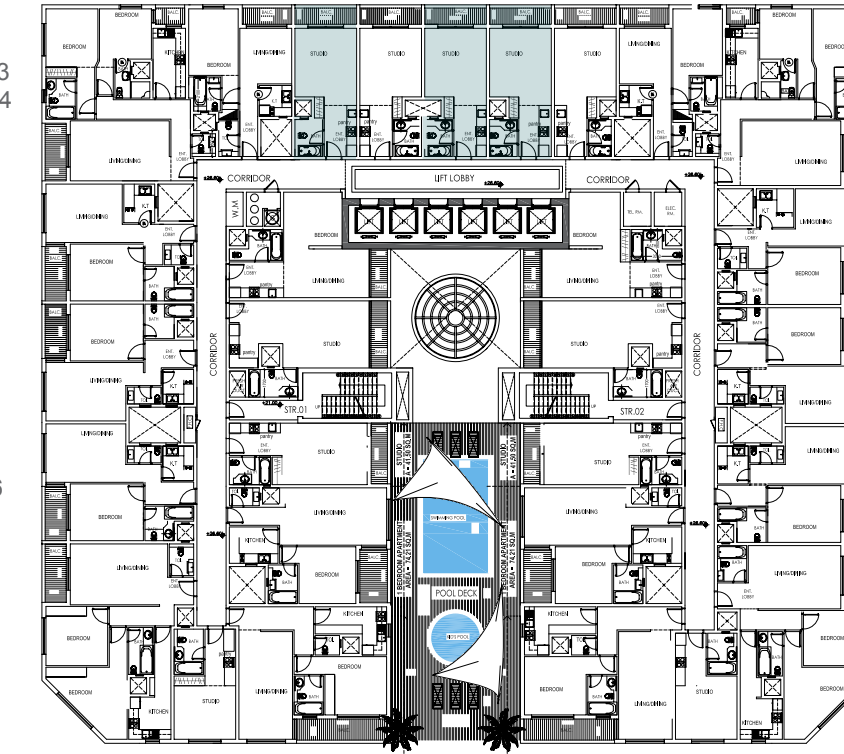
Flat Area : 493.5509 sq.ft
45.852 sq.m

1	Studio	4.63 X 4.20 m
2	Kitchen	4.07 X 3.00 m
3	Bath	2.68 X 1.80 m
4	Balcony	4.20 X 1.60 m

Flat No :106 - 206 - 306 - 406 - 506 - 606 - 706 - 806 - 906 - 1006 - 1106 - 1206

Flat Area : 483.475 sq.ft
44.916 sq.m

Key Plan



Studio Type Three.

Flat No : 113 - 213 - 313 - 413 - 513 - 613 - 713 - 813 - 913 - 1013 - 1113 - 1213

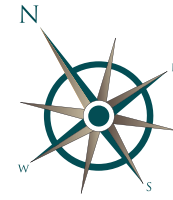
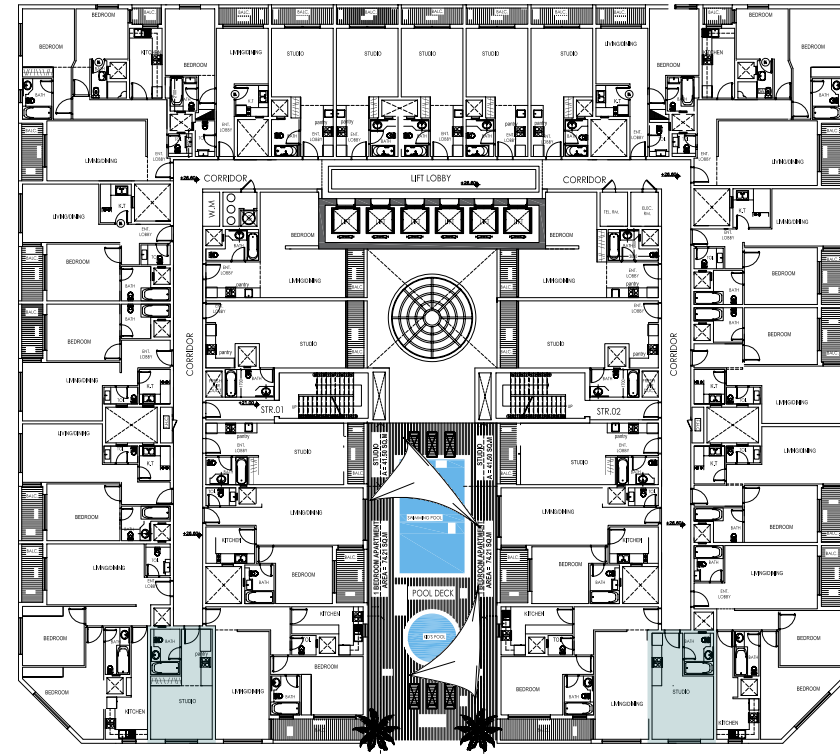
Flat Area : 388.279 sq.ft
36.072 sq.m

1	Studio	4.19 X 3.70 m
2	Kitchen	2.20 X 1.30 m
3	Bath	2.49 X 2.20 m

Flat No : 224 - 324 - 424 - 524 - 624 - 724 - 824 - 924 - 1024 - 1124 - 1224

Flat Area : 392.412 sq.ft
36.456 sq.m

Key Plan



Studio Type Four.

Flat No : 116 - 216 - 316 - 416 - 516 - 616 - 716 - 816 - 916 - 1016 - 1116 - 1216

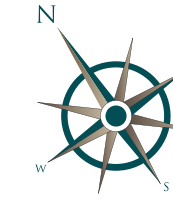
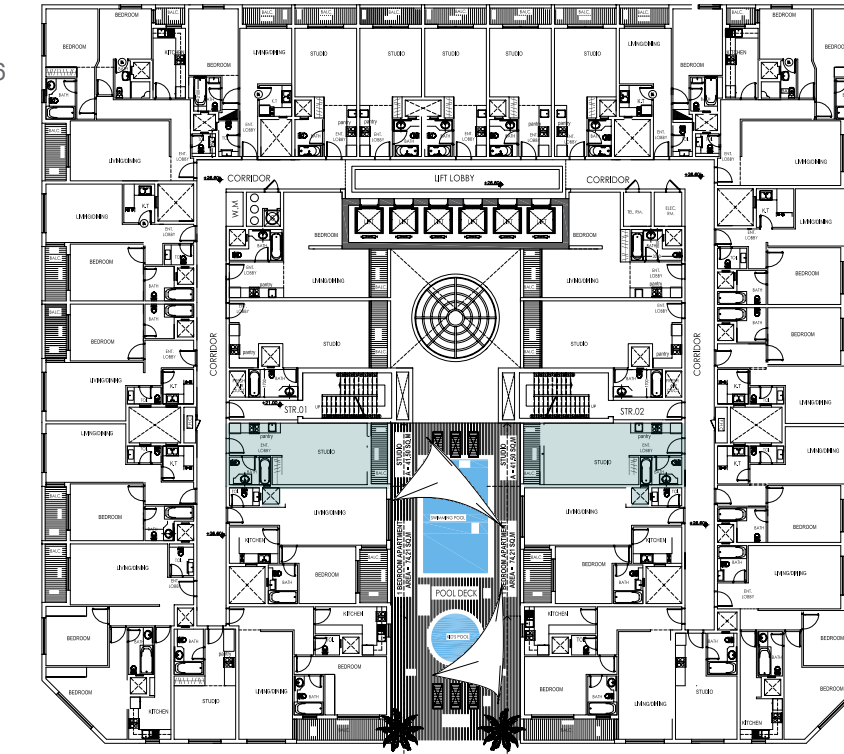
Flat Area : 547.0265 sq.ft
50.82 sq.m

1	Studio	5.95 X 4.09 m
2	Kitchen	2.95 X 2.40 m
3	Bath	2.95 X 2.10 m
4	Balcony	4.15 X 1.40 m

Flat No : 221 - 321 - 421 - 521 - 621 - 721 - 821 - 921 - 1021 - 1121 - 1221

Flat Area : 544.572 sq.ft
50.592 sq.m

Key Plan



Studio Type Five.

Flat No : 217 - 317 - 417 - 517 - 617 - 717 - 817 - 917 - 1017 - 1117 - 1217

Flat Area : 654.2359 sq.ft
60.78 sq.m

Flat No : 220 - 320 - 420 - 520 - 620 - 720 - 820 - 920 - 1020 - 1120 - 1220

Flat Area : 654.2359 sq.ft
60.76 sq.m

1	Studio	5.71 X 4.44 m
2	Kitchen	2.20 X 1.30 m
3	Bath	3.42 X 2.10 m
4	Balcony	4.20 X 1.60 m

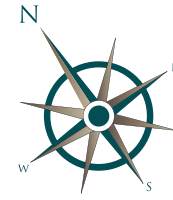
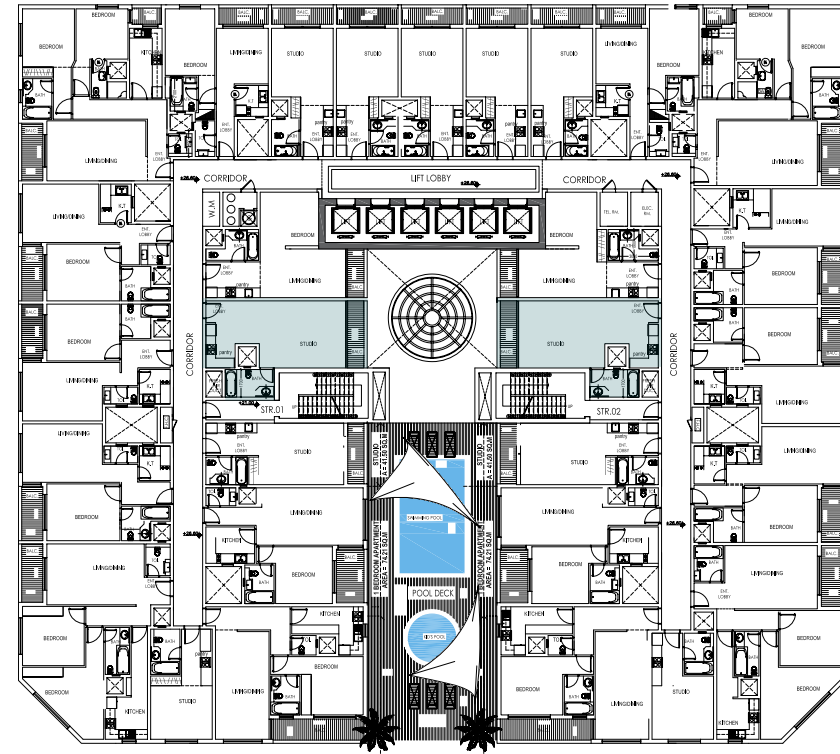
Flat No : 117

Flat Area : 544.572 sq.ft
50.592 sq.m

Flat No : 120

Flat Area : 392.412 sq.ft
36.456 sq.m

Key Plan



Studio Type Six.

Flat No : 218 - 318 - 418 - 518 - 618 - 718 - 818 - 918 - 1018 - 1118 - 1218

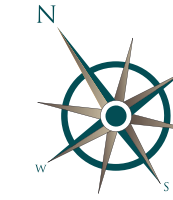
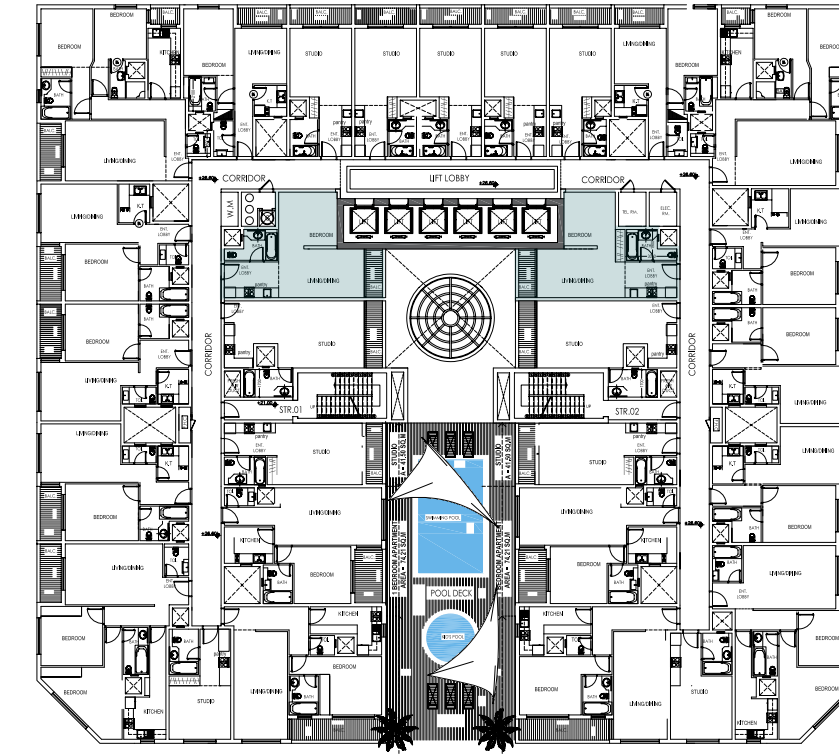
Flat Area : 636.0232 sq.ft
59.088 sq.m

1	Bed Room	4.00 X 3.70 m
2	Living Room	5.82 X 3.40 m
3	Kitchen	3.59 X 1.40 m
4	Bath	3.70 X 2.30 m
5	Balcony	3.40 X 1.52 m

Flat No : 219 - 319 - 419 - 519 - 619 - 719 - 819 - 919 - 1019 - 1119 - 1219

Flat Area : 657.0776 sq.ft
61.04 sq.m

Key Plan



PROJECT PARTNERS



فام القابضة ذ.م.م FAM HOLDING L.L.C.



سبجما آرت
لإستشارات الهندسية
SIGMAART
ENGINEERING CONSULTANTS

+971 55 550 4449

+971 4 2541066

+971 4 2541077

sigmaartec@gmail.com

info@sigmaartec.com

www.sigmaartec.com



فام للتطوير العقاري ذ.م.م
FAM PROPERTY DEVELOPMENT L.L.C.

+971 4351 7250

info@famholding.com

+971 4 3515159

www.famholding.com

عضو من مجموعة فام القابضة
Member Of Fam Holding Group



فام للمقاولات البناء ذ.م.م
FAM BUILDING CONTRACTING L.L.C.

+971 4351 7250

info@famholding.com

+971 4 3515159

www.famholding.com

عضو من مجموعة فام القابضة
Member Of Fam Holding Group



الشركة العربية للتسويق ذ.م.م

AL ARABIA L.L.C.
MARKETING COMPANY

+971 6 7455505

Info@alarabiaadv.ae

www.alarabiaadv.ae



برج العامرة
AL AAMRA TOWER



فام القابضة
FAM HOLDING



+971 4 3517250



+971 4 3515159



info@famholding.com



www.famholding.com