

DUBAI HARBOUR
RESIDENCES

BEACHFRONT LIVING LIKE NEVER BEFORE

A SYMPHONY OF COAST AND CULTURE

Dubai Harbour Residences is a refined collection of beachfront residences, carefully crafted with the joys of hosting and superior liveability in mind. Situated in a prime position in the heart of Dubai Harbour, these exquisite homes benefit from rich culture, seafront delights, and the exceptional lifestyle offerings of their carefully curated district, Dubai Harbour.



YOUR INVITATION
TO OWN, EXPLORE,
AND ENJOY THE
EXCEPTIONAL



STRATEGICALLY
POSITIONED,
CENTRALLY LOCATED

THE HEART OF THE HARBOUR

Located in Dubai Harbour, residents enjoy unrivalled proximity to the beachfront while being immersed in city living. Where culture and the pristine sands converge, there is easy access to all that you may need or desire.

Here, you will live among refined places of leisure, a bustling marina, and the sand and sea of the Arabian Gulf. A central boulevard, waterfront promenades, and Dubai Harbour's celebrated leisure offerings combine to create a destination beyond comparison.





*The new bridge will reduce the travel time from Sheikh Zayed Road to Dubai Harbour from 12 to 3 minutes.

The Dubai Harbour Residences sits just over 30km from both Dubai International Airport and Dubai World Central Airport.



AT ONE WITH THE SEA AND CITY

A SEA STATE OF BEING

Life at Dubai Harbour Residences reflects the freedom of the open seas and the enchanting rhythm of the marina. Residents enjoy sunrise walks on sandy shores, boundless adventures on ocean waters, and social gatherings enriched by gentle breezes.

At home among award-winning marinas, a private beach, and a newly built road that will provide direct access to Sheikh Zayed Road, you will enjoy a wealth of remarkable experiences that unfold on land and at sea.



A LIFE EMBRACED
BY NATURE
AND ENRICHED
BY WATERFRONT
CULTURE



BEACHFRONT
RESIDENCES,
REIMAGINED AND
REFINED

INSPIRED ARCHITECTURE

Internationally acclaimed architects, Nikken Sekkei, present these exclusive residences, designed to support moments of congregation, celebration, and contemplation.

Intelligently oriented to provide incredible views in every direction, these beachfront homes are the result of a deep respect for design, a sophisticated eye for detail, and an understanding of the desires of those who harbour an affinity for the sea.

There are 343 units and two penthouses, spanning across one, two, three, and four-bedroom apartments.



Dubai Harbour Residences provides instant access to the beach



Glass façades, large terraces, and epic panoramas create an expansive sense of space

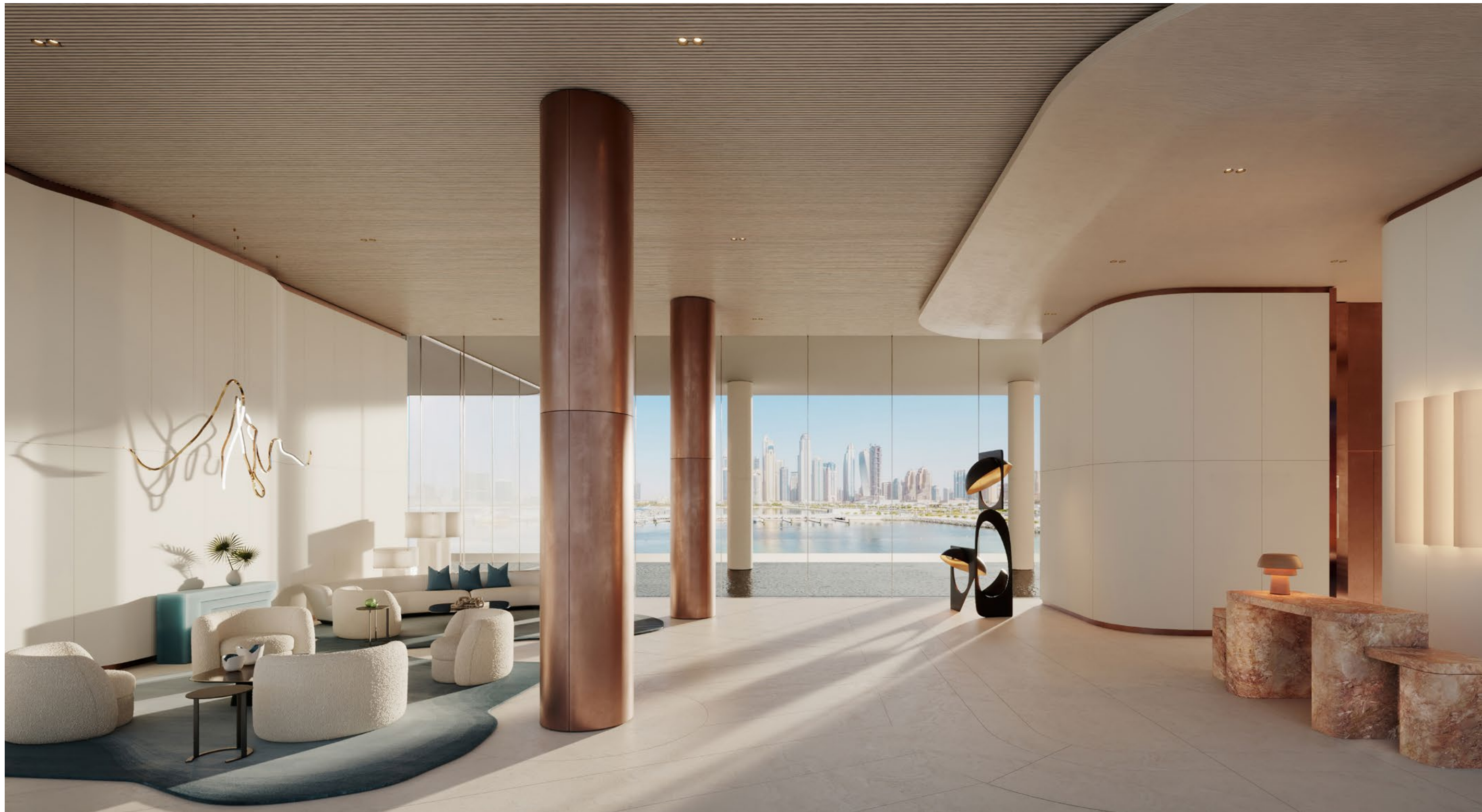


IMPECCABLY DESIGNED
SPACES FOR HOSTING
AND RELAXING

INTERIORS THAT ELEVATE

These refined residences feature generous layouts, high ceilings, and large terraces designed to be enjoyed year-round.

Each home features nautical colour palettes, rich in deep blues and crisp whites, and impeccable textures and finishings. These exquisite elements are bathed in natural light and accompanied by panoramic sea- and city-scapes.



Reception lobby area



Lift lobby area



A space to indulge in moments of relaxation and comfort



Dining and living area



Panoramic bedroom views of the sands, sea, and city



Bathrooms adorned with impeccable textures and fine finishes



Secondary bedroom



Secondary bathroom

WHERE THE SUN
AND SHORES ARE
YOURS TO SAVOUR



LUXURY AMENITIES AND SERVICES FOR SUPERIOR LIVEABILITY

EFFORTLESS BY DESIGN

From an array of wellness options to dedicated family spaces and personal services, Dubai Harbour Residences elevates this rare beachfront experience.

Rooftop infinity pools with sweeping vistas provide moments that inspire and replenish. A fitness centre and gym, wellness facilities, adults swimming pool, kids' play area, and separate kids' swimming pool exemplify a commitment to supporting life's many needs and moments.

Rooted in luxury hospitality, this exclusive collection of amenities supports an effortless existence and invites all who reside at Dubai Harbour Residences to thrive.

AMENITIES

ENTRANCE LOBBY AT GROUND FLOOR

Reception area
Lobby seating area
Lift lobby
Mail room

FITNESS/GYM

Reception counter
Exercise area
Yoga studio
Drink station and towel drop-off
Sauna
Steam room
Toilets
Male and female changing rooms
Lockers
Vanity counters
Shower room with drying area

WELLNESS

Treatment room
Hairdressing facilities
Manicure and pedicure salon
Changing rooms with showers

SWIMMING POOL

Adults' swimming pool
Kids' swimming pool
Seating area and lounge
Showers
Separate male and female changing rooms
Outdoor dining area

KIDS' PLAY AREA

Recreation and TV area
Learning area
Washrooms
Baby changing room

BASEMENT

Parking
Staff washroom
Staff pantry
Drivers' lounge
Drivers' washroom

COMMUNITY BENEFITS

Multifunctional room
Access to the marinas and beaches
Close distance to restaurants and cafes
Private beach area with F&B

