

Bluebell

RESIDENCE



جي جا العقارية
PROPERTIES

www.bluebellresidence.ae



Love
where
you live.





Contents

Ajman	06	Invest in Ajman	24
Al Ameera	08	Payment Plan	29
Bluebell Residence	10	Floor Plans	31
The Locale	12	GJ Properties	51
Health Club	14	Contact	52
Project Features	17		



Ajman

Located in the United Arab Emirates, Ajman is a stunning city with a beautiful coastline, white-sandy beaches, and crystal-clear waters. It is a popular destination for water sports, swimming, diving, and jet skiing.

Ajman has a rich cultural heritage and history. The city is home to several historical sites, including the Ajman Museum, housed in an 18th-century fort, which offers visitors a glimpse into the region's history and traditions.

For those interested in strolling through the old-world bazaars, Ajman's traditional markets, or souks, are a must-visit. The Al Bustan Souk is famous for its textiles, spices, and gold, making it a popular shopping destination for both tourists and locals.

With a strong sense of community, hospitality is a hallmark of Ajman. Visitors are often struck by the warmth and hospitality of the locals. Whether you are a first-time visitor or a frequent traveler to the UAE, Ajman is certainly worth a visit.





It's homely.
It's got
all the
hotspots.

Take a step outside and feel the vibe that resonates with your aura. Embracing Ajman's ethos and sense of community, Bluebell Residence comes with all of its energy. Just a short drive away from Ajman's crowning jewel - the Creek, your getaways can't get easier.

Find your tribe amongst the working folk, the party animals, or the ones that love to unwind, since Ajman's population is a bouquet of great people. The creek stays alive with wooden dhows - Arabian boats that are amalgamated in the kingdom's history.

Hidden treasures of a bygone era, with an abundance of colorful fish, marine life, and a bustling waterfront are some of the picturesque anchors of Ajman's lifestyle.

Where
prosperity
blooms.





State-of-the-art craftsmanship embossed with the iconic bluebell flower, the residence stands for Ajman's acute linkup with lush greenery and fresh finds.

The masterfully crafted living spaces set the stage for an impeccable experience. Apartments designed with the highest of standards for its residents to savor, it has got the upgrades your lifestyle yearns for.



The Locale

Bluebell Residence is located right in the heart of Ajman. Close to the iconic Ajman Corniche, the property is centrally situated, with easy access to Dubai and Sharjah. With direct access to Emirates Road and Sheikh Mohammad Bin Zayed Road, it doesn't get better than this.

Coming soon next to the residence, the Al Watan University will expand its horizon to a hospitable community, right beside Al Hamidiya Park.

03 Min.

Al Hamediya Park

10 Min.

Ajman City Center

15 Min.

Ajman Beach

15 Min.

Al Zorah Natural Reserve

20 Min.

Al Amina Hospital

20 Min.

Sharjah
International Airport

26 Min.

Dubai
International Airport



Healthclub

A flourishing active lifestyle.

State-of-the-art Health Club for Everyone.

Every dawn is a new challenge for the adventurous. At the Bluebell Residence, you can nip idleness in the bud with a health club that has all the latest equipment at your disposal.





Reception

Project Features



The Arabian Gulf ecosystem is the place to be. Bluebell Residence is the perfect starting point for residents, investors, and enthusiasts alike who are looking for a haven in Ajman.

- Located at Al Ameera
- 1 & 2 Bedrooms
- Spacious Apartments
- Freehold Residential Property
- Easy & Long Term Payment Plans
- No Interest
- No Commission
- Direct from Developer
- Easy Access to Dubai & Ras Al Khaimah
- Exclusive Health Club Access



Lift Lobby



Corridor



Kitchen



Living Room



Master Bedroom



Bathroom

Invest in Ajman



No Registration Cost,
Flexible Payment Plans,
Minimum Maintenance Fee.

Bluebell Residence is the next best investment opportunity in the UAE. It boasts a strategic location, growing population, safety and security, and low cost of living. Close to offices, schools, shopping malls, and the public transportation network, Bluebell Residence is an ideal investment opportunity with exceptional returns. Build your future and protect your portfolio, with low maintenance costs and high appreciation in value.

Financial Factors

0%

Registration Cost

100%

Freehold

Flexible

Payment Plans

Minimum

Maintenance Fee



Social Factors

Strategic Location

Growing Population

Safety & Security

Low Living Costs



Payment Plan

5% Down Payment

07 Years Payment Plan

Starting Price

1-Bedroom

AED 496,000

2-Bedroom

AED 682,000

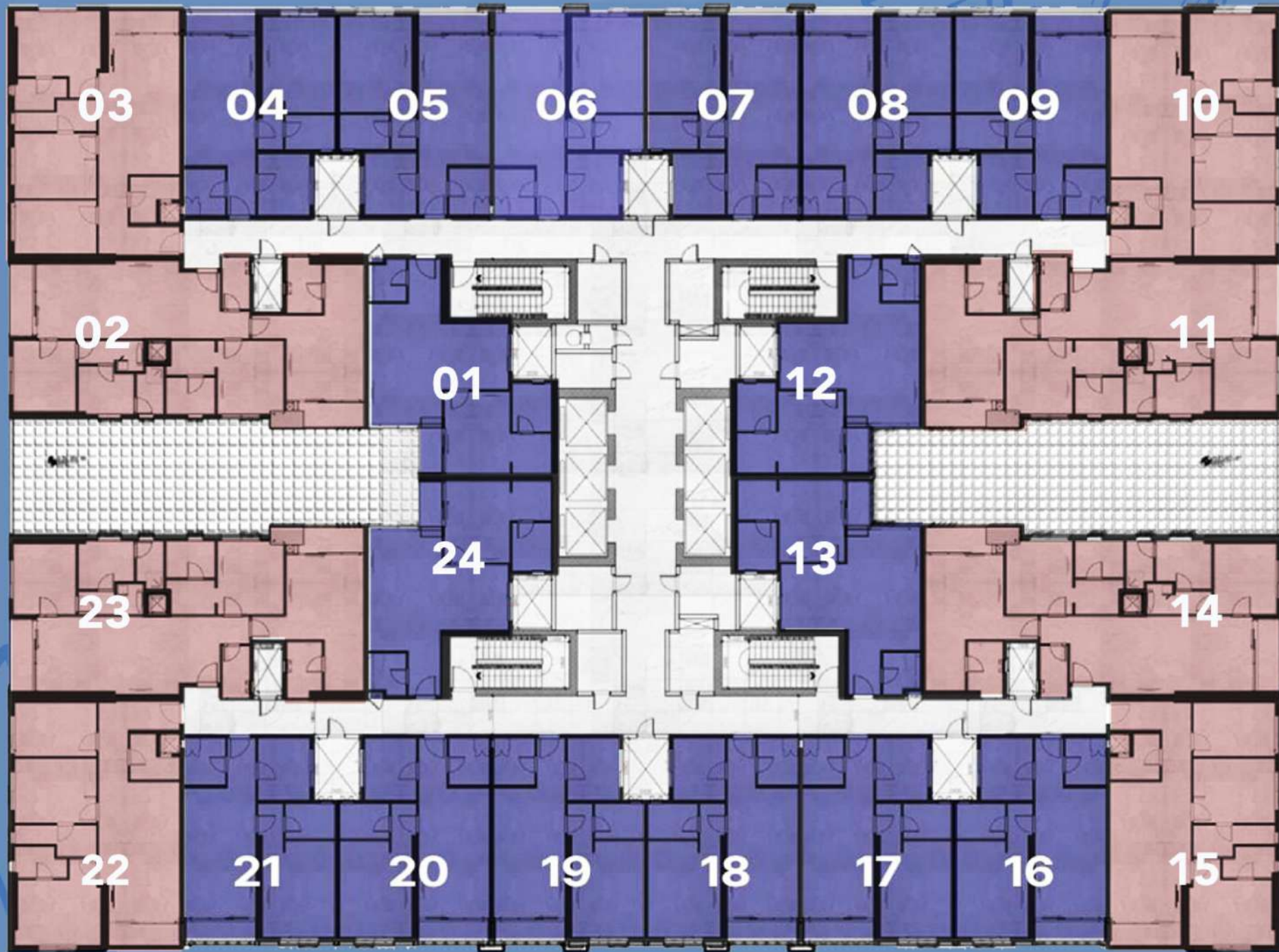
Floor Plans

Typical Floor Plan

Shiekh Zayed Street View

Road View

Al Watan University



Emirates City View

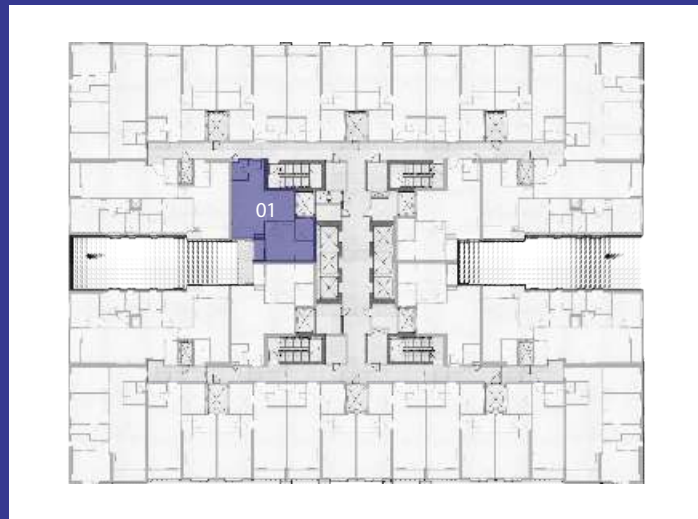
Bluebell

RESIDENCE

1 Bedroom Apartment

SERIES: 01

SIZES	SQM	SQFT
1BHK	109.08	1174.21



Disclaimer:

1. All materials, finishes, dimensions and drawings are approximate.
2. Information is subject to change without notice.
3. Actual suite area may vary from the stated area.
4. Drawings are not to scale.
5. The Developer reserves the right to make revisions/alterations without any liability whatsoever.

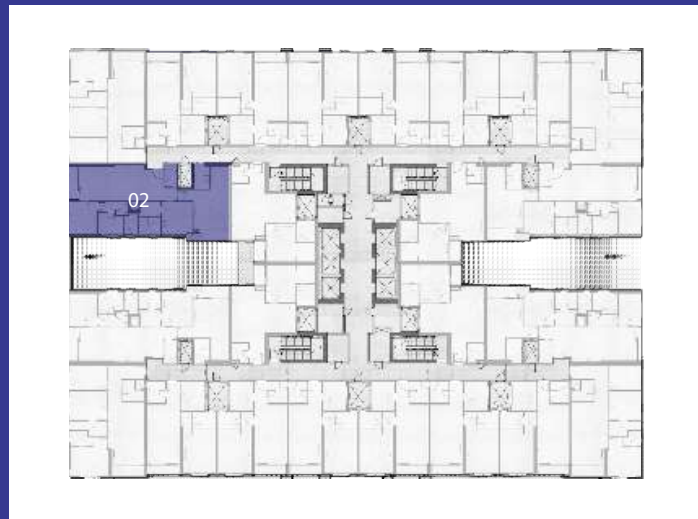
Bluebell

RESIDENCE

2 Bedroom Apartment

SERIES: 02

SIZES	SQM	SQFT
1BHK	206.90	2227.14



Disclaimer:

1. All materials, finishes, dimensions and drawings are approximate.
2. Information is subject to change without notice.
3. Actual suite area may vary from the stated area.
4. Drawings are not to scale.
5. The Developer reserves the right to make revisions/alterations without any liability whatsoever.

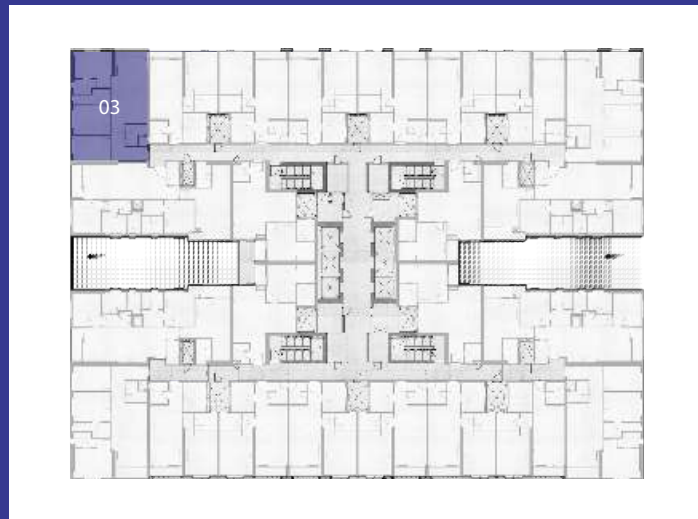
Bluebell

RESIDENCE

2 Bedroom Apartment

SERIES: 03

SIZES	SQM	SQFT
1BHK	161.51	1738.53



Disclaimer:

1. All materials, finishes, dimensions and drawings are approximate.
2. Information is subject to change without notice.
3. Actual suite area may vary from the stated area.
4. Drawings are not to scale.
5. The Developer reserves the right to make revisions/alterations without any liability whatsoever.

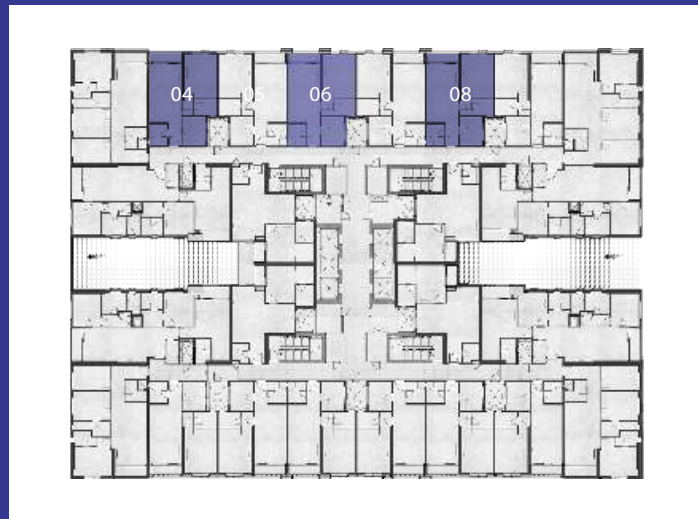
Bluebell

RESIDENCE

1 Bedroom Apartment

SERIES: 04,06,08

SERIES	SIZES	SQM	SQFT
04	1BHK	114.45	1231.94
06	1BHK	114.72	1234.94
08	1BHK	114.72	1234.94



Disclaimer:

1. All materials, finishes, dimensions and drawings are approximate.
2. Information is subject to change without notice.
3. Actual suite area may vary from the stated area.
4. Drawings are not to scale.
5. The Developer reserves the right to make revisions/alterations without any liability whatsoever.



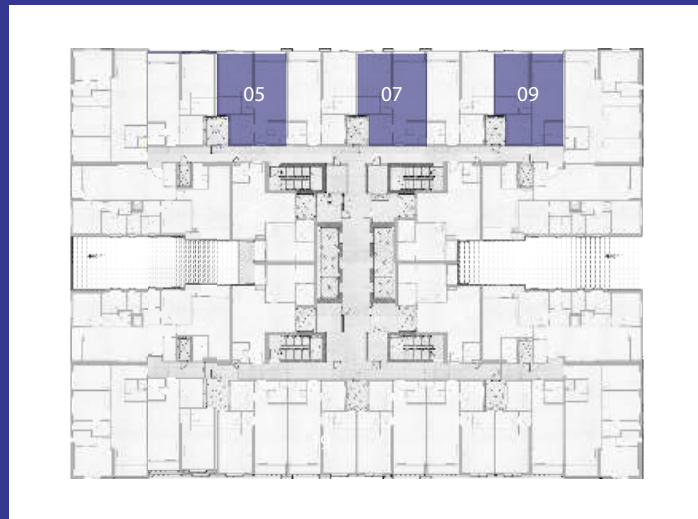
Bluebell

RESIDENCE

1 Bedroom Apartment

SERIES: 05,07,09

SERIES	SIZES	SQM	SQFT
05	1BHK	114.72	1234.94
07	1BHK	114.72	1234.94
09	1BHK	114.45	1231.94



Disclaimer:

1. All materials, finishes, dimensions and drawings are approximate.
2. Information is subject to change without notice.
3. Actual suite area may vary from the stated area.
4. Drawings are not to scale.
5. The Developer reserves the right to make revisions/alterations without any liability whatsoever.

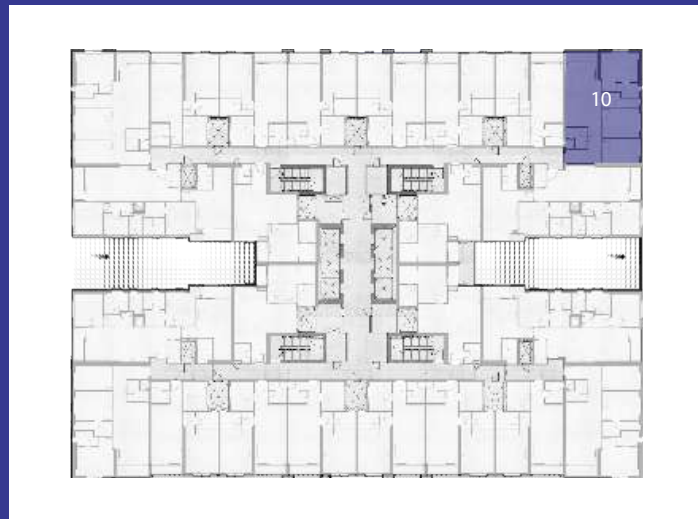
Bluebell

RESIDENCE

2 Bedroom Apartment

SERIES: 10

SIZES	SQM	SQFT
2BHK	161.51	1738.53



Disclaimer:

1. All materials, finishes, dimensions and drawings are approximate.
2. Information is subject to change without notice.
3. Actual suite area may vary from the stated area.
4. Drawings are not to scale.
5. The Developer reserves the right to make revisions/alterations without any liability whatsoever.

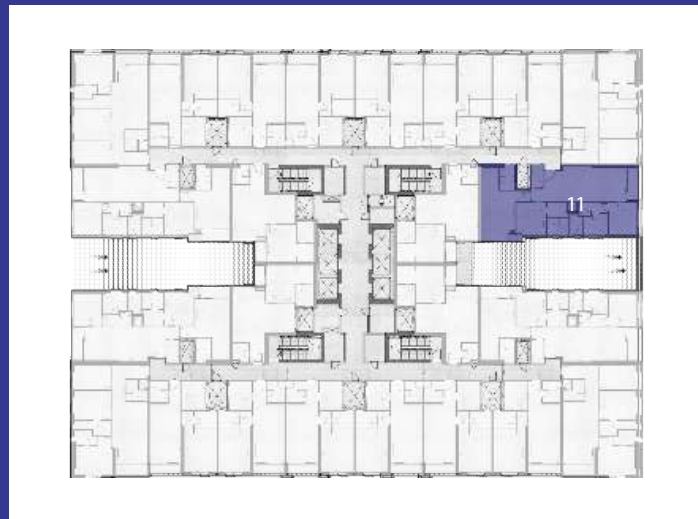
Bluebell

RESIDENCE

2 Bedroom Apartment

SERIES: 11

SIZES	SQM	SQFT
2 BHK	206.9	2227.14



Disclaimer:

1. All materials, finishes, dimensions and drawings are approximate.
2. Information is subject to change without notice.
3. Actual suite area may vary from the stated area.
4. Drawings are not to scale.
5. The Developer reserves the right to make revisions/alterations without any liability whatsoever.

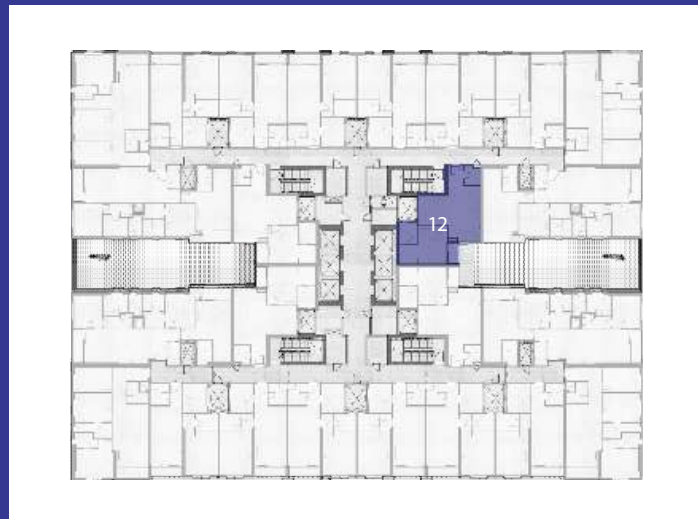
Bluebell

RESIDENCE

1 Bedroom Apartment

SERIES: 12

SIZES	SQM	SQFT
1 BHK	109.08	1174.21



Disclaimer:

1. All materials, finishes, dimensions and drawings are approximate.
2. Information is subject to change without notice.
3. Actual suite area may vary from the stated area.
4. Drawings are not to scale.
5. The Developer reserves the right to make revisions/alterations without any liability whatsoever.

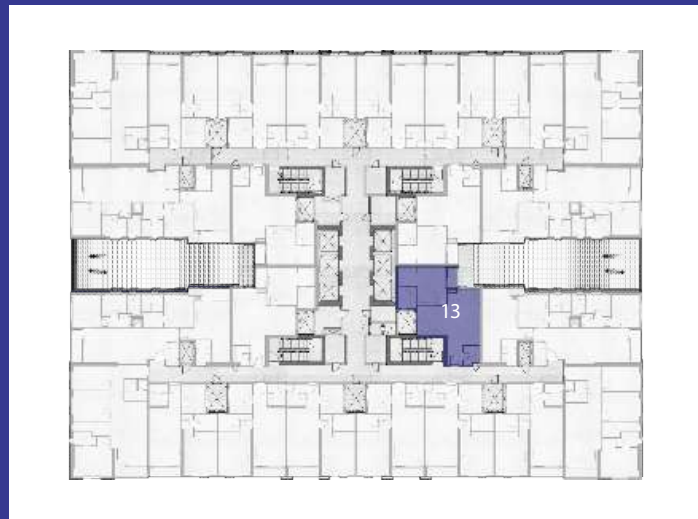
Bluebell

RESIDENCE

1 Bedroom Apartment

SERIES: 13

SIZES	SQM	SQFT
1 BHK	109.08	1174.21



Disclaimer:

1. All materials, finishes, dimensions and drawings are approximate.
2. Information is subject to change without notice.
3. Actual suite area may vary from the stated area.
4. Drawings are not to scale.
5. The Developer reserves the right to make revisions/alterations without any liability whatsoever.

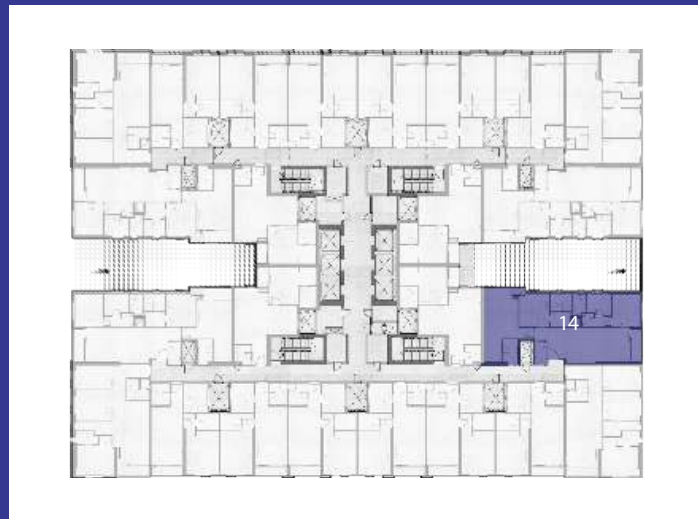
Bluebell

RESIDENCE

2 Bedroom Apartment

SERIES: 14

SIZES	SQM	SQFT
2 BHK	206.9	2227.14



Disclaimer:

1. All materials, finishes, dimensions and drawings are approximate.
2. Information is subject to change without notice.
3. Actual suite area may vary from the stated area.
4. Drawings are not to scale.
5. The Developer reserves the right to make revisions/alterations without any liability whatsoever.



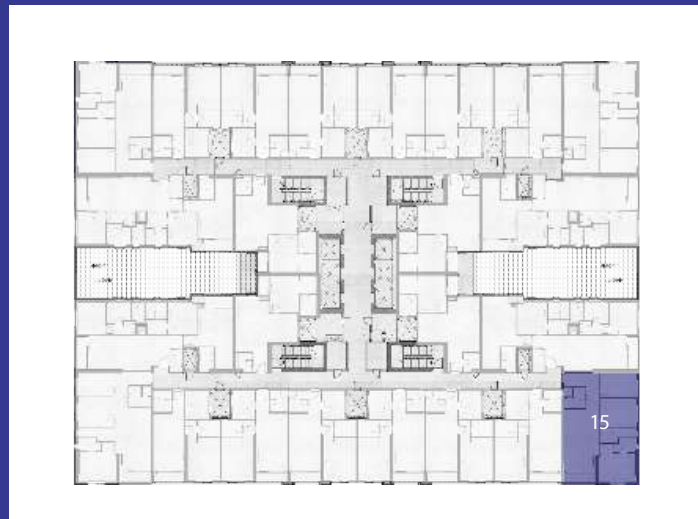
Bluebell

RESIDENCE

2 Bedroom Apartment

SERIES: 15

SIZES	SQM	SQFT
1 BHK	164.79	1773.86



Disclaimer:

1. All materials, finishes, dimensions and drawings are approximate.
2. Information is subject to change without notice.
3. Actual suite area may vary from the stated area.
4. Drawings are not to scale.
5. The Developer reserves the right to make revisions/alterations without any liability whatsoever.

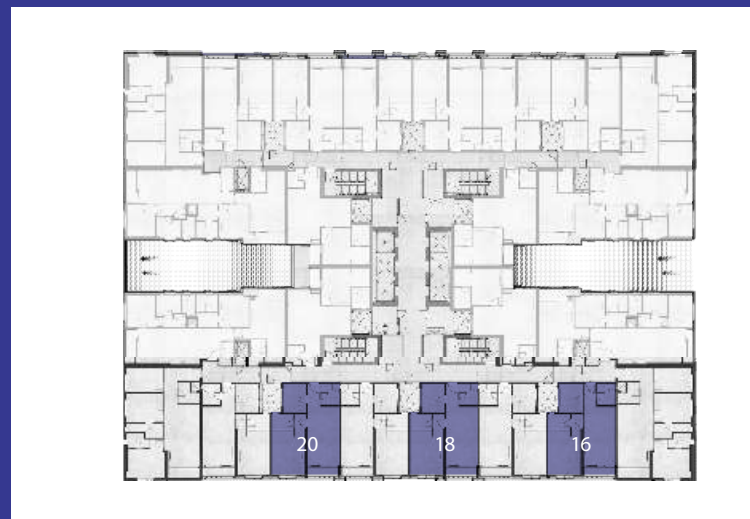
Bluebell

RESIDENCE

1 Bedroom Apartment

SERIES: 16,18,20

SERIES	SIZES	SQM	SQFT
16	1BHK	116.76	1256.86
18	1BHK	117.63	1266.16
20	1BHK	117.13	1260.80



Disclaimer:

1. All materials, finishes, dimensions and drawings are approximate.
2. Information is subject to change without notice.
3. Actual suite area may vary from the stated area.
4. Drawings are not to scale.
5. The Developer reserves the right to make revisions/alterations without any liability whatsoever.

Bluebell

RESIDENCE

1 Bedroom Apartment

SERIES: 17, 19, 21

SERIES	SIZES	SQM	SQFT
17	1BHK	117.13	1260.80
19	1BHK	117.63	1266.16
21	1BHK	116.76	1256.86



Disclaimer:

1. All materials, finishes, dimensions and drawings are approximate.
2. Information is subject to change without notice.
3. Actual suite area may vary from the stated area.
4. Drawings are not to scale.
5. The Developer reserves the right to make revisions/alterations without any liability whatsoever.

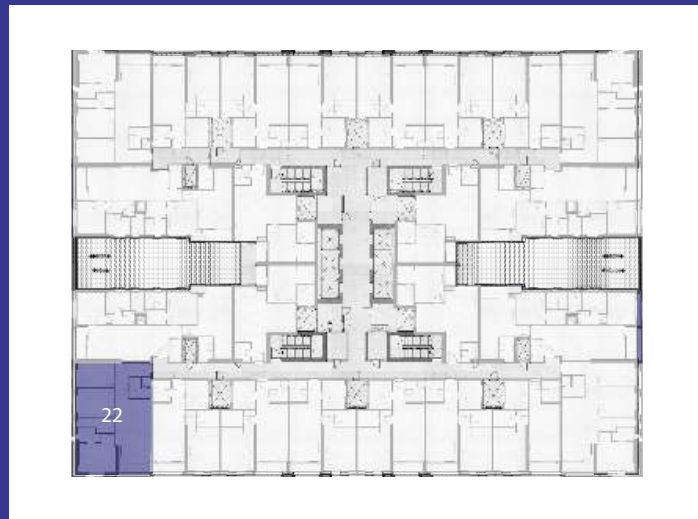
Bluebell

RESIDENCE

2 Bedroom Apartment

SERIES: 22

SIZES	SQM	SQFT
2BHK	164.79	1773.86



Disclaimer:

1. All materials, finishes, dimensions and drawings are approximate.
2. Information is subject to change without notice.
3. Actual suite area may vary from the stated area.
4. Drawings are not to scale.
5. The Developer reserves the right to make revisions/alterations without any liability whatsoever.



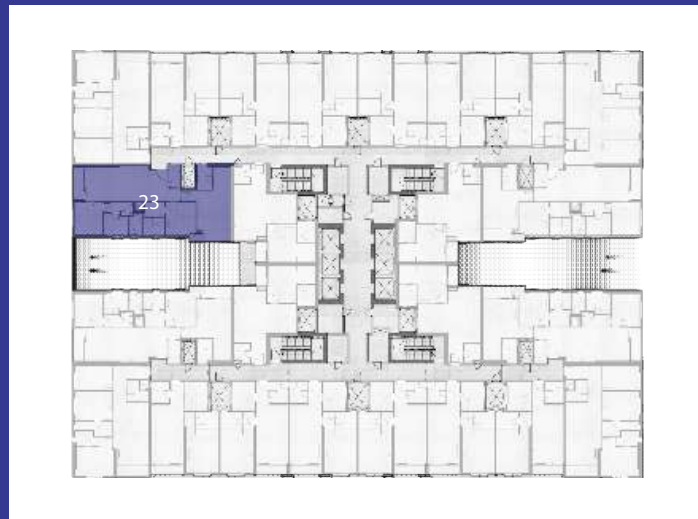
Bluebell

RESIDENCE

2 Bedroom Apartment

SERIES: 23

SIZES	SQM	SQFT
2BHK	206.90	2227.14



Disclaimer:

1. All materials, finishes, dimensions and drawings are approximate.
2. Information is subject to change without notice.
3. Actual suite area may vary from the stated area.
4. Drawings are not to scale.
5. The Developer reserves the right to make revisions/alterations without any liability whatsoever.

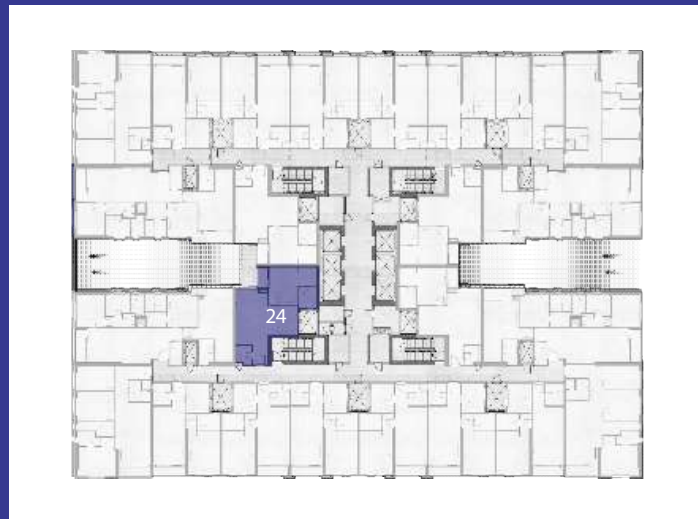
Bluebell

RESIDENCE

1 Bedroom Apartment

SERIES: 24

SIZES	SQM	SQFT
1 BHK	109.08	1174.21



Disclaimer:

- 1. All materials, finishes, dimensions and drawings are approximate.
- 2. Information is subject to change without notice.
- 3. Actual suite area may vary from the stated area.
- 4. Drawings are not to scale.
- 5. The Developer reserves the right to make revisions/alterations without any liability whatsoever.





جي با العقارية P R O P E R T I E S

GJ Properties is an Ajman-based real estate developer, established in 1998. One of the largest and fastest growing providers of residential, commercial, and industrial properties in Ajman, GJ Properties with over 20 years of experience, has been recognized as the 'Best Real Estate Agency' by the Arabian Property Awards 2020-21.

The organization has consistently demonstrated its commitment to providing clients with truly unique offerings across all parameters of construction and in every aspect of its business. GJ Properties was formed to develop real estate solutions that not only meet but exceed client expectations - whether it is investment or lifestyle.

The foundation of GJ Properties is the belief that all customers deserve the best service possible.

This drive has pushed the entity to work harder towards offering great projects at affordable prices. Having launched various properties in Ajman, including villas, apartments, and other large-scale projects, GJ Properties has been consistently achieving great success.

GJ Properties focused team of highly qualified engineers, architects, and construction personnel demonstrates their superior performance in the real estate industry. Stemming from building and maintaining high-quality homes and developments, their design principles are rooted deeply in understanding comfort and convenience - all emerging from a core of ergonomics.

Whether a rental property or a beachfront home, GJ Properties expert team will create exactly what a thriving community needs. GJ Real Estate ensures every property they develop shall provide comfort and convenience for years to come – even with the changing trends of modern architecture. Devoted to creating homes for generations, GJ Properties has built an elegant legacy of providing the best in quality construction standards and only excellence in customer service.



Head Office:
Ground Floor, Oasis Tower 2,
Sheikh Rashid Bin Saeed Al Maktoum Street,
Ajman, UAE

Phone: +971 6 741 4478
Toll Free: 800 GJAJM (45256)
Email: info@gjproperties.ae
Website: www.gjproperties.ae

Bluebell
RESIDENCE