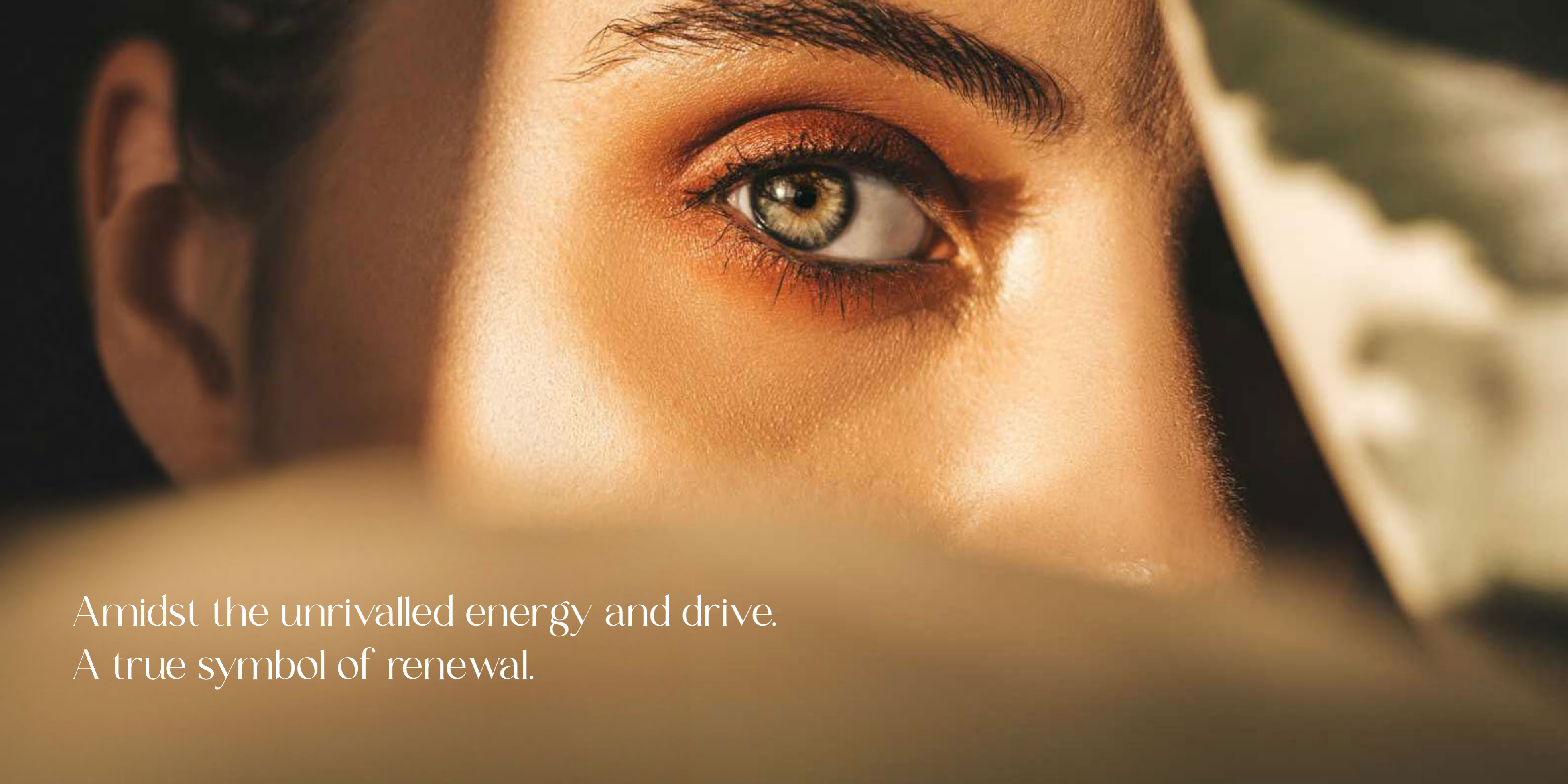


BINGHATTI  
HAVEN

FLOOR PLAN



Amidst the unrivalled energy and drive.  
A true symbol of renewal.

# A New Era in Dubai Sports City

Binghatti unveils Haven, its inaugural masterpiece in Dubai Sports City. A true place of its name, amidst the vibrant energy of a dynamic district. Haven is our ode to balance, a place where the pursuit of excellence provides moments of restoration and calm.







بن غاطبي  
BINGHATTI



## A Place for the Discerning

Haven is more than a residence; it's a retreat from the everyday. Step into a world where every detail is crafted to invigorate and restore. Feel the weight of the world disperse as you immerse yourself in the calm that is your own private haven.

# For Those Who Step Up

Haven is a place where likeminded individuals can find a home that reflects their aspirations, a space that inspires and revitalises to the very core.





# BINGHATTI HAVEN

Delve deeper into the design philosophy behind Haven, where every element is carefully considered to create a harmonious way of life. Discover residences crafted with exquisite materials, from the cool touch of marble to the warmth of natural wood, each a testament to Binghatti's pursuit of perfection.



# FLOOR PLAN

Discover a range of thoughtfully designed floor plans to suit your individual needs and lifestyle. From studios to expansive family residences, Haven offers a space for everyone.



بن غاط  
NGHATTI

FLOOR PLAN

# TYPICAL FLOOR PLAN 1<sup>ST</sup> FLOOR

## STUDIO

AVERAGE AREA WITHOUT BALCONY 300 - 380 ft<sup>2</sup>

AVERAGE AREA WITH BALCONY 385 - 551 ft<sup>2</sup>

## 1 BEDROOM

AVERAGE AREA WITHOUT BALCONY 585 - 658 ft<sup>2</sup>

AVERAGE AREA WITH BALCONY 774 - 975 ft<sup>2</sup>

## 2 BEDROOM

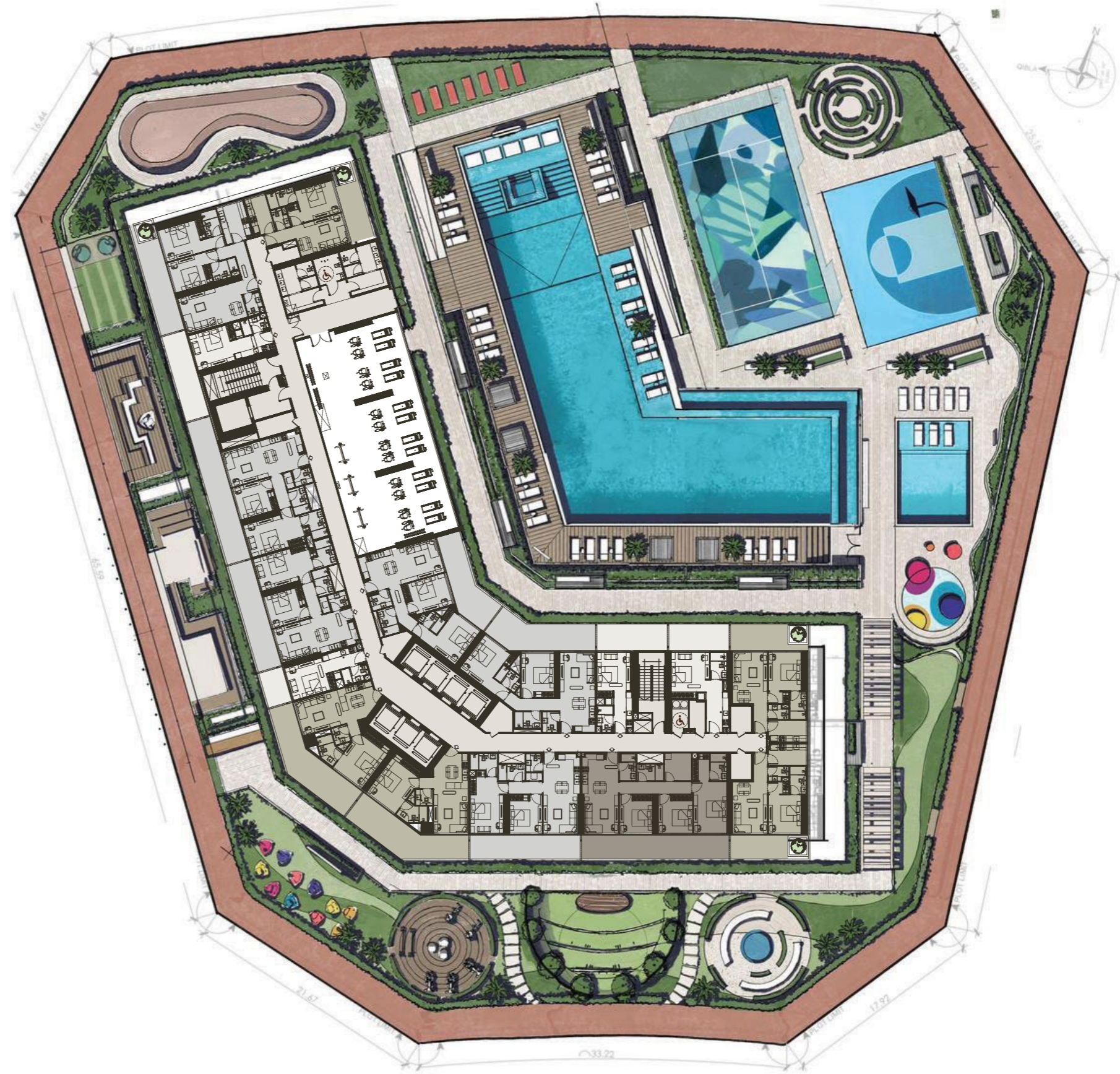
AVERAGE AREA WITHOUT BALCONY 903 - 988 ft<sup>2</sup>

AVERAGE AREA WITH BALCONY 1137 -1378 ft<sup>2</sup>

## 3 BEDROOM

AVERAGE AREA WITHOUT BALCONY 1218 ft<sup>2</sup>

AVERAGE AREA WITH BALCONY 1557 - 1609 ft<sup>2</sup>



# TYPICAL FLOOR PLAN 2<sup>ND</sup> FLOOR

## STUDIO

AVERAGE AREA WITHOUT BALCONY **300 - 380 ft<sup>2</sup>**

AVERAGE AREA WITH BALCONY **385 - 551 ft<sup>2</sup>**

## 1 BEDROOM

AVERAGE AREA WITHOUT BALCONY **585 - 658 ft<sup>2</sup>**

AVERAGE AREA WITH BALCONY **774 - 975 ft<sup>2</sup>**

## 2 BEDROOM

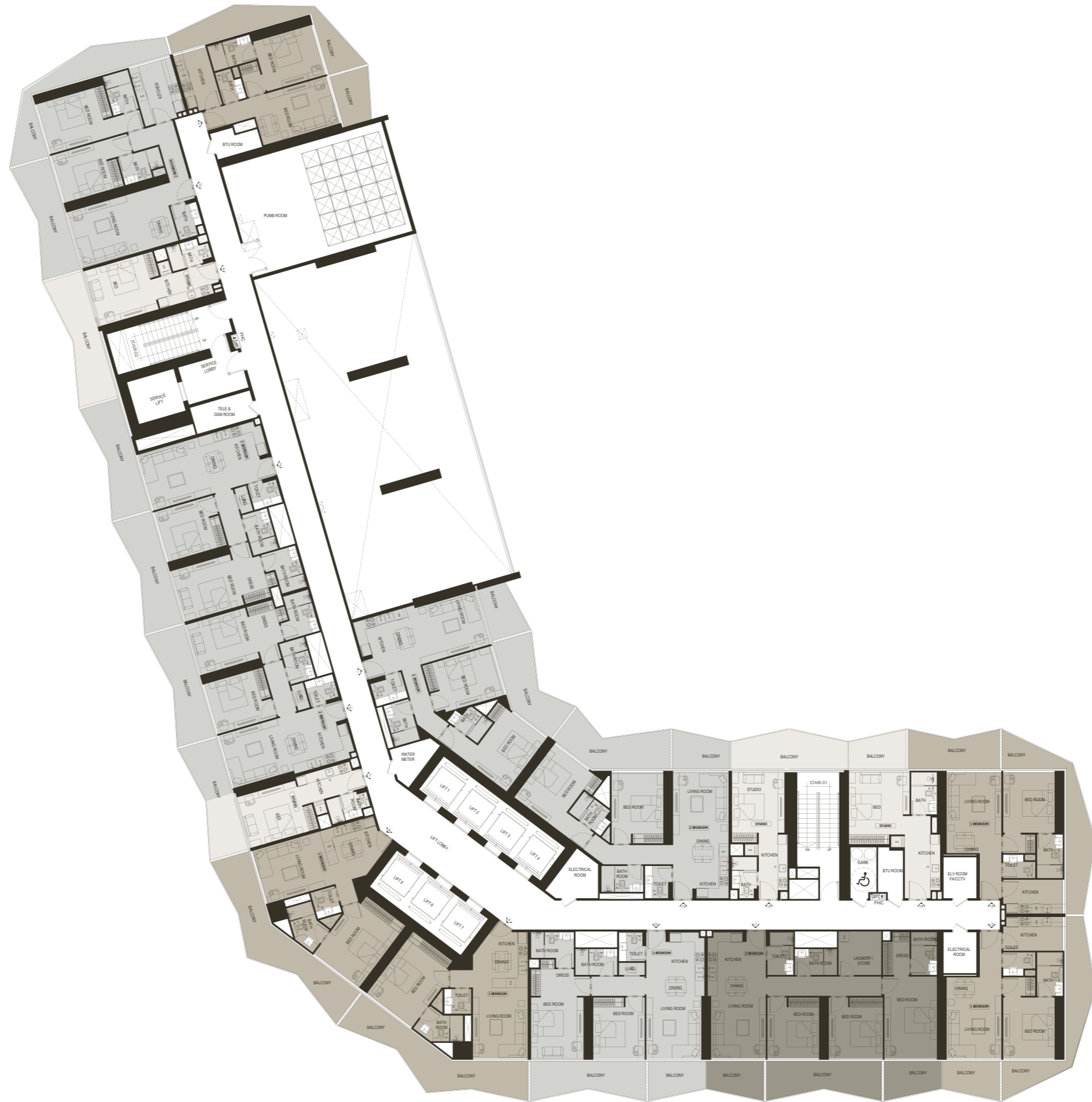
AVERAGE AREA WITHOUT BALCONY **903 - 988 ft<sup>2</sup>**

AVERAGE AREA WITH BALCONY **1137 -1378 ft<sup>2</sup>**

## 3 BEDROOM

AVERAGE AREA WITHOUT BALCONY **1218 ft<sup>2</sup>**

AVERAGE AREA WITH BALCONY **1557 - 1609 ft<sup>2</sup>**



# TYPICAL FLOOR PLAN 3<sup>RD</sup> - 15<sup>TH</sup> FLOOR

3 | 5 | 7 | 9 | 11 | 13 | 15

## STUDIO

AVERAGE AREA WITHOUT BALCONY **300 - 380 ft<sup>2</sup>**

AVERAGE AREA WITH BALCONY **385 - 551 ft<sup>2</sup>**

## 1 BEDROOM

AVERAGE AREA WITHOUT BALCONY **585 - 658 ft<sup>2</sup>**

AVERAGE AREA WITH BALCONY **774 - 975 ft<sup>2</sup>**

## 2 BEDROOM

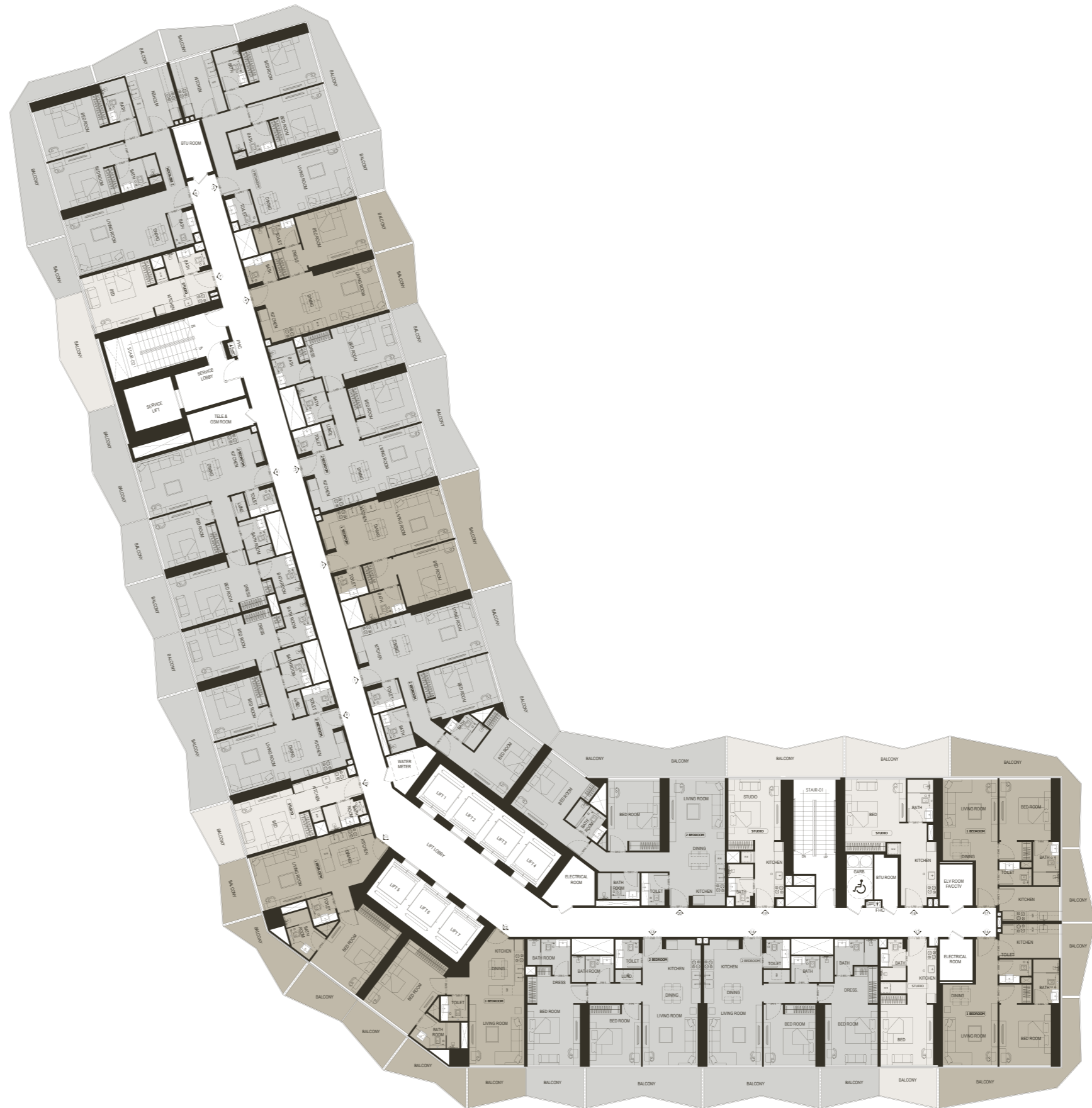
AVERAGE AREA WITHOUT BALCONY **903 - 988 ft<sup>2</sup>**

AVERAGE AREA WITH BALCONY **1137 -1378 ft<sup>2</sup>**

## 3 BEDROOM

AVERAGE AREA WITHOUT BALCONY **1218 ft<sup>2</sup>**

AVERAGE AREA WITH BALCONY **1557 - 1609 ft<sup>2</sup>**



# TYPICAL FLOOR PLAN 4<sup>TH</sup> - 14<sup>TH</sup> FLOOR

4 | 6 | 8 | 10 | 12 | 14

## STUDIO

AVERAGE AREA WITHOUT BALCONY **300 - 380 ft<sup>2</sup>**

AVERAGE AREA WITH BALCONY **385 - 551 ft<sup>2</sup>**

## 1 BEDROOM

AVERAGE AREA WITHOUT BALCONY **585 - 658 ft<sup>2</sup>**

AVERAGE AREA WITH BALCONY **774 - 975 ft<sup>2</sup>**

## 2 BEDROOM

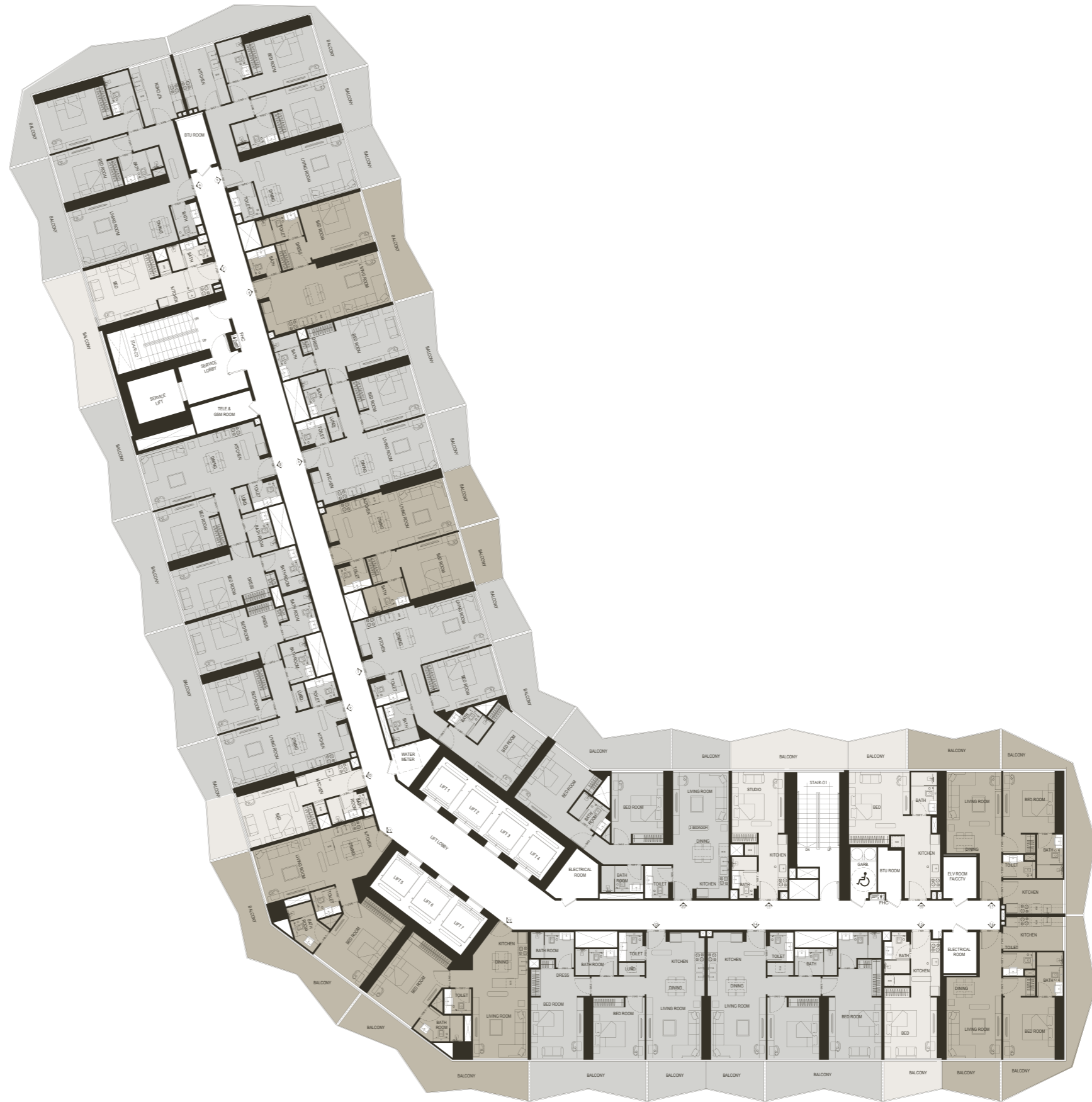
AVERAGE AREA WITHOUT BALCONY **903 - 988 ft<sup>2</sup>**

AVERAGE AREA WITH BALCONY **1137 -1378 ft<sup>2</sup>**

## 3 BEDROOM

AVERAGE AREA WITHOUT BALCONY **1218 ft<sup>2</sup>**

AVERAGE AREA WITH BALCONY **1557 - 1609 ft<sup>2</sup>**



# TYPICAL FLOOR PLAN 16<sup>TH</sup> - 26<sup>TH</sup> FLOOR

16 | 18 | 20 | 22 | 24 | 26

## STUDIO

AVERAGE AREA WITHOUT BALCONY **300 - 380 ft<sup>2</sup>**

AVERAGE AREA WITH BALCONY **385 - 551 ft<sup>2</sup>**

## 1 BEDROOM

AVERAGE AREA WITHOUT BALCONY **585 - 658 ft<sup>2</sup>**

AVERAGE AREA WITH BALCONY **774 - 975 ft<sup>2</sup>**

## 2 BEDROOM

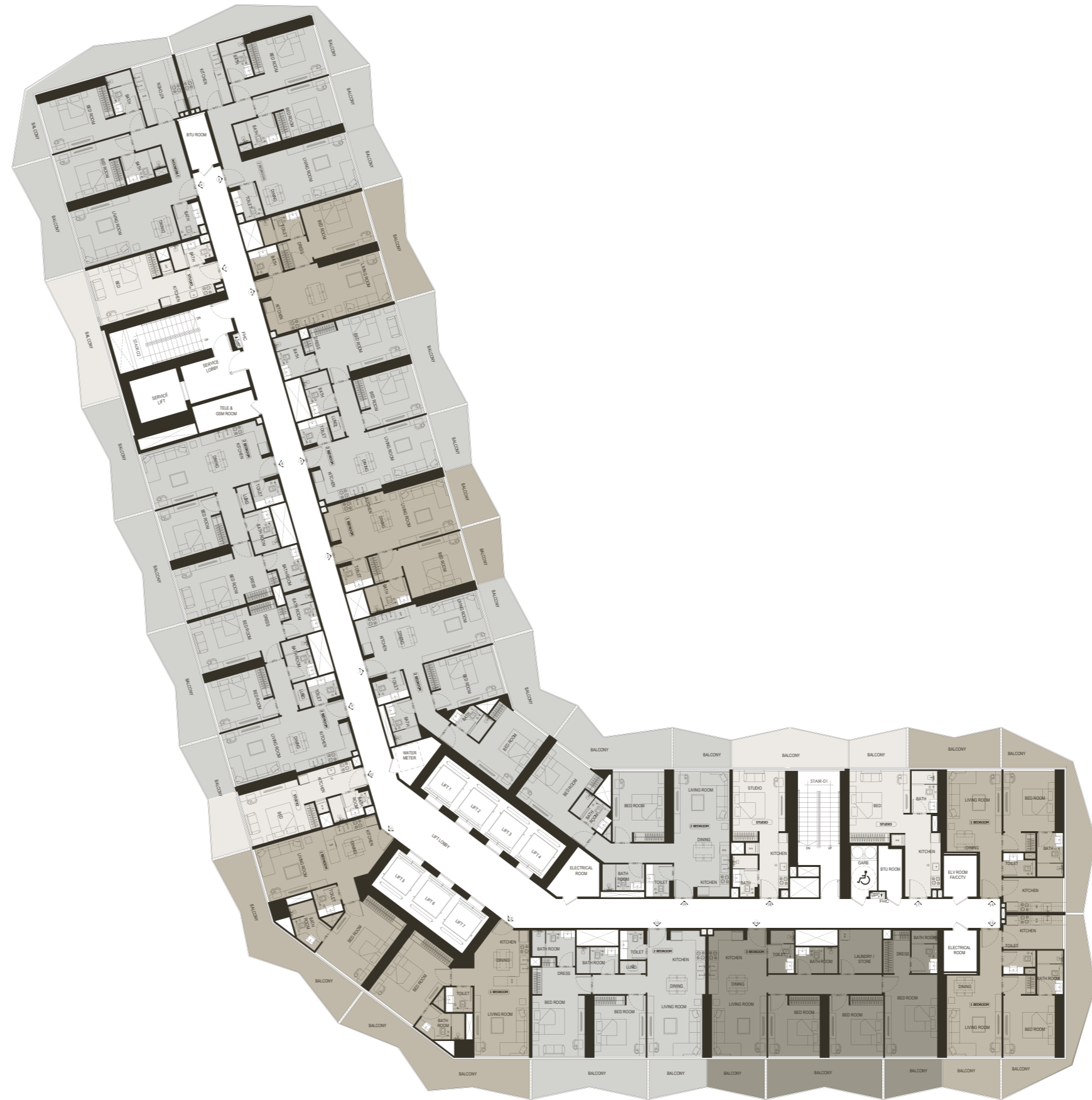
AVERAGE AREA WITHOUT BALCONY **903 - 988 ft<sup>2</sup>**

AVERAGE AREA WITH BALCONY **1137 -1378 ft<sup>2</sup>**

## 3 BEDROOM

AVERAGE AREA WITHOUT BALCONY **1218 ft<sup>2</sup>**

AVERAGE AREA WITH BALCONY **1557 - 1609 ft<sup>2</sup>**



# TYPICAL FLOOR PLAN 17<sup>TH</sup> - 25<sup>TH</sup> FLOOR

17 | 19 | 21 | 23 | 25

## STUDIO

AVERAGE AREA WITHOUT BALCONY **300 - 380 ft<sup>2</sup>**

AVERAGE AREA WITH BALCONY **385 - 551 ft<sup>2</sup>**

## 1 BEDROOM

AVERAGE AREA WITHOUT BALCONY **585 - 658 ft<sup>2</sup>**

AVERAGE AREA WITH BALCONY **774 - 975 ft<sup>2</sup>**

## 2 BEDROOM

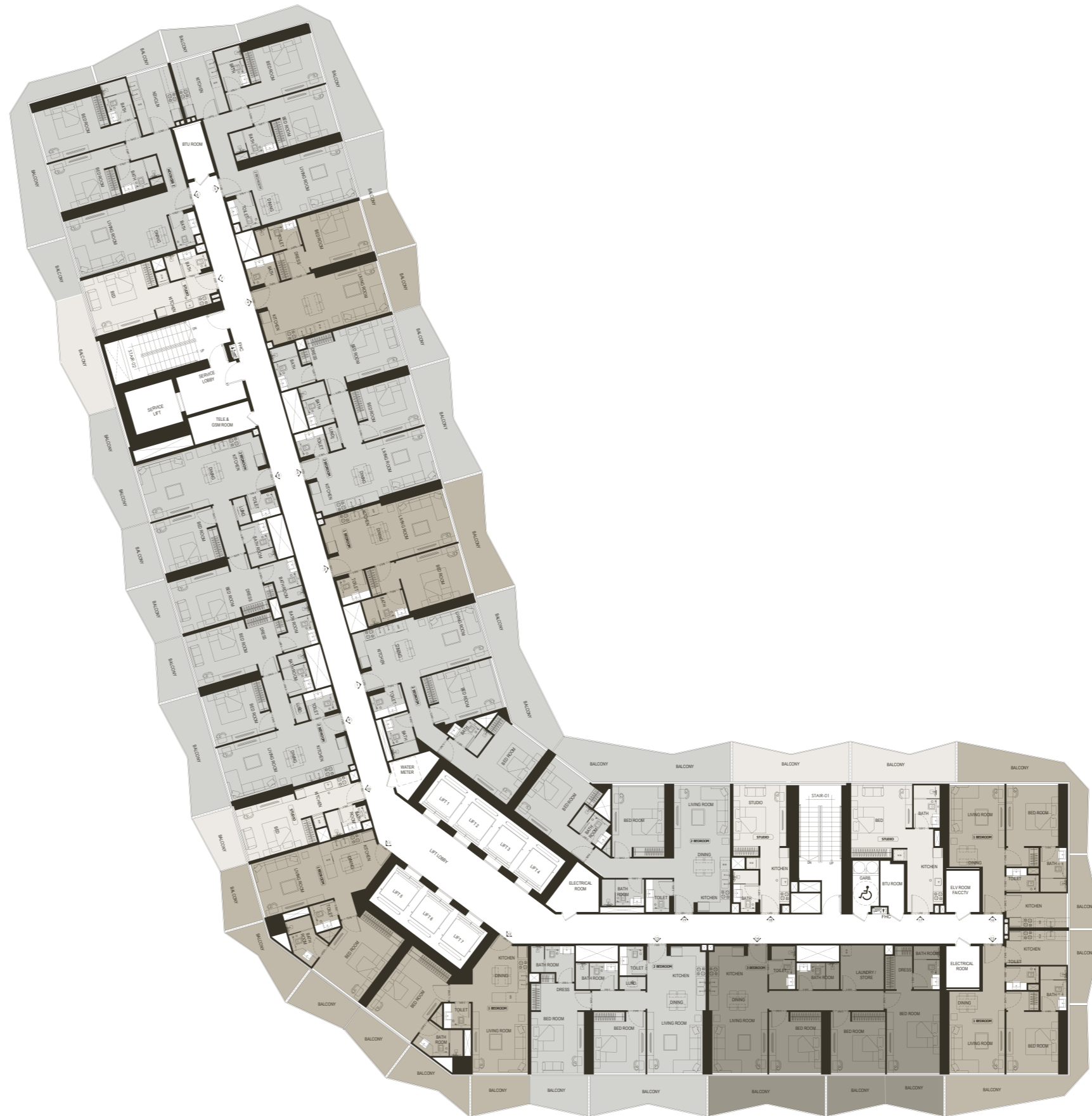
AVERAGE AREA WITHOUT BALCONY **903 - 988 ft<sup>2</sup>**

AVERAGE AREA WITH BALCONY **1137 -1378 ft<sup>2</sup>**

## 3 BEDROOM

AVERAGE AREA WITHOUT BALCONY **1218 ft<sup>2</sup>**

AVERAGE AREA WITH BALCONY **1557 - 1609 ft<sup>2</sup>**



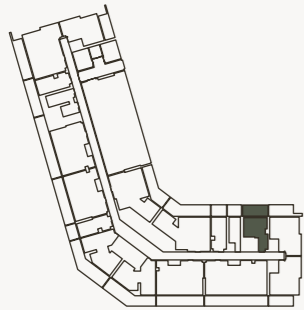






# STUDIO

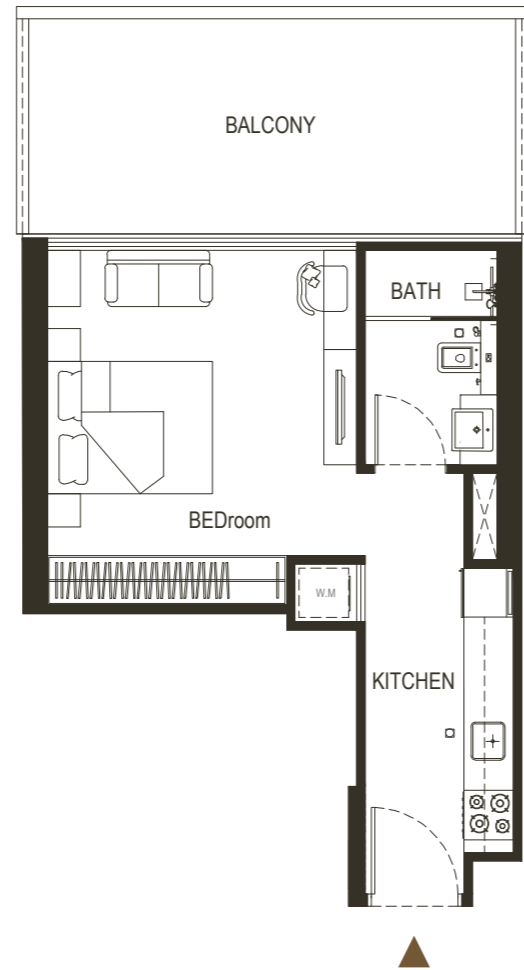
TYPE - 1



AREA	SQ.M	SQ.FT
SUITE AREA	35.35 m <sup>2</sup>	380 ft <sup>2</sup>
BALCONY AREA	26.21 m <sup>2</sup>	282.12 ft <sup>2</sup>
TOTAL UNIT AREA	61.56 m <sup>2</sup>	662.62 ft <sup>2</sup>

### FLAT DESIGN COMPONENTS

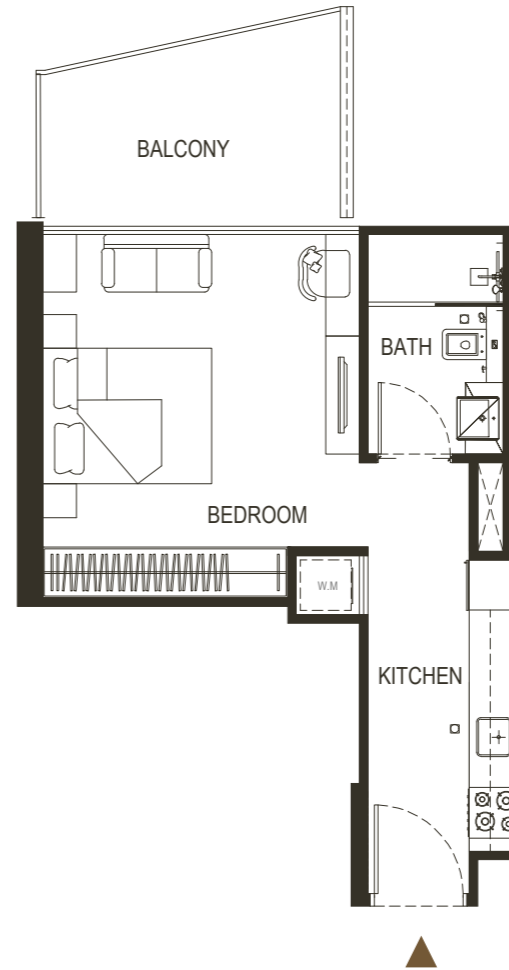
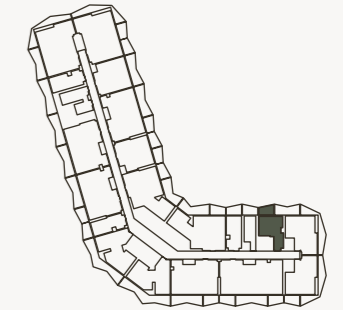
BATH	4 m <sup>2</sup>
STUDIO	17 m <sup>2</sup>
LAUNDRY	1 m <sup>2</sup>
KITCHEN	7 m <sup>2</sup>



Disclaimer: 1. All stated dimensions and services whether in relation to the building, common areas or individual units are subject to government and local authority approvals. Final dimensions and services will be stated in your sales and purchase agreement 2. All room dimensions are measured to structural elements and exclude wall finishes and construction tolerances. 3. All dimensions have been provided by our consultant architects. 4. All materials, dimensions and drawings are approximate. Information is subject to change without notice. 5. Actual suite area may vary from the stated area. Drawings are not to scale. The Developer reserves the right to make any revisions whatsoever including for aesthetic purposes.

# STUDIO

TYPE - 2



6. Calculation of suite area is measured as the area bounded by the centre line of demising or partition walls separating one unit from another unit, the exterior face of all exterior walls, and the exterior face of the corridor wall enclosing the adjoining unit. 7. Calculation of balcony area is measured as the area bounded by the centre line of demising or partition walls separating one unit from another unit, the outmost face of the enclosing guard and the external face of the adjoining balcony. 8. The units are measured at typical floor in the building. Columns may vary in size depending on the floor level. 9. For each unit type, unit sizes and details might be different and your sales and purchase agreement will contain the actual size of each specific unit.

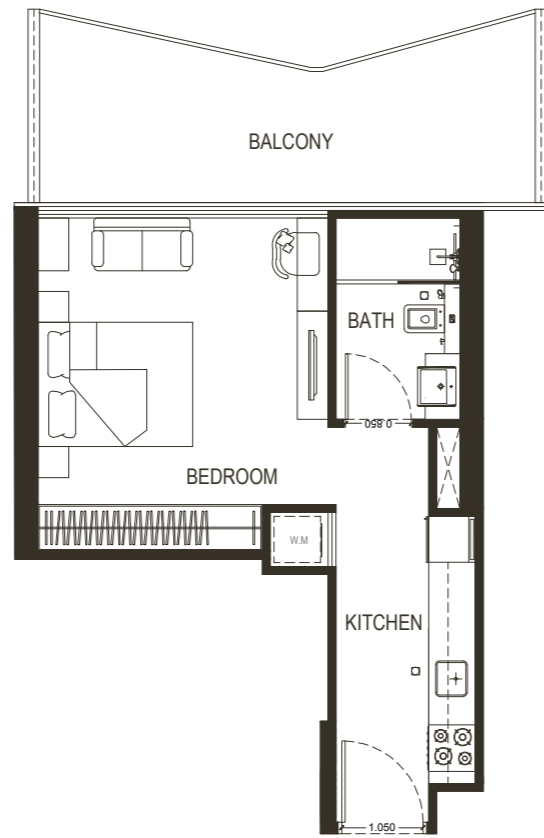
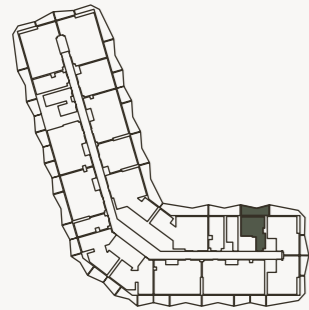
AREA	SQ.M	SQ.FT
SUITE AREA	35.18 m <sup>2</sup>	378.67 ft <sup>2</sup>
BALCONY AREA	16.03 m <sup>2</sup>	172.55 ft <sup>2</sup>
TOTAL UNIT AREA	51.21 m <sup>2</sup>	551.21 ft <sup>2</sup>

### FLAT DESIGN COMPONENTS

BATH	4 m <sup>2</sup>
STUDIO	17 m <sup>2</sup>
LAUNDRY	1 m <sup>2</sup>
KITCHEN	7 m <sup>2</sup>

# STUDIO

TYPE - 3



AREA	SQ.M	SQ.FT
SUITE AREA	35.24 m <sup>2</sup>	379.32 ft <sup>2</sup>
BALCONY AREA	14.47 m <sup>2</sup>	155.75 ft <sup>2</sup>
TOTAL UNIT AREA	49.71 m <sup>2</sup>	535.07 ft <sup>2</sup>

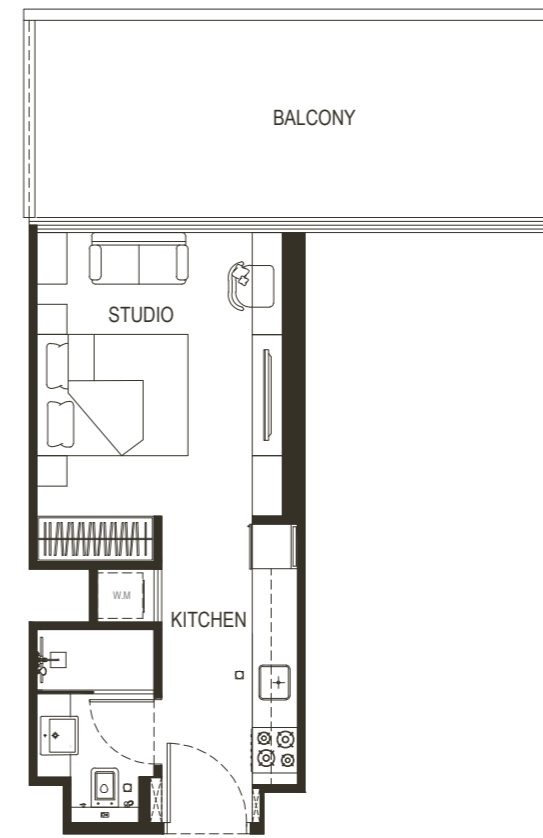
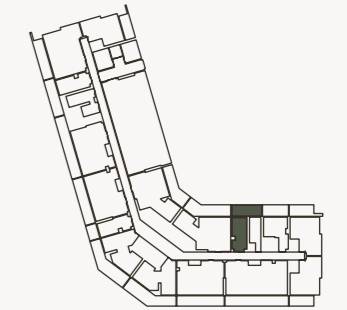
## FLAT DESIGN COMPONENTS

BATH	4 m <sup>2</sup>
STUDIO	17 m <sup>2</sup>
LAUNDRY	1 m <sup>2</sup>
KITCHEN	7 m <sup>2</sup>

Disclaimer: 1. All stated dimensions and services whether in relation to the building, common areas or individual units are subject to government and local authority approvals. Final dimensions and services will be stated in your sales and purchase agreement 2. All room dimensions are measured to structural elements and exclude wall finishes and construction tolerances. 3. All dimensions have been provided by our consultant architects. 4. All materials, dimensions and drawings are approximate. Information is subject to change without notice. 5. Actual suite area may vary from the stated area. Drawings are not to scale. The Developer reserves the right to make any revisions whatsoever including for aesthetic purposes.

# STUDIO

TYPE - 4



AREA	SQ.M	SQ.FT
SUITE AREA	29.05 m <sup>2</sup>	312.69 ft <sup>2</sup>
BALCONY AREA	10.07 m <sup>2</sup>	108.39 ft <sup>2</sup>
TOTAL UNIT AREA	39.12 m <sup>2</sup>	421.08 ft <sup>2</sup>

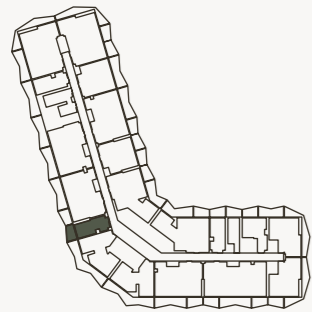
## FLAT DESIGN COMPONENTS

BATH	4 m <sup>2</sup>
STUDIO	13 m <sup>2</sup>
LAUNDRY	1 m <sup>2</sup>
KITCHEN	7 m <sup>2</sup>

6. Calculation of suite area is measured as the area bounded by the centre line of demising or partition walls separating one unit from another unit, the exterior face of all exterior walls, and the exterior face of the corridor wall enclosing the adjoining unit. 7. Calculation of balcony area is measured as the area bounded by the centre line of demising or partition walls separating one unit from another unit, the outmost face of the enclosing guard and the external face of the adjoining balcony. 8. The units are measured at typical floor in the building. Columns may vary in size depending on the floor level. 9. For each unit type, unit sizes and details might be different and your sales and purchase agreement will contain the actual size of each specific unit.

# STUDIO

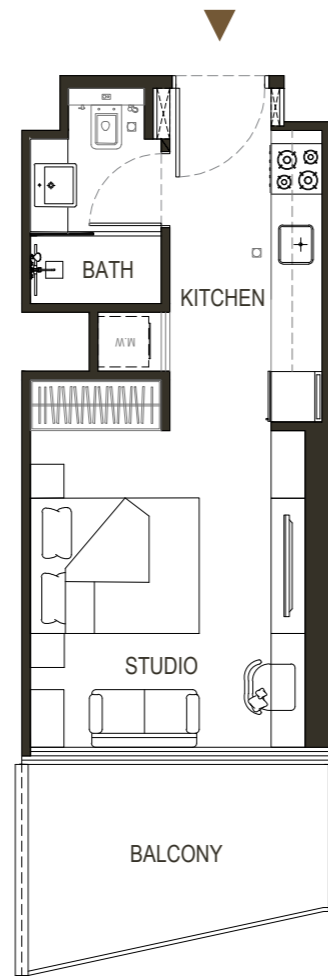
TYPE - 5



AREA	SQ.M	SQ.FT
SUITE AREA	27.91 m <sup>2</sup>	300.42 ft <sup>2</sup>
BALCONY AREA	7.93 m <sup>2</sup>	85.36 ft <sup>2</sup>
TOTAL UNIT AREA	35.84 m <sup>2</sup>	385.78 ft <sup>2</sup>

## FLAT DESIGN COMPONENTS

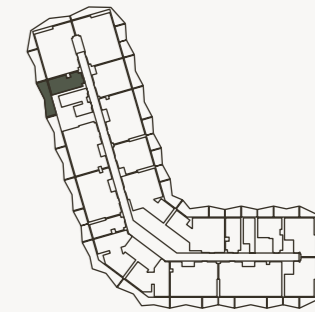
BATH	4 m <sup>2</sup>
STUDIO	13 m <sup>2</sup>
LAUNDRY	1 m <sup>2</sup>
KITCHEN	7 m <sup>2</sup>



Disclaimer: 1. All stated dimensions and services whether in relation to the building, common areas or individual units are subject to government and local authority approvals. Final dimensions and services will be stated in your sales and purchase agreement 2. All room dimensions are measured to structural elements and exclude wall finishes and construction tolerances. 3. All dimensions have been provided by our consultant architects. 4. All materials, dimensions and drawings are approximate. Information is subject to change without notice. 5. Actual suite area may vary from the stated area. Drawings are not to scale. The Developer reserves the right to make any revisions whatsoever including for aesthetic purposes.

# STUDIO

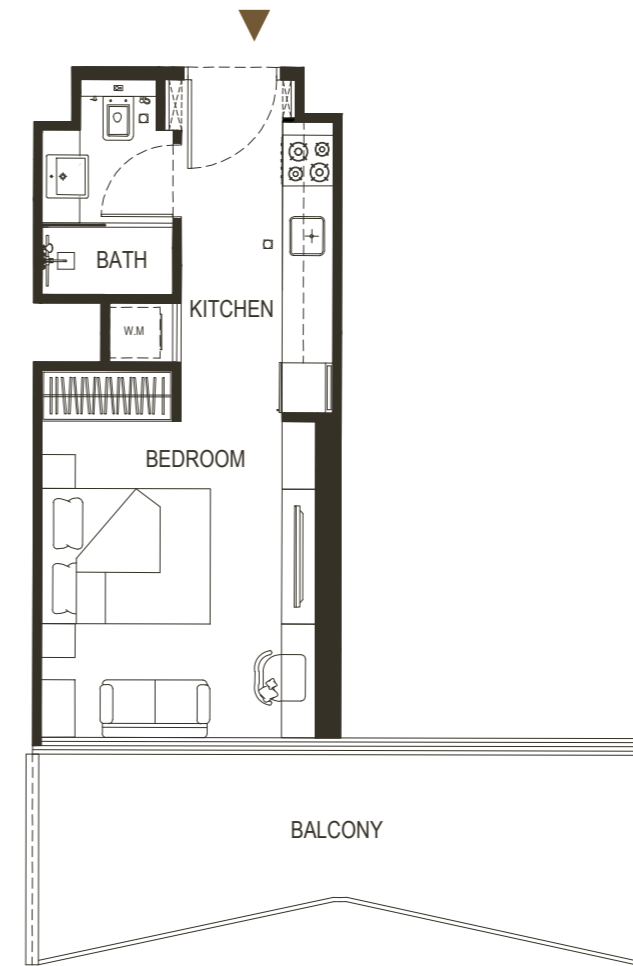
TYPE - 6



AREA	SQ.M	SQ.FT
SUITE AREA	30.21 m <sup>2</sup>	325.17 ft <sup>2</sup>
BALCONY AREA	19.01 m <sup>2</sup>	204.62 ft <sup>2</sup>
TOTAL UNIT AREA	49.22 m <sup>2</sup>	529.79 ft <sup>2</sup>

## FLAT DESIGN COMPONENTS

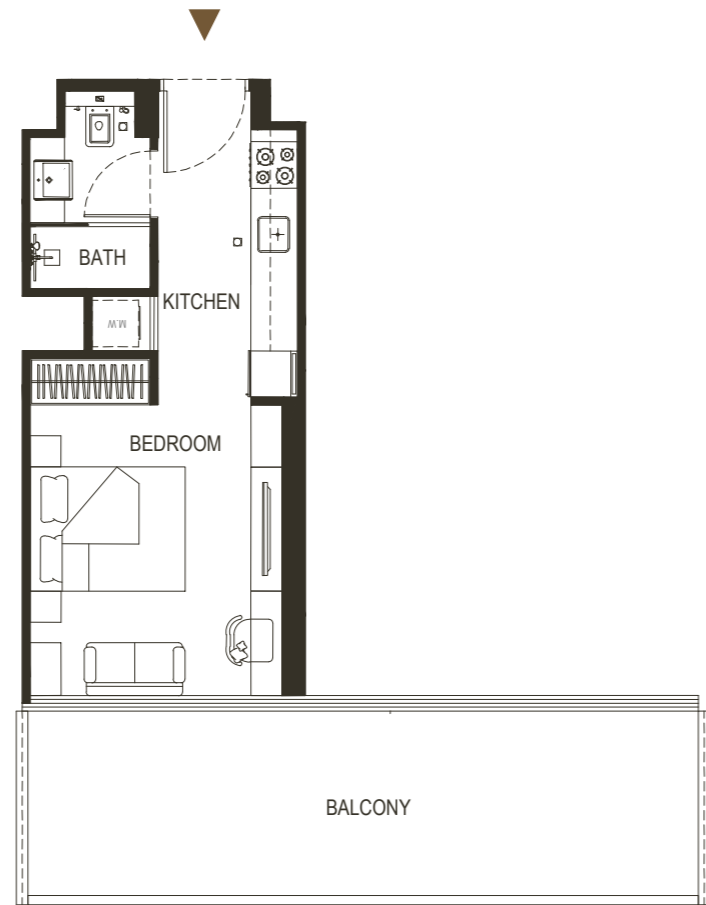
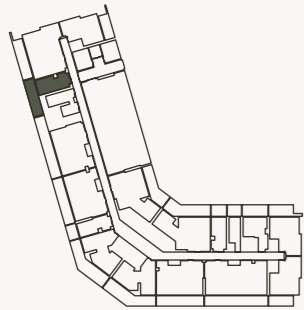
BATH	4 m <sup>2</sup>
STUDIO	13 m <sup>2</sup>
LAUNDRY	1 m <sup>2</sup>
KITCHEN	7 m <sup>2</sup>



6. Calculation of suite area is measured as the area bounded by the centre line of demising or partition walls separating one unit from another unit, the exterior face of all exterior walls, and the exterior face of the corridor wall enclosing the adjoining unit. 7. Calculation of balcony area is measured as the area bounded by the centre line of demising or partition walls separating one unit from another unit, the outmost face of the enclosing guard and the external face of the adjoining balcony. 8. The units are measured at typical floor in the building. Columns may vary in size depending on the floor level. 9. For each unit type, unit sizes and details might be different and your sales and purchase agreement will contain the actual size of each specific unit.

# STUDIO

TYPE - 7



AREA	SQ.M	SQ.FT
SUITE AREA	30.21 m <sup>2</sup>	325.17 ft <sup>2</sup>
BALCONY AREA	18.12 m <sup>2</sup>	195.04 ft <sup>2</sup>
TOTAL UNIT AREA	48.33 m <sup>2</sup>	520.21 ft <sup>2</sup>

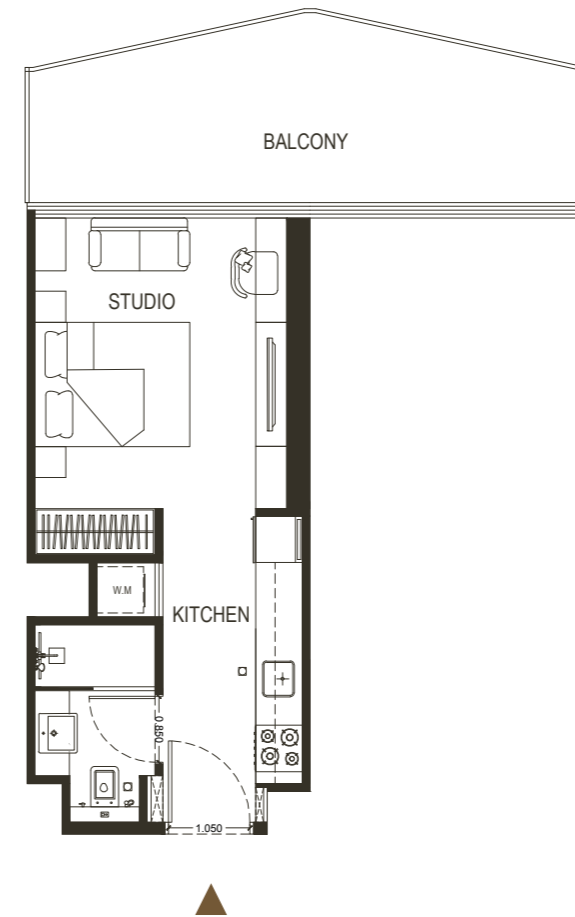
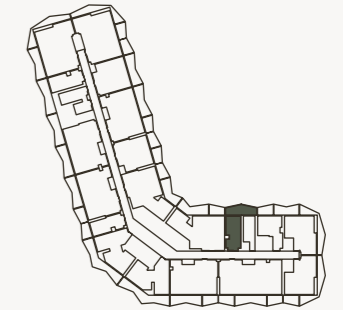
### FLAT DESIGN COMPONENTS

BATH	4 m <sup>2</sup>
STUDIO	13 m <sup>2</sup>
LAUNDRY	1 m <sup>2</sup>
KITCHEN	7 m <sup>2</sup>

Disclaimer: 1. All stated dimensions and services whether in relation to the building, common areas or individual units are subject to government and local authority approvals. Final dimensions and services will be stated in your sales and purchase agreement 2. All room dimensions are measured to structural elements and exclude wall finishes and construction tolerances. 3. All dimensions have been provided by our consultant architects. 4. All materials, dimensions and drawings are approximate. Information is subject to change without notice. 5. Actual suite area may vary from the stated area. Drawings are not to scale. The Developer reserves the right to make any revisions whatsoever including for aesthetic purposes.

# STUDIO

TYPE - 8



AREA	SQ.M	SQ.FT
SUITE AREA	28.92 m <sup>2</sup>	311.29 ft <sup>2</sup>
BALCONY AREA	8.02 m <sup>2</sup>	86.32 ft <sup>2</sup>
TOTAL UNIT AREA	36.94m <sup>2</sup>	397.61 ft <sup>2</sup>

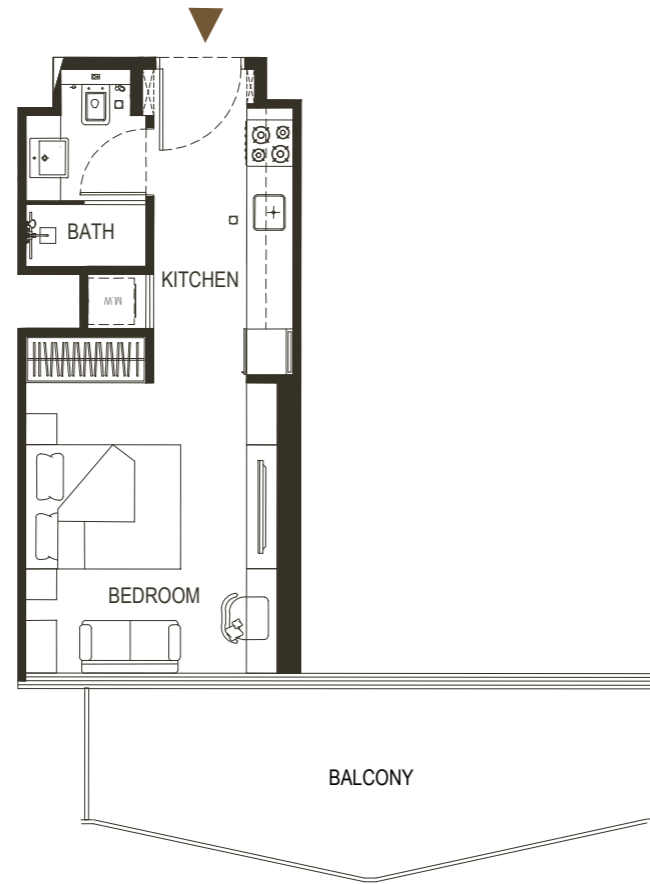
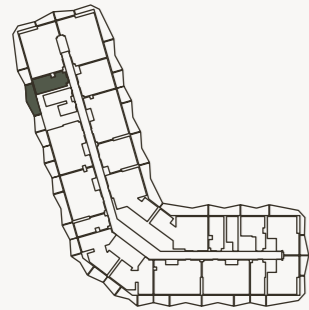
### FLAT DESIGN COMPONENTS

BATH	4 m <sup>2</sup>
STUDIO	13 m <sup>2</sup>
LAUNDRY	1 m <sup>2</sup>
KITCHEN	7 m <sup>2</sup>

6. Calculation of suite area is measured as the area bounded by the centre line of demising or partition walls separating one unit from another unit, the exterior face of all exterior walls, and the exterior face of the corridor wall enclosing the adjoining unit. 7. Calculation of balcony area is measured as the area bounded by the centre line of demising or partition walls separating one unit from another unit, the outmost face of the enclosing guard and the external face of the adjoining balcony. 8. The units are measured at typical floor in the building. Columns may vary in size depending on the floor level. 9. For each unit type, unit sizes and details might be different and your sales and purchase agreement will contain the actual size of each specific unit.

# STUDIO

TYPE - 9



AREA	SQ.M	SQ.FT
SUITE AREA	30.21 m <sup>2</sup>	325.17 ft <sup>2</sup>
BALCONY AREA	18.64 m <sup>2</sup>	200.63 ft <sup>2</sup>
TOTAL UNIT AREA	48.85 m <sup>2</sup>	525.81 ft <sup>2</sup>

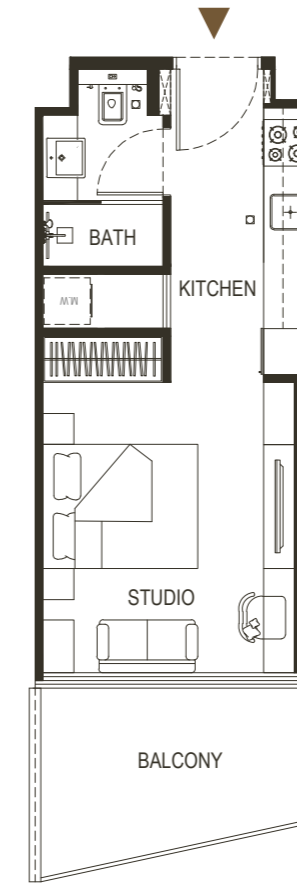
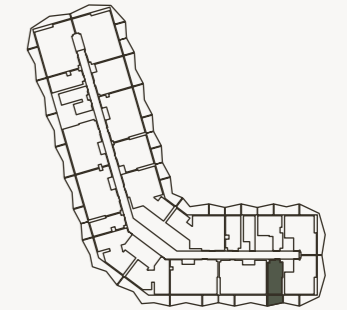
## FLAT DESIGN COMPONENTS

BATH	4 m <sup>2</sup>
STUDIO	13 m <sup>2</sup>
LAUNDRY	1 m <sup>2</sup>
KITCHEN	7 m <sup>2</sup>

Disclaimer: 1. All stated dimensions and services whether in relation to the building, common areas or individual units are subject to government and local authority approvals. Final dimensions and services will be stated in your sales and purchase agreement 2. All room dimensions are measured to structural elements and exclude wall finishes and construction tolerances. 3. All dimensions have been provided by our consultant architects. 4. All materials, dimensions and drawings are approximate. Information is subject to change without notice. 5. Actual suite area may vary from the stated area. Drawings are not to scale. The Developer reserves the right to make any revisions whatsoever including for aesthetic purposes.

# STUDIO

TYPE - 10



AREA	SQ.M	SQ.FT
SUITE AREA	28.82 m <sup>2</sup>	310.21 ft <sup>2</sup>
BALCONY AREA	7.93 m <sup>2</sup>	85.35 ft <sup>2</sup>
TOTAL UNIT AREA	36.75 m <sup>2</sup>	395.57 ft <sup>2</sup>

## FLAT DESIGN COMPONENTS

BATH	4 m <sup>2</sup>
STUDIO	13 m <sup>2</sup>
LAUNDRY	1 m <sup>2</sup>
KITCHEN	7 m <sup>2</sup>

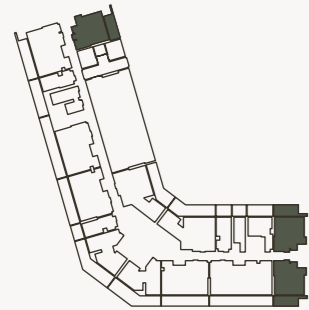
6. Calculation of suite area is measured as the area bounded by the centre line of demising or partition walls separating one unit from another unit, the exterior face of all exterior walls, and the exterior face of the corridor wall enclosing the adjoining unit. 7. Calculation of balcony area is measured as the area bounded by the centre line of demising or partition walls separating one unit from another unit, the outmost face of the enclosing guard and the external face of the adjoining balcony. 8. The units are measured at typical floor in the building. Columns may vary in size depending on the floor level. 9. For each unit type, unit sizes and details might be different and your sales and purchase agreement will contain the actual size of each specific unit.





# 1 BEDROOM

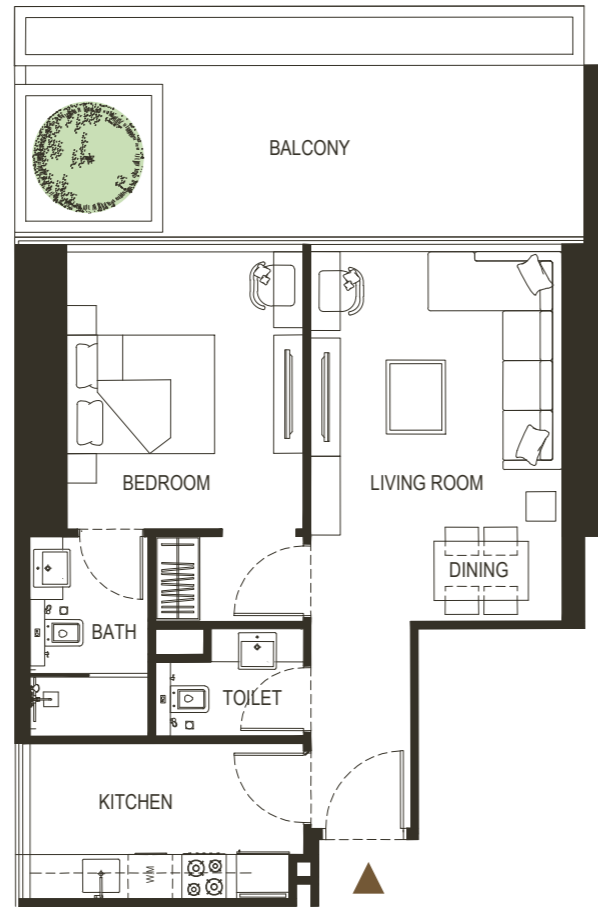
TYPE - 1



AREA	SQ.M	SQ.FT
SUITE AREA	56.86 m <sup>2</sup>	612.03 ft <sup>2</sup>
BALCONY AREA	21.30 m <sup>2</sup>	229.27 ft <sup>2</sup>
TOTAL UNIT AREA	78.16 m <sup>2</sup>	841.30 ft <sup>2</sup>

## FLAT DESIGN COMPONENTS

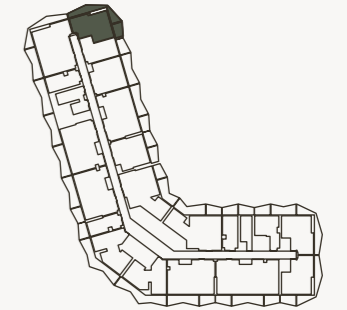
MASTER BATH	5 m <sup>2</sup>
MASTER BEDROOM	15 m <sup>2</sup>
LIVING	17 m <sup>2</sup>
KITCHEN & DINING	8 m <sup>2</sup>
W.C	3 m <sup>2</sup>
CORRIDOR	4 m <sup>2</sup>



Disclaimer: 1. All stated dimensions and services whether in relation to the building, common areas or individual units are subject to government and local authority approvals. Final dimensions and services will be stated in your sales and purchase agreement 2. All room dimensions are measured to structural elements and exclude wall finishes and construction tolerances. 3. All dimensions have been provided by our consultant architects. 4. All materials, dimensions and drawings are approximate. Information is subject to change without notice. 5. Actual suite area may vary from the stated area. Drawings are not to scale. The Developer reserves the right to make any revisions whatsoever including for aesthetic purposes.

# 1 BEDROOM

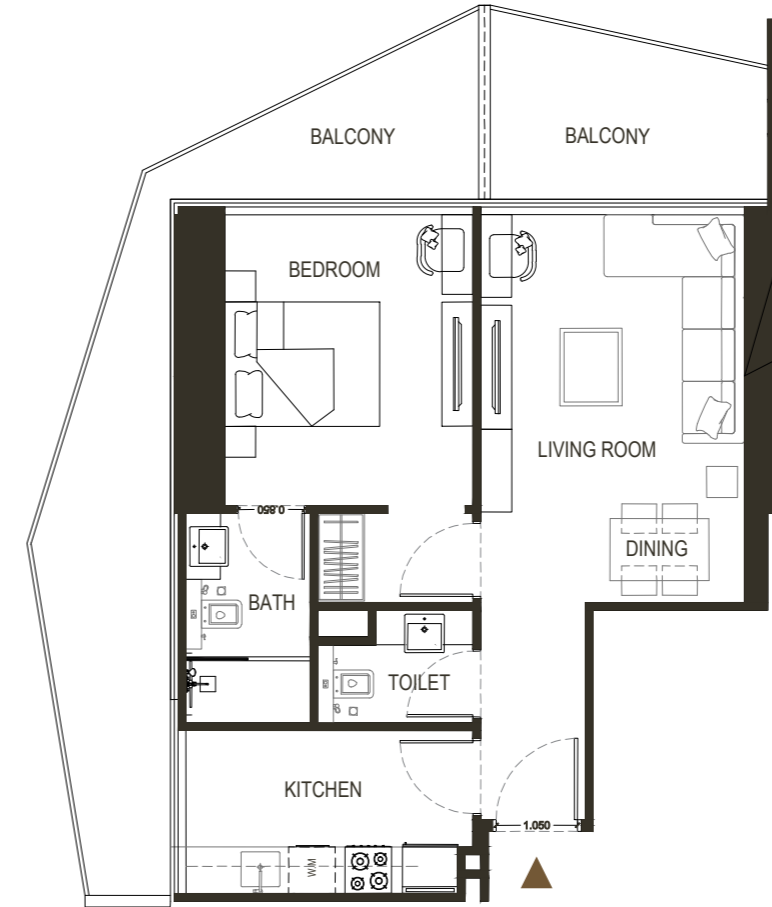
TYPE - 2



AREA	SQ.M	SQ.FT
SUITE AREA	54.43 m <sup>2</sup>	585.87 ft <sup>2</sup>
BALCONY AREA	27.65 m <sup>2</sup>	297.62 ft <sup>2</sup>
TOTAL UNIT AREA	82.08 m <sup>2</sup>	883.50 ft <sup>2</sup>

## FLAT DESIGN COMPONENTS

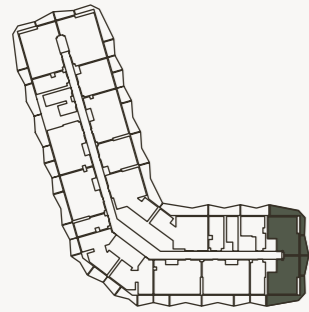
MASTER BATH	4 m <sup>2</sup>
MASTER BEDROOM	15 m <sup>2</sup>
LIVING	17 m <sup>2</sup>
KITCHEN & DINING	8 m <sup>2</sup>
W.C	3 m <sup>2</sup>
CORRIDOR	4 m <sup>2</sup>



6. Calculation of suite area is measured as the area bounded by the centre line of demising or partition walls separating one unit from another unit, the exterior face of all exterior walls, and the exterior face of the corridor wall enclosing the adjoining unit. 7. Calculation of balcony area is measured as the area bounded by the centre line of demising or partition walls separating one unit from another unit, the outmost face of the enclosing guard and the external face of the adjoining balcony. 8. The units are measured at typical floor in the building. Columns may vary in size depending on the floor level. 9. For each unit type, unit sizes and details might be different and your sales and purchase agreement will contain the actual size of each specific unit.

# 1 BEDROOM

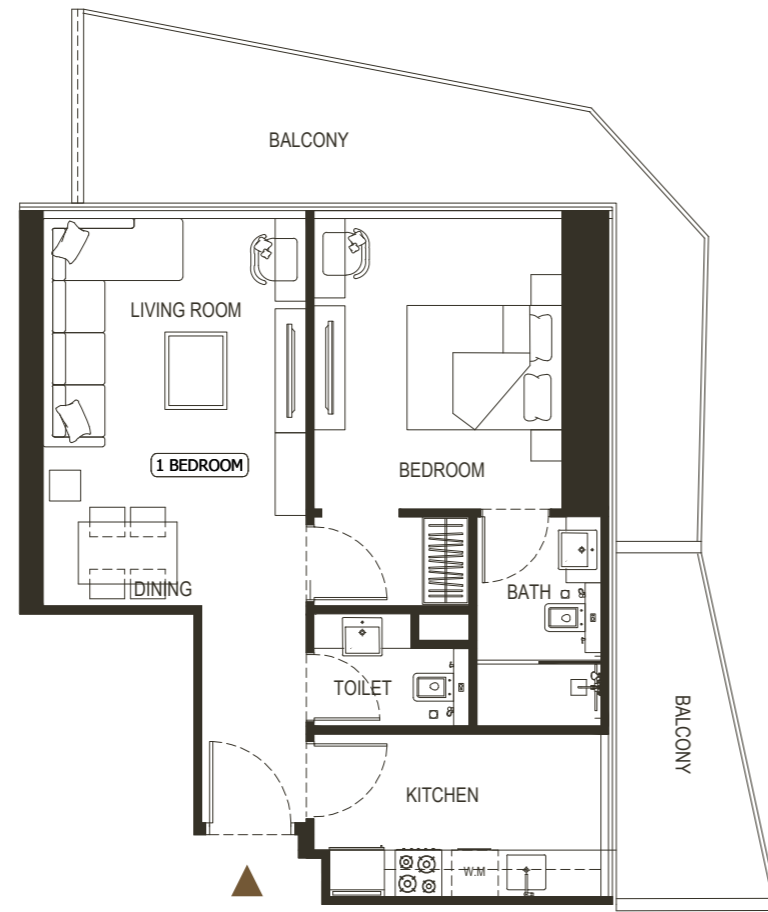
TYPE - 3



AREA	SQ.M	SQ.FT
SUITE AREA	56.87 m <sup>2</sup>	612.14 ft <sup>2</sup>
BALCONY AREA	28.85 m <sup>2</sup>	310.53 ft <sup>2</sup>
TOTAL UNIT AREA	85.72 m <sup>2</sup>	922.68 ft <sup>2</sup>

## FLAT DESIGN COMPONENTS

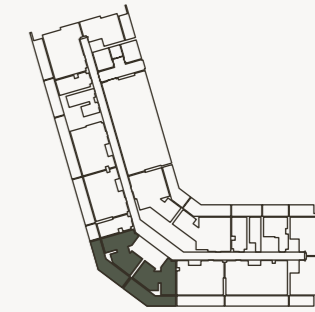
MASTER BATH	4 m <sup>2</sup>
MASTER BEDROOM	15 m <sup>2</sup>
LIVING	15 m <sup>2</sup>
KITCHEN & DINING	8 m <sup>2</sup>
W.C	3 m <sup>2</sup>
CORRIDOR	4 m <sup>2</sup>



Disclaimer: 1. All stated dimensions and services whether in relation to the building, common areas or individual units are subject to government and local authority approvals. Final dimensions and services will be stated in your sales and purchase agreement 2. All room dimensions are measured to structural elements and exclude wall finishes and construction tolerances. 3. All dimensions have been provided by our consultant architects. 4. All materials, dimensions and drawings are approximate. Information is subject to change without notice. 5. Actual suite area may vary from the stated area. Drawings are not to scale. The Developer reserves the right to make any revisions whatsoever including for aesthetic purposes.

# 1 BEDROOM

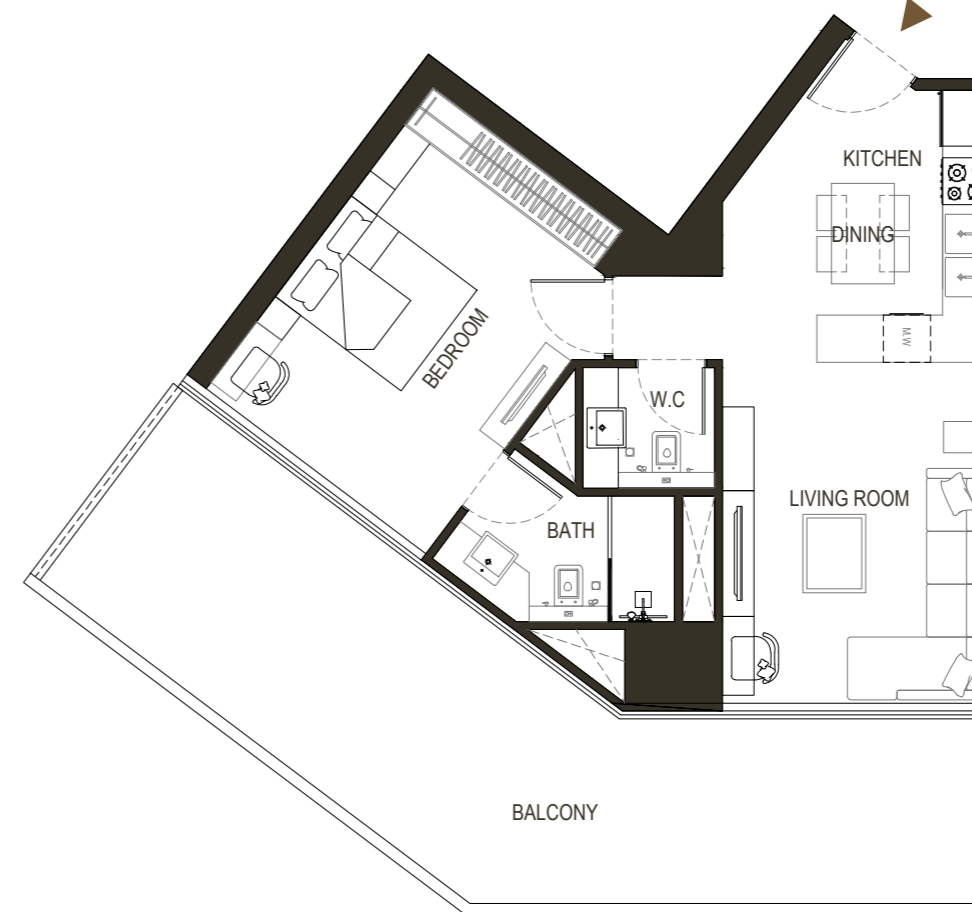
TYPE - 4



AREA	SQ.M	SQ.FT
SUITE AREA	61.22 m <sup>2</sup>	658.96 ft <sup>2</sup>
BALCONY AREA	36.70 m <sup>2</sup>	395.03 ft <sup>2</sup>
TOTAL UNIT AREA	97.92 m <sup>2</sup>	1054 ft <sup>2</sup>

## FLAT DESIGN COMPONENTS

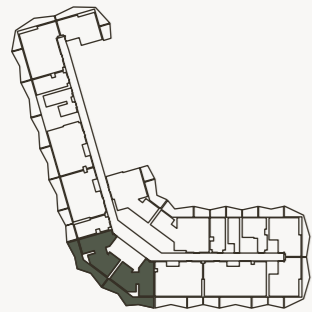
MASTER BATH	5 m <sup>2</sup>
MASTER BEDROOM	17 m <sup>2</sup>
LIVING	15 m <sup>2</sup>
KITCHEN & DINING	11 m <sup>2</sup>
W.C	3 m <sup>2</sup>
CORRIDOR	2 m <sup>2</sup>



6. Calculation of suite area is measured as the area bounded by the centre line of demising or partition walls separating one unit from another unit, the exterior face of all exterior walls, and the exterior face of the corridor wall enclosing the adjoining unit. 7. Calculation of balcony area is measured as the area bounded by the centre line of demising or partition walls separating one unit from another unit, the outmost face of the enclosing guard and the external face of the adjoining balcony. 8. The units are measured at typical floor in the building. Columns may vary in size depending on the floor level. 9. For each unit type, unit sizes and details might be different and your sales and purchase agreement will contain the actual size of each specific unit.

# 1 BEDROOM

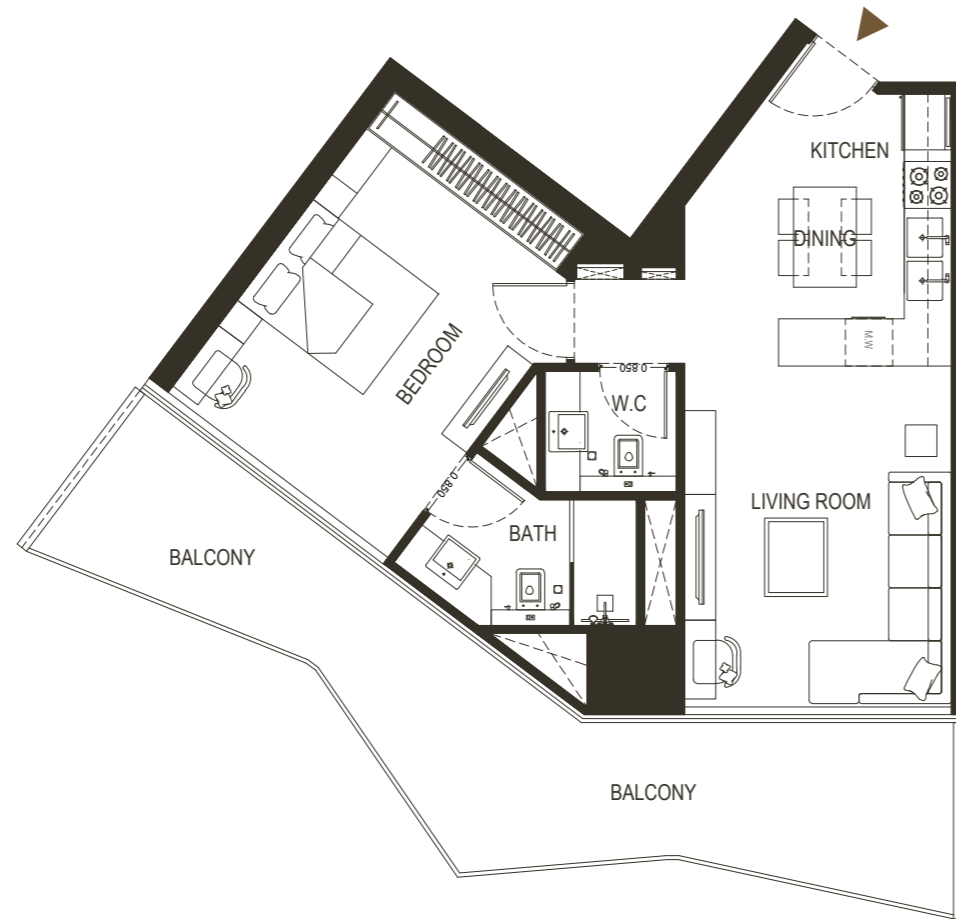
TYPE - 5



AREA	SQ.M	SQ.FT
SUITE AREA	61.22 m <sup>2</sup>	658.96 ft <sup>2</sup>
BALCONY AREA	25.95 m <sup>2</sup>	279.32 ft <sup>2</sup>
TOTAL UNIT AREA	87.17 m <sup>2</sup>	938.29 ft <sup>2</sup>

## FLAT DESIGN COMPONENTS

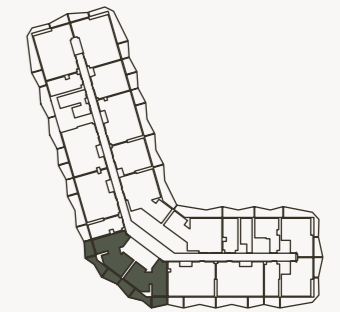
MASTER BATH	5 m <sup>2</sup>
MASTER BEDROOM	17 m <sup>2</sup>
LIVING	15 m <sup>2</sup>
KITCHEN & DINING	11 m <sup>2</sup>
W.C	3 m <sup>2</sup>
CORRIDOR	2 m <sup>2</sup>



Disclaimer: 1. All stated dimensions and services whether in relation to the building, common areas or individual units are subject to government and local authority approvals. Final dimensions and services will be stated in your sales and purchase agreement 2. All room dimensions are measured to structural elements and exclude wall finishes and construction tolerances. 3. All dimensions have been provided by our consultant architects. 4. All materials, dimensions and drawings are approximate. Information is subject to change without notice. 5. Actual suite area may vary from the stated area. Drawings are not to scale. The Developer reserves the right to make any revisions whatsoever including for aesthetic purposes.

# 1 BEDROOM

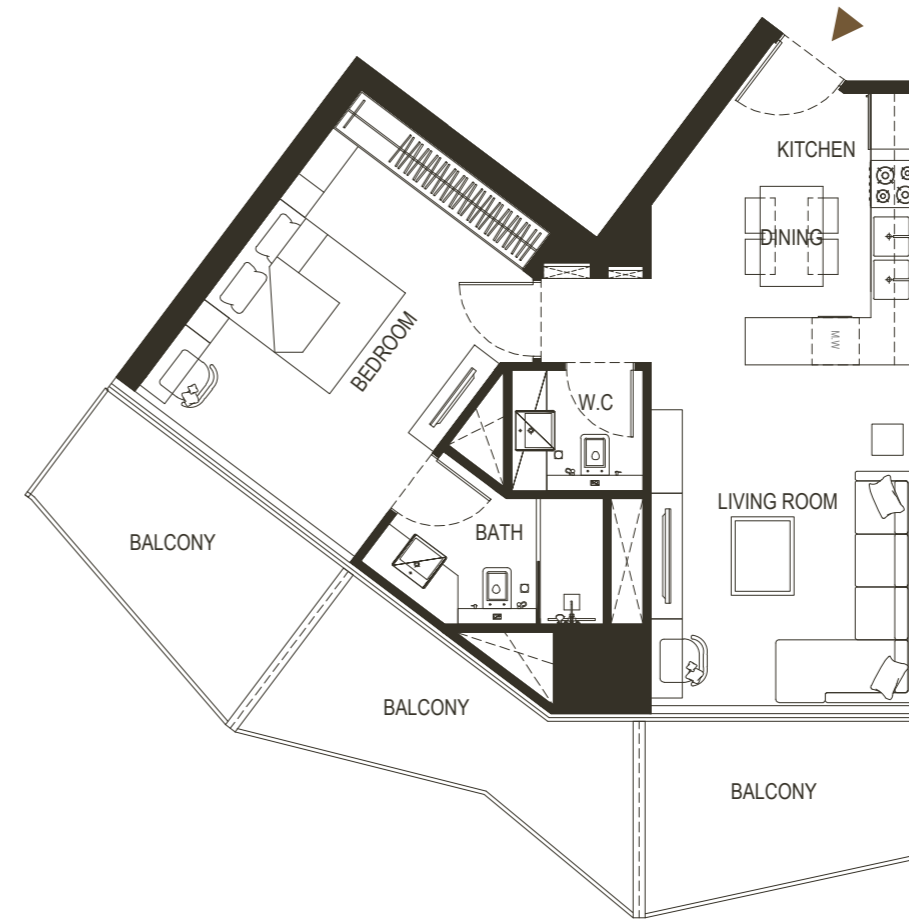
TYPE - 6



AREA	SQ.M	SQ.FT
SUITE AREA	61.18 m <sup>2</sup>	658.53 ft <sup>2</sup>
BALCONY AREA	25.46 m <sup>2</sup>	274.04 ft <sup>2</sup>
TOTAL UNIT AREA	86.64 m <sup>2</sup>	932.58 ft <sup>2</sup>

## FLAT DESIGN COMPONENTS

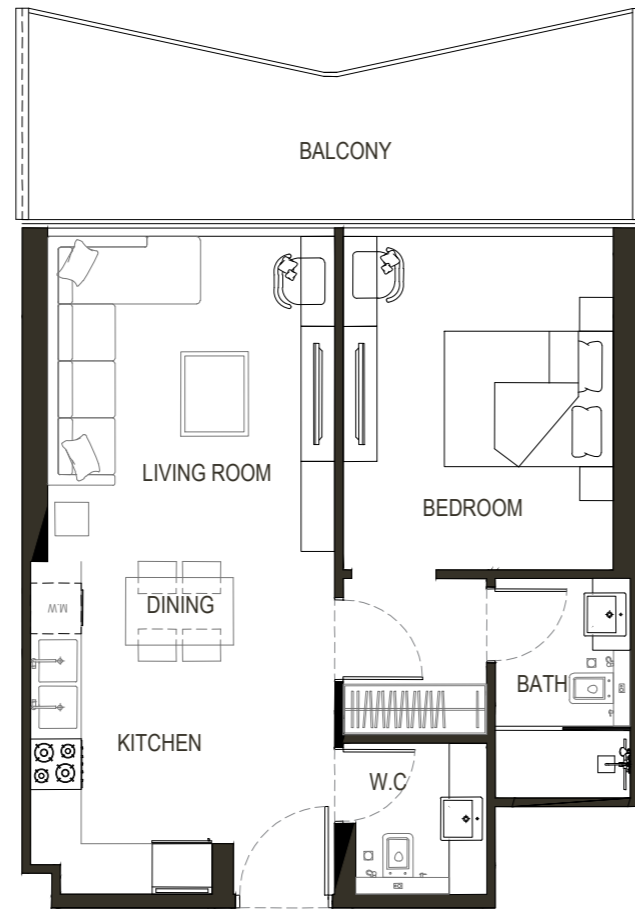
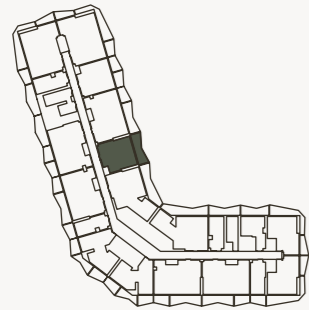
MASTER BATH	5 m <sup>2</sup>
MASTER BEDROOM	17 m <sup>2</sup>
LIVING	15 m <sup>2</sup>
KITCHEN & DINING	11 m <sup>2</sup>
W.C	3 m <sup>2</sup>
CORRIDOR	2 m <sup>2</sup>



6. Calculation of suite area is measured as the area bounded by the centre line of demising or partition walls separating one unit from another unit, the exterior face of all exterior walls, and the exterior face of the corridor wall enclosing the adjoining unit. 7. Calculation of balcony area is measured as the area bounded by the centre line of demising or partition walls separating one unit from another unit, the outmost face of the enclosing guard and the external face of the adjoining balcony. 8. The units are measured at typical floor in the building. Columns may vary in size depending on the floor level. 9. For each unit type, unit sizes and details might be different and your sales and purchase agreement will contain the actual size of each specific unit.

# 1 BEDROOM

TYPE - 7



AREA	SQ.M	SQ.FT
SUITE AREA	56.33 m <sup>2</sup>	606.33 ft <sup>2</sup>
BALCONY AREA	15.67 m <sup>2</sup>	168.67 ft <sup>2</sup>
TOTAL UNIT AREA	72 m <sup>2</sup>	775 ft <sup>2</sup>

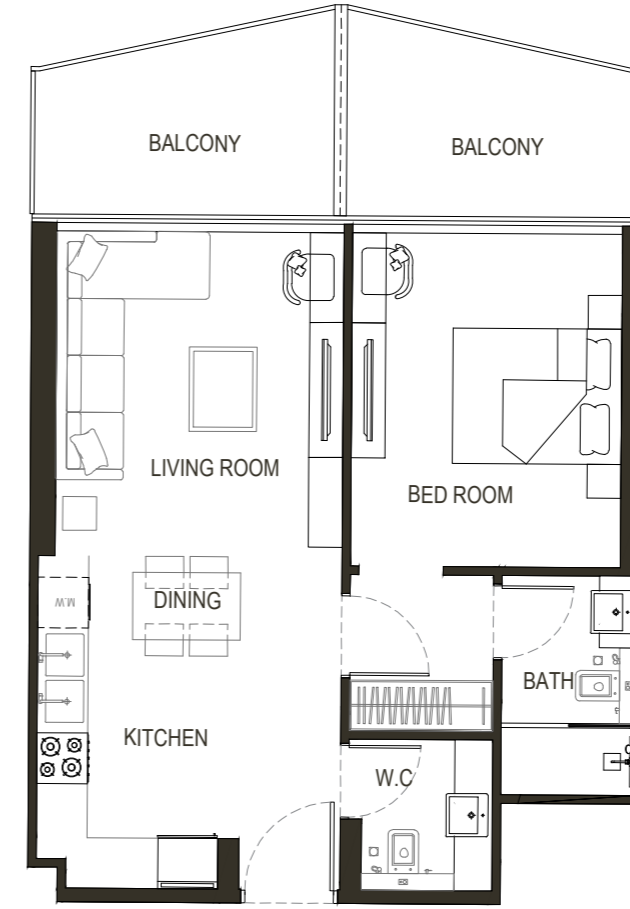
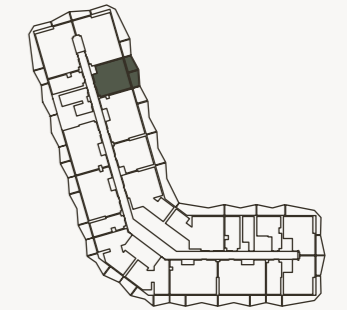
## FLAT DESIGN COMPONENTS

MASTER BATH	4 m <sup>2</sup>
MASTER BEDROOM	16 m <sup>2</sup>
LIVING	13 m <sup>2</sup>
KITCHEN & DINING	9 m <sup>2</sup>
W.C	3 m <sup>2</sup>
CORRIDOR	5 m <sup>2</sup>

Disclaimer: 1. All stated dimensions and services whether in relation to the building, common areas or individual units are subject to government and local authority approvals. Final dimensions and services will be stated in your sales and purchase agreement 2. All room dimensions are measured to structural elements and exclude wall finishes and construction tolerances. 3. All dimensions have been provided by our consultant architects. 4. All materials, dimensions and drawings are approximate. Information is subject to change without notice. 5. Actual suite area may vary from the stated area. Drawings are not to scale. The Developer reserves the right to make any revisions whatsoever including for aesthetic purposes.

# 1 BEDROOM

TYPE - 8



AREA	SQ.M	SQ.FT
SUITE AREA	56.33 m <sup>2</sup>	606.33 ft <sup>2</sup>
BALCONY AREA	15.67 m <sup>2</sup>	168.67 ft <sup>2</sup>
TOTAL UNIT AREA	72 m <sup>2</sup>	775 ft <sup>2</sup>

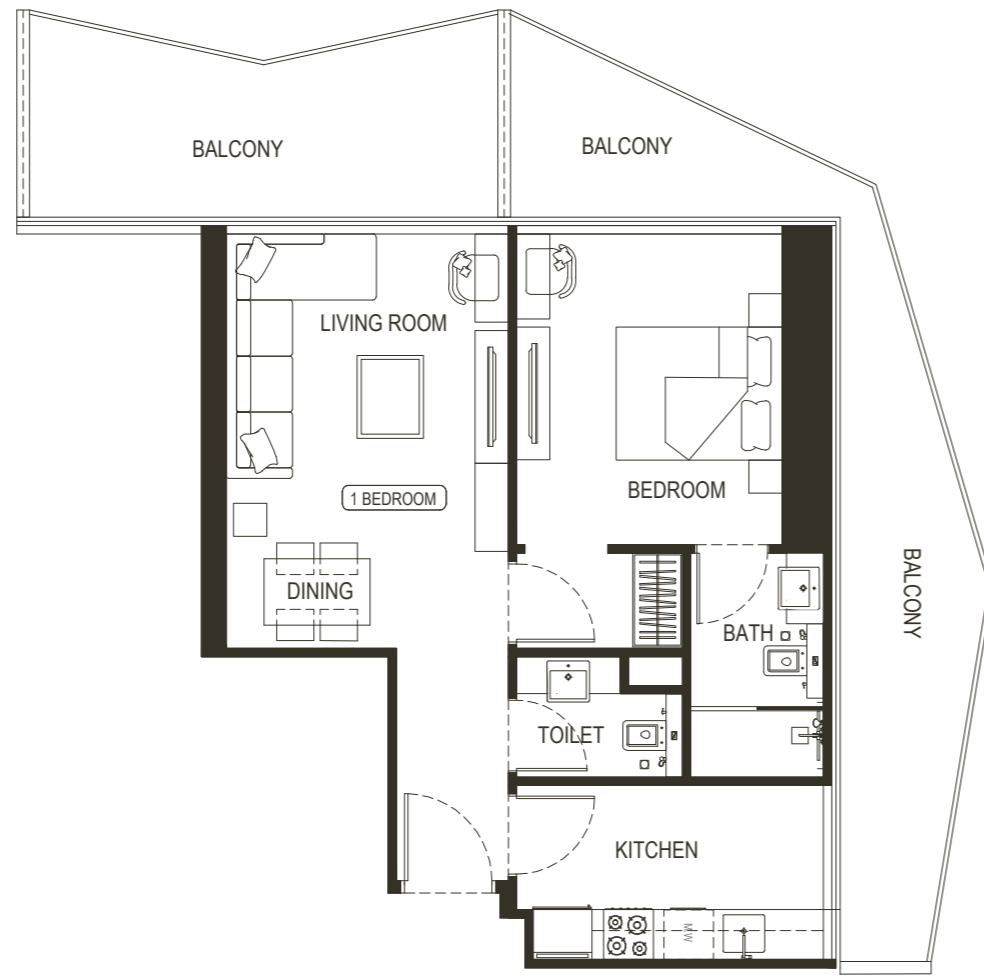
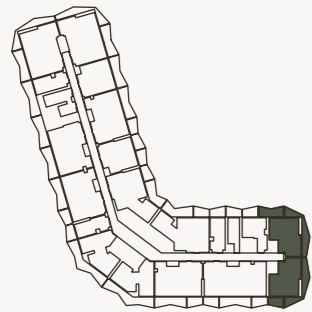
## FLAT DESIGN COMPONENTS

MASTER BATH	4 m <sup>2</sup>
MASTER BEDROOM	16 m <sup>2</sup>
LIVING	13 m <sup>2</sup>
KITCHEN & DINING	9 m <sup>2</sup>
W.C	3 m <sup>2</sup>
CORRIDOR	5 m <sup>2</sup>

6. Calculation of suite area is measured as the area bounded by the centre line of demising or partition walls separating one unit from another unit, the exterior face of all exterior walls, and the exterior face of the corridor wall enclosing the adjoining unit. 7. Calculation of balcony area is measured as the area bounded by the centre line of demising or partition walls separating one unit from another unit, the outmost face of the enclosing guard and the external face of the adjoining balcony. 8. The units are measured at typical floor in the building. Columns may vary in size depending on the floor level. 9. For each unit type, unit sizes and details might be different and your sales and purchase agreement will contain the actual size of each specific unit.

# 1 BEDROOM

TYPE - 9



AREA	SQ.M	SQ.FT
SUITE AREA	56.87 m <sup>2</sup>	612.14 ft <sup>2</sup>
BALCONY AREA	28.12 m <sup>2</sup>	302.68 ft <sup>2</sup>
TOTAL UNIT AREA	84.99 m <sup>2</sup>	914.82 ft <sup>2</sup>

## FLAT DESIGN COMPONENTS

MASTER BATH	5 m <sup>2</sup>
MASTER BEDROOM	15 m <sup>2</sup>
LIVING	17 m <sup>2</sup>
KITCHEN & DINING	8 m <sup>2</sup>
W.C	3 m <sup>2</sup>
CORRIDOR	4 m <sup>2</sup>

Disclaimer: 1. All stated dimensions and services whether in relation to the building, common areas or individual units are subject to government and local authority approvals. Final dimensions and services will be stated in your sales and purchase agreement 2. All room dimensions are measured to structural elements and exclude wall finishes and construction tolerances. 3. All dimensions have been provided by our consultant architects. 4. All materials, dimensions and drawings are approximate. Information is subject to change without notice. 5. Actual suite area may vary from the stated area. Drawings are not to scale. The Developer reserves the right to make any revisions whatsoever including for aesthetic purposes.

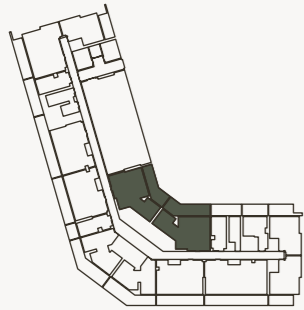






# 2 BEDROOM

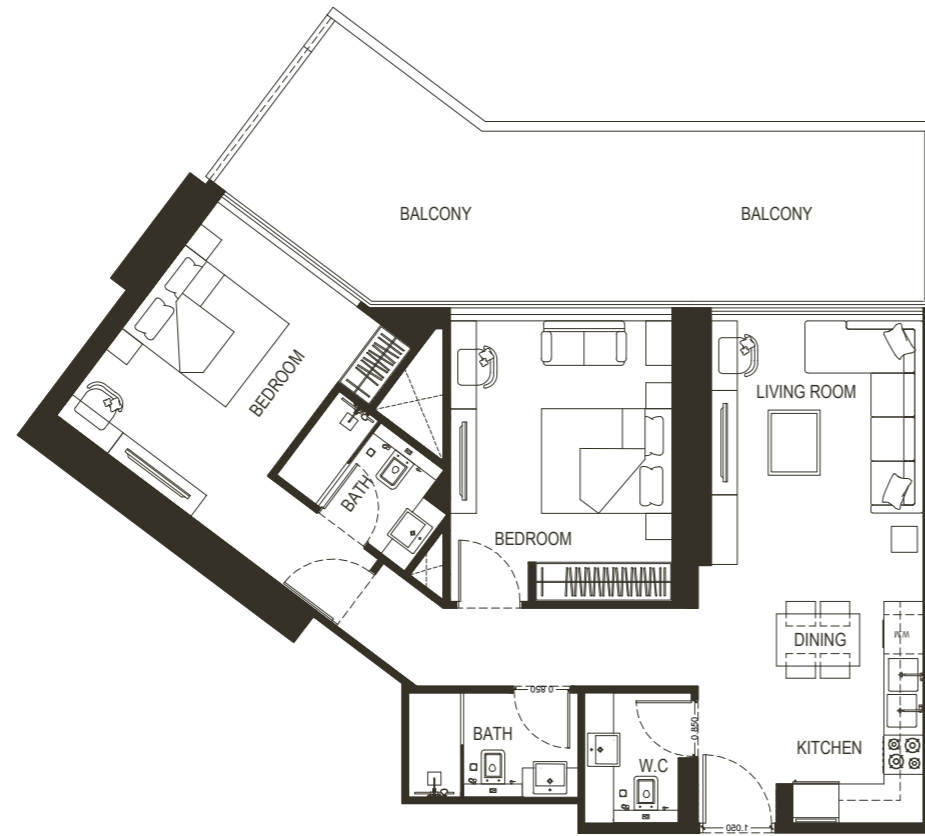
TYPE - 1



AREA	SQ.M	SQ.FT
SUITE AREA	85.76 m <sup>2</sup>	923.11 ft <sup>2</sup>
BALCONY AREA	31.23 m <sup>2</sup>	336.16 ft <sup>2</sup>
TOTAL UNIT AREA	116.99 m <sup>2</sup>	1259.27 ft <sup>2</sup>

### FLAT DESIGN COMPONENTS

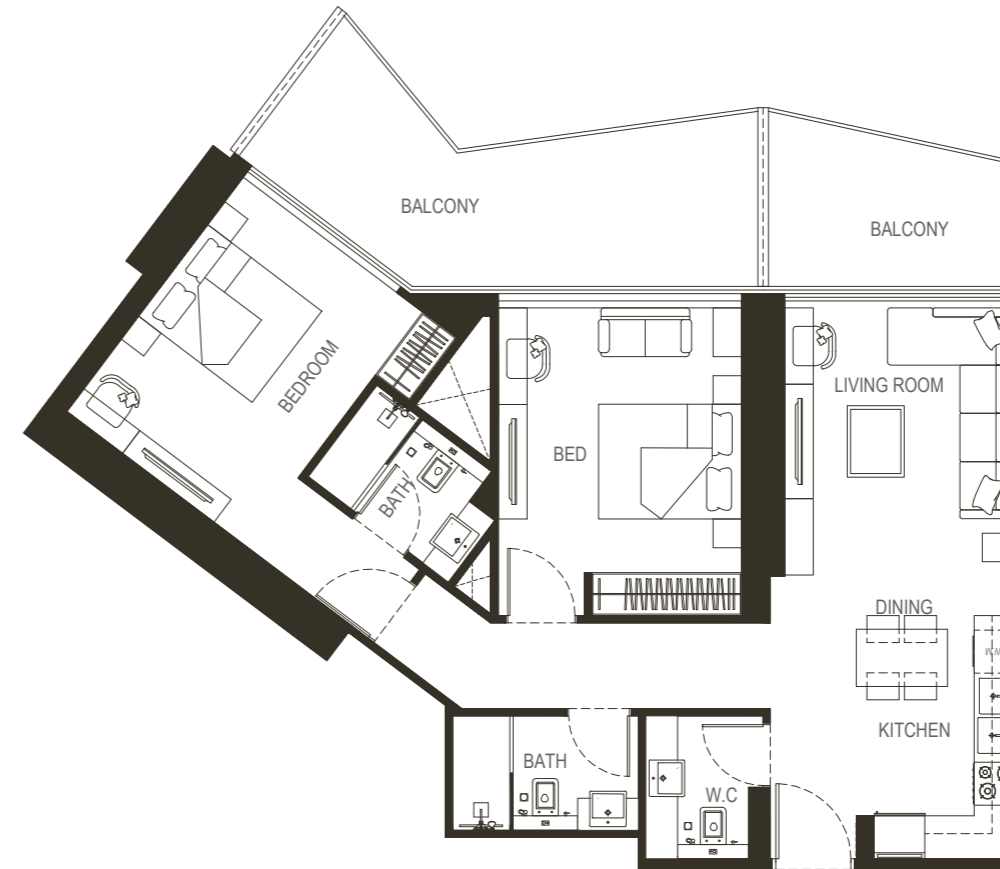
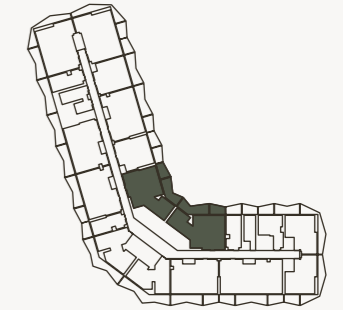
MASTER BATH	4 m <sup>2</sup>
MASTER BEDROOM	16 m <sup>2</sup>
LIVING	14 m <sup>2</sup>
KITCHEN & DINING	12 m <sup>2</sup>
BATH	4 m <sup>2</sup>
BEDROOM	15 m <sup>2</sup>
CORRIDOR	7 m <sup>2</sup>
W.C	7 m <sup>2</sup>



Disclaimer: 1. All stated dimensions and services whether in relation to the building, common areas or individual units are subject to government and local authority approvals. Final dimensions and services will be stated in your sales and purchase agreement 2. All room dimensions are measured to structural elements and exclude wall finishes and construction tolerances. 3. All dimensions have been provided by our consultant architects. 4. All materials, dimensions and drawings are approximate. Information is subject to change without notice. 5. Actual suite area may vary from the stated area. Drawings are not to scale. The Developer reserves the right to make any revisions whatsoever including for aesthetic purposes.

# 2 BEDROOM

TYPE - 2



6. Calculation of suite area is measured as the area bounded by the centre line of demising or partition walls separating one unit from another unit, the exterior face of all exterior walls, and the exterior face of the corridor wall enclosing the adjoining unit. 7. Calculation of balcony area is measured as the area bounded by the centre line of demising or partition walls separating one unit from another unit, the outmost face of the enclosing guard and the external face of the adjoining balcony. 8. The units are measured at typical floor in the building. Columns may vary in size depending on the floor level. 9. For each unit type, unit sizes and details might be different and your sales and purchase agreement will contain the actual size of each specific unit.

AREA	SQ.M	SQ.FT
SUITE AREA	85.57 m <sup>2</sup>	921.07 ft <sup>2</sup>
BALCONY AREA	24.91 m <sup>2</sup>	268.13 ft <sup>2</sup>
TOTAL UNIT AREA	110.48 m <sup>2</sup>	1189.20 ft <sup>2</sup>

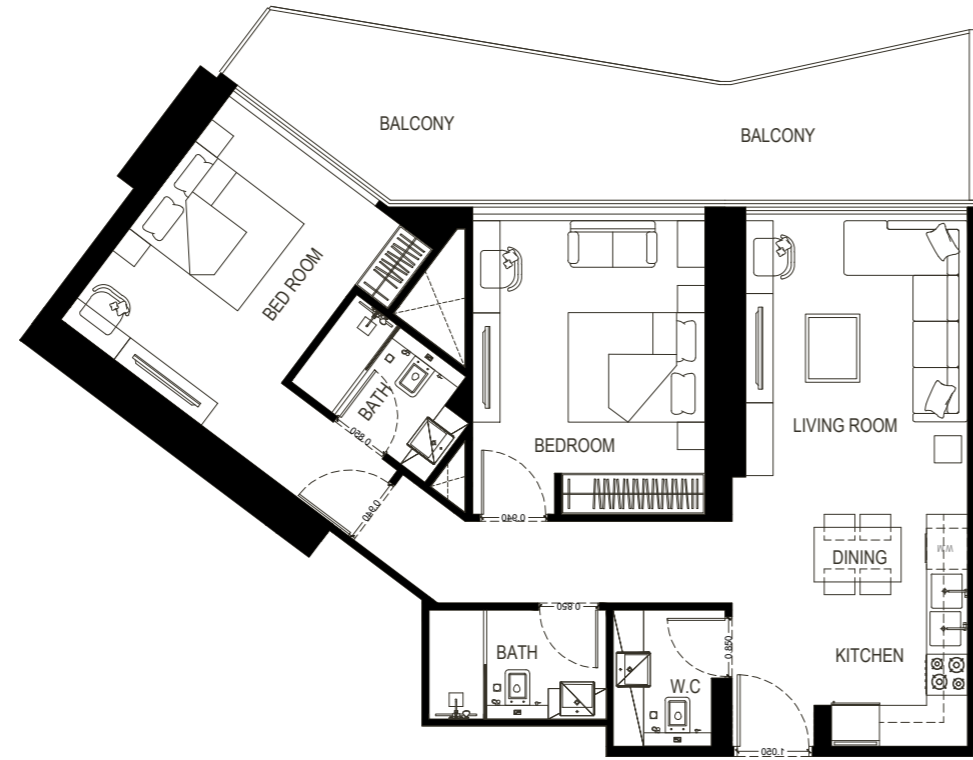
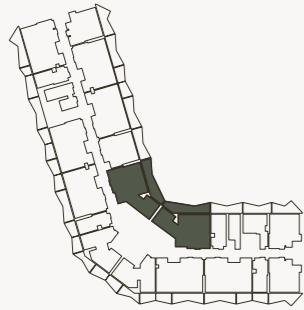
### FLAT DESIGN COMPONENTS

MASTER BATH	4 m <sup>2</sup>
MASTER BEDROOM	16 m <sup>2</sup>
LIVING	14 m <sup>2</sup>
KITCHEN & DINING	12 m <sup>2</sup>
BATH	4 m <sup>2</sup>
BEDROOM	15 m <sup>2</sup>
CORRIDOR	7 m <sup>2</sup>
W.C	7 m <sup>2</sup>



## 2 BEDROOM

TYPE - 3



AREA	SQ.M	SQ.FT
SUITE AREA	85.57 m <sup>2</sup>	921.07 ft <sup>2</sup>
BALCONY AREA	23.39 m <sup>2</sup>	251.77 ft <sup>2</sup>
TOTAL UNIT AREA	108.96 m <sup>2</sup>	1172.84 ft <sup>2</sup>

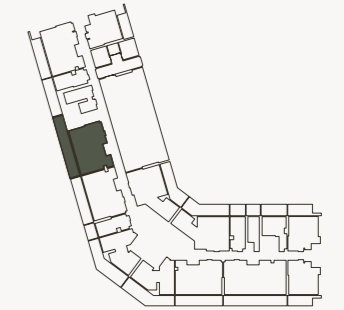
### FLAT DESIGN COMPONENTS

MASTER BATH	4 m <sup>2</sup>
MASTER BEDROOM	16 m <sup>2</sup>
LIVING	14 m <sup>2</sup>
KITCHEN & DINING	12 m <sup>2</sup>
BATH	4 m <sup>2</sup>
BEDROOM	15 m <sup>2</sup>
CORRIDOR	7 m <sup>2</sup>
W.C	7 m <sup>2</sup>

Disclaimer: 1. All stated dimensions and services whether in relation to the building, common areas or individual units are subject to government and local authority approvals. Final dimensions and services will be stated in your sales and purchase agreement 2. All room dimensions are measured to structural elements and exclude wall finishes and construction tolerances. 3. All dimensions have been provided by our consultant architects. 4. All materials, dimensions and drawings are approximate. Information is subject to change without notice. 5. Actual suite area may vary from the stated area. Drawings are not to scale. The Developer reserves the right to make any revisions whatsoever including for aesthetic purposes.

## 2 BEDROOM

TYPE - 4



AREA	SQ.M	SQ.FT
SUITE AREA	84.31 m <sup>2</sup>	907.50 ft <sup>2</sup>
BALCONY AREA	41.68 m <sup>2</sup>	448.63 ft <sup>2</sup>
TOTAL UNIT AREA	111.82 m <sup>2</sup>	1203.62 ft <sup>2</sup>

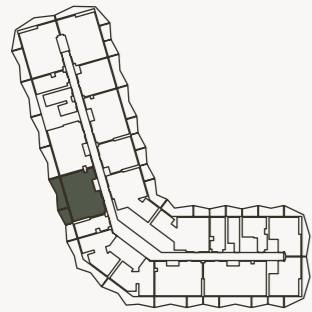
### FLAT DESIGN COMPONENTS

MASTER BATH	5 m <sup>2</sup>
MASTER BEDROOM	19 m <sup>2</sup>
LIVING	13 m <sup>2</sup>
KITCHEN & DINING	9 m <sup>2</sup>
BATH	4 m <sup>2</sup>
BEDROOM	12 m <sup>2</sup>
CORRIDOR	9 m <sup>2</sup>
LAUNDRY	1 m <sup>2</sup>
W.C	3 m <sup>2</sup>

6. Calculation of suite area is measured as the area bounded by the centre line of demising or partition walls separating one unit from another unit, the exterior face of all exterior walls, and the exterior face of the corridor wall enclosing the adjoining unit. 7. Calculation of balcony area is measured as the area bounded by the centre line of demising or partition walls separating one unit from another unit, the outmost face of the enclosing guard and the external face of the adjoining balcony. 8. The units are measured at typical floor in the building. Columns may vary in size depending on the floor level. 9. For each unit type, unit sizes and details might be different and your sales and purchase agreement will contain the actual size of each specific unit.

## 2 BEDROOM

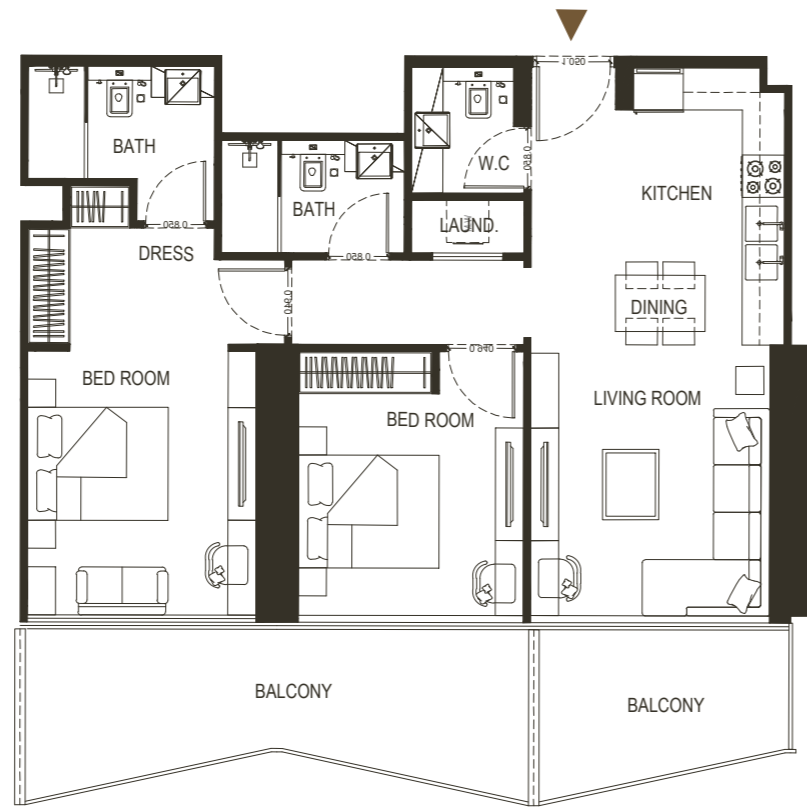
TYPE - 5



AREA	SQ.M	SQ.FT
SUITE AREA	84.30 m <sup>2</sup>	907.39 ft <sup>2</sup>
BALCONY AREA	23.59 m <sup>2</sup>	253.92 ft <sup>2</sup>
TOTAL UNIT AREA	107.89 m <sup>2</sup>	1161.31 ft <sup>2</sup>

### FLAT DESIGN COMPONENTS

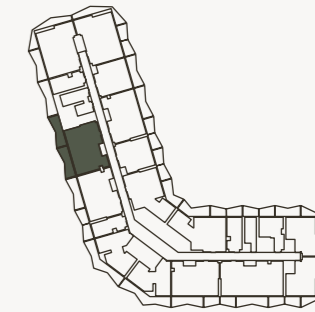
MASTER BATH	5 m <sup>2</sup>
MASTER BEDROOM	19 m <sup>2</sup>
LIVING	13 m <sup>2</sup>
KITCHEN & DINING	9 m <sup>2</sup>
BATH	4 m <sup>2</sup>
BEDROOM	12 m <sup>2</sup>
CORRIDOR	9 m <sup>2</sup>
LAUNDRY	1 m <sup>2</sup>
W.C	3 m <sup>2</sup>



Disclaimer: 1. All stated dimensions and services whether in relation to the building, common areas or individual units are subject to government and local authority approvals. Final dimensions and services will be stated in your sales and purchase agreement 2. All room dimensions are measured to structural elements and exclude wall finishes and construction tolerances. 3. All dimensions have been provided by our consultant architects. 4. All materials, dimensions and drawings are approximate. Information is subject to change without notice. 5. Actual suite area may vary from the stated area. Drawings are not to scale. The Developer reserves the right to make any revisions whatsoever including for aesthetic purposes.

## 2 BEDROOM

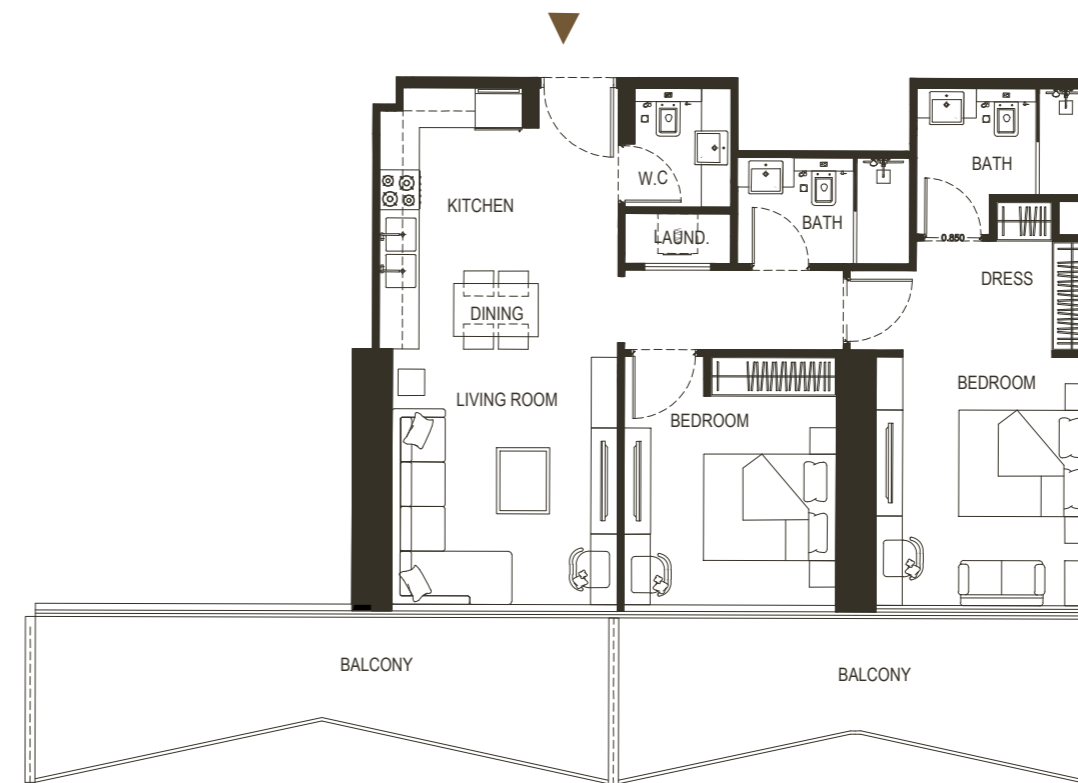
TYPE - 6



AREA	SQ.M	SQ.FT
SUITE AREA	84.31 m <sup>2</sup>	907.50 ft <sup>2</sup>
BALCONY AREA	32.66 m <sup>2</sup>	351.54 ft <sup>2</sup>
TOTAL UNIT AREA	116.97 m <sup>2</sup>	1259.05 ft <sup>2</sup>

### FLAT DESIGN COMPONENTS

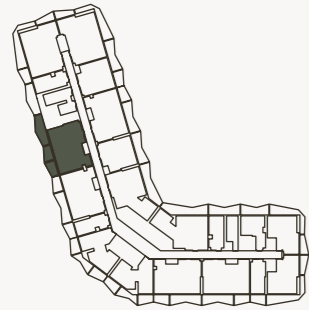
MASTER BATH	5 m <sup>2</sup>
MASTER BEDROOM	19 m <sup>2</sup>
LIVING	13 m <sup>2</sup>
KITCHEN & DINING	9 m <sup>2</sup>
BATH	4 m <sup>2</sup>
BEDROOM	12 m <sup>2</sup>
CORRIDOR	9 m <sup>2</sup>
LAUNDRY	1 m <sup>2</sup>
W.C	3 m <sup>2</sup>



6. Calculation of suite area is measured as the area bounded by the centre line of demising or partition walls separating one unit from another unit, the exterior face of all exterior walls, and the exterior face of the corridor wall enclosing the adjoining unit. 7. Calculation of balcony area is measured as the area bounded by the centre line of demising or partition walls separating one unit from another unit, the outmost face of the enclosing guard and the external face of the adjoining balcony. 8. The units are measured at typical floor in the building. Columns may vary in size depending on the floor level. 9. For each unit type, unit sizes and details might be different and your sales and purchase agreement will contain the actual size of each specific unit.

# 2 BEDROOM

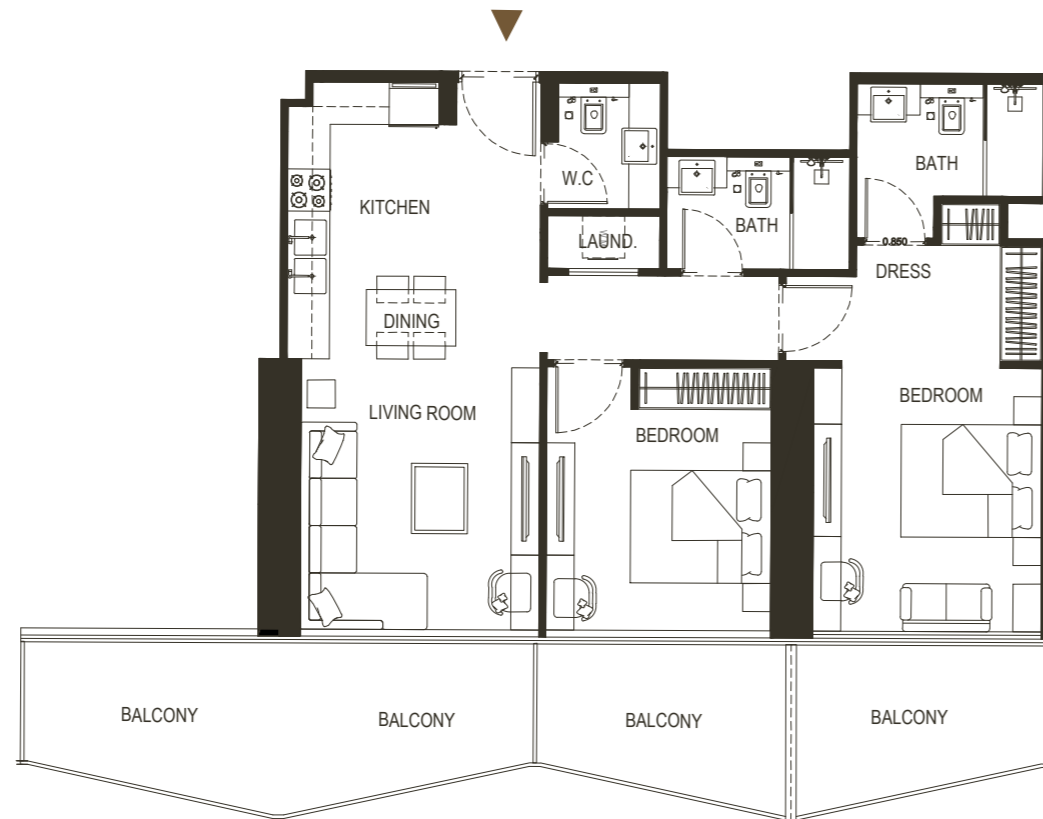
TYPE - 7



AREA	SQ.M	SQ.FT
SUITE AREA	84.31 m <sup>2</sup>	907.50 ft <sup>2</sup>
BALCONY AREA	32.54 m <sup>2</sup>	350.25 ft <sup>2</sup>
TOTAL UNIT AREA	116.85 m <sup>2</sup>	1257.76 ft <sup>2</sup>

### FLAT DESIGN COMPONENTS

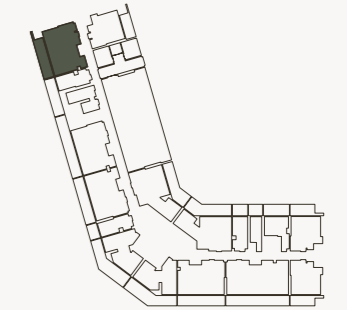
MASTER BATH	5 m <sup>2</sup>
MASTER BEDROOM	19 m <sup>2</sup>
LIVING	13 m <sup>2</sup>
KITCHEN & DINING	9 m <sup>2</sup>
BATH	4 m <sup>2</sup>
BEDROOM	12 m <sup>2</sup>
CORRIDOR	9 m <sup>2</sup>
LAUNDRY	1 m <sup>2</sup>
W.C	3 m <sup>2</sup>



Disclaimer: 1. All stated dimensions and services whether in relation to the building, common areas or individual units are subject to government and local authority approvals. Final dimensions and services will be stated in your sales and purchase agreement 2. All room dimensions are measured to structural elements and exclude wall finishes and construction tolerances. 3. All dimensions have been provided by our consultant architects. 4. All materials, dimensions and drawings are approximate. Information is subject to change without notice. 5. Actual suite area may vary from the stated area. Drawings are not to scale. The Developer reserves the right to make any revisions whatsoever including for aesthetic purposes.

# 2 BEDROOM

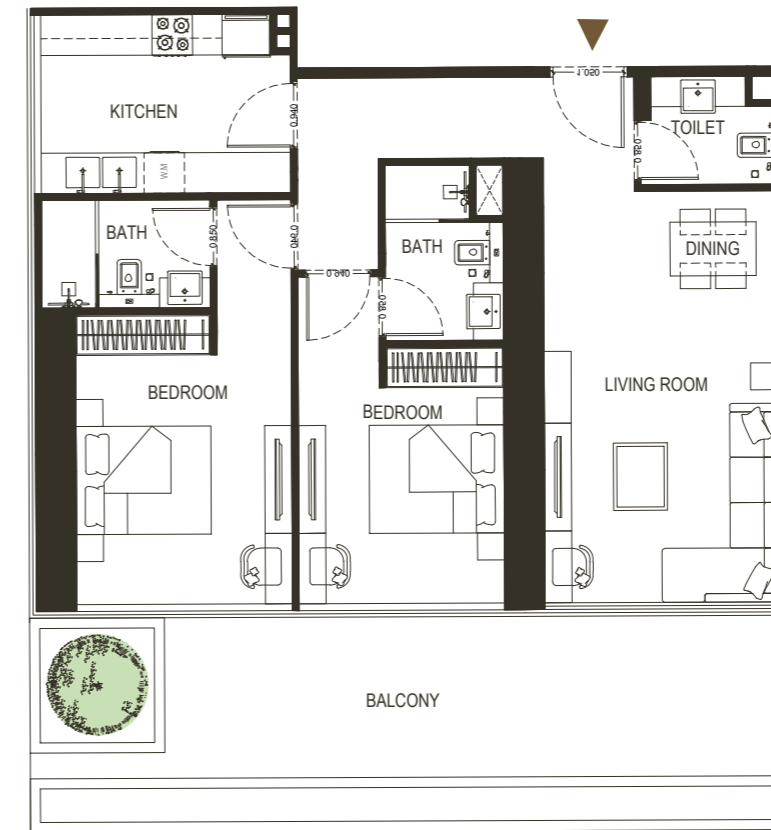
TYPE - 8



AREA	SQ.M	SQ.FT
SUITE AREA	85.15 m <sup>2</sup>	916 ft <sup>2</sup>
BALCONY AREA	28.34 m <sup>2</sup>	305.05 ft <sup>2</sup>
TOTAL UNIT AREA	113.49 m <sup>2</sup>	1221.60 ft <sup>2</sup>

### FLAT DESIGN COMPONENTS

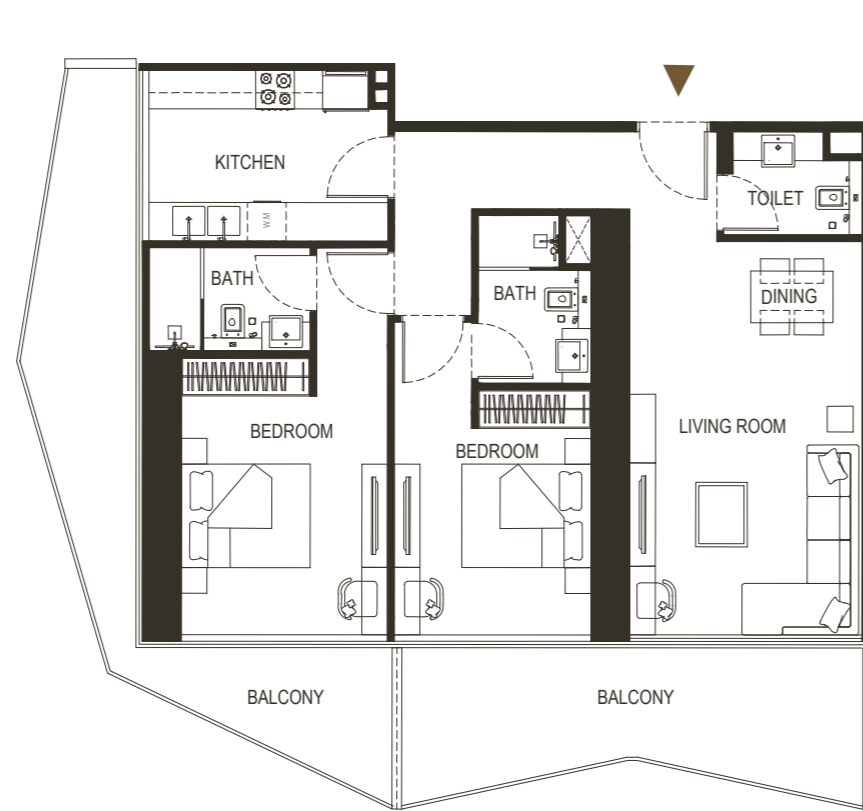
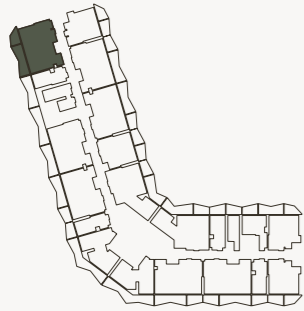
MASTER BATH	5 m <sup>2</sup>
MASTER BEDROOM	19 m <sup>2</sup>
LIVING	13 m <sup>2</sup>
KITCHEN & DINING	9 m <sup>2</sup>
BATH	4 m <sup>2</sup>
BEDROOM	12 m <sup>2</sup>
CORRIDOR	9 m <sup>2</sup>
LAUNDRY	1 m <sup>2</sup>
W.C	3 m <sup>2</sup>



6. Calculation of suite area is measured as the area bounded by the centre line of demising or partition walls separating one unit from another unit, the exterior face of all exterior walls, and the exterior face of the corridor wall enclosing the adjoining unit. 7. Calculation of balcony area is measured as the area bounded by the centre line of demising or partition walls separating one unit from another unit, the outmost face of the enclosing guard and the external face of the adjoining balcony. 8. The units are measured at typical floor in the building. Columns may vary in size depending on the floor level. 9. For each unit type, unit sizes and details might be different and your sales and purchase agreement will contain the actual size of each specific unit.

## 2 BEDROOM

TYPE - 9



AREA	SQ.M	SQ.FT
SUITE AREA	91.53 m <sup>2</sup>	985.22 ft <sup>2</sup>
BALCONY AREA	36.51 m <sup>2</sup>	392.22 ft <sup>2</sup>
TOTAL UNIT AREA	128.04 m <sup>2</sup>	1378.21 ft <sup>2</sup>

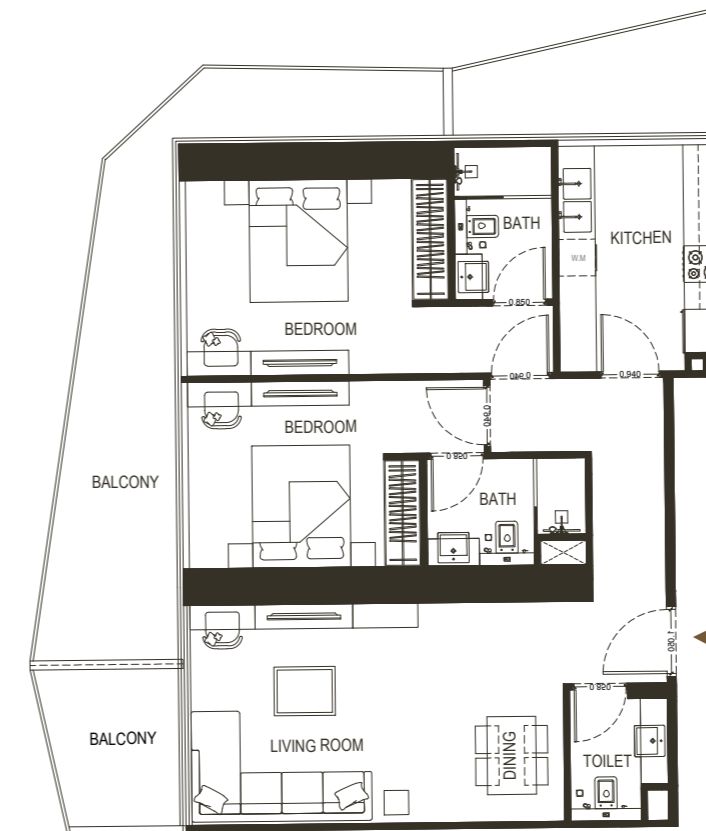
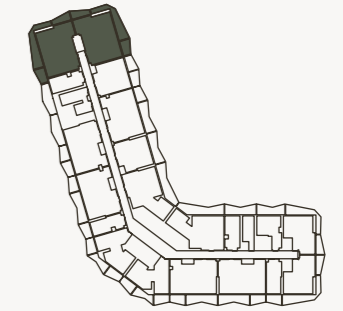
### FLAT DESIGN COMPONENTS

MASTER BATH	4 m <sup>2</sup>
MASTER BEDROOM	16 m <sup>2</sup>
LIVING	23 m <sup>2</sup>
KITCHEN & DINING	10 m <sup>2</sup>
BATH	4 m <sup>2</sup>
BEDROOM	13 m <sup>2</sup>
CORRIDOR	8 m <sup>2</sup>
W.C	3 m <sup>2</sup>

Disclaimer: 1. All stated dimensions and services whether in relation to the building, common areas or individual units are subject to government and local authority approvals. Final dimensions and services will be stated in your sales and purchase agreement 2. All room dimensions are measured to structural elements and exclude wall finishes and construction tolerances. 3. All dimensions have been provided by our consultant architects. 4. All materials, dimensions and drawings are approximate. Information is subject to change without notice. 5. Actual suite area may vary from the stated area. Drawings are not to scale. The Developer reserves the right to make any revisions whatsoever including for aesthetic purposes.

## 2 BEDROOM

TYPE - 10



AREA	SQ.M	SQ.FT
SUITE AREA	91.80 m <sup>2</sup>	988.12 ft <sup>2</sup>
BALCONY AREA	36.68 m <sup>2</sup>	394.82 ft <sup>2</sup>
TOTAL UNIT AREA	128.48 m <sup>2</sup>	1382.94 ft <sup>2</sup>

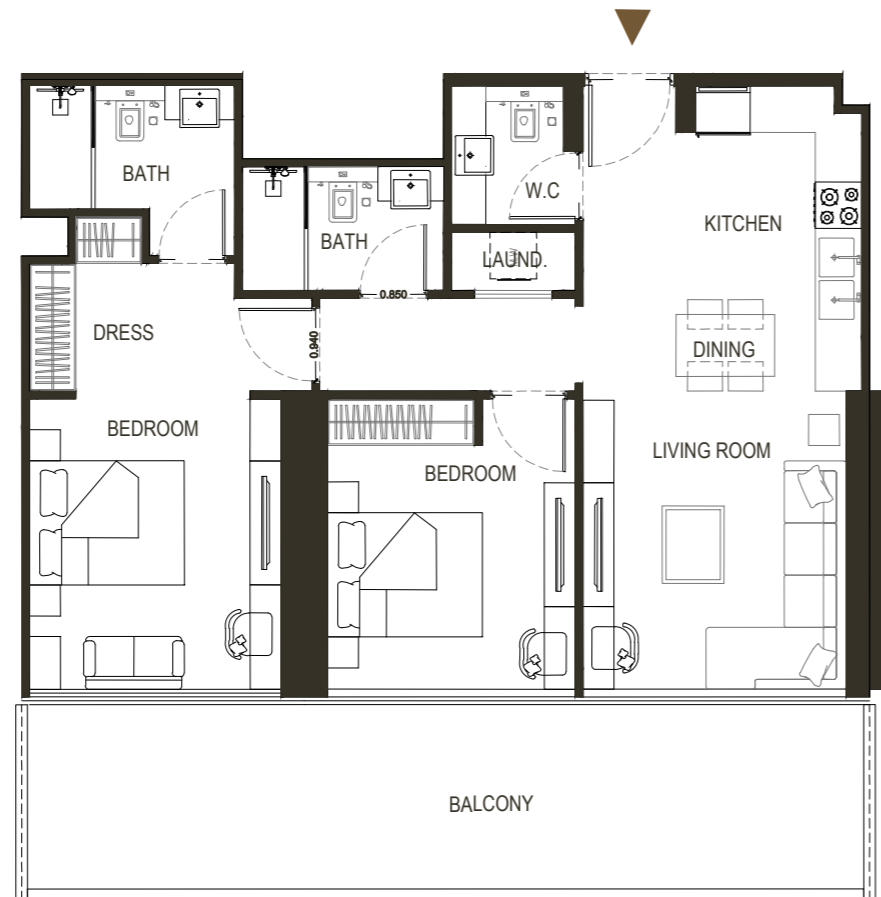
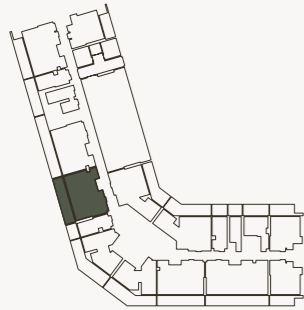
### FLAT DESIGN COMPONENTS

MASTER BATH	4 m <sup>2</sup>
MASTER BEDROOM	16 m <sup>2</sup>
LIVING & DINING	23 m <sup>2</sup>
KITCHEN	10 m <sup>2</sup>
BATH	4 m <sup>2</sup>
BEDROOM	13 m <sup>2</sup>
CORRIDOR	8 m <sup>2</sup>
W.C	3 m <sup>2</sup>

6. Calculation of suite area is measured as the area bounded by the centre line of demising or partition walls separating one unit from another unit, the exterior face of all exterior walls, and the exterior face of the corridor wall enclosing the adjoining unit. 7. Calculation of balcony area is measured as the area bounded by the centre line of demising or partition walls separating one unit from another unit, the outmost face of the enclosing guard and the external face of the adjoining balcony. 8. The units are measured at typical floor in the building. Columns may vary in size depending on the floor level. 9. For each unit type, unit sizes and details might be different and your sales and purchase agreement will contain the actual size of each specific unit.

# 2 BEDROOM

TYPE - 11



AREA	SQ.M	SQ.FT
SUITE AREA	84.30 m <sup>2</sup>	907.40 ft <sup>2</sup>
BALCONY AREA	27.52 m <sup>2</sup>	296.22 ft <sup>2</sup>
TOTAL UNIT AREA	111.82 m <sup>2</sup>	1203.62 ft <sup>2</sup>

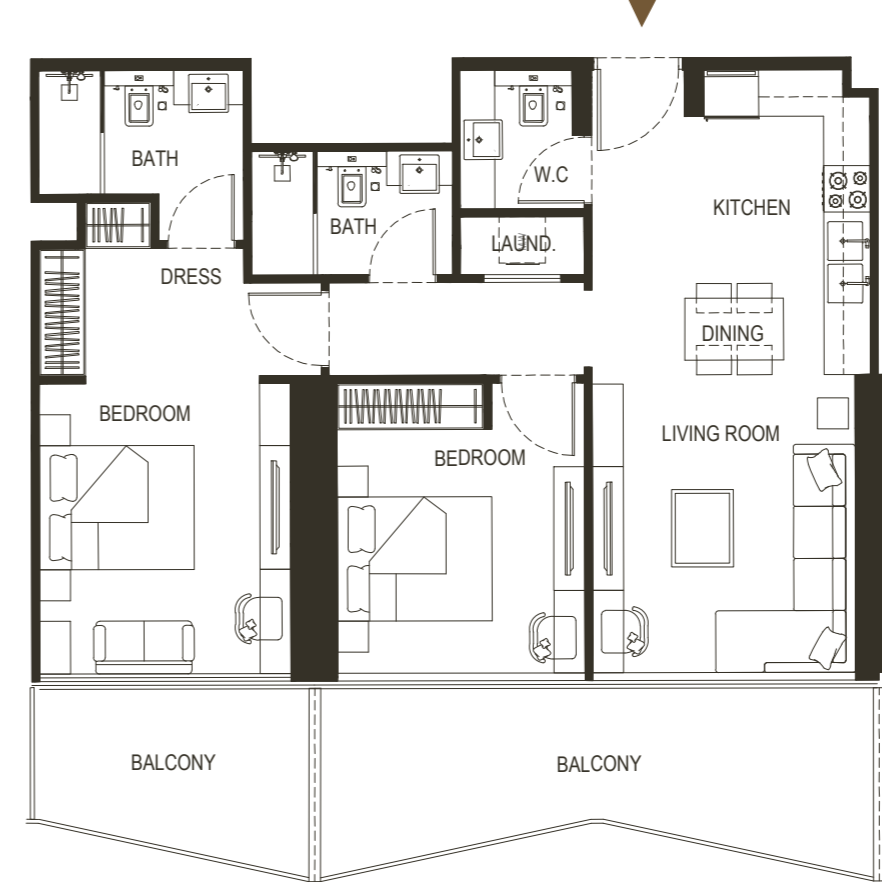
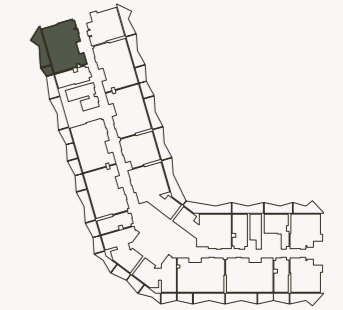
### FLAT DESIGN COMPONENTS

MASTER BATH	5 m <sup>2</sup>
MASTER BEDROOM	19 m <sup>2</sup>
LIVING	13 m <sup>2</sup>
KITCHEN & DINING	9 m <sup>2</sup>
BATH	4 m <sup>2</sup>
BEDROOM	12 m <sup>2</sup>
CORRIDOR	9 m <sup>2</sup>
LAUNDRY	1 m <sup>2</sup>
W.C	3 m <sup>2</sup>

Disclaimer: 1. All stated dimensions and services whether in relation to the building, common areas or individual units are subject to government and local authority approvals. Final dimensions and services will be stated in your sales and purchase agreement 2. All room dimensions are measured to structural elements and exclude wall finishes and construction tolerances. 3. All dimensions have been provided by our consultant architects. 4. All materials, dimensions and drawings are approximate. Information is subject to change without notice. 5. Actual suite area may vary from the stated area. Drawings are not to scale. The Developer reserves the right to make any revisions whatsoever including for aesthetic purposes.

# 2 BEDROOM

TYPE - 12



AREA	SQ.M	SQ.FT
SUITE AREA	84.30 m <sup>2</sup>	907.39 ft <sup>2</sup>
BALCONY AREA	23.53m <sup>2</sup>	253.27 ft <sup>2</sup>
TOTAL UNIT AREA	107.83 m <sup>2</sup>	1160.67 ft <sup>2</sup>

### FLAT DESIGN COMPONENTS

MASTER BATH	5 m <sup>2</sup>
MASTER BEDROOM	19 m <sup>2</sup>
LIVING	13 m <sup>2</sup>
KITCHEN & DINING	9 m <sup>2</sup>
BATH	4 m <sup>2</sup>
BEDROOM	12 m <sup>2</sup>
CORRIDOR	9 m <sup>2</sup>
LAUNDRY	1 m <sup>2</sup>
W.C	3 m <sup>2</sup>

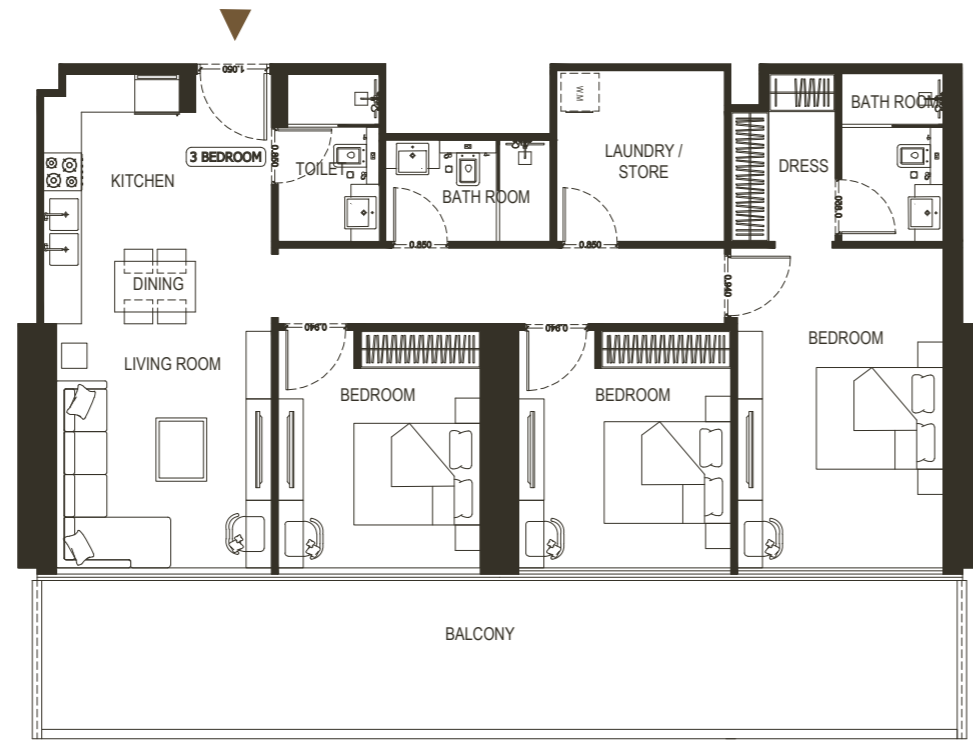
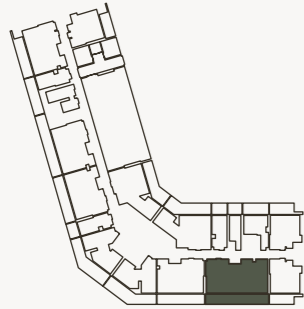
6. Calculation of suite area is measured as the area bounded by the centre line of demising or partition walls separating one unit from another unit, the exterior face of all exterior walls, and the exterior face of the corridor wall enclosing the adjoining unit. 7. Calculation of balcony area is measured as the area bounded by the centre line of demising or partition walls separating one unit from another unit, the outmost face of the enclosing guard and the external face of the adjoining balcony. 8. The units are measured at typical floor in the building. Columns may vary in size depending on the floor level. 9. For each unit type, unit sizes and details might be different and your sales and purchase agreement will contain the actual size of each specific unit.





# 3 BEDROOM

TYPE - 1



AREA	SQ.M	SQ.FT
SUITE AREA	113.10 m <sup>2</sup>	1217.40 ft <sup>2</sup>
BALCONY AREA	36.31 m <sup>2</sup>	390.84 ft <sup>2</sup>
TOTAL UNIT AREA	149.41 m <sup>2</sup>	1608.24 ft <sup>2</sup>

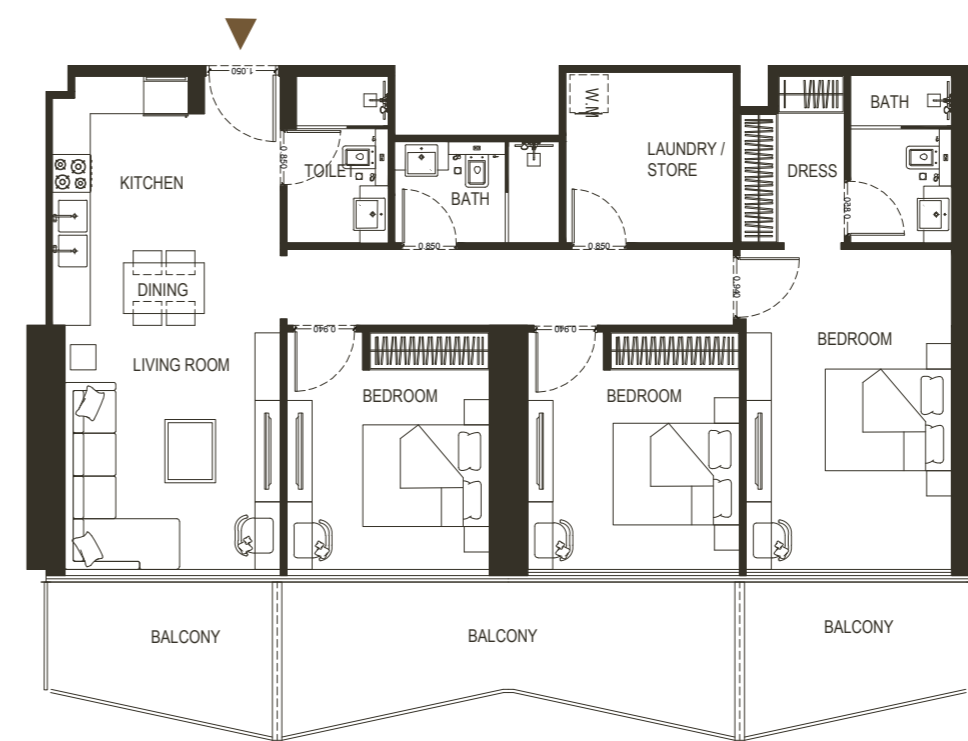
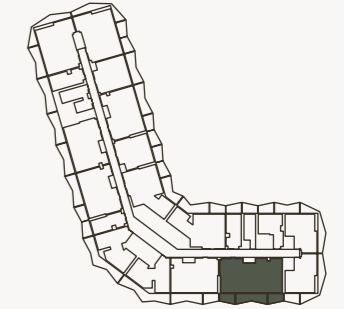
## FLAT DESIGN COMPONENTS

MASTER BATH	4 m <sup>2</sup>
MASTER BEDROOM	21 m <sup>2</sup>
LIVING	13 m <sup>2</sup>
KITCHEN & DINING	14 m <sup>2</sup>
BATH	4 m <sup>2</sup>
BEDROOM	12 m <sup>2</sup>
BEDROOM	13 m <sup>2</sup>
CORRIDOR	9 m <sup>2</sup>
TOILET	4 m <sup>2</sup>
LAUNDRY / STORE	7 m <sup>2</sup>

Disclaimer: 1. All stated dimensions and services whether in relation to the building, common areas or individual units are subject to government and local authority approvals. Final dimensions and services will be stated in your sales and purchase agreement 2. All room dimensions are measured to structural elements and exclude wall finishes and construction tolerances. 3. All dimensions have been provided by our consultant architects. 4. All materials, dimensions and drawings are approximate. Information is subject to change without notice. 5. Actual suite area may vary from the stated area. Drawings are not to scale. The Developer reserves the right to make any revisions whatsoever including for aesthetic purposes.

# 3 BEDROOM

TYPE - 2



AREA	SQ.M	SQ.FT
SUITE AREA	113.18 m <sup>2</sup>	1218.25 ft <sup>2</sup>
BALCONY AREA	31.53 m <sup>2</sup>	339.38 ft <sup>2</sup>
TOTAL UNIT AREA	144.71 m <sup>2</sup>	1557.64 ft <sup>2</sup>

## FLAT DESIGN COMPONENTS

MASTER BATH	4 m <sup>2</sup>
MASTER BEDROOM	21 m <sup>2</sup>
LIVING	13 m <sup>2</sup>
KITCHEN & DINING	14 m <sup>2</sup>
BATH	4 m <sup>2</sup>
BEDROOM	12 m <sup>2</sup>
BEDROOM	13 m <sup>2</sup>
CORRIDOR	9 m <sup>2</sup>
TOILET	4 m <sup>2</sup>
LAUNDRY / STORE	7 m <sup>2</sup>

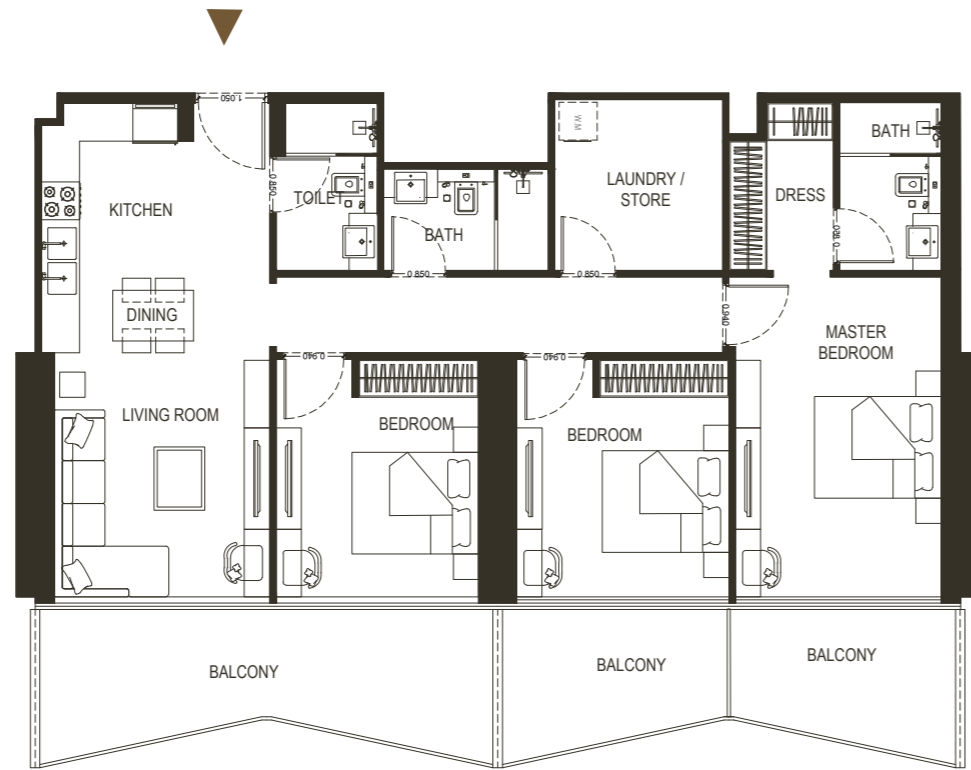
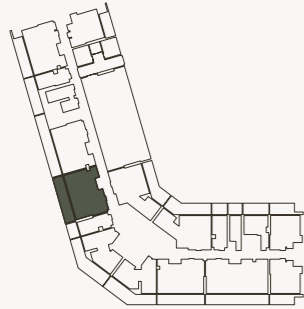
6. Calculation of suite area is measured as the area bounded by the centre line of demising or partition walls separating one unit from another unit, the exterior face of all exterior walls, and the exterior face of the corridor wall enclosing the adjoining unit. 7. Calculation of balcony area is measured as the area bounded by the centre line of demising or partition walls separating one unit from another unit, the outmost face of the enclosing guard and the external face of the adjoining balcony. 8. The units are measured at typical floor in the building. Columns may vary in size depending on the floor level. 9. For each unit type, unit sizes and details might be different and your sales and purchase agreement will contain the actual size of each specific unit.



FLOOR PLAN

# 3 BEDROOM

TYPE - 3



AREA	SQ.M	SQ.FT
SUITE AREA	113.18 m <sup>2</sup>	1218.25 ft <sup>2</sup>
BALCONY AREA	31.52 m <sup>2</sup>	339.28 ft <sup>2</sup>
TOTAL UNIT AREA	144.70 m <sup>2</sup>	1557.53 ft <sup>2</sup>

### FLAT DESIGN COMPONENTS

MASTER BATH	4 m <sup>2</sup>
MASTER BEDROOM	21 m <sup>2</sup>
LIVING	13 m <sup>2</sup>
KITCHEN & DINING	14 m <sup>2</sup>
BATH	4 m <sup>2</sup>
BEDROOM	12 m <sup>2</sup>
BEDROOM	13 m <sup>2</sup>
CORRIDOR	9 m <sup>2</sup>
TOILET	4 m <sup>2</sup>
LAUNDRY / STORE	7 m <sup>2</sup>

Disclaimer: 1. All stated dimensions and services whether in relation to the building, common areas or individual units are subject to government and local authority approvals. Final dimensions and services will be stated in your sales and purchase agreement 2. All room dimensions are measured to structural elements and exclude wall finishes and construction tolerances. 3. All dimensions have been provided by our consultant architects. 4. All materials, dimensions and drawings are approximate. Information is subject to change without notice. 5. Actual suite area may vary from the stated area. Drawings are not to scale. The Developer reserves the right to make any revisions whatsoever including for aesthetic purposes.





