



SERENIA LIVING

SKY MANSIONS

Dubai's Ultimate Beachfront Residences



PRIVATE INFINITY POOLS WITH INCREDIBLE VIEWS



BREATHTAKING DOUBLE-HEIGHT LIVING ROOM WITH EXPANSIVE TERRACES



CONTENTS

PRELUDE

06

EXCLUSIVE FEATURES

08

THE RESERVE OWNERS' CLUB

29

THE SKY MANSIONS HIGHLIGHTS & LAYOUTS

33

PRELUDE





SKY MANSIONS

This limited edition of 4 unique Sky Mansions, reign supreme on the top floors of the 4 buildings of Serenia Living.

Ranging in size from 18,500 sqft to 25,000 sqft, each Sky Mansion offers unparalleled, 360° views, custom interiors, double-height ceilings, a private swimming pool, and a dedicated gym.

A Limited Collection of 4 Sky Mansions

360° Views with 8.5m ceiling

Private Pool

Dedicated Gym

Exclusive Access to THE RESERVE Owner's Club



BREATHTAKING DOUBLE-HEIGHT
LIVING ROOMS



BREATHTAKING DOUBLE-HEIGHT LIVING ROOMS



Sky Mansion 1: Living Room



BREATHTAKING DOUBLE-HEIGHT LIVING ROOMS



Sky Mansion 3: Living Room



BREATHTAKING DOUBLE-HEIGHT LIVING ROOMS



Sky Mansion 3: Living Room



BREATHTAKING DOUBLE-HEIGHT LIVING ROOMS



Sky Mansion 4: Living Room



EXQUISITE DINING SPACES



EXQUISITE DINING SPACES



SKy Mansion 4: Dining Room



EXQUISITE DINING SPACES



Sky Mansion 1: Dining Room



EXPANSIVE
OUTDOOR TERRACES



EXPANSIVE OUTDOOR TERRACES



Sky Mansion 1: Outdoor Dining Area



EXPANSIVE OUTDOOR TERRACES



Sky Masnsion 1: Indoor & Outdoor Kitchen & Dining Area



EXPANSIVE OUTDOOR TERRACES



Sky Mansion 1: Indoor & Outdoor Living Area



EXPANSIVE OUTDOOR TERRACES



Sky Mansion 2: Indoor & Outdoor Dining Area



PRIVATE INFINITY POOLS
WITH INCREDIBLE VIEWS



PRIVATE INFINITY POOLS WITH INCREDIBLE VIEWS



Sky Mansion 3: Infinity Pool



PRIVATE INFINITY POOLS WITH INCREDIBLE VIEWS



Sky Mansion 3: Infinity Pool



PRIVATE GYM & SPA





PRIVATE GYM & SPA



VIP PARKINGS



DESIGNATED VIP PARKINGS*



*Terms & Conditions Apply



THE RESERVE OWNERS' CLUB

THE RESERVE



EXCLUSIVE ACCESS TO PREMIUM SERVICES



BESPOKE CONCIERGE SERVICES

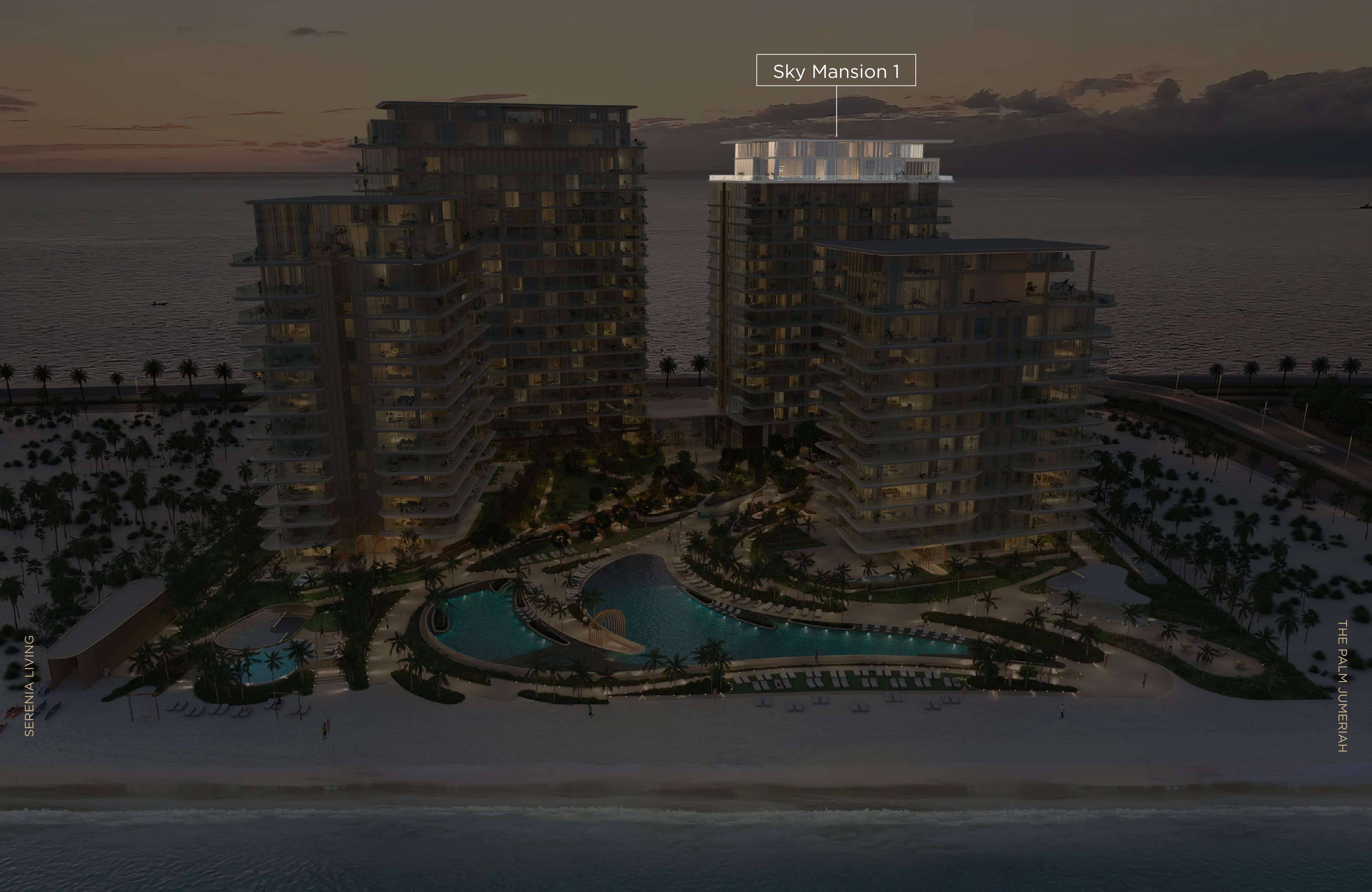


PRIVATE CHAUFFEUR SERVICE



SKY MANSION 1





Sky Mansion 1

SERENIA LIVING

THE PALM JUMERIAH

HIGHLIGHTS

19,019 SQ.FT. (1,768 SQ.M.)

4 bedrooms + maid's room

Private infinity pool

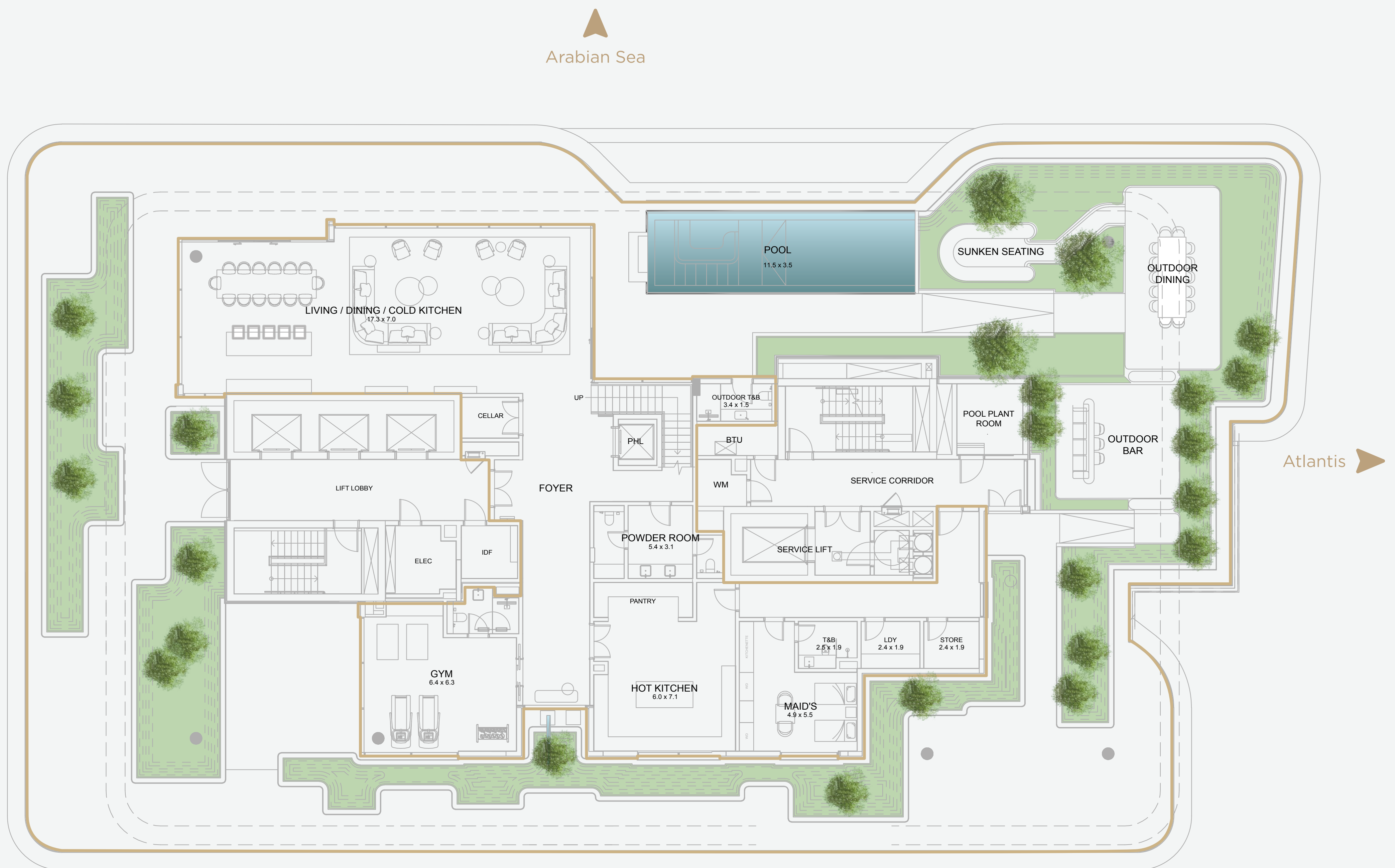
Private gym

Private office

Private lift lobby



SKY MANSION 1



Arabian Sea

Atlantis

Palm Jumeirah/
Dubai Marina

Palm Jumeirah/Dubai Marina

Burj Al Arab

TOWER 1 SKY MANSION LEVEL 16

LEVEL 16		LEVEL 17		TOTAL AREA
	Internal area 4,047 sq.ft (376 sq.m.)		Terrace area 9,870 sq.ft (917 sq.m.)	
	Internal area 4,951 sq.ft (460 sq.m.)		Terrace area 161 sq.ft (15 sq.m.)	



SKY MANSION 1

Arabian Sea



Atlantis

Palm Jumeirah/
Dubai Marina

Palm Jumeirah/Dubai Marina

Burj Al Arab

TOWER 1 SKY MANSION LEVEL 17



LEVEL 16

Internal area
4,047 sq.ft
(376 sq.m.)

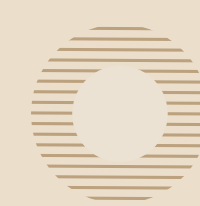


Terrace area
9,870 sq.ft
(917 sq.m.)

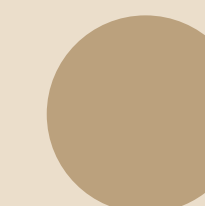


LEVEL 17

Internal area
4,951 sq.ft
(460 sq.m.)



Terrace area
161 sq.ft
(15 sq.m.)



TOTAL AREA

19,029 sq.ft
(1,768 sq.m.)



SKY MANSION 2



Sky Mansion 2

SERENIA LIVING

THE PALM JUMERIAH

HIGHLIGHTS

24,358 SQ.FT. (2,263 SQ.M.)

6 bedrooms + maid's room

Private infinity pool

Private gym

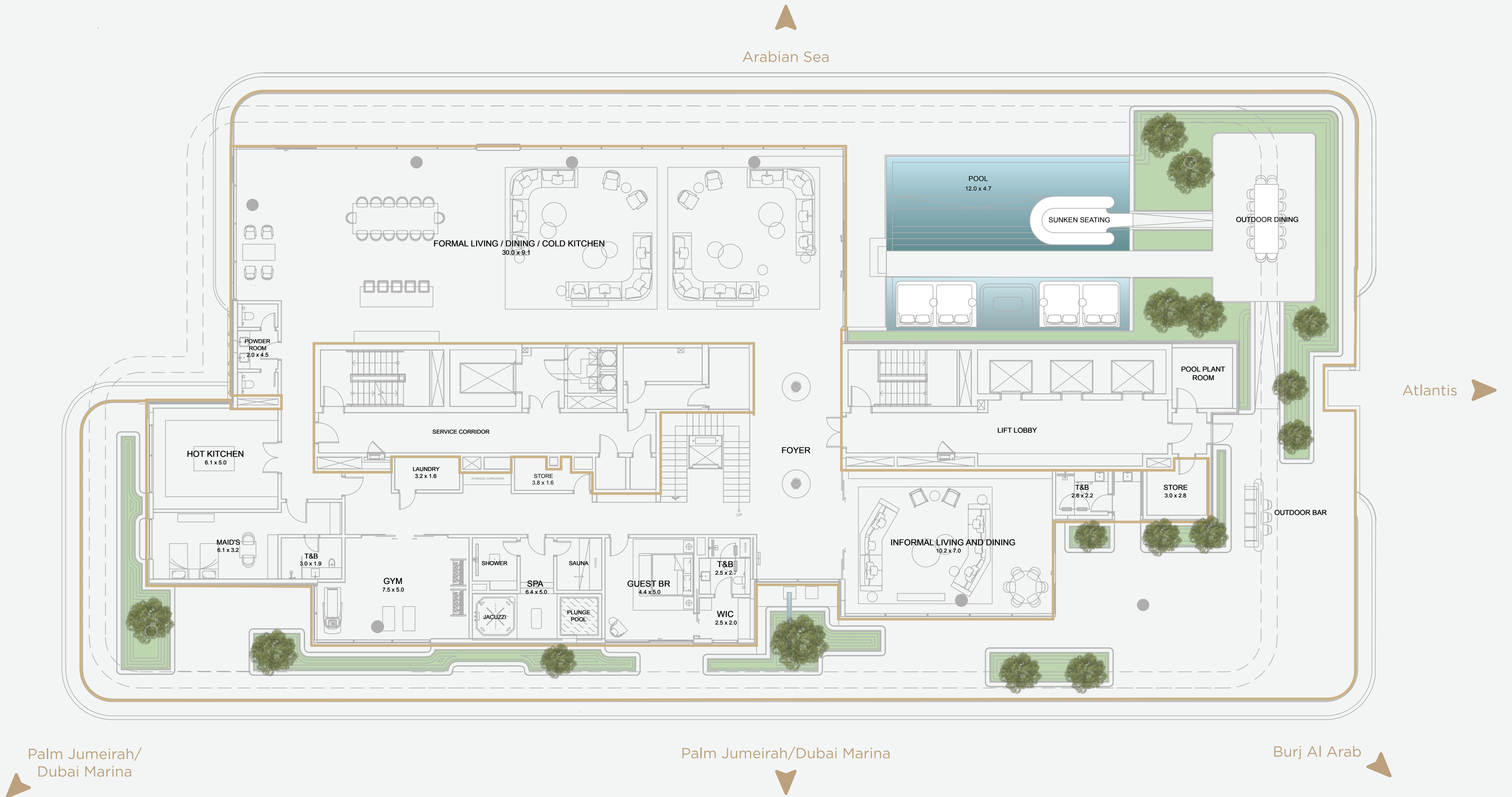
Private office

Private lift lobby

Private SPA



SKY MANSION 2



TOWER 2 SKY MANSION LEVEL 18



LEVEL 18
Internal area
7,728 sq.ft
(718 sq.m.)



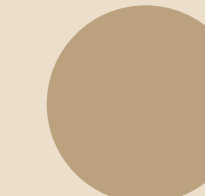
Terrace area
8,945 sq.ft
(831 sq.m.)



LEVEL 19
Internal area
7,319 sq.ft
(680 sq.m.)



Terrace area
366 sq.ft
(34 sq.m.)



TOTAL AREA
24,358 sq.ft
(2,263 sq.m.)



SKY MANSION 2



TOWER 2 SKY MANSION LEVEL 19

LEVEL 18		LEVEL 19		TOTAL AREA	
	Internal area 7,728 sq.ft (718 sq.m.)		Terrace area 8,945 sq.ft (831 sq.m.)		24,358 sq.ft (2,263 sq.m.)



SKY MANSION 3





Sky Mansion 3

SERENIA LIVING

THE PALM JUMERIAH

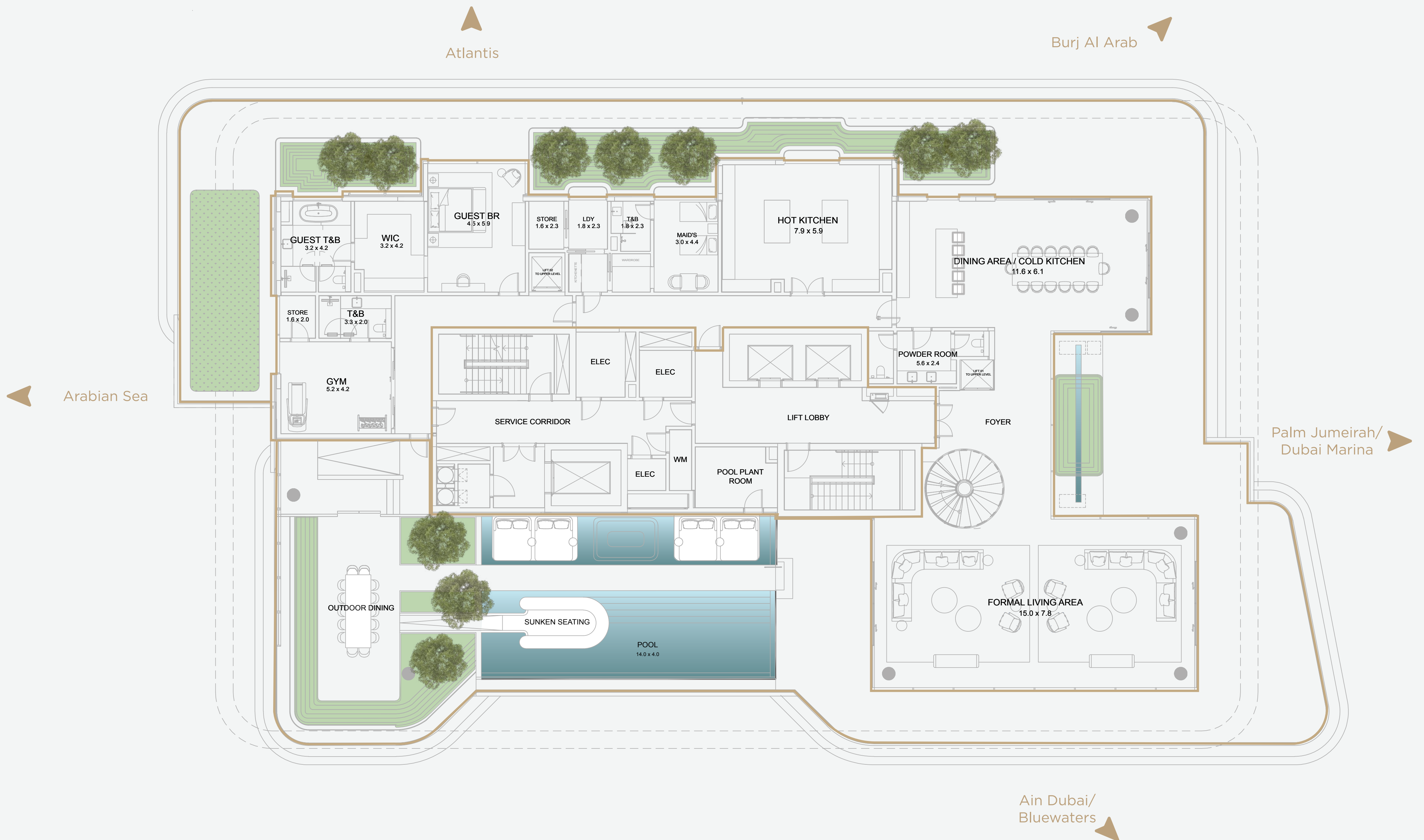
HIGHLIGHTS

- 18,287 SQ.FT. (1,699 SQ.M.)
- 5 bedrooms + maid's room
- Private infinity pool

- Private gym
- Private office
- Private lift lobby



SKY MANSION 3

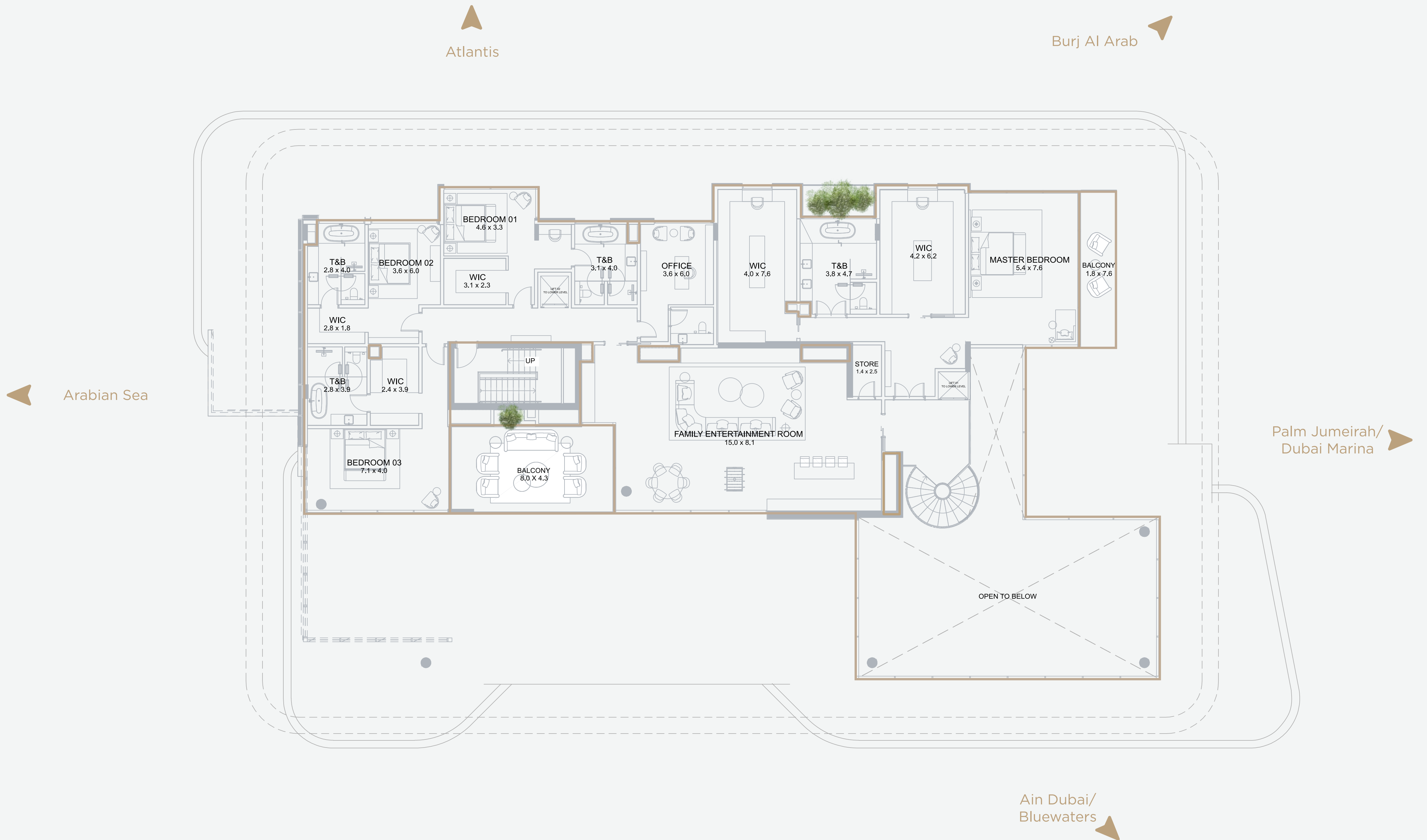


TOWER 3 SKY MANSION LEVEL 13

LEVEL 13		LEVEL 14		TOTAL AREA
	Internal area 5,360sq.ft (498 sq.m.)		Internal area 5,113 sq.ft (475 sq.m.)	
	Terrace area 7,556 sq.ft (702 sq.m.)		Terrace area 258 sq.ft (24 sq.m.)	18,287 sq.ft (1,699 sq.m.)



SKY MANSION 3



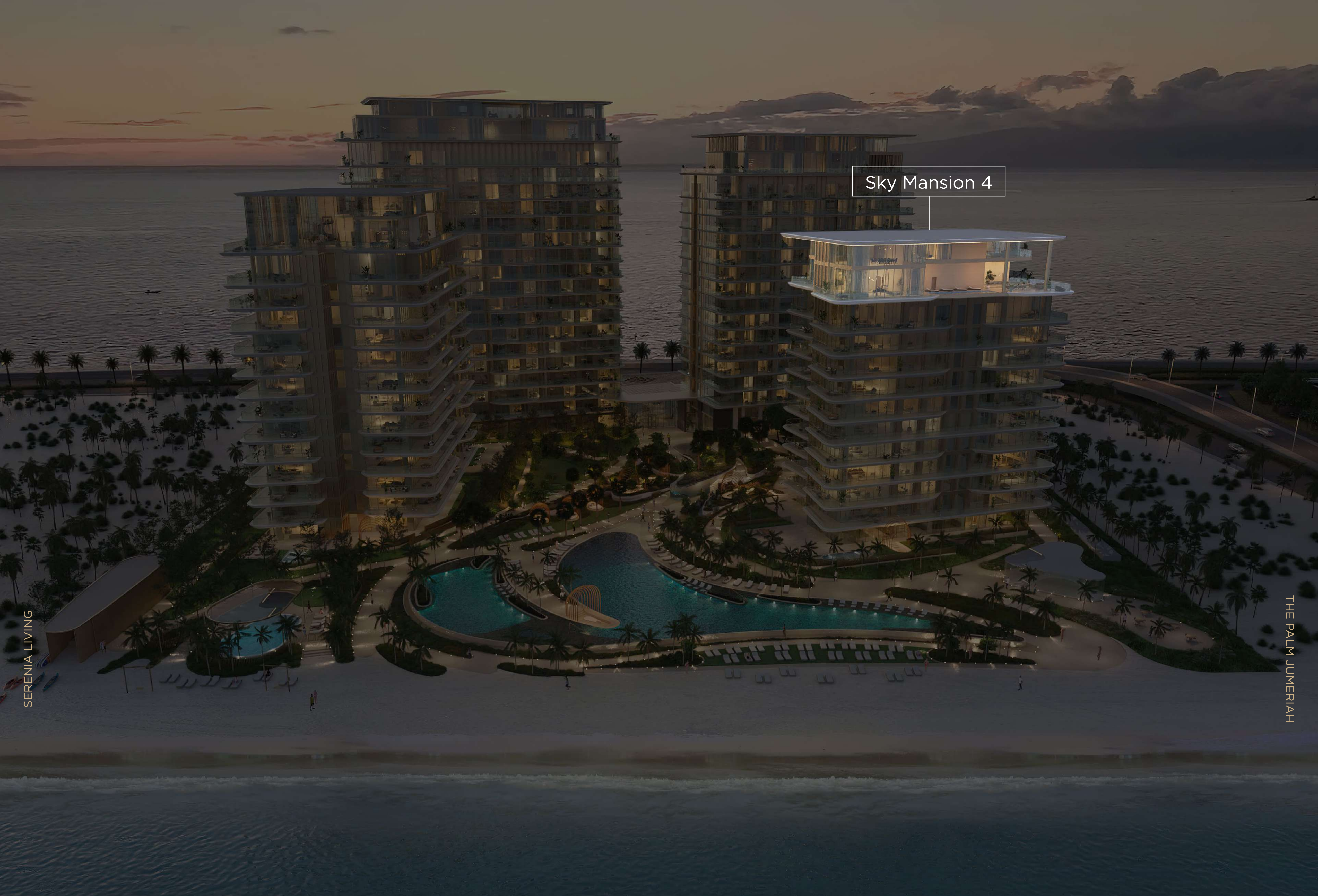
TOWER 3 SKY MANSION LEVEL 14

LEVEL 13		LEVEL 14		TOTAL AREA	
	Internal area 5,360sq.ft (498 sq.m.)		Terrace area 7,556 sq.ft (702 sq.m.)		18,287 sq.ft (1,699 sq.m.)



SKY MANSION 4





SERENIA LIVING

THE PALM JUMERIAH

Sky Mansion 4

HIGHLIGHTS

16,898 SQ.FT. (1,570 SQ.M.)

6 bedrooms + maid's room

Private infinity pool

Private lift lobby

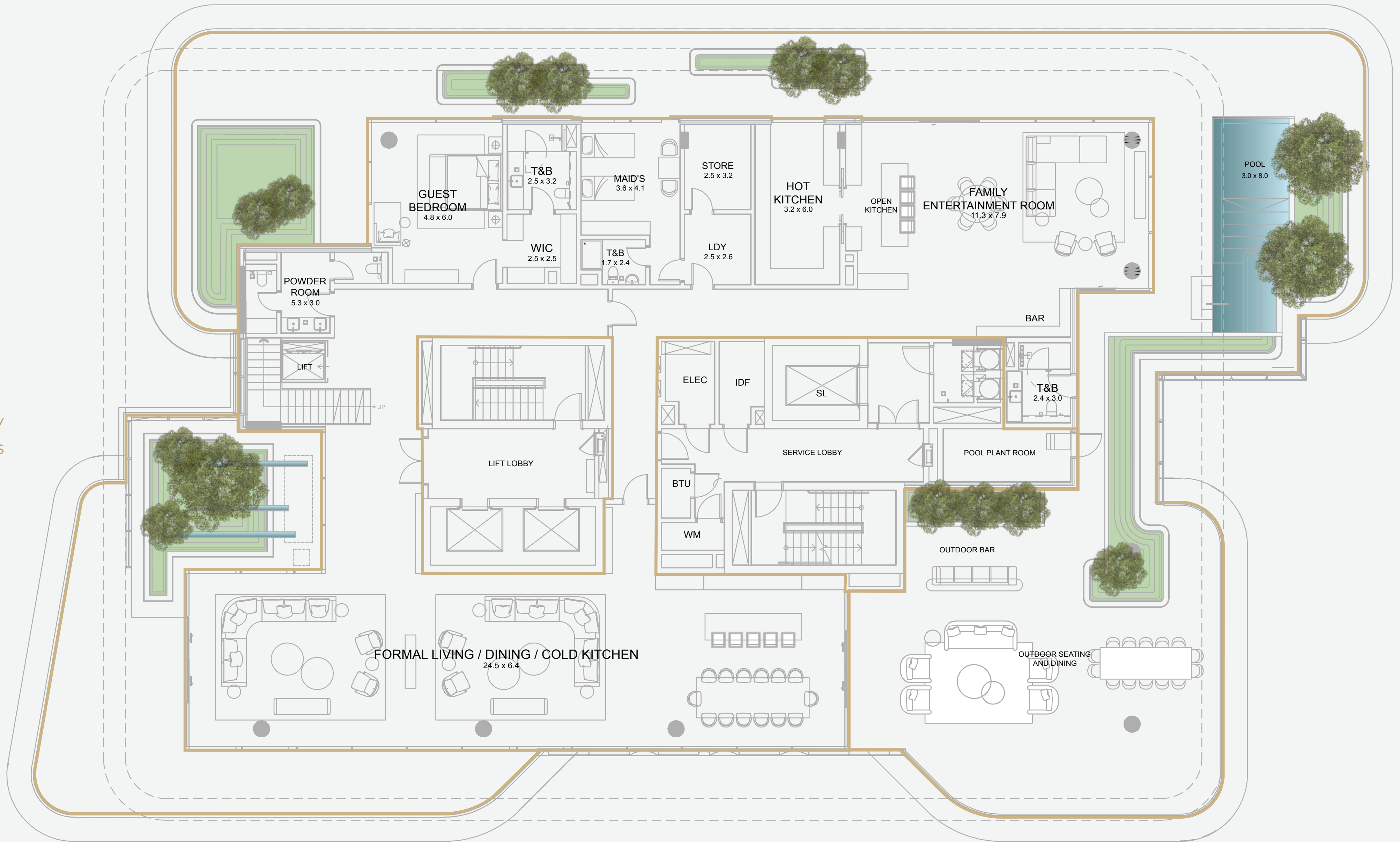


SKY MANSION 4

Arabian Sea

Atlantis

Ain Dubai/
Bluewaters



Palm Jumeirah/Dubai Marina

Burj Al Arab

TOWER 4 SKY MANSION LEVEL 11



Internal area
5,166 sq.ft
(480 sq.m.)



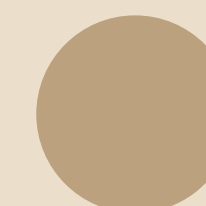
Terrace area
6,049 sq.ft
(562 sq.m.)



Internal area
5,640 sq.ft
(524 sq.m.)



Terrace area
43 sq.ft
(4 sq.m.)



TOTAL AREA
16,898 sq.ft
(1,570 sq.m.)

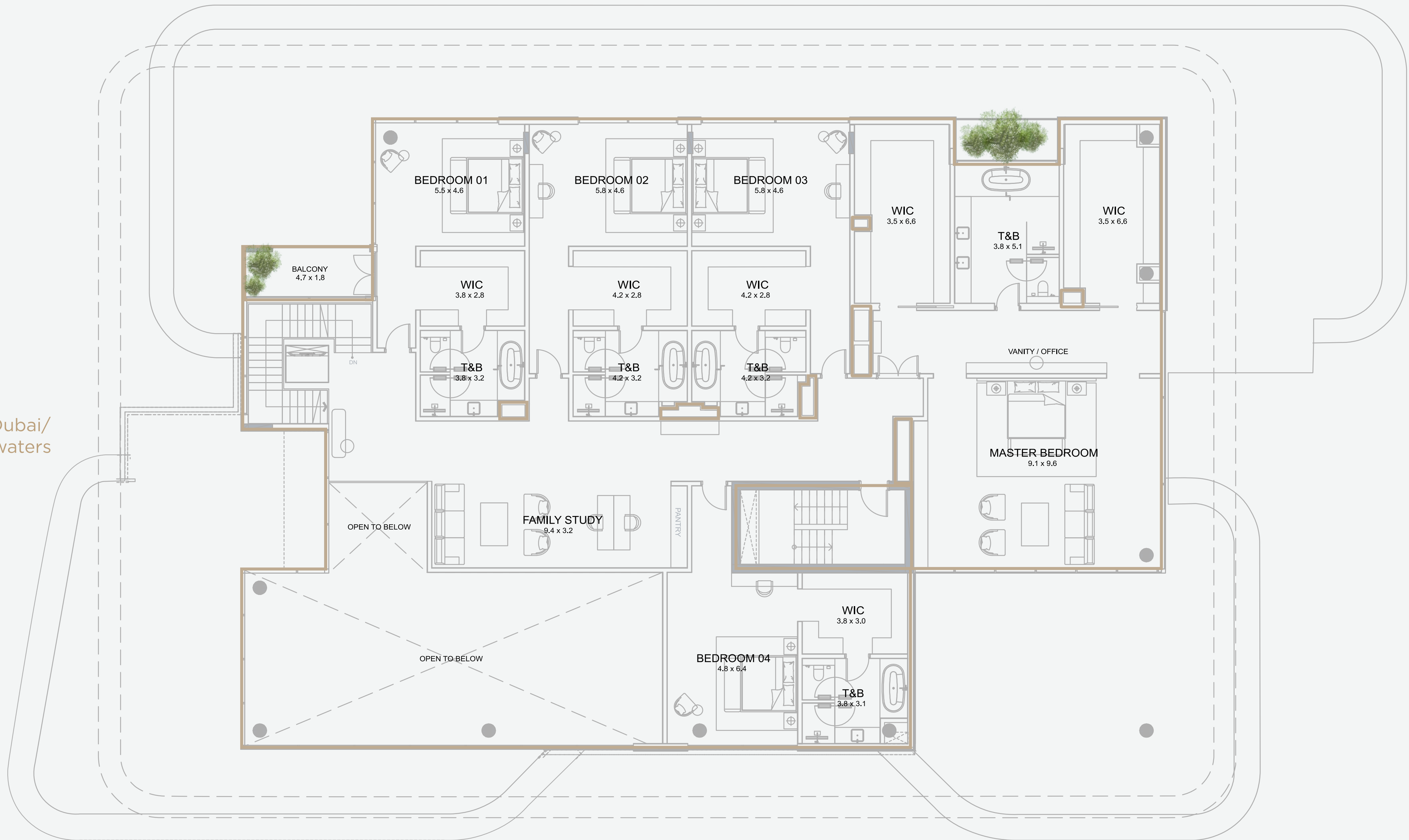


SKY MANSION 4

Arabian Sea

Atlantis

Ain Dubai/
Bluewaters



Palm Jumeirah/Dubai Marina

Burj Al Arab

TOWER 4 SKY MANSION LEVEL 12



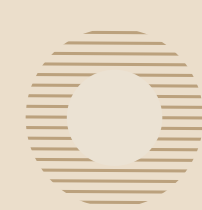
LEVEL 11
Internal area
5,166 sq.ft
(480 sq.m.)



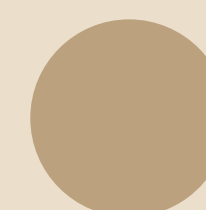
Terrace area
6,049 sq.ft
(562 sq.m.)



LEVEL 12
Internal area
5,640 sq.ft
(524 sq.m.)



Terrace area
43 sq.ft
(4 sq.m.)



TOTAL AREA
16,898 sq.ft
(1,570 sq.m.)





A project by



Developed by



DRN: 1068
PRN: 2420
TAN: 0012004307004
RPN: 1074982891

Expected completion date: 31 December 2025