



PENINSULA

ONE

a development by





PENINSULA ONE

The Tower Apartments

Peninsula One is the first development within a strategic and meticulously created master plan. It is the gateway to Dubai's most spectacular waterfront residential community in the Downtown district of Dubai.

The Tower Apartments in Peninsula One are perfectly tailored to cater for the everyday needs of the working professional, which will present a unique investment opportunity for first-time homeowners, or savvy investors alike. Masterfully planned to deliver 433 units over 36 floors, The Tower's design is focused on maximising Peninsula One's glorious waterfront setting.

Primarily consisting of studio and one-bedroom apartments, the location of The Tower Apartments in the heart of Business Bay positions the development as a fantastic investment proposition.

Peninsula One is scheduled for completion in Q4 2024.

APARTMENT TYPE	RANGING FROM
Studio	385 - 442 ft ²
One Bedroom	565 - 695 ft ²
Two Bedroom	898 - 968 ft ²





ONE

THE TOWER APARTMENTS





Located in the centre of Dubai's thriving financial hub, Peninsula One offers efficient and functionally designed apartments perfectly suited to the city's bustling professional lifestyle.





Peninsula One will offer residents breathtaking waterfront views of the surrounding Downtown district of Dubai. Floor-to-ceiling windows will emphasise the unique setting and maximise radiant beams of sunlight as they cascade into the spacious living areas.



Located directly on the stunning Dubai Canal waterfront, Peninsula One is a world-class residential community featuring an unrivalled range of spectacular views.





By combining Select Group's premium finishes with majestic waterfront settings, Peninsula One is the most sought after residential destination in Downtown Dubai.



Owning a home in Peninsula One means being one of the first homeowners in an exclusive new community development, located in the heart of Dubai's most vibrant district.





Thanks to elegant and contemporary lobbies, Peninsula One
instantaneously sets the tone as a stylish and modern address that residents
are proud to call home.



The Tower at Peninsula One provides residents with direct access to a stunning pool deck, showcasing spectacular views over Dubai Canal. In addition, it provides exclusive access to an unparalleled range of fitness equipment in a spacious and uniquely designed setting.



THE TOWER APARTMENT SPECIFICATIONS

GENERAL FINISHES

- Pristine porcelain tile flooring & skirting
- Gypsum board ceilings
- Timeless marble thresholds
- Textured HPL wardrobes & cupboards
- Solid core main entrance doors
- Semi-solid core internal doors

KITCHEN

- Quartz surface counter tops
- Stainless steel sinks
- Glass backsplash
- 2 gas hobs in studio apartments
- 4 gas hobs in 1 & 2 bedroom apartments
- Exactor fan
- Gas oven
- Fridge/freezer
- Connection point for washing machine



BATHROOM

- Stone washbasins
- Chrome-plated sanitary fittings
- Tastefully located mirrors
- Porcelain-tiled wet zone areas & ceilings

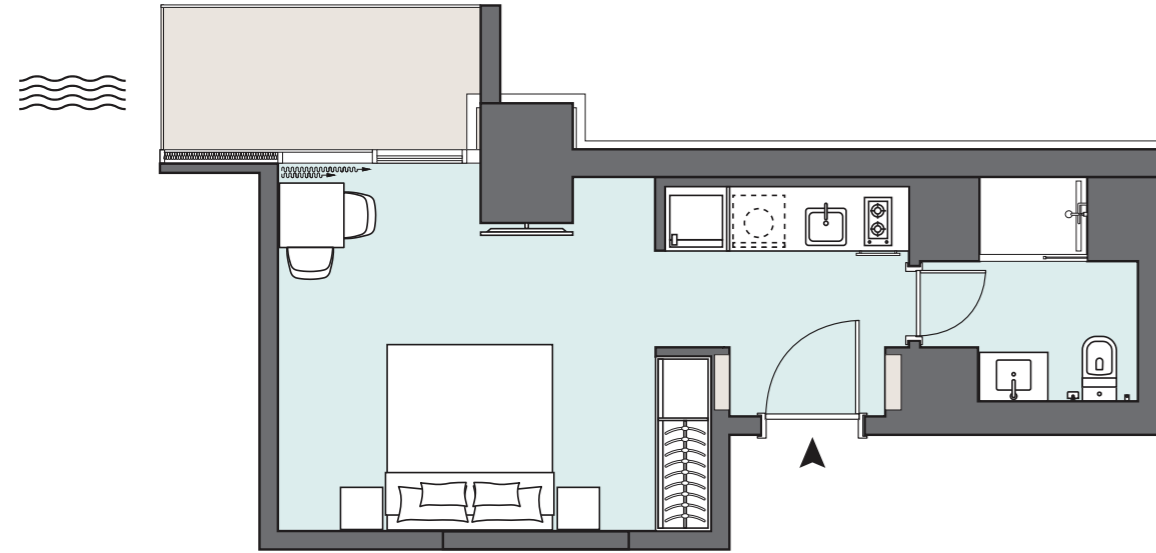
COMMUNAL AMENITIES

- Fully equipped 1,883 sq ft gym
- 420 m³ outdoor pool
- 20 m³ kids' pool
- Spacious communal lobby with fitted power points
- Gravel BBQ deck on podium level
- Electric car charging ports provided
- Bikes stands provided
- CCTV, fire alarm, main intercom station
- Audio intercom at lobby level
- Empower A/C cooling system

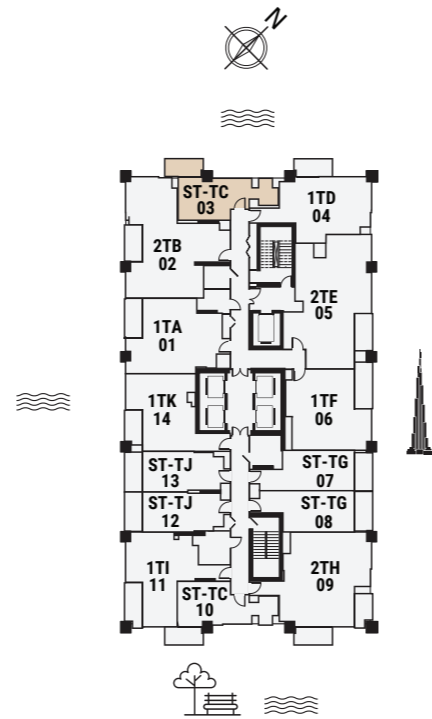


STUDIO APARTMENT

The Tower | Type TC | Unit 03
Floors 4-14 & 17-35



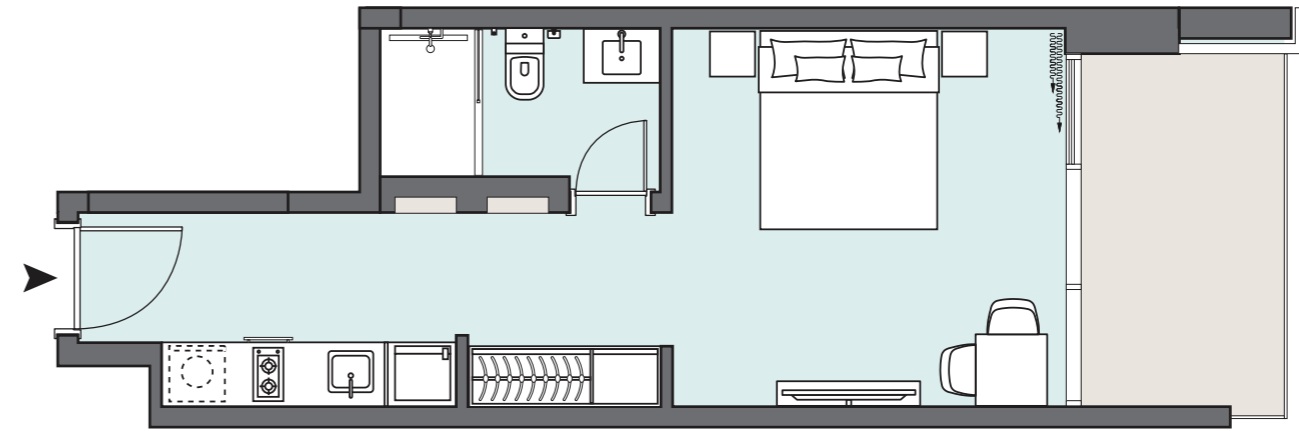
Apartment Area	31.95 m ²	343.91 ft ²
Balcony Area	5.88 m ²	63.29 ft ²
Total Area	37.83 m²	407.20 ft²



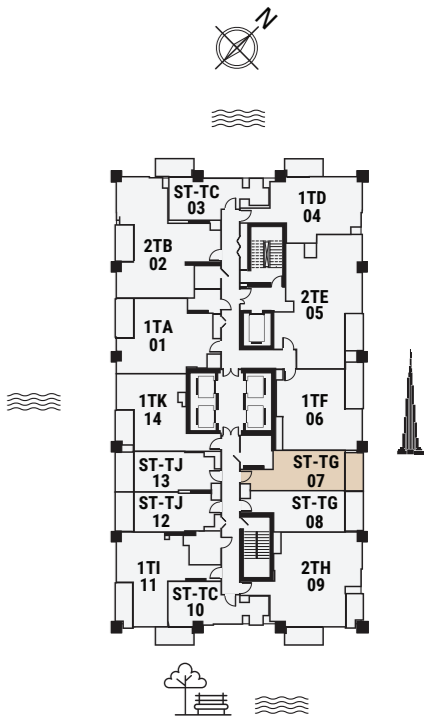
Floors 4-14, 17-35

STUDIO APARTMENT

The Tower | Type TG | Unit 07
Floors 4-6, 8-11,13-14, 18-21, 23-26, 28-31 & 33-35



Apartment Area	32.95 m ²	354.67 ft ²
Balcony Area	5.81 m ²	62.54 ft ²
Total Area	38.76 m²	417.21 ft²

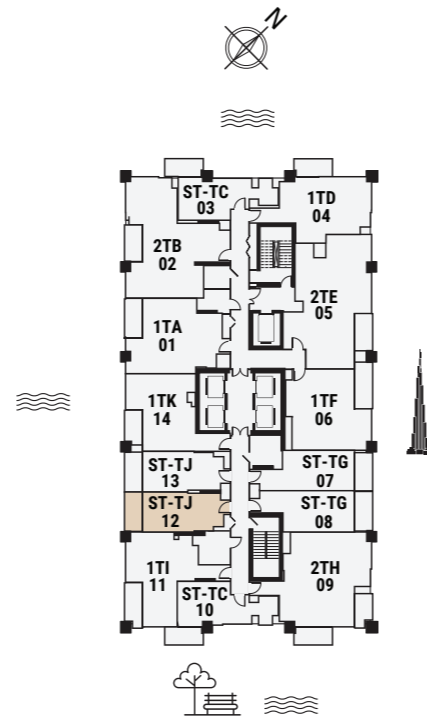
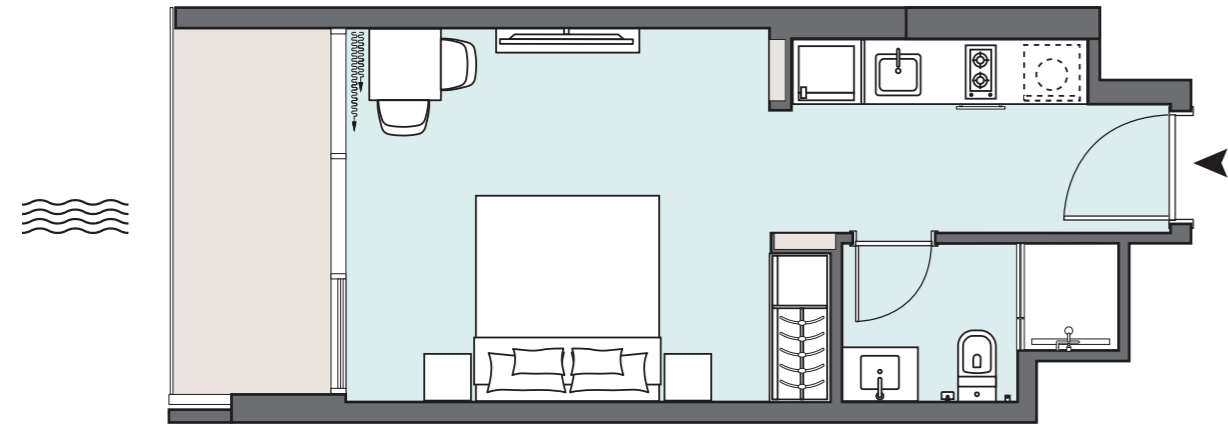


Floors 4-14, 17-35

STUDIO APARTMENT

The Tower | Type TJ | Unit 12

Floors 4-6, 8-11, 13-14, 18-21, 23-26, 28-31 & 33-35

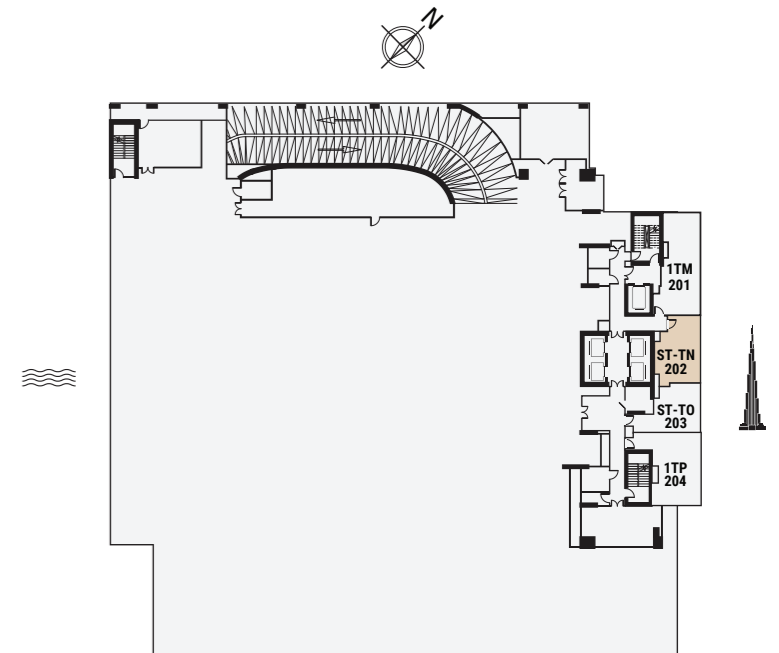
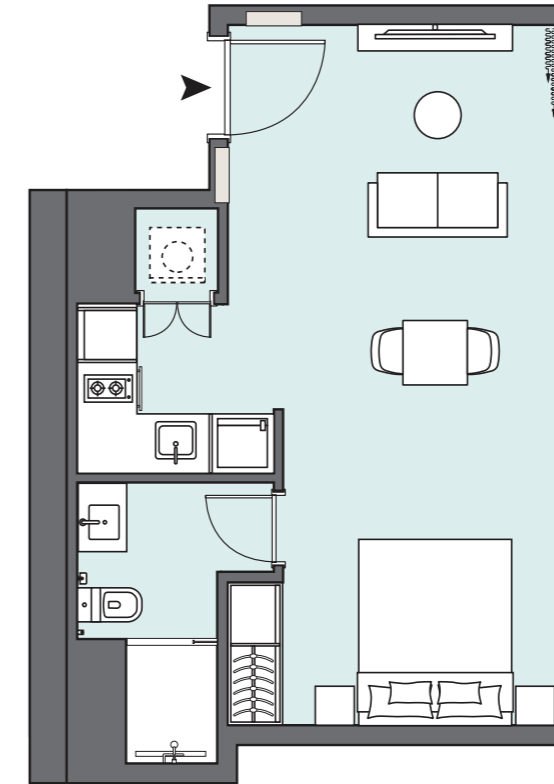


Floors 4-14, 17-35

Apartment Area	30.10 m ²	323.99 ft ²
Balcony Area	6.14 m ²	66.09 ft ²
Total Area	36.24 m²	390.08 ft²

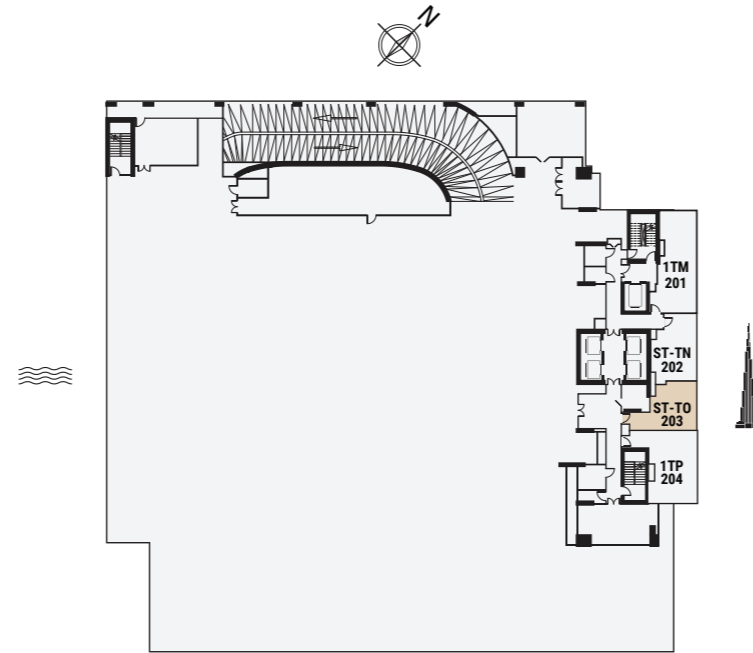
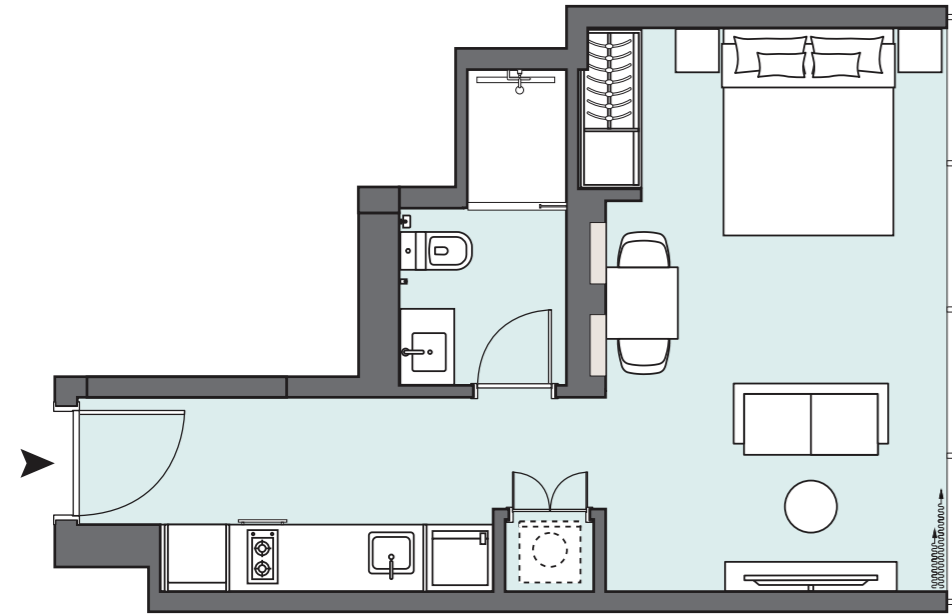
STUDIO APARTMENT

The Tower | Type TN | Unit 202



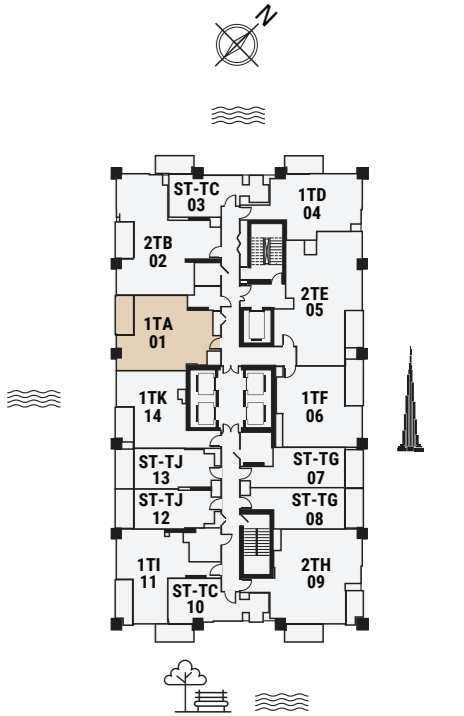
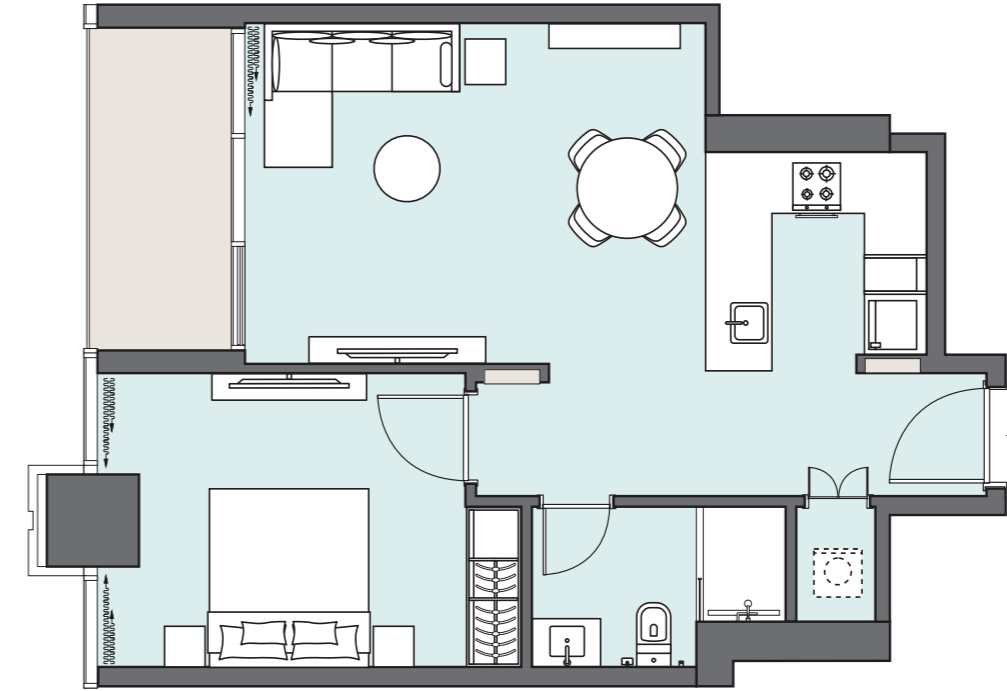
Floor 2

Apartment Area	39.49 m ²	425.07 ft ²
Balcony Area	N/A	N/A
Total Area	39.49 m²	425.07 ft²



Floor 2

Apartment Area	36.32 m ²	390.94 ft ²
Balcony Area	N/A	N/A
Total Area	36.32 m²	390.94 ft²

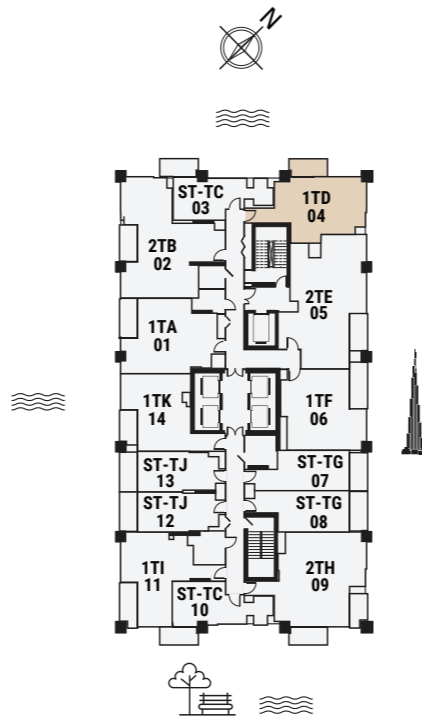
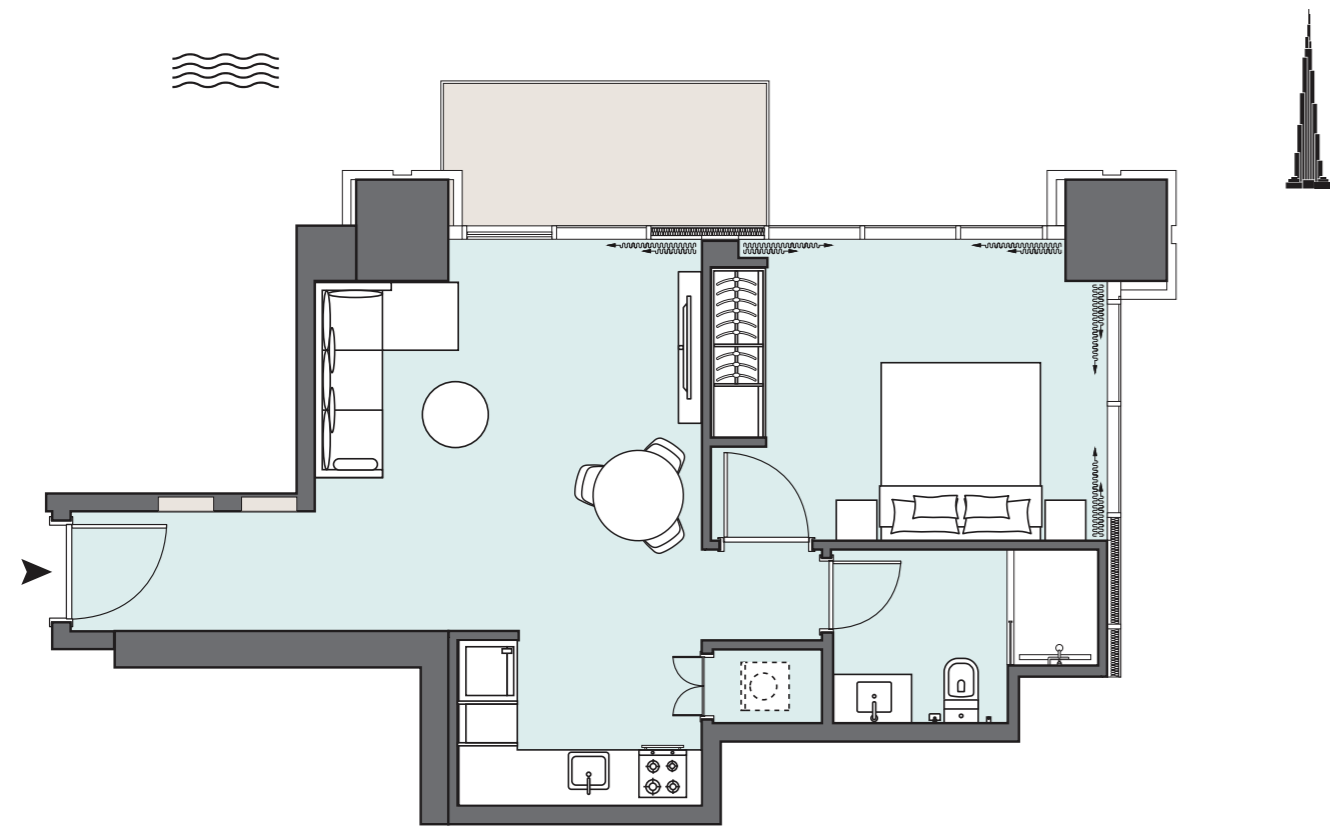


Floors 4-14, 17-35

Apartment Area	56.37 m ²	606.76 ft ²
Balcony Area	6.01 m ²	64.69 ft ²
Total Area	62.38 m²	671.45 ft²

1 BEDROOM

The Tower | Type TD | Unit 04
Floors 4-14 & 17-35

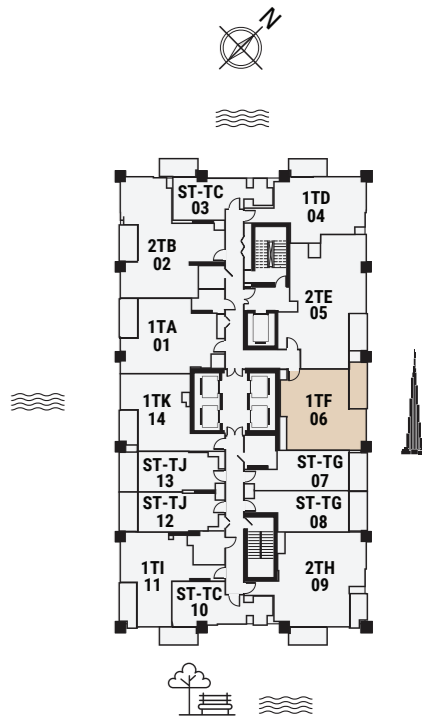
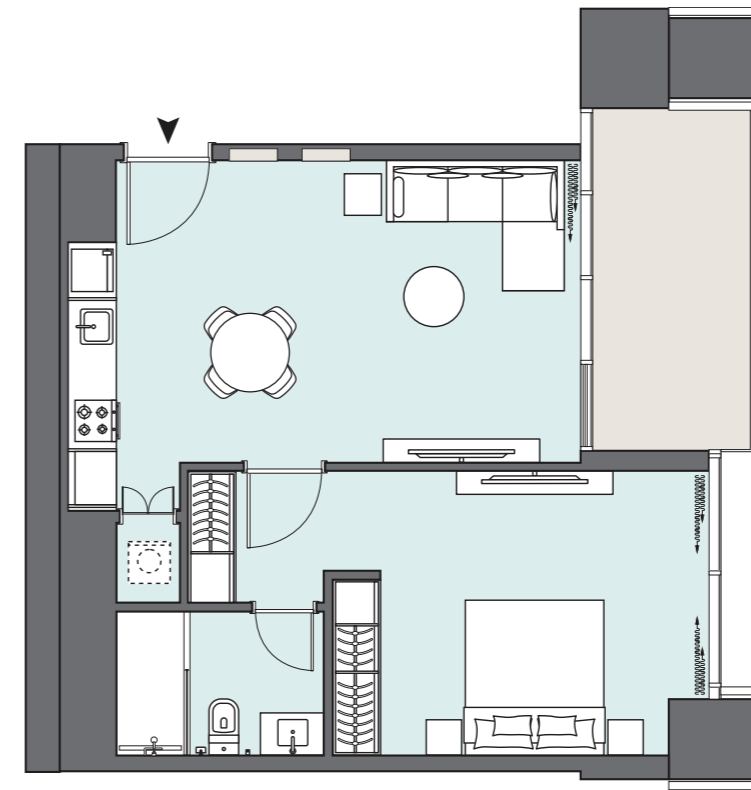


Floors 4-14, 17-35

Apartment Area	53.03 m ²	570.81 ft ²
Balcony Area	5.66 m ²	60.92 ft ²
Total Area	58.69 m²	631.73 ft²

1 BEDROOM

The Tower | Type TF | Unit 06
Floors 4-6, 8-11, 13-14, 18-21, 23-26, 28-31 & 33-35

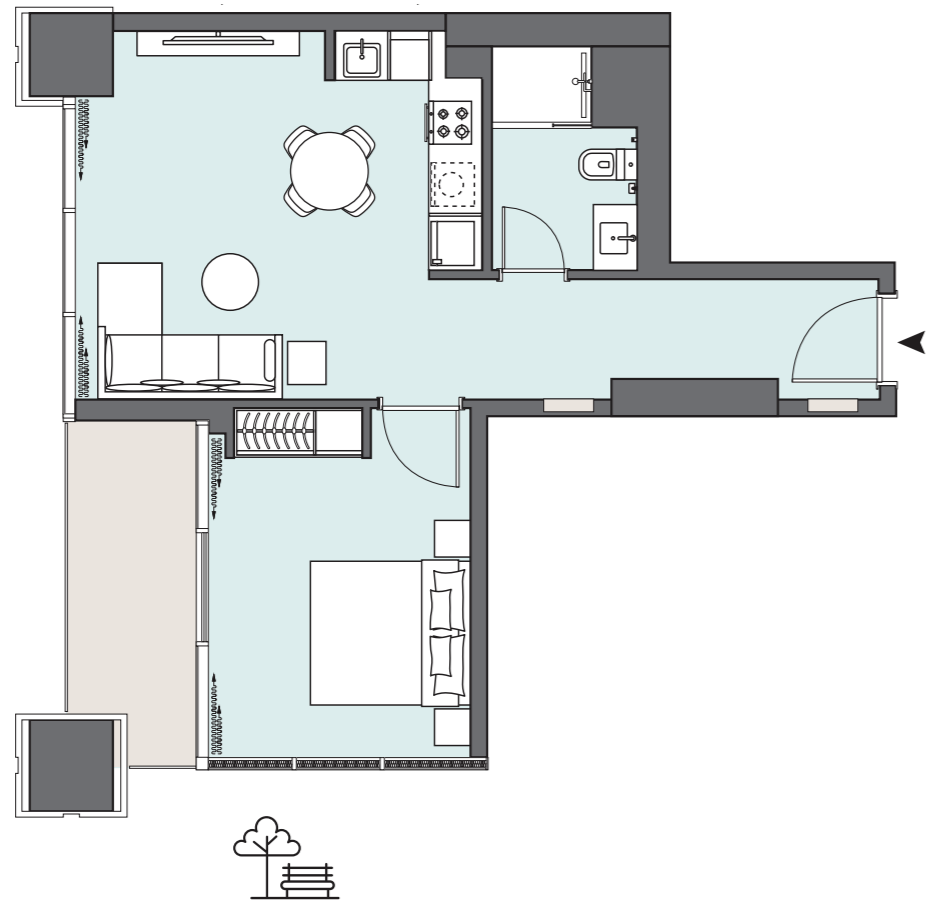


Floors 4-14, 17-35

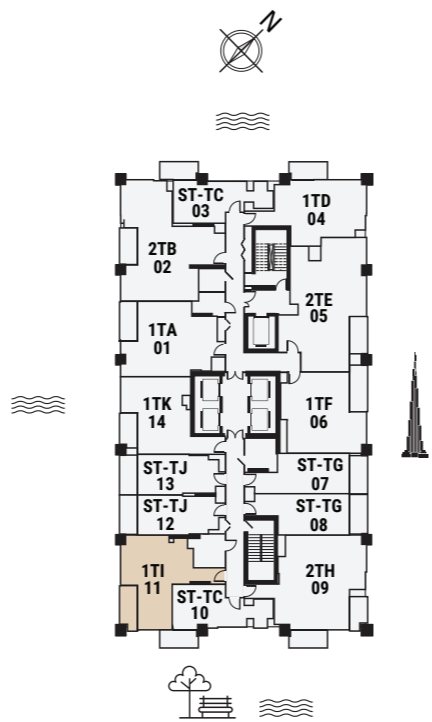
Apartment Area	54.44 m ²	585.99 ft ²
Balcony Area	7.18 m ²	77.28 ft ²
Total Area	61.62 m²	663.27 ft²

1 BEDROOM

The Tower | Type T1 | Unit 11
 Floors 4-6, 8-11, 13-14, 18-21, 23-26, 28-31 & 33-35



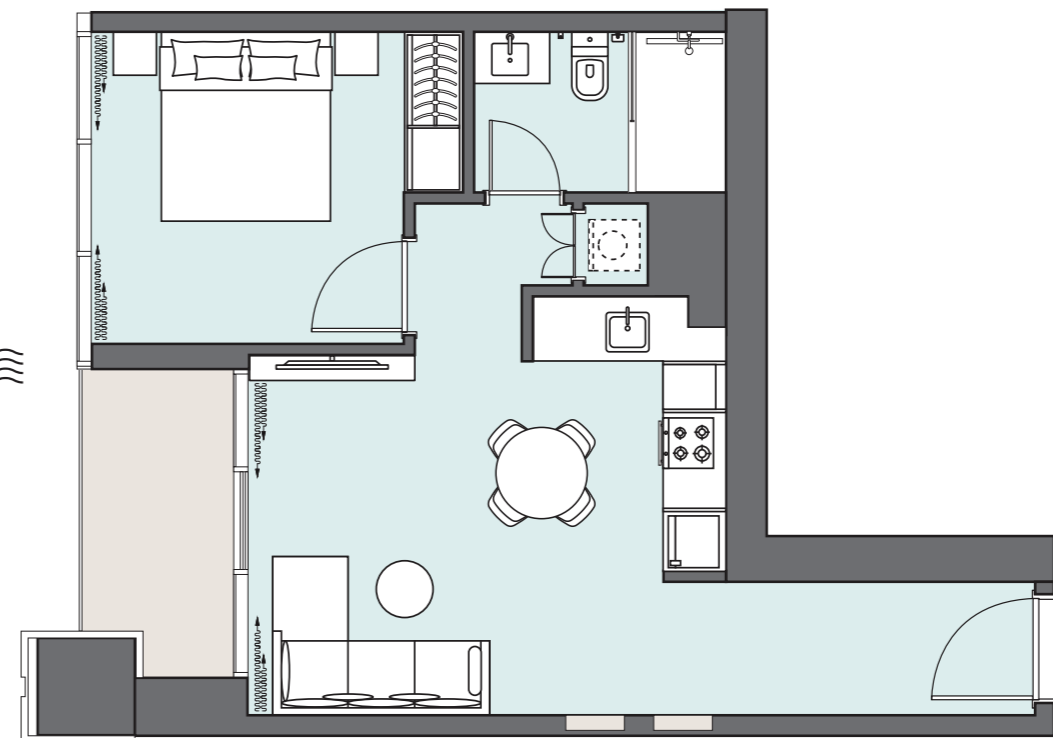
Apartment Area	50.18 m ²	540.13 ft ²
Balcony Area	6.88 m ²	74.06 ft ²
Total Area	57.06 m²	614.19 ft²



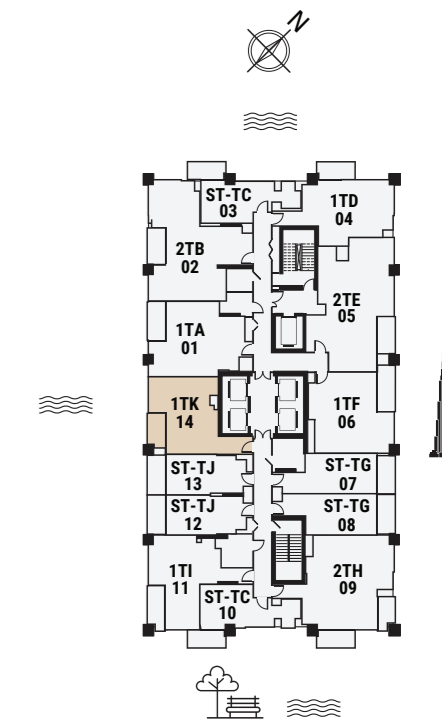
Floors 4-14, 17-35

1 BEDROOM

The Tower | Type TK | Unit 14
 Floors 4-6, 8-11, 13-14, 18-21, 23-26, 28-31 & 33-35



Apartment Area	47.02 m ²	506.12 ft ²
Balcony Area	5.33 m ²	57.37 ft ²
Total Area	52.35 m²	563.49 ft²



Floors 4-14, 17-35

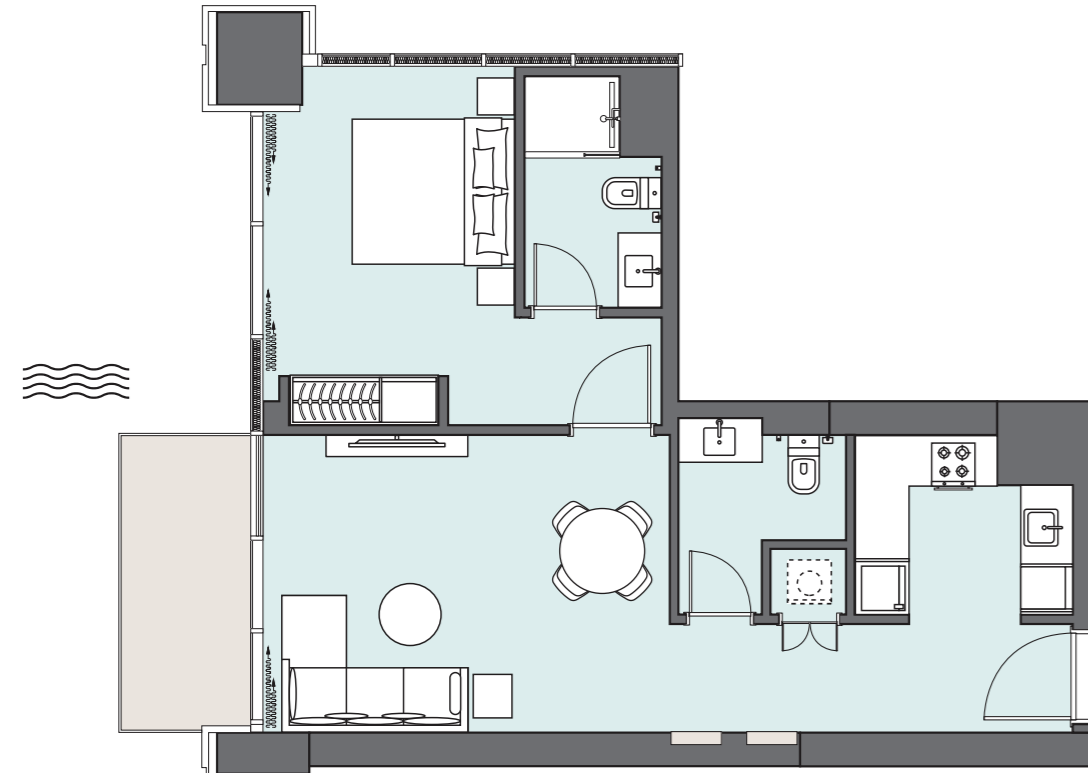
1 BEDROOM

The Tower | Type TL | Unit 301

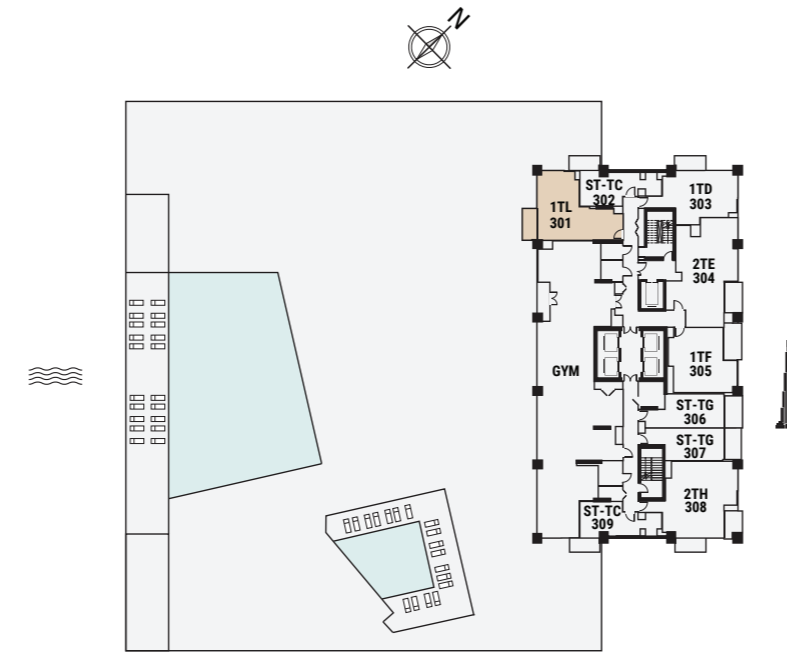


1 BEDROOM

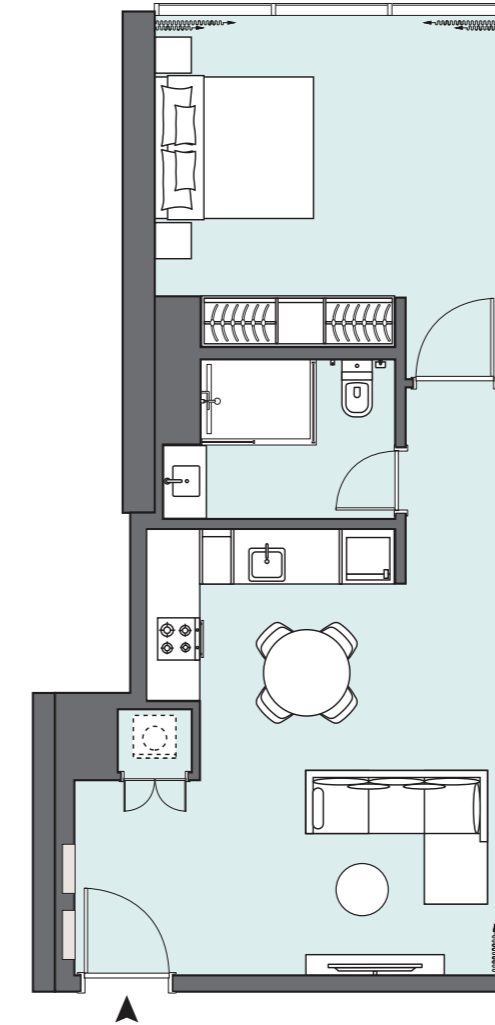
The Tower | Type TM | Unit 201



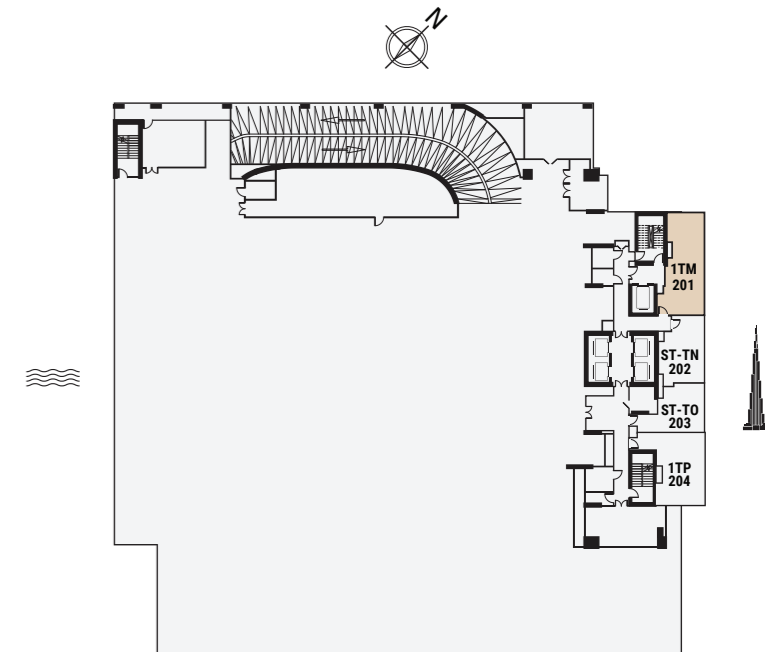
Apartment Area	59.15 m ²	636.69 ft ²
Balcony Area	5.66 m ²	60.92 ft ²
Total Area	64.81 m²	697.61 ft²



Floor 3



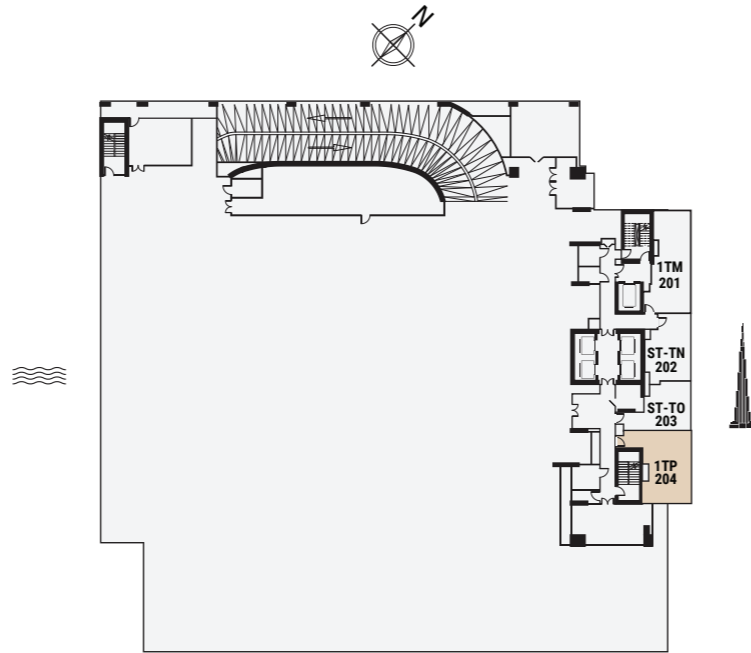
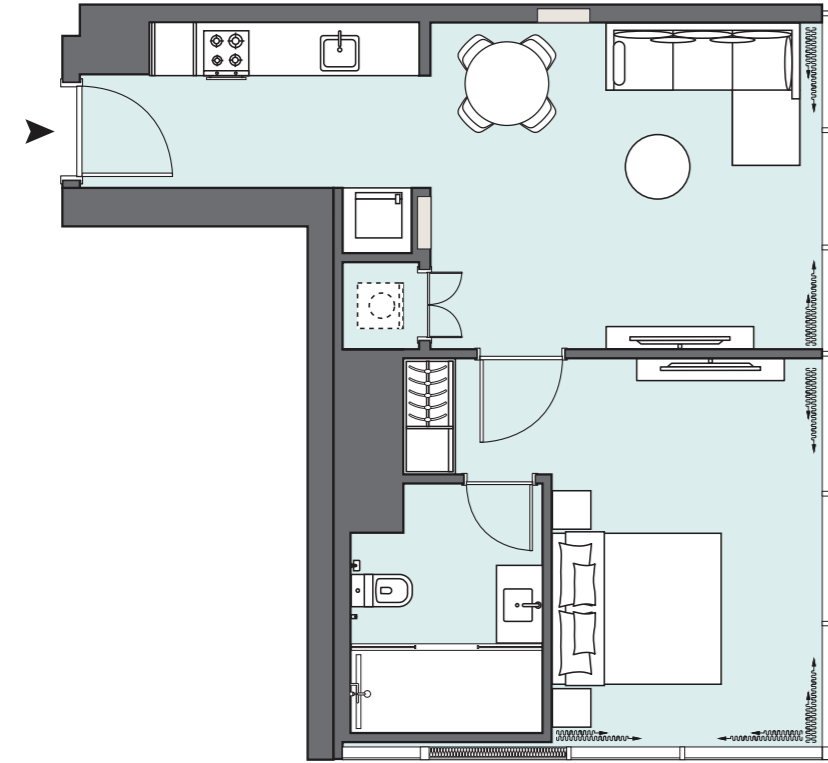
Apartment Area	57.86 m ²	622.80 ft ²
Balcony Area	N/A	N/A
Total Area	57.86 m²	622.80 ft²



Floor 2

1 BEDROOM

The Tower | Type TP | Unit 204

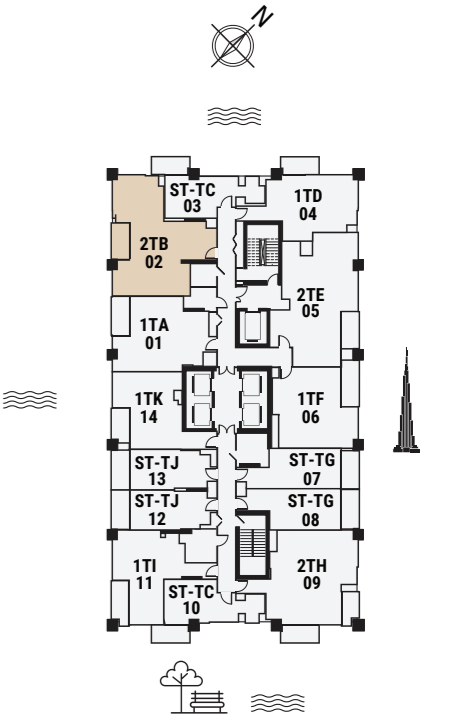
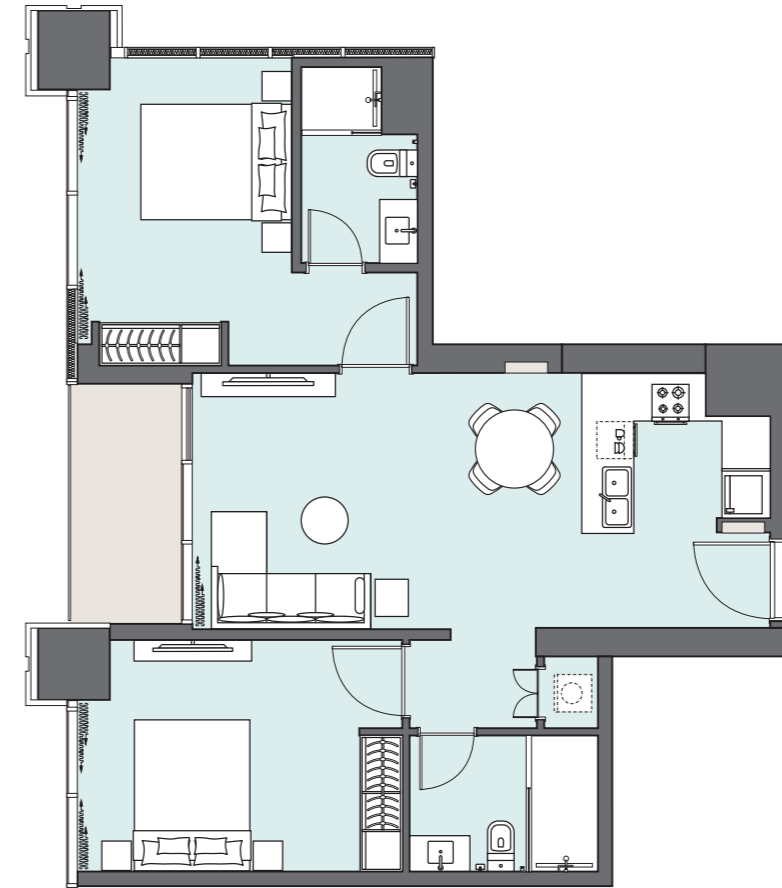


Floor 2

Apartment Area	54.30 m ²	584.48 ft ²
Balcony Area	N/A	N/A
Total Area	54.30 m²	584.48 ft²

2 BEDROOM

The Tower | Type TB | Unit 02
Floors 4-6, 8-11,13-14, 18-21, 23-26, 28-31 & 33-35

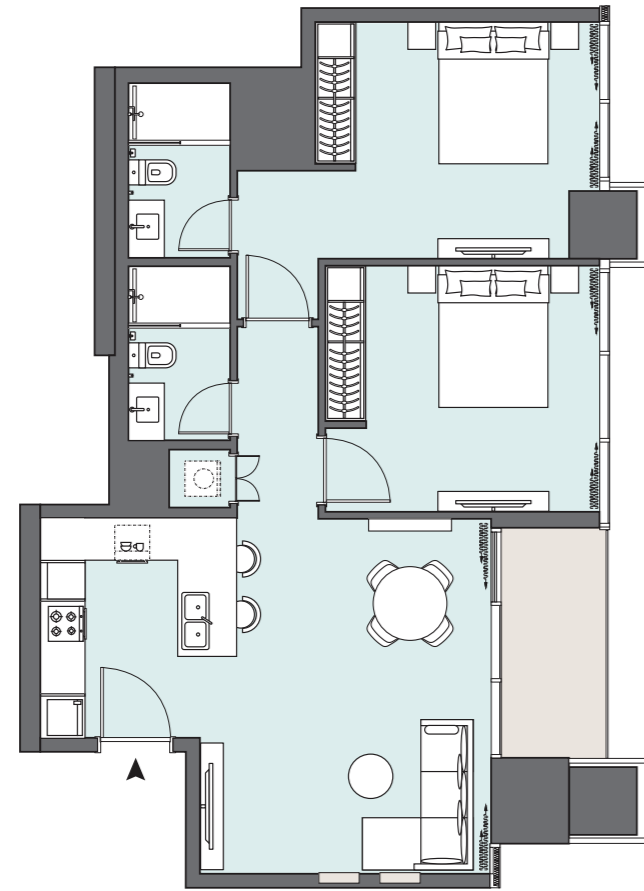


Floors 4-14, 17-35

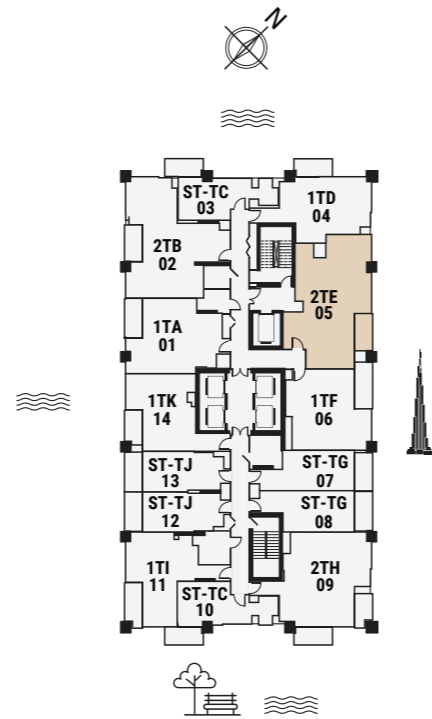
Apartment Area	77.65 m ²	835.82 ft ²
Balcony Area	5.74 m ²	61.78 ft ²
Total Area	83.39 m²	897.60 ft²

2 BEDROOM

The Tower | Type TE | Unit 05
 Floors 4-6, 8-11,13-14, 18-21, 23-26, 28-31 & 33-35



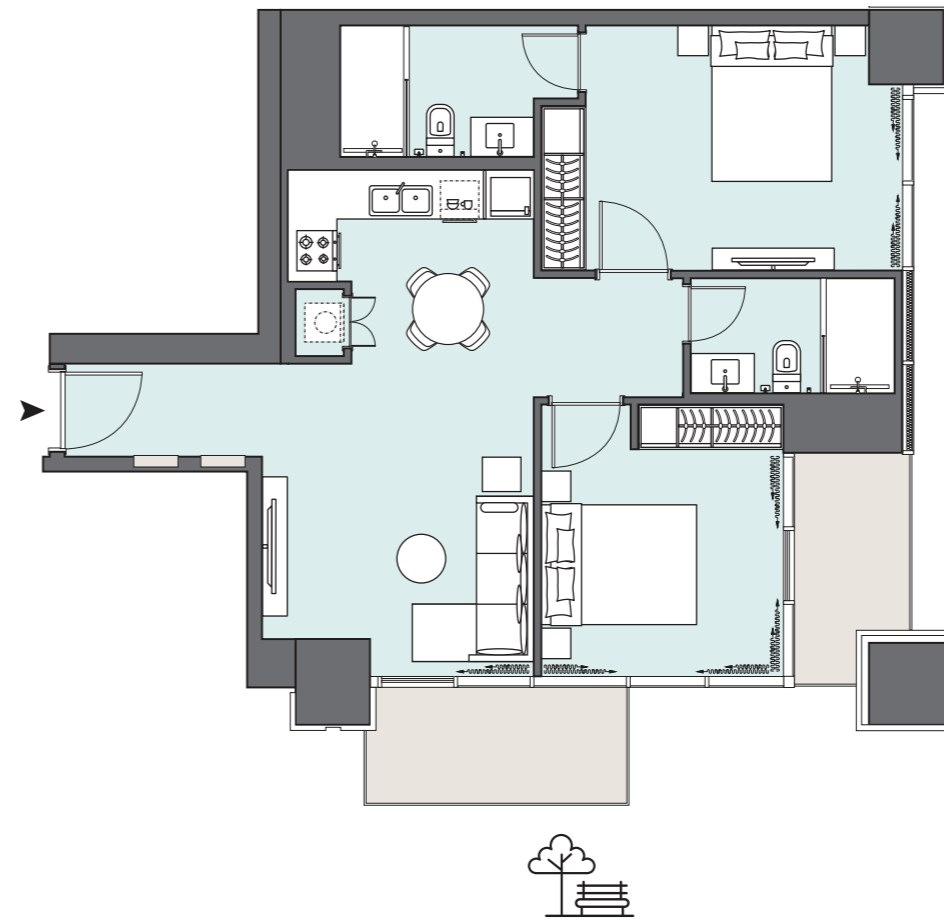
Apartment Area	82.24 m ²	885.22 ft ²
Balcony Area	5.80 m ²	62.43 ft ²
Total Area	88.04 m²	947.65 ft²



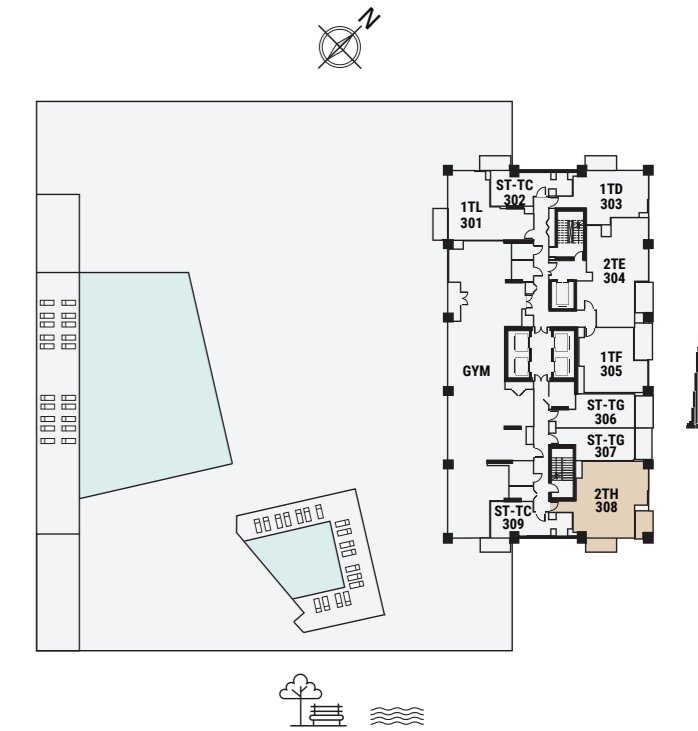
Floors 4-14, 17-35

2 BEDROOM

The Tower | Type TH | Unit 308




Apartment Area	74.01 m ²	796.64 ft ²
Balcony Area	11.67 m ²	125.61 ft ²
Total Area	85.68 m²	922.25 ft²



Floor 3




PENINSULA
—
ONE



Phone: +971 4 368 3355
Toll Free: 800-100-001
www.select-group.ae