

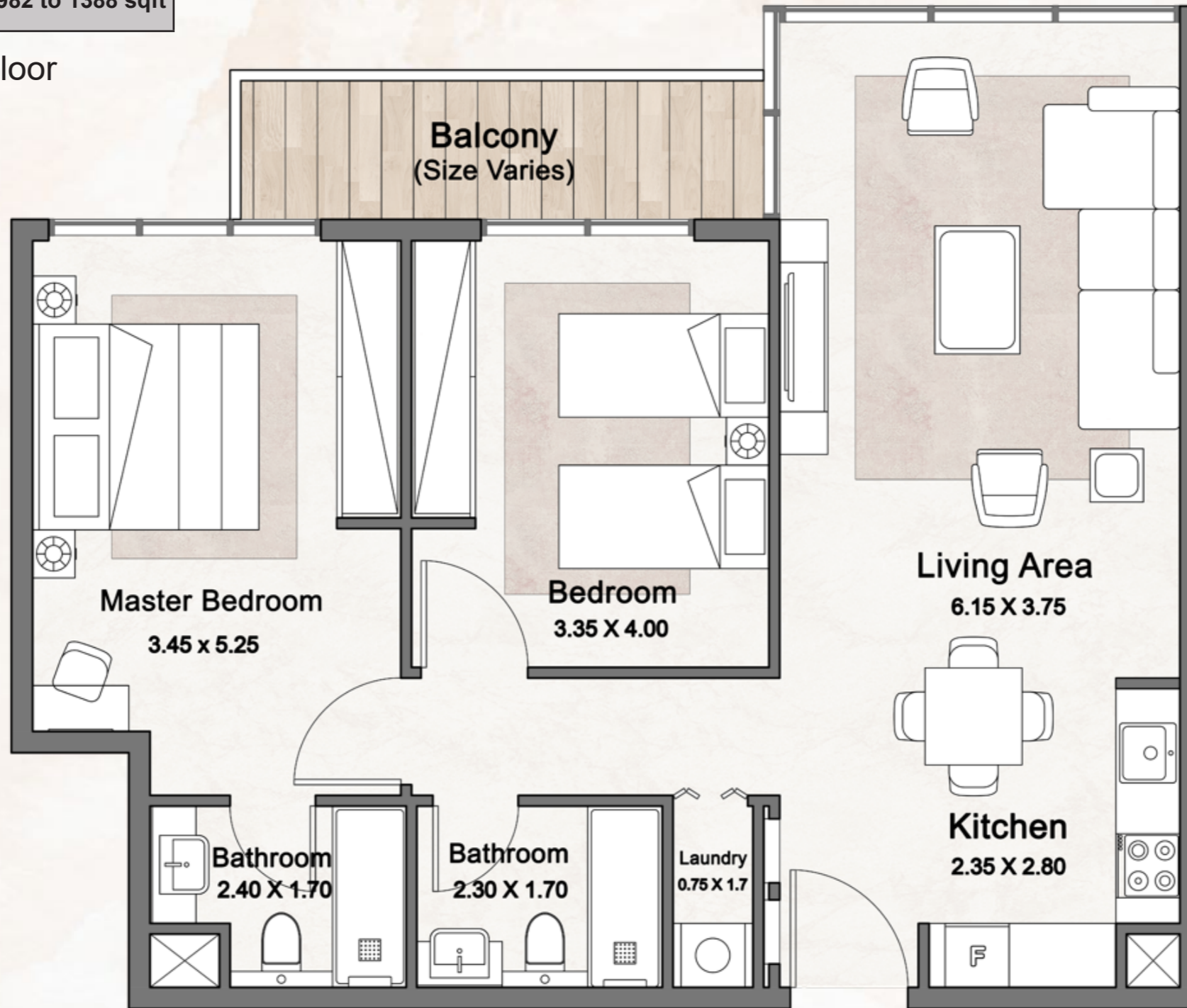


UNIT TYPES

VILLE 11

Internal Area	894 to 959 sqft
Outdoor Area	78 to 429 sqft
Total Area	982 to 1388 sqft

From 1st to 5th Floor



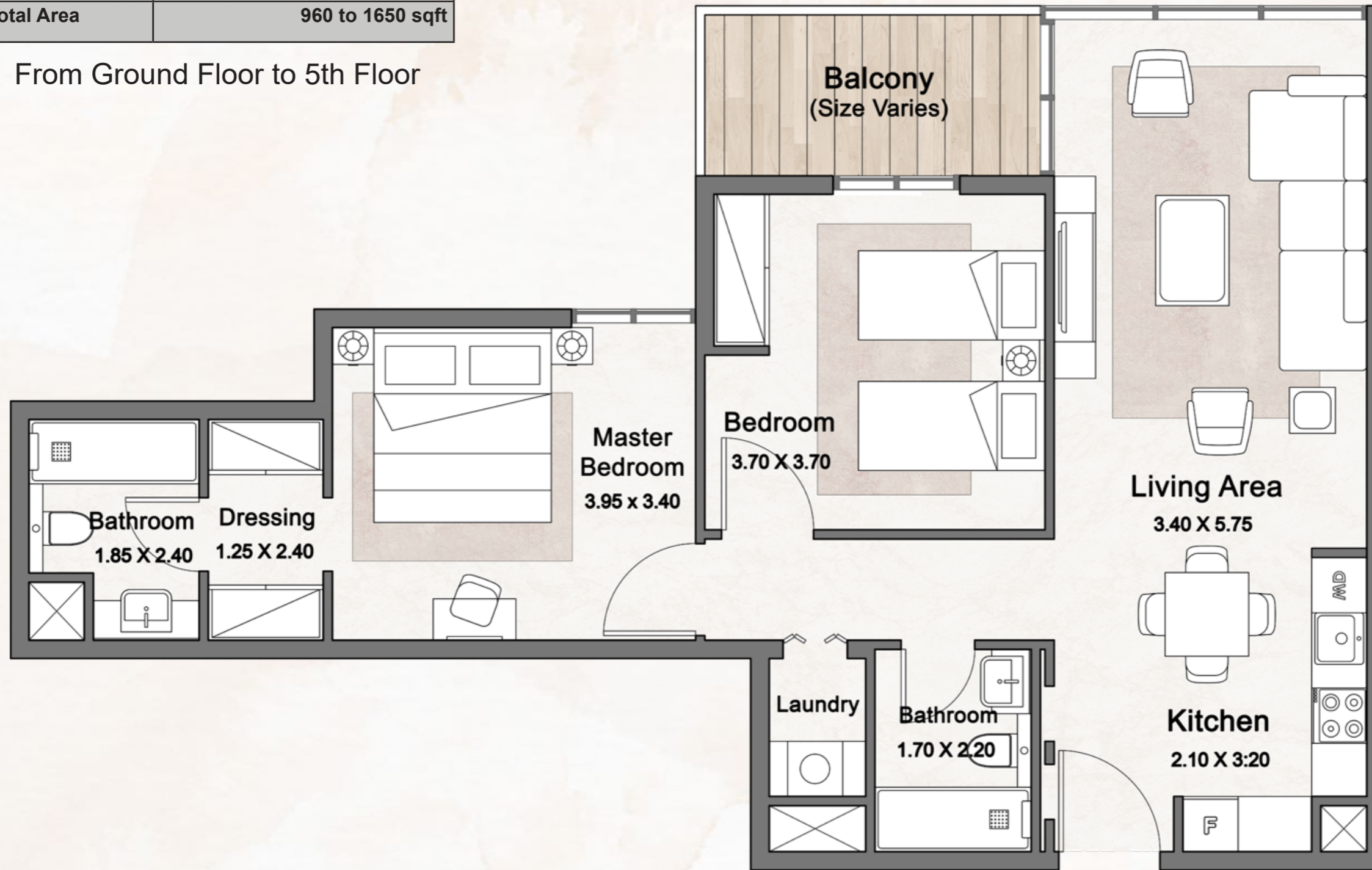
L+2 BEDROOMS - TYPE A

VILLE 11



Internal Area	884 sqft
Outdoor Area	76 to 766 sqft
Total Area	960 to 1650 sqft

From Ground Floor to 5th Floor



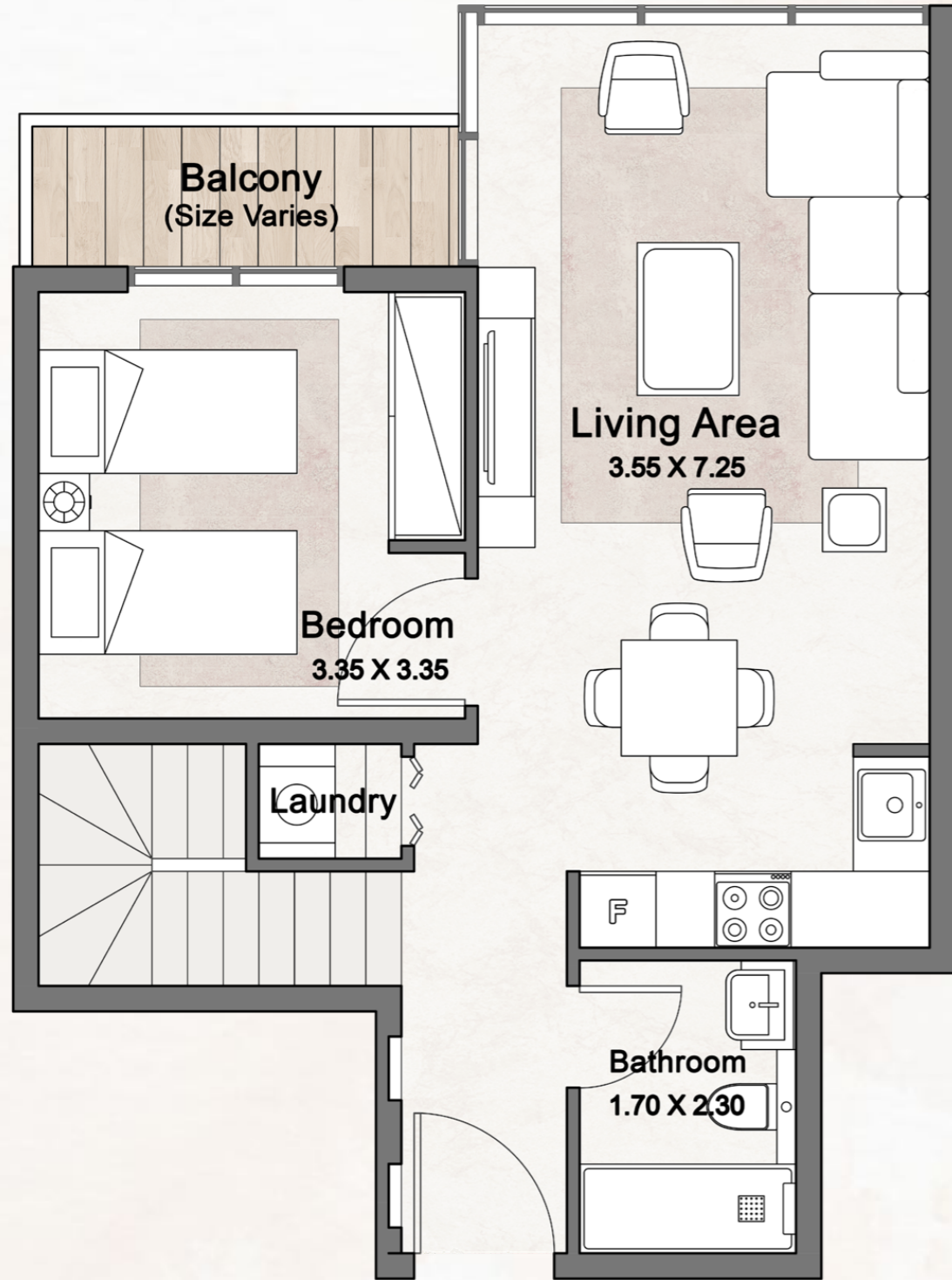
L+2 BEDROOMS - TYPE B

VILLE 11

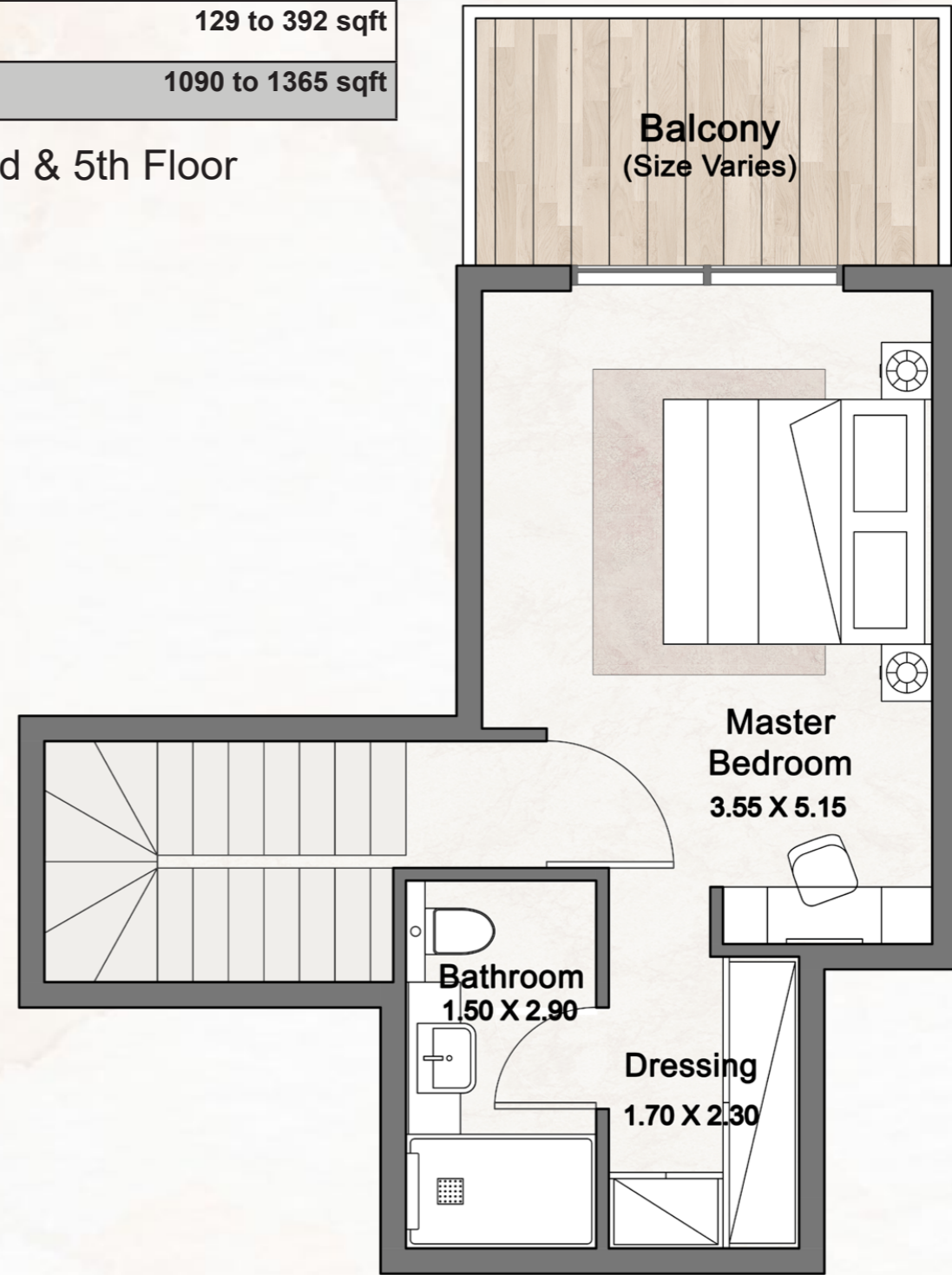


Internal Area	961 to 973 sqft
Outdoor Area	129 to 392 sqft
Total Area	1090 to 1365 sqft

1st, 3rd & 5th Floor



Ground Floor



Upper Floor

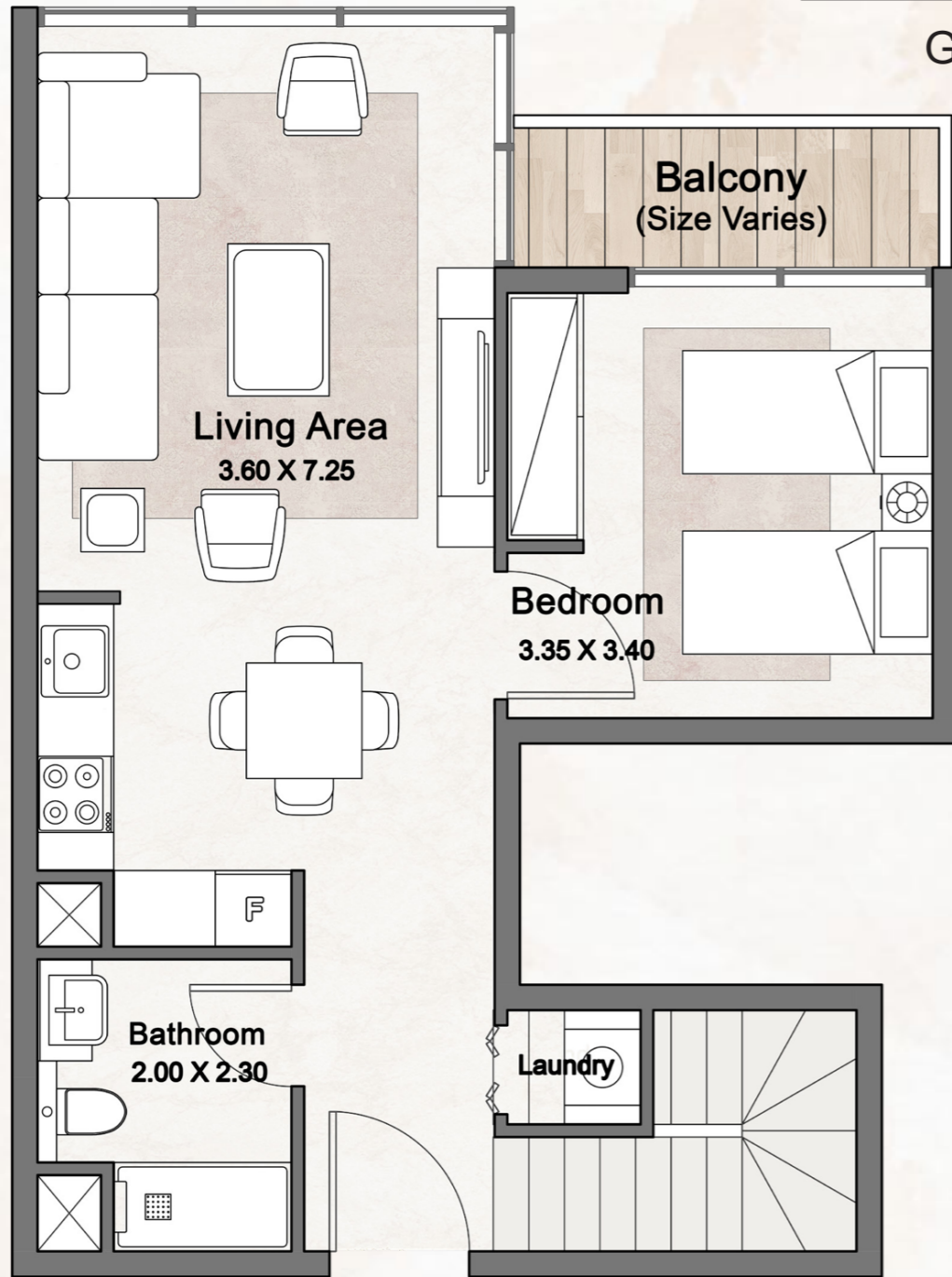
L+2 BEDROOMS - TYPE C (DUPLEX)

VILLE 11 |

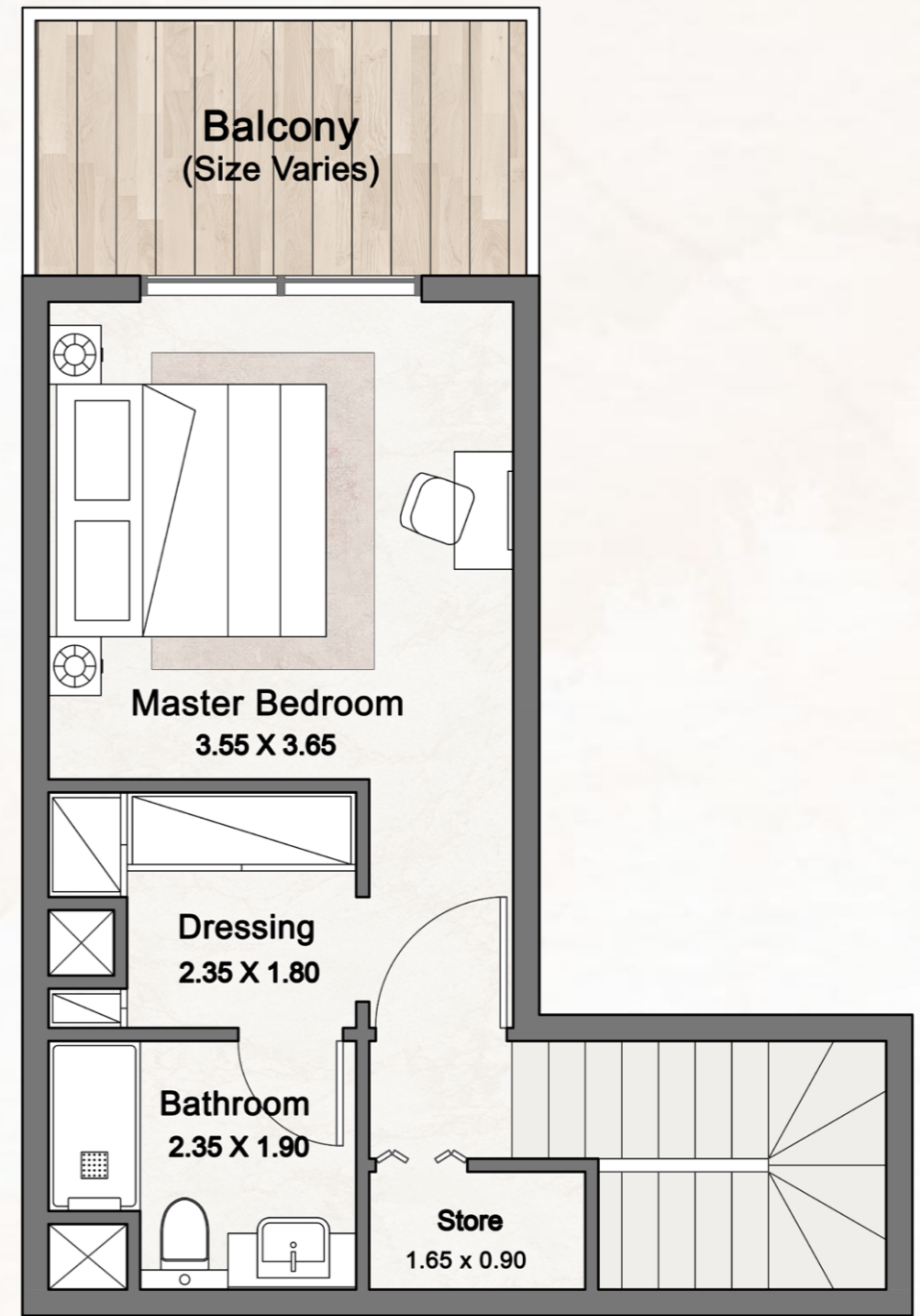


Internal Area	903 to 973 sqft
Outdoor Area	130 to 581 sqft
Total Area	1033 to 1536 sqft

Ground, 2nd & 4th Floor



Ground Floor

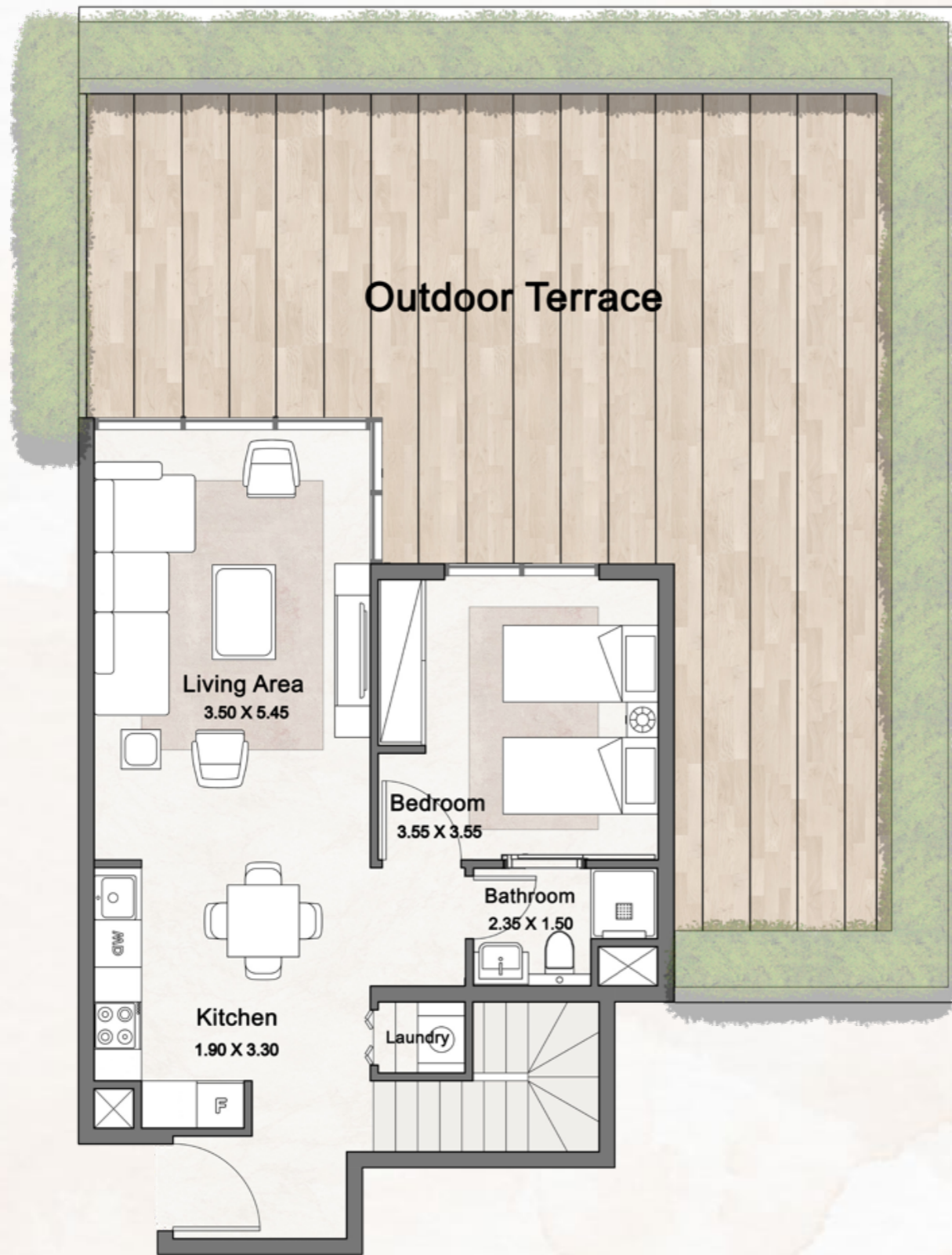


Upper Floor

L+2 BEDROOMS - TYPE D (DUPLEX)

VILLE 11

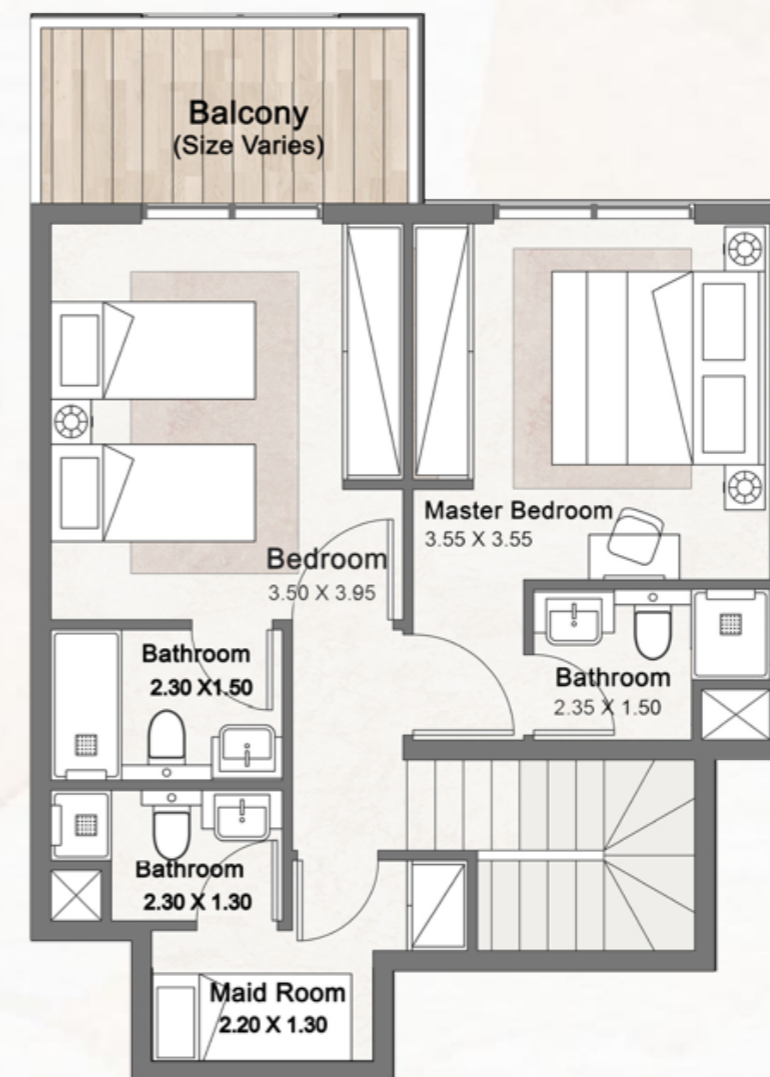




Ground Floor

Internal Area	1125 sqft
Outdoor Area	1293 sqft
Total Area	2419 sqft

Ground Floor



Upper Floor

L+2 BEDROOMS - TYPE E (DUPLEX)

VILLE 11



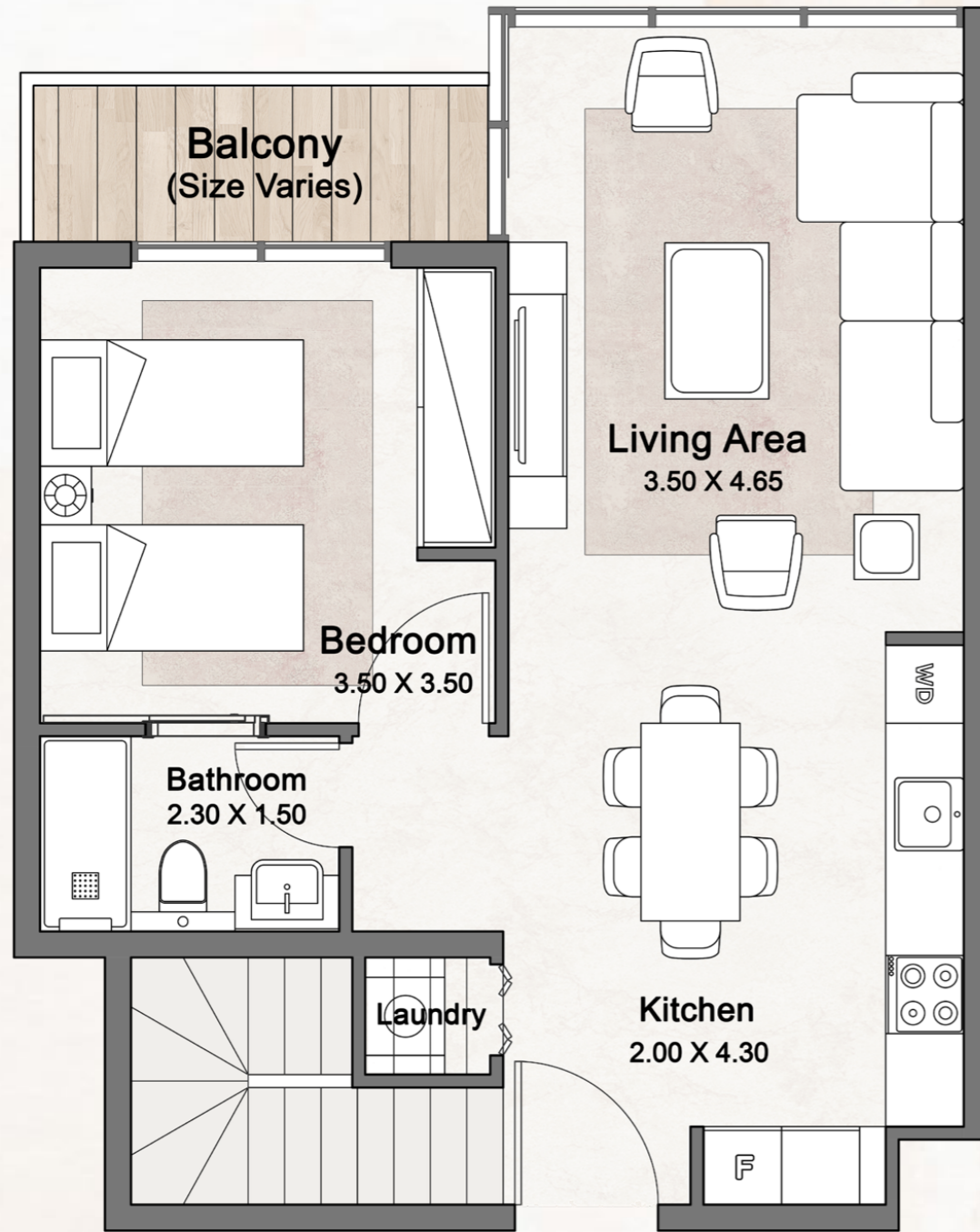


Internal Area	1225 sqft
Outdoor Area	556 sqft
Total Area	1782 sqft

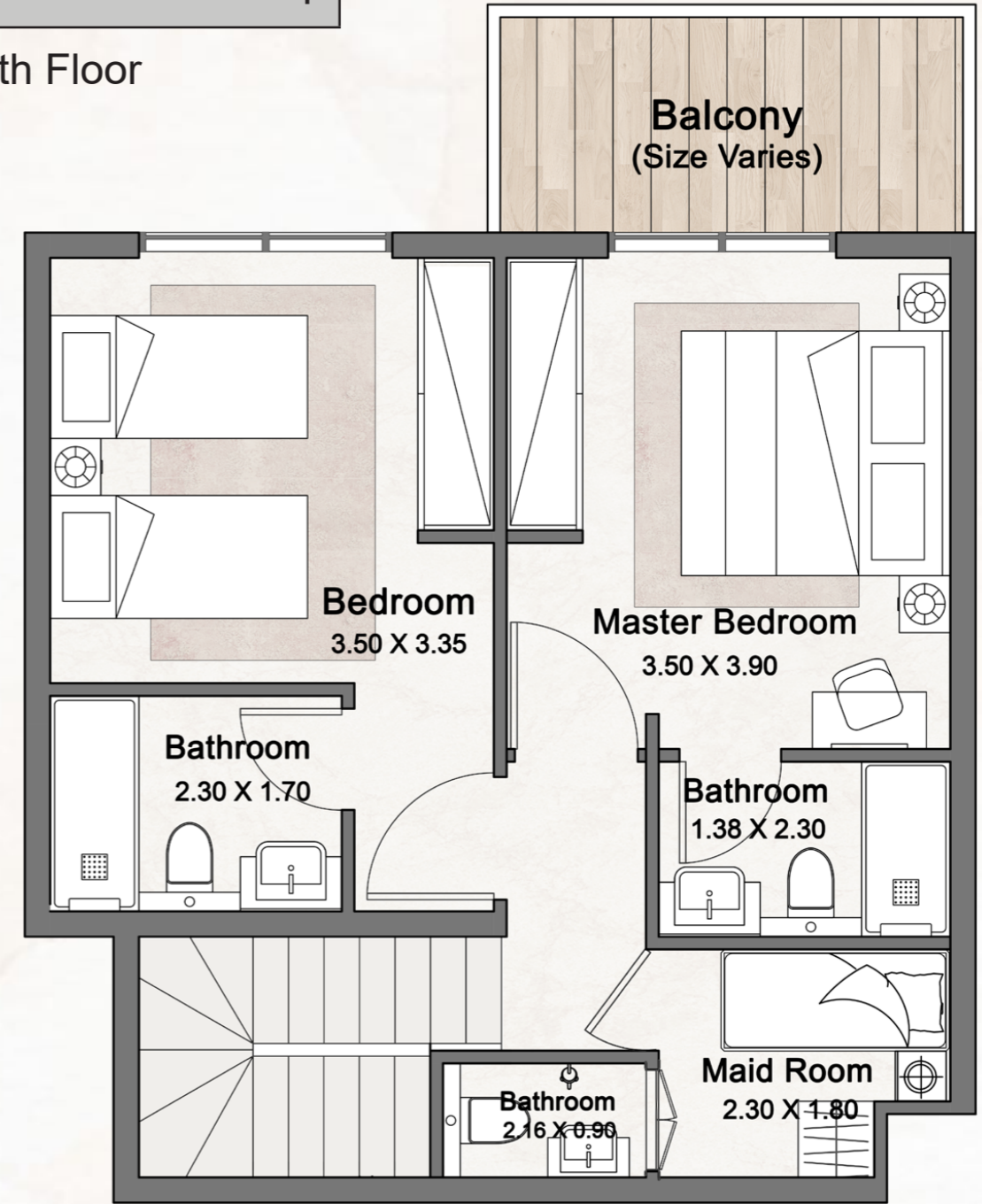
Ground Floor

Internal Area	1196 sqft
Outdoor Area	125 sqft
Total Area	1321 sqft

2nd & 4th Floor



Ground Floor

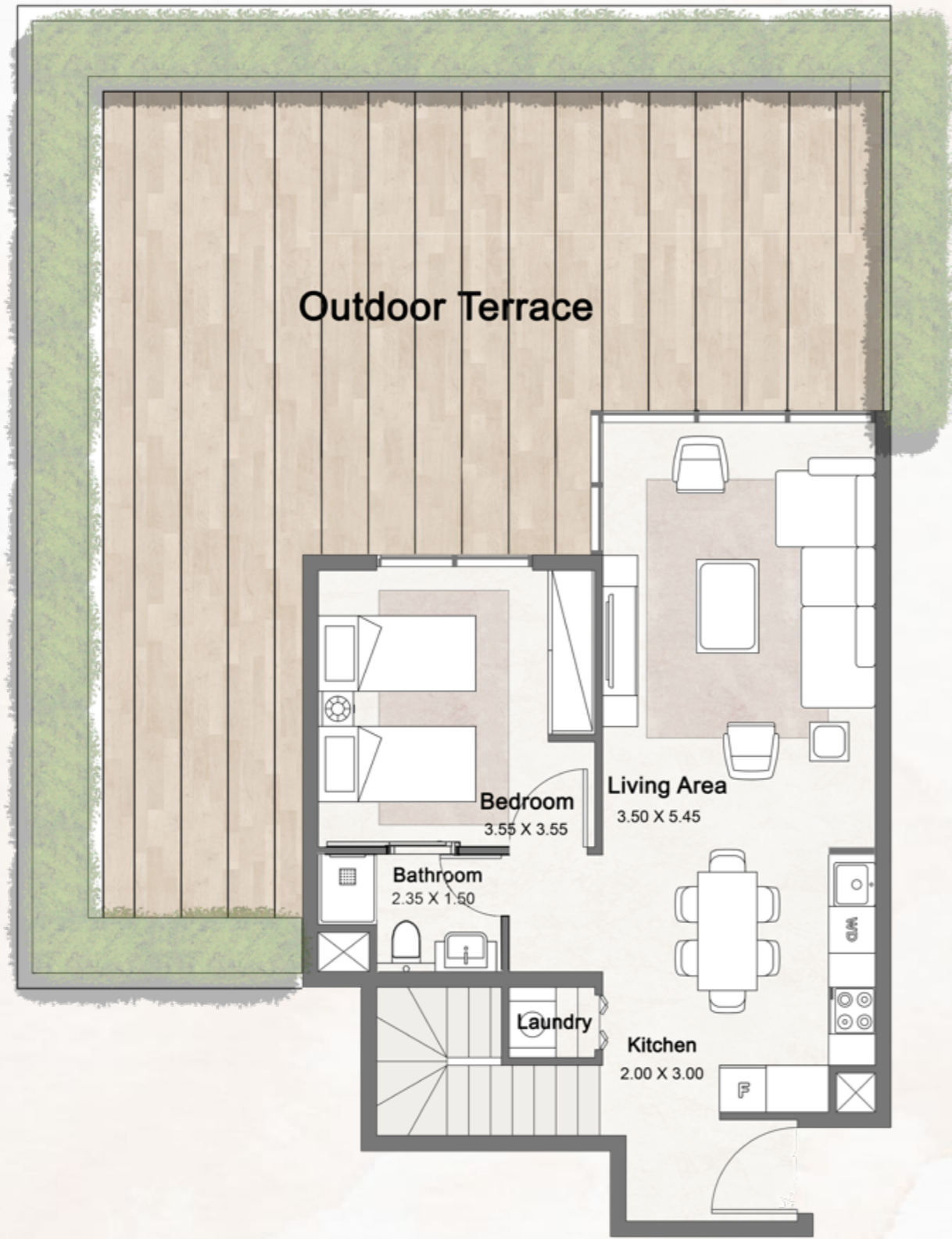


Upper Floor

L+3 BEDROOMS - TYPE A (DUPLEX)

VILLE 11 |

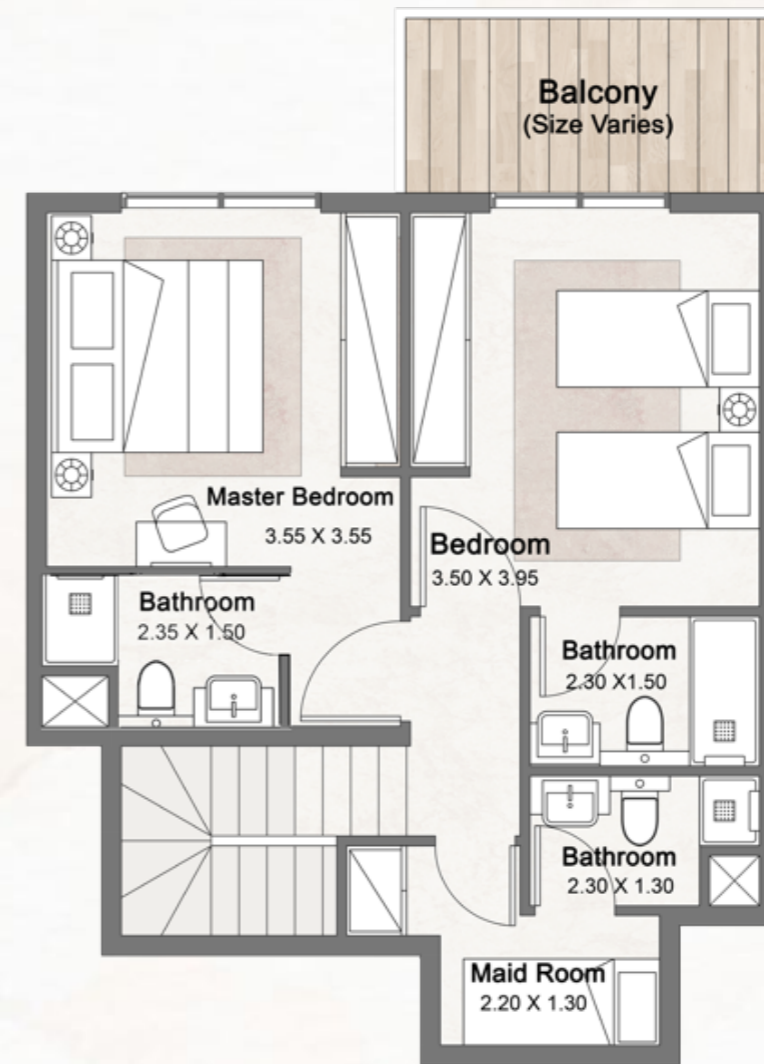




Ground Floor

Internal Area	1258 sqft
Outdoor Area	1041 sqft
Total Area	2299 sqft

Ground Floor

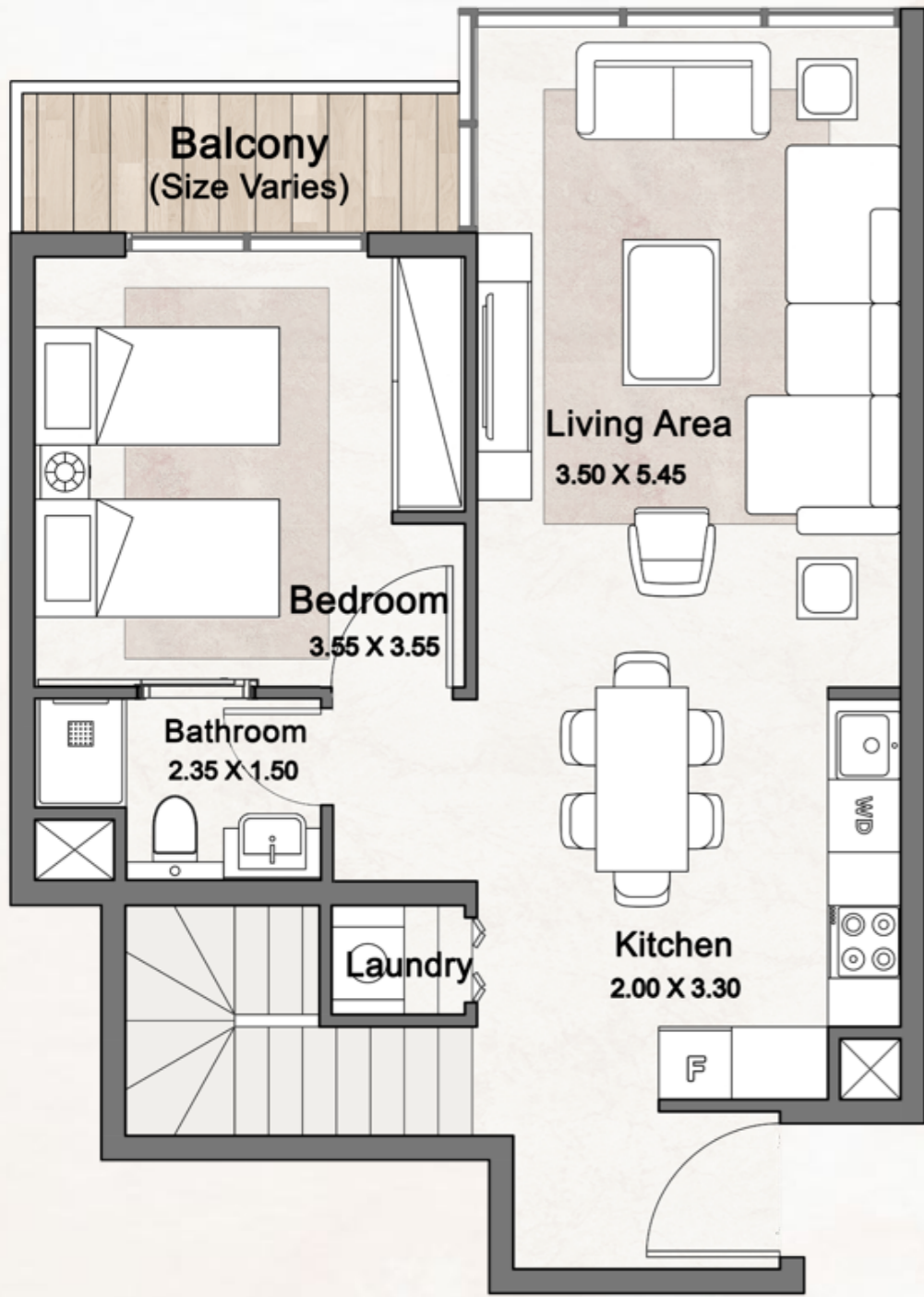


Upper Floor

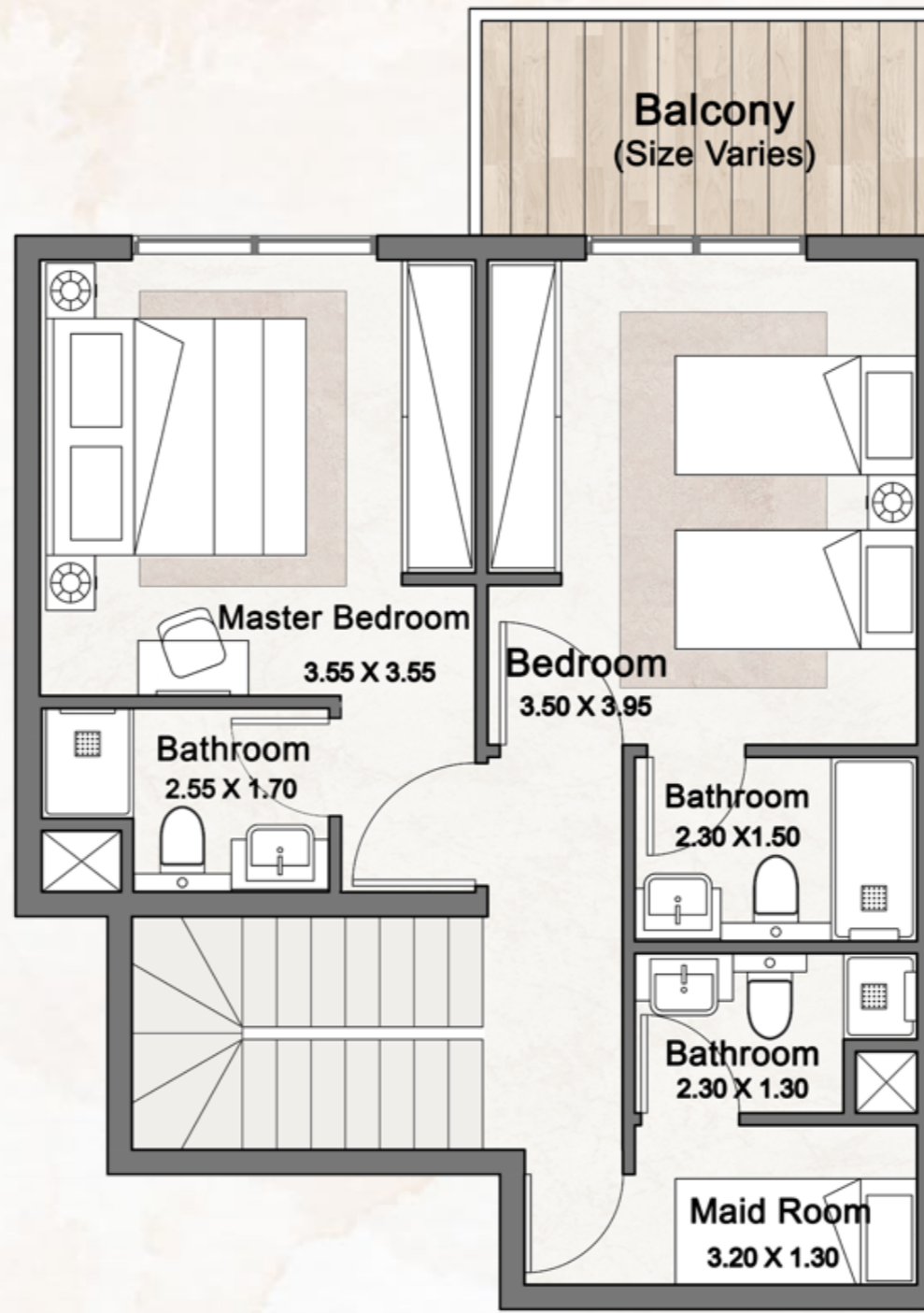
L+3 BEDROOMS - TYPE B (DUPLEX)

VILLE 11





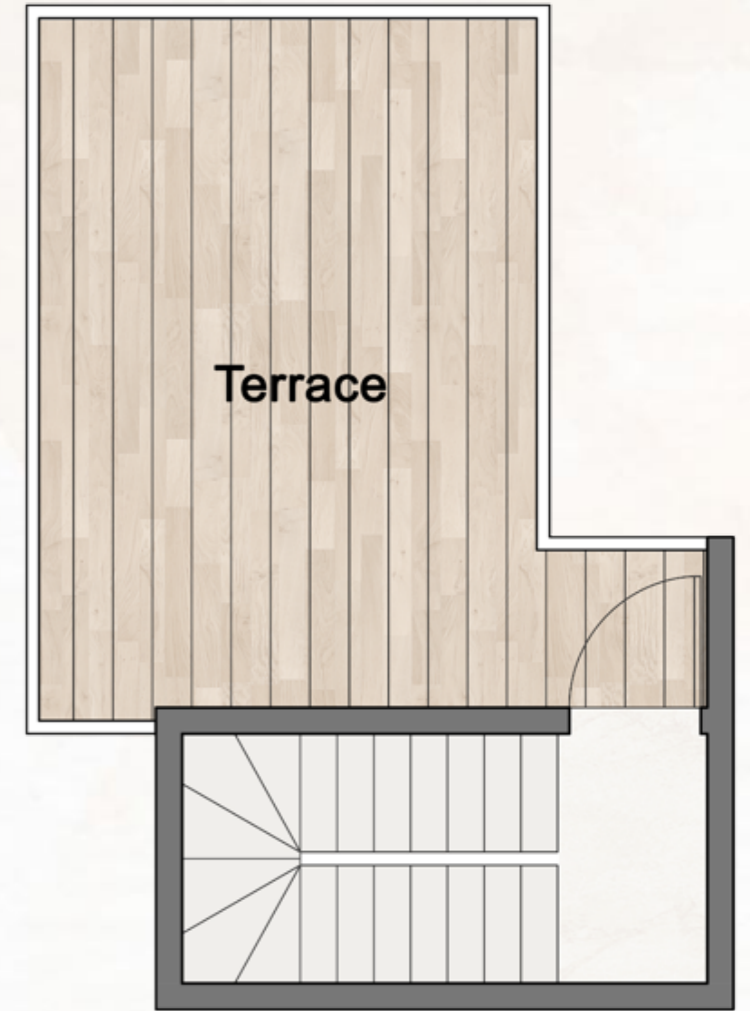
Ground Floor



Upper Floor

Internal Area	1368 sqft
Outdoor Area	345 sqft
Total Area	1713 sqft

2nd Floor



Roof Terrace

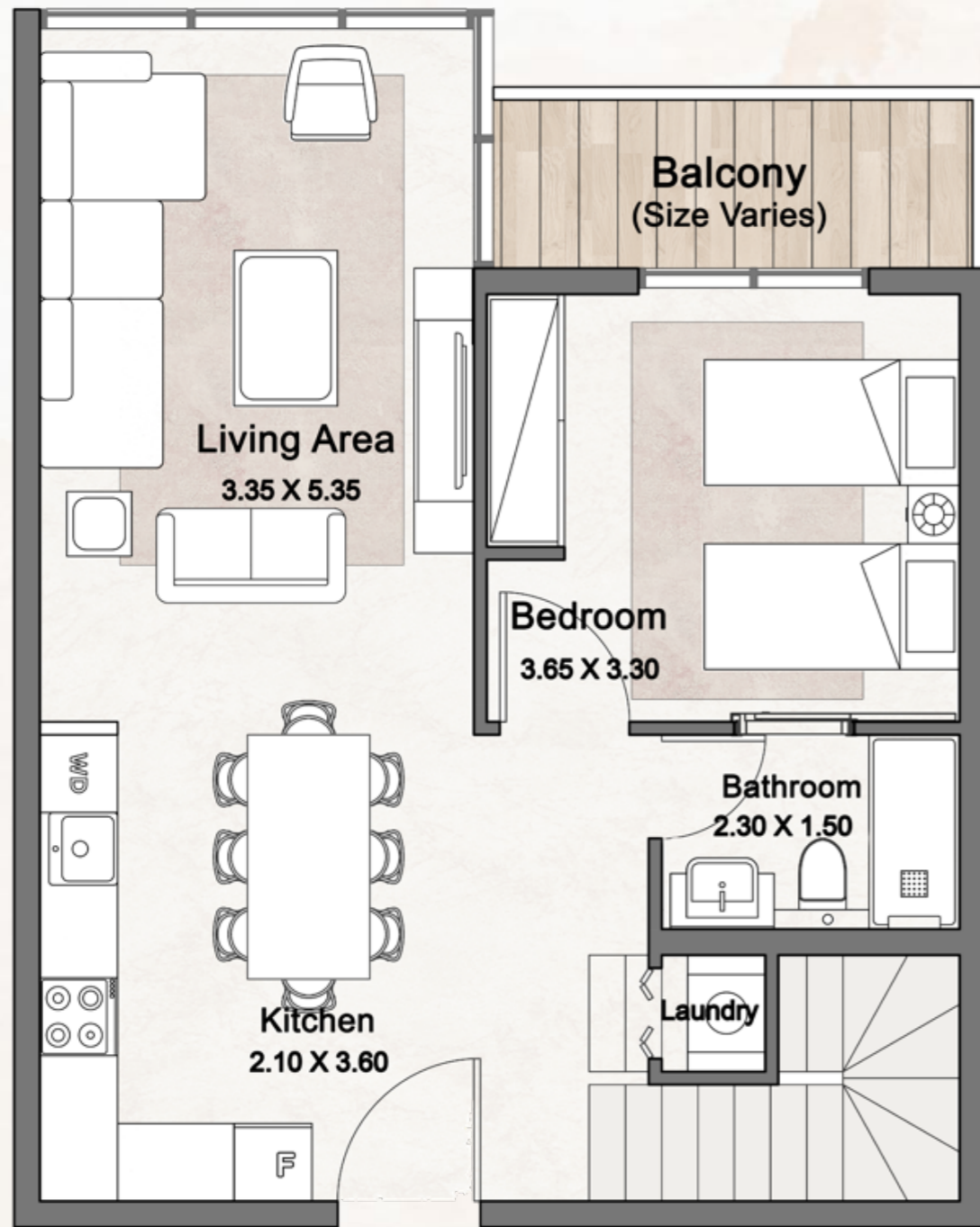
L+3 BEDROOMS - TYPE C (TRIPLEX)

VILLE 11

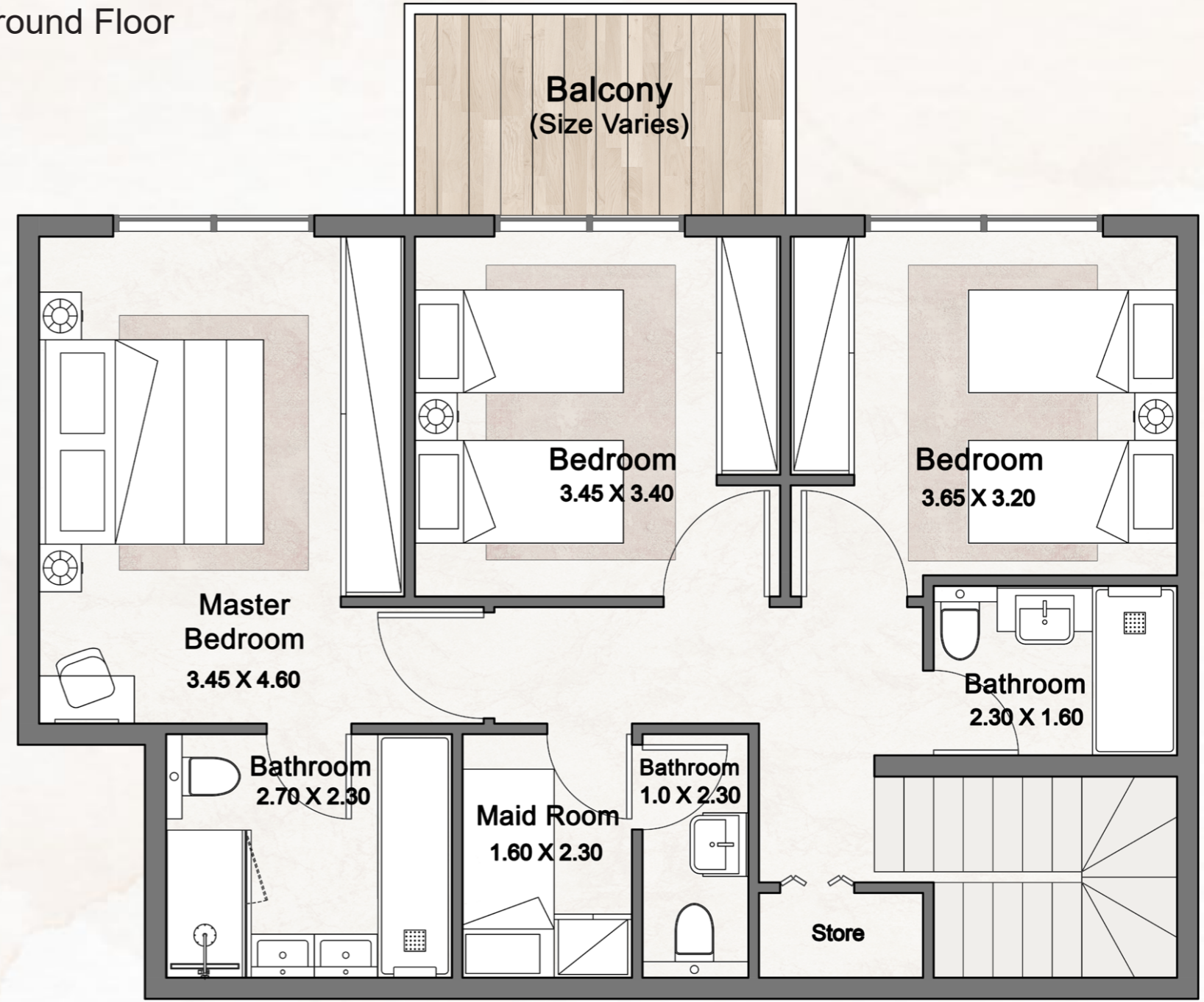


Internal Area	1460 to 1473 sqft
Outdoor Area	353 to 445 sqft
Total Area	1812 to 1909 sqft

Ground Floor



Ground Floor



Upper Floor

L+4 BEDROOMS - TYPE A

VILLE 11

