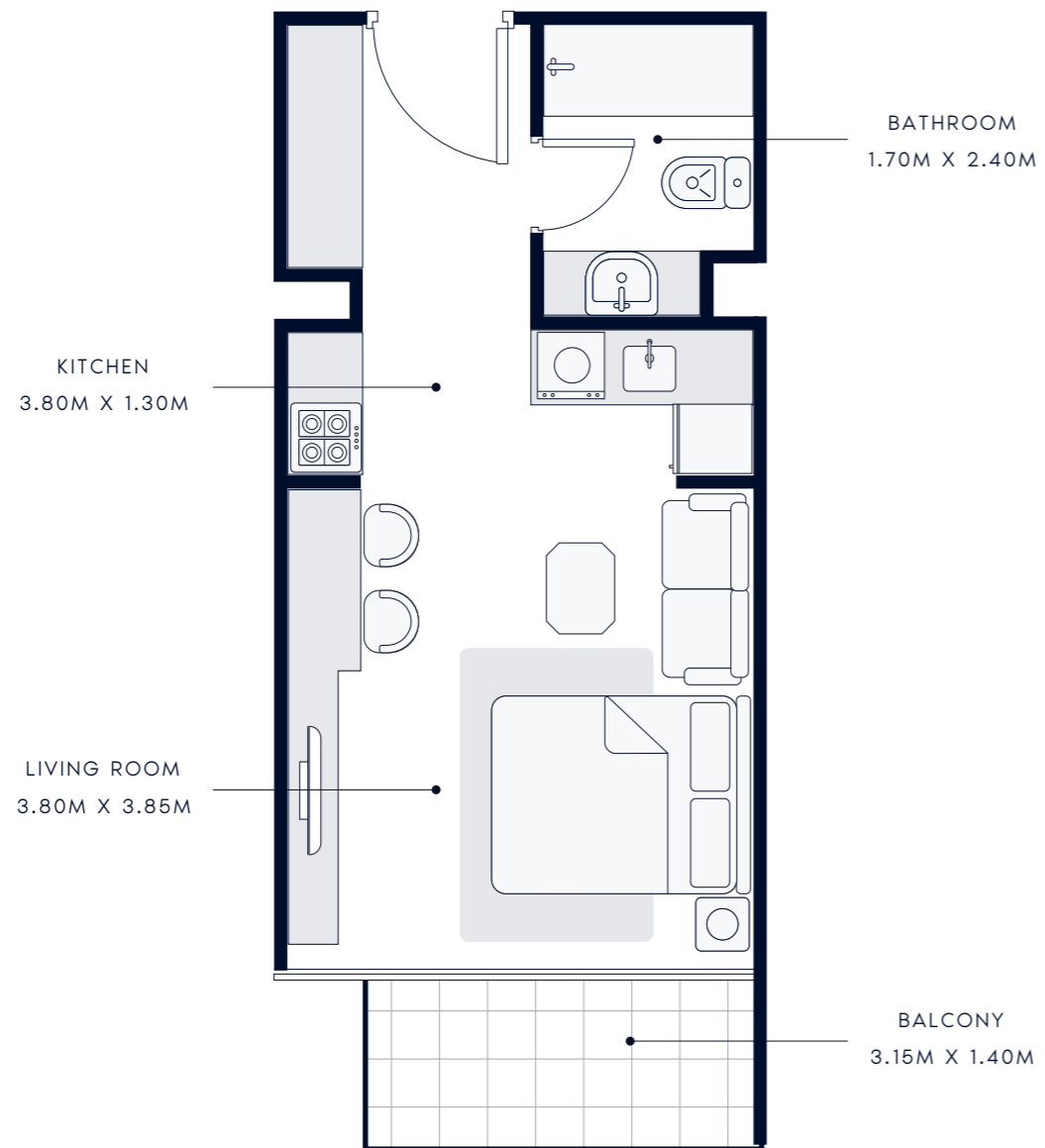




AZIZI STAR

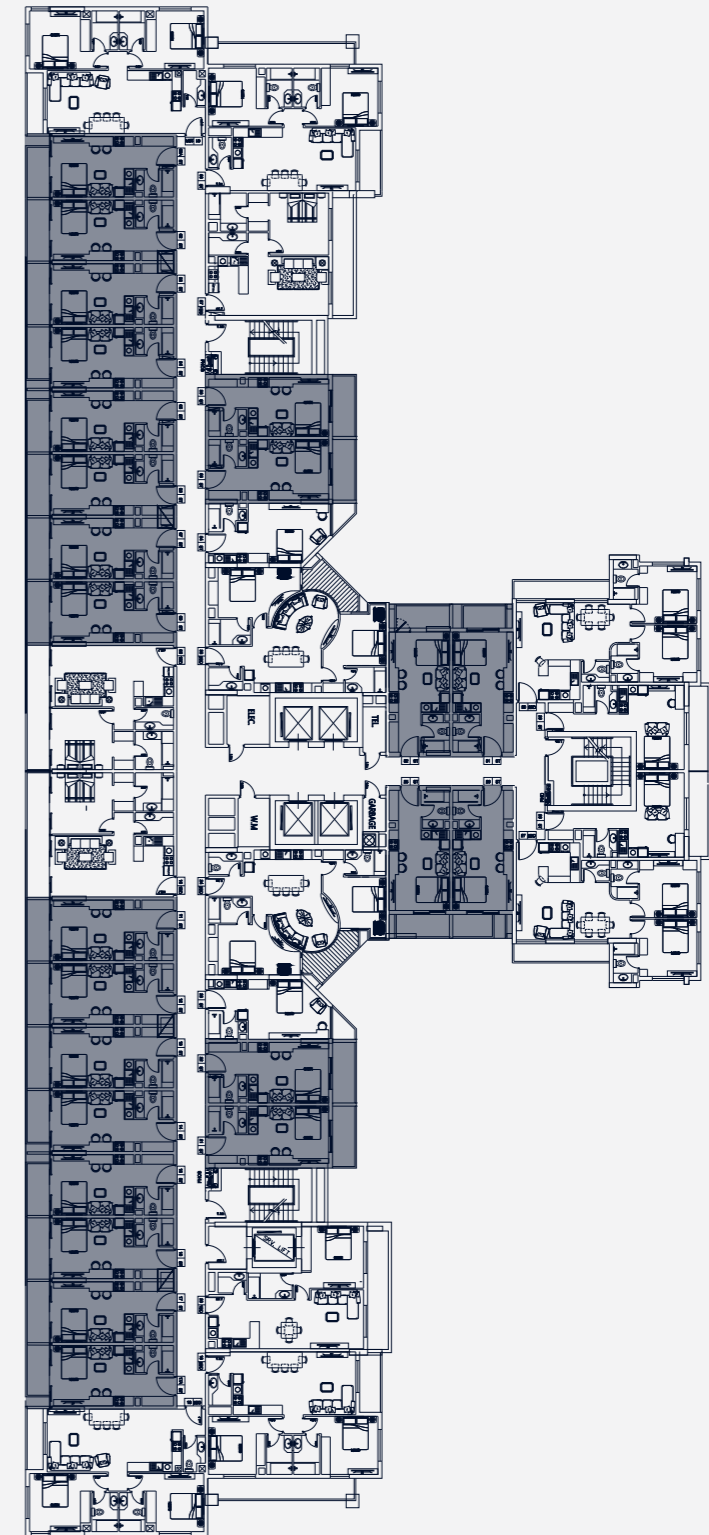
TYPICAL FLOOR PLANS

**STUDIO** TYPE 1  
1st to 12th Floor



SUIT AREA: 333.04 SQ.FT | TOTAL AREA: 390.08 SQ.FT

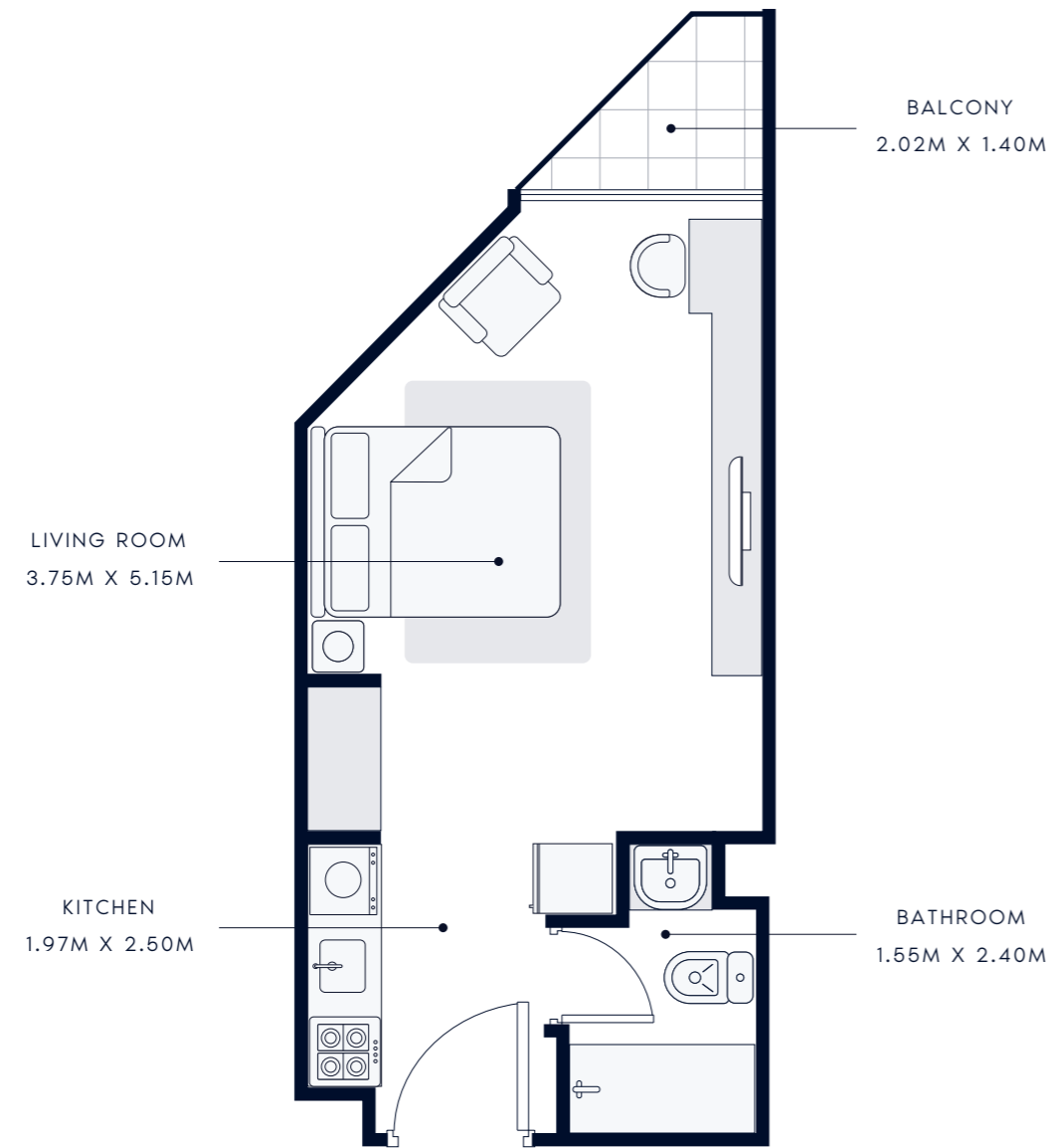
TYPICAL UNITS



FLOOR PLATE

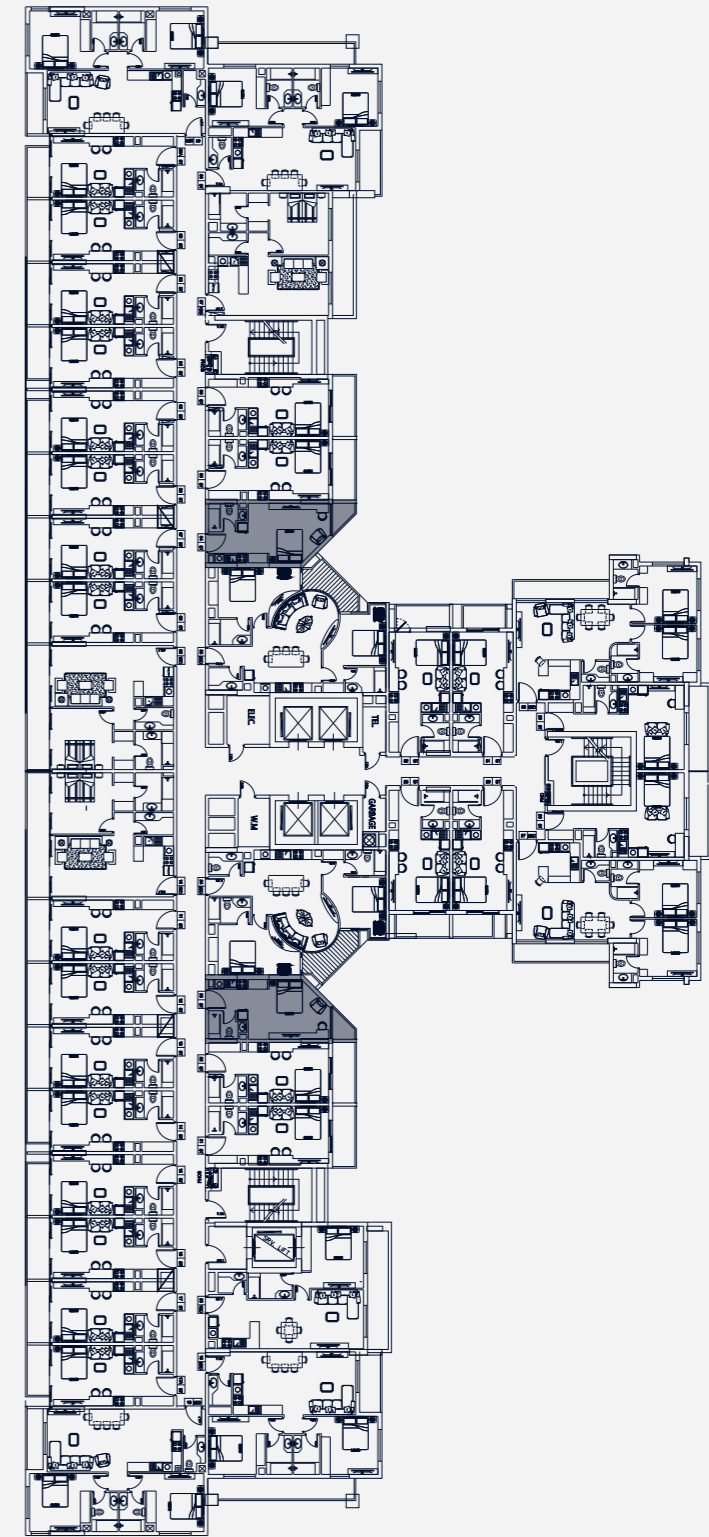


**STUDIO** TYPE 2  
1st to 12th Floor



SUIT AREA: 313.44 SQ.FT | TOTAL AREA: 336.91 SQ.FT

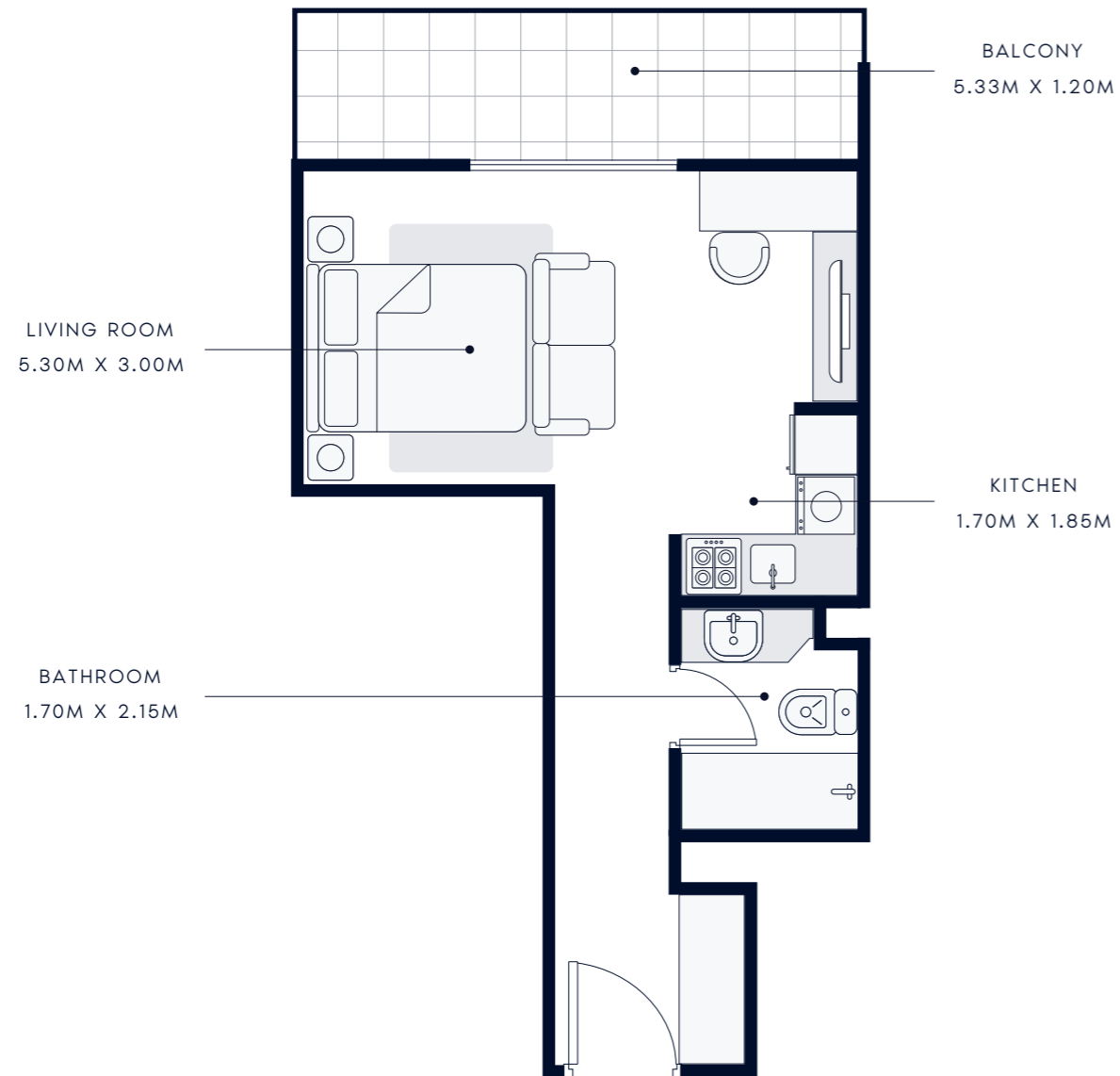
TYPICAL UNITS



FLOOR PLATE

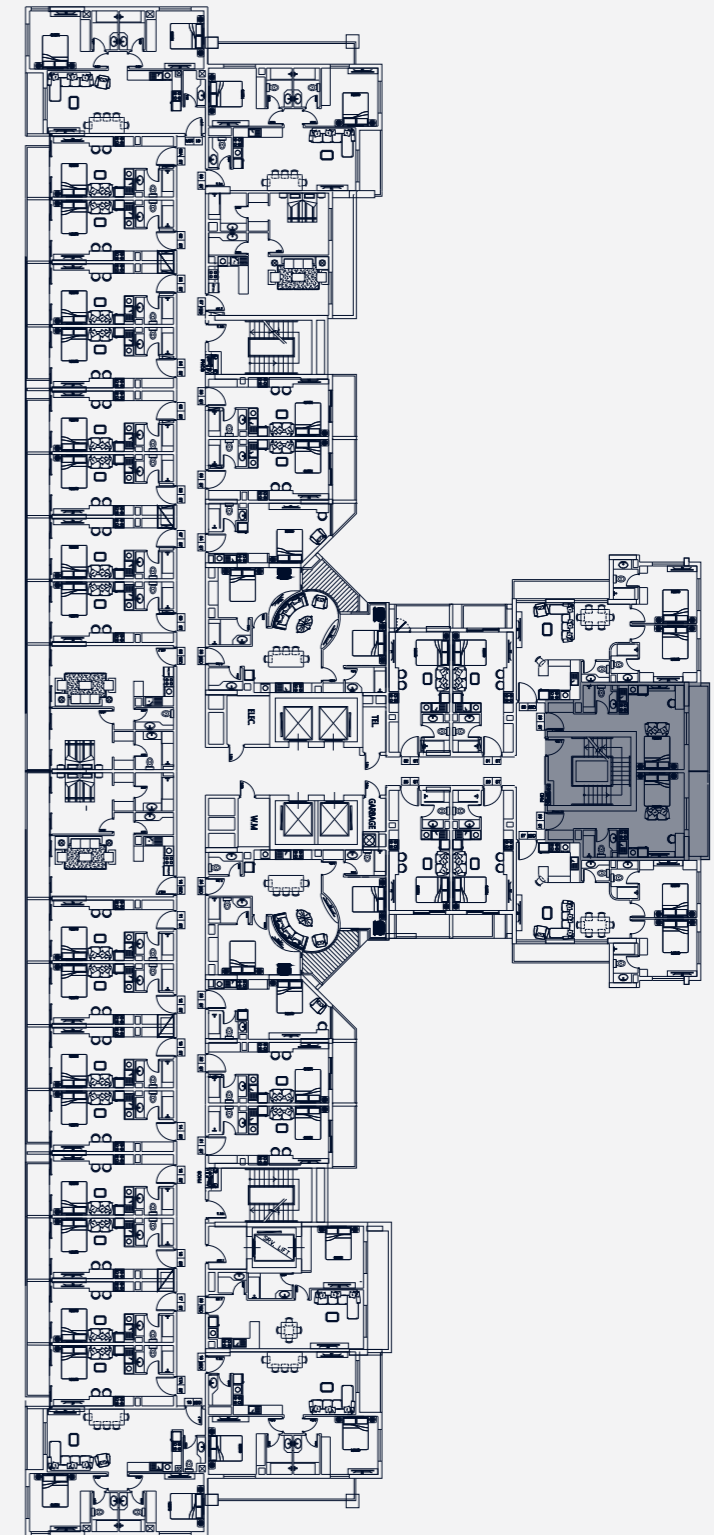


**STUDIO** TYPE 3  
2nd to 12th Floor



SUIT AREA: 359.08 SQ.FT | TOTAL AREA: 428.08 SQ.FT

TYPICAL UNITS

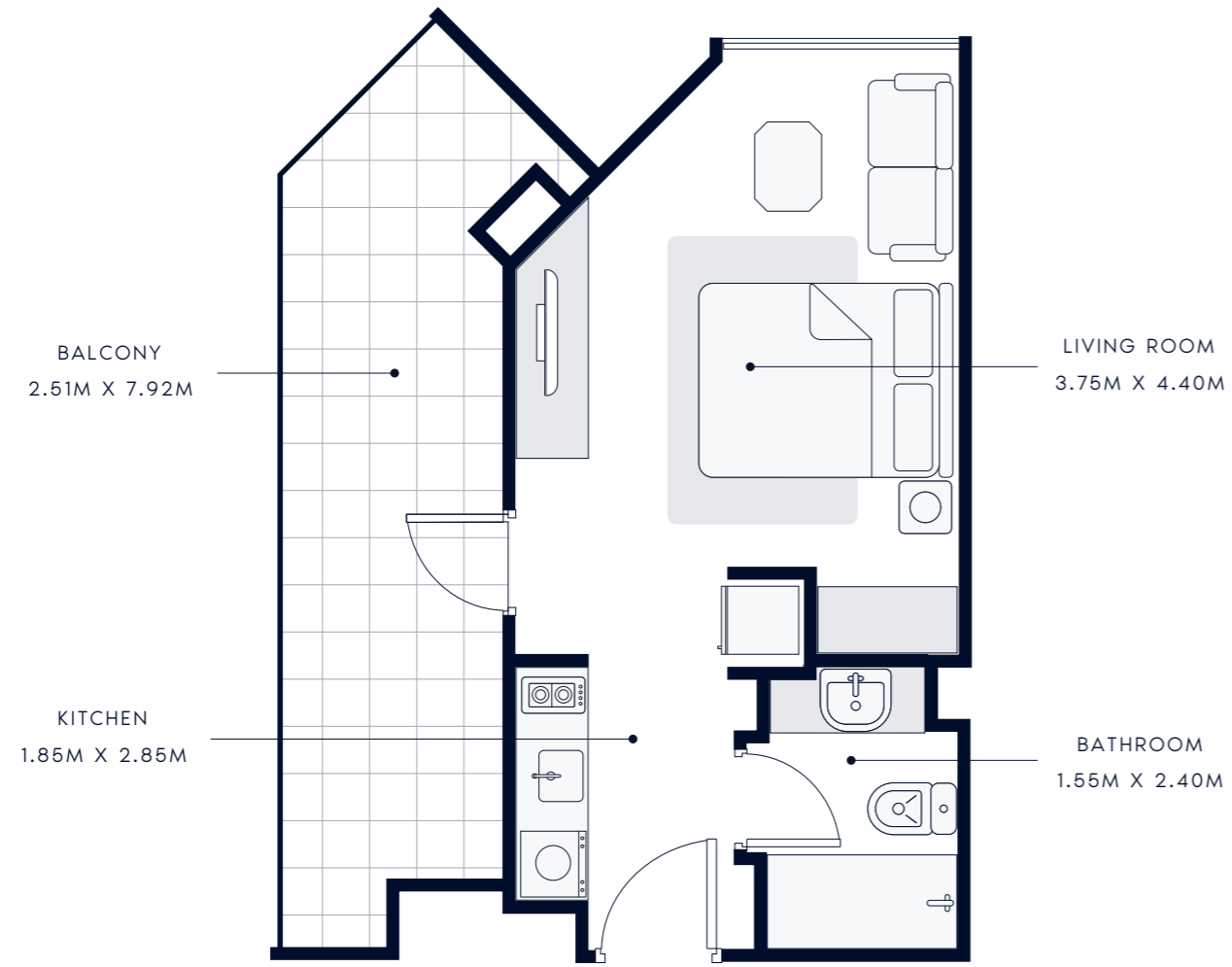


FLOOR PLATE



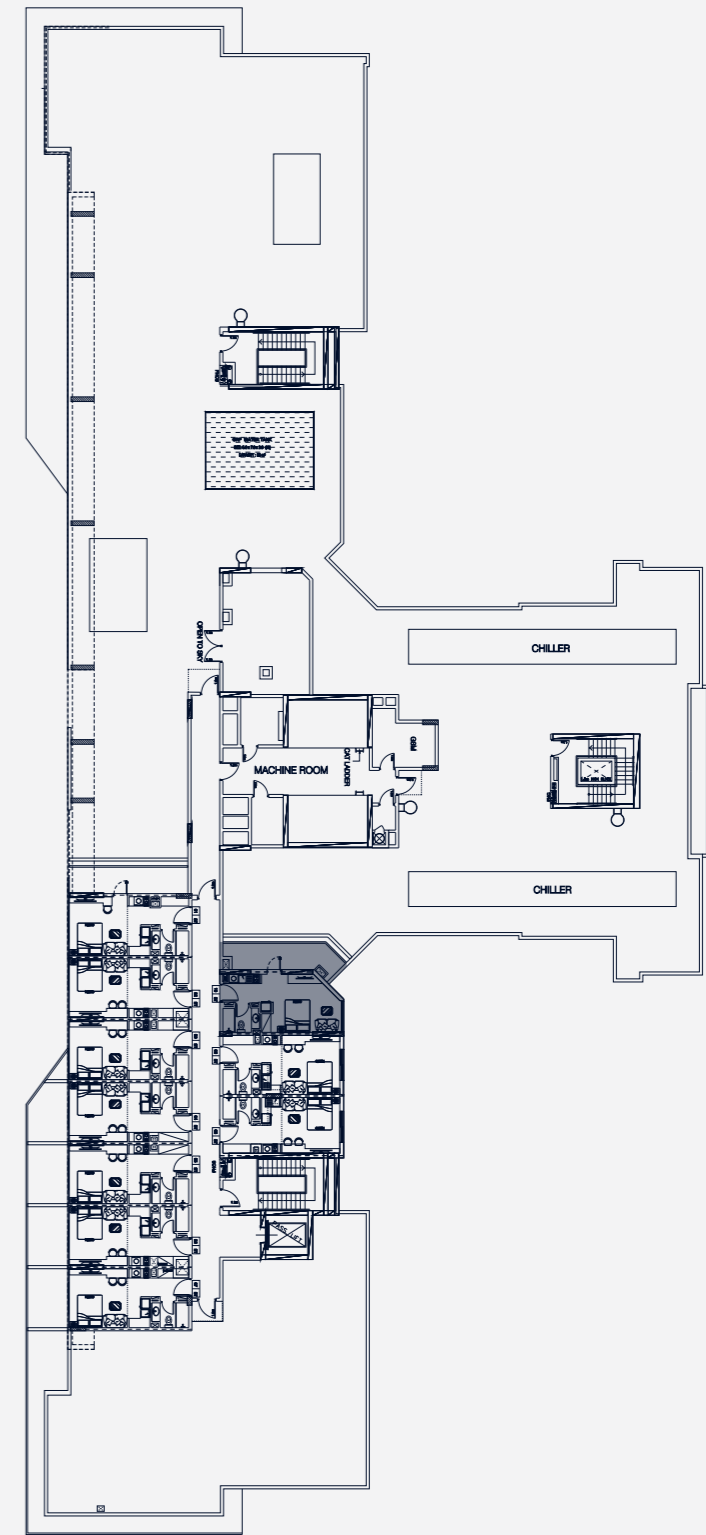


**STUDIO** TYPE 4  
13th Floor



SUIT AREA: 314.31 SQ.FT | TOTAL AREA: 512.90 SQ.FT

TYPICAL UNITS

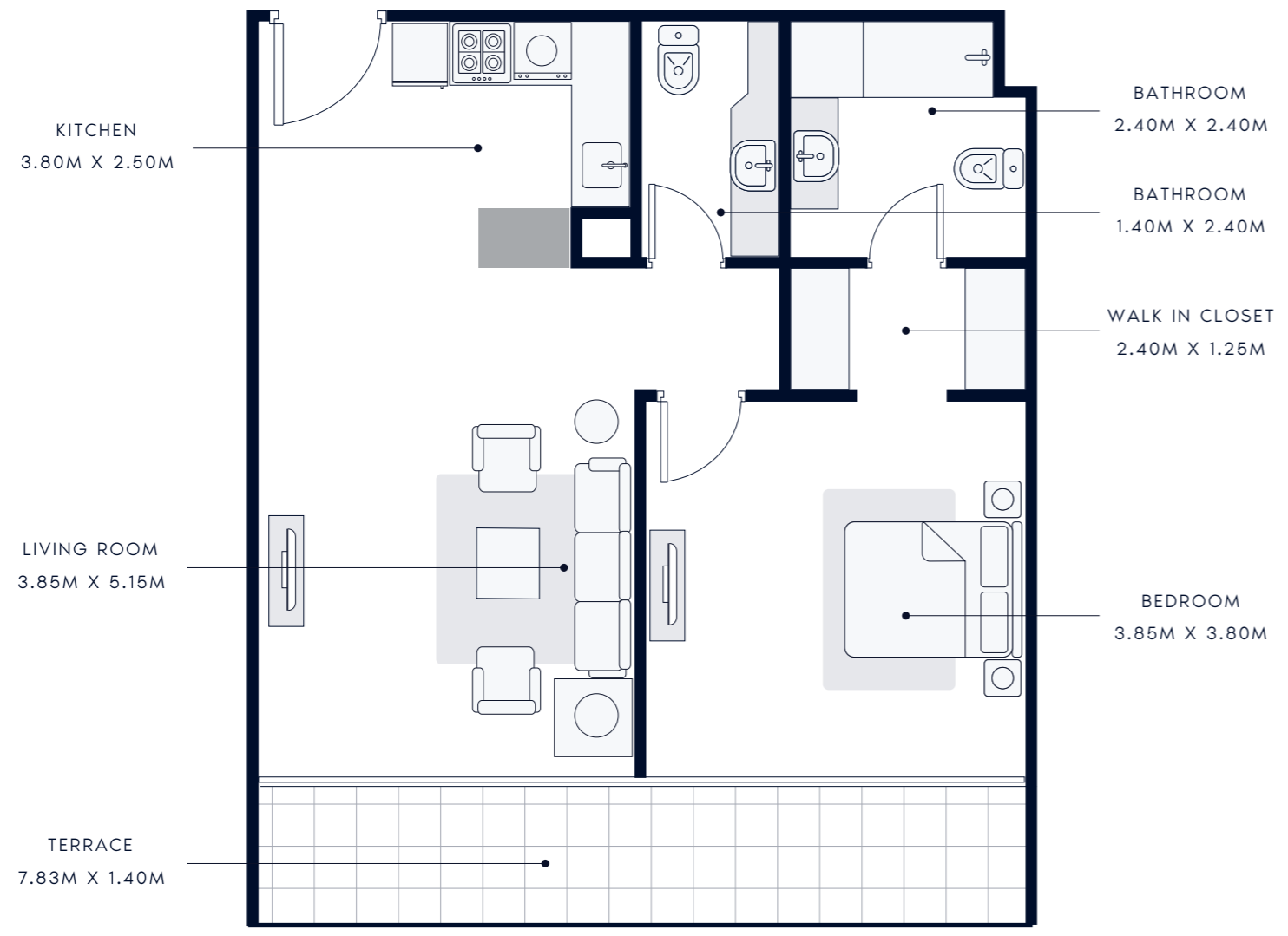


FLOOR PLATE



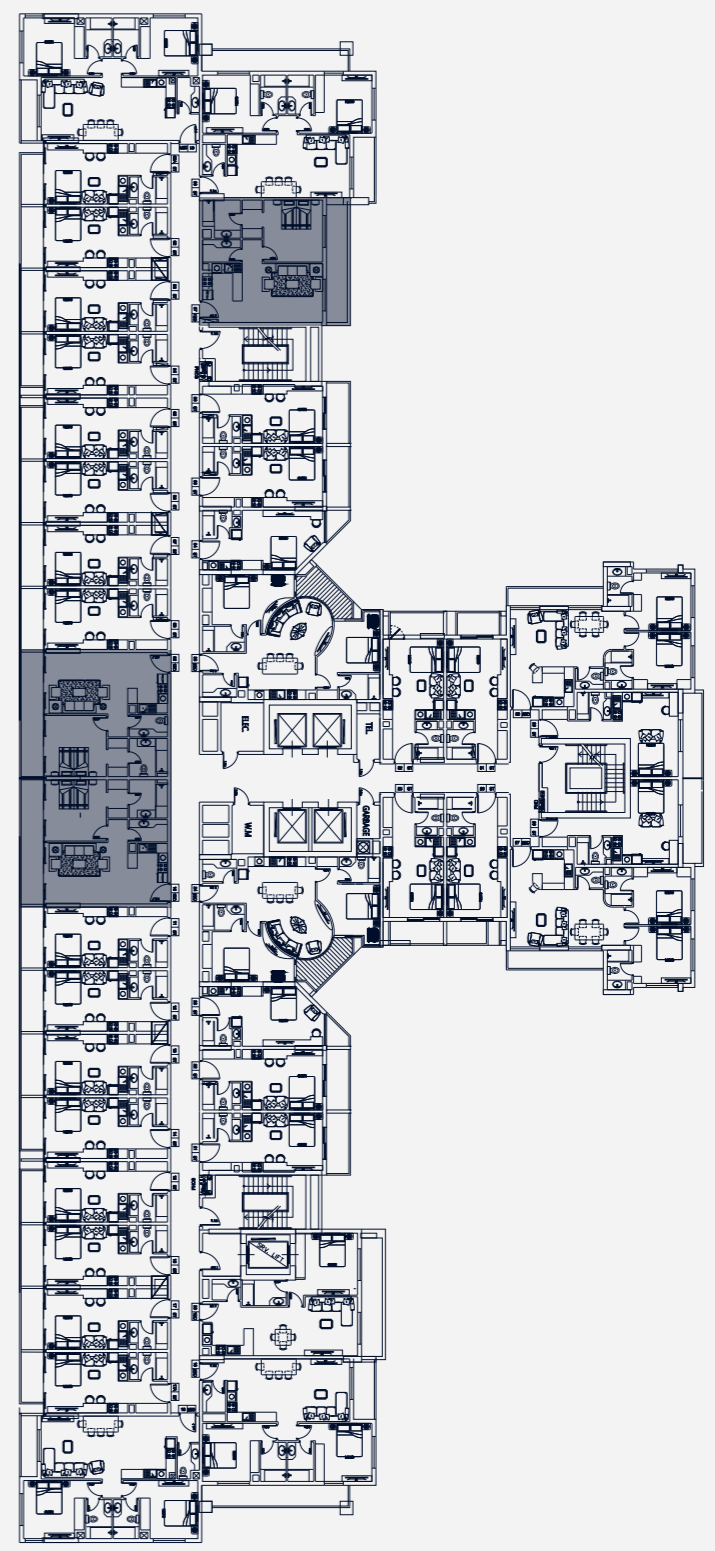
# 1 BEDROOM TYPE 1

1st to 12th Floor



SUIT AREA: 671.13 SQ.FT | TOTAL AREA: 801.48 SQ.FT

TYPICAL UNITS

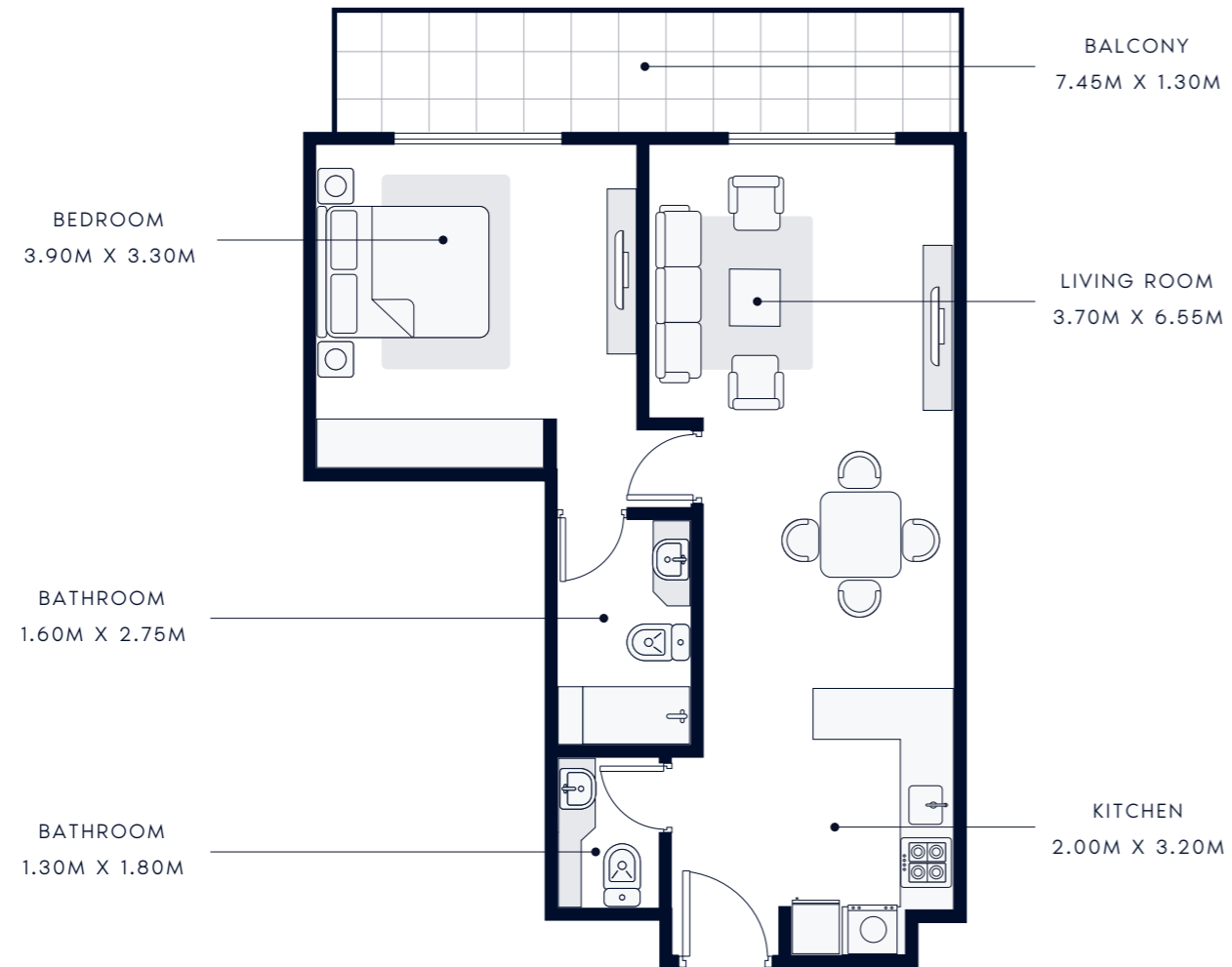


FLOOR PLATE



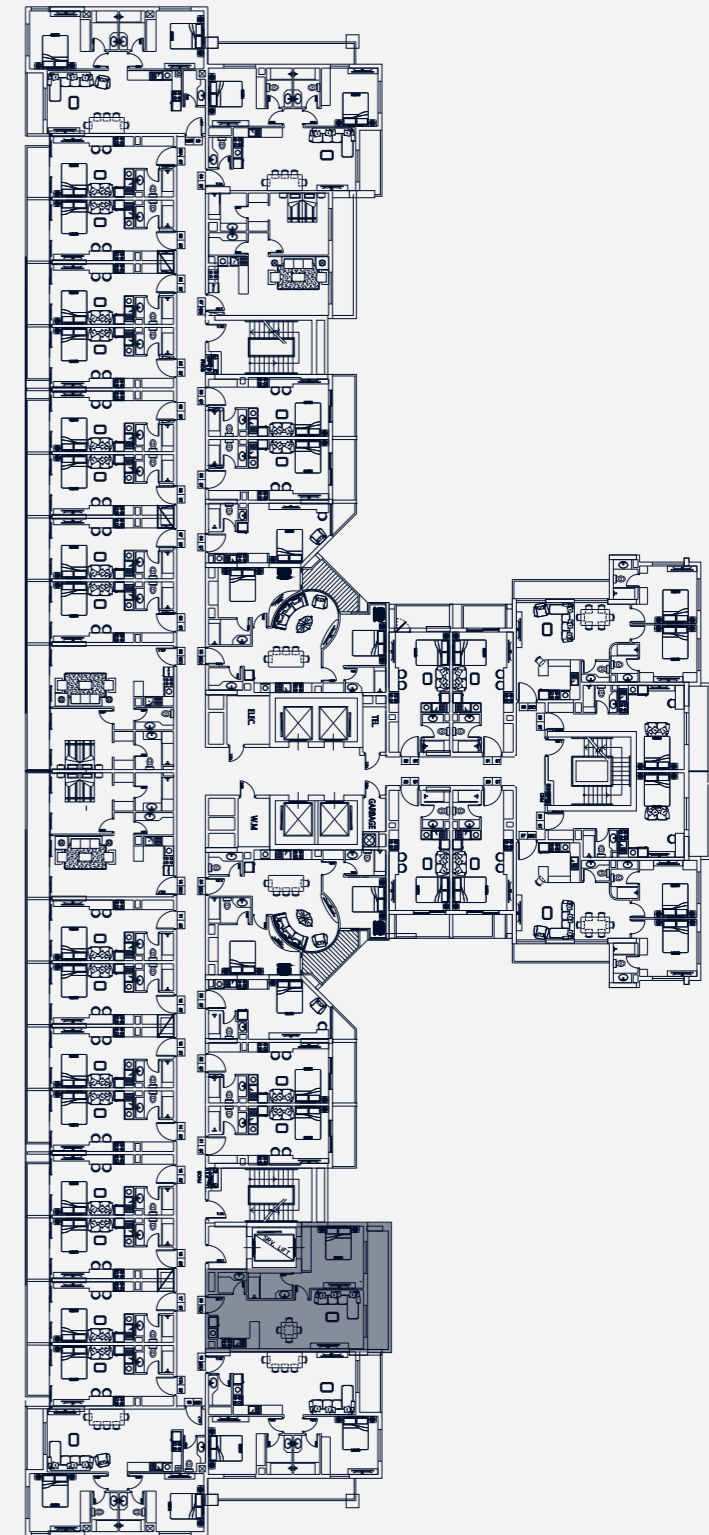
# 1 BEDROOM TYPE 2

1st to 11th Floor



SUIT AREA: 661.55 SQ.FT | TOTAL AREA: 790.07 SQ.FT

TYPICAL UNITS

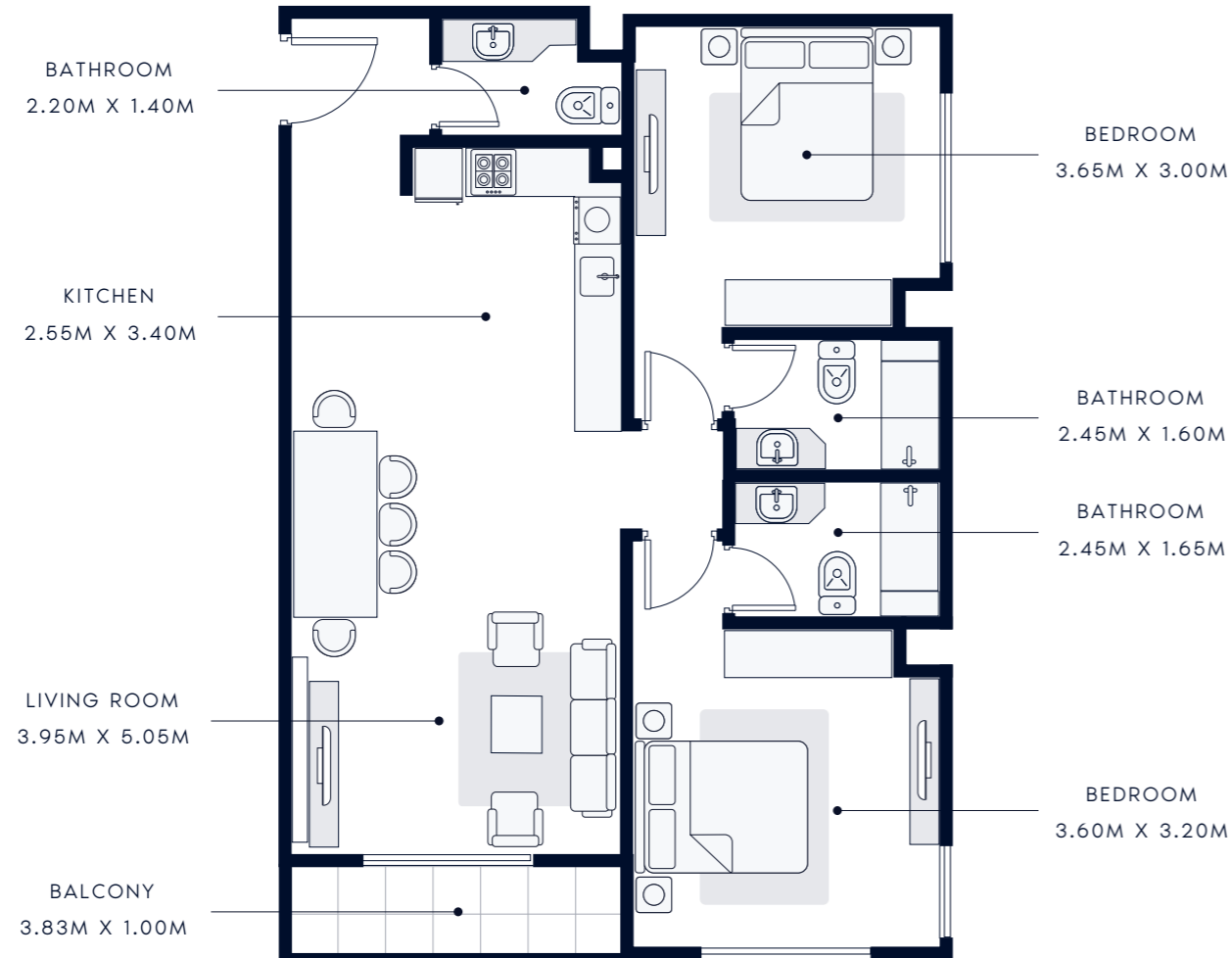


FLOOR PLATE



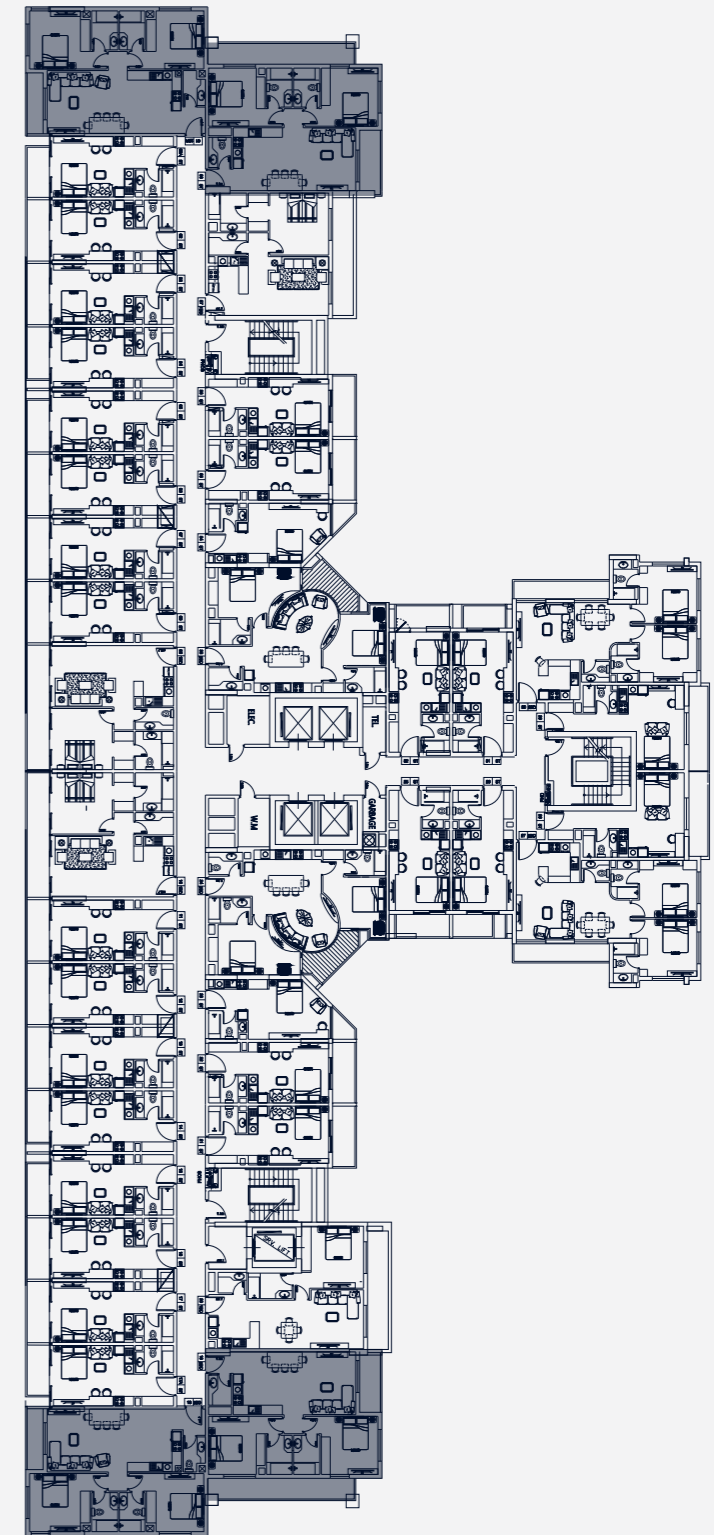
# 2 BEDROOM TYPE 1

1st to 12th Floor



SUIT AREA: 903.31 SQ.FT | TOTAL AREA: 952.17 SQ.FT

TYPICAL UNITS

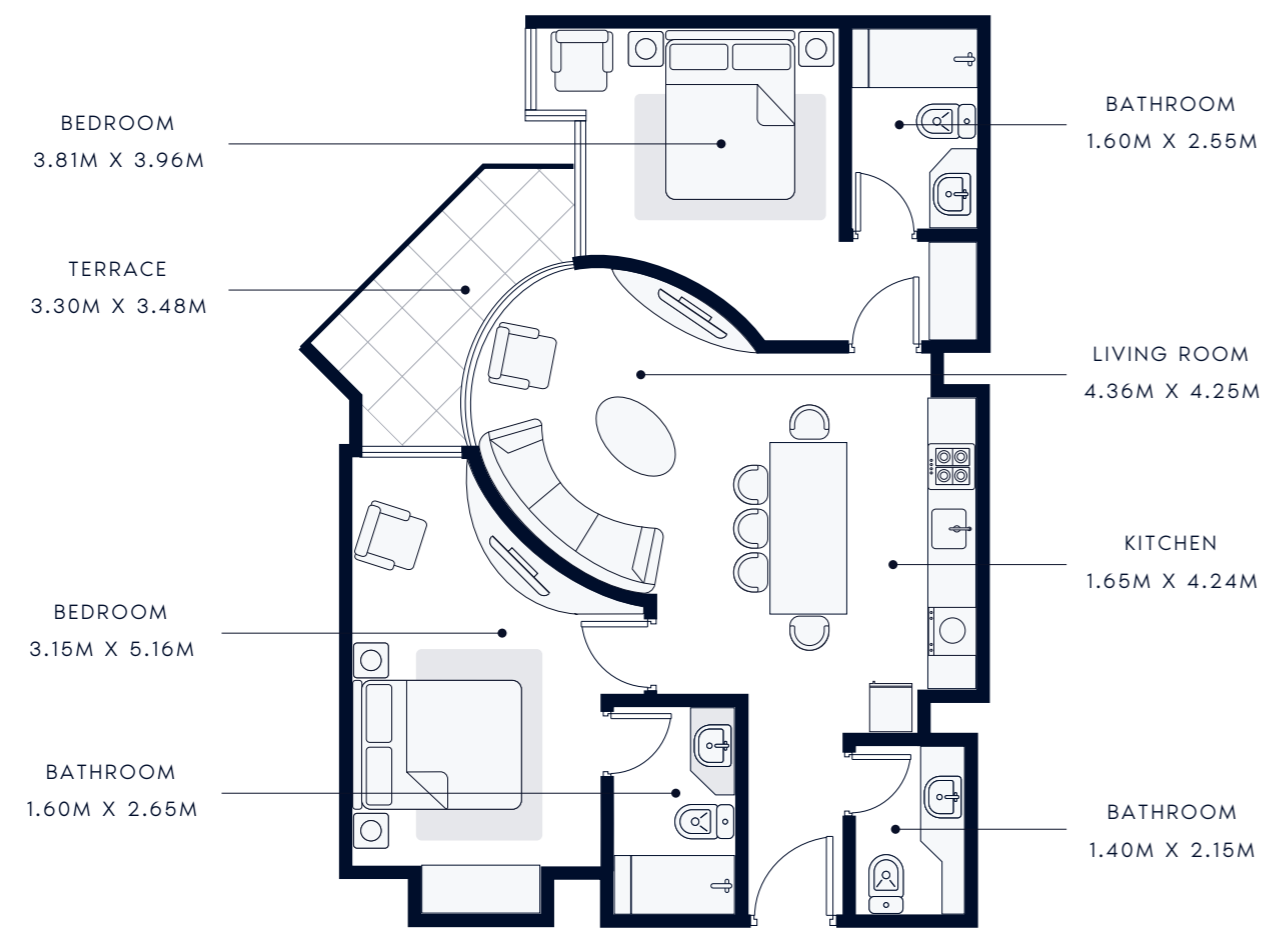


FLOOR PLATE



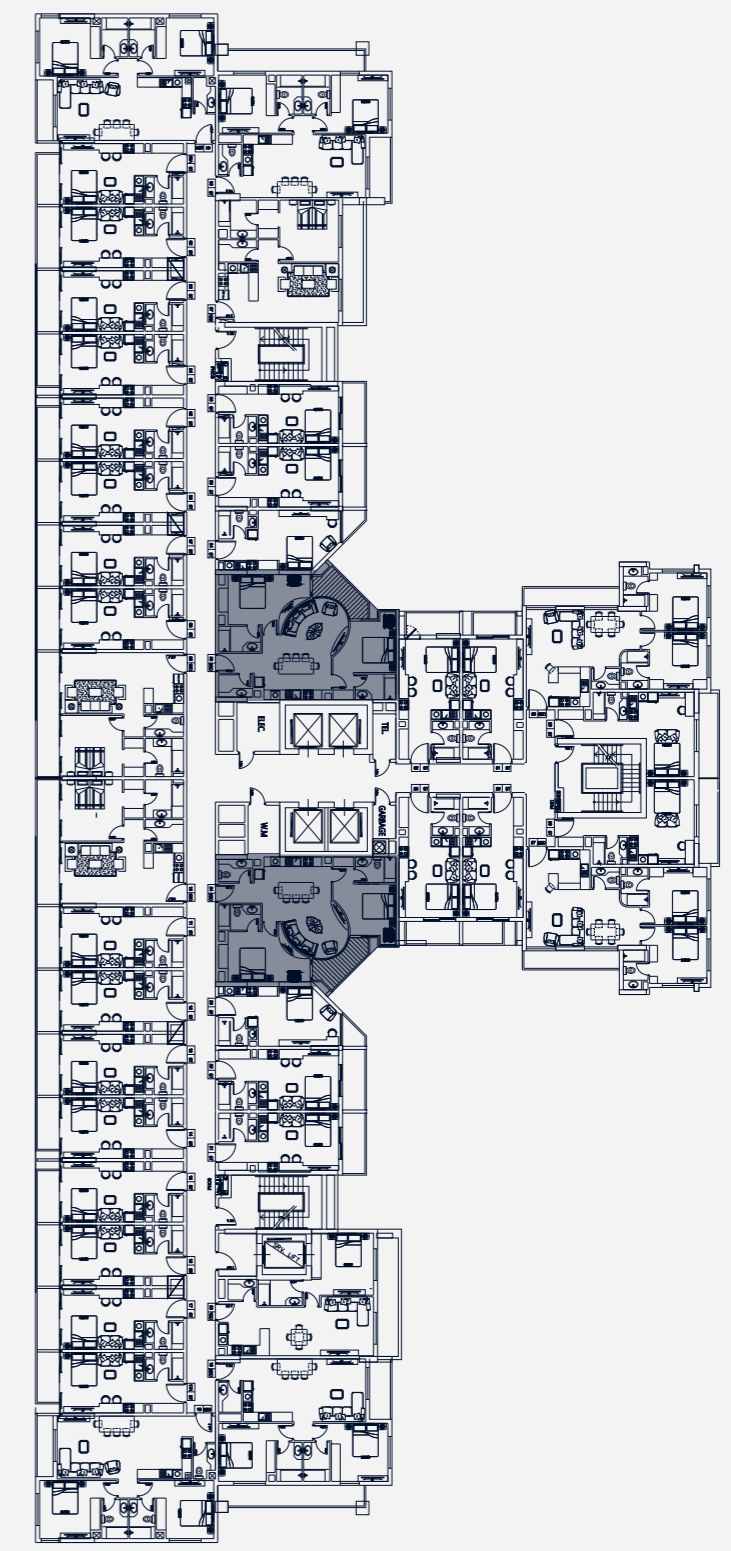
# 2 BEDROOM TYPE 2

1st to 12th Floor



SUIT AREA: 840.66 SQ.FT | TOTAL AREA: 906.21 SQ.FT

TYPICAL UNITS

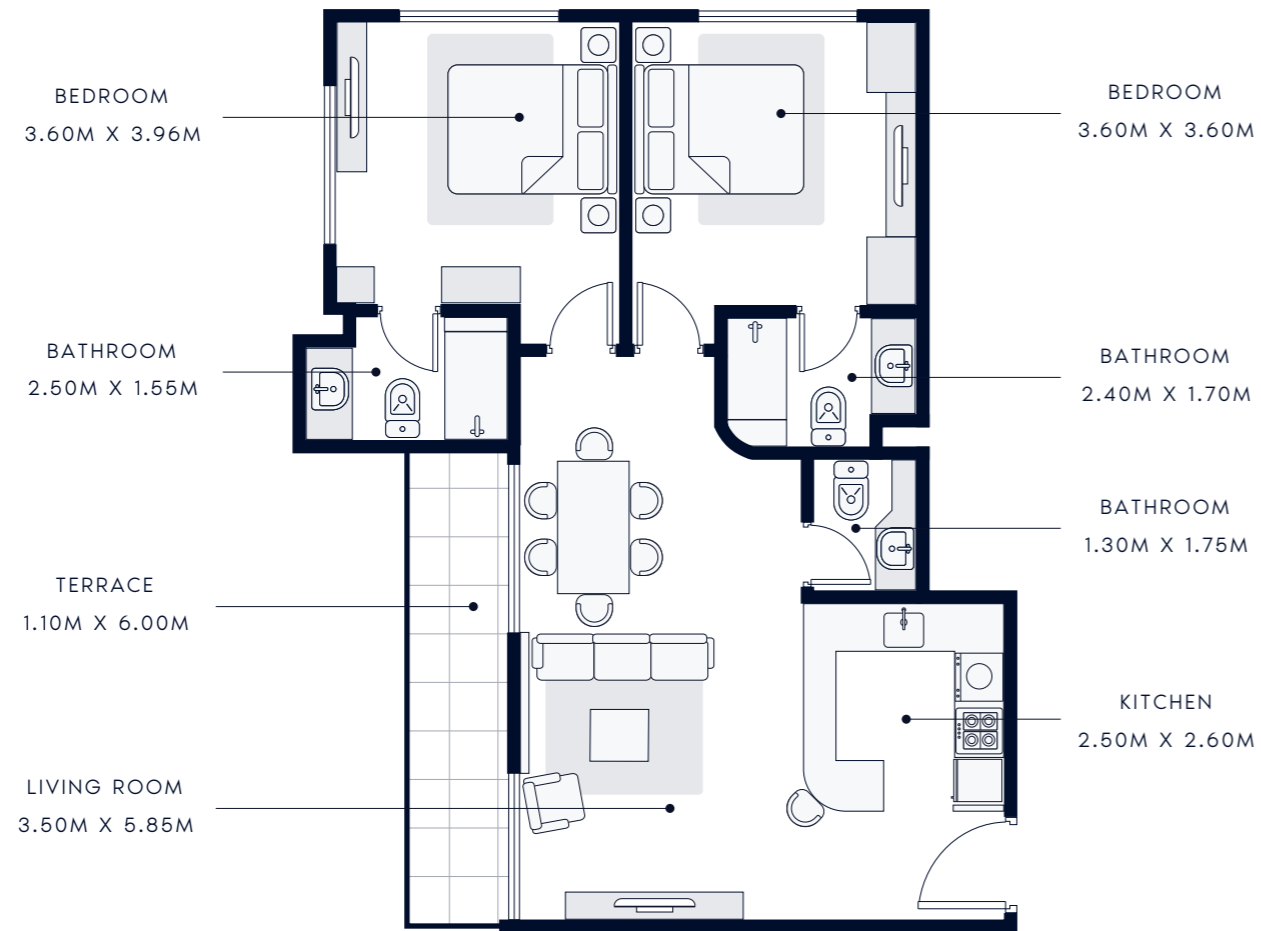


FLOOR PLATE



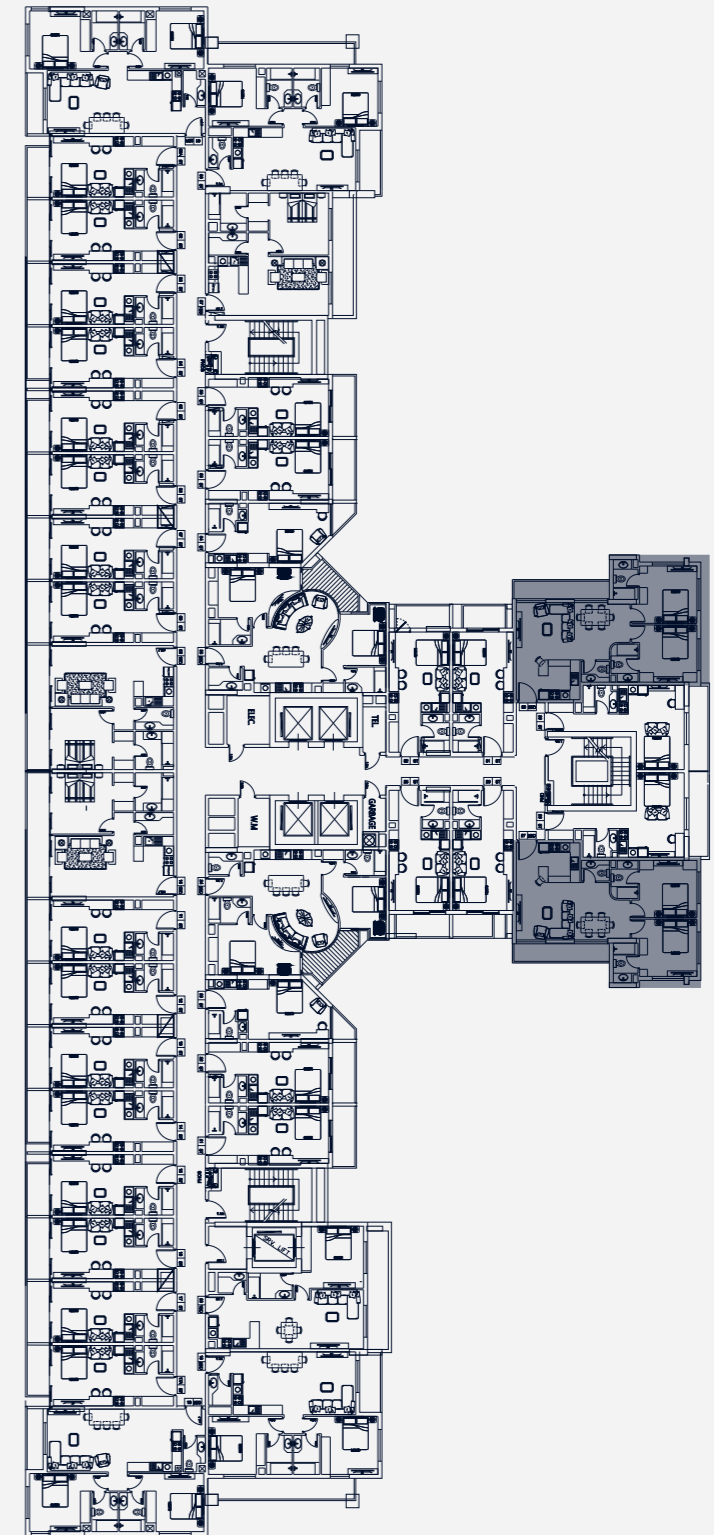
# 2 BEDROOM TYPE 3

2nd to 12th Floor



SUIT AREA: 846.26 SQ.FT | TOTAL AREA: 928.92 SQ.FT

TYPICAL UNITS

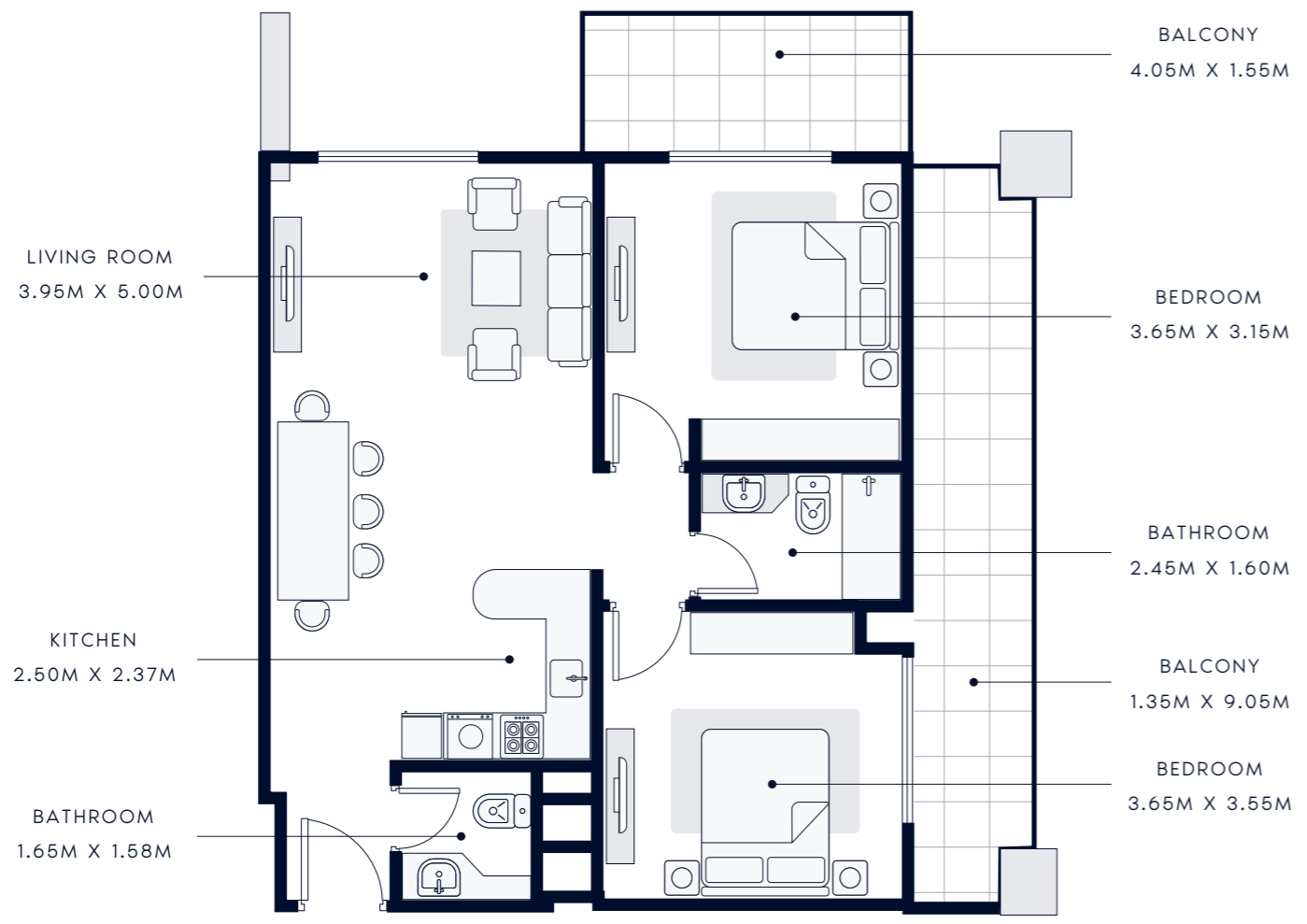


FLOOR PLATE



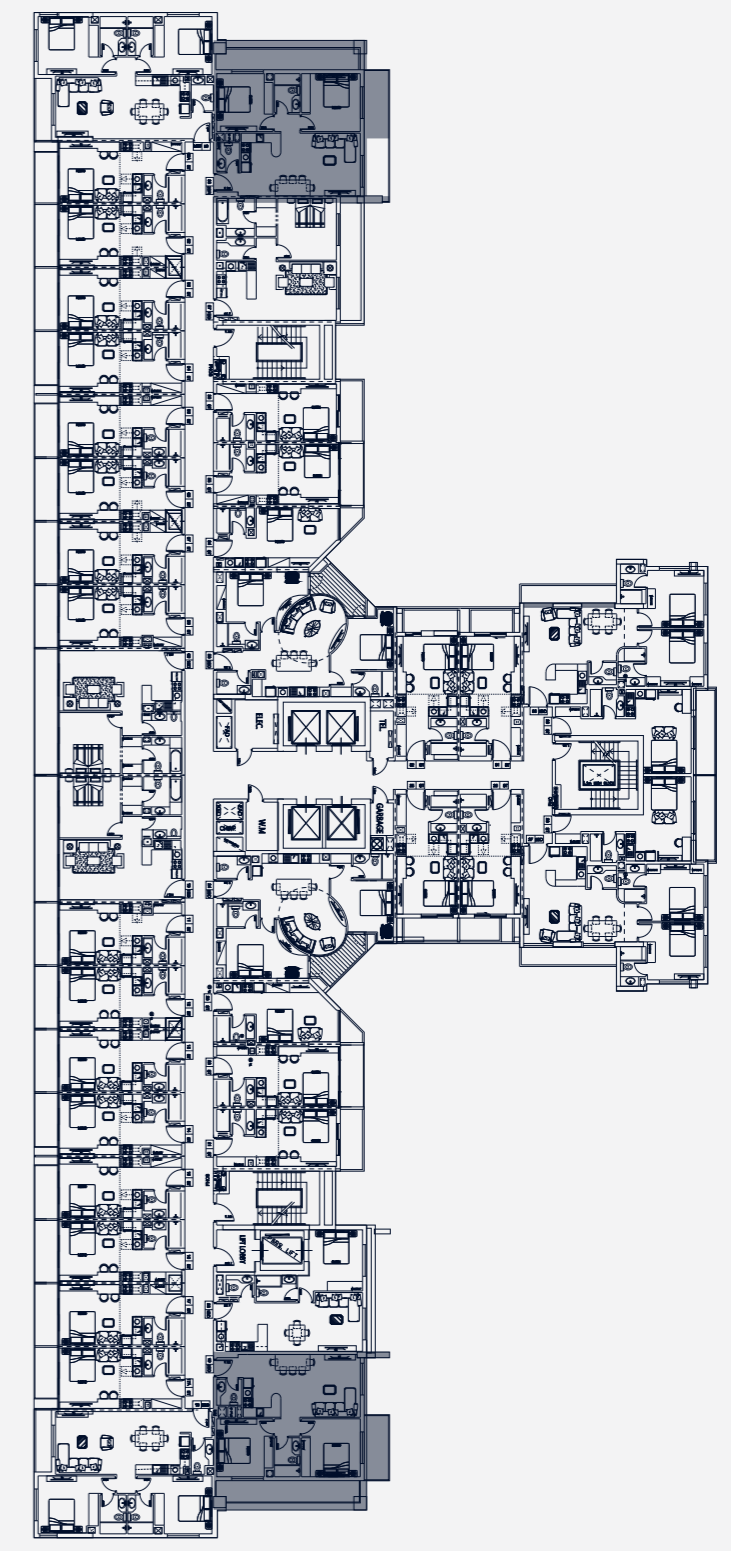
# 2 BEDROOM TYPE 4

12th Floor



SUIT AREA: 778.34 SQ.FT | TOTAL AREA: 999.00 SQ.FT

TYPICAL UNITS

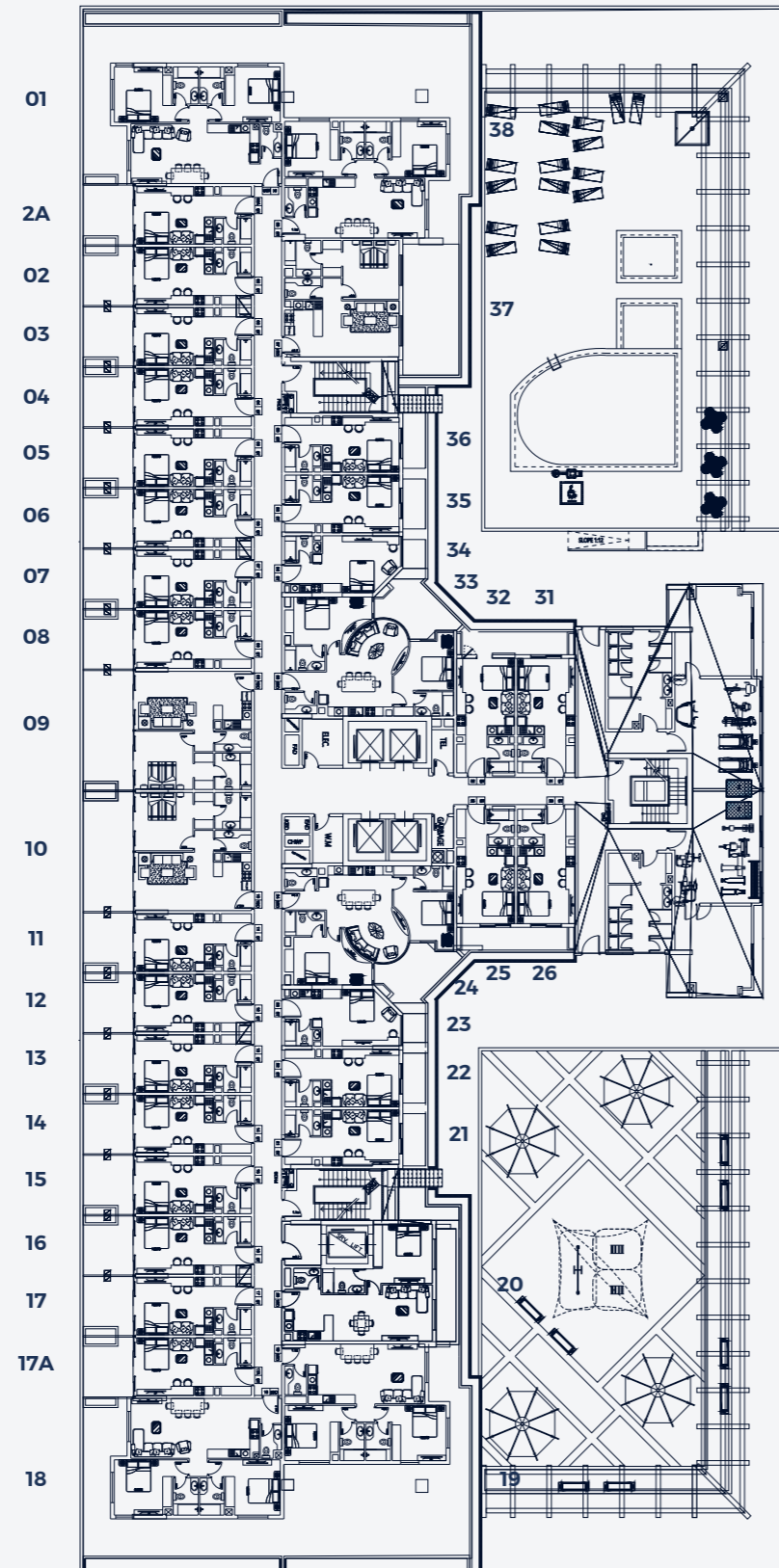


FLOOR PLATE

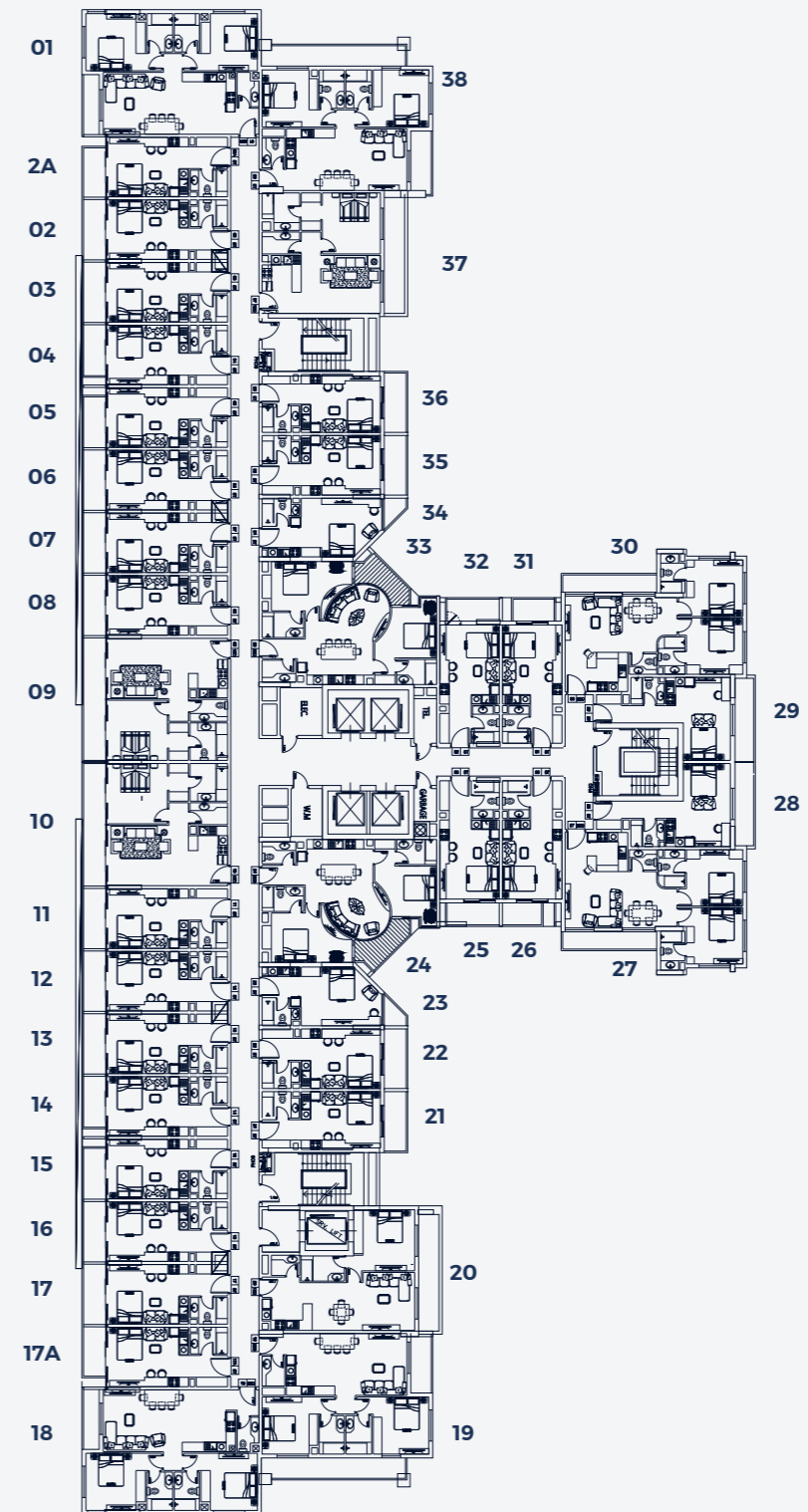




### 1st Floor



### 2nd to 7th and 10th Floor

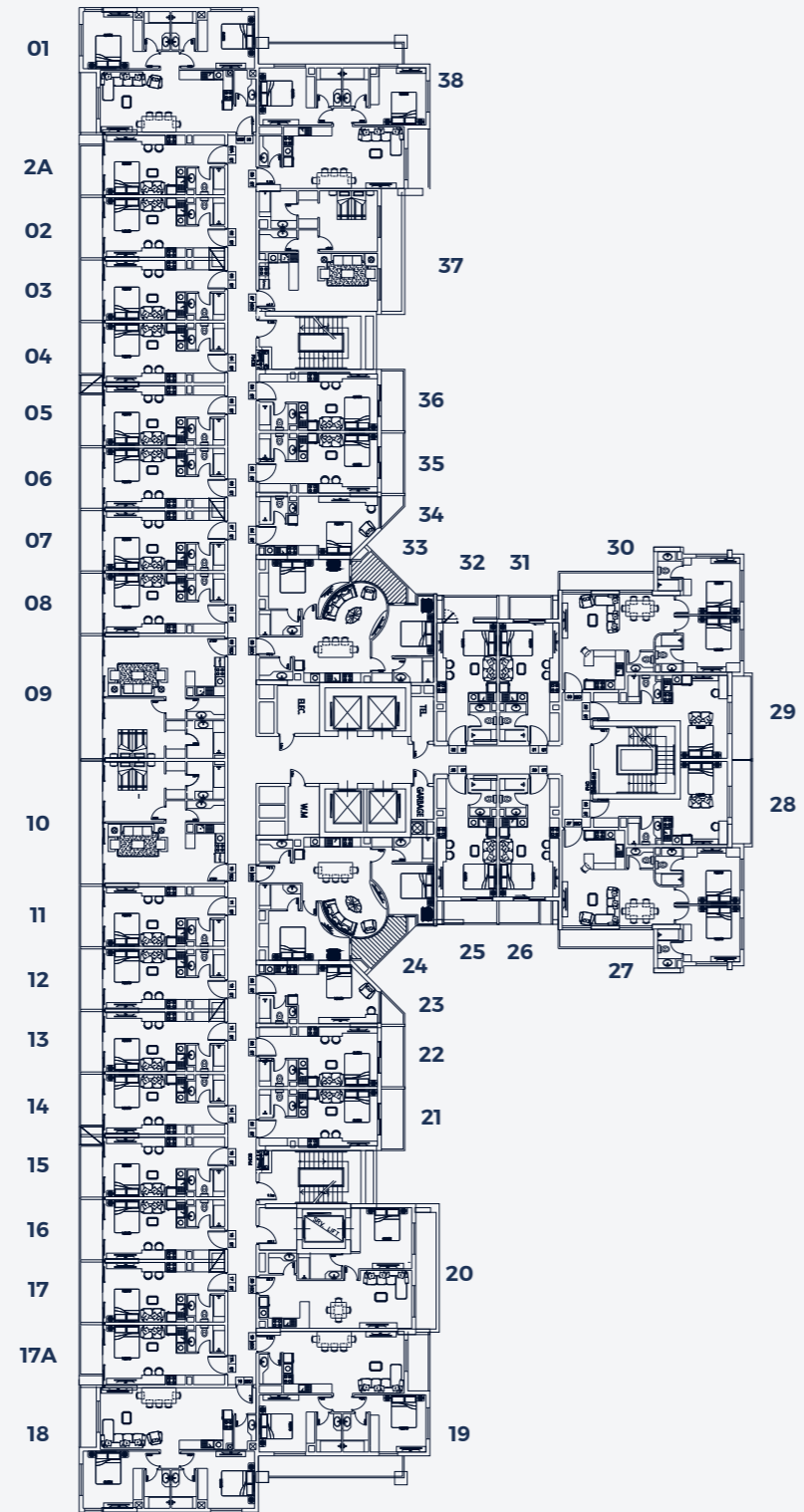


TYPICAL FLOORS | UNIT NUMBERS

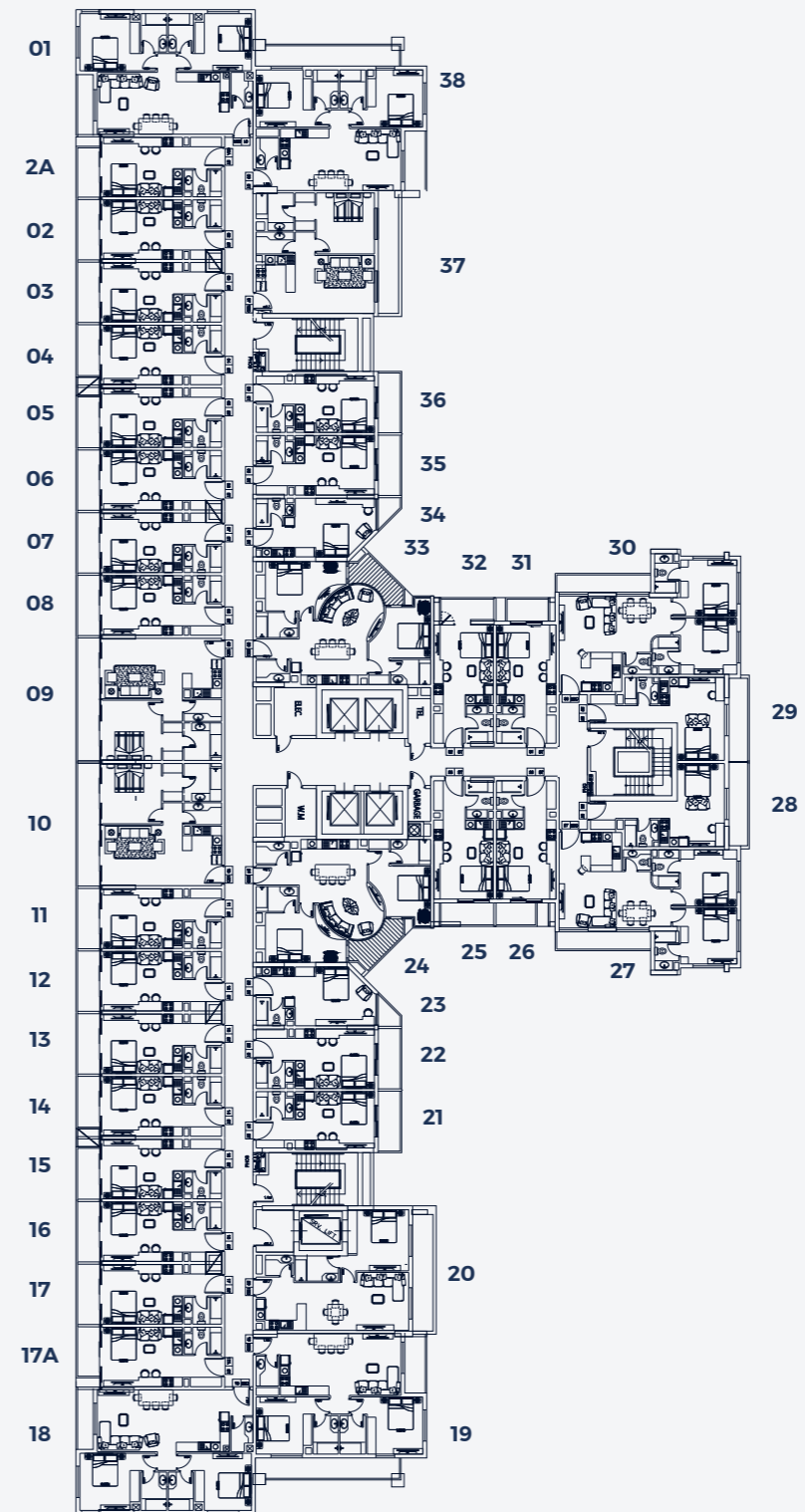




### 8th Floor



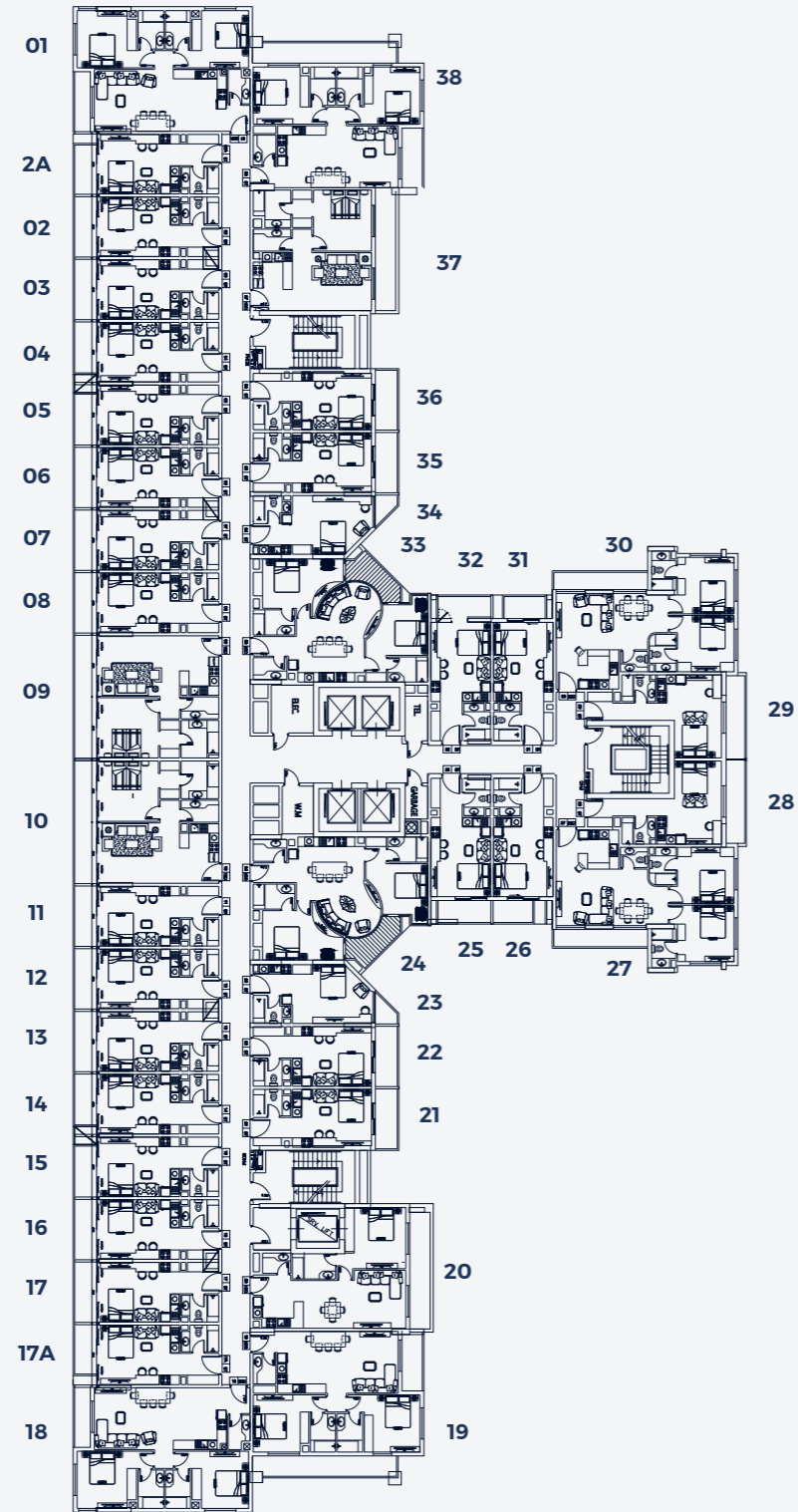
### 9th Floor



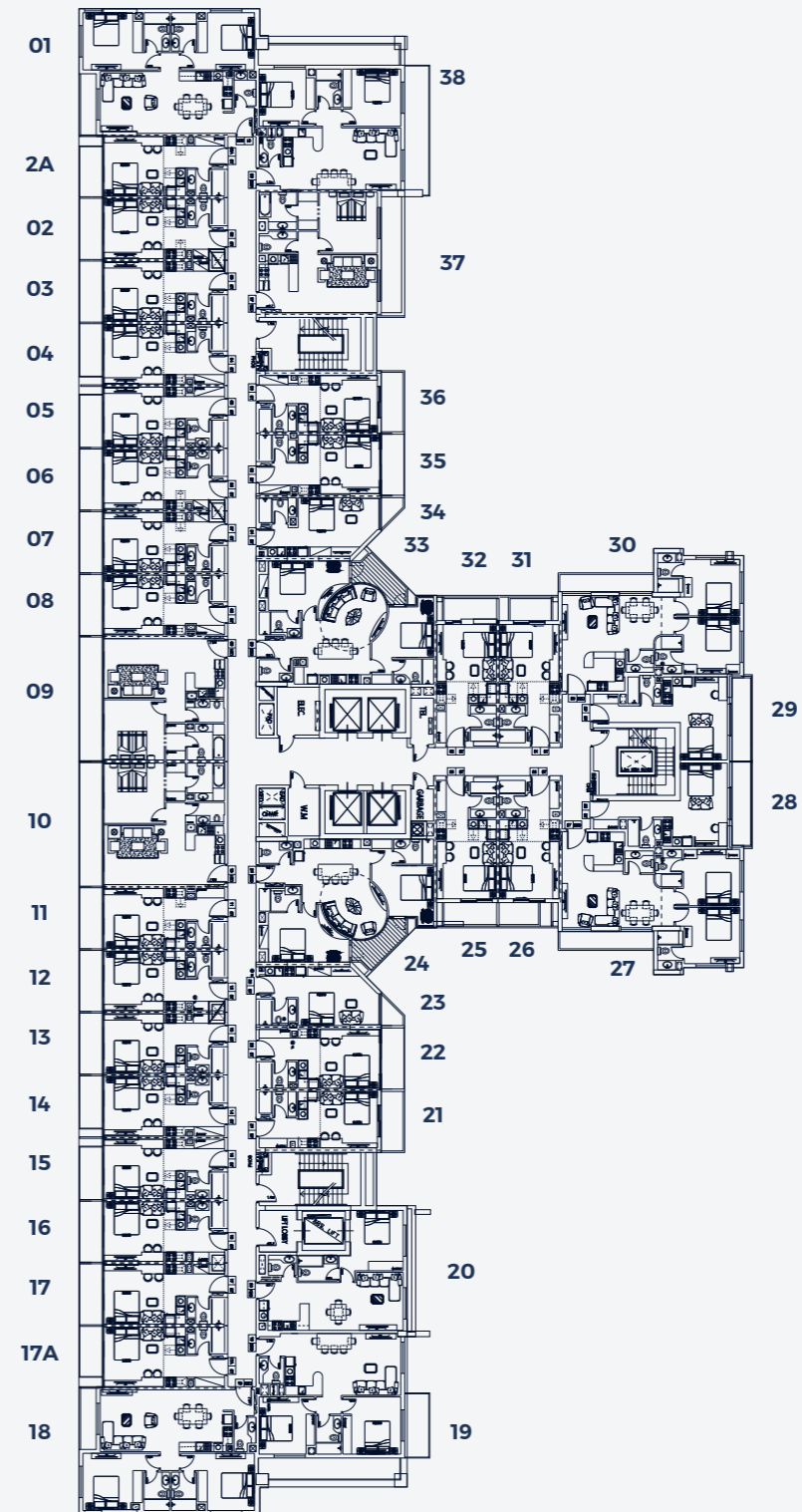
TYPICAL FLOORS | UNIT NUMBERS



### 11th Floor



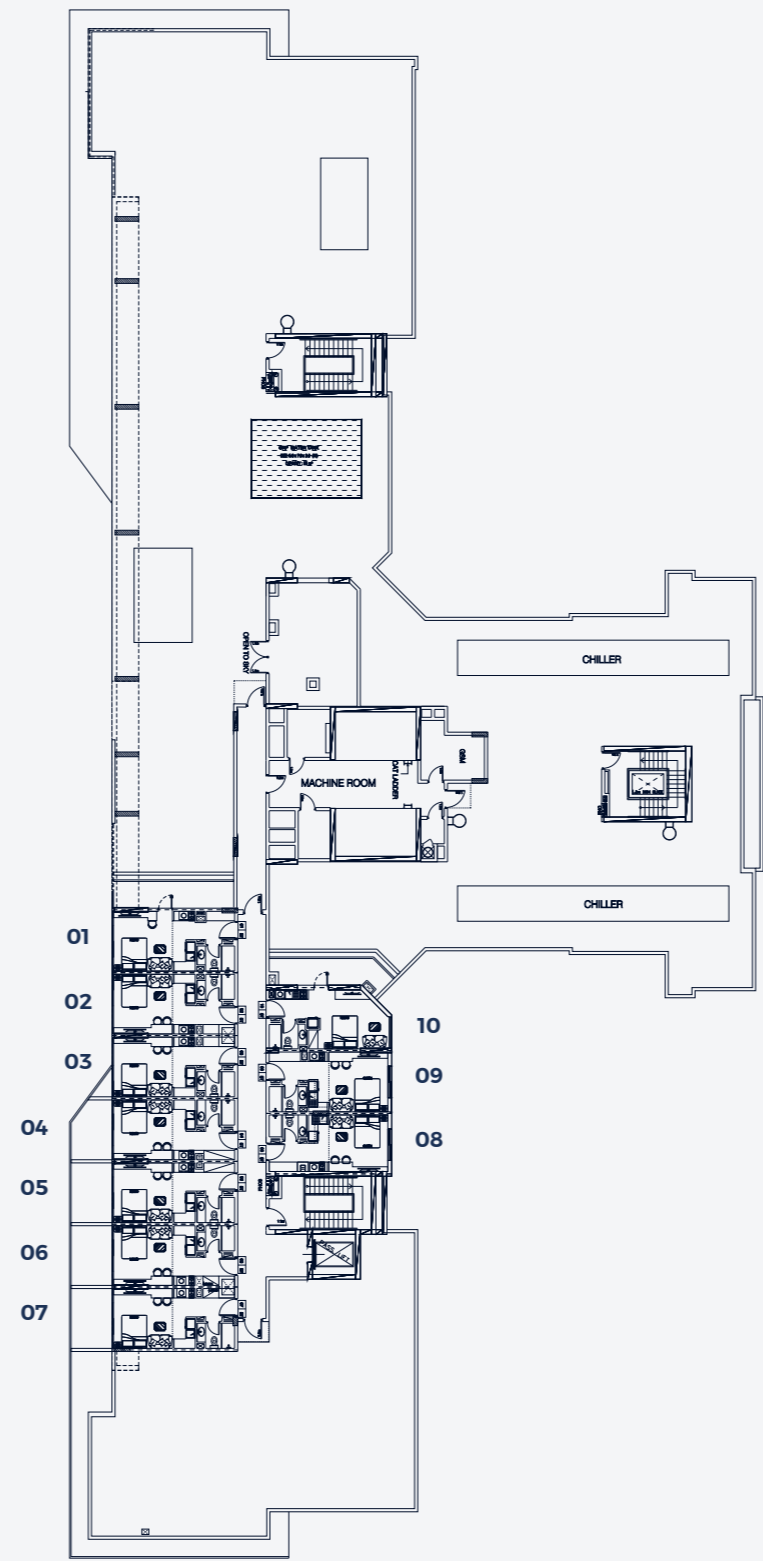
### 12th Floor



TYPICAL FLOORS | UNIT NUMBERS



# 13th Floor



TYPICAL FLOORS | UNIT NUMBERS



### **Disclaimer**

Please note this floor plan is for marketing purposes and is to be used for presentation and indicative purposes only and not contractual. The Developer reserves the right to make revisions to the floor plans at any time which may include but not limited to any features, materials, dimensions, drawings, layout, design features, views, areas, images and amenities without notice.