

R O V E
HOME DOWNTOWN

**LIVE.
THRIVE.
ROVE.**



PRESENTED BY OCTA
ON BEHALF OF IRTH

OVERVIEW

Embrace Rove's forever-young spirit at Rove Home Downtown, the brand's first-ever residential project in Dubai. Here, inspiring design, vibrant art installations and fully-furnished apartments converge with an exceptional location and an extended playlist of life-enhancing amenities, making this residence a complete ecosystem that has everything you'll ever need.

This isn't just where you'll live.
It's where you'll thrive.





The ROVE logos, trade-marks and trade names (the "ROVE Marks") published in this publication are owned by or licensed to Rove Hotels LLC or its Group Companies (collectively referred to as "ROVE"). The use of the ROVE Marks by IRTD Development LLC (the "Company") has been authorised by ROVE under license, solely in relation to the intention of ROVE to supervise the operation of the "ROVE Home Downtown, Dubai" development located in Downtown, Dubai (the "Building") and in respect of the marketing and sale of the residences within the Building (the "Residences"). The Building and the Residences are not owned, developed or sold by ROVE. The Company, which is not an affiliate of ROVE, is responsible for the marketing and sales of the Residences. Accordingly, ROVE will not be responsible for: (a) any advertising claims or representations in this publication or otherwise made by the Company, (b) any content in this publication, (c) any marketing and/or data collection practices carried out by the Company; (d) any dealings or communications that you have with the Company; and (e) any infringement of third party rights or local laws in connection with this publication. ROVE strongly recommends that you confirm any information appearing in this publication and consult your professional advisors before proceeding with any related transaction. To the maximum extent permitted by law, ROVE will not be liable for any form of loss or damage arising out of or in connection with this publication, the Building, the Residences, or any dealings or communications that you have with the Company.



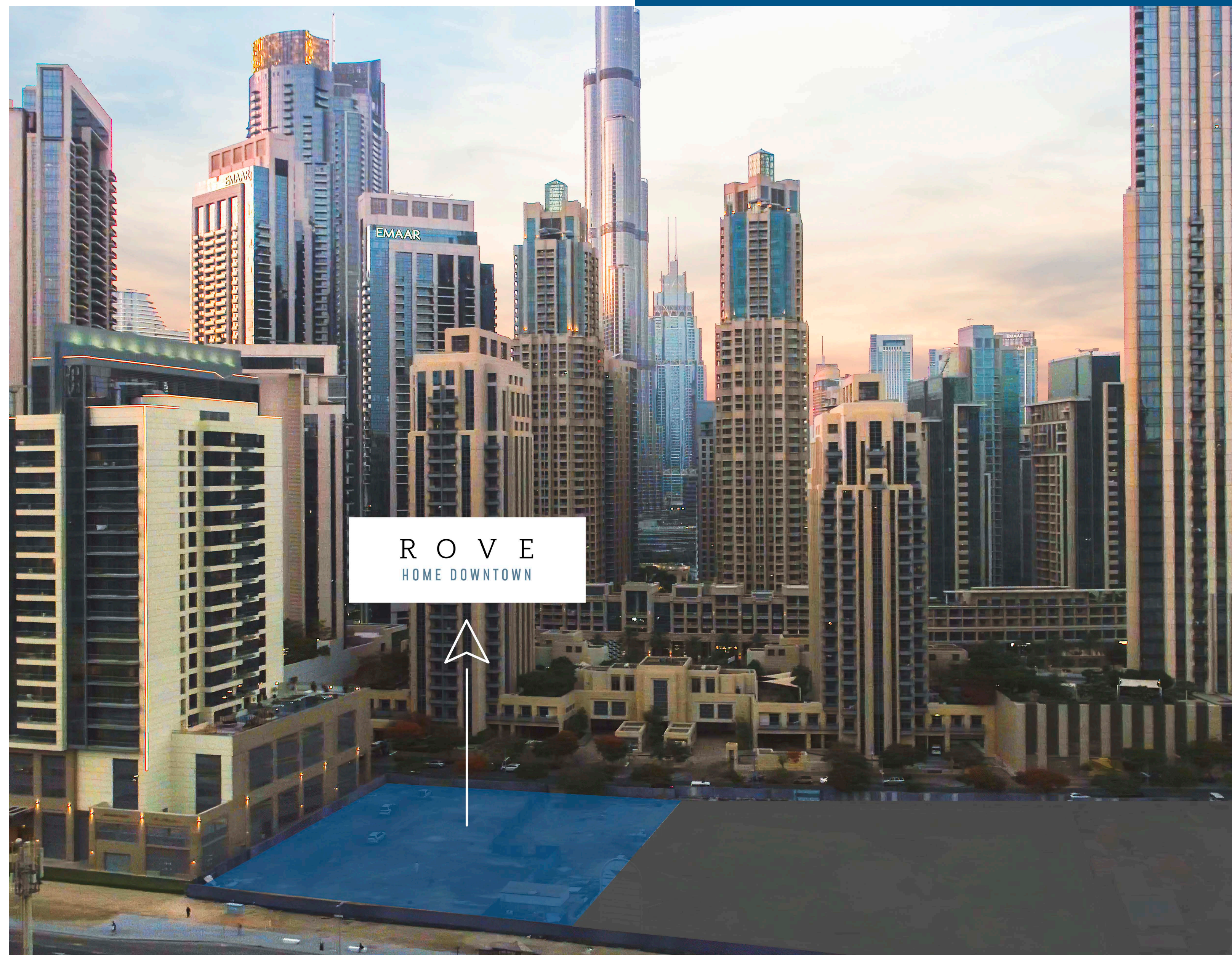
The ROVE logos, trade-marks and trade names (the "ROVE Marks") published in this publication are owned by or licensed to Rove Hotels LLC or its Group Companies (collectively referred to as "ROVE"). The use of the ROVE Marks by IRTD Development LLC (the "Company") has been authorised by ROVE under license, solely in relation to the intention of ROVE to supervise the operation of the "ROVE Home Downtown, Dubai" development located in Downtown, Dubai (the "Building") and in respect of the marketing and sale of the residences within the Building (the "Residences"). The Building and the Residences are not owned, developed or sold by ROVE. The Company, which is not an affiliate of ROVE, is responsible for the marketing and sales of the Residences. Accordingly, ROVE will not be responsible for: (a) any advertising claims or representations in this publication or otherwise made by the Company, (b) any content in this publication, (c) any marketing and/or data collection practices carried out by the Company; (d) any dealings or communications that you have with the Company; and (e) any infringement of third party rights or local laws in connection with this publication. ROVE strongly recommends that you confirm any information appearing in this publication and consult your professional advisors before proceeding with any related transaction. To the maximum extent permitted by law, ROVE will not be liable for any form of loss or damage arising out of or in connection with this publication, the Building, the Residences, or any dealings or communications that you have with the Company.

LOCATION AND URBAN PROXIMITY

1. Burj Khalifa [5 mins. by road]
2. The Dubai Fountain [6 mins. by road]
3. Dubai Mall [6 mins. by road]
4. Chinatown [6 mins. by road]
5. Burj Park [4 mins. by road]
6. Dubai Opera [6 mins. by road]
7. Souk Al Bahar [7 mins. by road]
8. Palace Downtown [8 mins. by road]
9. Wings of Mexico Statue [7 mins. by road]
10. Foundry Progressive Art Space [3 mins. by road]



SITE LOCATION





The ROVE logos, trade-marks and trade names (the "ROVE Marks") published in this publication are owned by or licensed to Rove Hotels LLC or its Group Companies (collectively referred to as "ROVE"). The use of the ROVE Marks by IRTD Development LLC (the "Company") has been authorised by ROVE under license, solely in relation to the intention of ROVE to supervise the operation of the "ROVE Home Downtown, Dubai" development located in Downtown, Dubai (the "Building") and in respect of the marketing and sale of the residences within the Building (the "Residences"). The Building and the Residences are not owned, developed or sold by ROVE. The Company, which is not an affiliate of ROVE, is responsible for the marketing and sales of the Residences. Accordingly, ROVE will not be responsible for: (a) any advertising claims or representations in this publication or otherwise made by the Company, (b) any content in this publication, (c) any marketing and/or data collection practices carried out by the Company; (d) any dealings or communications that you have with the Company; and (e) any infringement of third party rights or local laws in connection with this publication. ROVE strongly recommends that you confirm any information appearing in this publication and consult your professional advisors before proceeding with any related transaction. To the maximum extent permitted by law, ROVE will not be liable for any form of loss or damage arising out of or in connection with this publication, the Building, the Residences, or any dealings or communications that you have with the Company.

OVERALL PLAN TYPICAL FLOOR

LEVEL 2-13



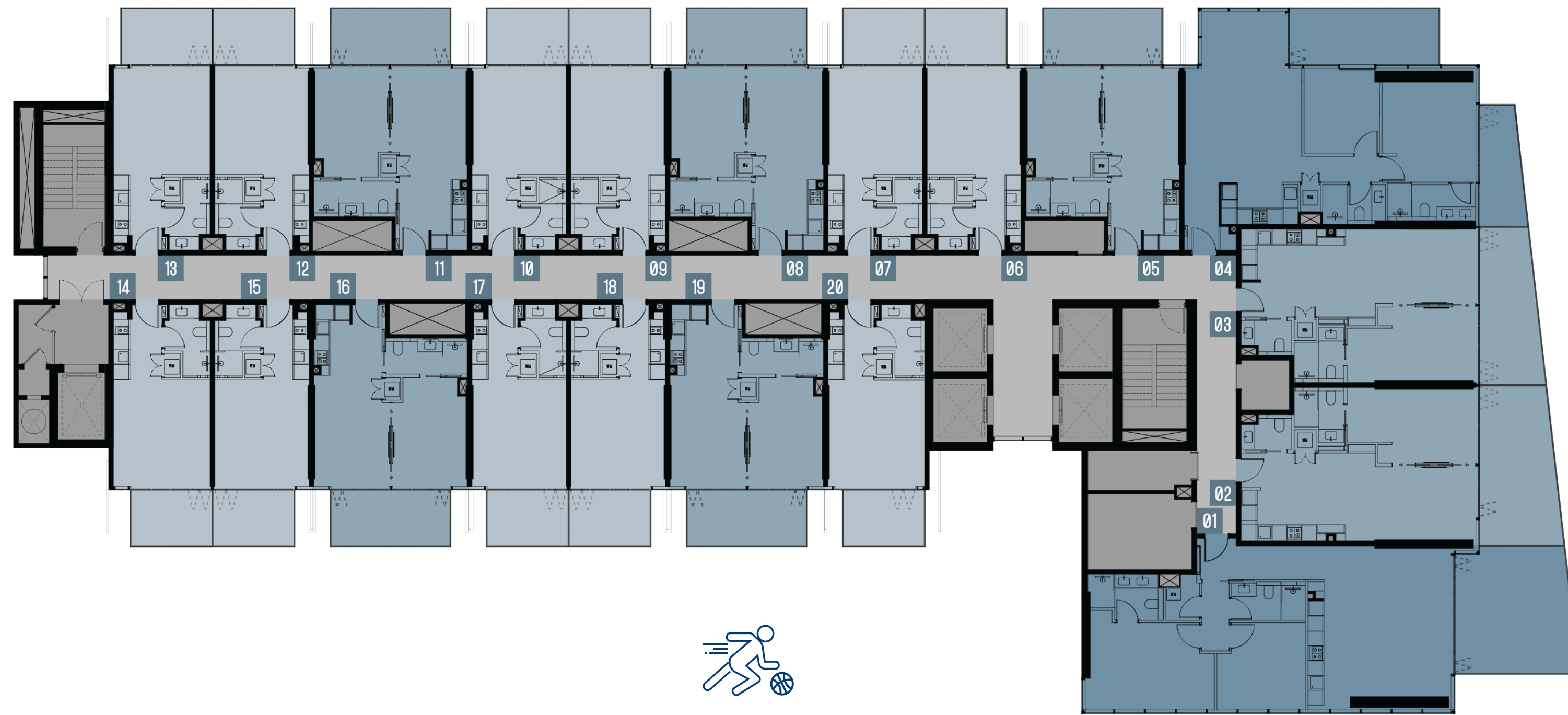
AMENITIES
VIEW



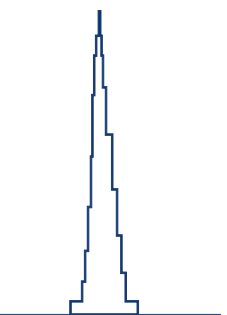
CITY
VIEW



BOULEVARD
FACING



SPORTS ACTIVITIES
VIEW



BOULEVARD
BURJ KHALIFA
VIEW



Legend

	Studio	11 Units
	1 Bedroom	7 Units
	2 Bedroom	2 Units

OVERALL PLAN TYPICAL FLOOR

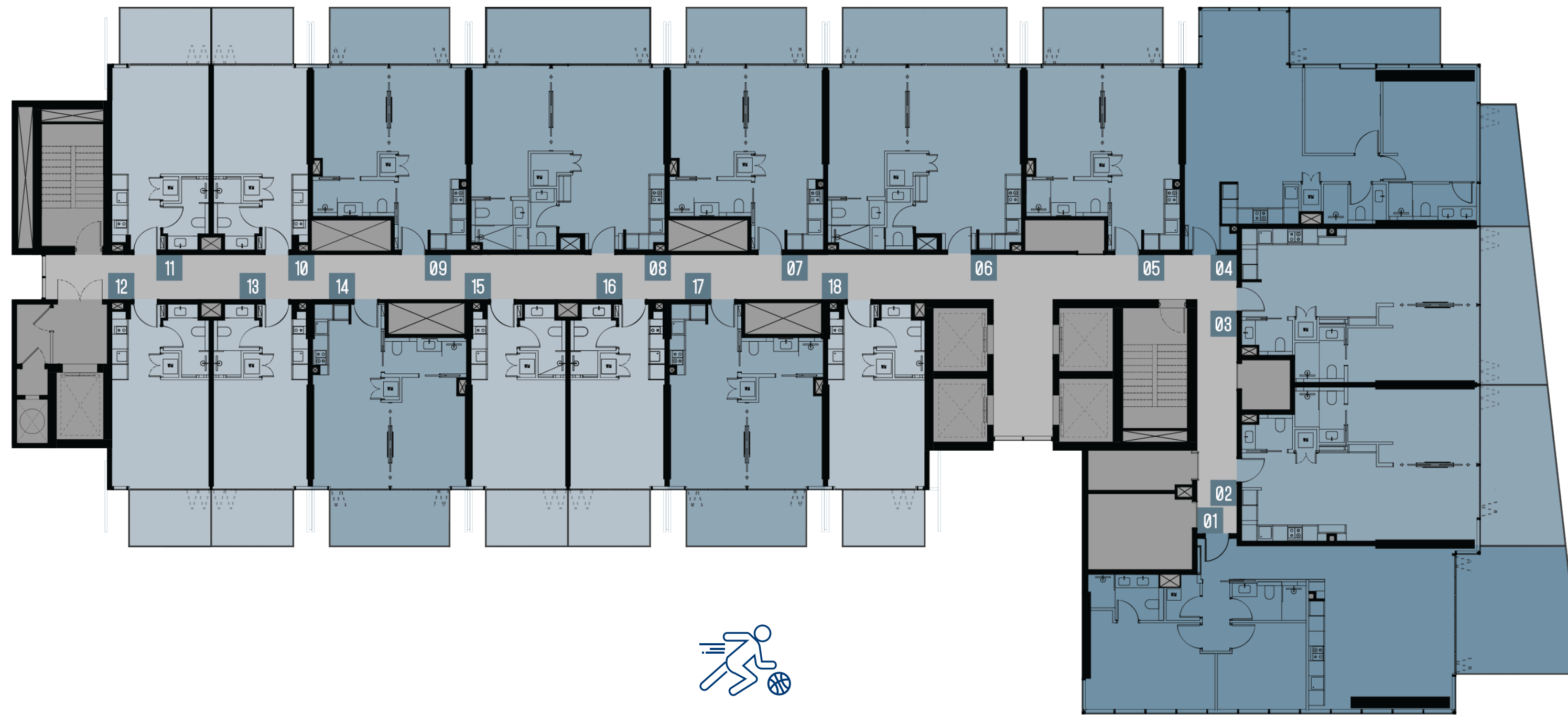
LEVEL 14-19



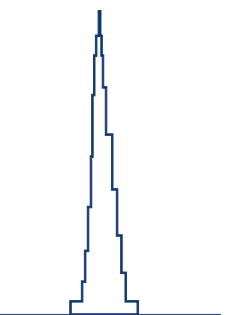
AMENITIES
VIEW



BOULEVARD
FACING



CITY VIEW



BOULEVARD
BURJ KHALIFA
VIEW



SPORTS ACTIVITIES
VIEW

Legend

	Studio	9 Units
	1 Bedroom	7 Units
	2 Bedroom	2 Units



REASONS TO INVEST

At Rove's new property in downtown, these distinguishing factors set us apart and make our project an enticing choice for those seeking a premium lifestyle experience.

Key differentiating factors for ROVE HOME's launch in Downtown are as follows:

Rove Home Downtown is the first Rove Home project to be launched in Dubai.



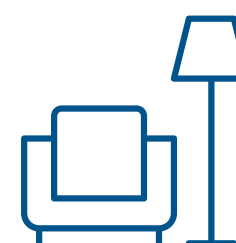
LIFE-ENHANCING AMENITIES

Enjoy one of the highest ratios of amenities per residential unit in Downtown Dubai, keeping you engaged from dawn to dusk. From a running track and a lap pool to co-working spaces and a paddle tennis court, live life to the fullest at Rove Home Downtown.



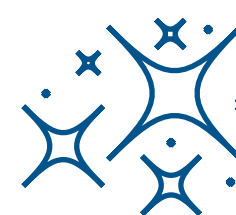
ICONIC FACADE

The iconic facade of the building is a striking feature that sets it apart from others in downtown. The majority of the facade is made of glass, giving it a modern and sleek appearance. Complemented by the use of metal, the facade not only looks visually stunning but also embodies the essence of the Rove brand.



FULLY FURNISHED UNITS

Each unit in our project will be delivered fully furnished, ensuring convenience and comfort for our residents. Detailed lists of the furnishings provided will be available for each unit, making the move-in process hassle-free and effortless.



THE FOREVER-YOUNG SPIRIT OF ROVE COMES ALIVE AT ROVE HOME DOWNTOWN.

Heartwarming interior design, life-enhancing amenities, uplifting coworking areas to create and connect, cosy spaces to unwind and art installations celebrate the brand's vibrant spirit every day.



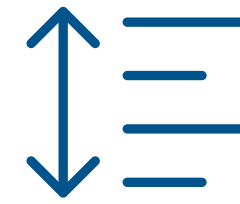
THE LOCATION OF THE PROJECT / DOWNTOWN AND BK DISTRICT

The Downtown proximity will enrich the lifestyle experience of the brand - as it is steps away from Dubai Mall and Dubai Opera. The Boulevard comes to you.

SPECIAL FEATURES

Rove Home Downtown sets a new benchmark in modern living with its array of innovative and highly functional special features that are setting new benchmarks for the market.

These avant-garde features redefine contemporary living, making Rove Home Downtown an unparalleled and coveted address in the heart of Downtown.



GENEROUS CEILING HEIGHT

The apartments at Rove feature soaring ceilings, measuring an impressive 3 meters in height, providing a spacious and airy ambiance.



SEAMLESS INDOOR-OUTDOOR INTEGRATION

With the same floor finish inside and outside the apartments, residents can enjoy a seamless transition that extends the living space to the outdoors, creating a harmonious and connected atmosphere.



DISAPPEARING WALLS

This iconic feature is a special one. It doubles the space once the doors disappear into the wall, and provides privacy in a functional, elegant design.



UNIQUE BI-FOLD GLASS DOORS

A standout feature exclusive to our project in Dubai, the bi-fold glass doors leading to the balconies bring in an abundance of natural light and offer unparalleled panoramic views of the cityscape.

PRESENTED BY

OCTA

ON BEHALF OF

IRTH