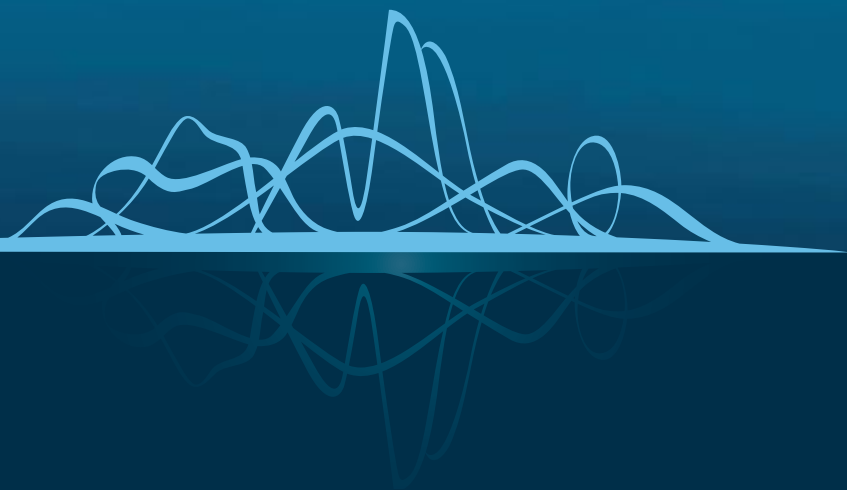


al naseem
part of al bandar
floor plans



ALRAHABEACH
Abu Dhabi

the ultimate **waterfront** city
alrahabeach.ae

al naseem residences - A

2 bedroom apartment
ground floor - plot 001



type 2Z

total plot area		103.0 sqm
balcony area		48.0 sqm
total		151.0 sqm
living	(7.1m x 5.1m)	33.0 sqm
kitchen	(3.1m x 2.8m)	12.0 sqm
master bedroom	(4.6m x 3.3m)	14.0 sqm
ensuite	(2.5m x 2.5m)	6.0 sqm
bedroom 2	(3.4m x 3.3m)	12.0 sqm
bathroom	(3.1m x 2.0m)	6.0 sqm
powder room	(2.2m x 1.3m)	3.0 sqm



al naseem residences - A

al naseem residences - A

1 bedroom apartment
ground floor - plot 002



type 1B

total plot area		65.0 sqm
balcony area		42.0 sqm
total		107.0 sqm
living	(6.4m x 3.3m)	20.0 sqm
kitchen	(3.2m x 2.5m)	8.0 sqm
master bedroom	(4.4m x 3.1m)	17.0 sqm
ensuite	(3.3m x 2.3m)	7.0 sqm
powder room	(2.0m x 1.2m)	2.0 sqm



al naseem residences - A

2 bedroom apartment
ground floor - plot 003



type 2C

total plot area		94.0 sqm
balcony area		47.0 sqm
total		141.0 sqm
living	(4.6m x 4.5m)	21.0 sqm
kitchen	(3.2m x 2.6m)	8.0 sqm
master bedroom	(3.9m x 3.6m)	20.0 sqm
ensuite	(2.7m x 2.1m)	6.0 sqm
bedroom 2	(4.2m x 3.7m)	16.0 sqm
bathroom	(2.3m x 2.1m)	6.0 sqm



al naseem residences - A

2 bedroom apartment
ground floor - plot 005



type 2AA

total plot area		113.0 sqm
balcony area		70.0 sqm
total		183.0 sqm
living	(8.1m x 5.2m)	43.0 sqm
kitchen	(4.2m x 2.7m)	11.0 sqm
master bedroom	(3.8m x 3.2m)	18.0 sqm
ensuite	(2.8m x 2.4m)	6.0 sqm
bedroom 2	(4.0m x 3.7m)	15.0 sqm
bathroom	(2.3m x 1.8m)	4.0 sqm



al naseem residences - A

1 bedroom apartment
ground floor - plot 011



type 1M

total plot area		70.0 sqm
balcony area		94.0 sqm
total		164.0 sqm
living / dining	(6.4m x 4.2m)	23.0 sqm
kitchen	(3.3m x 2.5m)	8.0 sqm
master bedroom	(3.7m x 3.5m)	19.0 sqm
ensuite	(3.2m x 2.2m)	6.0 sqm
powder room	(1.9m x 1.2m)	2.0 sqm



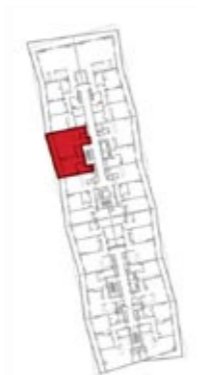
al naseem residences - A

1 bedroom apartment
2nd floor - plot 205



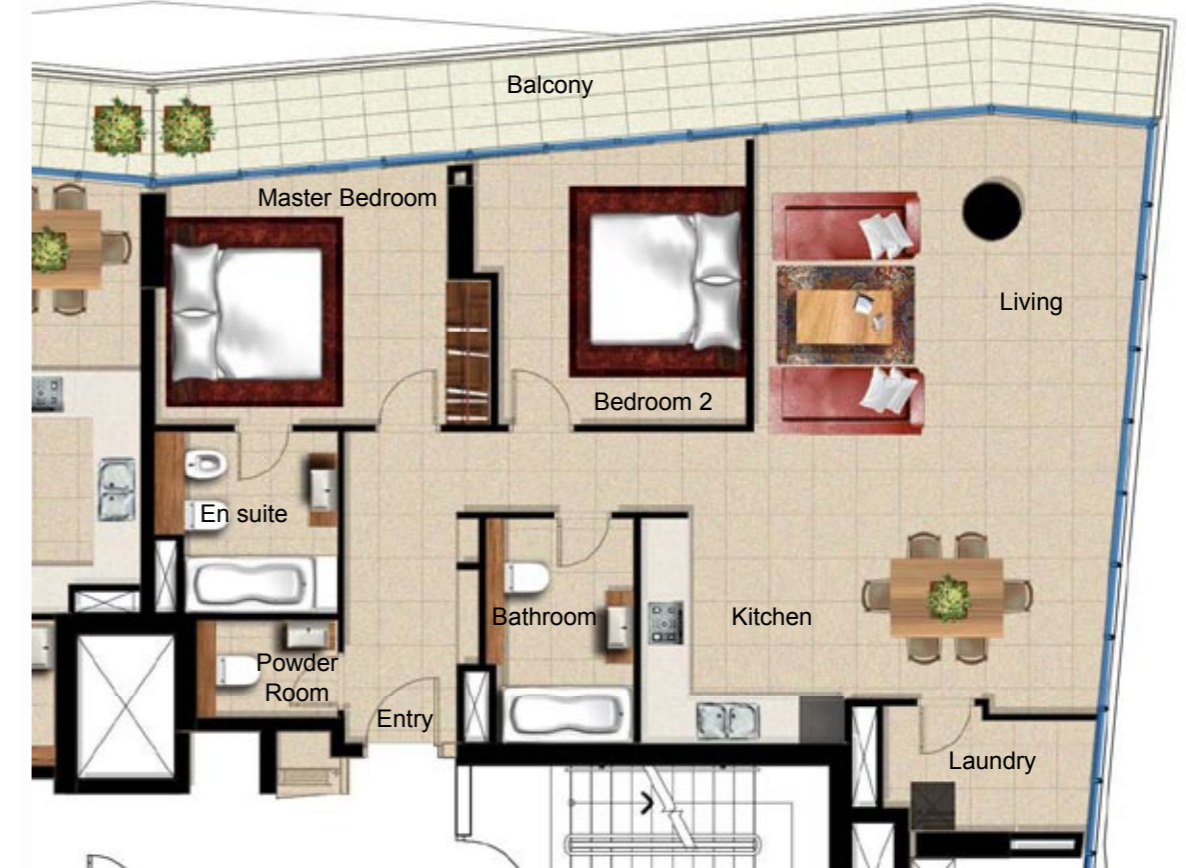
type 1H

total plot area		77.0 sqm
balcony area		13.0 sqm
total		90.0 sqm
living	(6.5m x 4.7m)	25.0 sqm
kitchen	(3.7m x 2.8m)	17.0 sqm
master bedroom	(4.4m x 3.4m)	19.0 sqm
ensuite	(2.4m x 2.1m)	7.0 sqm
powder room	(2.0m x 1.2m)	2.0 sqm



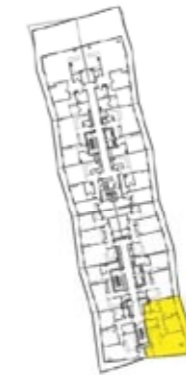
al naseem residences - A

2 bedroom apartment
5th floor - plot 512



type 1M

total plot area		112.0 sqm
balcony area		20.0 sqm
total		132.0 sqm
living	(8.0m x 5.2m)	38.0 sqm
kitchen	(3.1m x 2.8m)	9.0 sqm
master bedroom	(3.9m x 3.4m)	15.0 sqm
ensuite	(2.5m x 2.5m)	6.0 sqm
bedroom 2	(3.8m x 3.4m)	14.0 sqm
bathroom	(3.1m x 2.0m)	6.0 sqm
powder room	(1.9m x 1.3m)	3.0 sqm



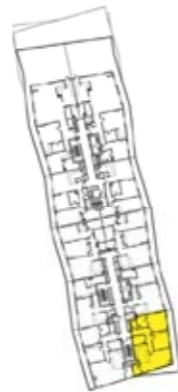
al naseem residences - A

2 bedroom apartment
6th floor - plot 610



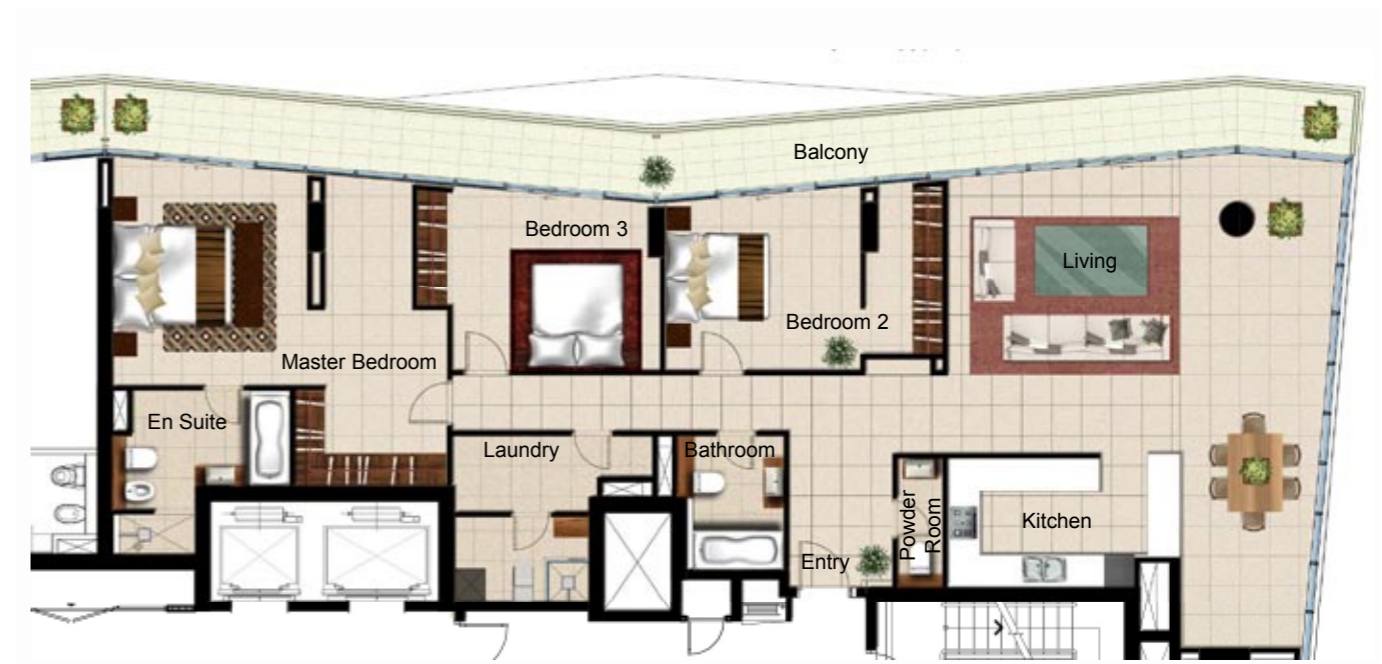
type 2P

total plot area		104.0 sqm
balcony area		28.0 sqm
total		132.0 sqm
living	(7.7m x 5.1m)	27.0 sqm
kitchen	(3.2m x 2.8m)	9.0 sqm
master bedroom	(4.6m x 4.1m)	17.5 sqm
ensuite	(2.5m x 2.5m)	6.0 sqm
bedroom 2	(3.9m x 3.7m)	14.0 sqm
bathroom	(3.1m x 2.0m)	6.0 sqm
powder room	(1.9m x 1.3m)	3.0 sqm



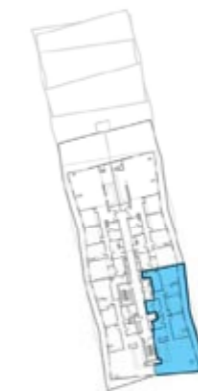
al naseem residences - A

3 bedroom apartment
9th floor - plot 904



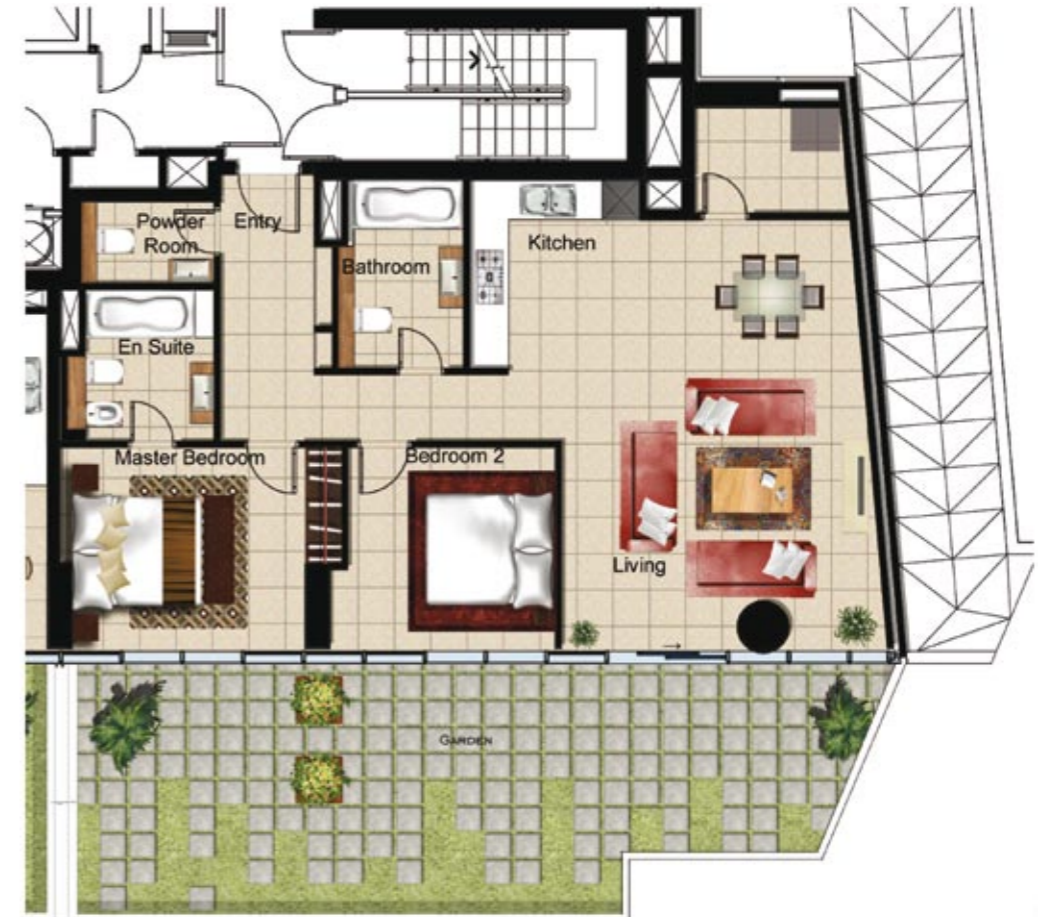
type 30

total plot area		187.0 sqm
balcony area		36.0 sqm
total		223.0 sqm
lounge	(7.6m x 5.8m)	55.0 sqm
kitchen	(4.6m x 2.5m)	11.0 sqm
master bedroom	(4.4m x 3.8m)	32.0 sqm
ensuite	(3.5m x 3.2m)	9.0 sqm
bedroom 2	(3.9m x 3.6m)	19.0 sqm
bedroom 3	(4.8m x 3.5m)	16.0 sqm
bathroom	(2.6m x 2.1m)	5.0 sqm
powder room	(2.5m x 0.9m)	2.0 sqm



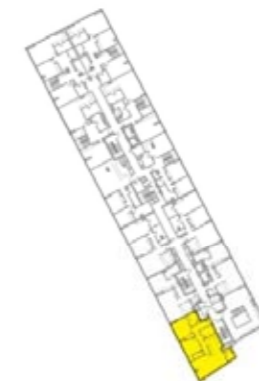
al naseem residences - B

2 bedroom apartment
ground floor - plot 001



type 2Z

total plot area		105.0 sqm
balcony area		61.0 sqm
total		166.0 sqm
living	(7.1m x 5.1m)	33.0 sqm
kitchen	(3.1m x 2.8m)	12.0 sqm
master bedroom	(4.6m x 3.3m)	14.0 sqm
ensuite	(2.5m x 2.5m)	6.0 sqm
bedroom 2	(3.4m x 3.3m)	12.0 sqm
bathroom	(3.1m x 2.0m)	6.0 sqm
powder room	(2.2m x 1.3m)	3.0 sqm



al naseem residences - B

al naseem residences - B

2 bedroom apartment
ground floor - plot 003



al naseem residences - building B

2 bedroom waterside duplex apartment
ground floor and pontoon floor - plot 005



pontoon floor plan:
entry level

upper floor plan:
ground level

type 2C

total plot area		94.0 sqm
balcony area		53.0 sqm
total		147.0 sqm
living	(4.6m x 4.5m)	21.0 sqm
kitchen	(3.2m x 2.6m)	8.0 sqm
master bedroom	(3.9m x 3.6m)	20.0 sqm
ensuite	(2.7m x 2.1m)	6.0 sqm
bedroom 2	(4.2m x 3.7m)	16.0 sqm
bathroom	(2.3m x 2.1m)	6.0 sqm



type 2B

total plot area		180.0 sqm
balcony area		27.0 sqm
total		207.0 sqm
living	(7.1m x 5.2m)	55.0 sqm
kitchen	(5.1m x 1.9m)	12.0 sqm
master bedroom	(4.1m x 3.2m)	30.0 sqm
ensuite	(2.5m x 2.5m)	6.5 sqm
bedroom 2	(5.2m x 4.7m)	28.0 sqm
ensuite	(2.6m x 2.2m)	5.5 sqm
powder room	(2.7m x 1.2m)	3.0 sqm



al naseem residences - B

2 bedroom waterside duplex apartment
ground floor and pontoon floor - plot 008



pontoon floor plan:
entry level



upper floor plan:
ground level

al naseem residences - B

3 bedroom waterside duplex apartment
ground floor and pontoon floor - plot 009



pontoon floor plan:
entry level



upper floor plan:
ground level

type 2A

total plot area		171.0 sqm
balcony area		48.0 sqm
total		219.0 sqm
living	(10.5m x 6.3m)	55.0 sqm
kitchen	(4.9m x 2.2m)	11.0 sqm
master bedroom	(5.1m x 4.7m)	27.5 sqm
ensuite	(2.7m x 2.1m)	6.0 sqm
bedroom 2	(5.7m x 4.7m)	24.0 sqm
bathroom	(3.1m x 2.7m)	8.0 sqm
powder room	(2.1m x 1.3m)	3.0 sqm



type 3W

total plot area		202.0 sqm
balcony area		93.0 sqm
total		295.0 sqm
living / dining	(7.5m x 4.5m)	33.5 sqm
kitchen	(4.3m x 2.2m)	10.0 sqm
master bedroom	(7.1m x 4.1m)	39.0 sqm
ensuite	(2.6m x 2.4m)	7.0 sqm
bedroom 2	(5.2m x 4.2m)	23.0 sqm
ensuite	(3.5m x 1.8m)	7.0 sqm
bedroom 3	(4.2m x 3.5m)	23.0 sqm
ensuite	(3.5m x 2.0m)	7.0 sqm
powder room	(2.0m x 1.2m)	2.5 sqm



al naseem residences - B

2 bedroom apartment
ground floor - plot 010



type 2AB

total plot area		94.0 sqm
total		94.0 sqm
living	(4.6m x 4.4m)	21.0 sqm
kitchen	(3.2m x 2.6m)	8.0 sqm
master bedroom	(3.9m x 3.6m)	20.0 sqm
ensuite	(2.7m x 2.1m)	6.0 sqm
bedroom 2	(3.7m x 3.6m)	16.0 sqm
bathroom	(3.2m x 2.1m)	6.0 sqm



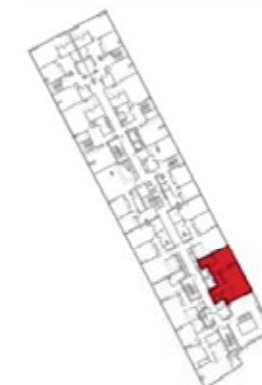
al naseem residences - B

1 bedroom apartment
ground floor - plot 011



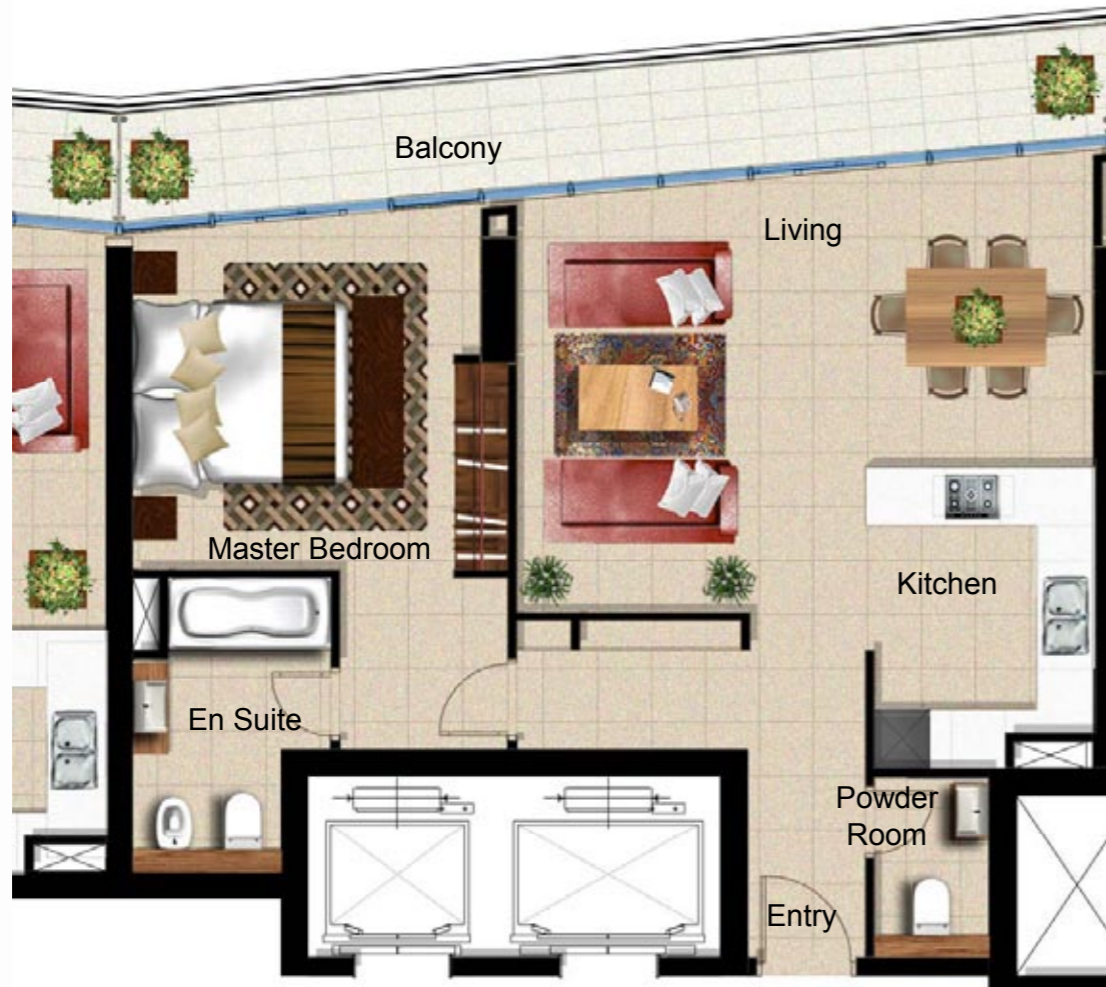
type 1K

total plot area		70.0 sqm
total		70.0 sqm
living / dining	(6.4m x 4.2m)	23.0 sqm
kitchen	(3.3m x 2.5m)	8.0 sqm
master bedroom	(3.7m x 3.5m)	19.0 sqm
ensuite	(3.2m x 2.2m)	6.0 sqm
powder room	(1.9m x 1.2m)	2.0 sqm



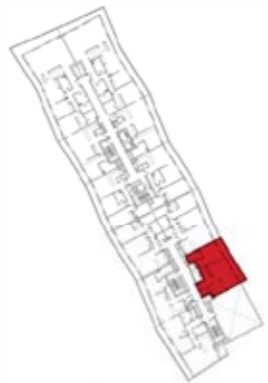
al naseem residences - B

1 bedroom apartment
1st floor - plot 111



type 1J

total plot area		75.0 sqm
balcony area		17.0 sqm
total		92.0 sqm
living	(6.4m x 4.8m)	27.0 sqm
kitchen	(3.3m x 2.5m)	8.0 sqm
master bedroom	(3.9m x 3.5m)	19.0 sqm
ensuite	(3.2m x 2.2m)	6.0 sqm
powder room	(2.0m x 1.2m)	2.5 sqm



al naseem residences - B

1 bedroom apartment
2nd floor - plot 205



type 1H

total plot area		75.4 sqm
balcony area		14.2 sqm
total		89.6 sqm
living	(6.6m x 4.0m)	29.1 sqm
kitchen	(3.5m x 2.8m)	8.0 sqm
master bedroom	(3.8m x 3.0m)	18.2 sqm
ensuite	(2.5m x 2.2m)	6.9 sqm
powder room	(1.8m x 1.1m)	2.0 sqm



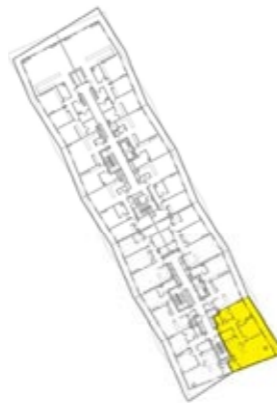
al naseem residences - B

2 bedroom apartment
2nd floor - plot 212



type 2Q

total plot area		112.0 sqm
balcony area		20.0 sqm
total		132.0 sqm
living	(8.0m x 5.2m)	38.0 sqm
kitchen	(3.1m x 2.8m)	9.0 sqm
master bedroom	(3.9m x 3.4m)	15.0 sqm
ensuite	(2.5m x 2.5m)	6.0 sqm
bedroom 2	(3.8m x 3.4m)	14.0 sqm
bathroom	(3.1m x 2.0m)	6.0 sqm
powder room	(1.9m x 1.3m)	3.0 sqm



al naseem residences - B

2 bedroom apartment
3rd floor - plot 312



type 2P

total plot area		104.0 sqm
balcony area		28.0 sqm
total		132.0 sqm
living	(7.7m x 5.1m)	27.0 sqm
kitchen	(3.2m x 2.8m)	9.0 sqm
master bedroom	(4.6m x 4.1m)	17.5 sqm
ensuite	(2.5m x 2.5m)	6.0 sqm
bedroom 2	(3.9m x 3.7m)	14.0 sqm
bathroom	(3.1m x 2.0m)	6.0 sqm
powder room	(1.9m x 1.3m)	3.0 sqm



al naseem residences - B

3 bedroom apartment
5th floor - plot 506



type 3J

total plot area		182.0 sqm
balcony area		56.0 sqm
total		238.0 sqm
living	(9.3m x 5.6m)	61.0 sqm
kitchen	(4.9m x 2.3m)	11.0 sqm
master bedroom	(4.2m x 4.1m)	25.0 sqm
ensuite	(2.9m x 2.6m)	7.5 sqm
bedroom 2	(3.8m x 4.5m)	17.0 sqm
bedroom 3	(4.4m x 3.4m)	14.6 sqm
bathroom	(3.5m x 2.0m)	7.0 sqm
powder room	(2.9m x 1.0m)	3.0 sqm



al naseem residences - B

2 bedroom apartment
7th floor - plot 706



type 2S

total plot area		163.0 sqm
balcony area		123.0 sqm
total		286.0 sqm
living	(8.1m x 5.9m)	50.0 sqm
kitchen	(5.0m x 3.7m)	18.5 sqm
master bedroom	(5.3m x 4.2m)	26.5 sqm
ensuite	(3.2m x 2.3m)	8.0 sqm
bedroom 2	(4.3m x 3.7m)	20.0 sqm
ensuite	(3.6m x 2.5m)	8.0 sqm
powder room	(3.0m x 1.3m)	4.0 sqm



al naseem residences - B

3 bedroom apartment
8th floor - plot 806



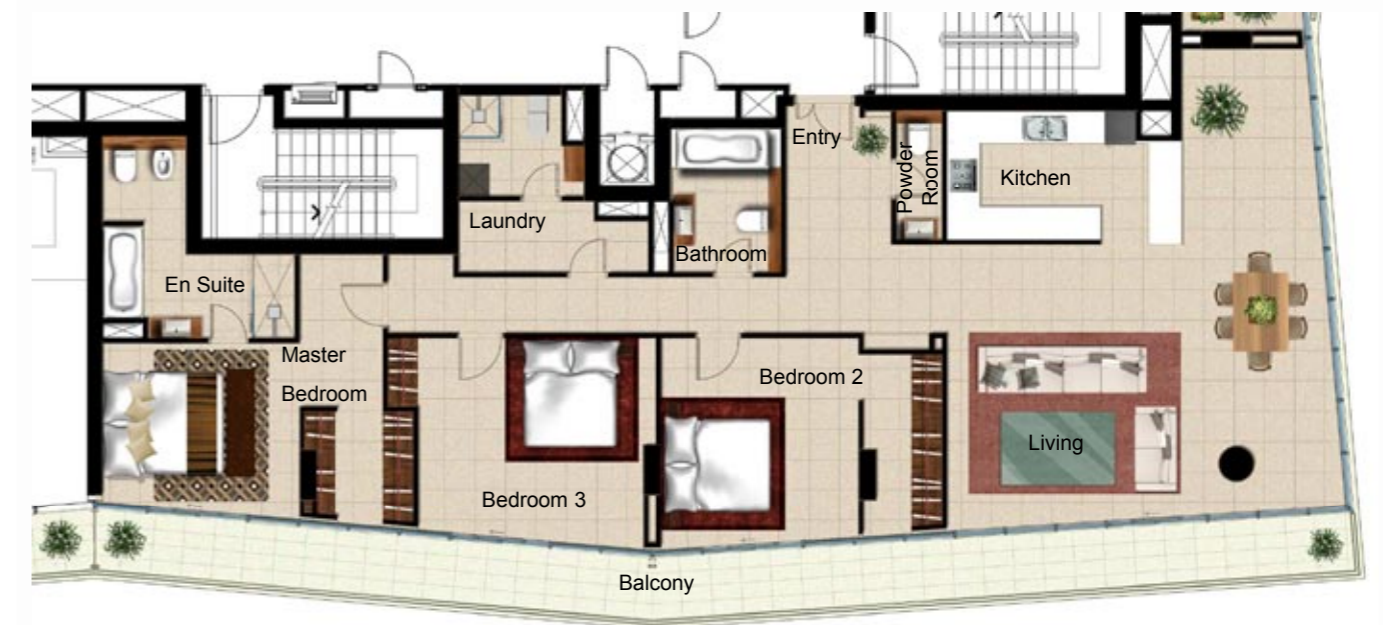
type 30

total plot area		187.0 sqm
balcony area		36.0 sqm
total		223.0 sqm
lounge	(7.6m x 5.8m)	55.0 sqm
kitchen	(4.6m x 2.5m)	11.0 sqm
master bedroom	(4.4m x 3.8m)	32.0 sqm
ensuite	(3.5m x 3.2m)	9.0 sqm
bedroom 2	(3.9m x 3.6m)	19.0 sqm
bedroom 3	(4.8m x 3.5m)	16.0 sqm
bathroom	(2.6m x 2.1m)	5.0 sqm
powder room	(2.5m x 0.9m)	2.0 sqm



al naseem residences - B

3 bedroom apartment
9th floor - plot 901



type 3P

total plot area		183.0 sqm
balcony area		35.0 sqm
total		218.0 sqm
living	(7.6m x 5.4m)	52.0 sqm
kitchen	(4.6m x 2.5m)	11.0 sqm
master bedroom	(3.8m x 3.3m)	22.0 sqm
ensuite	(3.9m x 3.7m)	10.0 sqm
bedroom 2	(4.0m x 3.9m)	21.0 sqm
bedroom 3	(4.7m x 3.9m)	19.0 sqm
ensuite	(2.8m x 2.2m)	6.0 sqm
powder room	(2.5m x 0.9m)	2.0 sqm



al naseem residences - B

3 bedroom apartment
9th floor - plot 906



type 3S

total plot area		180.0 sqm
balcony area		43.0 sqm
total		223.0 sqm
living	(6.5m x 5.4m)	44.0 sqm
kitchen	(4.6m x 2.5m)	11.0 sqm
master bedroom	(3.9m x 3.8m)	30.0 sqm
ensuite	(3.5m x 3.2m)	9.0 sqm
bedroom 2	(4.2m x 3.9m)	22.0 sqm
bedroom 3	(4.6m x 4.2m)	17.0 sqm
bathroom	(2.6m x 2.1m)	6.0 sqm
powder room	(2.5m x 0.9m)	2.0 sqm



al naseem residences - B

3 bedroom apartment
10th floor - plot 1001



type 3L

total plot area		173.0 sqm
balcony area		45.0 sqm
total		218.0 sqm
living	(7.7m x 5.1m)	37.0 sqm
kitchen	(4.6m x 2.5m)	11.0 sqm
master bedroom	(3.8m x 3.8m)	24.0 sqm
ensuite	(3.9m x 3.7m)	10.0 sqm
bedroom 2	(3.9m x 3.4m)	18.0 sqm
bedroom 3	(3.4m x 4.7m)	16.0 sqm
bathroom	(2.8m x 2.2m)	6.0 sqm
powder room	(2.5m x 0.9m)	2.0 sqm



al naseem residences - B

3 bedroom apartment
10th floor - plot 1004



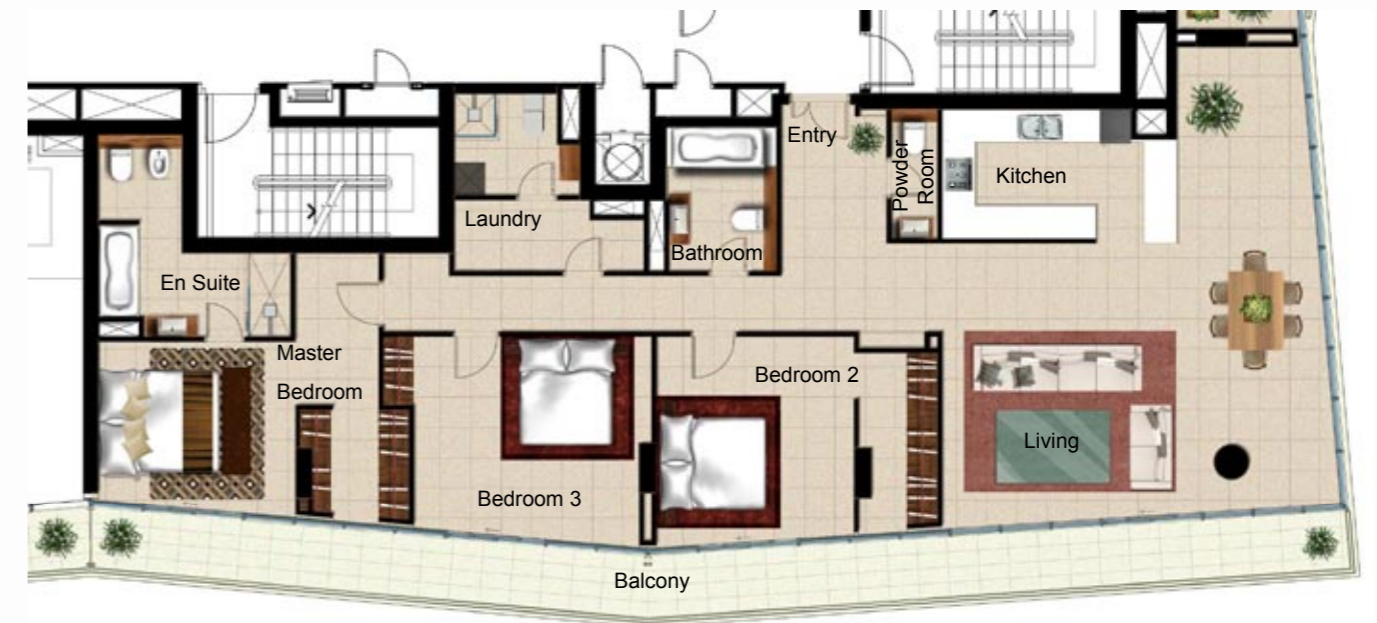
type 30

total plot area		187.0 sqm
balcony area		36.0 sqm
total		223.0 sqm
lounge	(7.6m x 5.8m)	55.0 sqm
kitchen	(4.6m x 2.5m)	11.0 sqm
master bedroom	(4.4m x 3.8m)	32.0 sqm
ensuite	(3.5m x 3.2m)	9.0 sqm
bedroom 2	(3.9m x 3.6m)	19.0 sqm
bedroom 3	(4.8m x 3.5m)	16.0 sqm
bathroom	(2.6m x 2.1m)	5.0 sqm
powder room	(2.5m x 0.9m)	2.0 sqm



al naseem residences - B

3 bedroom apartment
11th floor - plot 1101



type 3P

total plot area		176.0 sqm
balcony area		34.0 sqm
total		210.0 sqm
living	(7.6m x 5.4m)	52.0 sqm
kitchen	(4.6m x 2.5m)	11.0 sqm
master bedroom	(3.8m x 3.3m)	22.0 sqm
ensuite	(3.9m x 3.7m)	10.0 sqm
bedroom 2	(4.0m x 3.9m)	21.0 sqm
bedroom 3	(4.7m x 3.9m)	19.0 sqm
bathroom	(2.8m x 2.2m)	6.0 sqm
powder room	(2.5m x 0.9m)	2.0 sqm



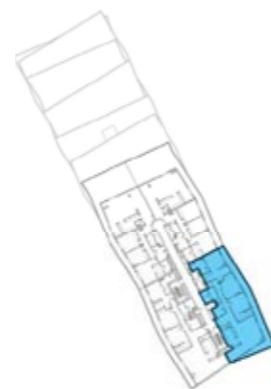
al naseem residences - B

3 bedroom apartment
11th floor - plot 1104



type 3S

total plot area		180.0 sqm
balcony area		43.0 sqm
total		223.0 sqm
living	(6.5m x 5.4m)	44.0 sqm
kitchen	(4.6m x 2.5m)	11.0 sqm
master bedroom	(3.9m x 3.8m)	30.0 sqm
ensuite	(3.5m x 3.2m)	9.0 sqm
bedroom 2	(4.2m x 3.9m)	22.0 sqm
bedroom 3	(4.6m x 4.2m)	17.0 sqm
bathroom	(2.6m x 2.1m)	6.0 sqm
powder room	(2.5m x 0.9m)	2.0 sqm



al naseem residences - C

al naseem residences - C

4 bedroom waterside duplex apartment
ground floor and pontoon floor - plot 001



pontoon floor plan:
entry level

upper floor plan:
ground level

type 4A

total plot area		315.0 sqm
balcony area		63.0 sqm
total		378.0 sqm
living	(13.7m x 5.6m)	86.0 sqm
kitchen	(5.9m x 2.8m)	17.0 sqm
master bedroom	(7.4m x 6.0m)	51.0 sqm
ensuite	(3.7m x 2.2m)	9.0 sqm
bedroom 2	(3.8m x 3.1m)	25.0 sqm
ensuite	(3.9m x 2.3m)	7.0 sqm
bedroom 3	(4.7m x 3.7m)	23.0 sqm
ensuite	(3.7m x 2.3m)	7.0 sqm
bedroom 4	(4.7m x 4.4m)	20.0 sqm
bathroom	(3.9m x 2.1m)	8.0 sqm
powder room	(6.5m x 3.3m)	3.5 sqm



al naseem residences - C

3 bedroom waterside duplex apartment
ground floor and pontoon floor - plot 006



pontoon floor plan:
entry level

upper floor plan:
ground level

type 3E

total plot area		233.0 sqm
balcony area		83.0 sqm
total		316.0 sqm
living/dining	(8.0m x 5.0m)	36.0 sqm
kitchen	(4.7m x 2.8m)	13.0 sqm
master bedroom	(5.1m x 4.8m)	34.5 sqm
ensuite	(4.7m x 2.0m)	9.0 sqm
bedroom 2	(4.6m x 4.4m)	23.0 sqm
ensuite	(2.3m x 1.4m)	11.0 sqm
bedroom 3	(4.4m x 4.2m)	18.0 sqm
ensuite	(2.7m x 1.8m)	5.0 sqm
powder room	(2.2m x 2.2m)	4.5 sqm



al naseem residences - C

2 bedroom waterside duplex apartment
ground floor and pontoon floor - plot 007

pontoon floor plan:
entry level



upper floor plan:
ground level



type 2A

total plot area		173.0 sqm
balcony area		44.0 sqm
total		217.0 sqm
living/dining	(10.5m x 6.3m)	55.0 sqm
kitchen	(4.9m x 2.2m)	11.0 sqm
master bedroom	(5.1m x 4.7m)	27.5 sqm
ensuite	(2.7m x 2.1m)	6.0 sqm
bedroom 2	(5.7m x 4.7m)	24.0 sqm
bathroom	(3.1m x 2.7m)	6.0 sqm
powder room	(2.1m x 1.3m)	3.0 sqm



al naseem residences - C

3 bedroom waterside duplex apartment
ground floor and pontoon floor - plot 008

pontoon floor plan:
entry level



upper floor plan:
ground level



type 3F

total plot area		220.0 sqm
balcony area		58.0 sqm
total		278.0 sqm
living/dining	(7.5m x 4.5m)	33.5 sqm
kitchen	(4.3m x 2.2m)	10.0 sqm
master bedroom	(7.1m x 4.1m)	39.0 sqm
ensuite	(2.6m x 2.4m)	7.0 sqm
bedroom 2	(5.2m x 4.2m)	23.0 sqm
ensuite	(3.5m x 1.8m)	7.0 sqm
bedroom 3	(4.2m x 3.5m)	23.0 sqm
ensuite	(3.5m x 2.0m)	7.0 sqm
powder room	(2.0m x 1.2m)	2.5 sqm



al naseem residences - C

3 bedroom waterside duplex apartment
ground floor and pontoon floor - plot 009

pontoon floor plan:
entry level



upper floor plan:
ground level



type 3G

total plot area		183.0 sqm
balcony area		46.0 sqm
total		229.0 sqm
living	(4.6m x 4.3m)	20.0 sqm
kitchen	(3.4m x 2.8m)	9.0 sqm
master bedroom	(4.9m x 4.5m)	28.0 sqm
ensuite	(2.5m x 2.4m)	6.0 sqm
bedroom 2	(4.3m x 3.8m)	23.0 sqm
ensuite	(2.4m x 2.3m)	7.0 sqm
bedroom 3	(4.7m x 3.5m)	22.0 sqm
ensuite	(3.2m x 1.8m)	5.0 sqm
powder room	(1.6m x 1.5m)	2.0 sqm



al naseem residences - C

3 bedroom apartment
2nd floor - plot 207



type 3K

total plot area		182.0 sqm
balcony area		48.0 sqm
total		230.0 sqm
living/dining	(9.3m x 5.6m)	59.0 sqm
kitchen	(4.9m x 2.4m)	24.6 sqm
master bedroom	(4.2m x 4.1m)	25.0 sqm
ensuite	(2.9m x 2.6m)	7.5 sqm
bedroom 2	(4.5m x 3.2m)	17.0 sqm
bedroom 3	(3.3m x 3.9m)	15.0 sqm
bathroom	(3.5m x 2.0m)	7.0 sqm
powder room	(2.9m x 1.0m)	3.0 sqm



al naseem residences - C

1 bedroom apartment
4th floor - plot 405



type 1H

total plot area		77.0 sqm
balcony area		15.0 sqm
total		92.0 sqm
living	(6.5m x 4.7m)	25.0 sqm
kitchen	(3.7m x 2.8m)	17.0 sqm
master bedroom	(4.4m x 3.4m)	19.0 sqm
ensuite	(2.4m x 2.1m)	7.0 sqm
powder room	(2.0m x 1.2m)	2.0 sqm



al naseem residences - C

2 bedroom apartment
5th floor - plot 504



type 2H

total plot area		90.0 sqm
balcony area		17.0 sqm
total		107.0 sqm
living	(4.5m x 4.3m)	20.0 sqm
kitchen	(3.6m x 3.0m)	8.0 sqm
master bedroom	(4.3m x 3.2m)	18.0 sqm
ensuite	(3.9m x 2.3m)	8.0 sqm
bedroom 2	(4.0m x 3.0m)	15.0 sqm
ensuite	(2.8m x 2.0m)	5.0 sqm
powder room	(2.0m x 1.0m)	2.0 sqm



al naseem residences - C

1 bedroom apartment
5th floor - plot 505



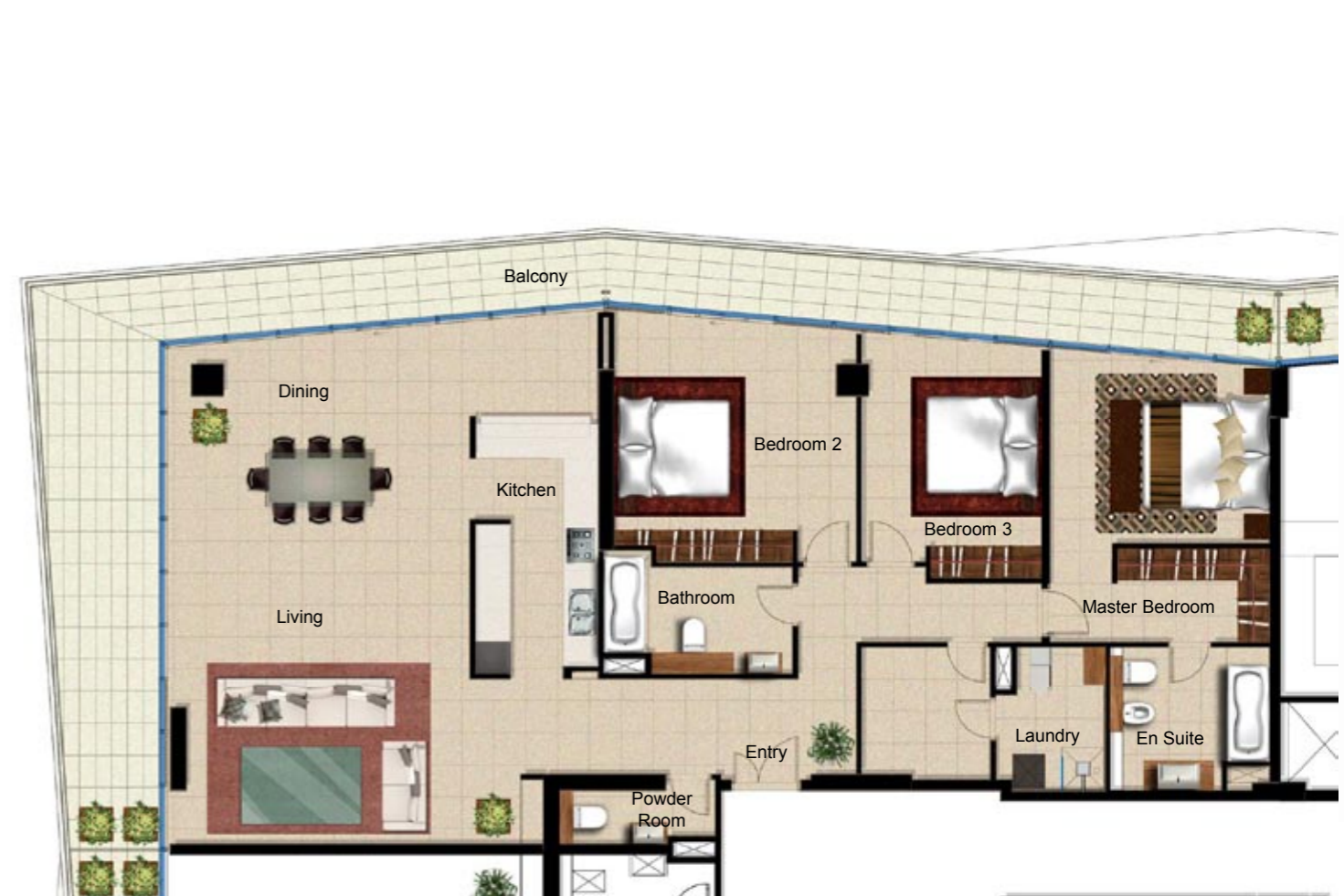
type 1D

total plot area		75.0 sqm
balcony area		17.0 sqm
total		92.0 sqm
living	(6.6m x 4.2m)	26.0 sqm
kitchen	(3.7m x 2.8m)	8.0 sqm
master bedroom	(4.4m x 3.8m)	21.0 sqm
ensuite	(3.2m x 2.5m)	7.0 sqm
powder room	(2.0m x 1.2m)	2.0 sqm



al naseem residences - C

3 bedroom apartment
5th floor - plot 507



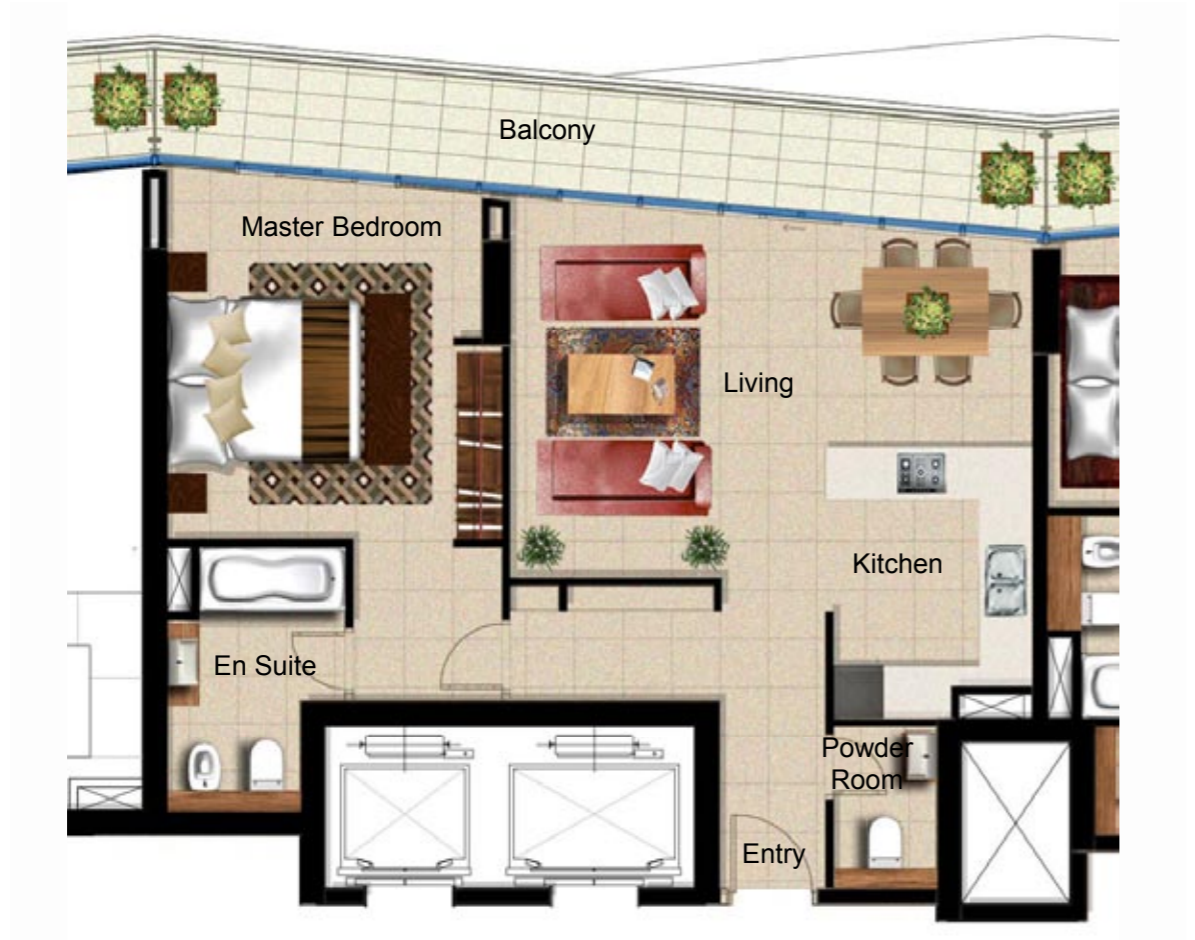
type 3I

total plot area		186.0 sqm
balcony area		56.0 sqm
total		242.0 sqm
living/dining	(9.6m x 5.6m)	64.0 sqm
kitchen	(4.9m x 2.3m)	11.0 sqm
master bedroom	(4.1m x 3.5m)	22.0 sqm
ensuite	(2.9m x 2.9m)	7.5 sqm
bedroom 2	(4.5m x 3.9m)	20.0 sqm
bedroom 3	(3.9m x 3.3m)	15.0 sqm
bathroom	(3.5m x 2.0m)	7.0 sqm
powder room	(2.9m x 1.0m)	3.0 sqm



al naseem residences - C

1 bedroom apartment
5th floor - plot 511



al naseem residences - C

1 bedroom apartment
6th floor - plot 605



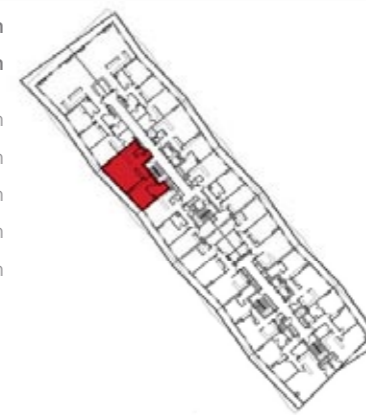
type 1F

total plot area		74.0 sqm
balcony area		16.0 sqm
total		90.0 sqm
living	(6.4m x 4.4m)	24.0 sqm
kitchen	(3.3m x 2.4m)	8.0 sqm
master bedroom	(4.4m x 3.5m)	21.5 sqm
ensuite	(3.2m x 2.3m)	6.0 sqm
powder room	(2.0m x 1.2m)	3.0 sqm



type 1H

total plot area		77.0 sqm
balcony area		15.0 sqm
total		92.0 sqm
living	(6.5m x 4.7m)	25.0 sqm
kitchen	(3.7m x 2.8m)	17.0 sqm
master bedroom	(4.4m x 3.4m)	19.0 sqm
ensuite	(2.4m x 2.1m)	7.0 sqm
powder room	(2.0m x 1.2m)	2.0 sqm



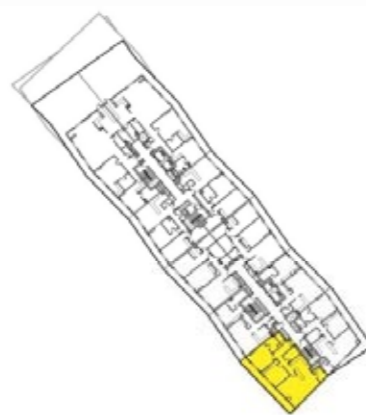
al naseem residences - C

2 bedroom apartment
8th floor - plot 801



type 2K

total plot area		112.0 sqm
balcony area		19.0 sqm
total		131.0 sqm
living	(7.3m x 5.0m)	34.5 sqm
kitchen	(3.1m x 2.8m)	9.0 sqm
master bedroom	(4.1m x 3.8m)	17.5 sqm
ensuite	(2.5m x 2.5m)	6.0 sqm
bedroom 2	(3.8m x 3.4m)	14.0 sqm
bathroom	(3.1m x 2.0m)	6.0 sqm
powder room	(2.2m x 1.3m)	3.0 sqm



al naseem residences - C

2 bedroom apartment
8th floor - plot 806



type 2S

total plot area		163.0 sqm
balcony area		123.0 sqm
total		286.0 sqm
living	(8.1m x 5.9m)	50.0 sqm
kitchen	(5.0m x 3.7m)	18.5 sqm
master bedroom	(5.3m x 4.2m)	26.5 sqm
ensuite	(3.2m x 2.3m)	8.0 sqm
bedroom 2	(4.3m x 3.7m)	20.0 sqm
ensuite	(3.6m x 2.5m)	8.0 sqm
powder room	(3.0m x 1.3m)	4.0 sqm



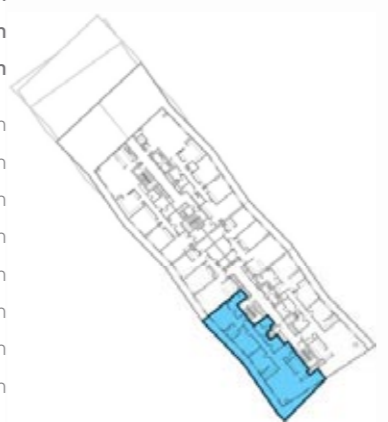
al naseem residences - C

3 bedroom apartment
9th floor - plot 901



type 3L

total plot area		174.0 sqm
balcony area		45.0 sqm
total		219.0 sqm
living	(7.7m x 5.1m)	37.0 sqm
kitchen	(4.6m x 2.5m)	11.0 sqm
master bedroom	(3.8m x 3.8m)	24.0 sqm
ensuite	(3.9m x 3.7m)	10.0 sqm
bedroom 2	(3.9m x 3.4m)	18.0 sqm
bedroom 3	(3.4m x 4.7m)	16.0 sqm
bathroom	(2.8m x 2.2m)	6.0 sqm
powder room	(2.5m x 0.9m)	2.0 sqm



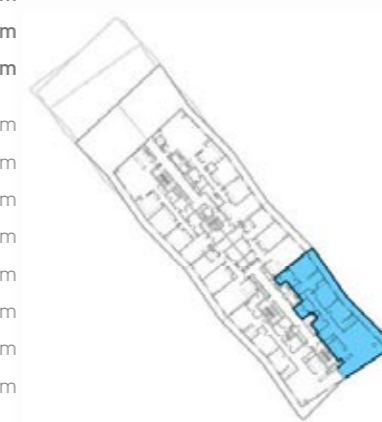
al naseem residences - C

3 bedroom apartment
9th floor - plot 906



type 30

total plot area		187.0 sqm
balcony area		36.0 sqm
total		223.0 sqm
living	(7.6m x 5.8m)	55.0 sqm
kitchen	(4.6m x 2.5m)	11.0 sqm
master bedroom	(4.4m x 3.8m)	32.0 sqm
ensuite	(3.5m x 3.2m)	9.0 sqm
bedroom 2	(3.9m x 3.6m)	19.0 sqm
bedroom 3	(4.8m x 3.5m)	16.0 sqm
bathroom	(2.6m x 2.1m)	5.0 sqm
powder room	(2.5m x 0.9m)	2.0 sqm



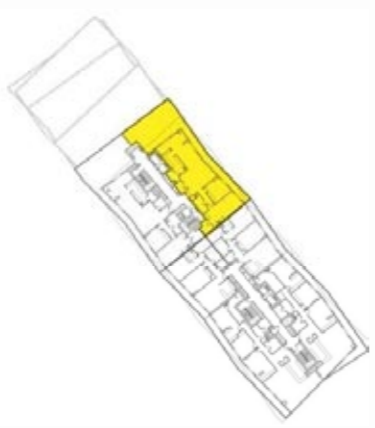
al naseem residences - C

2 bedroom apartment
10th floor - plot 1004



type 2U

total plot area		142.0 sqm
balcony area		89.0 sqm
total		231.0 sqm
living/dining	(11.8m x 3.6m)	48.0 sqm
kitchen	(5.2m x 2.2m)	11.0 sqm
master bedroom	(5.9m x 3.3m)	23.0 sqm
ensuite	(3.9m x 2.3m)	8.0 sqm
bedroom 2	(3.9m x 3.6m)	16.0 sqm
bathroom	(3.2m x 1.8m)	6.0 sqm
powder room	(2.3m x 1.3m)	3.0 sqm



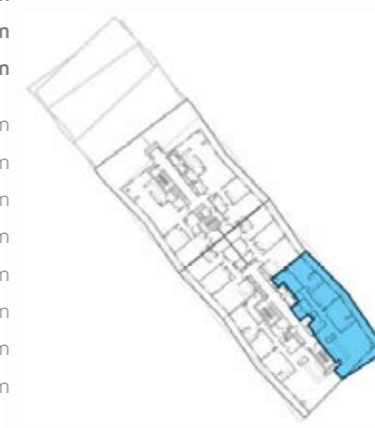
al naseem residences - C

3 bedroom apartment
10th floor - plot 1006



type 3S

total plot area		180.0 sqm
balcony area		43.0 sqm
total		223.0 sqm
living	(6.5m x 5.4m)	44.0 sqm
kitchen	(4.6m x 2.5m)	11.0 sqm
master bedroom	(3.9m x 3.8m)	30.0 sqm
ensuite	(3.5m x 3.2m)	9.0 sqm
bedroom 2	(4.2m x 3.9m)	22.0 sqm
bedroom 3	(4.6m x 4.2m)	17.0 sqm
bathroom	(2.6m x 2.1m)	6.0 sqm
powder room	(2.5m x 0.9m)	2.0 sqm



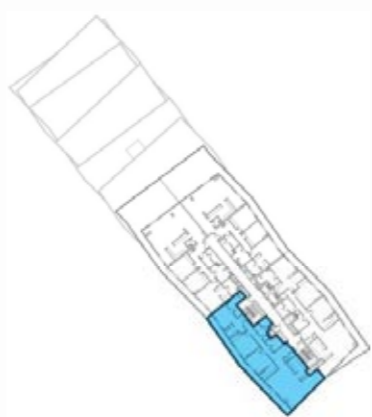
al naseem residences - C

3 bedroom apartment
12th floor - plot 1201



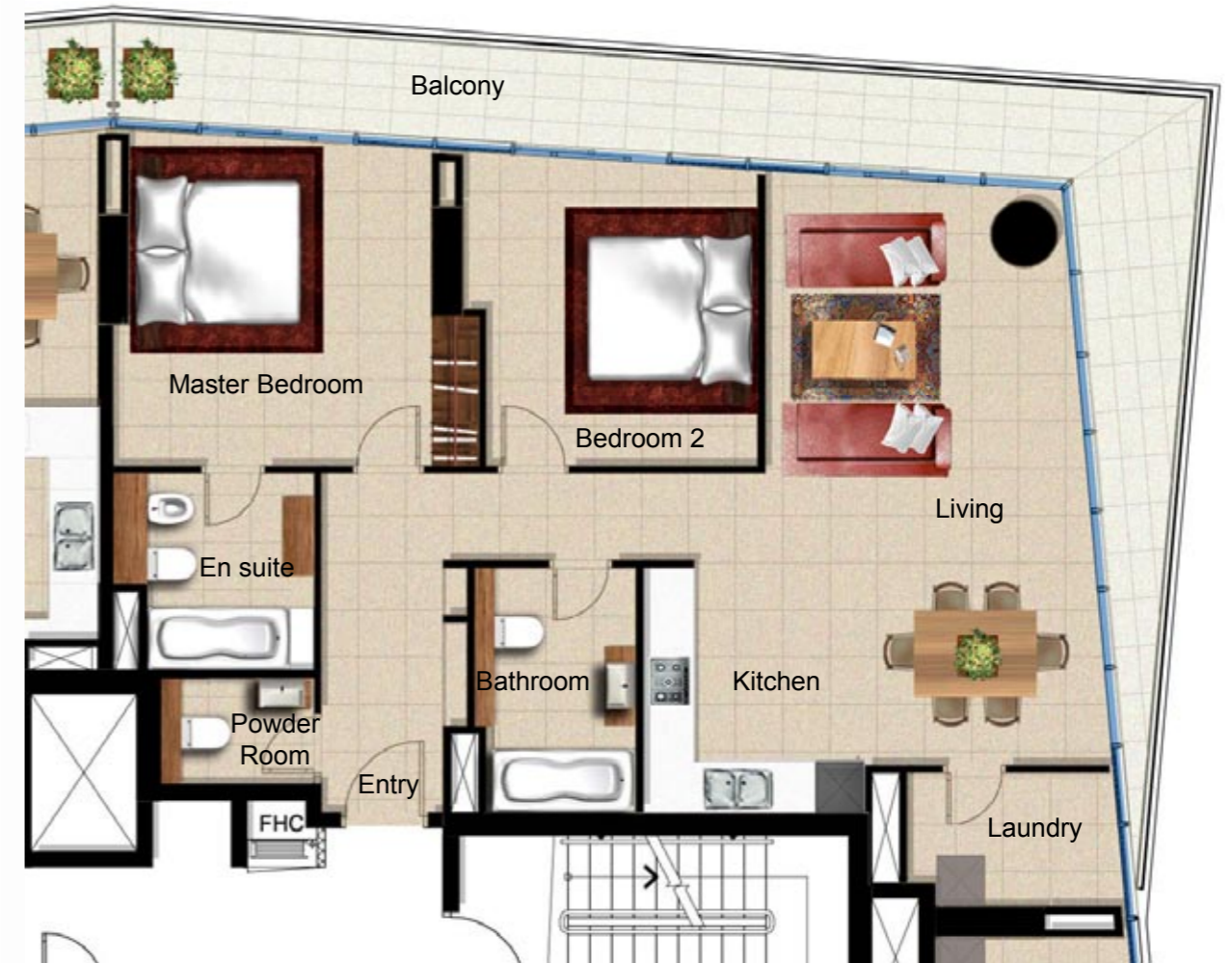
type 3P

total plot area		183.0 sqm
balcony area		34.0 sqm
total		217.0 sqm
living	(7.6m x 5.4m)	52.0 sqm
kitchen	(4.6m x 2.5m)	11.0 sqm
master bedroom	(3.8m x 3.3m)	22.0 sqm
ensuite	(3.9m x 3.7m)	10.0 sqm
bedroom 2	(4.0m x 3.9m)	21.0 sqm
bedroom 3	(4.7m x 3.9m)	19.0 sqm
bathroom	(2.8m x 2.2m)	6.0 sqm
powder room	(2.5m x 0.9m)	2.0 sqm



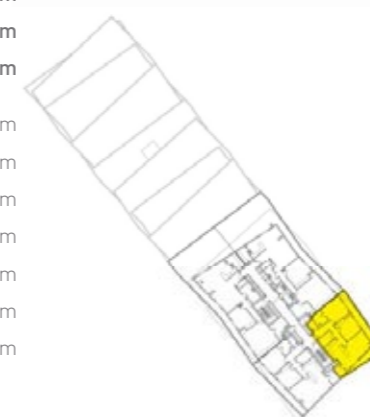
al naseem residences - C

2 bedroom apartment
14th floor - plot 1404



type 2P

total plot area		104.0 sqm
balcony area		28.0 sqm
total		132.0 sqm
living	(7.7m x 5.1m)	27.0 sqm
kitchen	(3.2m x 2.8m)	9.0 sqm
master bedroom	(4.6m x 4.1m)	17.5 sqm
ensuite	(2.5m x 2.5m)	6.0 sqm
bedroom 2	(3.9m x 3.7m)	14.0 sqm
bathroom	(3.1m x 2.0m)	6.0 sqm
powder room	(1.9m x 1.3m)	3.0 sqm



al naseem residences - C

1 bedroom apartment
podium floor - plot p01



type 1L

total plot area		70.0 sqm
balcony area		22.0 sqm
total		92.0 sqm
living/dining	(6.4m x 4.2m)	23.0 sqm
kitchen	(3.3m x 2.5m)	8.0 sqm
master bedroom	(3.7m x 3.5m)	19.0 sqm
ensuite	(3.2m x 2.2m)	6.0 sqm
powder room	(1.9m x 1.2m)	2.0 sqm



ALDAR Properties PJSC, P.O. Box 51133, Abu Dhabi, United Arab Emirates. Tel: +971 2 696 4444, Fax: +971 2 641 7504, Email: info@aldar.com Website: aldar.com

The content of this brochure is for general information purposes only and does not constitute advice. The brochure tries to provide content that is true and accurate as of the date of writing; however, Aldar Properties PJSC (Aldar) gives no assurance or warranty regarding the accuracy, timeliness, or applicability of any of the contents. Prospective customers should not act upon the brochure's content or information without first seeking appropriate professional advice. Aldar assumes no responsibility for information contained in this brochure and disclaims all liability in respect of such information. In addition, none of the brochure's content will form any part of any contract between us or constitute any type of offer by Aldar. Aldar accepts no responsibility for and excludes all liability in connection with use of information or any materials contained in this brochure, including but not limited to any liability for errors, inaccuracies, omissions, or misleading or defamatory statements. The information in this brochure might include opinions or views which, unless expressly stated otherwise, are not necessarily those of Aldar or any associated company or any person in relation to whom they would have any liability or responsibility.