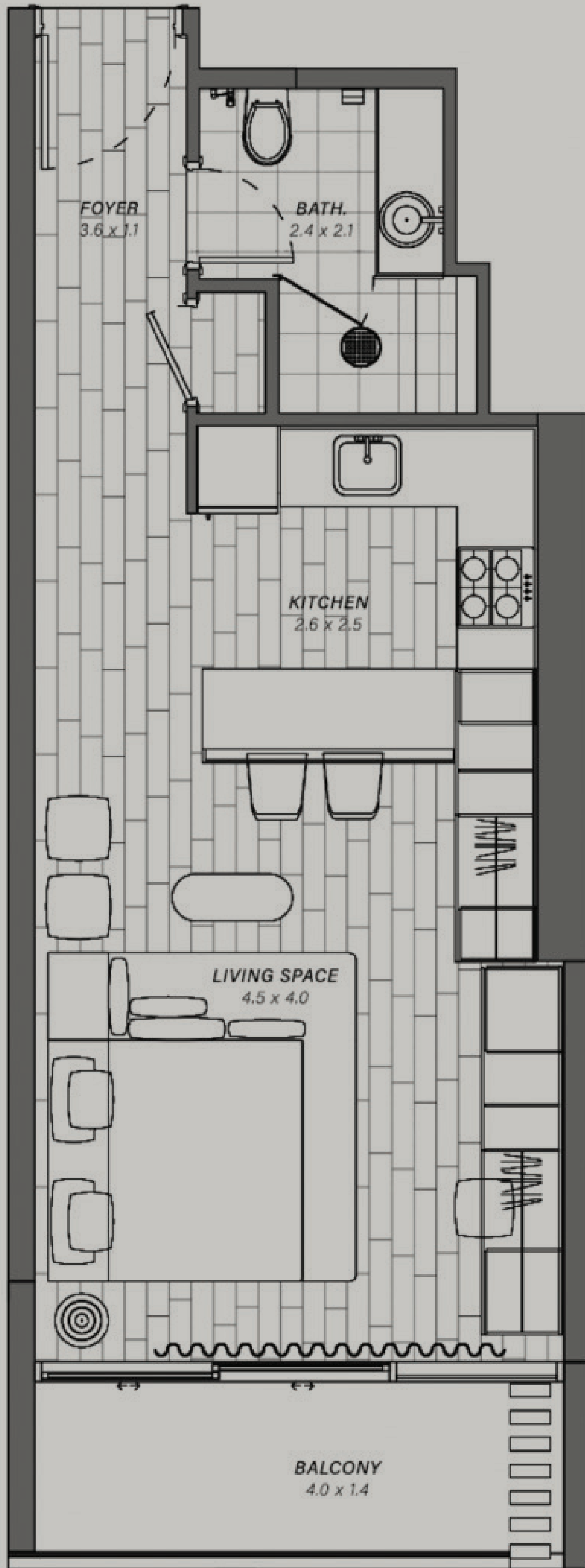


REEM | ELEVEN

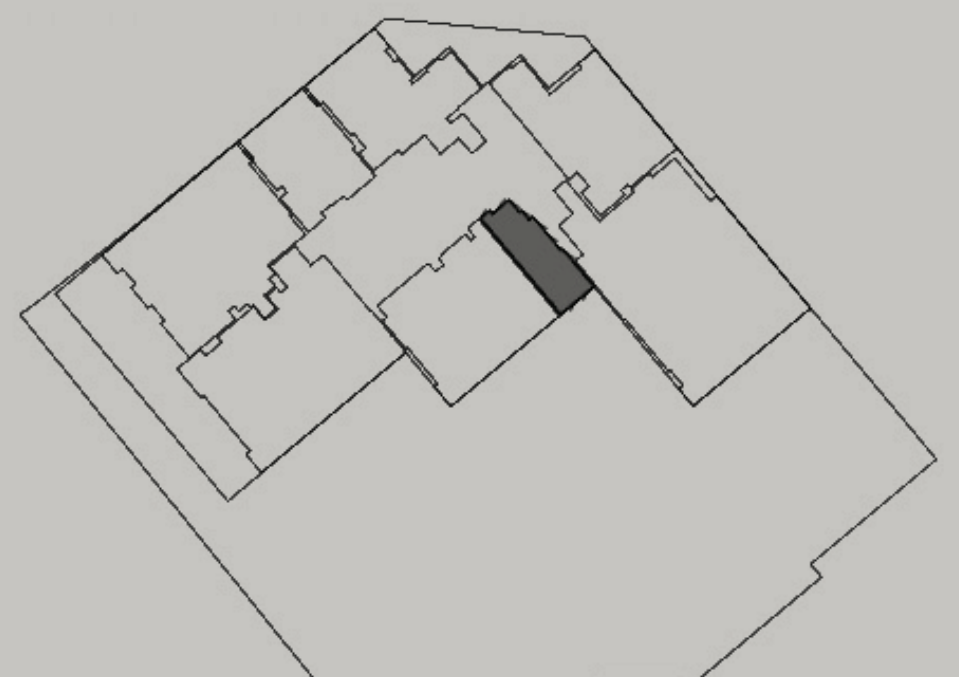
FLOOR PLANS

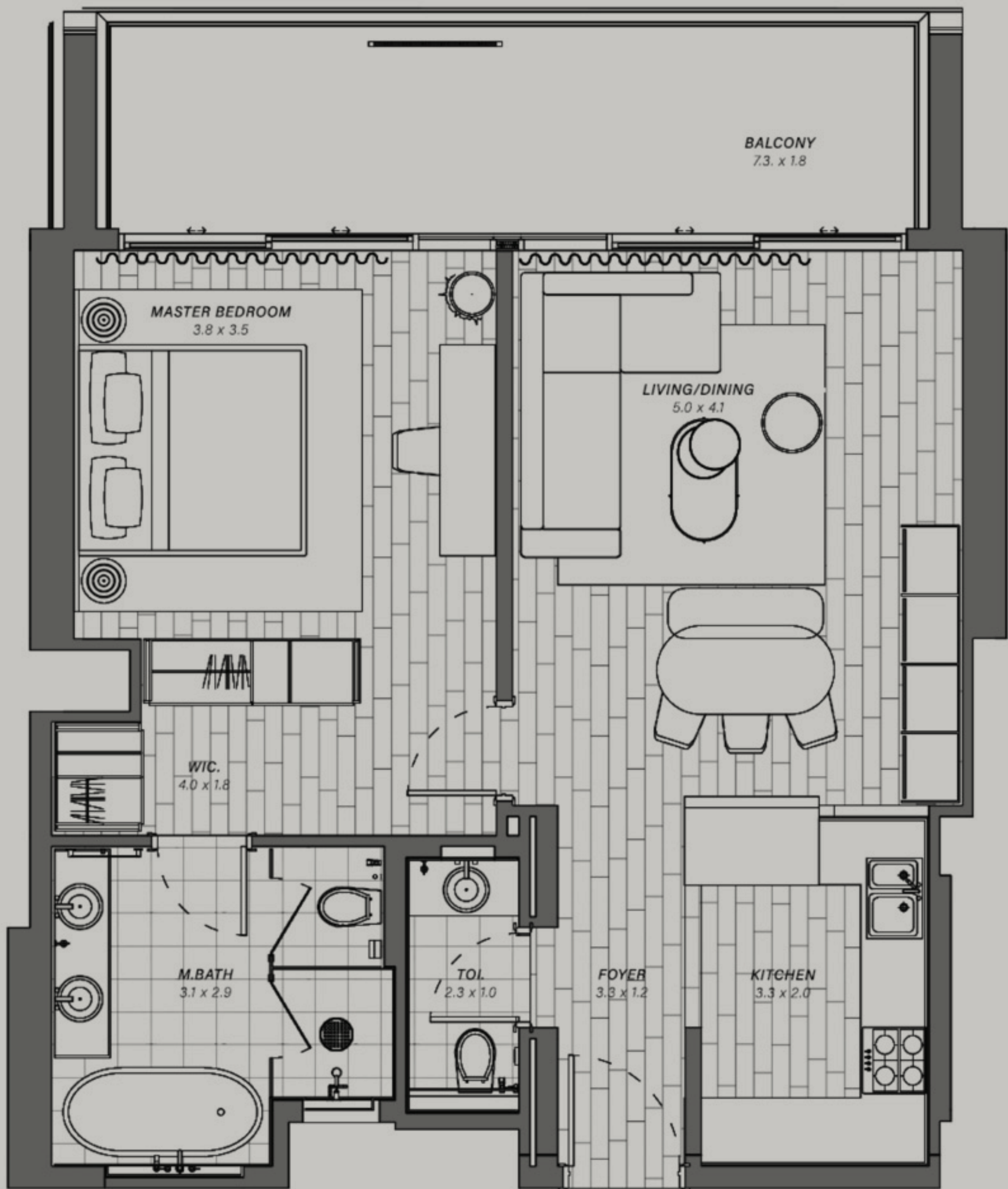


Studio, 1 Bathroom

Unit Area	35.19 Sqm	378.78 Sq.ft
Balcony Area	6.12 Sqm	65.88 Sq.ft
Total Area	41.31 Sqm	444.66 Sq.ft

Unit Number 06

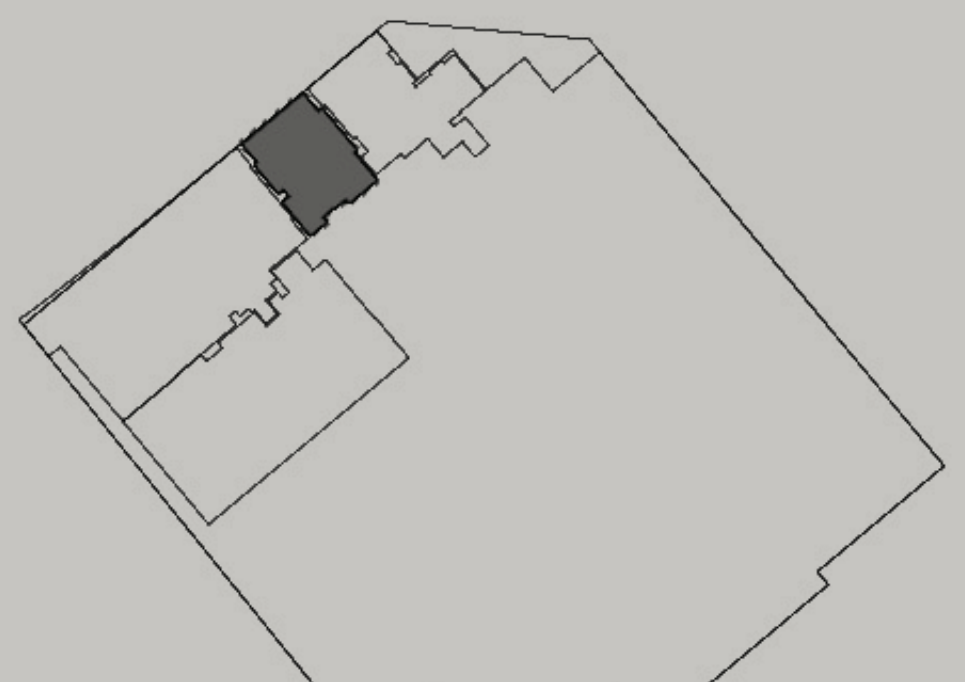


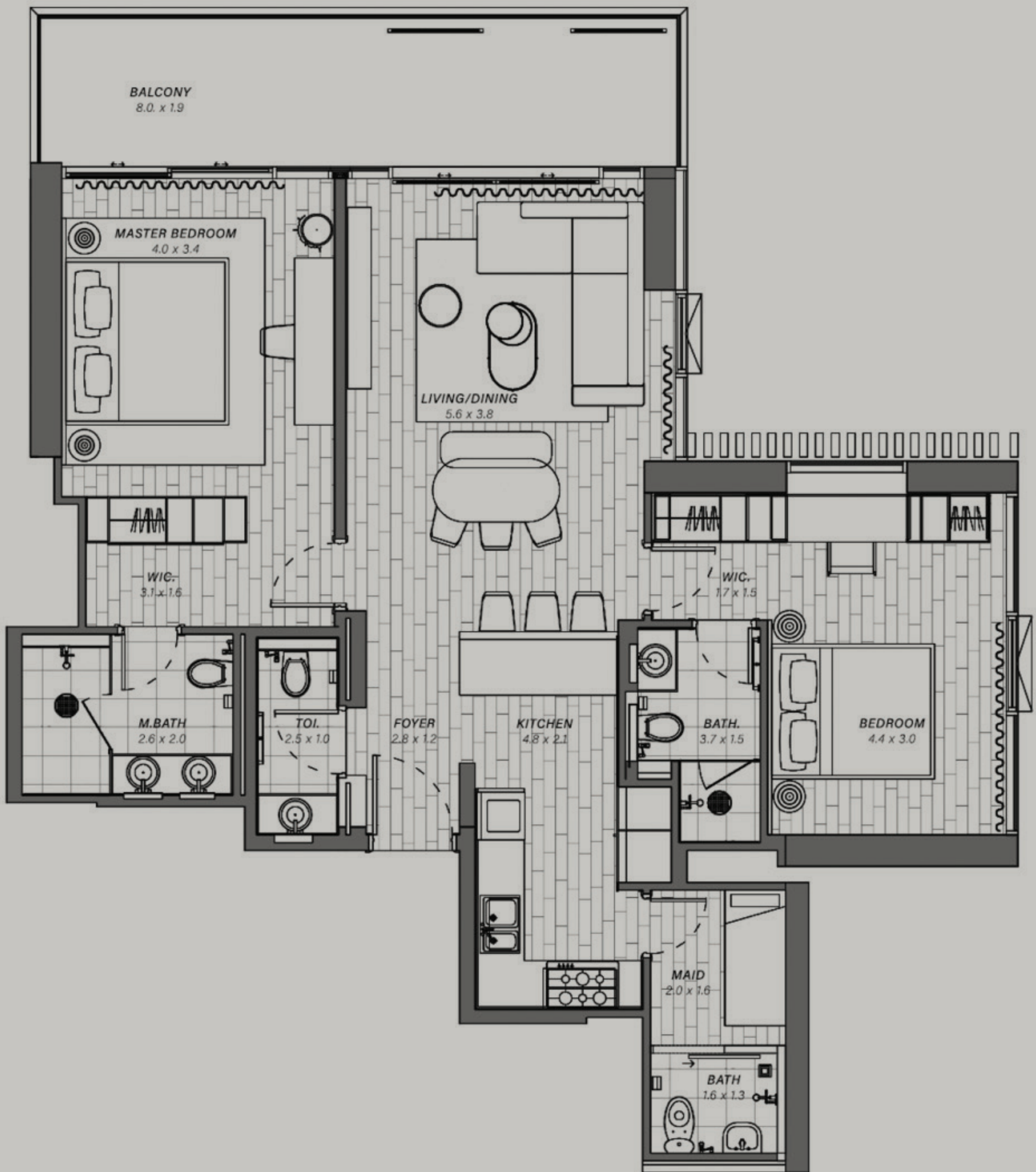


1 Bedroom, 2 Bathrooms

Unit Area	64.00 Sqm	688.89 Sq.ft
Balcony Area	15.52 Sqm	167.06 Sq.ft
Total Area	79.52 Sqm	855.95 Sq.ft

Unit Number 03

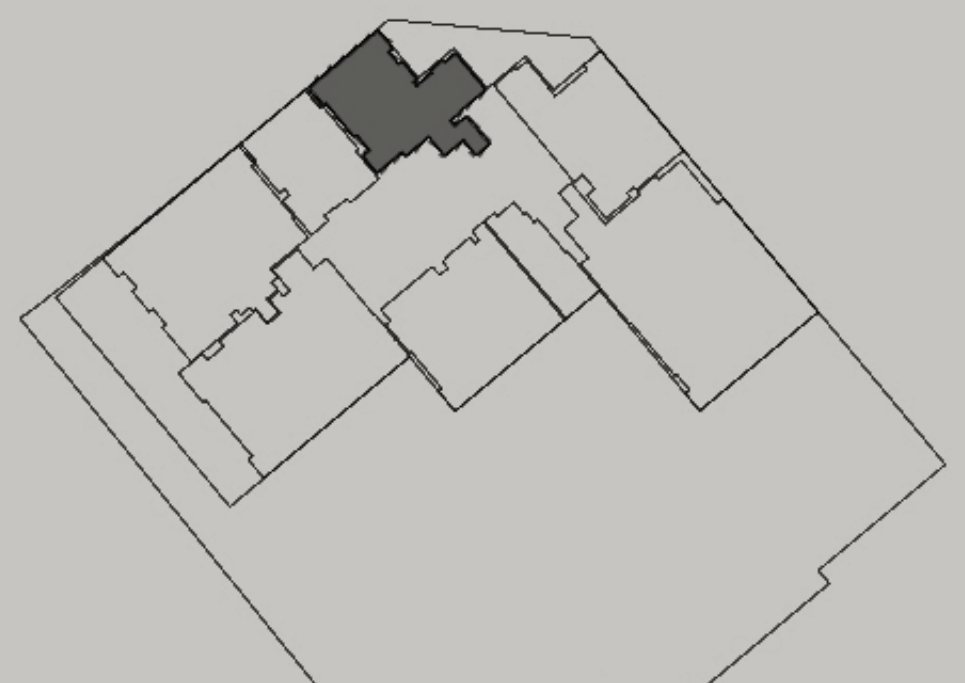


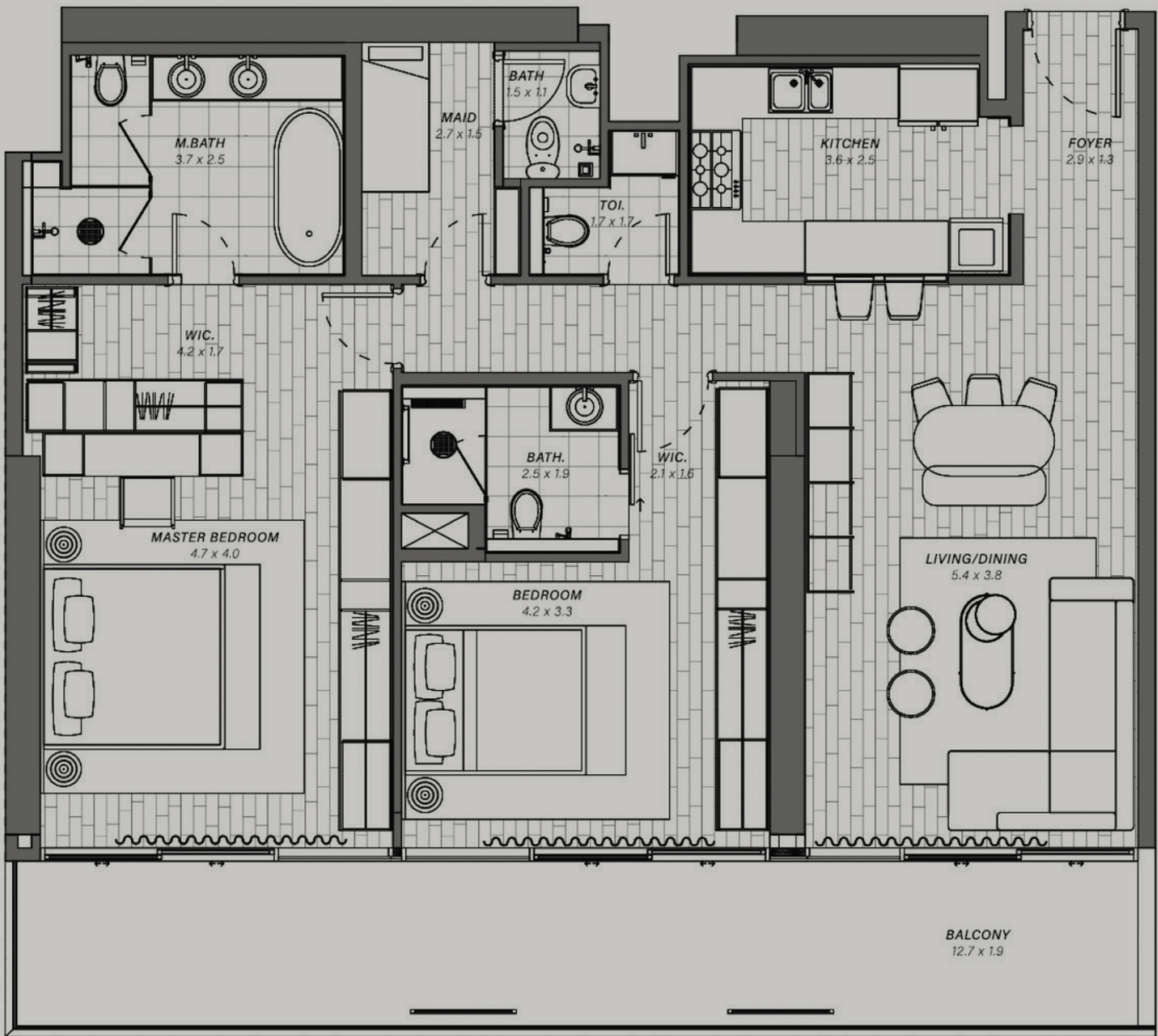


2 Bedroom, 3 Bathrooms

Unit Area	91.28 Sqm	982.53 Sq.ft
Balcony Area	17.77 Sqm	191.27 Sq.ft
Total Area	109.05 Sqm	1173.80 Sq.ft

Unit Number 04

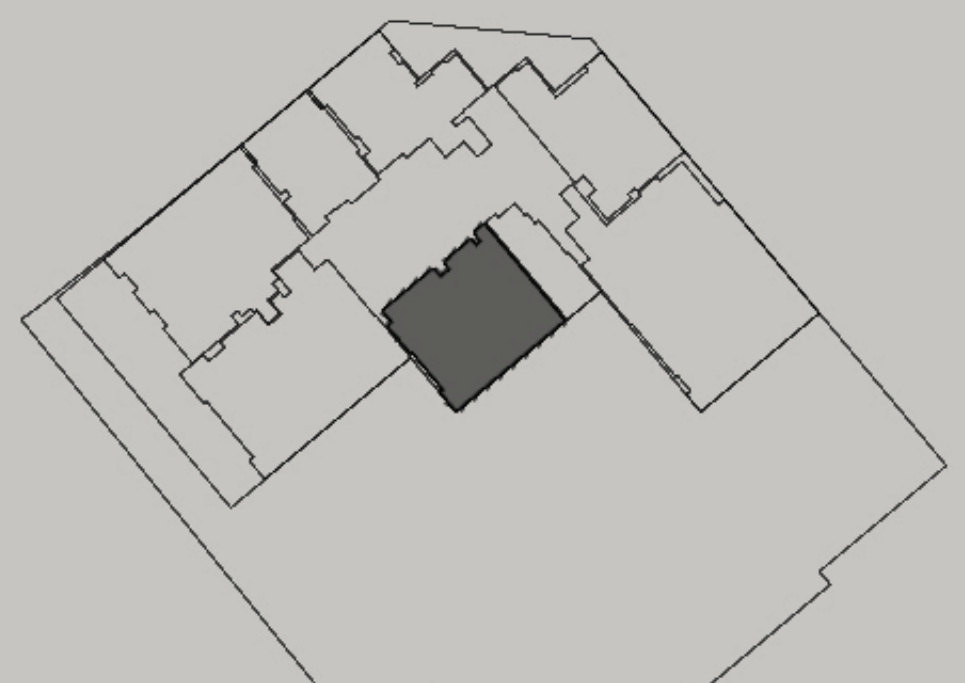


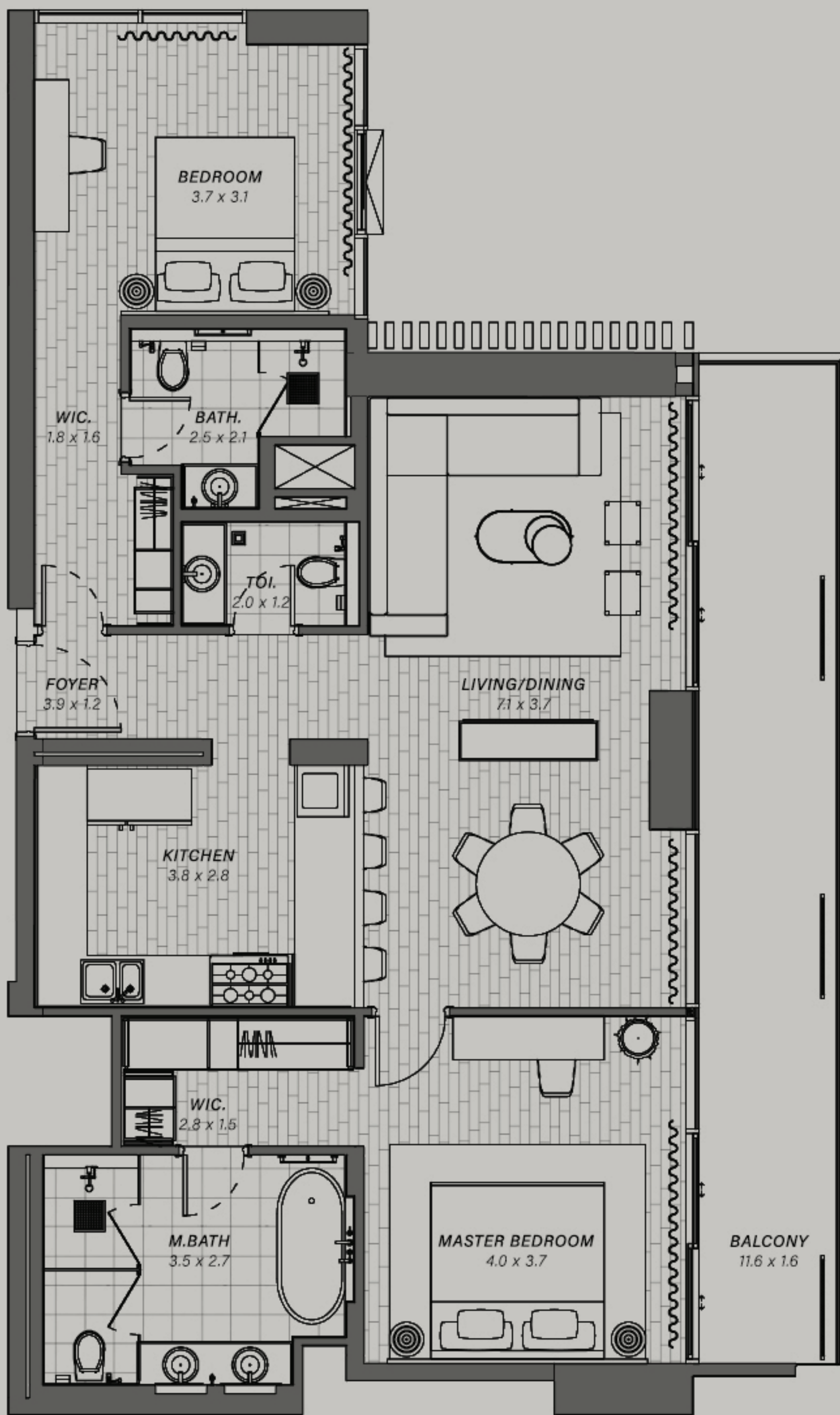


2 Bedroom, 3 Bathrooms

Unit Area	112.05 Sqm	1206.10 Sq.ft
Balcony Area	27.66 Sqm	297.73 Sq.ft
Total Area	139.71 Sqm	1503.83 Sq.ft

Unit Number 05

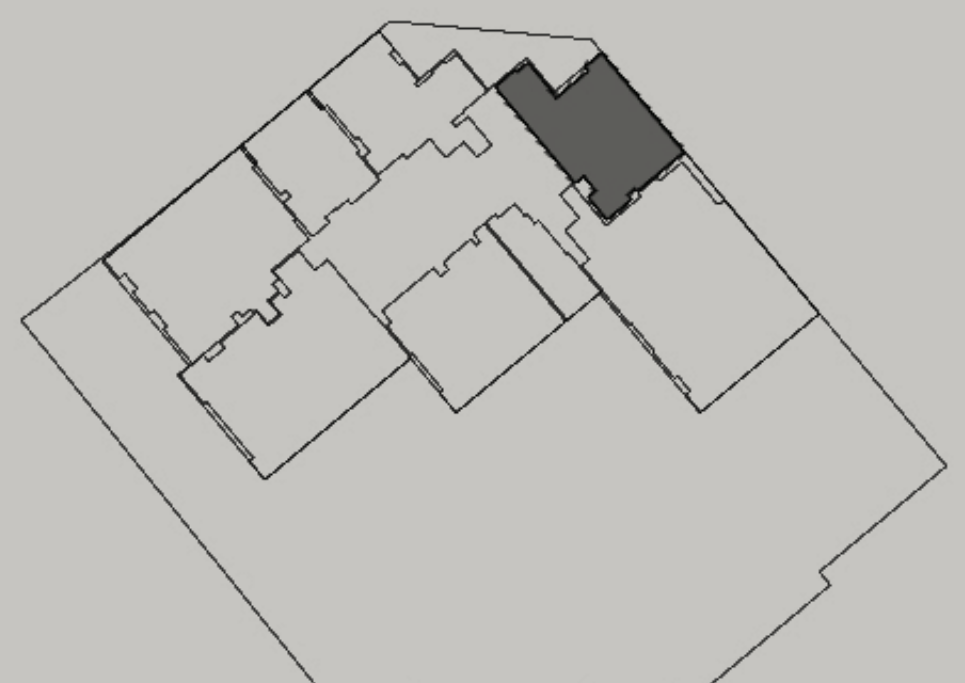


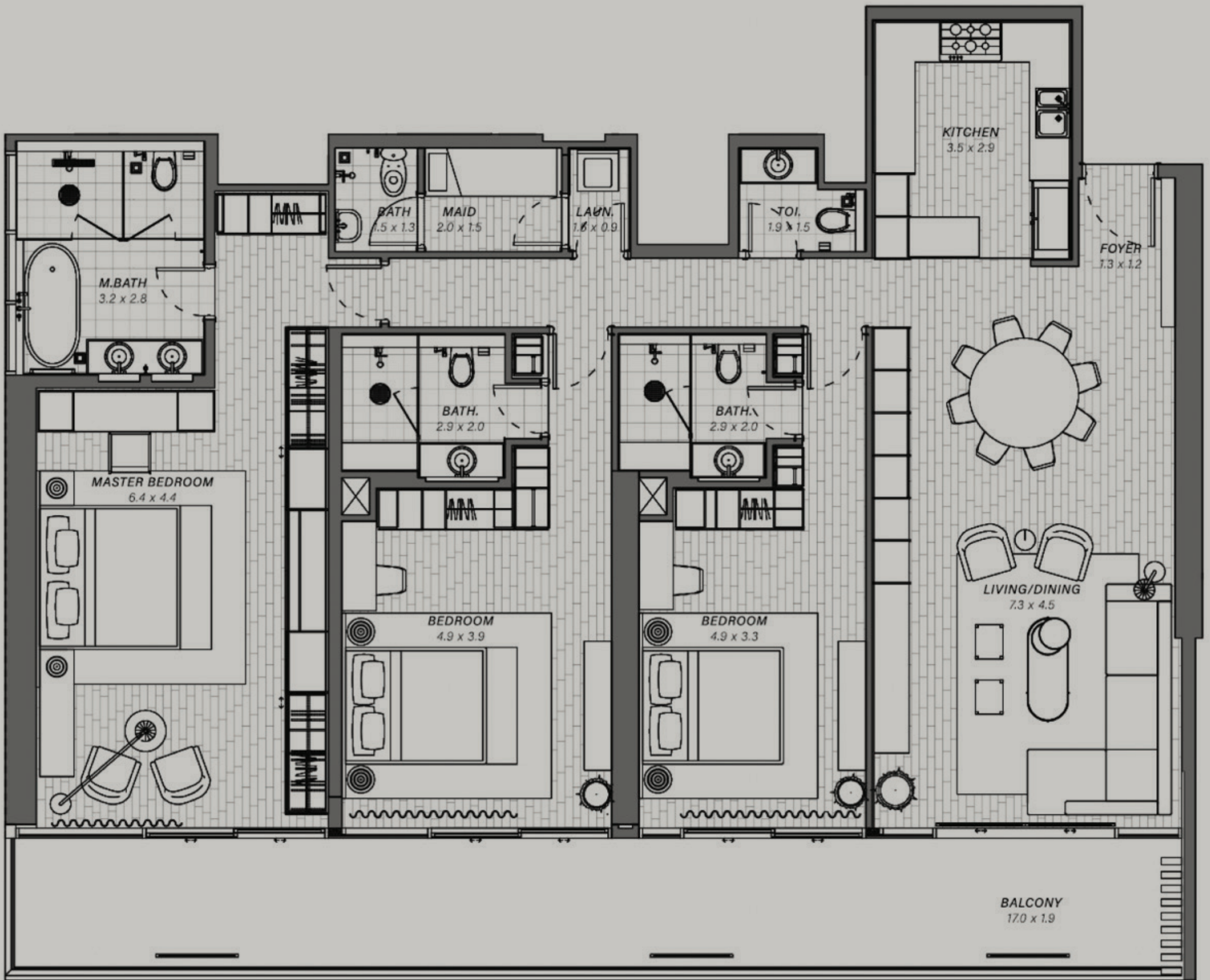


2 Bedroom, 3 Bathrooms

Unit Area	96.65 Sqm	1040.31 Sq.ft
Balcony Area	22.43 Sqm	241.43 Sq.ft
Total Area	119.08 Sqm	1281.74 Sq.ft

Unit Number 07





3 Bedroom, 4 Bathrooms

Unit Area	165.76 Sqm	1784.19 Sq.ft
Balcony Area	36.81 Sqm	396.22 Sq.ft
Total Area	202.57 Sqm	2180.41 Sq.ft

Unit Number 01



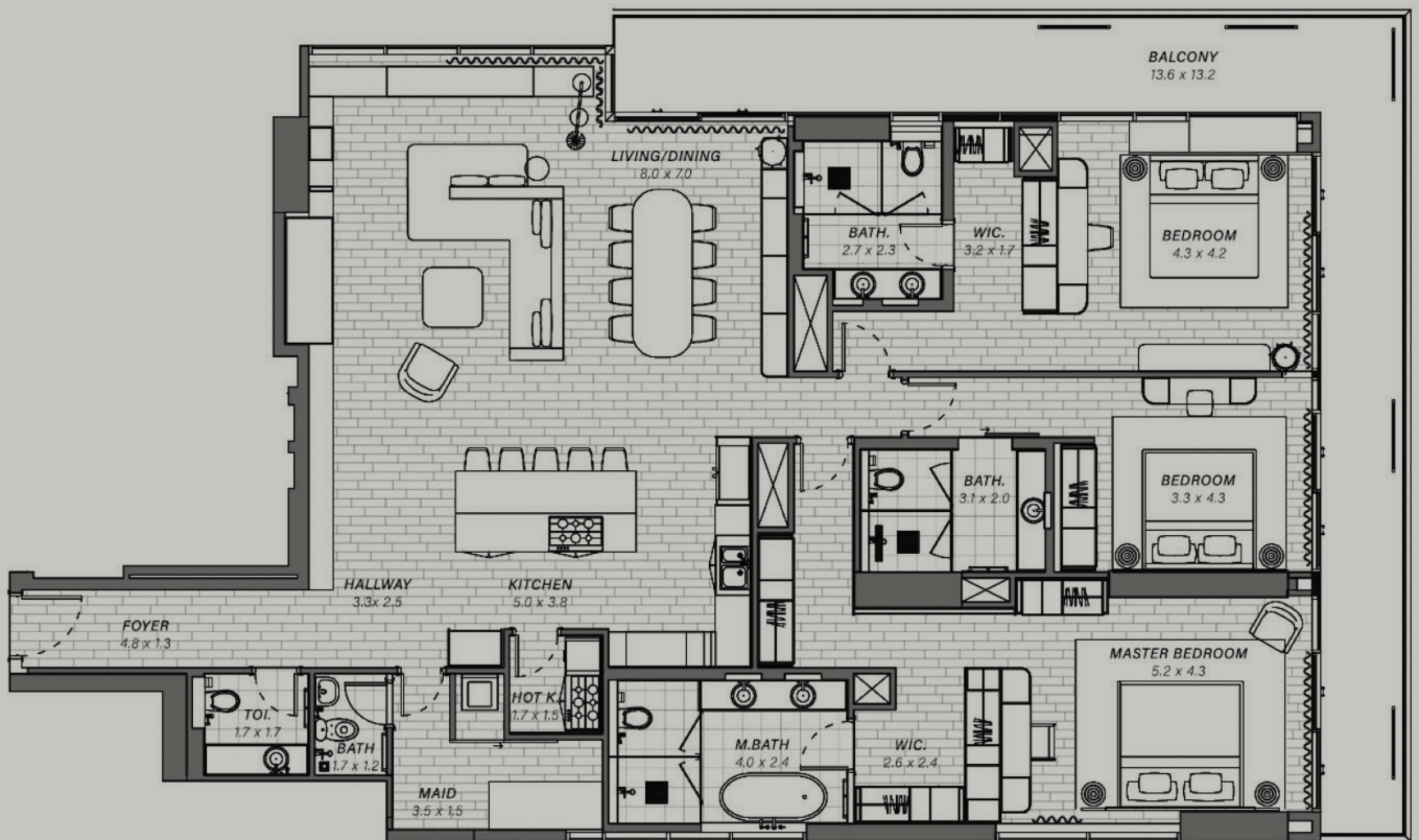


3 Bedroom, 4 Bathrooms

Unit Area	145.11 Sqm	1564.94 Sq.ft
Balcony Area	34.22 Sqm	368.34 Sq.ft
Total Area	179.33 Sqm	1930.28 Sq.ft

Unit Number 02





3 Bedroom, 4 Bathrooms

Unit Area	208.23 Sqm	2241.34 Sq.ft
Balcony Area	46.73 Sqm	503.99 Sq.ft
Total Area	254.96 Sqm	2744.33 Sq.ft

Unit Number 08

