

# SEALAVIE

LUXURY LIVING BY THE BAY



Real Estate Development

# Why **ABU DHABI?**

Abu Dhabi, a world of endless possibilities, where you can enjoy year-round sports, entertainment, and cultural events in a safe and secure environment. Abu Dhabi is a hub for innovation and sustainability, with world-class infrastructure. With a well-regulated market and tax free benefits It is the perfect location for investment. In Abu Dhabi, the opportunities are boundless



# Yas Island

A destination designed to suit every lifestyle, from the aspirational to the adventurous, and where everything you want is within reach.





*Welcome To*  
**Sea La Vie**  
Luxury Living by the Bay



gettyimages  
Thomas Barwick

## A unique waterfront lifestyle destination

---

Where today's innovations are creating homes and building happy communities that are environmentally friendly and sustainable, ensuring a better quality of life for all.

---



---

**A blend of stunning architecture,  
modern design and unrivaled  
views**

---





---

**A community where waterfront living takes on a new dimension of elegance**

---



---

**Fulfilling your needs and nurturing mind, body and soul - your health and wellbeing are catered for at Sea La Vie.**

---

ge  
Cai





## Designed for your comfort

---

Hi-tech fixtures and fittings are complemented by the ingress of natural light, allowing subtle hues and creative lighting to enhance the spacious accommodation, designed for a relaxing ambiance.

---



g  
m  
S

# Inspired by the Sea

Our concept is to designed to embrace and reflect the sea colors in the interior spaces for a better dialogue between inside and outside.

**CONNECT**



**WITH**



**MOTHER**



**NATURE**



**Where luxury and  
nature combine**



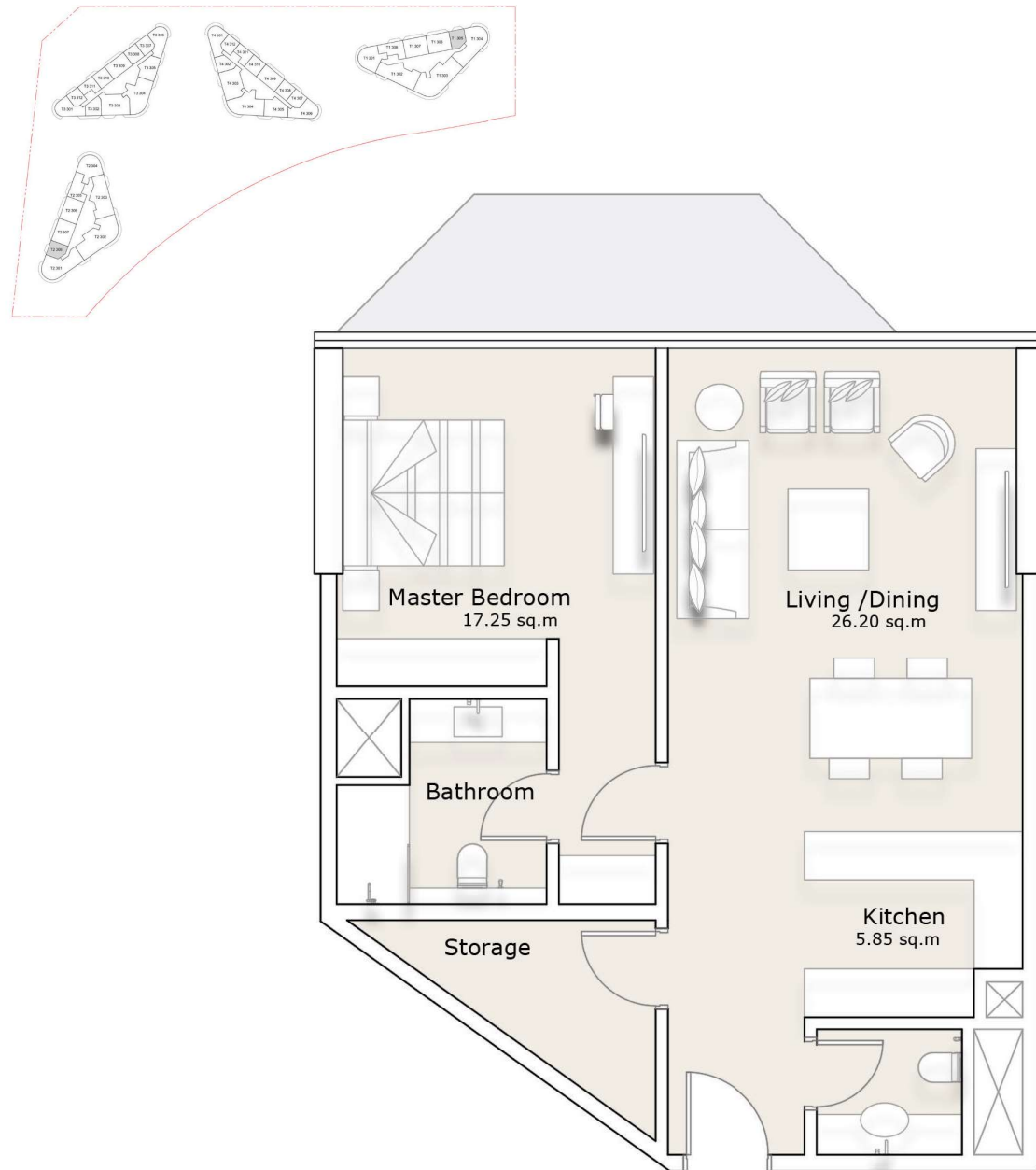






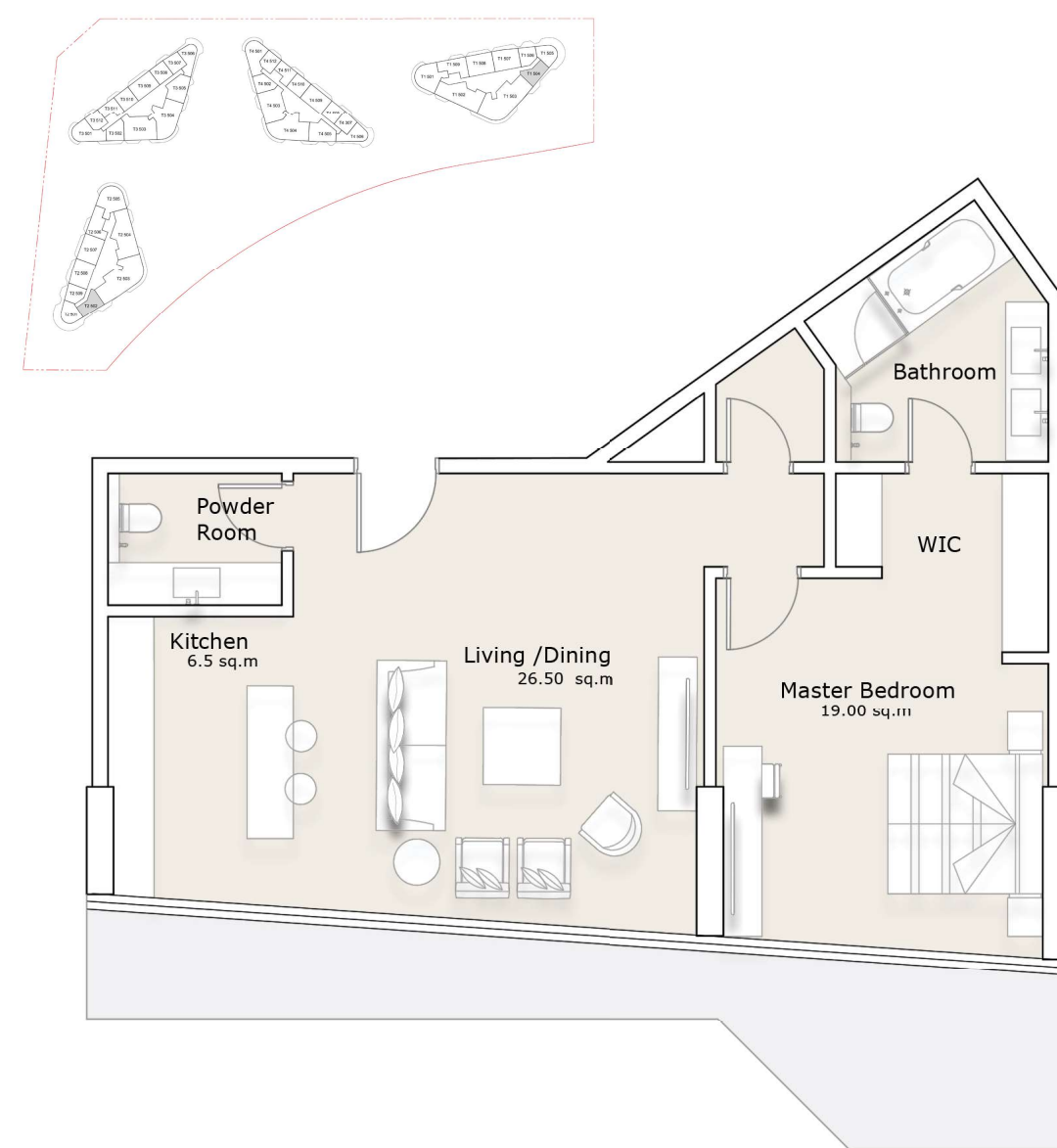
# 1-Bedroom Apartment

## TOWER 1 & 2 - TYPE A



# 1-Bedroom Apartment

## TOWER 1 & 2 - TYPE B



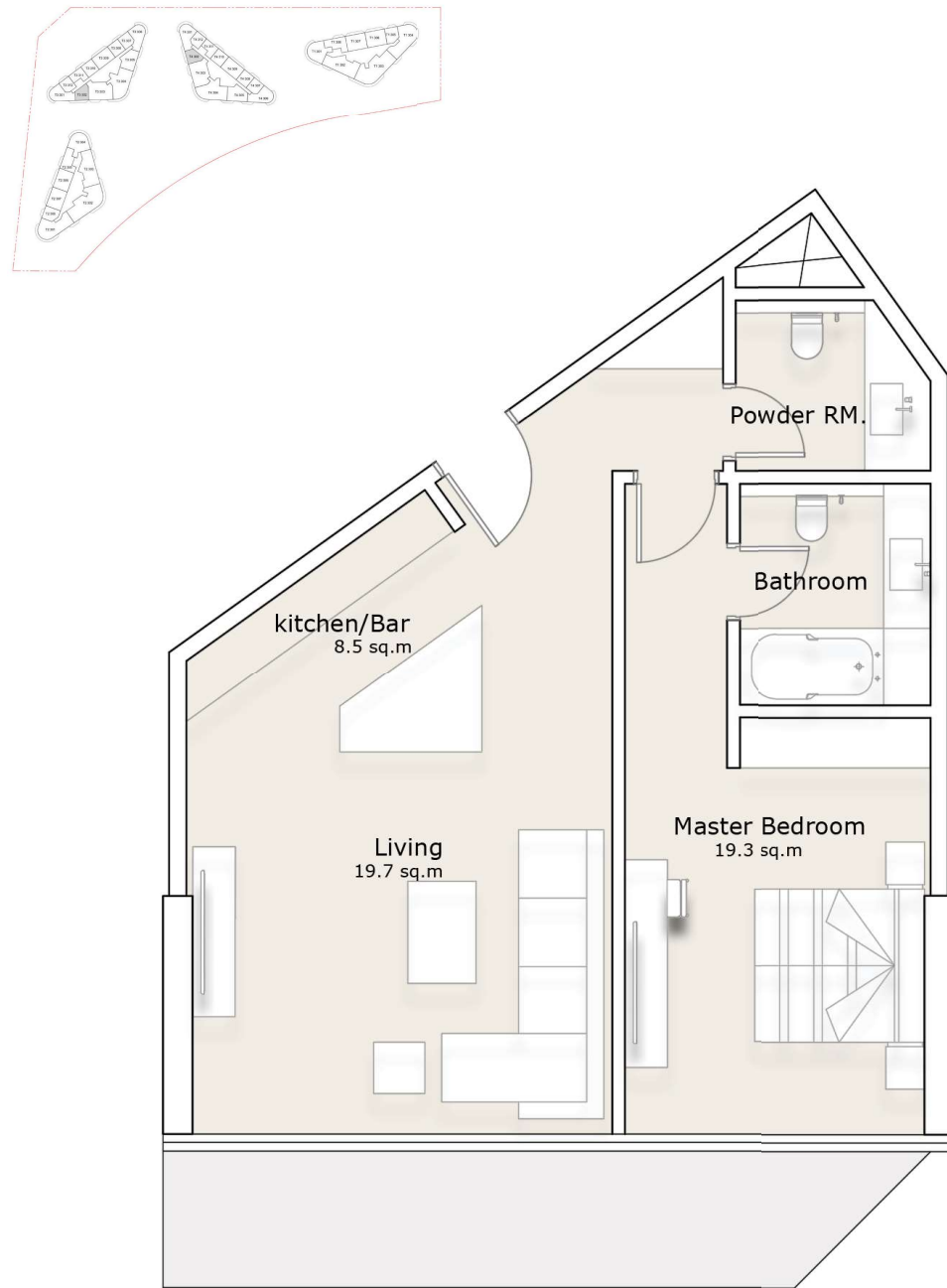


All materials, dimensions, and drawings are approximate only, including actual areas. / Information is subject to change at developer's discretion, without notice, and developer reserves the right to make revisions without liability. / All images used are for illustrative purposes only and do not represent the actual size, features, specifications, fittings, and furnishings.



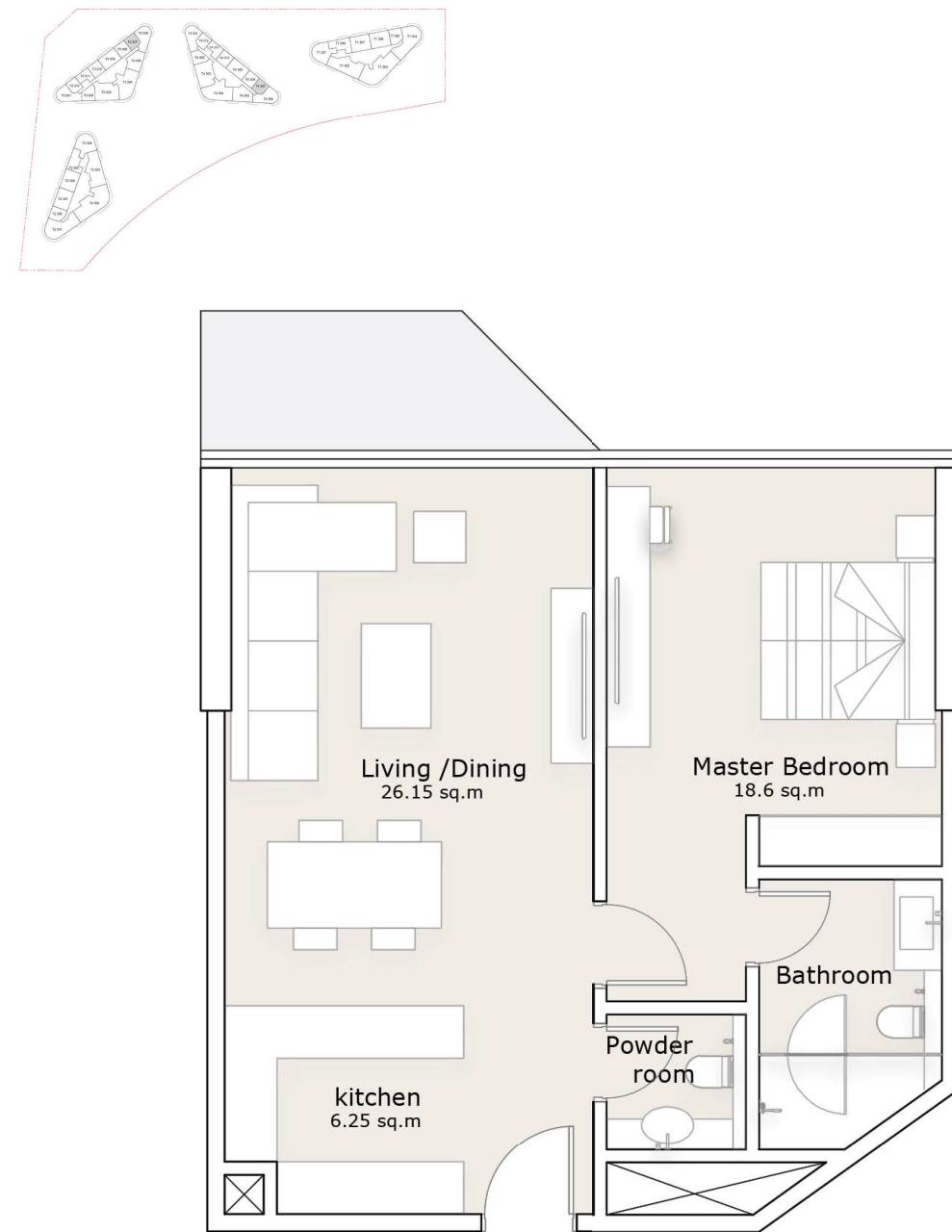
# 1-Bedroom Apartment

## TOWER 3 & 4 - TYPE C

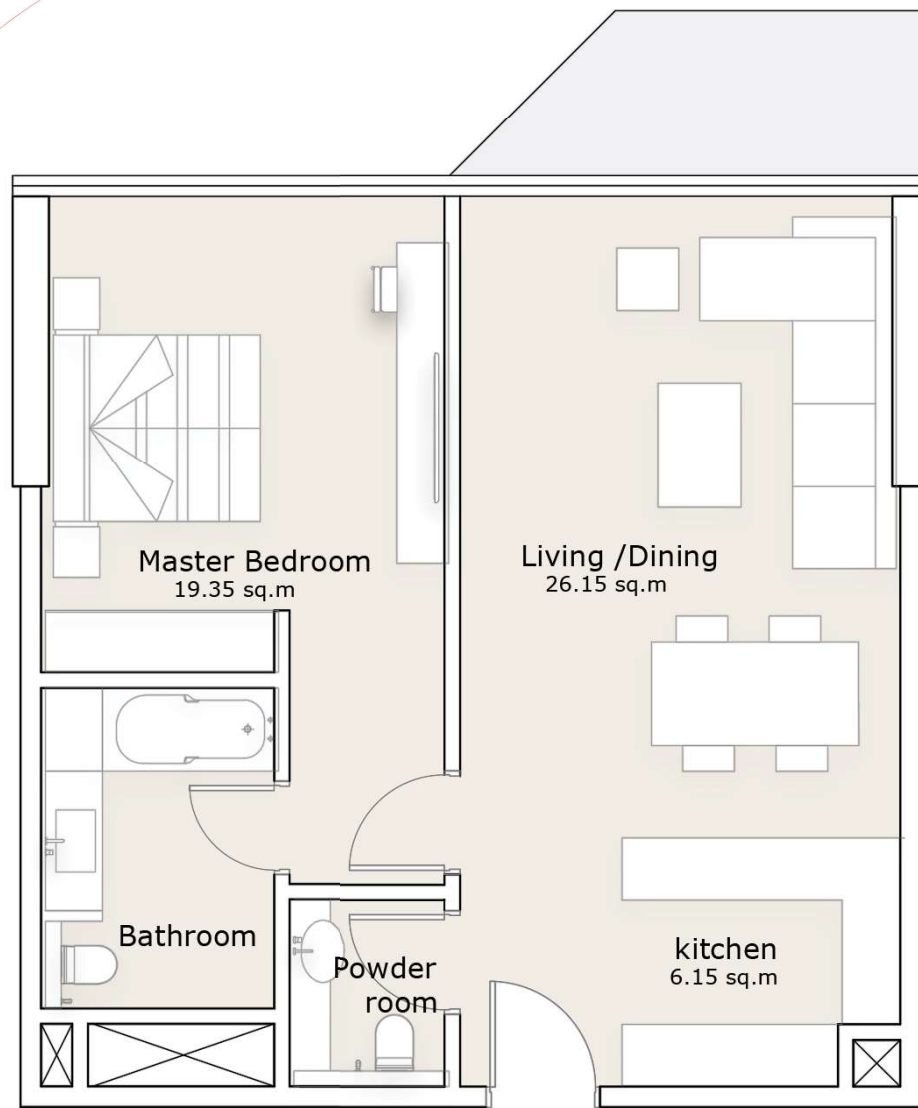
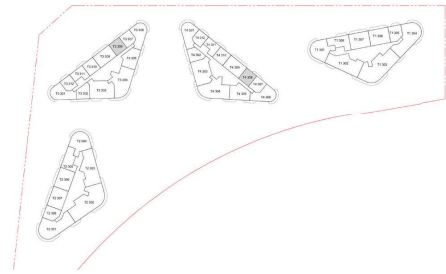


# 1-Bedroom Apartment

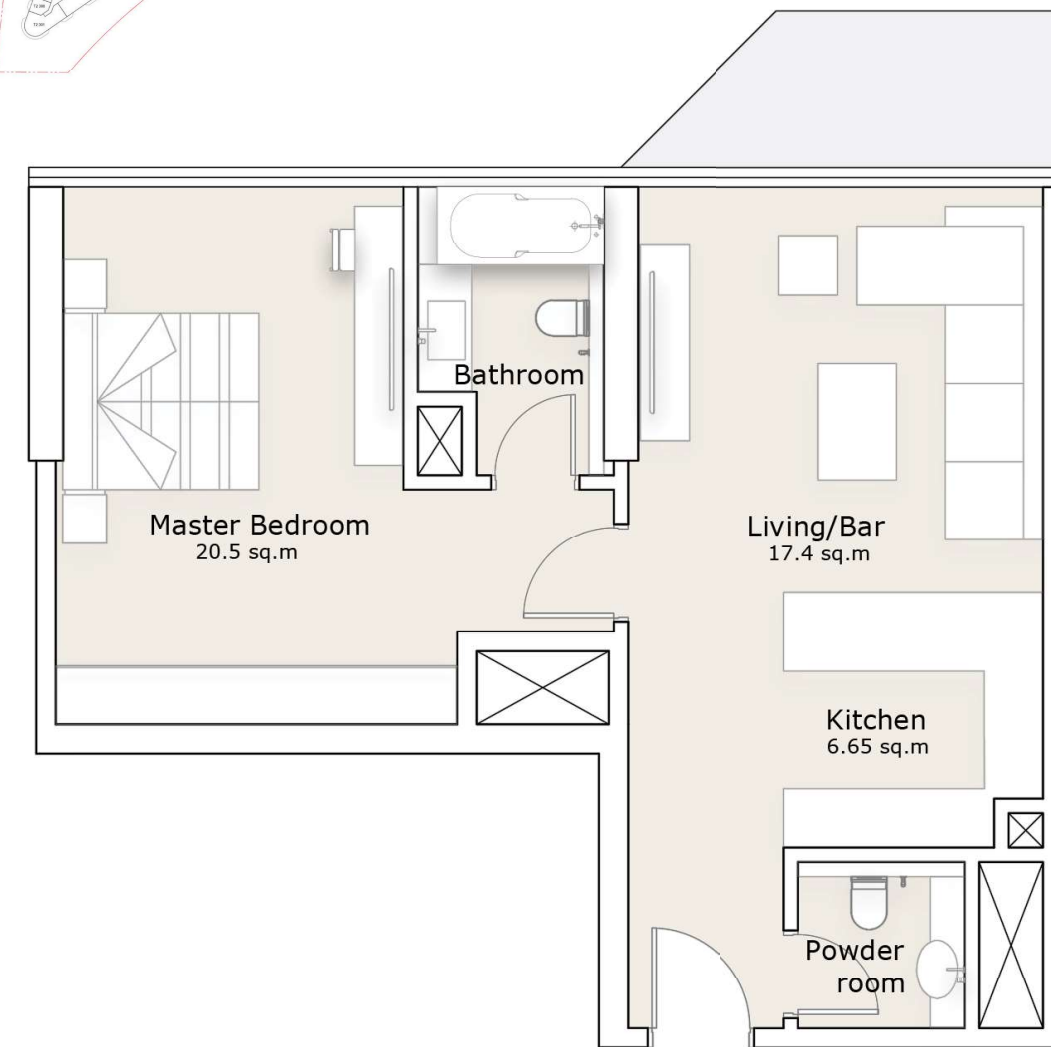
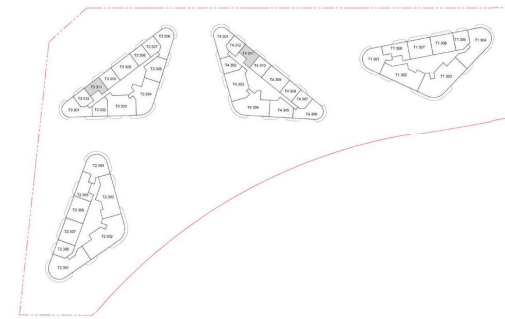
## TOWER 3 & 4 - TYPE D



# 1-Bedroom Apartment TOWER 3 & 4 - TYPE E

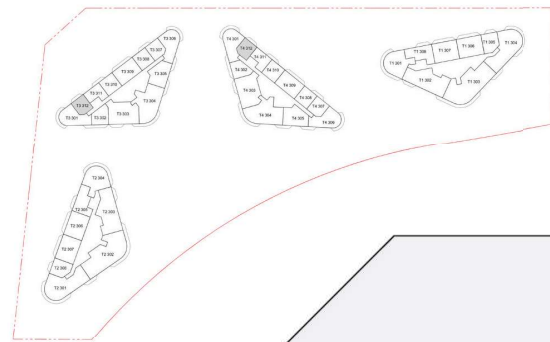


# 1-Bedroom Apartment TOWER 3 & 4 - TYPE F



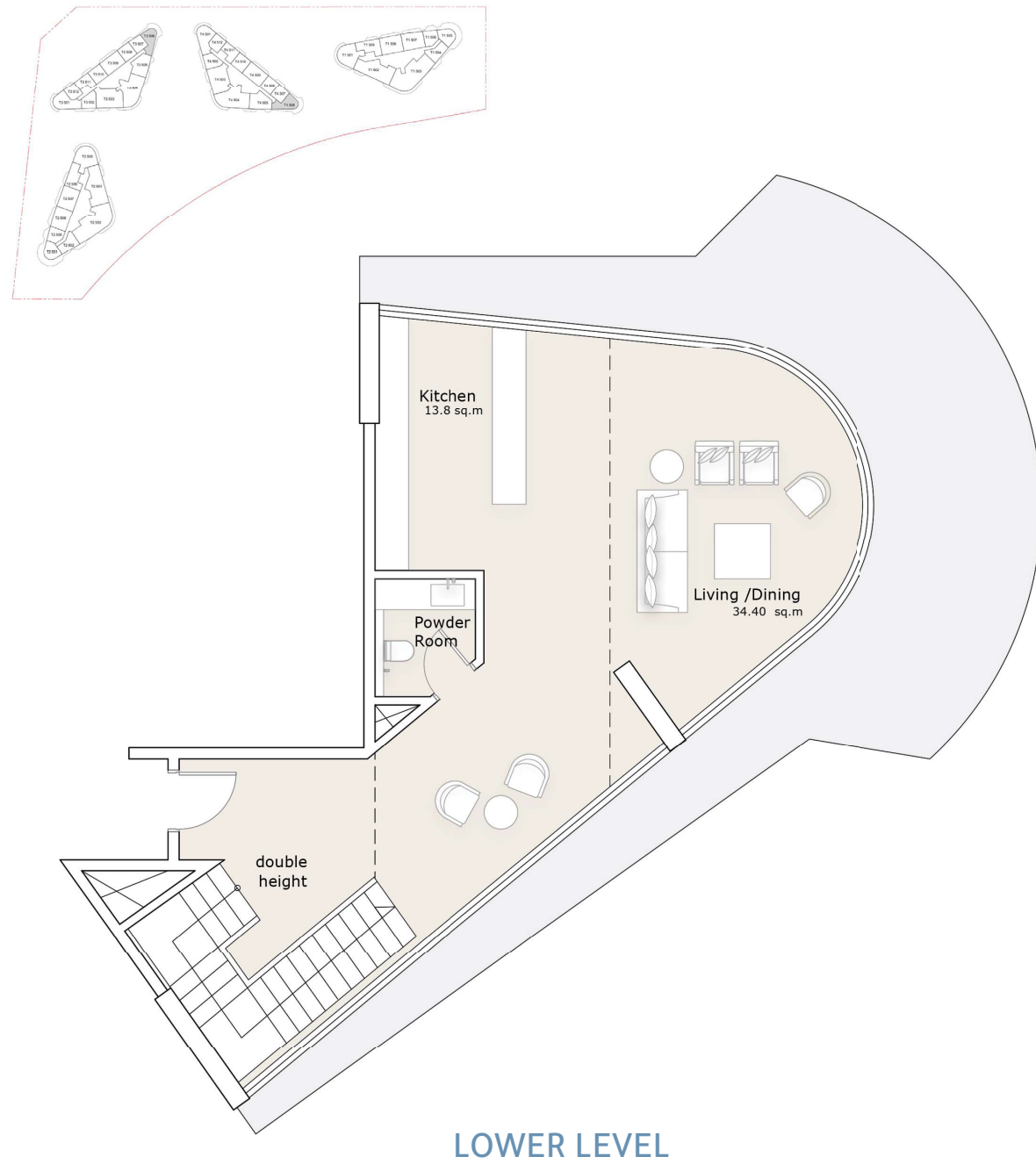
# 1-Bedroom Apartment

## TOWER 3 & 4 - TYPE G



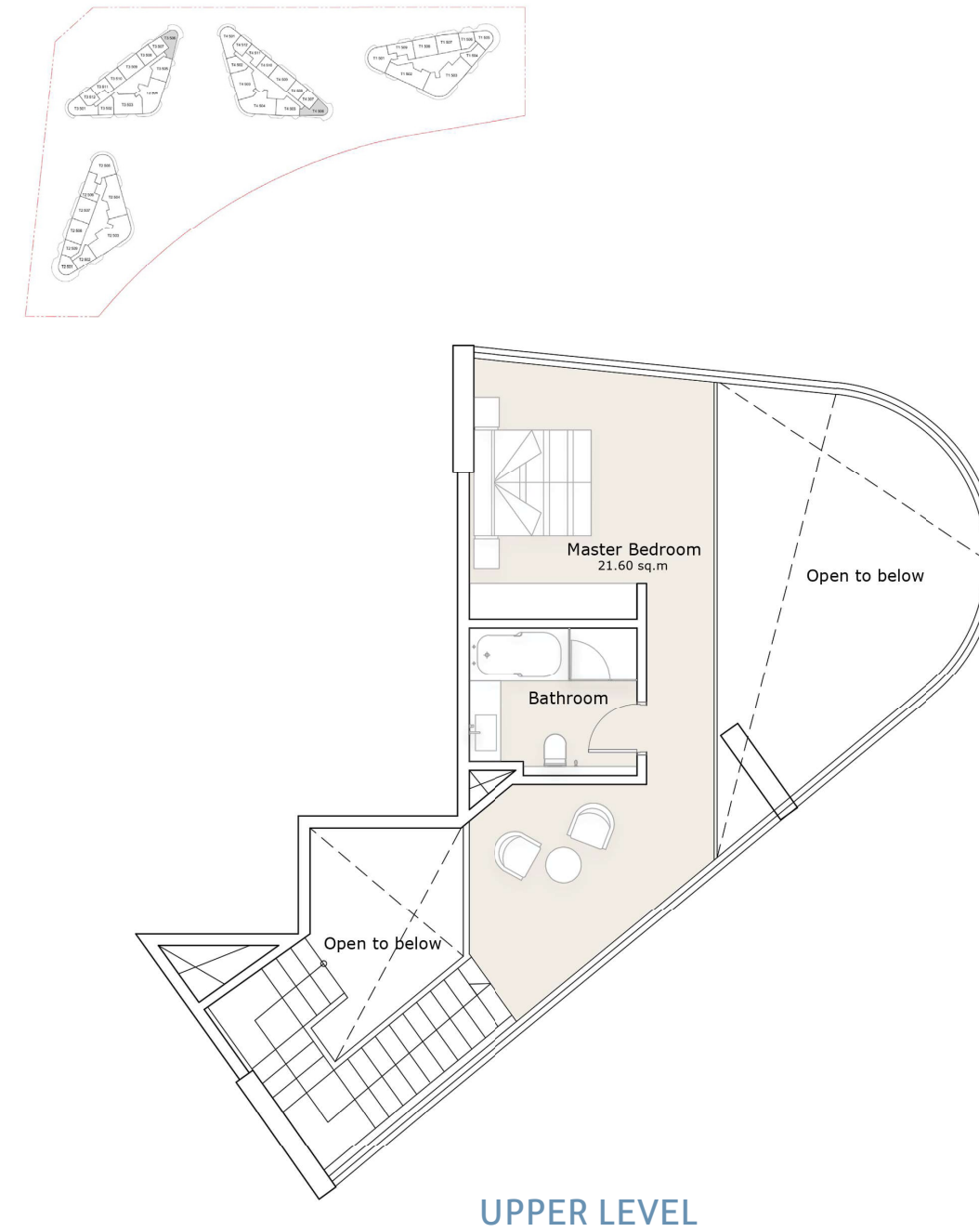
# 1-Bedroom Apartment

## TOWER 3 & 4 - LOFT



# 1-Bedroom Apartment

## TOWER 3 & 4 - LOFT

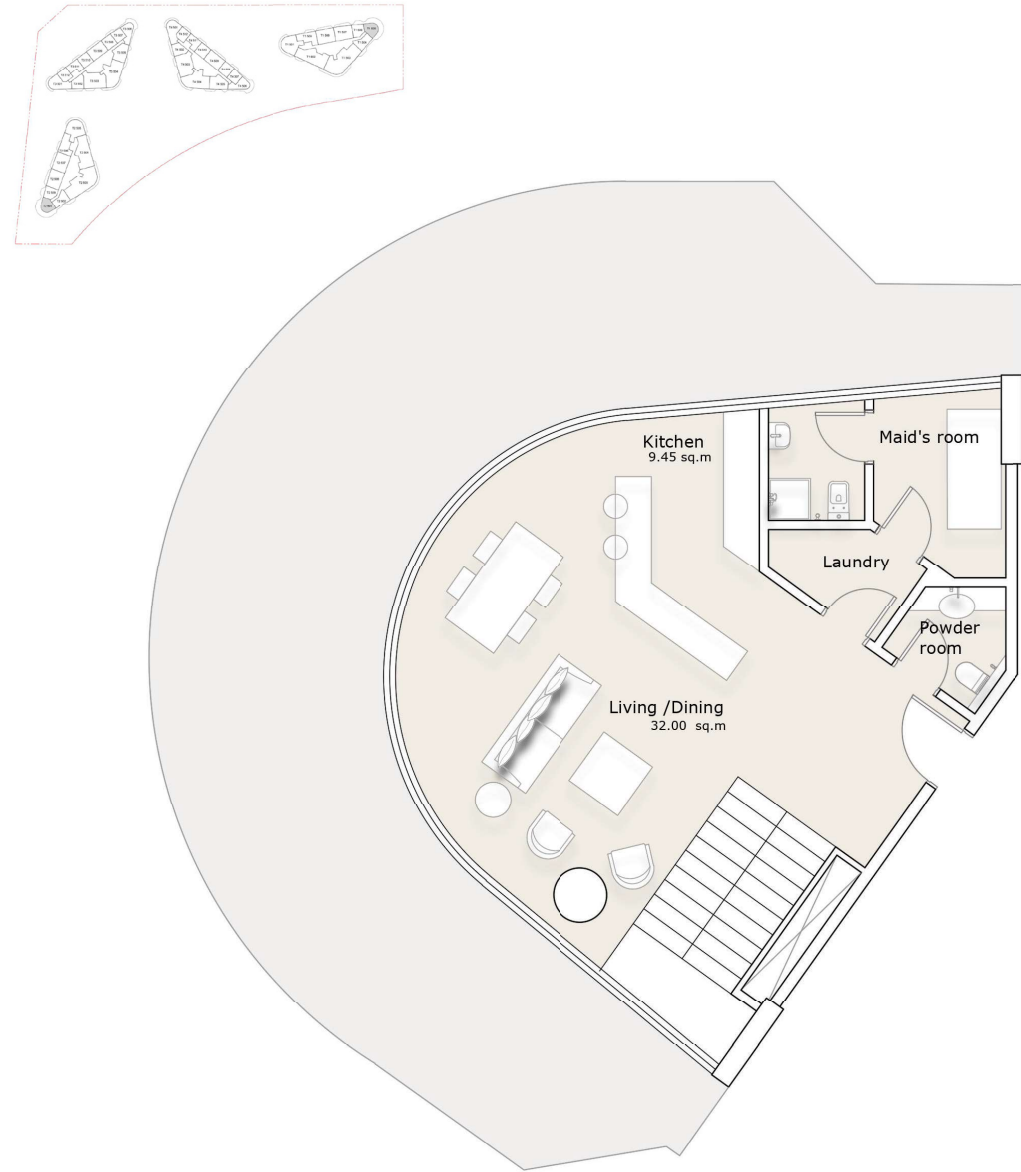




All materials, dimensions, and drawings are approximate only, including actual areas. / Information is subject to change at developer's discretion, without notice, and developer reserves the right to make revisions without liability. / All images used are for illustrative purposes only and do not represent the actual size, features, specifications, fittings, and furnishings.

# 2-Bedroom Apartment

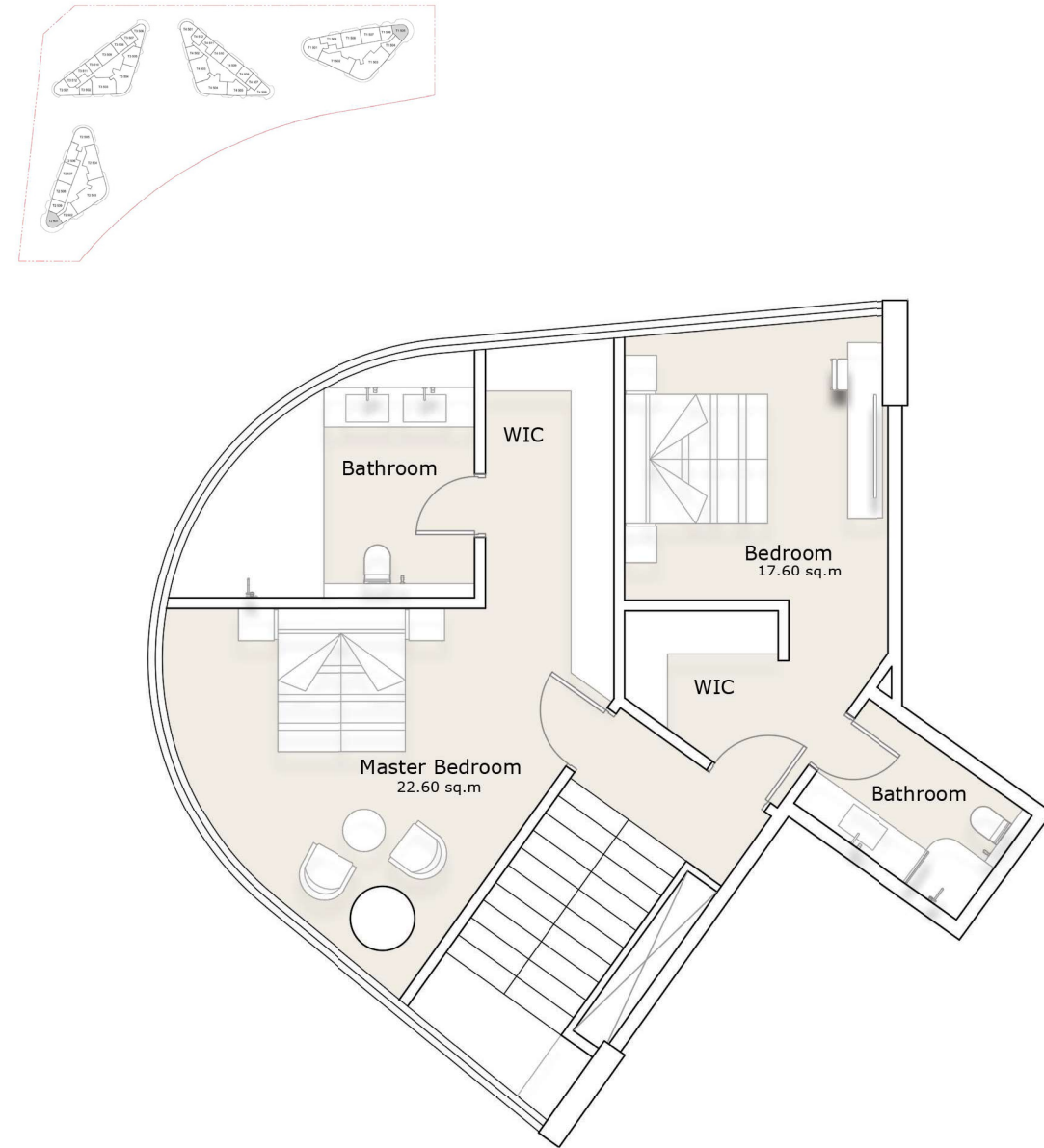
## TOWER 1 & 2 - DUPLEX



LOWER LEVEL

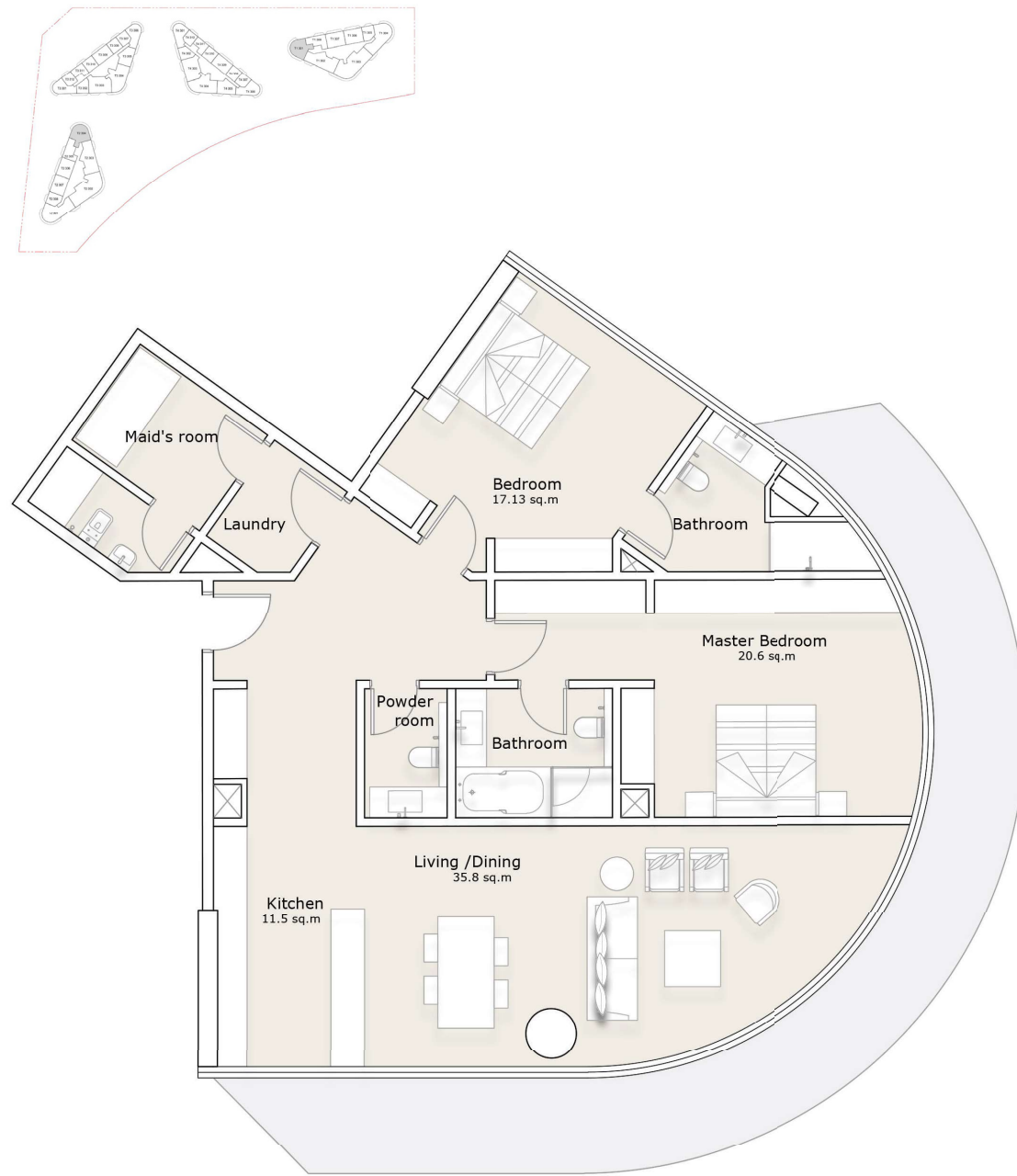
# 2-Bedroom Apartment

## TOWER 1 & 2 - DUPLEX

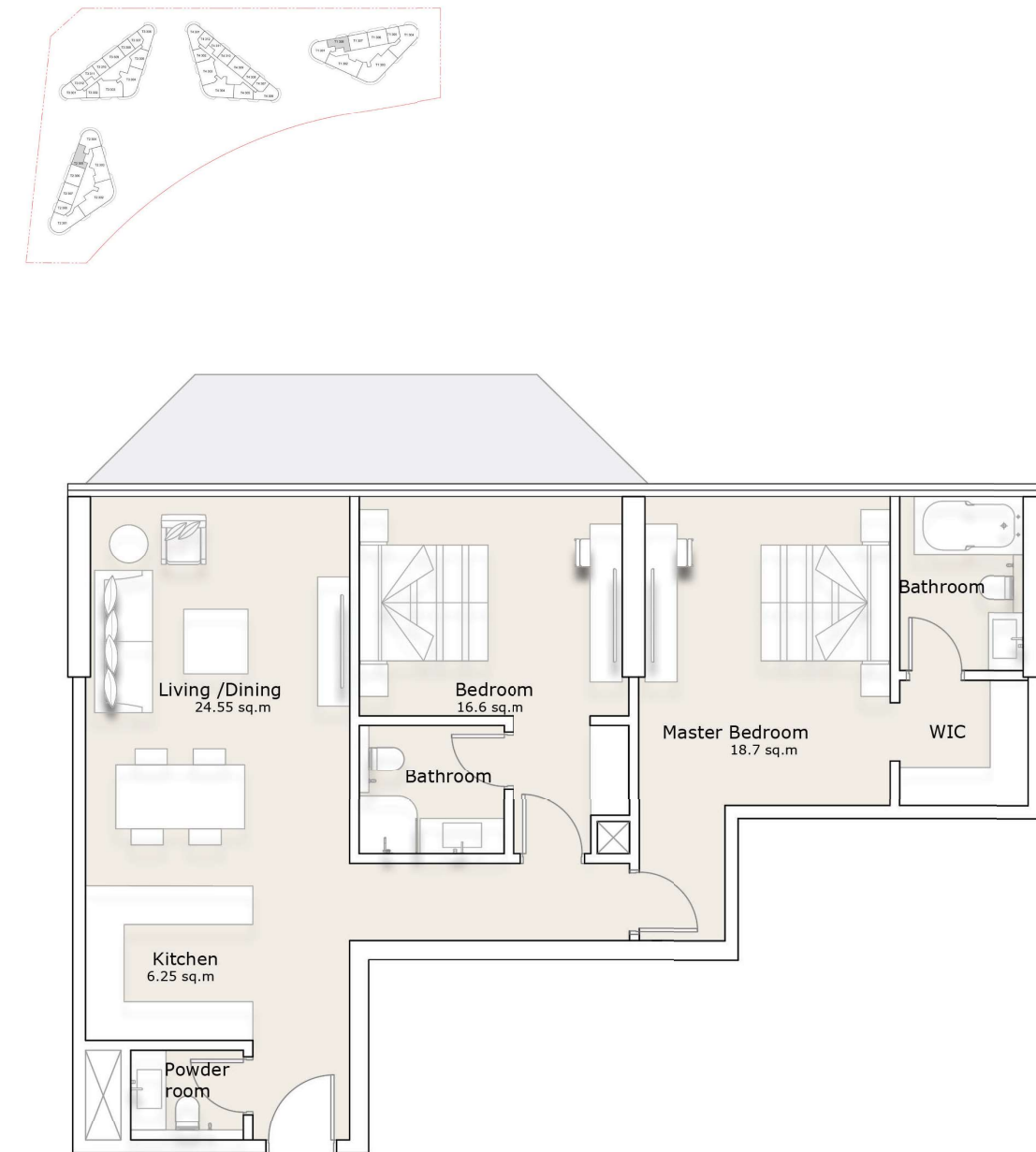


UPPER LEVEL

# 2-Bedroom Apartment TOWER 1 & 2 - TYPE A

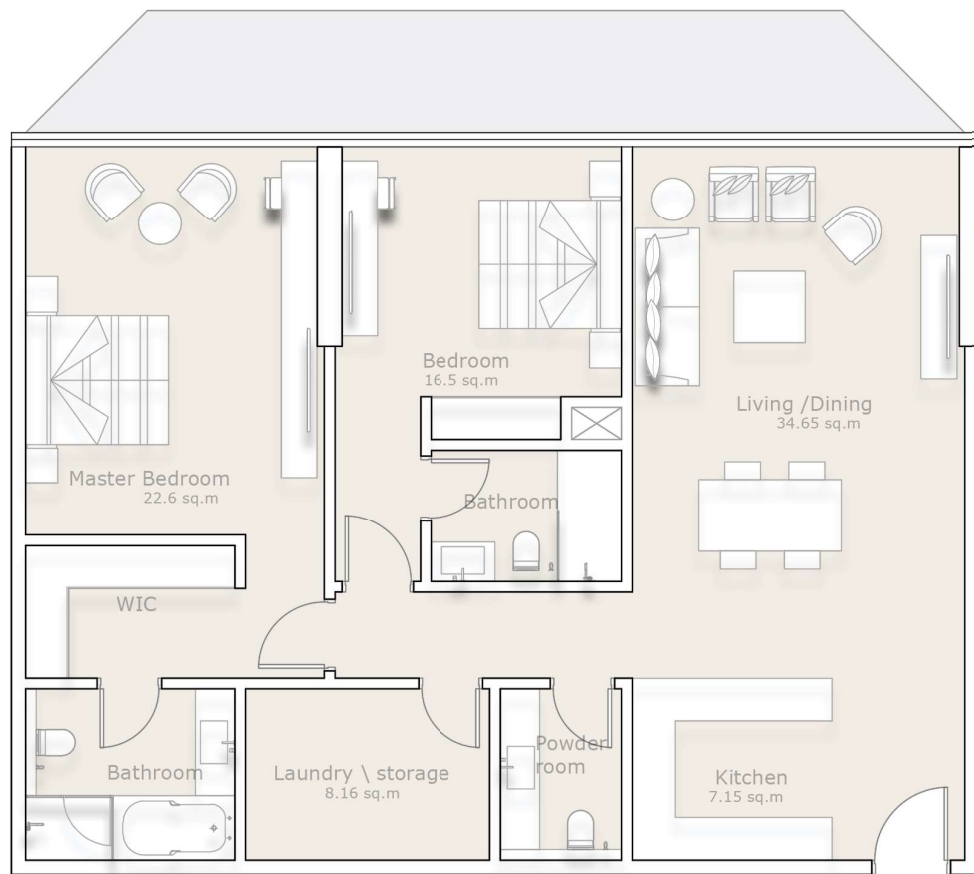
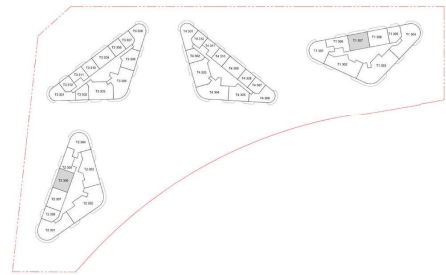


# 2-Bedroom Apartment TOWER 1 & 2 - TYPE B



# 2-Bedroom Apartment

## TOWER 1 & 2 - TYPE C

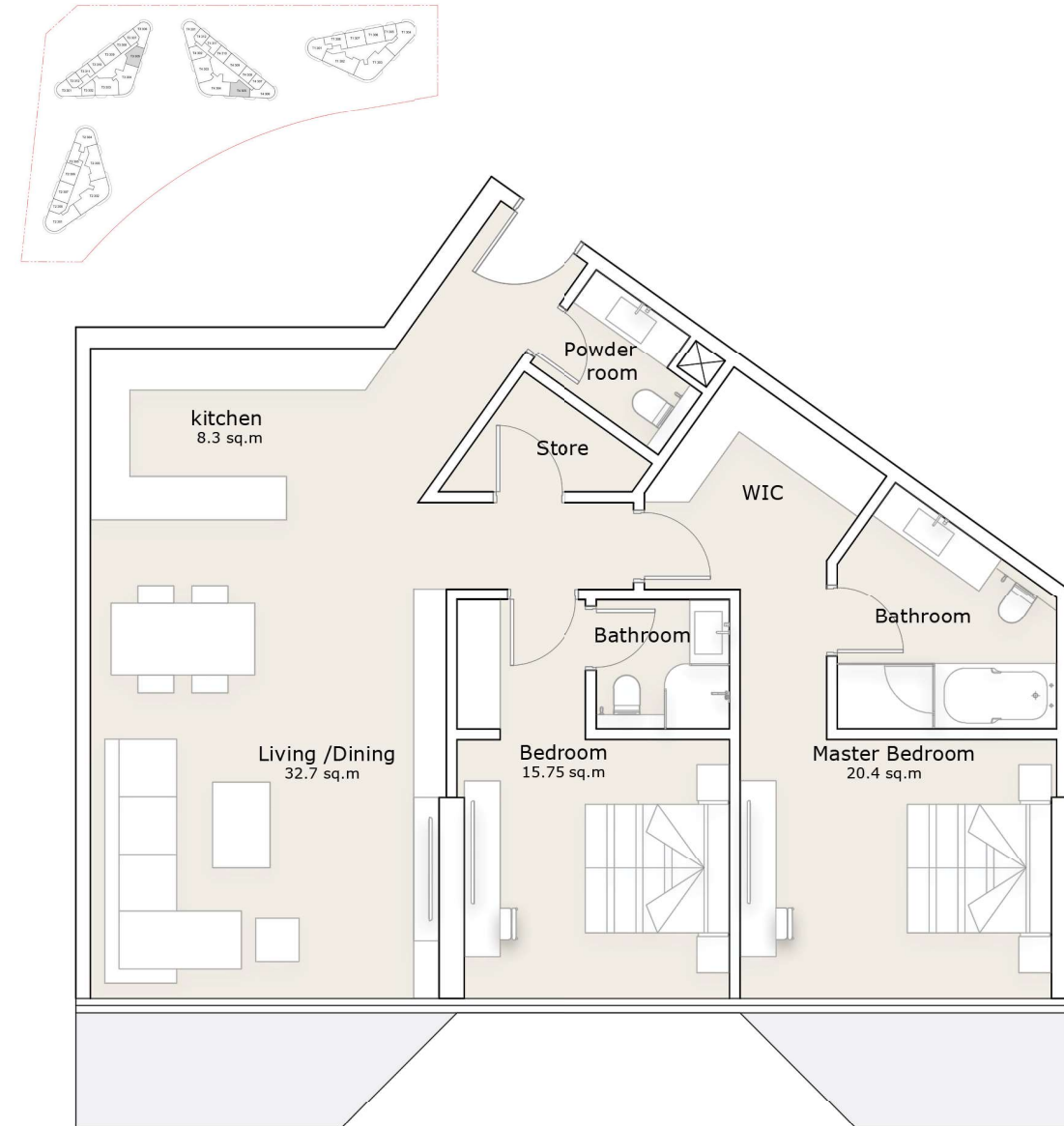




## 2-Bedroom Apartment TOWER 3 & 4 - TYPE D

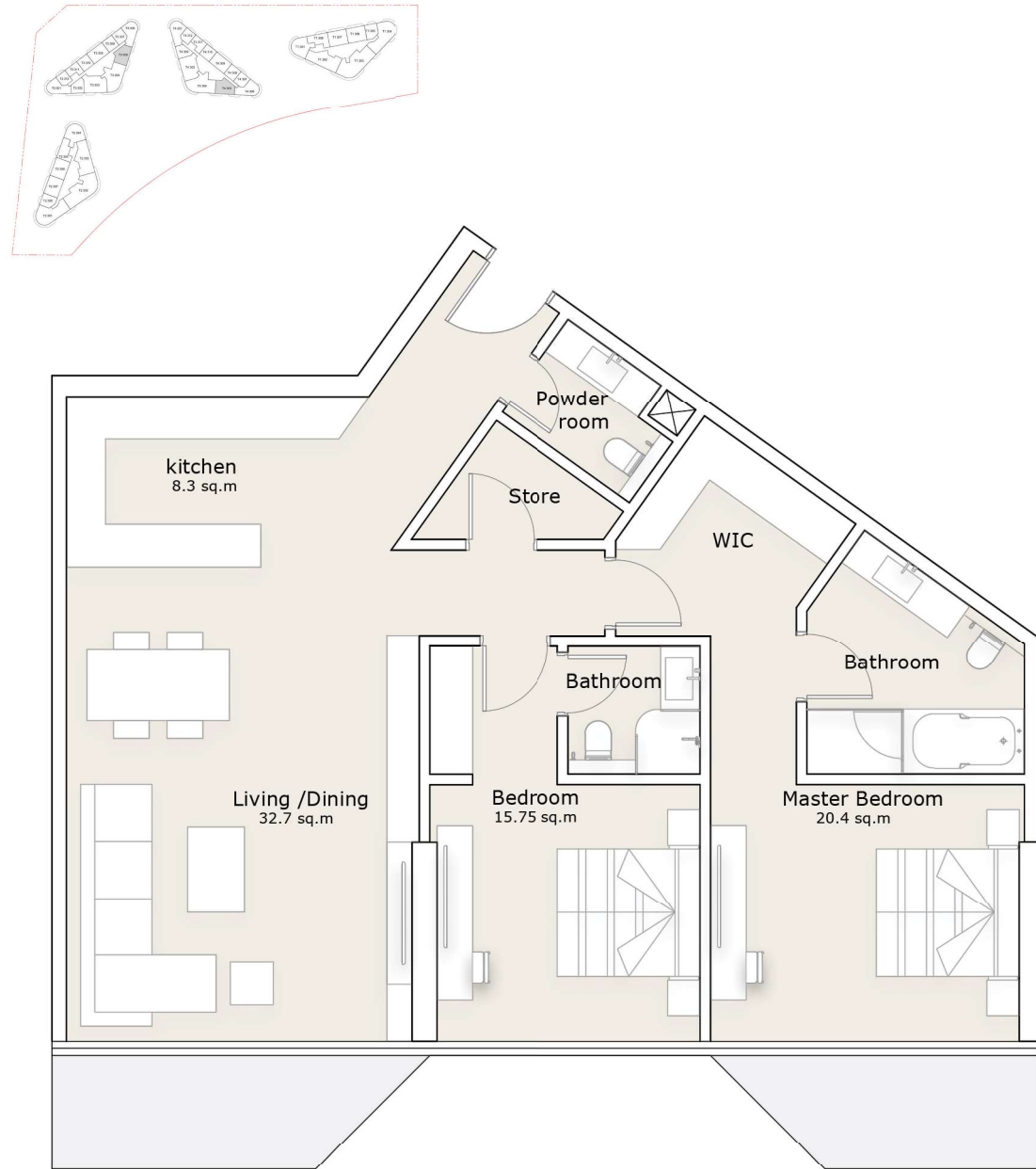


## 2-Bedroom Apartment TOWER 3 & 4 - TYPE E



# 2 Bedroom Apartment

## TOWER 3 & 4 - TYPE E



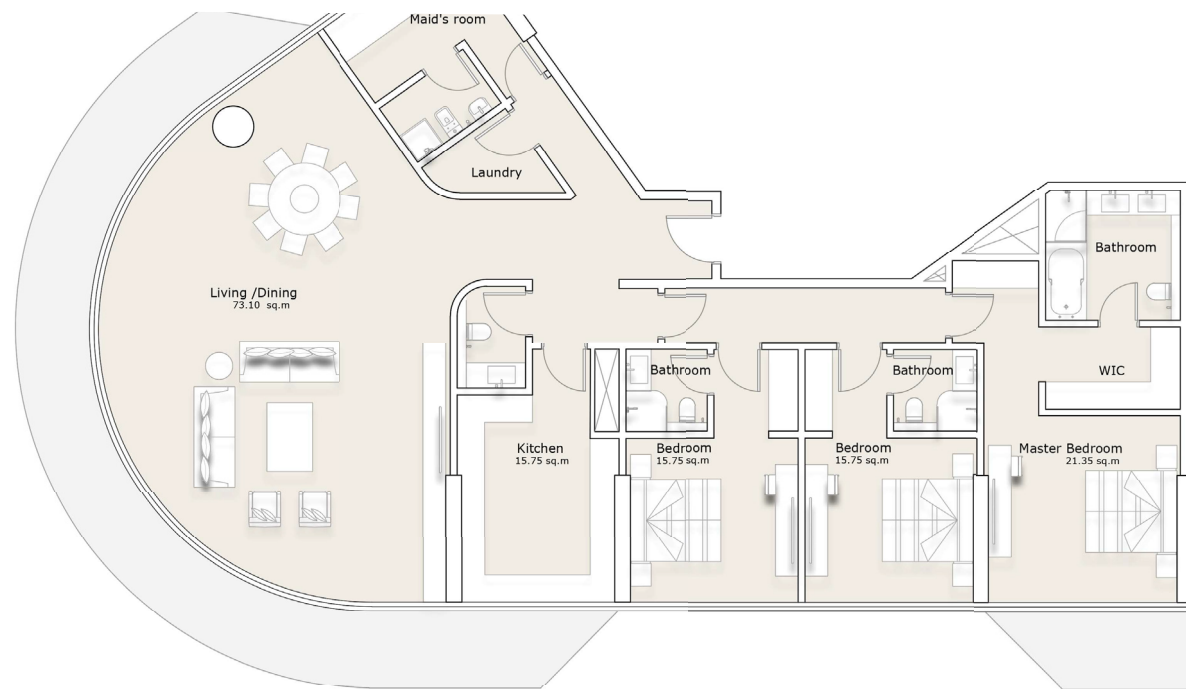
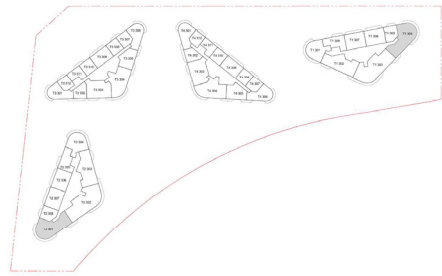
**POWDER ROOM**



All materials, dimensions, and drawings are approximate only, including actual areas. / Information is subject to change at developer's discretion, without notice, and developer reserves the right to make revisions without liability. / All images used are for illustrative purposes only and do not represent the actual size, features, specifications, fittings, and furnishings.

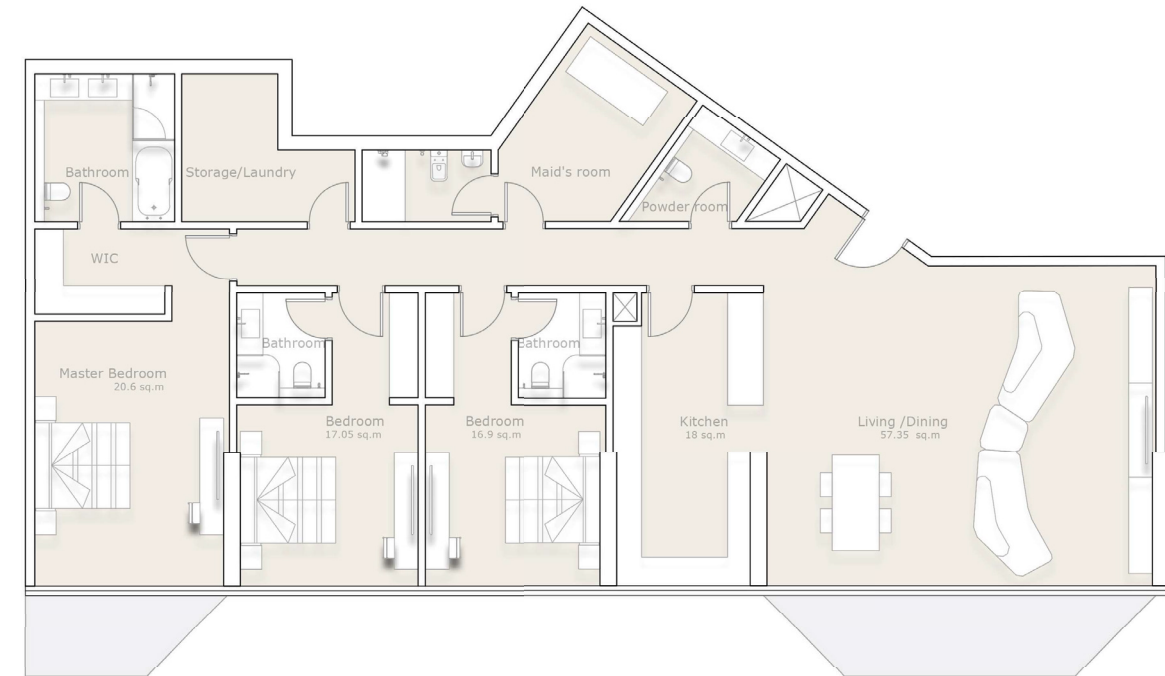
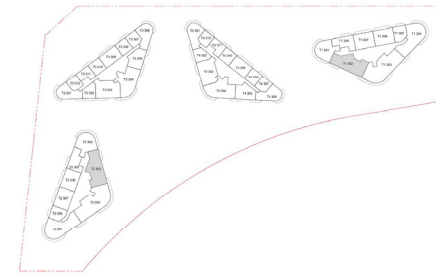
# 3 Bedroom Apartment

## TOWER 1 & 2 - TYPE A



# 3 Bedroom Apartment

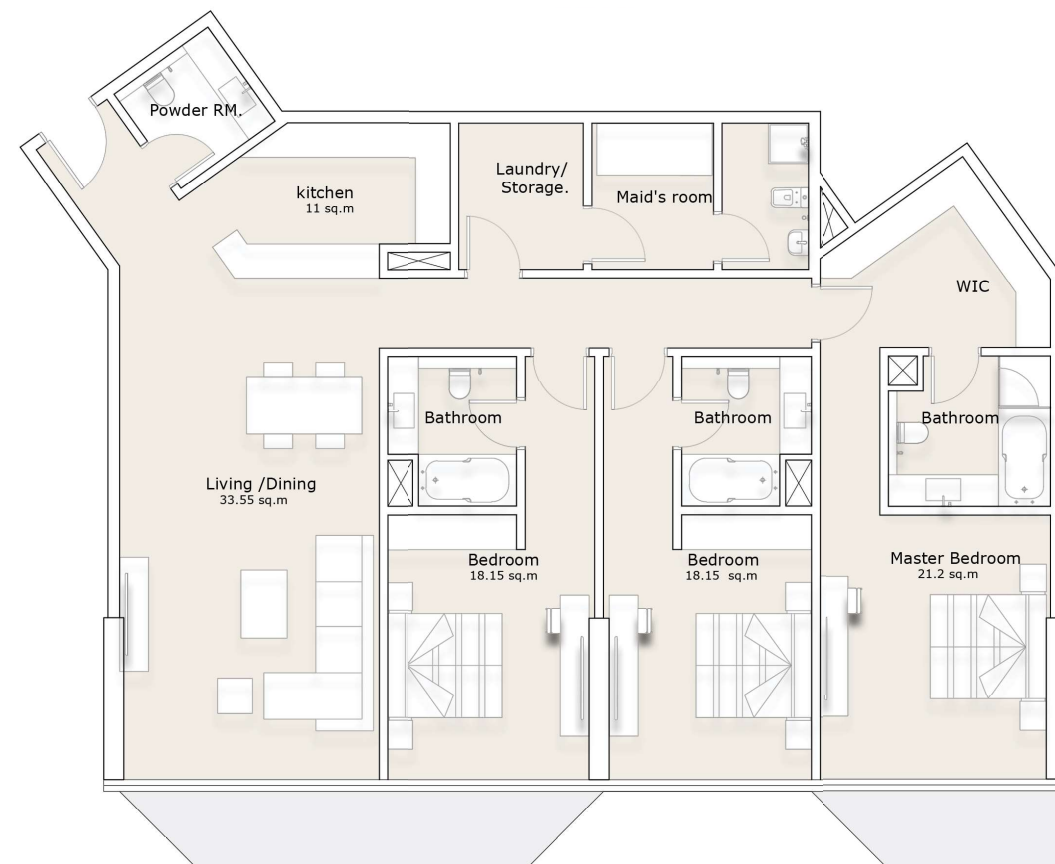
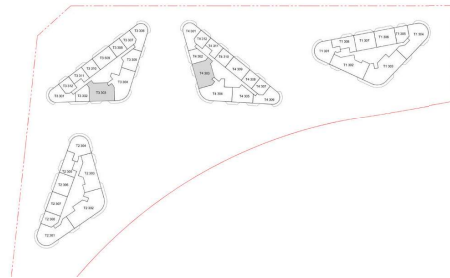
## TOWER 1 & 2 - TYPE B



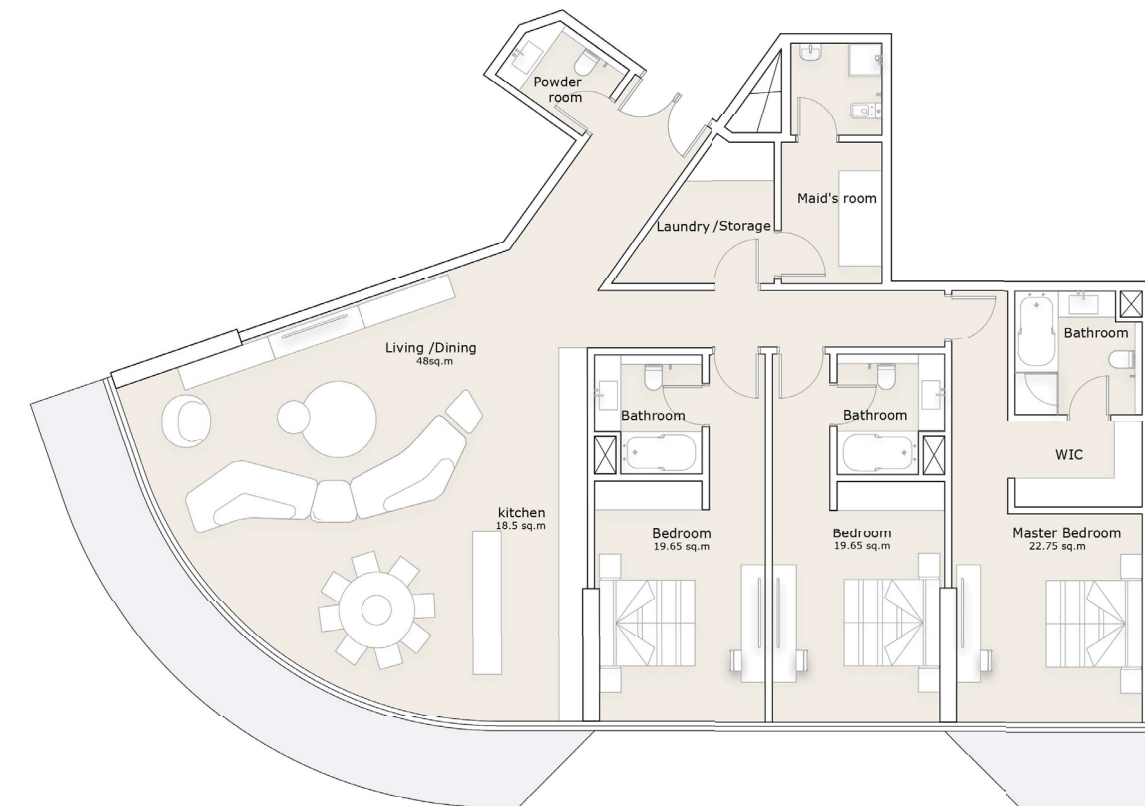
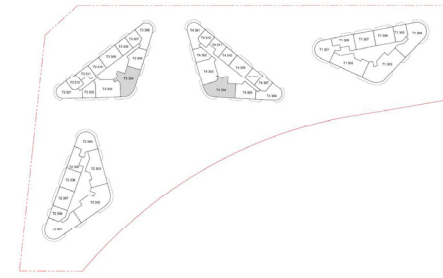


All materials, dimensions, and drawings are approximate only, including actual areas. / Information is subject to change at developer's discretion, without notice, and developer reserves the right to make revisions without liability. / All images used are for illustrative purposes only and do not represent the actual size, features, specifications, fittings, and furnishings.

## 3-Bedroom Apartment TOWER 3 & 4 - TYPE C



## 3-Bedroom Apartment TOWER 3 & 4 - TYPE D

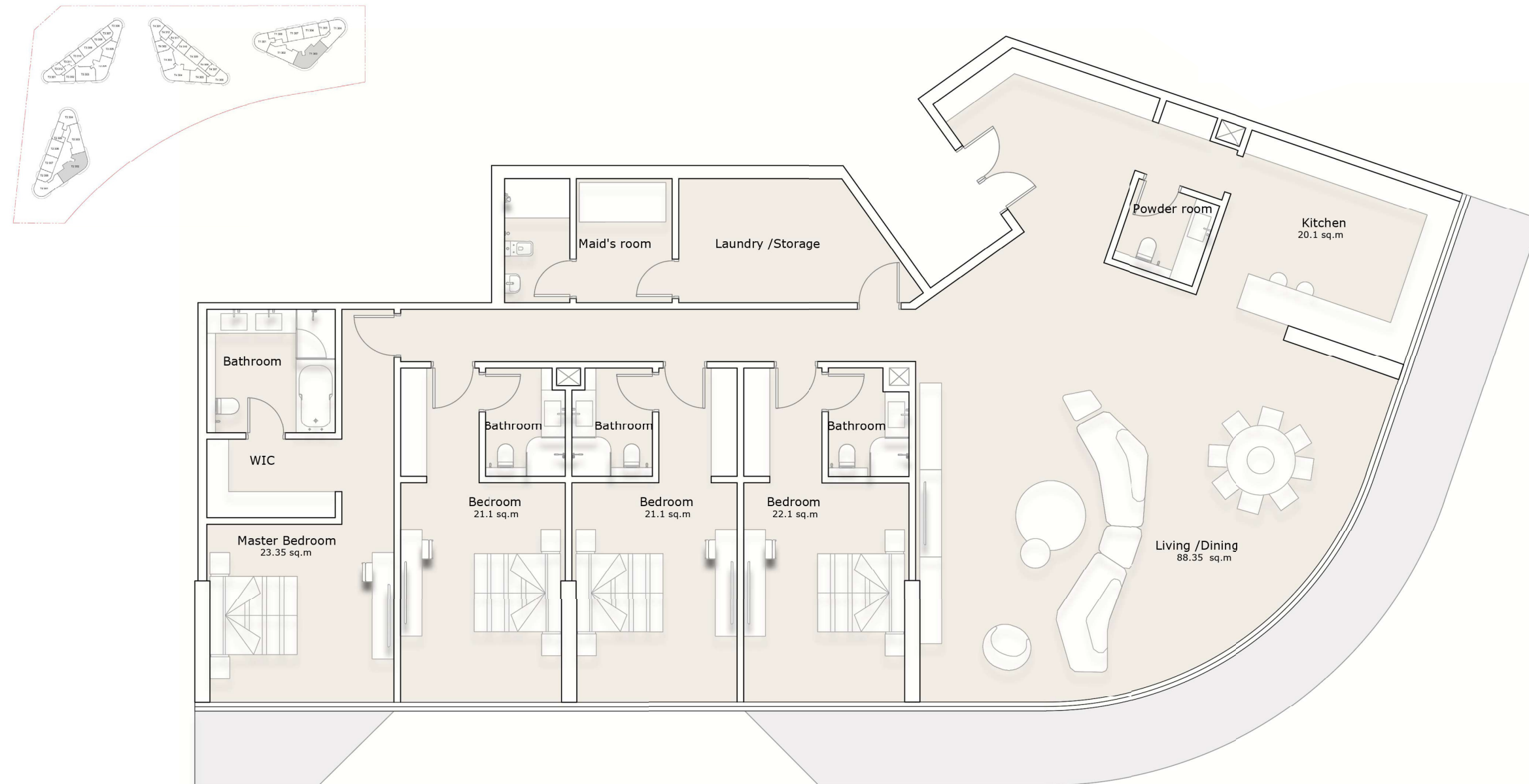




All materials, dimensions, and drawings are approximate only, including actual areas. / Information is subject to change at developer's discretion, without notice, and developer reserves the right to make revisions without liability. / All images used are for illustrative purposes only and do not represent the actual size, features, specifications, fittings, and furnishings.

# 4-Bedroom Apartment

## TOWER 1 & 2 - TYPE A







Real Estate Development

