

NATURA PARK

ÖTÜKEN

Nature is your home



The harmony of nature and the indescribable atmosphere of Cyprus inspired us to create the «Natura Park» project. Modern materials and convenient location of the complex will give you unforgettable comfort.

Virgin nature and amazing beaches of the Mediterranean Sea will be your neighbors. We build where you will live in peace and comfort, just in the minutes away from the heart of the city.

Nature is your HOME



The construction start – June 2023 Completion – June 2026

Erbatu Hills " contains

- 2+1 90 m² apartment with garden
- 2+1 95 m² apartment with terrace

Our general standard

- The enormous variety of options at the quality floor and bathroom ceramic tiles, laminate
- The enormous variety of options at quality WC and bathroom faience, accessories
- Bathroom faience and WC are Hilton standard
- Luxury fitted kitchen (color selection)
- Fitted wardrobe in every bedroom, Entrance cabinet
- PVC double glazed windows
- Glass windows at the stairs
- Aluminum Railing
- Hydrophore system and solar panel water heating system
- Central TV satellite and Internet system
- Air conditioner infrastructure
- parking place for every apartment



• Location

"Natura Park" will be built in the Otuken area, within a minute's away of the popular Long Beach of Iskele, the private club "Pera" and the entire urban facilities of Iskele city





Ötüken Mezarlığı

Tulga Balıkçılık

Akdeniz Sk

PURE İskele Villas

İK-50

La Isla

iskele

Alacan Group of Companies

NATURY
PARK

Gazimağusa-Karpaz Anayolu

imağusa-Karpaz Anayolu

Esmer Market

Marinero Restoran

• Complex plan

•01• Block's location

You can describe the section here

•02• Apartment numbering

You can describe the section here





A block

B block

C block

D block

E block

F block

G block

Apartment numbering A block



Apartment numbering B block





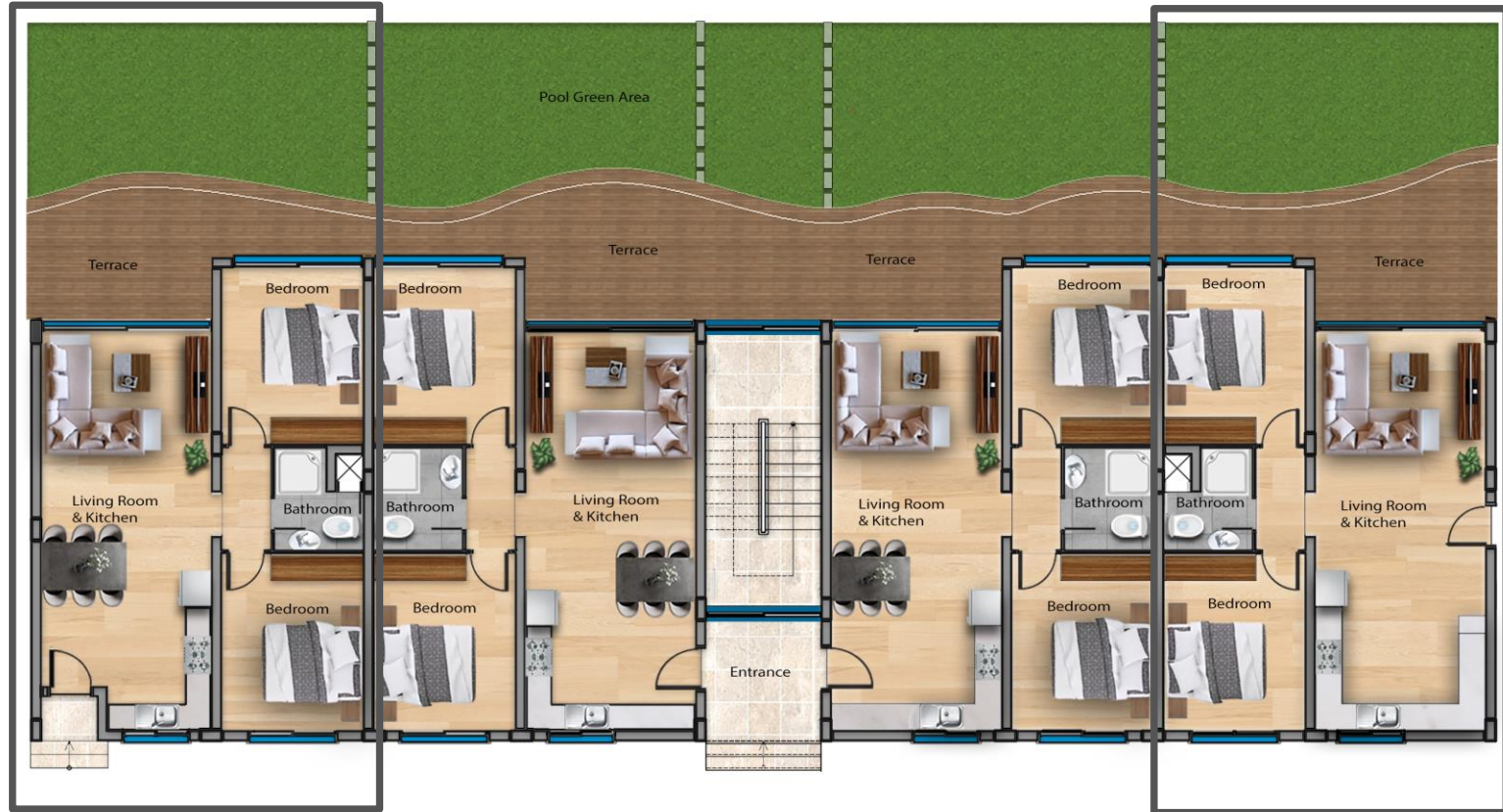
Complex will contain 2 blocks with 2+1 apartment
Huge swimming pool, kids' playground, park area, security
cameras, backup electricity generator

• Floor plans



GROUND FLOOR PLAN

All apartments have own garden



apartment with private entrance

apartment with private entrance





All apartments have own terrace

FIRST FLOOR PLAN



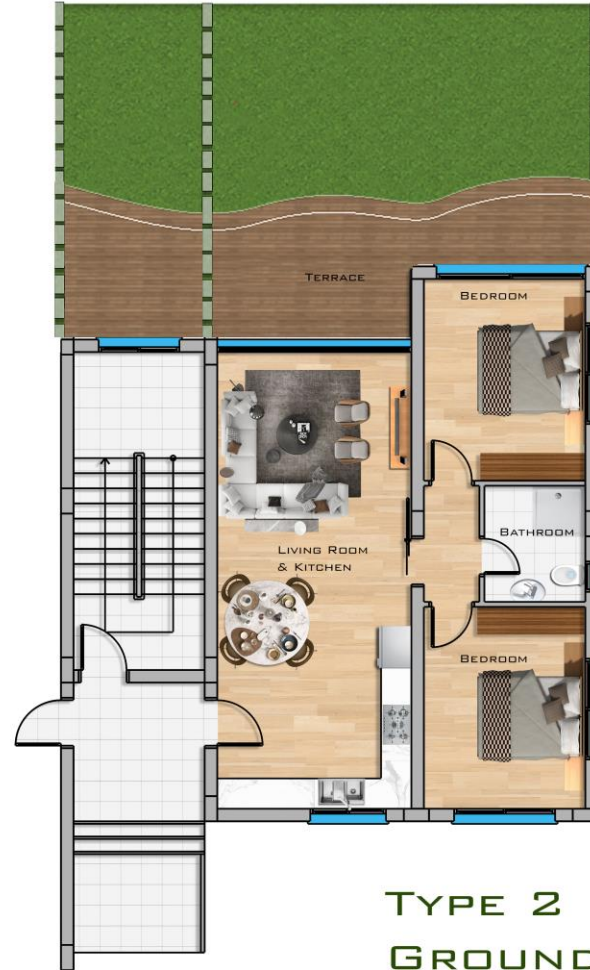






Ground Floor apartment
Room dimension

Living room + Kitchen	33.9
Bedroom	12.8
Bedroom 2	12.8
Hall	2.5
Bathroom	4.4
Open terrace	10
Garden	26-36
Living area	90





First Floor apartment
Room dimension

Living room + Kitchen	40
Bedroom	12.8
Bedroom 2	15
Master Bathroom	3.3
Bathroom	5.2
Hall	2.5
Terrace	75
Living area	95 + 75



TYPE 2
FIRST FLOOR PLAN





Time to amenities

CUSTOMER TESTIMONIALS

•01•

Airports

Ercan airport 35 min drive
Larnaca airport 55 min drive

•02•

Shops & restaurants

Local village shops & restaurant 3 minute walk away
Markets, supermarkets and malls in the town of Iskele
5 minute drive

•03•

Beaches & facilities

“Pera” club, Long Beach in 3 minute drive away
Local beach in a min drive away

