

PALMIERA 2

THE OASIS

FLOOR PLAN

EMAAR

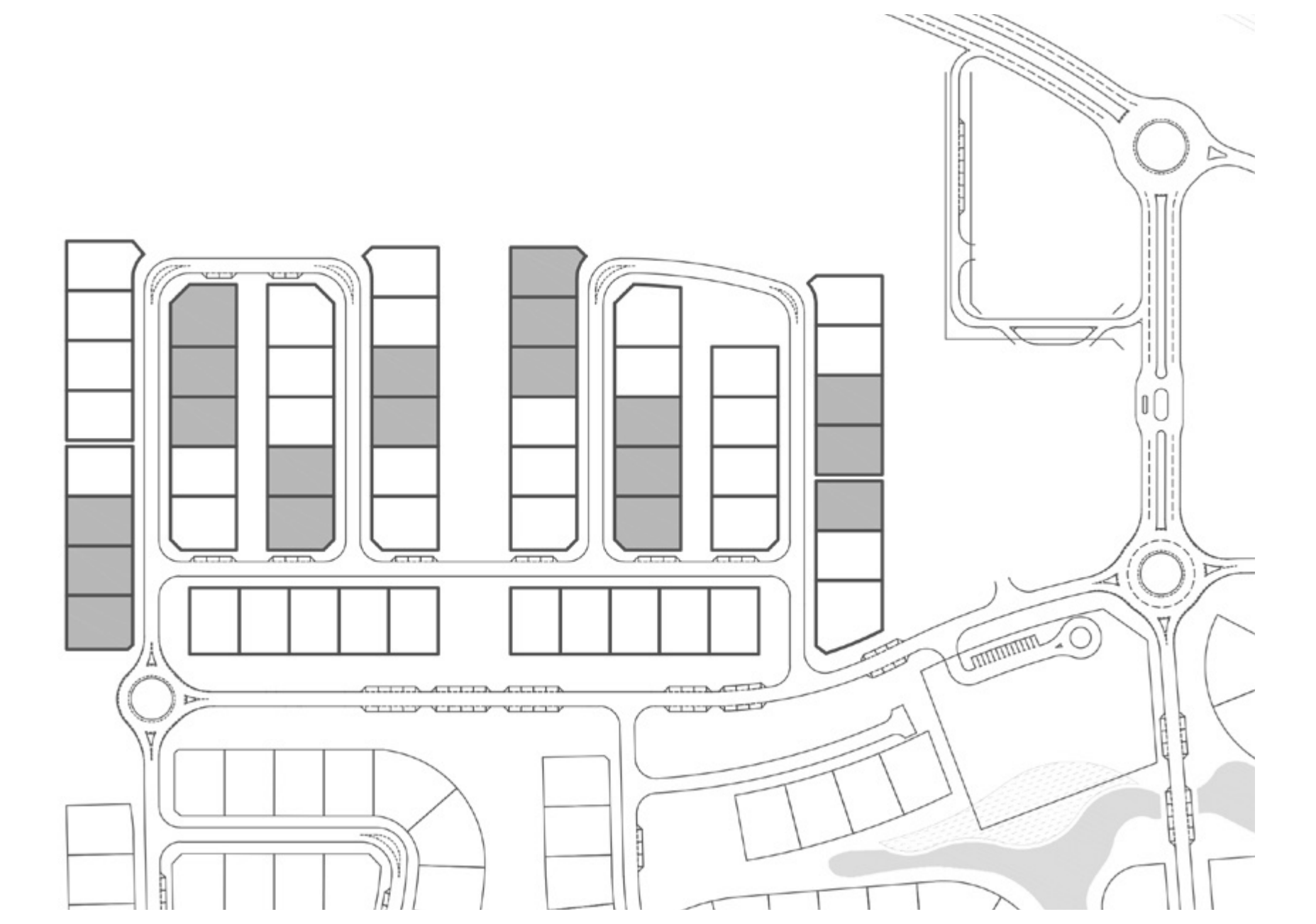
PALMIERA 2

THE OASIS

4 BEDROOM
CLASSIC

GROUND FLOOR	1,869.90	SQ.FT.	173.72	SQ.M.
FIRST FLOOR	1,682.61	SQ.FT.	156.32	SQ.M.
SECOND FLOOR	521.73	SQ.FT.	48.47	SQ.M.
CAR PORT AREA	634.53	SQ.FT.	58.95	SQ.M.
ENTRY / TERRACE	63.61	SQ.FT.	5.91	SQ.M.
BALCONY	713.75	SQ.FT.	66.31	SQ.M.
DRIVER ROOM	141.11	SQ.FT.	13.11	SQ.M.
TOTAL AREA	5,627.26	SQ.FT.	522.79	SQ.M.

KEY PLAN



GROUND FLOOR



FIRST FLOOR



SECOND FLOOR

FLOOR PLAN 1. All dimensions are in imperial and metric, and measured from finish to finish excluding construction tolerances. 2. All materials, dimensions, and drawings are approximate only. 3. Information is subject to change without notice, at developer's absolute discretion. 4. Actual area may vary from the stated area. 5. Drawings not to scale. 6. All images used are for illustrative purposes only and do not represent the actual size, features, specifications, fittings, and furnishings. 7. The developer reserves the right to make revisions / alterations, at it's absolute discretion, without any liability whatsoever.

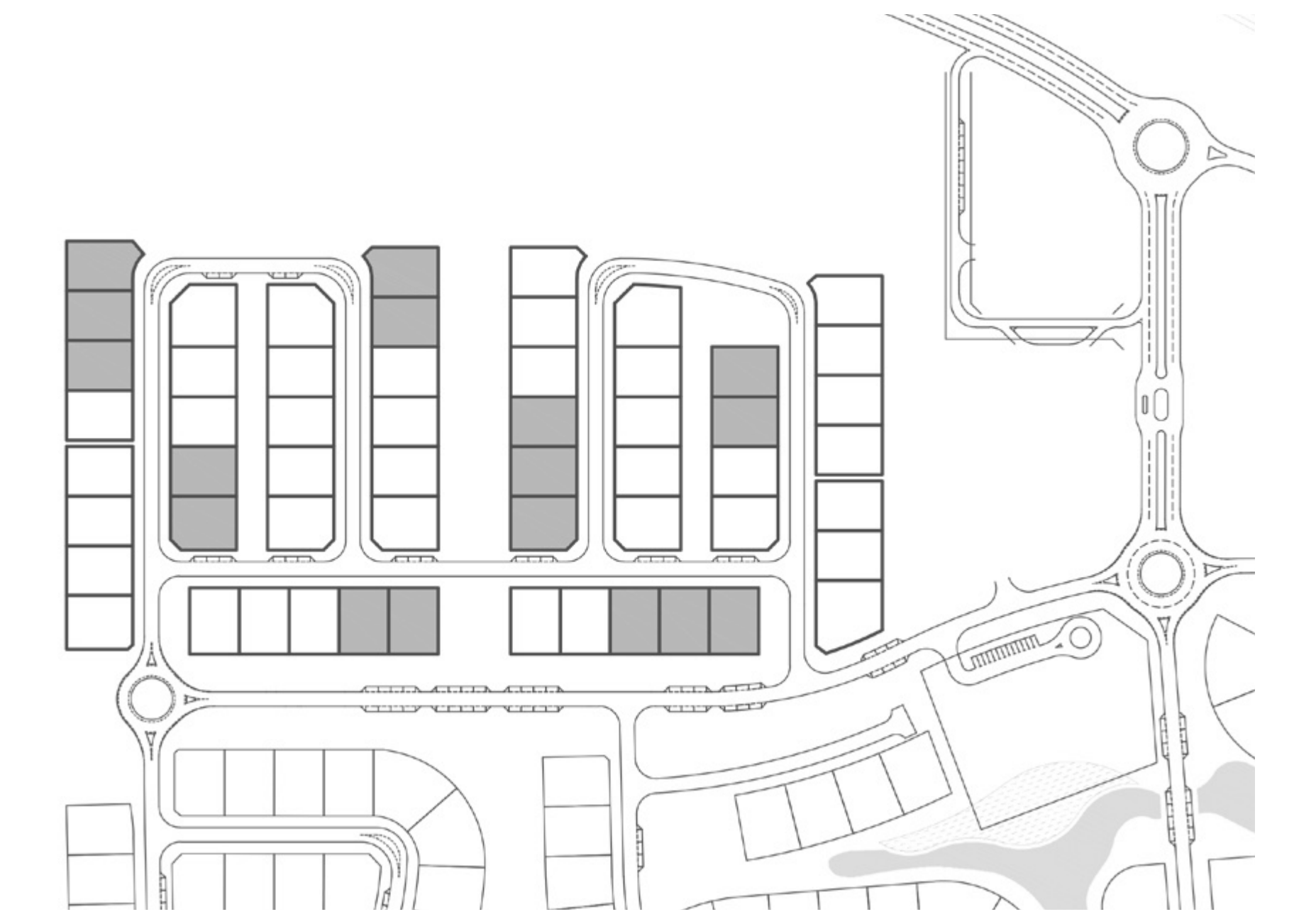
PALMIERA 2

THE OASIS

4 BEDROOM
CONTEMPORARY

GROUND FLOOR	1,819.85	SQ.FT.	169.07	SQ.M.
FIRST FLOOR	1,777.77	SQ.FT.	165.16	SQ.M.
SECOND FLOOR	520.11	SQ.FT.	48.32	SQ.M.
CAR PORT AREA	639.05	SQ.FT.	59.37	SQ.M.
ENTRY / TERRACE	127.88	SQ.FT.	11.88	SQ.M.
BALCONY	816.98	SQ.FT.	75.90	SQ.M.
DRIVER ROOM	141.22	SQ.FT.	13.12	SQ.M.
TOTAL AREA	5,842.86	SQ.FT.	542.82	SQ.M.

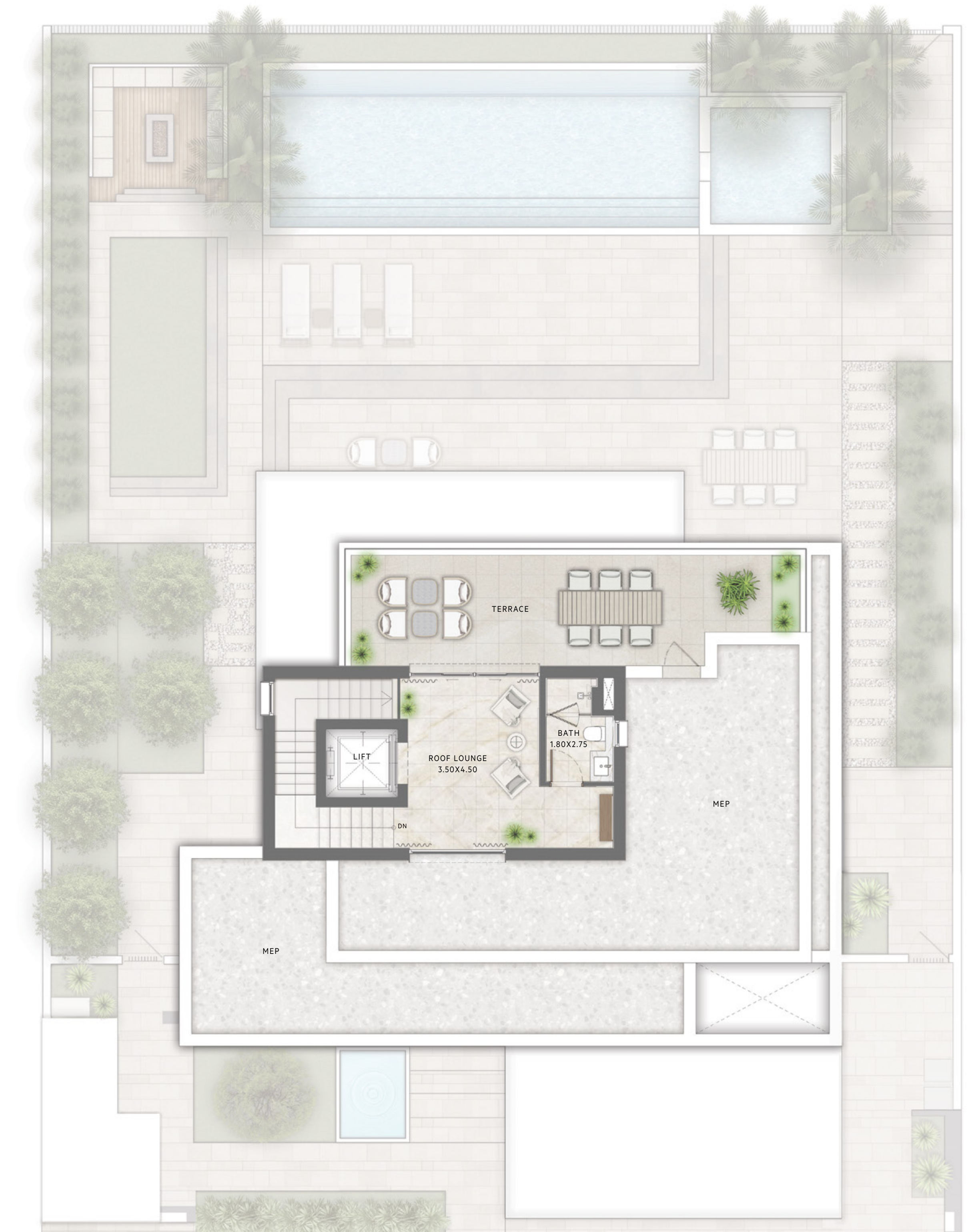
KEY PLAN



GROUND FLOOR



FIRST FLOOR



SECOND FLOOR

FLOOR PLAN 1. All dimensions are in imperial and metric, and measured from finish to finish excluding construction tolerances. 2. All materials, dimensions, and drawings are approximate only. 3. Information is subject to change without notice, at developer's absolute discretion. 4. Actual area may vary from the stated area. 5. Drawings not to scale. 6. All images used are for illustrative purposes only and do not represent the actual size, features, specifications, fittings, and furnishings. 7. The developer reserves the right to make revisions / alterations, at it's absolute discretion, without any liability whatsoever.

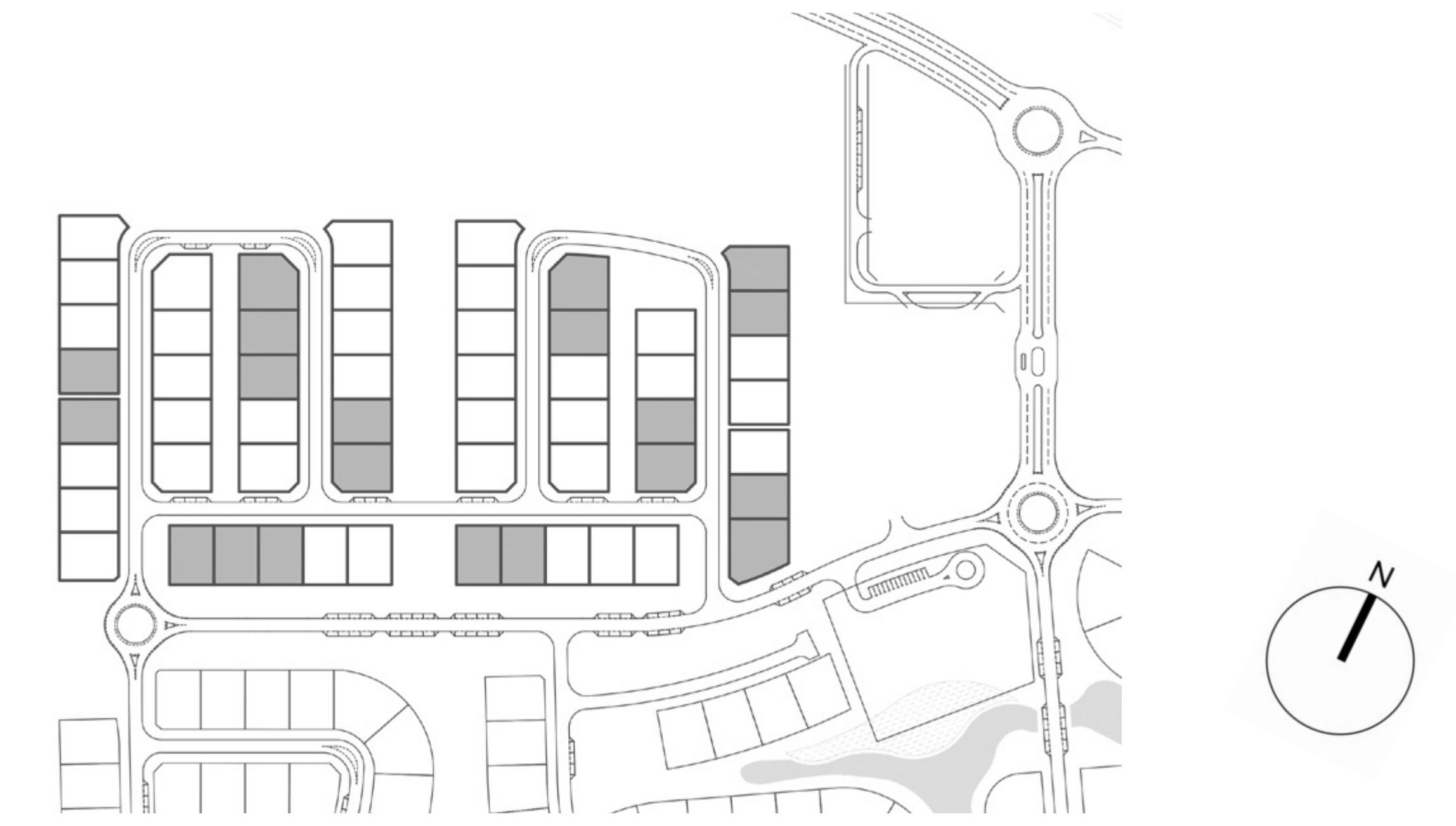
PALMIERA 2

THE OASIS

4 BEDROOM
CHAMFER

GROUND FLOOR	1,901.44	SQ.FT.	176.65	SQ.M.
FIRST FLOOR	1,721.26	SQ.FT.	159.91	SQ.M.
SECOND FLOOR	714.62	SQ.FT.	66.39	SQ.M.
CAR PORT AREA	643.68	SQ.FT.	59.80	SQ.M.
ENTRY / TERRACE	58.02	SQ.FT.	5.39	SQ.M.
BALCONY	691.47	SQ.FT.	64.24	SQ.M.
DRIVER ROOM	141.44	SQ.FT.	13.14	SQ.M.
TOTAL AREA	5,871.92	SQ.FT.	545.52	SQ.M.

KEY PLAN



GROUND FLOOR



FIRST FLOOR



SECOND FLOOR

FLOOR PLAN 1. All dimensions are in imperial and metric, and measured from finish to finish excluding construction tolerances. 2. All materials, dimensions, and drawings are approximate only. 3. Information is subject to change without notice, at developer's absolute discretion. 4. Actual area may vary from the stated area. 5. Drawings not to scale. 6. All images used are for illustrative purposes only and do not represent the actual size, features, specifications, fittings, and furnishings. 7. The developer reserves the right to make revisions / alterations, at it's absolute discretion, without any liability whatsoever.